



Microresistivity Log

DIGITAL LOG (785) 625-3858

API No.	15-109-20941-00-00		
Company	Russell Oil Inc.		
Well	McDaniel "D" #1-24		
Field	Wildcat		
County	Logan	State	Kansas
Location	S2 NW/NW SE 2240' FSL & 2310' FEL		
Sec: 24	Twp: 15S	Rge: 34W	Other Services CNL /CDL DIL
Permanent Datum	Ground Level	Elevation 2977	Elevation
Log Measured From	Kelly Bushing	11 Ft. Above Perm. Datum	K.B. 2988
Drilling Measured From	Frotkelly Bushing		D.F. 2977
			G.L. 2977

Date	10/31/2010
Run Number	Two
Depth Driller	4780
Depth Logger	4792
Bottom Logged Interval	4791
Top Log Interval	3400
Casing Driller	8.625 @ 225
Casing Logger	225
Bit Size	7.875
Type Fluid in Hole	Chemical
Salinity, ppm CL	5700
Density / Viscosity	9.4 59
pH / Fluid Loss	9.5 9.2
Source of Sample	Flowline
Rm @ Meas. Temp	.32 @ 64
Rmf @ Meas. Temp	.24 @ 64
Rmc @ Meas. Temp	.43 @ .64
Source of Rmf / Rmc	Charts
Rm @ BHT	.16 @ 126
Operating Rig Time	4 Hours
Max Rec. Temp. F	126
Equipment Number	17
Location	Hays
Recorded By	R. Barnhart
Witnessed By	Steven D. Angle

<<< Fold Here >>>

All interpretations are opinions based on inferences from electrical or other measurements and we cannot and do not guarantee the accuracy or correctness of any interpretation, and we shall not, except in the case of gross or willful negligence on our part, be liable or responsible for any loss, costs, damages, or expenses incurred or sustained by anyone resulting from any interpretation made by any of our officers, agents or employees. These interpretations are also subject to our general terms and conditions set out in our current Price Schedule.

Comments

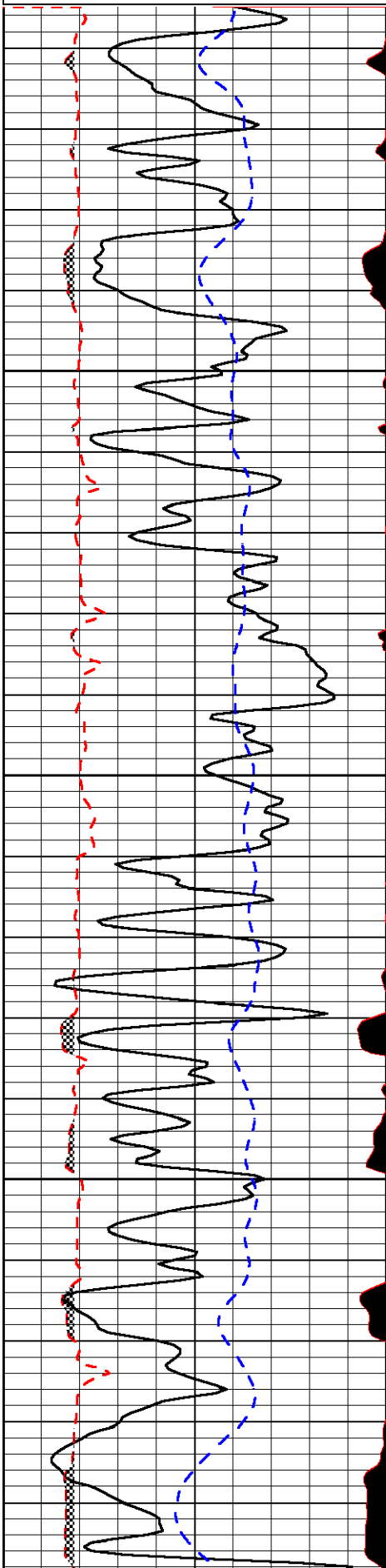
Thank you for using Log-Tech, Inc.
(785) 625-3858

Hwy 83 & 95:
NW 2, W 7, N 6, W into

Database File: russell_mcdaniel1-24hd.db
 Dataset Pathname: dil/@00000e60
 Presentation Format: micro
 Dataset Creation: Sun Oct 31 15:43:15 2010
 Charted by: Depth in Feet scaled 1:240

0	Gamma Ray	150
6	MCAL (GAPI)	16
2.875	Mud Cake (GAPI)	7.875
-200	SP	0

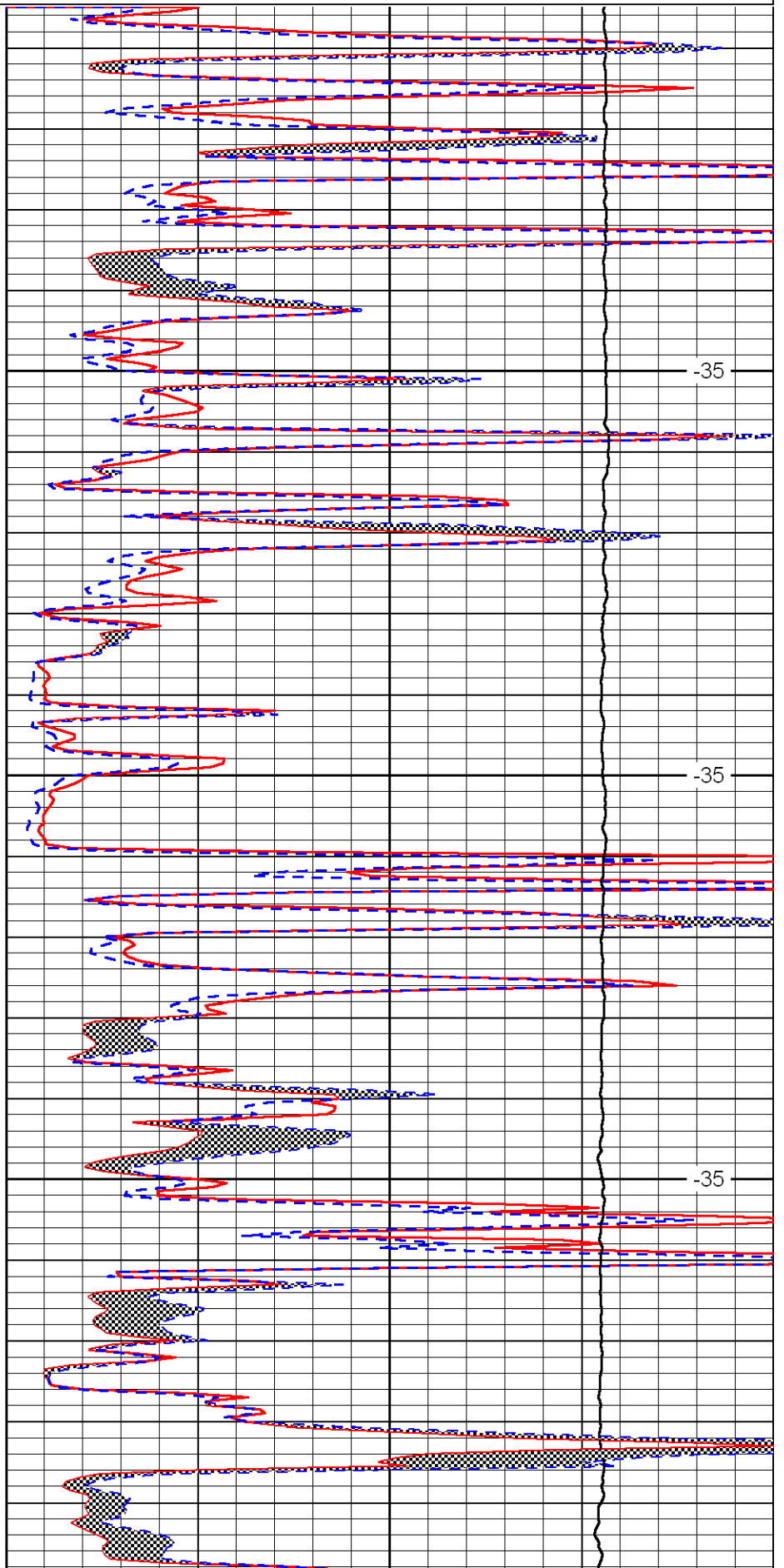
0	Micro Inverse 1 X 1	40
0	Micro Normal 2"	40
10000	Line Weight	0
		LSPD



3450

3500

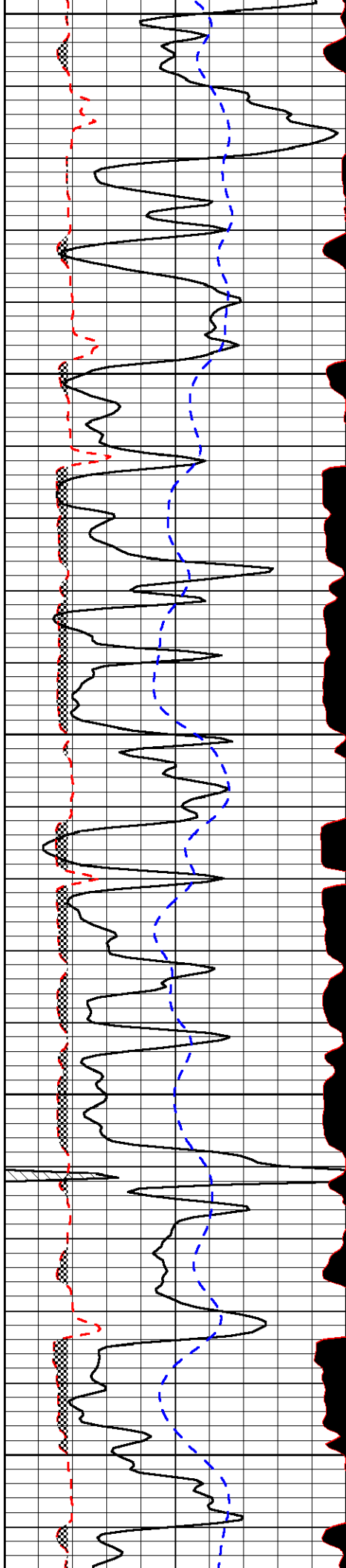
3550



-35

-35

-35



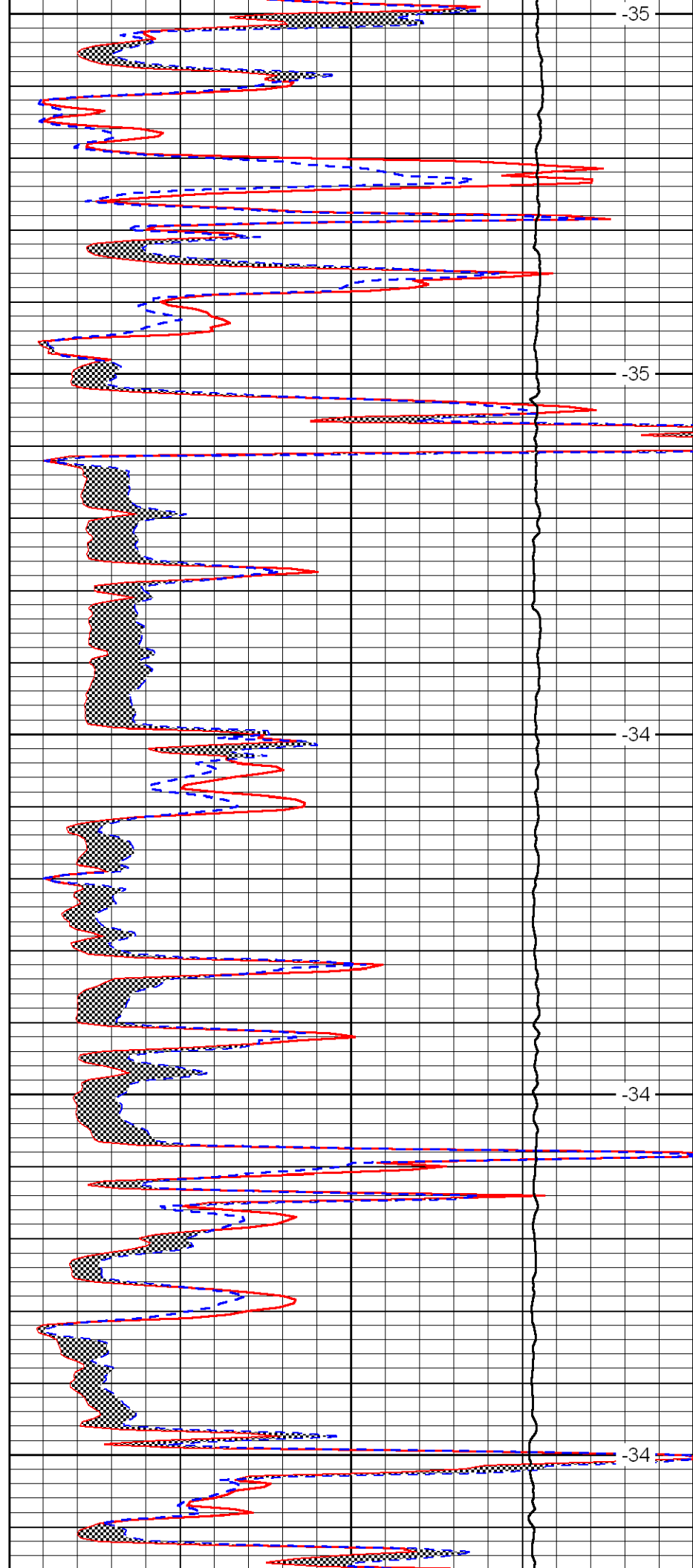
3600

3650

3700

3750

3800



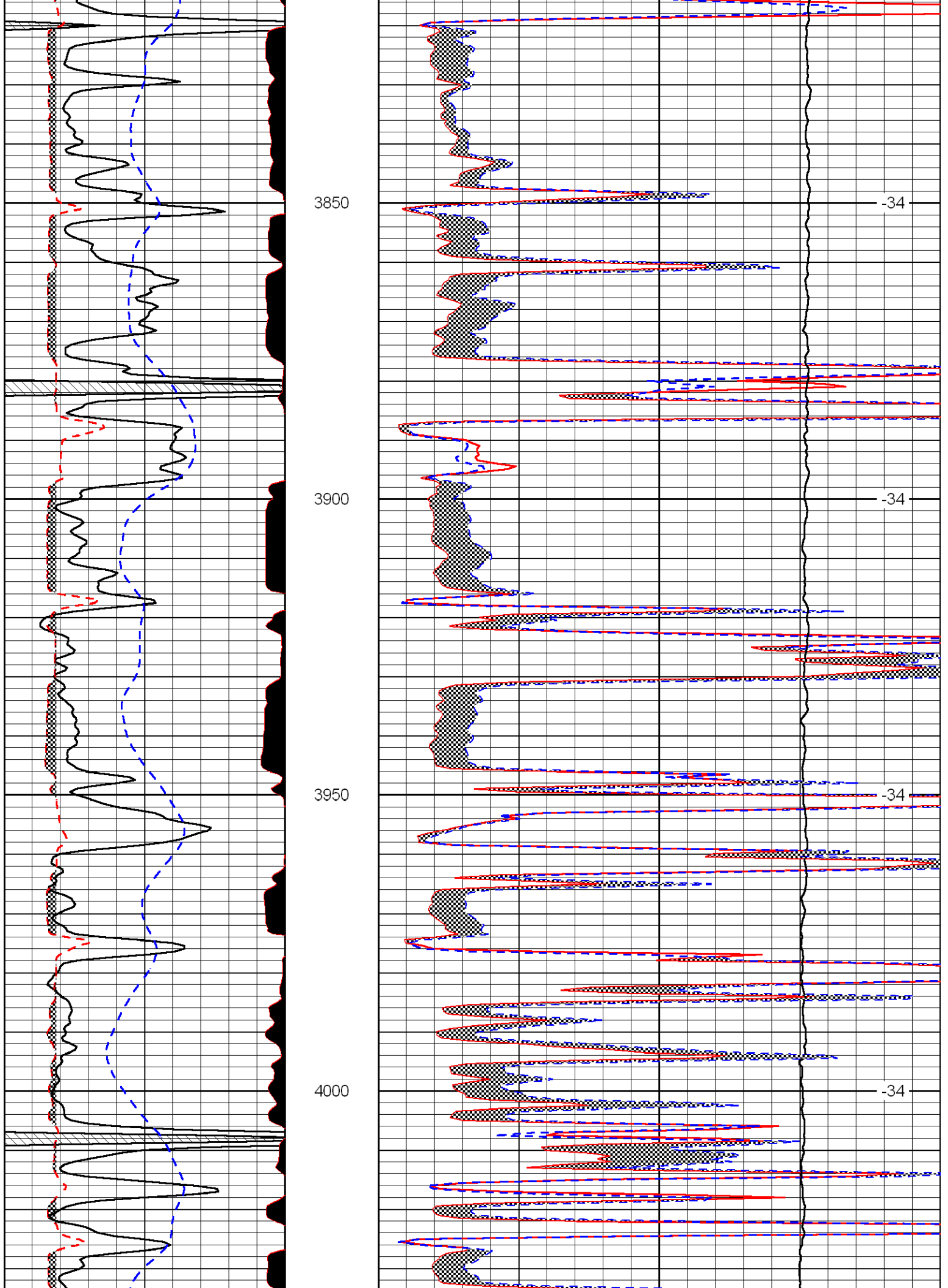
-35

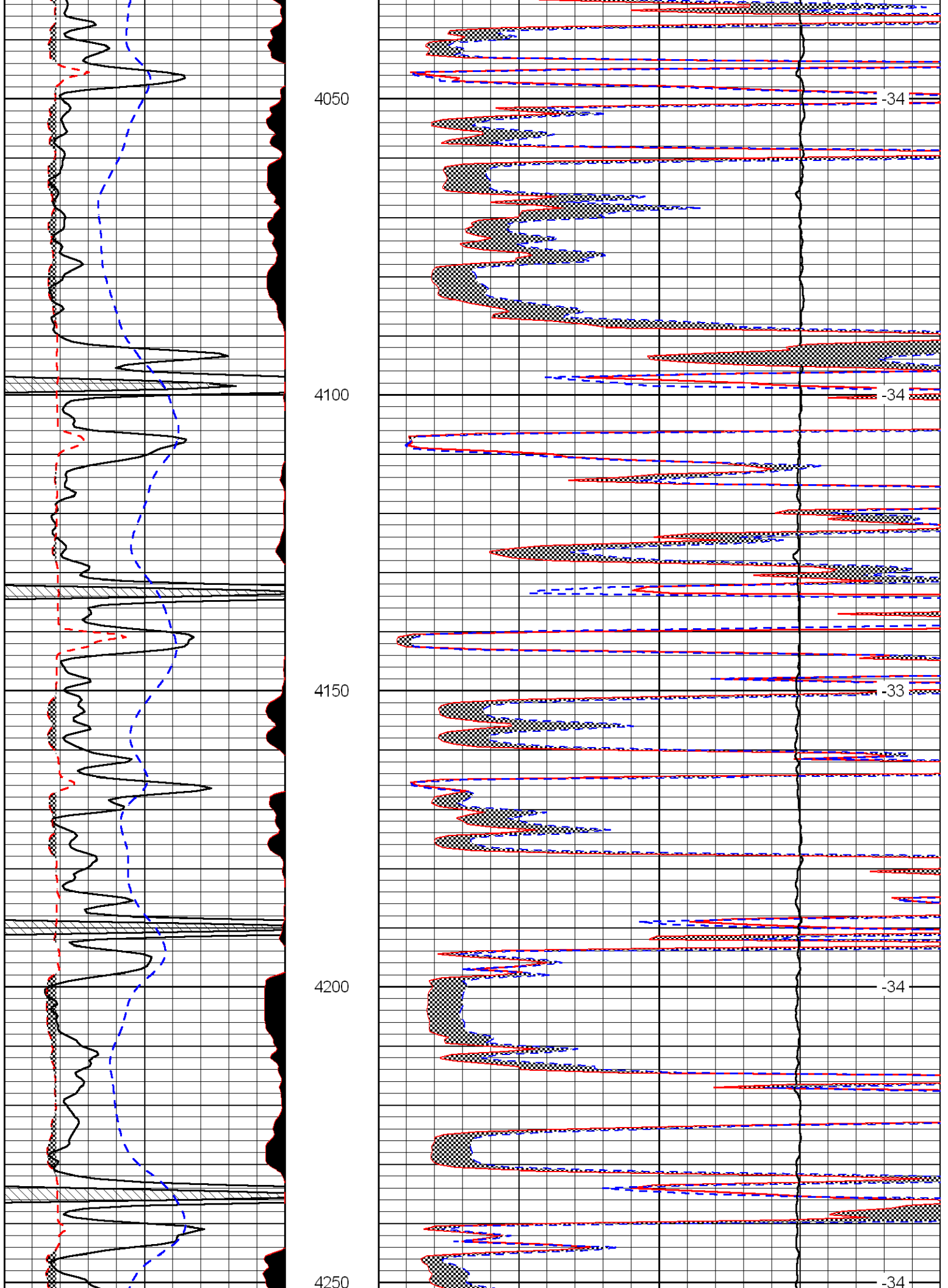
-35

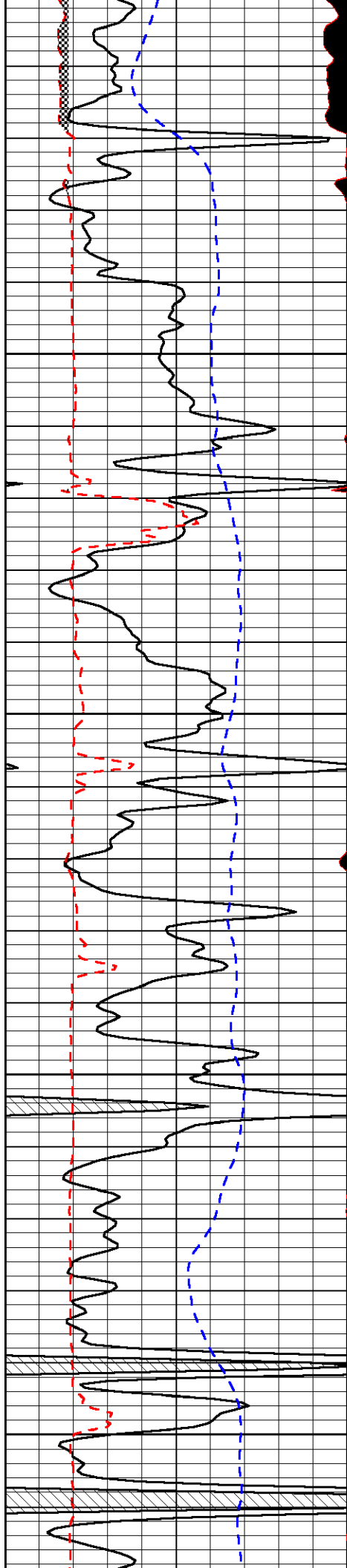
-34

-34

-34





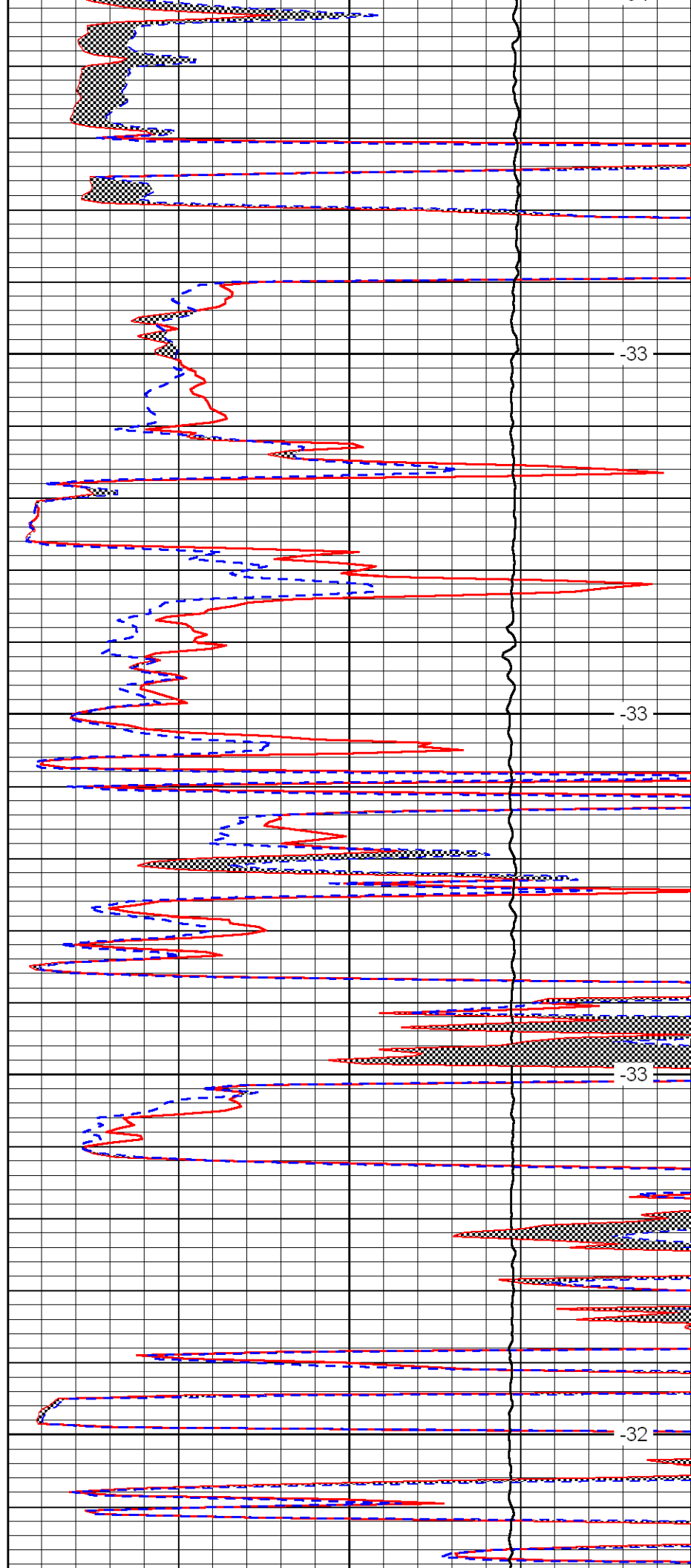


4300

4350

4400

4450

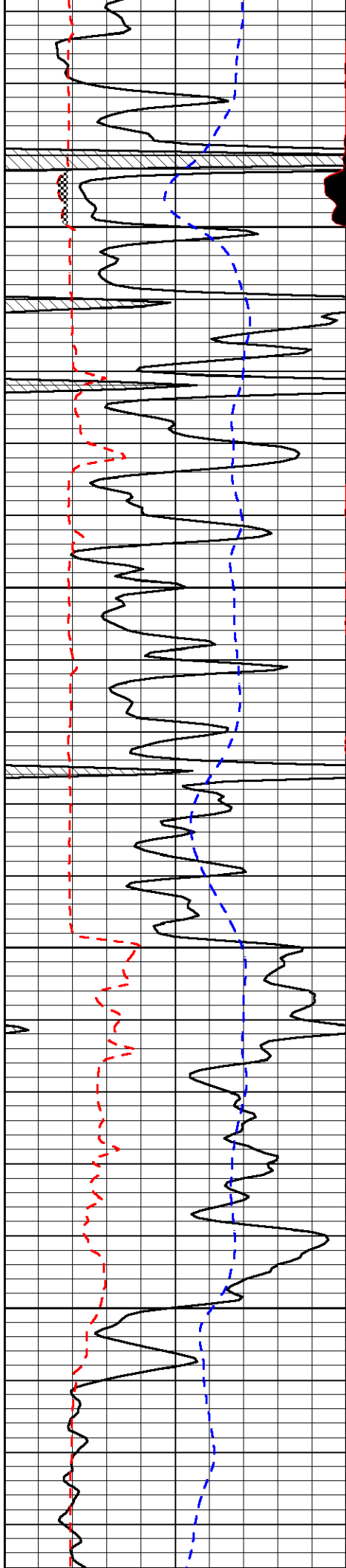


-33

-33

-33

-32

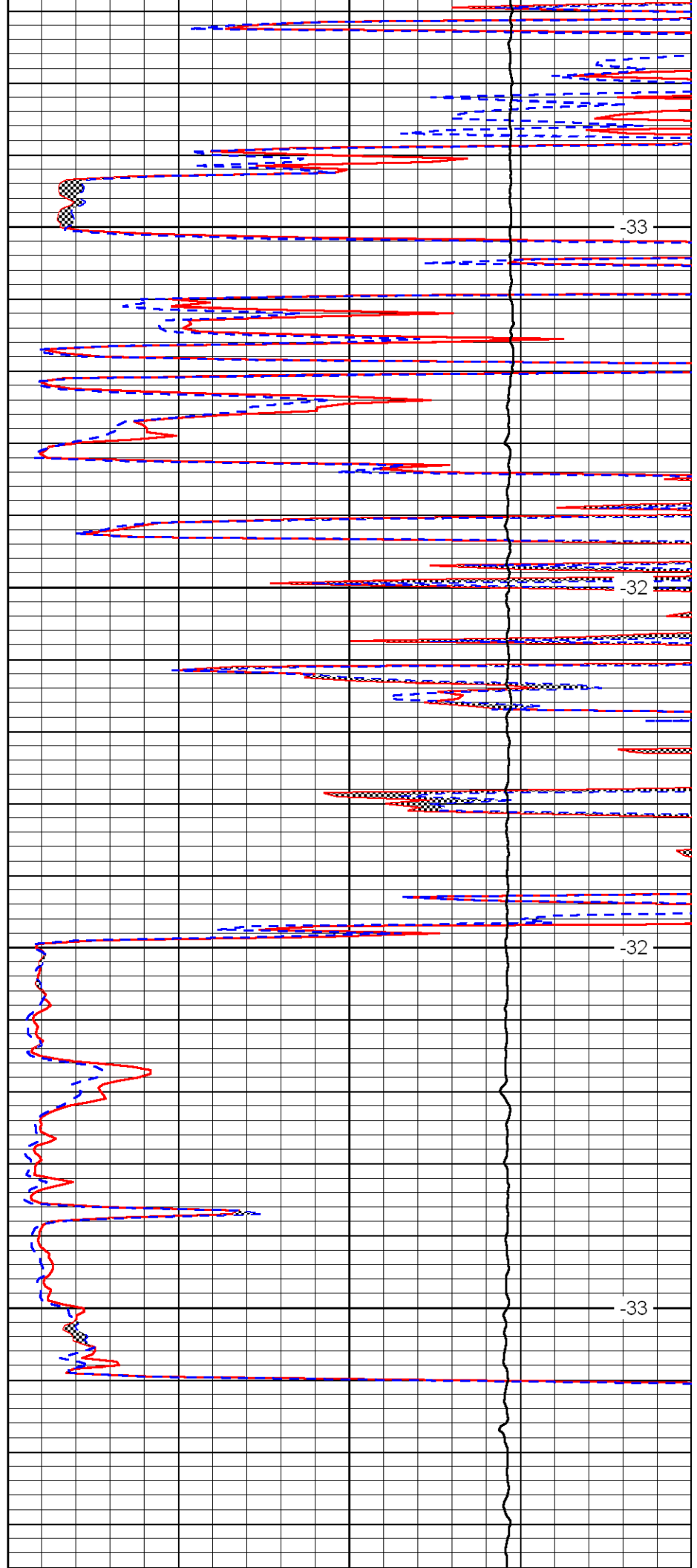


4500

4550

4600

4650

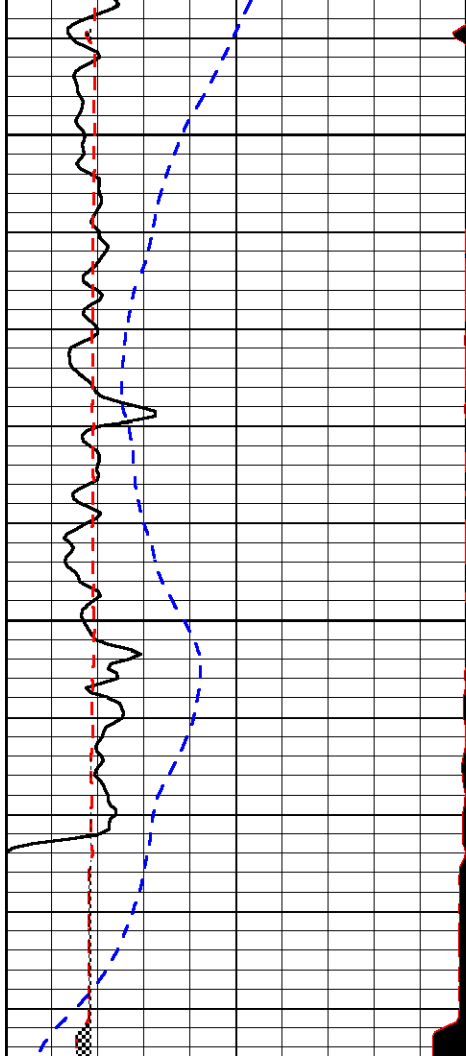


-33

-32

-32

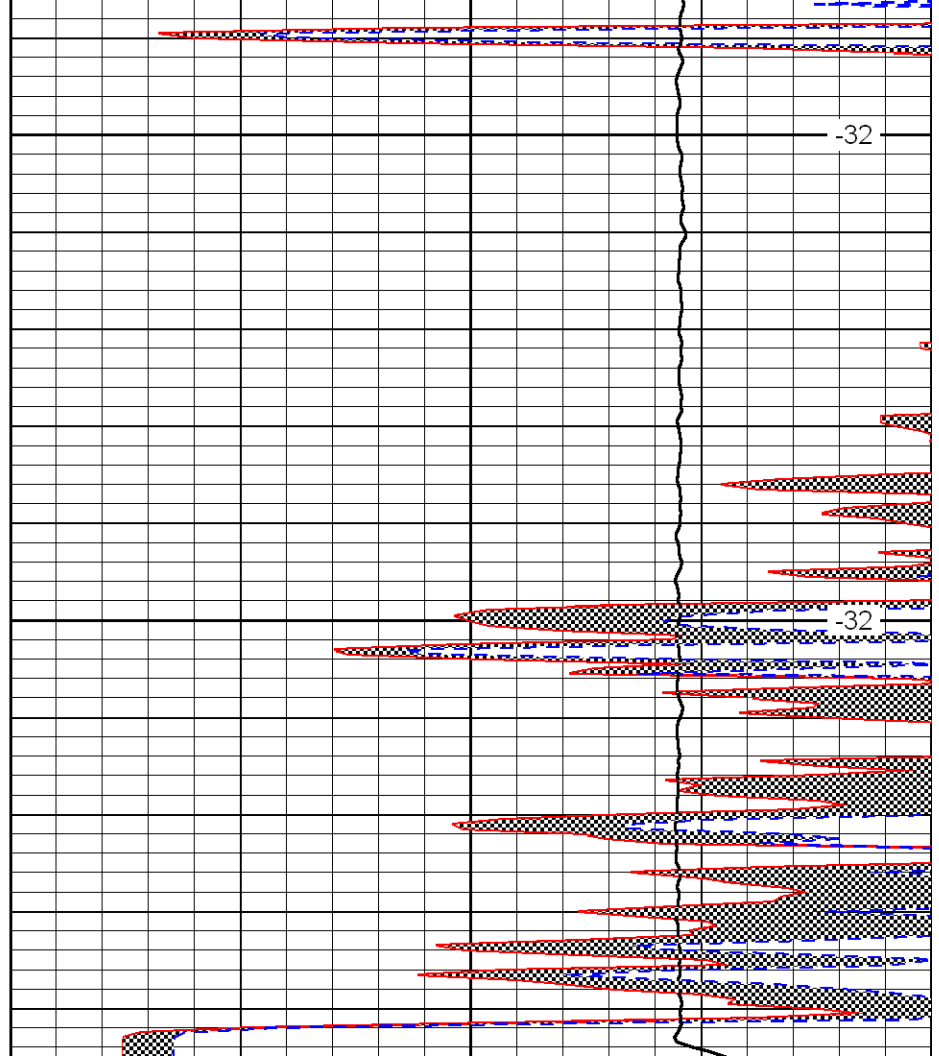
-33



0	Gamma Ray	150
6	MCAL (GAPI)	16
2.875	Mud Cake (GAPI)	7.875
-200	SP	0

4700

4750



0	Micro Inverse 1 X 1	40
0	Micro Normal 2''	40
10000	Line Weight	0

-32

-32

LSPD