



**SUPERIOR  
Hays,  
Kansas**

**COMPENSATED  
DENSITY / NEUTRON  
PE LOG**

Company VINCENT OIL CORPORATION  
Well STEELE #1-6  
Field  
County FORD State KANSAS

Company VINCENT OIL CORP.  
Well STEELE #1-6  
Field  
County FORD  
State KANSAS

Location: API #: 15-057-20695-0000  
1810' FNL & 2370' FWL  
SEC 6 TWP 28S RGE 23W  
Permanent Datum GROUND LEVEL Elevation 2499  
Log Measured From KELLY BUSHING 12' A.G.L.  
Drilling Measured From KELLY BUSHING  
Other Services  
DIL  
MEL/SON  
Elevation

Date	9-17-10
Run Number	ONE
Depth Driller	5400
Depth Logger	5404
Bottom Logged Interval	5380
Top Log Interval	4100
Casing Driller	653
Casing Logger	650
Bit Size	7.875
Type Fluid in Hole	CHEMICAL MUD
Density / Viscosity	9.0 / 53
pH / Fluid Loss	10.0 / 10.0
Source of Sample	FLOWLINE
Rm @ Meas. Temp	0.45 @ 87F
Rmf @ Meas. Temp	0.34 @ 87F
Rmc @ Meas. Temp	0.54 @ 87F
Source of Rmf / Rmc	MEASURED
Rm @ BHT	0.30 @ 129F
Time Circulation Stopped	2 HOURS
Time Logger on Bottom	
Maximum Recorded Temperature	129F
Equipment Number	860
Location	HAYS, KS.
Recorded By	JEFF GRONEWEG
Witnessed By	KENLEBLANC

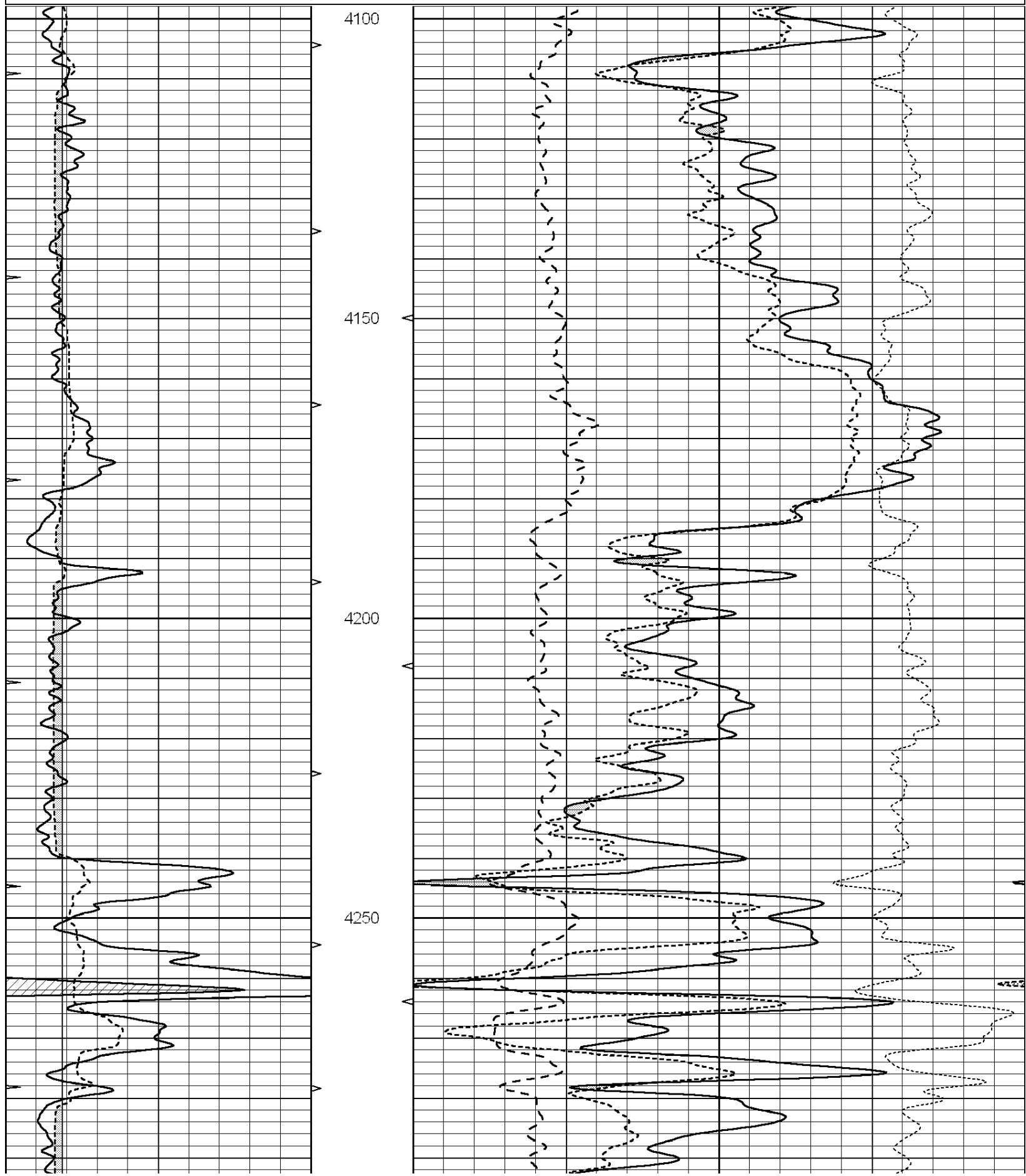
<<< Fold Here >>>

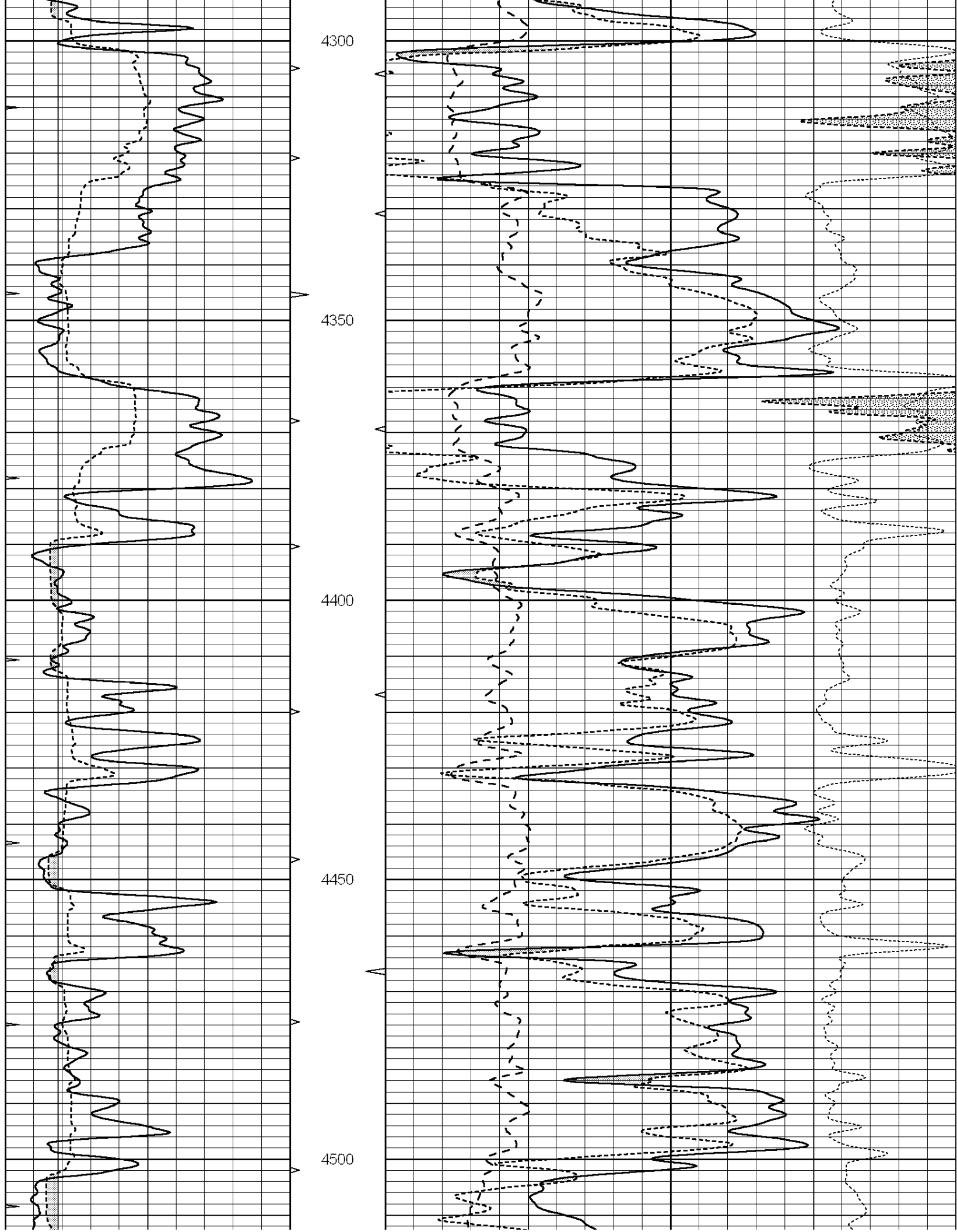
All interpretations are opinions based on inferences from electrical or other measurements and we cannot and do not guarantee the accuracy or correctness of any interpretation, and we shall not, except in the case of gross or willful negligence on our part, be liable or responsible for any loss, costs, damages, or expenses incurred or sustained by anyone resulting from any interpretation made by any of our officers, agents or employees. These interpretations are also subject to our general terms and conditions set out in our current Price Schedule.

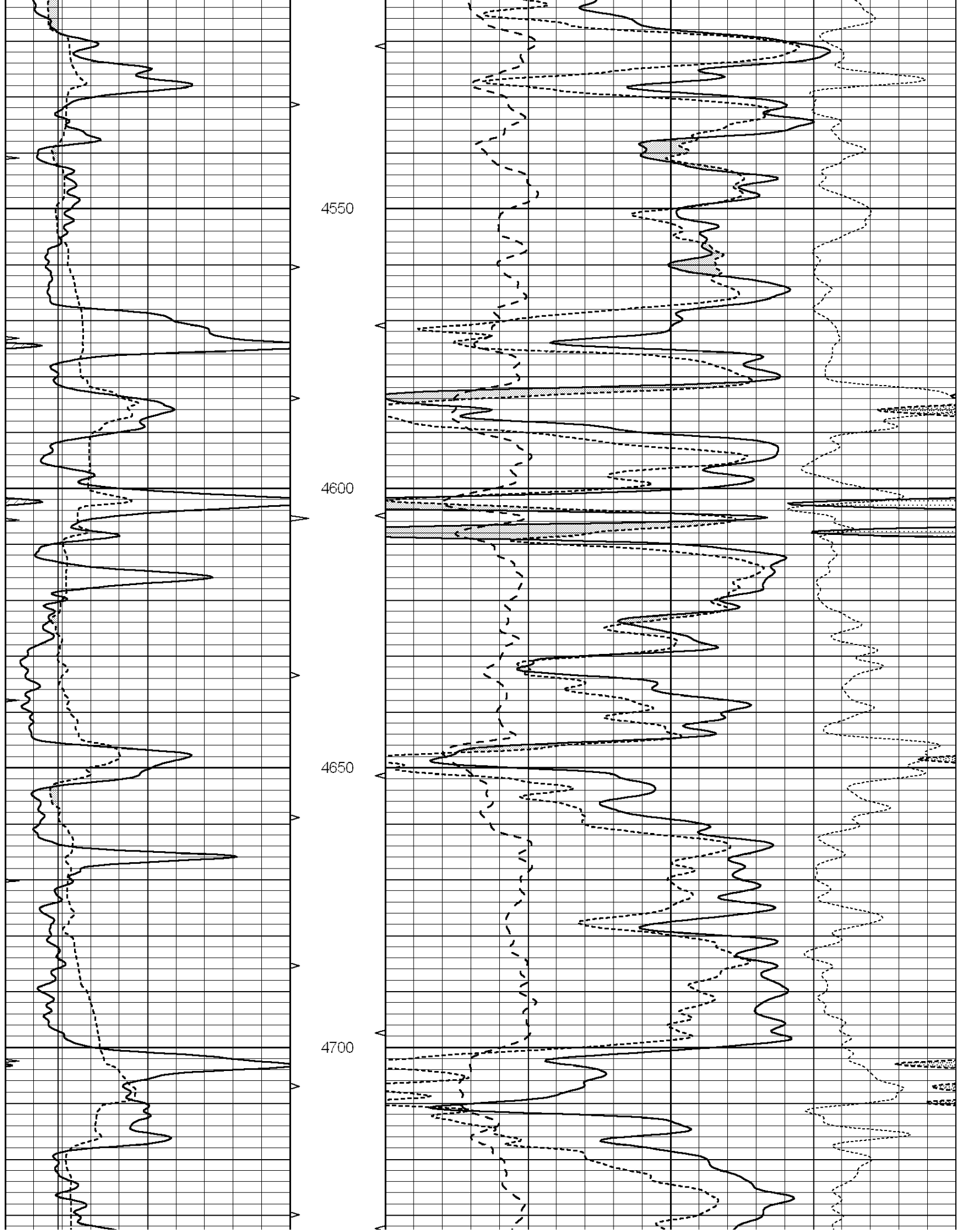
Comments

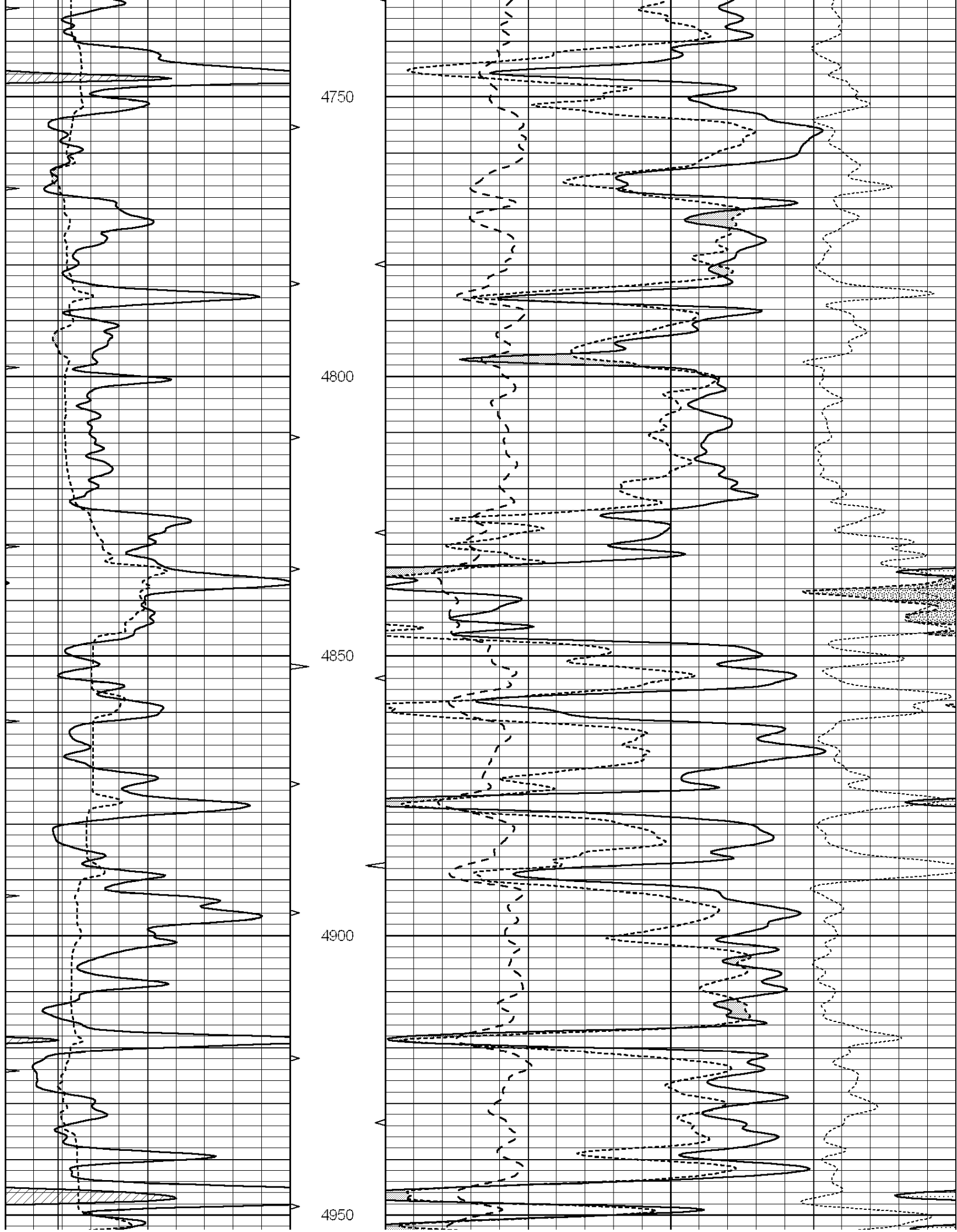
**SUPERIOR WELL SERVICES**  
 785-628-6395  
**THANK YOU FOR YOUR BUSINESS**  
 DIRECTIONS: WRIGHT, KS - SOUTH TO SADDLE RD - 1 1/2 MILE EAST  
 SOUTH INTO

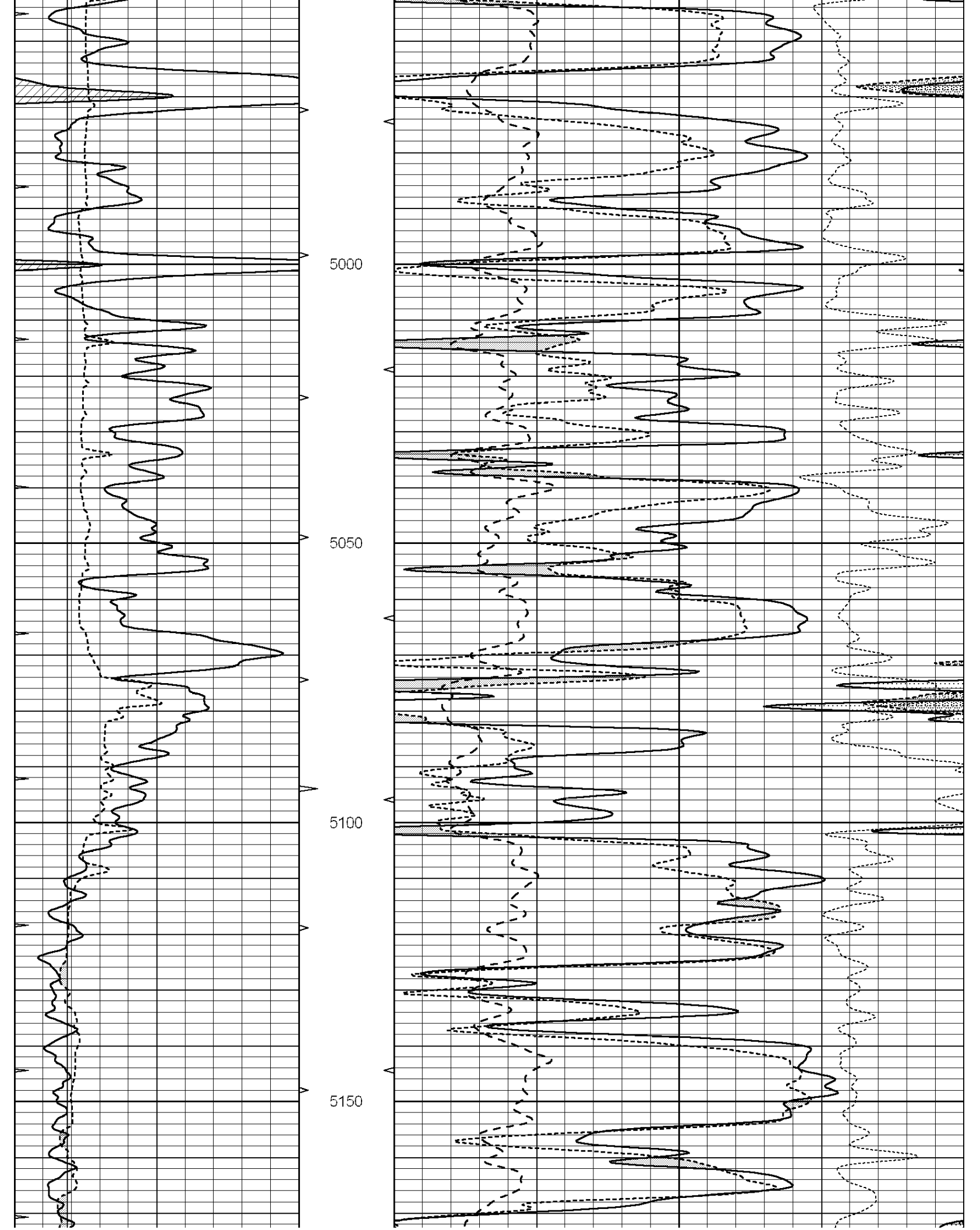
0	GAMMA RAY (GAPI)	150	ABHV	30	COMPENSATED DENSITY (pu)		-10
6	CALIPER (in)	16	10 (ft3)	0	COMPENSATED NEUTRON (pu)		-10
0	MINMK	20	TBHV	0	PE	10	-0.25 CORRECTION (g/cc) 0.25
			0 (ft3)	10			

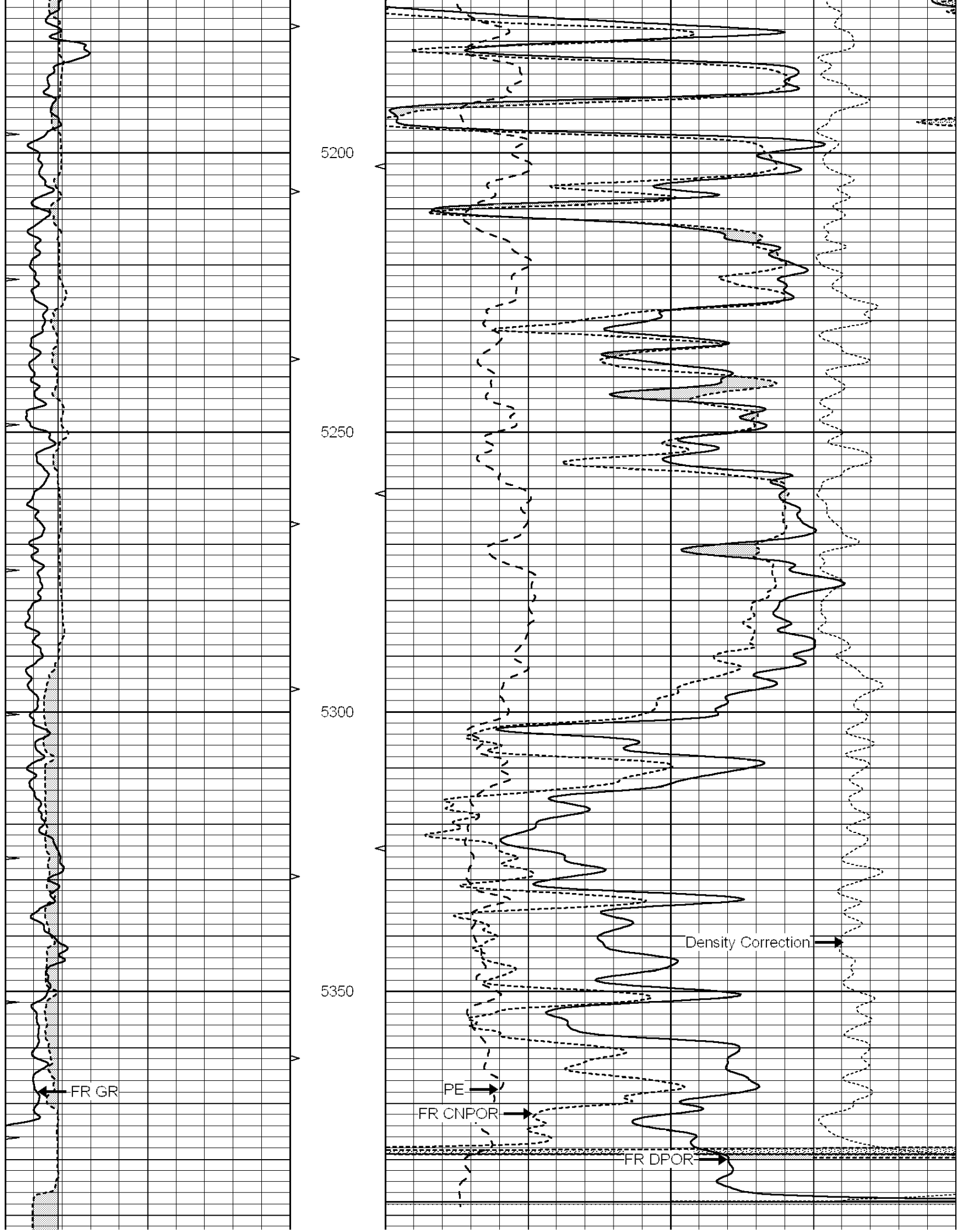












LIMESTONE MATRIX 2.71

5400  
LTD 5404

0	GAMMA RAY (GAPI)	150	ABHV	30	COMPENSATED DENSITY (pu)			-10
6	CALIPER (in)	16	10 (ft3)	0 30	COMPENSATED NEUTRON (pu)			-10
0	MINMK	20	TBHV	0	PE	10	-0.25	CORRECTION (g/cc) 0.25
			0 (ft3)	10				

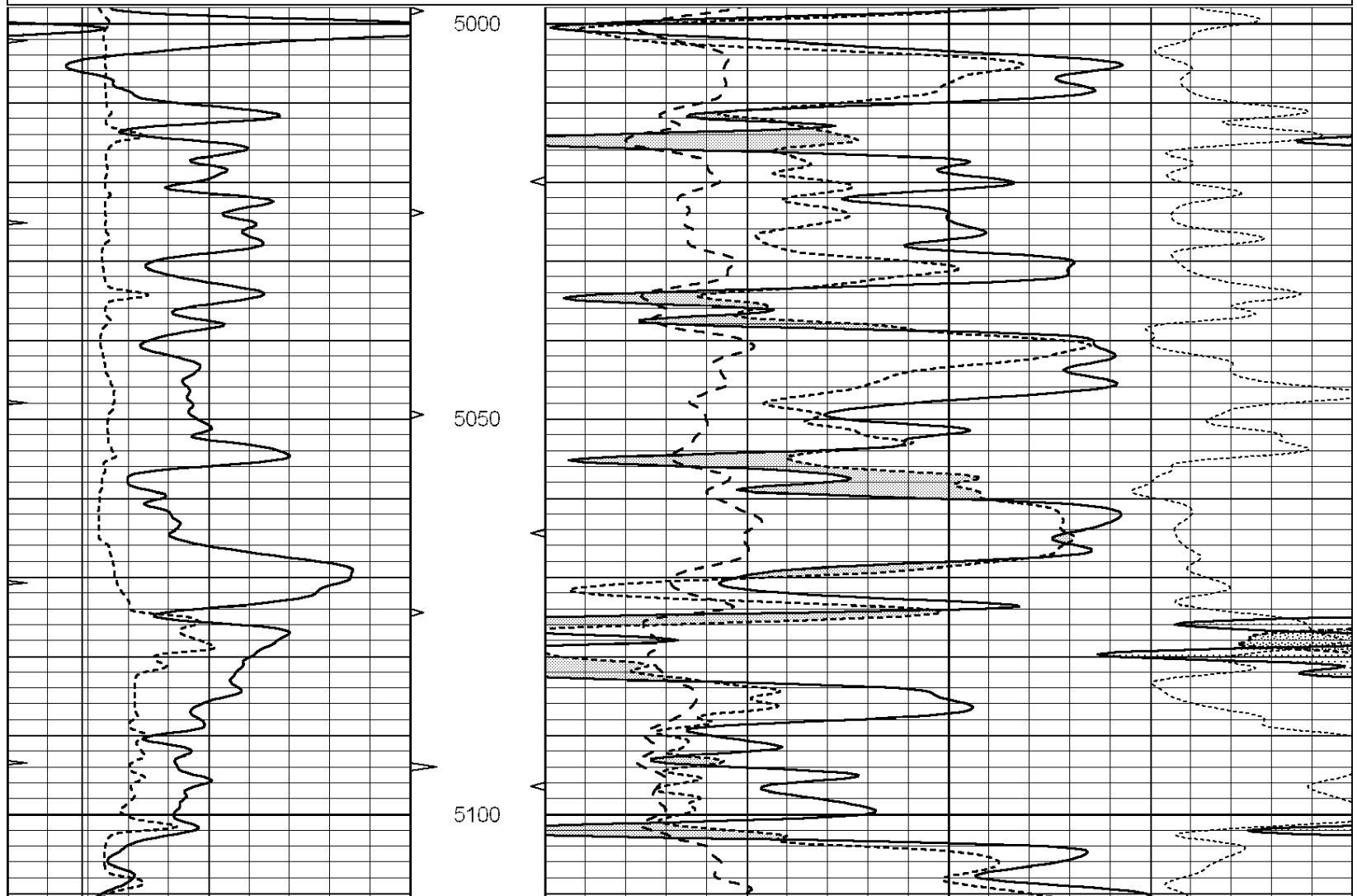


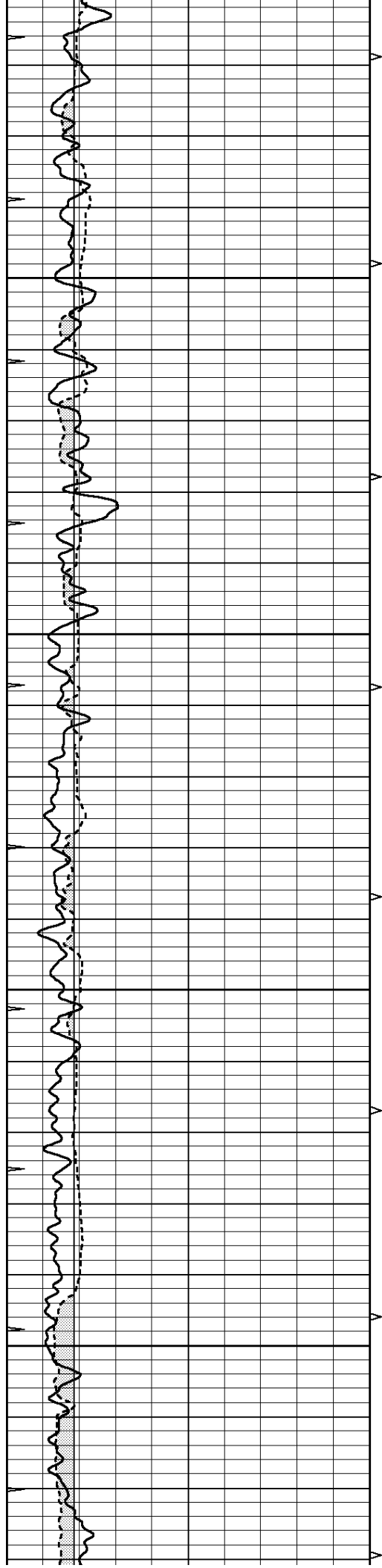
SUPERIOR  
Hays,  
Kansas

# REPEAT SECTION

Database File: 005687pe.db  
 Dataset Pathname: pass7  
 Presentation Format: ldt\_neu  
 Dataset Creation: Fri Sep 17 11:24:40 2010  
 Charted by: Depth in Feet scaled 1:240

0	GAMMA RAY (GAPI)	150	ABHV	30	COMPENSATED DENSITY (pu)			-10
6	CALIPER (in)	16	10 (ft3)	0 30	COMPENSATED NEUTRON (pu)			-10
0	MINMK	20	TBHV	0	PE	10	-0.25	CORRECTION (g/cc) 0.25
			0 (ft3)	10				



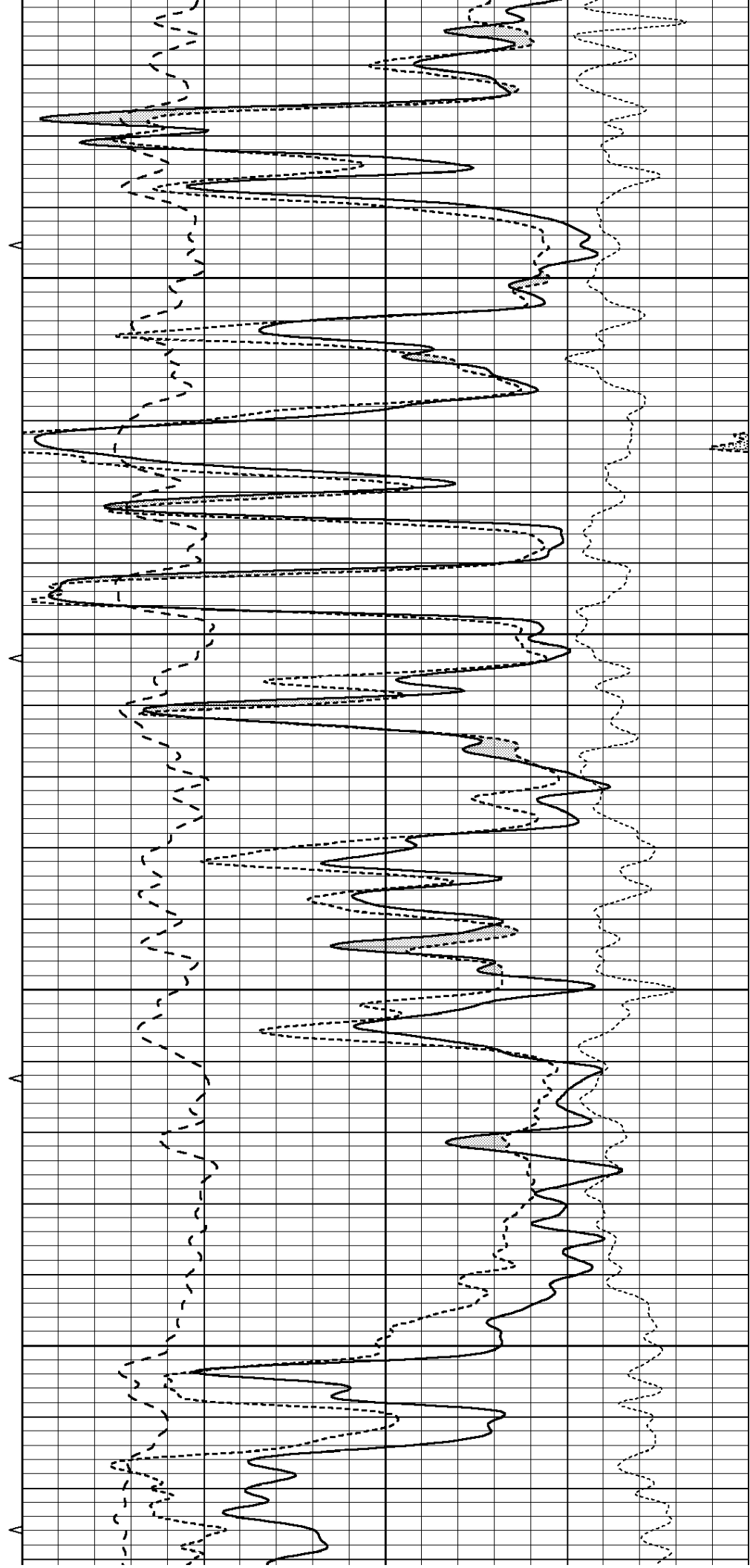


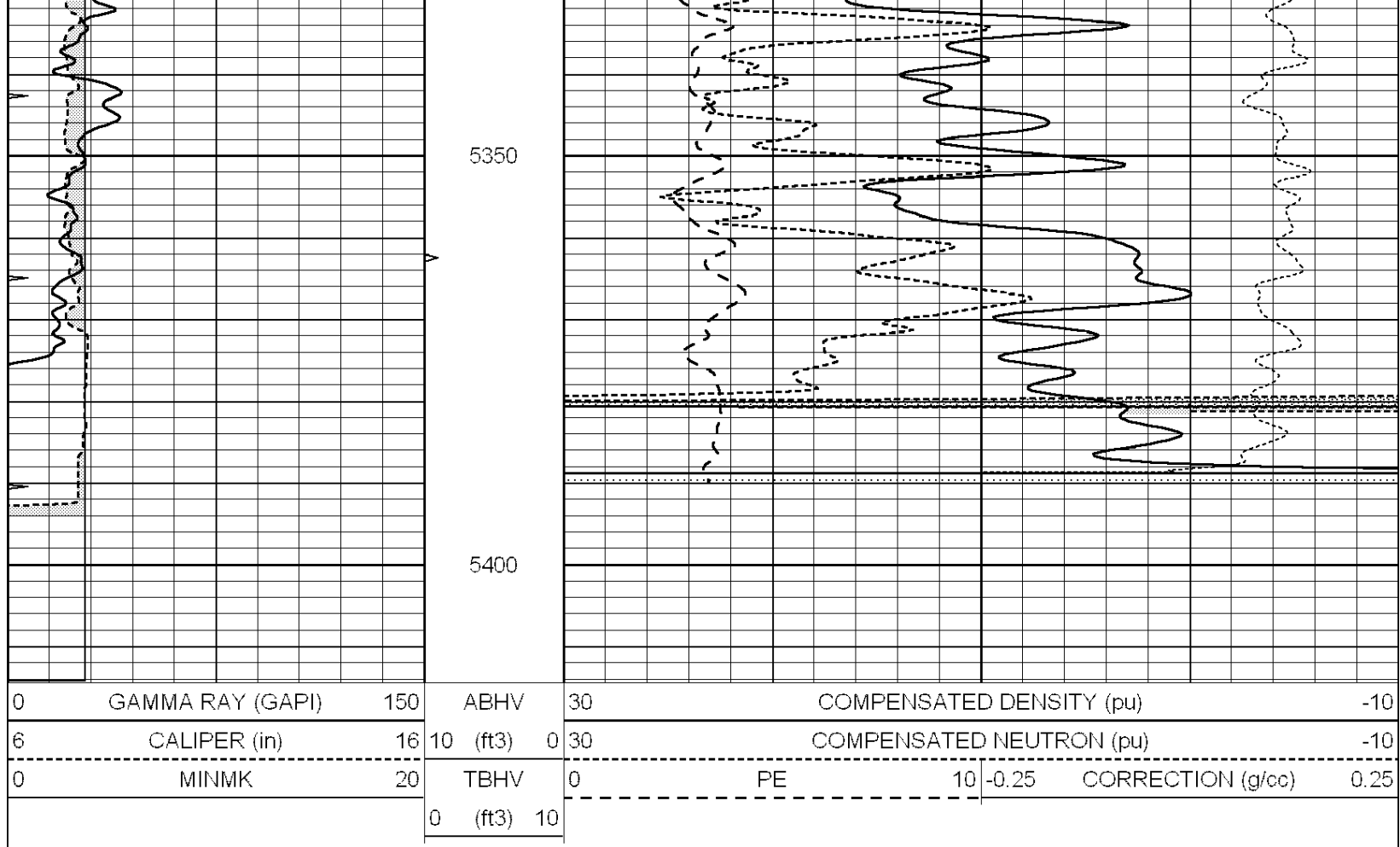
5150

5200

5250

5300





### Calibration Report

Database File: 005687pe.db  
 Dataset Pathname: pass3.3.1  
 Dataset Creation: Fri Sep 17 11:35:53 2010

### Dual Induction Calibration Report

Serial-Model: DIL5-GEAR  
 Performed: Thu Sep 16 07:14:17 2010

Loop:	Readings			References			Results	
	Air	Loop		Air	Loop		m	b
Deep	0.004	0.654	V	0.000	400.000	mmho/m	540.000	-8.000
Medium	-0.005	0.737	V	0.000	462.500	mmho/m	520.000	-10.000
Internal:	Zero	Cal		Zero	Cal		m	b
Deep	0.006	0.655	V	0.000	400.000	mmho/m	615.668	-3.483
Medium	0.010	0.747	V	0.000	462.500	mmho/m	627.607	-6.064

### Litho Density Calibration Report

Serial: 002 Model: PRB  
 Performed Tue Jul 03 11:12:28 2007

#### Litho Density Calibration

	Background	Magnesium	Aluminum	Sandstone	
Window 1	1059.5	9172.0	2859.6	10210.6	cps
Window 2	976.0	7793.2	2486.1	8515.6	cps
Window 3	689.8	2930.5	1159.0	3096.2	cps
Window 4	231.9	237.2	231.1	234.0	cps
Long Grass	0.0	0.0	0.0	0.0	cps

Long Space	0.0	6817.1	1510.1	7539.6	cps
Short Space	1.6	1758.1	1188.6	1898.8	cps
Rho		1.7100	2.5960	1.3800	g/cc
Pe			2.5700	1.5500	

Rib Angle	: 45.4	Rib Slope	: 1.015	Density/Spine Ratio	: 0.569
Spine Angle	: 75.4	Spine Slope	: 3.850	Spine Intercept	: -19.9

Caliper		Readings	Reference	
Low Ref		2.8	8.9	
High Ref		4.8	14.0	
		Gain: 2.5		Offset: 2.1

Compensated Neutron Calibration Report

Serial Number:	NEU_11
Tool Model:	G

CALIBRATION

Detector	Readings	Target	Normalization
Short Space	1.00 cps	1.00 cps	1.0000
Long Space	1.00 cps	1.00 cps	1.0000

Gamma Ray Calibration Report

Serial Number:	GR5
Tool Model:	OPEN
Performed:	Thu Sep 16 07:13:10 2010
Calibrator Value:	1.0 GAPI
Background Reading:	0.0 cps
Calibrator Reading:	1.0 cps
Sensitivity:	0.6500 GAPI/cps