



**SUPERIOR
Hays,
Kansas**

**MICRO
LOG**

Company VINCENT OIL CORPORATION
Well STEELE #1-6
Field
County FORD State KANSAS

Company VINCENT OIL CORP.
Well STEELE #1-6
Field
County FORD
State KANSAS

Location: API #: 15-057-20695-0000
1810' FNL & 2370' FWL
SEC 6 TWP 28S RGE 23W
Permanent Datum GROUND LEVEL Elevation 2499
Log Measured From KELLY BUSHING 12' A.G.L.
Drilling Measured From KELLY BUSHING
Other Services
CDL/CNL/PE
DIL/SON
Elevation
K.B. 2511
D.F. 2509
G.L. 2499

Date	9-17-10
Run Number	TW0
Depth Driller	5400
Depth Logger	5404
Bottom Logged Interval	5386
Top Log Interval	4100
Casing Driller	653
Casing Logger	650
Bit Size	7.875
Type Fluid in Hole	CHEMICAL MUD
Density / Viscosity	9.0 / 53
pH / Fluid Loss	10.0 / 10.0
Source of Sample	FLOWLINE
Rim @ Meas. Temp	0.45 @ 87F
Rmf @ Meas. Temp	0.34 @ 87F
Rmc @ Meas. Temp	0.54 @ 87F
Source of Rmf / Rmc	MEASURED
Rim @ BHT	0.30 @ 129F
Time Circulation Stopped	2 HOURS
Time Logger on Bottom	
Maximum Recorded Temperature	129F
Equipment Number	860
Location	HAYS, KS.
Recorded By	JEFF GRONEWEG
Witnessed By	KENLEBLANC

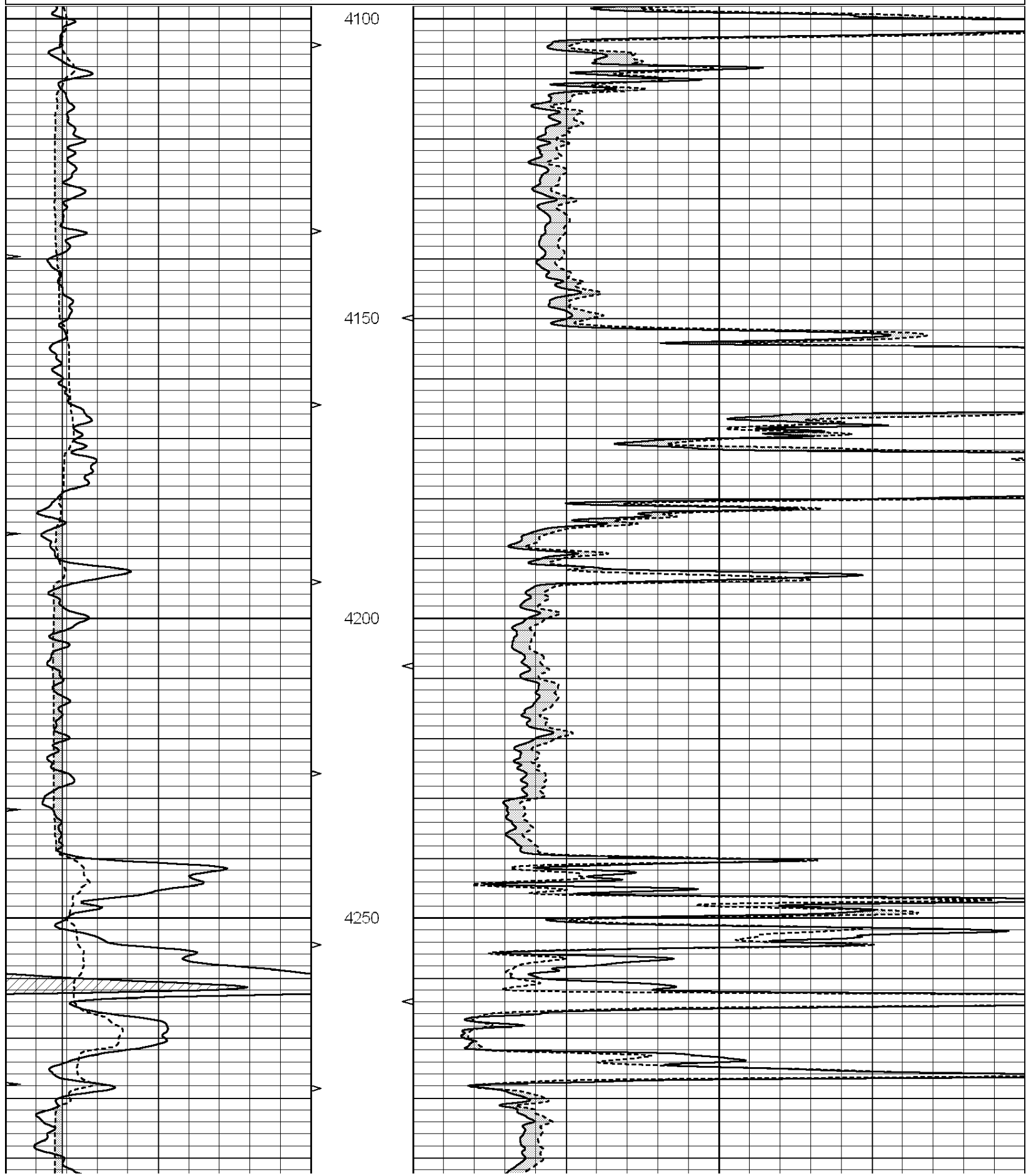
<<< Fold Here >>>

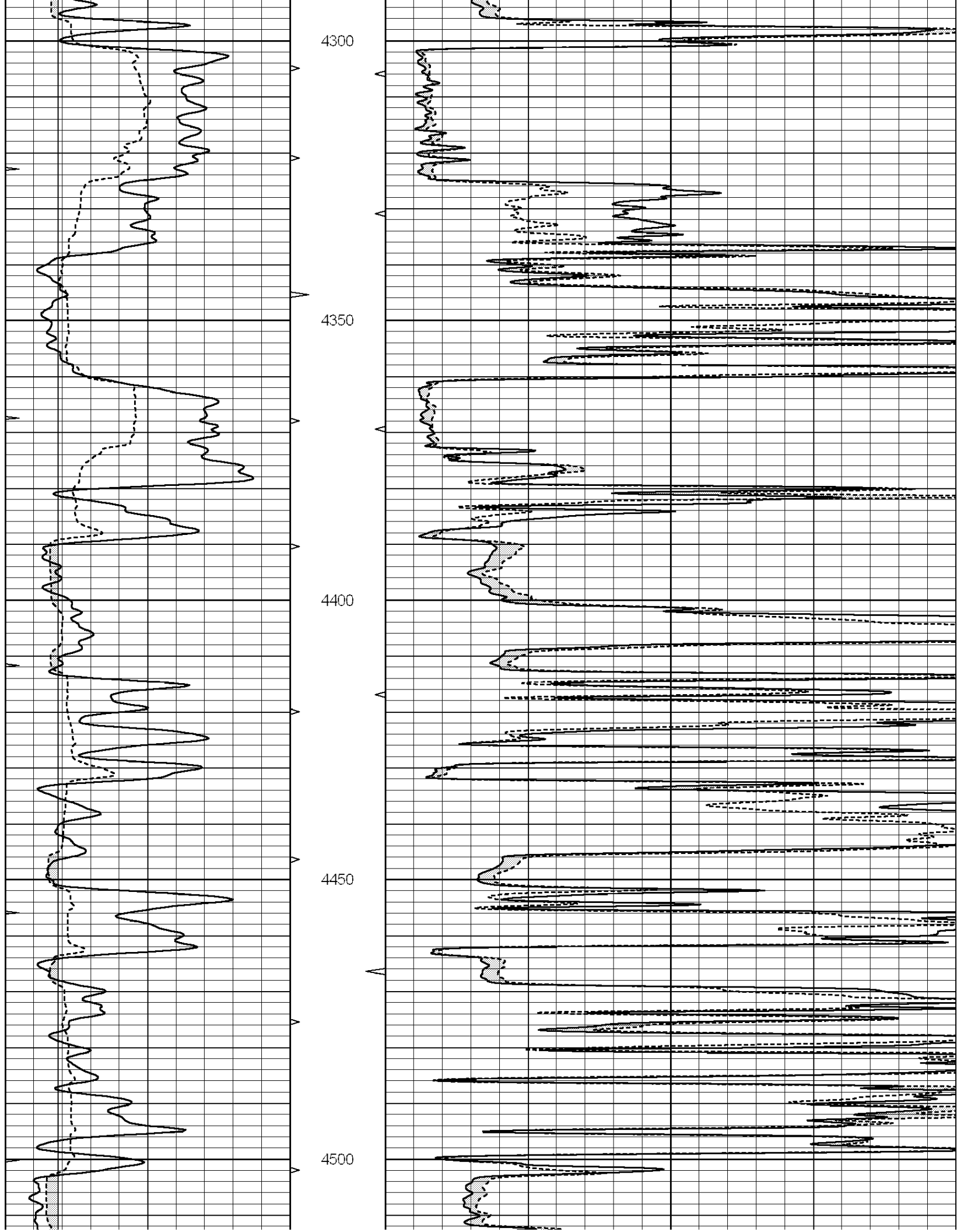
All interpretations are opinions based on inferences from electrical or other measurements and we cannot and do not guarantee the accuracy or correctness of any interpretation, and we shall not, except in the case of gross or willful negligence on our part, be liable or responsible for any loss, costs, damages, or expenses incurred or sustained by anyone resulting from any interpretation made by any of our officers, agents or employees. These interpretations are also subject to our general terms and conditions set out in our current Price Schedule.

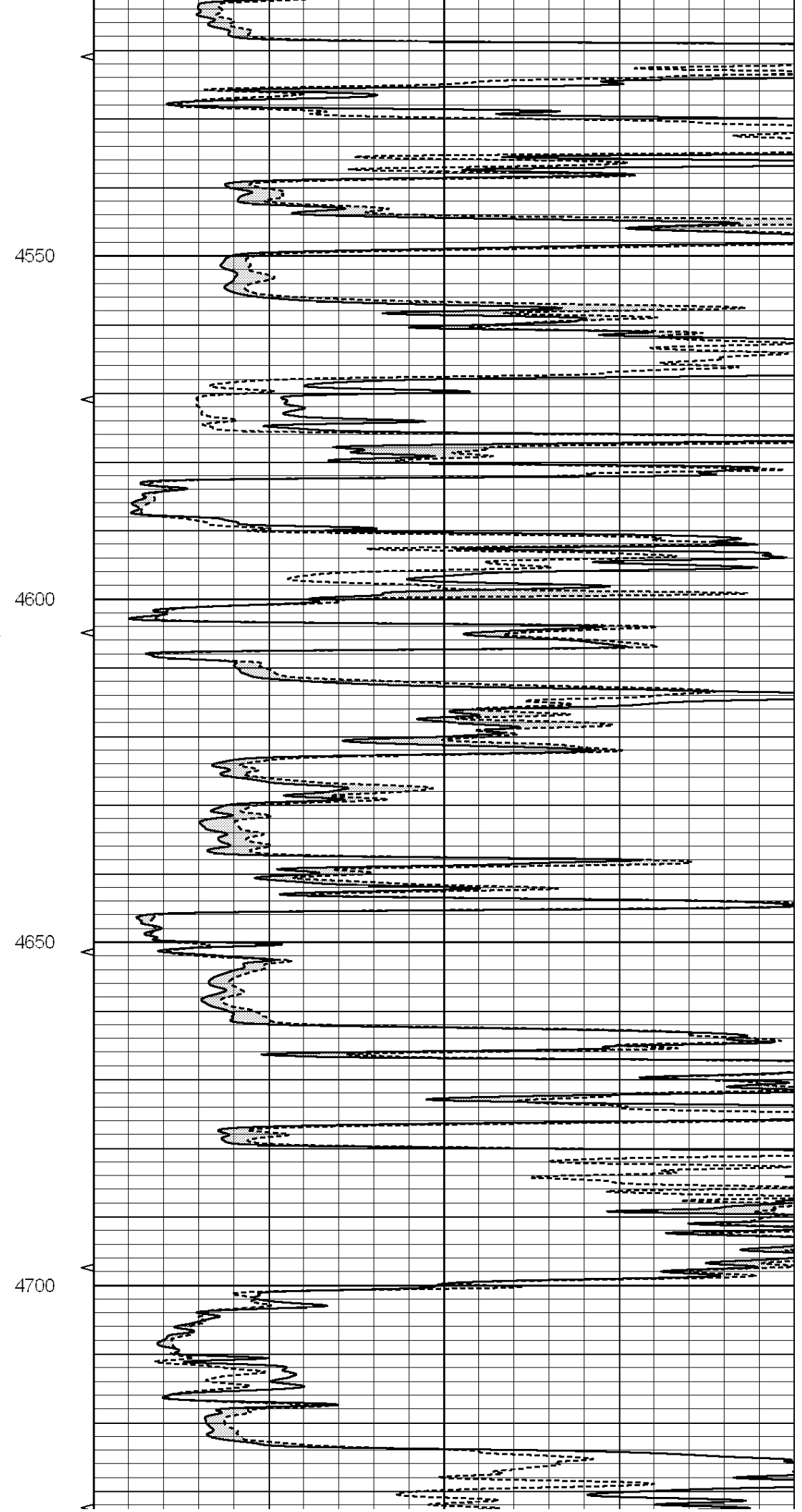
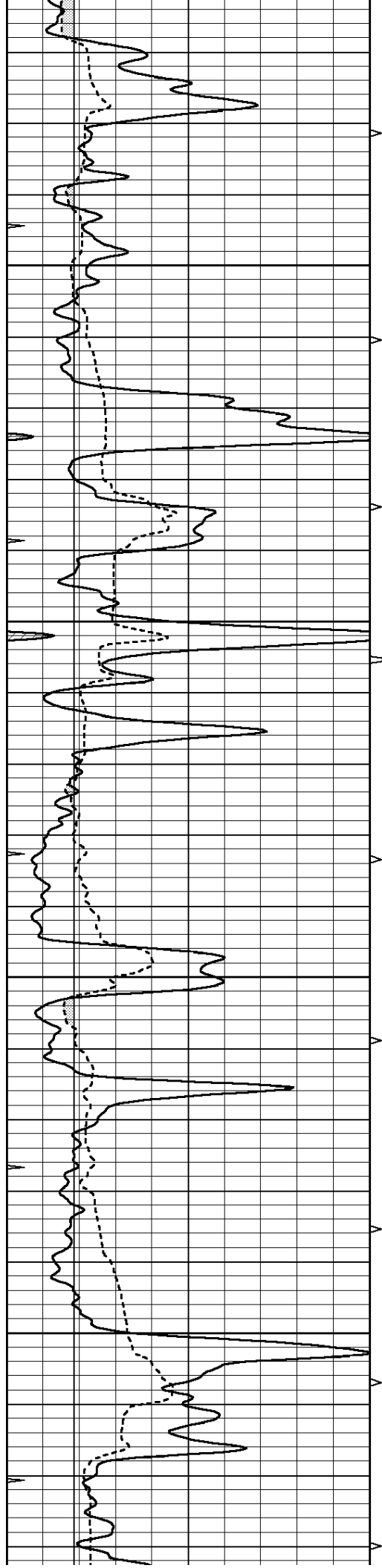
Comments

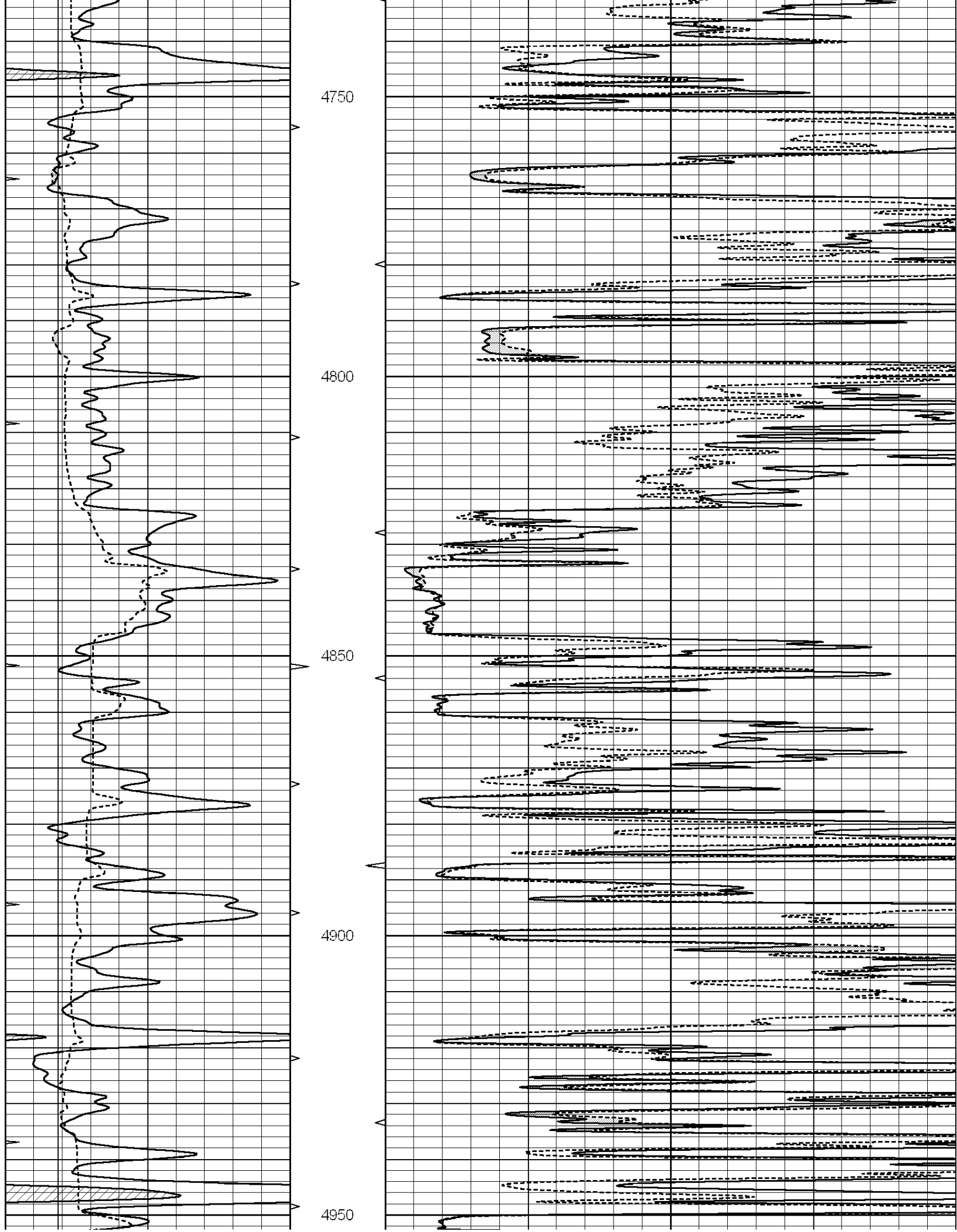
SUPERIOR WELL SERVICES
 785-628-6395
THANK YOU FOR YOUR BUSINESS
 DIRECTIONS: WRIGHT, KS - SOUTH TO SADDLE RD - 3/4 MILE EAST
 SOUTH INTO

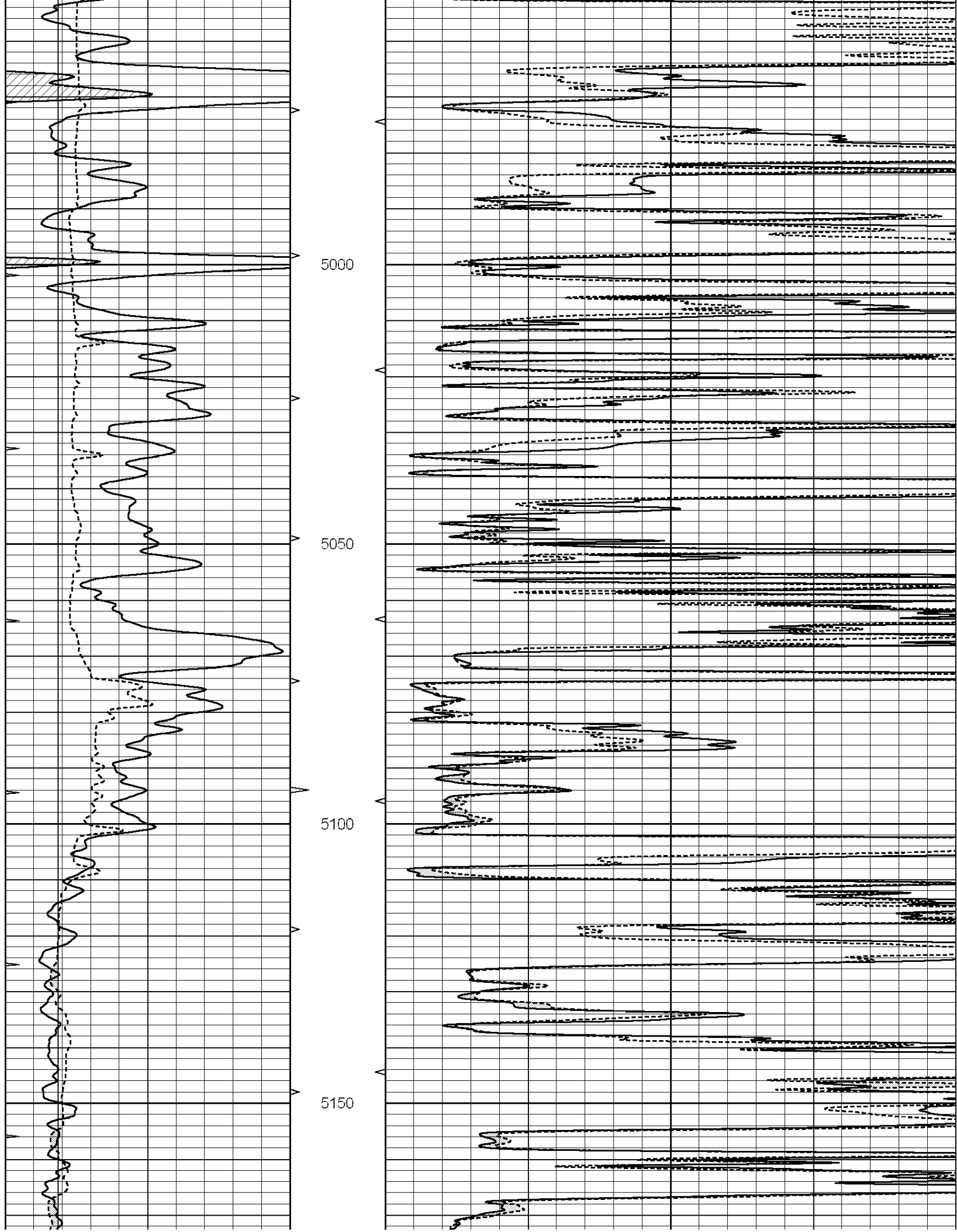
0	GAMMA RAY (GAPI)	150	ABHV	0	MEL1.5 (Ohm-m)	40
6	CALIPER (in)	16	10 (ft3)	0 0	MEL2.0 (Ohm-m)	40
0	MINMK	20	TBHV			
			0 (ft3)	10		

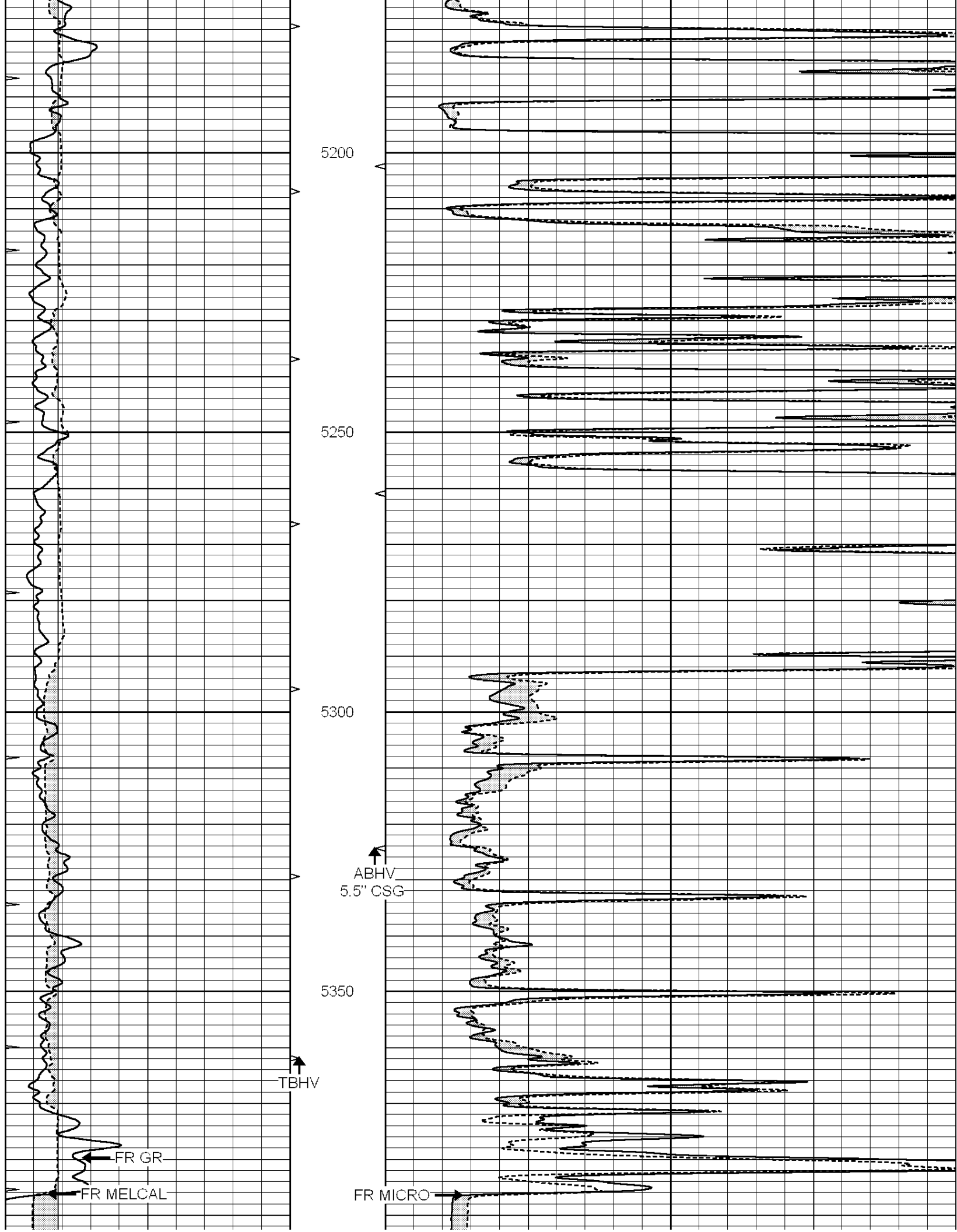












5400
LTD 5404

0	GAMMA RAY (GAPI)	150	ABHV	0	MEL1.5 (Ohm-m)	40
6	CALIPER (in)	16	10 (ft3)	0	MEL2.0 (Ohm-m)	40
0	MINMK	20	TBHV			
			0 (ft3)	10		

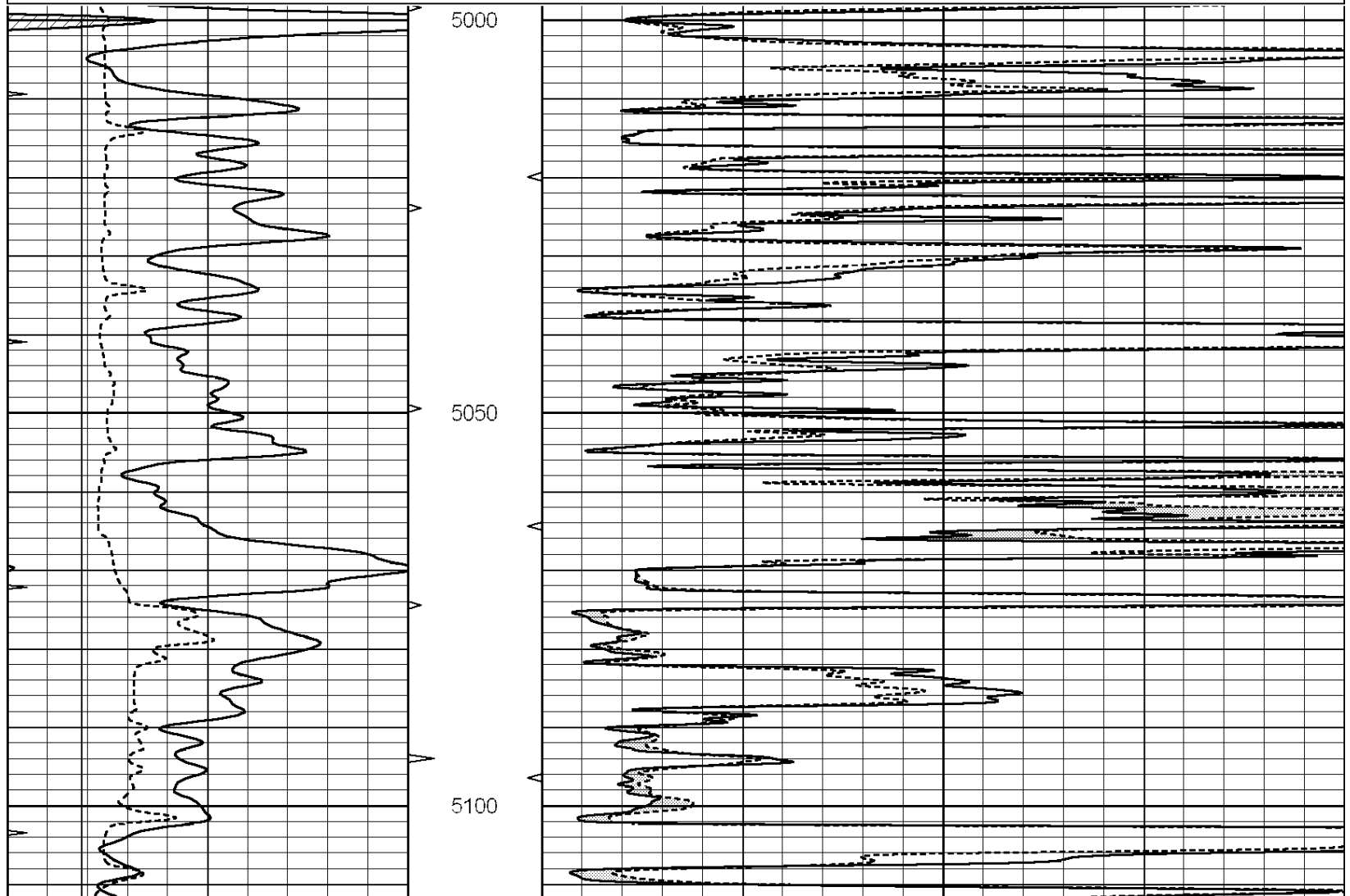


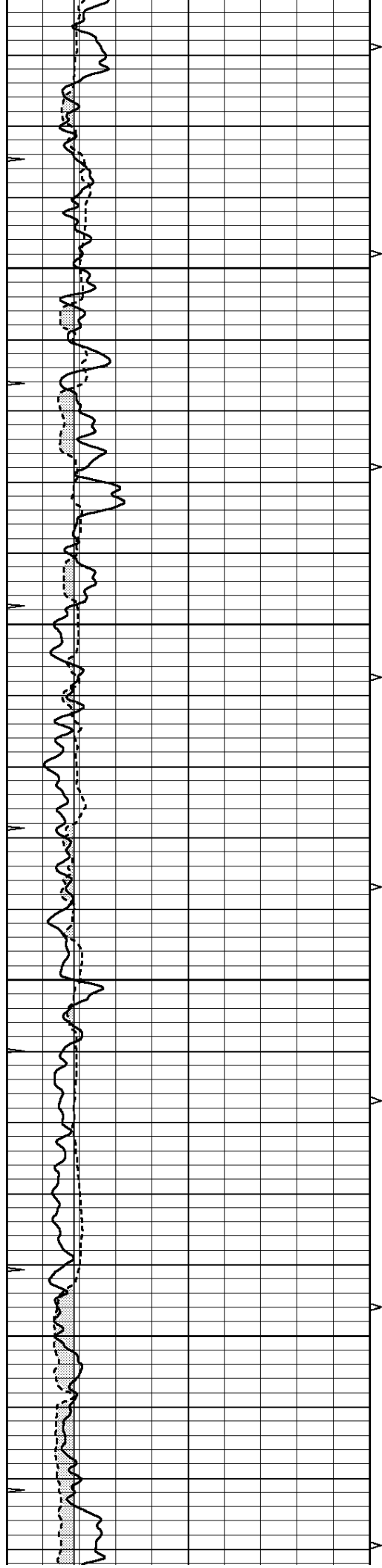
SUPERIOR
Hays,
Kansas

REPEAT SECTION

Database File: 005687pe.db
 Dataset Pathname: pass5.1
 Presentation Format: micro
 Dataset Creation: Fri Sep 17 10:52:46 2010 by Calc Open-Cased 090629
 Charted by: Depth in Feet scaled 1:240

0	GAMMA RAY (GAPI)	150	ABHV	0	MEL1.5 (Ohm-m)	40
6	CALIPER (in)	16	10 (ft3)	0	MEL2.0 (Ohm-m)	40
0	MINMK	20	TBHV			
			0 (ft3)	10		



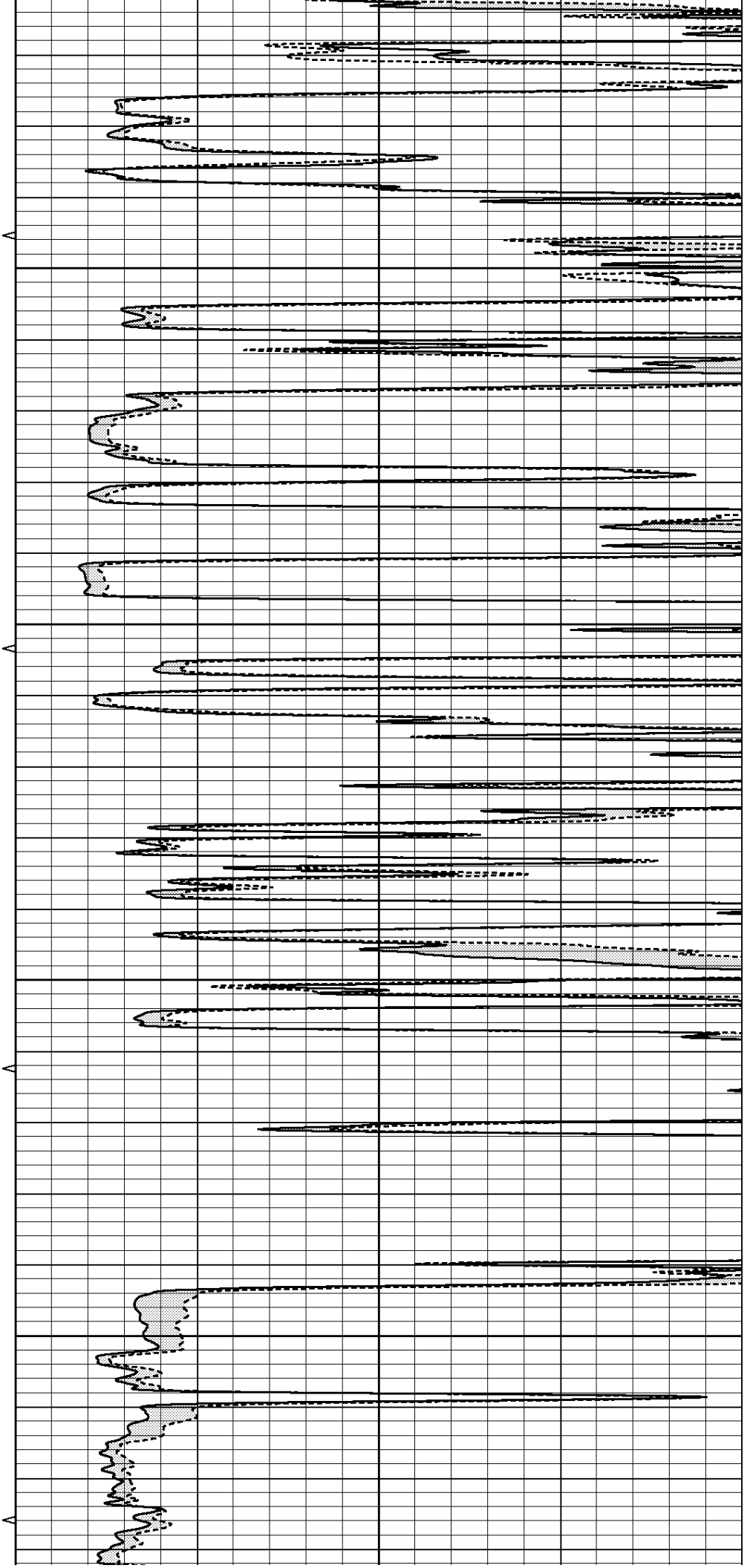


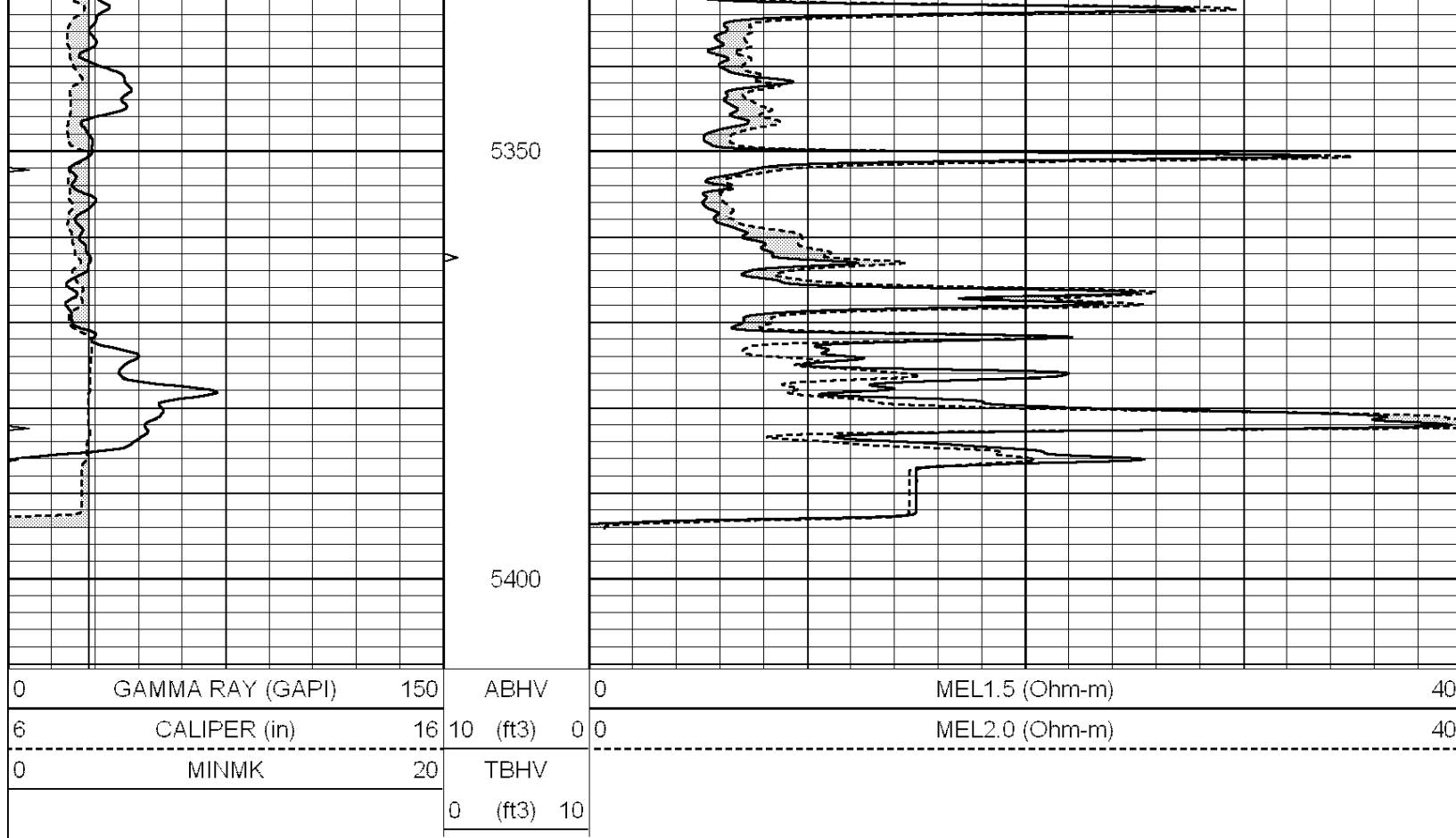
5150

5200

5250

5300





Calibration Report

Database File: 005687pe.db
 Dataset Pathname: pass6.1
 Dataset Creation: Fri Sep 17 11:32:03 2010 by Calc Open-Cased 090629

MICRO Calibration Report

Serial Number:	MICRO4	
Tool Model:	PROBE	
Performed:	Sun Sep 12 11:49:06 2010	
Caliper Calibration:	Gain=1.664	Offset=-1.665
References	Low Cal 7.400	High Cal 12.000
Readings	5.449	8.214
1.5" Calibration:	Gain=43.000	Offset=-0.400
References	Low Cal 0.000	High Cal 20.000
Readings	0.009	1.541
2" Calibration:	Gain=40.000	Offset=0.700
References	Low Cal 0.000	High Cal 20.000
Readings	0.004	1.198

Gamma Ray Calibration Report

Serial Number:	GR5	
Tool Model:	OPEN	
Performed:	Thu Sep 16 07:13:10 2010	
Calibrator Value:	1.0	GAPI

Background Reading:

0.0

cps

Calibrator Reading:

1.0

cps

Sensitivity:

0.6400

GAPI/cps