



**SUPERIOR
Hays,
Kansas**

**DUAL
INDUCTION
LOG**

Company VINCENT OIL CORPORATION
Well STEELE #1-6
Field
County FORD State KANSAS

Company VINCENT OIL CORP.
Well STEELE #1-6
Field
County FORD
State KANSAS

Location: API #: 15-057-20695-0000
1810' FNL & 2370' FWL
SEC 6 TWP 28S RGE 23W
Permanent Datum GROUND LEVEL Elevation 2499
Log Measured From KELLY BUSHING 12' A.G.L.
Drilling Measured From KELLY BUSHING
Other Services
CDL/CNL/PE
MEL/SON
Elevation
K.B. 2511
D.F. 2509
G.L. 2499

Date	9-17-10
Run Number	ONE
Depth Driller	5400
Depth Logger	5404
Bottom Logged Interval	5402
Top Log Interval	0
Casing Driller	653
Casing Logger	650
Bit Size	7.875
Type Fluid in Hole	CHEMICAL MUD
Density / Viscosity	9.0 / 53
pH / Fluid Loss	10.0 / 10.0
Source of Sample	FLOWLINE
Rim @ Meas. Temp	0.45 @ 87F
Rmf @ Meas. Temp	0.34 @ 87F
Rmc @ Meas. Temp	0.54 @ 87F
Source of Rmf / Rmc	MEASURED
Rim @ BHT	0.30 @ 129F
Time Circulation Stopped	2 HOURS
Time Logger on Bottom	
Maximum Recorded Temperature	129F
Equipment Number	860
Location	HAYS, KS.
Recorded By	JEFF GRONEWEG
Witnessed By	KENLEBLANC

<<< Fold Here >>>

All interpretations are opinions based on inferences from electrical or other measurements and we cannot and do not guarantee the accuracy or correctness of any interpretation, and we shall not, except in the case of gross or willful negligence on our part, be liable or responsible for any loss, costs, damages, or expenses incurred or sustained by anyone resulting from any interpretation made by any of our officers, agents or employees. These interpretations are also subject to our general terms and conditions set out in our current Price Schedule.

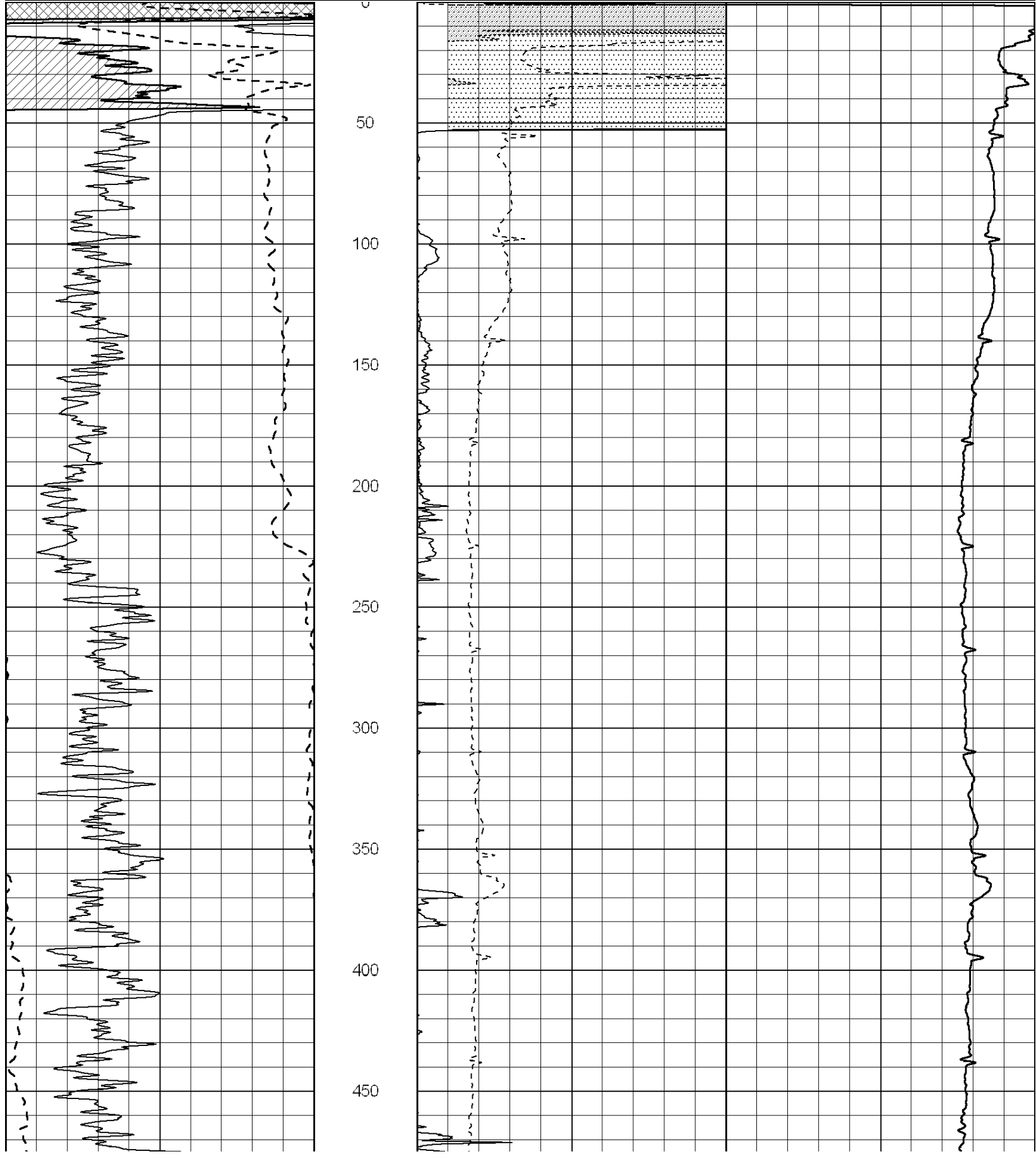
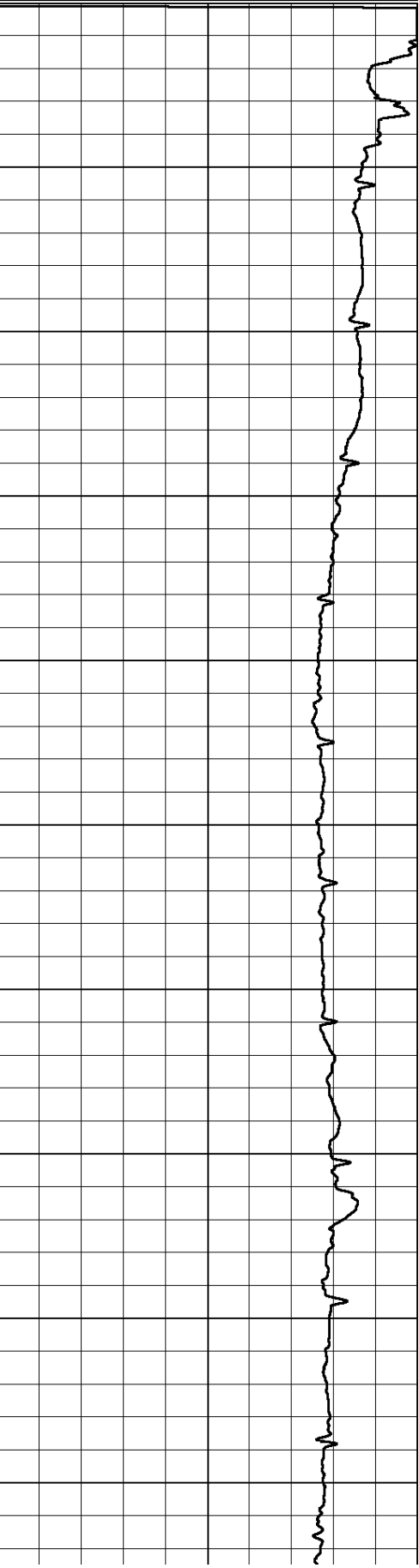
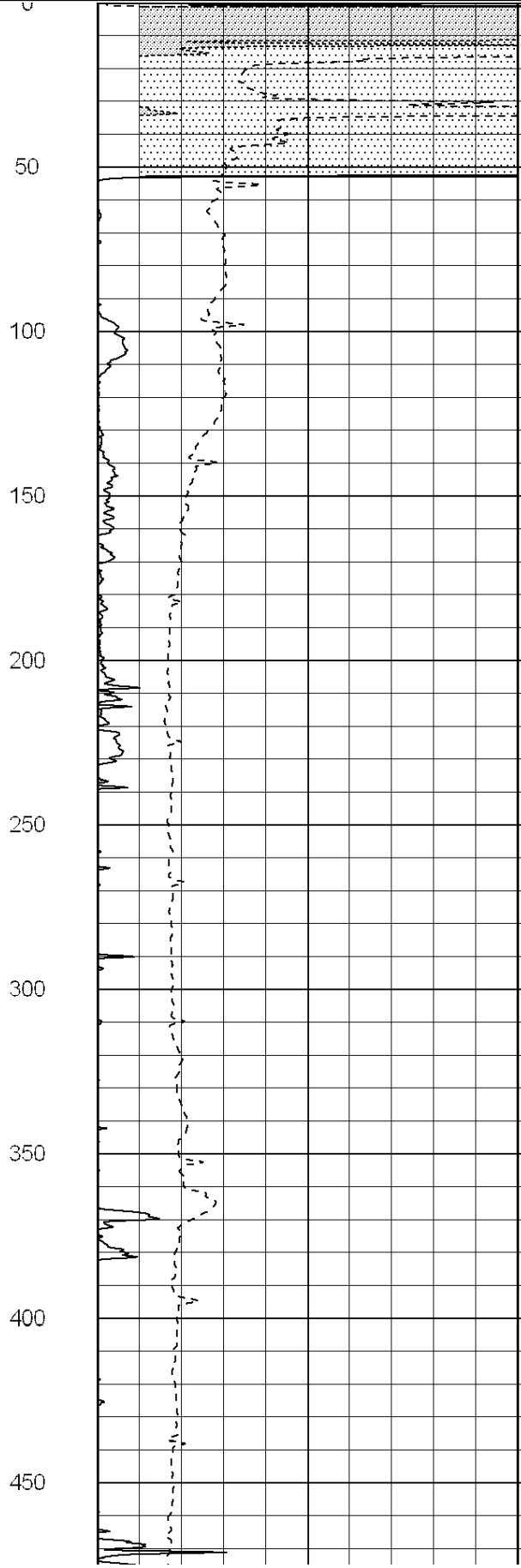
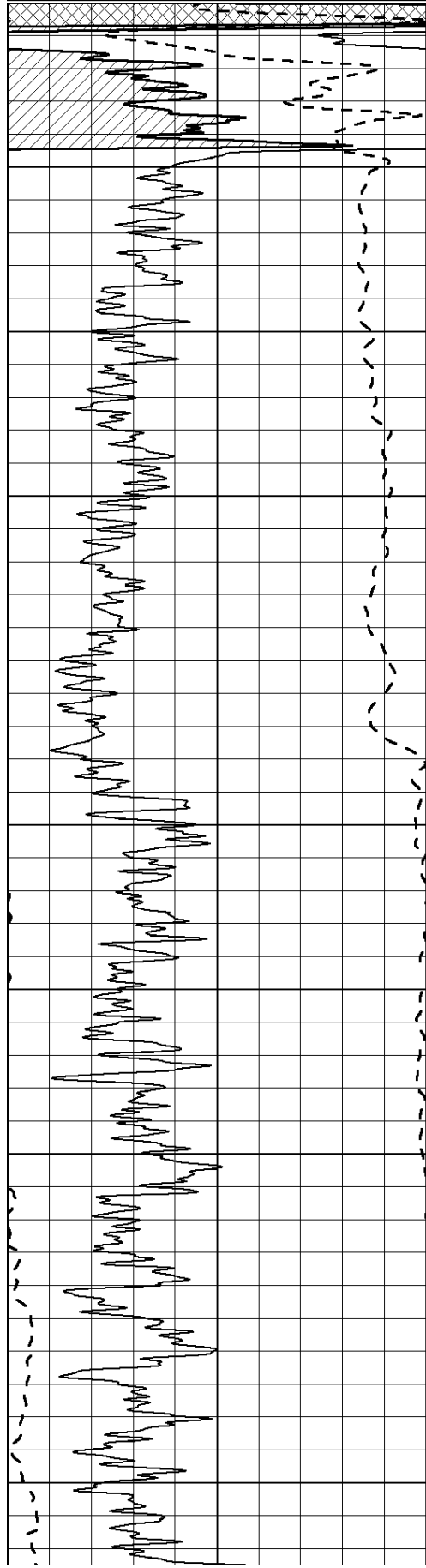
Comments

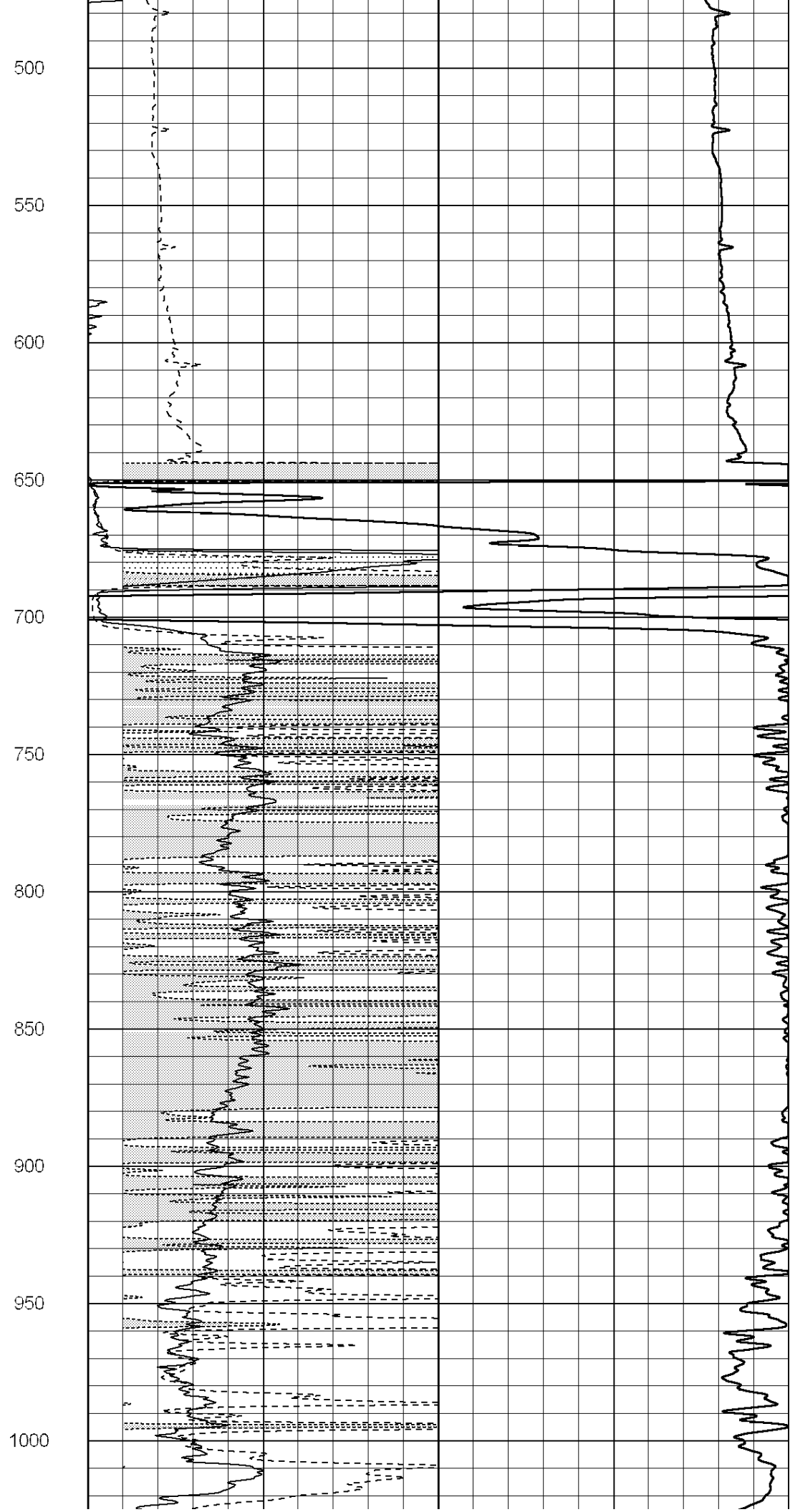
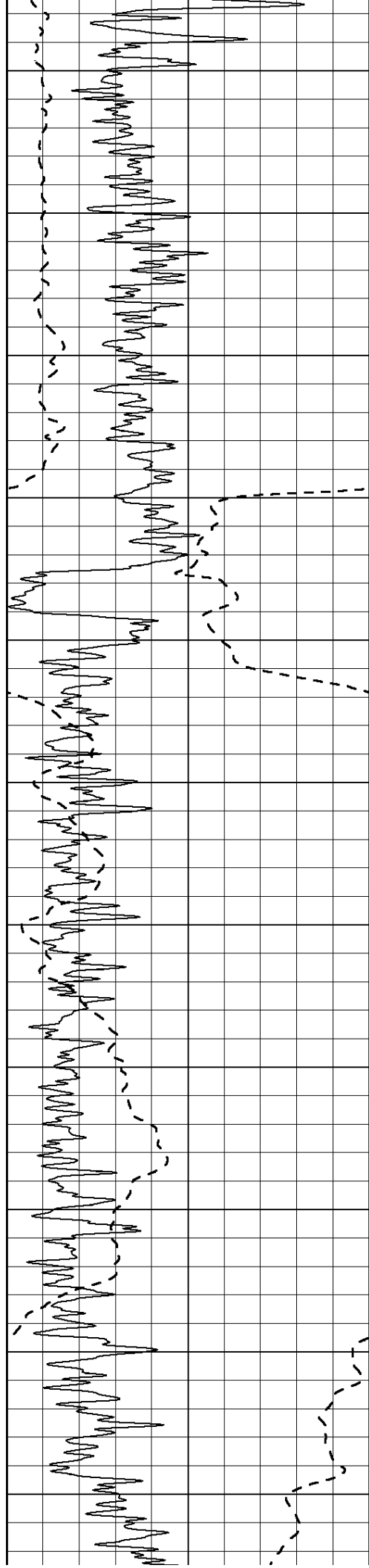
SUPERIOR WELL SERVICES
 785-628-6395
THANK YOU FOR YOUR BUSINESS
 DIRECTIONS: WRIGHT, KS - SOUTH TO SADDLE RD - 1 1/2 MILE EAST
 SOUTH INTO

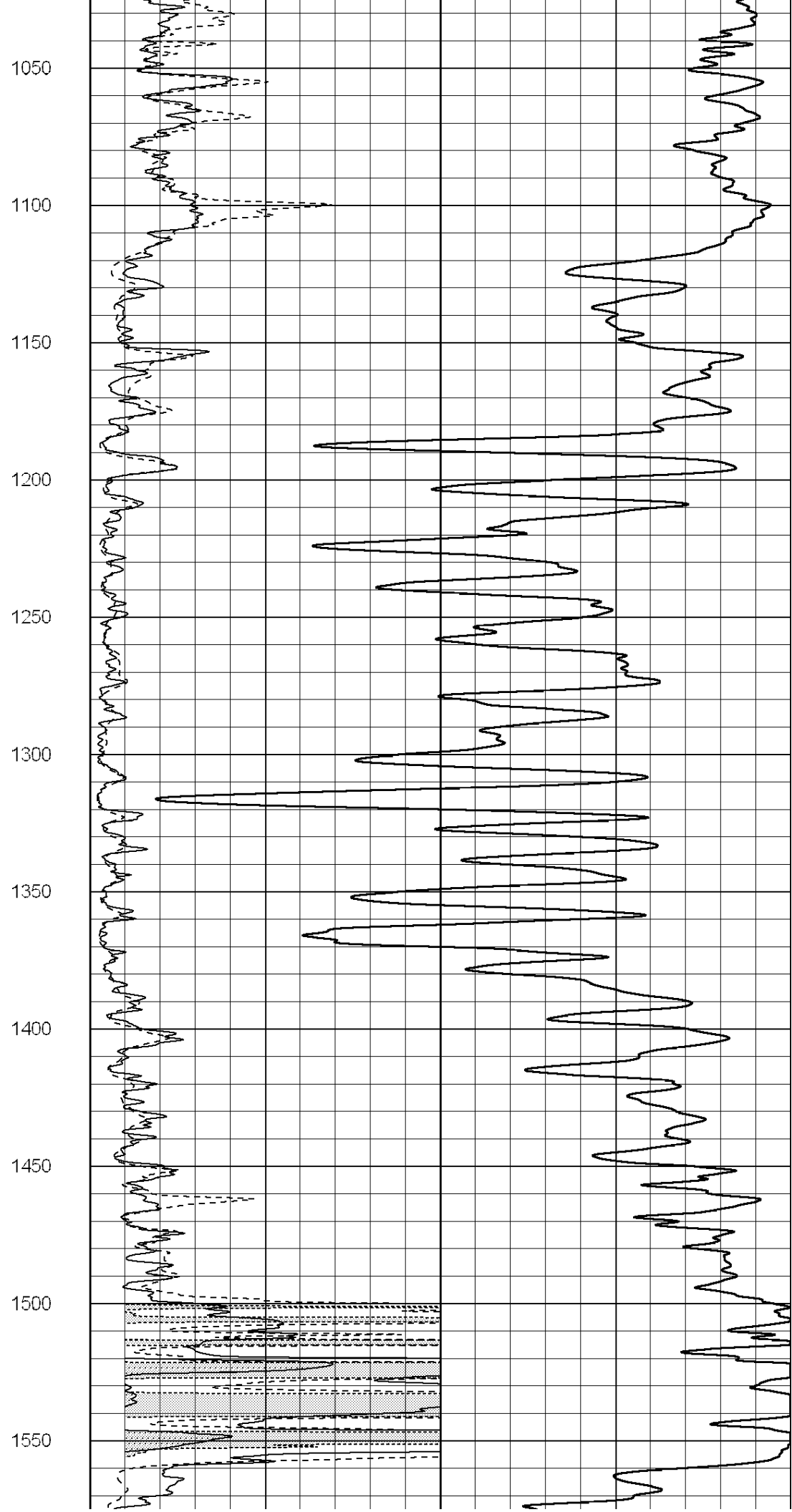
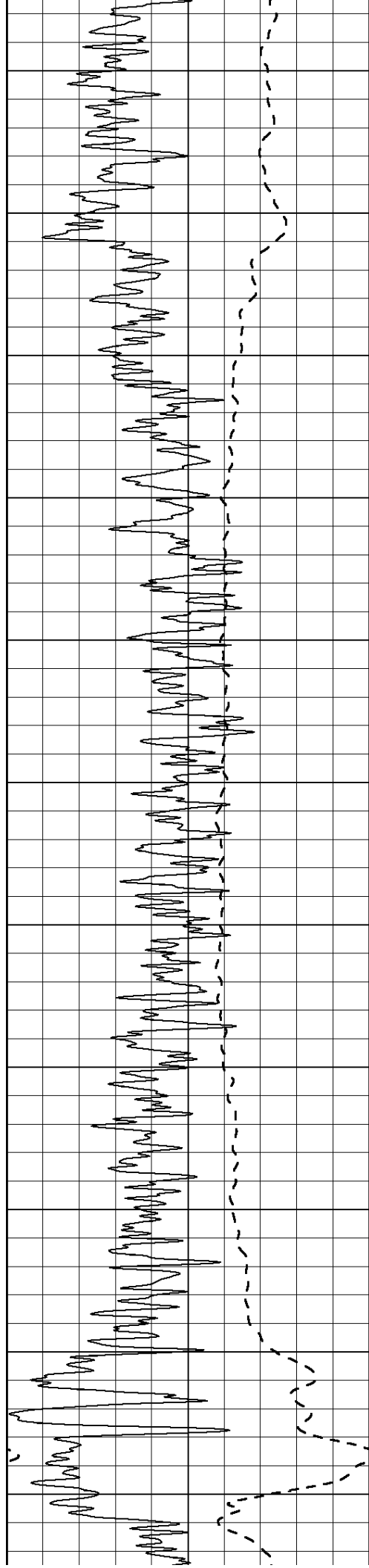
0	Gamma Ray (GAPI)	150
-100	SP (mV)	100

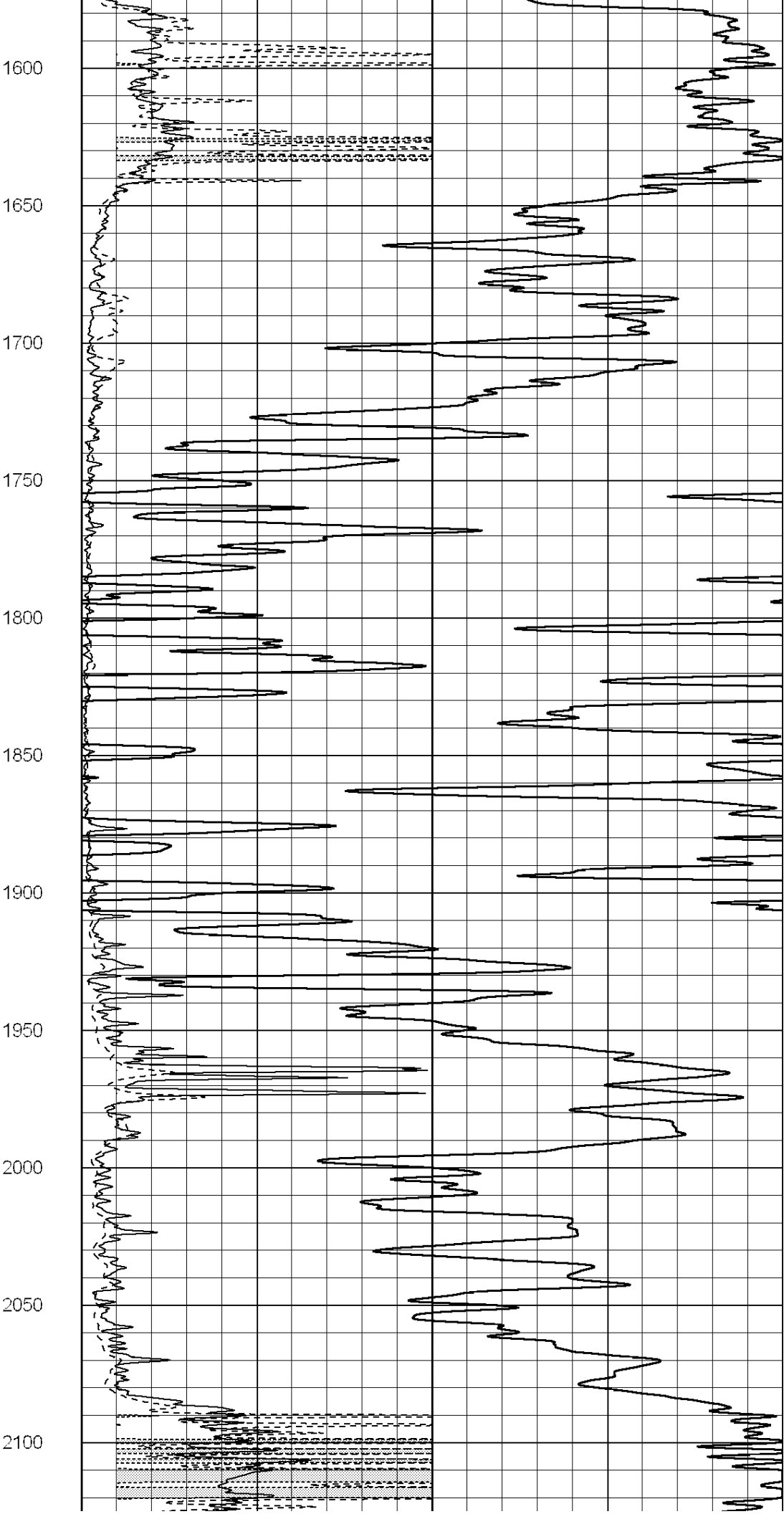
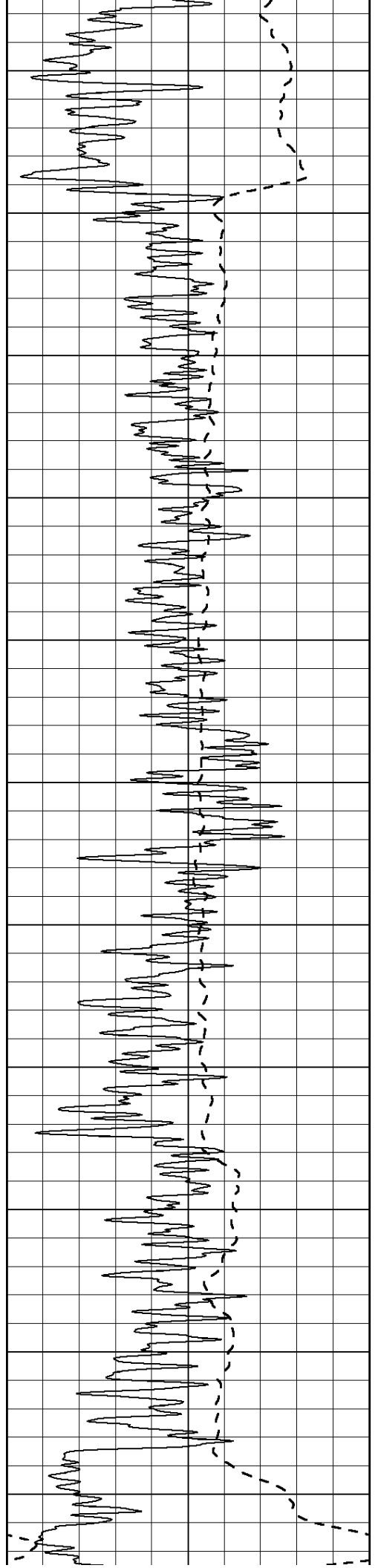
0	RLL3 (Ohm-m)	50
0	Deep Induction (Ohm-m)	50

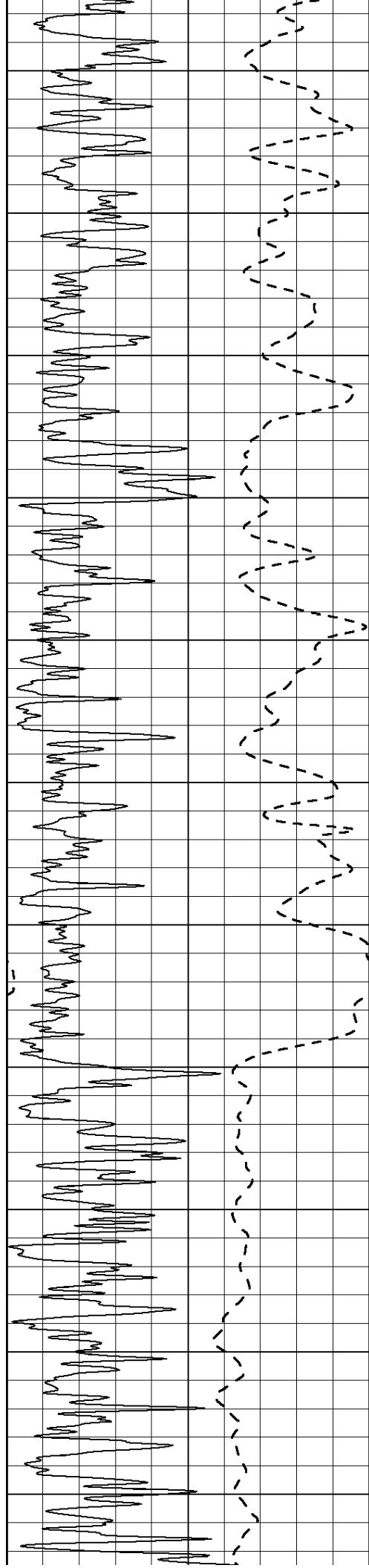
1000		CILD (mmho/m)	0
50	RILD X10 (Ohm-m)	500	
50	RLL3 X10 (Ohm-m)	500	











2150

2200

2250

2300

2350

2400

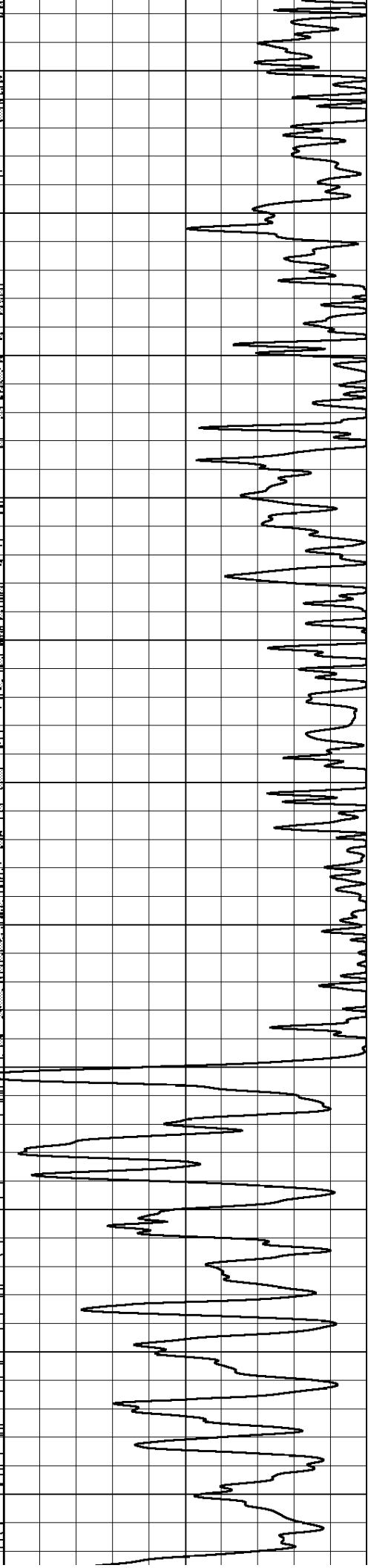
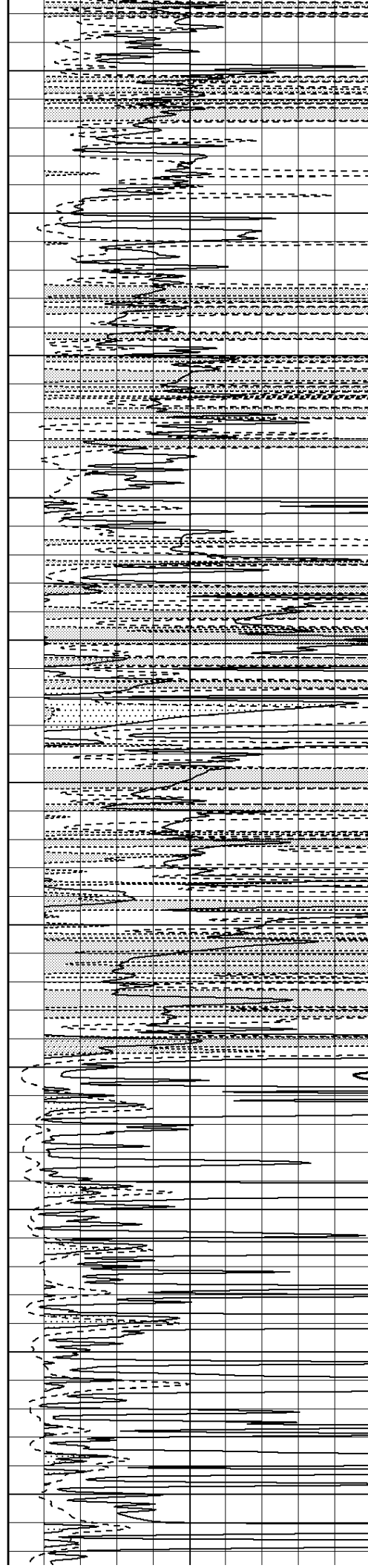
2450

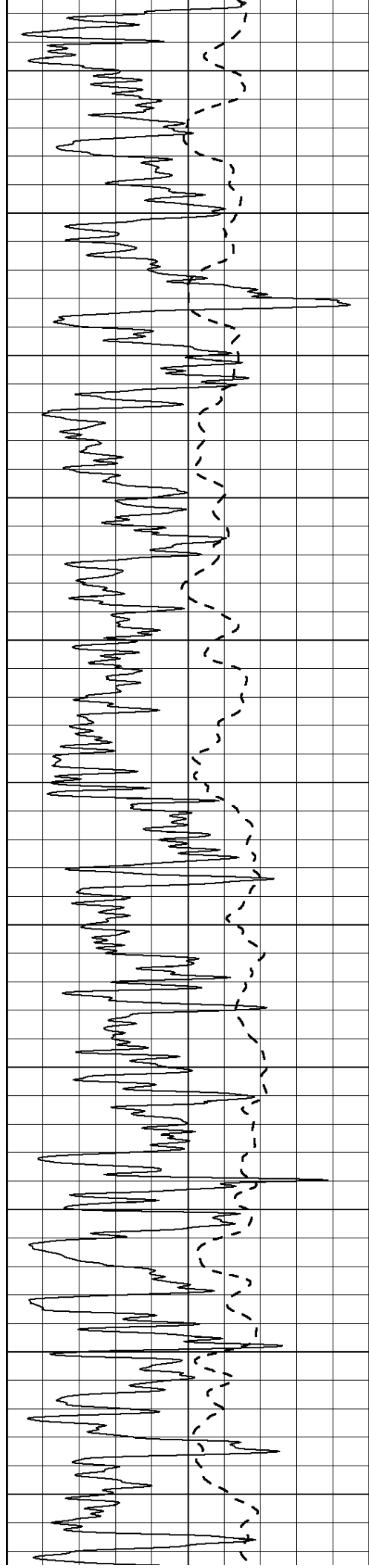
2500

2550

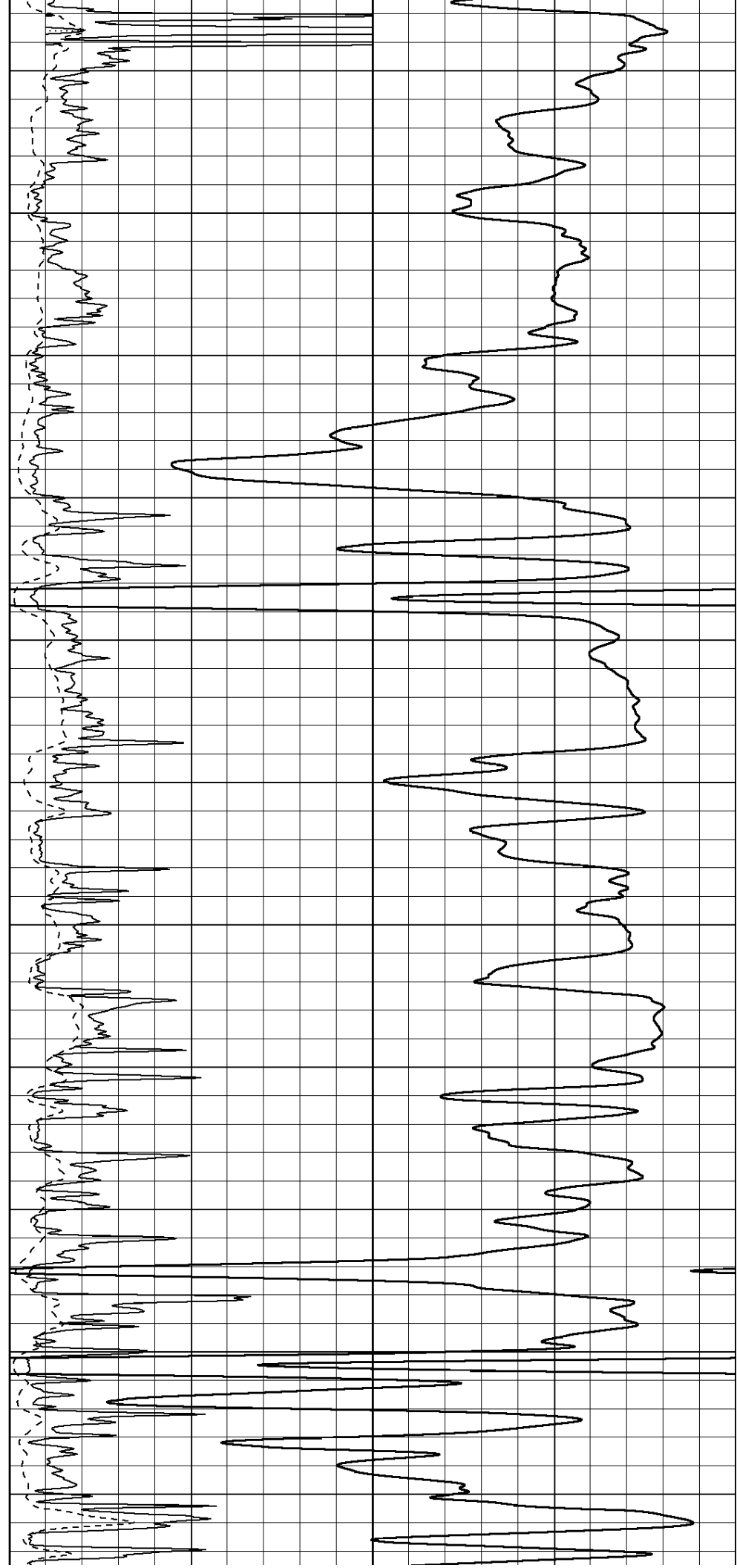
2600

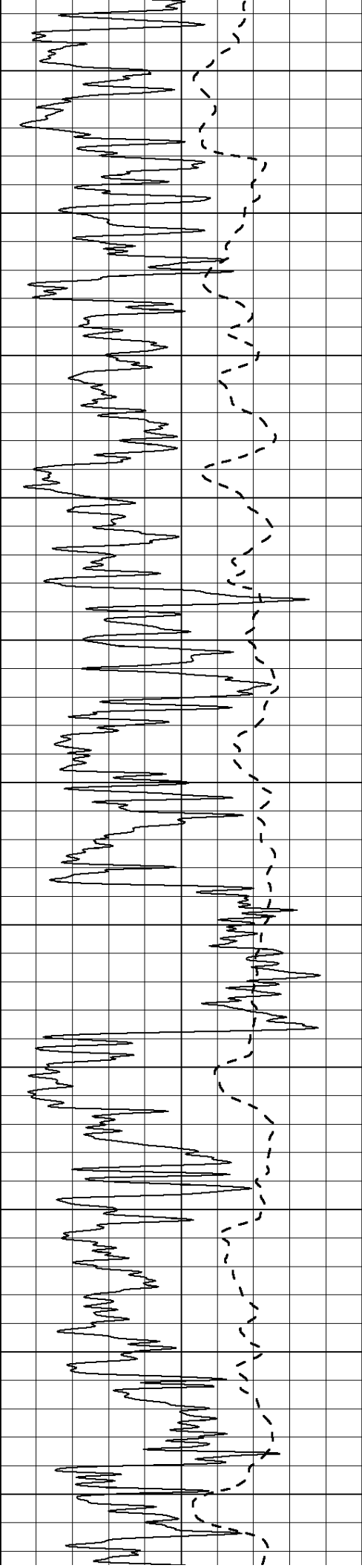
2650



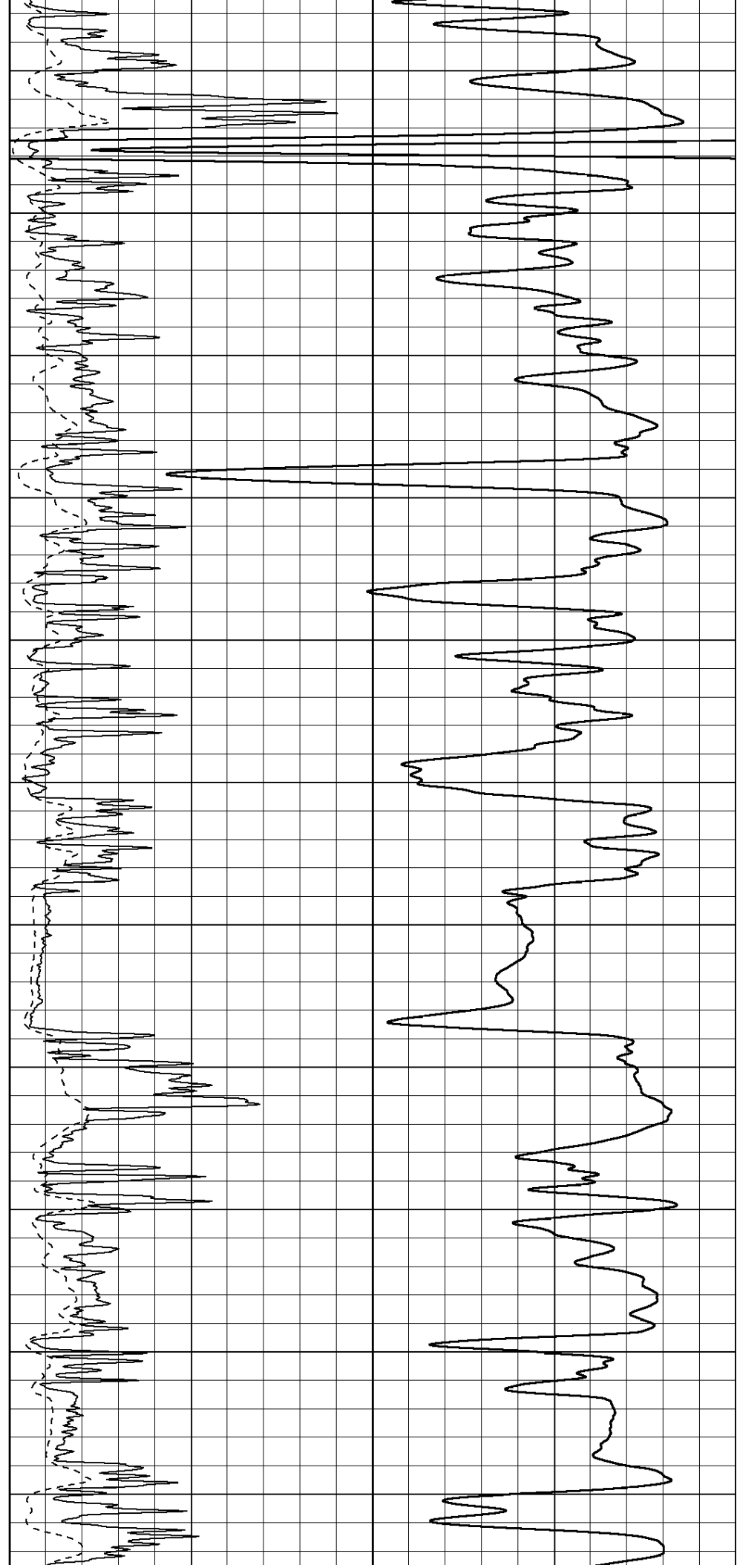


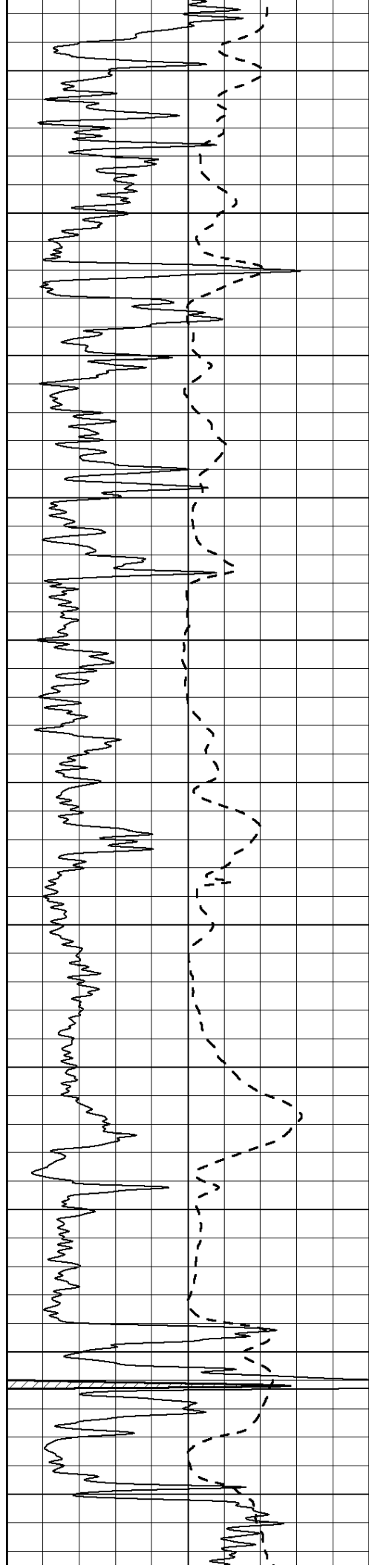
2700
2750
2800
2850
2900
2950
3000
3050
3100
3150
3200



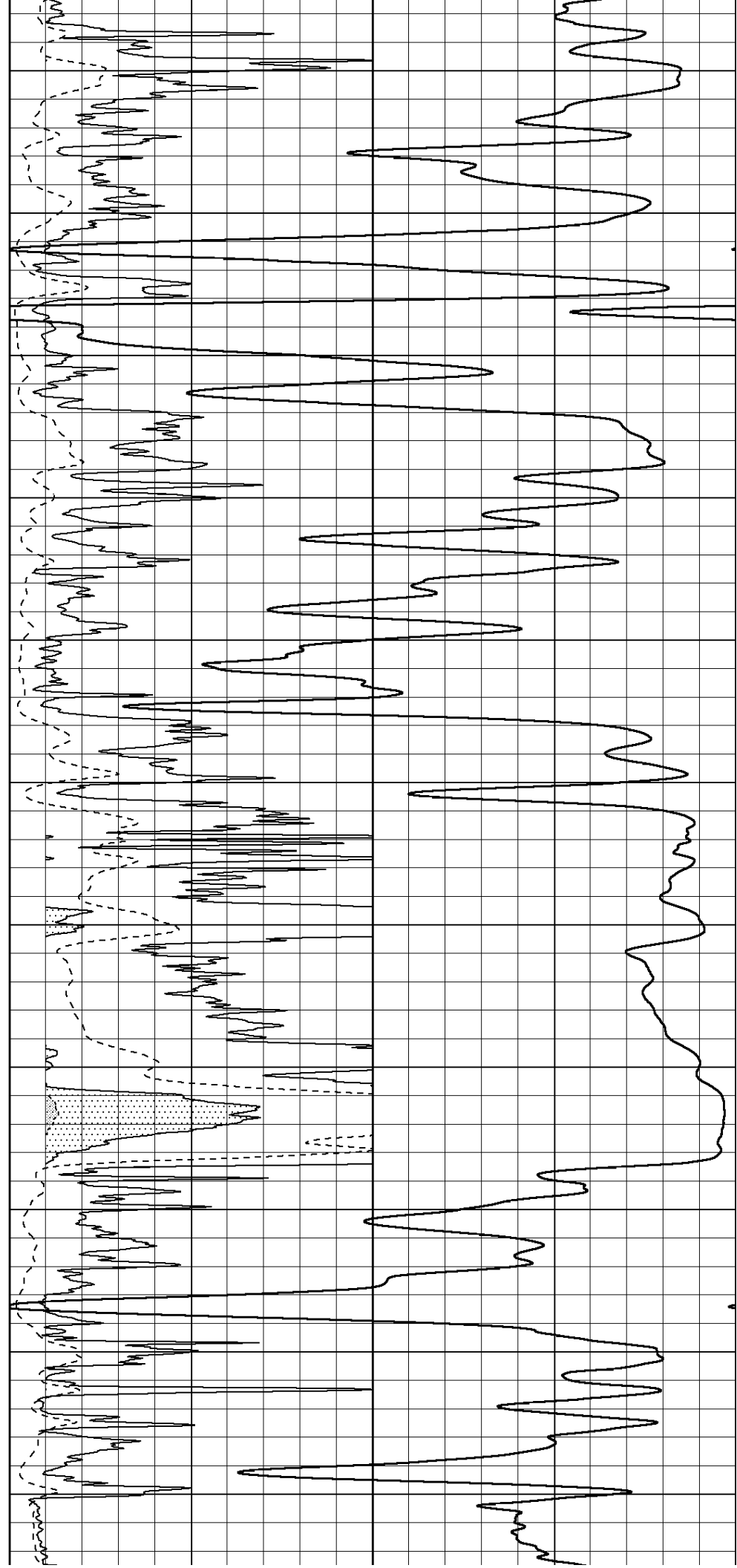


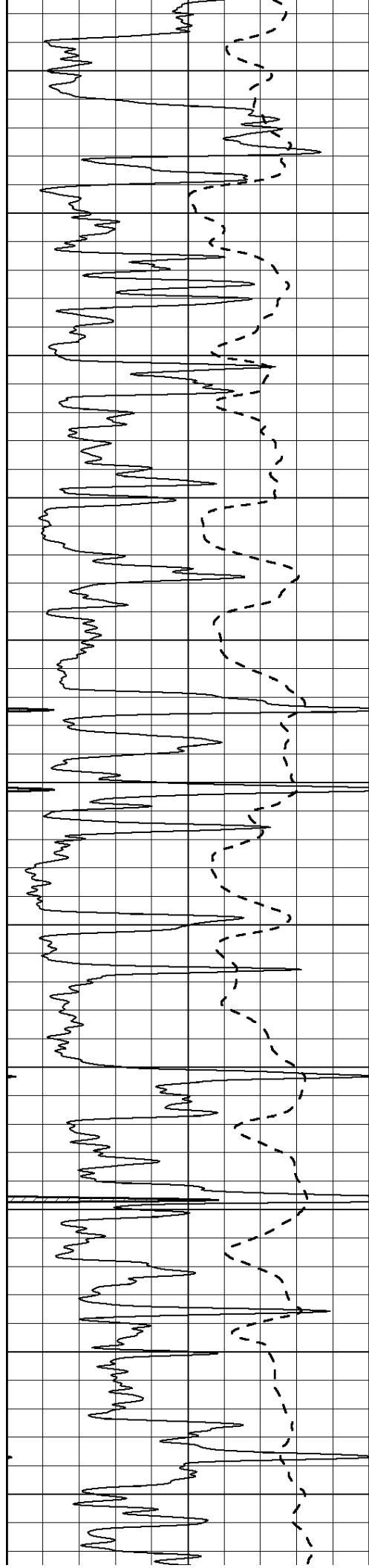
3250
3300
3350
3400
3450
3500
3550
3600
3650
3700
3750



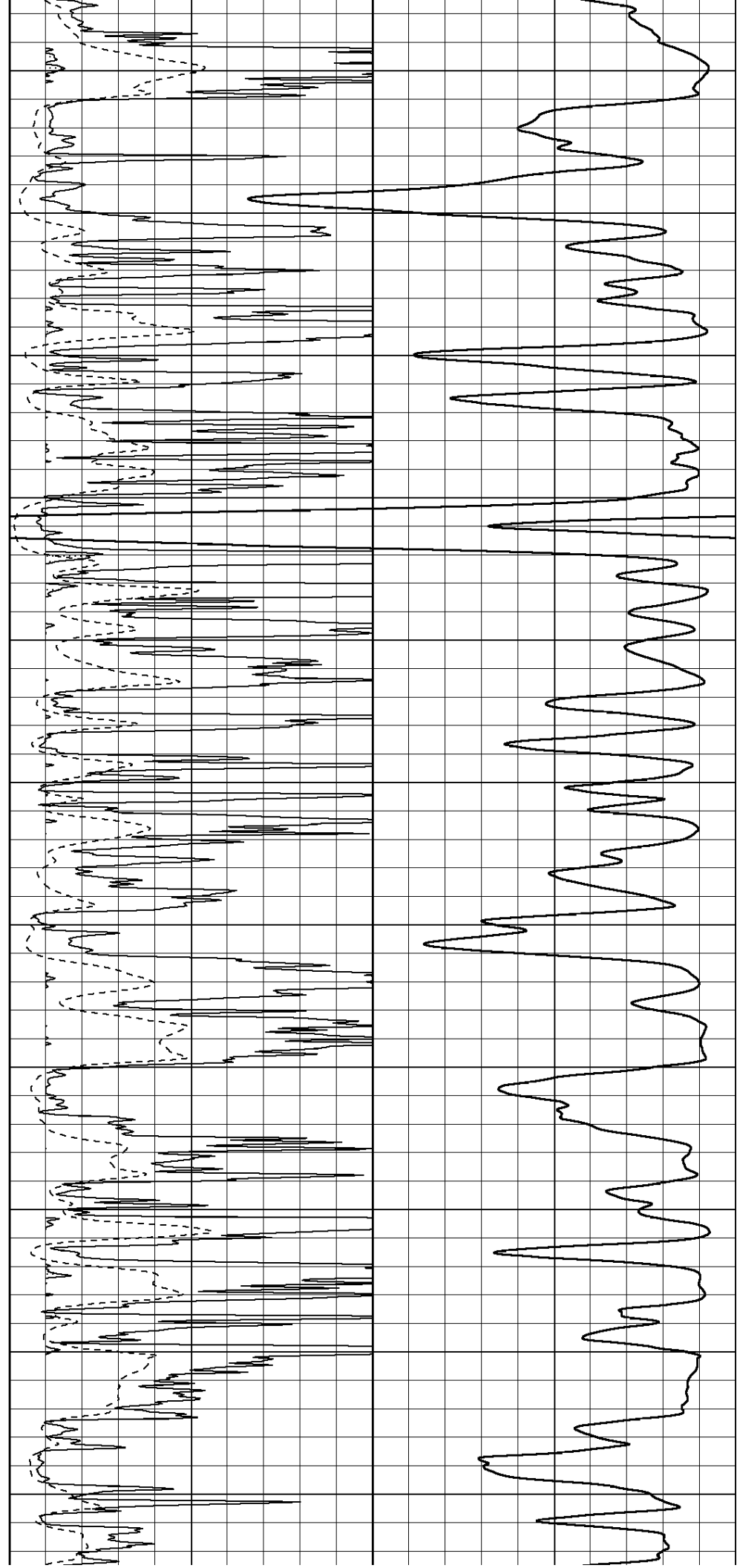


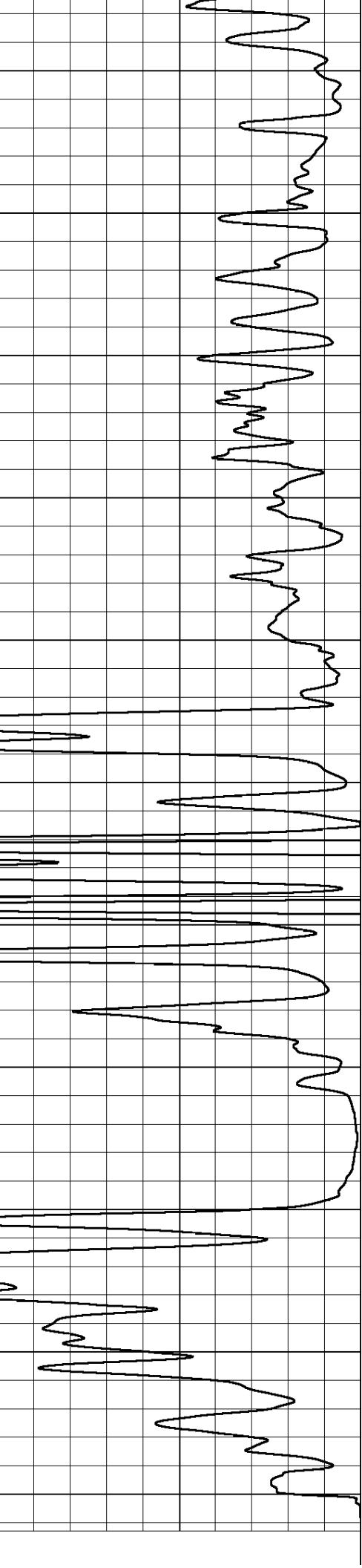
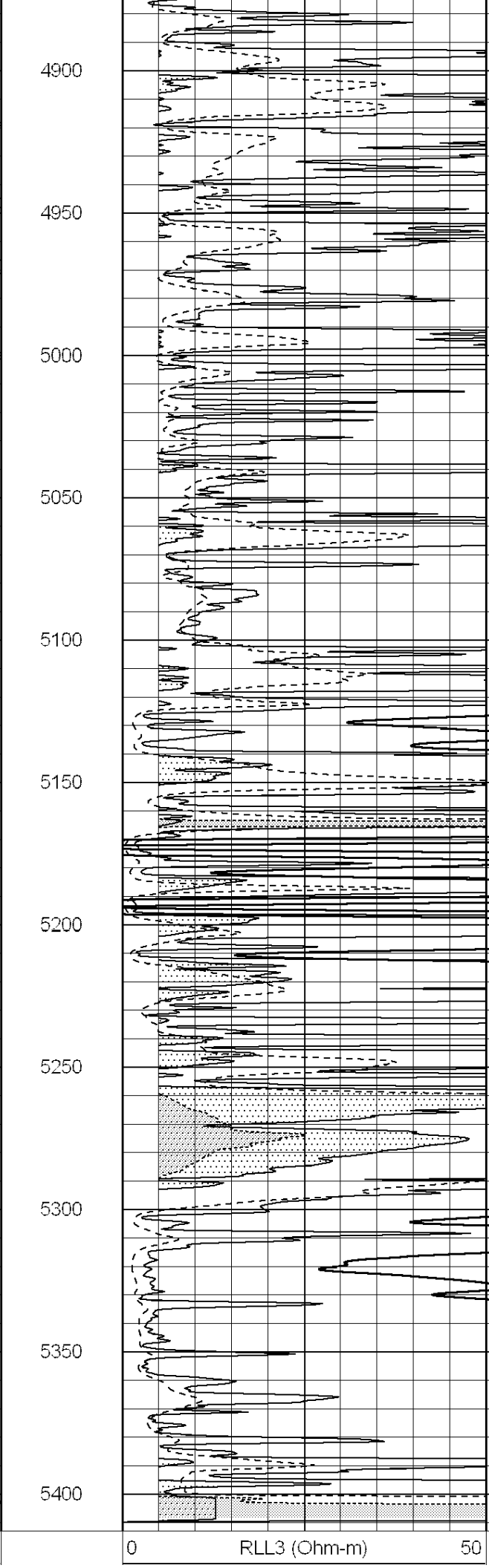
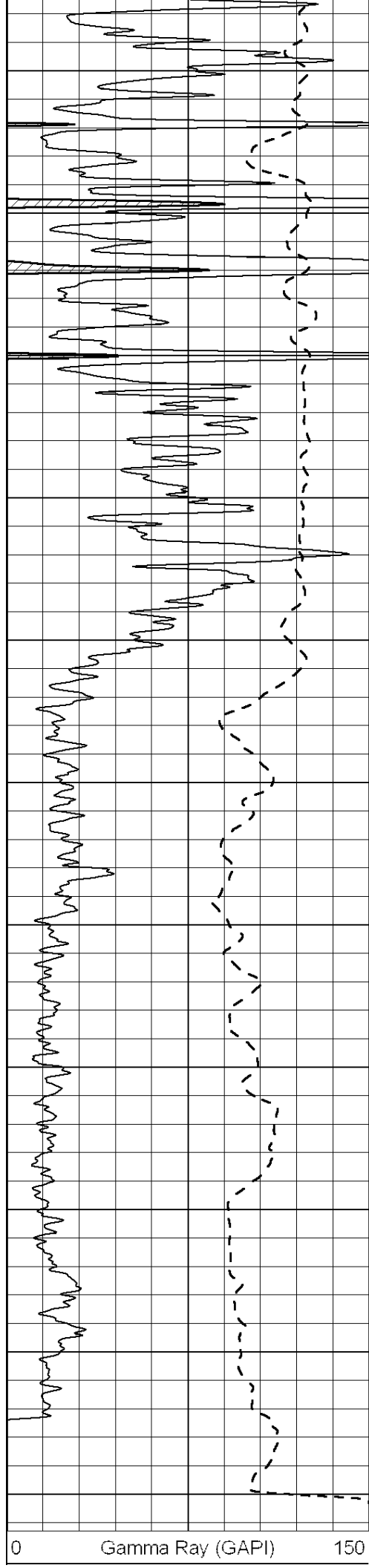
3800
3850
3900
3950
4000
4050
4100
4150
4200
4250
4300





4350
4400
4450
4500
4550
4600
4650
4700
4750
4800
4850





-100 SP (mV) 100

0 Deep Induction (Ohm-m) 50

1000 CILD (mmho/m) 0

50 RILD X10 (Ohm-m) 500

50 RLL3 X10 (Ohm-m) 500

Database File: 005687pe.db
 Dataset Pathname: pass3.3
 Presentation Format: dil
 Dataset Creation: Fri Sep 17 09:27:35 2010 by Calc Open-Cased 090629
 Charted by: Depth in Feet scaled 1:240

0 GAMMA RAY (GAPI) 150

-100 SP (mV) 100

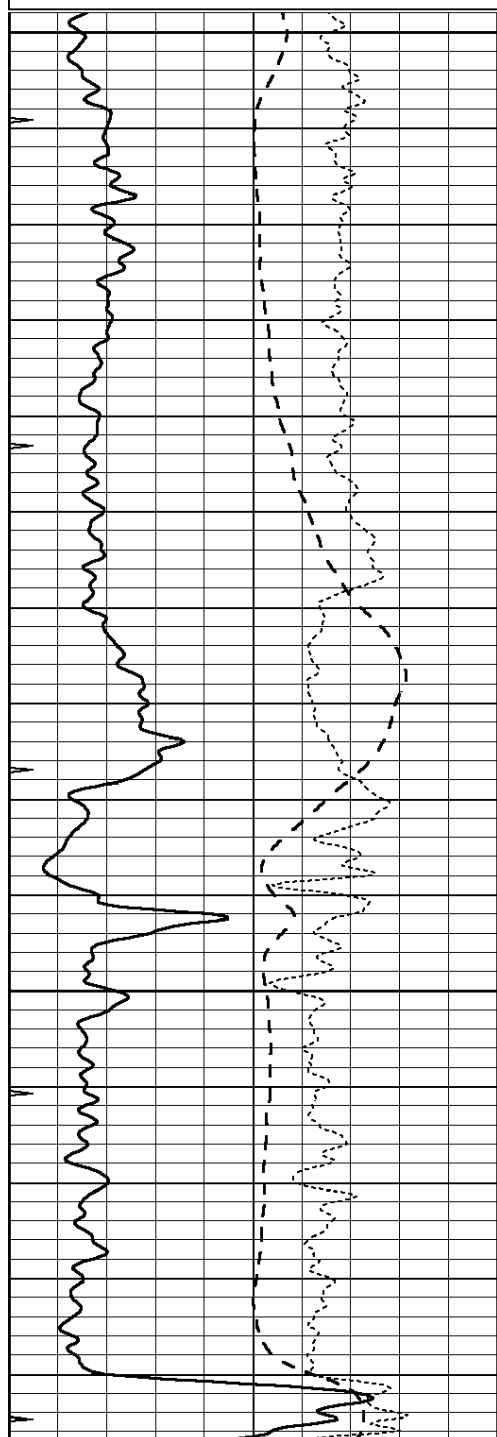
-250 RxoRt 50

0 MINMK 20

0.2 RLL3 (Ohm-m) 2000

0.2 DEEP INDUCTION (Ohm-m) 2000

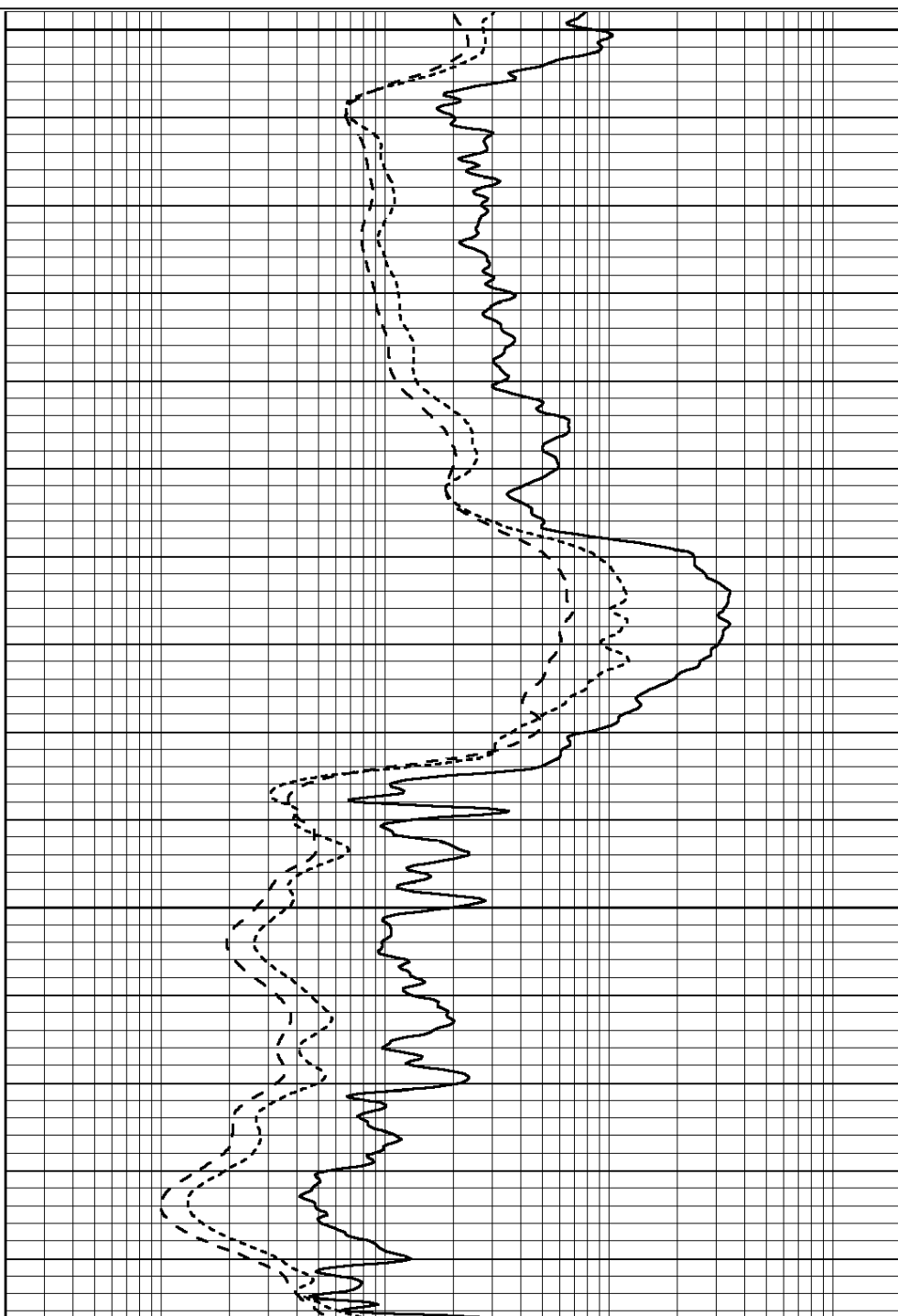
0.2 MEDIUM INDUCTION (Ohm-m) 2000

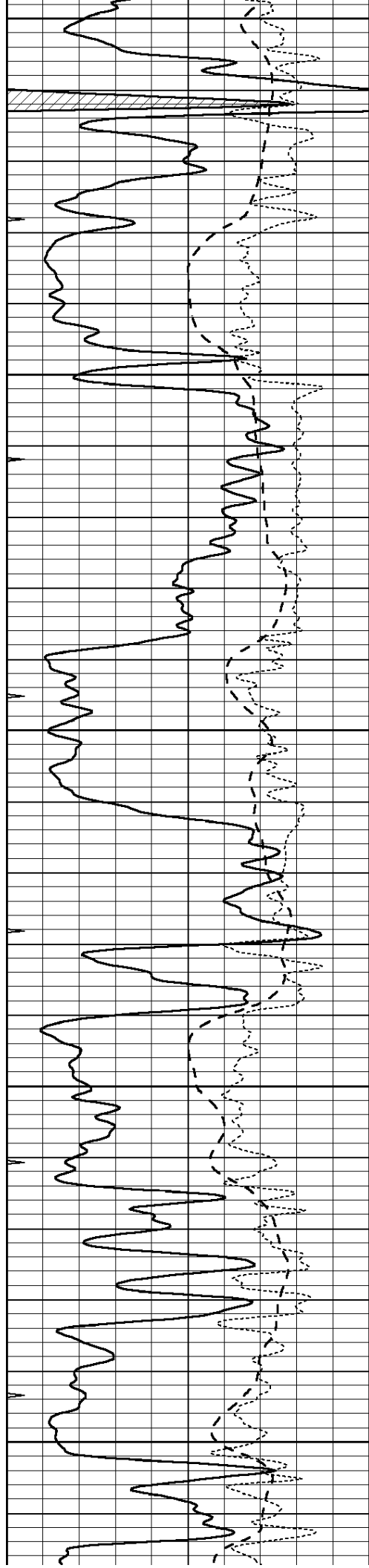


4100

4150

4200





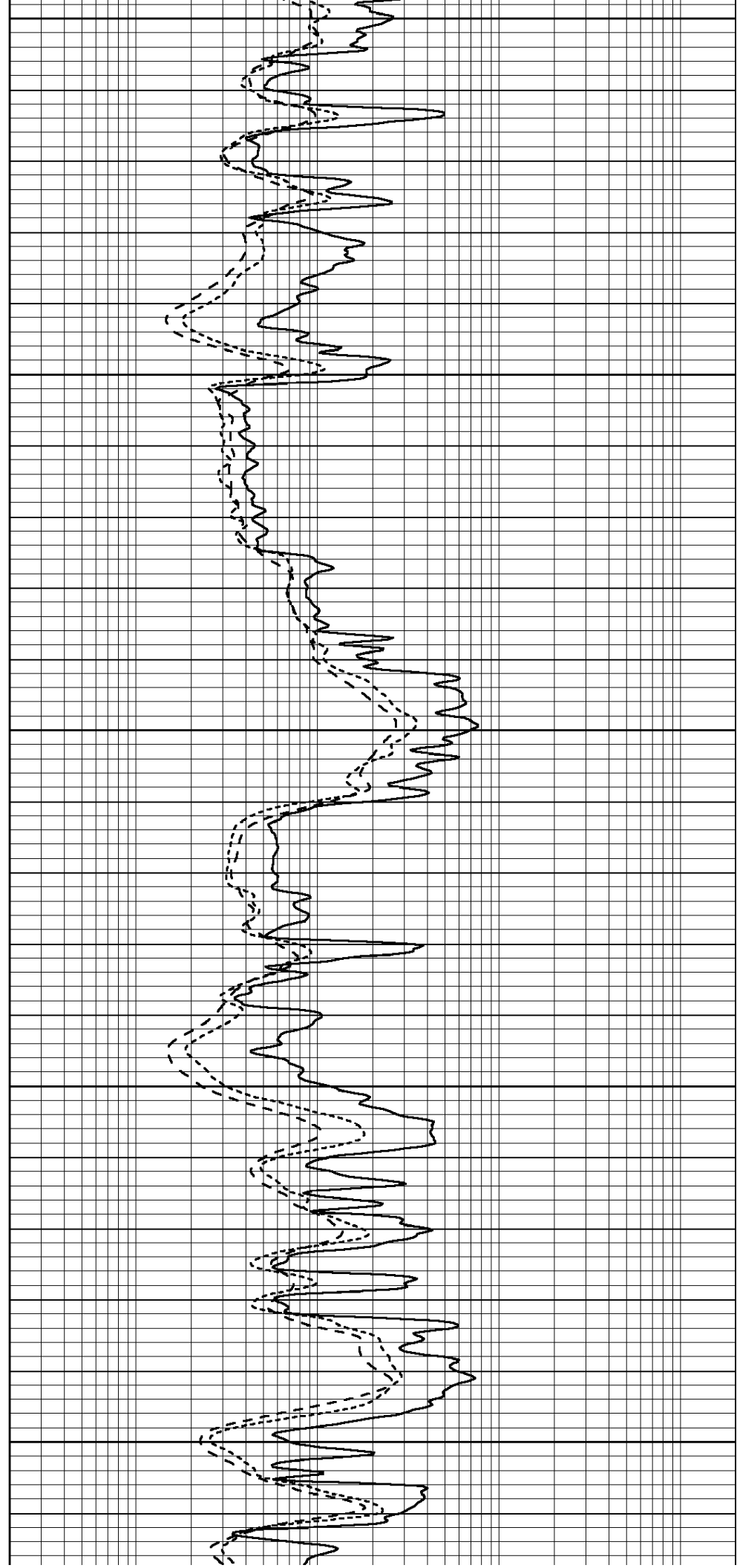
4250

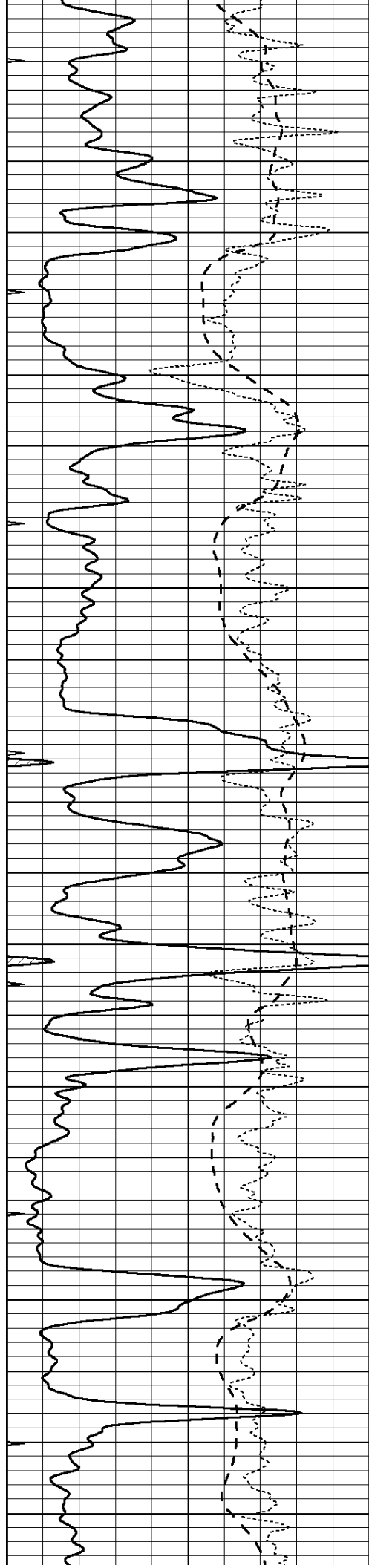
4300

4350

4400

4450



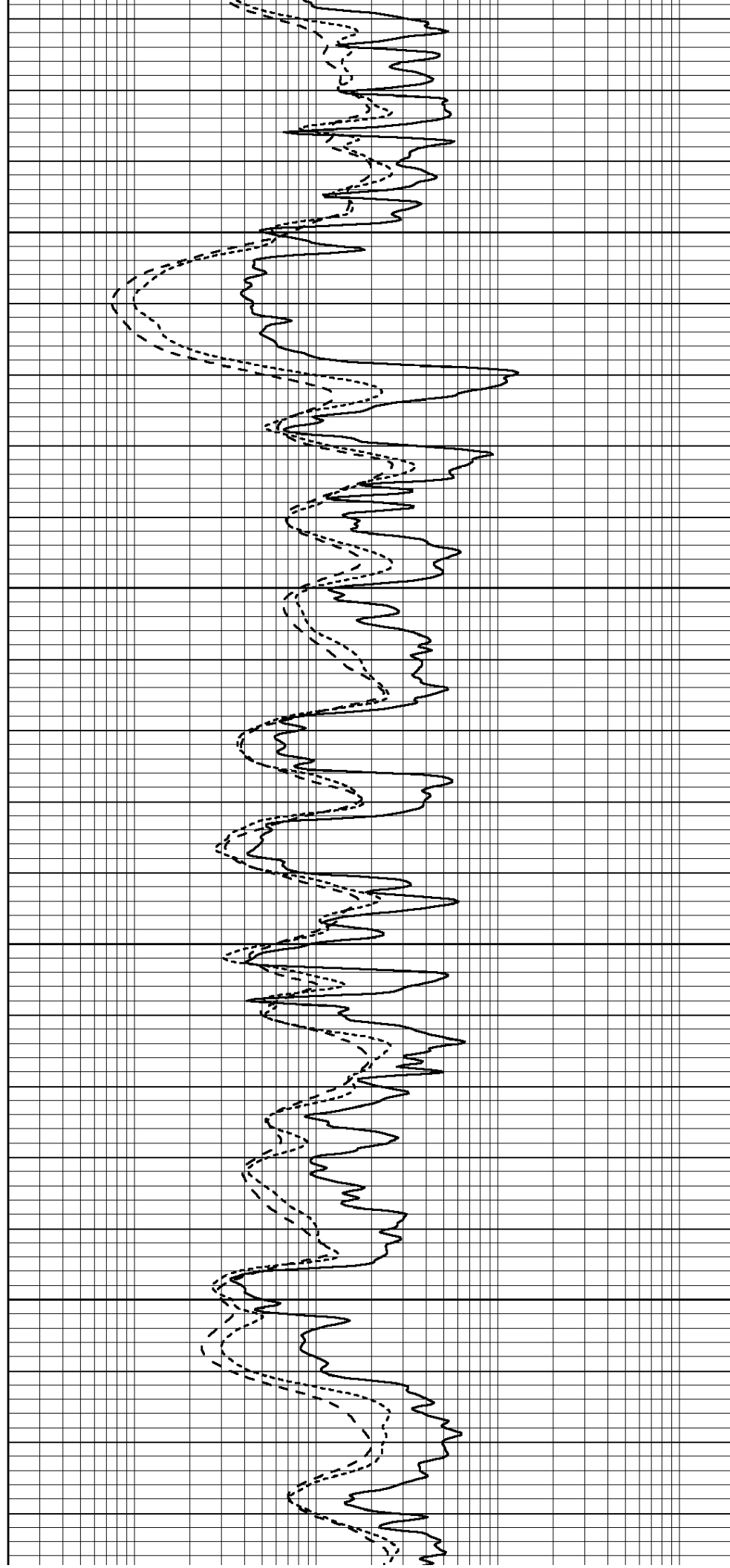


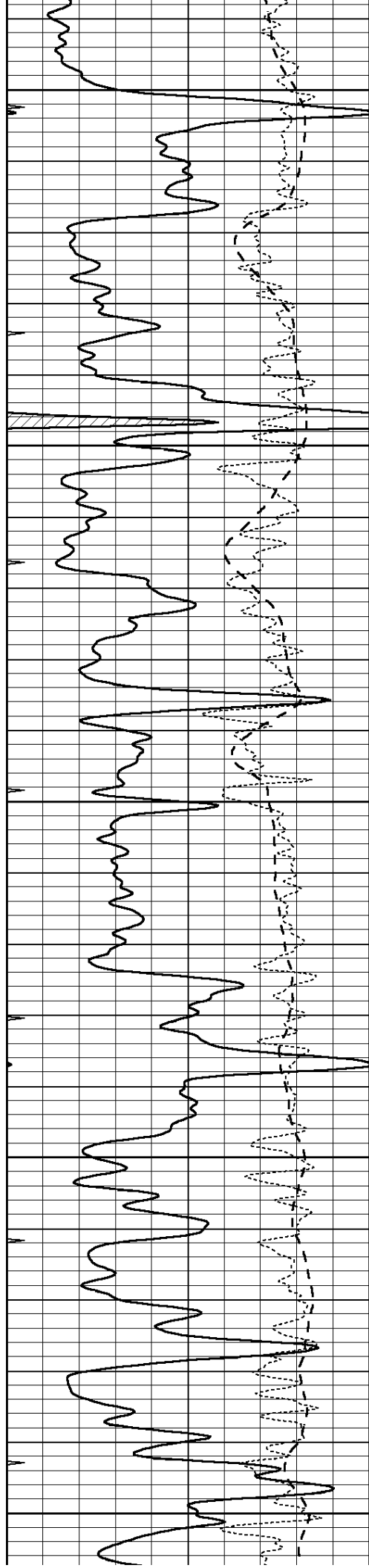
4500

4550

4600

4650





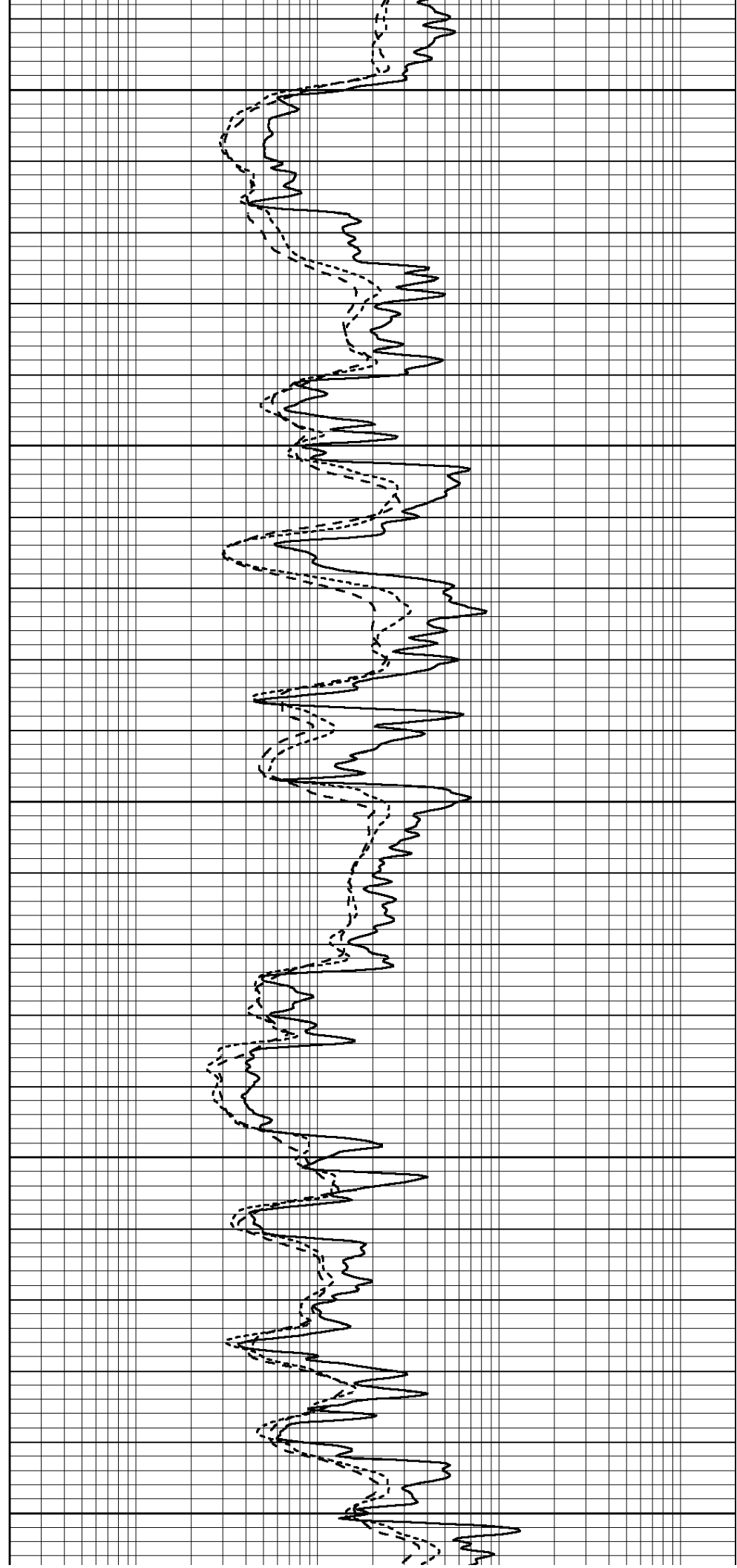
4700

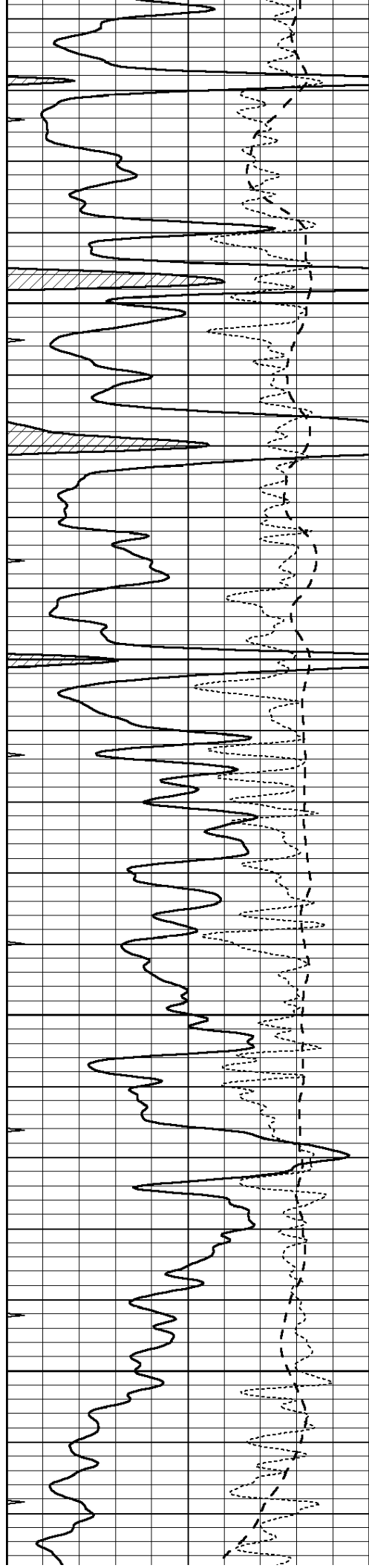
4750

4800

4850

4900



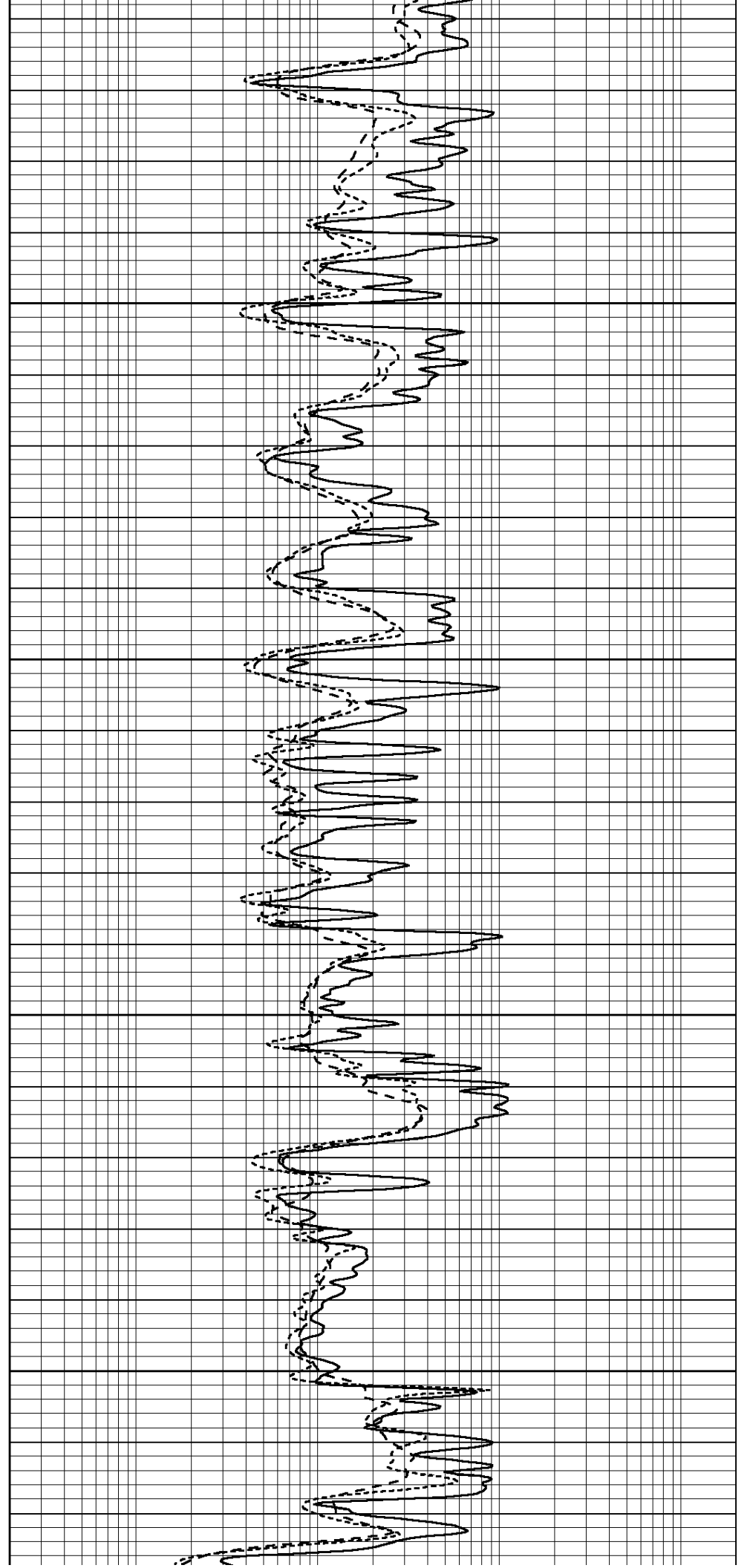


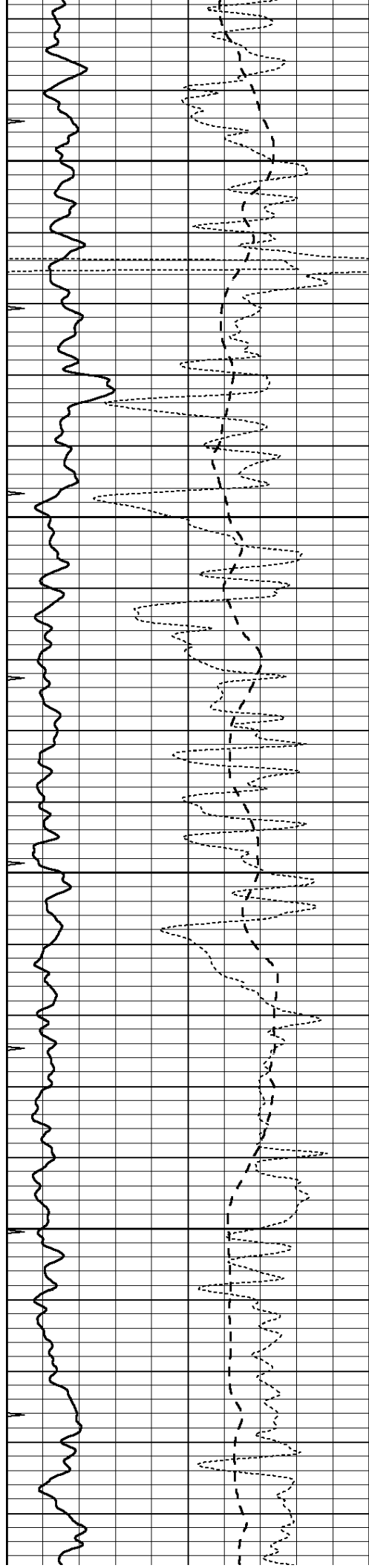
4950

5000

5050

5100



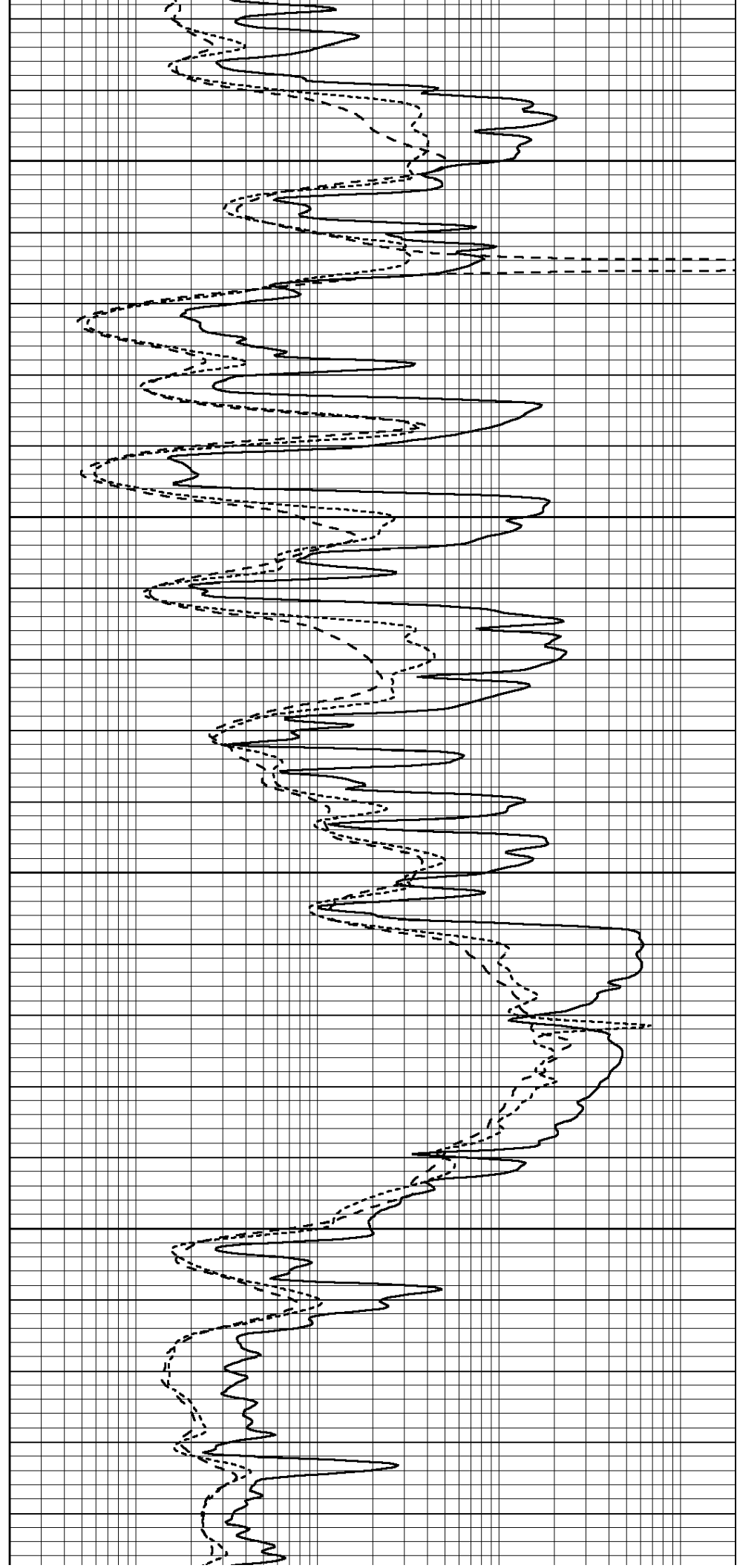


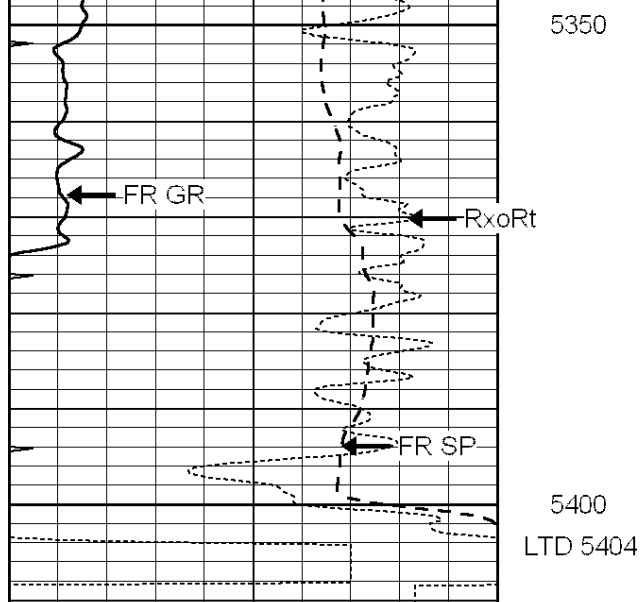
5150

5200

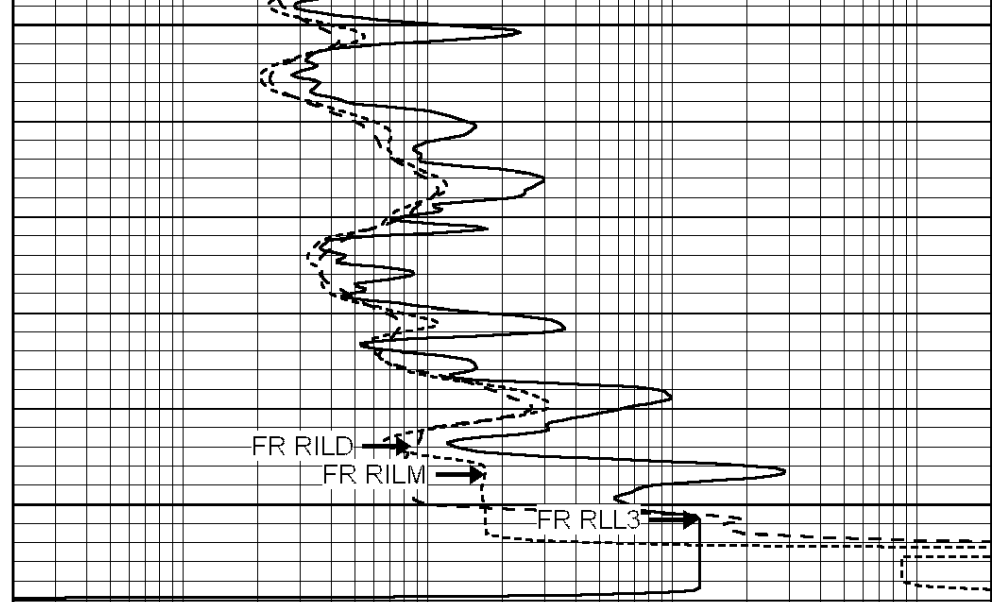
5250

5300





0	GAMMA RAY (GAPI)	150
-100	SP (mV)	100
-250	RxoRt	50
0	MINMK	20



0.2	RLL3 (Ohm-m)	2000
0.2	DEEP INDUCTION (Ohm-m)	2000
0.2	MEDIUM INDUCTION (Ohm-m)	2000



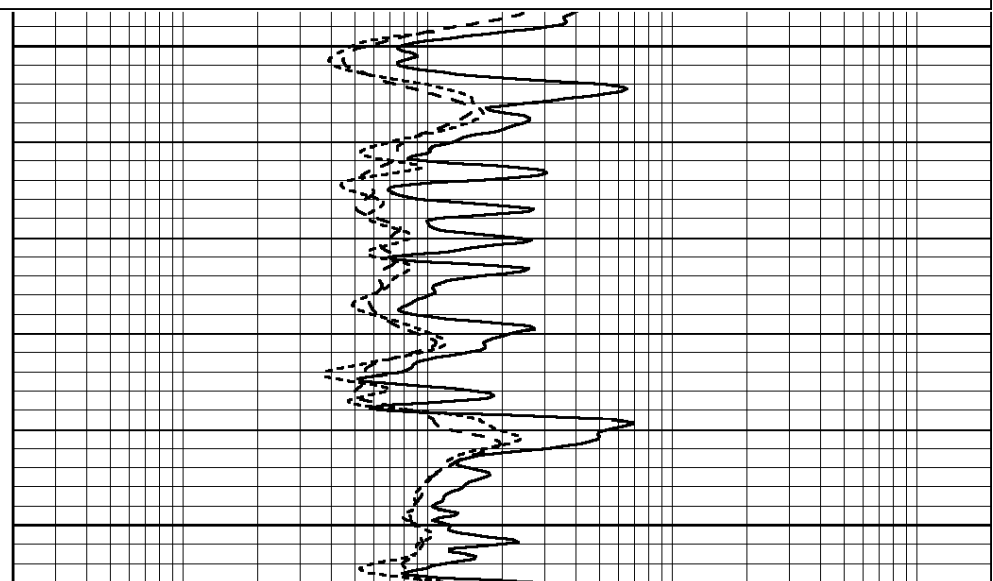
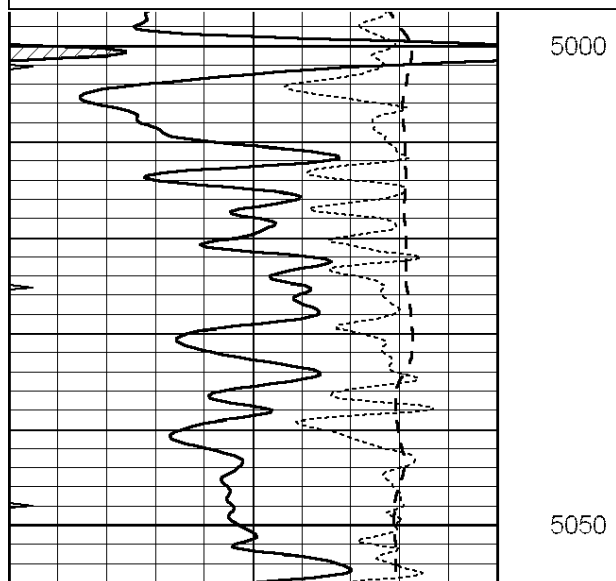
SUPERIOR
Hays,
Kansas

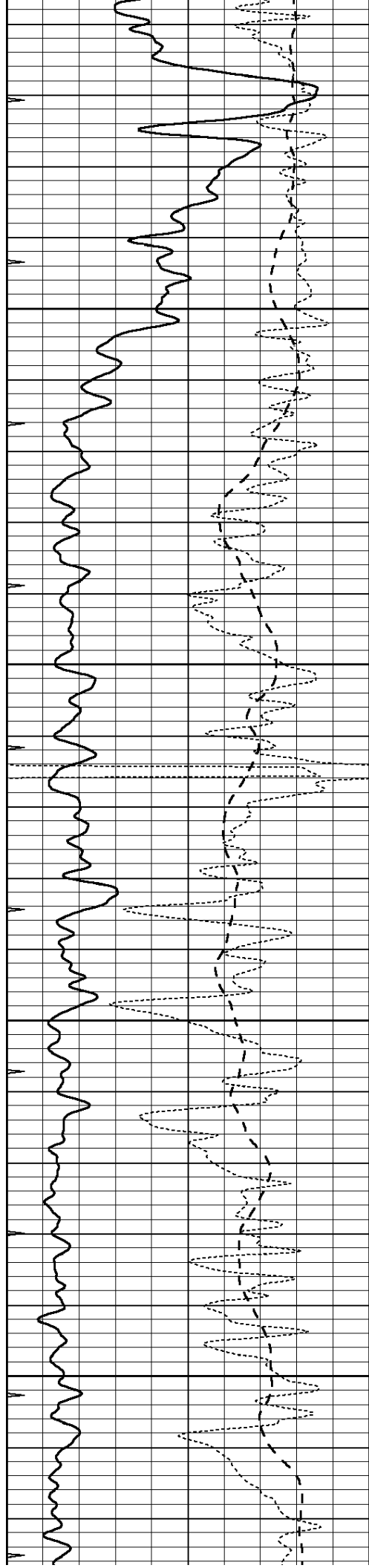
REPEAT SECTION

Database File: 005687pe.db
 Dataset Pathname: pass2.6
 Presentation Format: dil
 Dataset Creation: Fri Sep 17 09:26:33 2010 by Calc Open-Cased 090629
 Charted by: Depth in Feet scaled 1:240

0	GAMMA RAY (GAPI)	150
-100	SP (mV)	100
-250	RxoRt	50
0	MINMK	20

0.2	RLL3 (Ohm-m)	2000
0.2	DEEP INDUCTION (Ohm-m)	2000
0.2	MEDIUM INDUCTION (Ohm-m)	2000



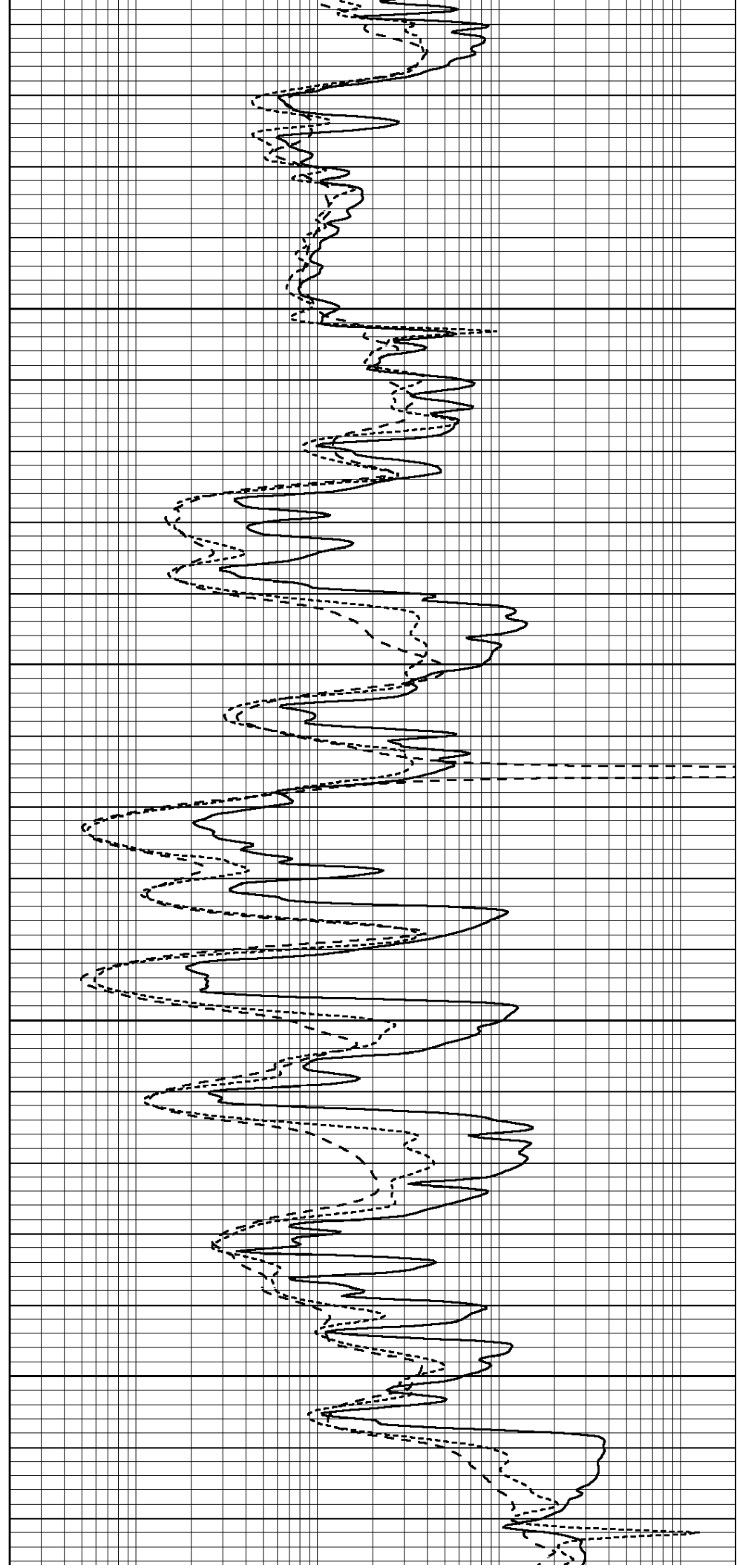


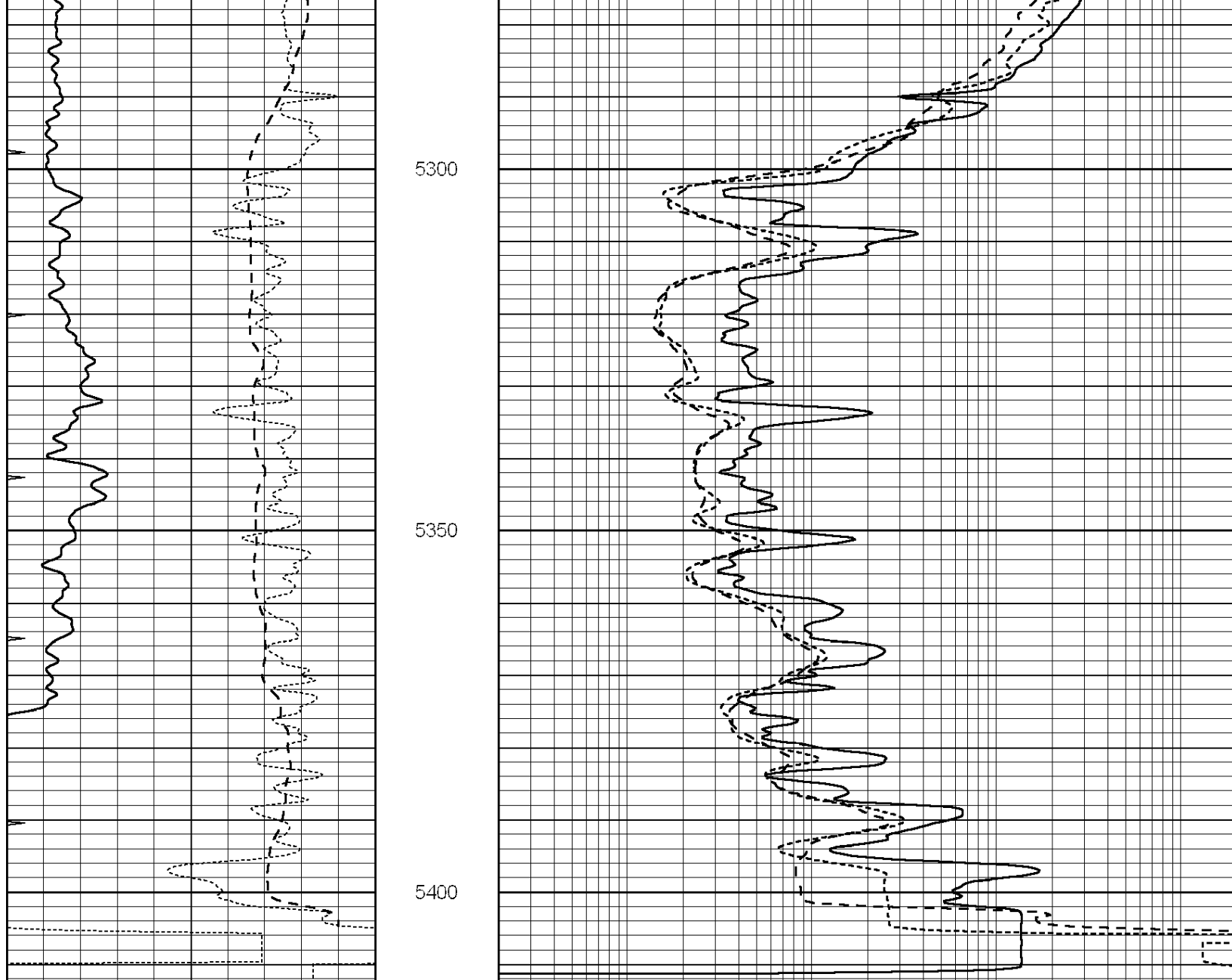
5100

5150

5200

5250





0	GAMMA RAY (GAPI)	150
-100	SP (mV)	100
-250	RxoRt	50
0	MINMK	20

0.2	RLL3 (Ohm-m)	2000
0.2	DEEP INDUCTION (Ohm-m)	2000
0.2	MEDIUM INDUCTION (Ohm-m)	2000

Calibration Report

Database File: 005687pe.db
 Dataset Pathname: pass3.5
 Dataset Creation: Fri Sep 17 10:59:43 2010

Dual Induction Calibration Report

Serial-Model: DIL5-GEAR
 Performed: Thu Sep 16 07:14:17 2010

Loop:	Readings				References		Results	
	Air	Loop			Air	Loop	m	b
Deep	0.004	0.654	V	0.000	400.000	mmho/m	540.000	-8.000
Medium	-0.005	0.737	V	0.000	462.500	mmho/m	520.000	-10.000

Internal:	Zero	Cal		Zero	Cal		m	b
Deep	0.006	0.655	V	0.000	400.000	mmho/m	615.668	-3.483
Medium	0.010	0.747	V	0.000	462.500	mmho/m	627.607	-6.064

Litho Density Calibration Report
Serial: 002 Model: PRB
Performed Tue Jul 03 11:12:28 2007

Litho Density Calibration

	Background	Magnesium	Aluminum	Sandstone	
Window 1	1059.5	9172.0	2859.6	10210.6	cps
Window 2	976.0	7793.2	2486.1	8515.6	cps
Window 3	689.8	2930.5	1159.0	3096.2	cps
Window 4	231.9	237.2	231.1	234.0	cps
Long Space	0.0	6817.1	1510.1	7539.6	cps
Short Space	1.6	1758.1	1188.6	1898.8	cps
Rho		1.7100	2.5960	1.3800	g/cc
Pe			2.5700	1.5500	
Rib Angle	: 45.4	Rib Slope	: 1.015	Density/Spine Ratio	: 0.569
Spine Angle	: 75.4	Spine Slope	: 3.850	Spine Intercept	: -19.9

Caliper	Readings	Reference	
Low Ref	2.8	8.9	
High Ref	4.8	14.0	
	Gain: 2.5		Offset: 2.1

Compensated Neutron Calibration Report

Serial Number: NEU_1I
Tool Model: G

CALIBRATION

Detector	Readings	Target	Normalization
Short Space	1.00 cps	1.00 cps	1.0000
Long Space	1.00 cps	1.00 cps	1.0000

Gamma Ray Calibration Report

Serial Number: GR5
Tool Model: OPEN
Performed: Thu Sep 16 07:13:10 2010

Calibrator Value: 1.0 GAPI

Background Reading: 0.0 cps
Calibrator Reading: 1.0 cps

Sensitivity: 0.6500 GAPI/cps