



# Dual Induction Log

DIGITAL LOG (785) 625-3858

API No.	15-109-20941-00-00	
Company	Russell Oil Inc.	
Well	McDaniel "D" #1-24	
Field	Wildcat	
County	Logan	State Kansas
Location	S2 NW/NW SE 2240' FSL & 2310' FEL	
Sec: 24	Twp: 15S	Rge: 34W
Other Services	CNL / CDL MEL	

Permanent Datum	Ground Level	Elevation 2977
Log Measured From	Kelly Bushing	11 Ft. Above Perm. Datum
Drilling Measured From	Kelly Bushing	K.B. 2988 D.F. 2977 G.L. 2977
Date	10/31/2010	
Run Number	One	
Depth Driller	4780	
Depth Logger	4792	
Bottom Logged Interval	4791	
Top Log Interval	200	
Casing Driller	8.625 @ 225	
Casing Logger	225	
Bit Size	7.875	
Type Fluid in Hole	Chemical	
Salinity, ppm CL	5700	
Density / Viscosity	9.4	59
pH / Fluid Loss	9.5	9.2
Source of Sample	Flowline	
Rm @ Meas. Temp	.32 @ 64	
Rmf @ Meas. Temp	.24 @ 64	
Rmc @ Meas. Temp	.43 @ .64	
Source of Rmf / Rmc	Charts	
Rm @ BHT	.16 @ 126	
Operating Rig Time	4 Hours	
Max Rec. Temp. F	126	
Equipment Number	17	
Location	Hays	
Recorded By	R. Barnhart	
Witnessed By	Steven D. Angle	Kevin J. Bailey

<<< Fold Here >>>

All interpretations are opinions based on inferences from electrical or other measurements and we cannot and do not guarantee the accuracy or correctness of any interpretation, and we shall not, except in the case of gross or willful negligence on our part, be liable or responsible for any loss, costs, damages, or expenses incurred or sustained by anyone resulting from any interpretation made by any of our officers, agents or employees. These interpretations are also subject to our general terms and conditions set out in our current Price Schedule.

### Comments

Thank you for using Log-Tech, Inc.  
 (785) 625-3858

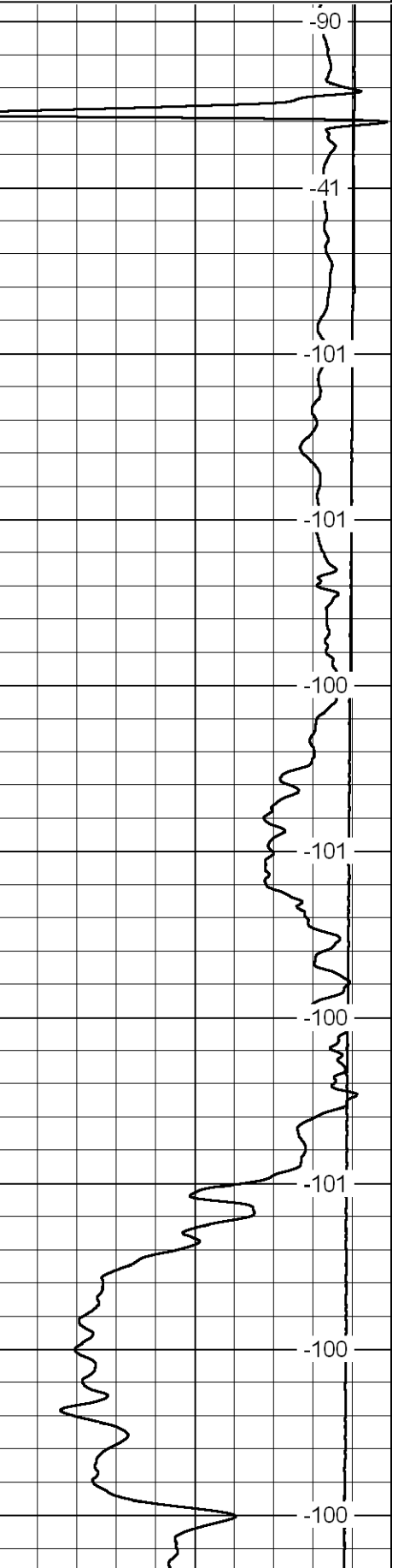
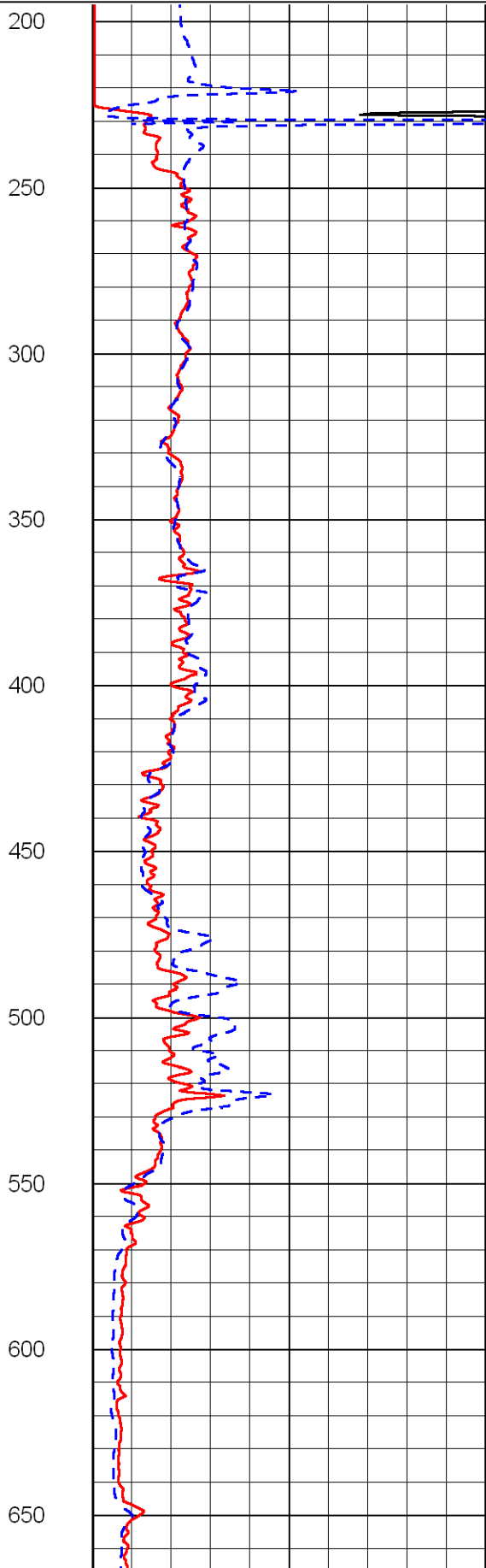
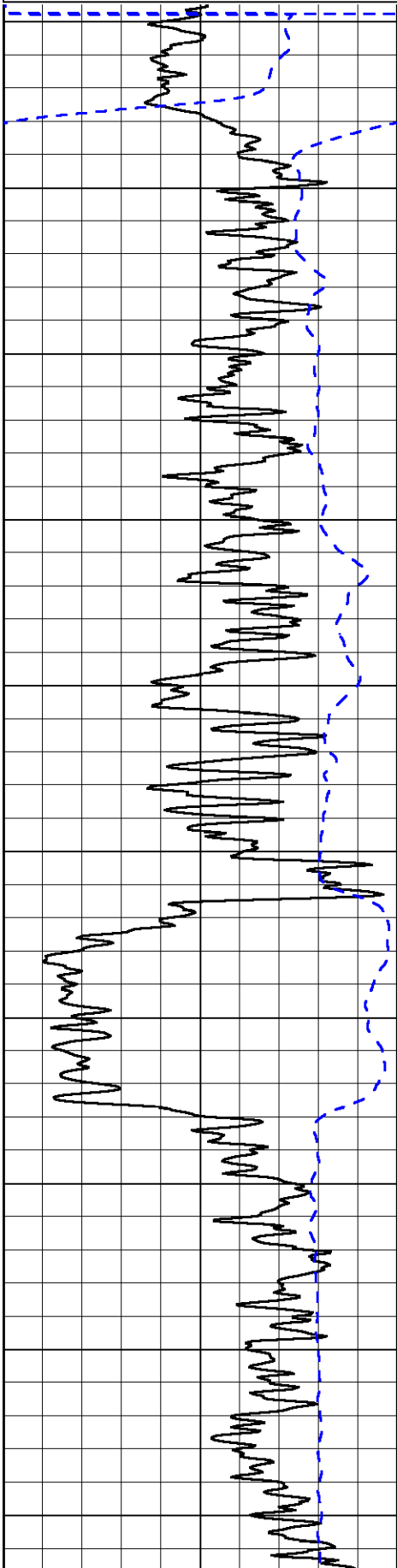
Hwy 83 & 95:  
 NW 2, W 7, N 6, W into

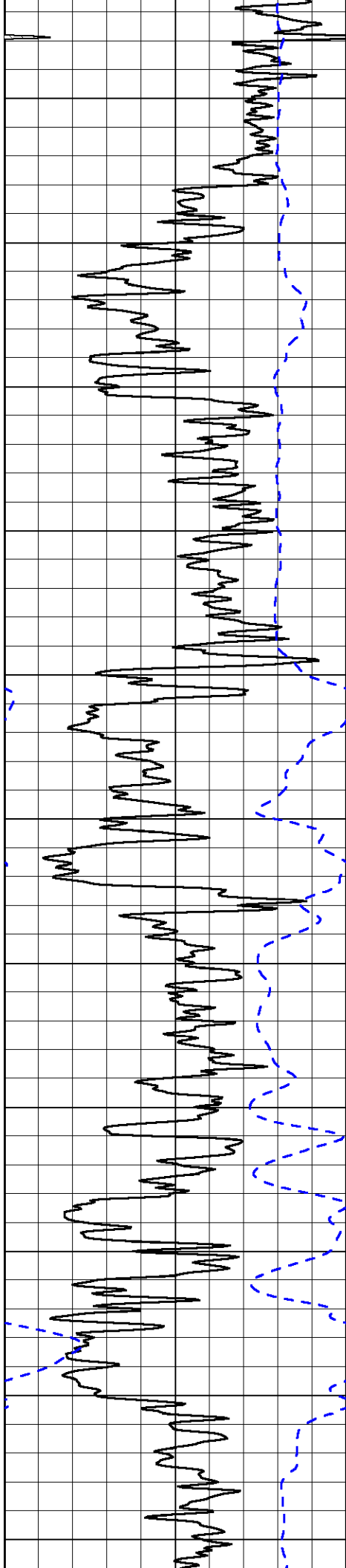
Database File: russell\_mcdaniel1-24hd.db  
 Dataset Pathname: dil/@00000e60  
 Presentation Format: dil2in  
 Dataset Creation: Sun Oct 31 15:43:15 2010  
 Charted by: Depth in Feet scaled 1:600

0 Gamma Ray 150  
-200 SP 0

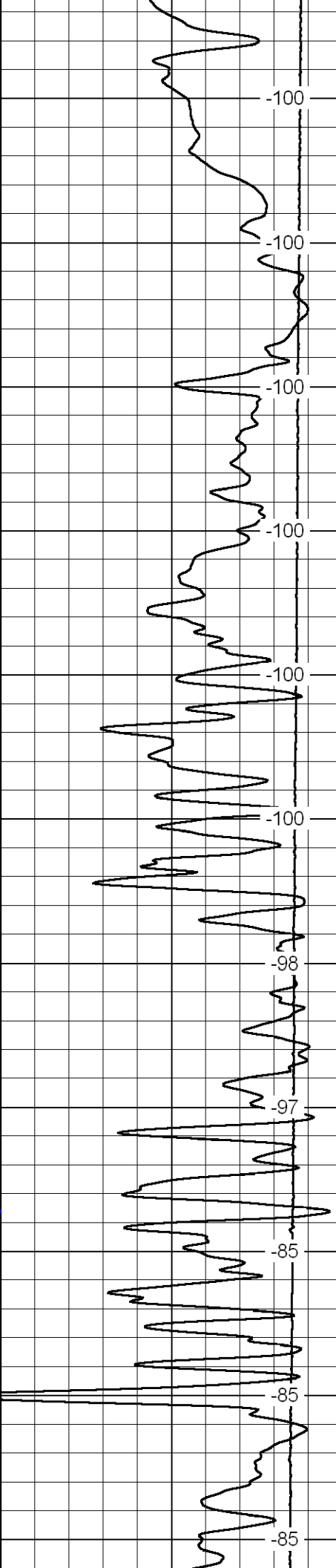
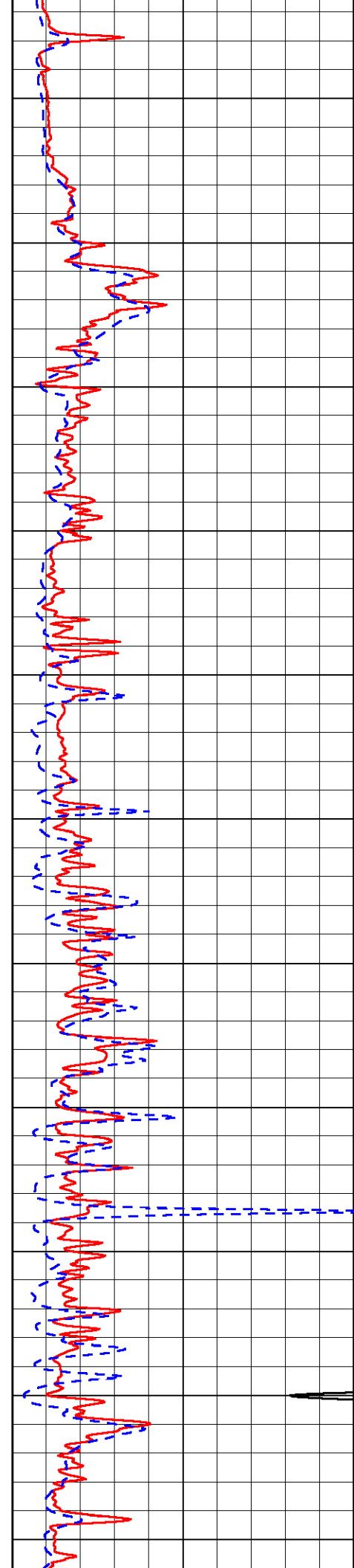
0 Shallow Resistivity 50  
0 Deep Resistivity 50  
1000 Conductivity 0  
15000 Line Tension 0  
50 Shallow Resistivity 500  
50 Deep Resistivity 500

LSPD

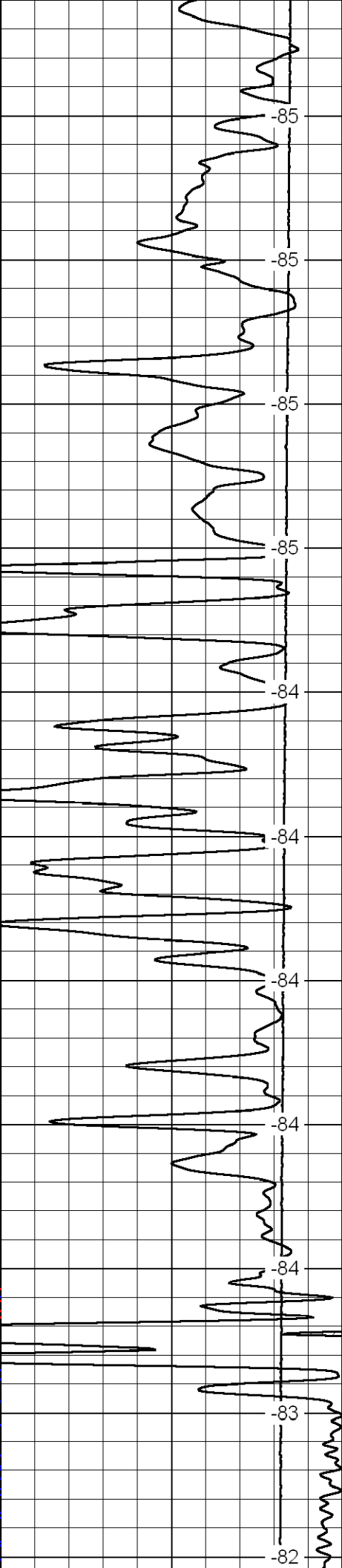
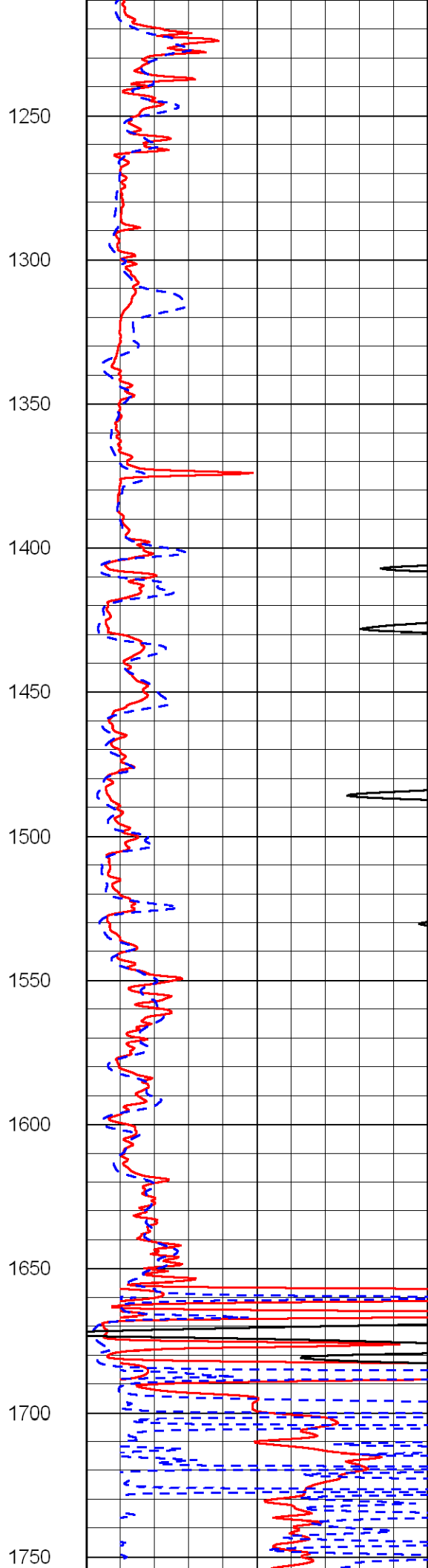
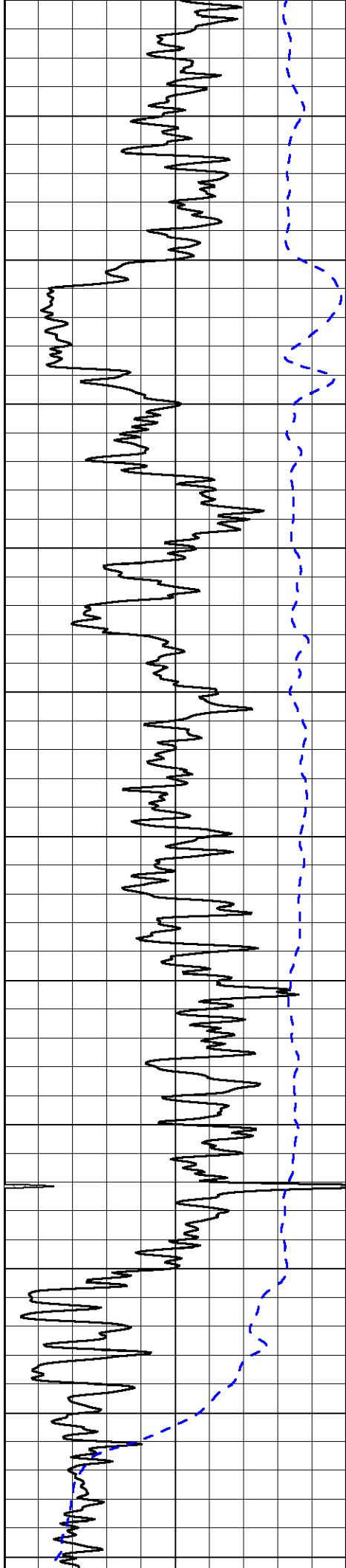


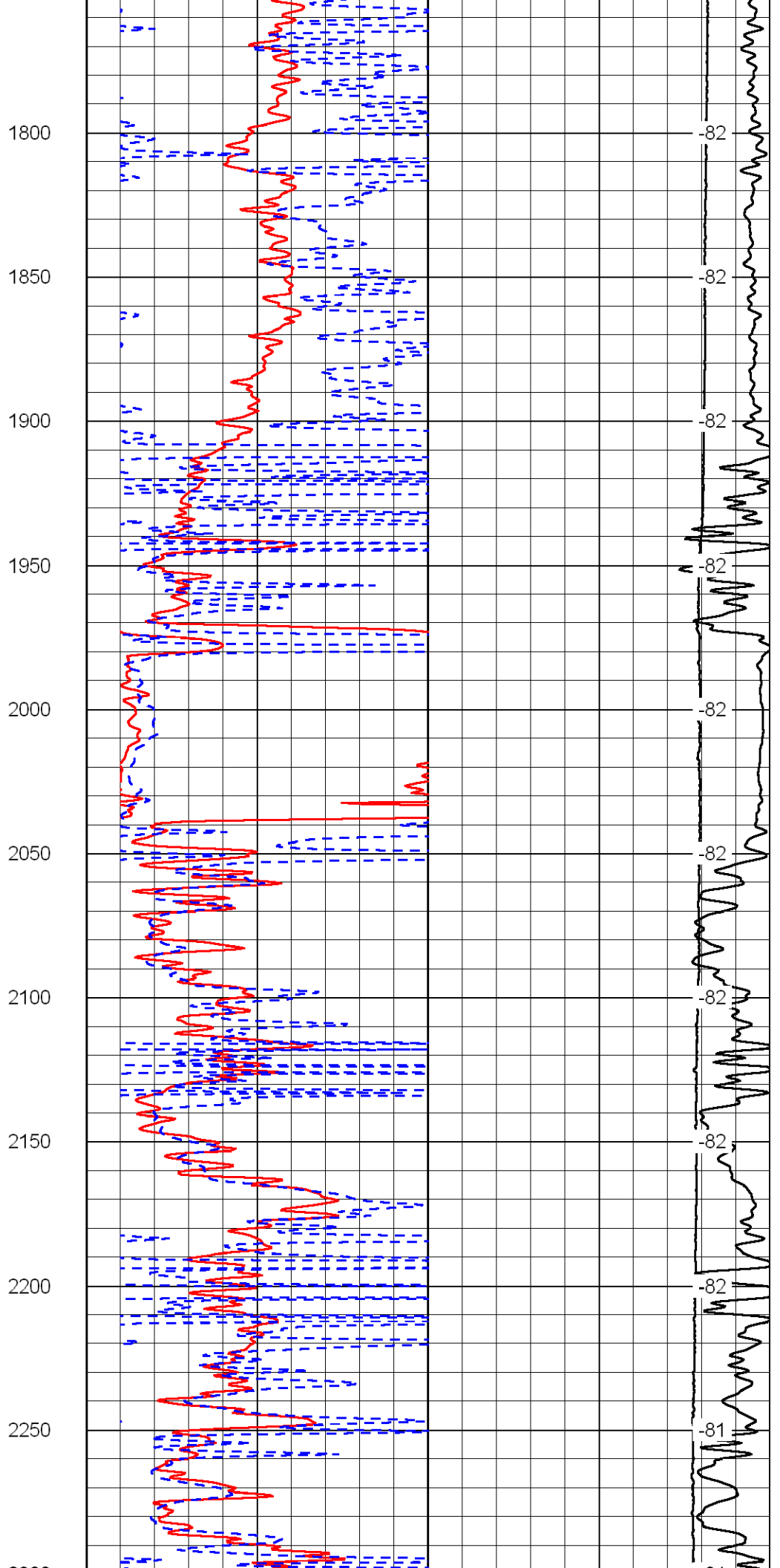
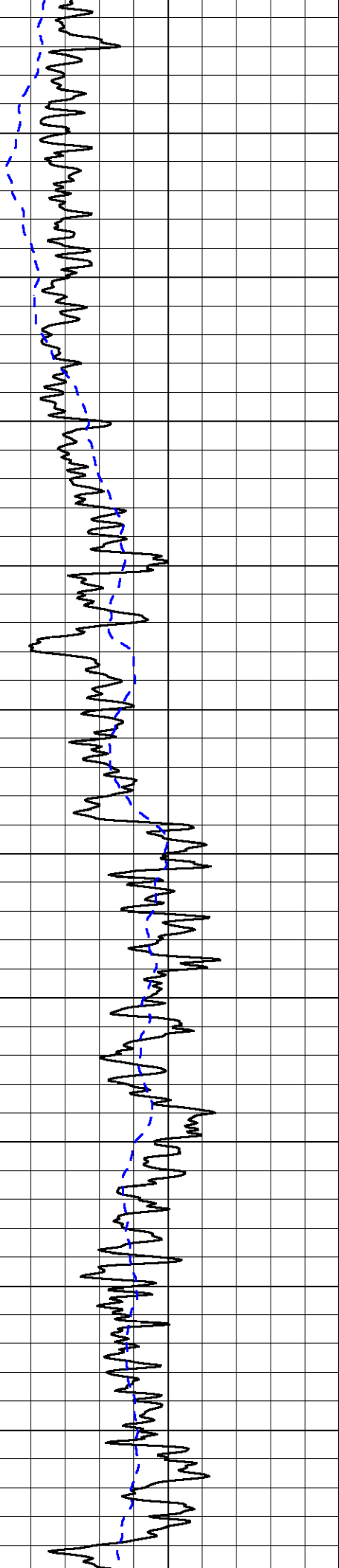


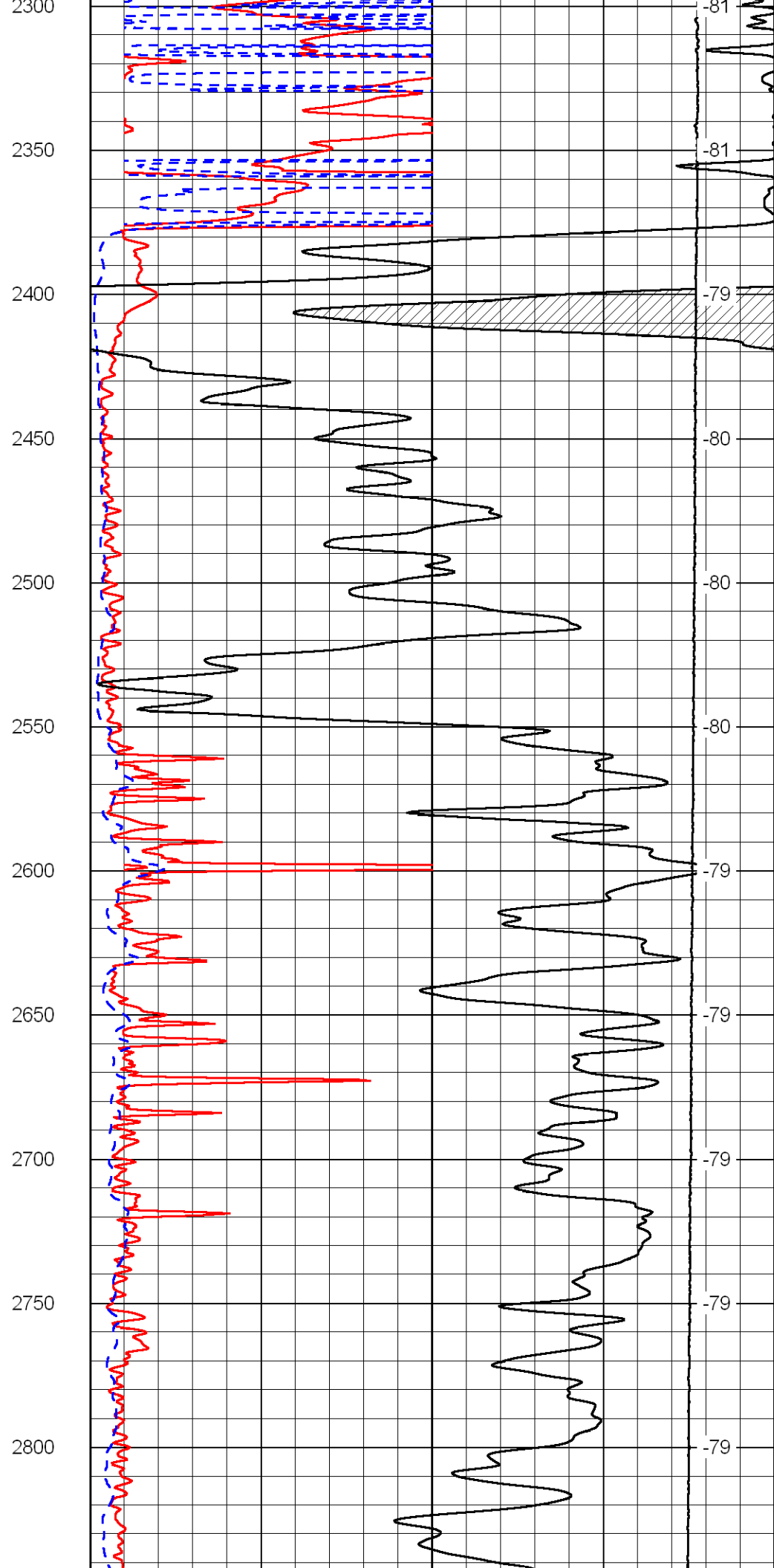
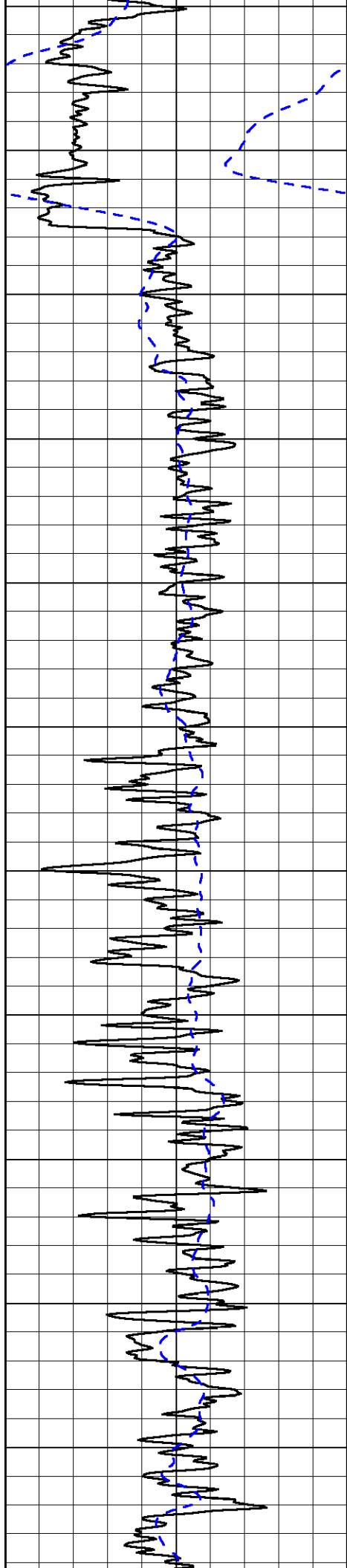
700  
750  
800  
850  
900  
950  
1000  
1050  
1100  
1150  
1200

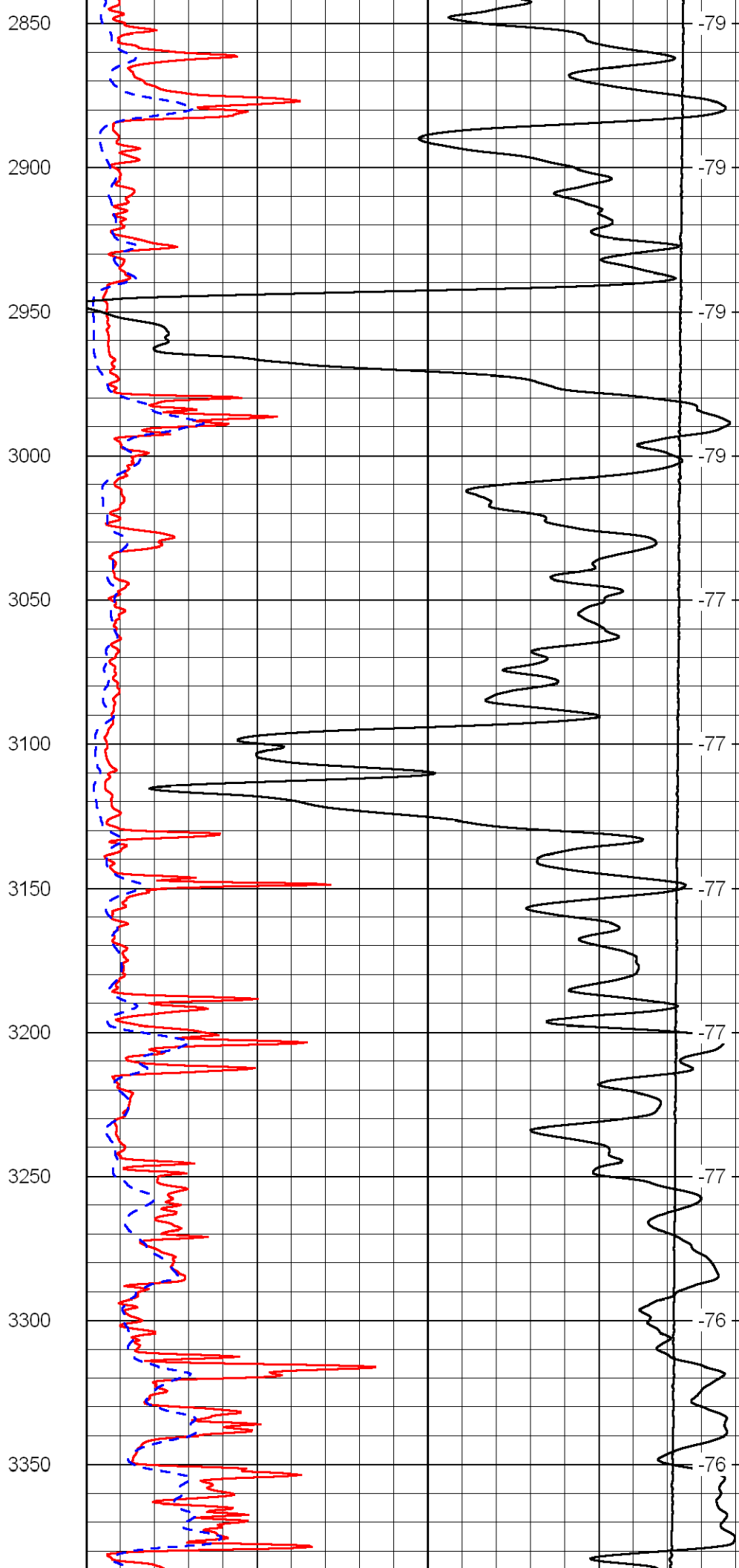
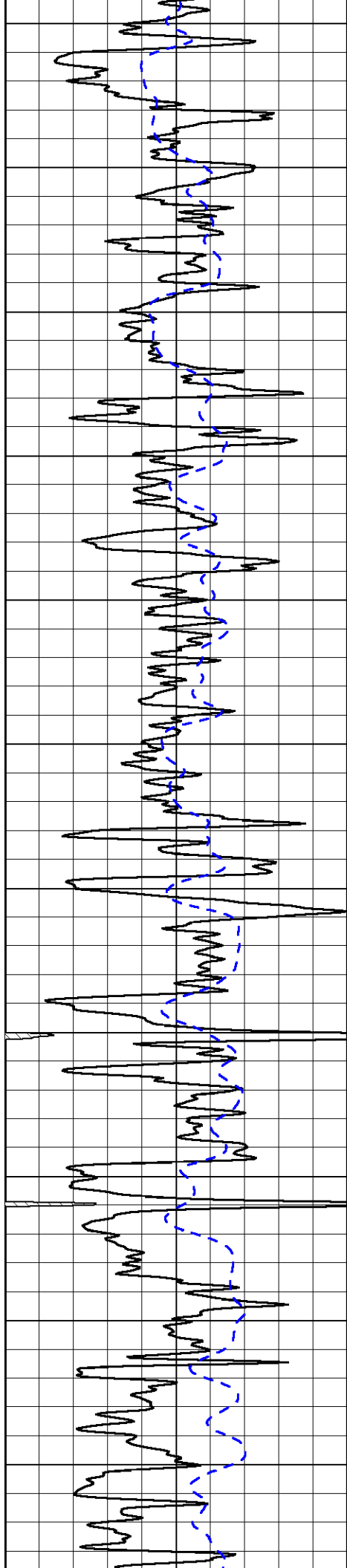


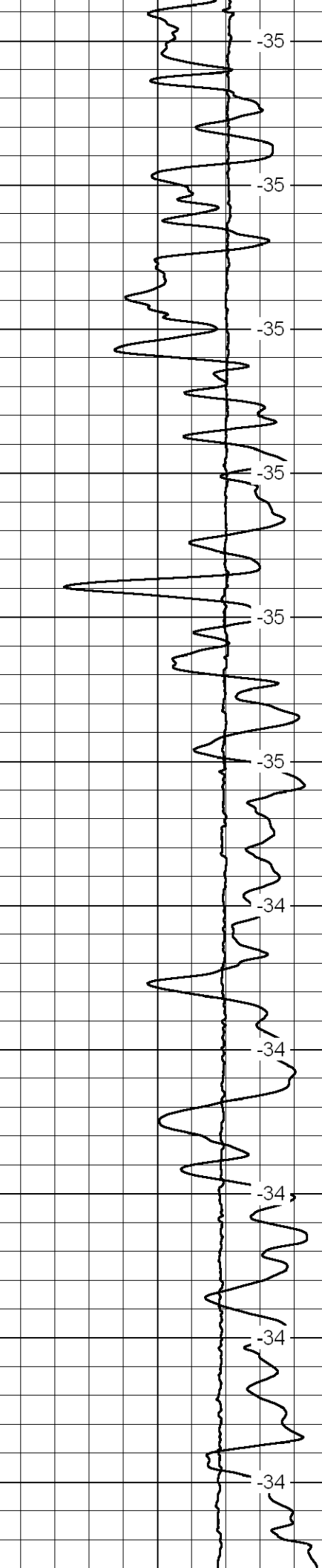
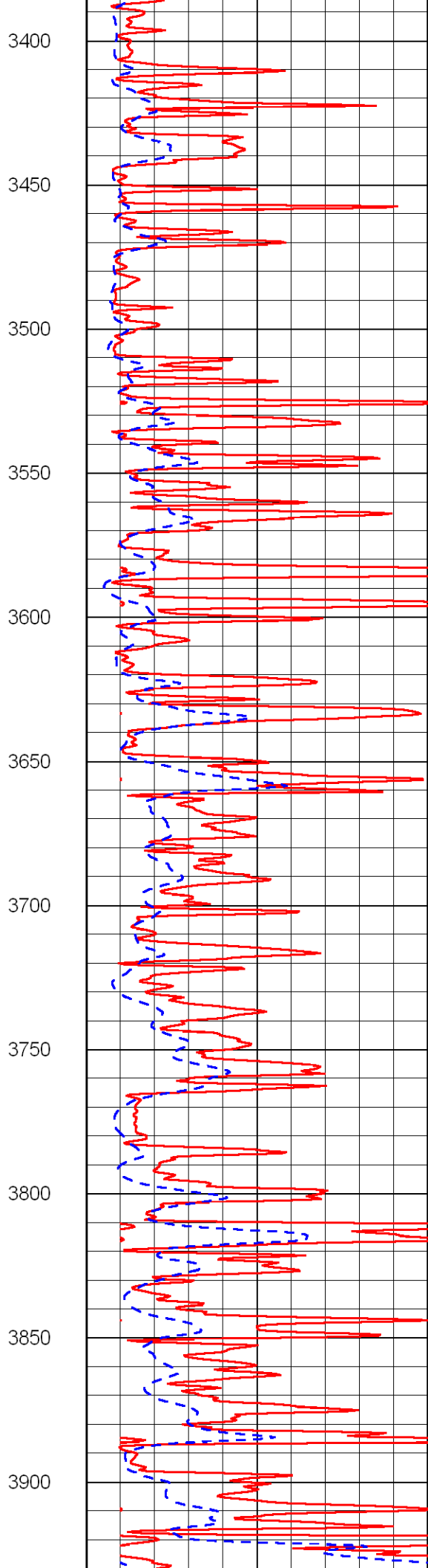
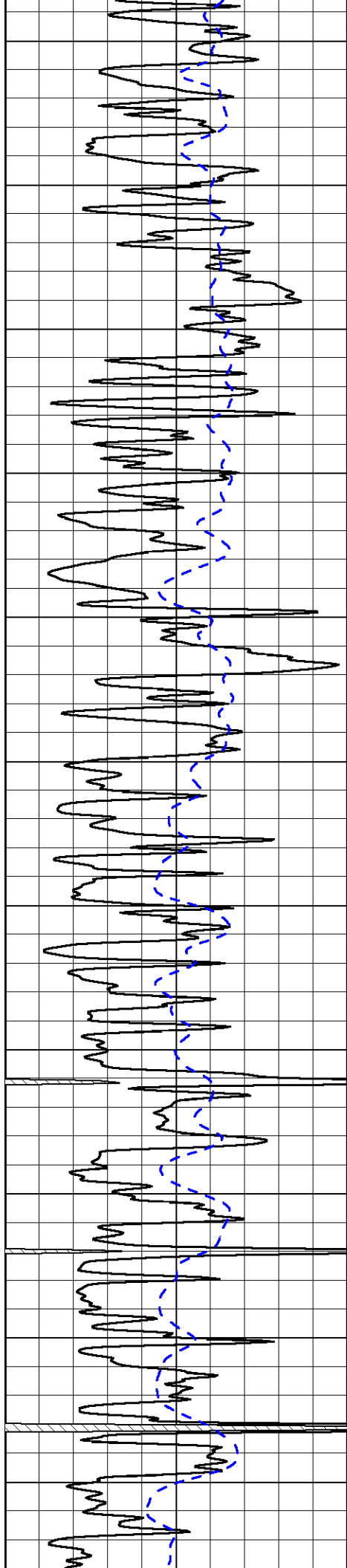
-100  
-100  
-100  
-100  
-100  
-100  
-98  
-97  
-85  
-85

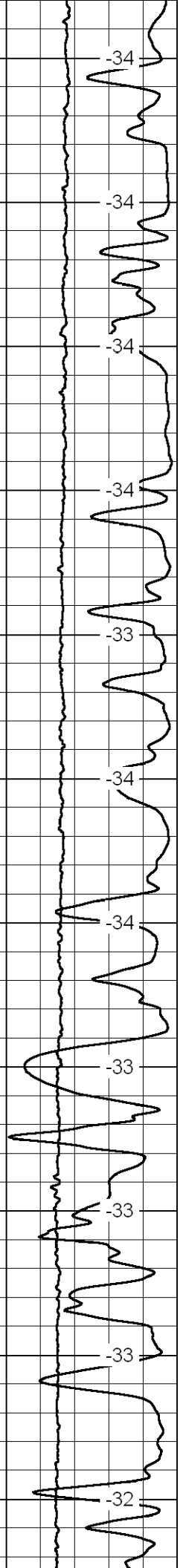
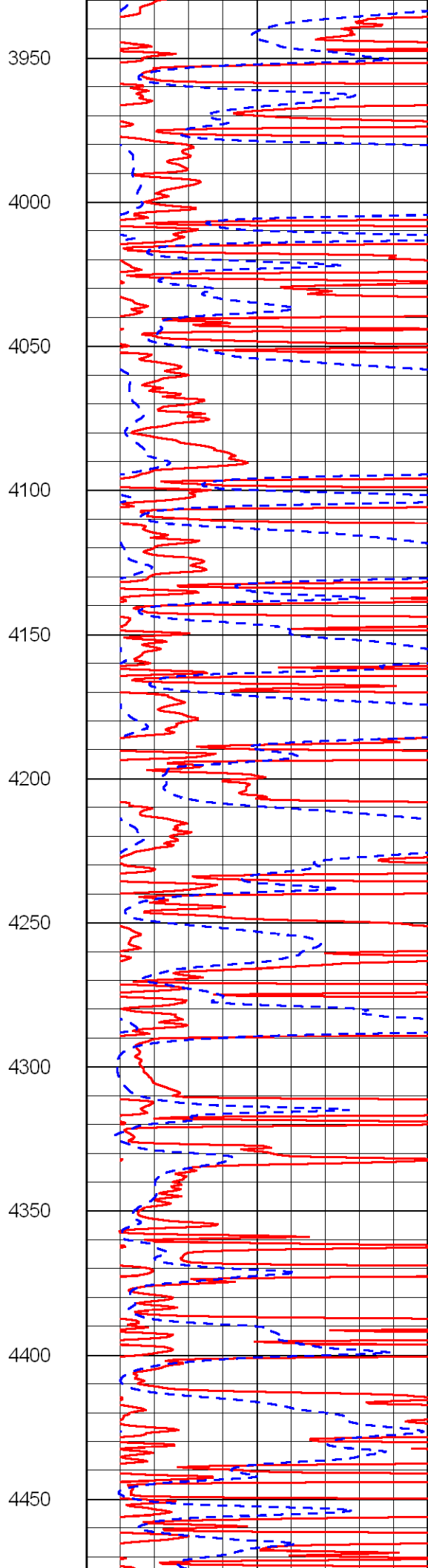
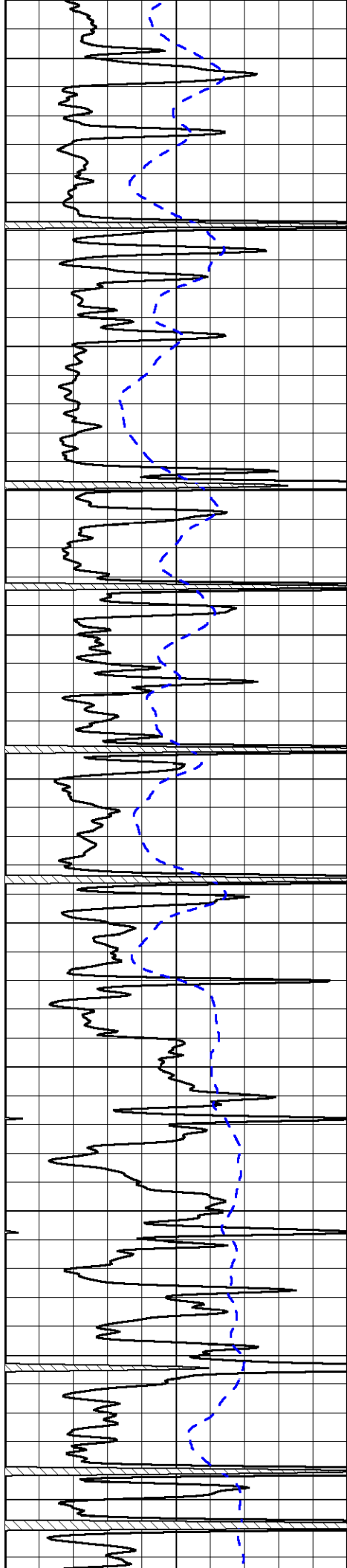


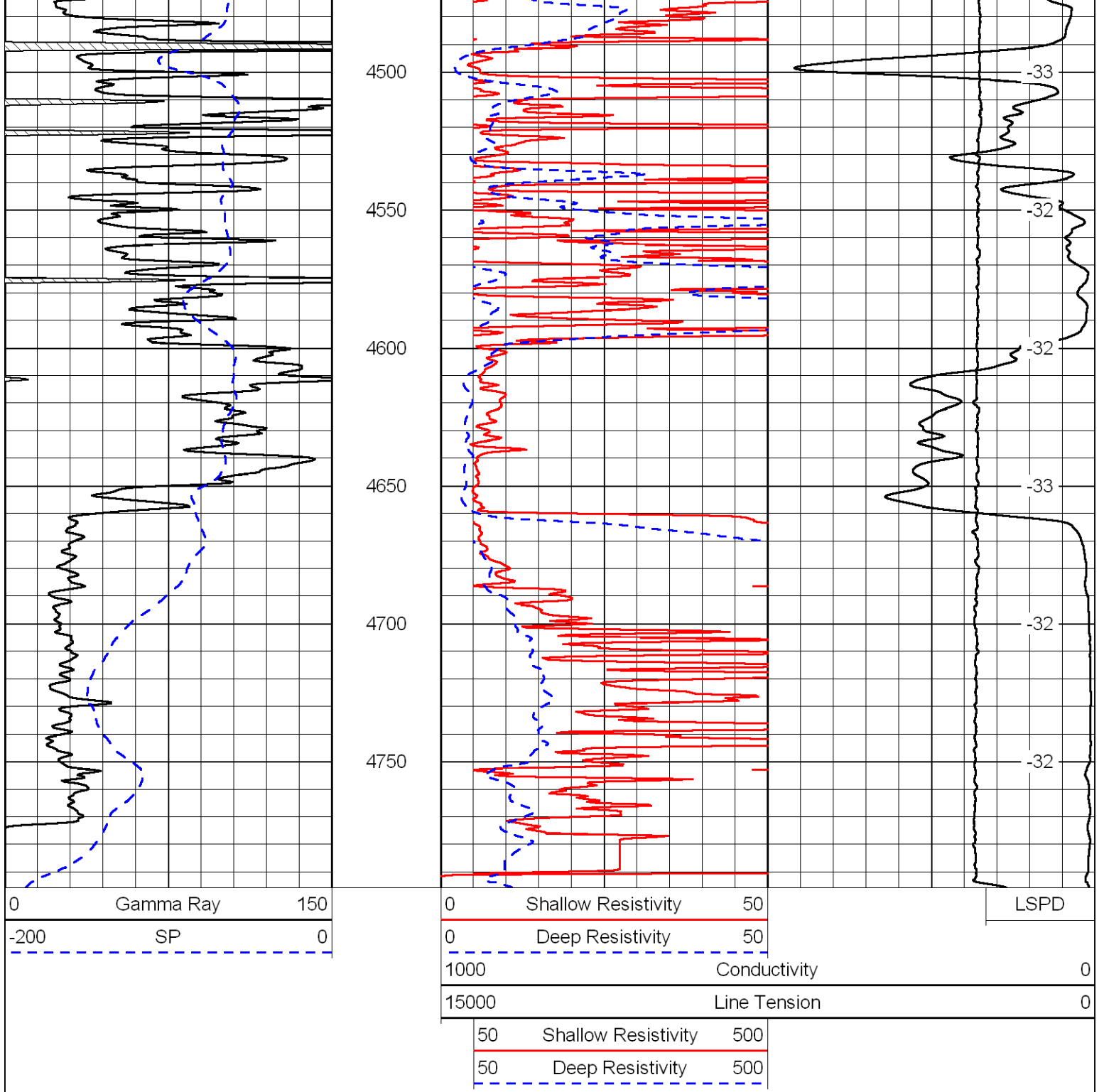




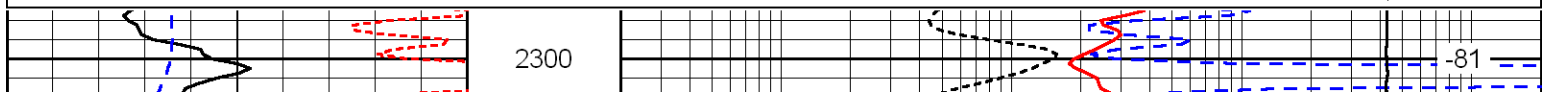
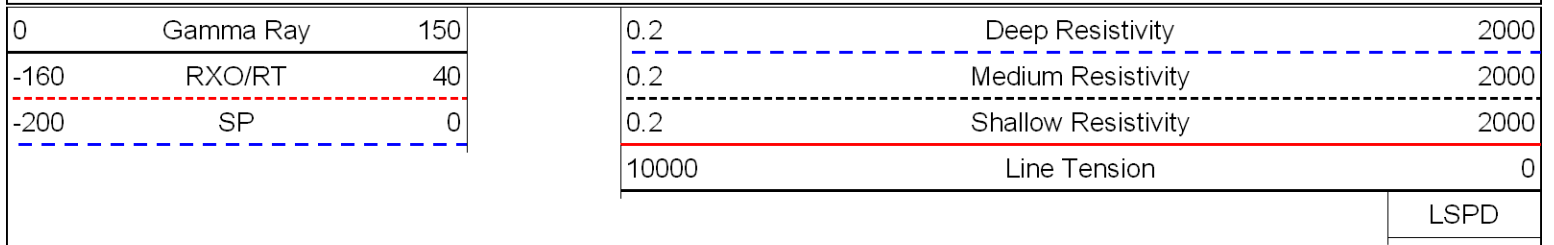


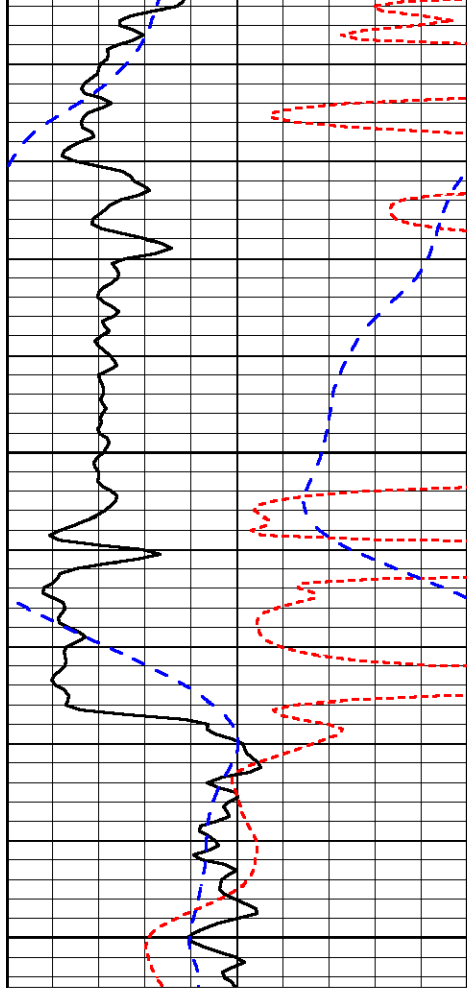






Database File: russell\_mcdaniel1-24hd.db  
 Dataset Pathname: dil/@00000e60  
 Presentation Format: dil  
 Dataset Creation: Sun Oct 31 15:43:15 2010  
 Charted by: Depth in Feet scaled 1:240

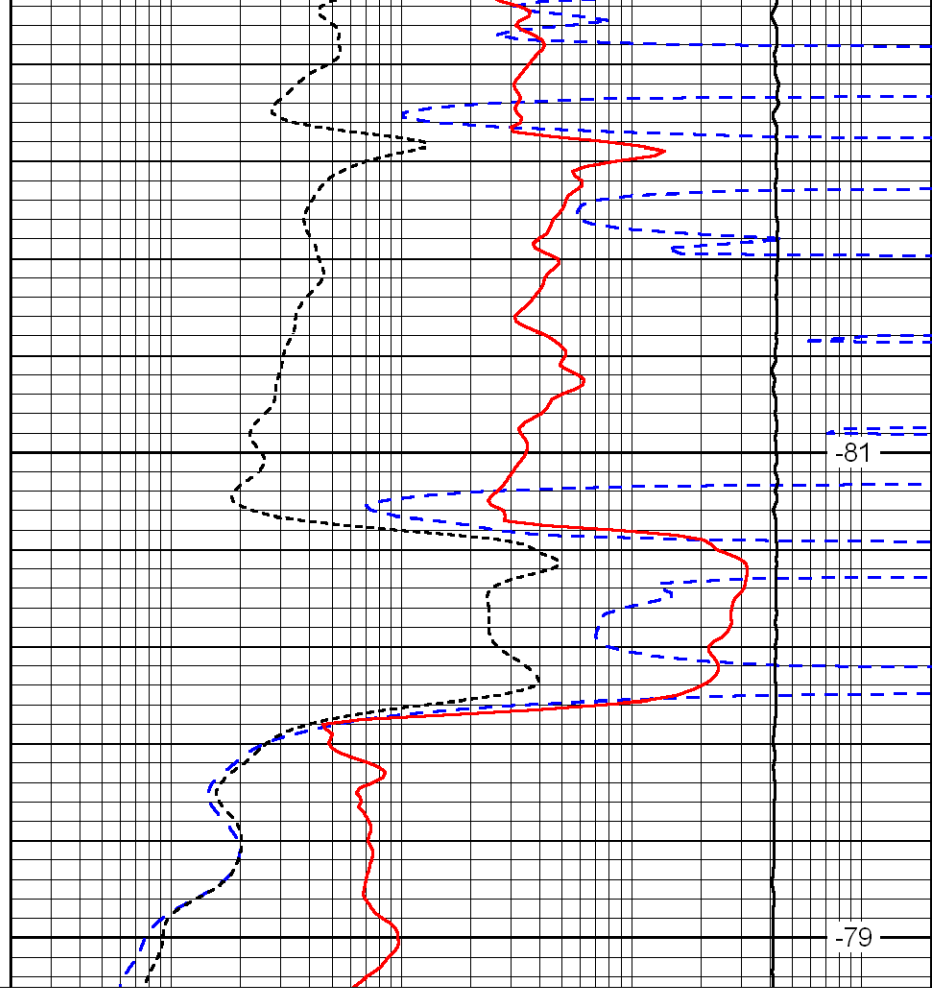




0	Gamma Ray	150
-160	RXO/RT	40
-200	SP	0

2350

2400



0.2	Deep Resistivity	2000
0.2	Medium Resistivity	2000
0.2	Shallow Resistivity	2000
10000	Line Tension	0

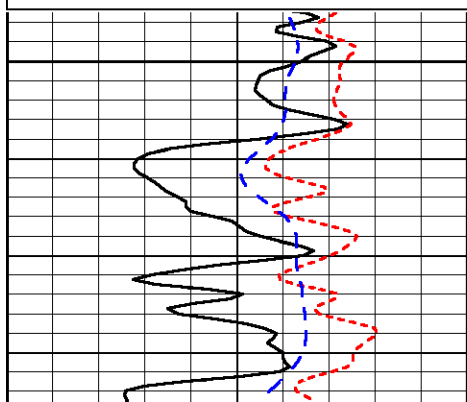
LSPD

Database File: russell\_mcdaniel1-24hd.db  
 Dataset Pathname: dil/@00000e60  
 Presentation Format: dil  
 Dataset Creation: Sun Oct 31 15:43:15 2010  
 Charted by: Depth in Feet scaled 1:240

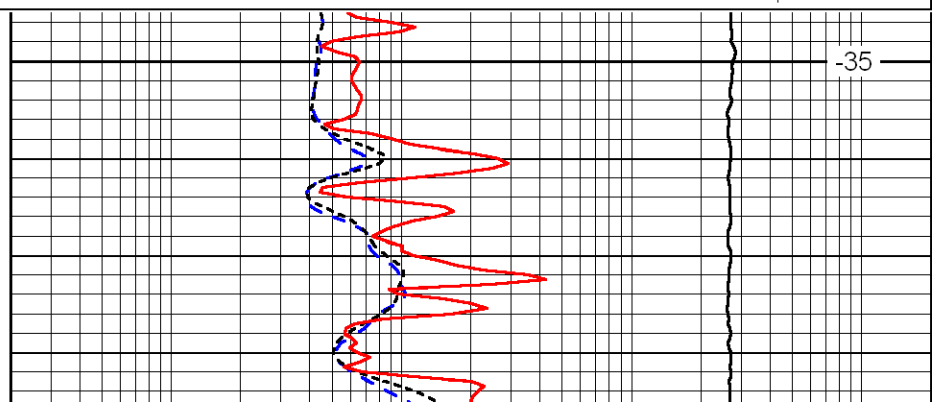
0	Gamma Ray	150
-160	RXO/RT	40
-200	SP	0

0.2	Deep Resistivity	2000
0.2	Medium Resistivity	2000
0.2	Shallow Resistivity	2000
10000	Line Tension	0

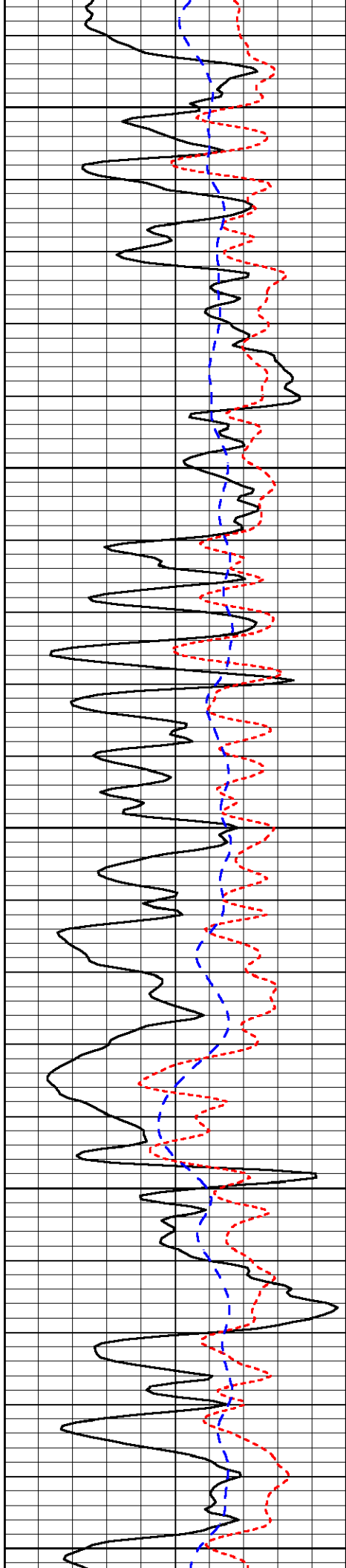
LSPD



3400



-35



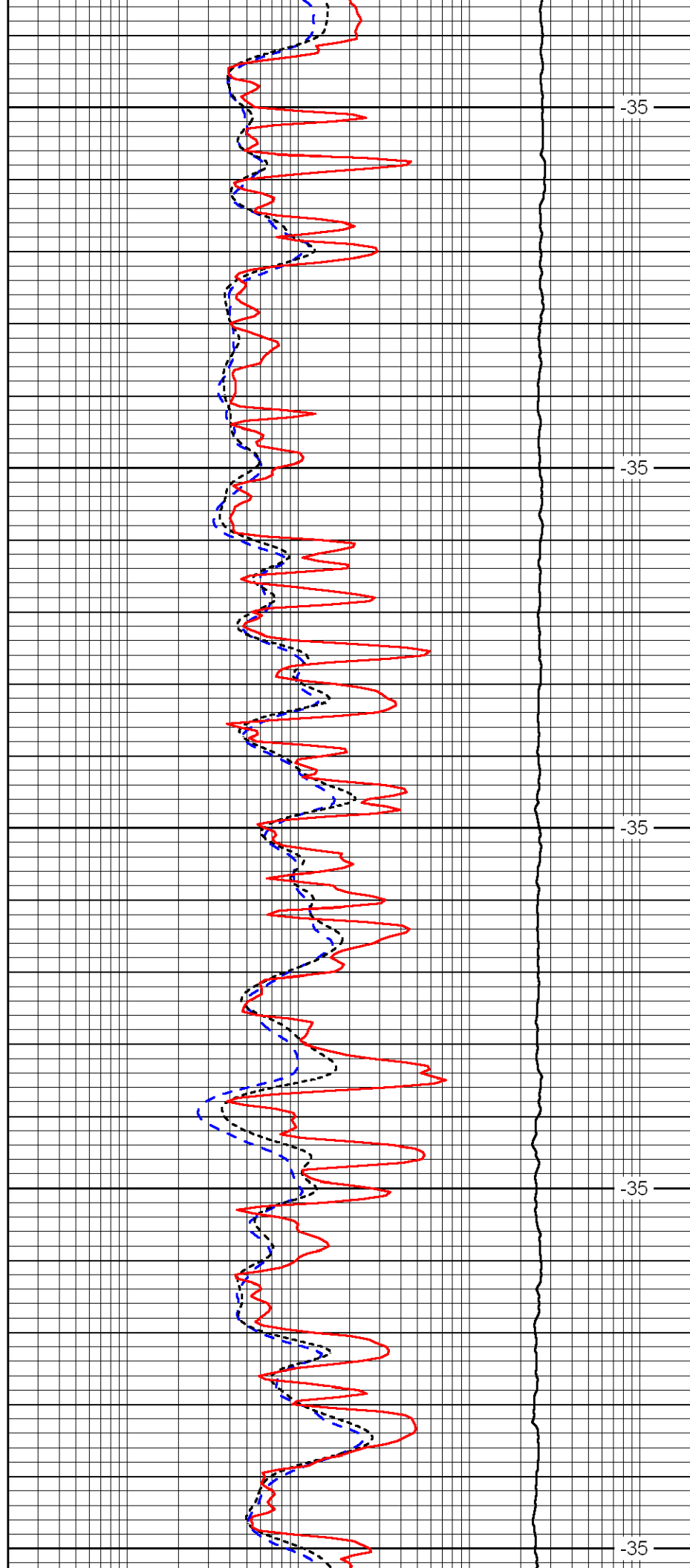
3450

3500

3550

3600

3650



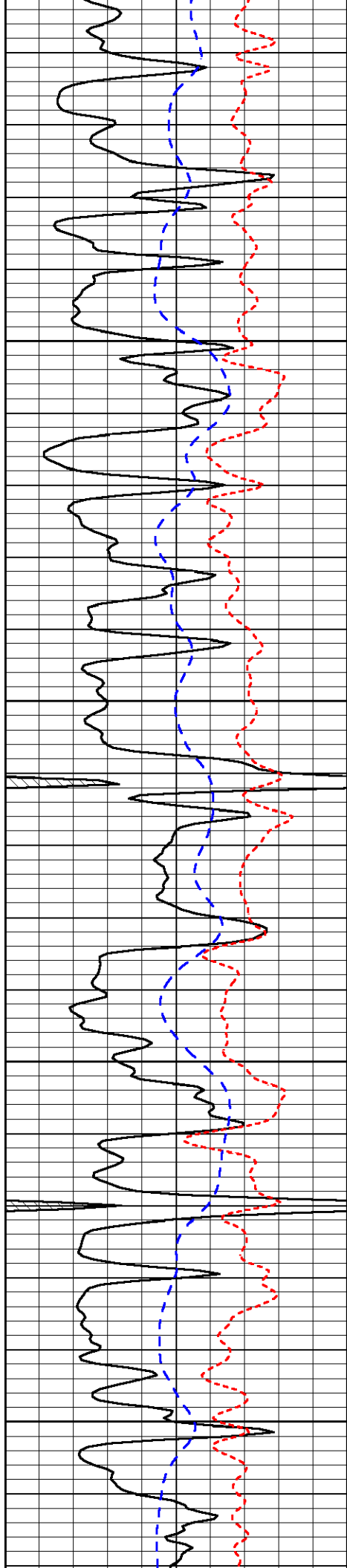
-35

-35

-35

-35

-35

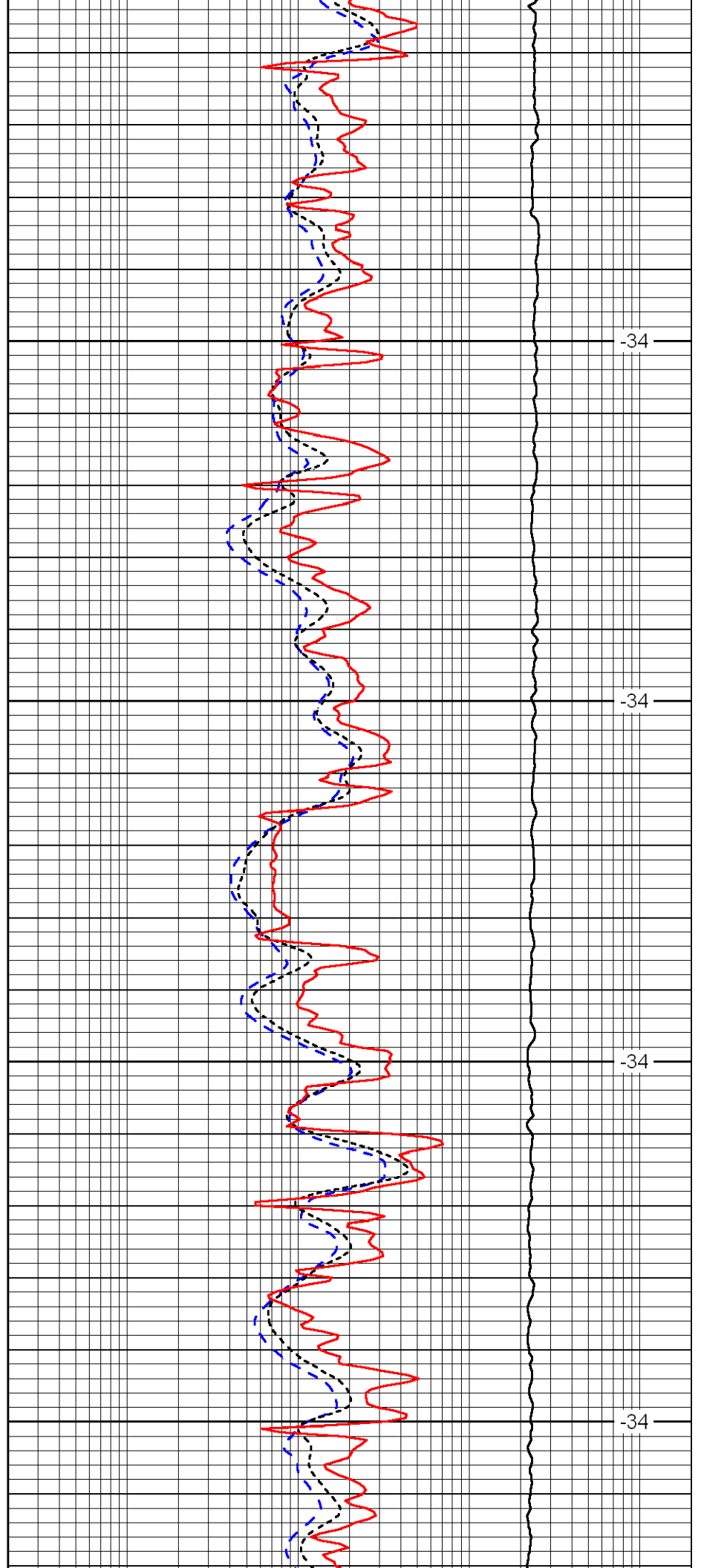


3700

3750

3800

3850

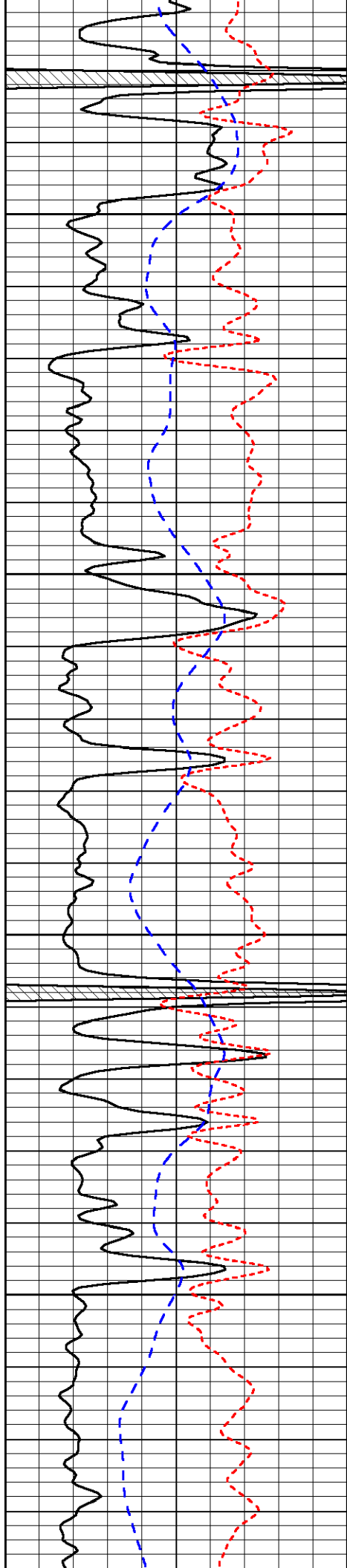


-34

-34

-34

-34

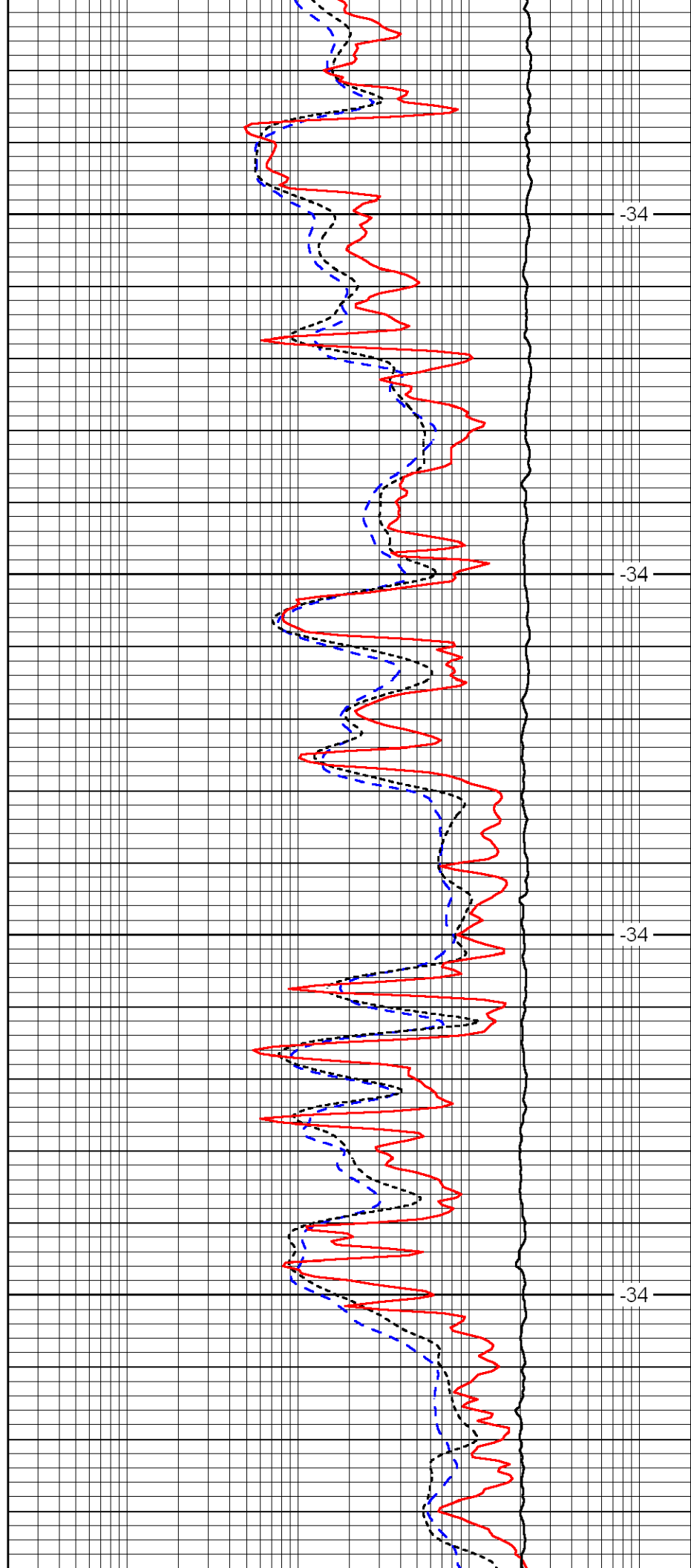


3900

3950

4000

4050

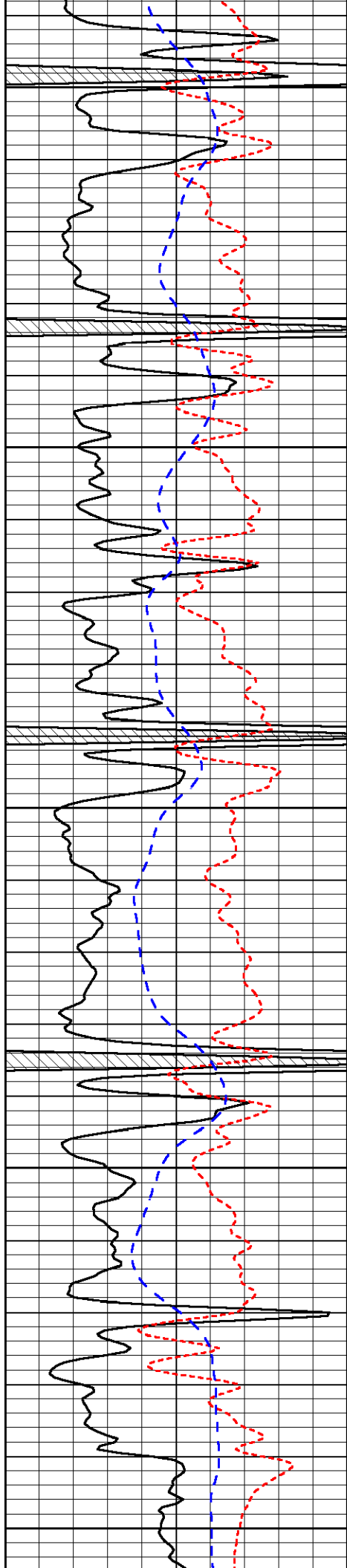


-34

-34

-34

-34



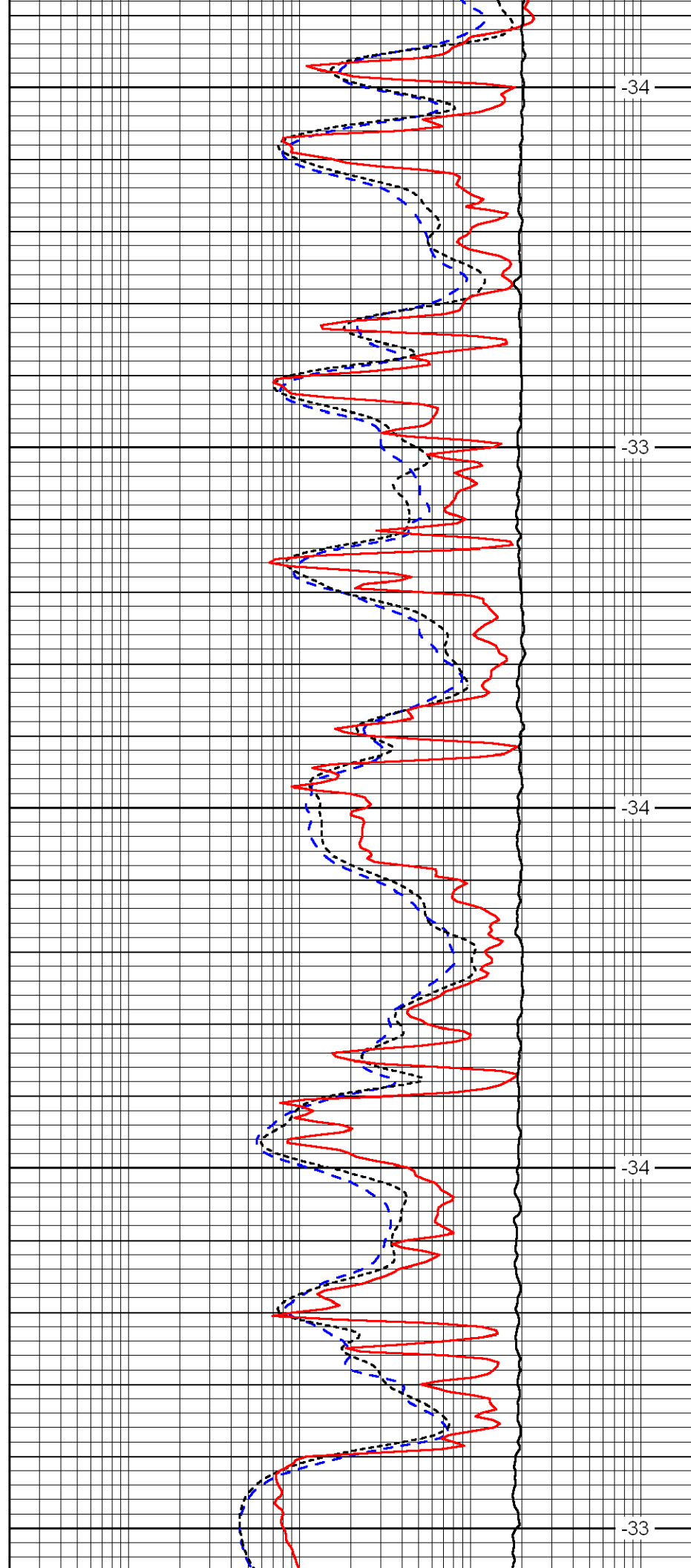
4100

4150

4200

4250

4300



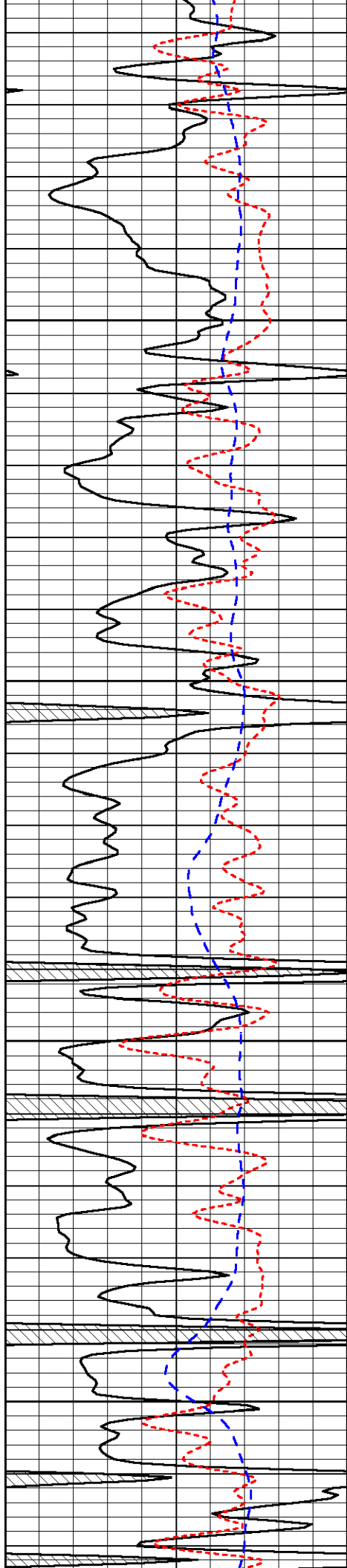
-34

-33

-34

-34

-33

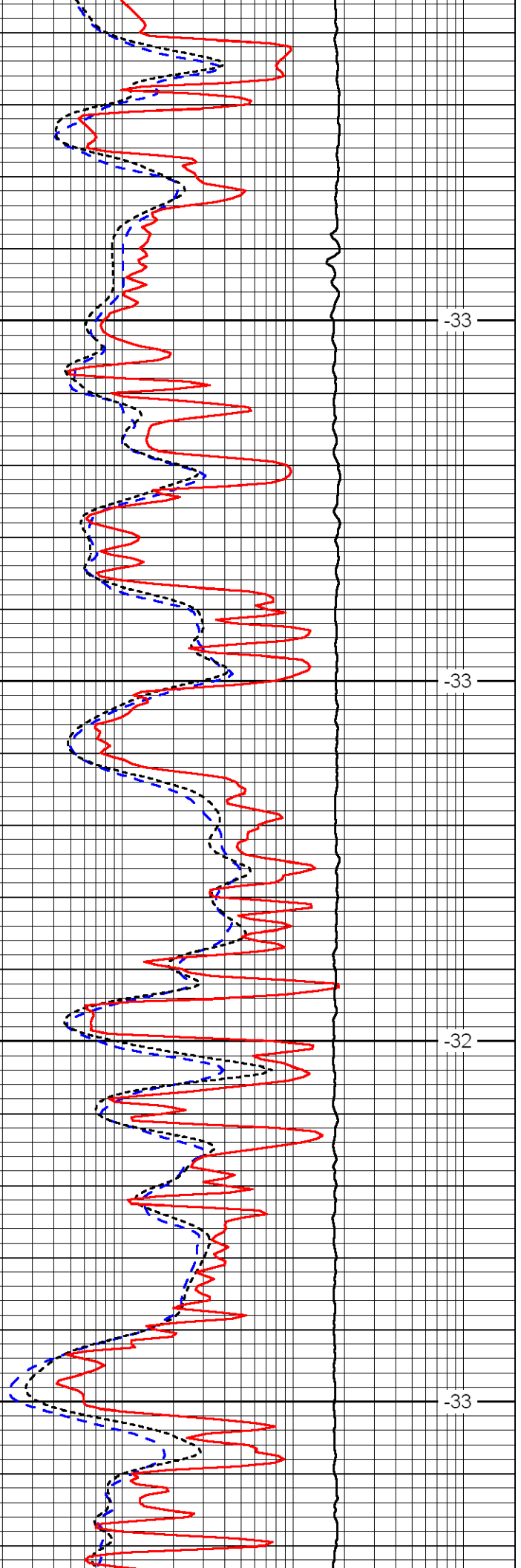


4350

4400

4450

4500

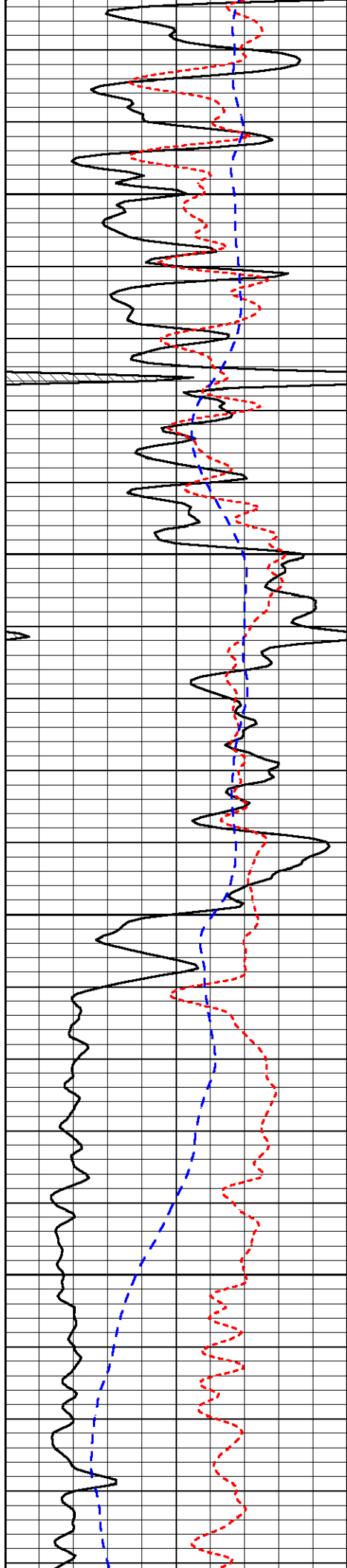


-33

-33

-32

-33

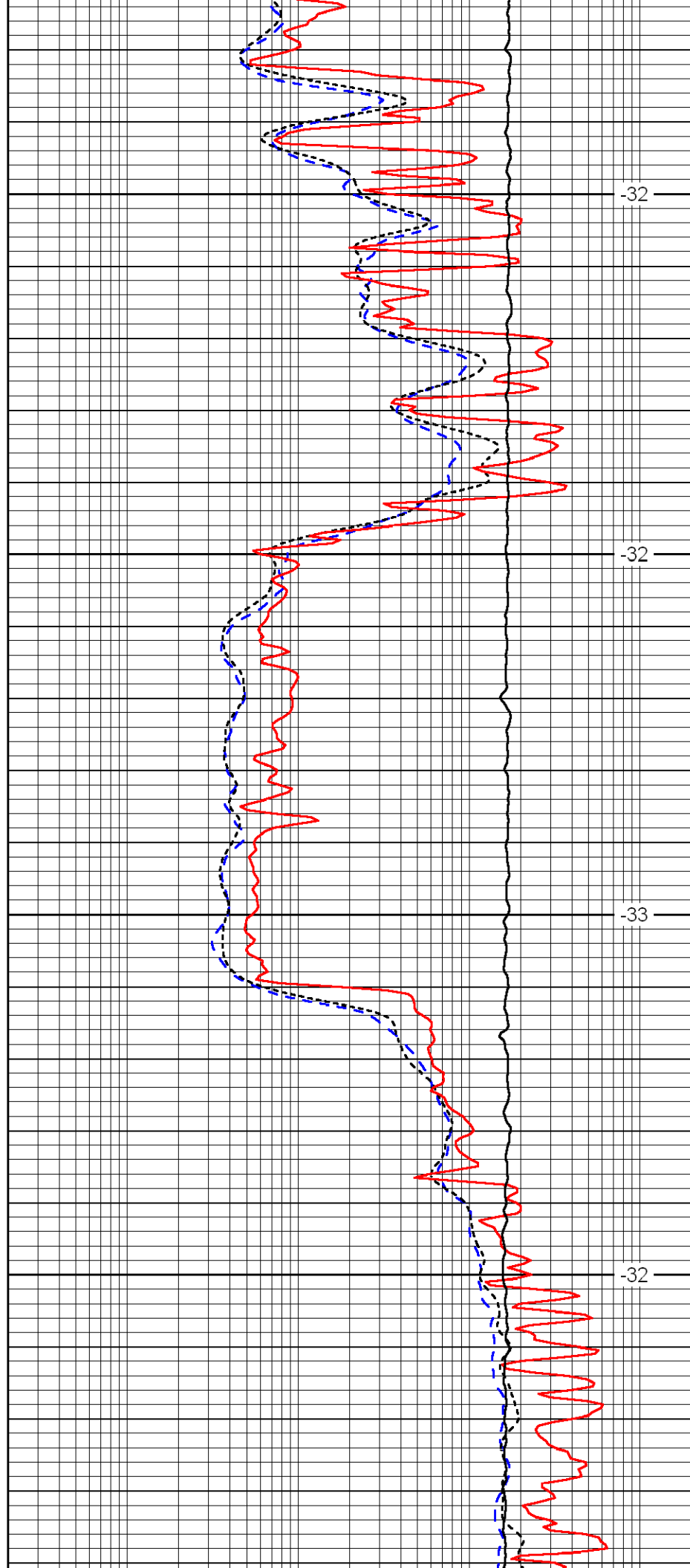


4550

4600

4650

4700

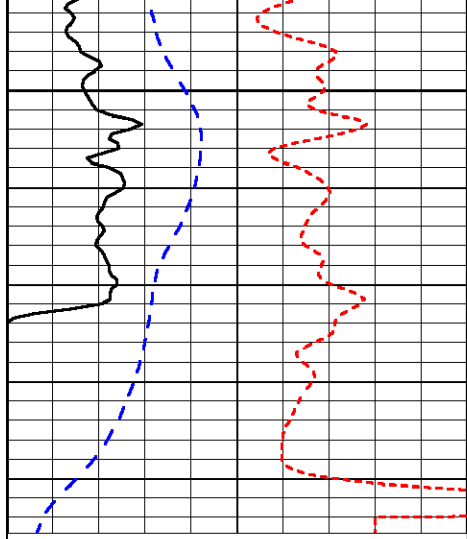


-32

-32

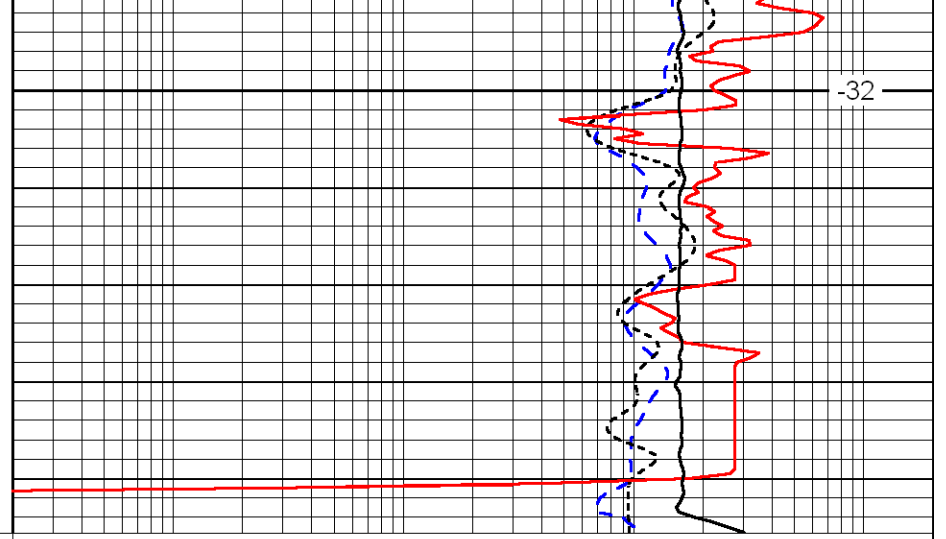
-33

-32



0	Gamma Ray	150
-160	RXO/RT	40
-200	SP	0

4750



-32

0.2	Deep Resistivity	2000
0.2	Medium Resistivity	2000
0.2	Shallow Resistivity	2000
10000	Line Tension	0

LSPD