



DIGITAL LOG (785) 625-3858

**Radiation Guard
Log**

API No.	15-051-26,034-00-00	
Company	Berecxco, LLC	
Well	Armbrister No. 1	
Field	Wildcat	
County	Elilis	State
Location	NW NW NE NE 65' FNL & 1,140' FEL	
	Sec: 10	Twp: 11S Rge: 19W
		Elevation 2063
		11 Ft. Above Perm. Datum
		Other Services MEL BHCS
		Elevation K.B. 2074 D.F. G.L. 2063

Date	10/8/2010
Run Number	One
Depth Driller	3680
Depth Logger	3681
Bottom Logged Interval	3680
Top Log Interval	250
Casing Driller	8.625 @ 283
Casing Logger	283
Bit Size	7.875
Type Fluid in Hole	Chemical
Salinity, ppm CL	8000
Density / Viscosity	9.1 51
pH / Fluid Loss	10.0 10.2
Source of Sample	Flowline
Rm @ Meas. Temp	.34 @ 72
Rmf @ Meas. Temp	.26 @ 72
Rmc @ Meas. Temp	.46 @ 72
Source of Rmf / Rmc	Charts
Rm @ BHT	.22 @ 113
Operating Rig Time	4 Hours
Max Rec. Temp. F	113
Equipment Number	10
Location	Hays
Recorded By	J. Long
Witnessed By	Bryan Bynog

<<< Fold Here >>>

All interpretations are opinions based on inferences from electrical or other measurements and we cannot and do not guarantee the accuracy or correctness of any interpretation, and we shall not, except in the case of gross or willful negligence on our part, be liable or responsible for any loss, costs, damages, or expenses incurred or sustained by anyone resulting from any interpretation made by any of our officers, agents or employees. These interpretations are also subject to our general terms and conditions set out in our current Price Schedule.

Comments

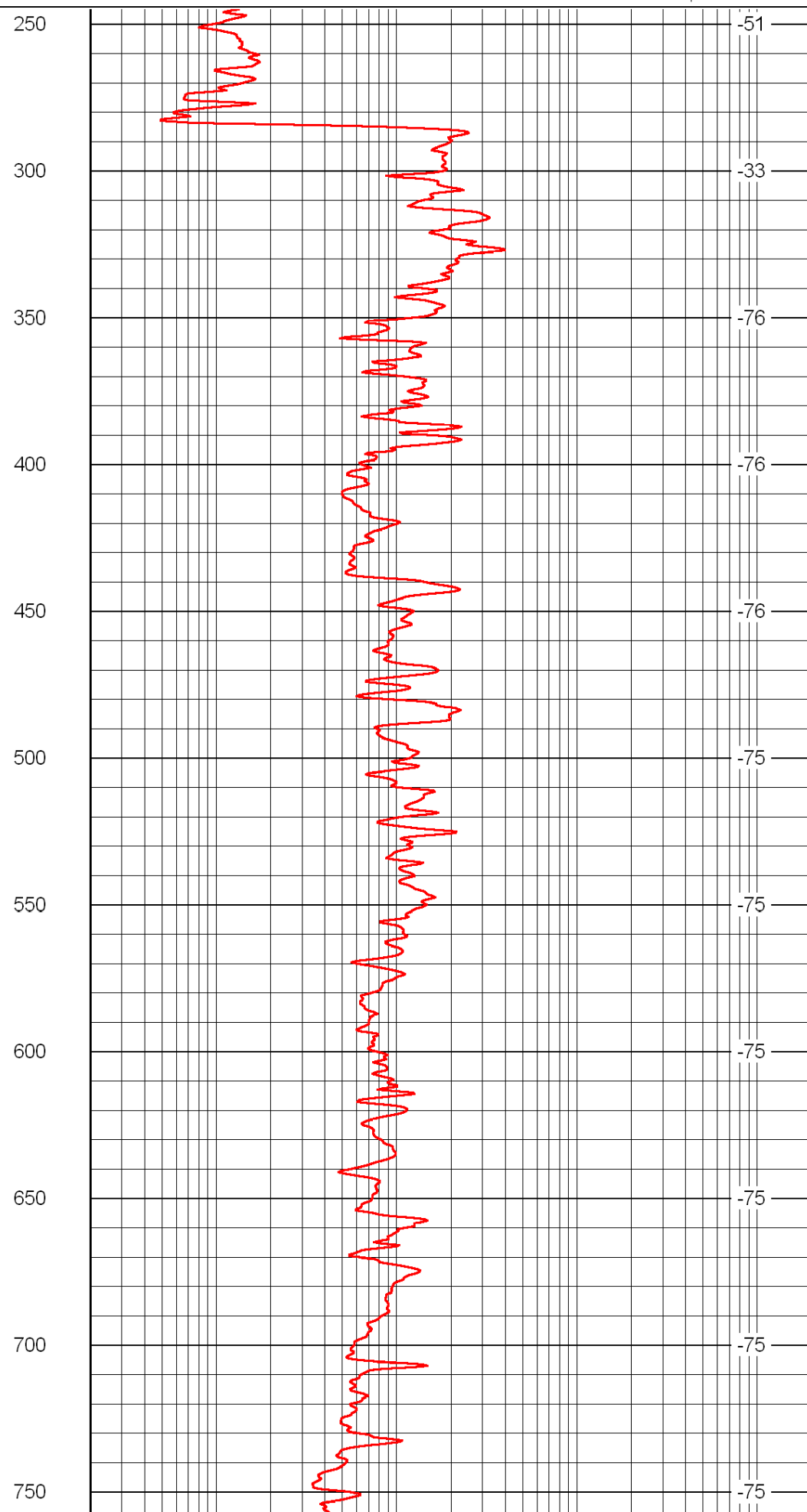
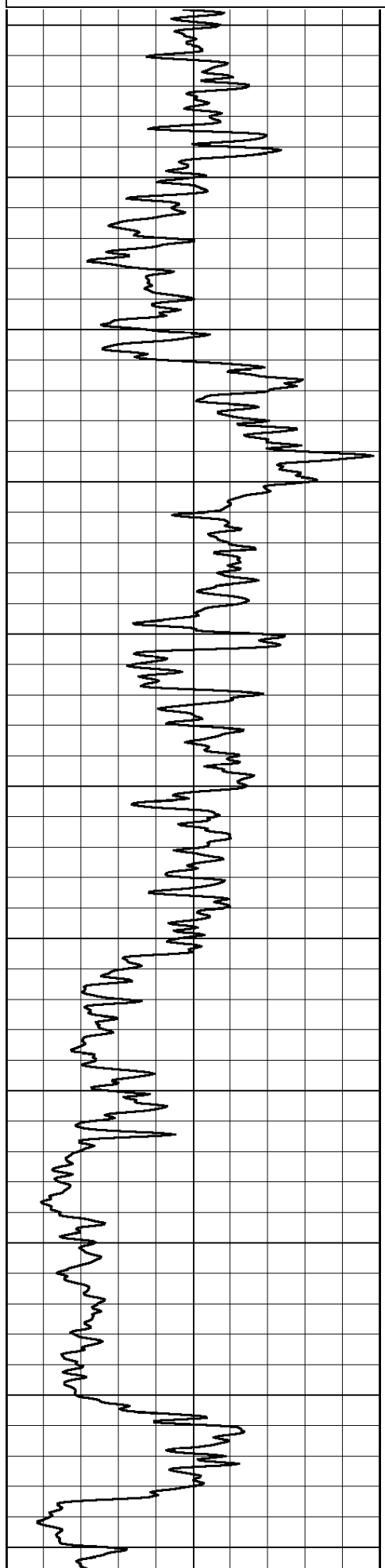
Thank you for using Log-Tech, Inc.
(785) 625-3858

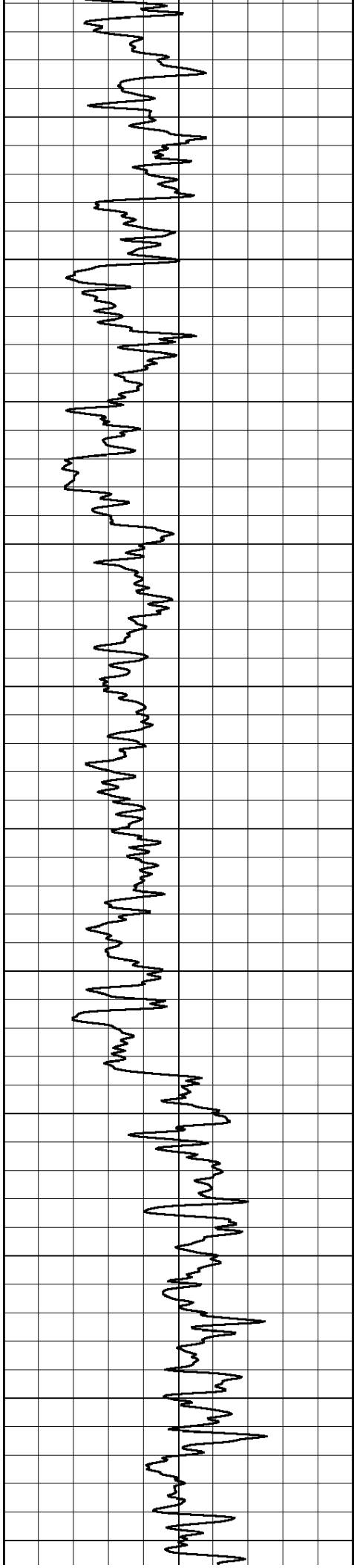
Hays, North to Saline River Rd, 6 West to 200 Rd, 1 North, West Into

0 Gamma Ray 150

0.2 lgrd 2000

LSPD





800

850

900

950

1000

1050

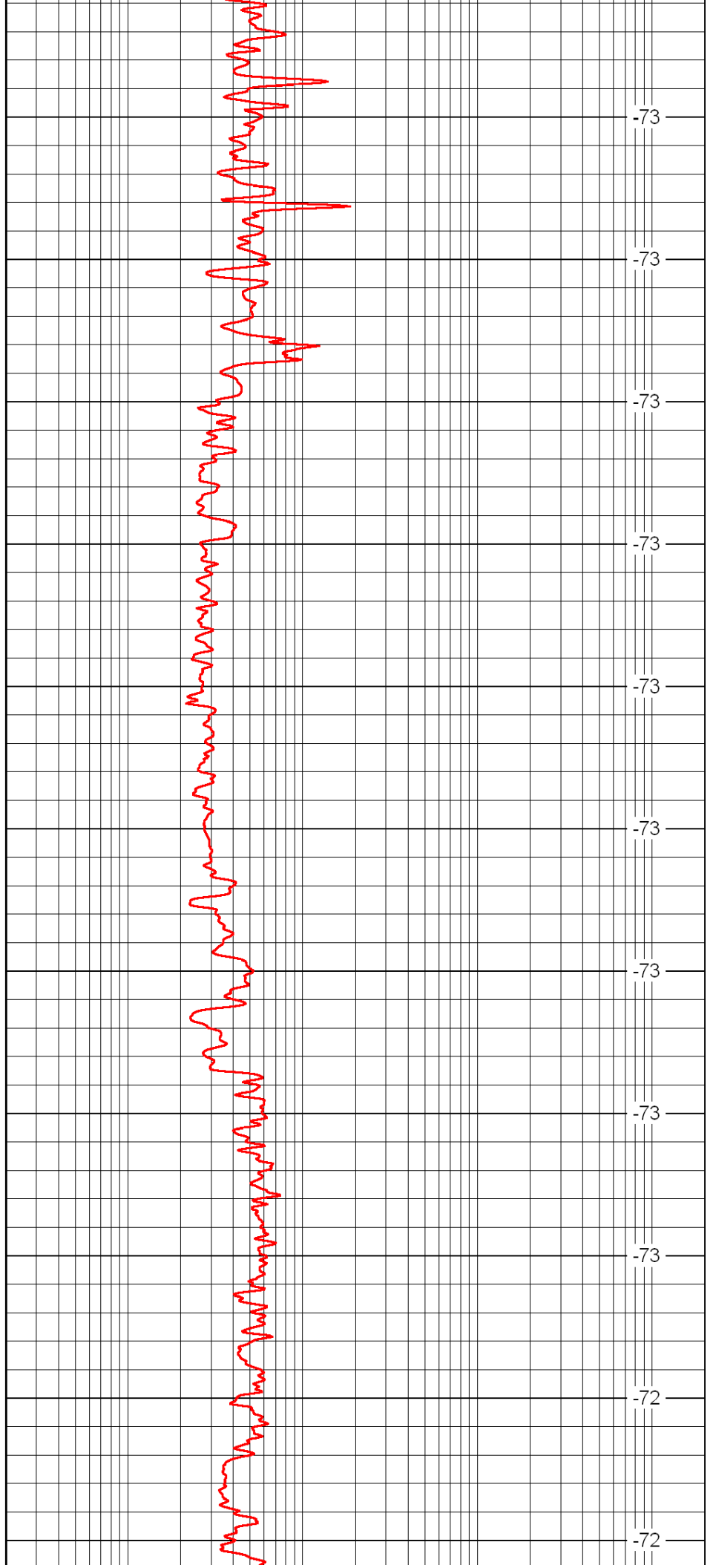
1100

1150

1200

1250

1300



-73

-73

-73

-73

-73

-73

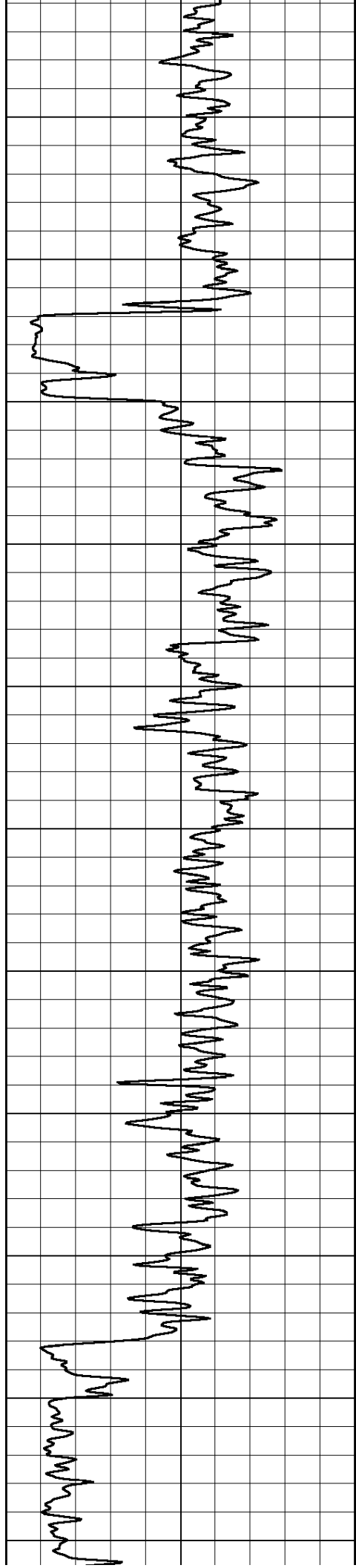
-73

-73

-73

-72

-72



1350

1400

1450

1500

1550

1600

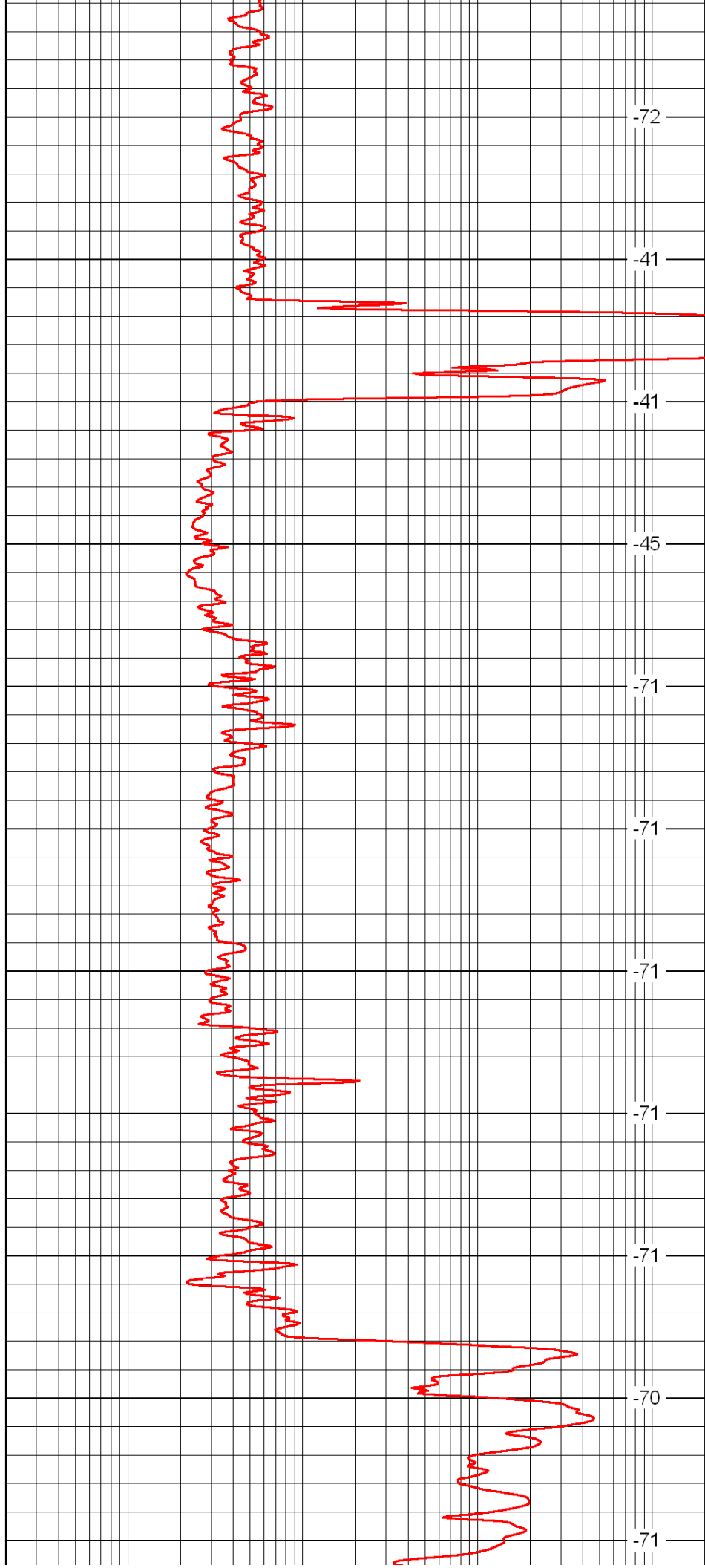
1650

1700

1750

1800

1850



-72

-41

-41

-45

-71

-71

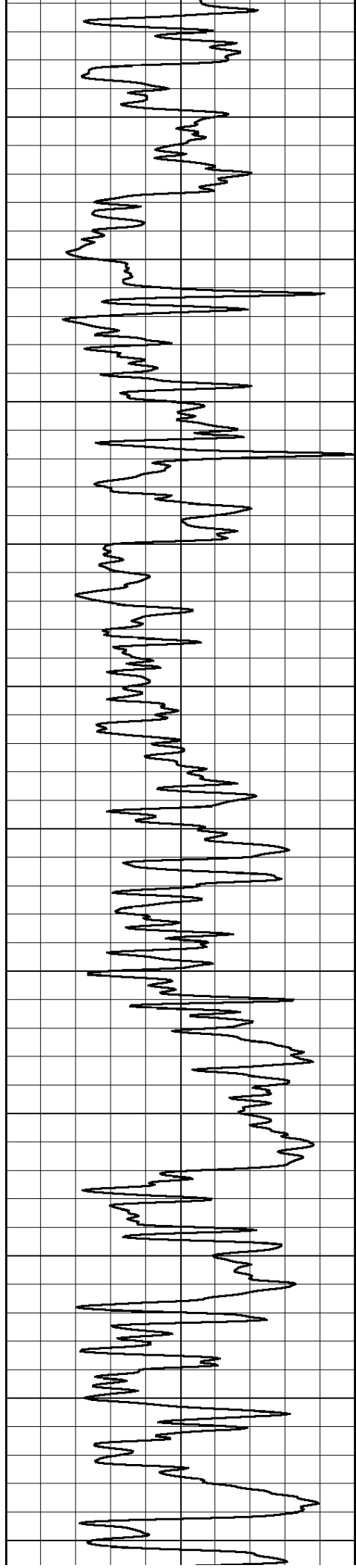
-71

-71

-71

-70

-71



2450

2500

2550

2600

2650

2700

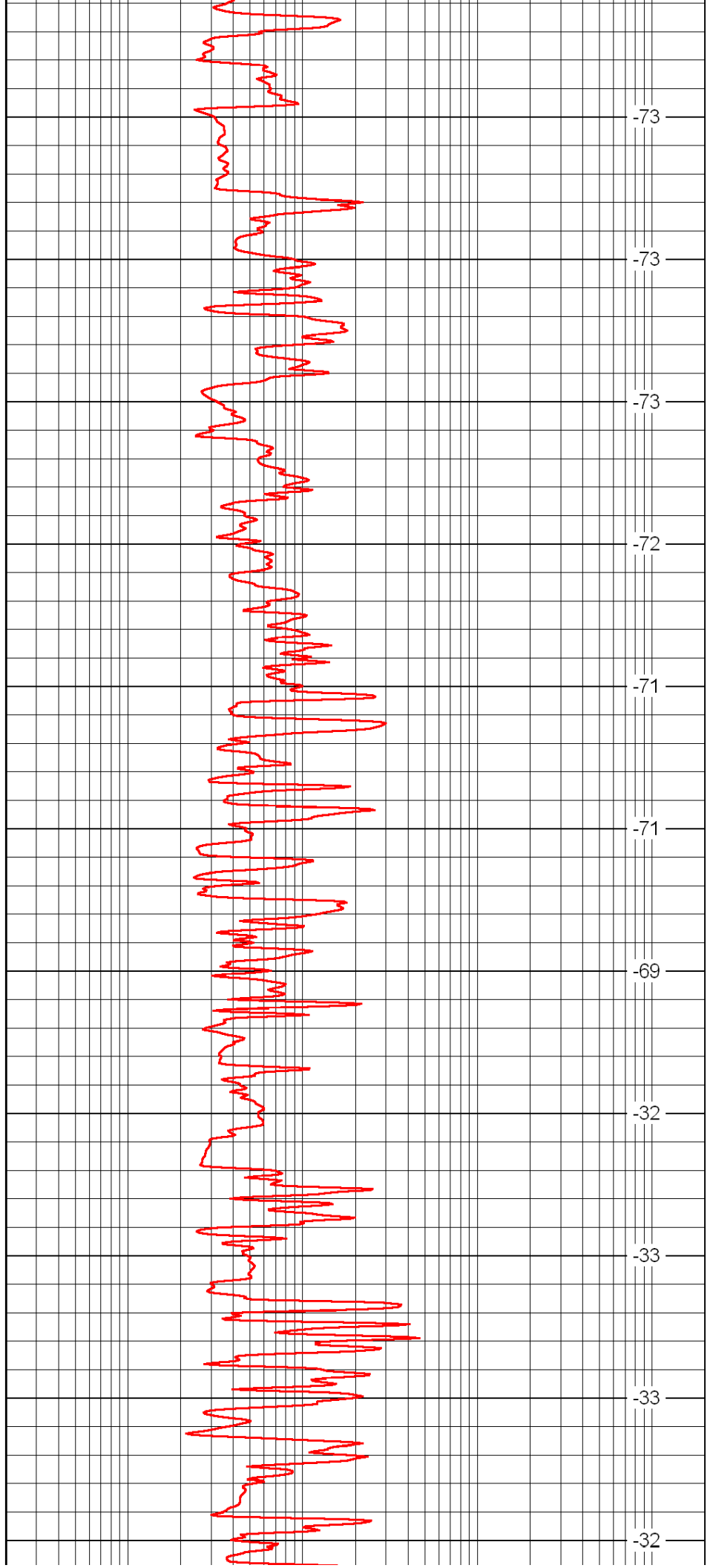
2750

2800

2850

2900

2950



-73

-73

-73

-72

-71

-71

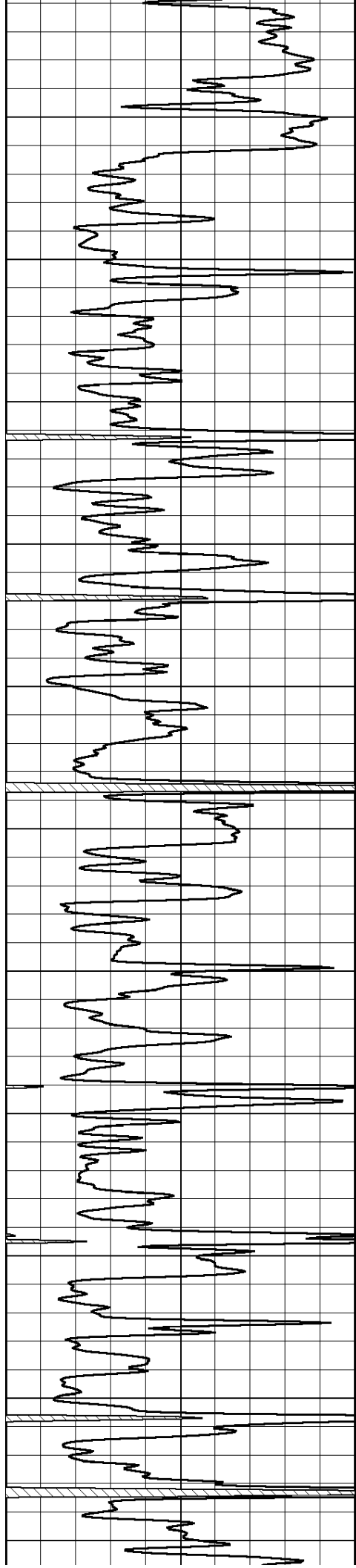
-69

-32

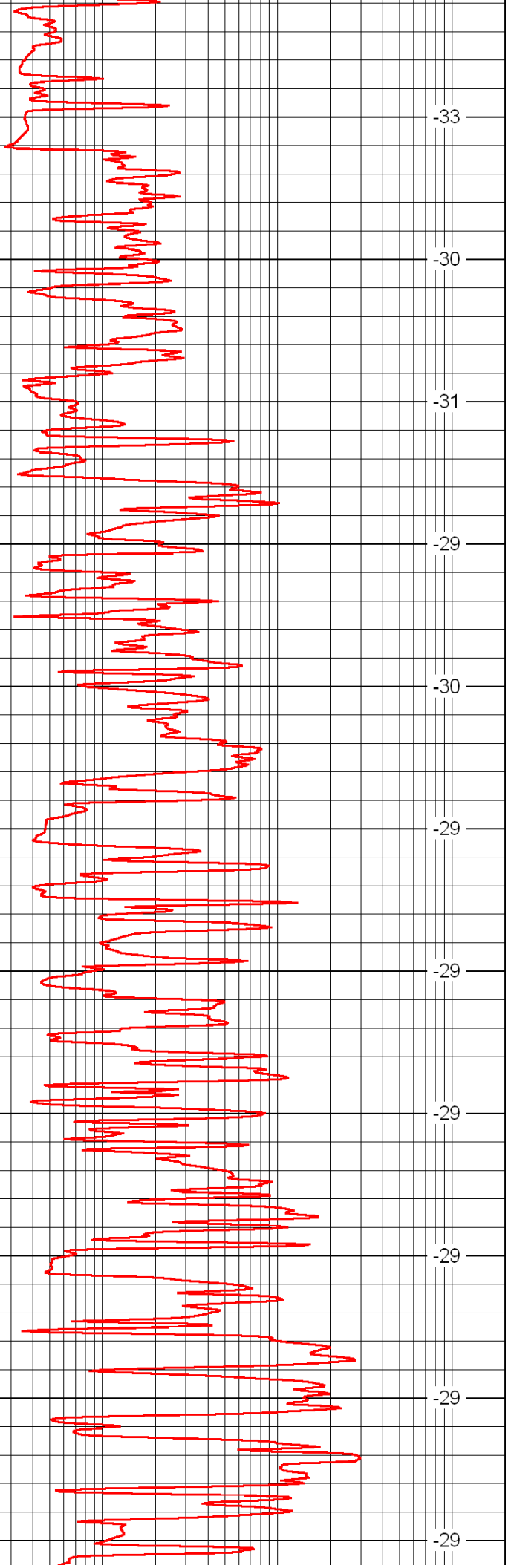
-33

-33

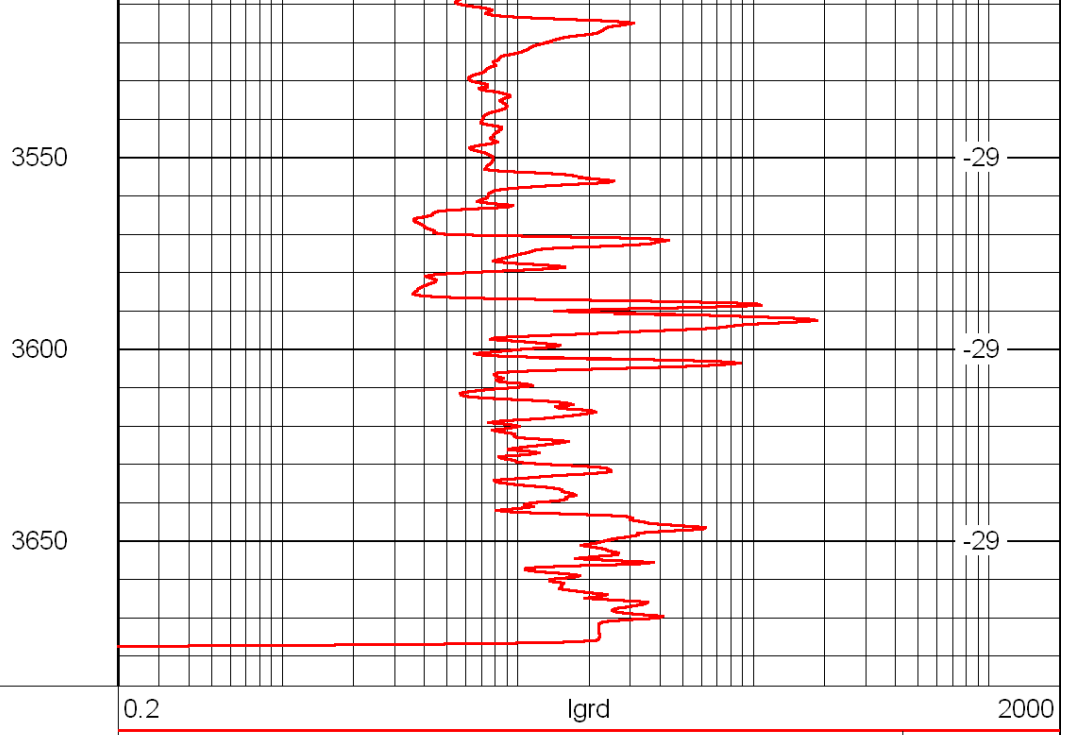
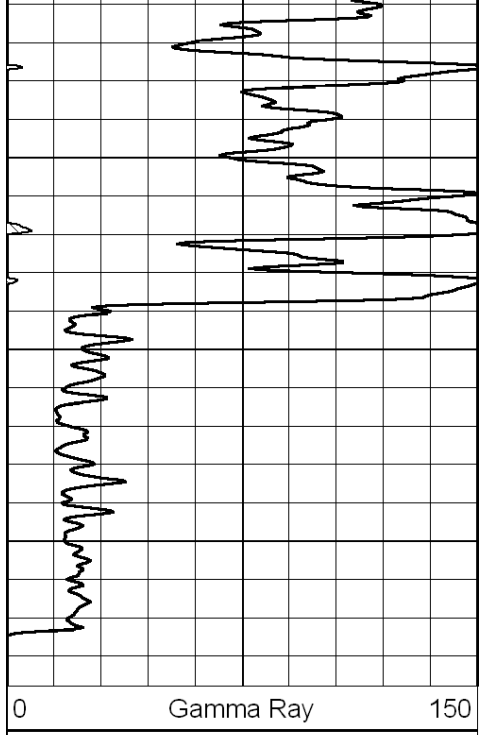
-32



3000
3050
3100
3150
3200
3250
3300
3350
3400
3450
3500

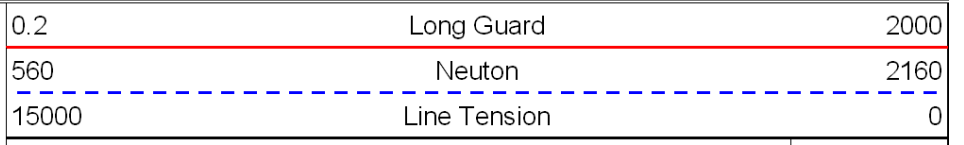
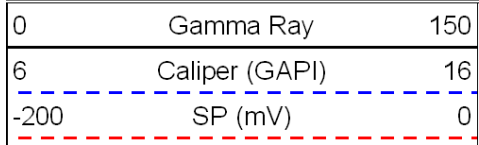


-33
-30
-31
-29
-30
-29
-29
-29
-29
-29

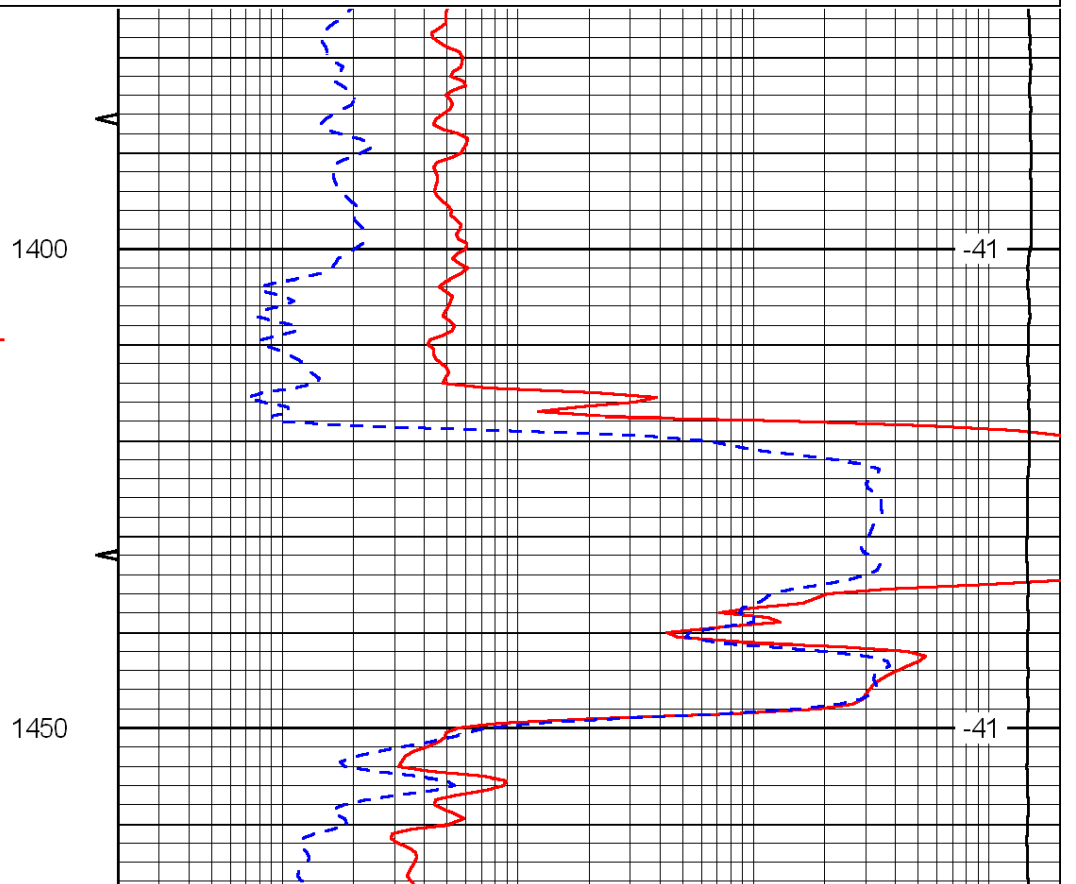
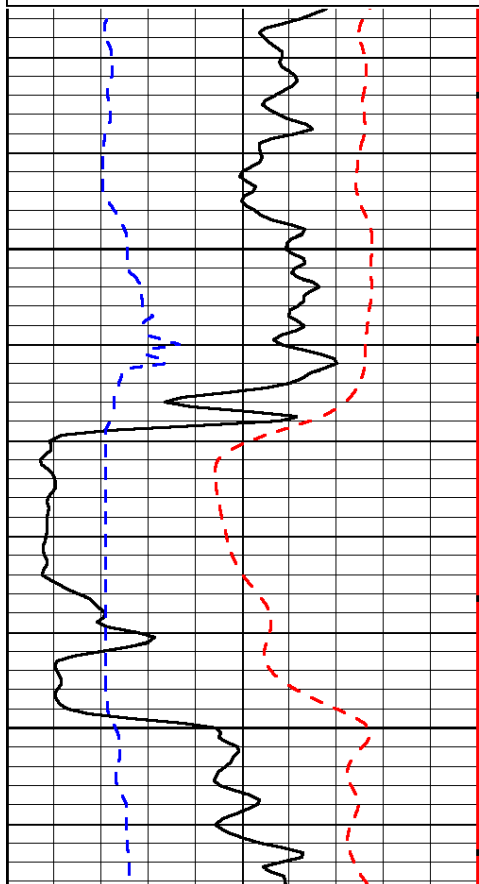


LSPD

Database File: c:\warrior\data\berexco_armbrister no. 1\berexco_armbrister_1hd.db
 Dataset Pathname: rag/berrag
 Presentation Format: rag
 Dataset Creation: Fri Oct 08 07:14:35 2010
 Charted by: Depth in Feet scaled 1:240

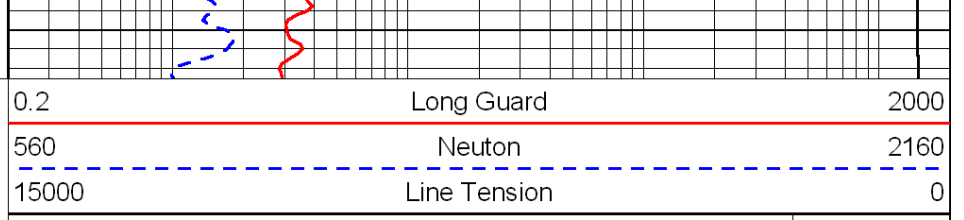
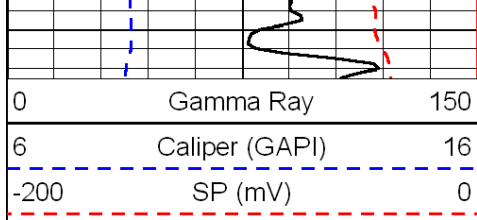


LSPD



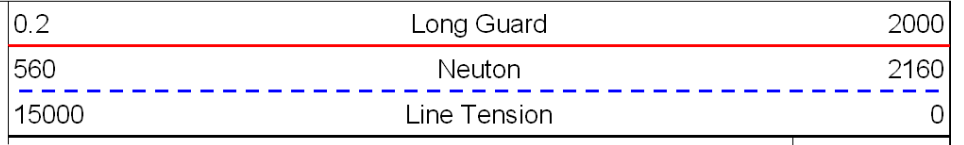
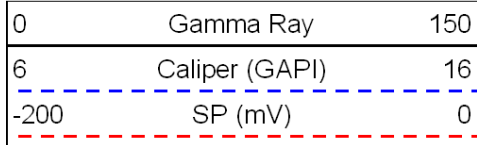
-41

-41

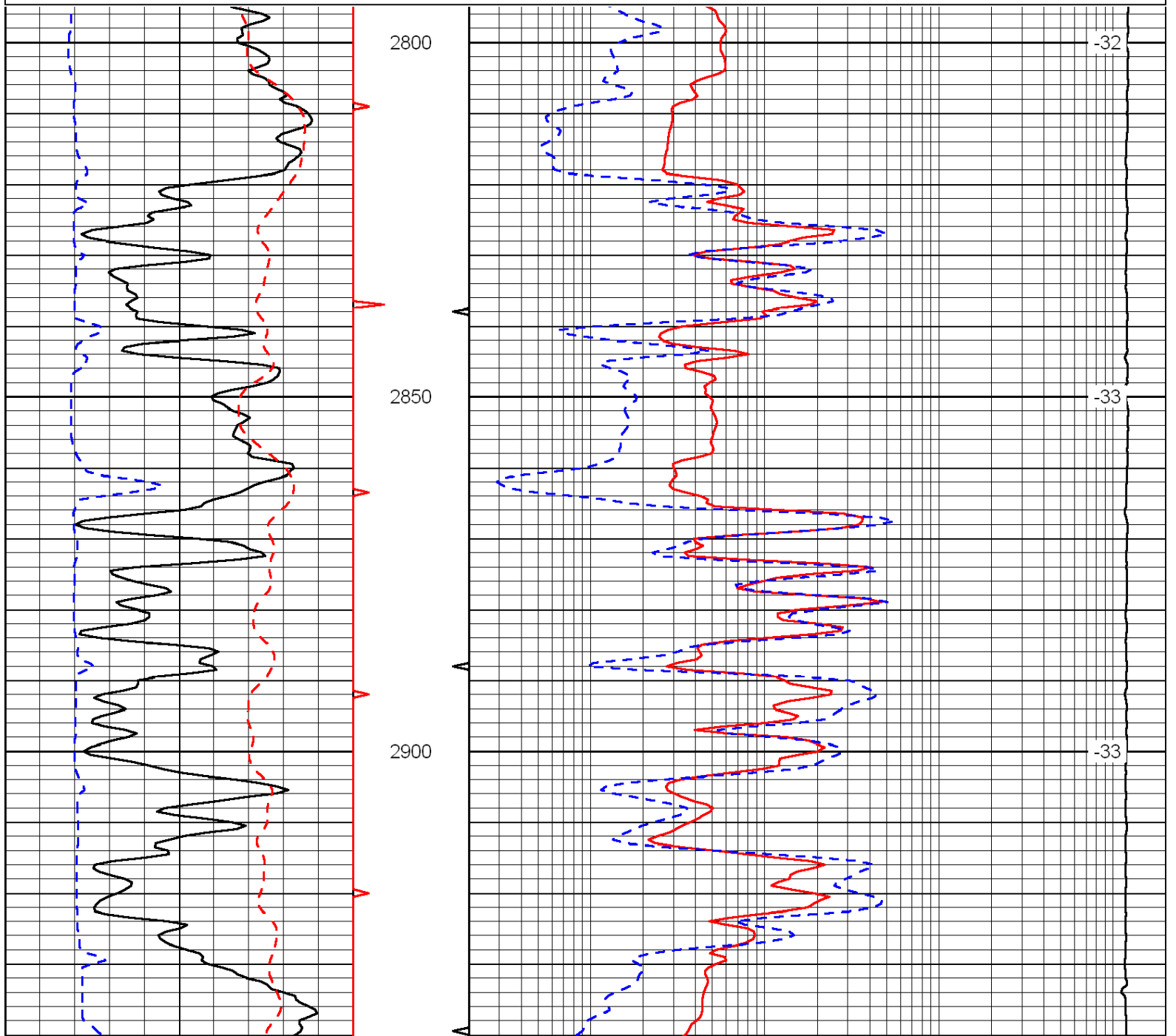


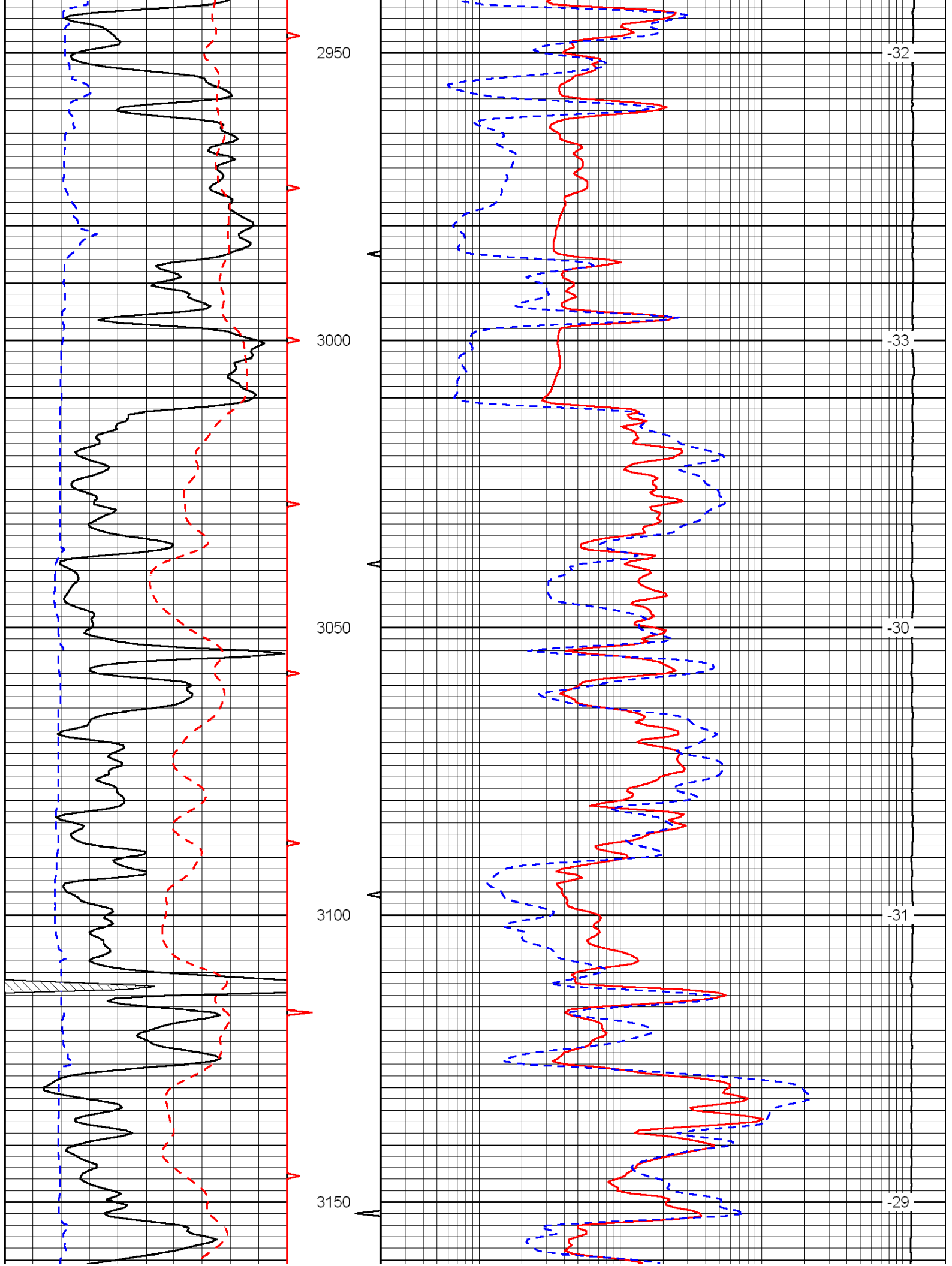
LSPD

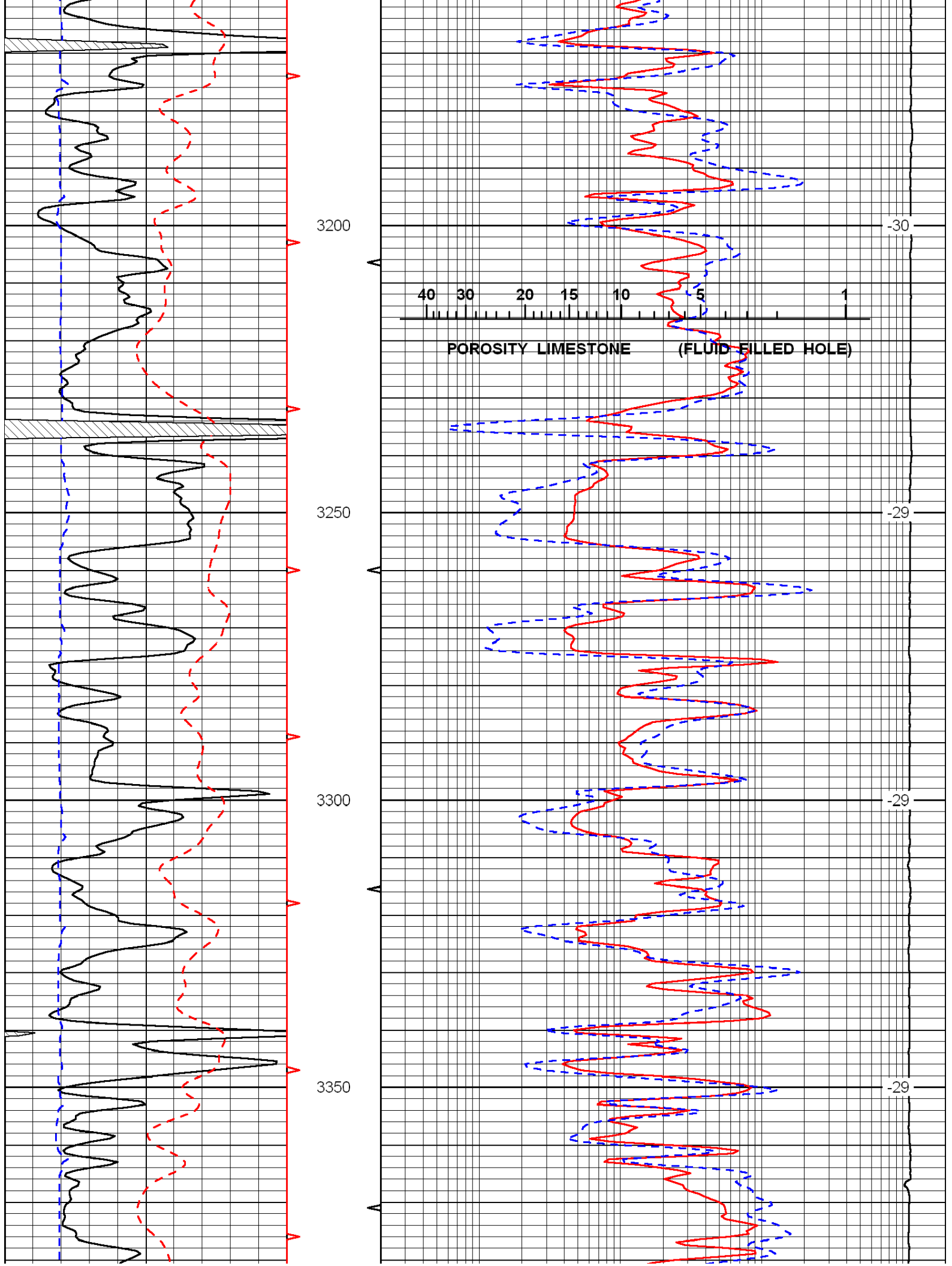
Database File: c:\warrior\data\berexco_armbrister no. 1\berexco_armbrister_1hd.db
 Dataset Pathname: rag/berrag
 Presentation Format: rag
 Dataset Creation: Fri Oct 08 07:14:35 2010
 Charted by: Depth in Feet scaled 1:240

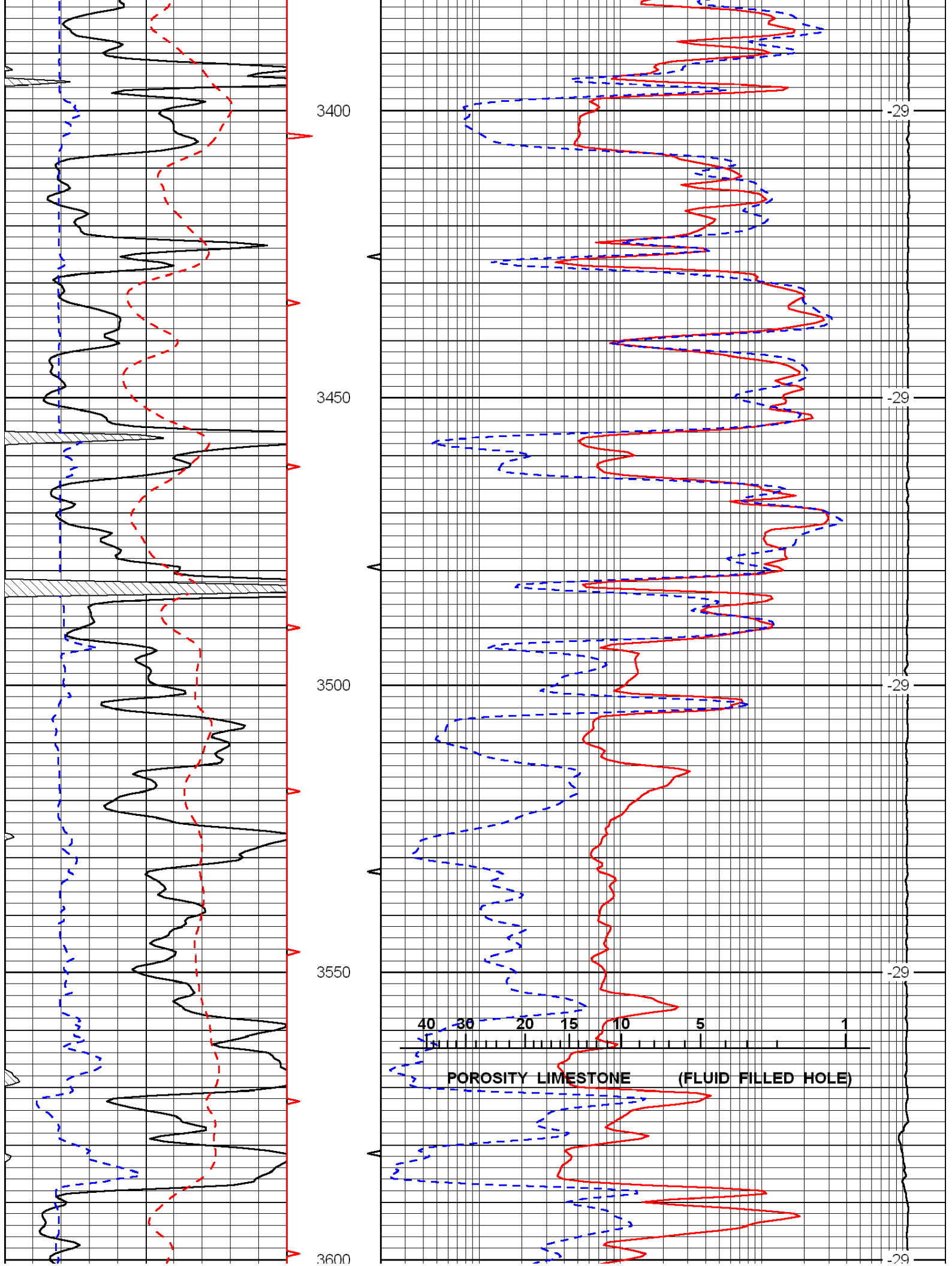


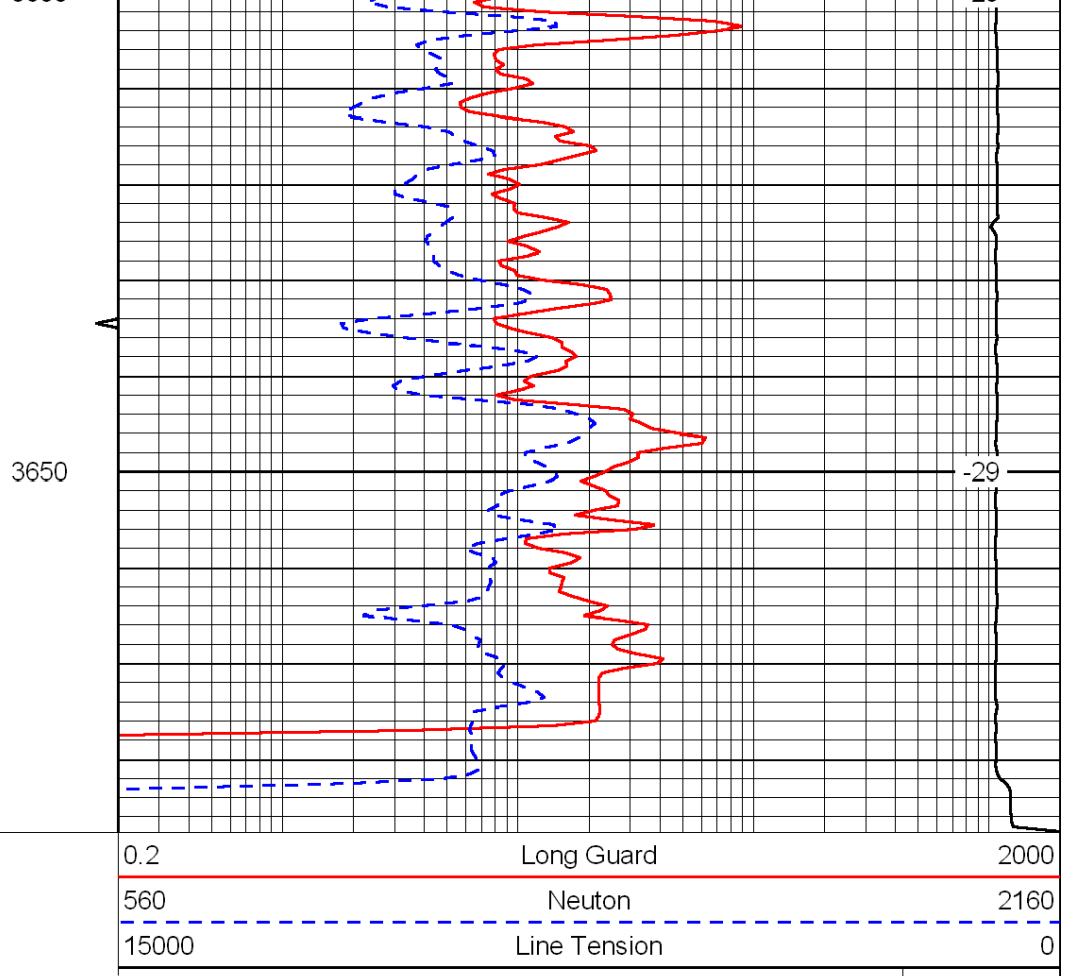
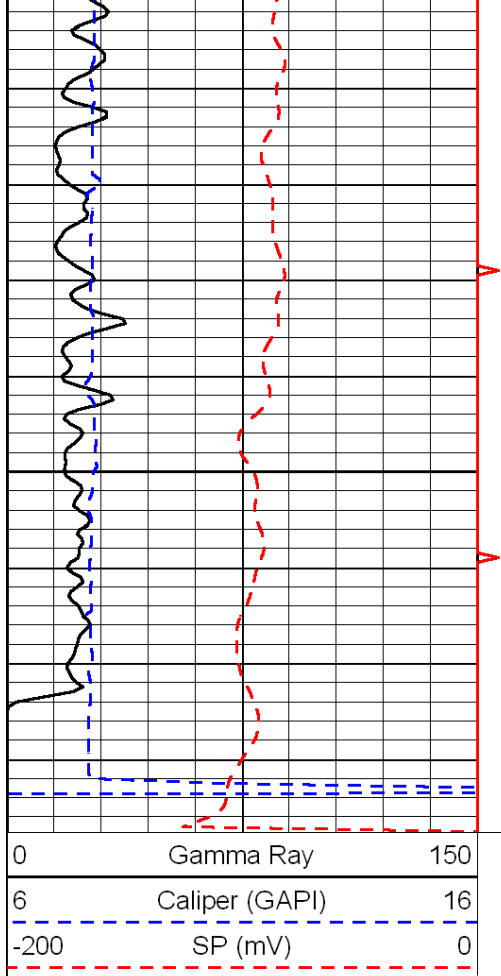
LSPD











LSPD