



DIGITAL LOG (785) 625-3858

Borehole Compensated
Sonic Log

API No. 15-051-26,034-00-00

Company Berexco, LLC
Well Armbrister No. 1
Field Wildcat
County Eliis
State Kansas

Location NW NW NE NE
65' FNL & 1,140' FEL

Sec: 10 Twp: 11S Rge: 19W

Other Services
RAG
MEL

Permanent Datum Ground Level Elevation 2063
Log Measured From Kelly Bushing 11 Ft. Above Perm. Datum
Drilling Measured From Kelly Bushing

K.B. 2074
D.F. G.L. 2063

Date 10/8/2010

Run Number Three

Type Log BHC Sonic

Depth Driller 3680

Depth Logger 3681

Bottom Logged Interval 3670

Top Logged Interval 250

Type Fluid In Hole Chemical

Salinity, PPM CL 8000

Density 9.1

Level Full

Max. Rec. Temp. F 113

Operating Rig Time 4 Hours

Equipment -- Location 10 Hays

Recorded By J. Long

Witnessed By Bryan Bynog

Borehole Record				Casing Record			
Run No.	Bit	From	To	Size	Wgt.	From	To
1	12.25	00	283	8.625	24#	00	283
2	7.875	283	3680				

<<< Fold Here >>>

All interpretations are opinions based on inferences from electrical or other measurements and we cannot and do not guarantee the accuracy or correctness of any interpretation, and we shall not, except in the case of gross or willful negligence on our part, be liable or responsible for any loss, costs, damages, or expenses incurred or sustained by anyone resulting from any interpretation made by any of our officers, agents or employees. These interpretations are also subject to our general terms and conditions set out in our current Price Schedule.

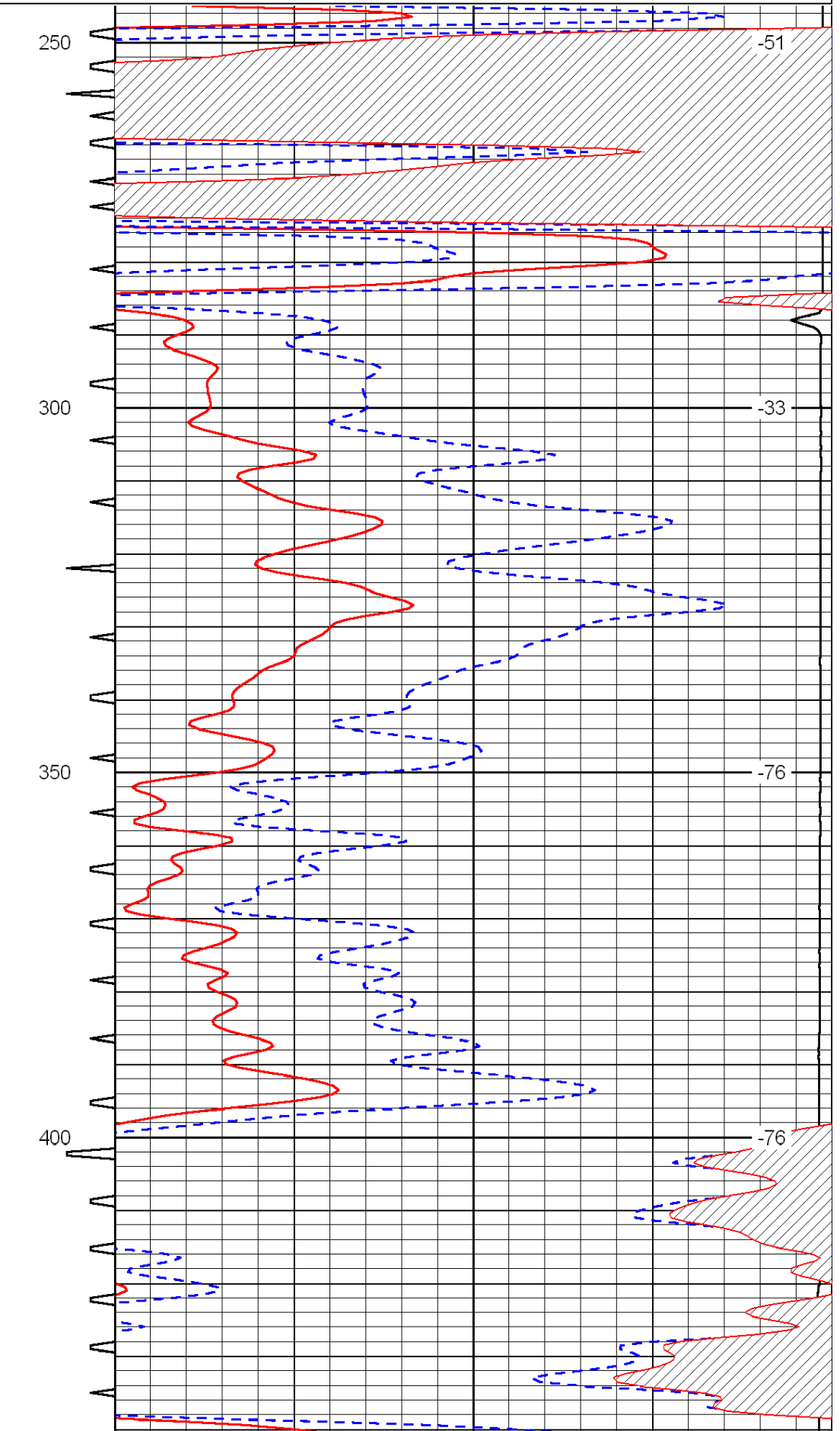
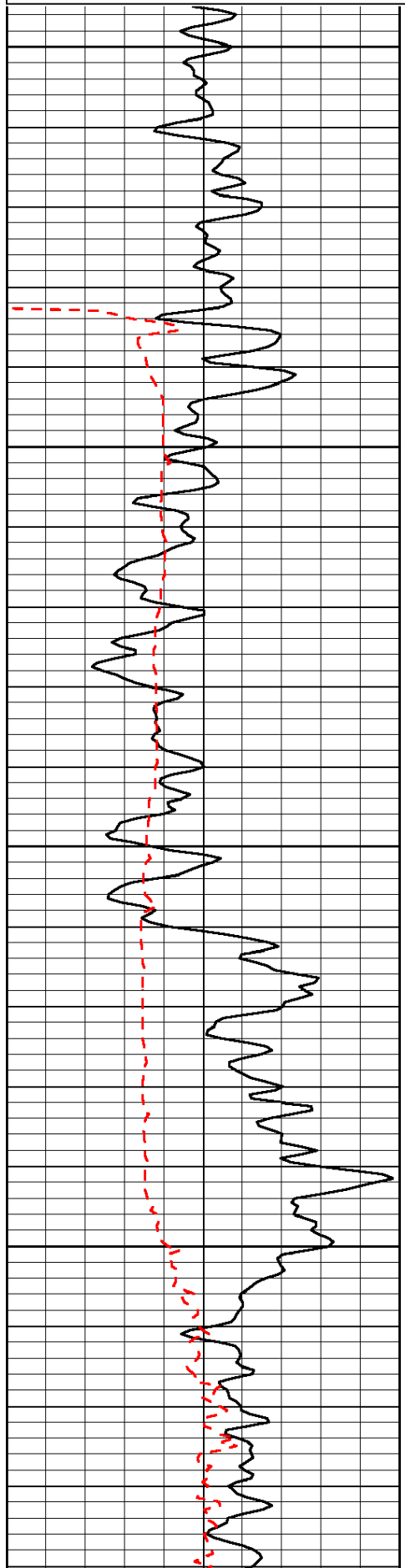
Comments

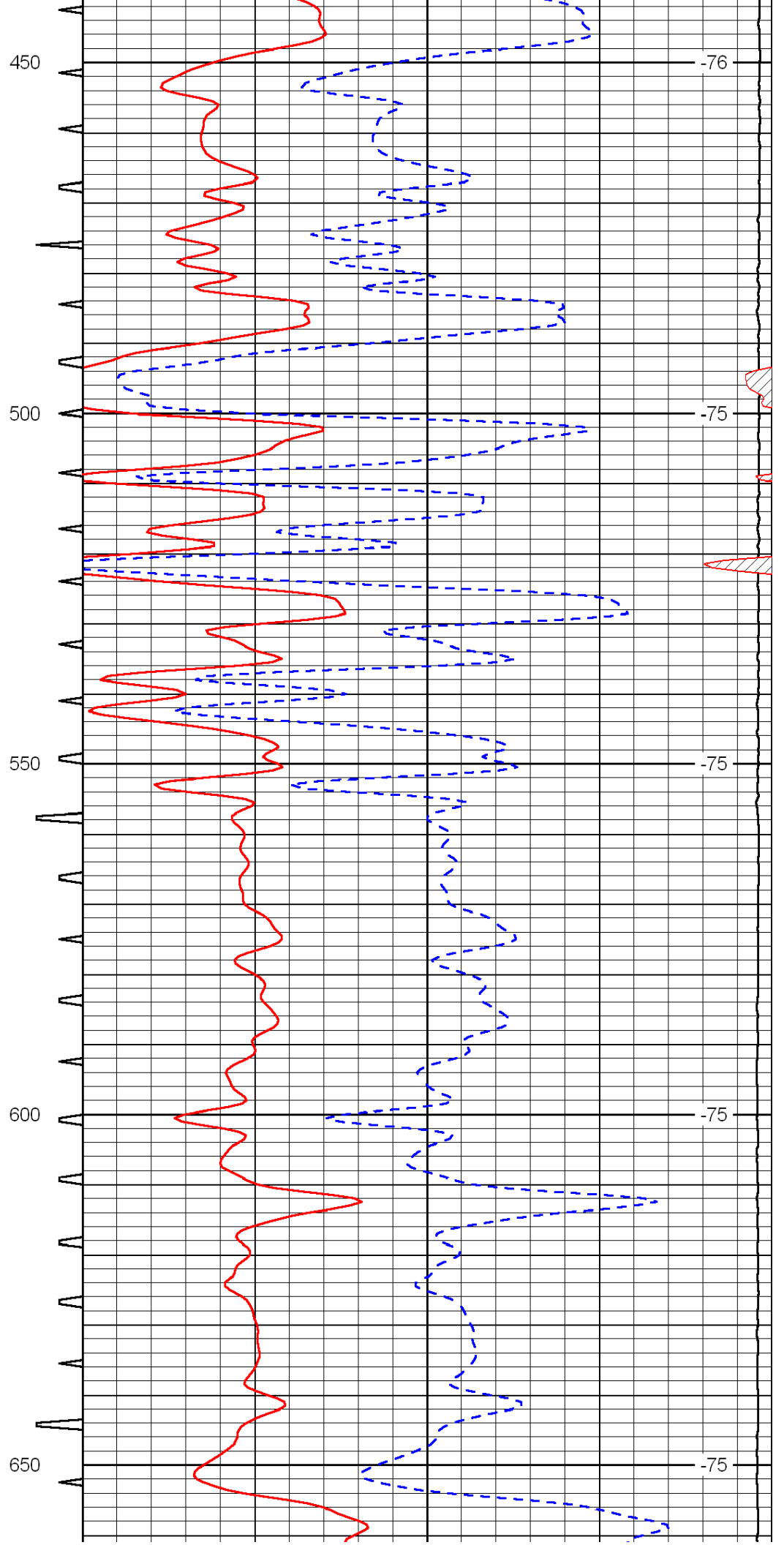
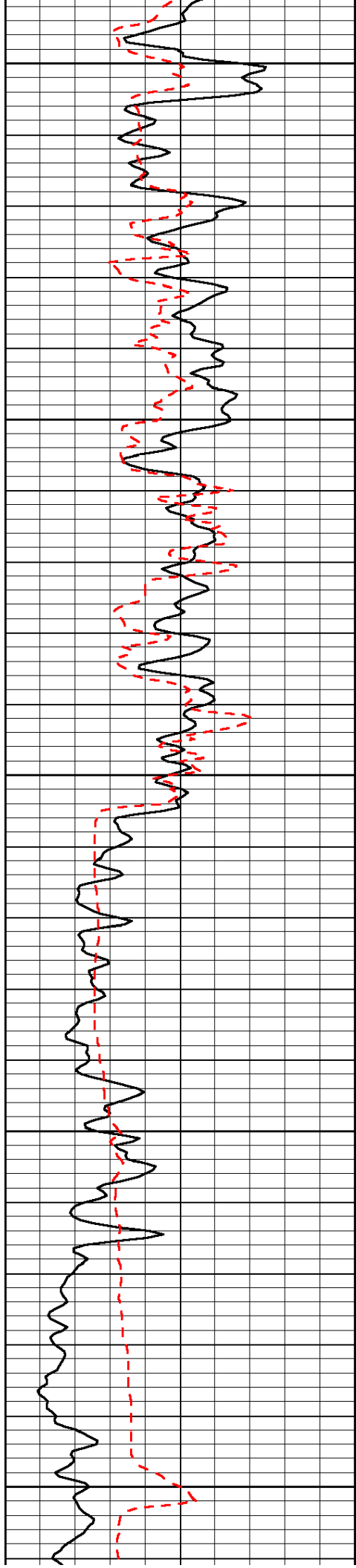
Thank you for using Log-Tech, Inc.
(785) 625-3858

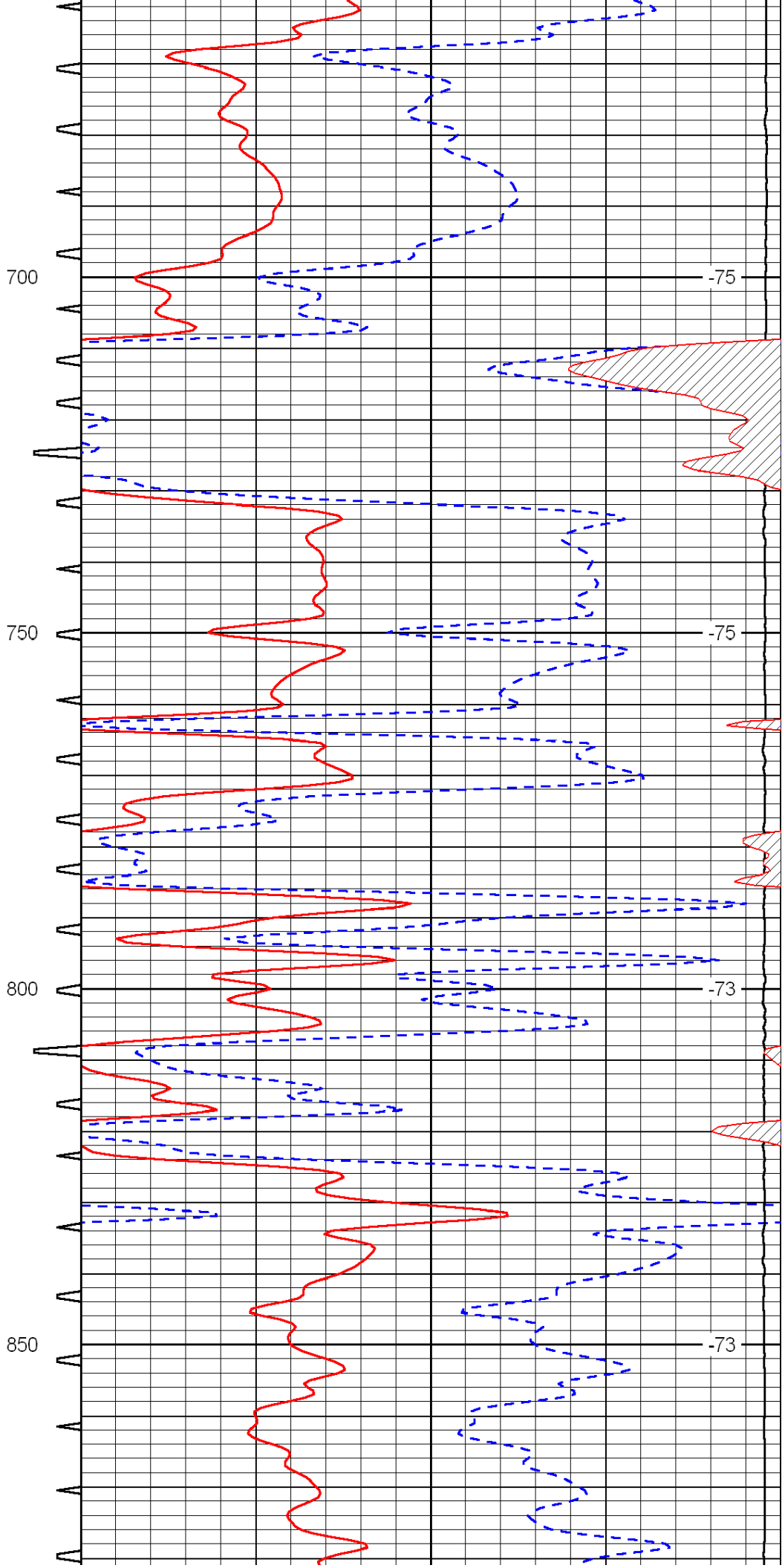
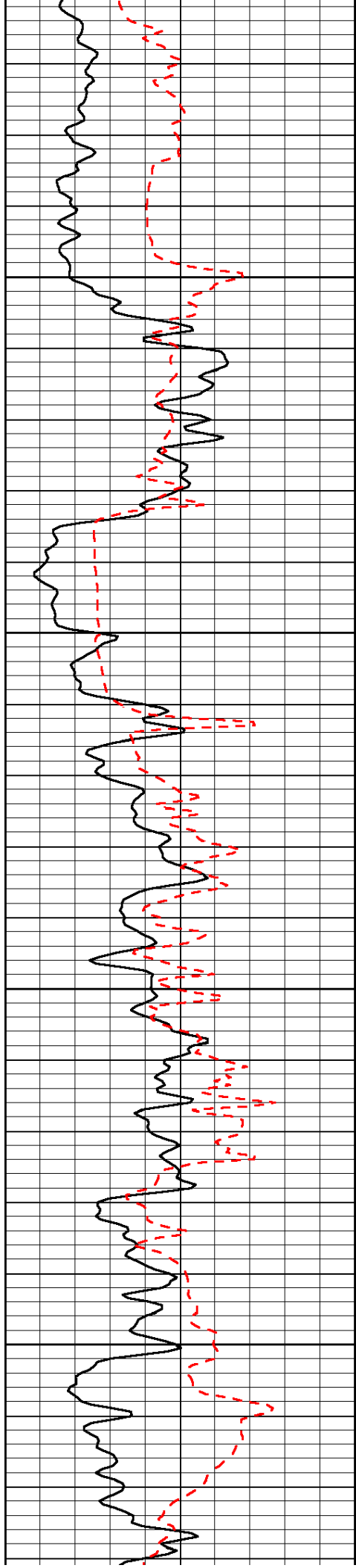
Hays, North to Saline River Rd, 6 West to 200 Rd, 1 North, West Into

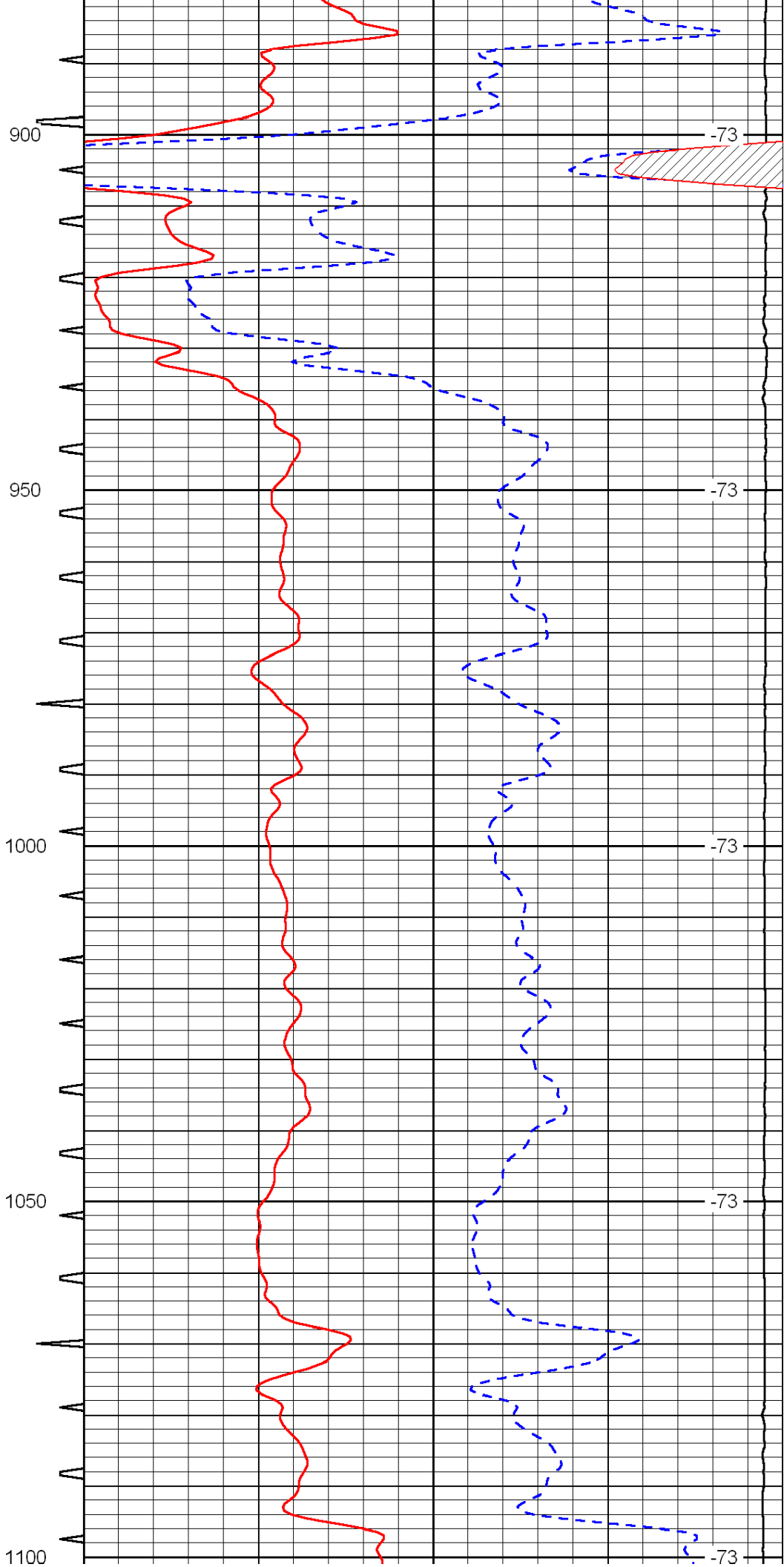
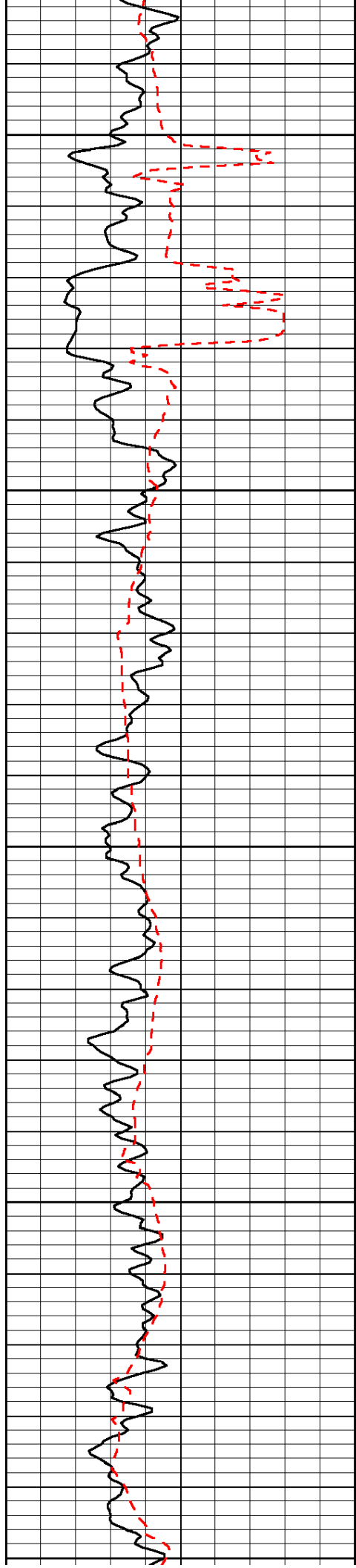
0	Gamma Ray	150	Sonic Int	140	Delta Time (usec/ft)	40
150	Gamma Ray	300	5	0	SPOR	-10
6	scal (GAPI)	16		15000	LTEN (lb)	0

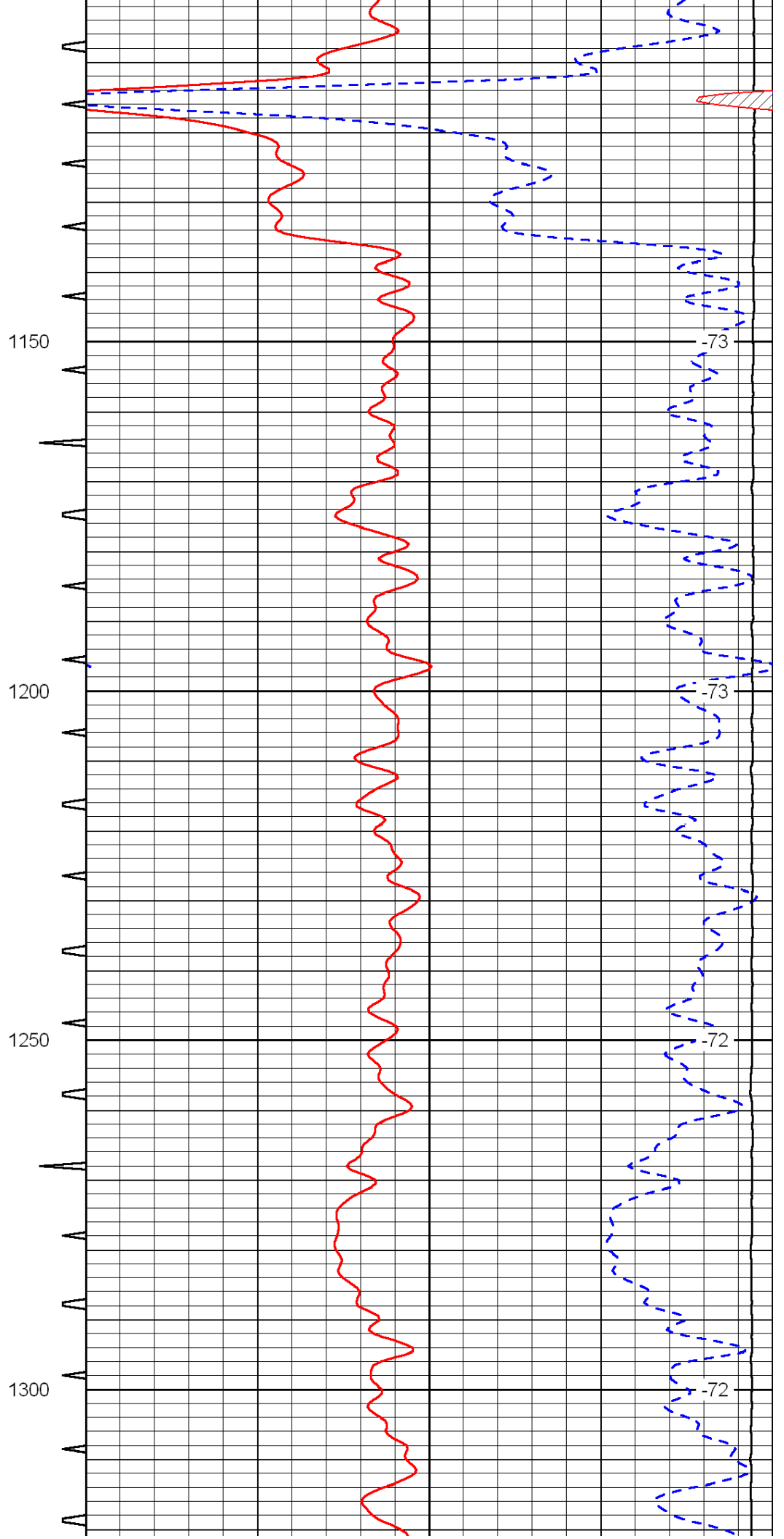
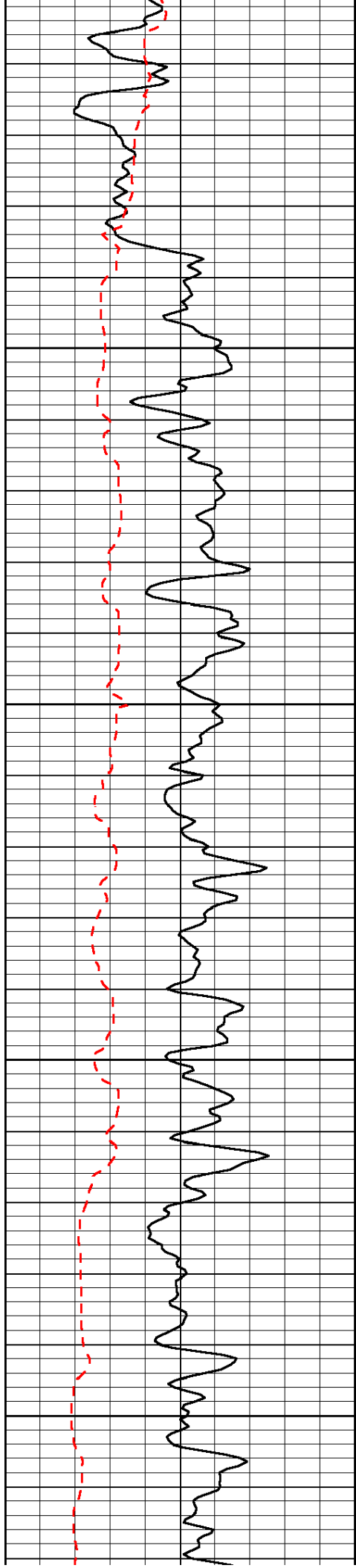
LSPD

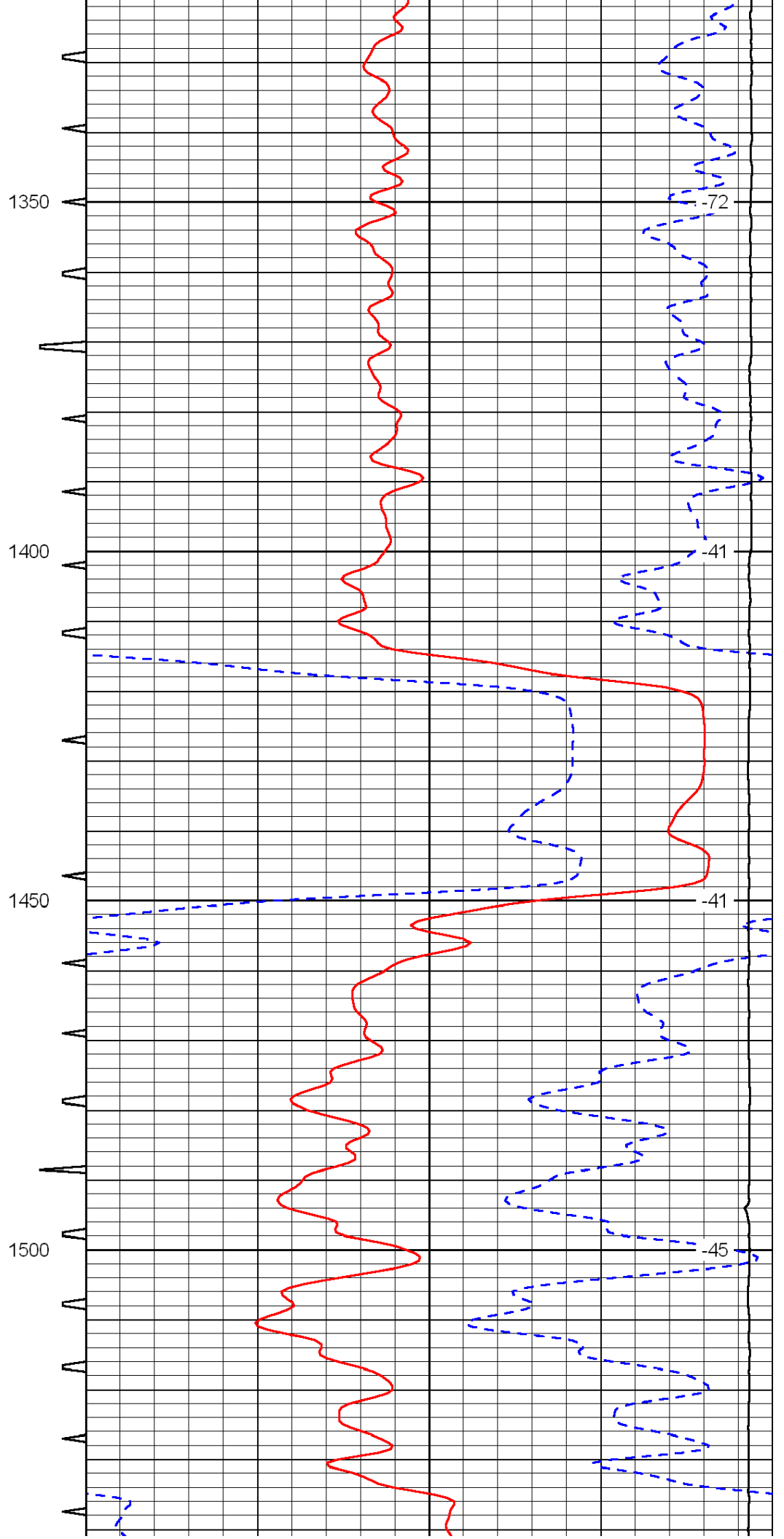
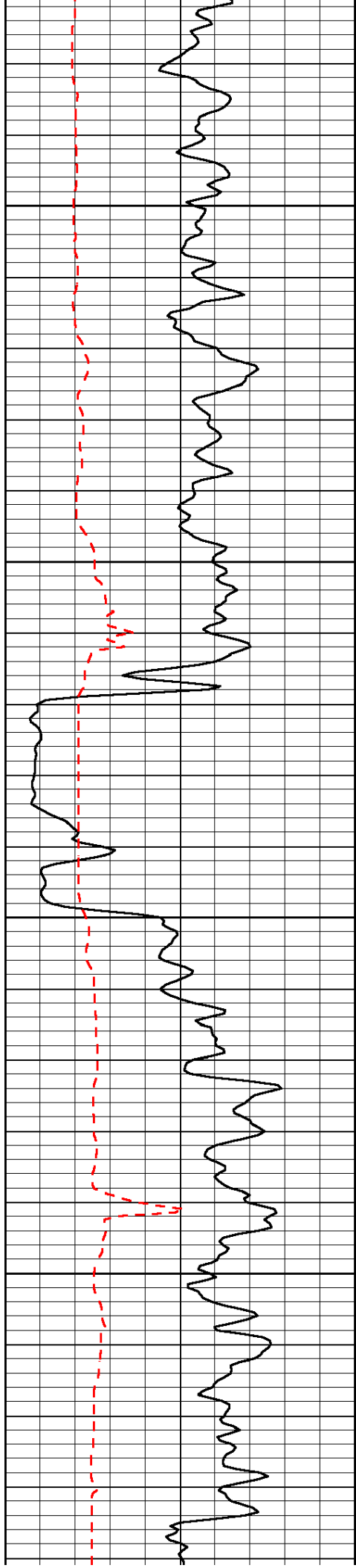


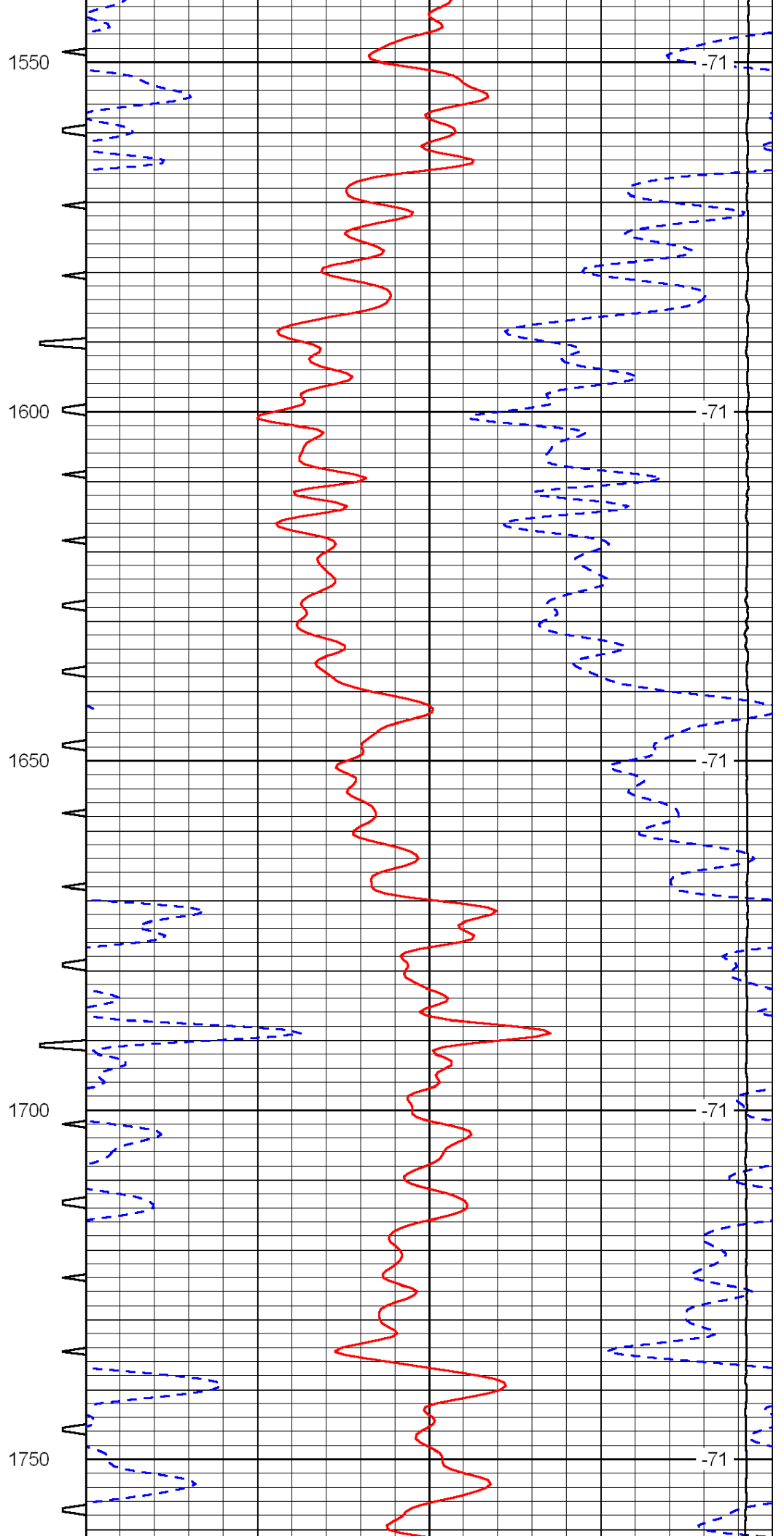
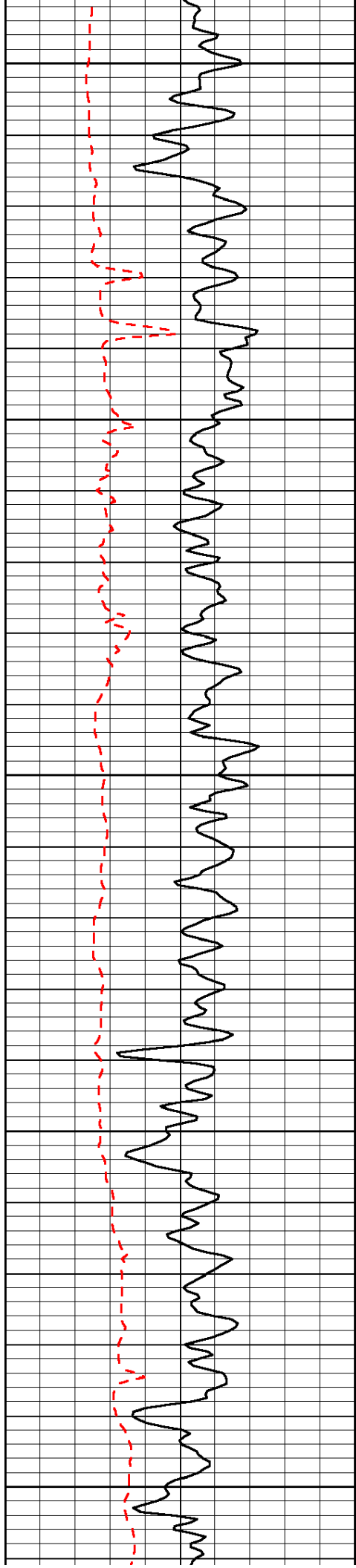


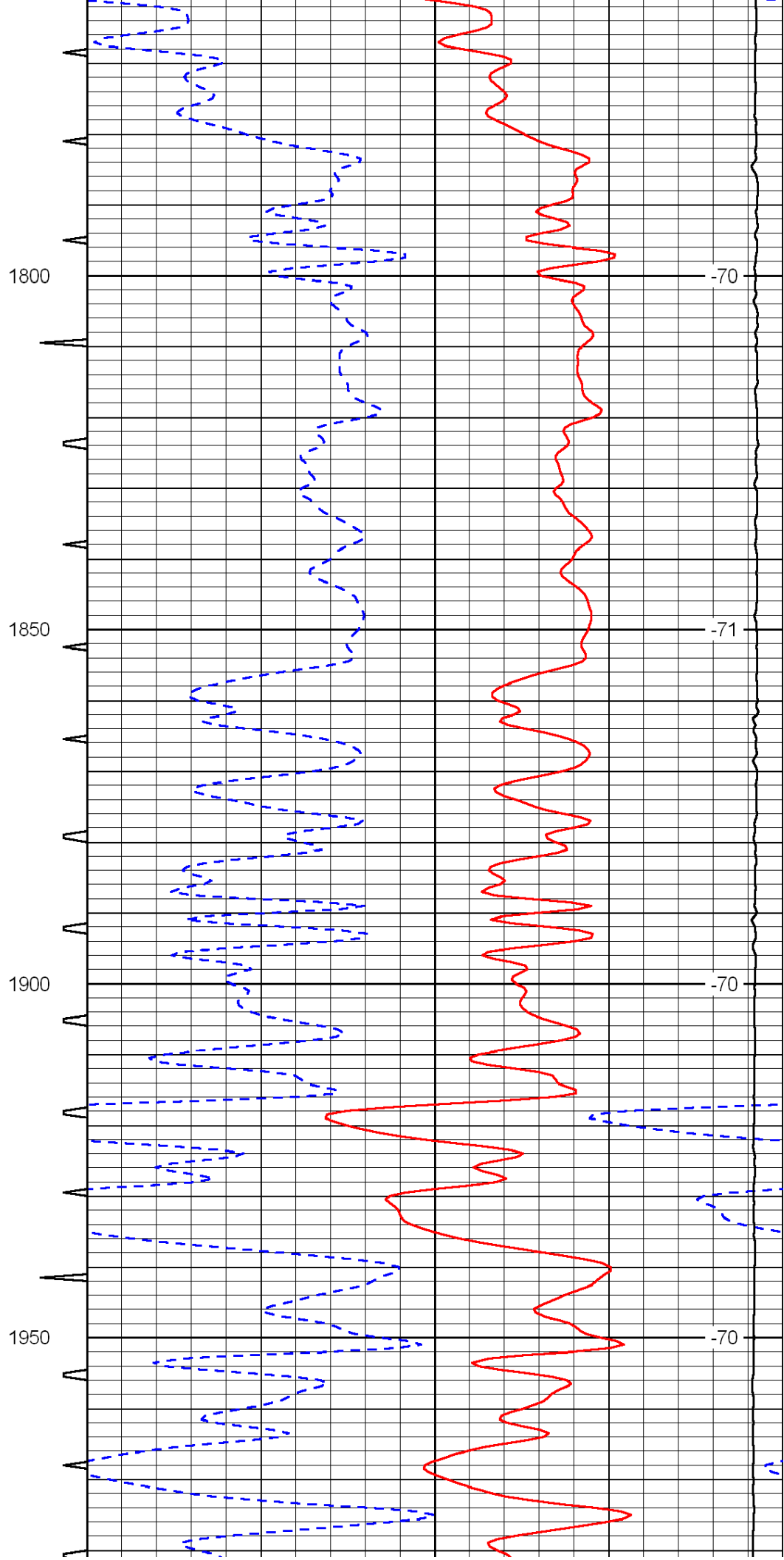
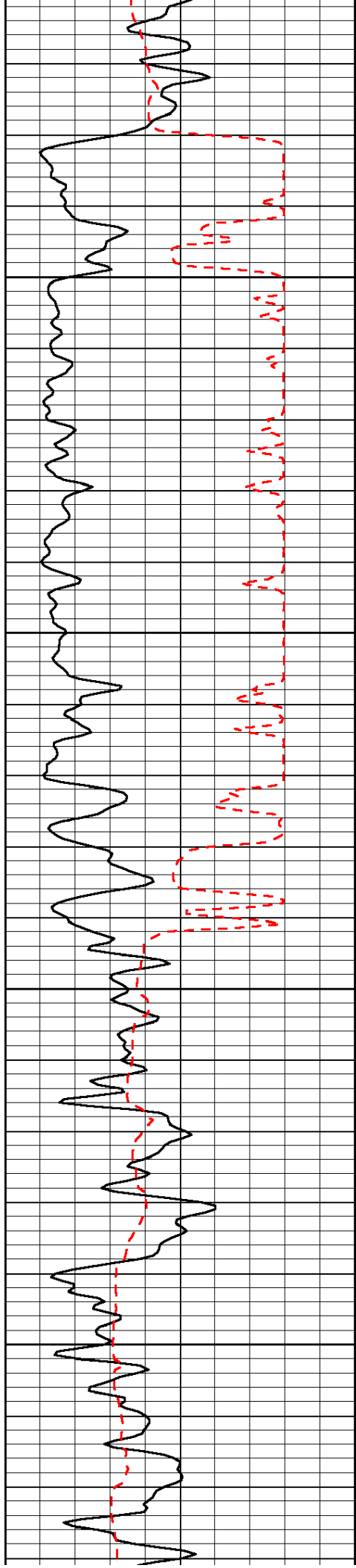


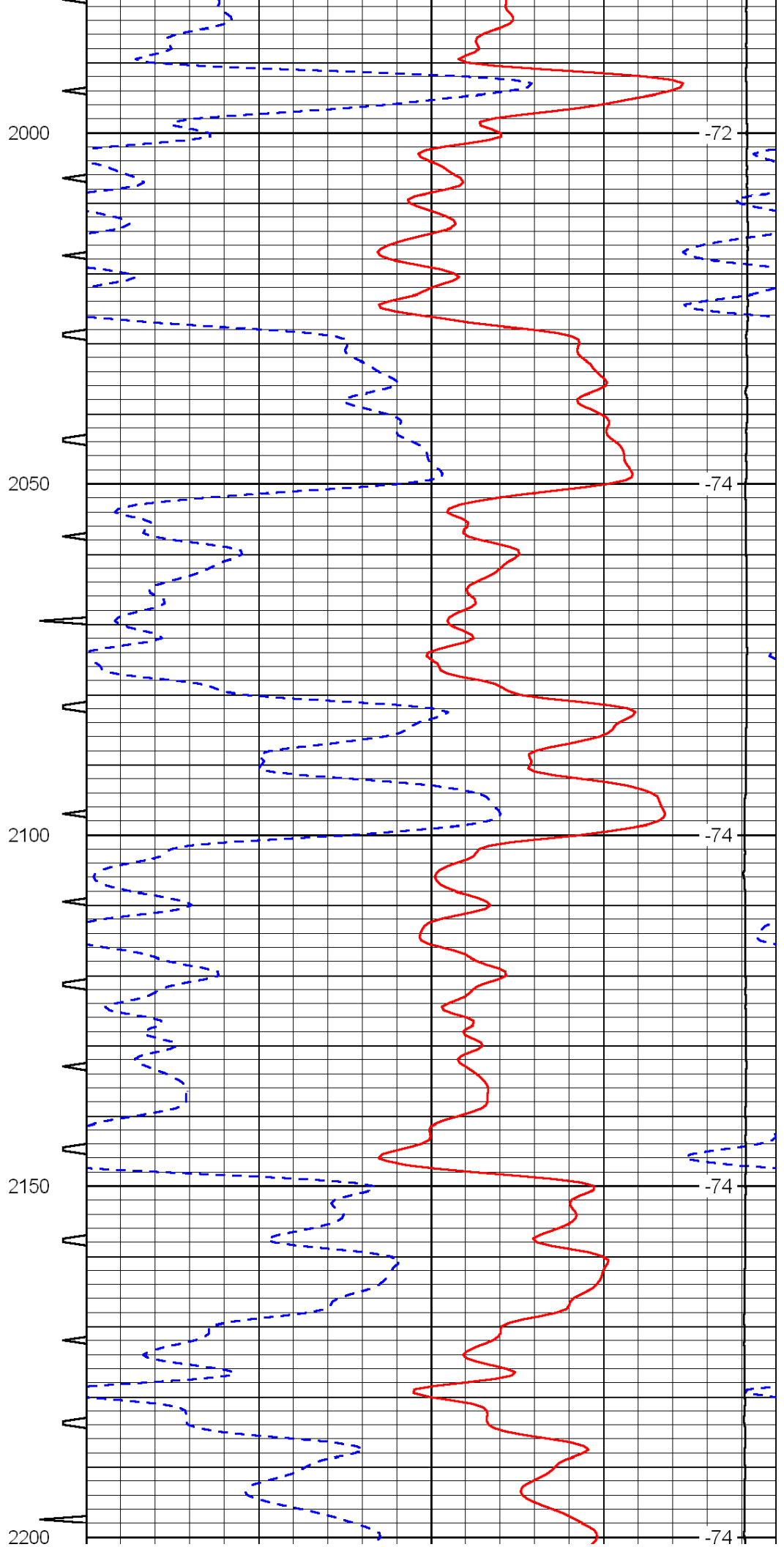
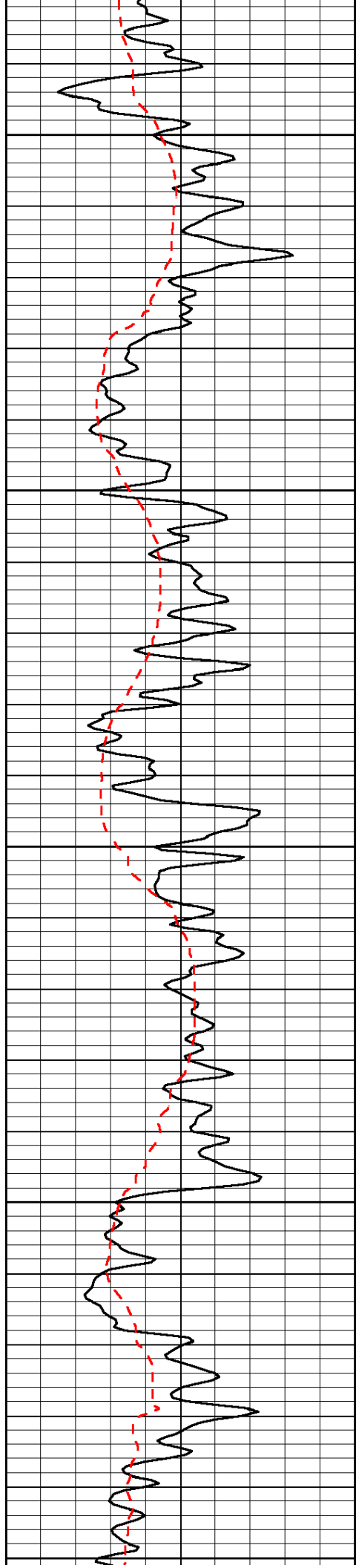


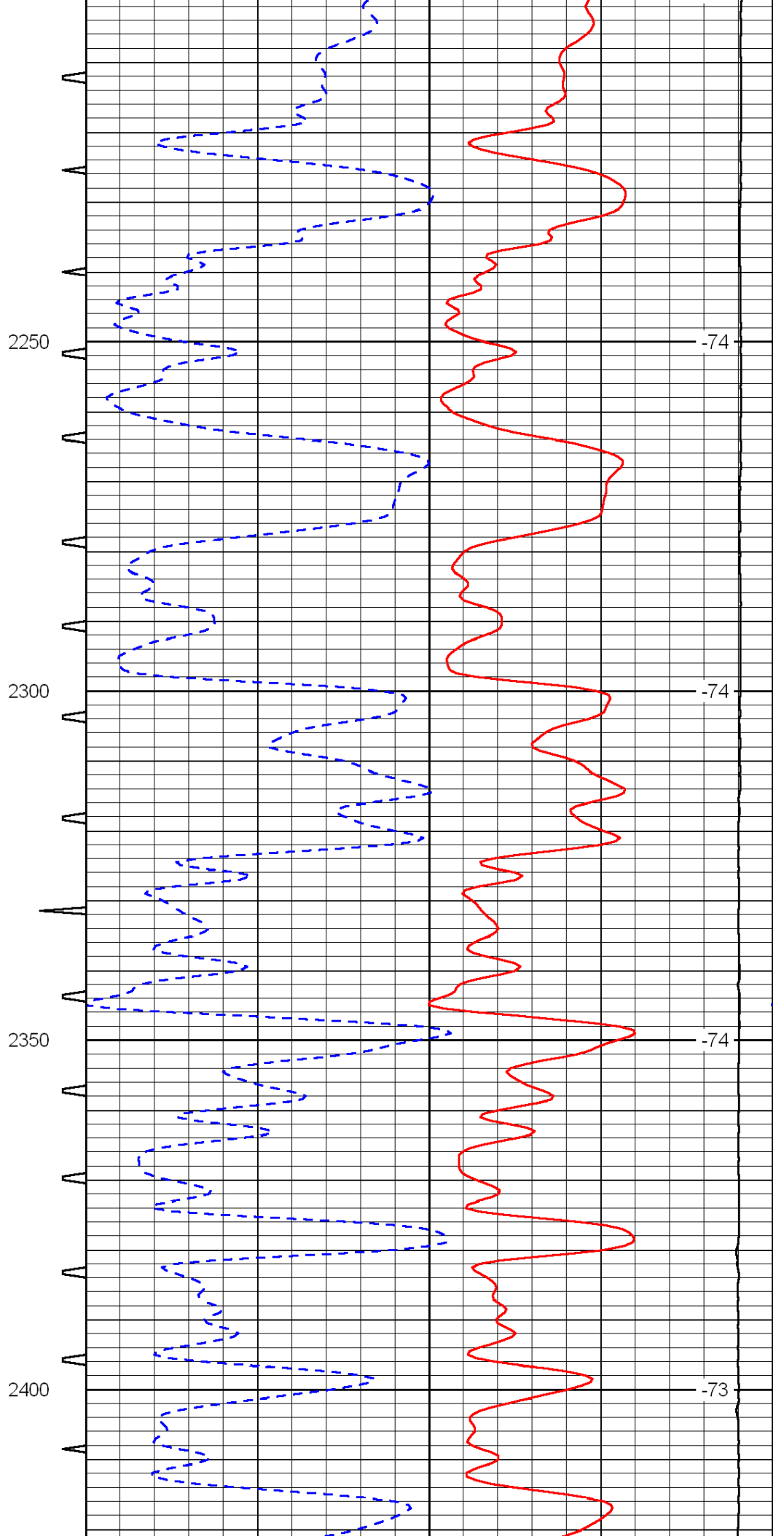
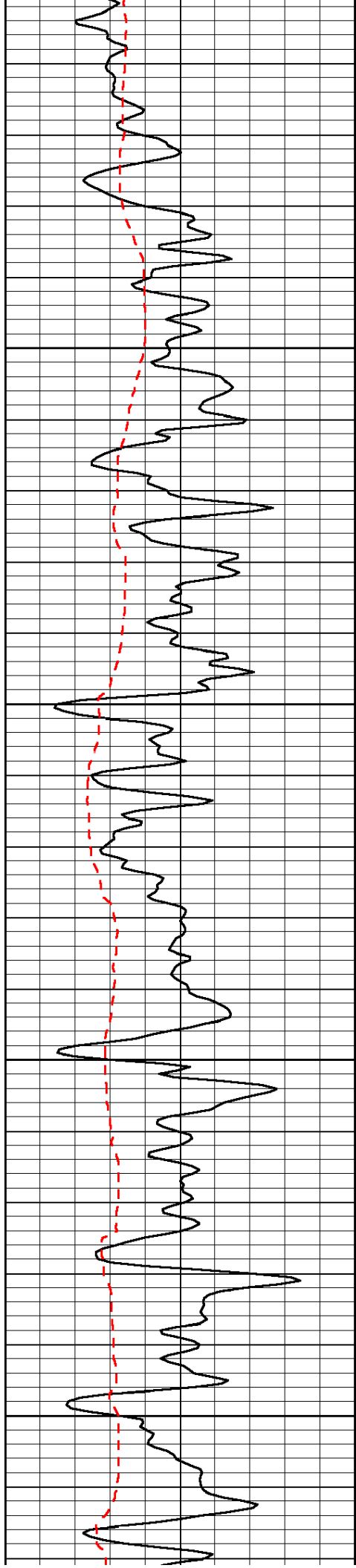


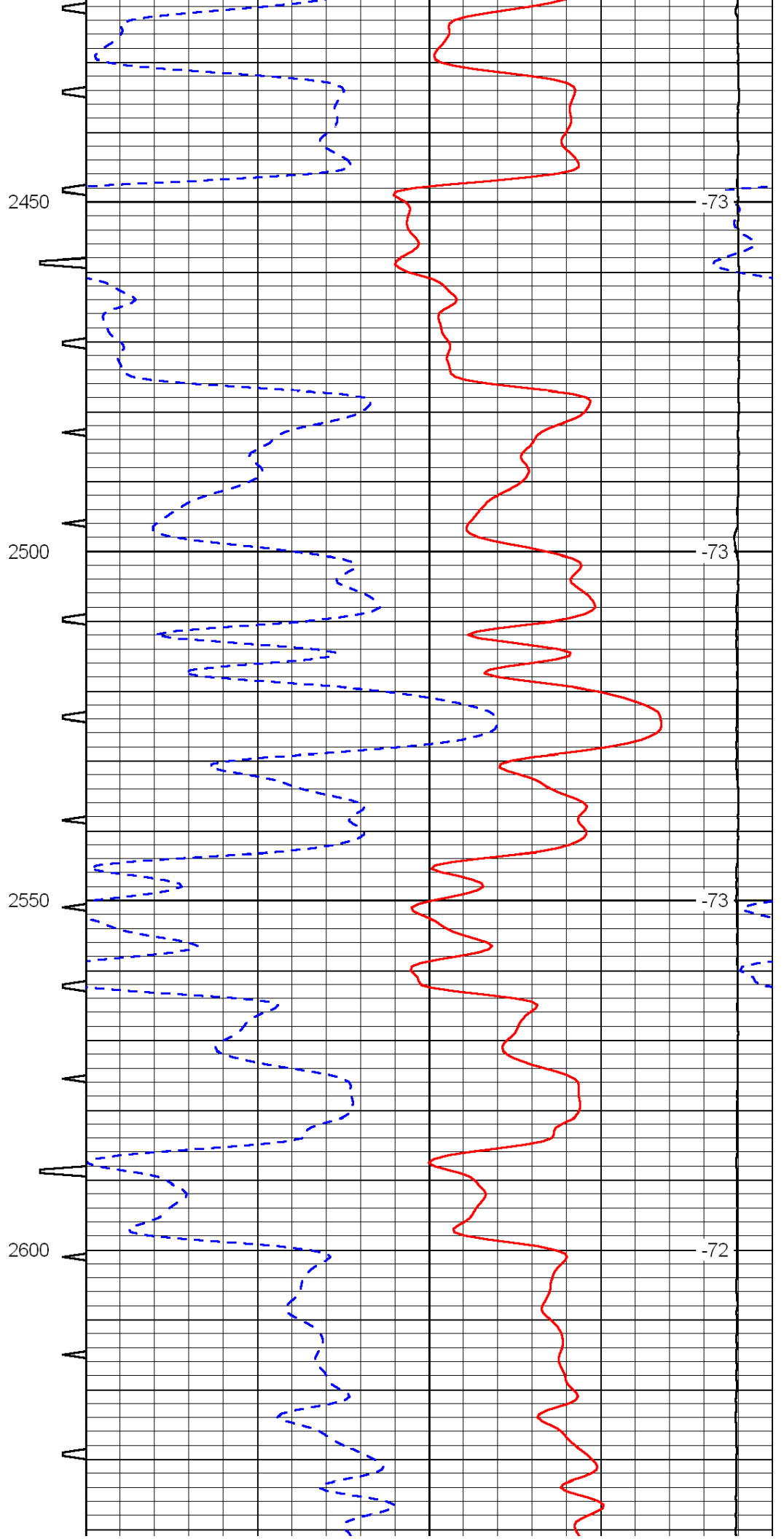
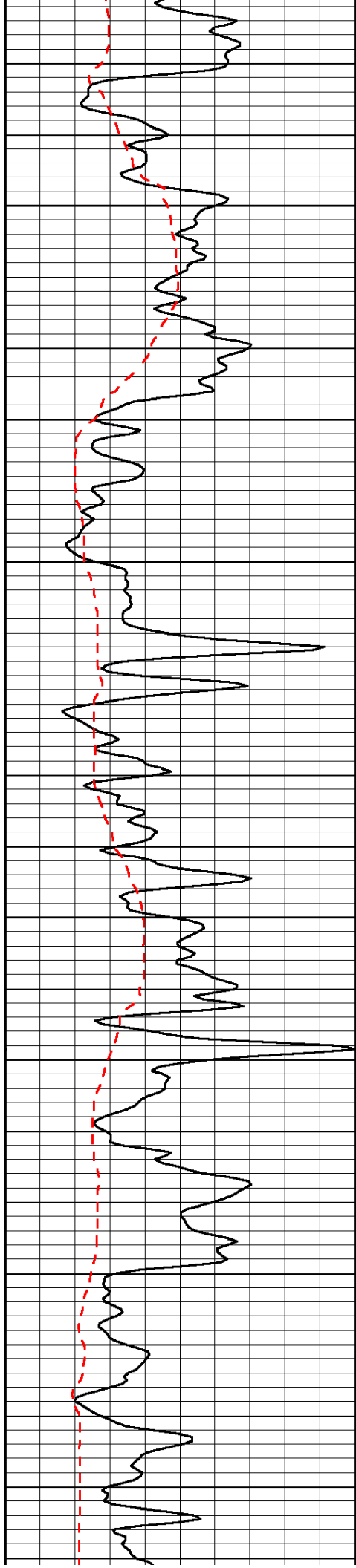


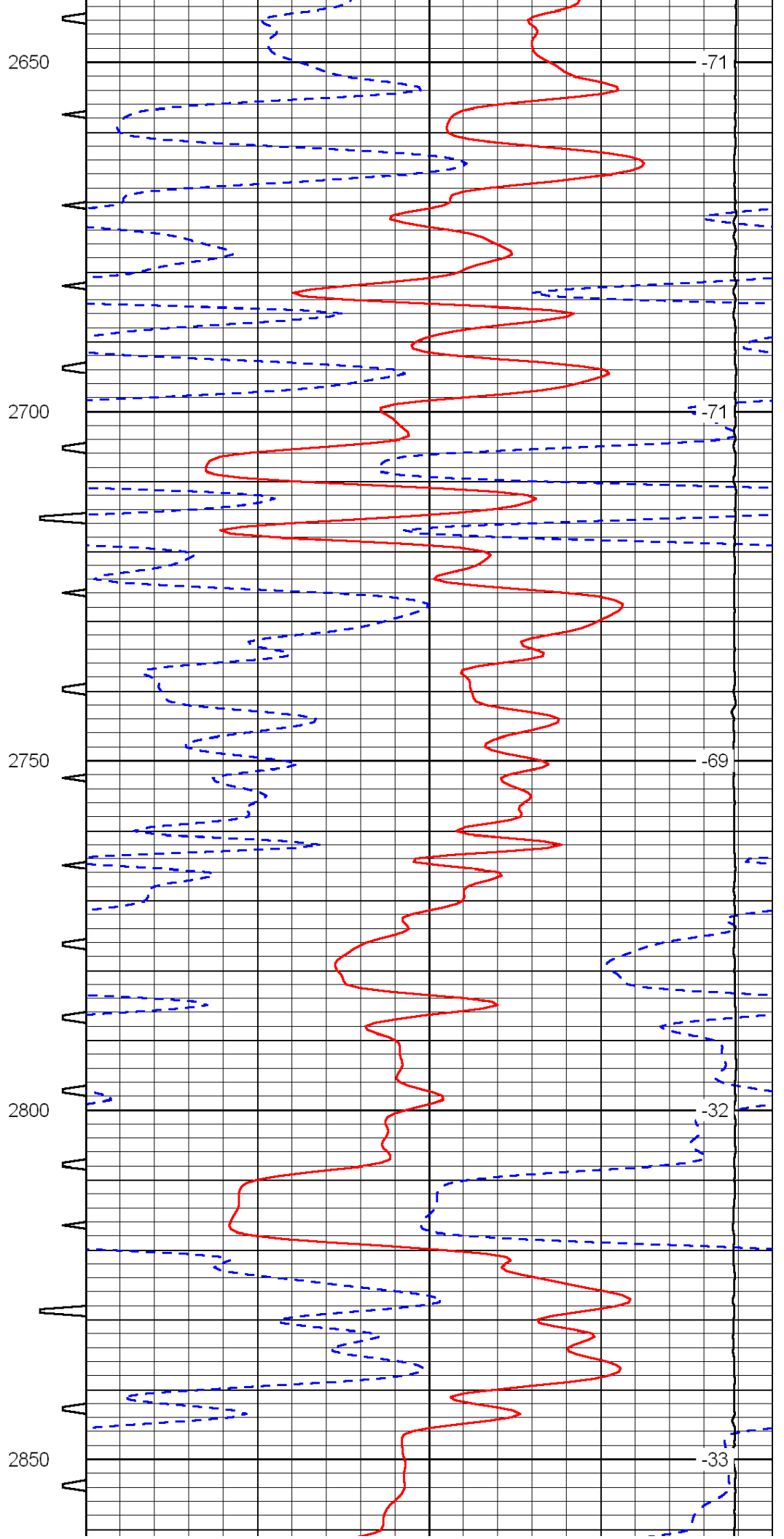
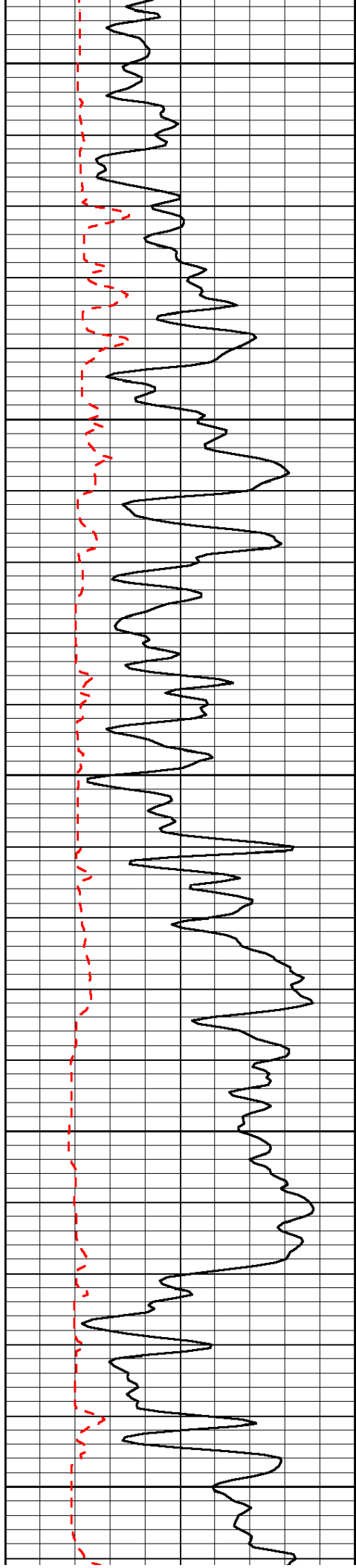


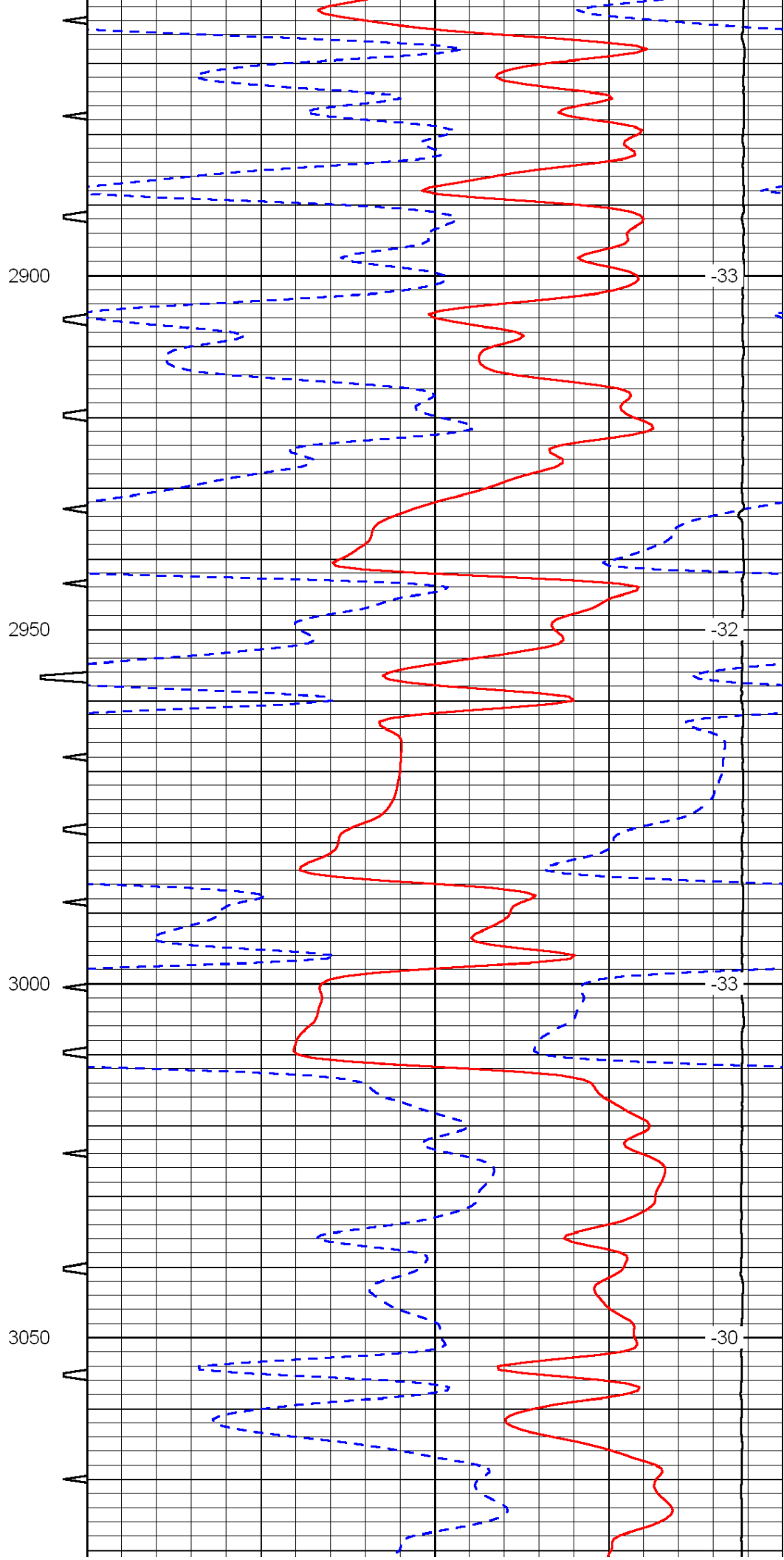
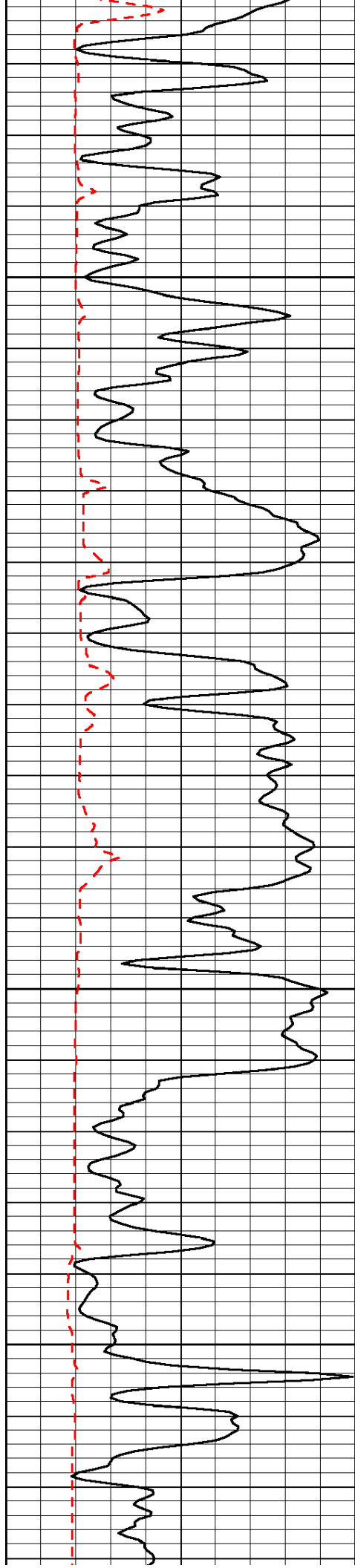


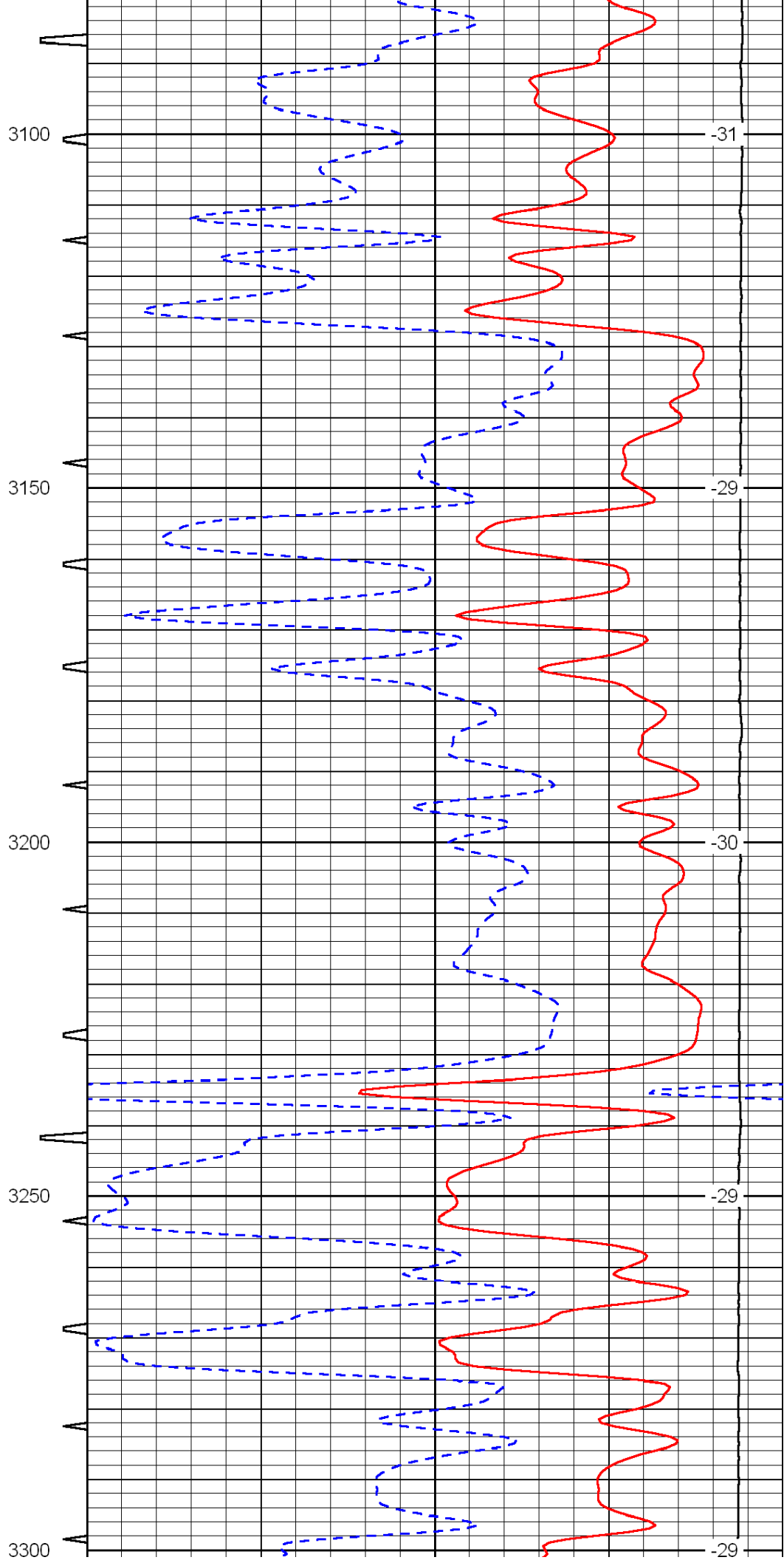
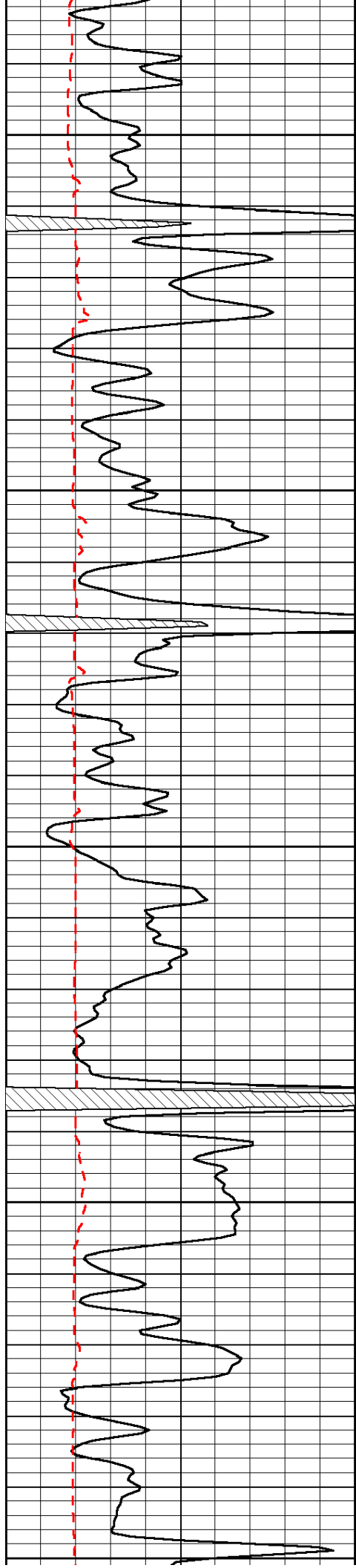


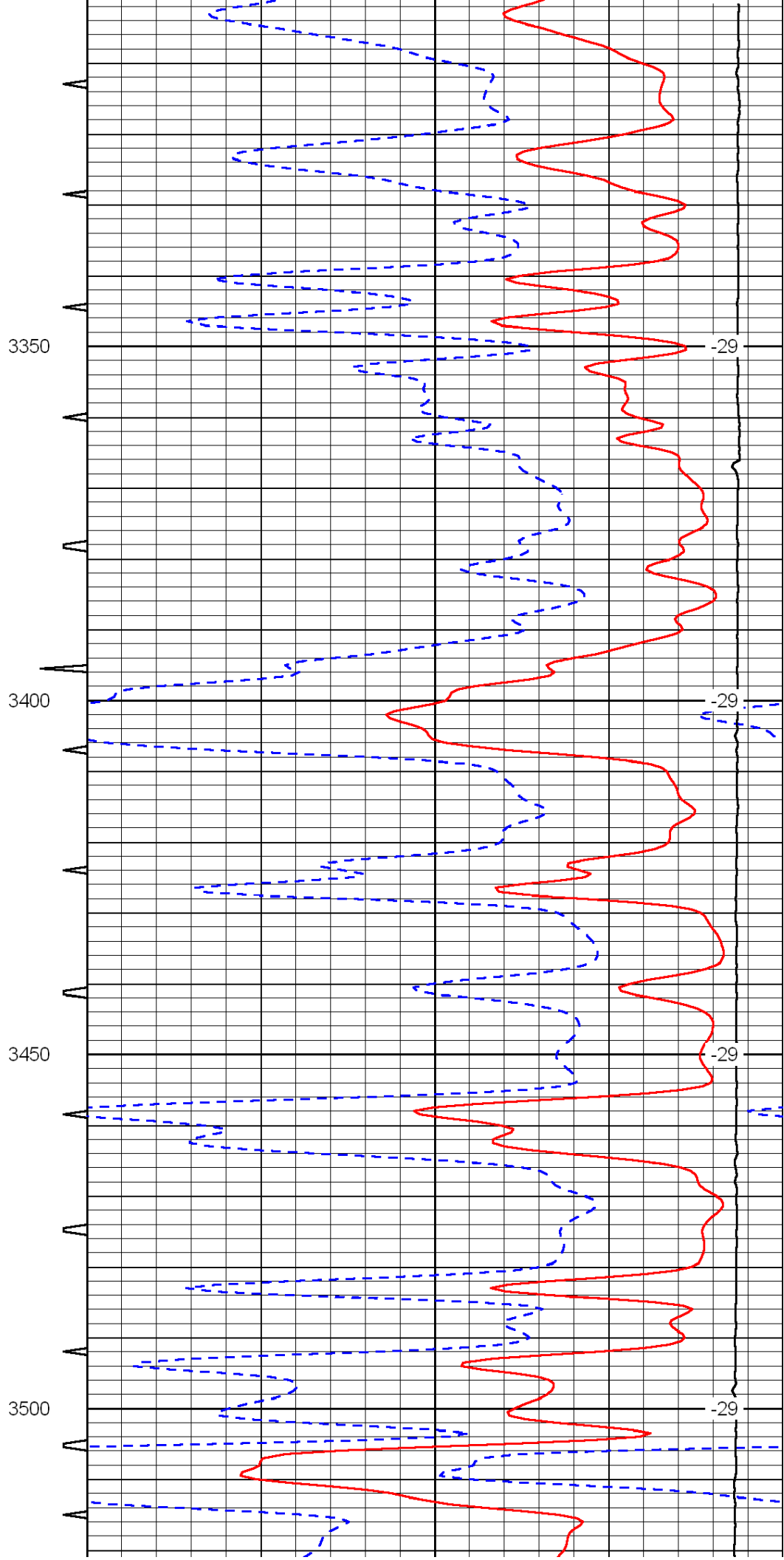
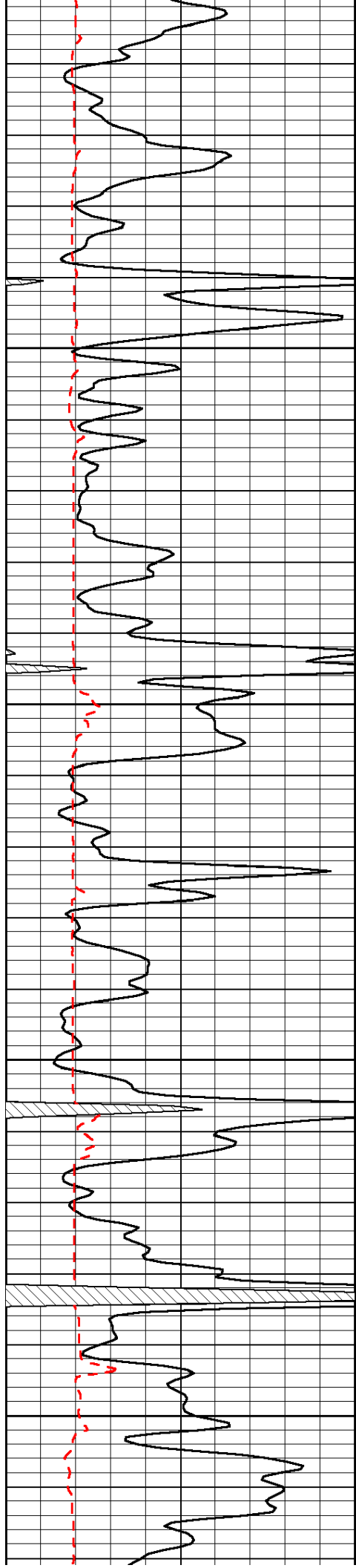


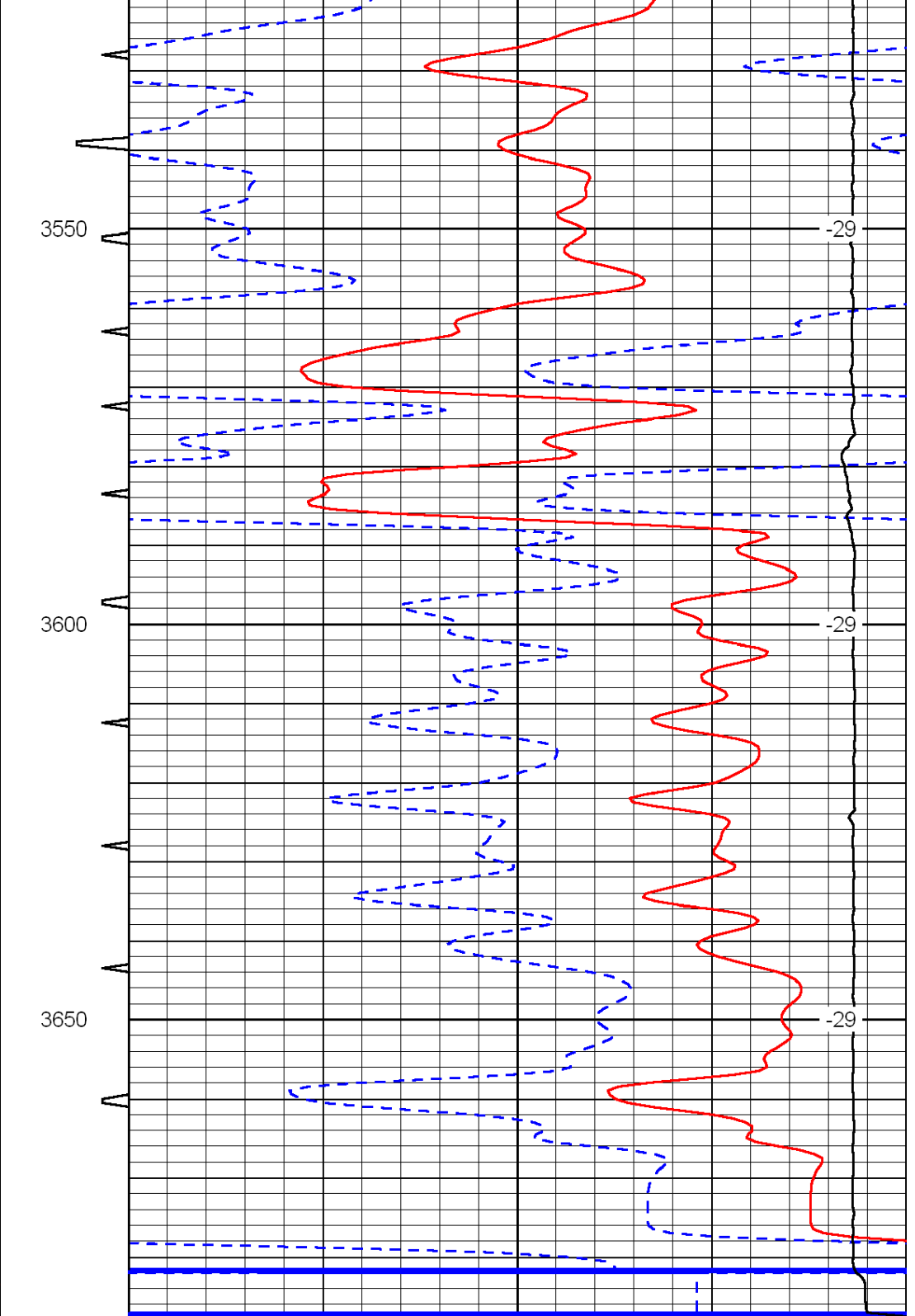
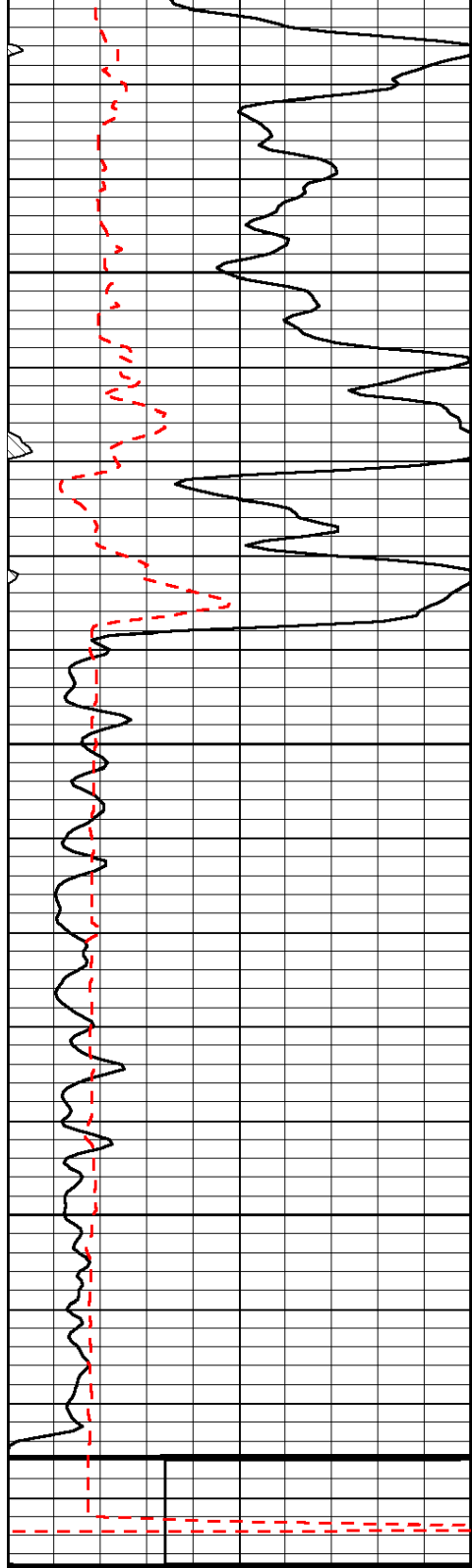












0	Gamma Ray	150	Sonic Int	140	Delta Time (usec/ft)	40
150	Gamma Ray	300	5	0	SPOR	-10
6	scal (GAPI)	16		15000	LTEN (lb)	0
LSPD						