



DIGITAL LOG (785) 625-3858

Microresistivity Log

API No.	15-051-26,034-00-00	
Company	Berecxco, LLC	
Well	Armbrister No. 1	
Field	Wildcat	
County	Elilis	State
Location	NW NW NE NE 65' FNL & 1,140' FEL	
Sec: 10	Twp: 11S	Rge: 19W
Other Services	RAG BHCS	

Permanent Datum	Ground Level	Elevation 2063
Log Measured From	Kelly Bushing	11 Ft. Above Perm. Datum
Drilling Measured From	Kelly Bushing	
Date	10/8/2010	

Run Number	Two
Depth Driller	3680
Depth Logger	3681
Bottom Logged Interval	3680
Top Log Interval	2800
Casing Driller	8.625 @ 283
Casing Logger	283
Bit Size	7.875
Type Fluid in Hole	Chemical
Salinity, ppm CL	8000
Density / Viscosity	9.1 51
pH / Fluid Loss	10.0 10.2
Source of Sample	Flowline
Rm @ Meas. Temp	.34 @ 72
Rmf @ Meas. Temp	.26 @ 72
Rmc @ Meas. Temp	.46 @ 72
Source of Rmf / Rmc	Charts
Rm @ BHT	.22 @ 113
Operating Rig Time	4 Hours
Max Rec. Temp. F	113
Equipment Number	10
Location	Hays
Recorded By	J. Long
Witnessed By	Bryan Bynog

<<< Fold Here >>>

All interpretations are opinions based on inferences from electrical or other measurements and we cannot and do not guarantee the accuracy or correctness of any interpretation, and we shall not, except in the case of gross or willful negligence on our part, be liable or responsible for any loss, costs, damages, or expenses incurred or sustained by anyone resulting from any interpretation made by any of our officers, agents or employees. These interpretations are also subject to our general terms and conditions set out in our current Price Schedule.

Comments

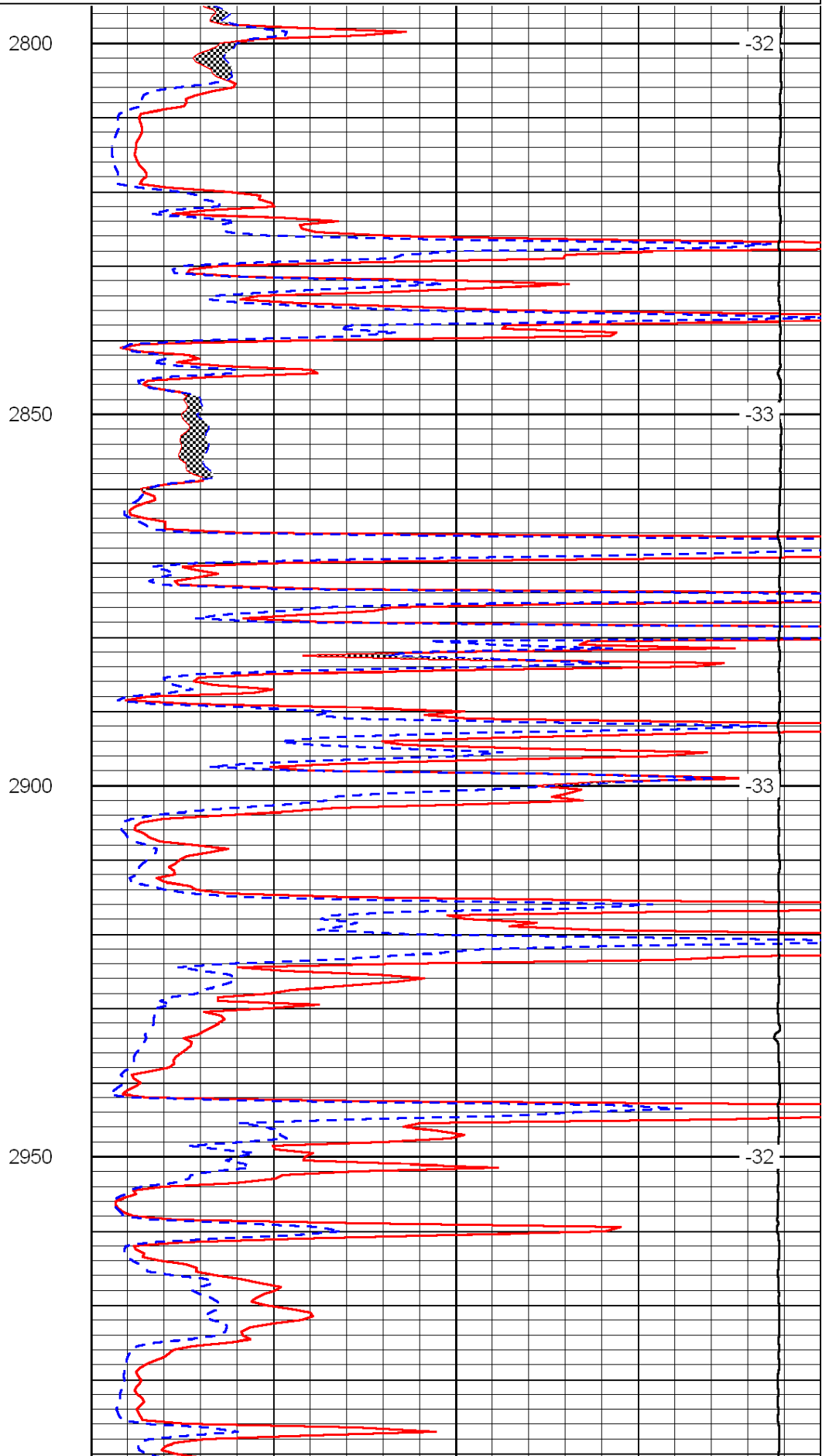
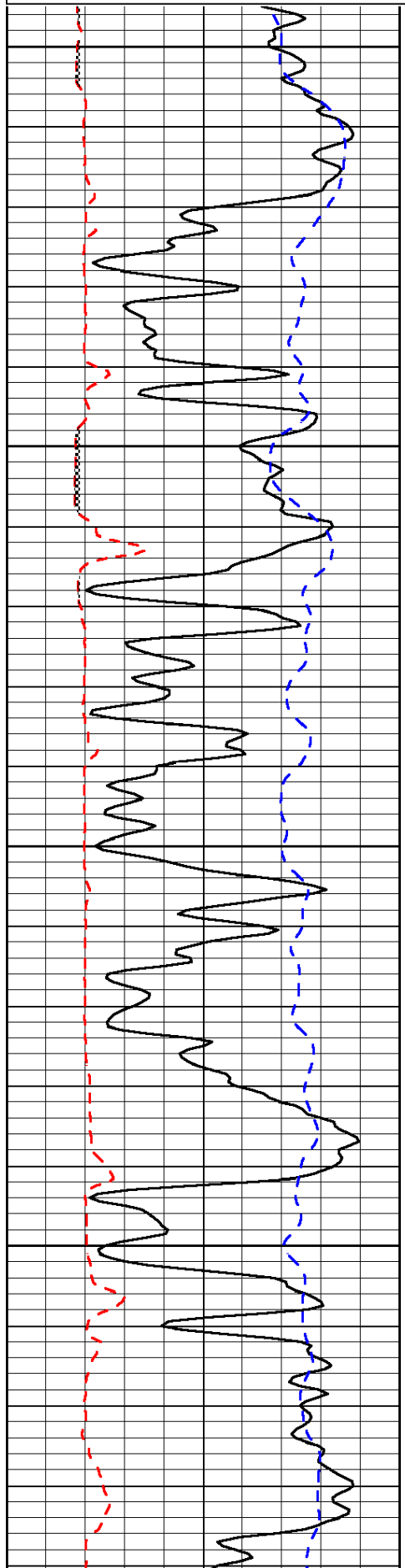
Thank you for using Log-Tech, Inc.
(785) 625-3858

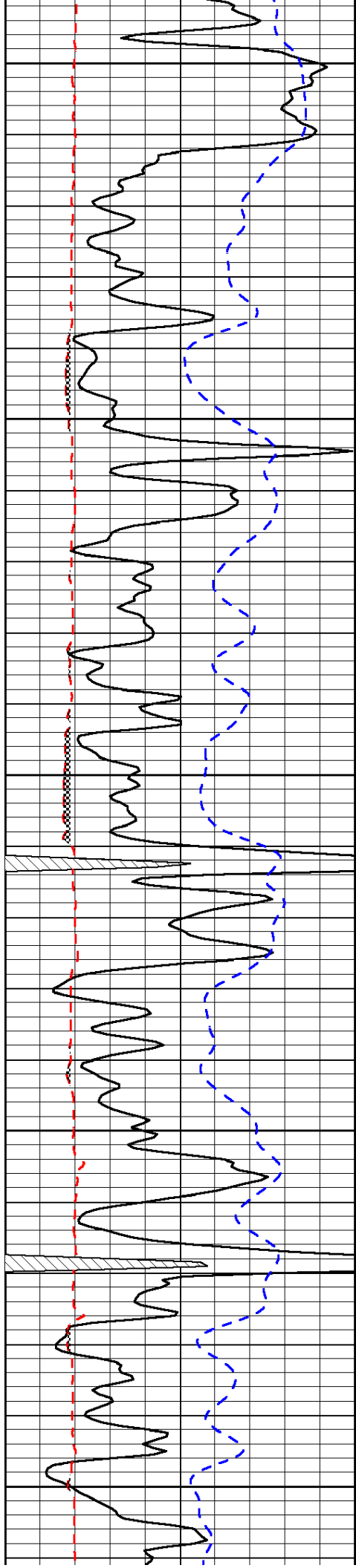
Hays, North to Saline River Rd, 6 West to 200 Rd, 1 North, West Into

0	Gamma Ray	150
6	Micro Log Caliper (GAPI)	16
-200	SP (mV)	0

0	Micro Inverse 1 X 1	40
0	Micro Normal 2"	40
15000	Line Weight	0

LSPD





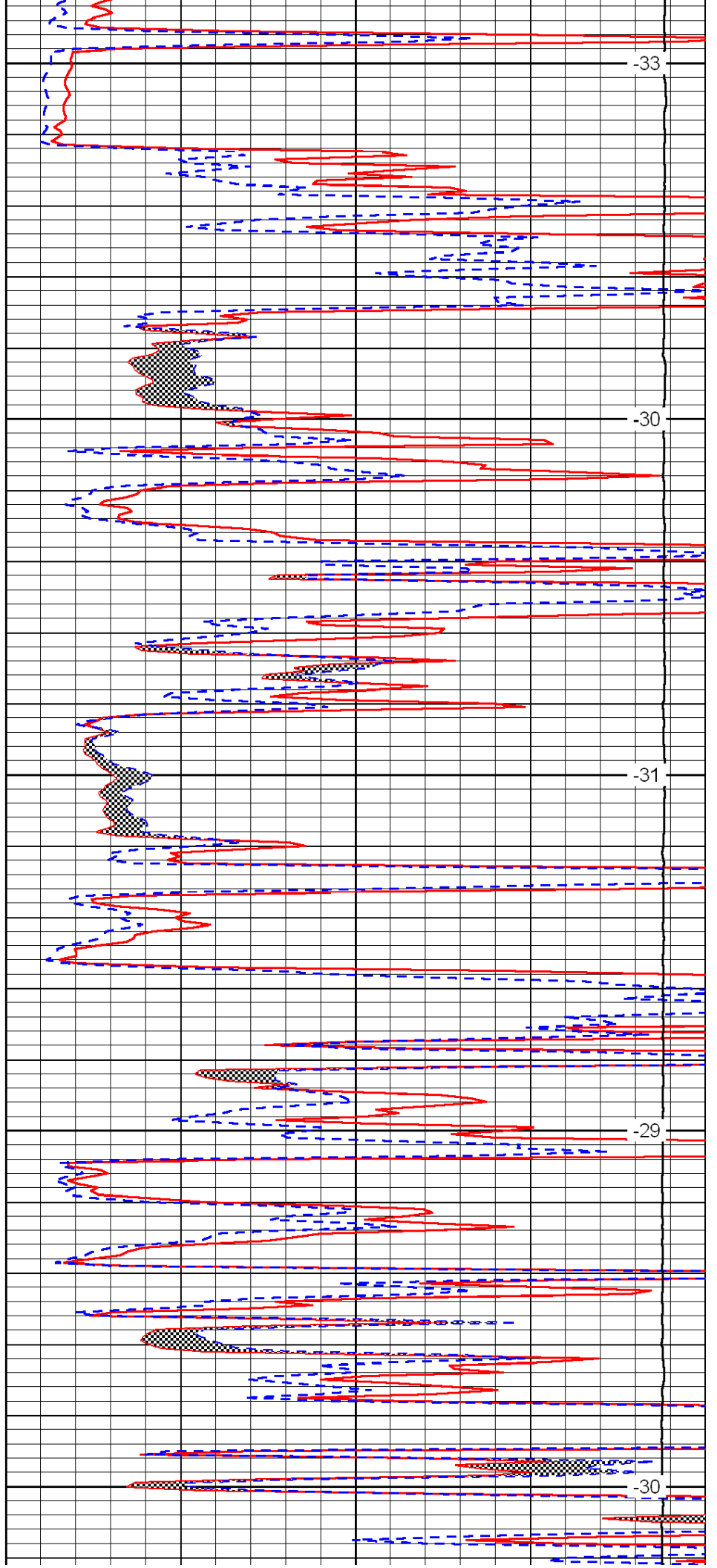
3000

3050

3100

3150

3200



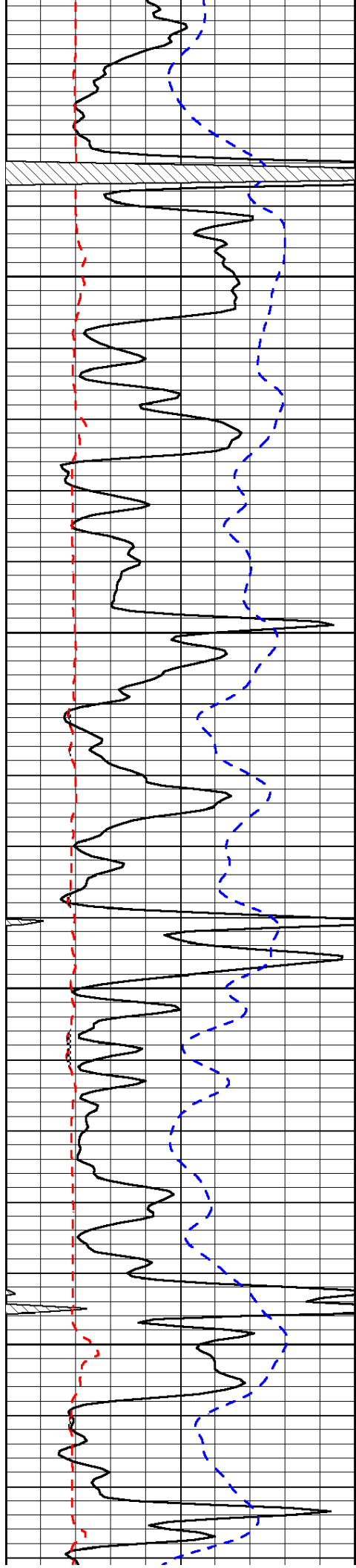
-33

-30

-31

-29

-30

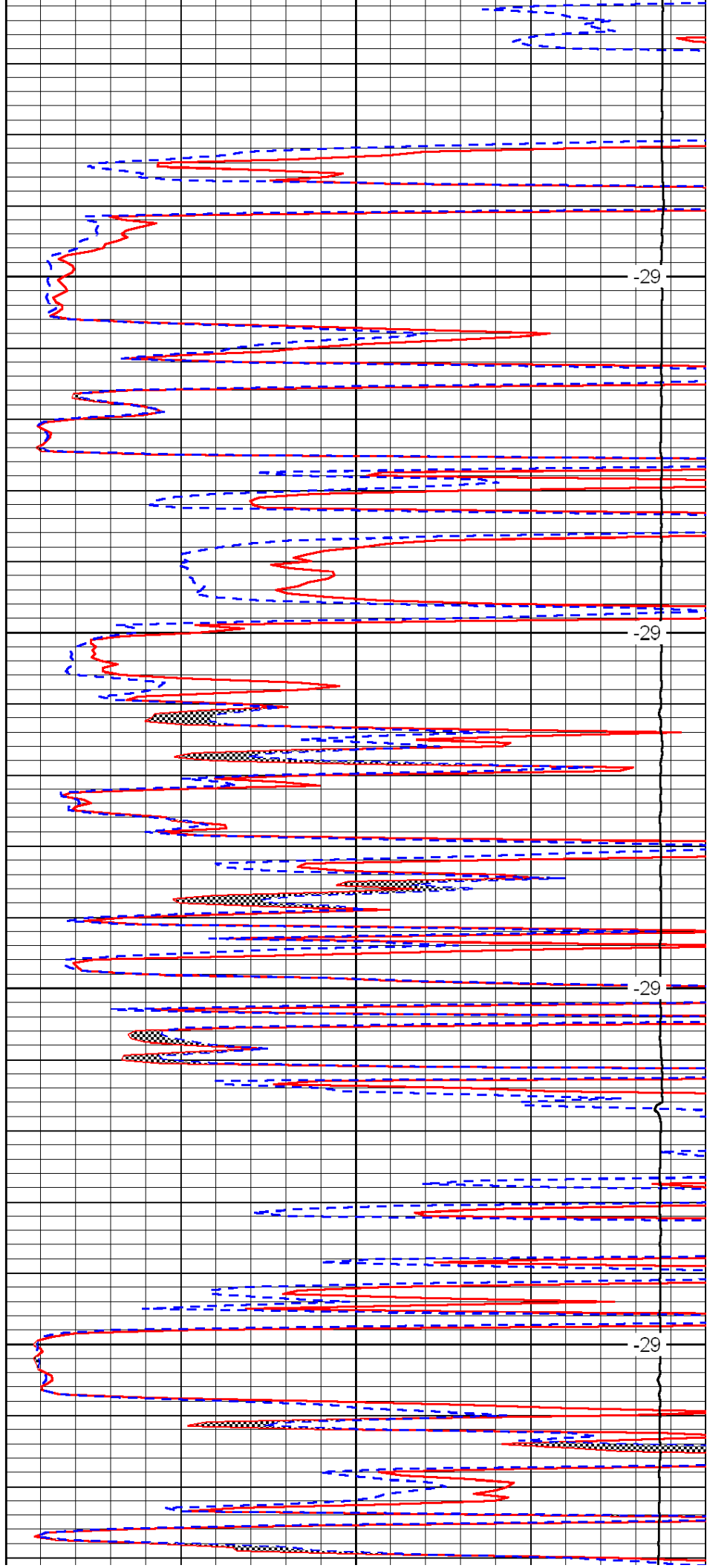


3250

3300

3350

3400

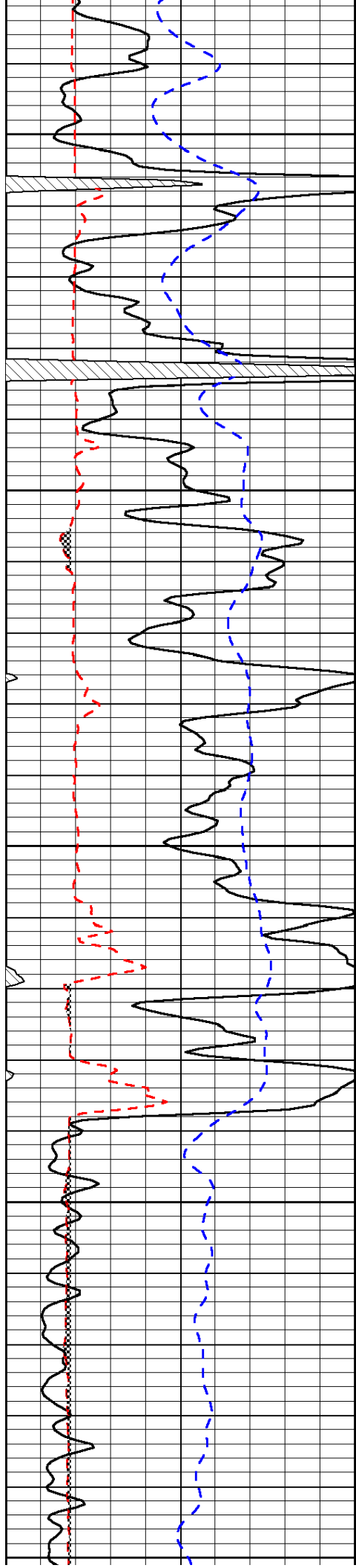


-29

-29

-29

-29



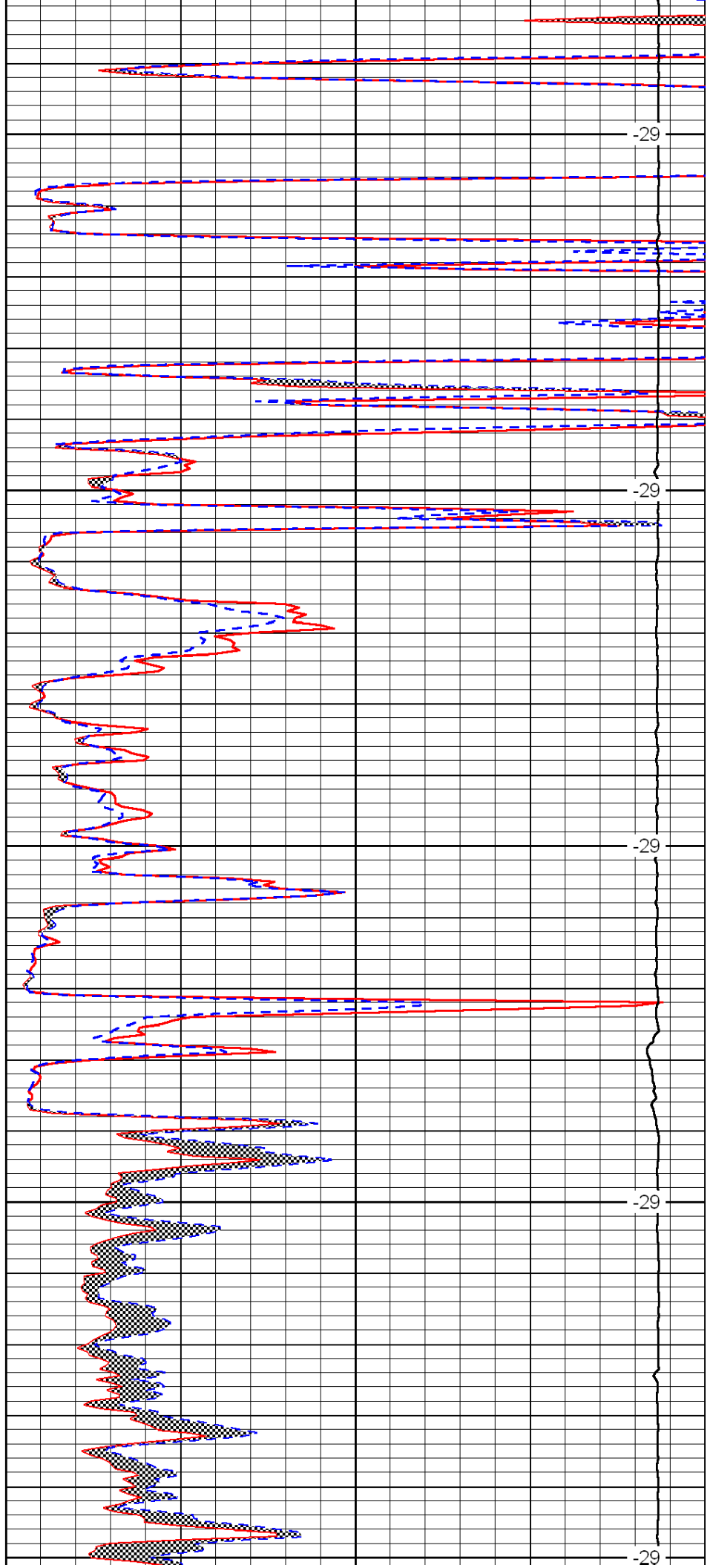
3450

3500

3550

3600

3650



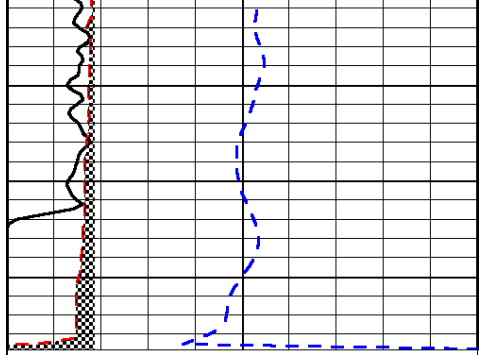
-29

-29

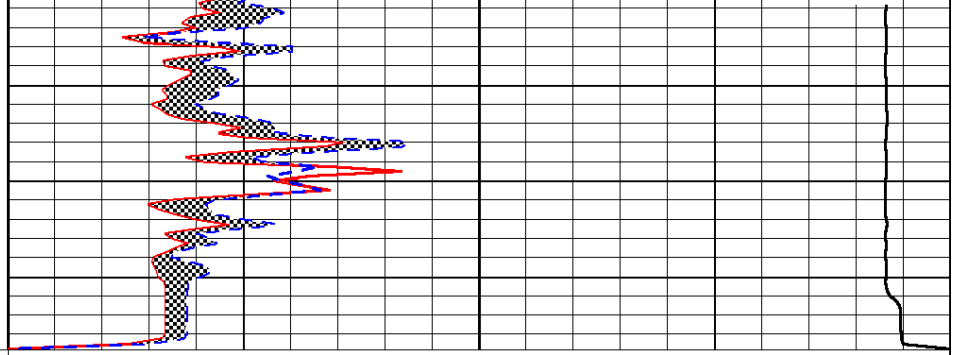
-29

-29

-29



0	Gamma Ray	150
6	Micro Log Caliper (GAPI)	16
-200	SP (mV)	0



0	Micro Inverse 1 X 1	40
0	Micro Normal 2''	40
15000	Line Weight	0

LSPD