



**COMPLETION
& PRODUCTION
SERVICES CO.**

**DUAL INDUCTION
LOG**

Company	DIXON ENERGY, INC.	Location:	API # : 15-095-22264-0000	Other Services CDL/CNL/PE MEL
Well	ROLF LAND #4	SEC 18 TWP 30S RGE 10W		Elevation
Field	BARKIN	330' FSL & 3300' FEL		K.B. 1795
County	KINGMAN			D.F. 1793
State	KANSAS			G.L. 1785
Permanent Datum	GROUND LEVEL	Elevation	1785	
Log Measured From	KELLY BUSHING 10' A.G.L.			
Drilling Measured From	KELLY BUSHING			

Date	10/3/12
Run Number	ONE
Depth Driller	4780
Depth Logger	4776
Bottom Logged Interval	4774
Top Log Interval	00
Casing Driller	8 5/8"@238'
Casing Logger	234
Bit Size	7 7/8"
Type Fluid in Hole	CHEMICAL MUD
Density / Viscosity	9.166
pH / Fluid Loss	10.0/10.0
Source of Sample	FLOWLINE
Rm @ Meas. Temp	.800@86F
Rmt @ Meas. Temp	.600@86F
Rmc @ Meas. Temp	.960@86F
Source of Rmf / Rmc	MEASUREMENT
Rm @ BHT	.559@123F
Time Circulation Stopped	3 HOURS
Time Logger on Bottom	11:30 A.M.
Maximum Recorded Temperature	123F
Equipment Number	4010
Location	HAYS, KANSAS
Recorded By	JEFF LUEBBERS
Witnessed By	RYAN DIXON

<<< Fold Here >>>

All interpretations are opinions based on inferences from electrical or other measurements and we cannot and do not guarantee the accuracy or correctness of any interpretation, and we shall not, except in the case of gross or willful negligence on our part, be liable or responsible for any loss, costs, damages, or expenses incurred or sustained by anyone resulting from any interpretation made by any of our officers, agents or employees. These interpretations are also subject to our general terms and conditions set out in our current Price Schedule.

Comments

THANK YOU FOR USING "NABORS" HAYS, KANSAS (785) 628-6395
DIRECTIONS
NASHVILLE, KS., W. OF TOWN ON HWY 42 TO CURVE. 1S. TO "CEMETARY", 1 1/2W., N. INTO THEN
BACK EAST



MAIN SECTION

Database File: 409687pe.db
 Dataset Pathname: pass3.7
 Presentation Format: dil2
 Dataset Creation: Wed Oct 03 14:02:46 2012
 Charted by: Depth in Feet scaled 1:600

0	Gamma Ray (GAPI)	150
-100	SP (mV)	100

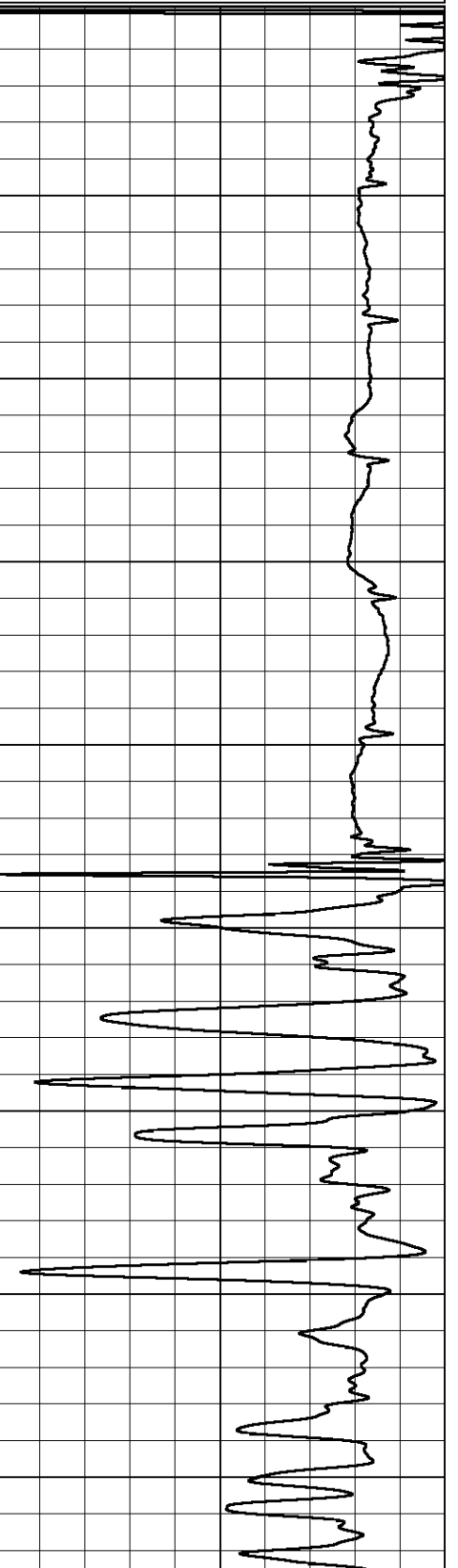
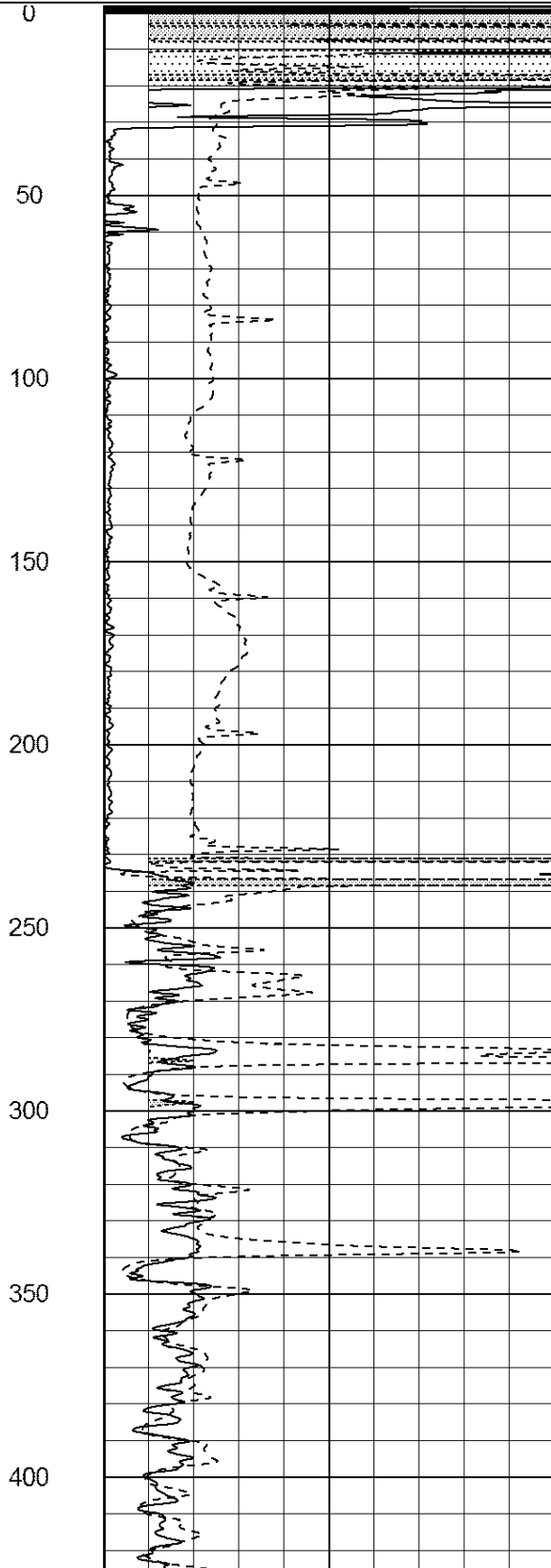
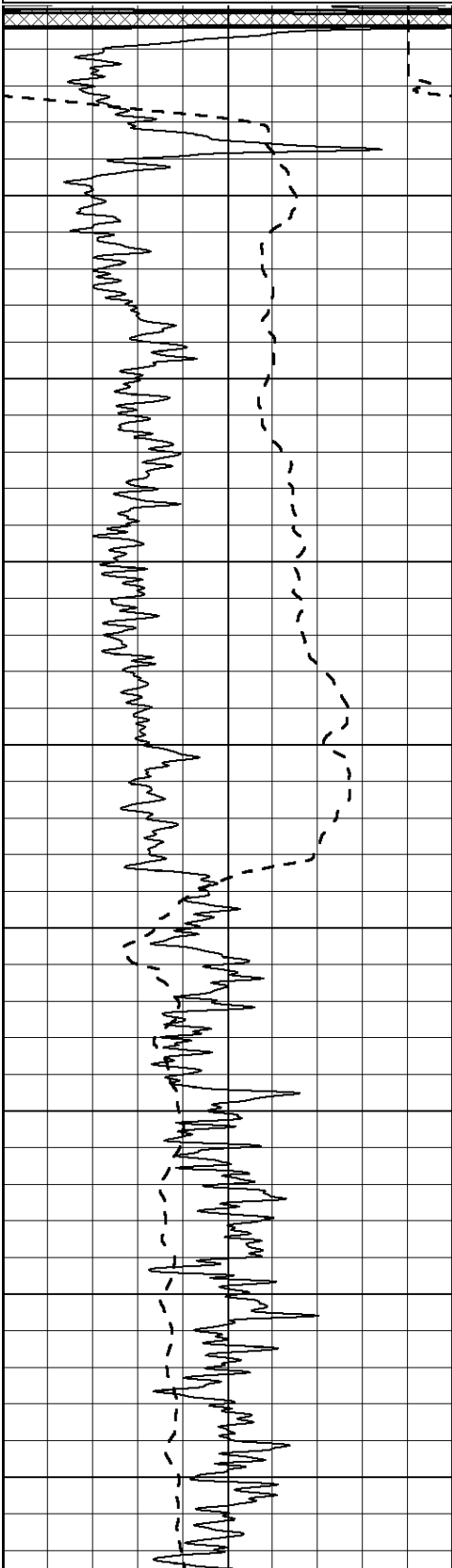
0	RLL3 (Ohm-m)	50
---	--------------	----

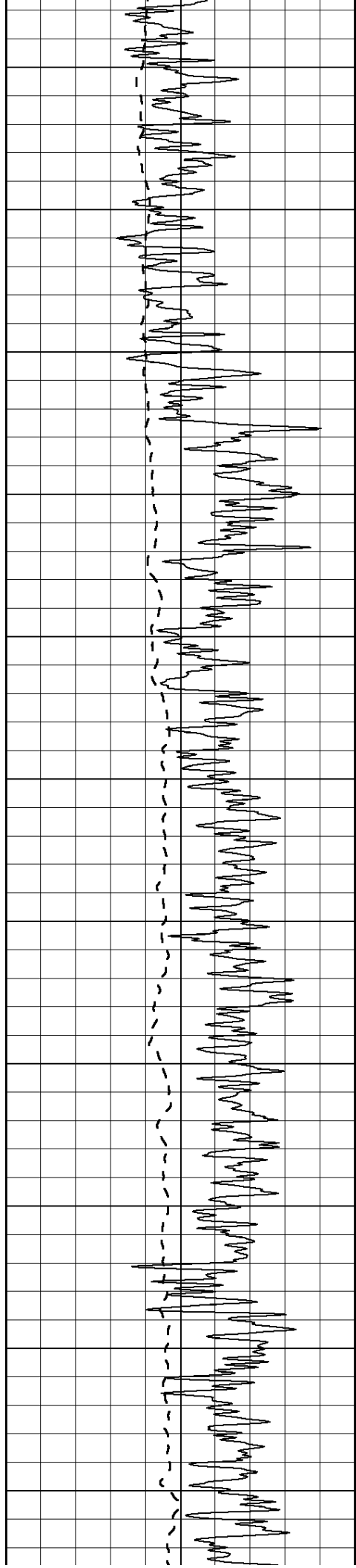
0	RILD (Ohm-m)	50
---	--------------	----

1000	CILD (mmho/m)	0
------	---------------	---

50	RILD X10 (Ohm-m)	500
----	------------------	-----

50	RLL3 X10 (Ohm-m)	500
----	------------------	-----





450

500

550

600

650

700

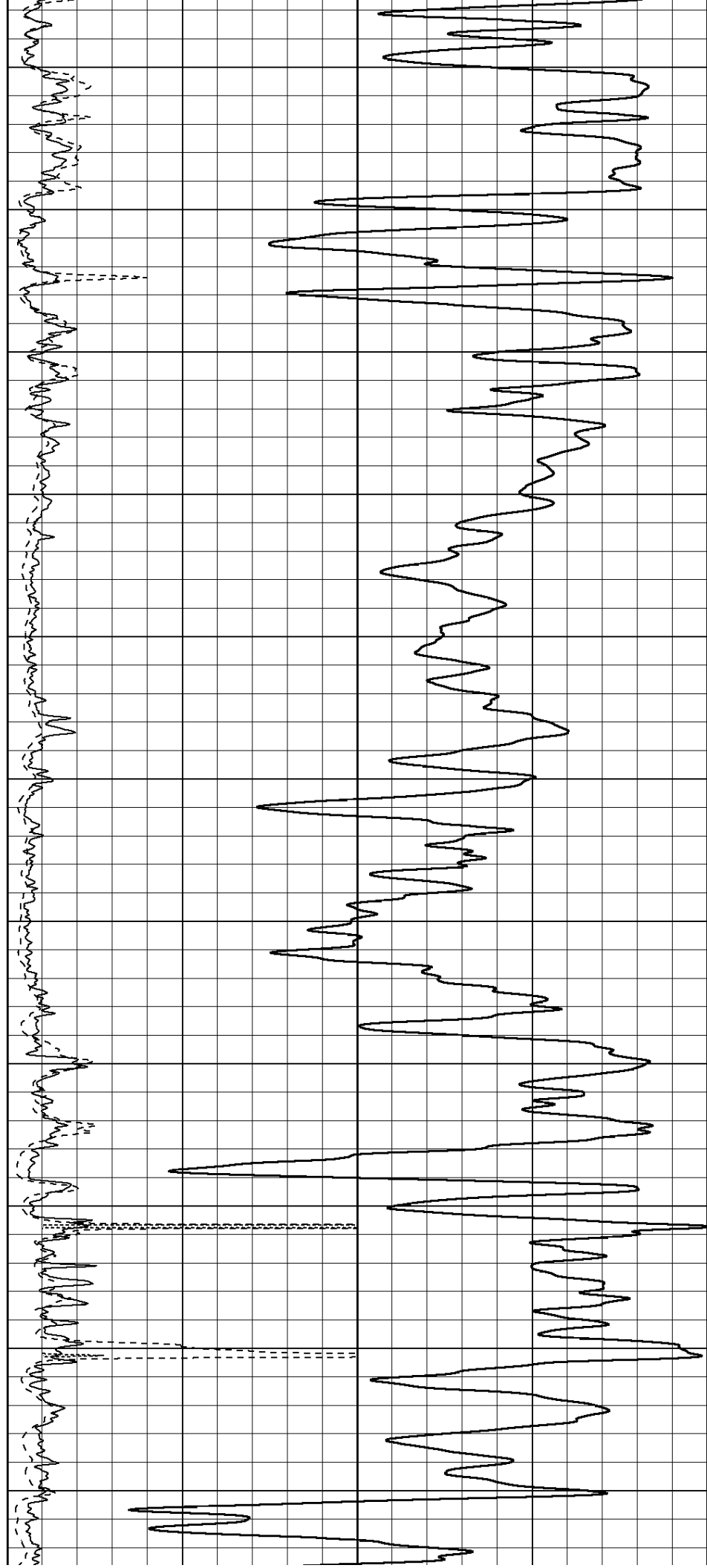
750

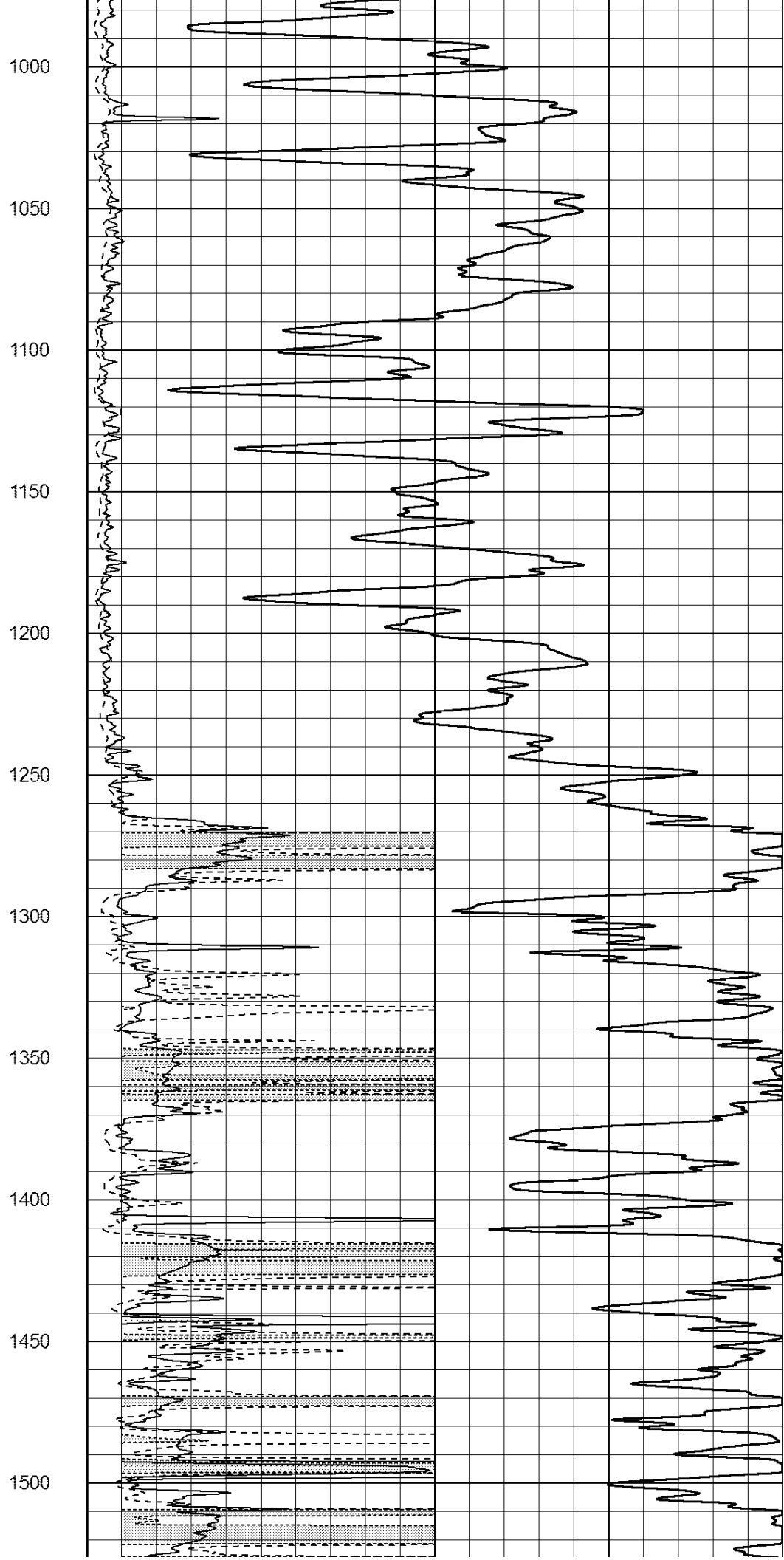
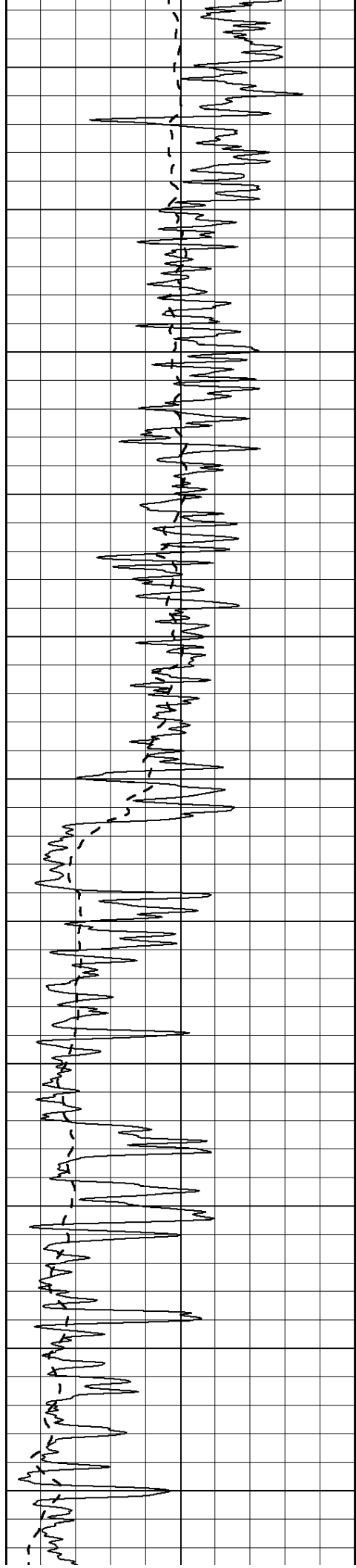
800

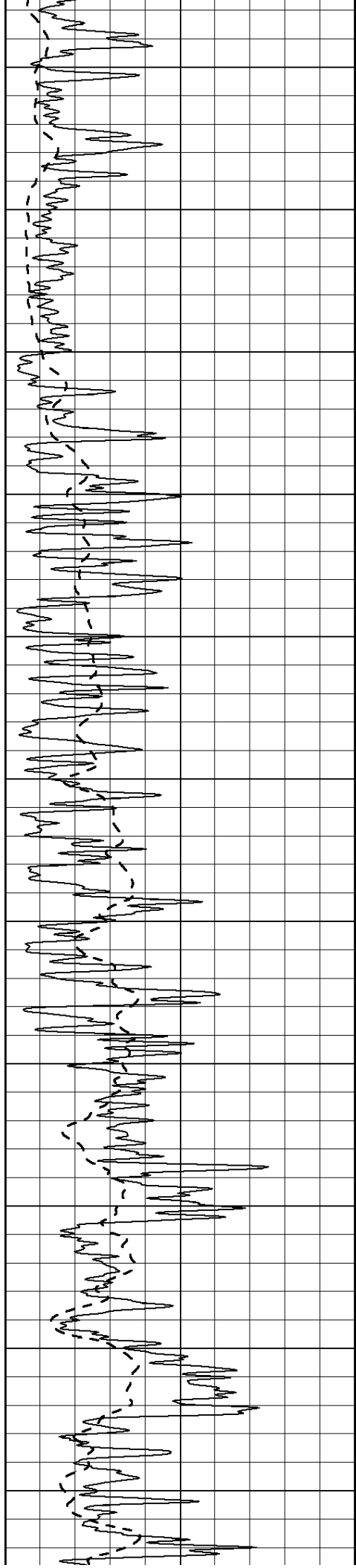
850

900

950







1550

1600

1650

1700

1750

1800

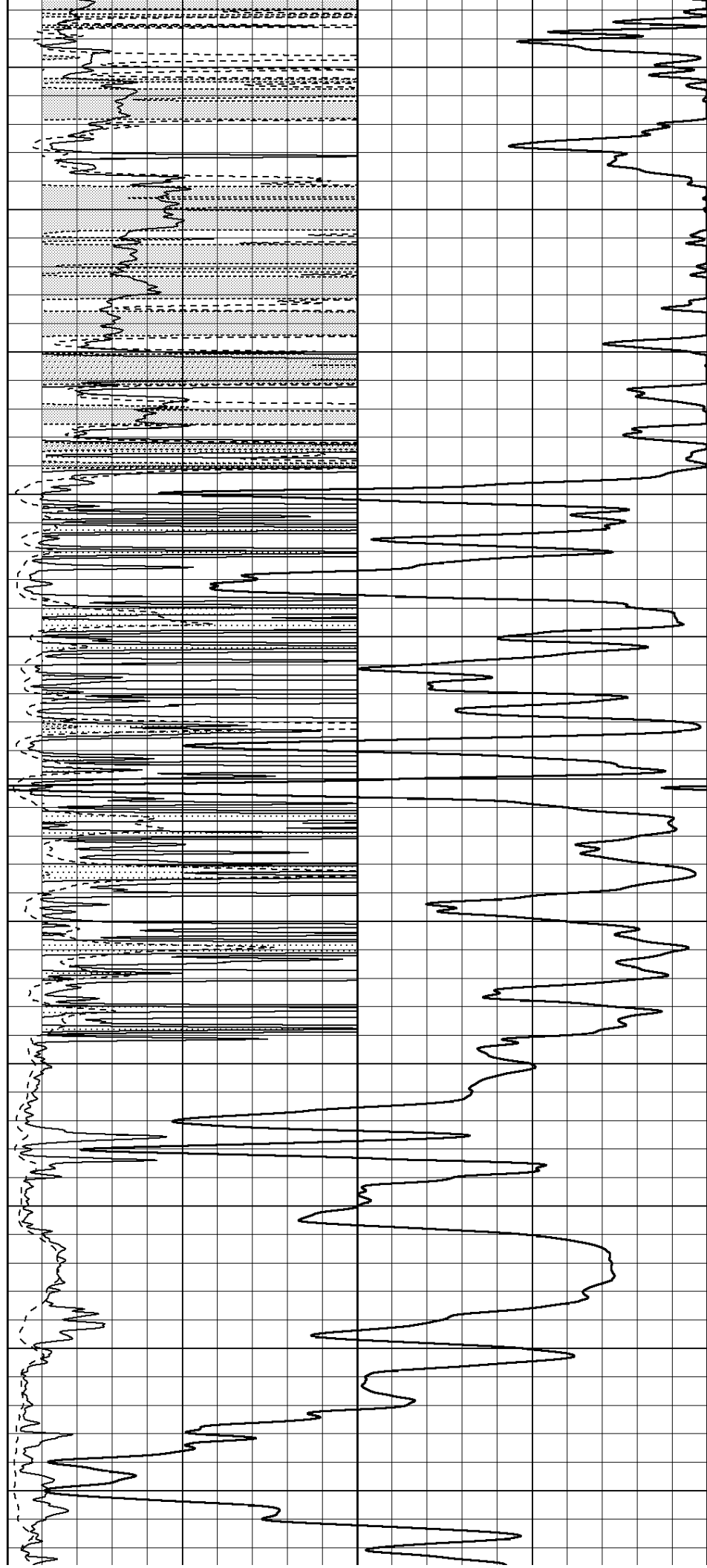
1850

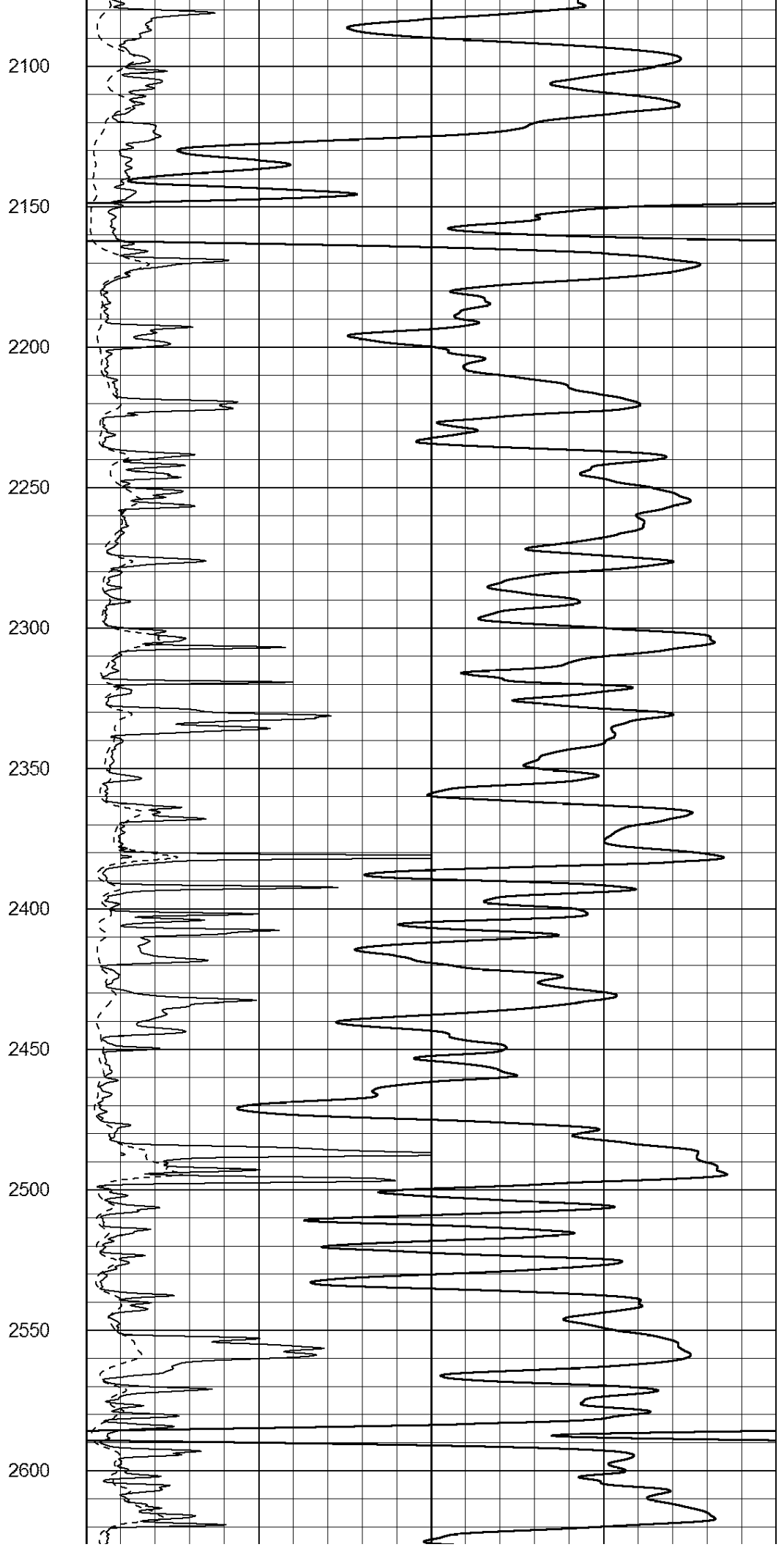
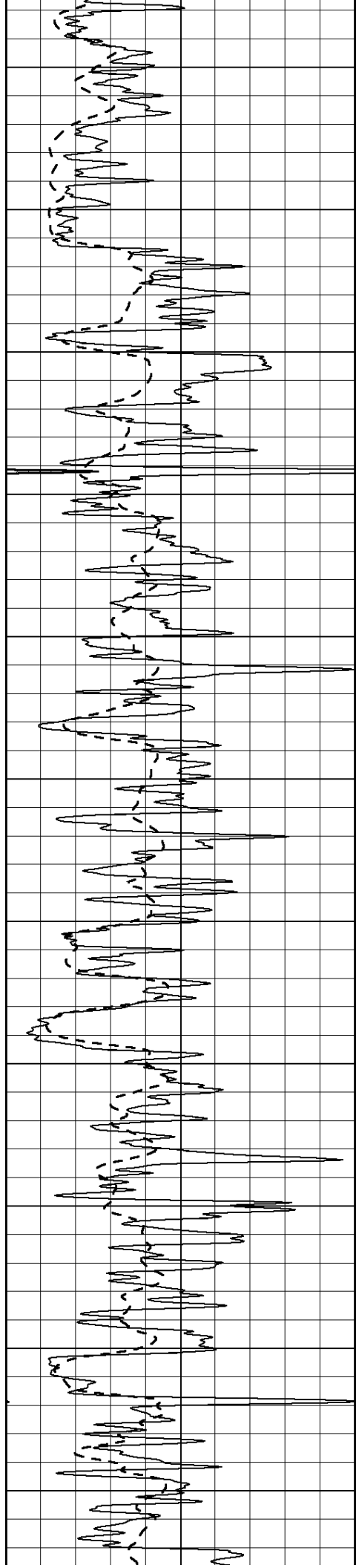
1900

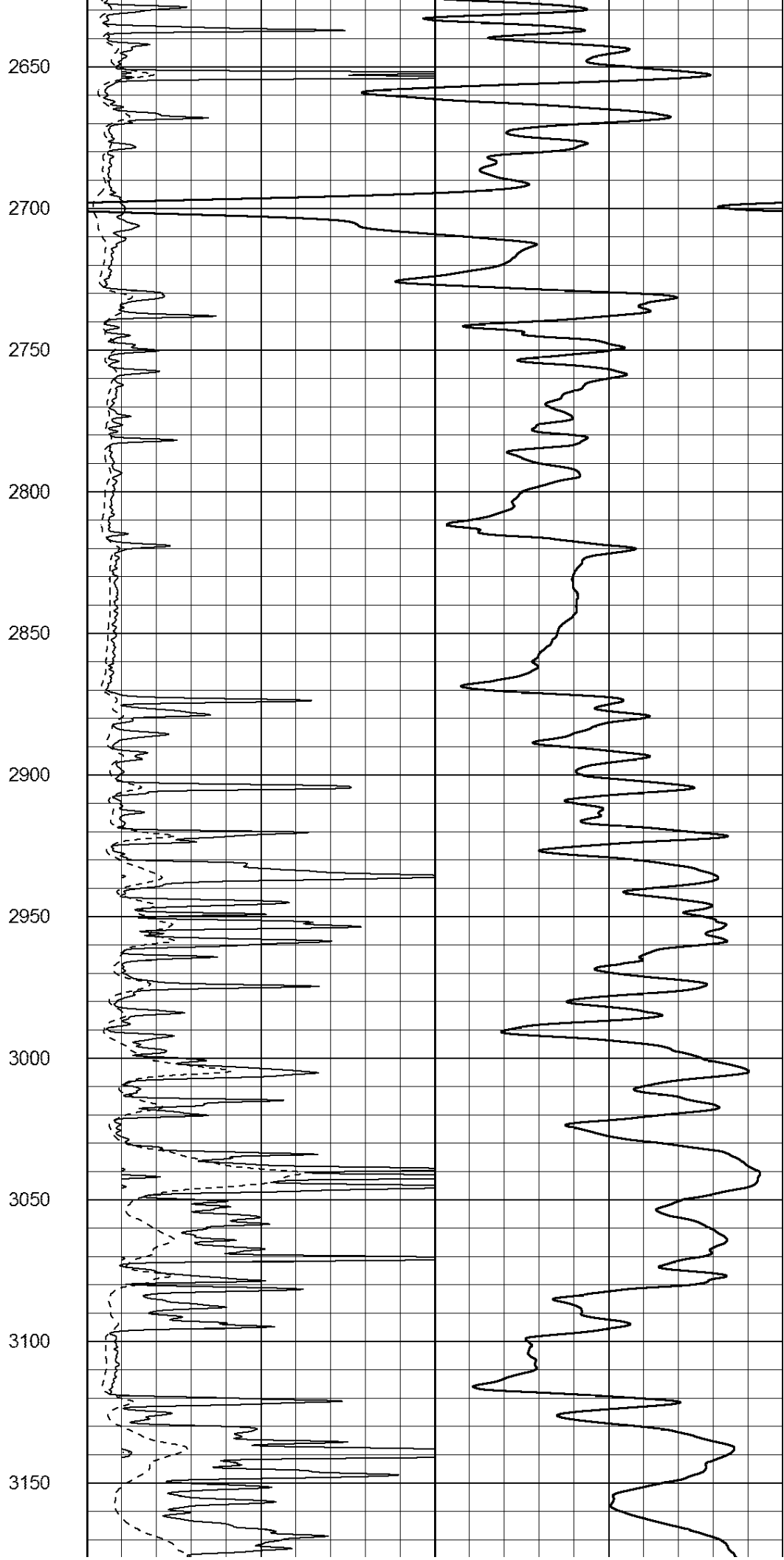
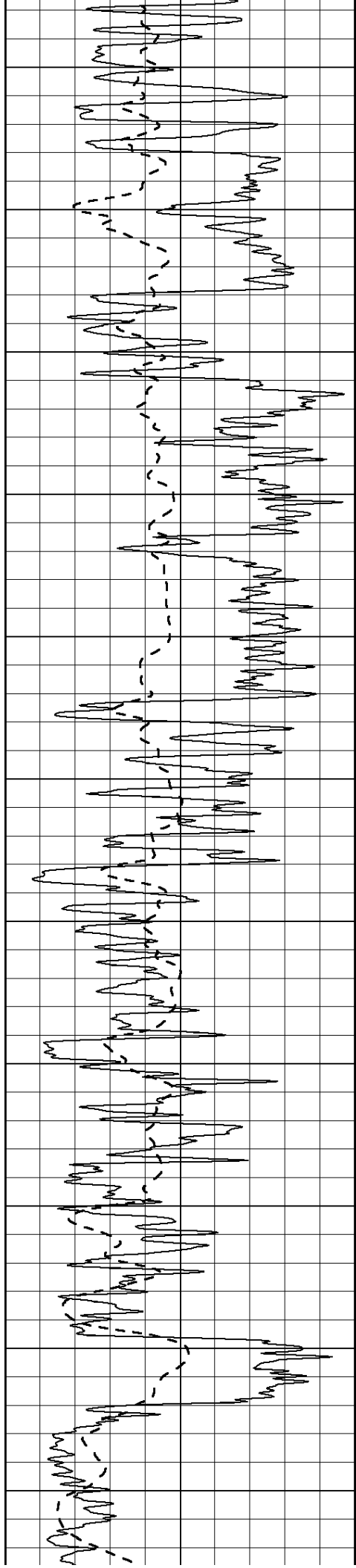
1950

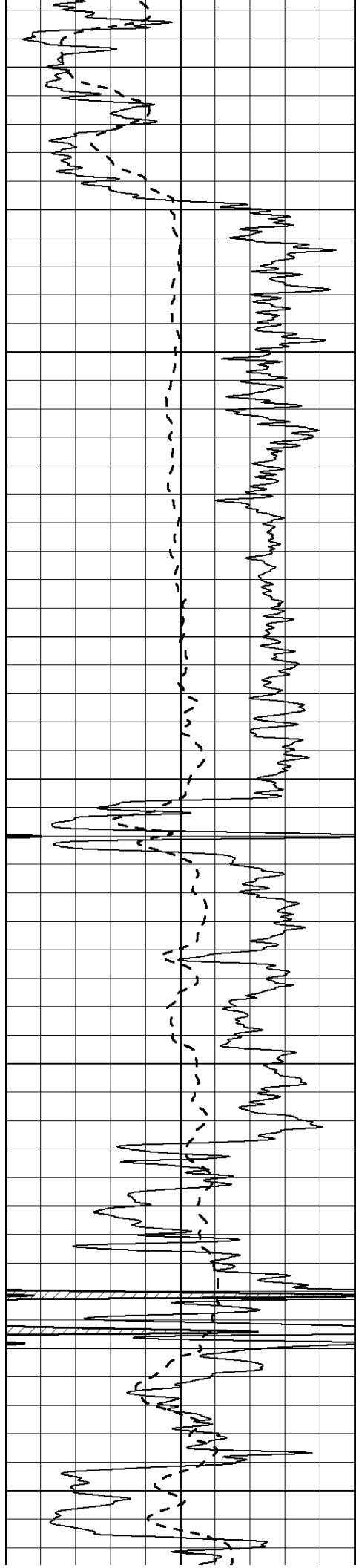
2000

2050









3200

3250

3300

3350

3400

3450

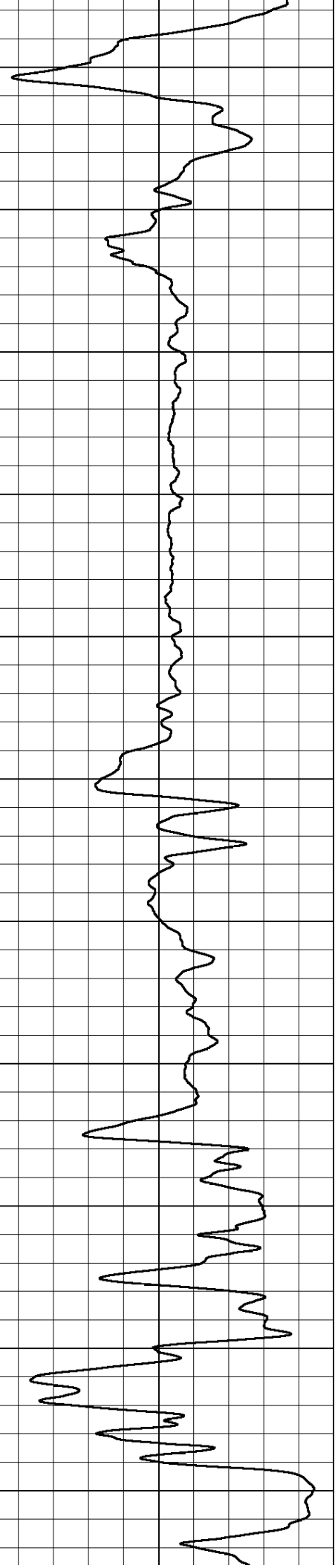
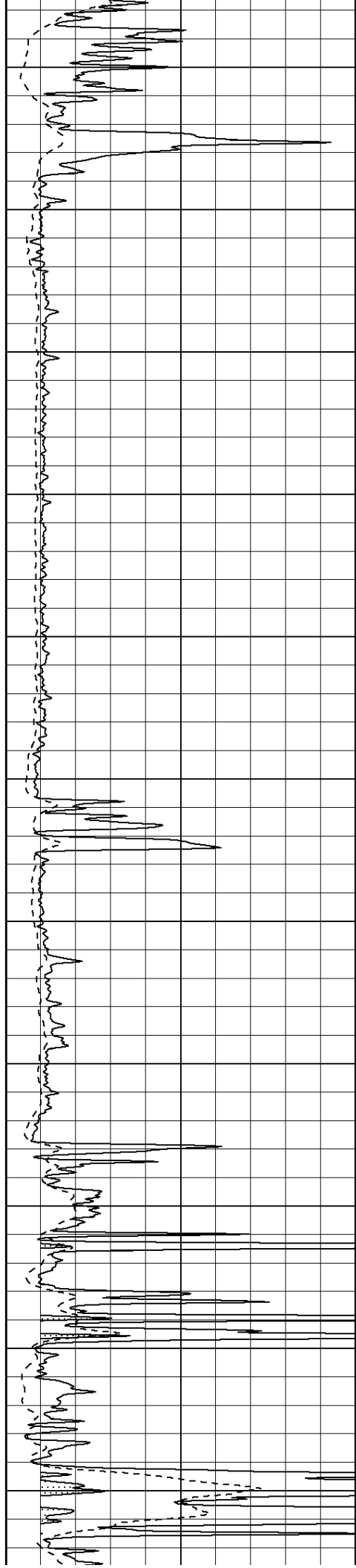
3500

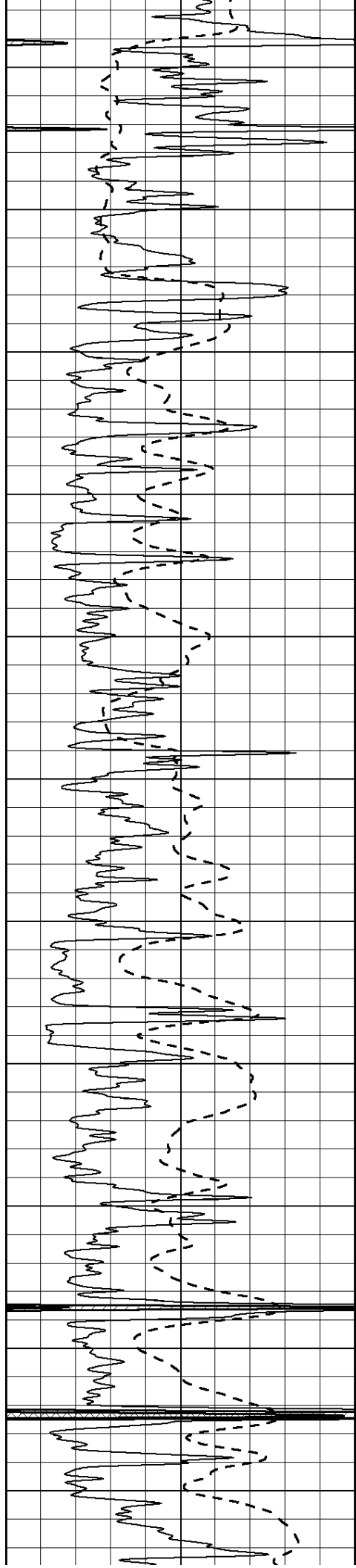
3550

3600

3650

3700





3750

3800

3850

3900

3950

4000

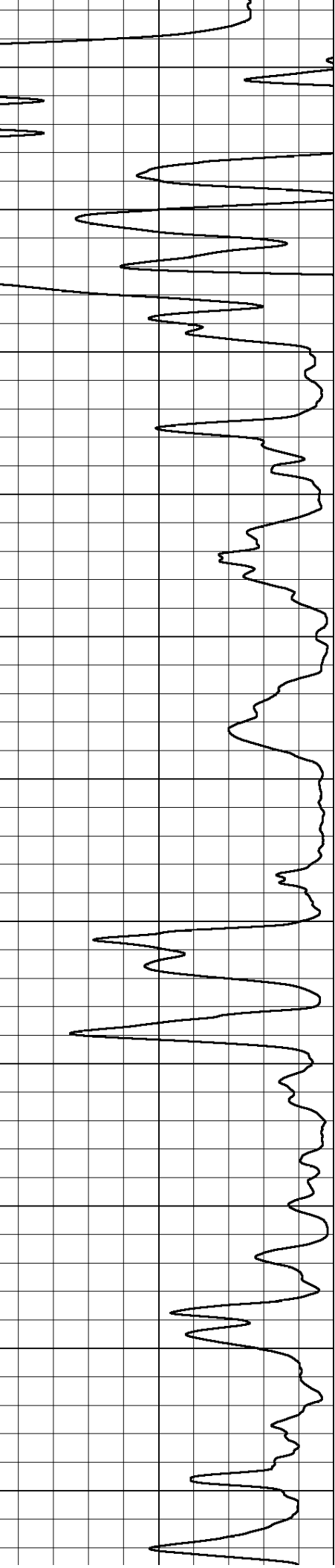
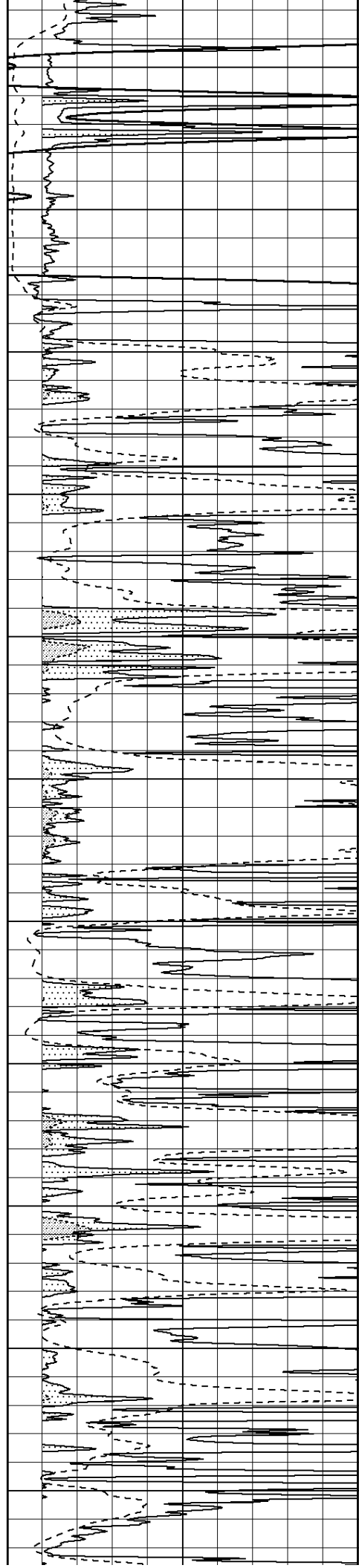
4050

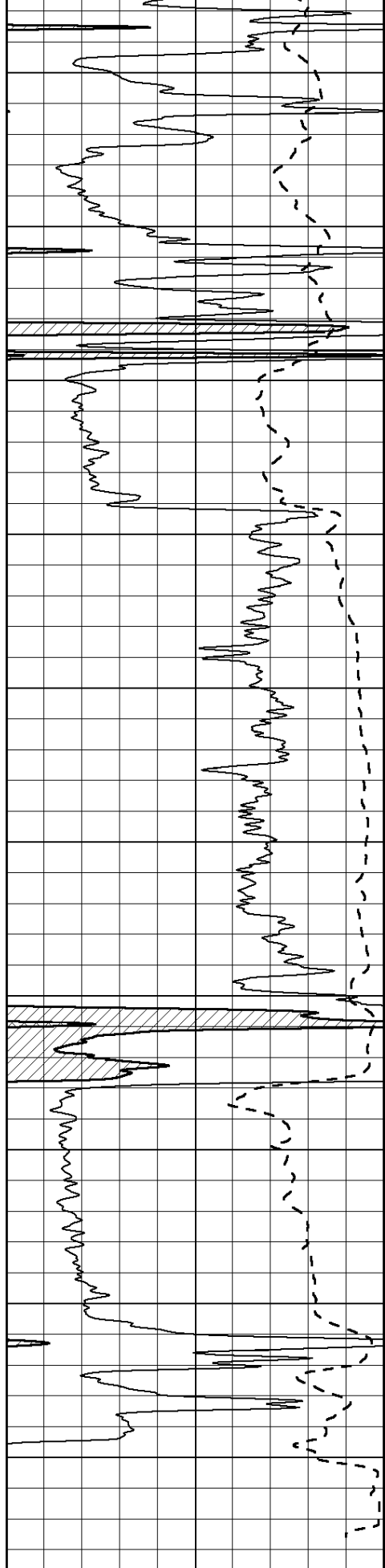
4100

4150

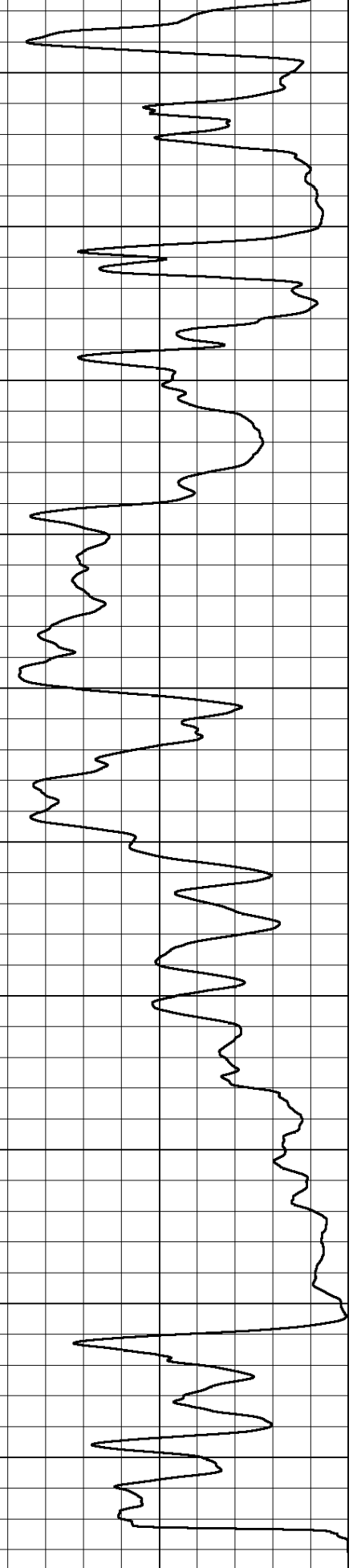
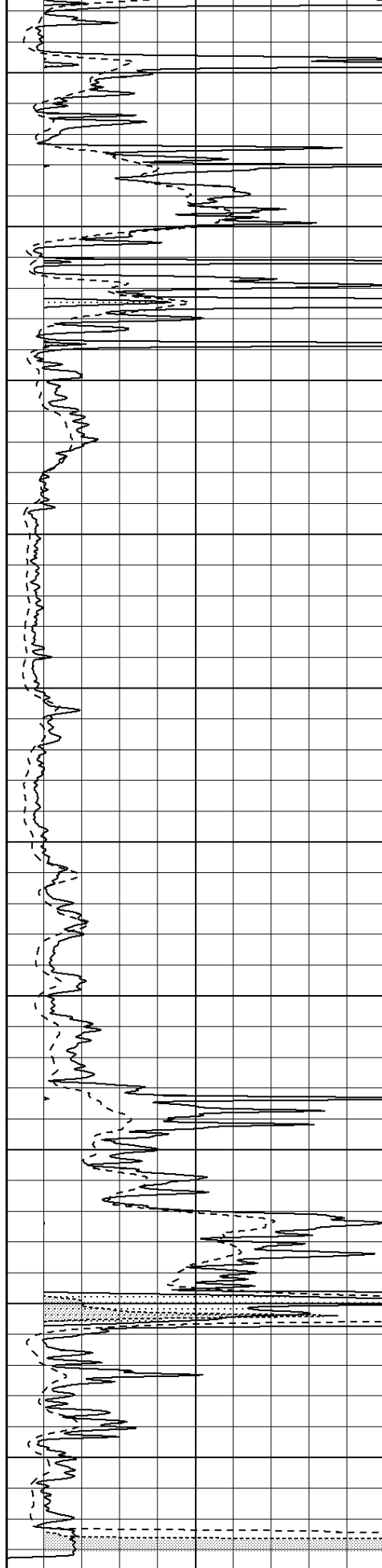
4200

4250





4300
4350
4400
4450
4500
4550
4600
4650
4700
4750



0 Gamma Ray (GAPI) 150
-100 SP (mV) 100

0 RLL3 (Ohm-m) 50
0 RILD (Ohm-m) 50
1000 CILD (mmho/m) 0

50	RILD X10 (Ohm-m)	500
50	RLL3 X10 (Ohm-m)	500

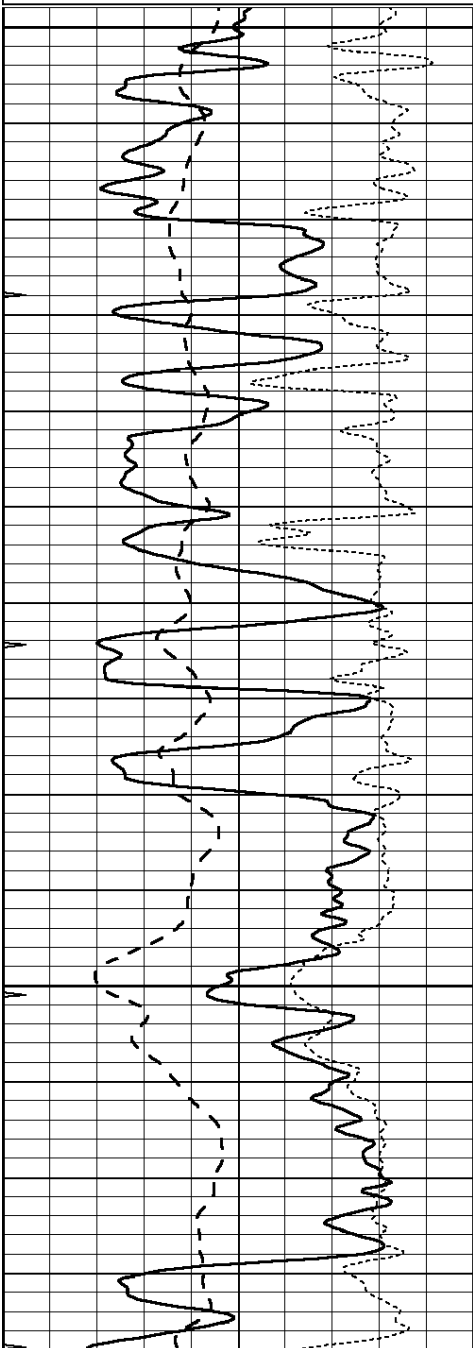


UPPER SECTION

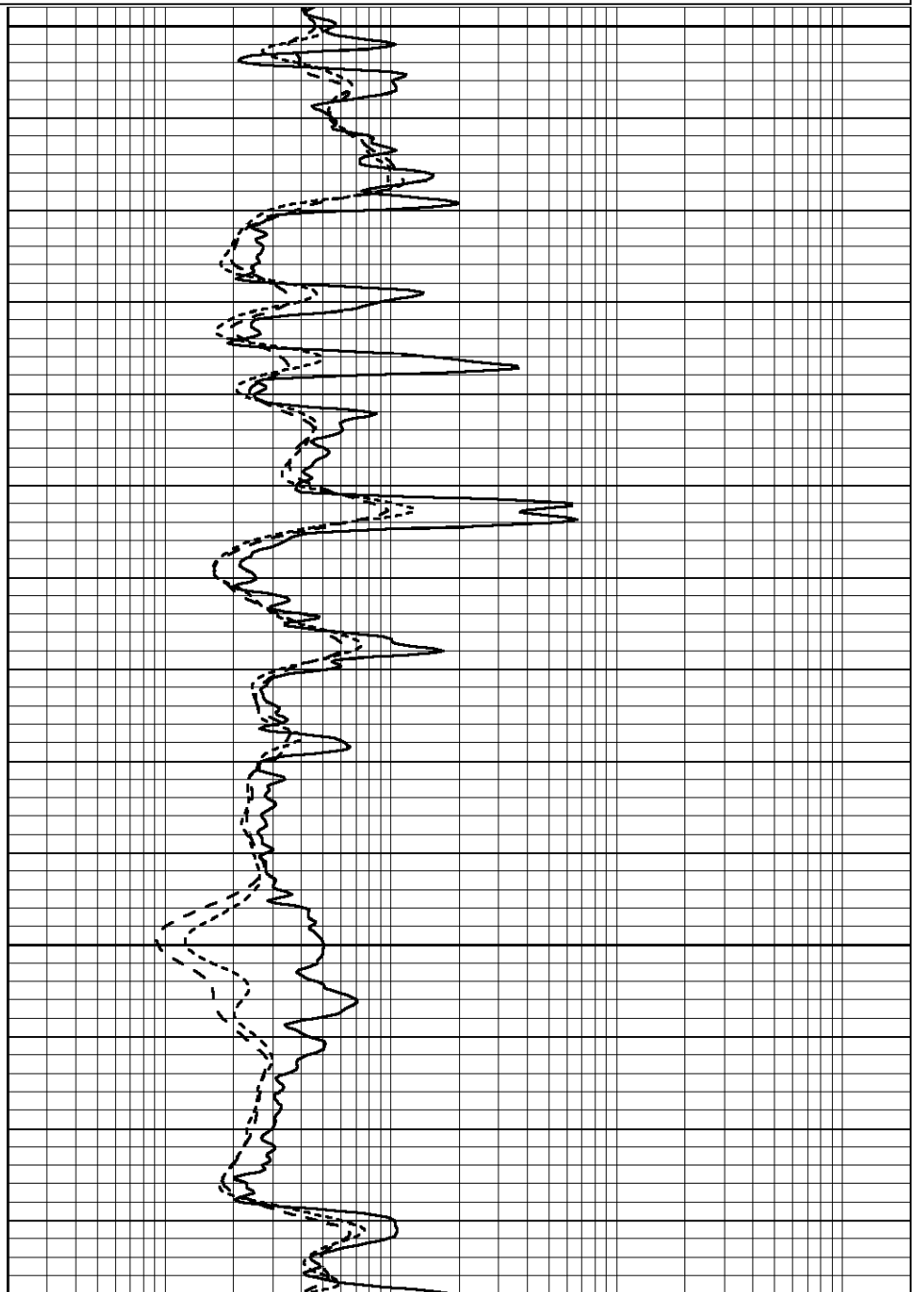
Database File: 409687pe.db
 Dataset Pathname: pass3.5
 Presentation Format: dil
 Dataset Creation: Wed Oct 03 13:22:21 2012 by Calc Open-Cased 110302
 Charted by: Depth in Feet scaled 1:240

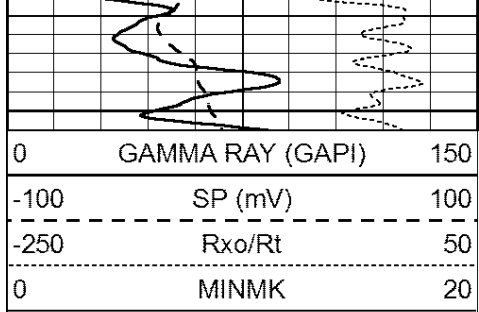
0	GAMMA RAY (GAPI)	150
-100	SP (mV)	100
-250	Rxo/Rt	50
0	MINMK	20

0.2	SHALLOW GUARD (Ohm-m)	2000
0.2	DEEP INDUCTION (Ohm-m)	2000
0.2	MEDIUM INDUCTION (Ohm-m)	2000

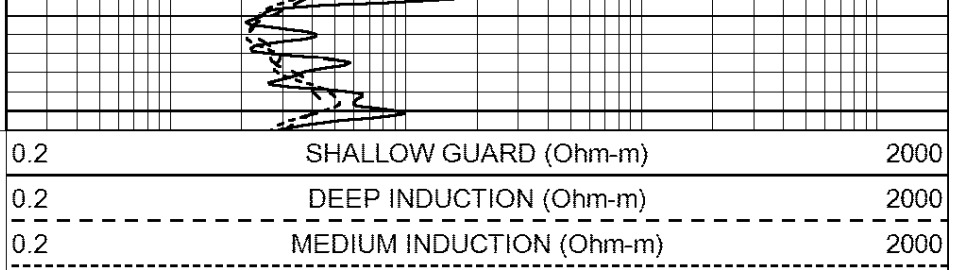


2600
2650
2700





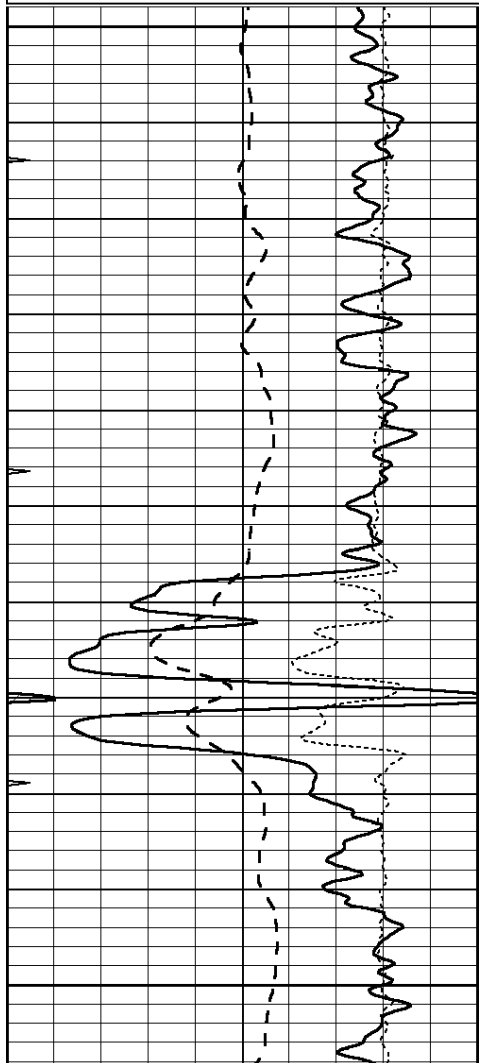
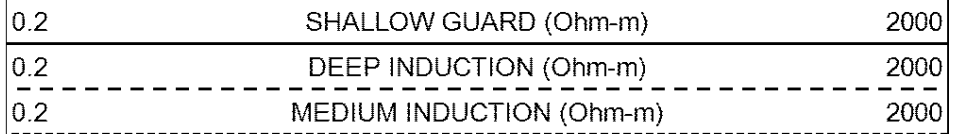
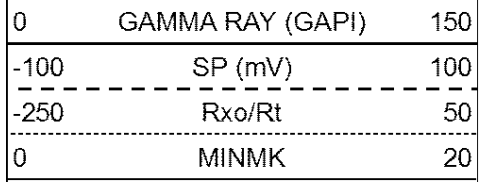
2750



**COMPLETION
& PRODUCTION
SERVICES CO.**

MAIN SECTION

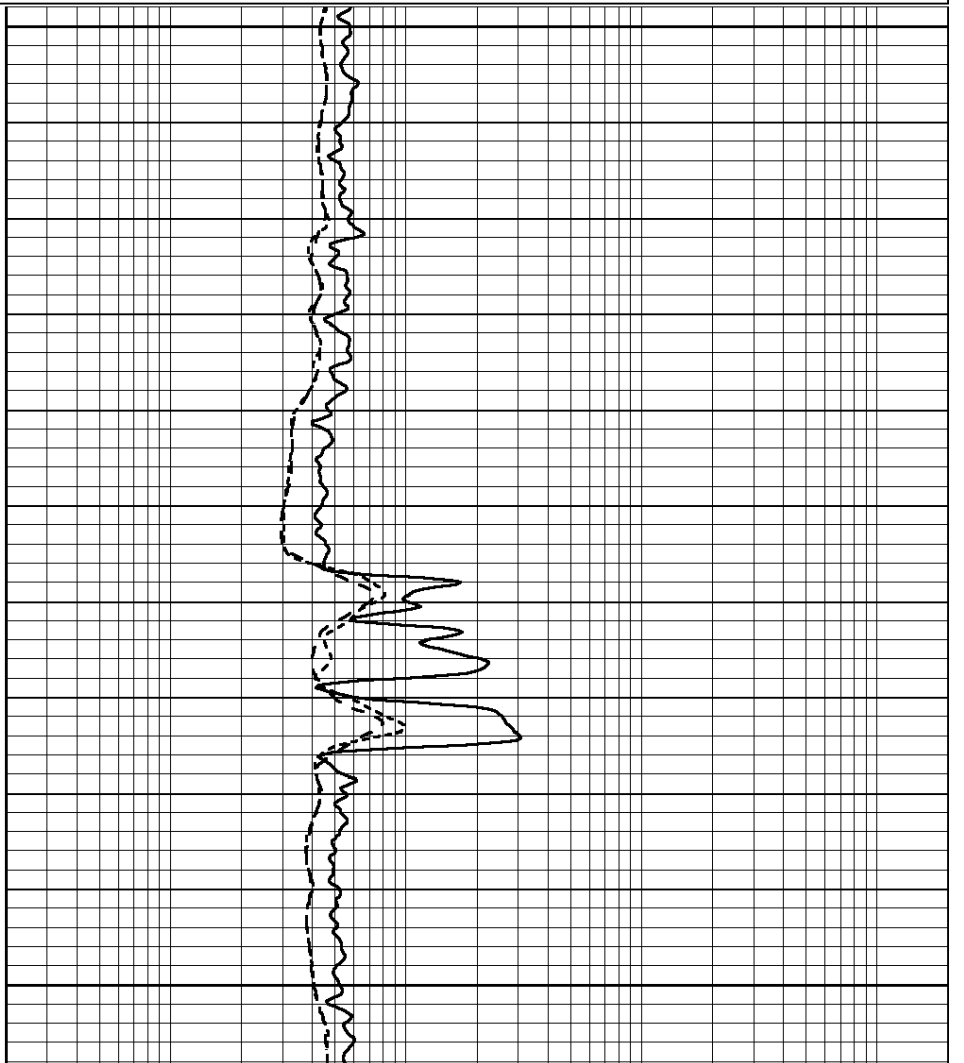
Database File: 409687pe.db
 Dataset Pathname: pass3.7
 Presentation Format: dil
 Dataset Creation: Wed Oct 03 14:02:46 2012
 Charted by: Depth in Feet scaled 1:240

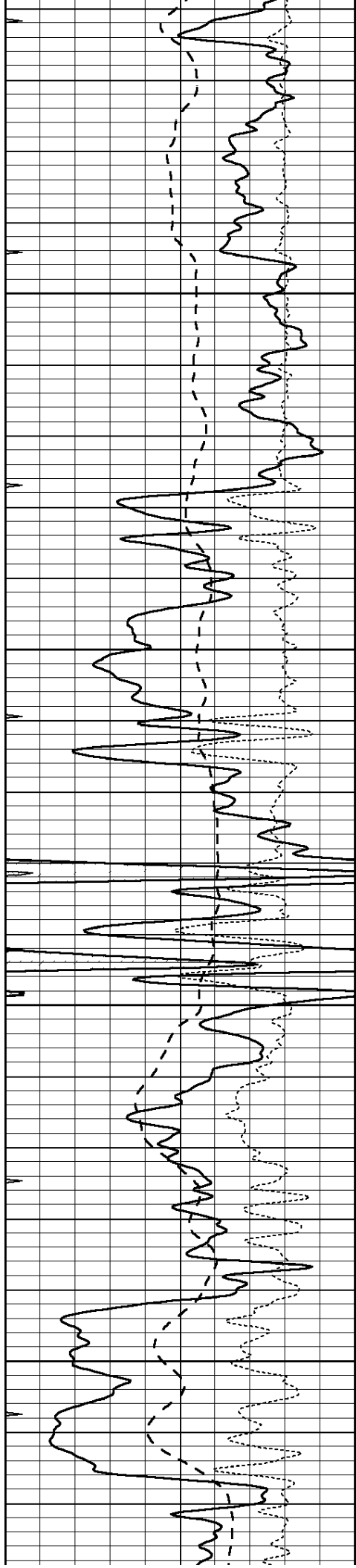


3400

3450

3500



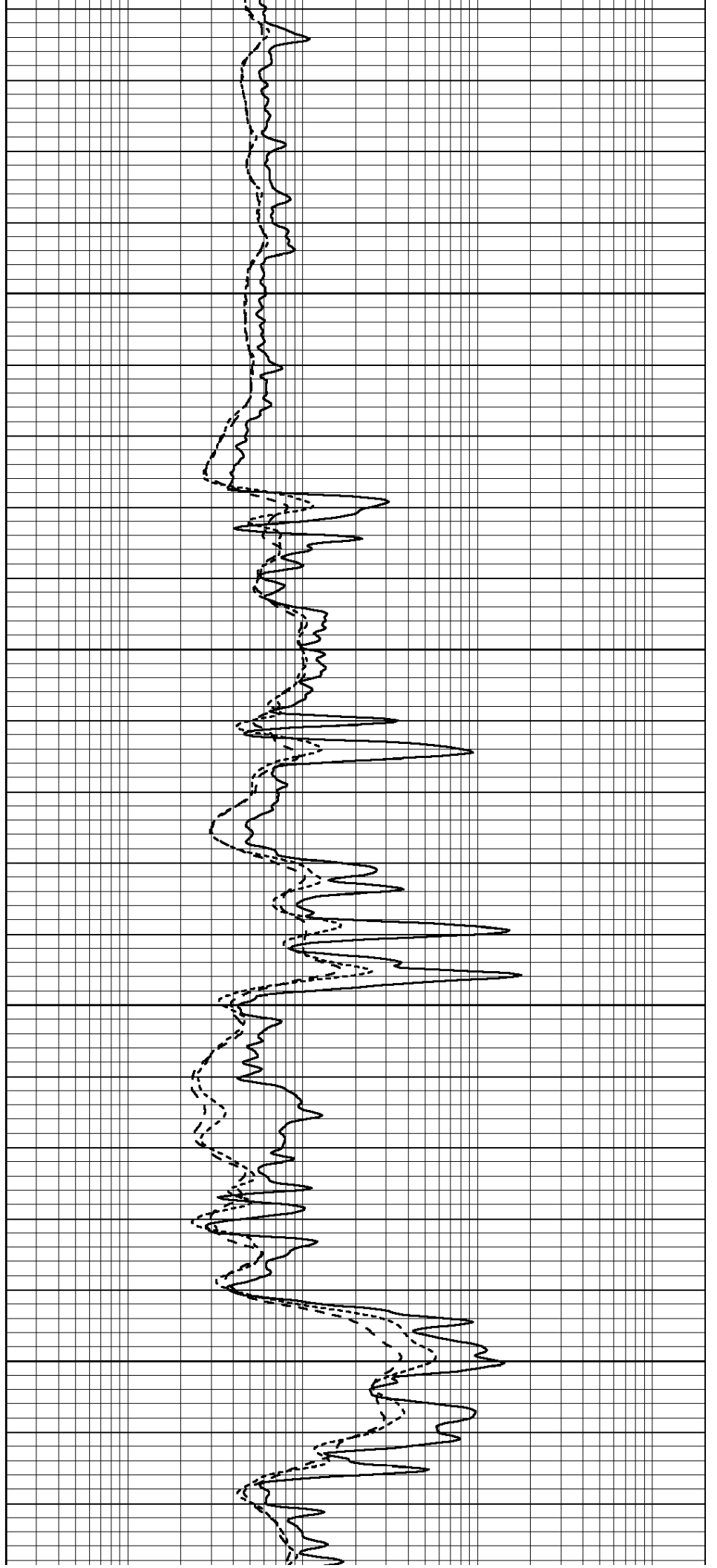


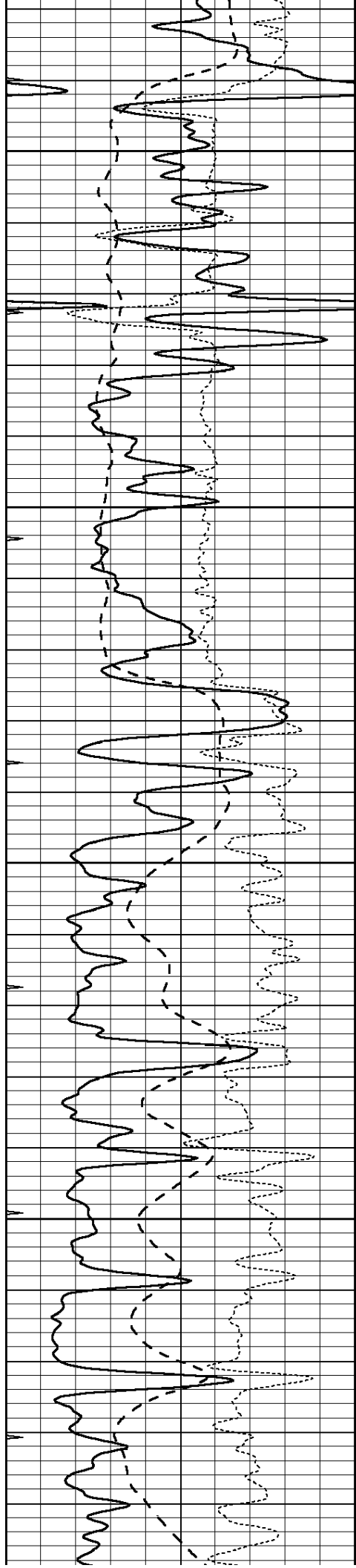
3550

3600

3650

3700



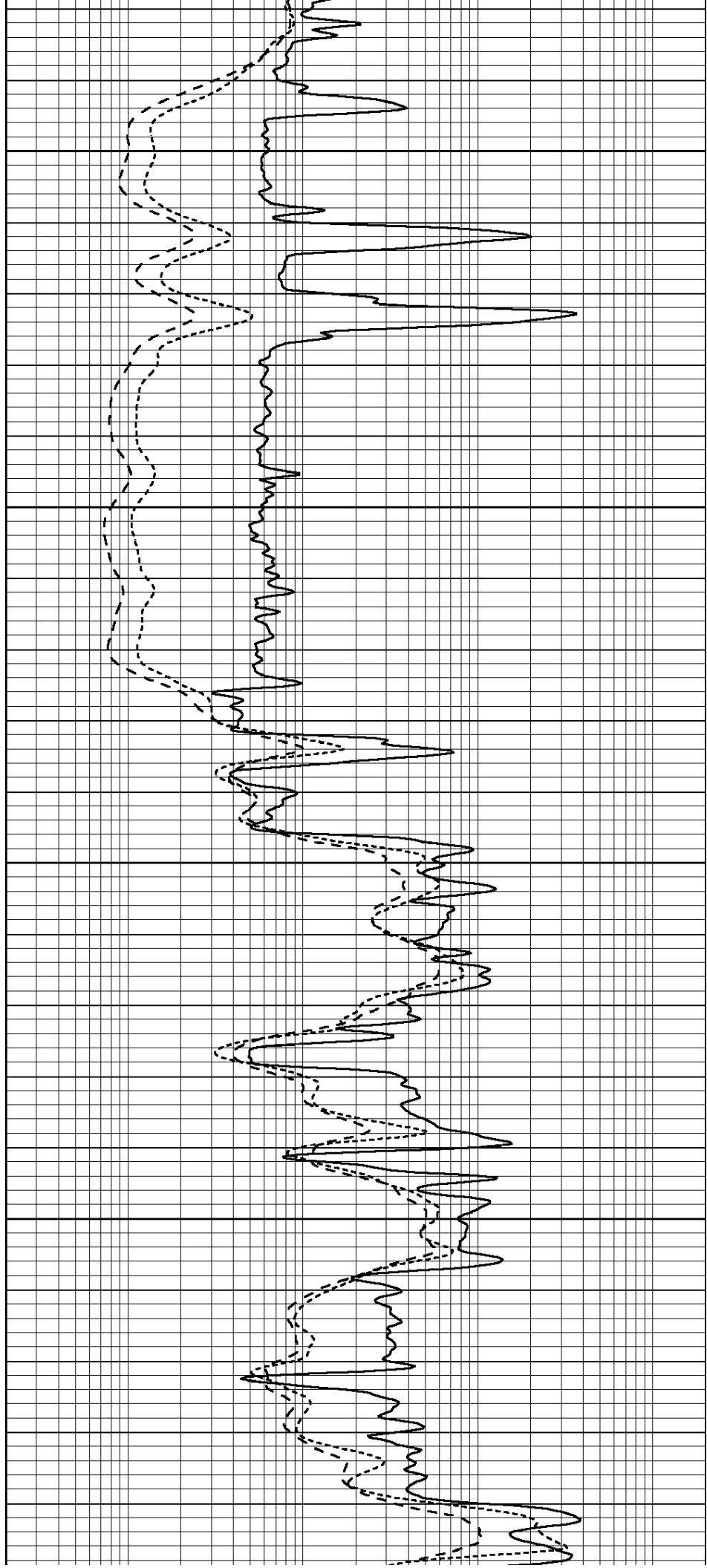


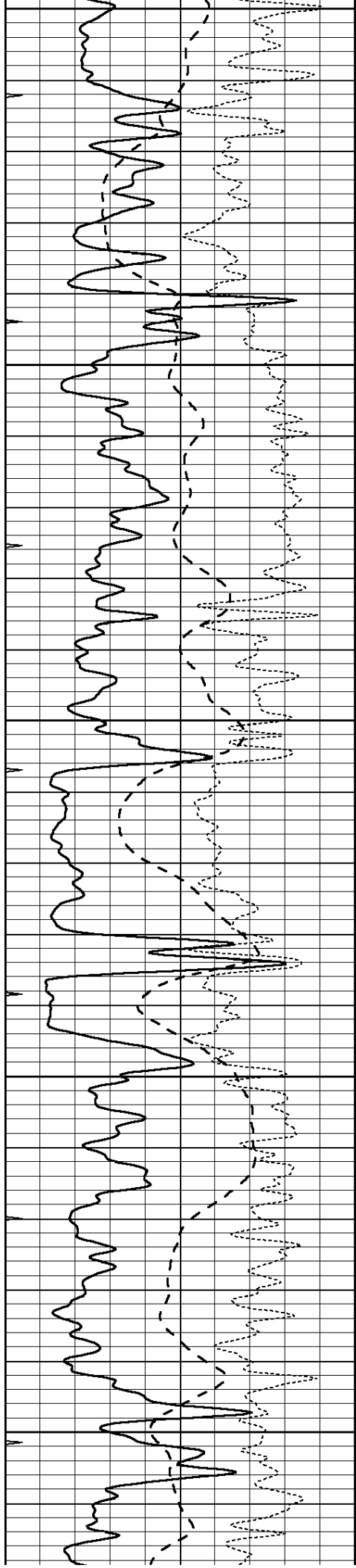
3750

3800

3850

3900





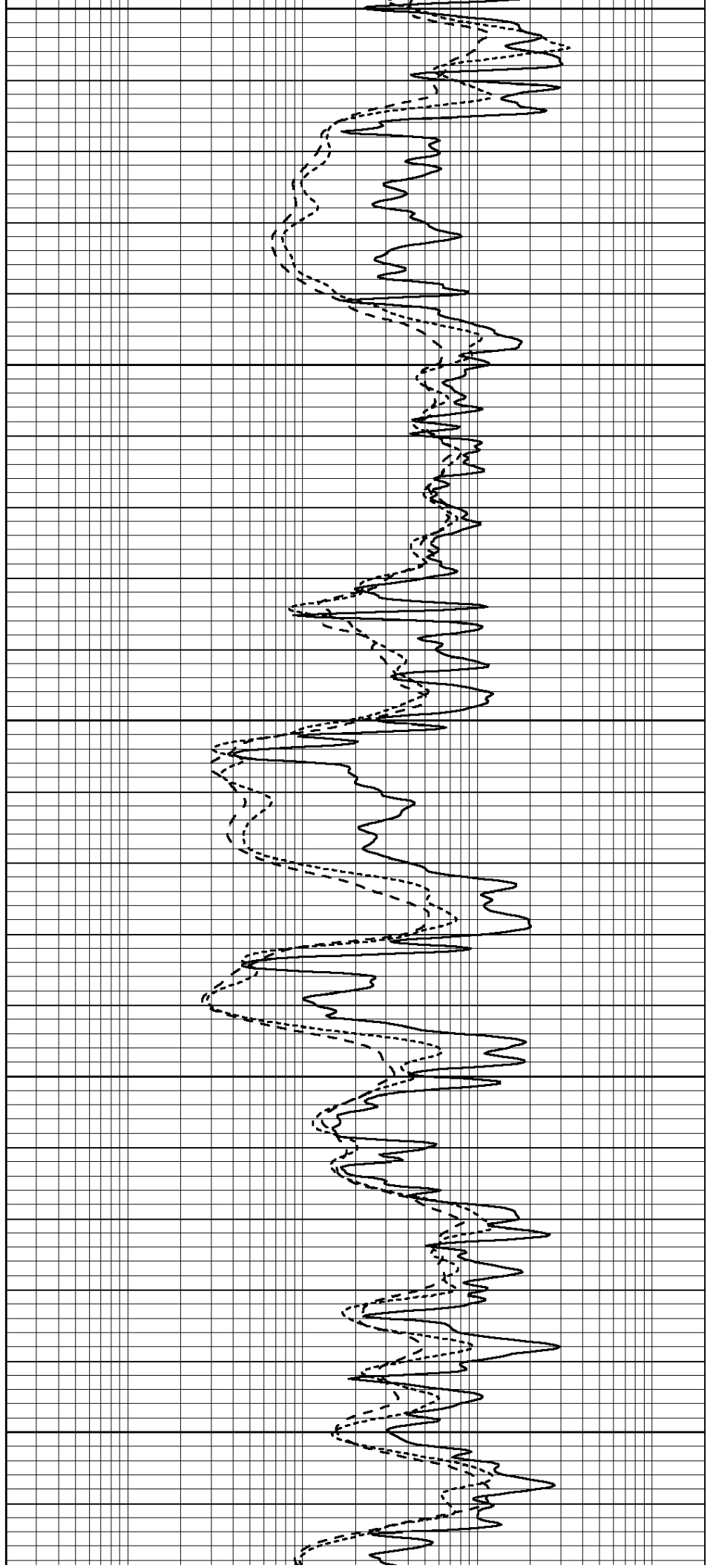
3950

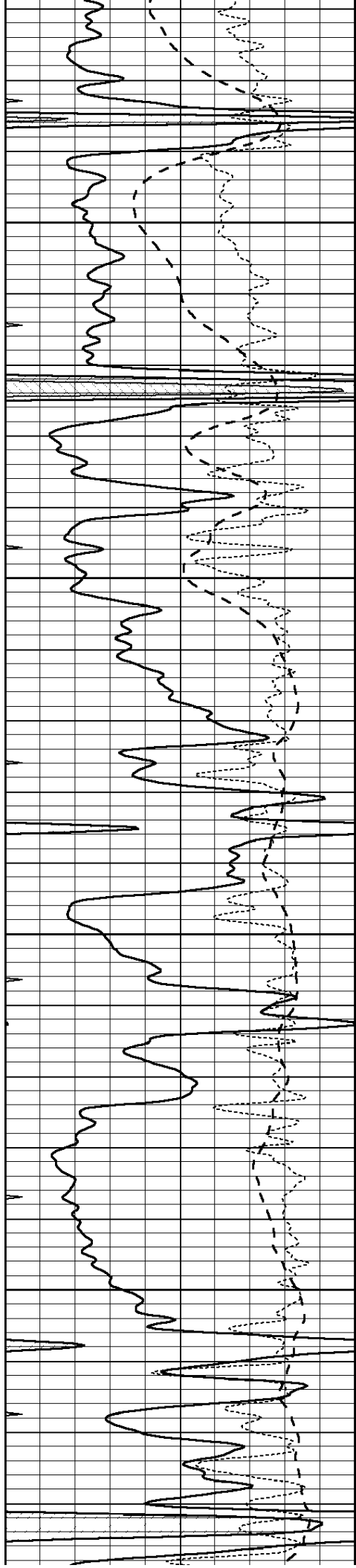
4000

4050

4100

4150



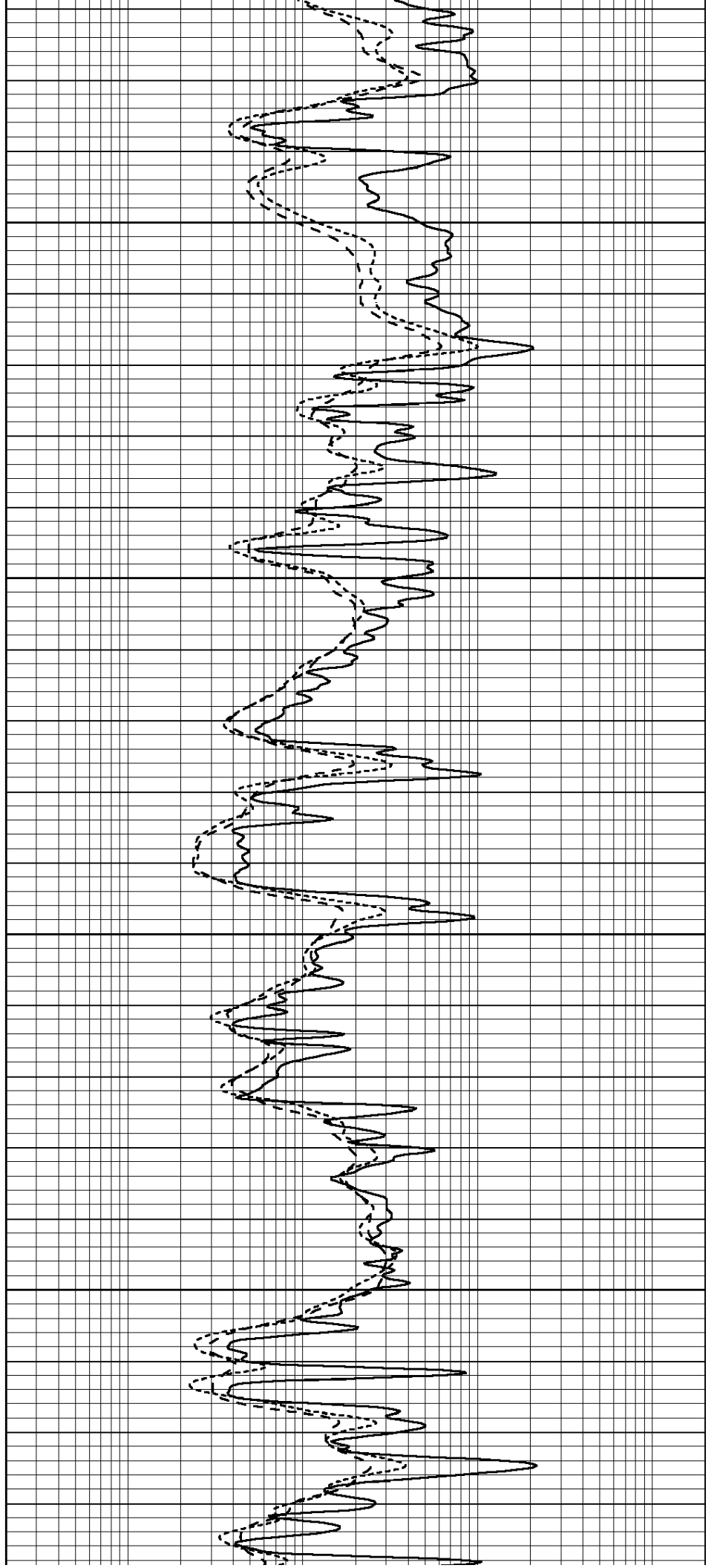


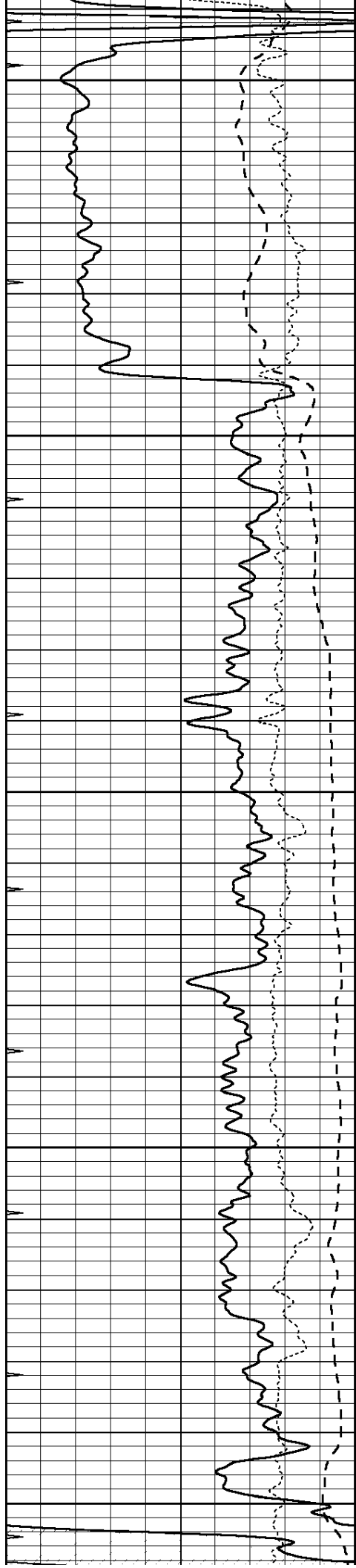
4200

4250

4300

4350





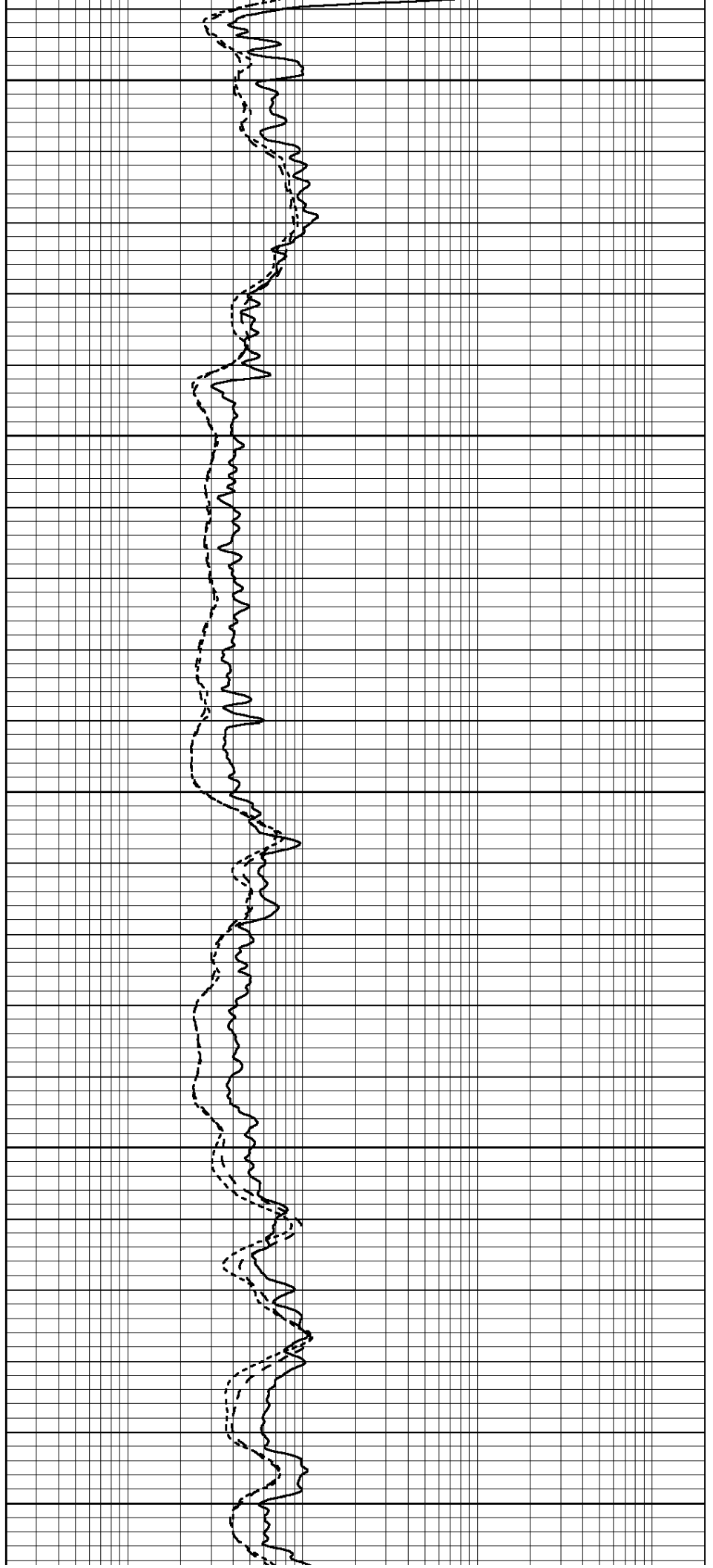
4400

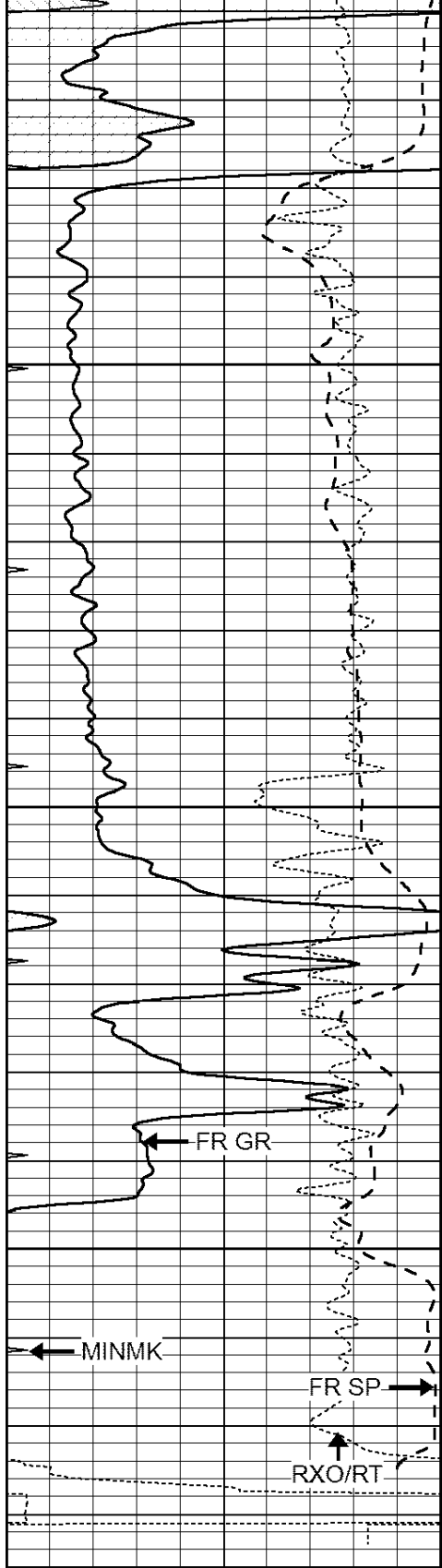
4450

4500

4550

4600





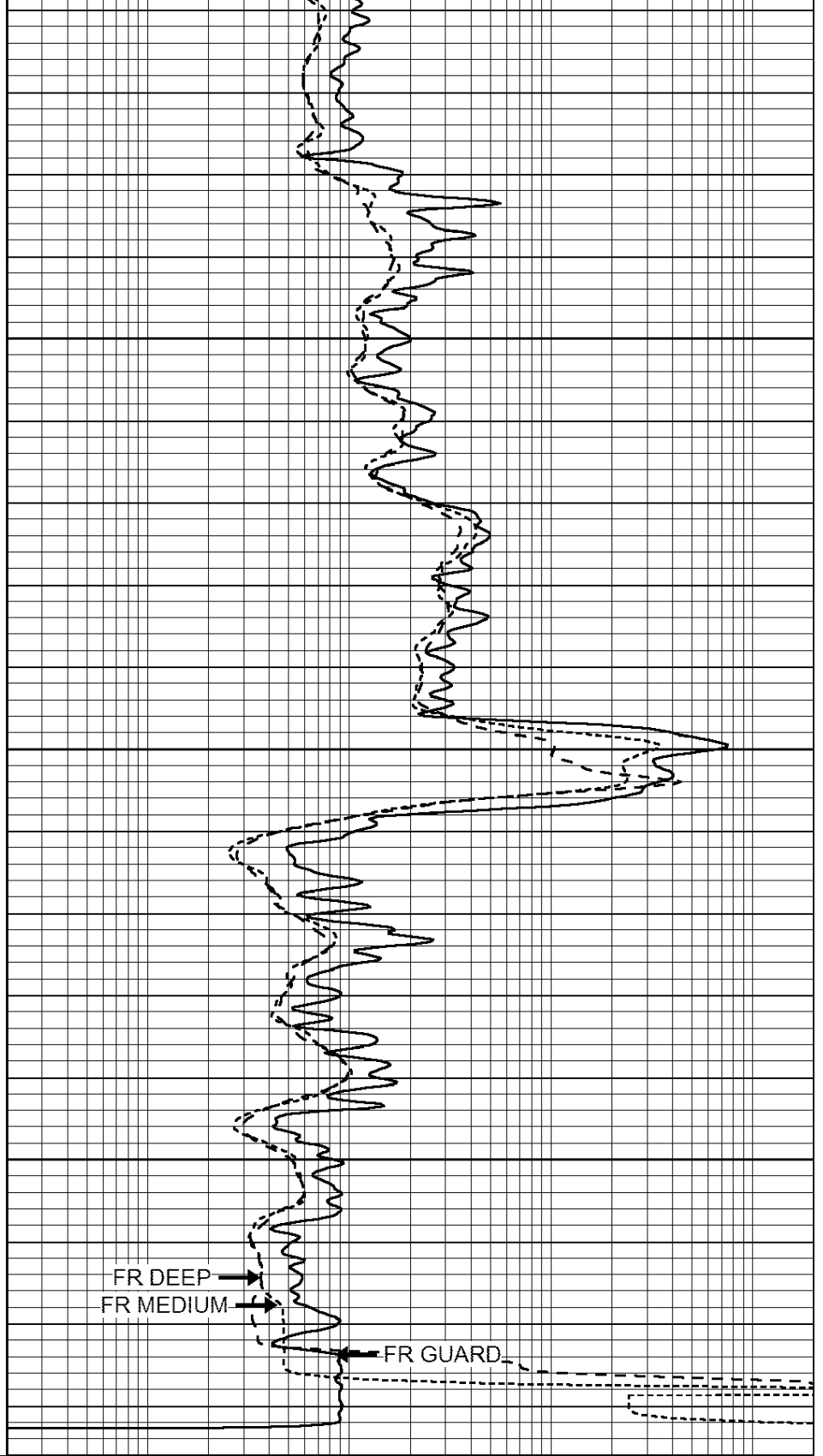
4650

4700

4750

LTD 4776

0	GAMMA RAY (GAPI)	150
-100	SP (mV)	100
-250	Rxo/Rt	50
0	MINMK	20



0.2	SHALLOW GUARD (Ohm-m)	2000
0.2	DEEP INDUCTION (Ohm-m)	2000
0.2	MEDIUM INDUCTION (Ohm-m)	2000

**& PRODUCTION
SERVICES CO.**

Database File: 409687pe.db
 Dataset Pathname: pass2.1
 Presentation Format: dil
 Dataset Creation: Wed Oct 03 13:20:23 2012 by Calc Open-Cased 110302
 Charted by: Depth in Feet scaled 1:240

0	GAMMA RAY (GAPI)	150
-100	SP (mV)	100
-250	Rxo/Rt	50
0	MINMK	20

0.2	SHALLOW GUARD (Ohm-m)	2000
0.2	DEEP INDUCTION (Ohm-m)	2000
0.2	MEDIUM INDUCTION (Ohm-m)	2000

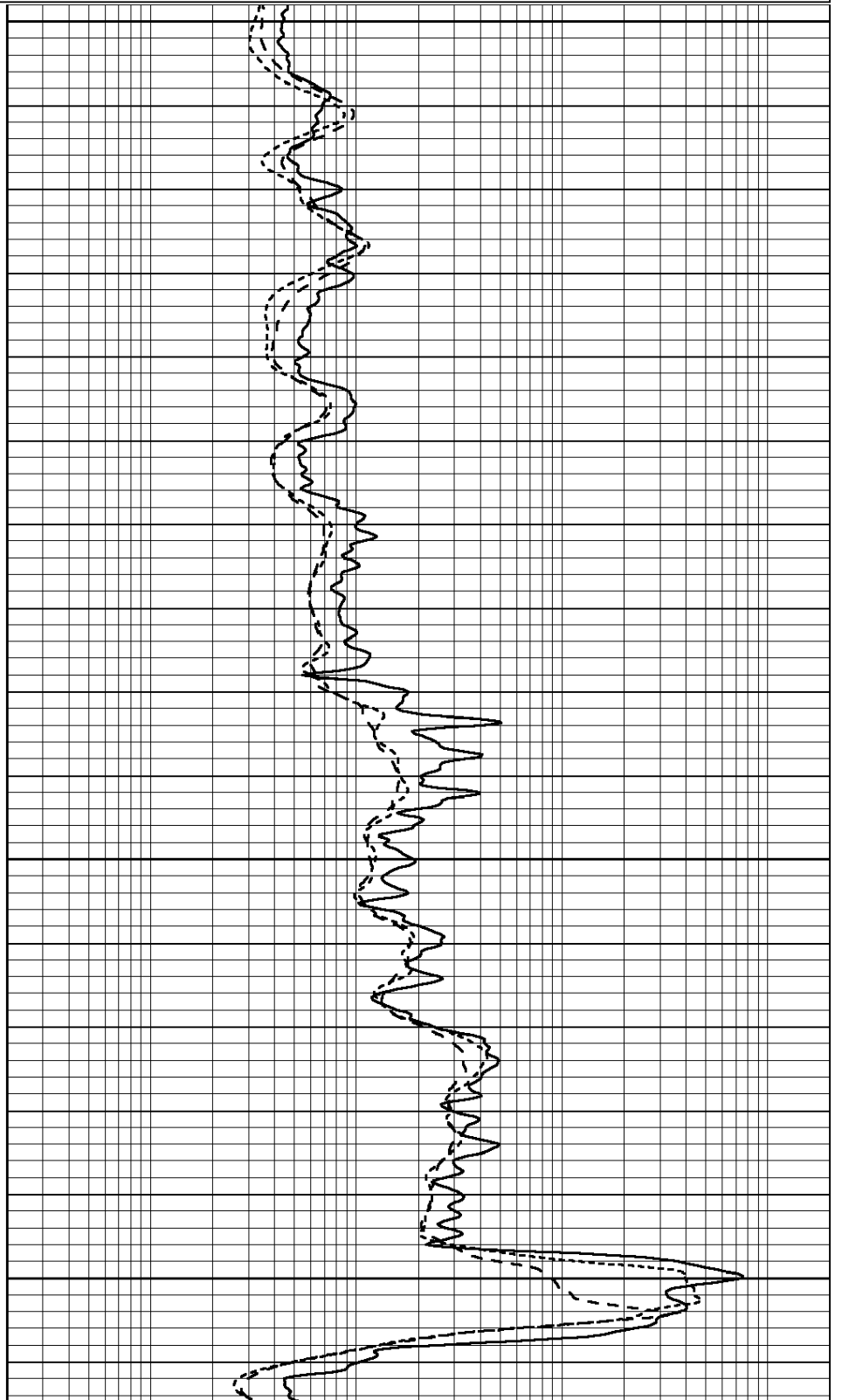


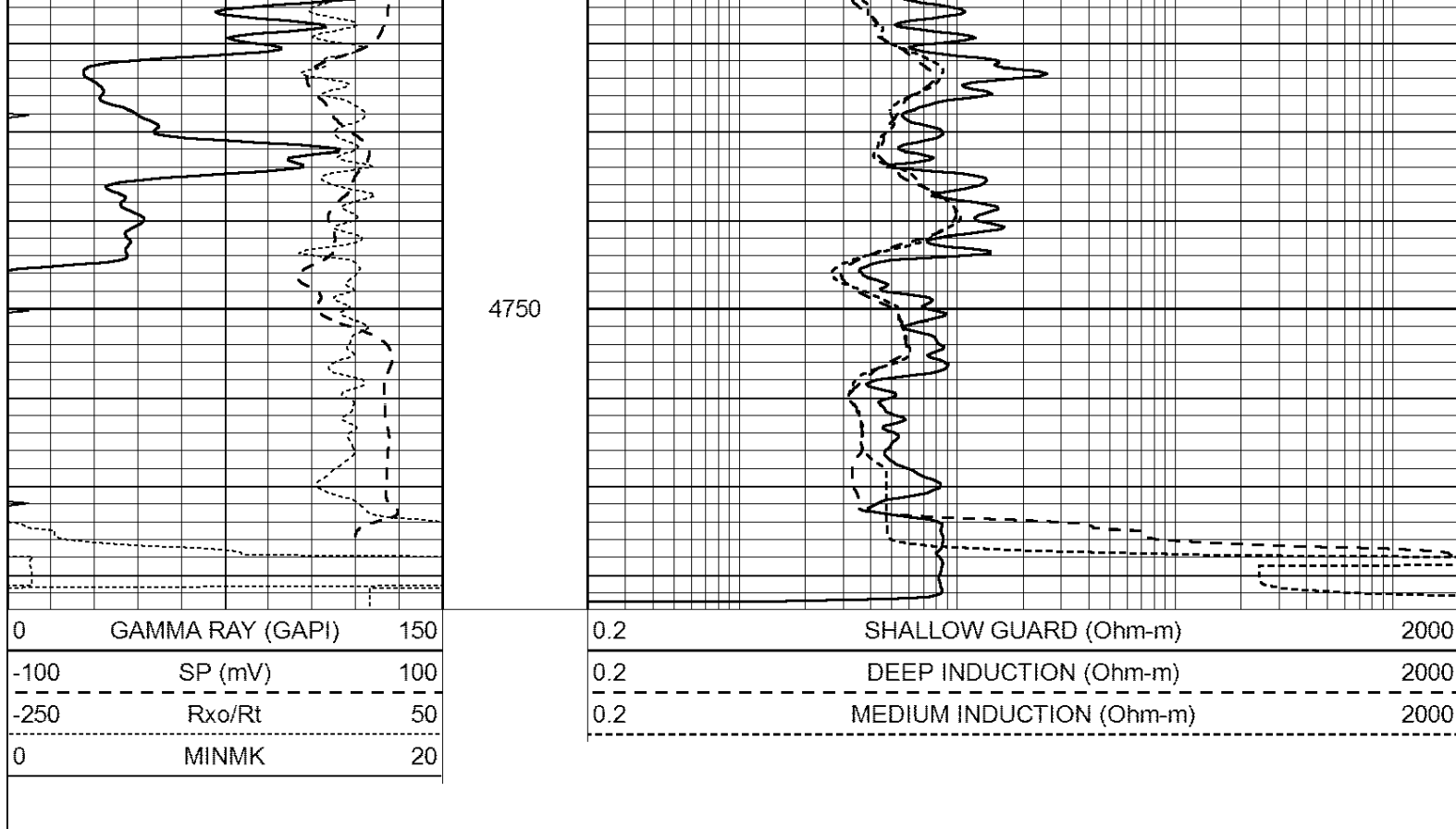
4550

4600

4650

4700





Calibration Report

Database File: 409687pe.db
 Dataset Pathname: pass3.7
 Dataset Creation: Wed Oct 03 14:02:46 2012

Dual Induction Calibration Report

Serial-Model: DIL3-GEAR
 Performed: Mon Oct 01 18:43:03 2012

Loop:	Readings			References			Results	
	Air	Loop		Air	Loop		m	b
Deep	0.011	0.656	V	0.000	400.000	mmho/m	640.000	8.000
Medium	0.013	0.740	V	0.000	462.500	mmho/m	700.000	-6.000
Internal:	Zero	Cal		Zero	Cal		m	b
Deep	0.002	0.645	V	0.000	400.000	mmho/m	622.059	-1.071
Medium	0.007	0.740	V	0.000	462.500	mmho/m	631.393	-4.555

Litho Density Calibration Report

Serial: 006 Model: PRB
 Performed Sun Aug 15 09:48:41 2010

Litho Density Calibration

	Background	Magnesium	Aluminum	Sandstone	
Window 1	1686.6	11612.8	3932.0	12718.8	cps
Window 2	1531.4	9204.7	3267.8	9851.9	cps
Window 3	1198.3	4733.6	1952.5	4920.6	cps
Window 4	317.3	321.2	325.9	303.6	cps
Long Space	0.0	7673.3	1736.4	8320.4	cps
Short Space	1.7	2548.5	1657.2	2628.8	cps
Rho		1.7100	2.5900	1.3800	g/cc
Pe			2.5700	1.5500	

Rib Angle : 43.8
Spine Angle : 73.8

Rib Slope : 0.961
Spine Slope : 3.453

Density/Spine Ratio : 0.569
Spine Intercept : -18.1

Caliper

Readings
Low Ref 3.5
High Ref 5.5
Gain: 4.5

Reference
6.4
15.0

Offset: -9.3

Compensated Neutron Calibration Report

Serial Number: 070808
Tool Model: Probe

PRE-SURVEY VERIFICATION

Detector	Readings	Measured	Target
Short Space	cps		
Long Space	cps	pu	pu

POST-SURVEY VERIFICATION

Detector	Readings	Measured	Target
Short Space	cps		
Long Space	cps	pu	pu

Gamma Ray Calibration Report

Serial Number: 070559
Tool Model: OPEN_GR
Performed: Wed Sep 19 15:58:00 2012

Calibrator Value: 1.0 GAPI

Background Reading: 0.0 cps
Calibrator Reading: 1.0 cps

Sensitivity: 0.3000 GAPI/cps