



**COMPLETION
& PRODUCTION
SERVICES CO.**

**COMPENSATED
DENSITY / NEUTRON
PE LOG**

Company	DIXON ENERGY, INC.	Location:	API # : 15-095-22264-0000	Other Services
Well	ROLF LAND #4		330' FSL & 3300' FEL	DIL/MEL
Field	BARKIN			
County	KINGMAN			
State	KANSAS			
Permanent Datum		GROUND LEVEL		Elevation 1785
Log Measured From		KELLY BUSHING 10' A.G.L.		K.B. 1795
Drilling Measured From		KELLY BUSHING		D.F. 1793
				G.L. 1785

Date	10/3/12		
Run Number	ONE		
Depth Driller	4780		
Depth Logger	4776		
Bottom Logged Interval	4752		
Top Log Interval	3400	2750-2600	
Casing Driller	8 5/8"@238'		
Casing Logger	234		
Bit Size	7 7/8"		
Type Fluid in Hole	CHEMICAL MUD	CHLORIDES 11,000 PPM	
Density / Viscosity	9.166		
pH / Fluid Loss	10.0/10.0		
Source of Sample	FLOWLINE		
Rm @ Meas. Temp	.800@86F		
Rmt @ Meas. Temp	.600@86F		
Rmc @ Meas. Temp	.960@86F		
Source of Rmf / Rmc	MEASUREMENT		
Rm @ BHT	.559@123F		
Time Circulation Stopped	3 HOURS		
Time Logger on Bottom	11:30 A.M.		
Maximum Recorded Temperature	123F		
Equipment Number	4010		
Location	HAYS, KANSAS		
Recorded By	JEFF LUEBBERS		
Witnessed By	RYAN DIXON		

<<< Fold Here >>>

All interpretations are opinions based on inferences from electrical or other measurements and we cannot and do not guarantee the accuracy or correctness of any interpretation, and we shall not, except in the case of gross or willful negligence on our part, be liable or responsible for any loss, costs, damages, or expenses incurred or sustained by anyone resulting from any interpretation made by any of our officers, agents or employees. These interpretations are also subject to our general terms and conditions set out in our current Price Schedule.

Comments

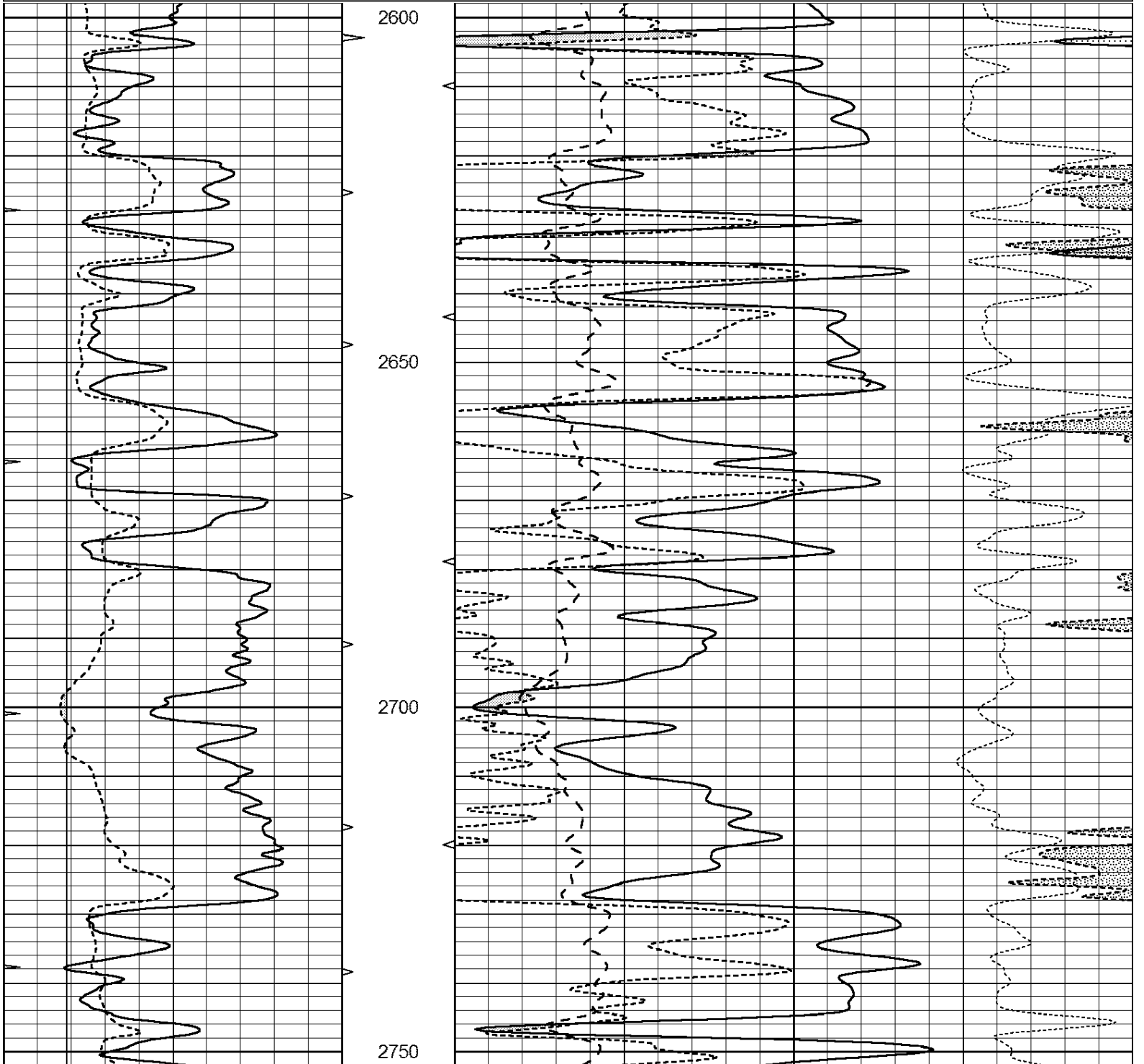
THANK YOU FOR USING "NABORS" HAYS, KANSAS (785) 628-6395
 DIRECTIONS
 NASHVILLE, KS., W. OF TOWN ON HWY 42 TO CURVE. 1S. TO "CEMETARY", 1 1/2W., N. INTO THEN
 BACK EAST



UPPER SECTION

Database File: 409687pe.db
 Dataset Pathname: pass3.5
 Presentation Format: ldt_neu
 Dataset Creation: Wed Oct 03 13:22:21 2012 by Calc Open-Cased 110302
 Charted by: Depth in Feet scaled 1:240

0	GAMMA RAY (GAPI)	150	ABHV	30	COMPENSATED DENSITY (pu)			-10	
6	CALIPER (in)	16	10 (ft3)	0	30	COMPENSATED NEUTRON (pu)			-10
0	MINMK	20	TBHV	0	PE	10	-0.25	CORRECTION (g/cc)	0.25
			0 (ft3)	10					



0	GAMMA RAY (GAPI)	150	ABHV	30	COMPENSATED DENSITY (pu)			-10	
6	CALIPER (in)	16	10 (ft3)	0	30	COMPENSATED NEUTRON (pu)			-10
0	MINMK	20	TBHV	0	PE	10	-0.25	CORRECTION (g/cc)	0.25
			0 (ft3)	10					

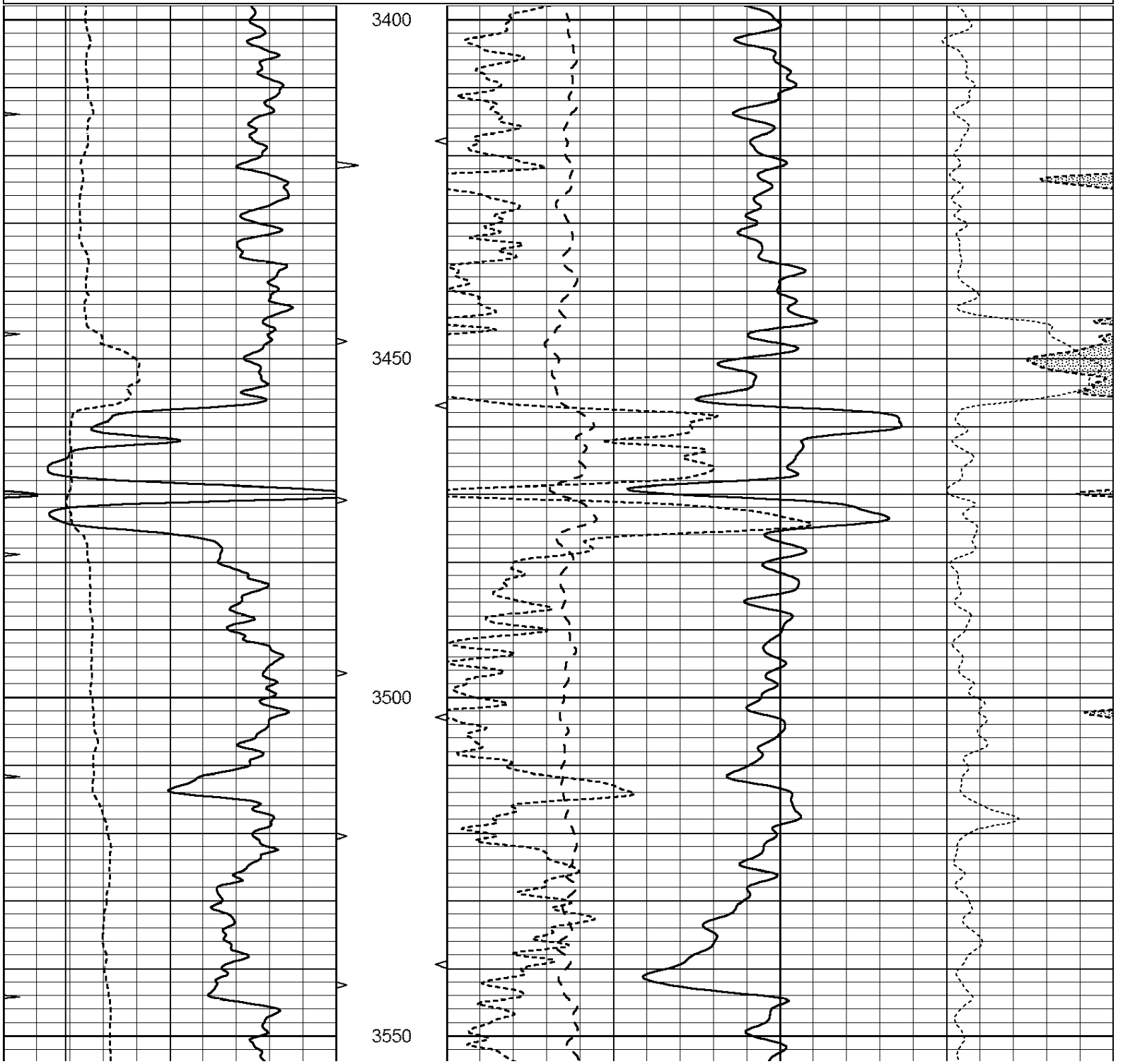


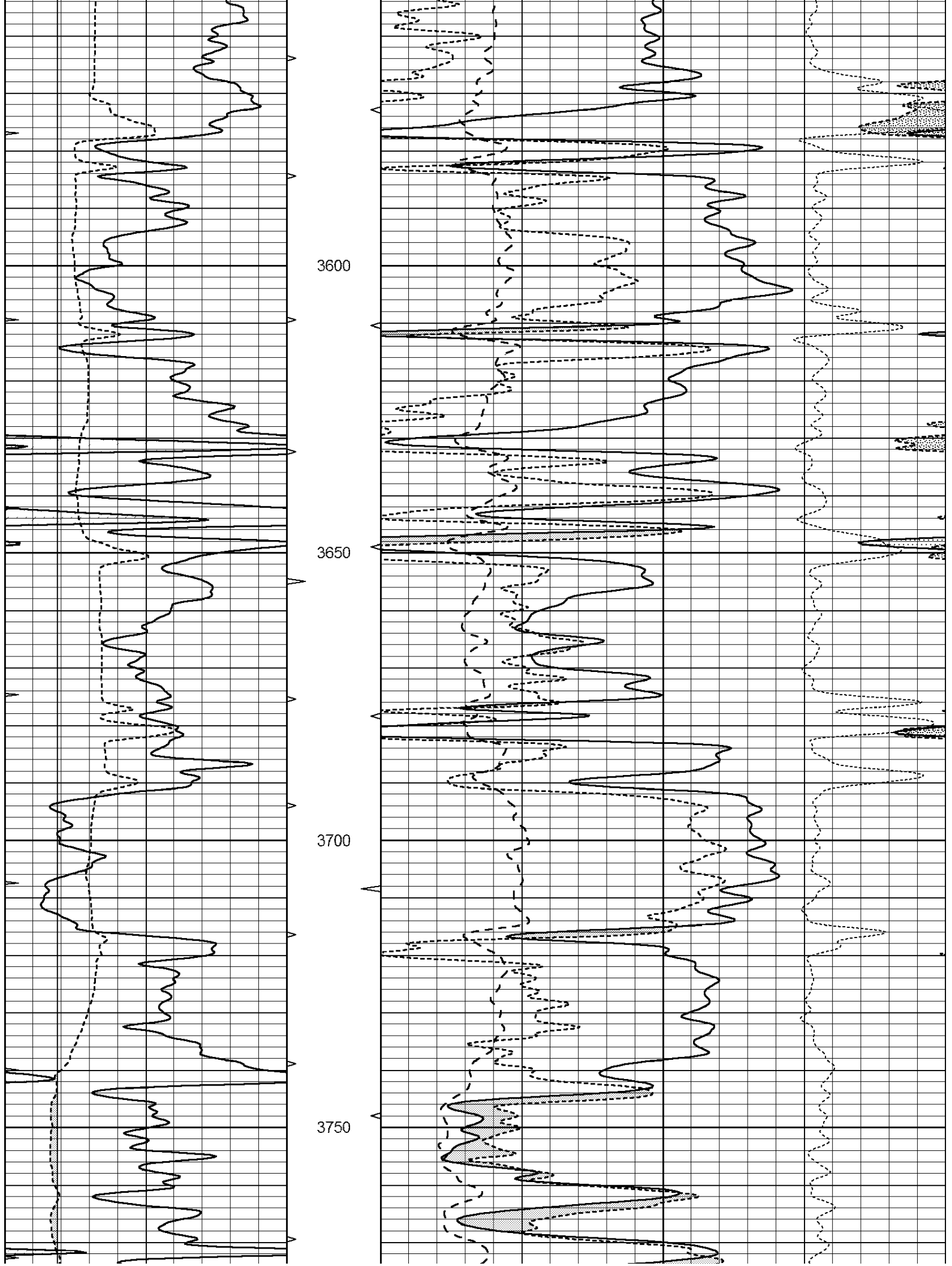
**COMPLETION
& PRODUCTION
SERVICES CO.**

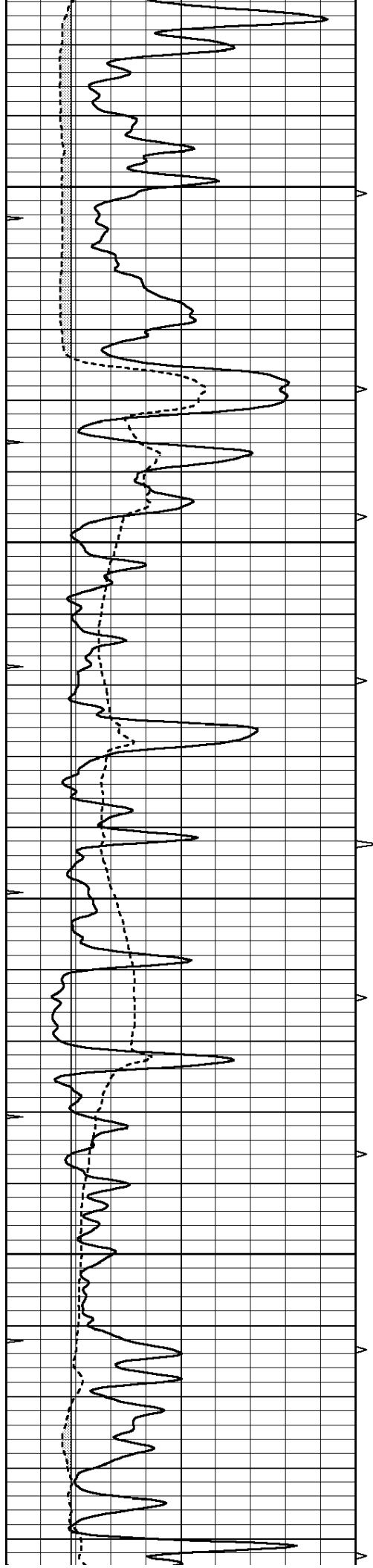
MAIN SECTION

Database File: 409687pe.db
 Dataset Pathname: pass3.7
 Presentation Format: ldt_neu
 Dataset Creation: Wed Oct 03 14:02:46 2012
 Charted by: Depth in Feet scaled 1:240

0	GAMMA RAY (GAPI)	150	ABHV	30	COMPENSATED DENSITY (pu)	-10			
6	CALIPER (in)	16	10 (ft3)	0	30	COMPENSATED NEUTRON (pu)	-10		
0	MINMK	20	TBHV	0	PE	10	-0.25	CORRECTION (g/cc)	0.25
			0 (ft3)	10					





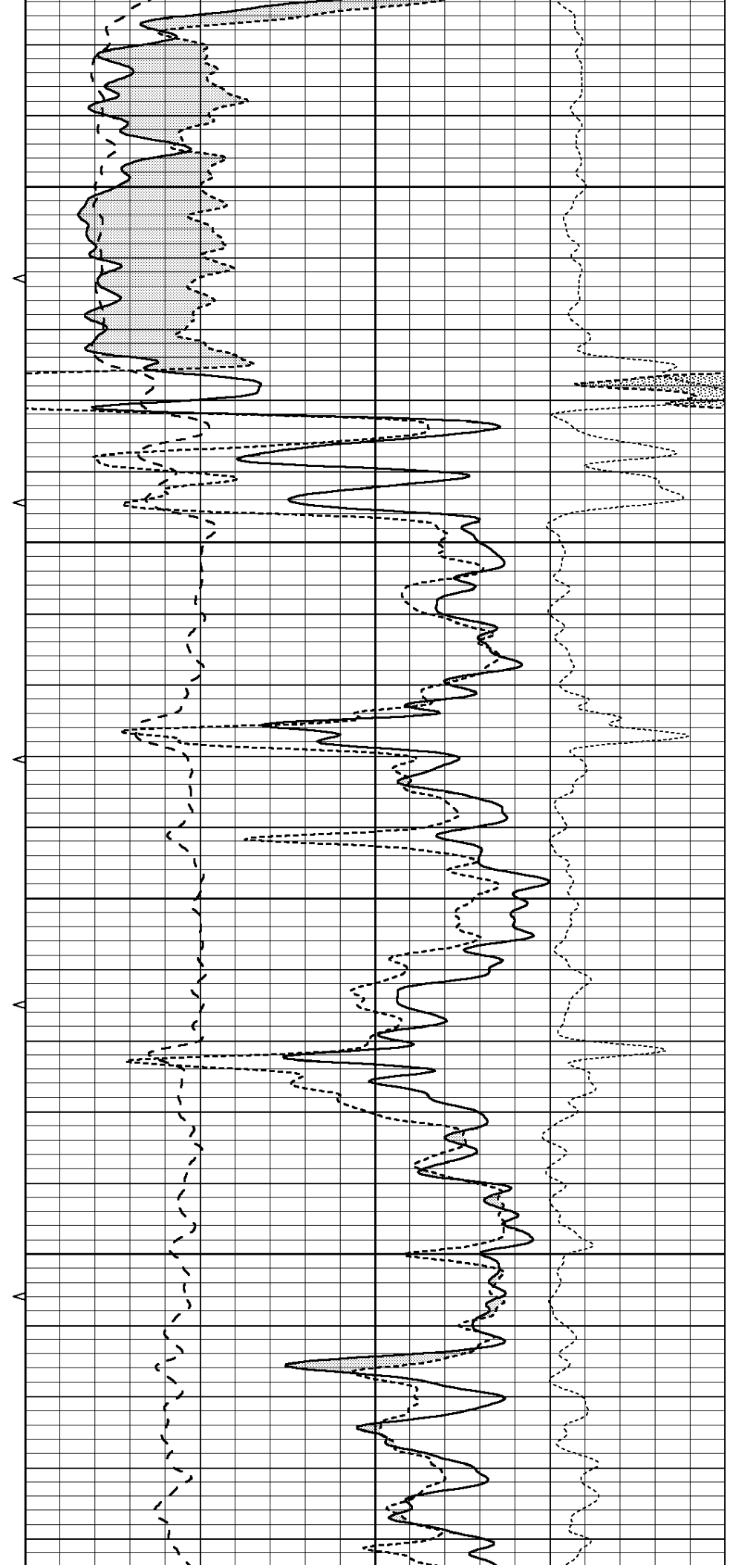


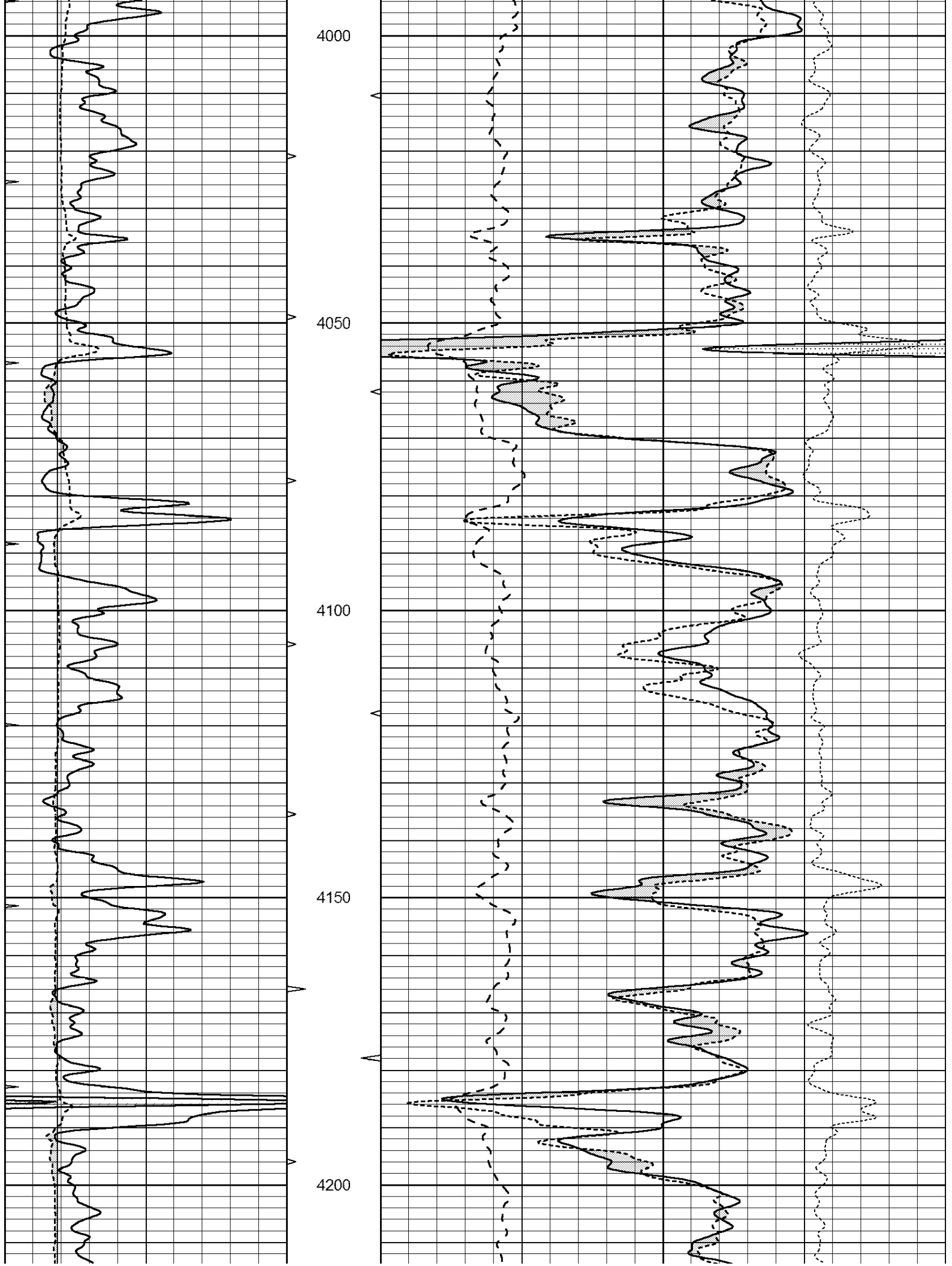
3800

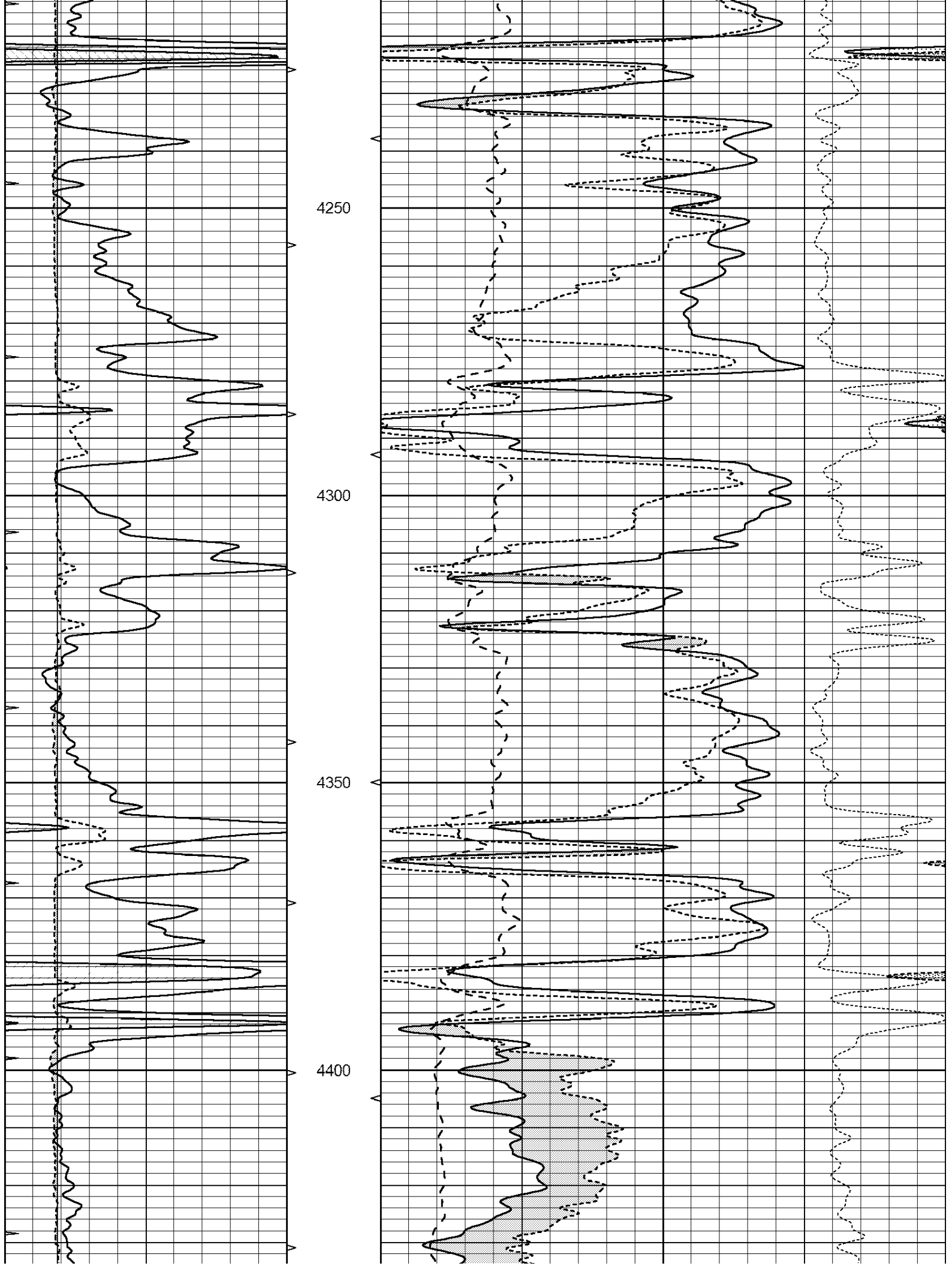
3850

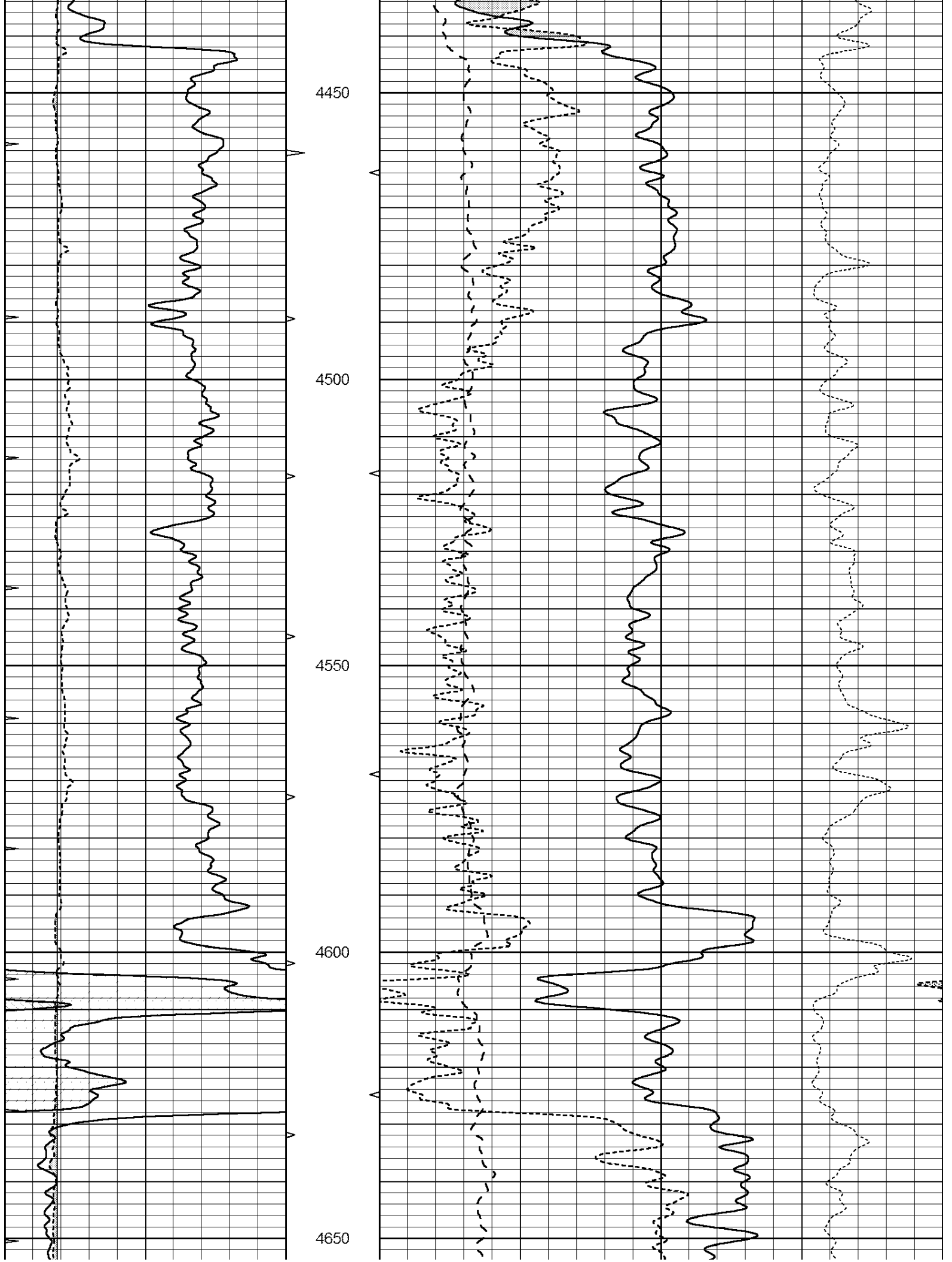
3900

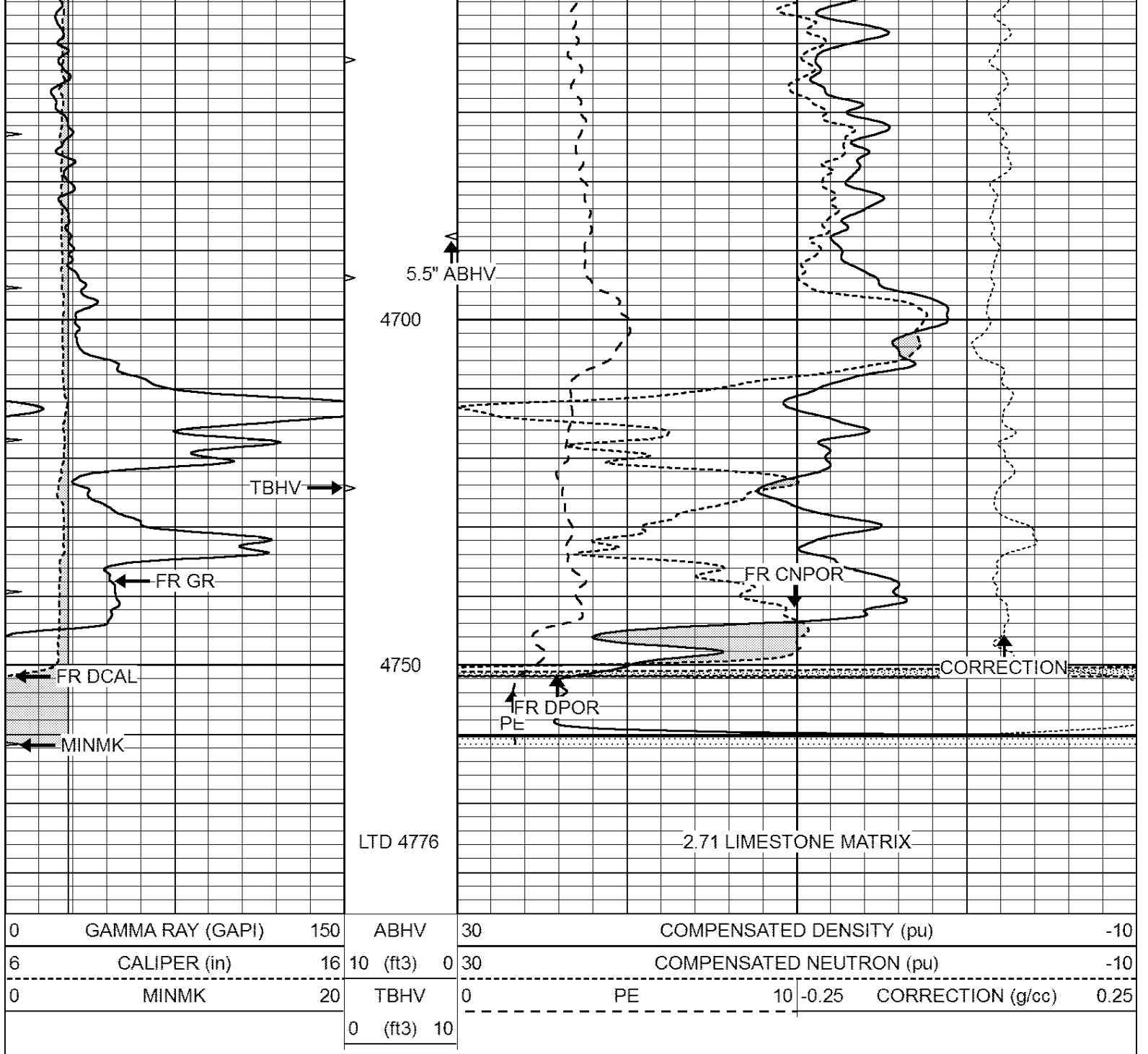
3950









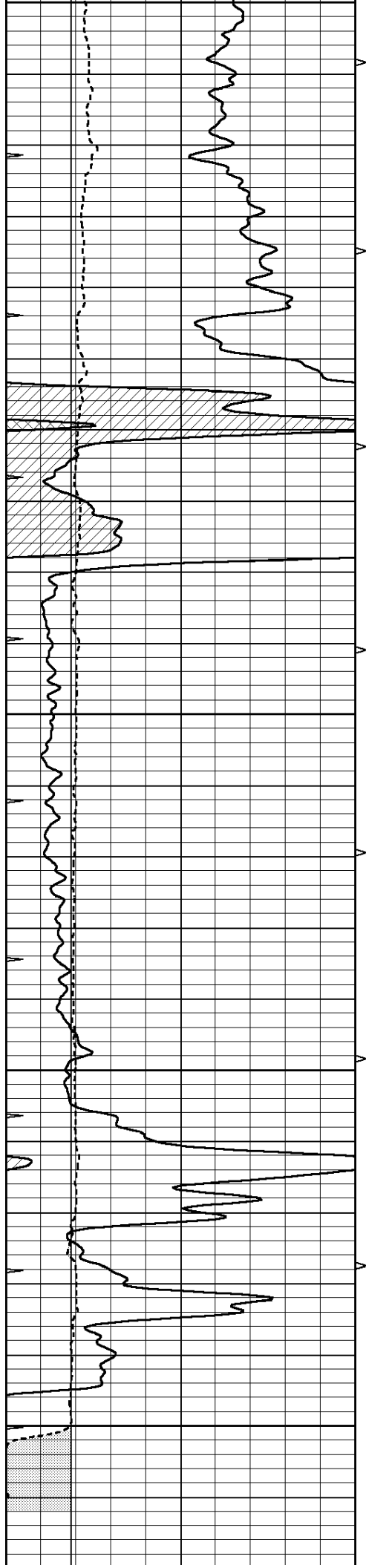


**COMPLETION
& PRODUCTION
SERVICES CO.**

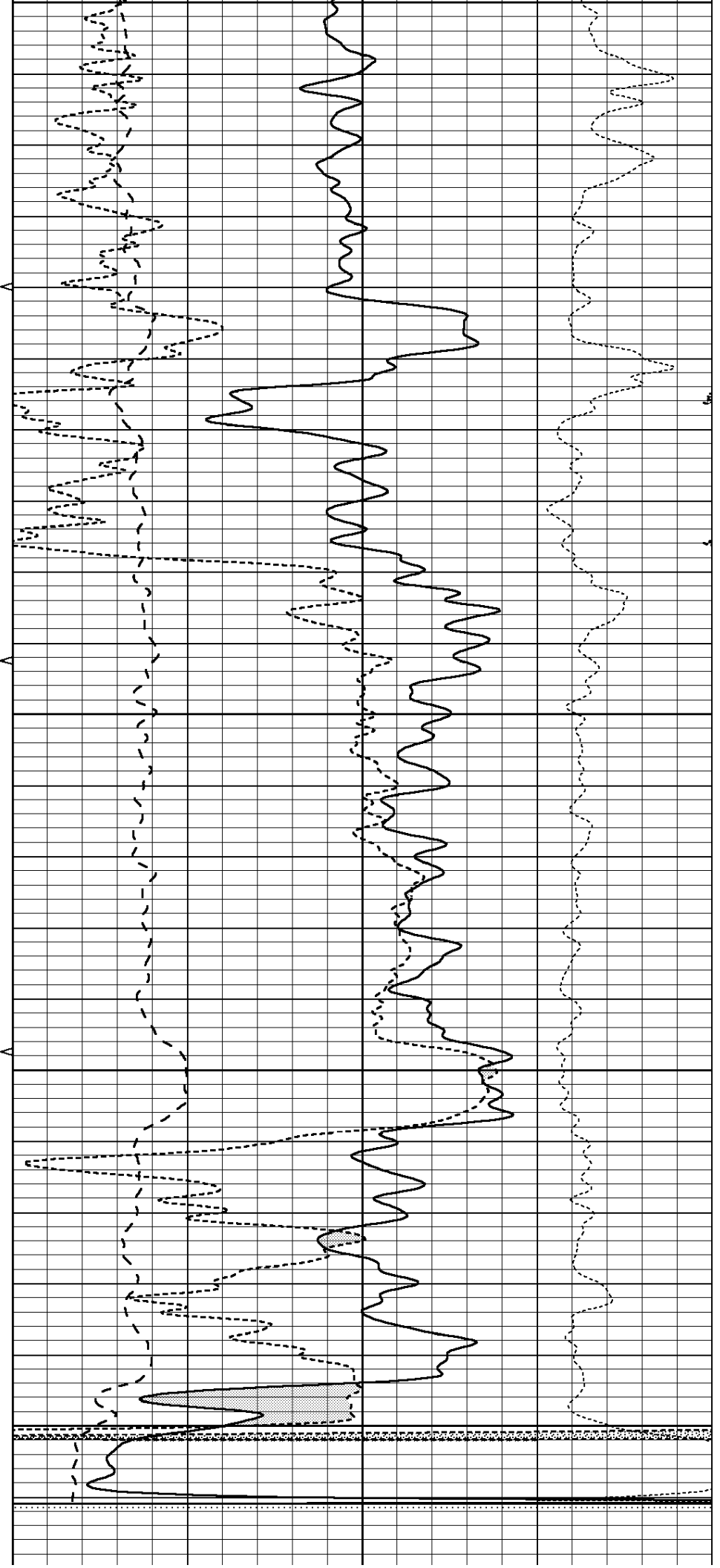
REPEAT SECTION

Database File: 409687pe.db
 Dataset Pathname: pass2.1
 Presentation Format: ldt_neu
 Dataset Creation: Wed Oct 03 13:20:23 2012 by Calc Open-Cased 110302
 Charted by: Depth in Feet scaled 1:240

0	GAMMA RAY (GAPI)	150	ABHV	30	COMPENSATED DENSITY (pu)	-10			
6	CALIPER (in)	16	10 (ft3)	0	30	COMPENSATED NEUTRON (pu)	-10		
0	MINMK	20	TBHV	0	PE	10	-0.25	CORRECTION (g/cc)	0.25
			0 (ft3)	10					



4550
4600
4650
4700
4750



0	GAMMA RAY (GAPI)	150	ABHV	30	COMPENSATED DENSITY (pu)				-10	
6	CALIPER (in)	16	10 (ft3)	0	30	COMPENSATED NEUTRON (pu)				-10
0	MINMK	20	TBHV	0	PE	10	-0.25	CORRECTION (g/cc)	0.25	
			0 (ft3)	10						

Calibration Report

Database File: 409687pe.db
 Dataset Pathname: pass3.7
 Dataset Creation: Wed Oct 03 14:02:46 2012

Dual Induction Calibration Report

Serial-Model: DIL3-GEAR
 Performed: Mon Oct 01 18:43:03 2012

Loop:	Readings				References			Results	
	Air	Loop			Air	Loop		m	b
Deep	0.011	0.656	V	0.000	400.000	mmho/m	640.000	8.000	
Medium	0.013	0.740	V	0.000	462.500	mmho/m	700.000	-6.000	
Internal:	Zero	Cal		Zero	Cal		m	b	
Deep	0.002	0.645	V	0.000	400.000	mmho/m	622.059	-1.071	
Medium	0.007	0.740	V	0.000	462.500	mmho/m	631.393	-4.555	

Litho Density Calibration Report
 Serial: 006 Model: PRB
 Performed Sun Aug 15 09:48:41 2010

Litho Density Calibration

	Background	Magnesium	Aluminum	Sandstone	
Window 1	1686.6	11612.8	3932.0	12718.8	cps
Window 2	1531.4	9204.7	3267.8	9851.9	cps
Window 3	1198.3	4733.6	1952.5	4920.6	cps
Window 4	317.3	321.2	325.9	303.6	cps
Long Space	0.0	7673.3	1736.4	8320.4	cps
Short Space	1.7	2548.5	1657.2	2628.8	cps
Rho		1.7100	2.5900	1.3800	g/cc
Pe			2.5700	1.5500	
Rib Angle	: 43.8	Rib Slope	: 0.961	Density/Spine Ratio	: 0.569
Spine Angle	: 73.8	Spine Slope	: 3.453	Spine Intercept	: -18.1

Caliper

	Readings	Reference	
Low Ref	3.5	6.4	
High Ref	5.5	15.0	
	Gain: 4.5		Offset: -9.3

Compensated Neutron Calibration Report

Serial Number: 070808
 Tool Model: Probe

PRE-SURVEY VERIFICATION

Detector	Readings	Measured	Target
Short Space	cps		
Long Space	cps	pu	pu

POST-SURVEY VERIFICATION			
Detector	Readings	Measured	Target
Short Space	cps		
Long Space	cps	pu	pu

Gamma Ray Calibration Report			
------------------------------	--	--	--

Serial Number:	070559		
Tool Model:	OPEN_GR		
Performed:	Wed Sep 19 15:58:00 2012		
Calibrator Value:	1.0	GAPI	
Background Reading:	0.0	cps	
Calibrator Reading:	1.0	cps	
Sensitivity:	0.3000	GAPI/cps	