



**COMPLETION
& PRODUCTION
SERVICES CO.**

**MICRO
LOG**

Company	DIXON ENERGY, INC.	Company	DIXON ENERGY, INC.
Well	ROLF LAND #4	Well	ROLF LAND #4
Field	BARKIN	Field	BARKIN
County	KINGMAN	County	KINGMAN
State	KANSAS	State	KANSAS
Location:	AP1 # : 15-095-22264-0000	Other Services	CDL/CNL/PE DIL
Permanent Datum	GROUND LEVEL	Elevation	1785
Log Measured From	KELLY BUSHING 10' A.G.L.	K.B.	1795
Drilling Measured From	KELLY BUSHING	D.F.	1793
		G.L.	1785
	SEC 18 TWP 30S RGE 10W		

Date	10/3/12
Run Number	TWO
Depth Driller	4780
Depth Logger	4776
Bottom Logged Interval	4774
Top Log Interval	3400
Casing Driller	8 5/8"@238'
Casing Logger	234
Bit Size	7 7/8"
Type Fluid in Hole	CHEMICAL MUD
Density / Viscosity	9.166
pH / Fluid Loss	10.0/10.0
Source of Sample	FLOWLINE
Rm @ Meas. Temp	.800@86F
Rmt @ Meas. Temp	.600@86F
Rmc @ Meas. Temp	.960@86F
Source of Rmf / Rmc	MEASUREMENT
Rm @ BHT	.559@123F
Time Circulation Stopped	5.5 HOURS
Time Logger on Bottom	11:30 A.M.
Maximum Recorded Temperature	123F
Equipment Number	4010
Location	HAYS, KANSAS
Recorded By	JEFF LUEBBERS
Witnessed By	RYAN DIXON

<<< Fold Here >>>

All interpretations are opinions based on inferences from electrical or other measurements and we cannot and do not guarantee the accuracy or correctness of any interpretation, and we shall not, except in the case of gross or willful negligence on our part, be liable or responsible for any loss, costs, damages, or expenses incurred or sustained by anyone resulting from any interpretation made by any of our officers, agents or employees. These interpretations are also subject to our general terms and conditions set out in our current Price Schedule.

Comments

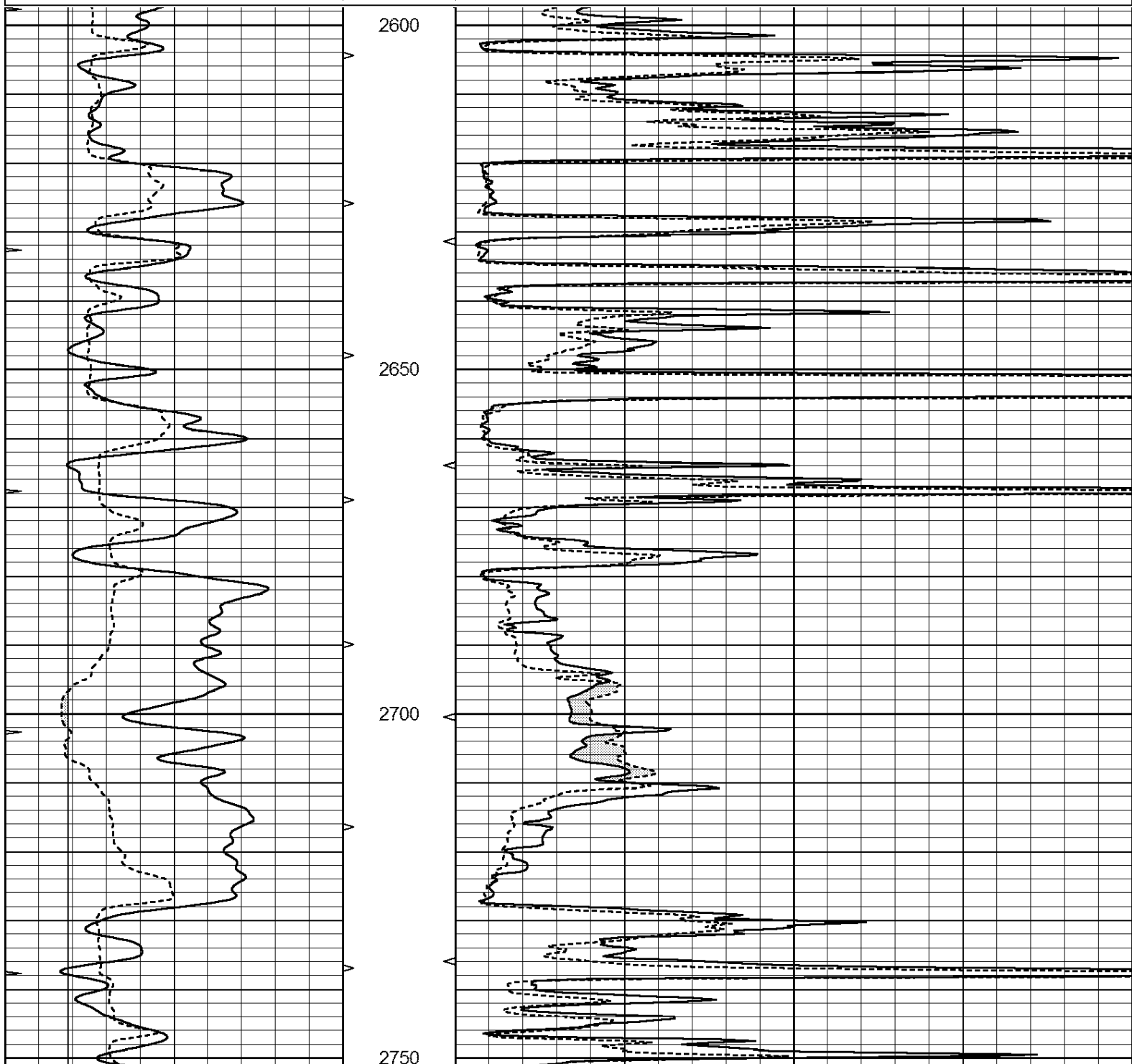
THANK YOU FOR USING "NABORS" HAYS, KANSAS (785) 628-6395
DIRECTIONS
NASHVILLE, KS., W. OF TOWN ON HWY 42 TO CURVE. 1S. TO "CEMETARY", 1 1/2W., N. INTO THEN
BACK EAST



UPPER SECTION

Database File: 409687pe.db
 Dataset Pathname: pass8.1
 Presentation Format: micro
 Dataset Creation: Wed Oct 03 15:04:05 2012 by Calc Open-Cased 110302
 Charted by: Depth in Feet scaled 1:240

0	GAMMA RAY (GAPI)	150	ABHV	0	MEL1.5 (Ohm-m)	40
6	CALIPER (in)	16	10 (ft3)	0 0	MEL2.0 (Ohm-m)	40
0	MINMK	20	TBHV			
			0 (ft3)	10		



0	GAMMA RAY (GAPI)	150	ABHV	0	MEL1.5 (Ohm-m)	40
6	CALIPER (in)	16	10 (ft3)	0 0	MEL2.0 (Ohm-m)	40
0	MINMK	20	TBHV			
			0 (ft3)	10		

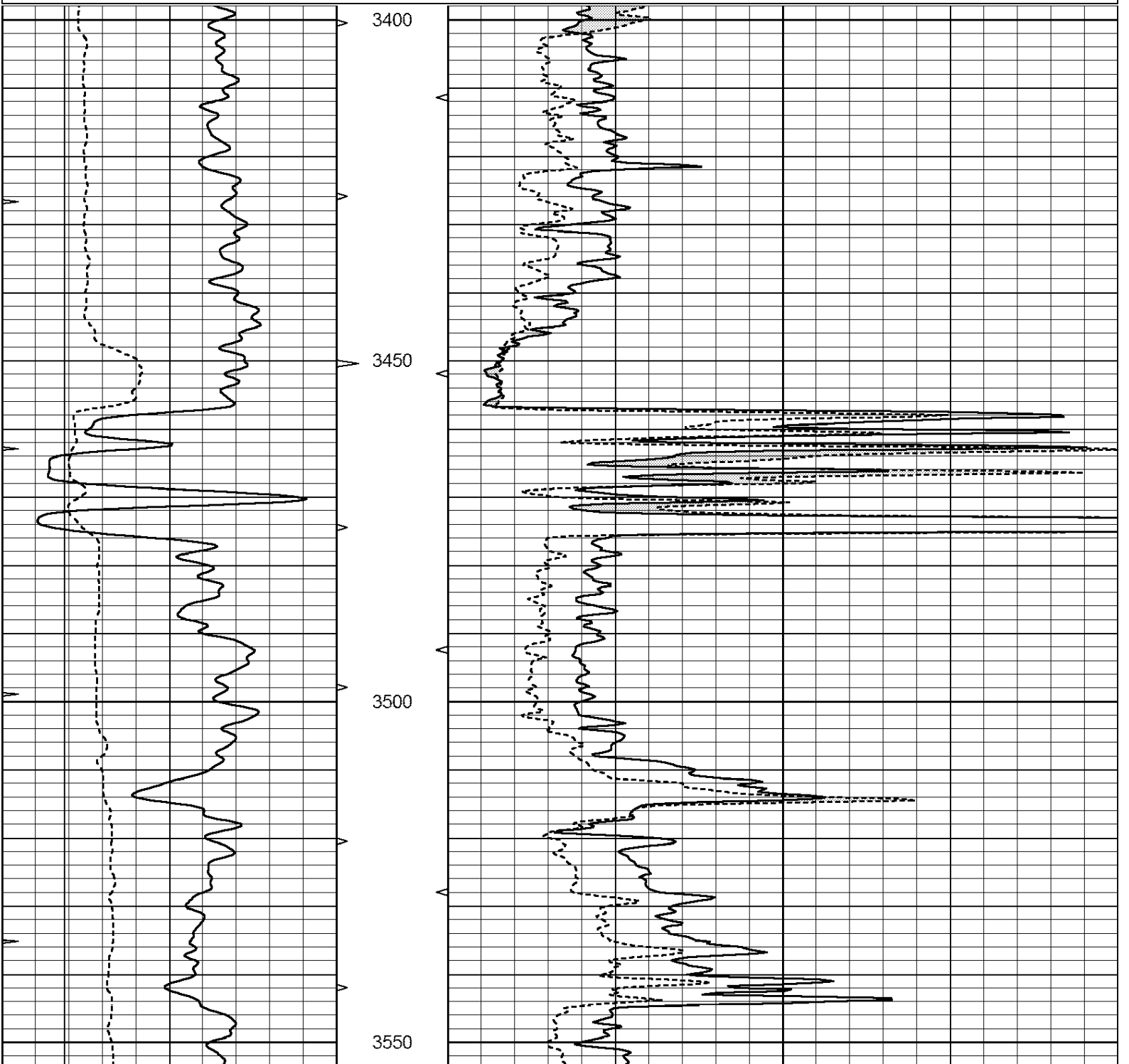


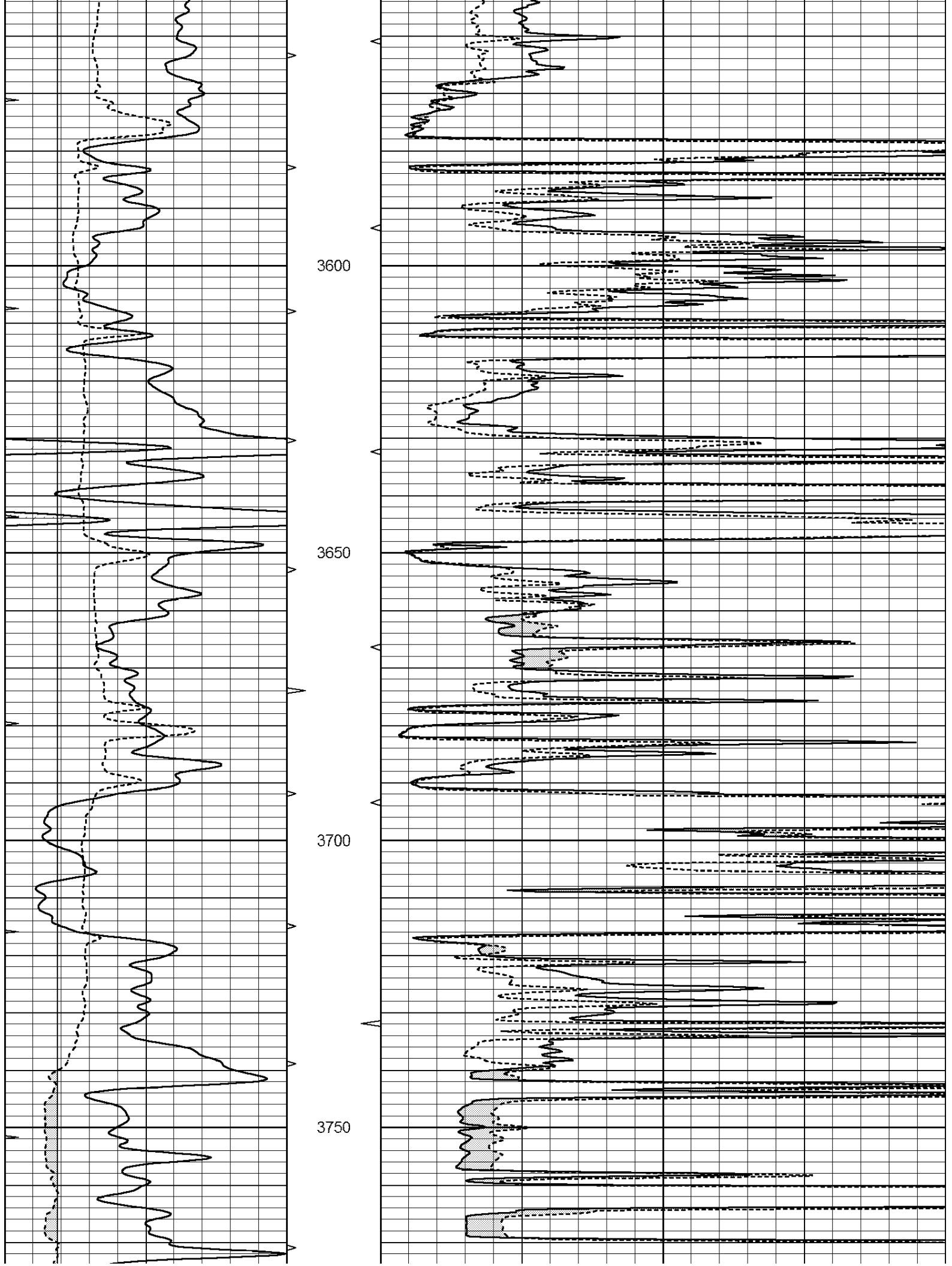
**COMPLETION
& PRODUCTION
SERVICES CO.**

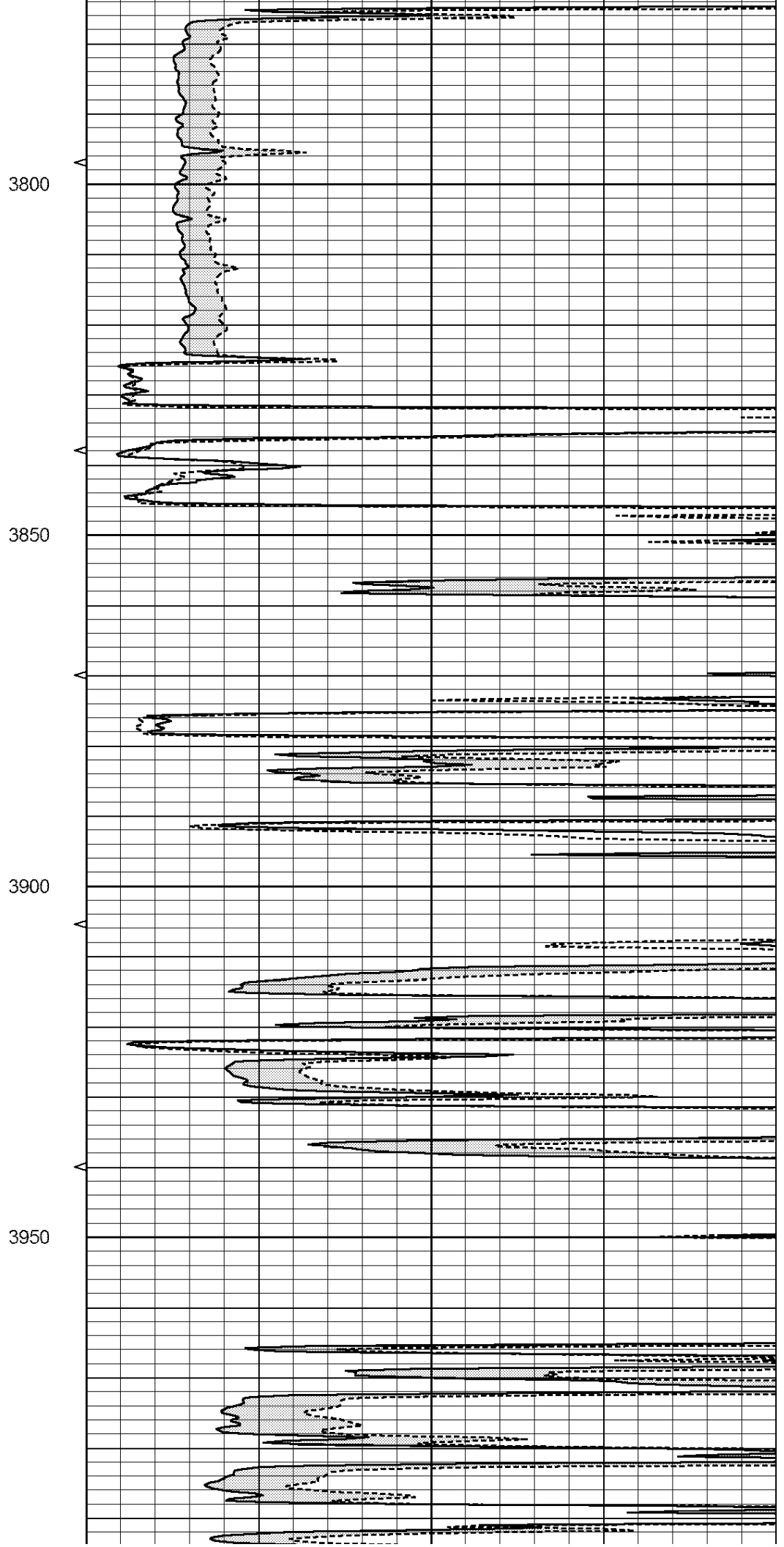
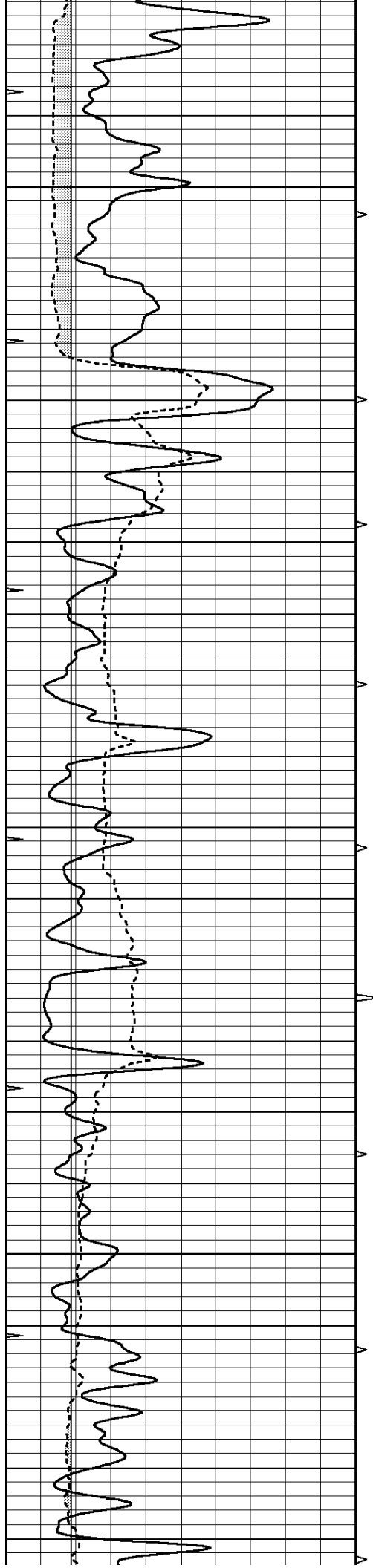
MAIN SECTION

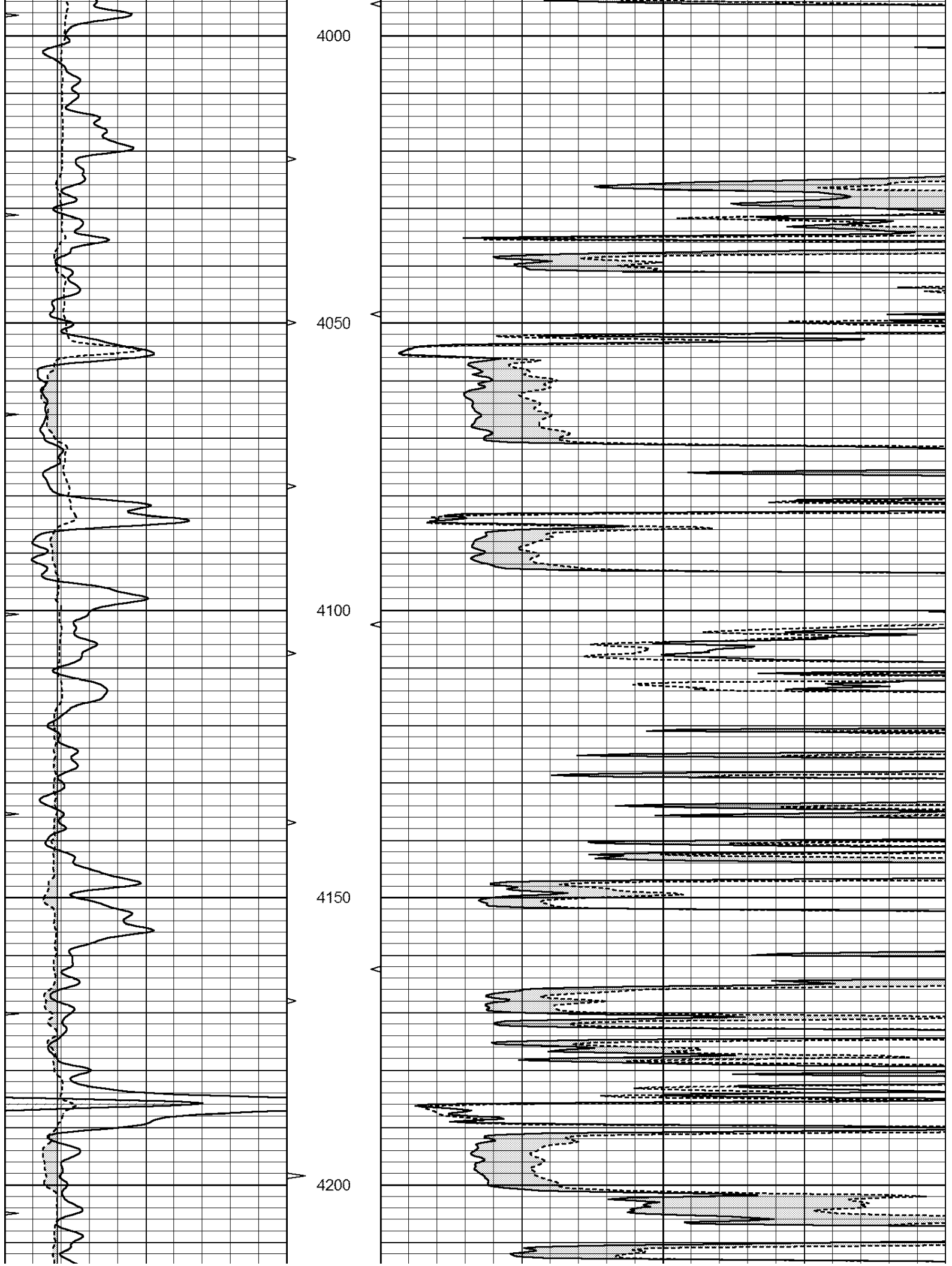
Database File: 409687pe.db
 Dataset Pathname: pass7.5
 Presentation Format: micro
 Dataset Creation: Wed Oct 03 14:53:16 2012 by Calc Open-Cased 110302
 Charted by: Depth in Feet scaled 1:240

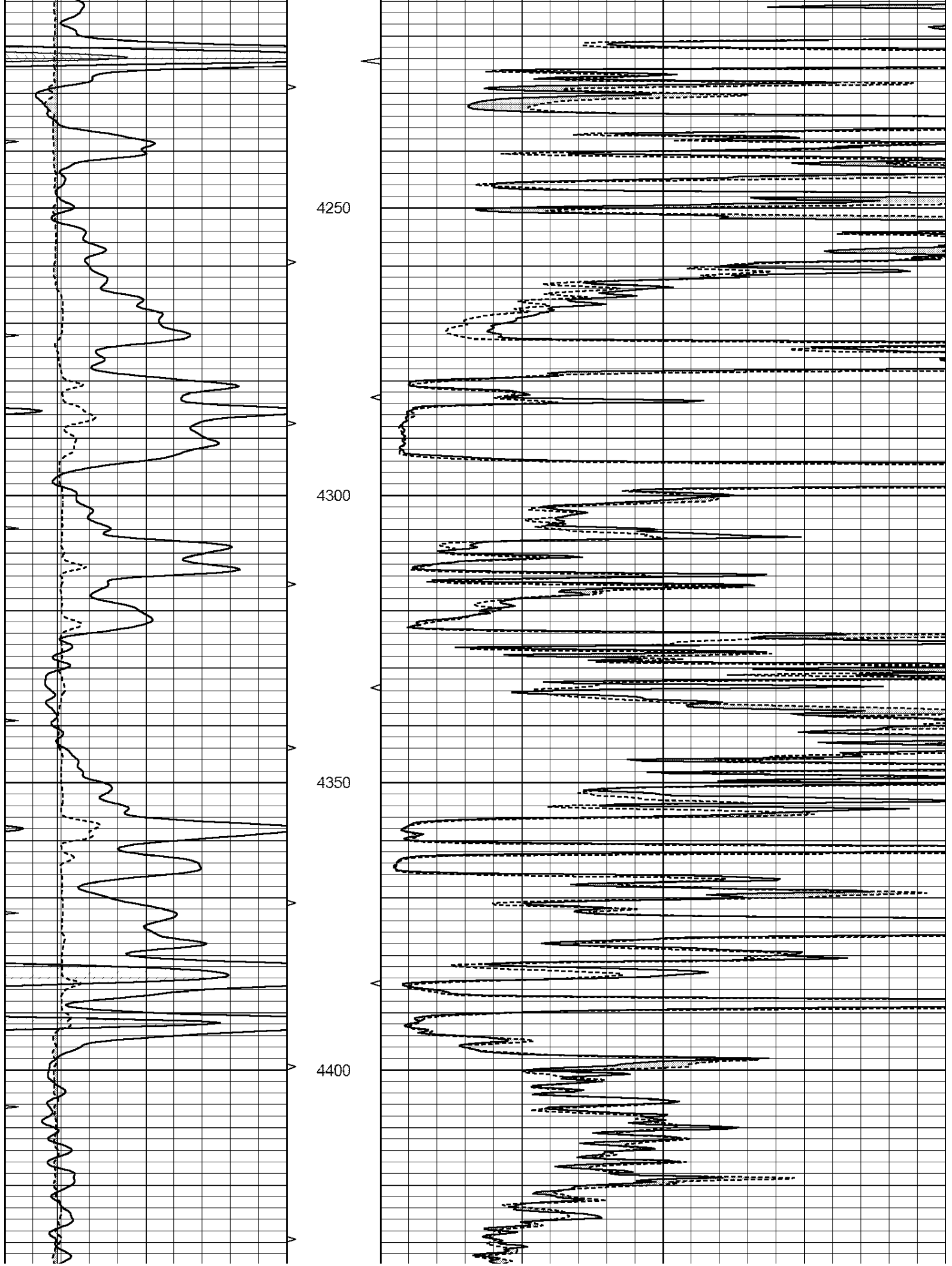
0	GAMMA RAY (GAPI)	150	ABHV	0	MEL1.5 (Ohm-m)	40
6	CALIPER (in)	16	10 (ft3)	0	MEL2.0 (Ohm-m)	40
0	MINMK	20	TBHV			
			0 (ft3)	10		

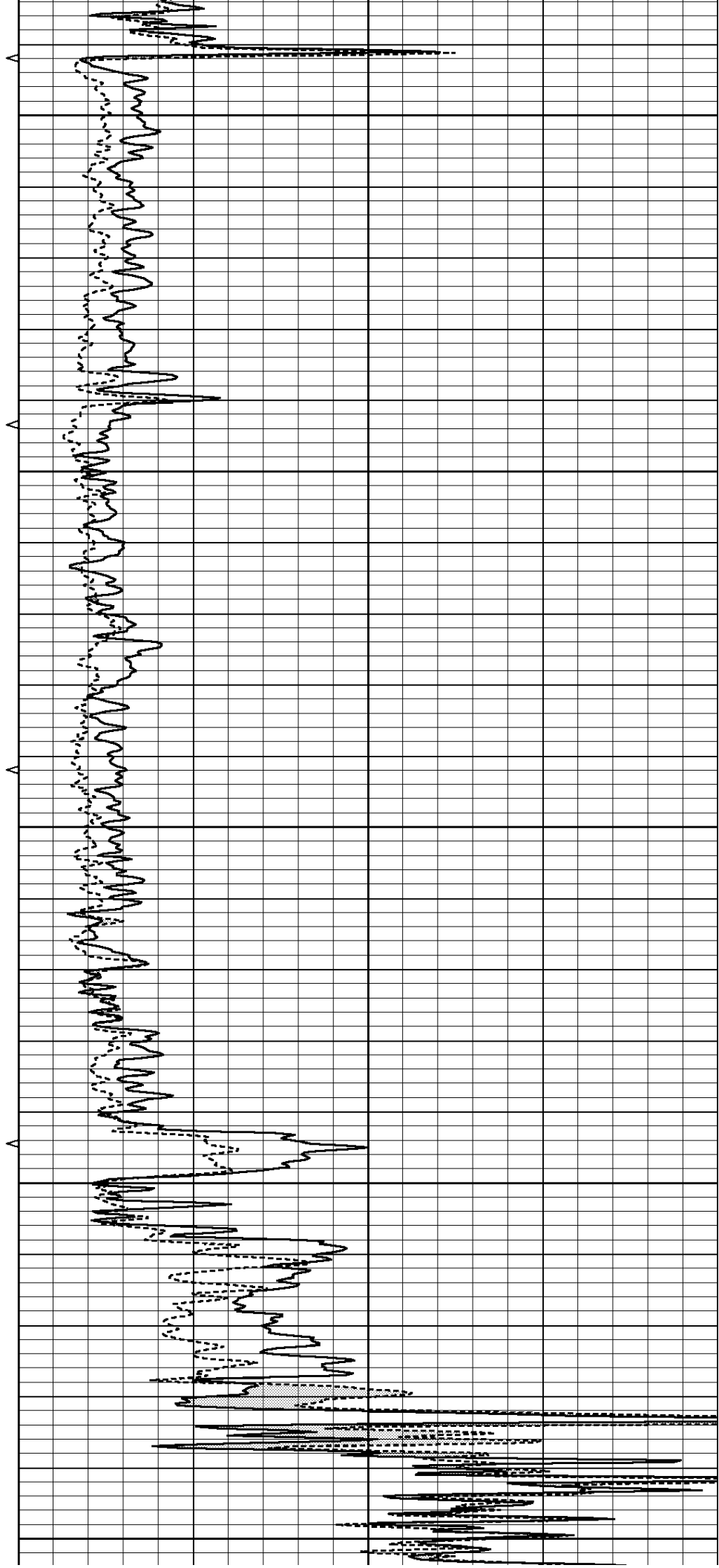
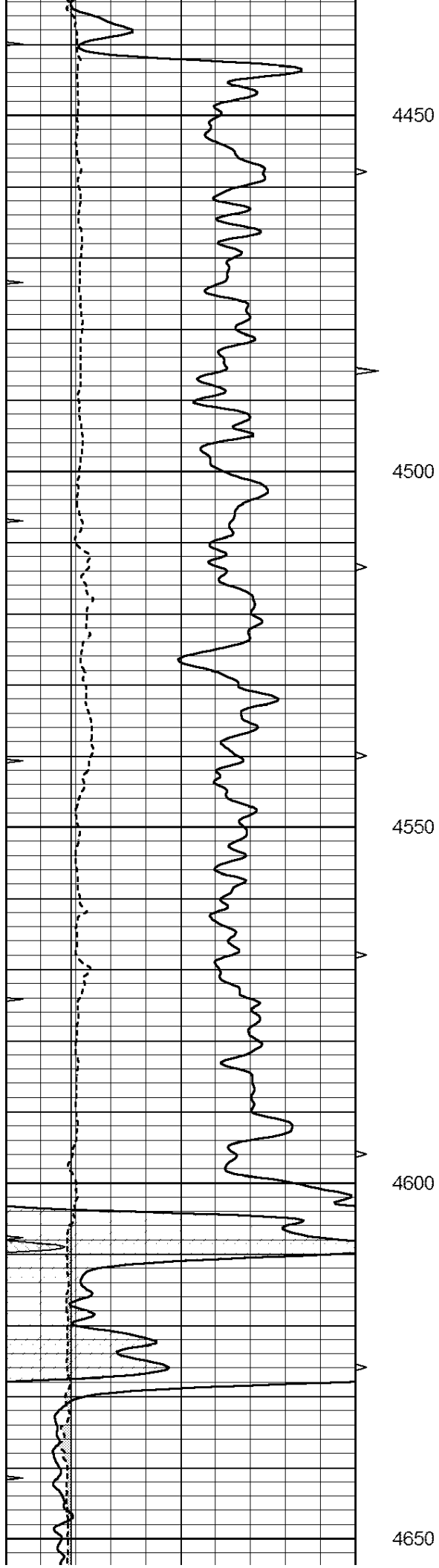


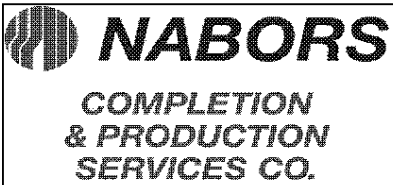
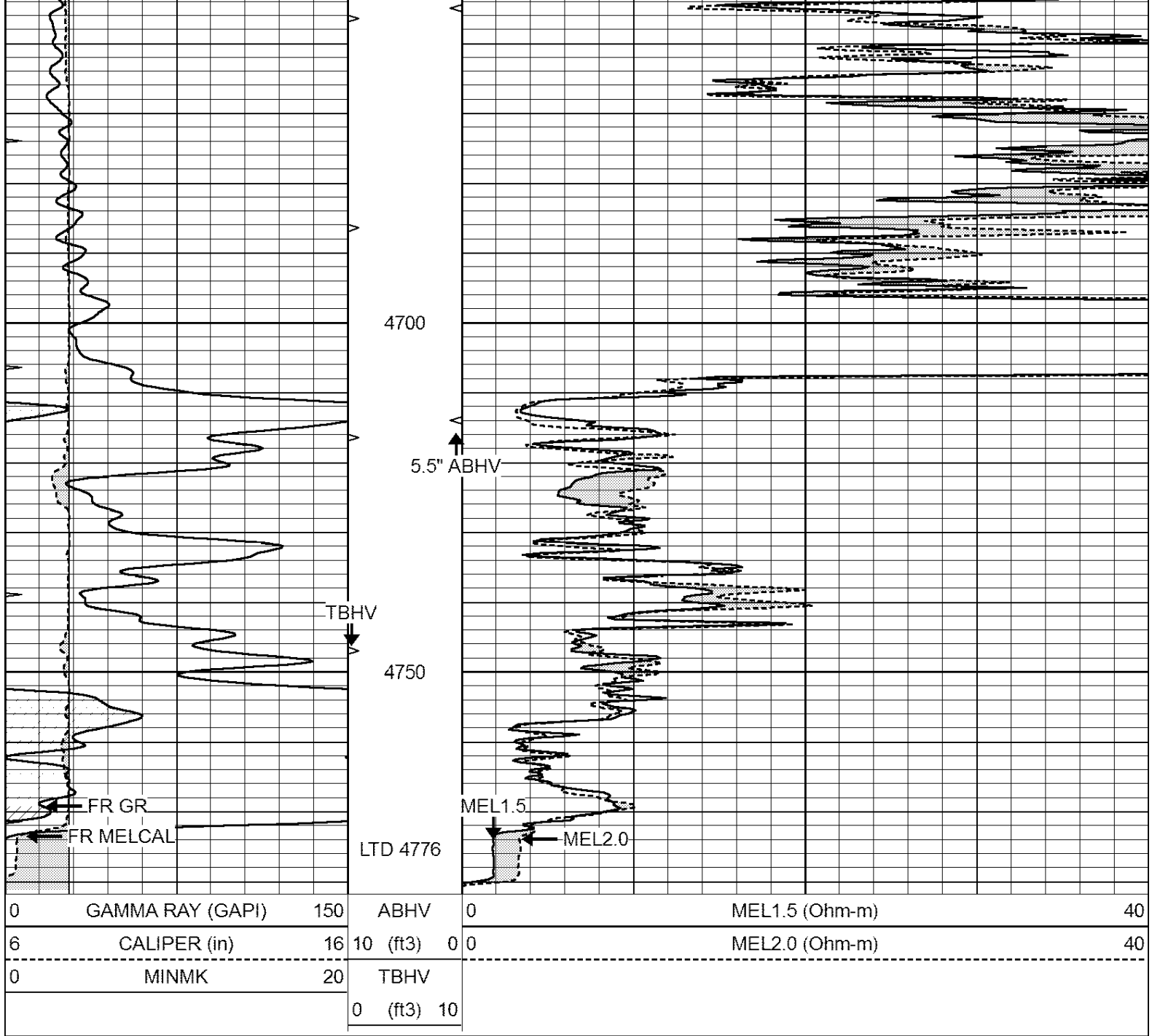








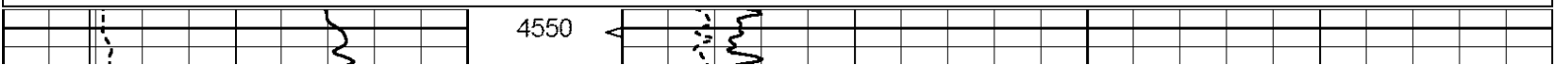


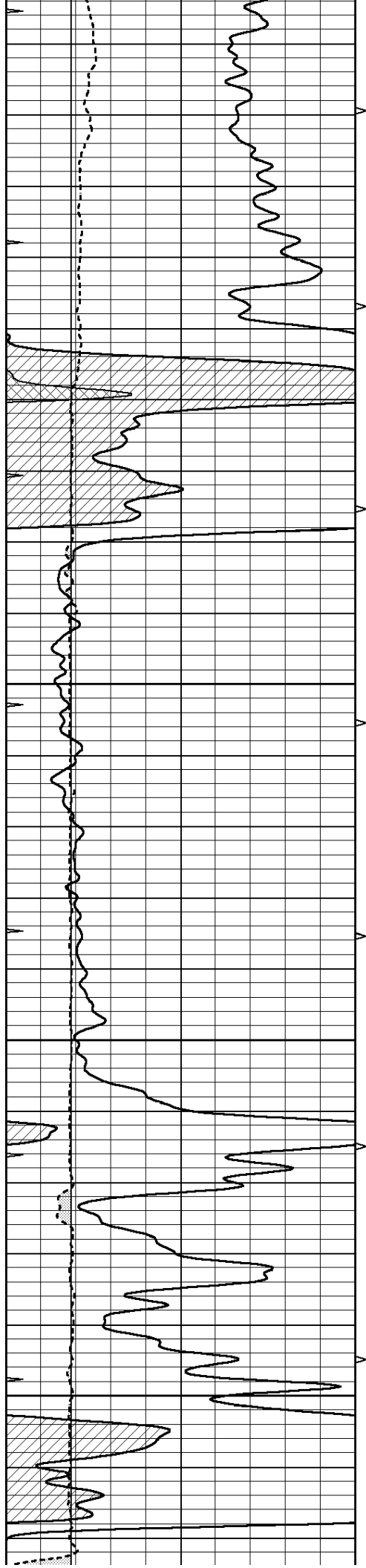


REPEAT SECTION

Database File: 409687pe.db
 Dataset Pathname: pass6.3
 Presentation Format: micro
 Dataset Creation: Wed Oct 03 14:14:26 2012 by Calc Open-Cased 110302
 Charted by: Depth in Feet scaled 1:240

0	GAMMA RAY (GAPI)	150	ABHV	0	MEL1.5 (Ohm-m)	40
6	CALIPER (in)	16	10 (ft3)	0 0	MEL2.0 (Ohm-m)	40
0	MINMK	20	TBHV			
			0 (ft3)	10		



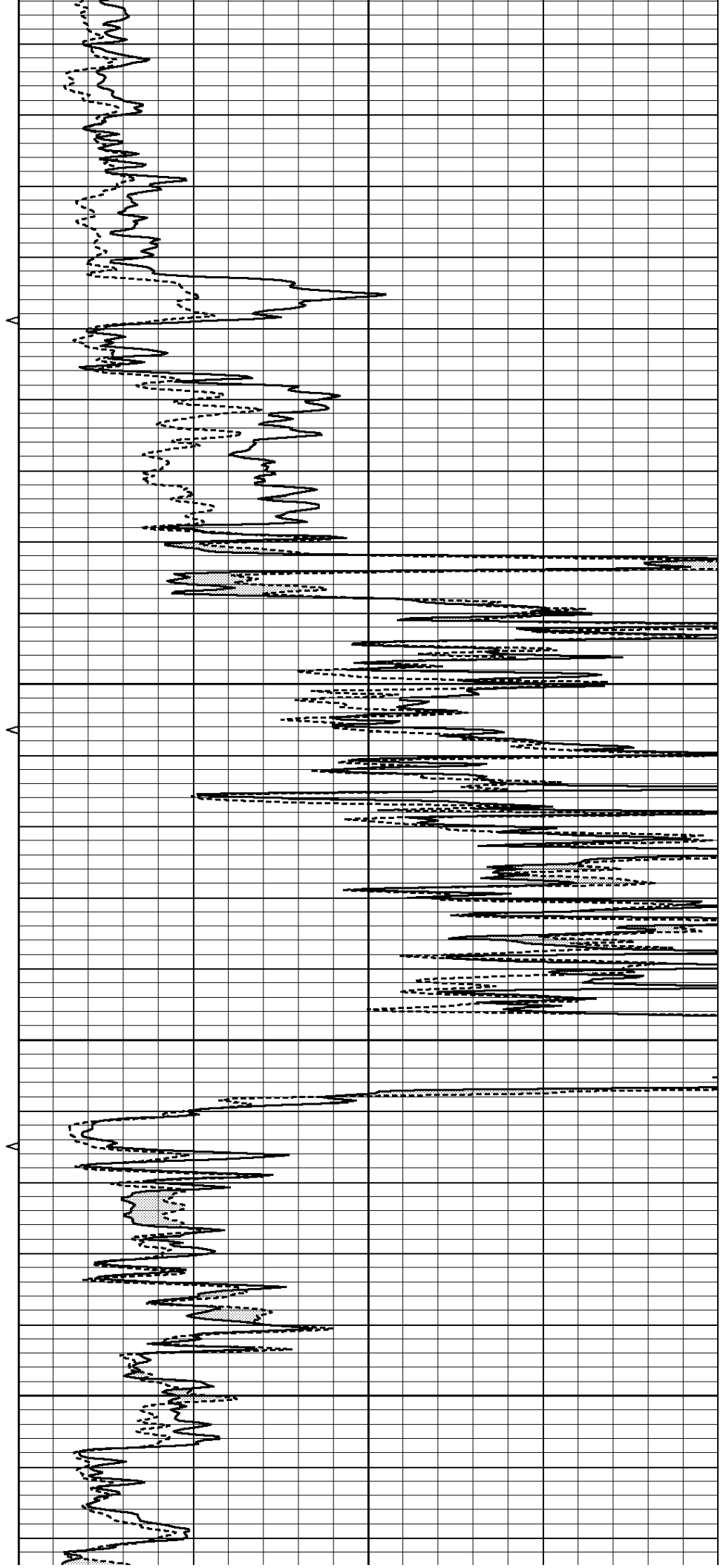


4600

4650

4700

4750



0	GAMMA RAY (GAPI)	150	ABHV	0	MEL1.5 (Ohm-m)	40
6	CALIPER (in)	16	10 (ft3)	0	MEL2.0 (Ohm-m)	40
0	MINMK	20	TBHV			
			0 (ft3)	10		

Calibration Report

Database File: 409687pe.db
Dataset Pathname: pass7.5
Dataset Creation: Wed Oct 03 14:53:16 2012 by Calc Open-Cased 110302

MICRO Calibration Report

Serial Number:	MICRO5	
Tool Model:	PROBE	
Performed:	Wed Oct 03 13:36:18 2012	
Caliper Calibration:	Gain=4.100	Offset=-9.010
	Low Cal	High Cal
References	7.800	16.000
Readings	4.100	6.100
1.5" Calibration:	Gain=36.000	Offset=-0.500
	Low Cal	High Cal
References	0.000	20.000
Readings	-0.002	0.981
2" Calibration:	Gain=45.000	Offset=-0.400
	Low Cal	High Cal
References	0.000	20.000
Readings	0.002	0.898

Gamma Ray Calibration Report

Serial Number:	GR4	
Tool Model:	OPEN	
Performed:	Wed Oct 03 13:56:10 2012	
Calibrator Value:	200.0	GAPI
Background Reading:	0.0	cps
Calibrator Reading:	189.0	cps
Sensitivity:	1.3000	GAPI/cps