



Dual Induction Log

DIGITAL LOG (785) 625-3858

API No.	15-145-21635-00-00	
Company	L.D. Drilling, Inc.	
Well	Jane No. 1	
Field	Garfield	
County	Pawnee	State
		Kansas
Location	S/2 - N/2 - SW 1650' FSL & 1320' FWL	
Sec: 4	Twp: 23 S	Rge: 17 W
Other Services	CNL/CDL	

Permanent Datum	Ground Level	Elevation 2060
Log Measured From	Kelly Bushing	5 Ft. Above Perm. Datum
Drilling Measured From	Kelly Bushing	
Date		3/4/2011
Run Number		One
Depth Driller		4360
Depth Logger		4359
Bottom Logged Interval		4358
Top Log Interval		300
Casing Driller		8.625 @ 349
Casing Logger		352
Bit Size		7.875
Type Fluid in Hole		Chemical
Salinity, ppm CL		20,000
Density / Viscosity		9.1 52
pH / Fluid Loss		8.0 15.8
Source of Sample		Flowline
Rm @ Meas. Temp		0.35 @ 65
Rmf @ Meas. Temp		0.26 @ 65
Rmc @ Meas. Temp		0.47 @ 65
Source of Rmf / Rmc		Charts
Rm @ BHT		0.19 @ 120
Operating Rig Time		2 Hours
Max Rec. Temp. F		120
Equipment Number		15
Location		Hays
Recorded By		B. Becker
Witnessed By		Kim Shoemaker

<<< Fold Here >>>

All interpretations are opinions based on inferences from electrical or other measurements and we cannot and do not guarantee the accuracy or correctness of any interpretation, and we shall not, except in the case of gross or willful negligence on our part, be liable or responsible for any loss, costs, damages, or expenses incurred or sustained by anyone resulting from any interpretation made by any of our officers, agents or employees. These interpretations are also subject to our general terms and conditions set out in our current Price Schedule.

Comments

Thank you for using Log-Tech, Inc.
 (785) 625-3858

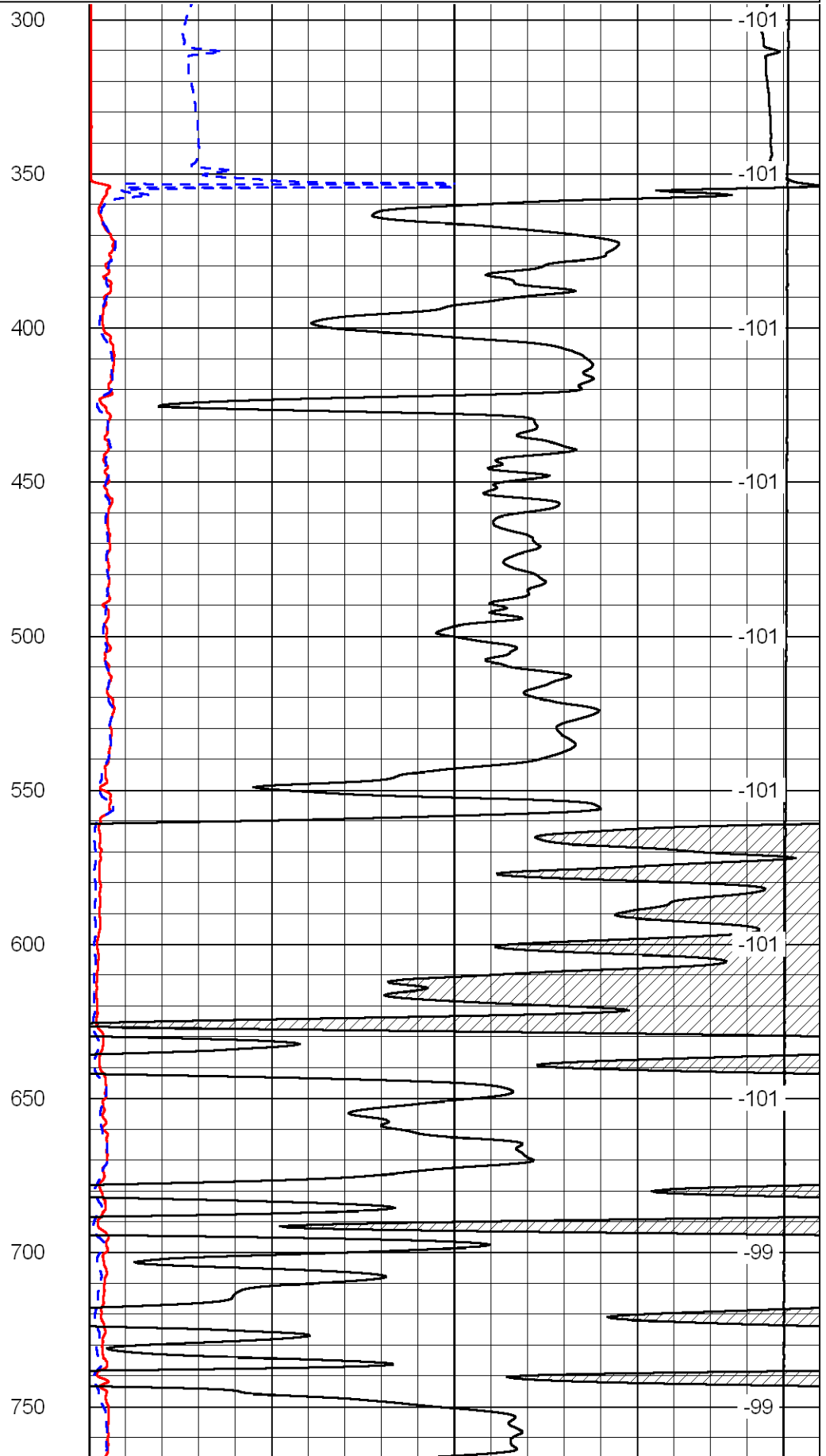
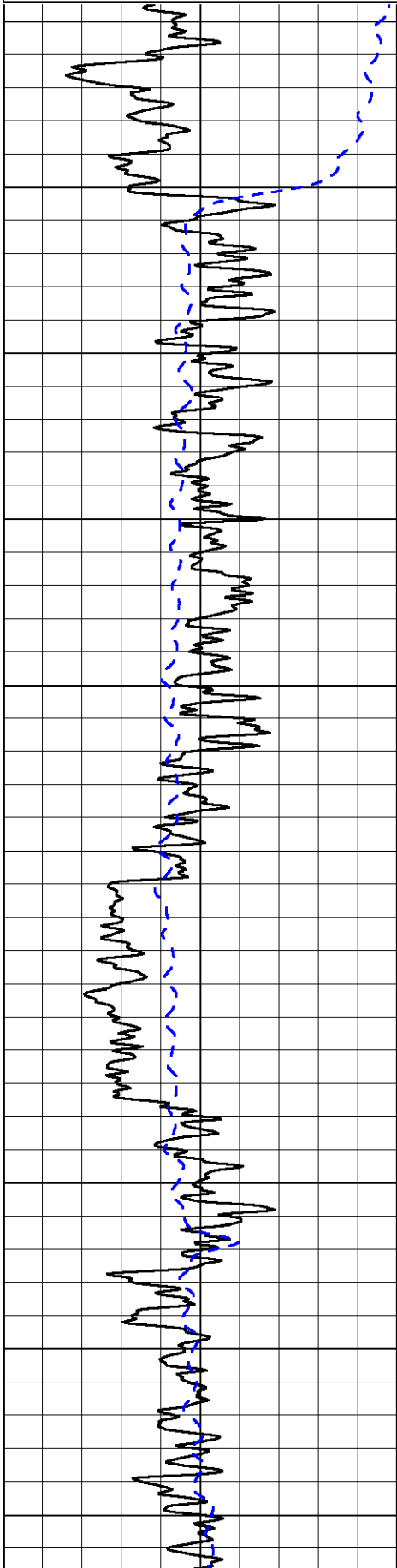
 Garfield, Ks;
 South and east out of town 1 mile;
 cross river bridge; 2-1/4 North on River Rd

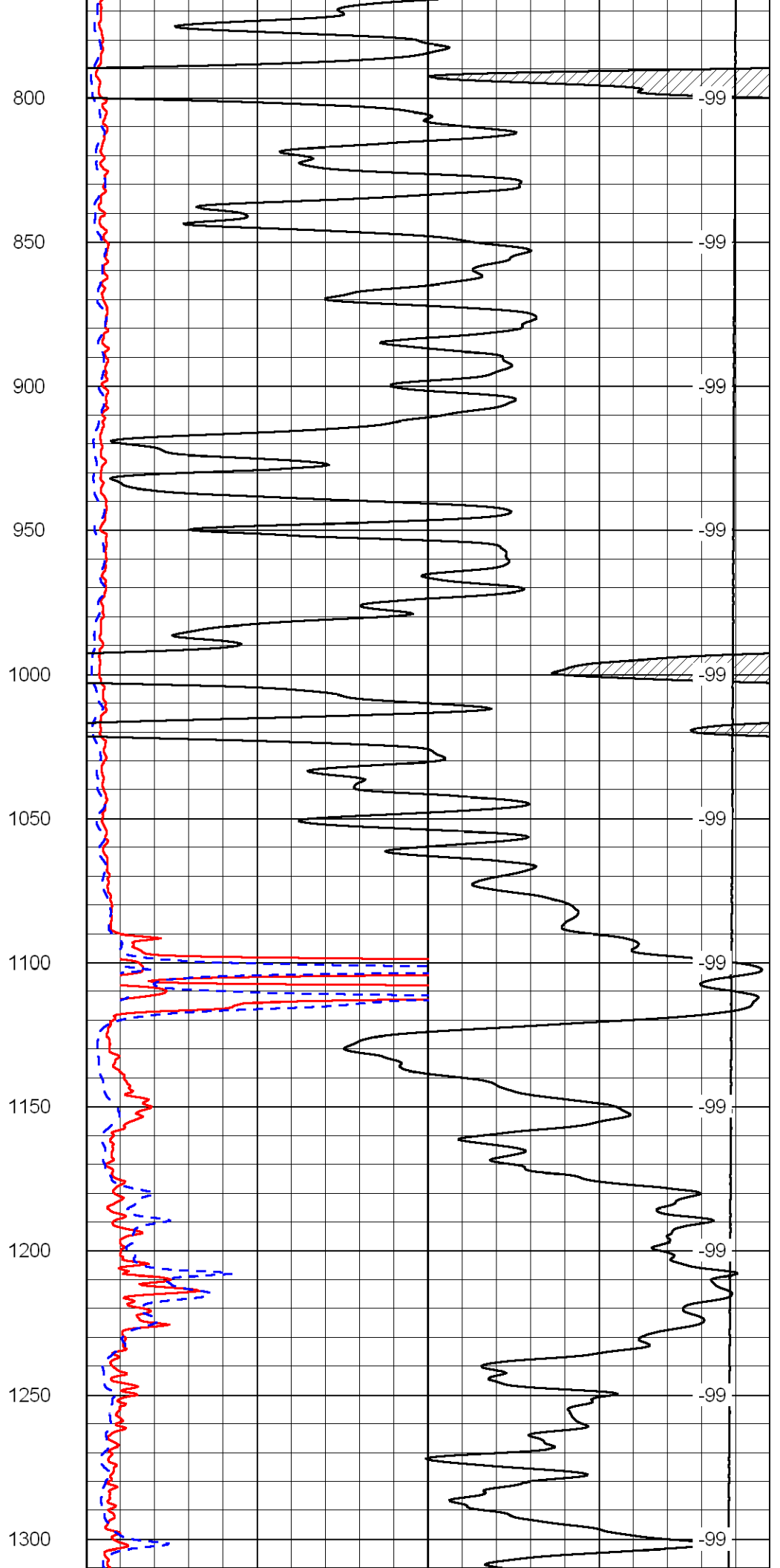
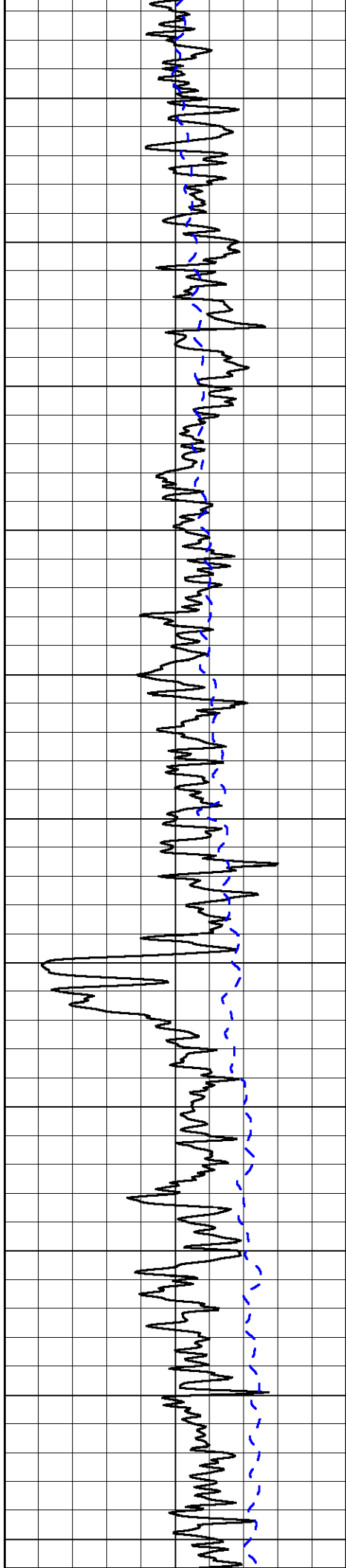
Database File: Id hd.db
 Dataset Pathname: Garfield/Jane_1/DIL/@00000e60
 Presentation Format: dil2in
 Dataset Creation: Fri Mar 04 16:09:09 2011
 Charted by: Depth in Feet scaled 1:600

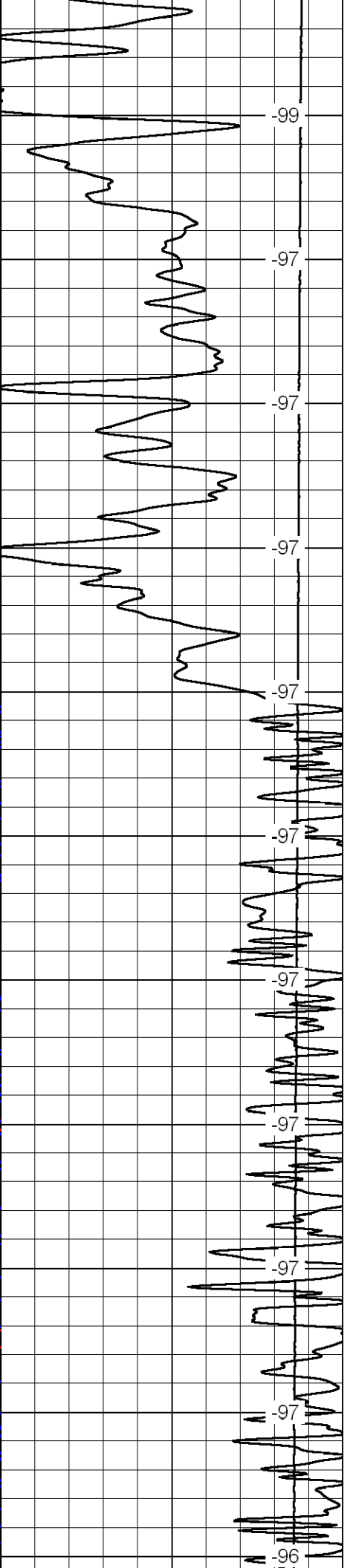
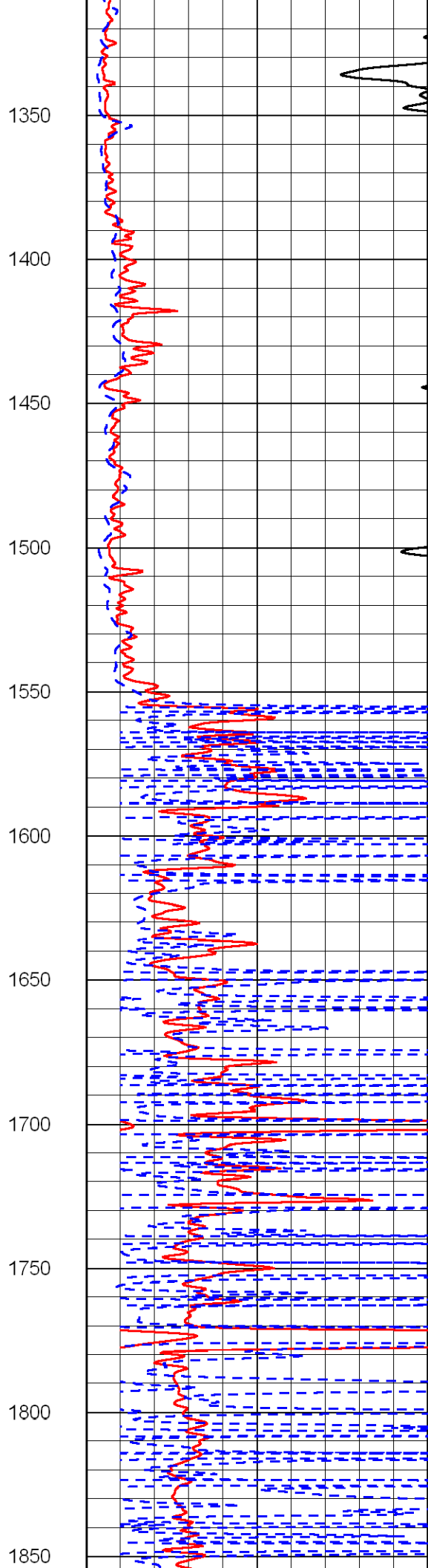
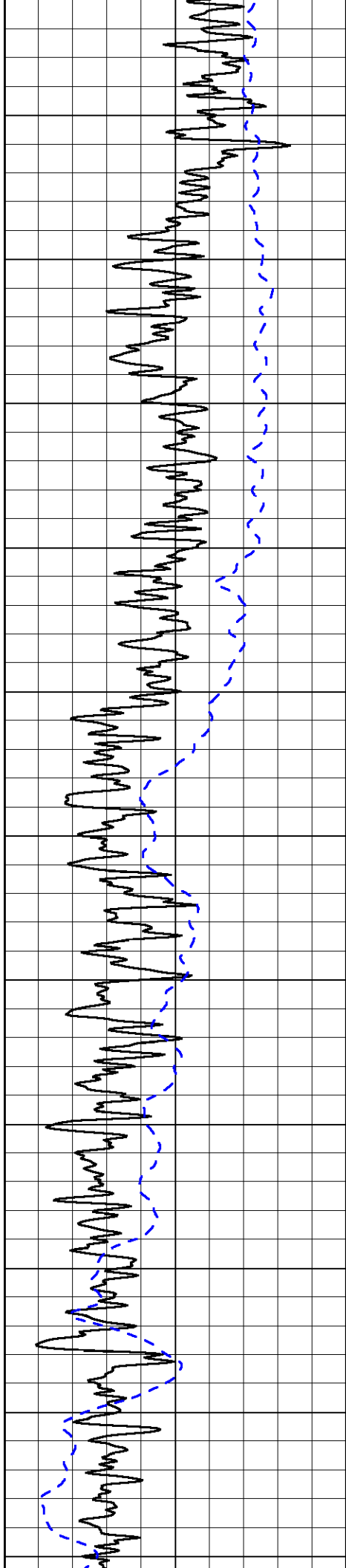
0 Gamma Ray 150
-200 SP 0

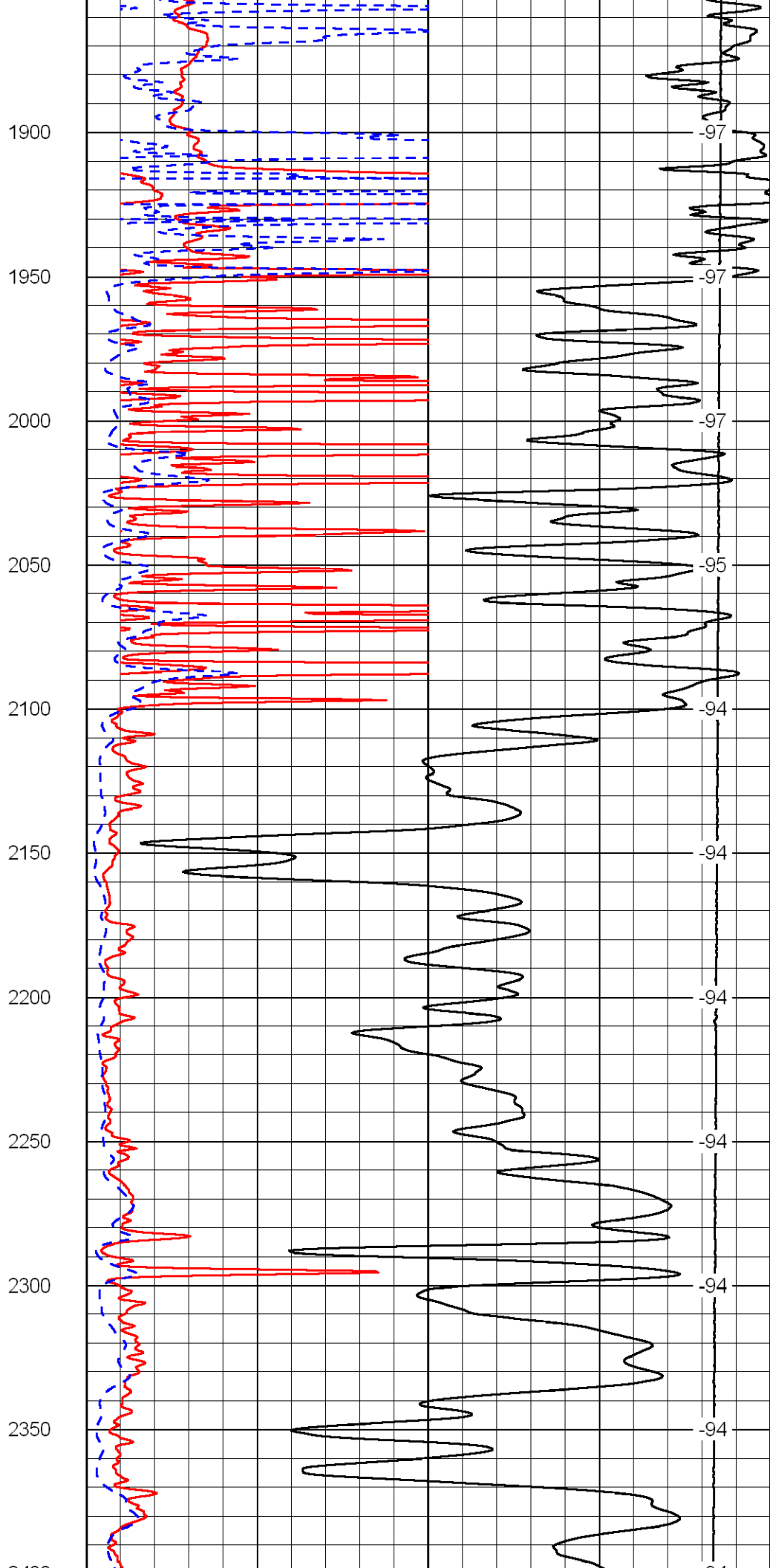
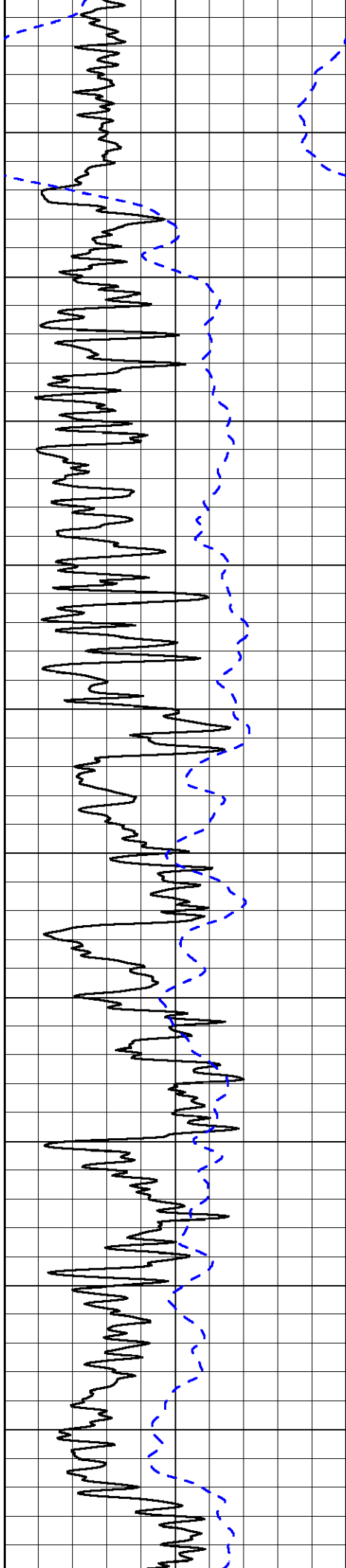
0 Shallow Resistivity 50
0 Deep Resistivity 50
1000 Conductivity 0
15000 Line Tension 0
50 Shallow Resistivity 500
50 Deep Resistivity 500

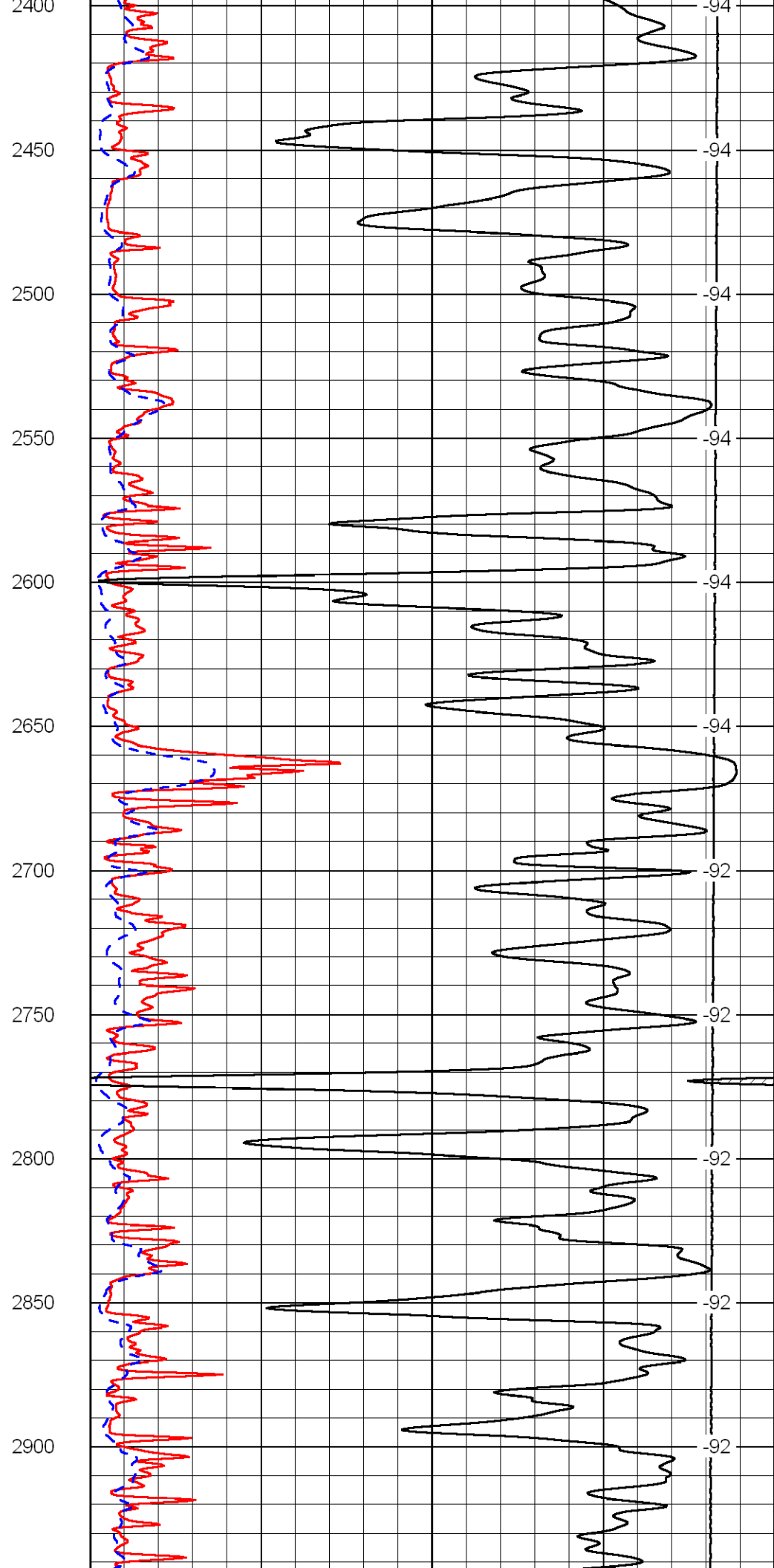
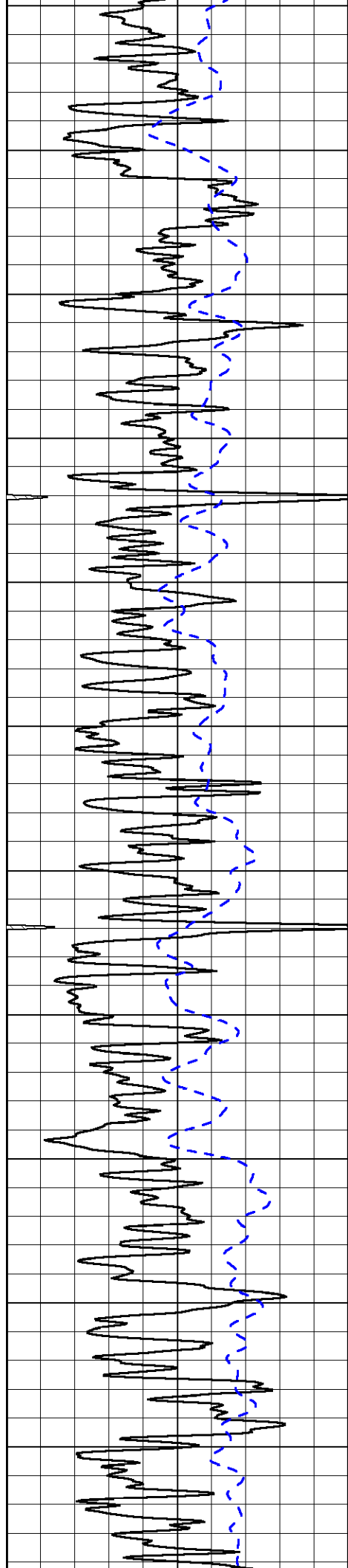
LSPD

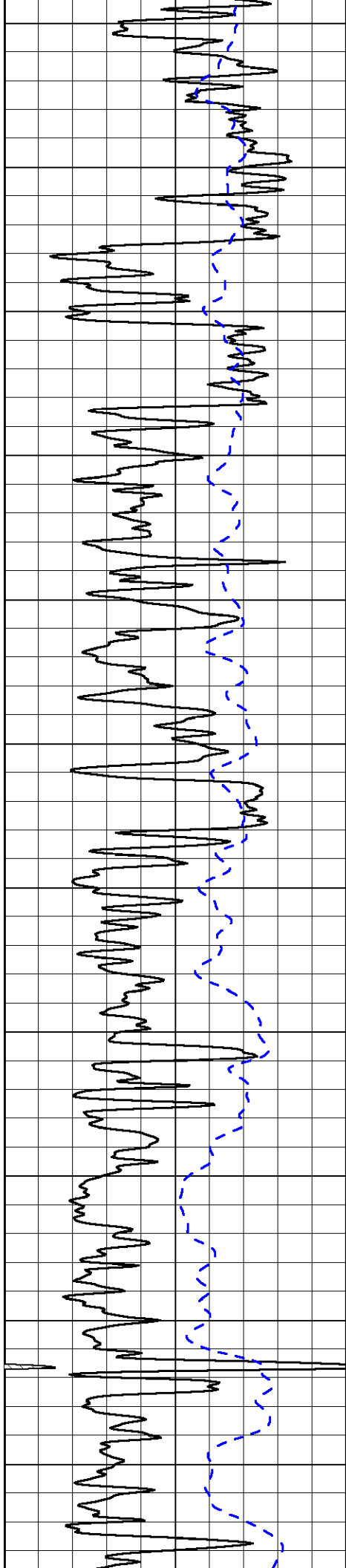




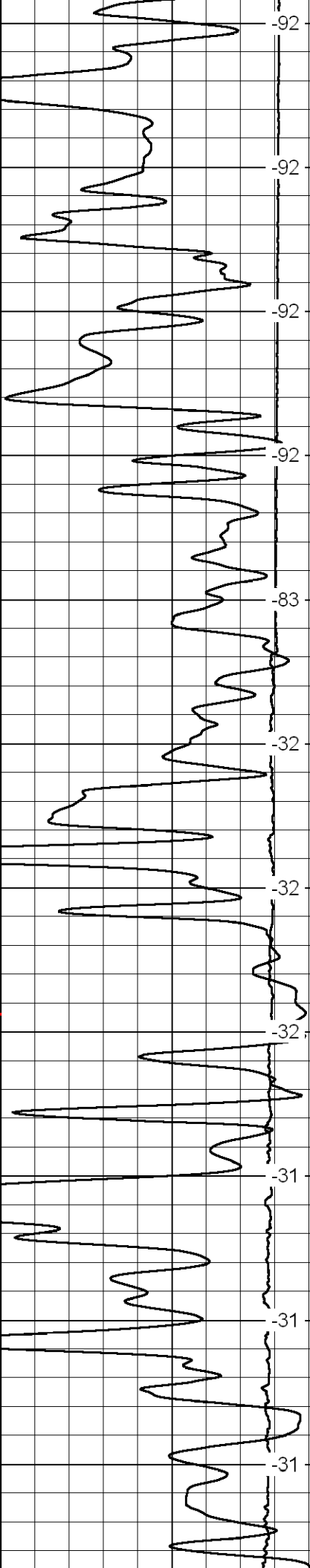
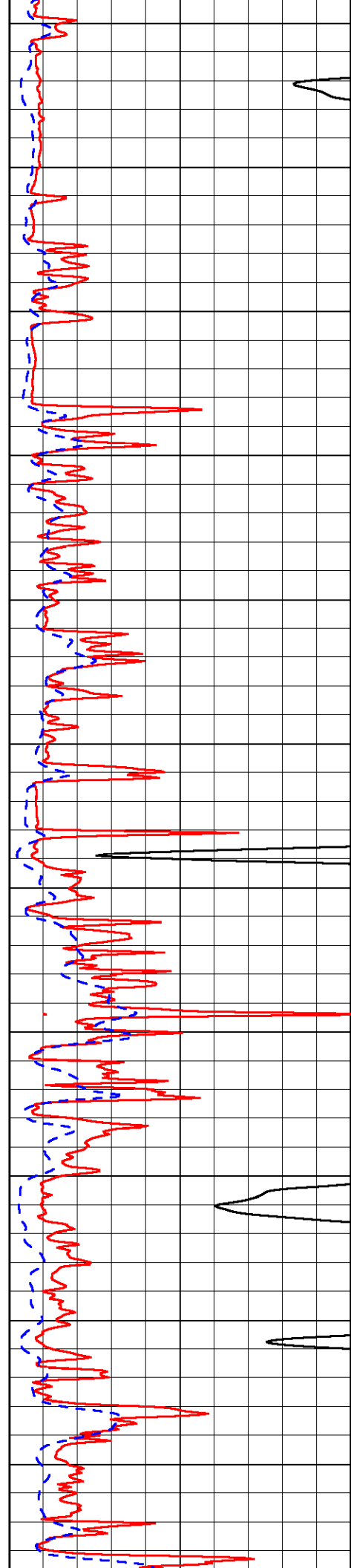




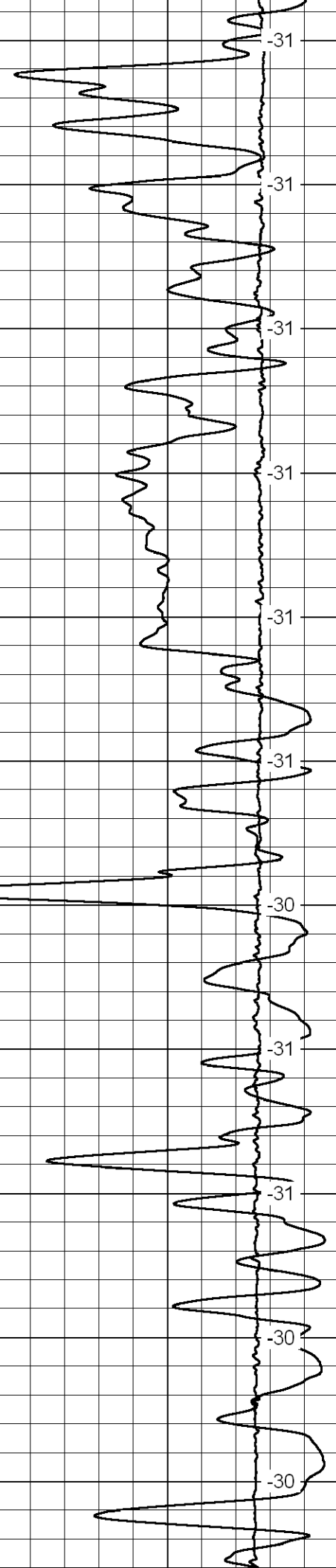
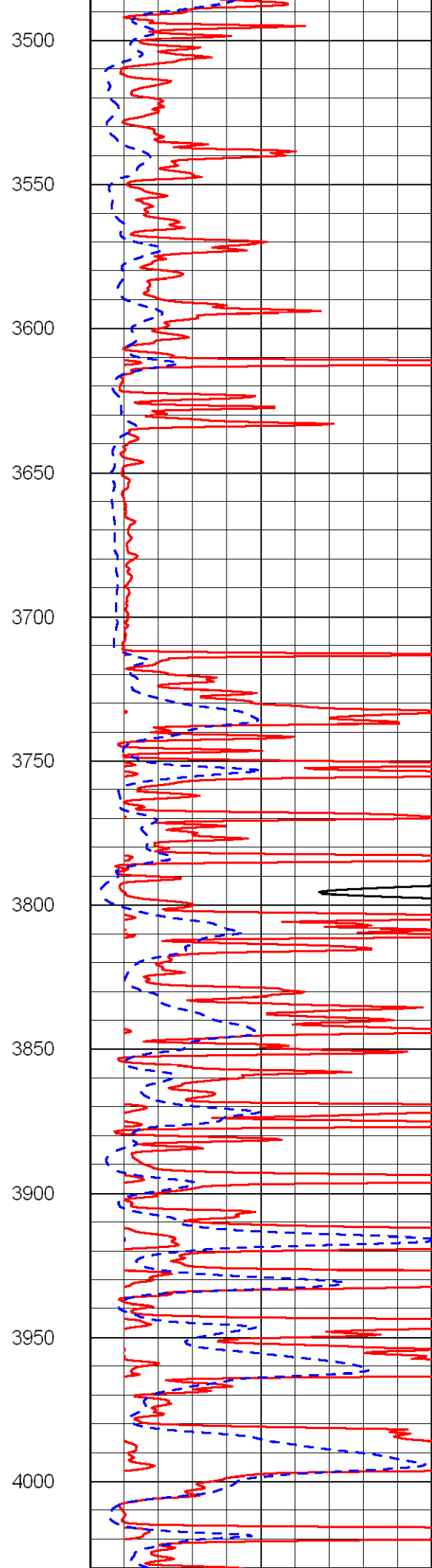
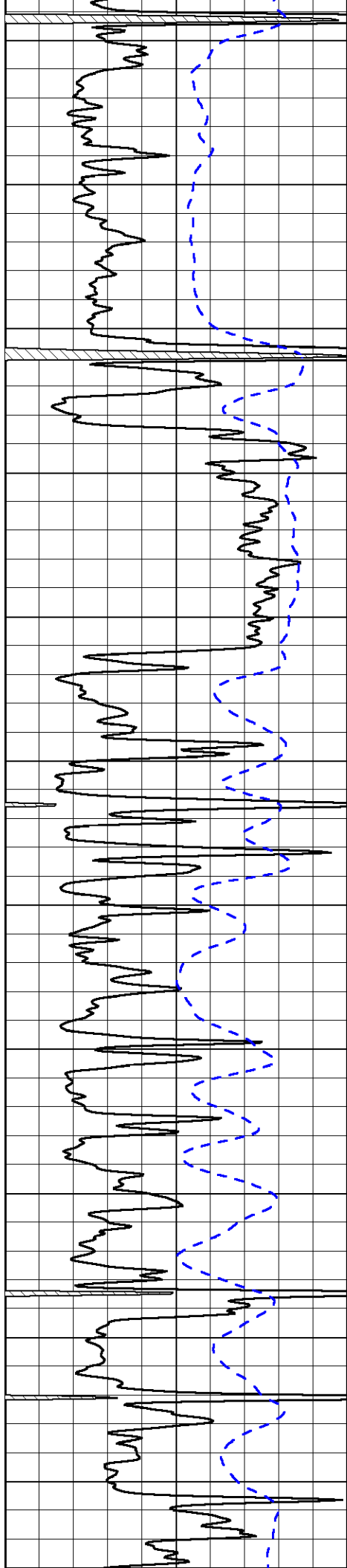


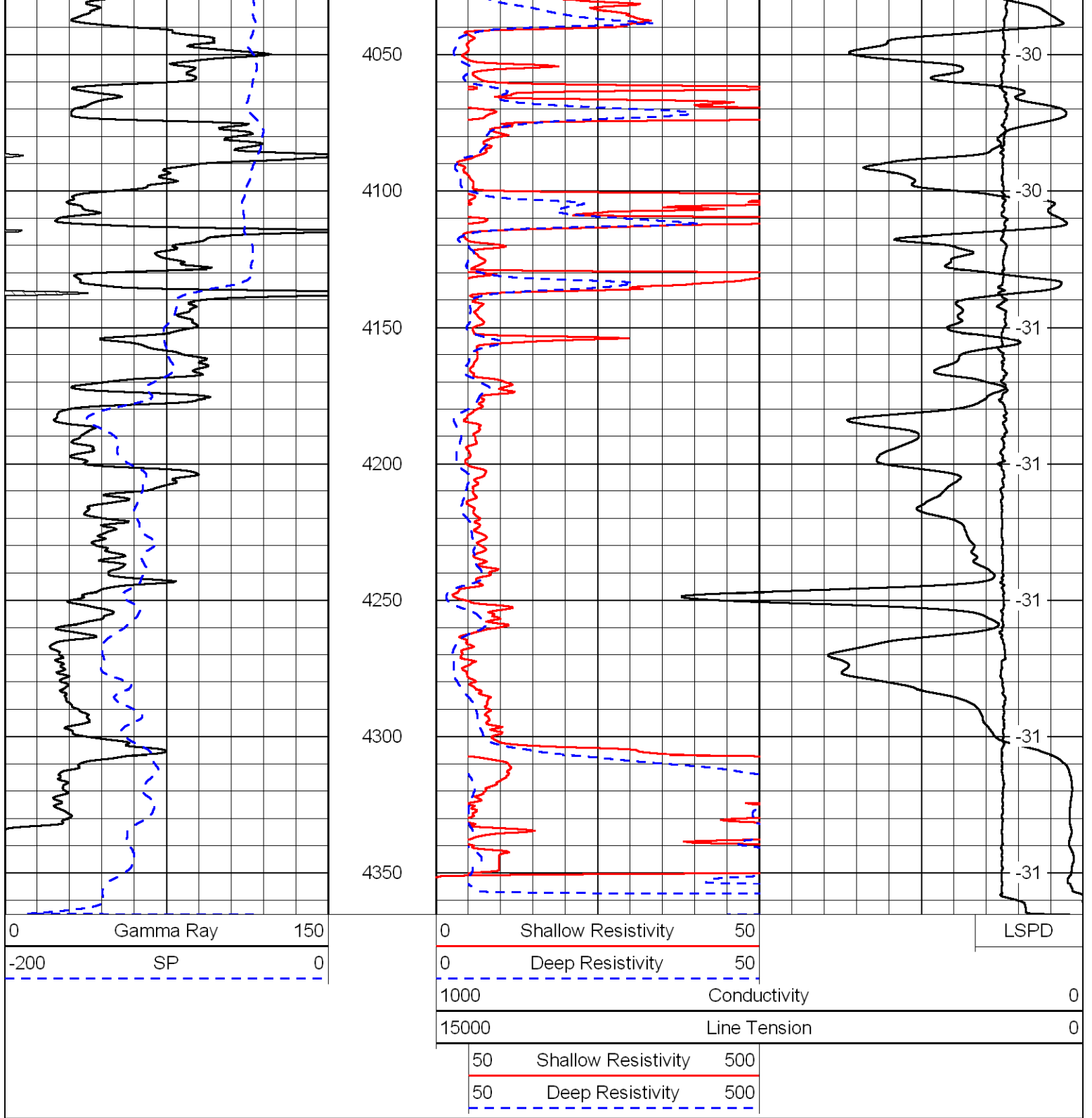


2950
3000
3050
3100
3150
3200
3250
3300
3350
3400
3450

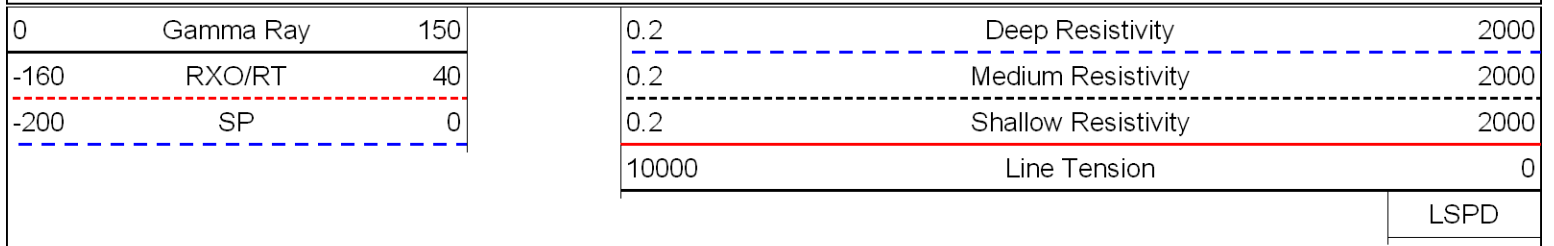


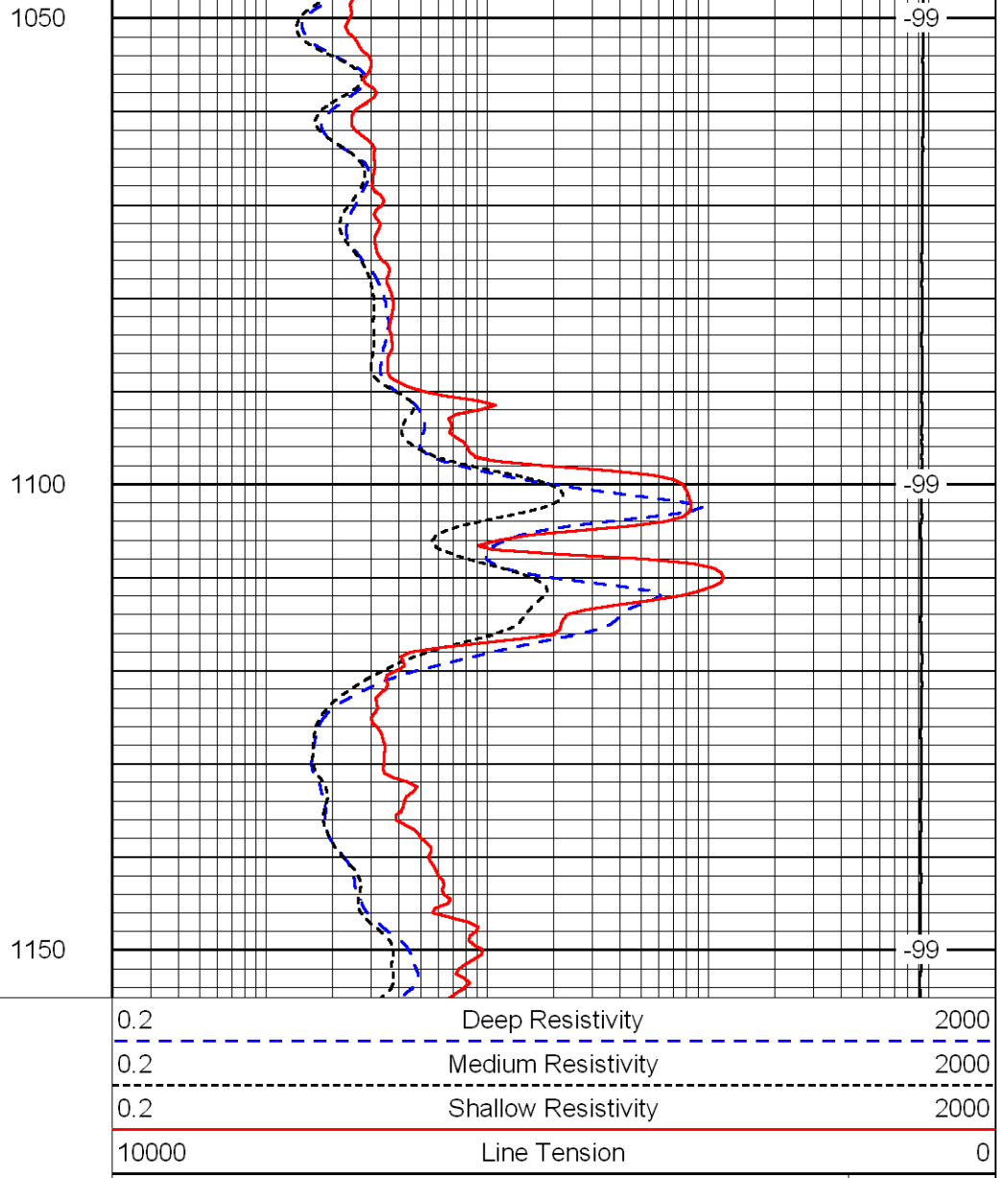
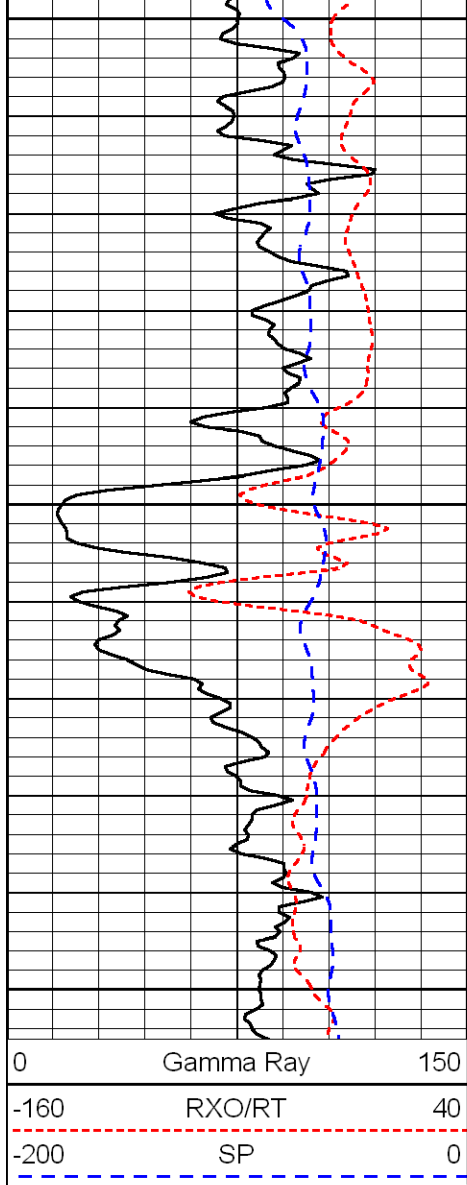
-92
-92
-92
-92
-83
-32
-32
-32
-32
-31
-31
-31





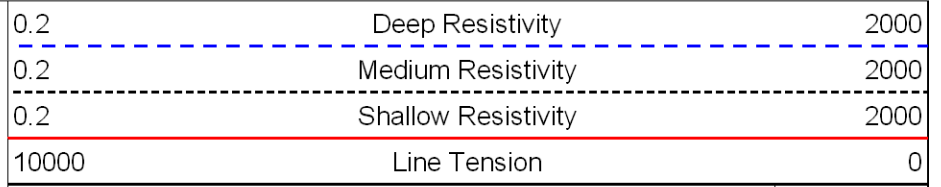
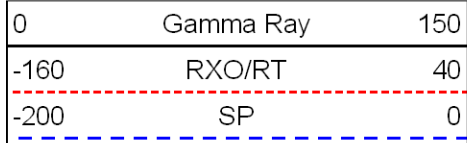
Database File: Id hd.db
 Dataset Pathname: Garfield/Jane_1/DIL/@00000e60
 Presentation Format: dil
 Dataset Creation: Fri Mar 04 16:09:09 2011
 Charted by: Depth in Feet scaled 1:240



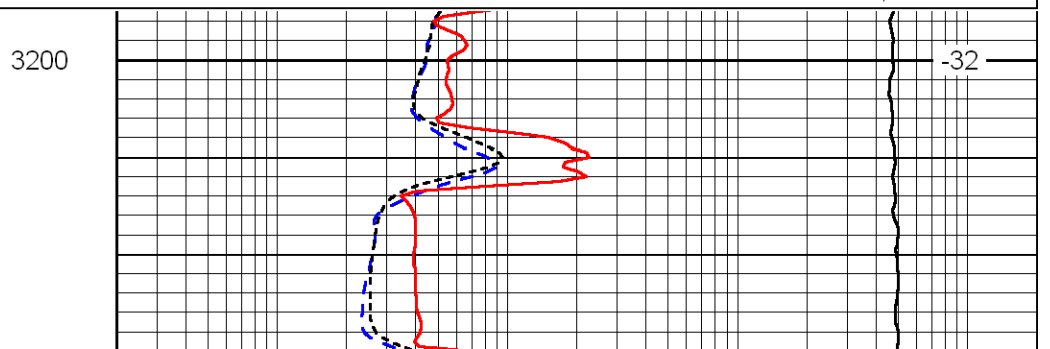
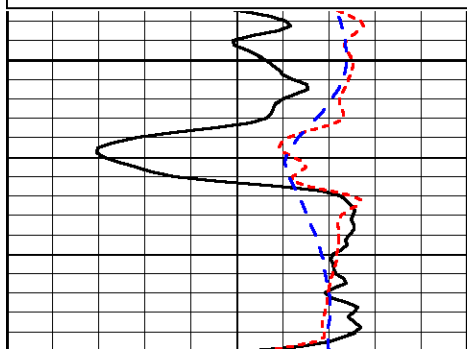


LSPD

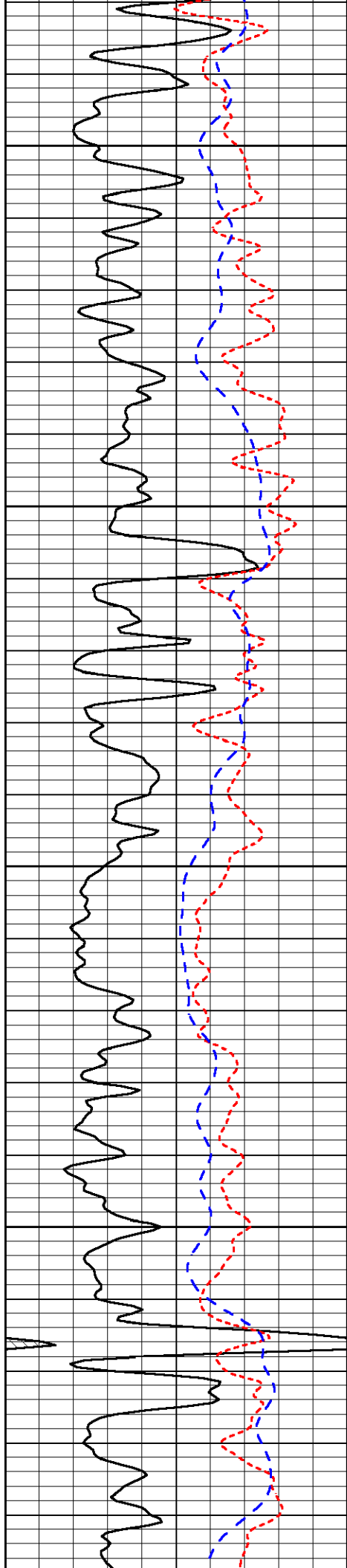
Database File: Id hd.db
 Dataset Pathname: Garfield/Jane_1/DIL/@00000e60
 Presentation Format: dil
 Dataset Creation: Fri Mar 04 16:09:09 2011
 Charted by: Depth in Feet scaled 1:240



LSPD



-32

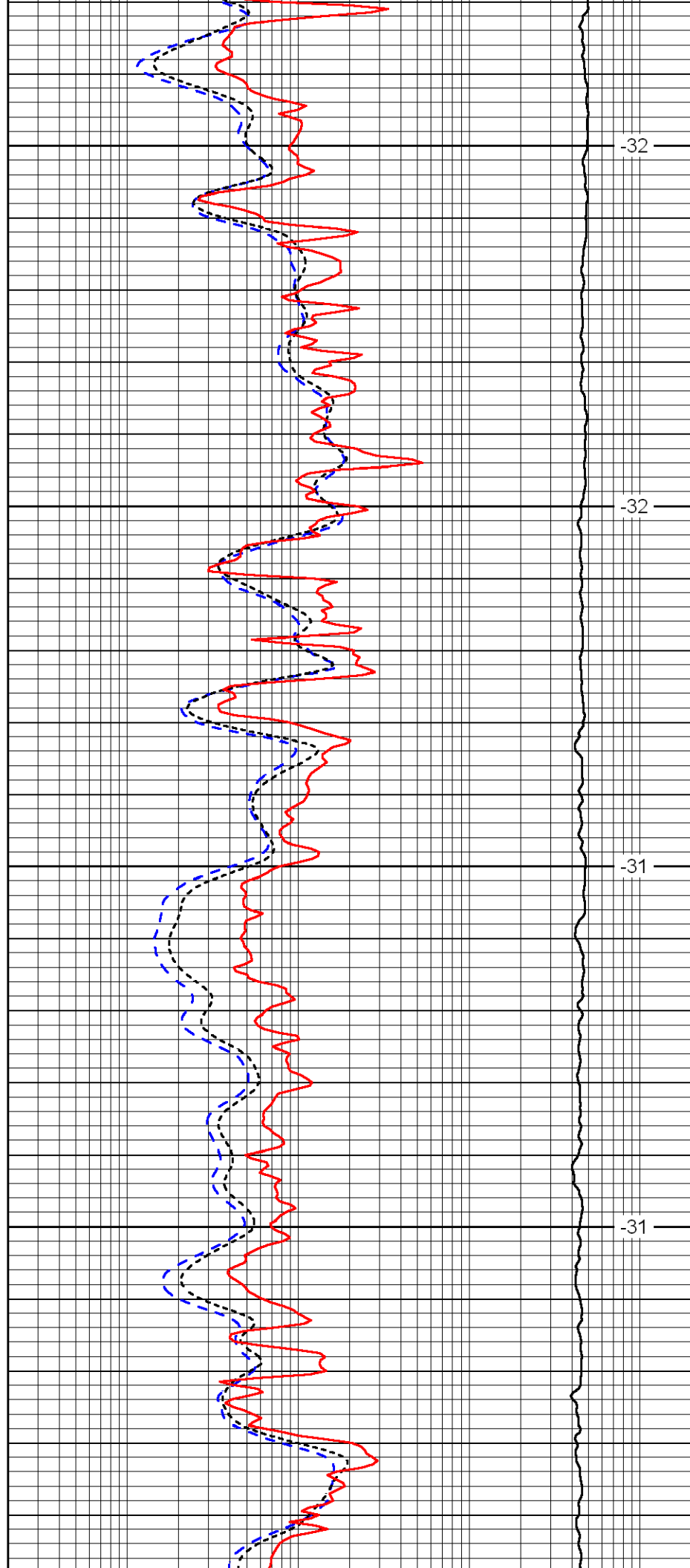


3250

3300

3350

3400

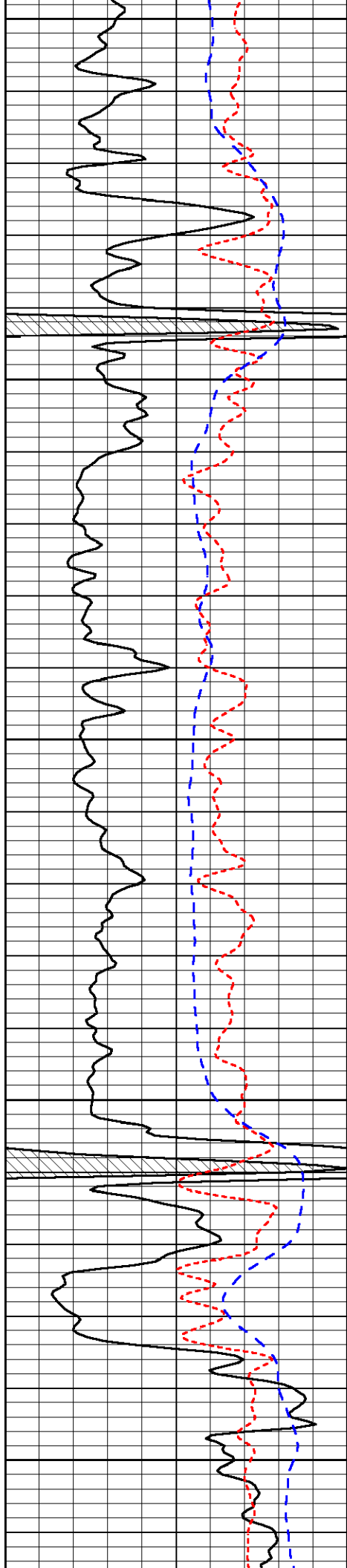


-32

-32

-31

-31



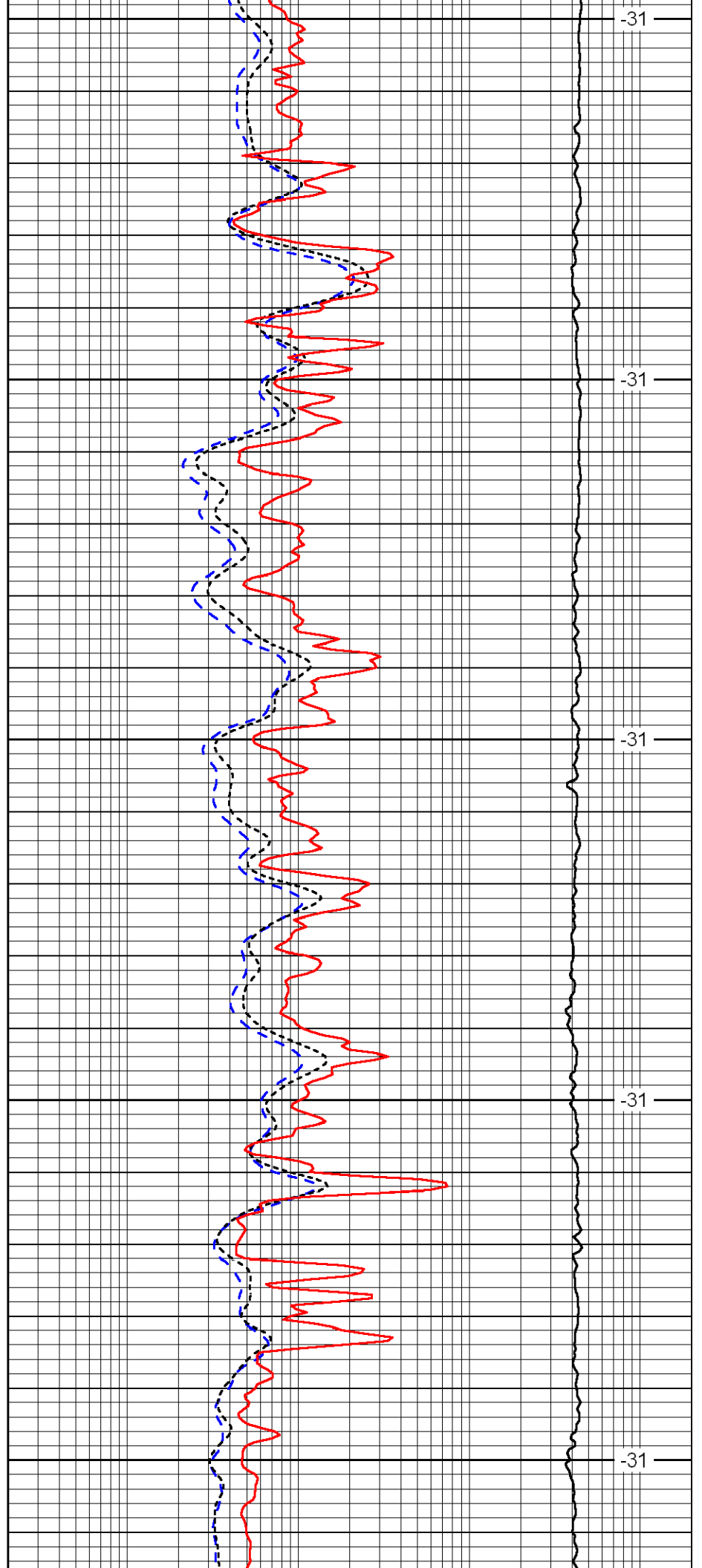
3450

3500

3550

3600

3650



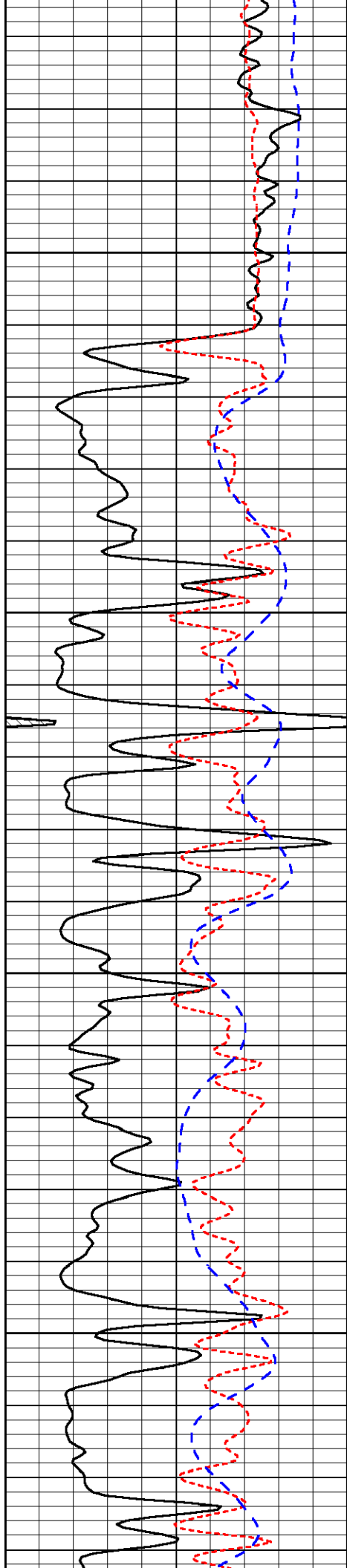
-31

-31

-31

-31

-31

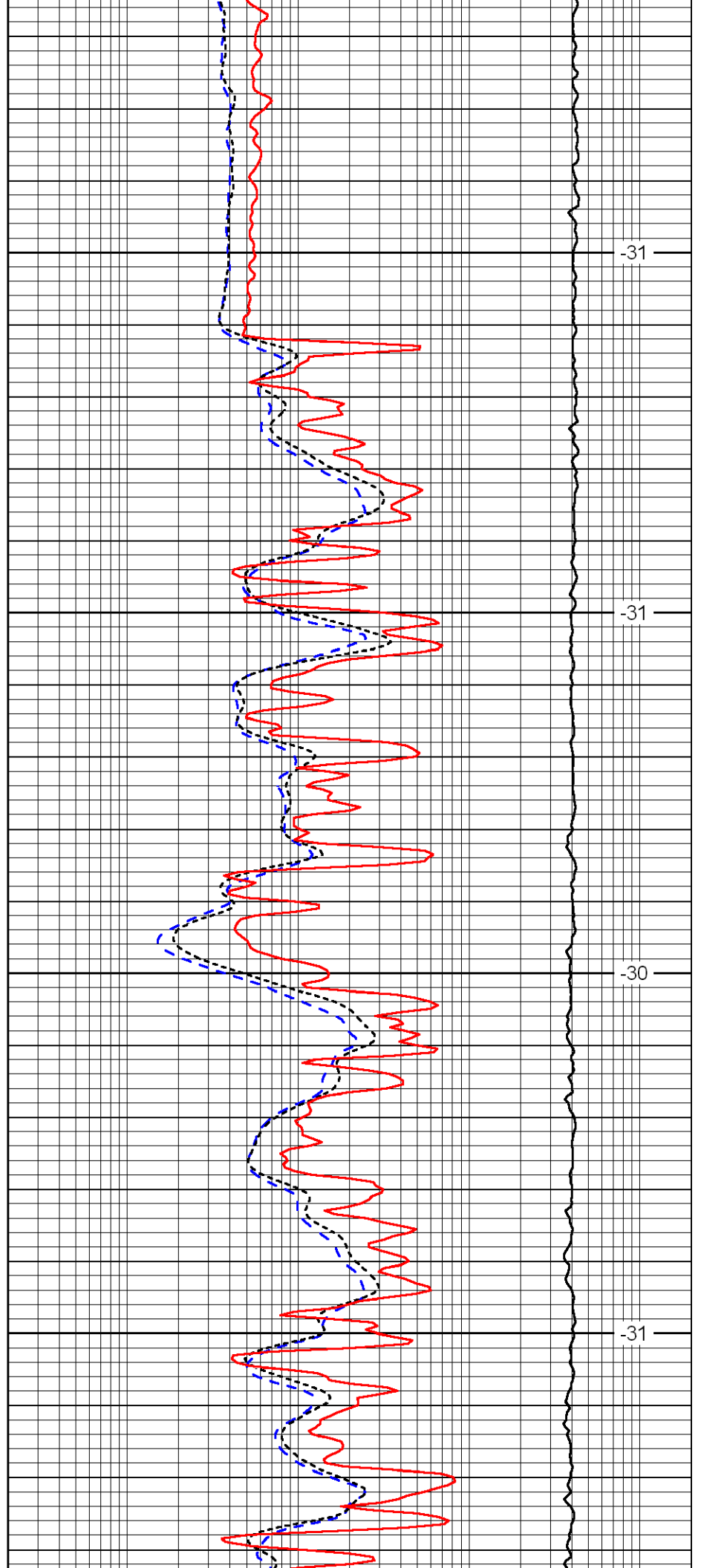


3700

3750

3800

3850

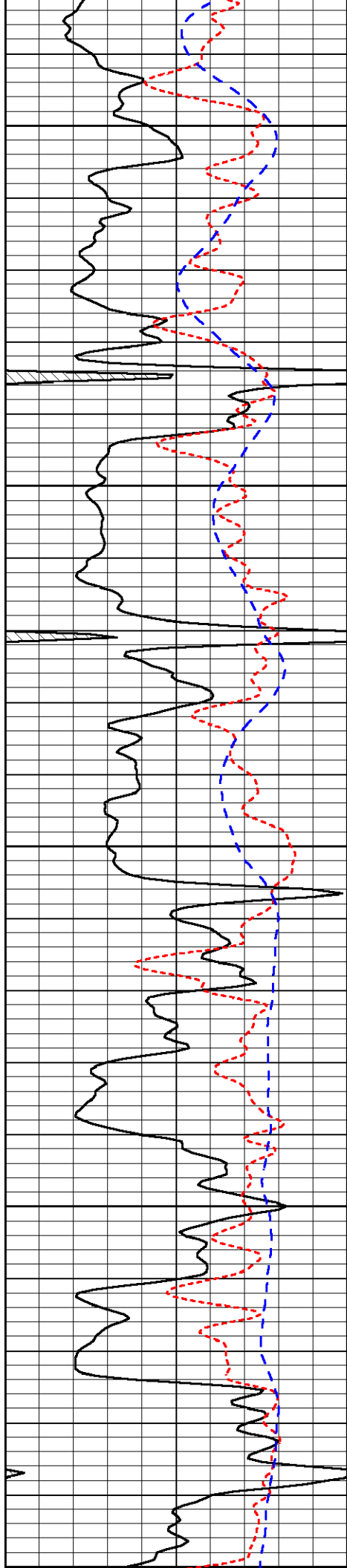


-31

-31

-30

-31



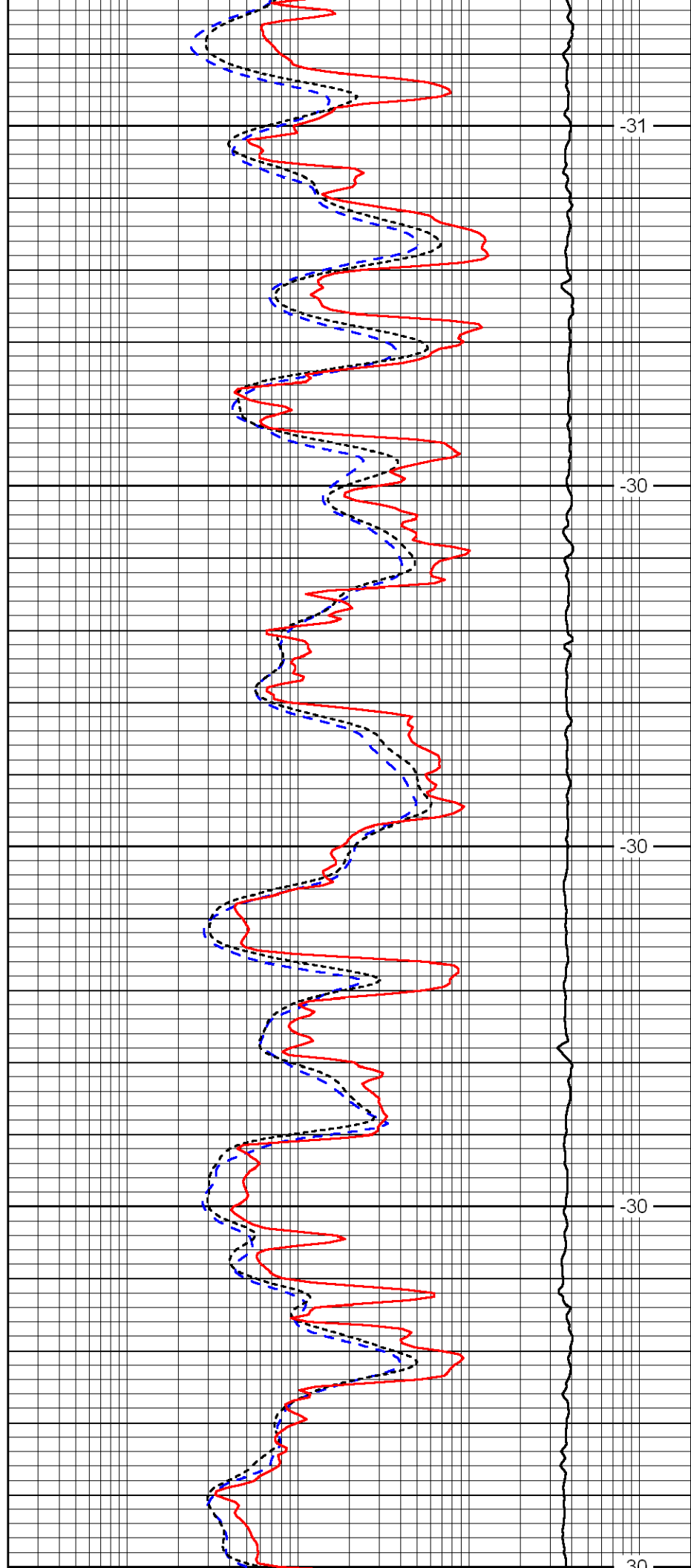
3900

3950

4000

4050

4100



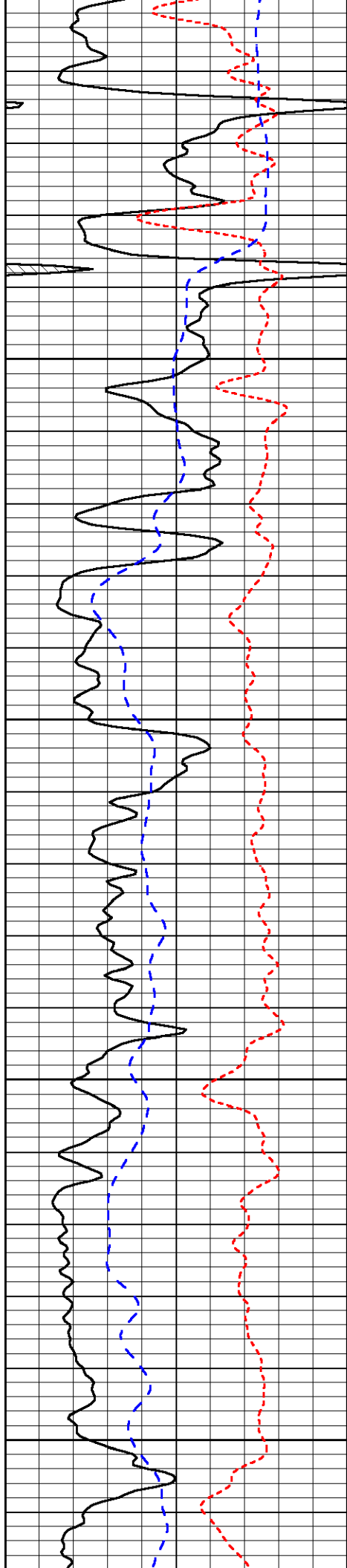
-31

-30

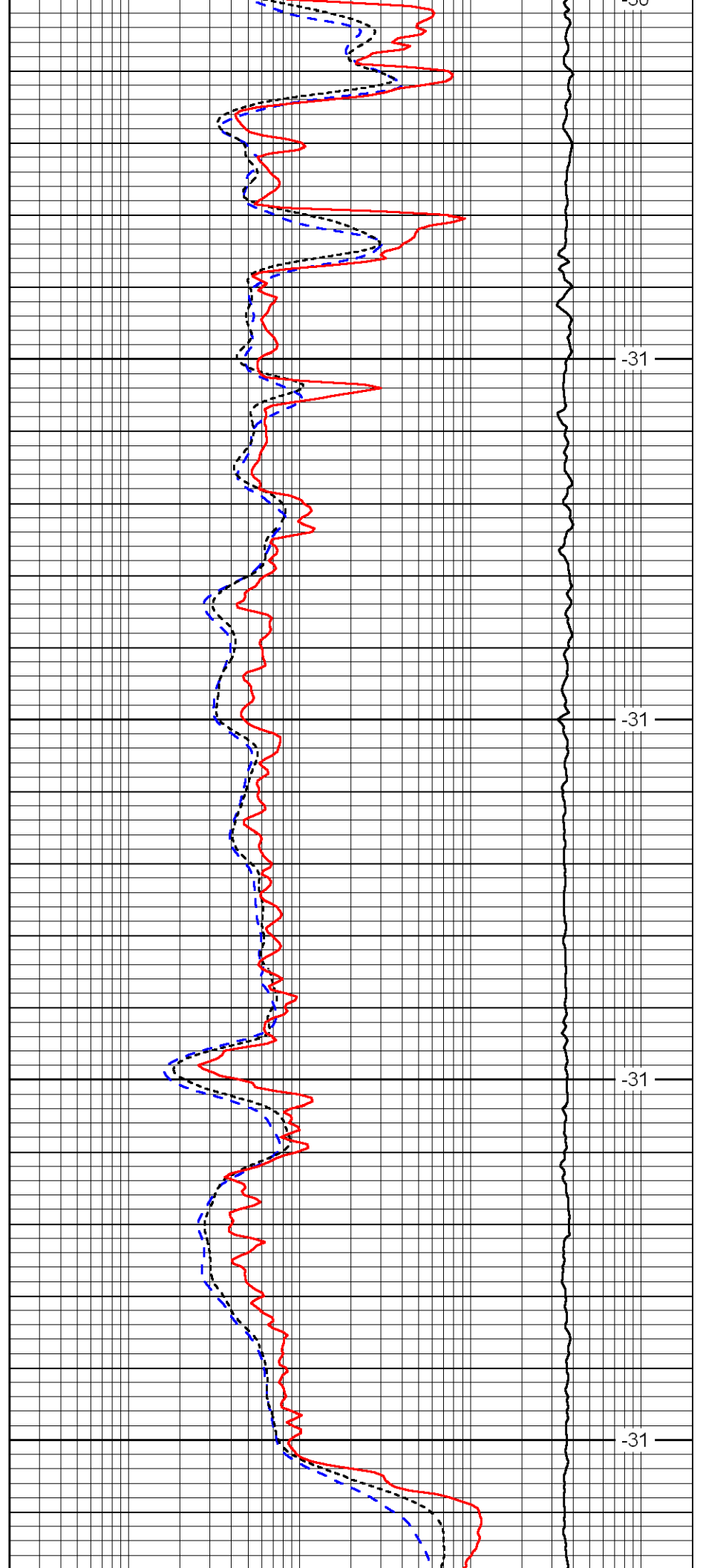
-30

-30

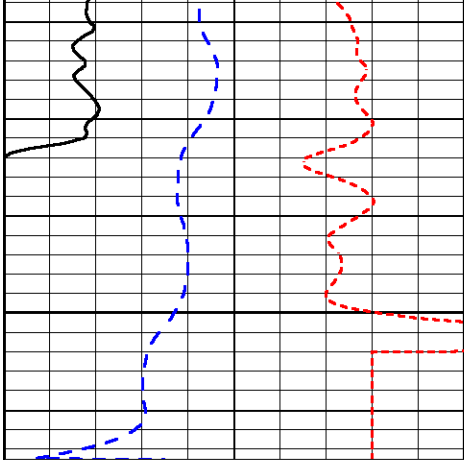
30



4100
4150
4200
4250
4300

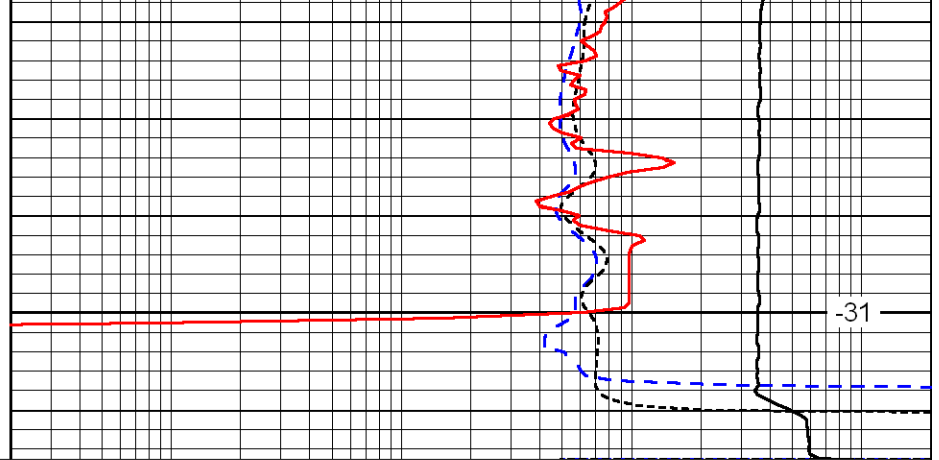


-30
-31
-31
-31
-31



4350

0	Gamma Ray	150
-160	RXO/RT	40
-200	SP	0



-31

0.2	Deep Resistivity	2000
0.2	Medium Resistivity	2000
0.2	Shallow Resistivity	2000
10000	Line Tension	0

LSPD