



**Borehole Compensated
Sonic Log**

DIGITAL LOG (785) 625-3858

API No.	15-101-22,268-00-00
Company	Larson Engineering, Inc.
Well	Marit No. 2-14
Field	Wildcat
County	Lane
Location	NW SE NE NW 768' FNL & 2,242' FWL
State	Kansas
Other Services	CNL/CDL MEL/DIL

Permanent Datum	Ground Level	Elevation 2842
Log Measured From	Kelly Bushing	7 Ft. Above Perm. Datum
Drilling Measured From	Kelly Bushing	
Date	1/2/2011	

Run Number	One
Type Log	BHC Sonic
Depth Driller	4617
Depth Logger	4626
Bottom Logged Interval	4615
Top Logged Interval	250
Type Fluid In Hole	Chemical
Salinity, PPM CL	2600
Density	9.5
Level	Full
Max. Rec. Temp. F	122
Operating Rig Time	5 Hours
Equipment -- Location	10 Hays
Recorded By	J Schuler
Witnessed By	Vern Schrag

Borehole Record				Casing Record			
Run No.	Bit	From	To	Size	Wgt.	From	To
1	12.25	00	256	8.625	24#	00	256
2	7.875	256	4617				

<<< Fold Here >>>

All interpretations are opinions based on inferences from electrical or other measurements and we cannot and do not guarantee the accuracy or correctness of any interpretation, and we shall not, except in the case of gross or willful negligence on our part, be liable or responsible for any loss, costs, damages, or expenses incurred or sustained by anyone resulting from any interpretation made by any of our officers, agents or employees. These interpretations are also subject to our general terms and conditions set out in our current Price Schedule.

Comments

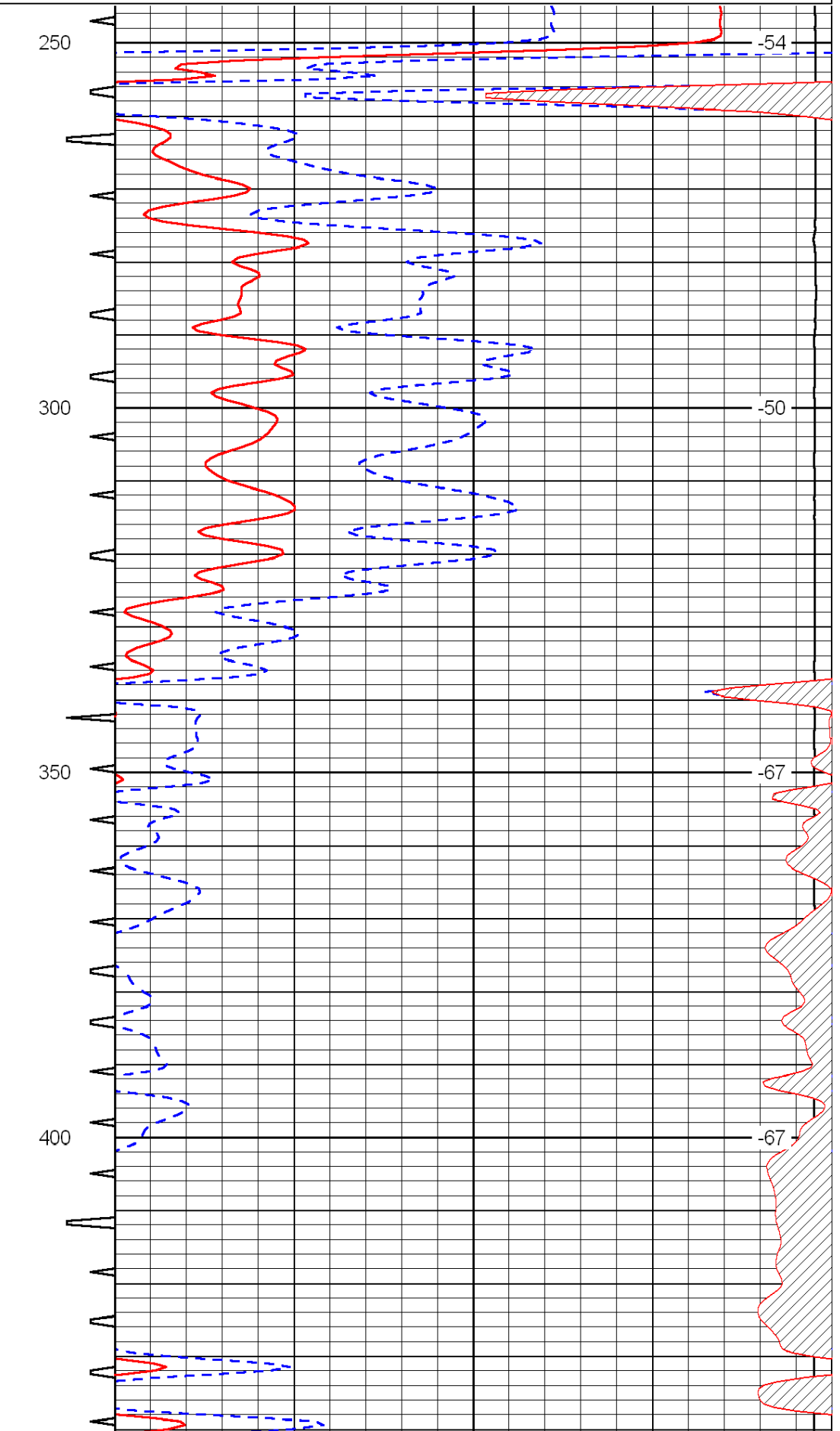
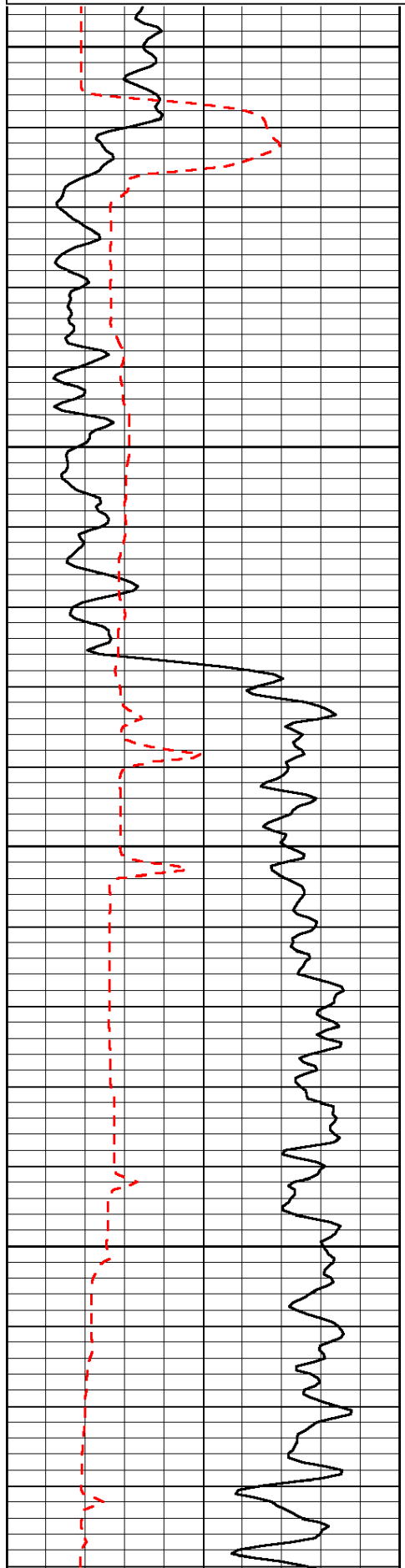
Thank you for using Log-Tech, Inc.
(785) 625-3858

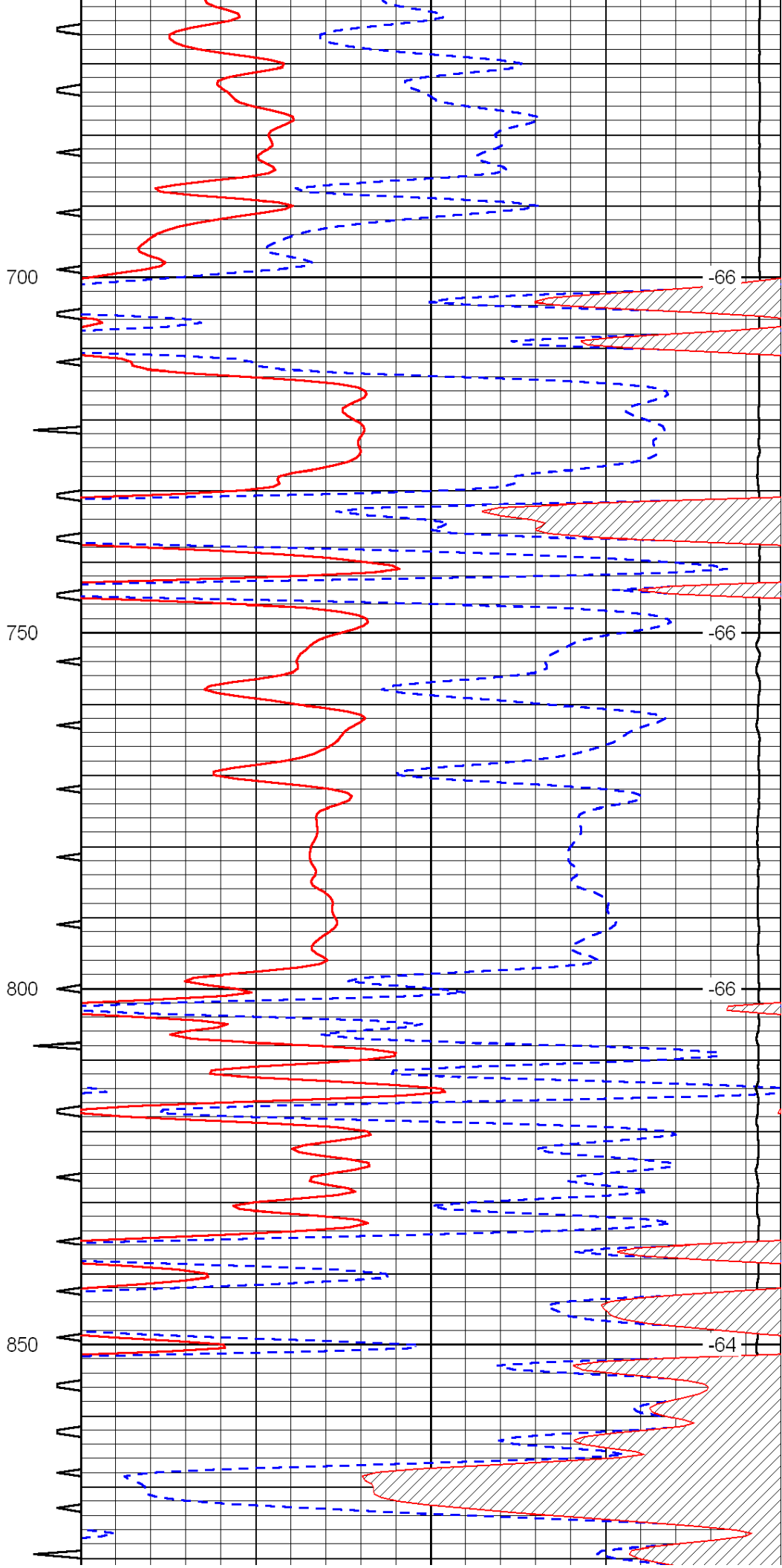
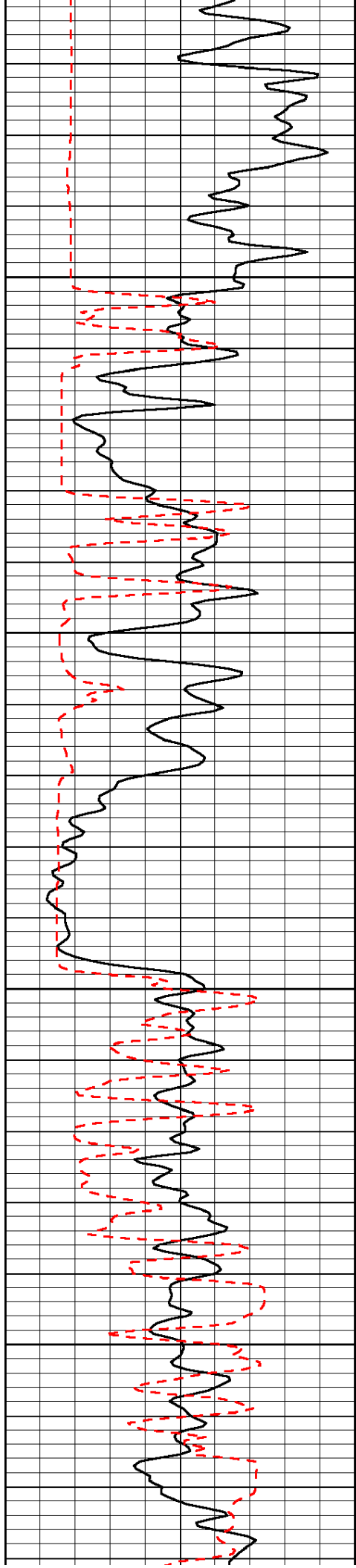
Dighton, 7 West to Eagle Road, South 1/8th Mile, East Into

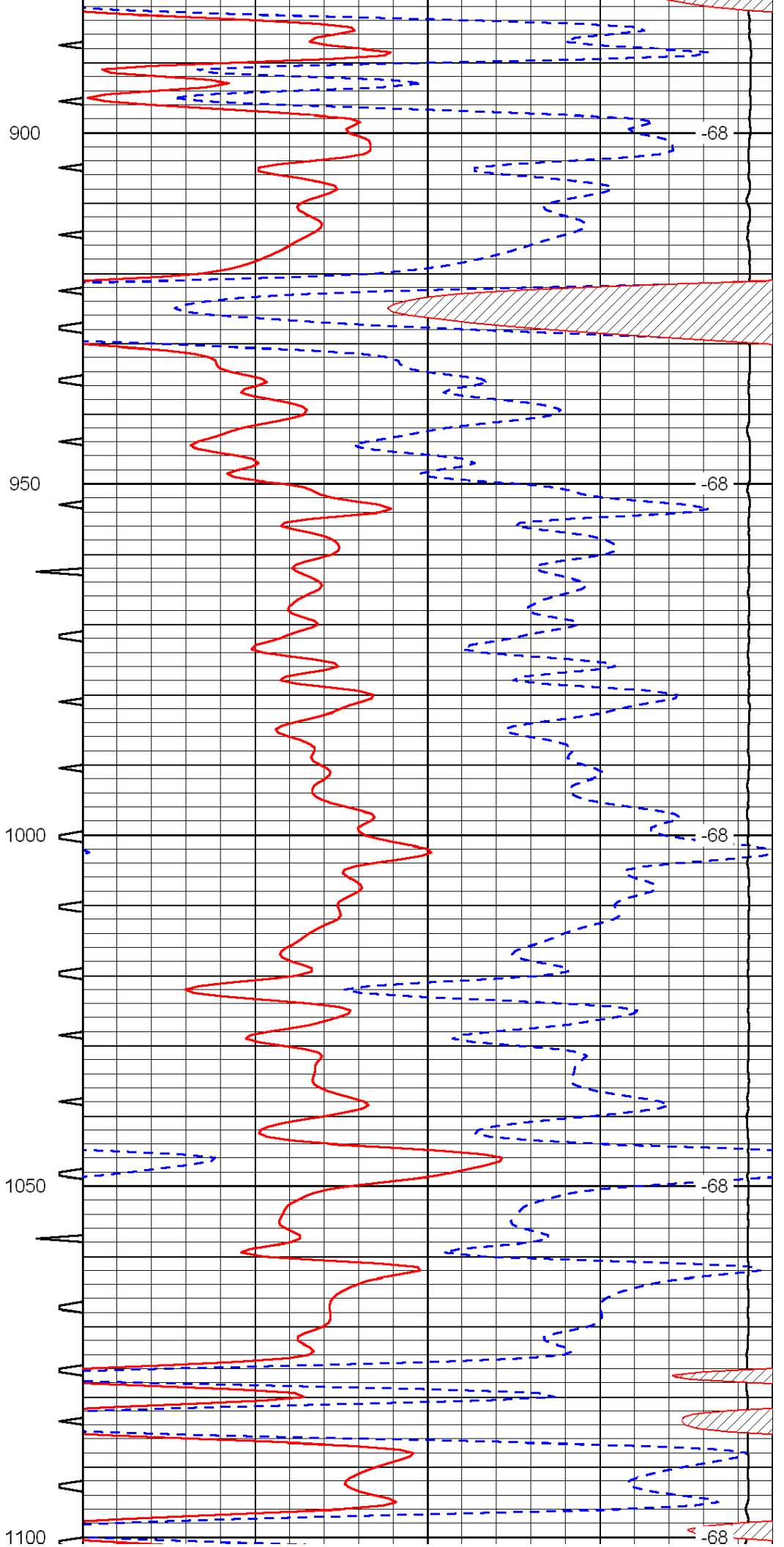
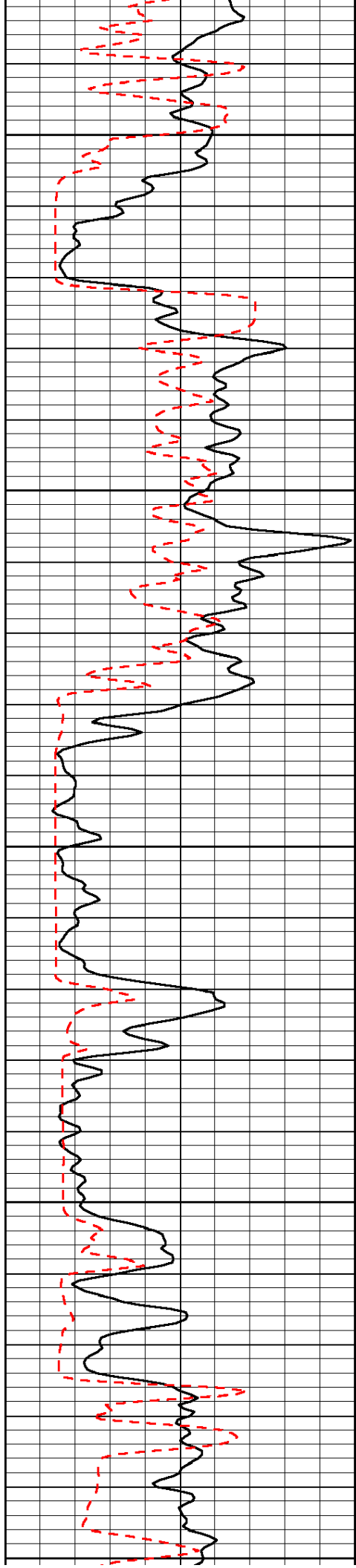
Database File: c:\warrior\data\larson_marit no. 2-14\larson.db
 Dataset Pathname: dil\larstk
 Presentation Format: sonic
 Dataset Creation: Mon Jan 03 02:40:00 2011
 Charted by: Depth in Feet scaled 1:240

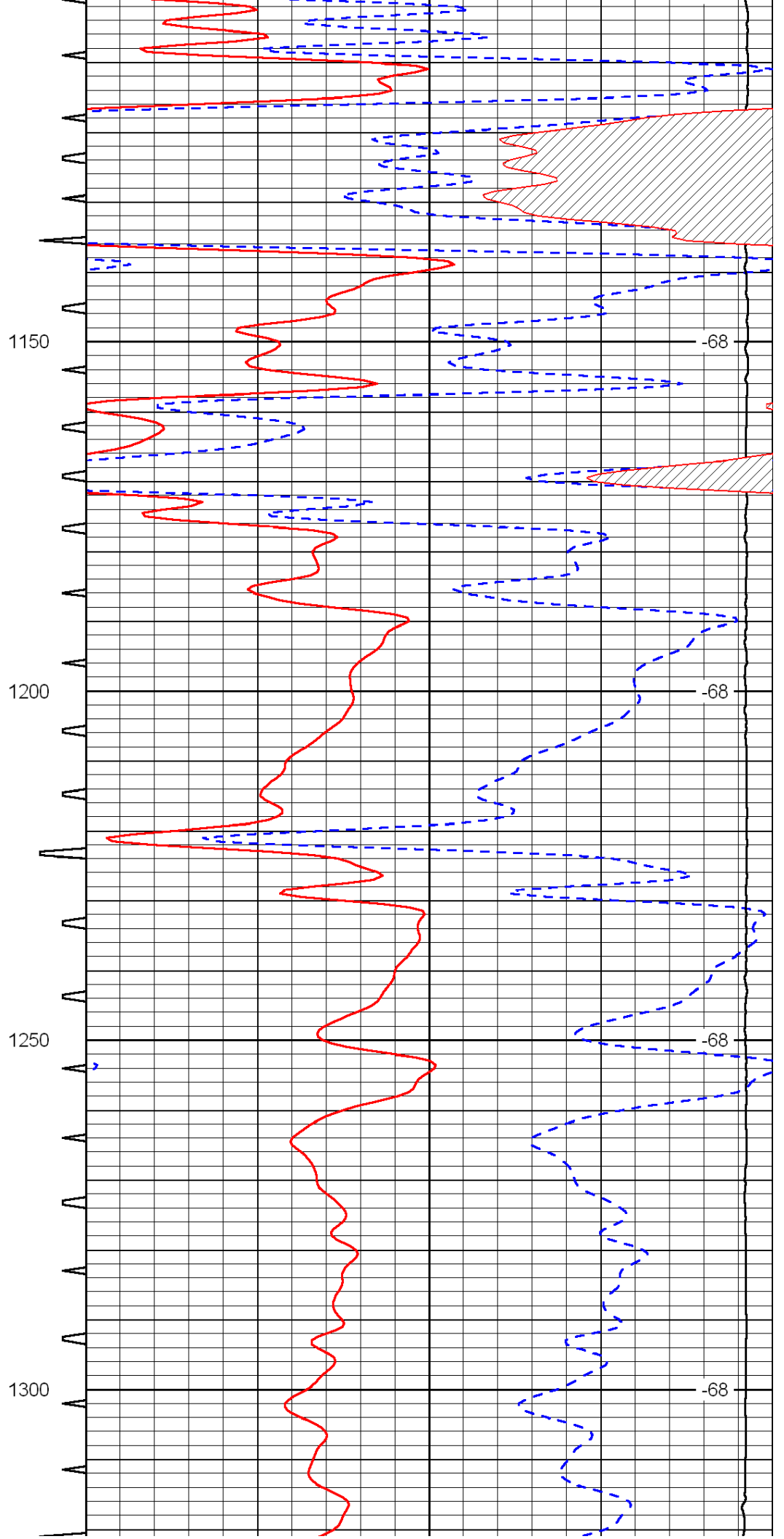
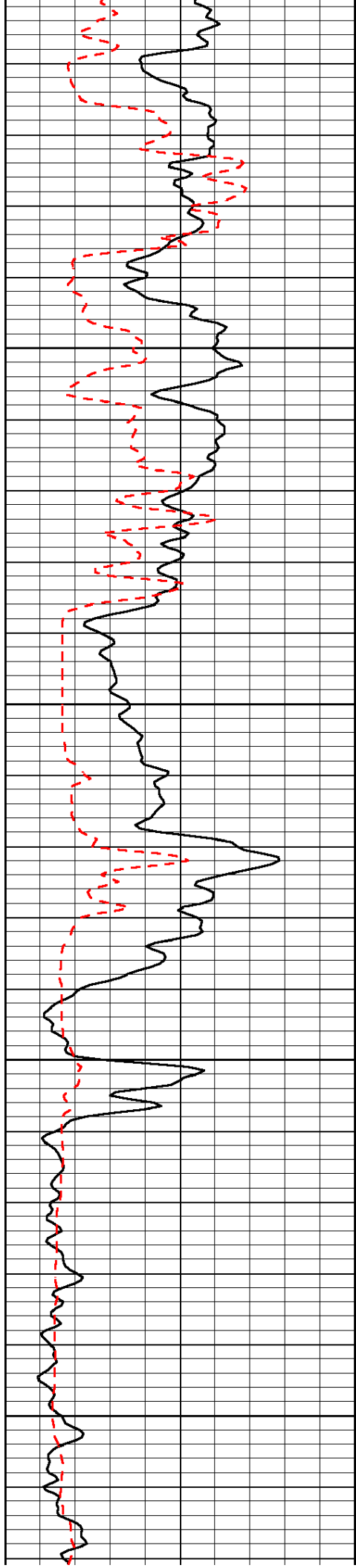
0	Gamma Ray	150	Sonic Int	140	Delta Time (usec/ft)	40
150	Gamma Ray	300	5	0	SPOR	-10
6	Caliper (GAPI)	16		15000	LTEN (lb)	0

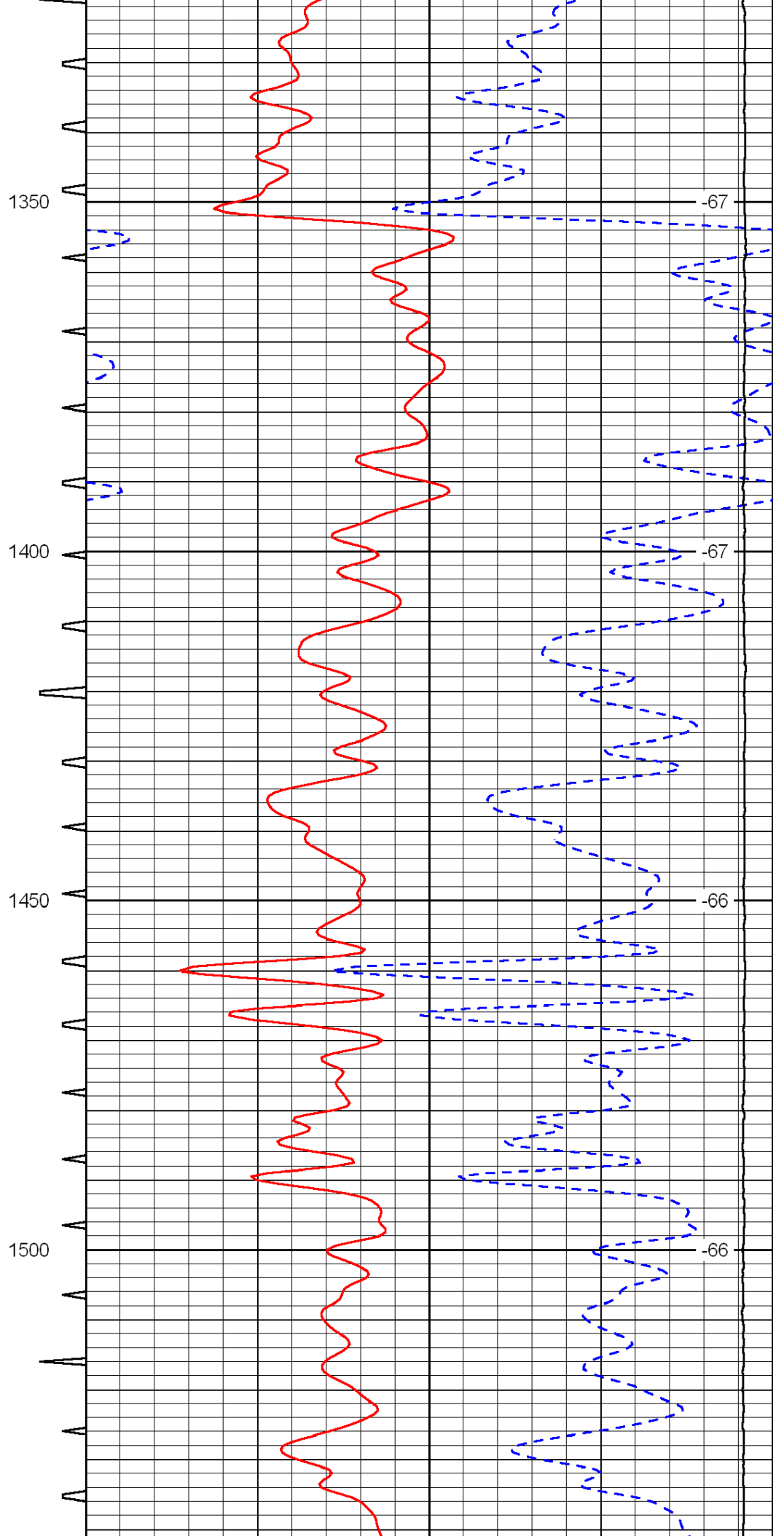
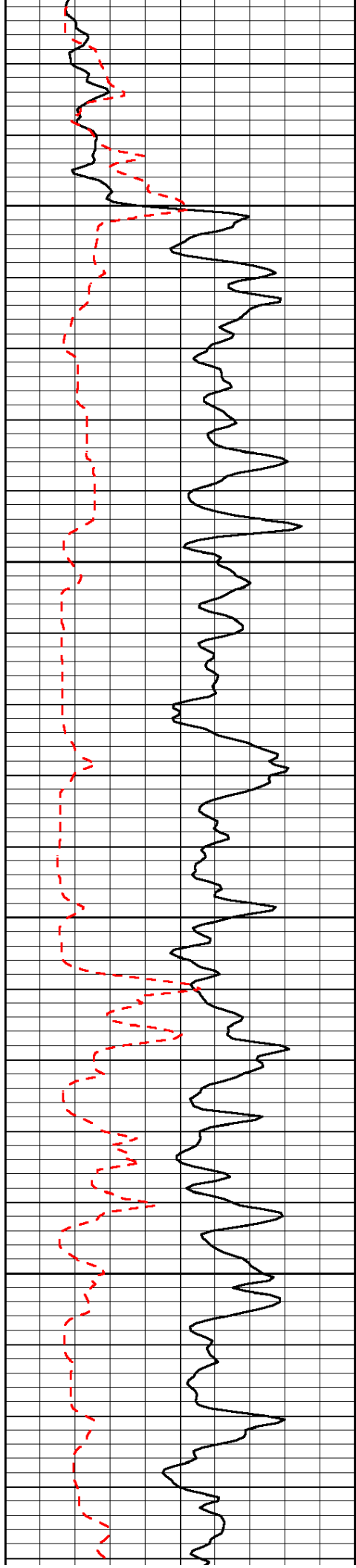
LSPD

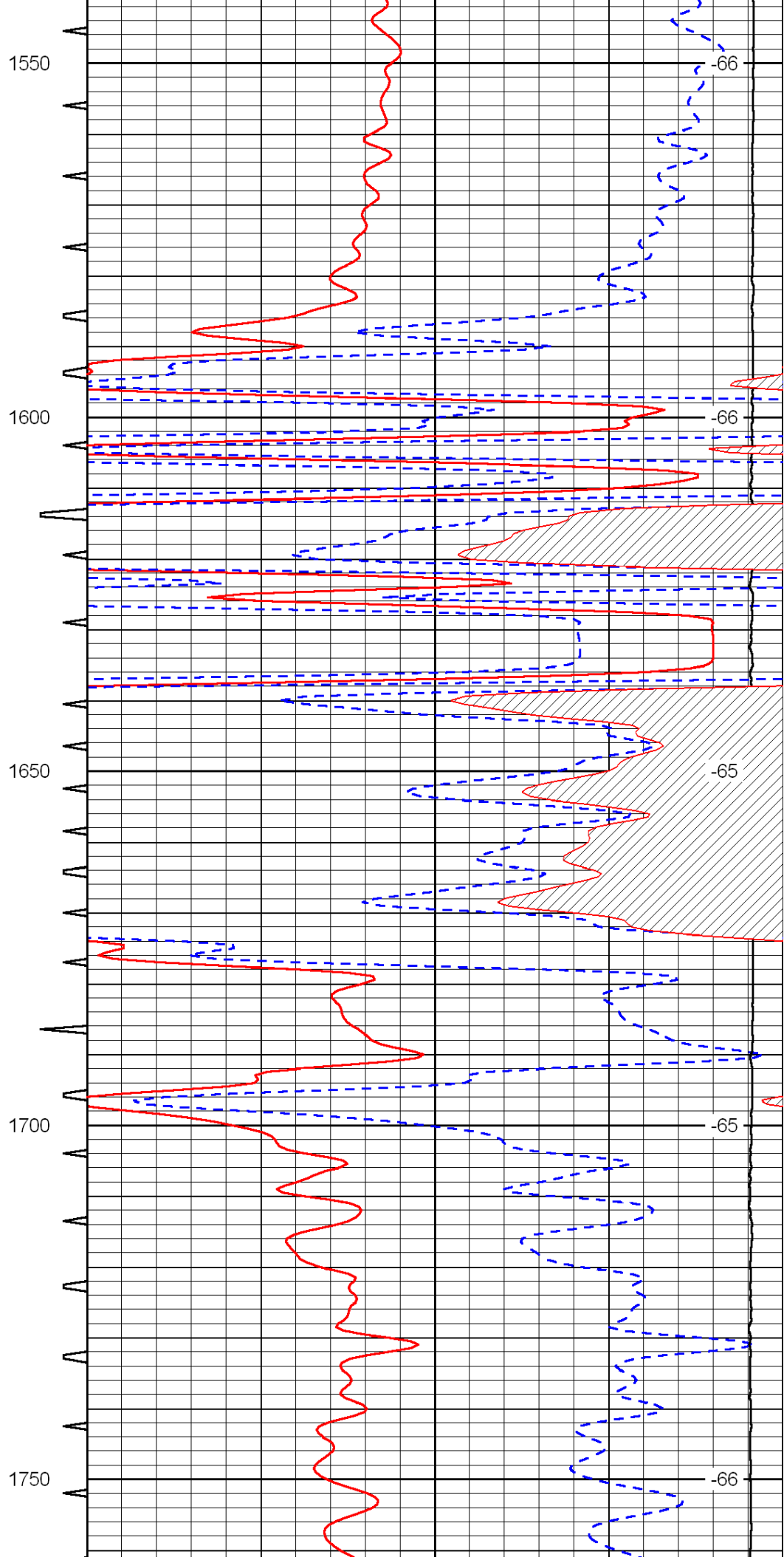
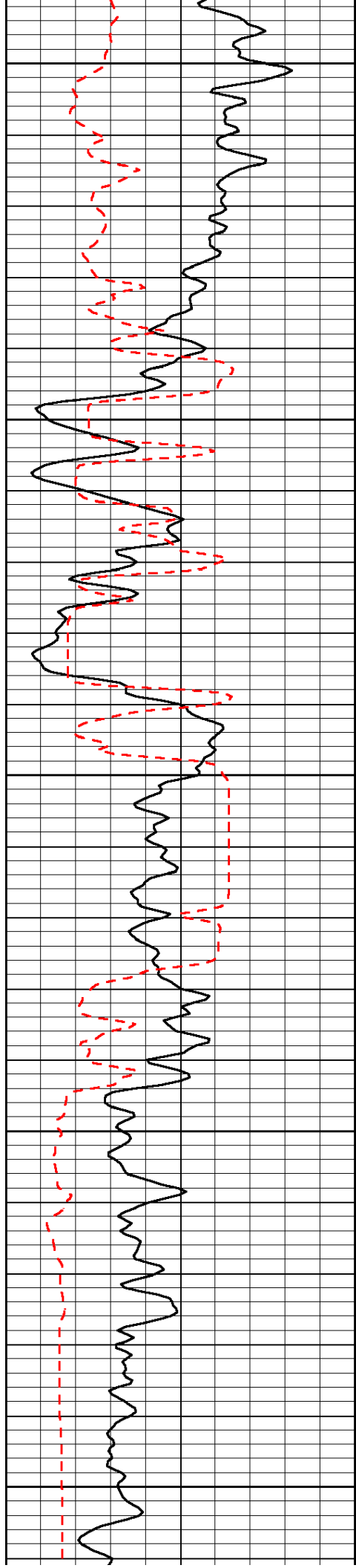


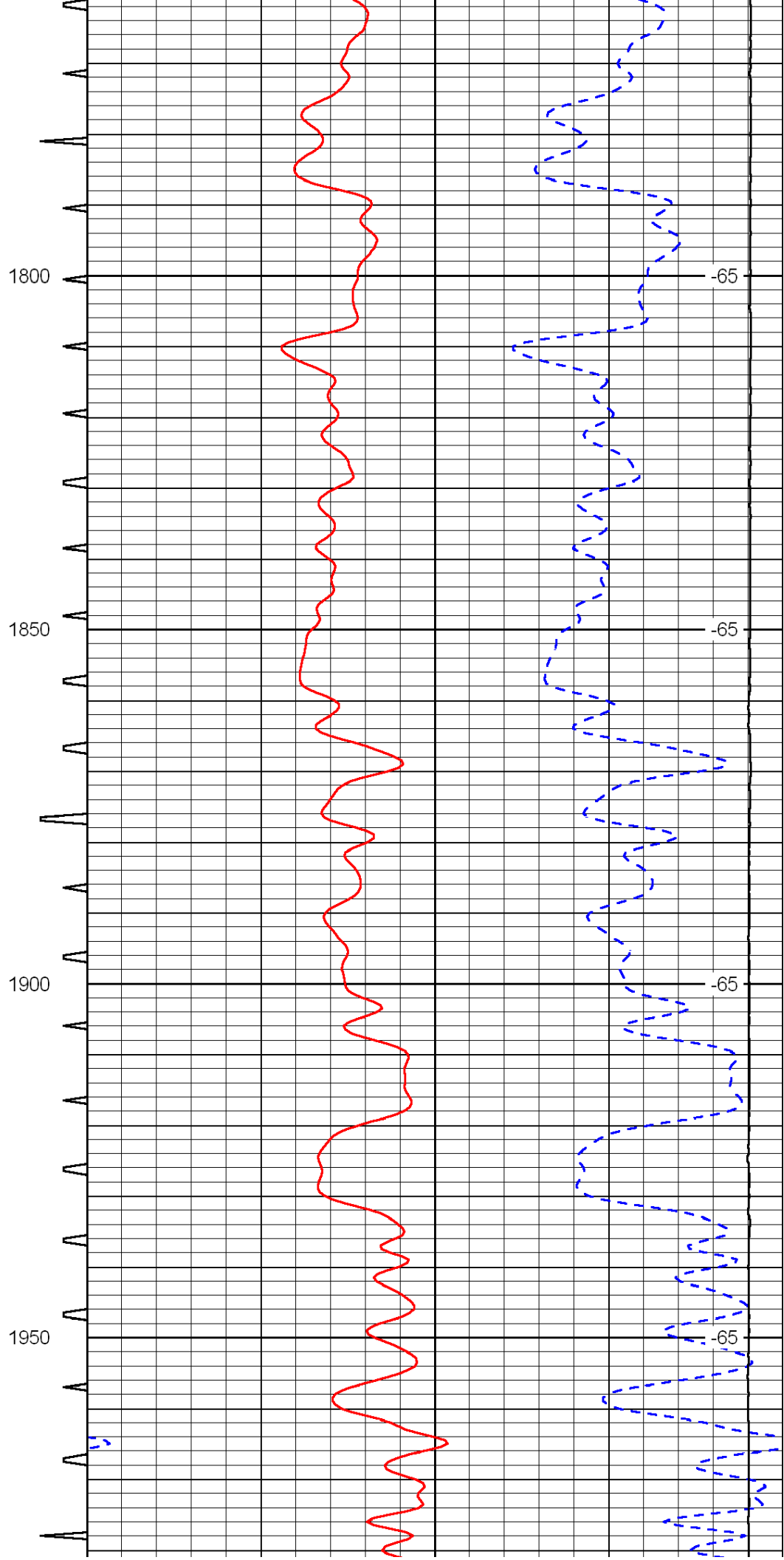
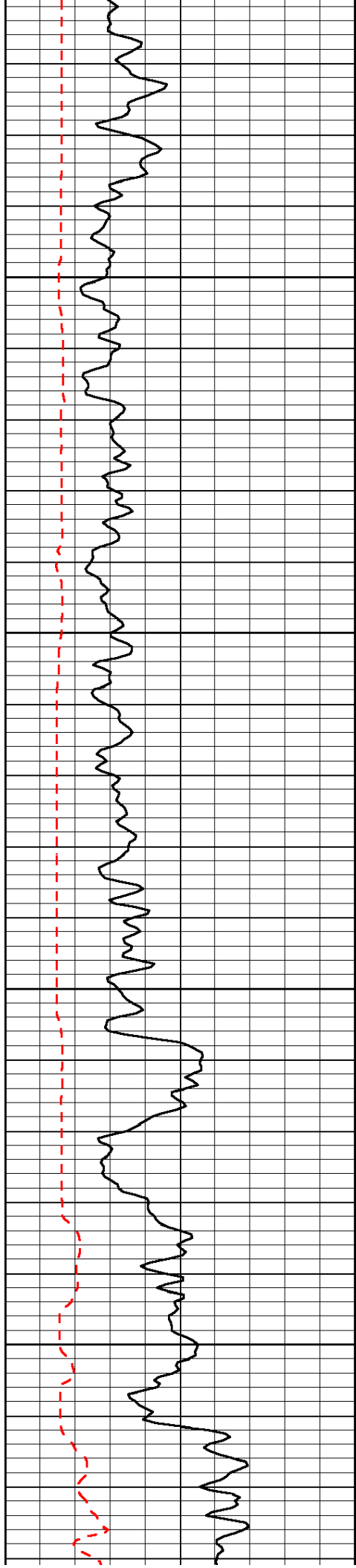


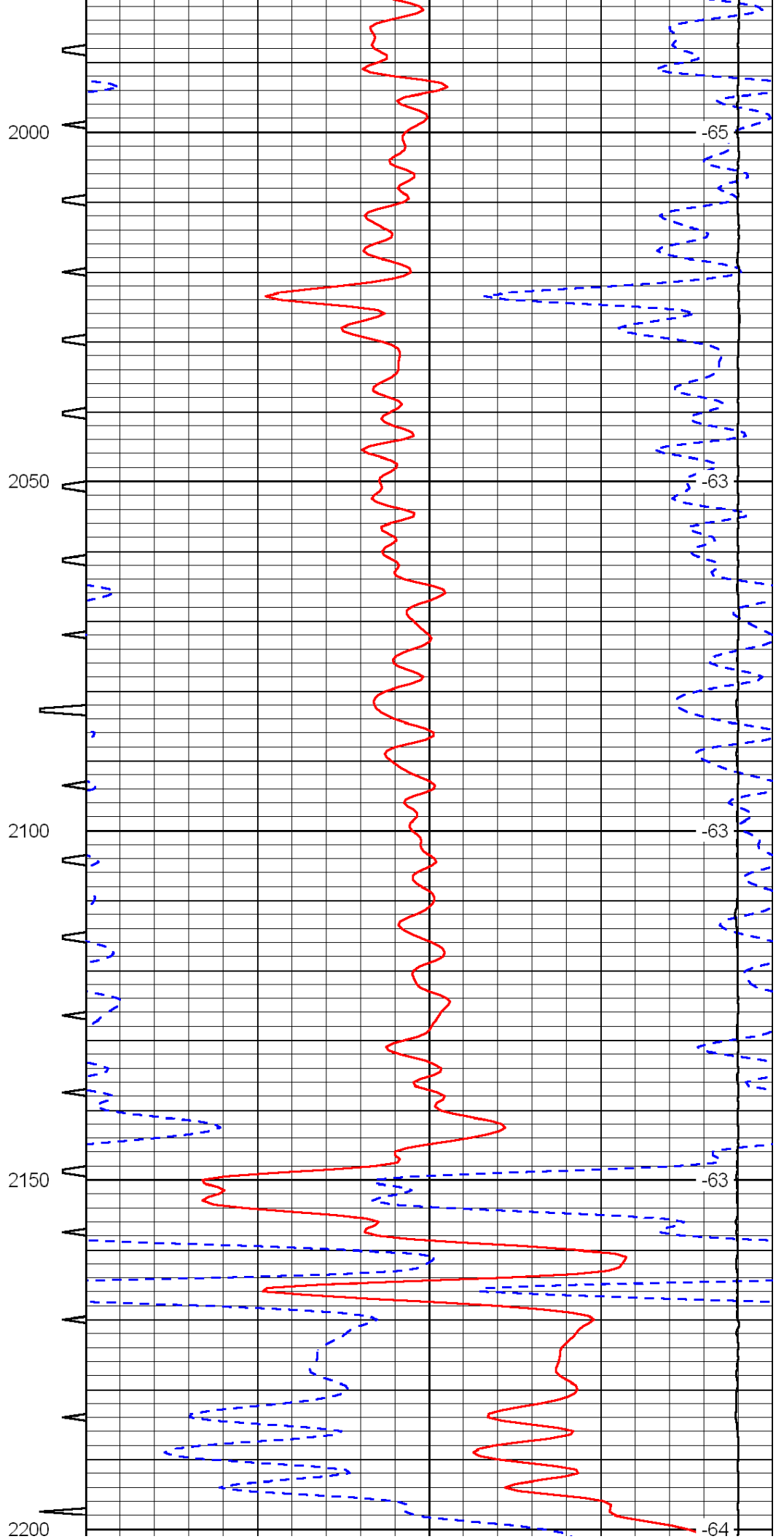
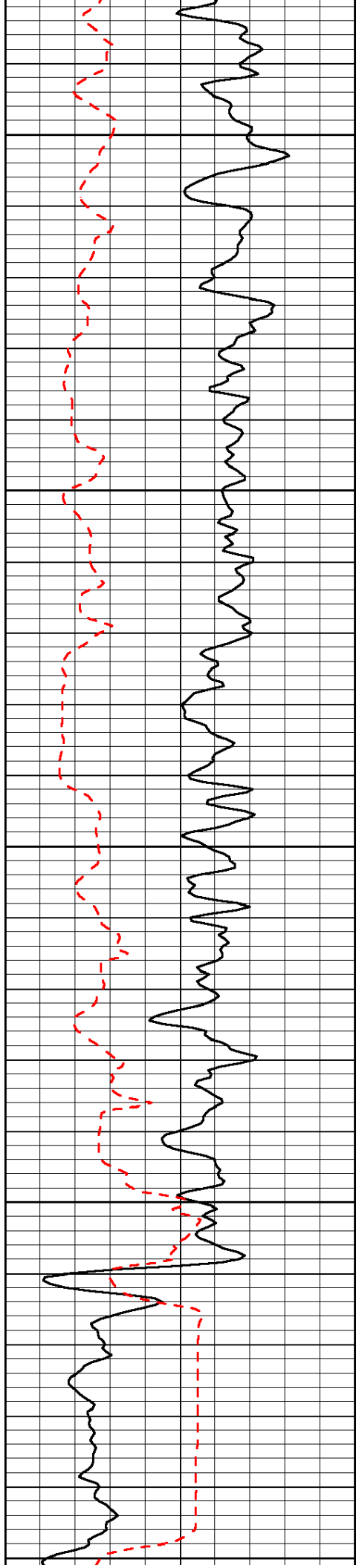


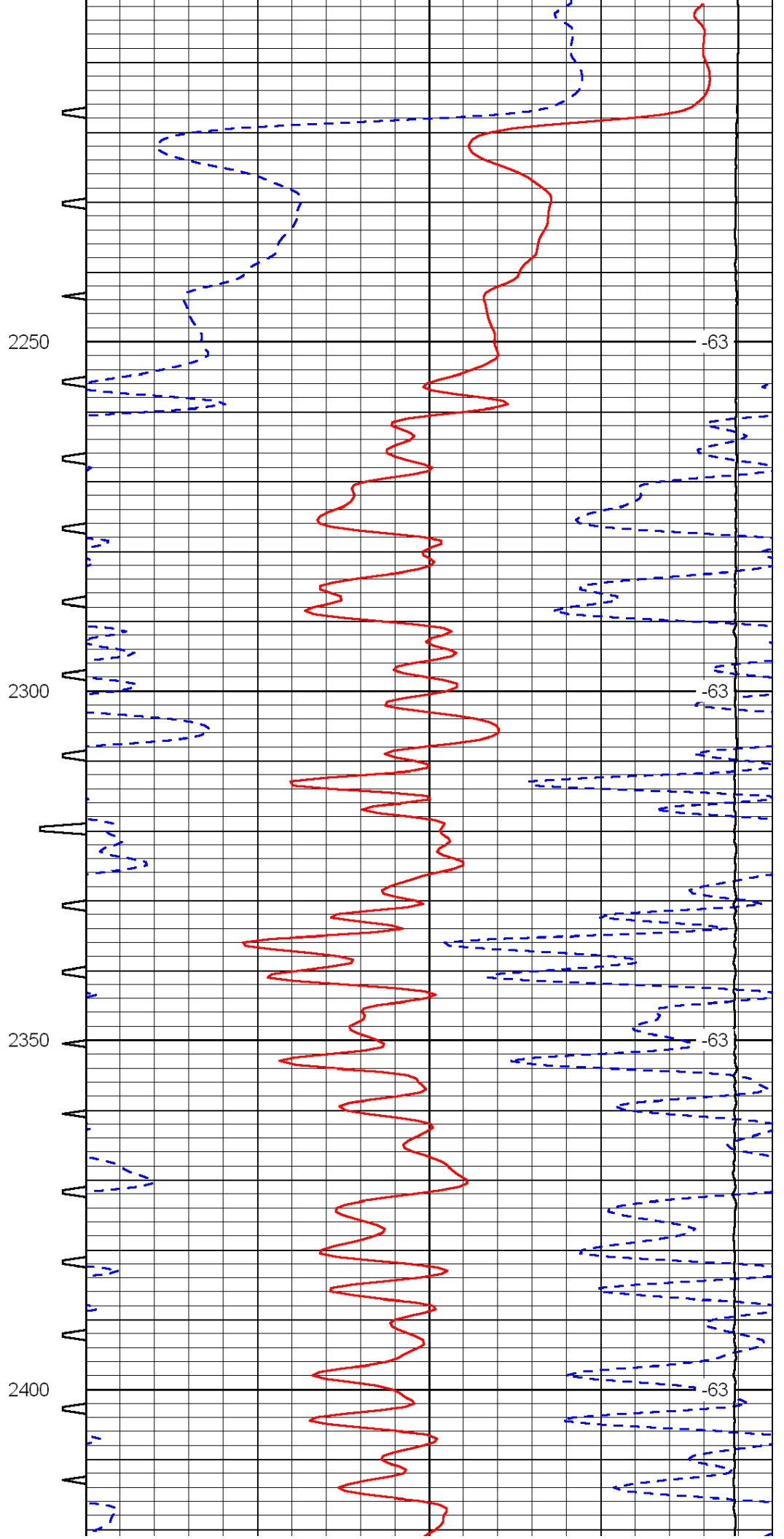
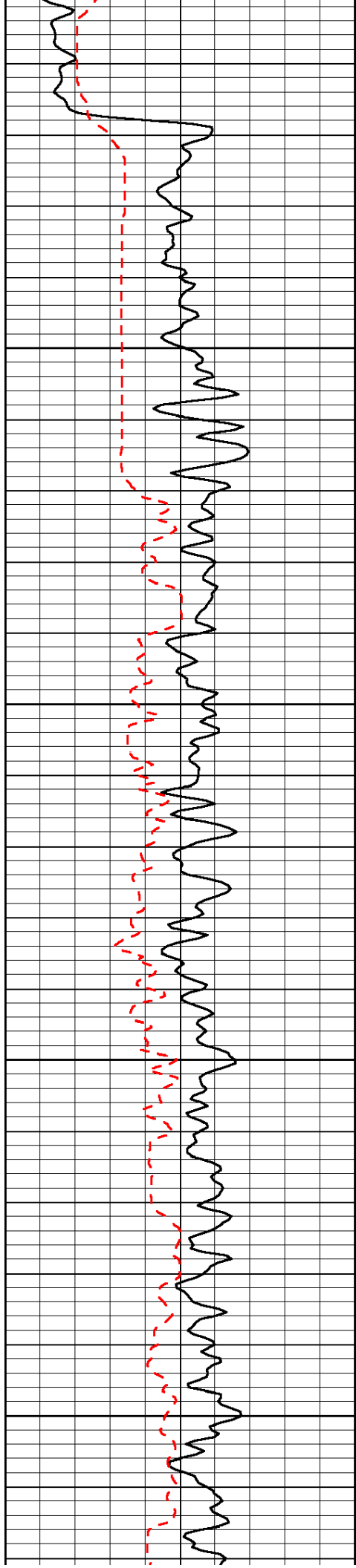


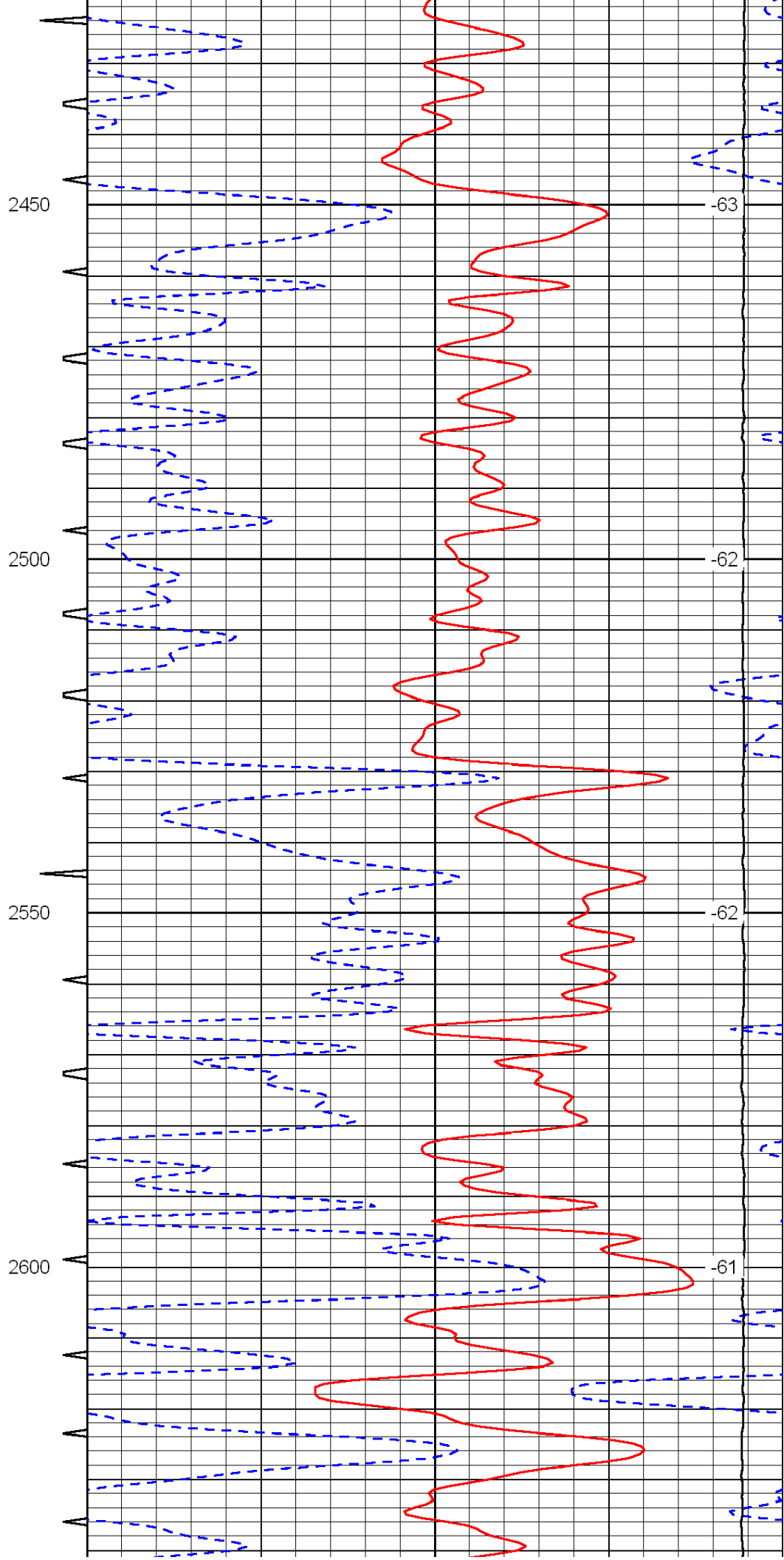
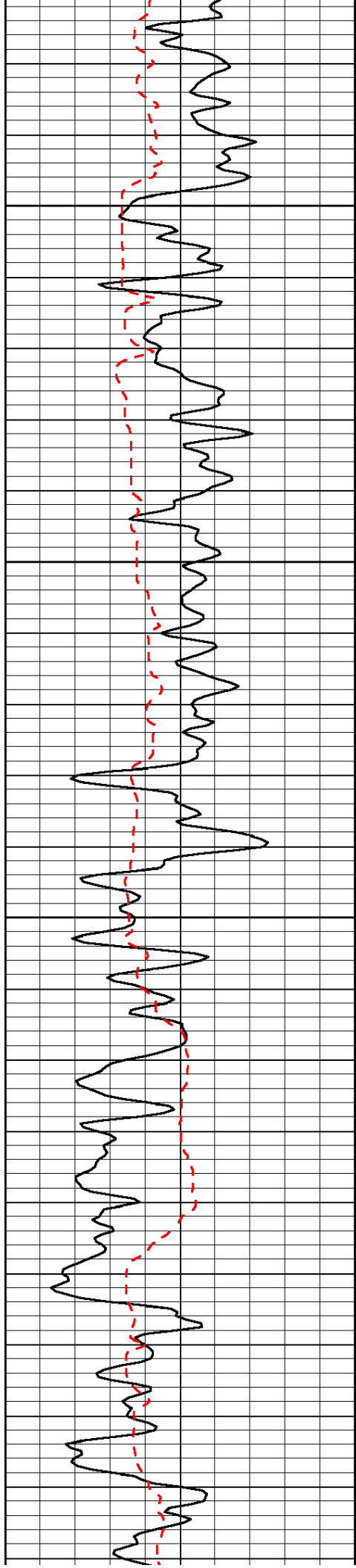


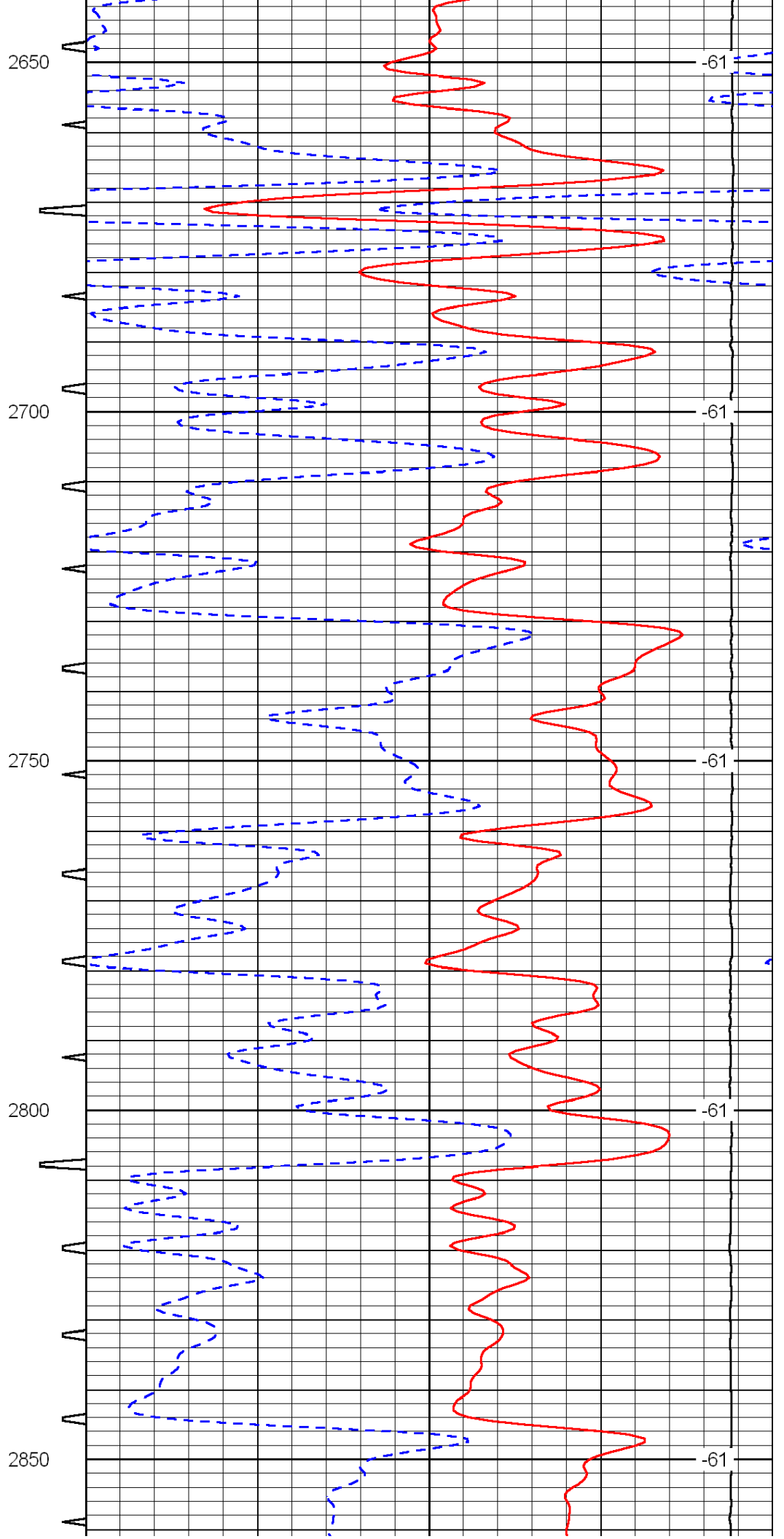
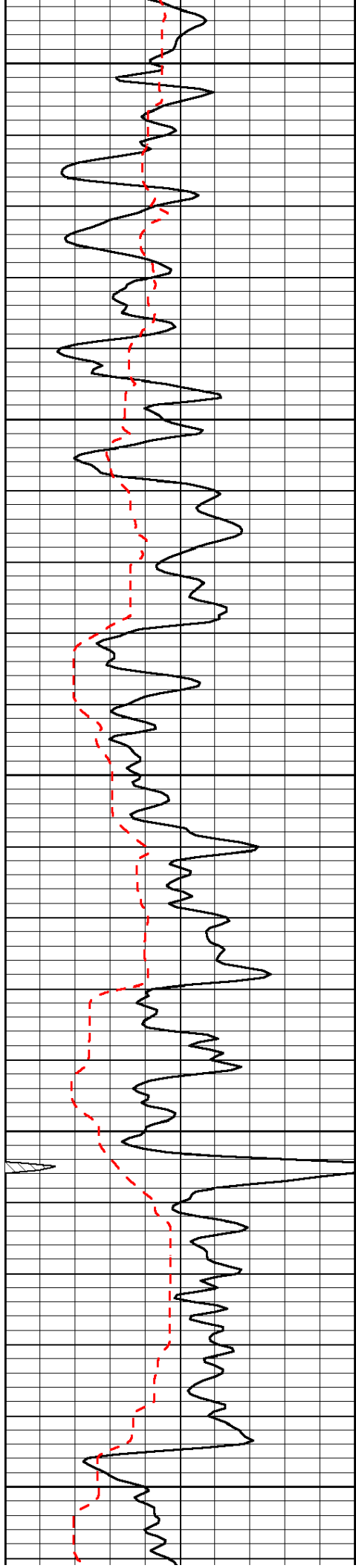


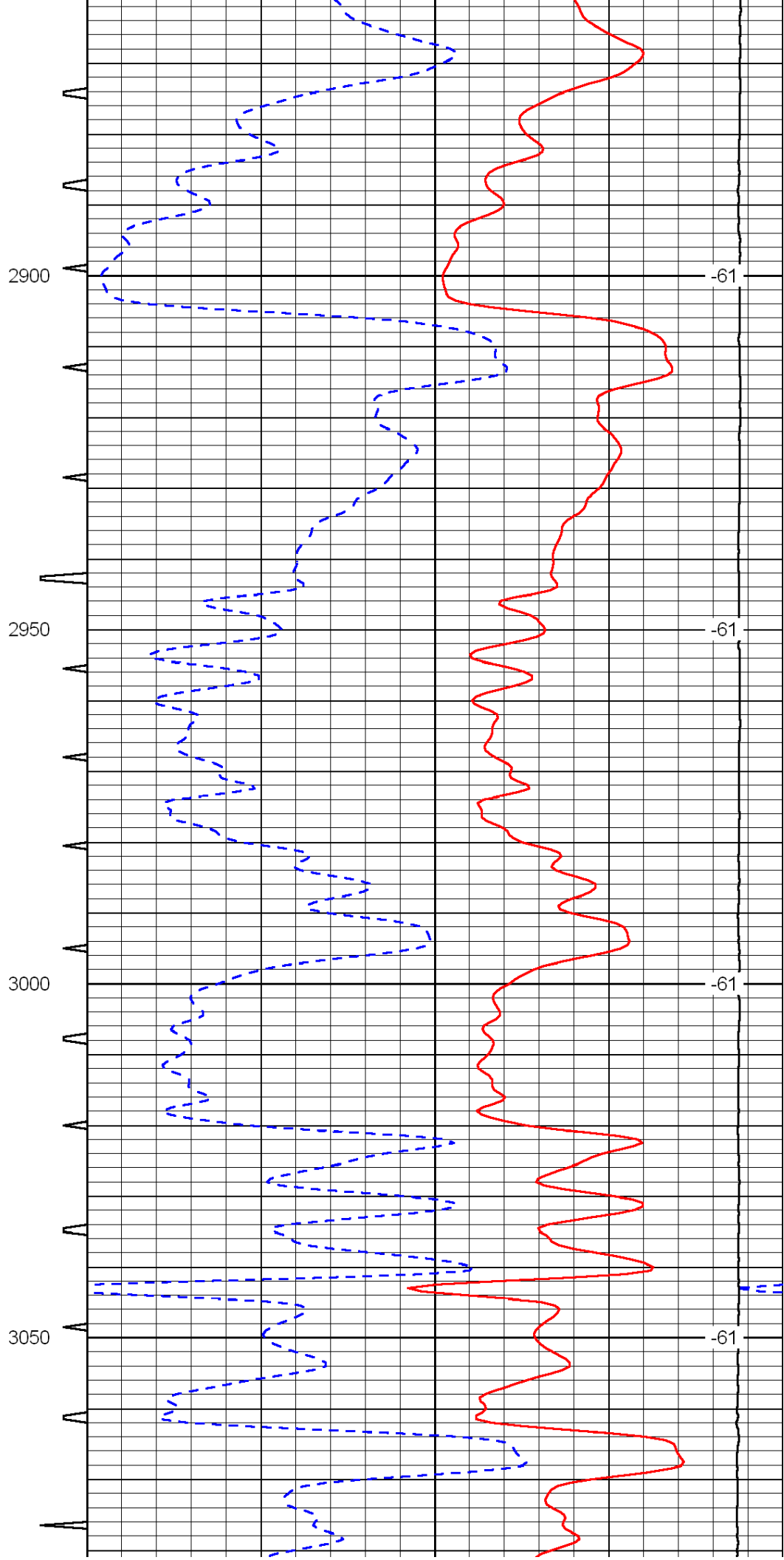
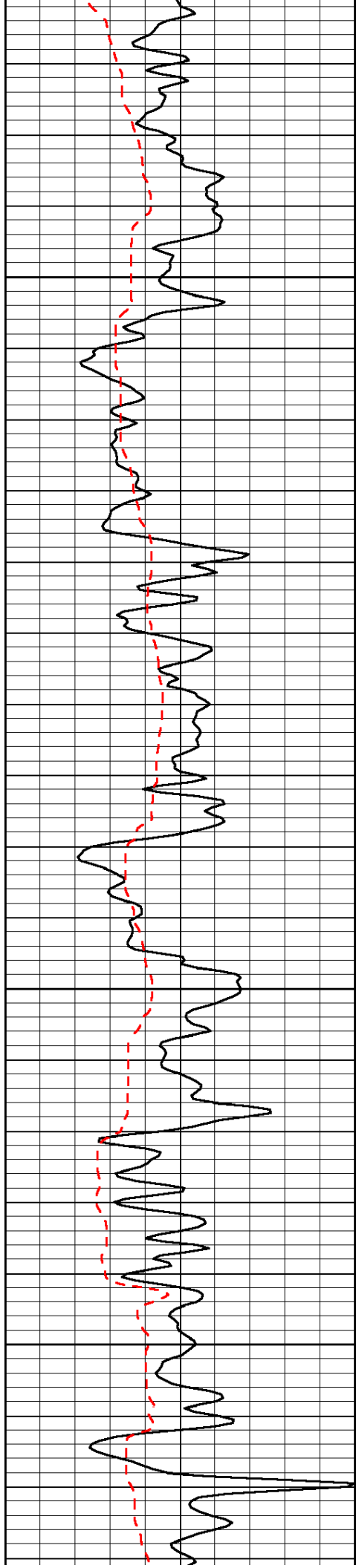


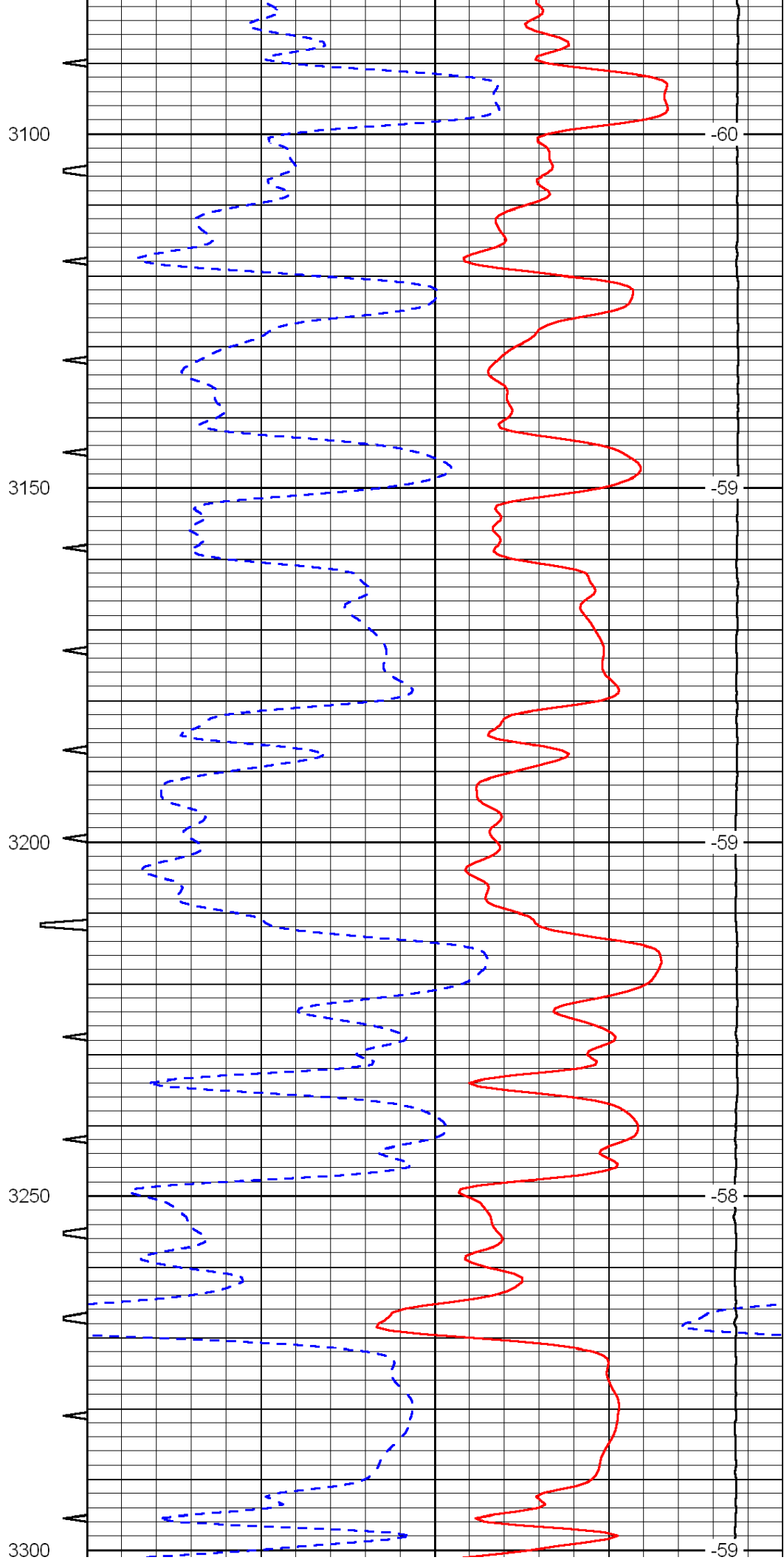
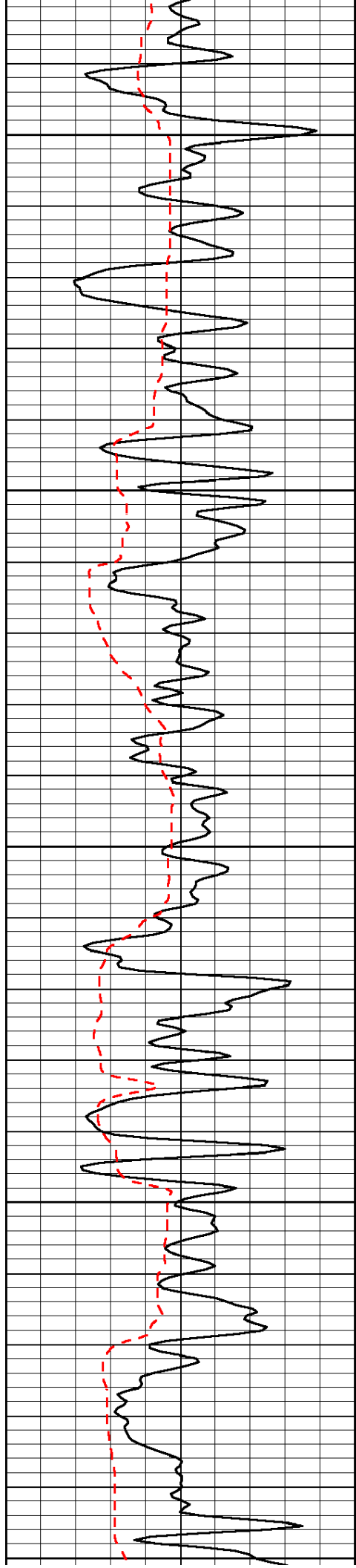


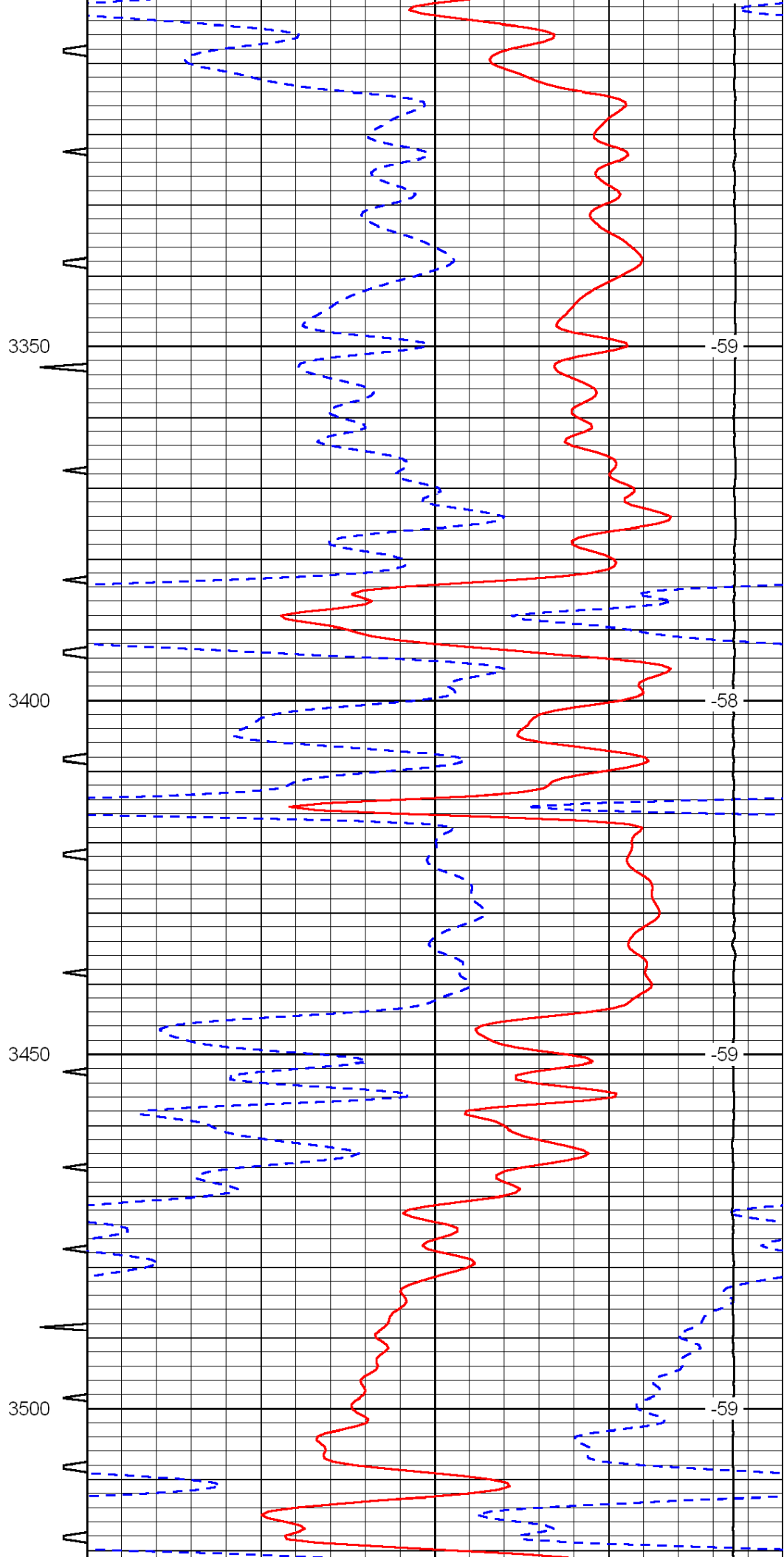
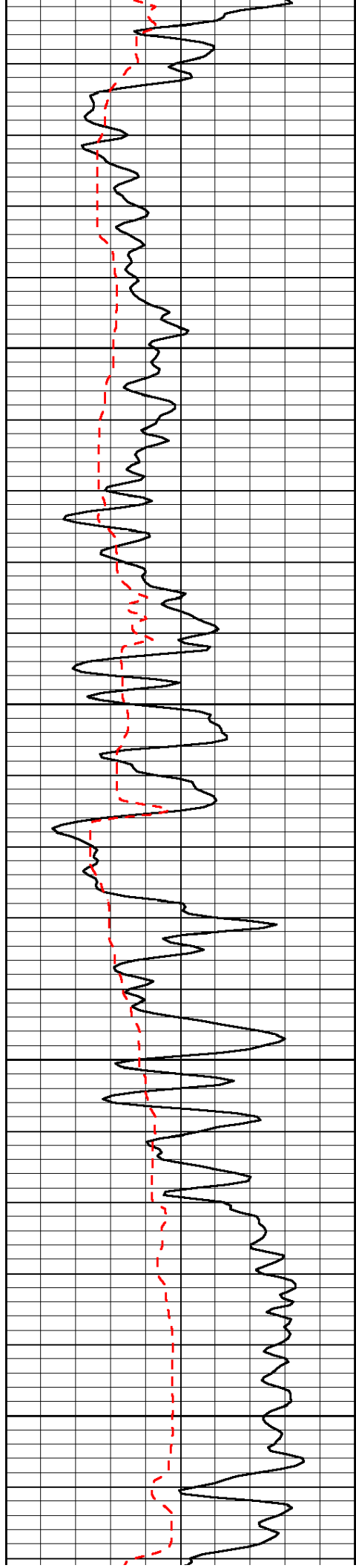


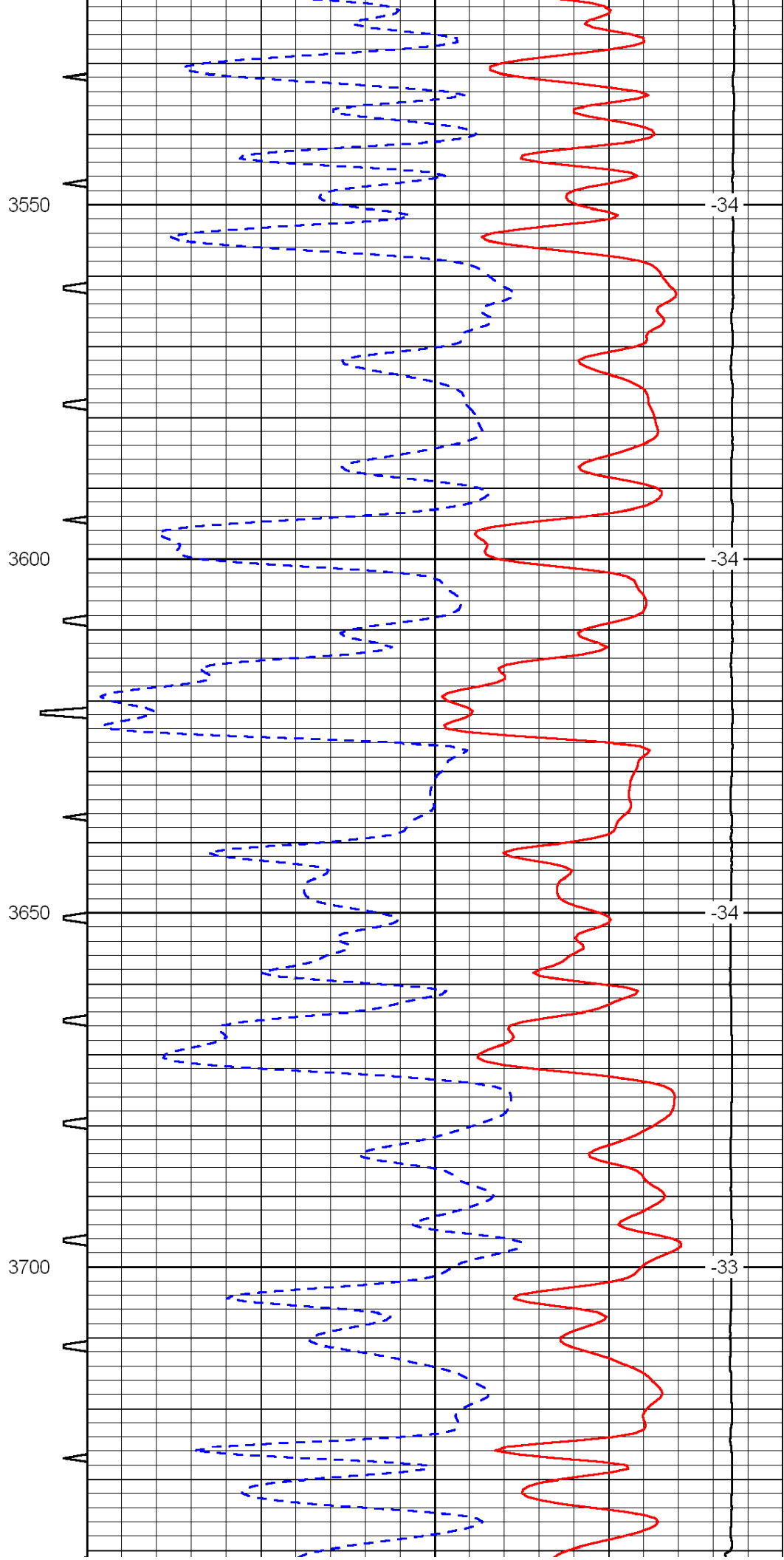
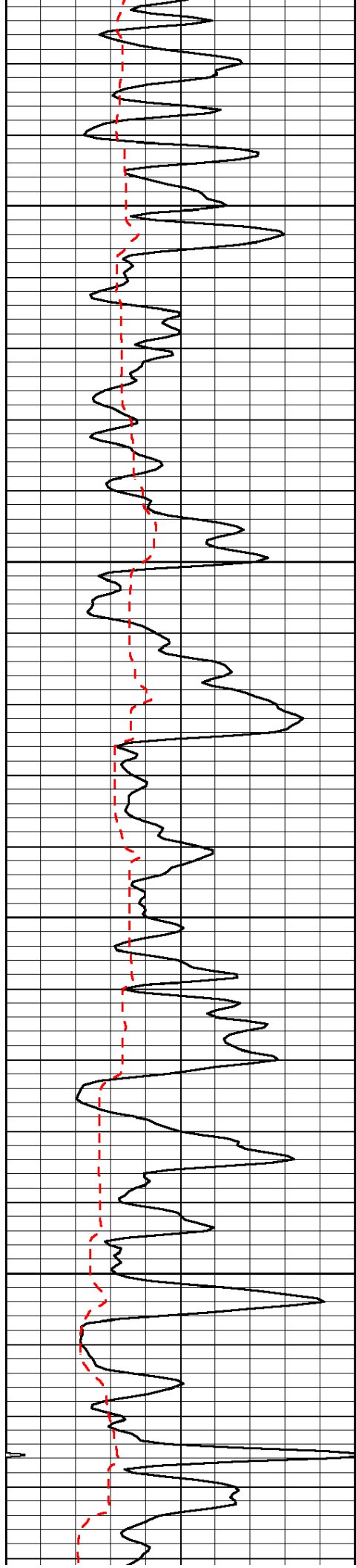


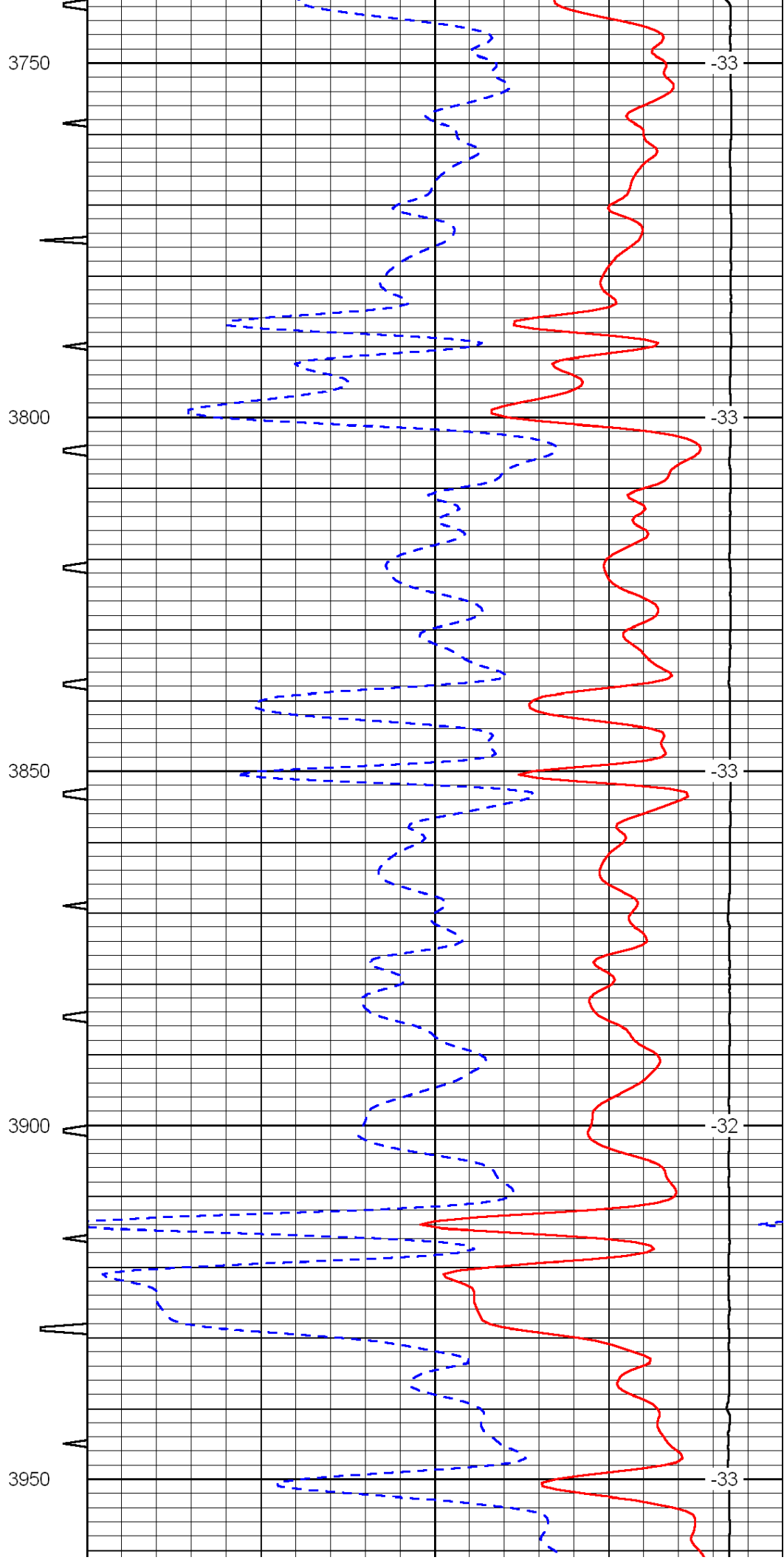
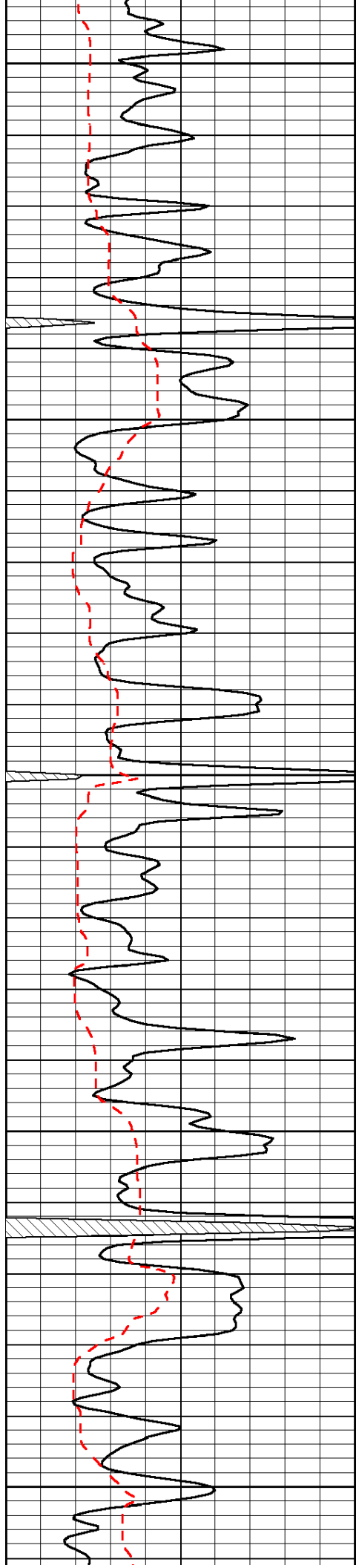


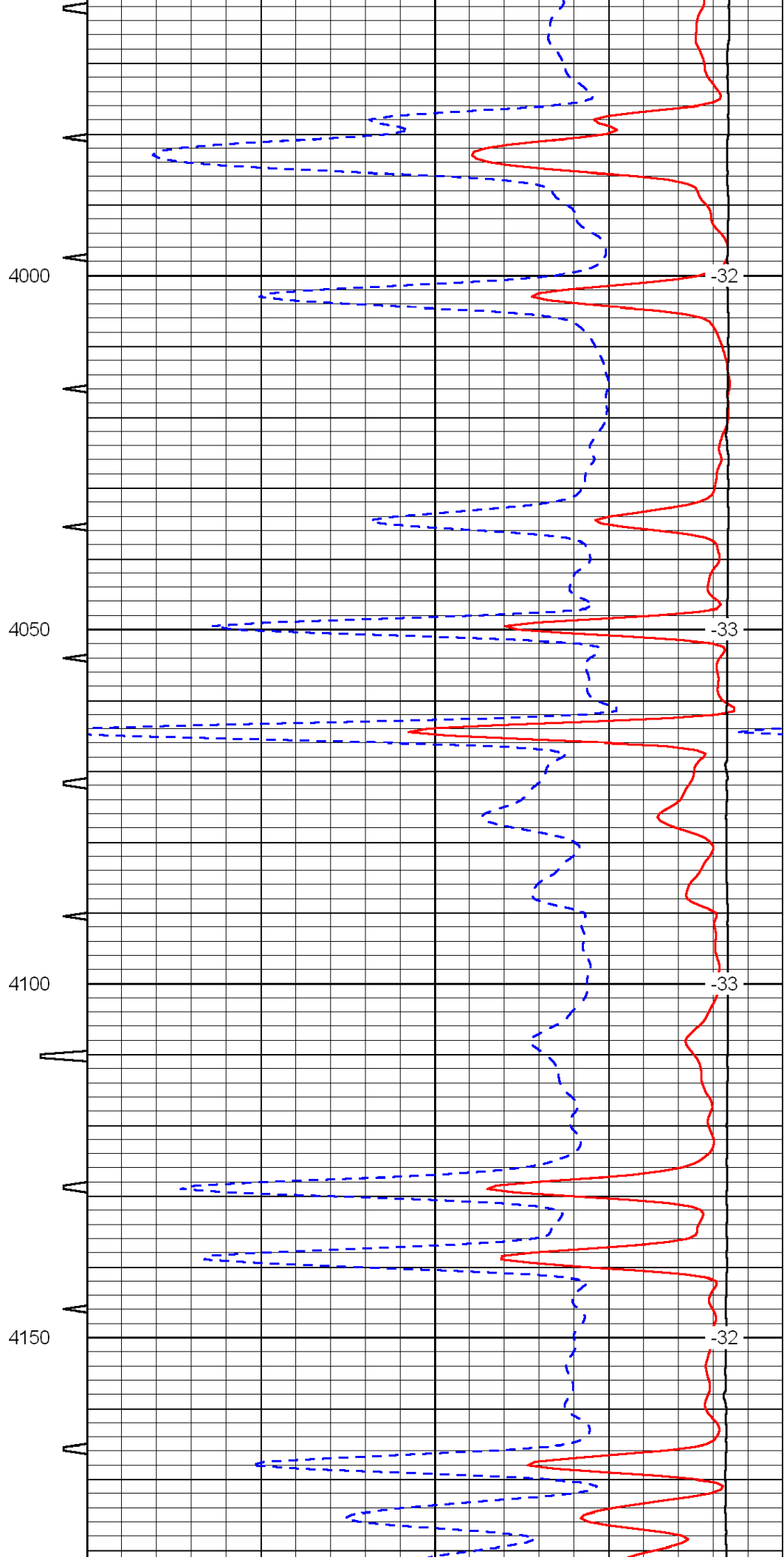
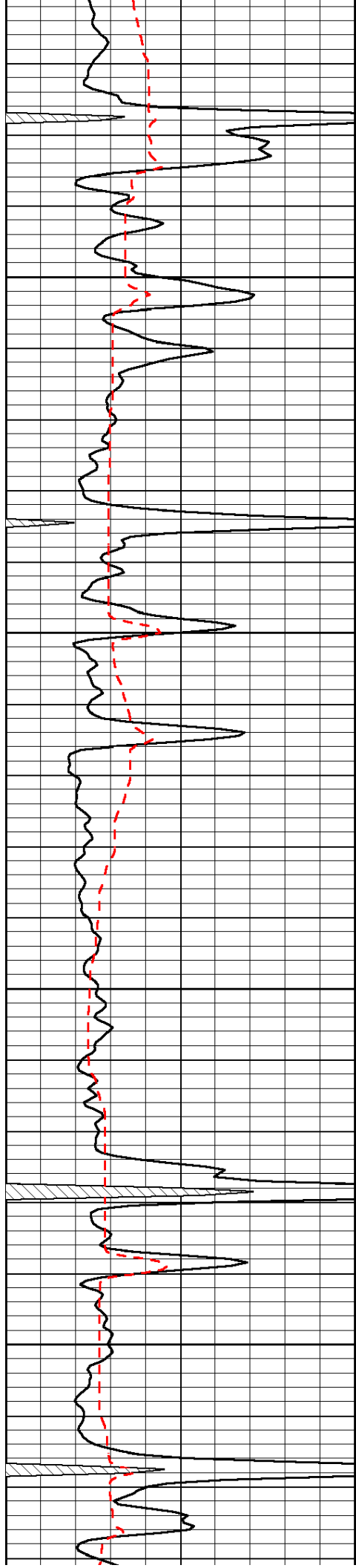


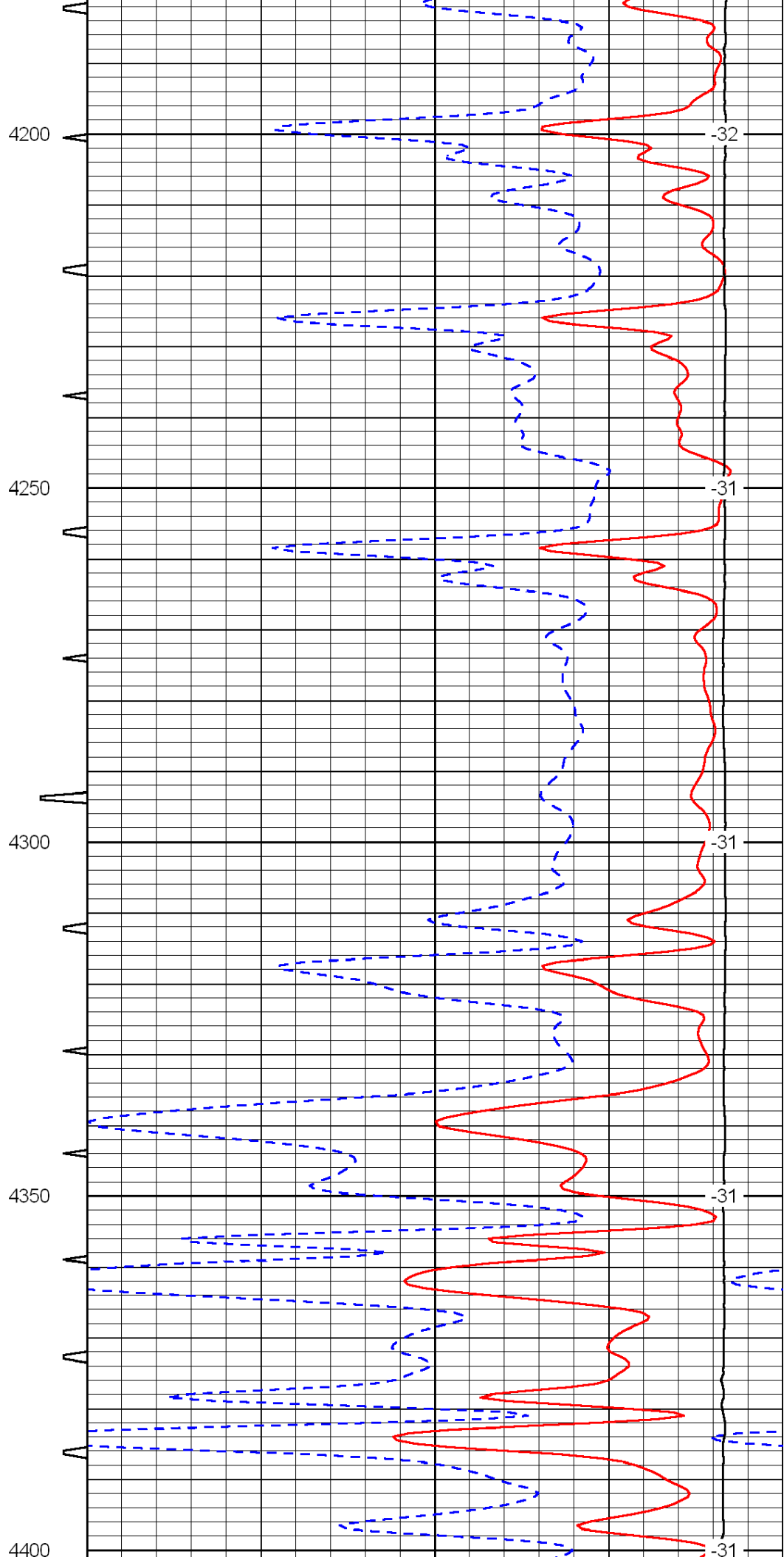
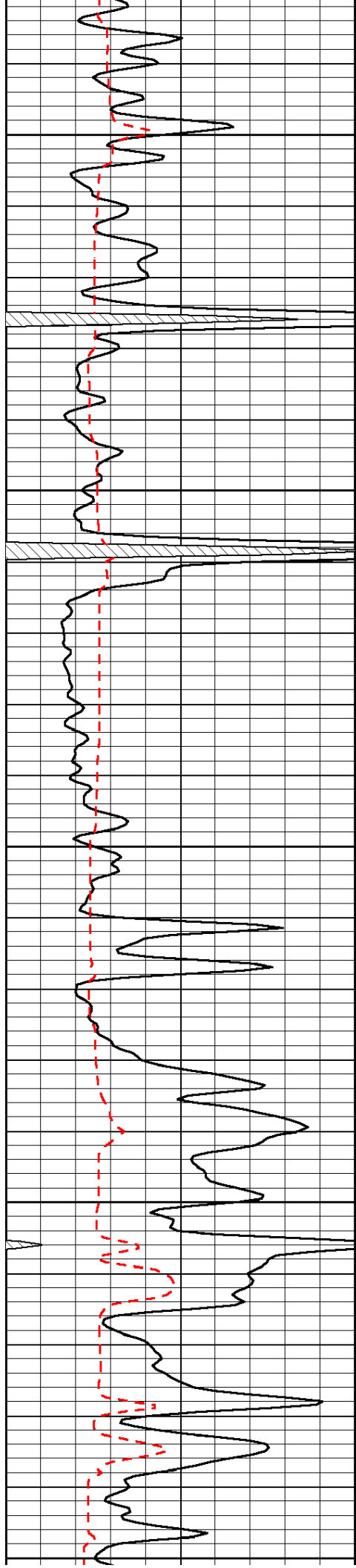


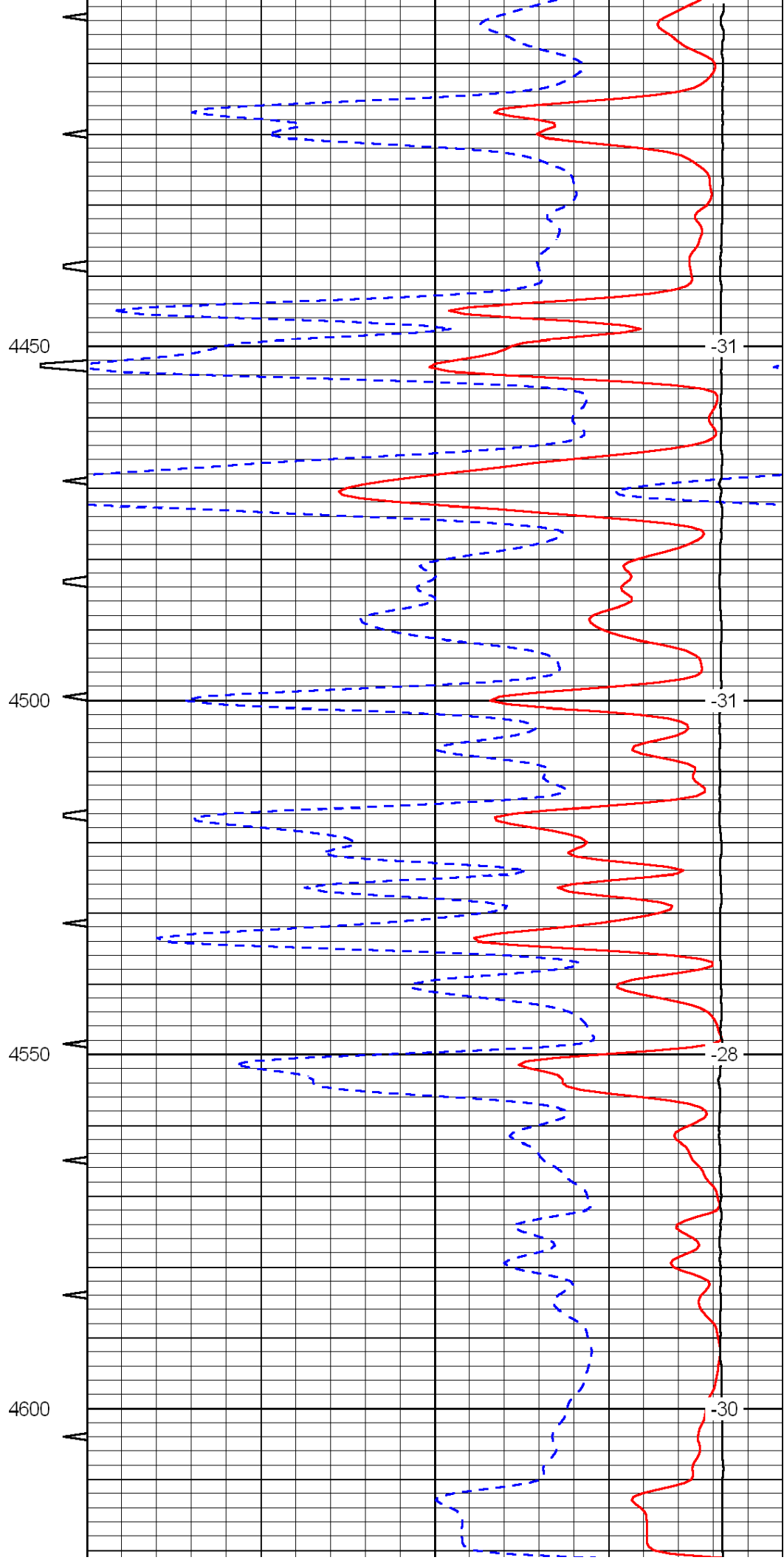
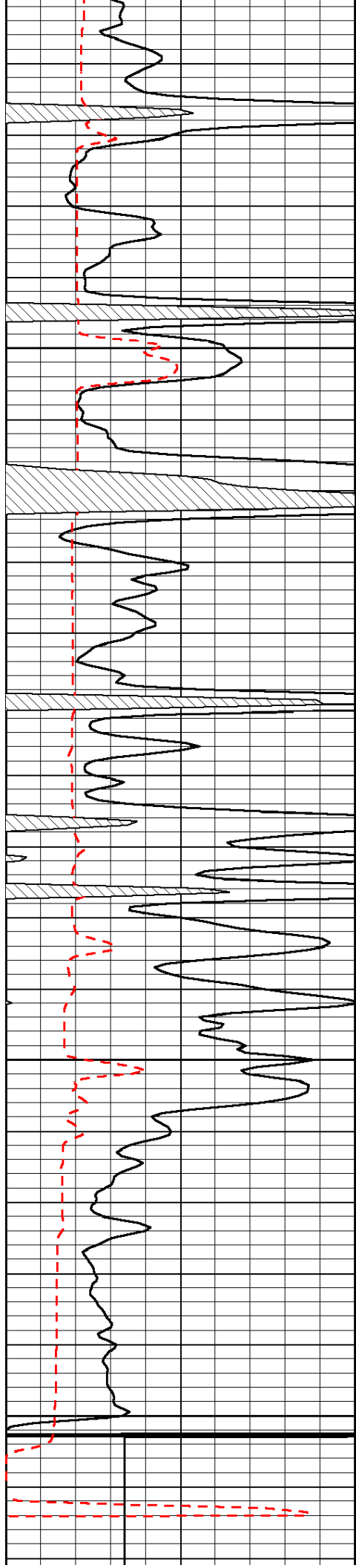


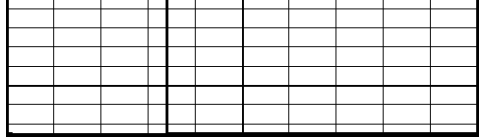




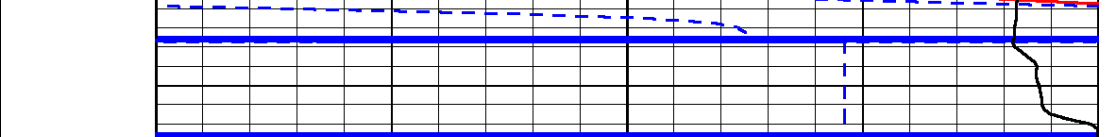








0	Gamma Ray	150
150	Gamma Ray	300
6	Caliper (GAPI)	16



Sonic Int	140	Delta Time (usec/ft)	40
5	0	SPOR	-10
	30	LTEN (lb)	0
	15000		

LSPD