



**DIGITAL LOG** (785) 625-3858

Dual Induction Log

API No. 15-101-22,268-00-00

Company Larson Engineering, Inc.  
 Well Marit No. 2-14  
 Field Wildcat  
 County Lane State Kansas

Location NW SE NE NW  
 768' FNL & 2,242' FWL

Sec: 24 Twp: 18 S Rge: 30 W

Other Services  
 CNL/CDL  
 MEL/BHCS

Permanent Datum	Ground Level	Elevation 2842	K.B. 2849 D.F. 2842 G.L. 2842
Log Measured From	Kelly Bushing	7 Ft. Above Perm. Datum	
Drilling Measured From	Kelly Bushing		
Date	1/2/2011		
Run Number	Two		
Depth Driller	4617		
Depth Logger	4626		
Bottom Logged Interval	4625		
Top Log Interval	250		
Casing Driller	8.625 @ 256		
Casing Logger	255		
Bit Size	7.875		
Type Fluid in Hole	Chemical		
Salinity, ppm CL	2600		
Density / Viscosity	9.5   54		
pH / Fluid Loss	11   7.6		
Source of Sample	Flowline		
Rm @ Meas. Temp	1.05 @ 53		
Rmf @ Meas. Temp	.79 @ 53		
Rmc @ Meas. Temp	1.42 @ 53		
Source of Rmf / Rmc	Charts		
Rm @ BHT	.46 @ 122		
Operating Rig Time	5 Hours		
Max Rec. Temp. F	122		
Equipment Number	10		
Location	Hays		
Recorded By	J Schuler		J Long
Witnessed By	Vern Schrag		

<<< Fold Here >>>

All interpretations are opinions based on inferences from electrical or other measurements and we cannot and do not guarantee the accuracy or correctness of any interpretation, and we shall not, except in the case of gross or willful negligence on our part, be liable or responsible for any loss, costs, damages, or expenses incurred or sustained by anyone resulting from any interpretation made by any of our officers, agents or employees. These interpretations are also subject to our general terms and conditions set out in our current Price Schedule.

Comments

Thank you for using Log-Tech, Inc.  
 (785) 625-3858

Dighton, 7 West to Eagle Road, South 1/8th Mile, East Into

Database File: c:\warrior\data\larson\_marit no. 2-14\larson.db  
 Dataset Pathname: dil\larstk  
 Presentation Format: dil2in  
 Dataset Creation: Mon Jan 03 02:40:00 2011  
 Charted by: Depth in Feet scaled 1:600

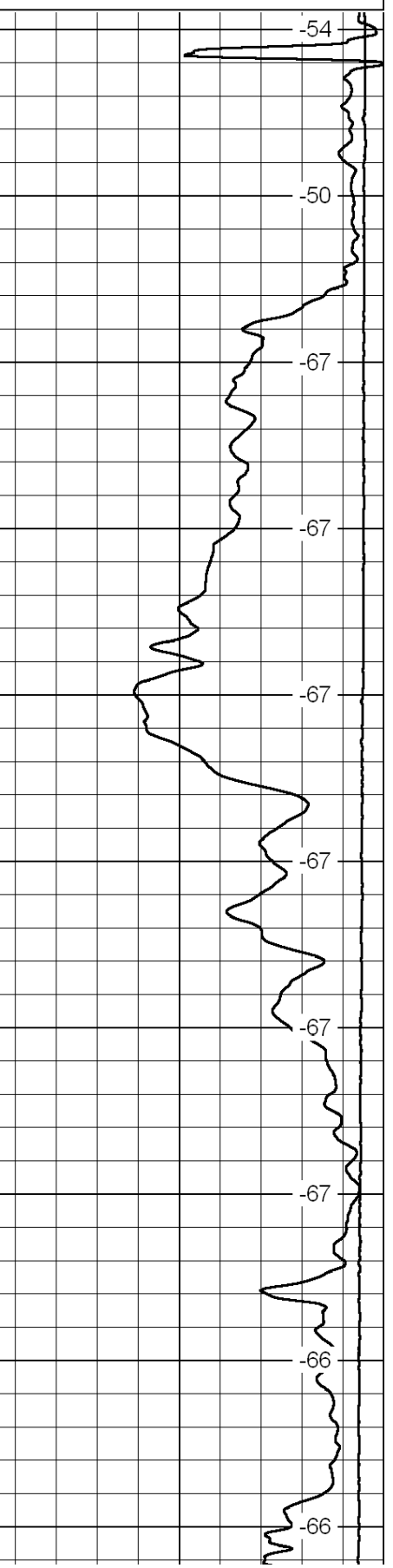
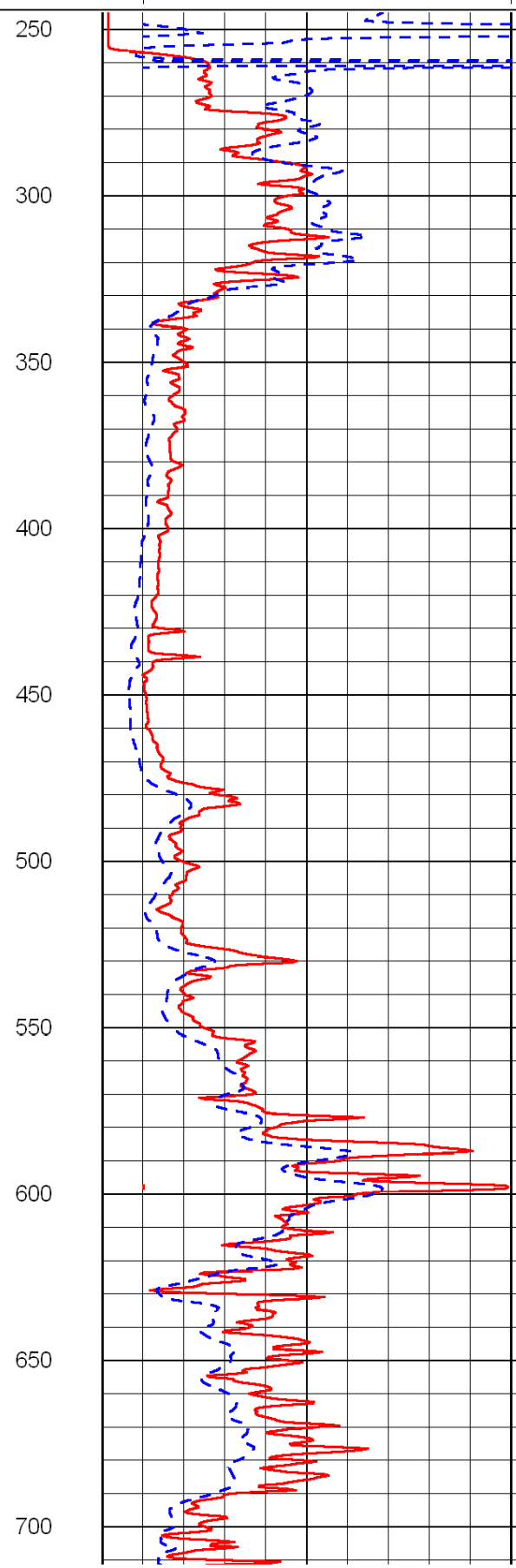
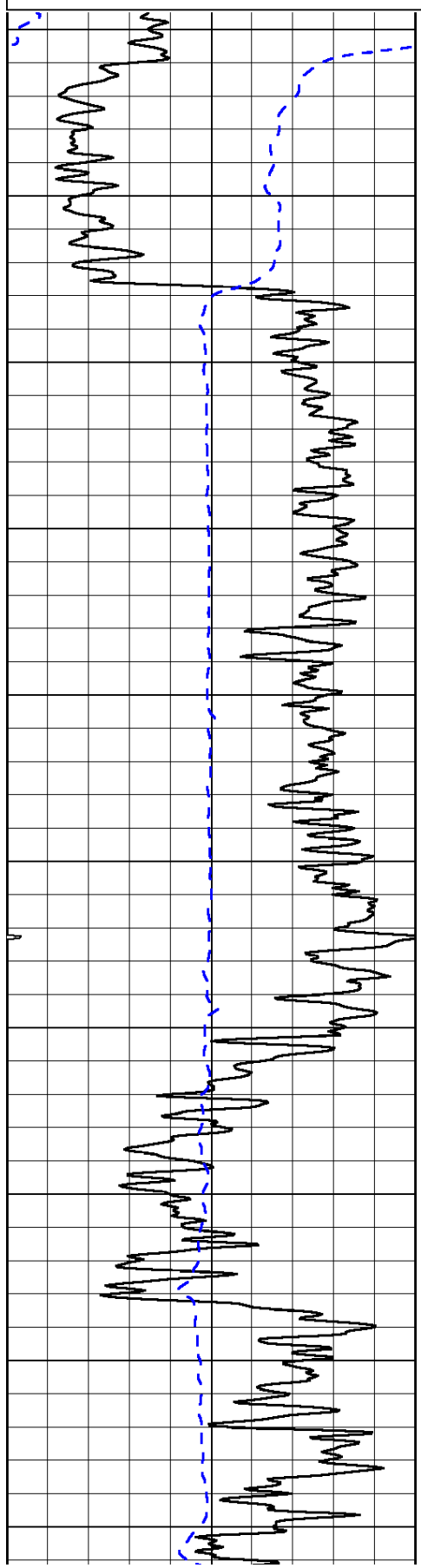
0	Gamma Ray	150
-200	SP (mV)	0

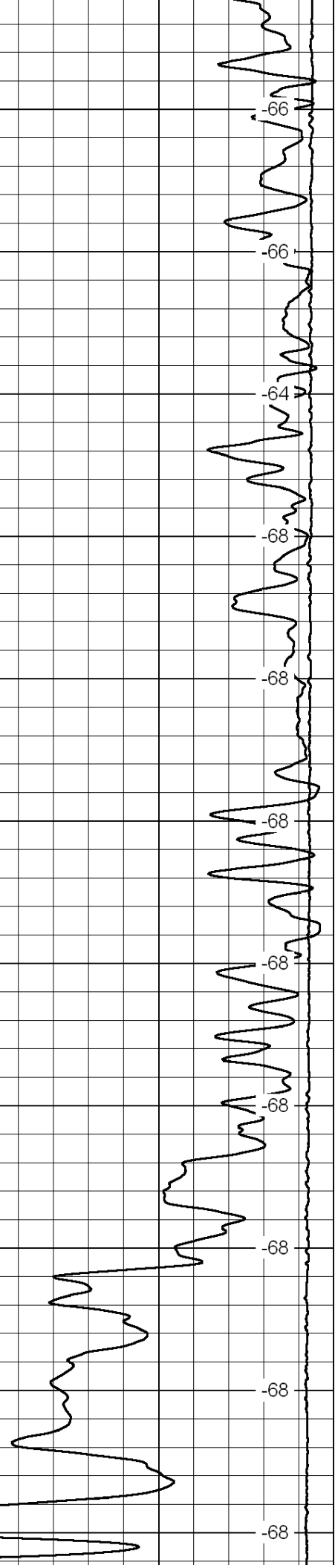
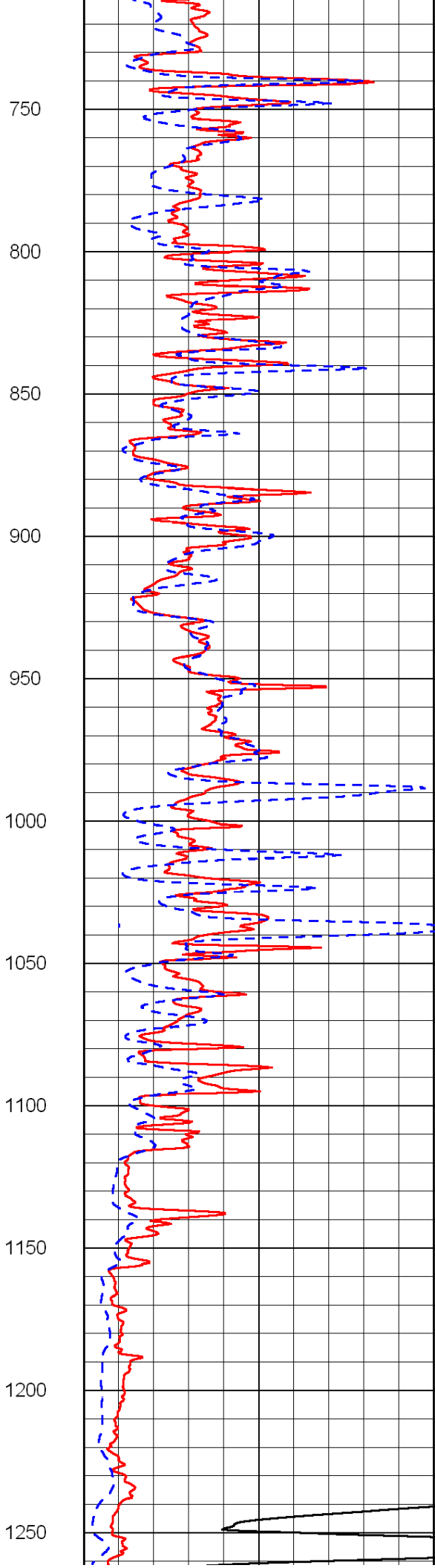
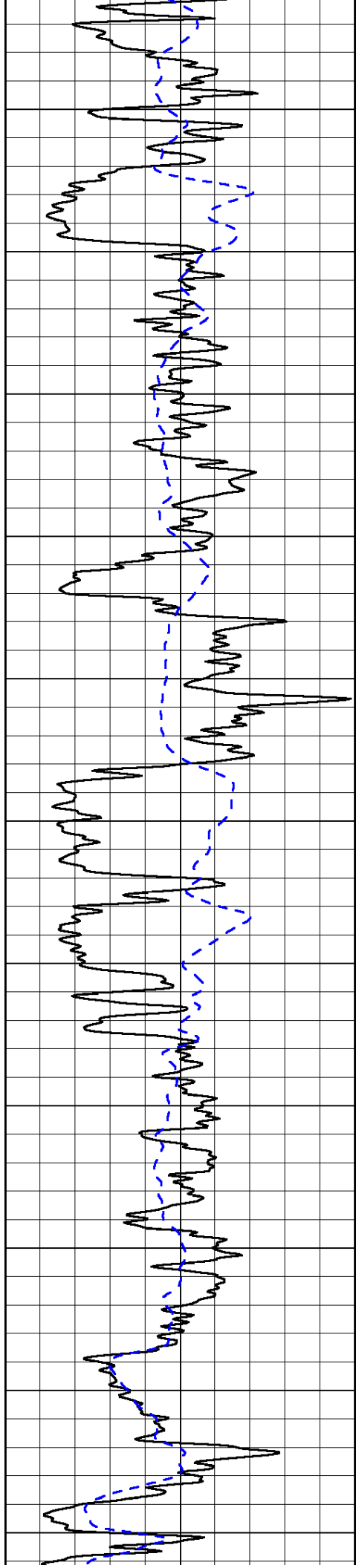
0	Shallow Resistivity	50
0	Deep Resistivity	50

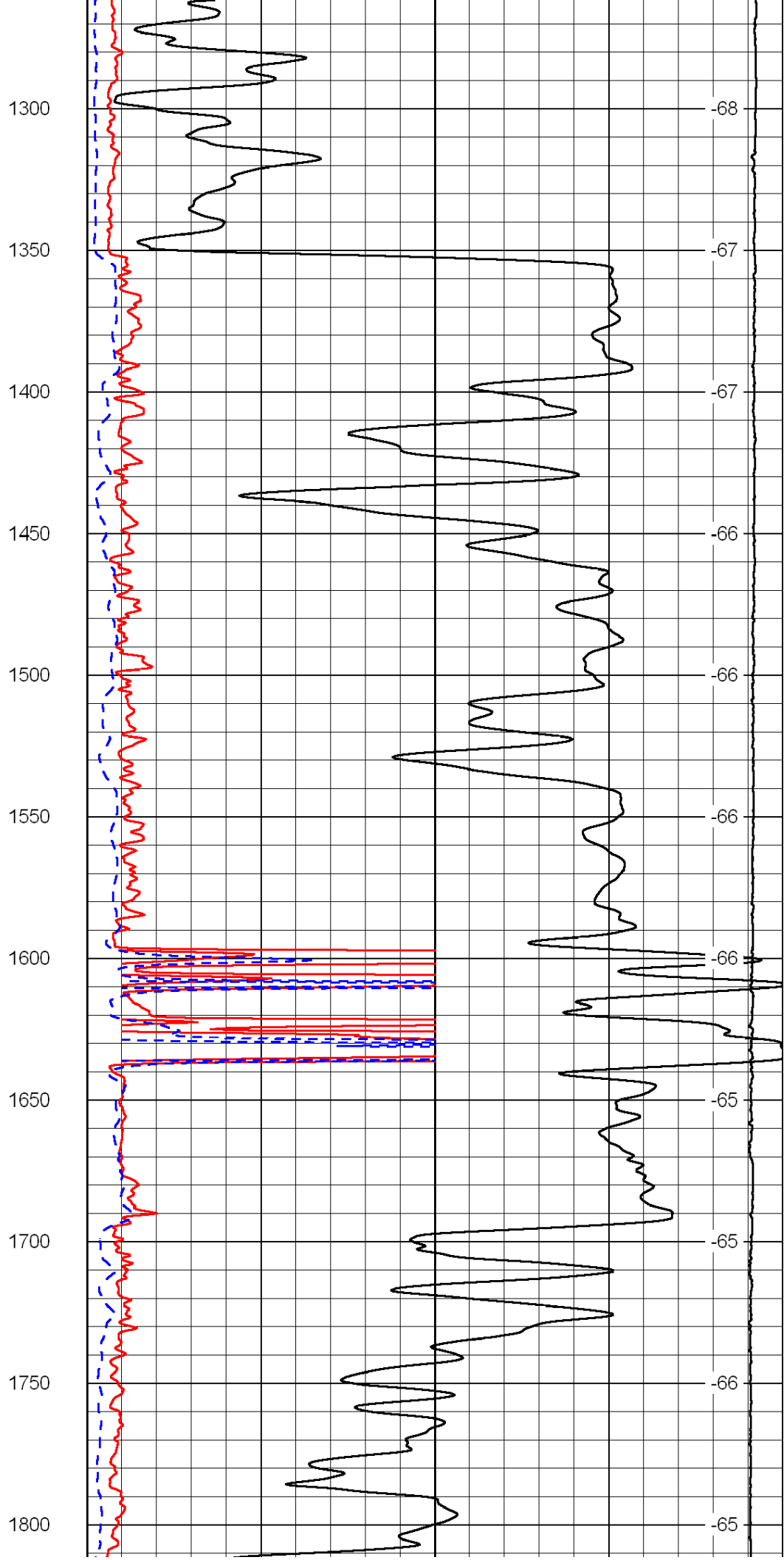
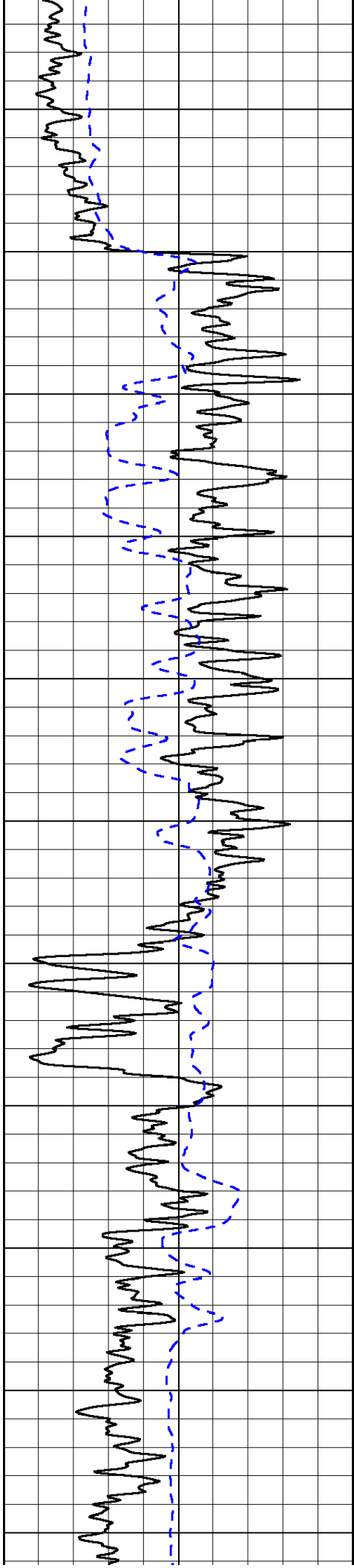
LSPD

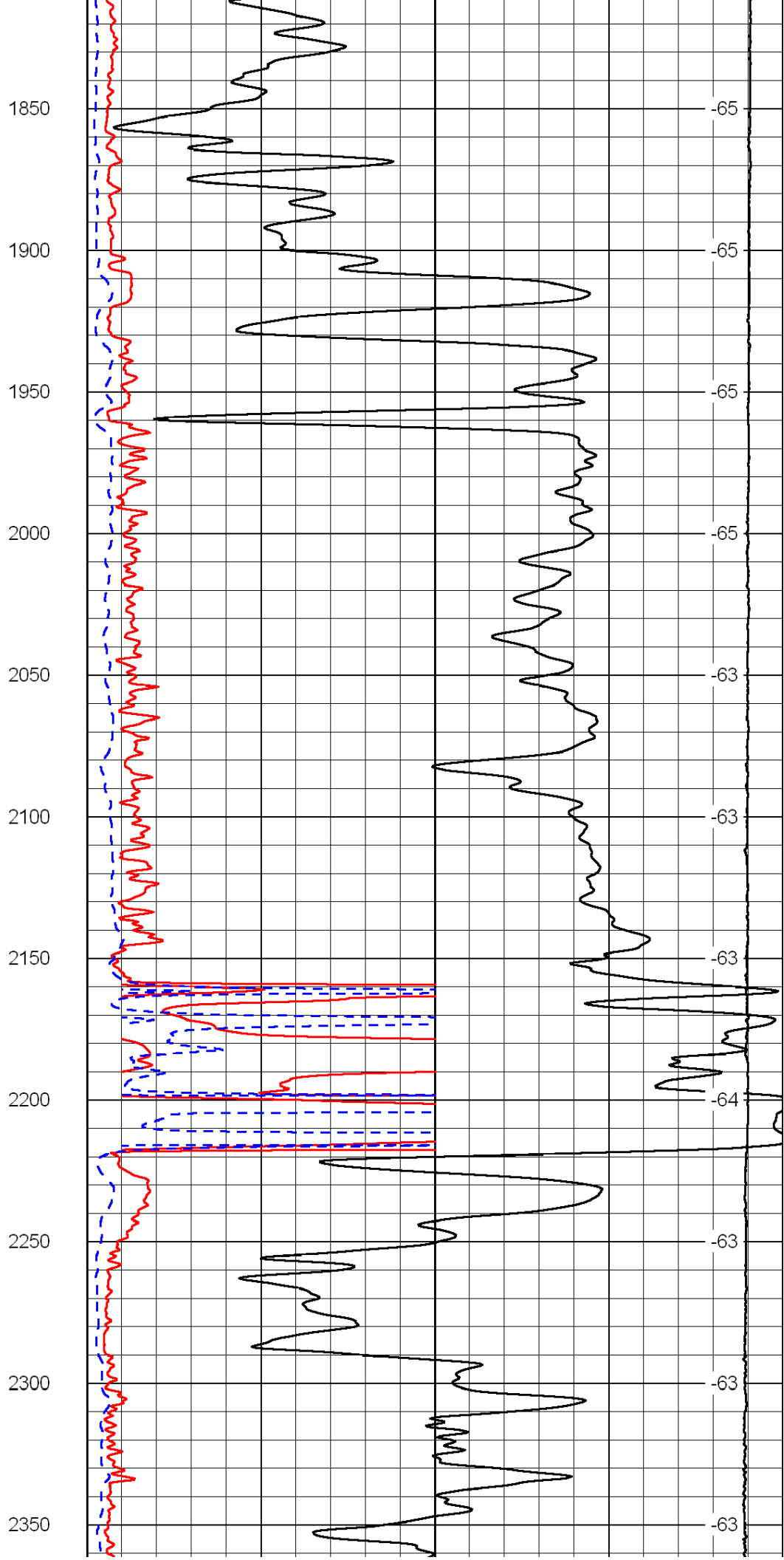
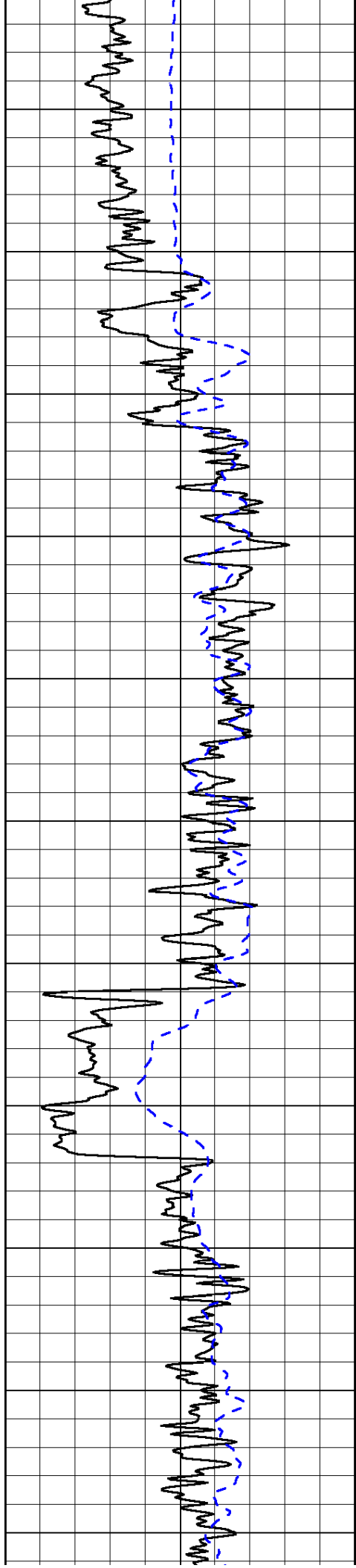
1000	Conductivity	0
15000	Line Tension	0

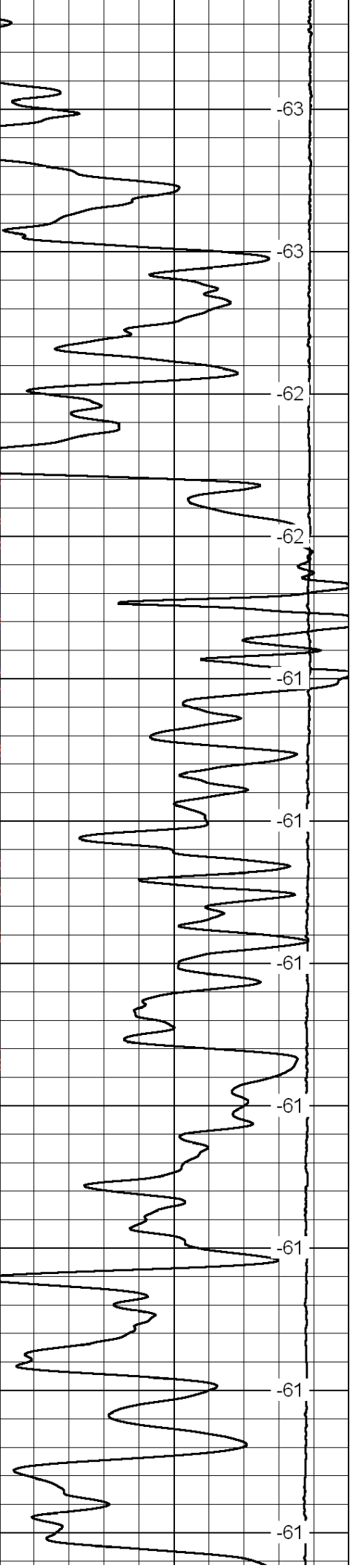
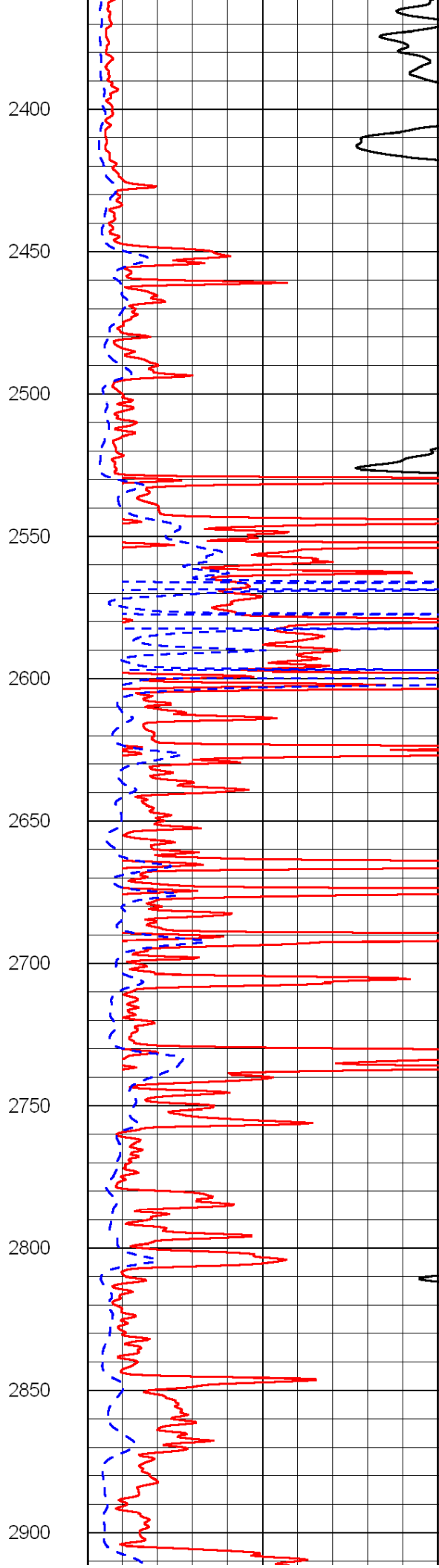
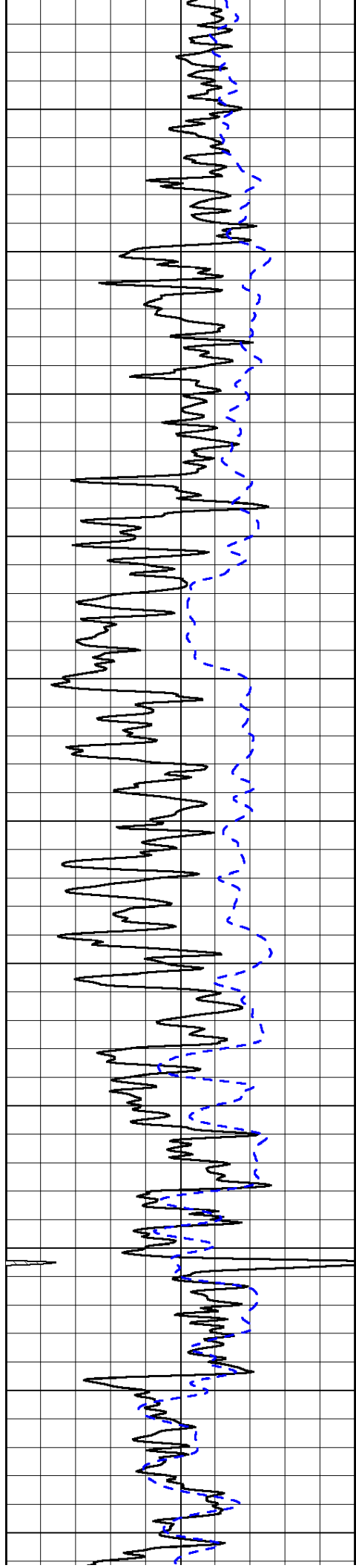
50	Shallow Resistivity	500
50	Deep Resistivity	500

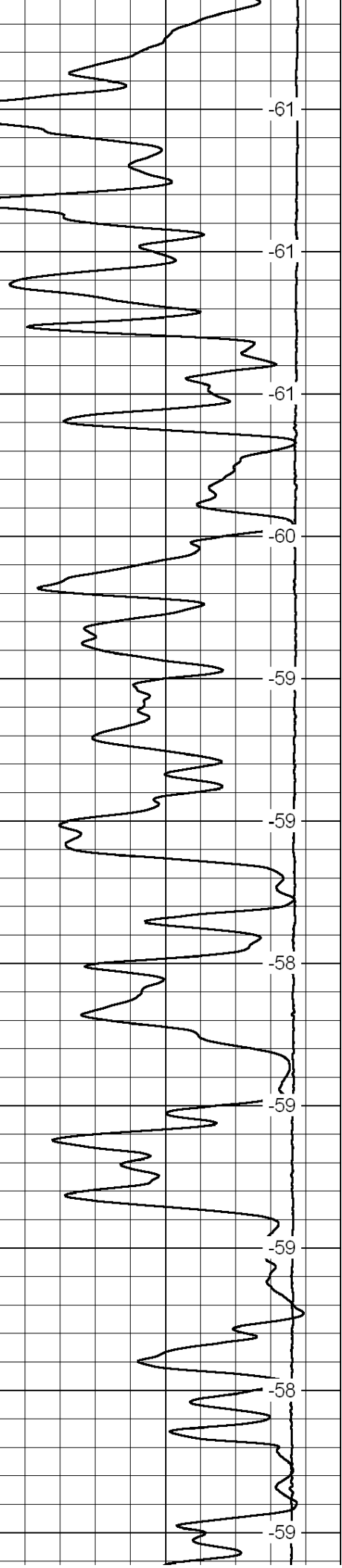
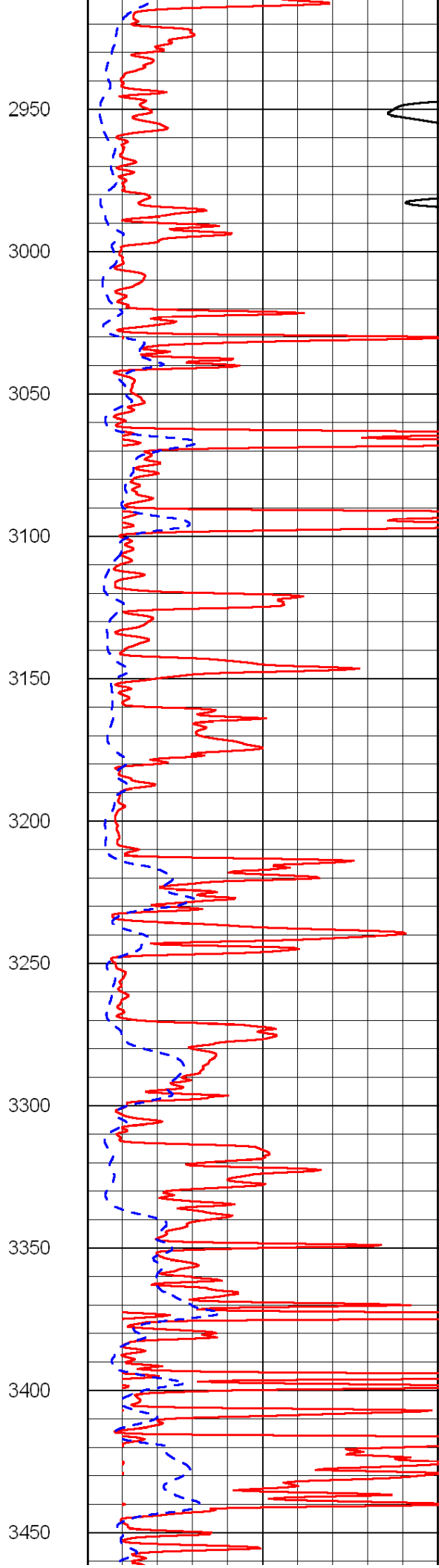
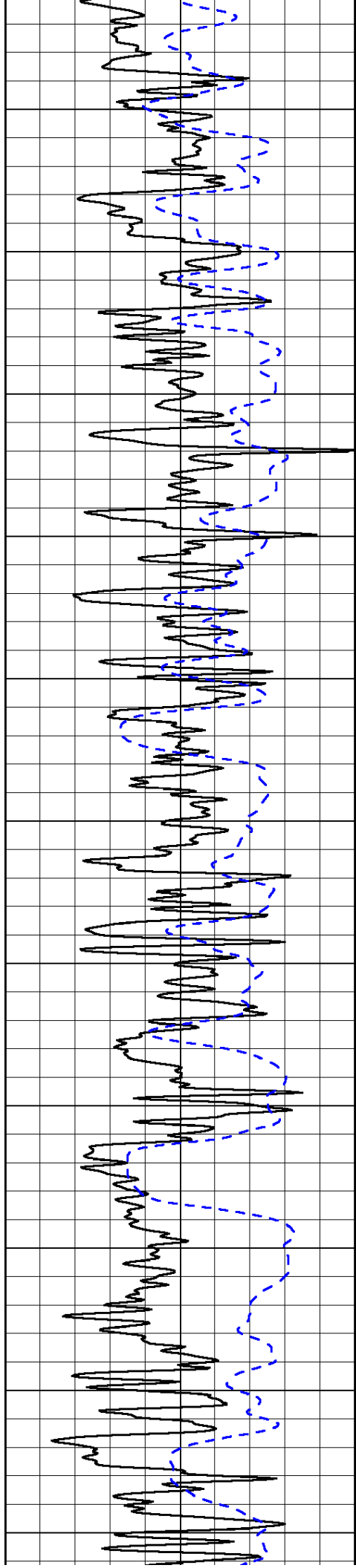


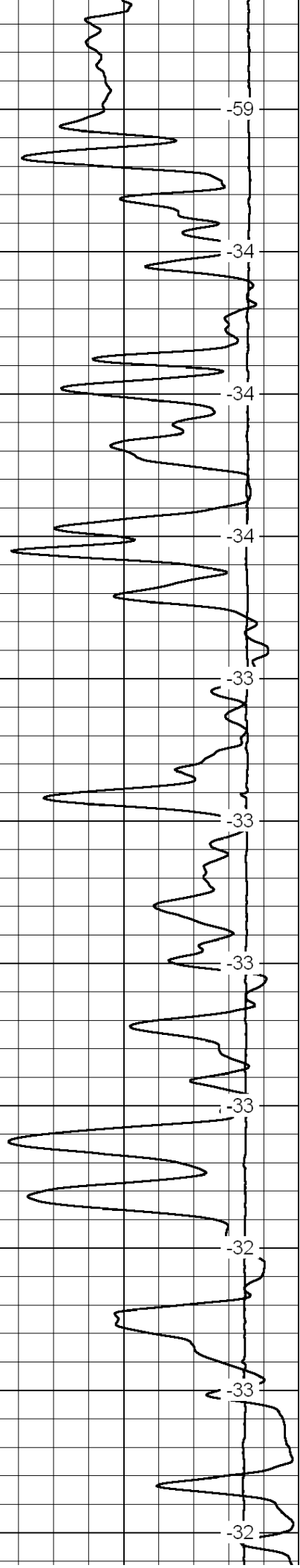
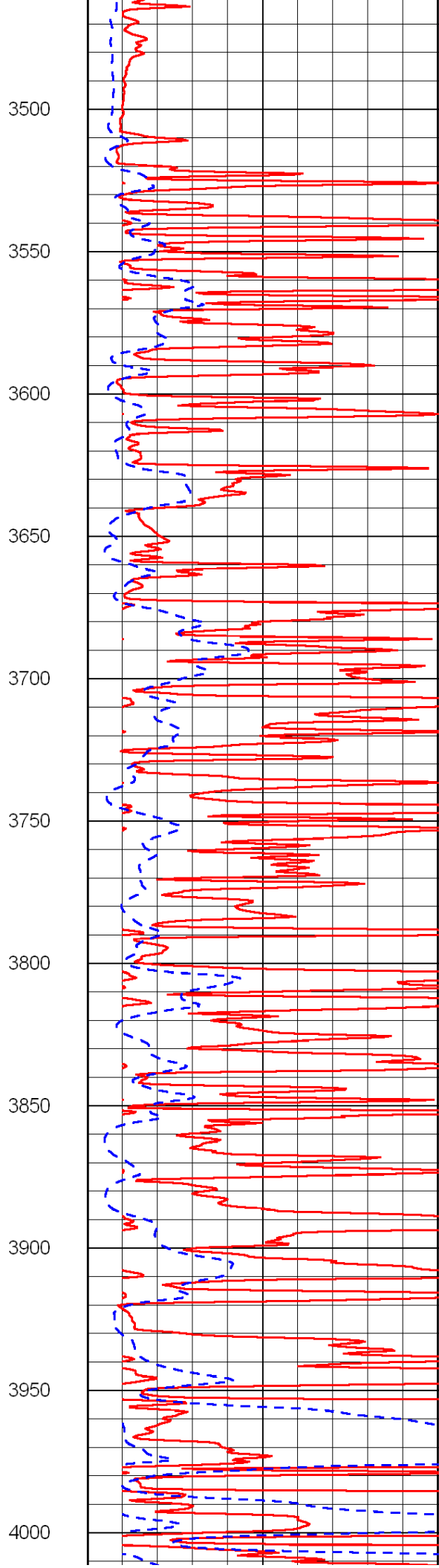
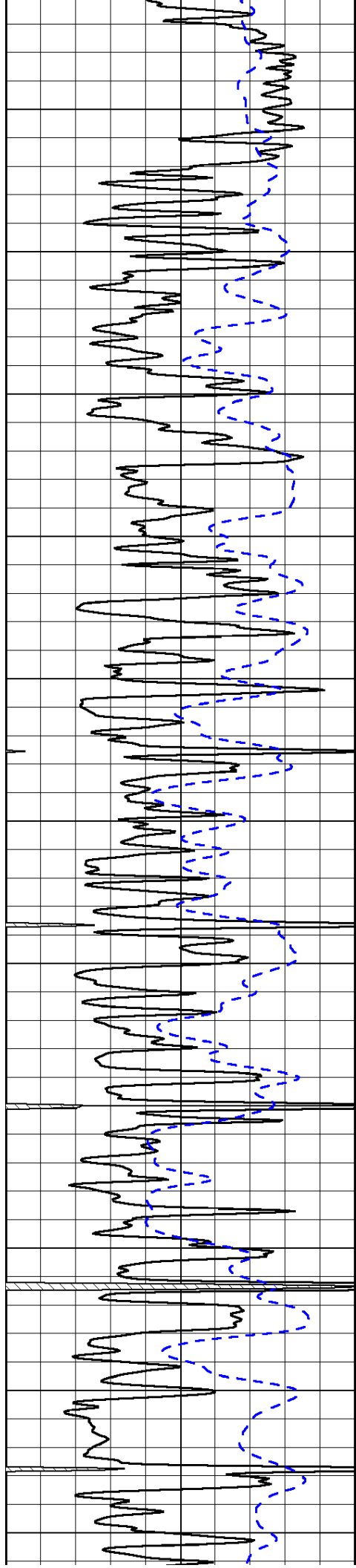


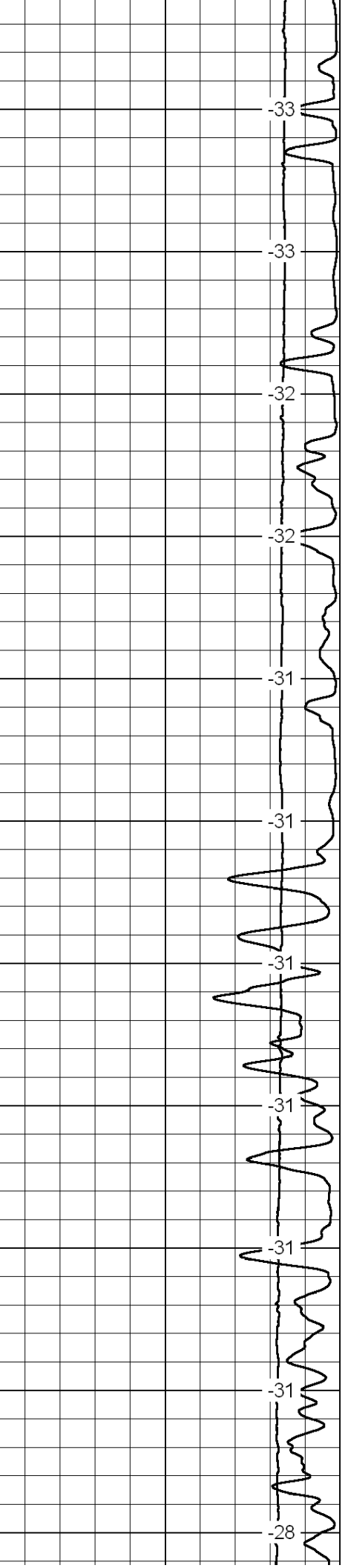
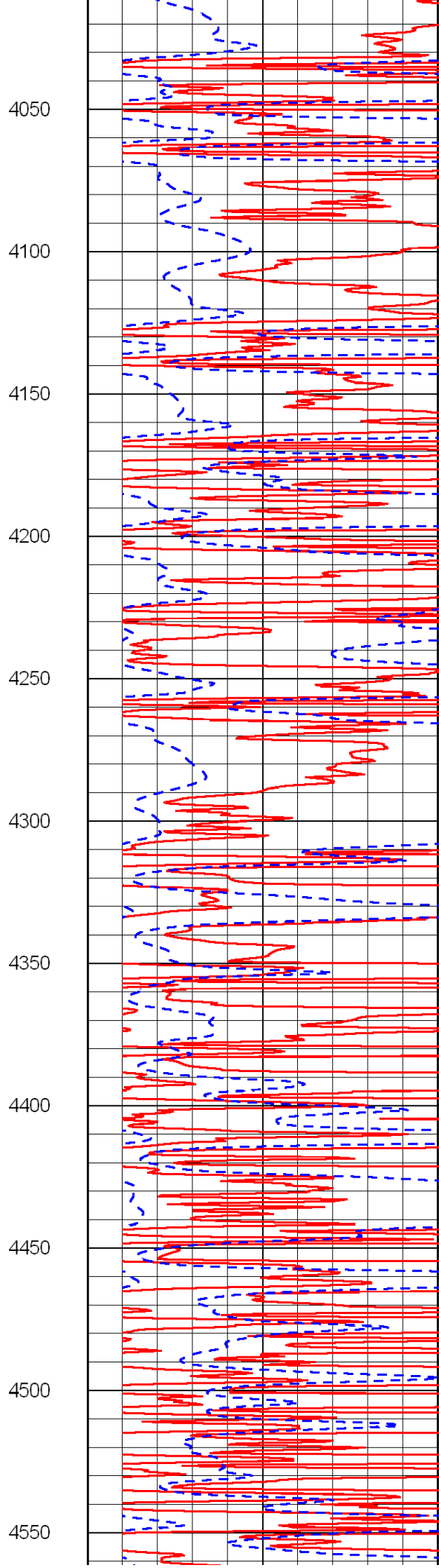
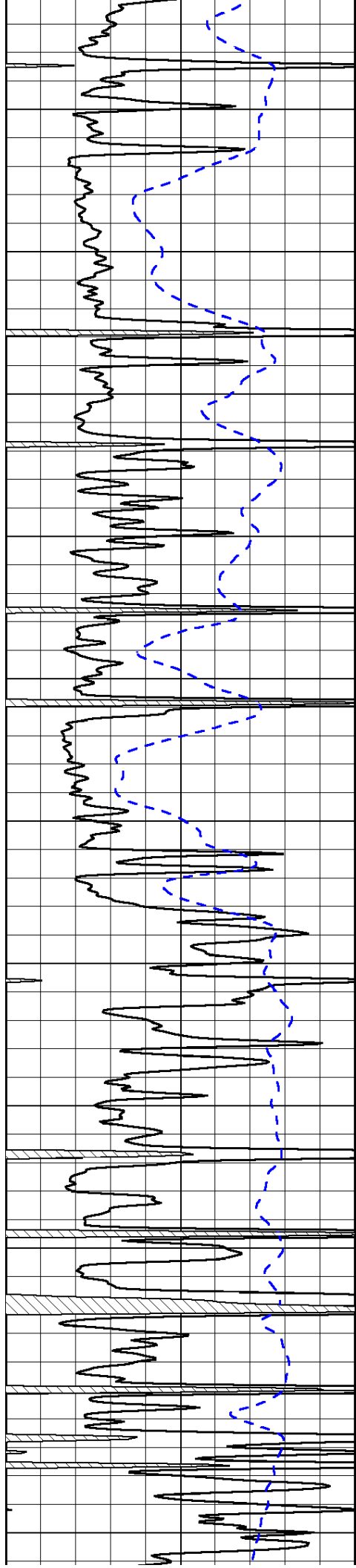


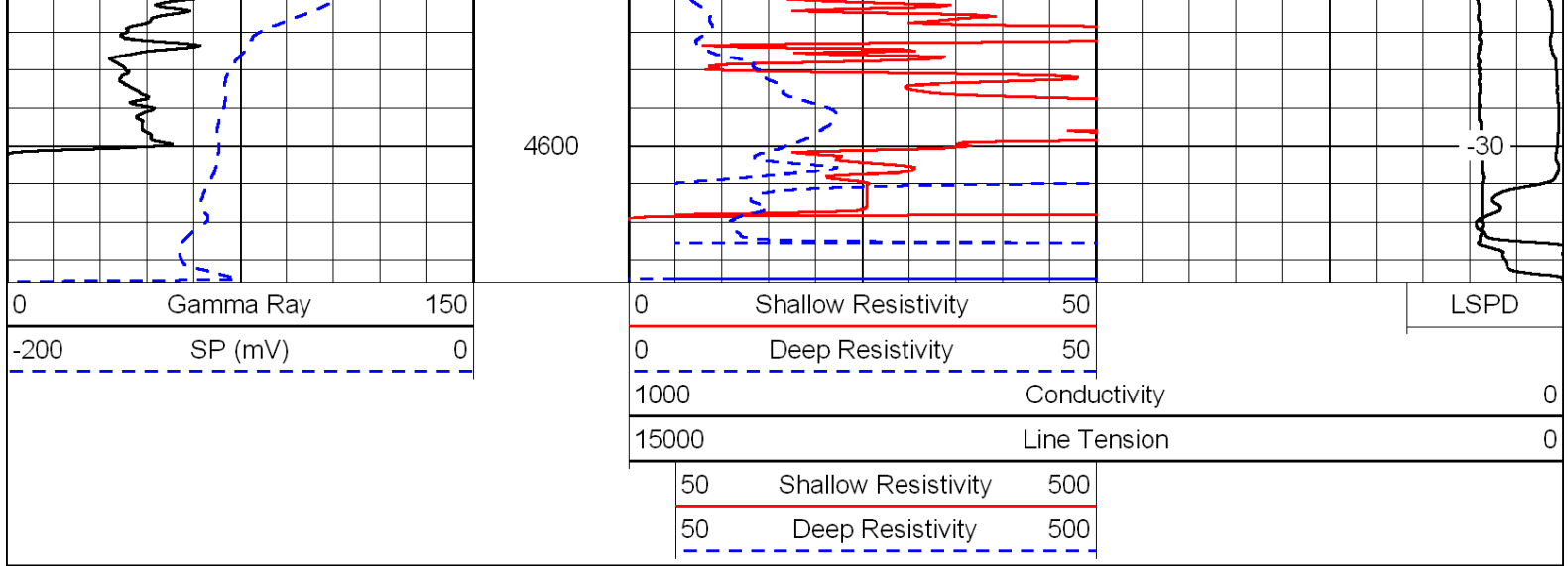




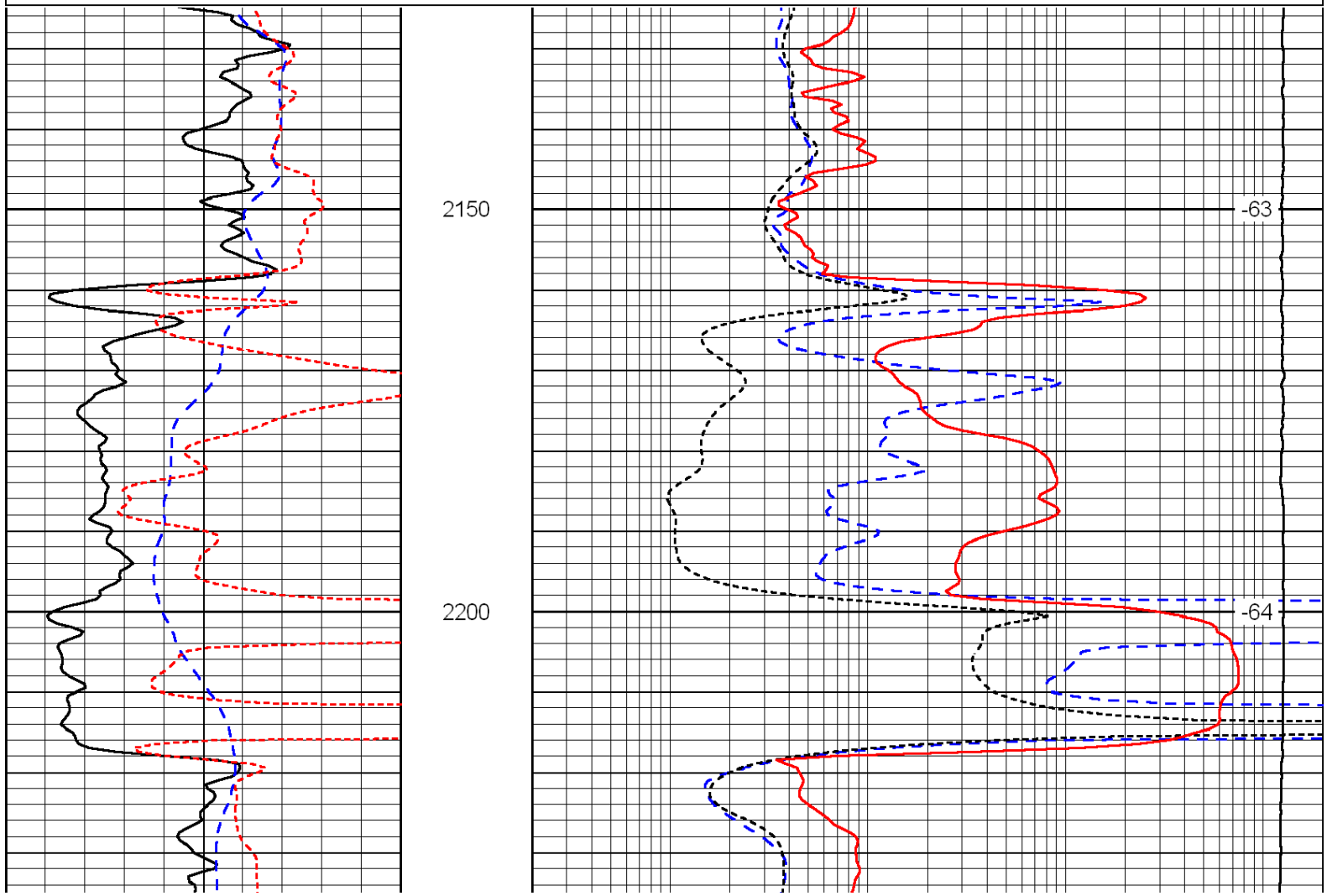
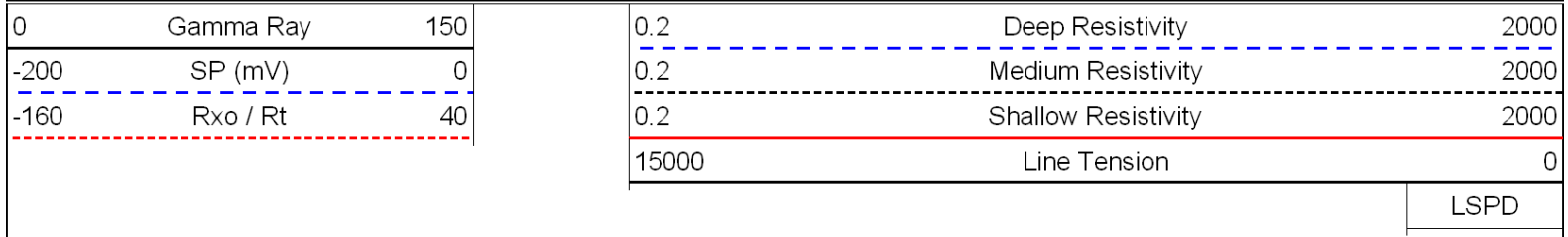


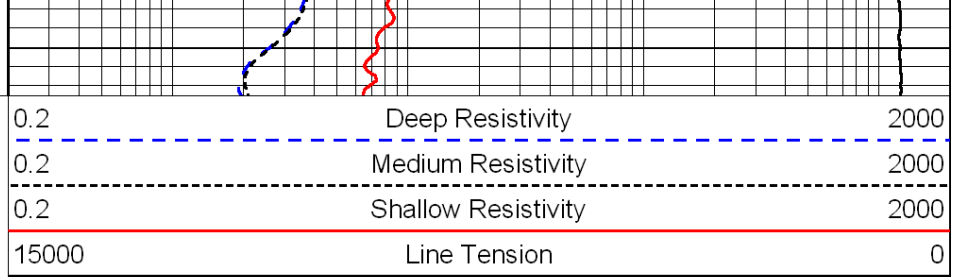
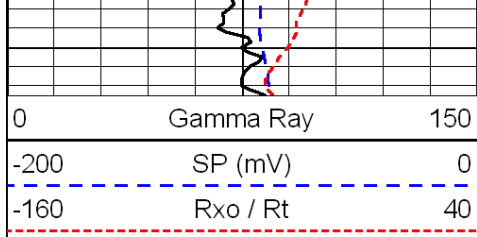






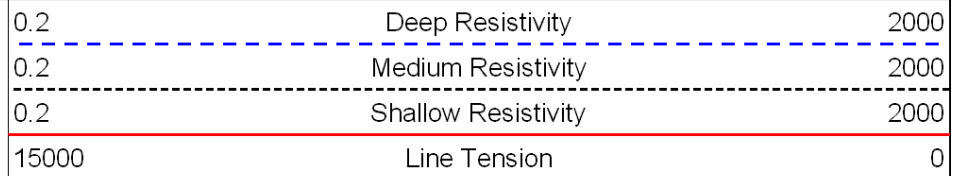
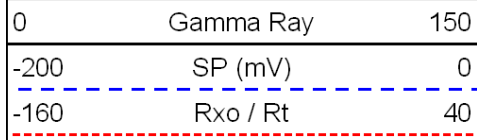
Database File: c:\warrior\data\larson\_marit no. 2-14\larson.db  
 Dataset Pathname: dil\larstk  
 Presentation Format: dil  
 Dataset Creation: Mon Jan 03 02:40:00 2011  
 Charted by: Depth in Feet scaled 1:240



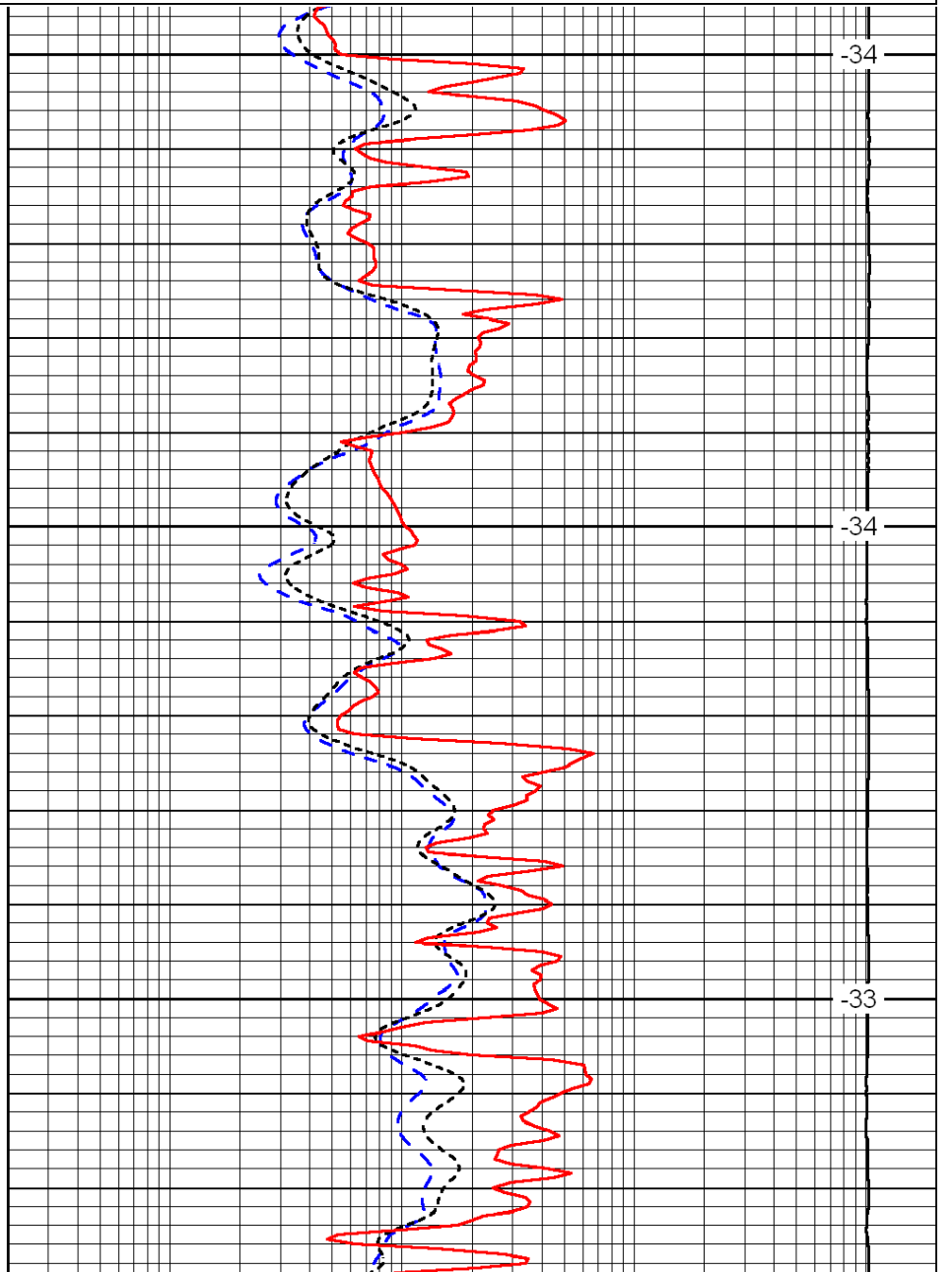
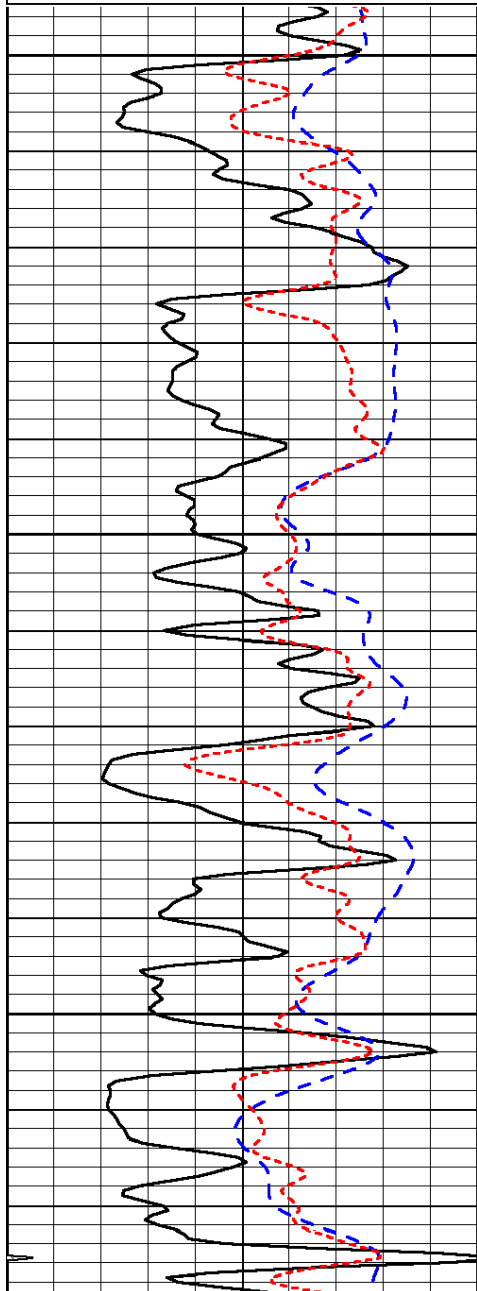


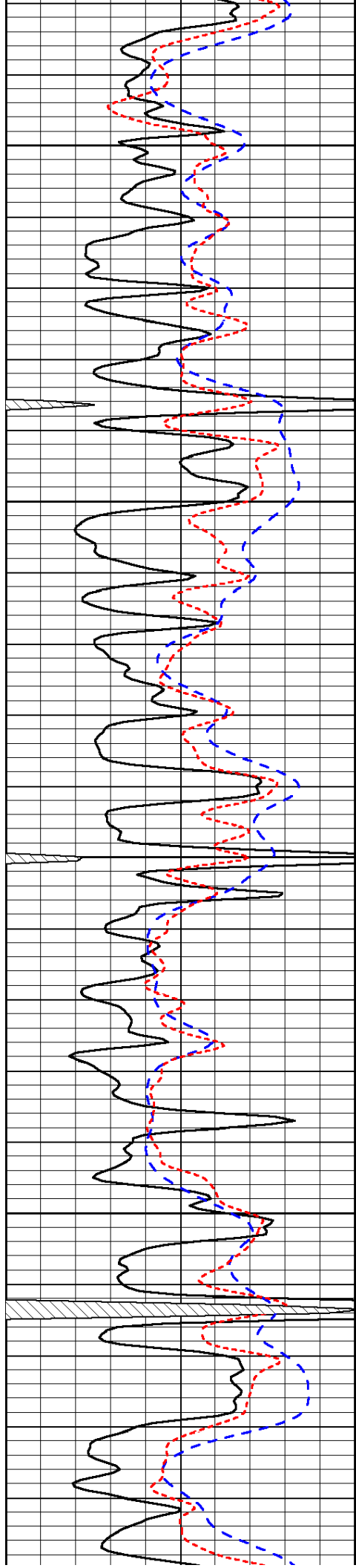
LSPD

Database File: c:\warrior\data\larson\_marit no. 2-14\larson.db  
 Dataset Pathname: dil\larstk  
 Presentation Format: dil  
 Dataset Creation: Mon Jan 03 02:40:00 2011  
 Charted by: Depth in Feet scaled 1:240



LSPD





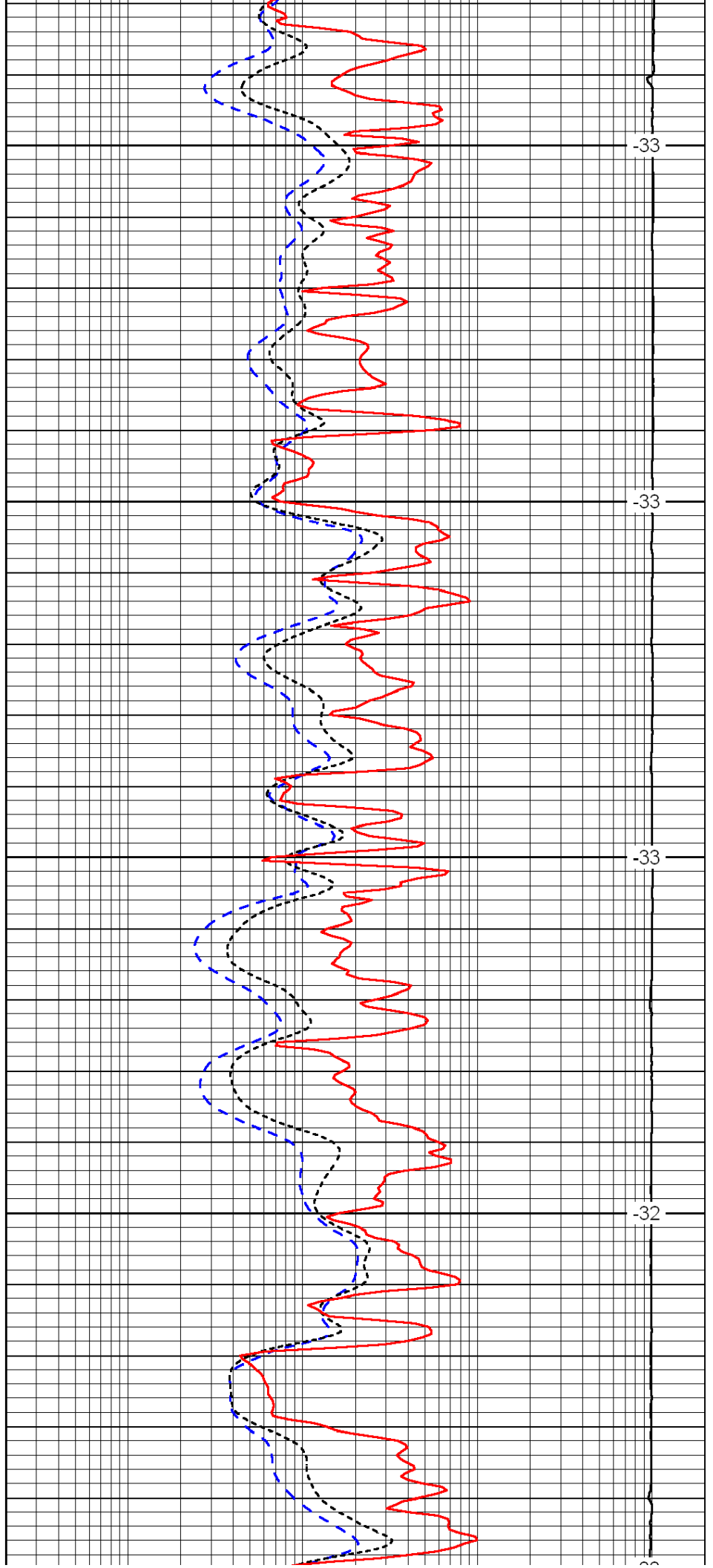
3750

3800

3850

3900

3950



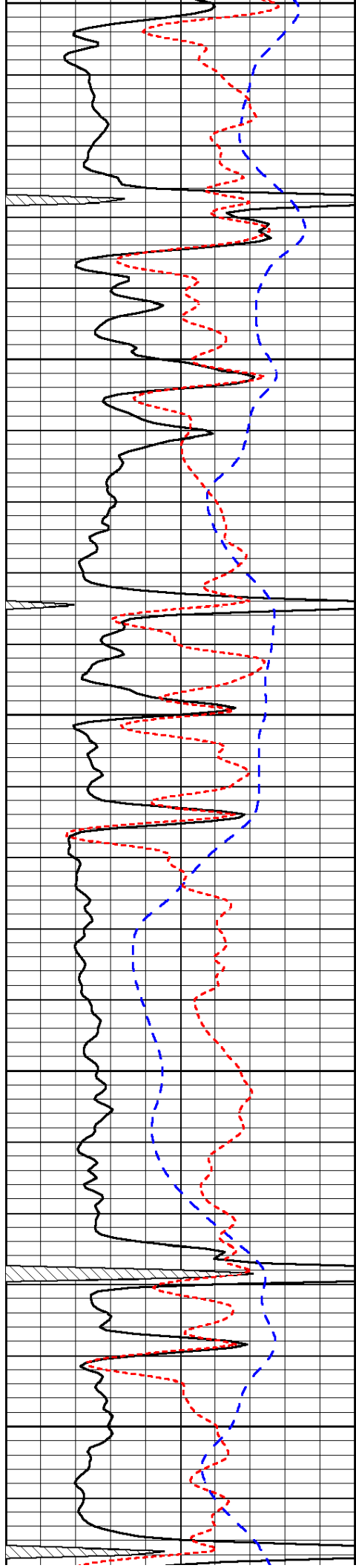
-33

-33

-33

-32

-33



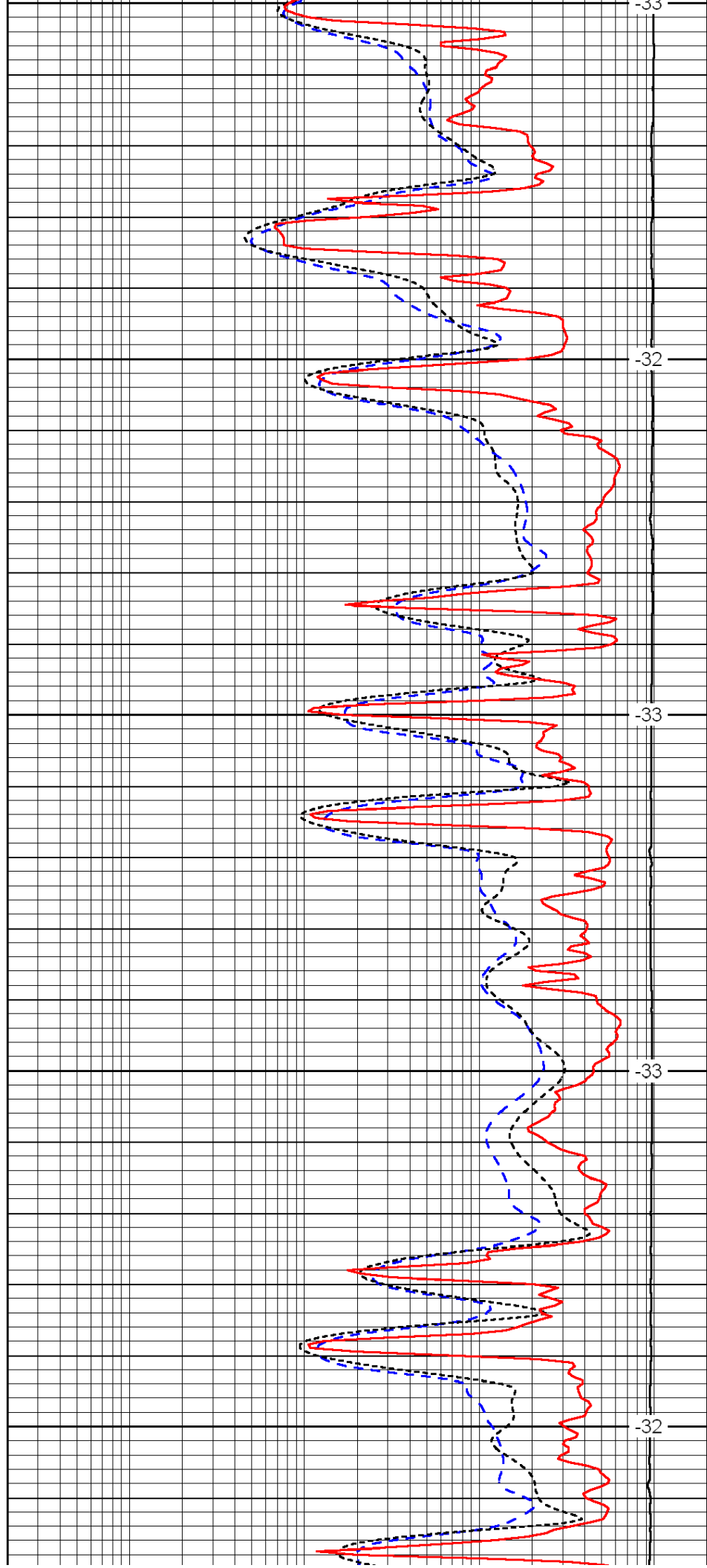
3950

4000

4050

4100

4150



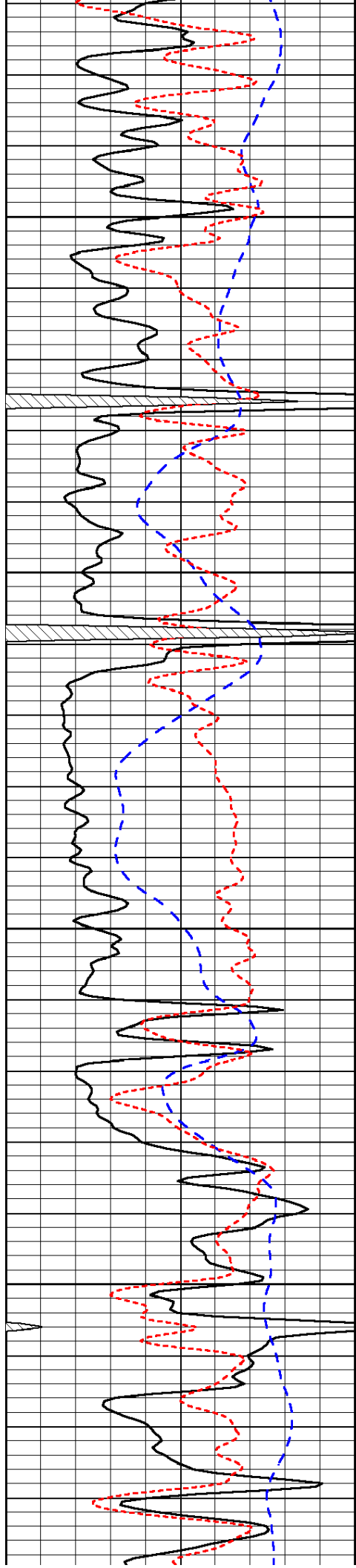
-33

-32

-33

-33

-32

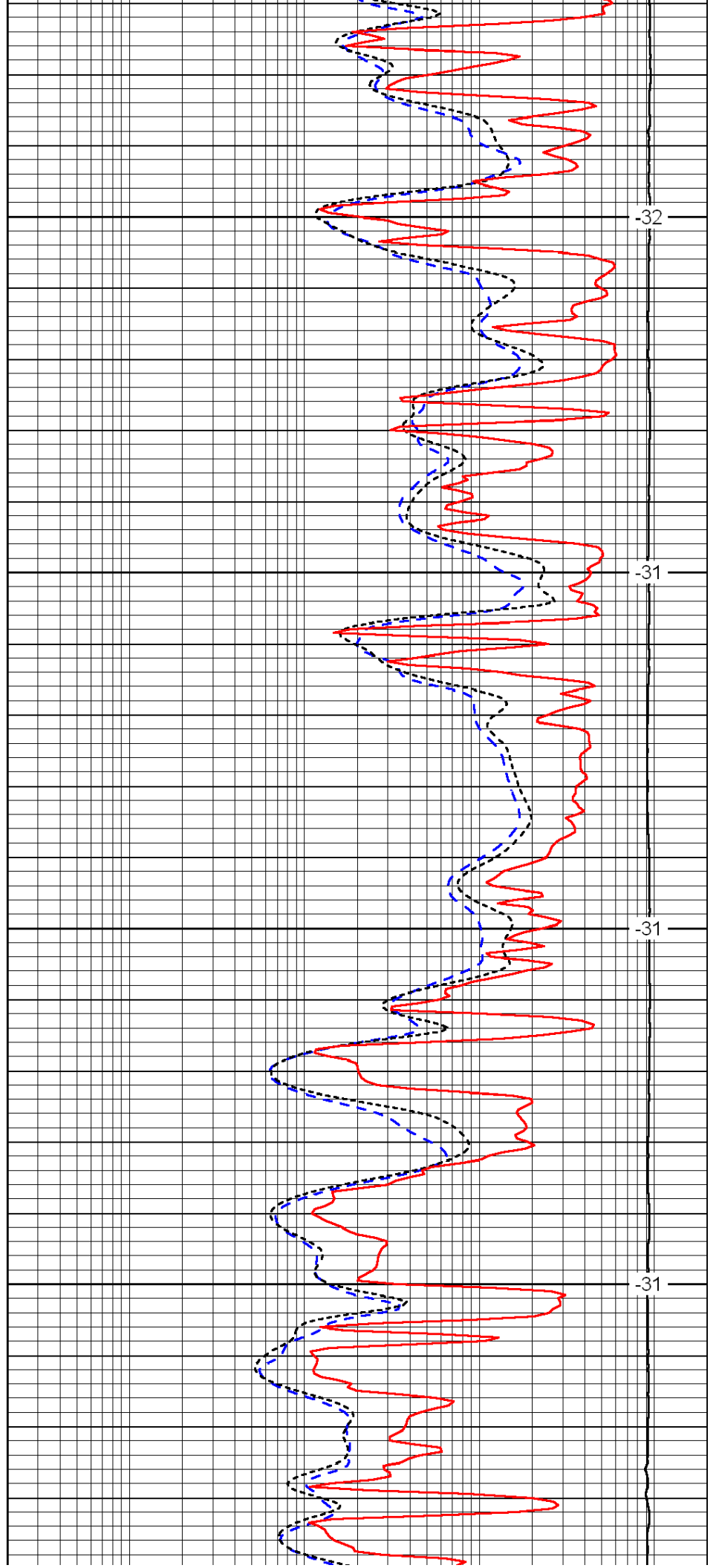


4200

4250

4300

4350

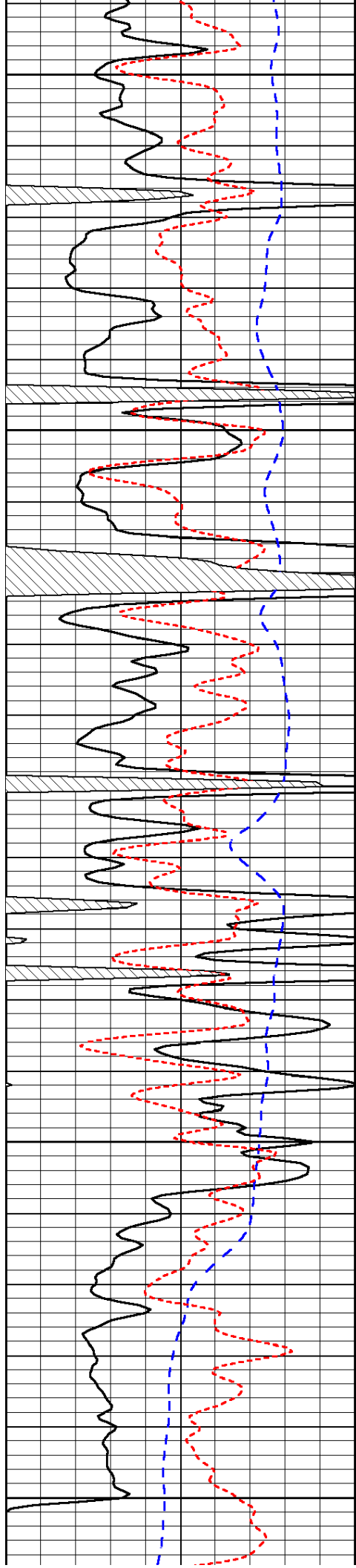


-32

-31

-31

-31



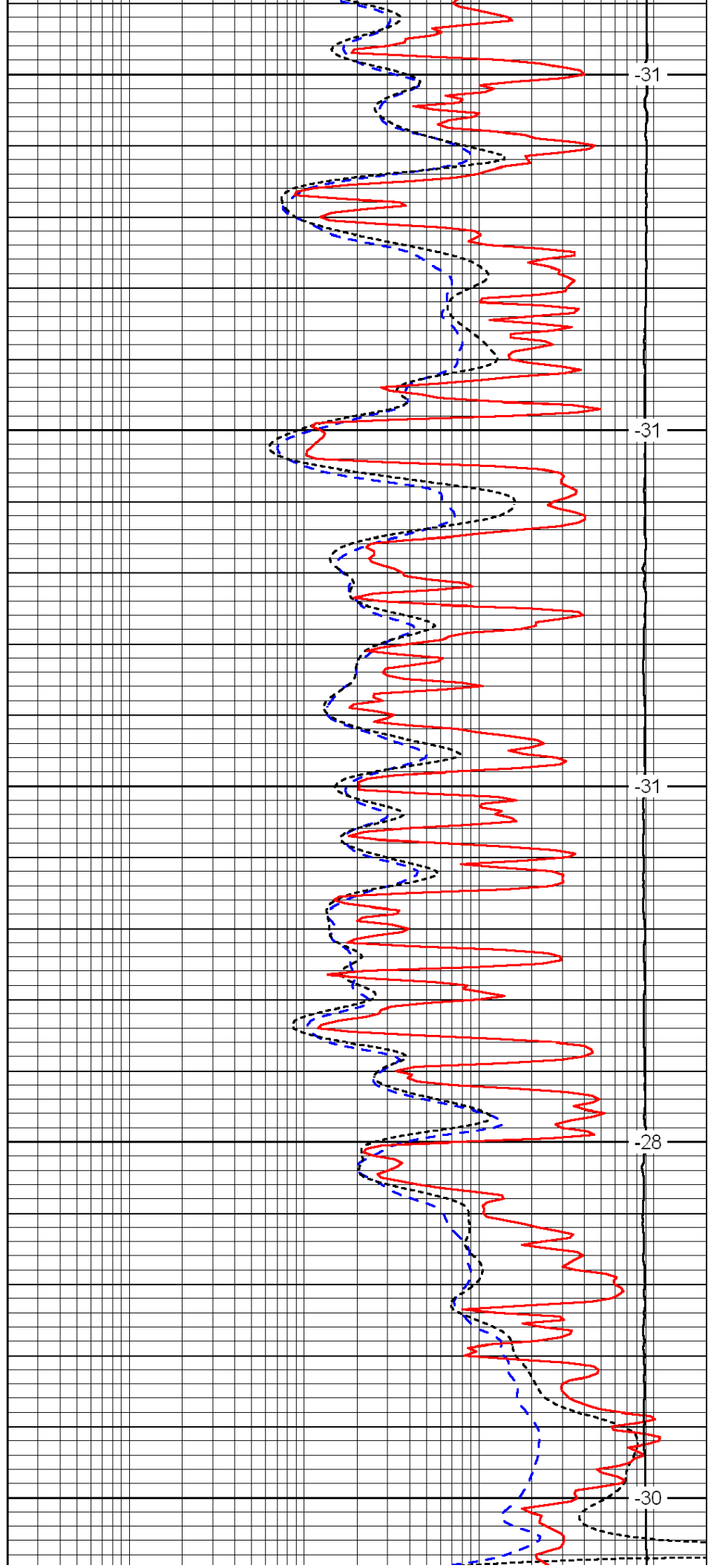
4400

4450

4500

4550

4600



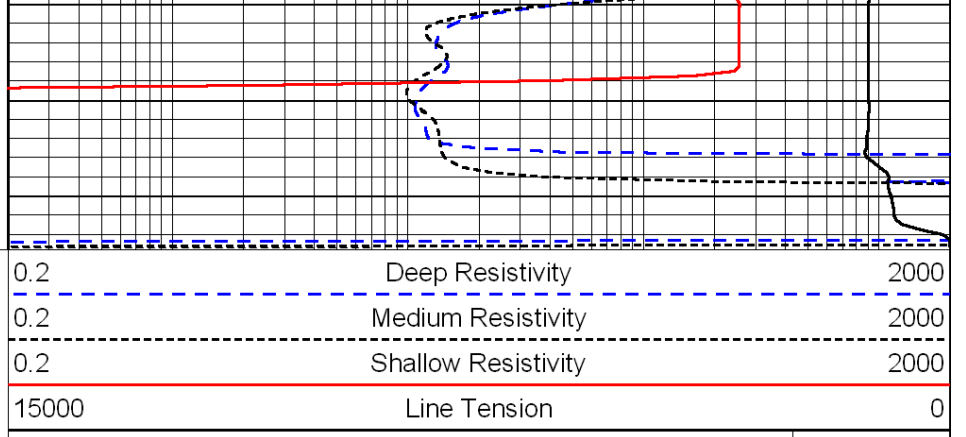
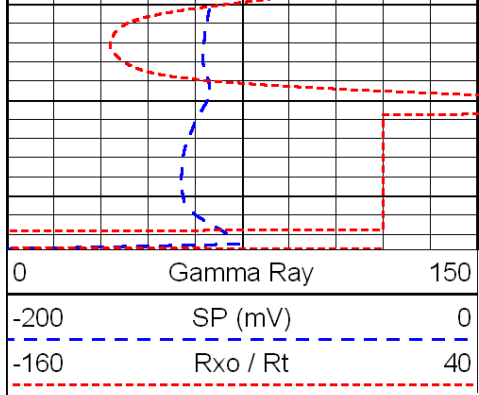
-31

-31

-31

-28

-30



LSPD