



# Microresistivity Log

**DIGITAL LOG (785) 625-3858**

API No. 15-195-22691-00-00	Company <b>Cholla Production, LLC</b>	Well <b>Stithem No. 1-4</b>	Field <b>Diebolt</b>
	County <b>Trego</b>	State <b>Kansas</b>	
	Location <b>S/2 - NE - SE - SE 960' FSL &amp; 330' FEL</b>		Other Services CNL/CDL DIL/BHCS
	Sec: <b>4</b>	Twp: <b>11 S</b>	Rge: <b>23 W</b>
Permanent Datum Log Measured From Drilling Measured From	Ground Level Kelly Bushing Kelly Bushing	Elevation 2286 5 Ft. Above Perm. Datum	K.B. 2291 D.F. G.L. 2286

Date	12/15/2010
Run Number	Two
Depth Driller	4210
Depth Logger	4215
Bottom Logged Interval	4214
Top Log Interval	3400
Casing Driller	8.625 @ 261
Casing Logger	261
Bit Size	7.875
Type Fluid in Hole	Chemical
Salinity, ppm CL	2.500
Density / Viscosity	9.2   52
pH / Fluid Loss	10.0   8.0
Source of Sample	Flowline
Rm @ Meas. Temp	1.80 @ 60
Rmf @ Meas. Temp	1.35 @ 60
Rmc @ Meas. Temp	2.43 @ 60
Source of Rmf / Rmc	Charts
Rm @ BHT	0.91 @ 118
Operating Rig Time	4 1/2 Hours
Max Rec. Temp. F	118
Equipment Number	15
Location	Hays
Recorded By	B. Becker
Witnessed By	Bill Goff

<<< Fold Here >>>

All interpretations are opinions based on inferences from electrical or other measurements and we cannot and do not guarantee the accuracy or correctness of any interpretation, and we shall not, except in the case of gross or willful negligence on our part, be liable or responsible for any loss, costs, damages, or expenses incurred or sustained by anyone resulting from any interpretation made by any of our officers, agents or employees. These interpretations are also subject to our general terms and conditions set out in our current Price Schedule.

**Comments**

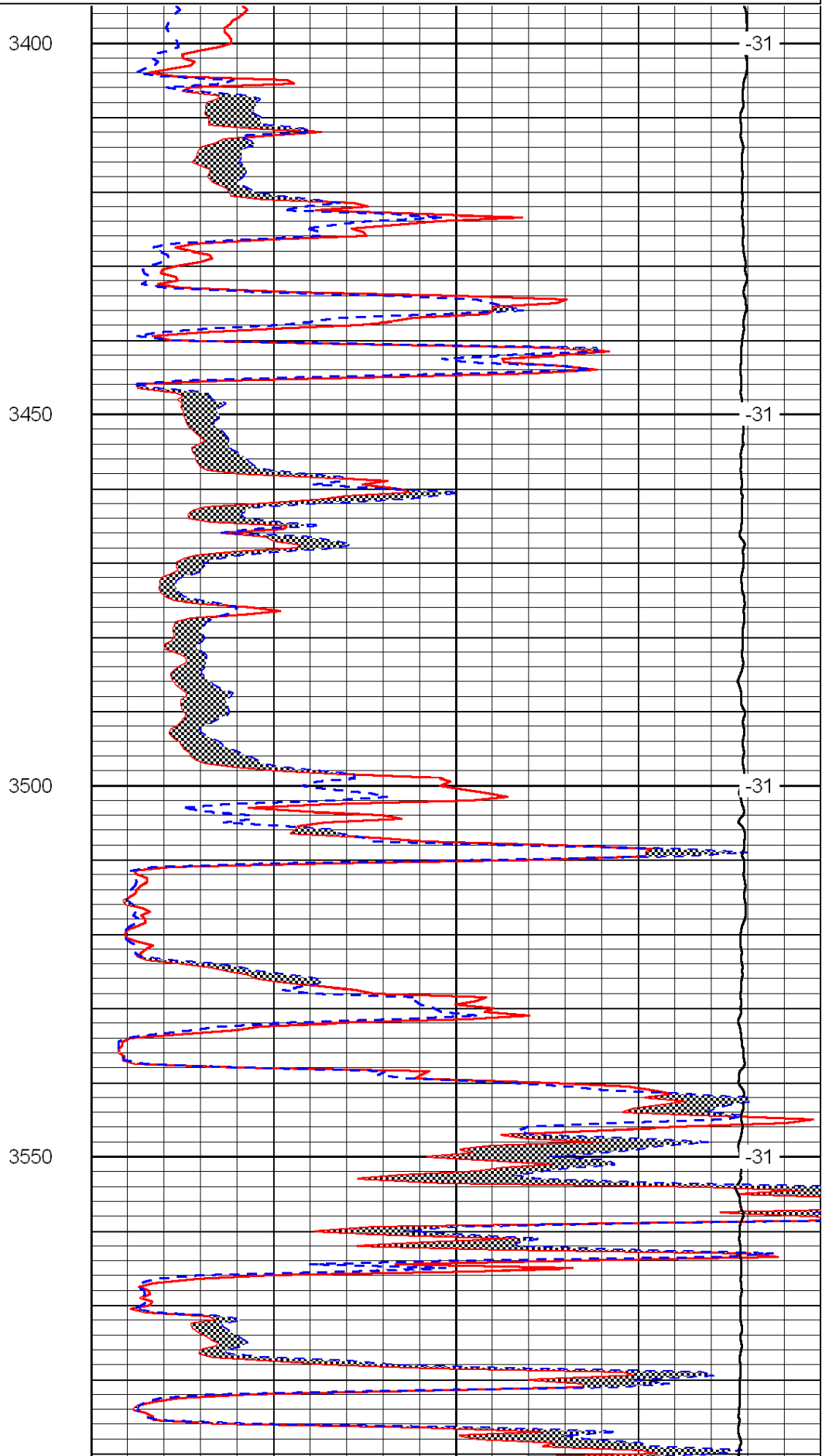
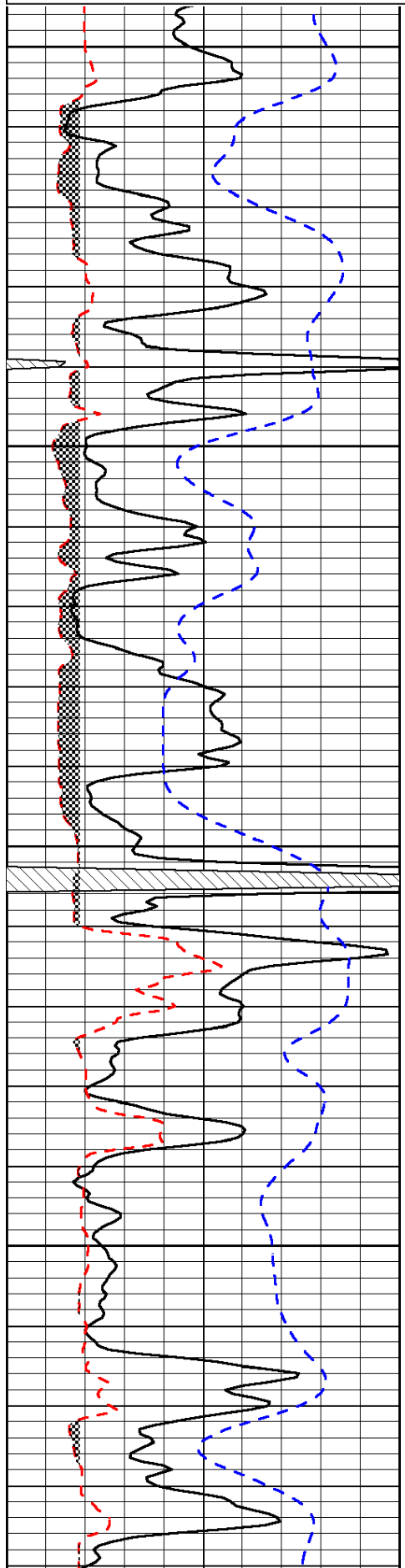
Thank you for using Log-Tech, Inc.  
(785) 625-3858  
  
Wakeeney, Ks;  
7 North to Saline River Rd;  
West and North into

Database File: c:\warrior\data\cholla\_stithem no. 1-4\cholla hd.db  
 Dataset Pathname: DIL\chostk2  
 Presentation Format: micro  
 Dataset Creation: Wed Dec 15 23:31:13 2010  
 Charted by: Depth in Feet scaled 1:240

0	Gamma Ray	150
6	Micro Log Caliper (GAPI)	16
-200	SP (mV)	0

0	Micro Inverse 1 X 1	40
0	Micro Normal 2"	40
15000	Line Weight	0

LSPD



3400

3450

3500

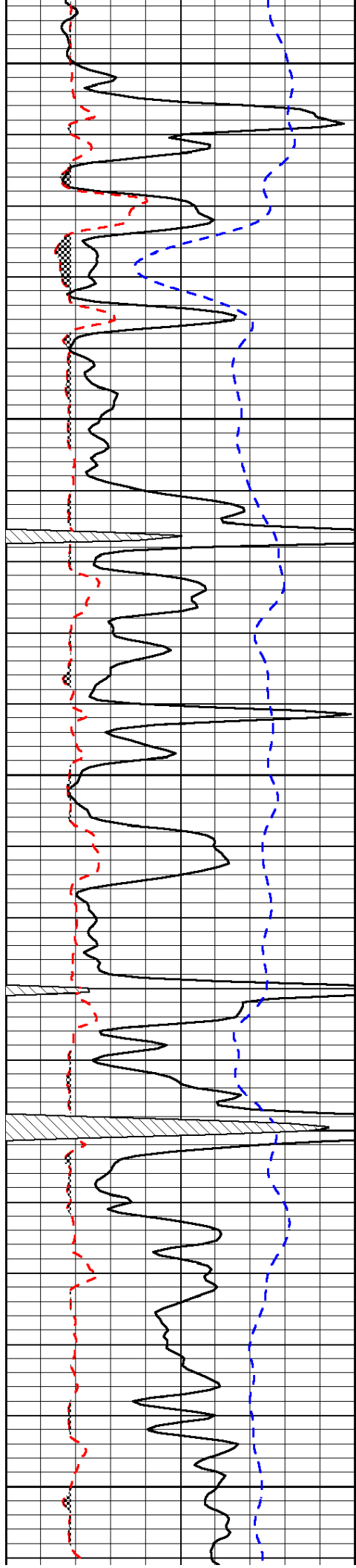
3550

-31

-31

-31

-31



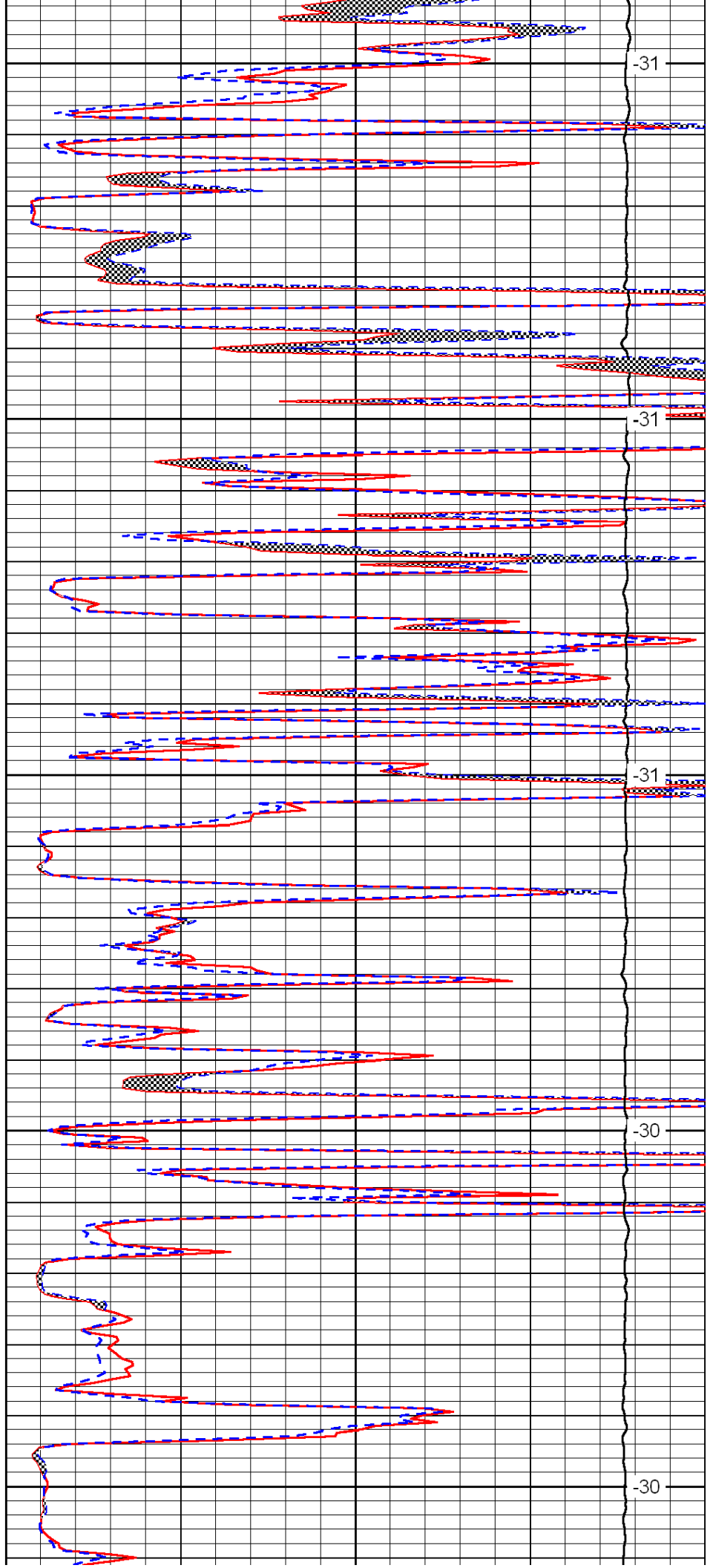
3600

3650

3700

3750

3800



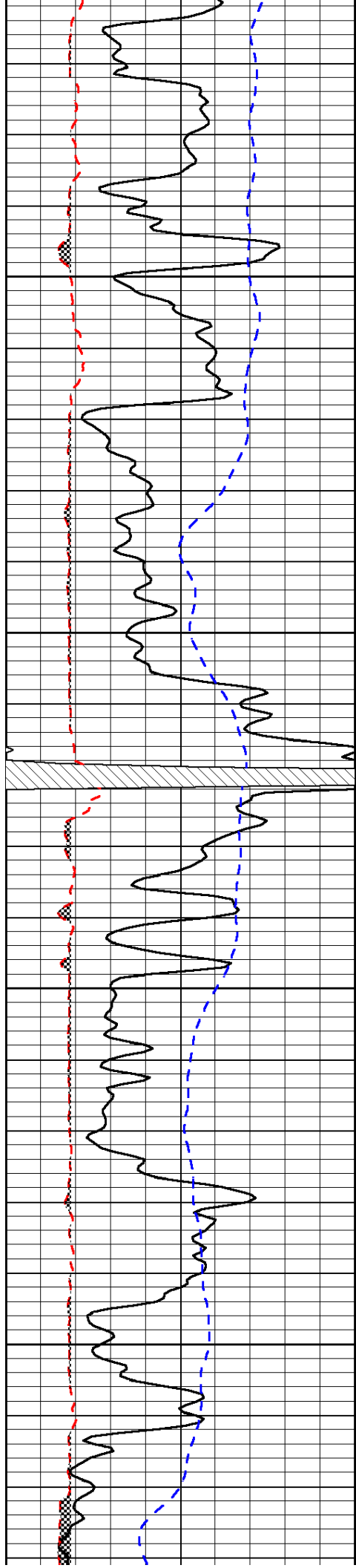
-31

-31

-31

-30

-30

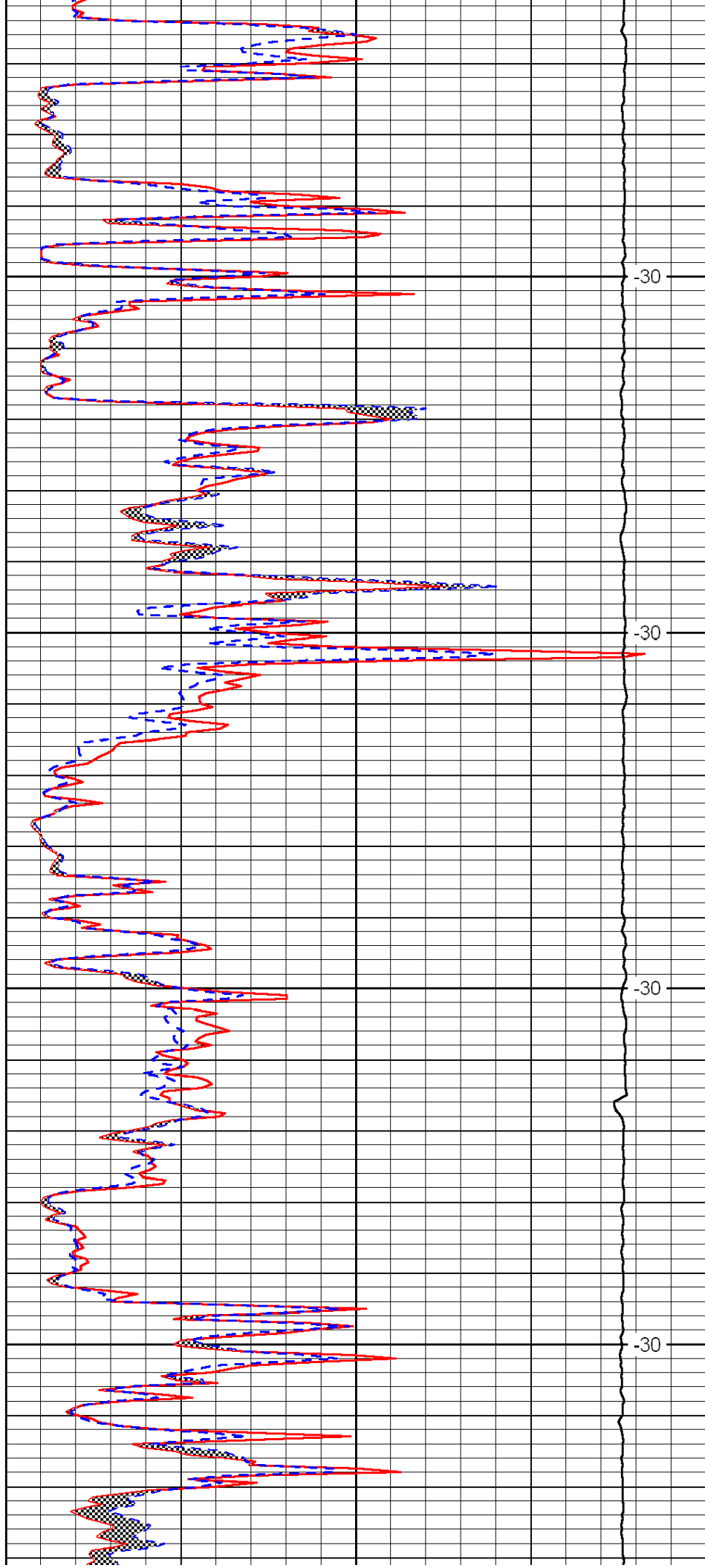


3850

3900

3950

4000

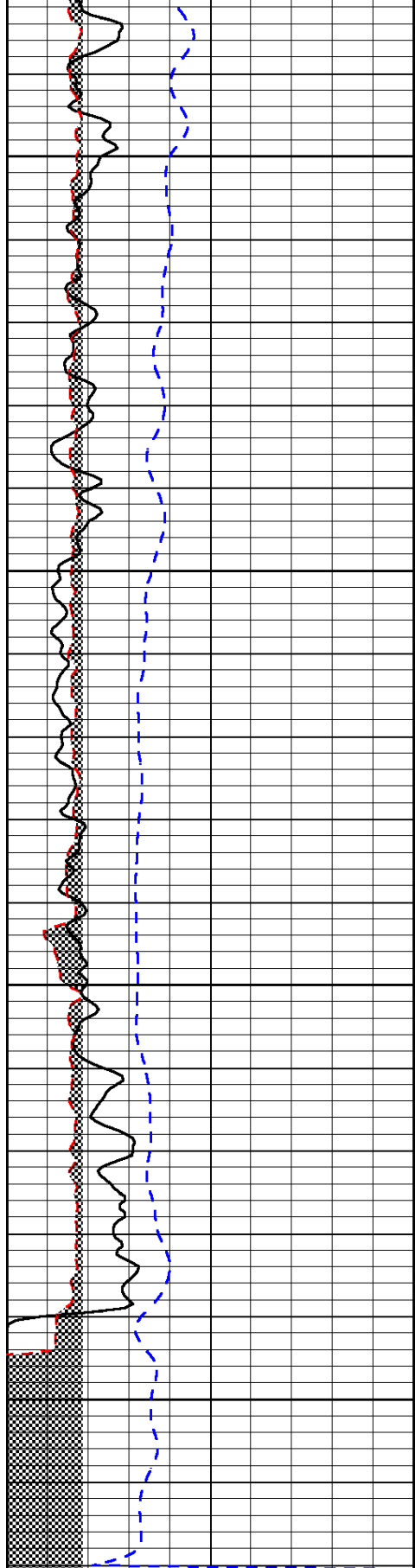


-30

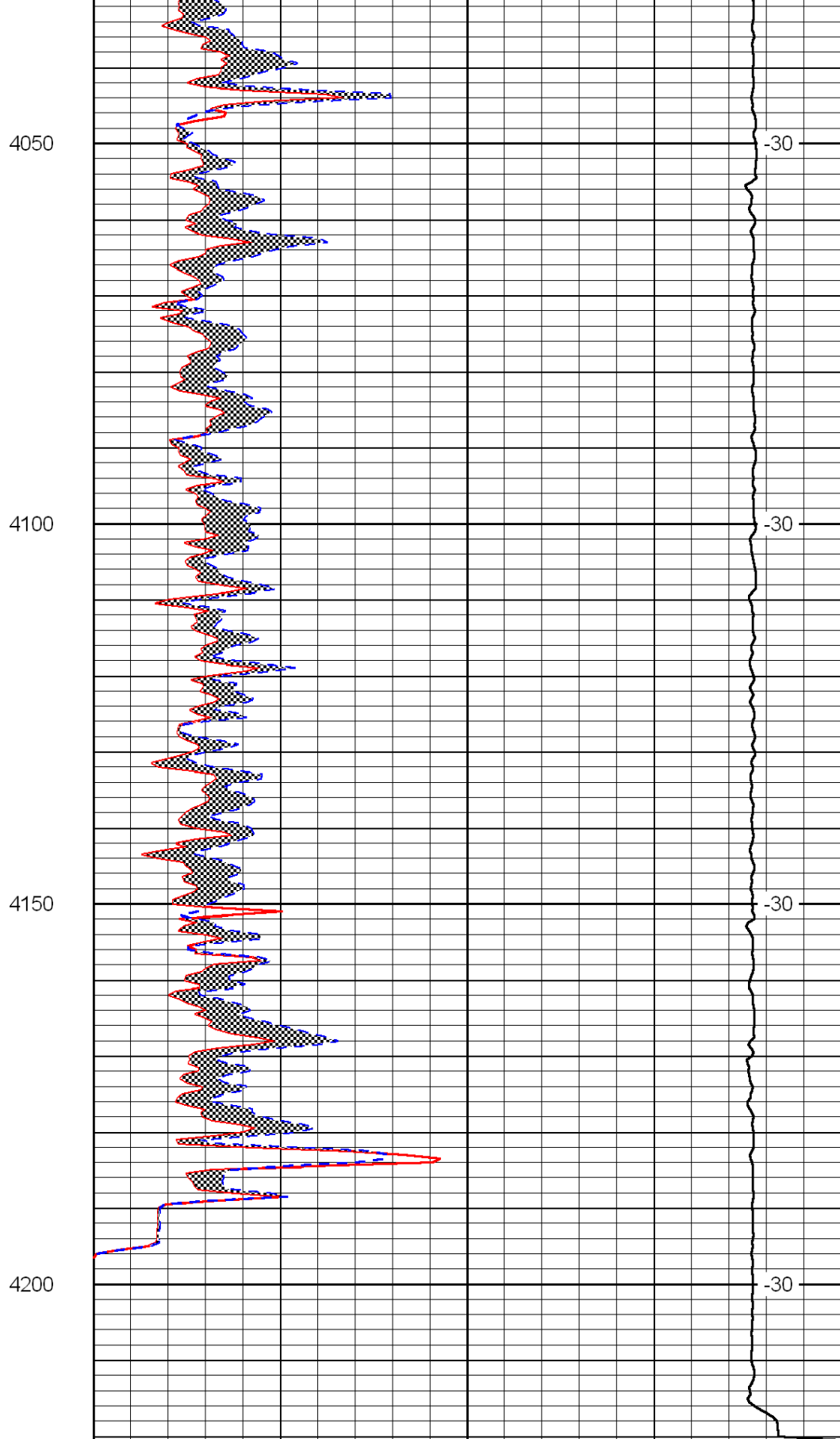
-30

-30

-30



0	Gamma Ray	150
6	Micro Log Caliper (GAPI)	16
-200	SP (mV)	0



0	Micro Inverse 1 X 1	40
0	Micro Normal 2''	40
15000	Line Weight	0

LSPD