



**Borehole Compensated  
Sonic Log**

**DIGITAL LOG (785) 625-3858**

API No.	15-195-22691-00-00
Company	<b>Cholla Production, LLC</b>
Well	<b>Stithem No. 1-4</b>
Field	<b>Diebolt</b>
County	<b>Trego</b>
State	<b>Kansas</b>
Location	S/2 - NE - SE - SE 960' FSL & 330' FEL
Sec: 4	Twp: 11 S Rge: 23 W
Other Services	CNL/CDL MEL/DIL
Elevation	2291

Permanent Datum	Ground Level	Elevation 2286
Log Measured From	Kelly Bushing	5 Ft. Above Perm. Datum
Drilling Measured From	Kelly Bushing	
Date	12/15/2010	K.B. 2291 D.F. G.L. 2286

Run Number	Two
Type Log	BHC Sonic
Depth Driller	4210
Depth Logger	4215
Bottom Logged Interval	4204
Top Logged Interval	250
Type Fluid In Hole	Chemical
Salinity, PPM CL	2,500
Density	9.2
Level	Full
Max. Rec. Temp. F	118
Operating Rig Time	4 1/2 Hours
Equipment -- Location	15 Hays
Recorded By	B. Becker
Witnessed By	Bill Goff

Borehole Record				Casing Record			
Run No.	Bit	From	To	Size	Wgt.	From	To
1	12.25	00	261	8.625	24#	00	261
2	7.875	261	4210				

<<< Fold Here >>>

All interpretations are opinions based on inferences from electrical or other measurements and we cannot and do not guarantee the accuracy or correctness of any interpretation, and we shall not, except in the case of gross or willful negligence on our part, be liable or responsible for any loss, costs, damages, or expenses incurred or sustained by anyone resulting from any interpretation made by any of our officers, agents or employees. These interpretations are also subject to our general terms and conditions set out in our current Price Schedule.

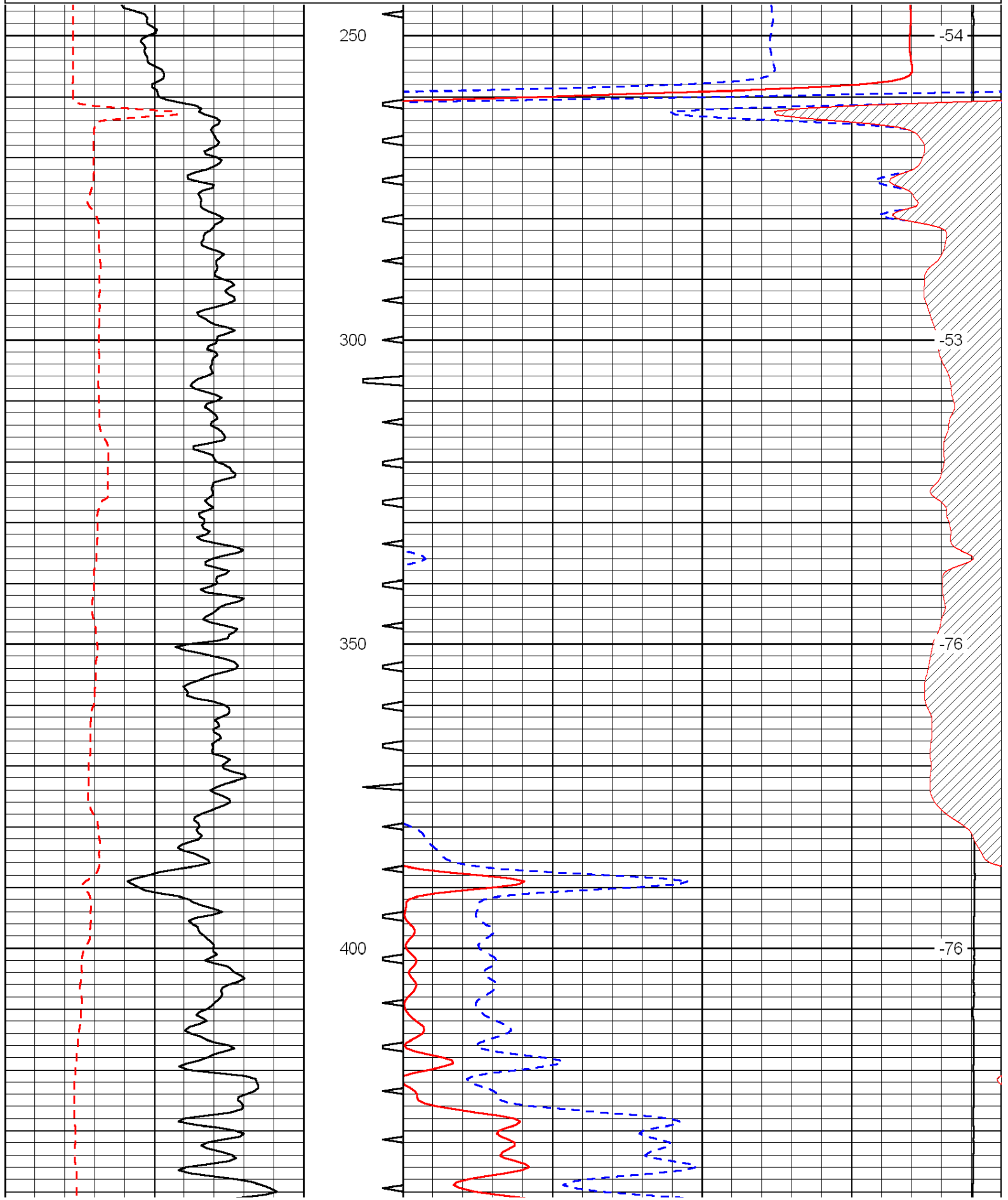
**Comments**

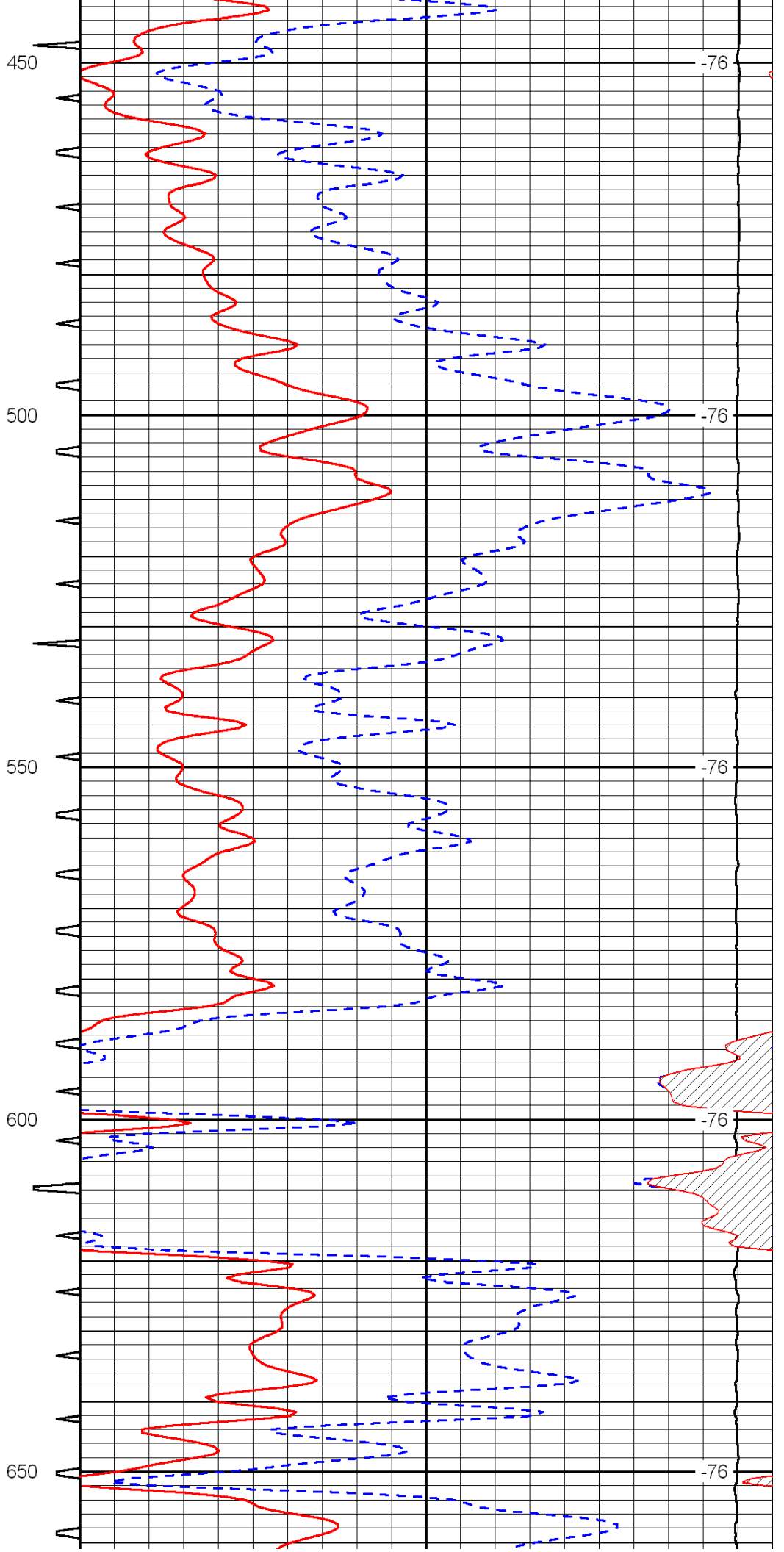
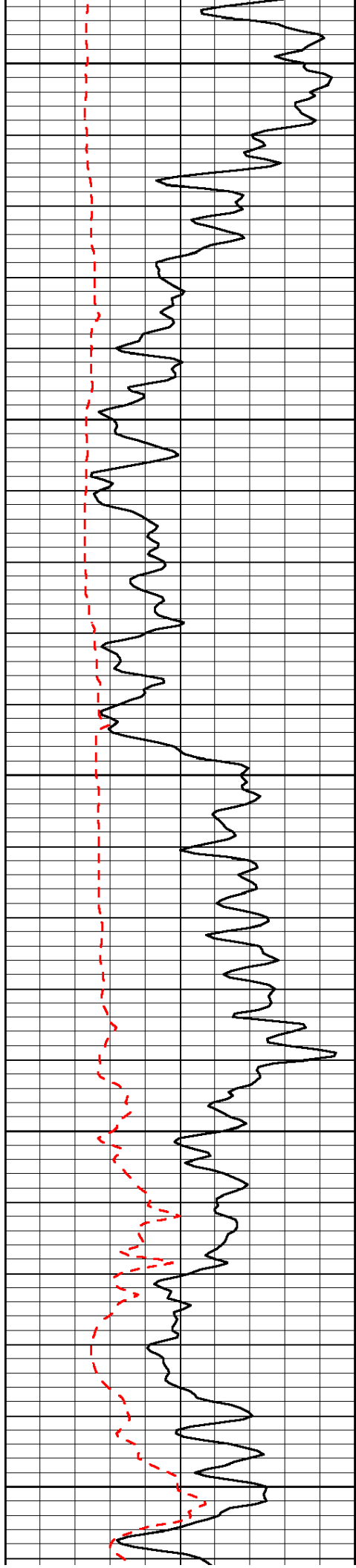
Thank you for using Log-Tech, Inc.  
 (785) 625-3858  
  
 Wakeeney, Ks;  
 7 North to Saline River Rd;  
 West and North into

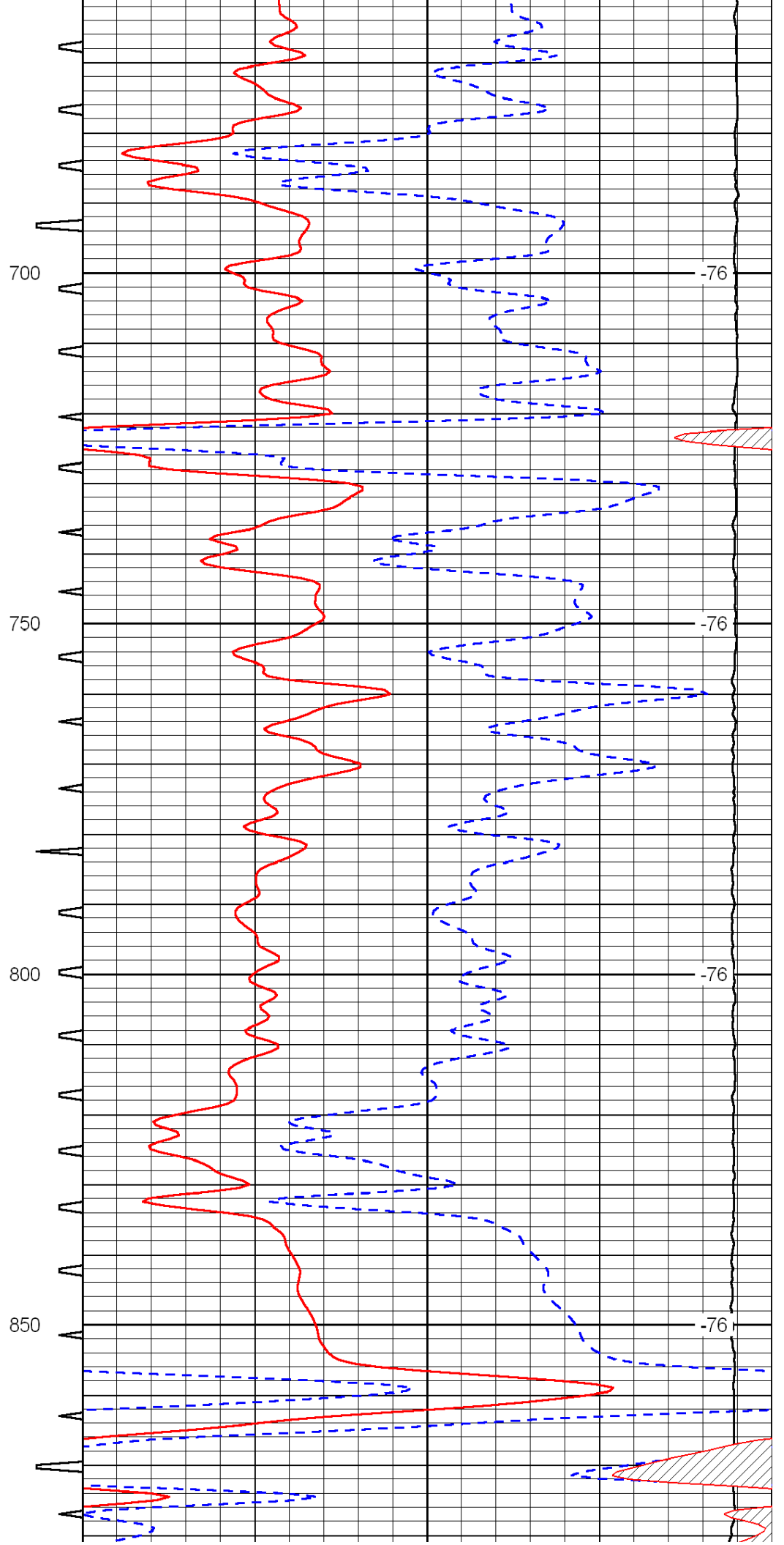
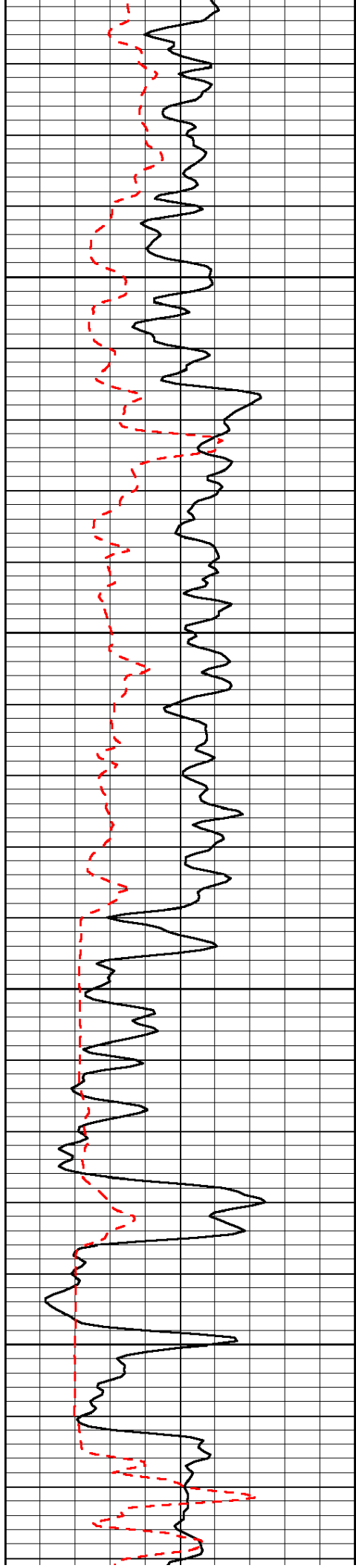
Database File: c:\warrior\data\cholla\_stithem no. 1-4\cholla hd.db  
 Dataset Pathname: DIL\chostk2  
 Presentation Format: sonic  
 Dataset Creation: Wed Dec 15 23:31:13 2010  
 Charted by: Depth in Feet scaled 1:240

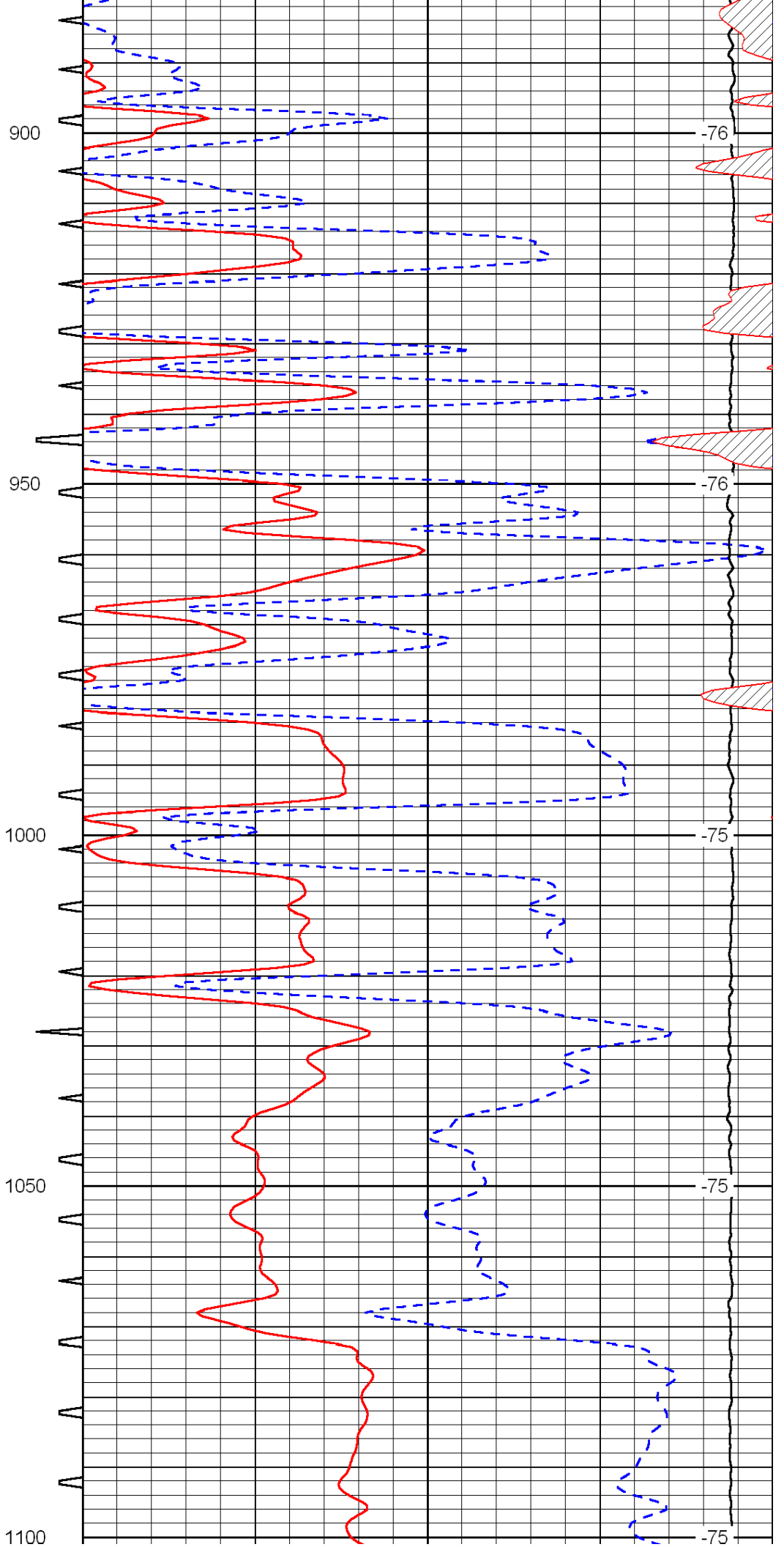
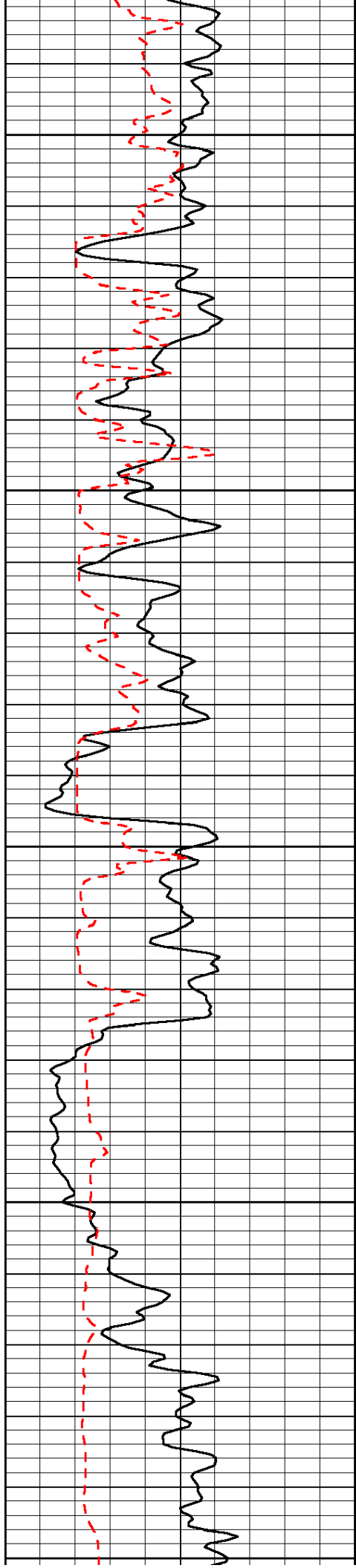
0	Gamma Ray	150	Sonic Int	140	Delta Time (usec/ft)	40
150	Gamma Ray	300	5	0	SPOR	-10
6	Caliper (GAPI)	16		15000	LTEN (lb)	0

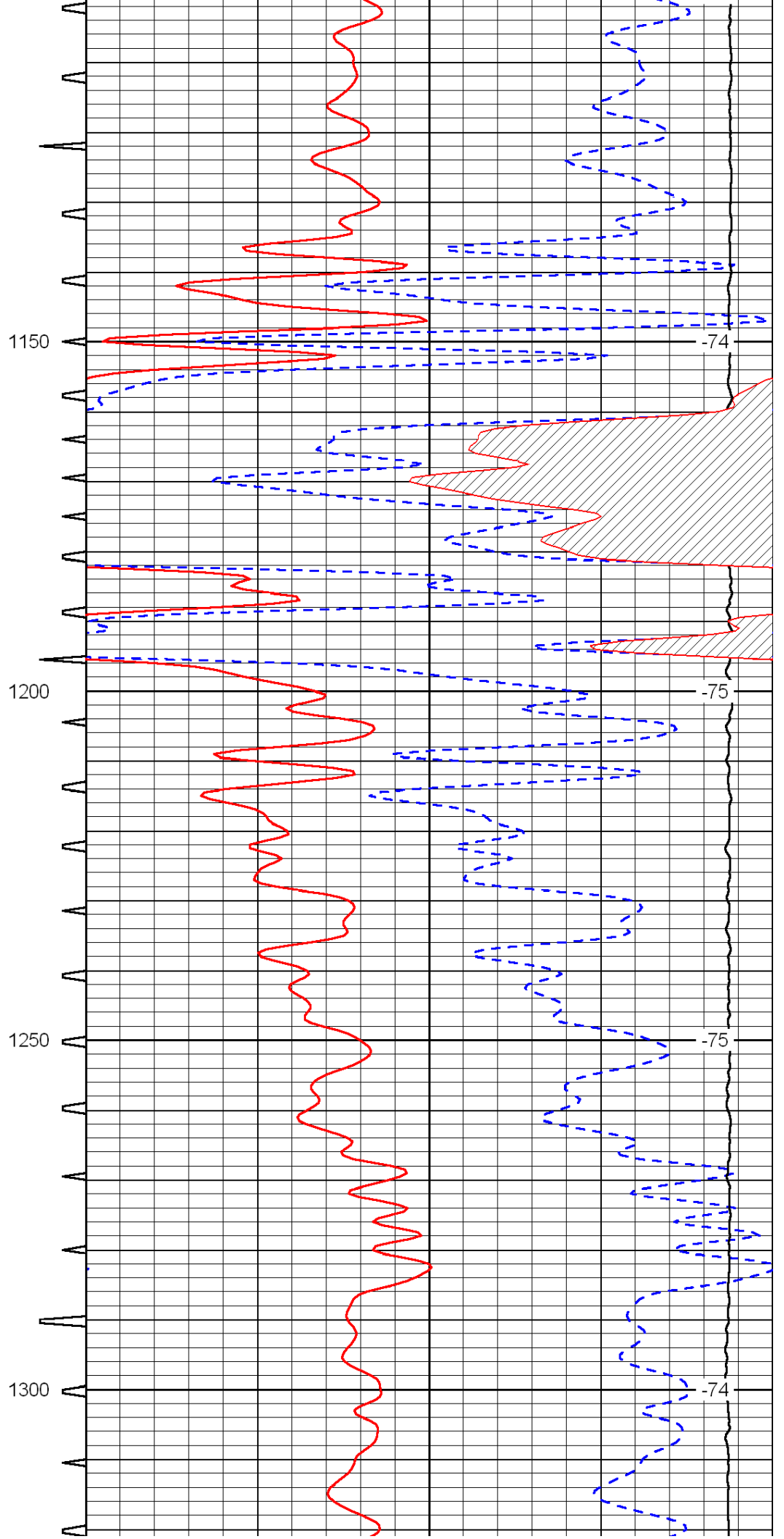
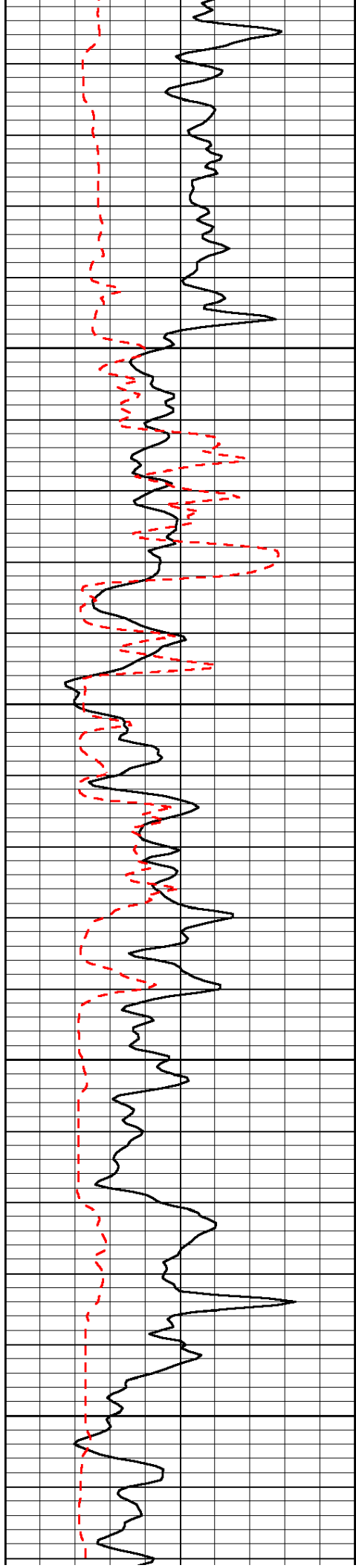
LSPD

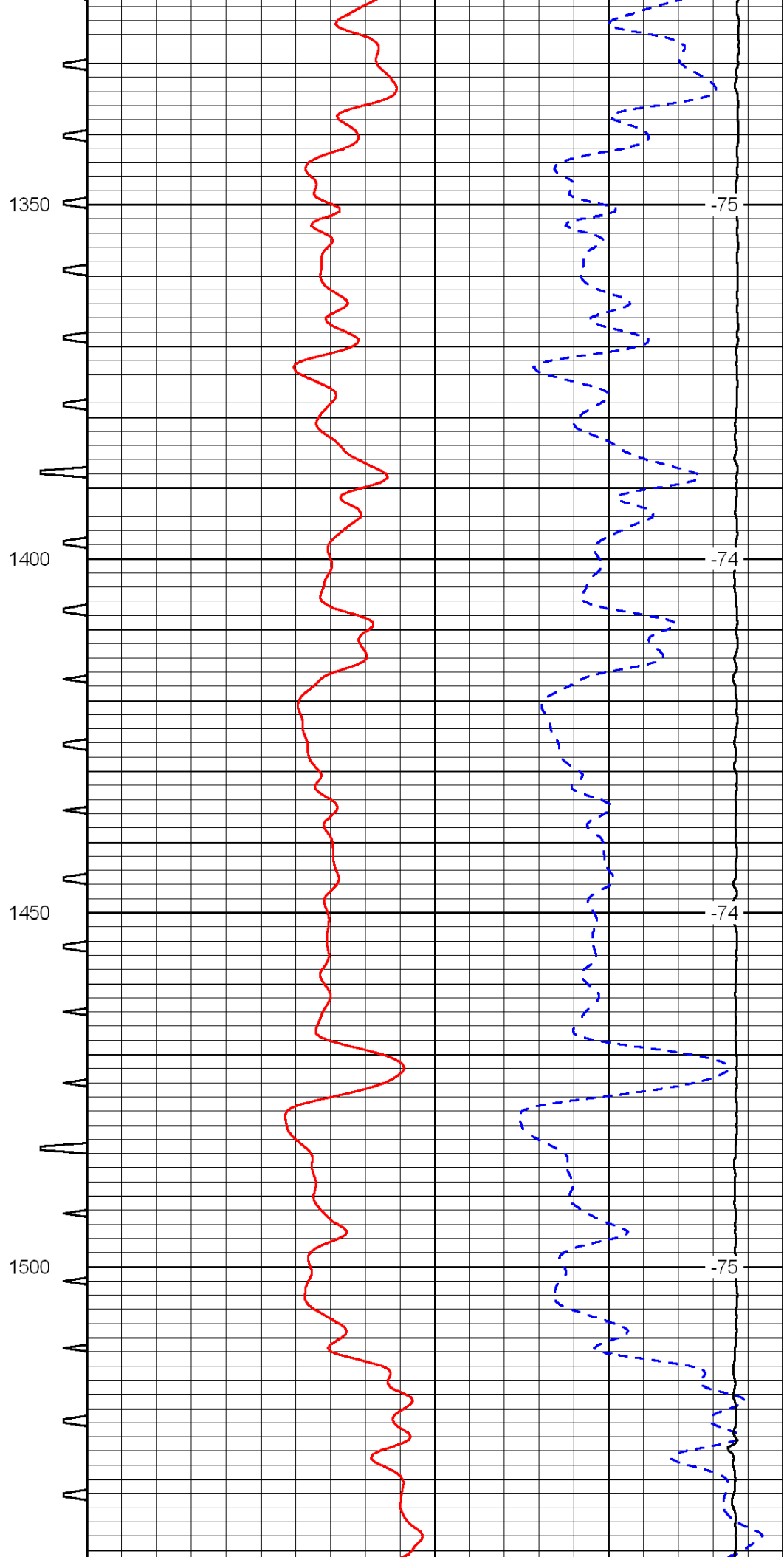
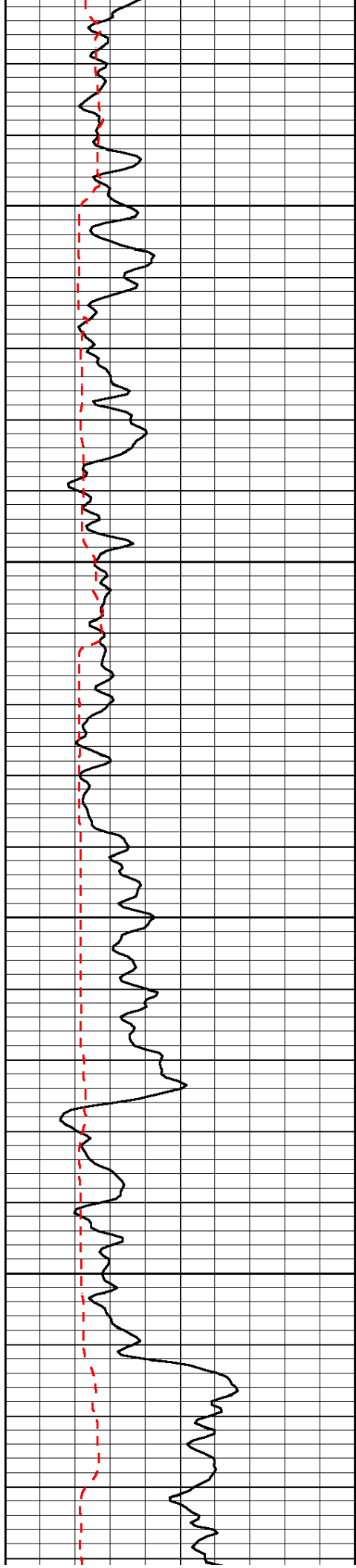


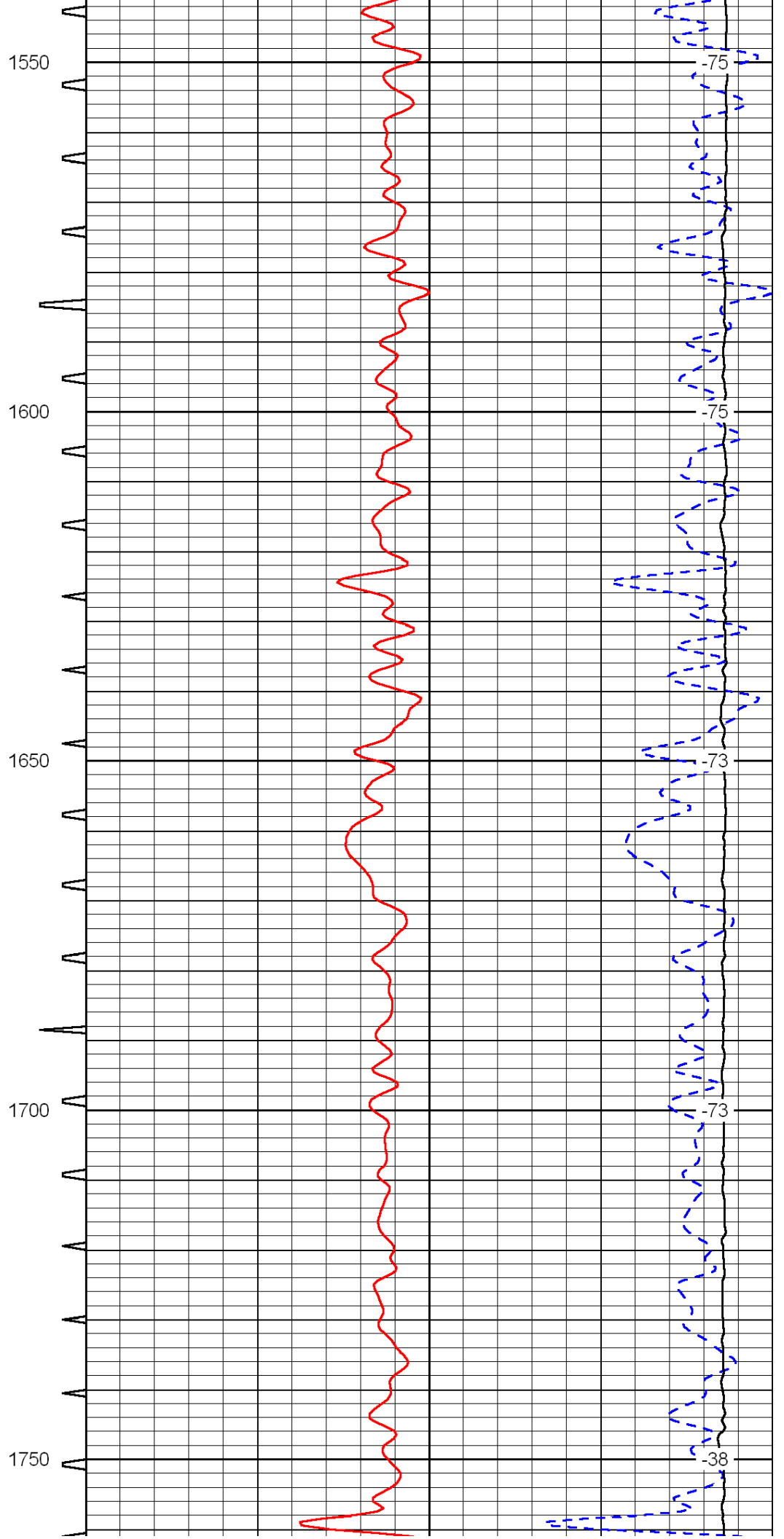
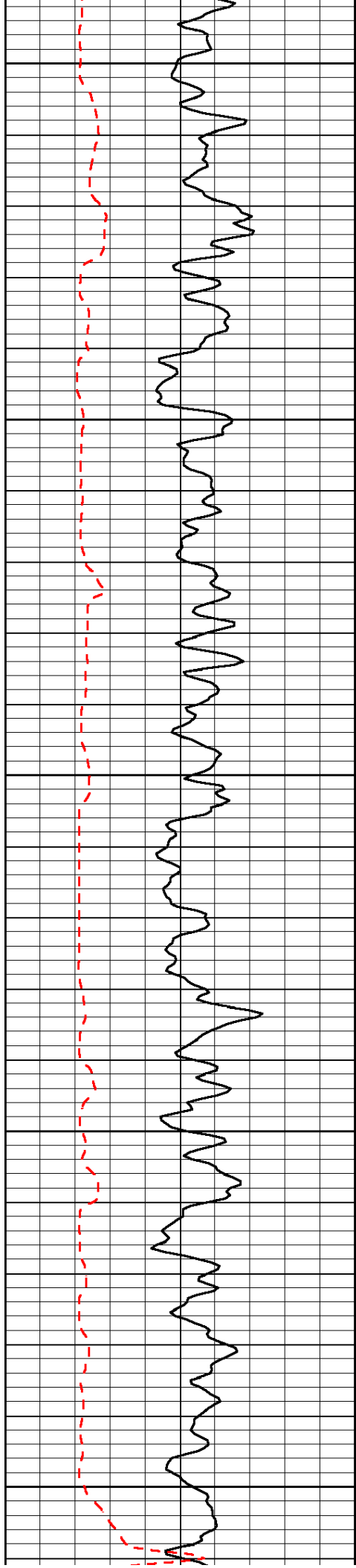


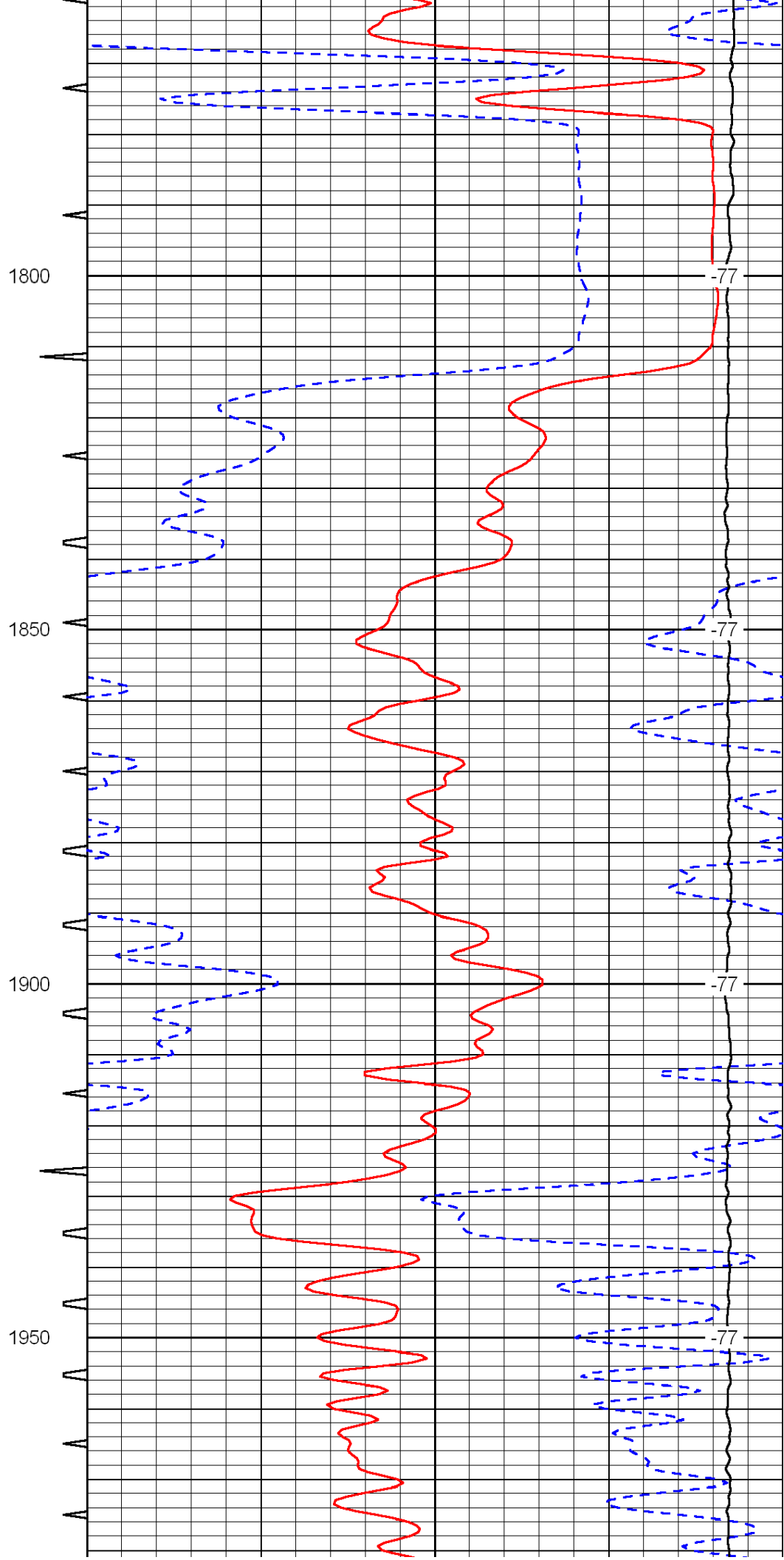
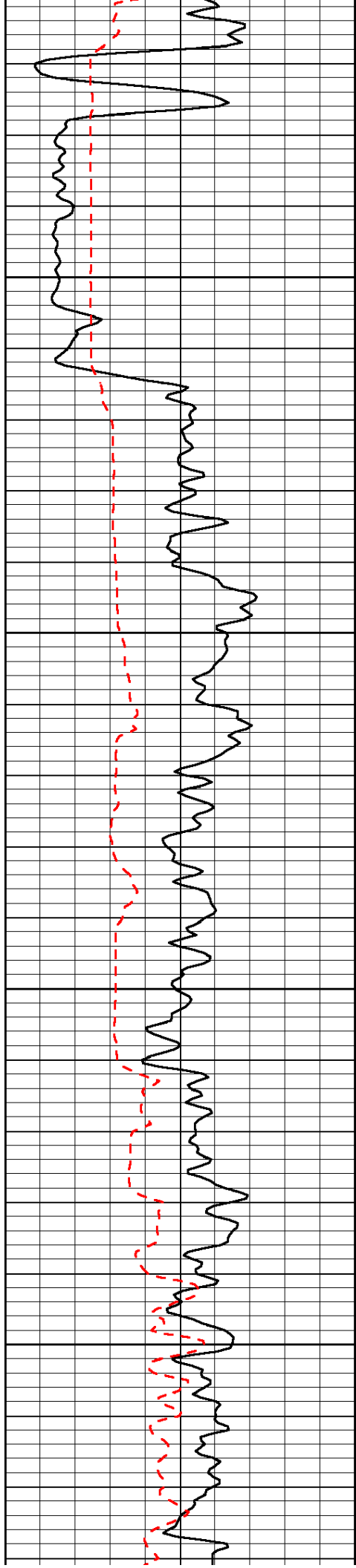


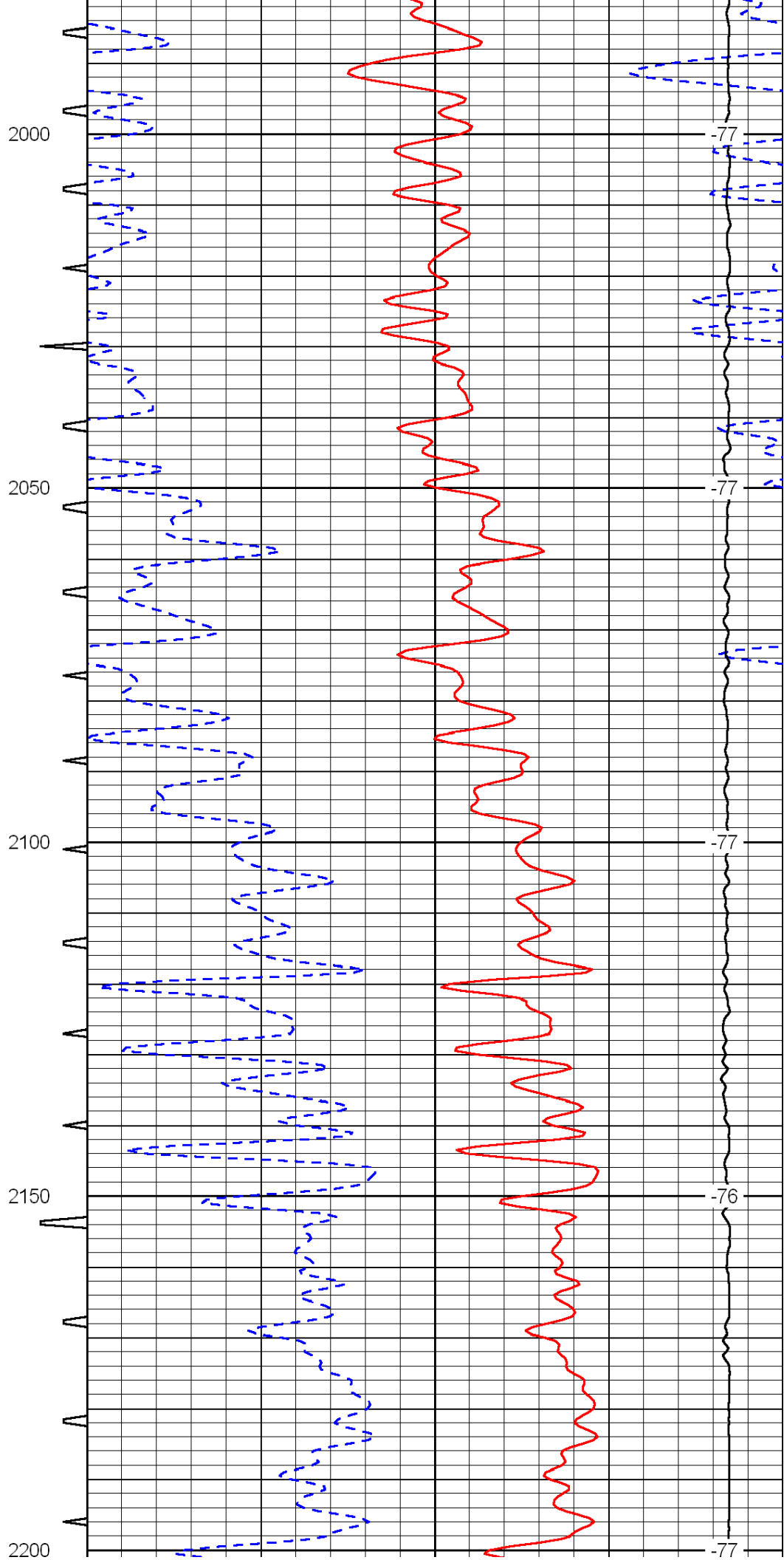
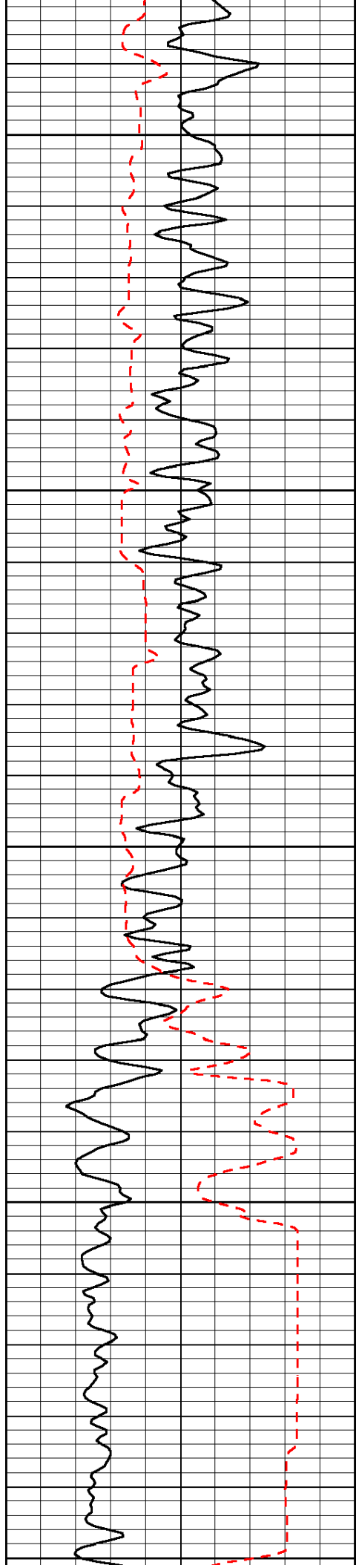


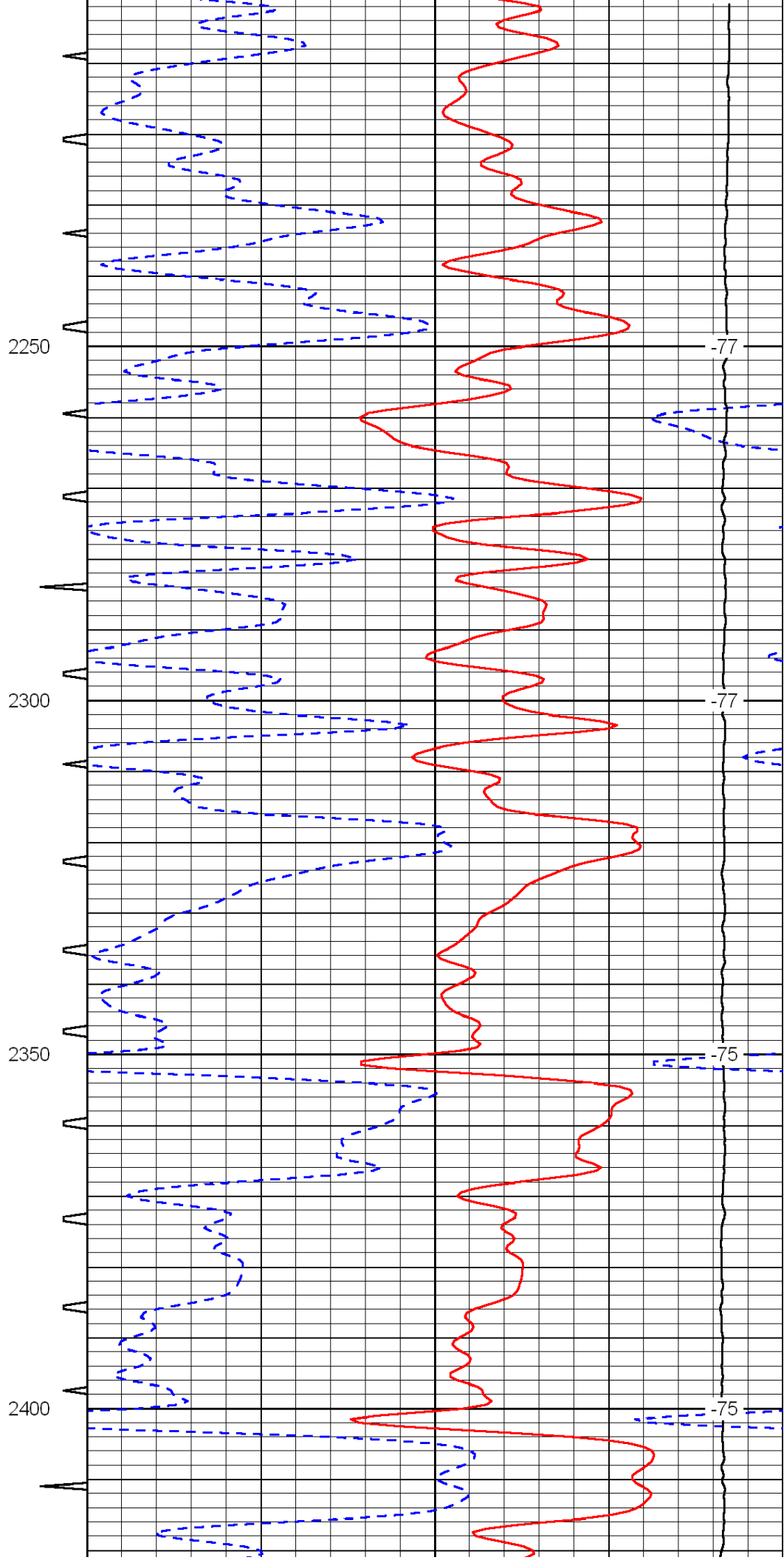
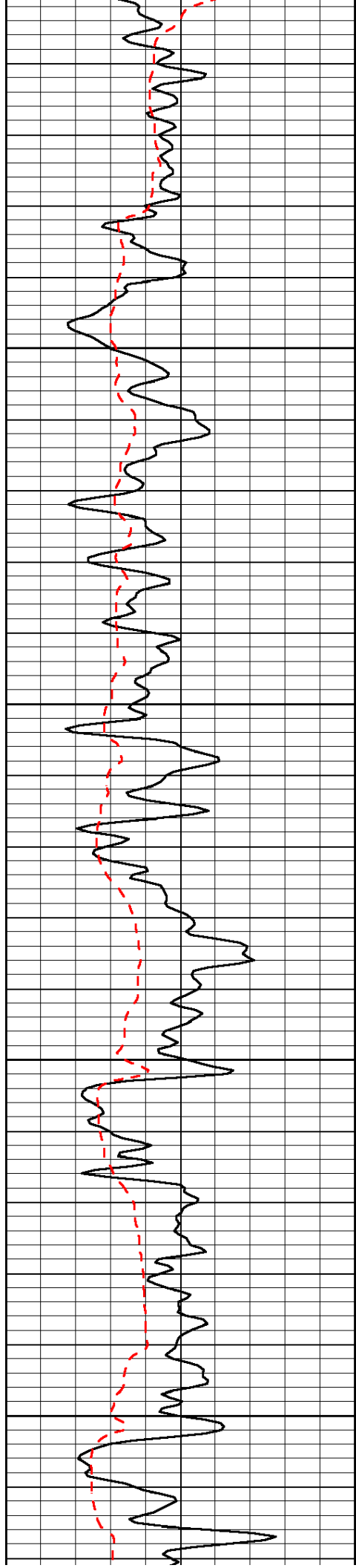


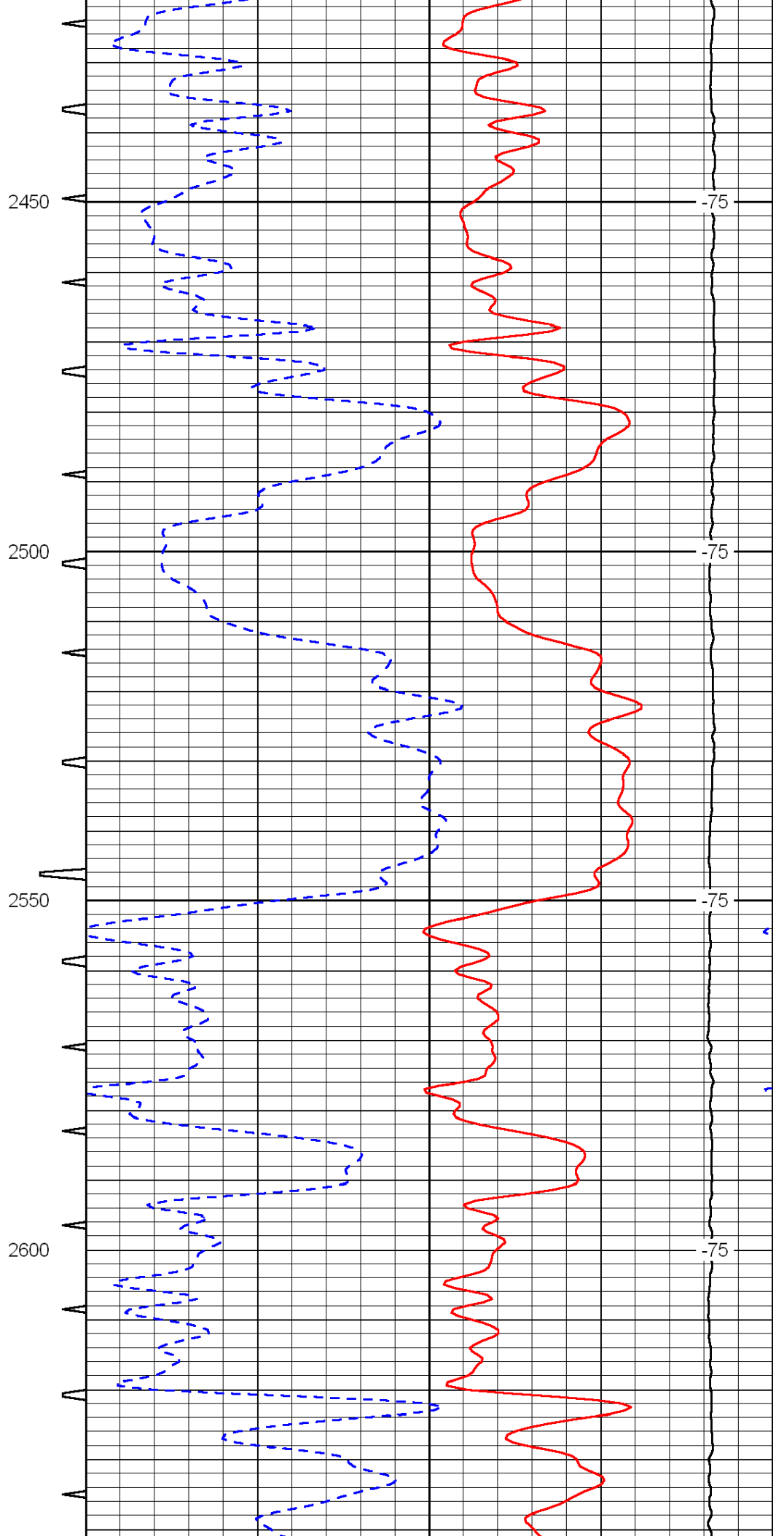
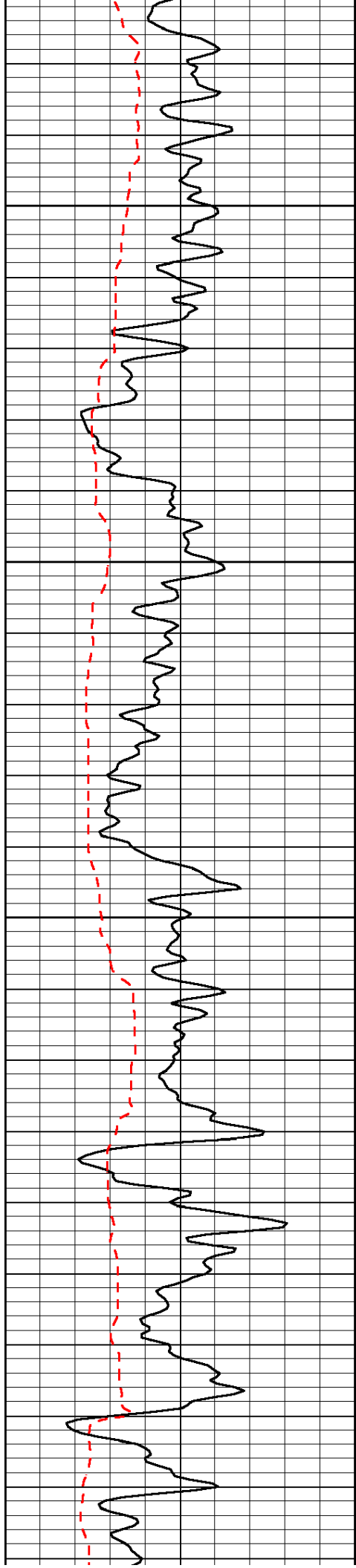


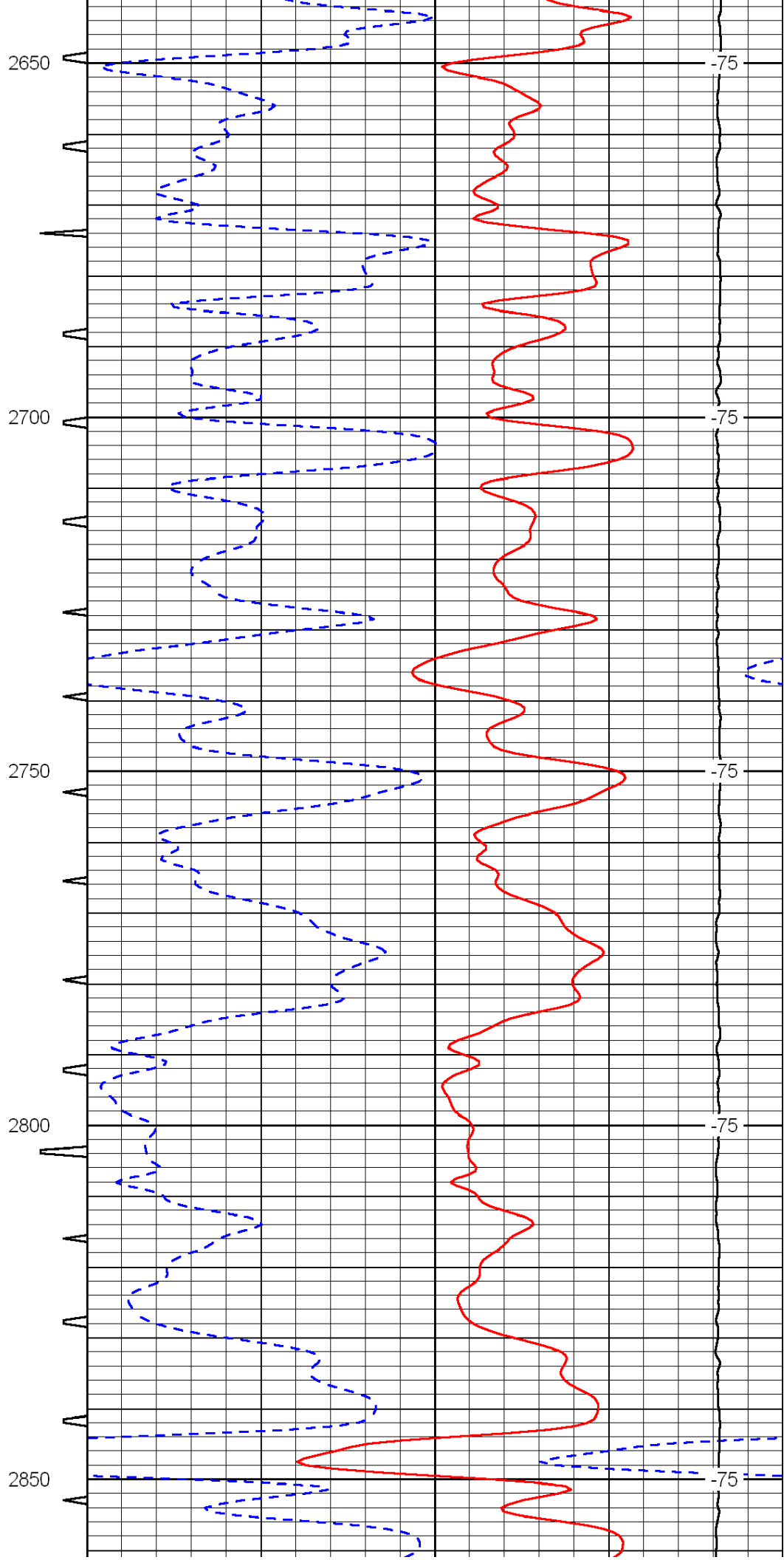
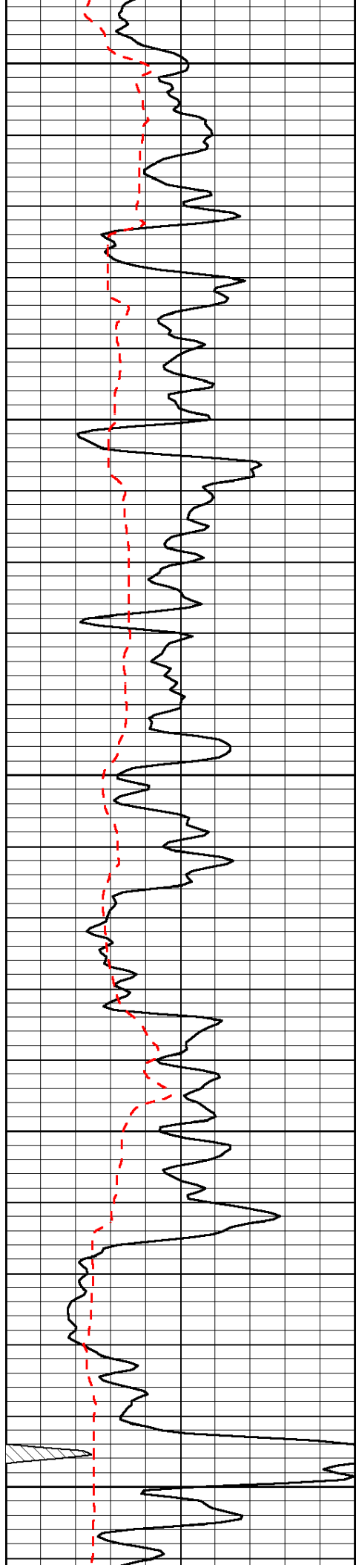


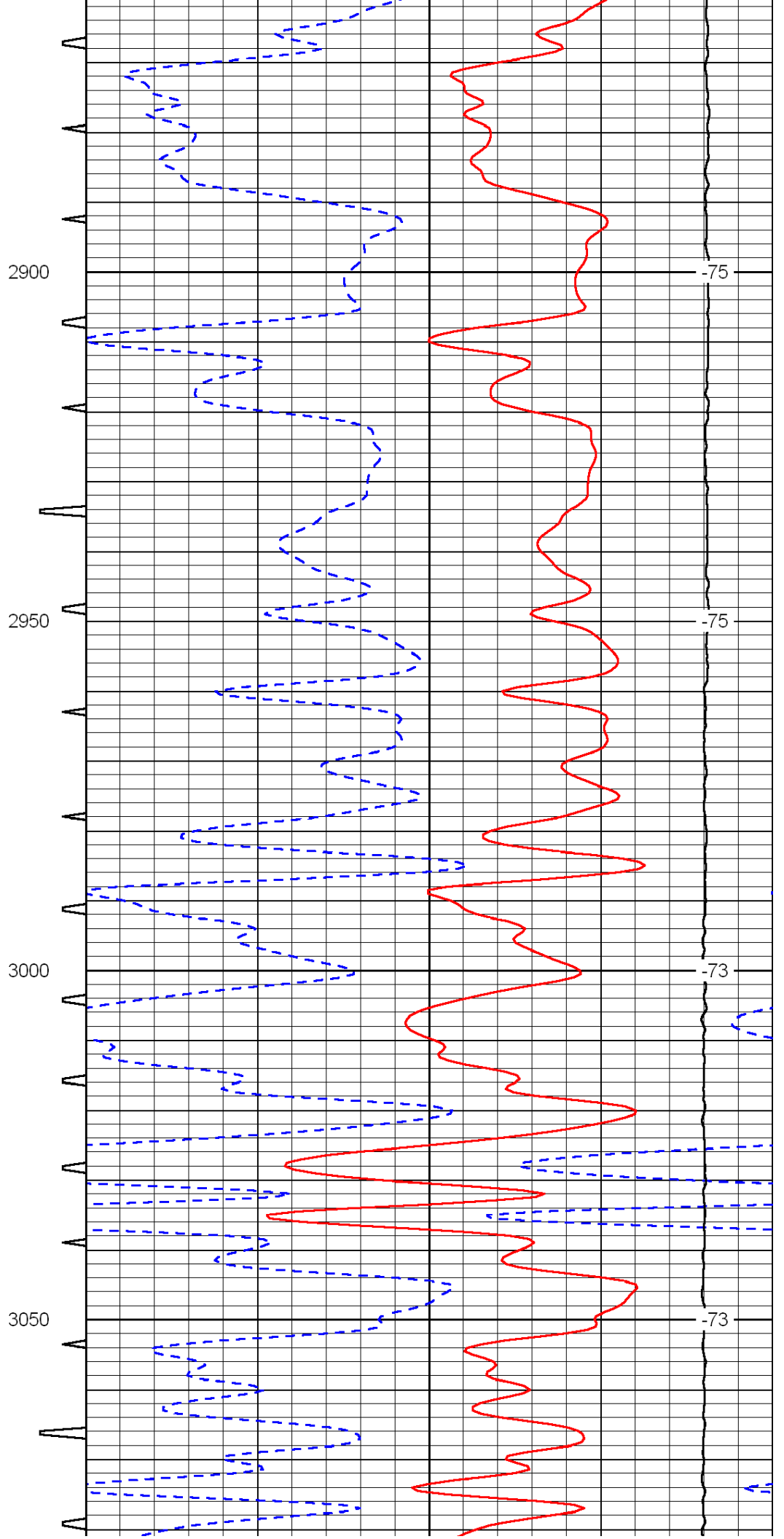
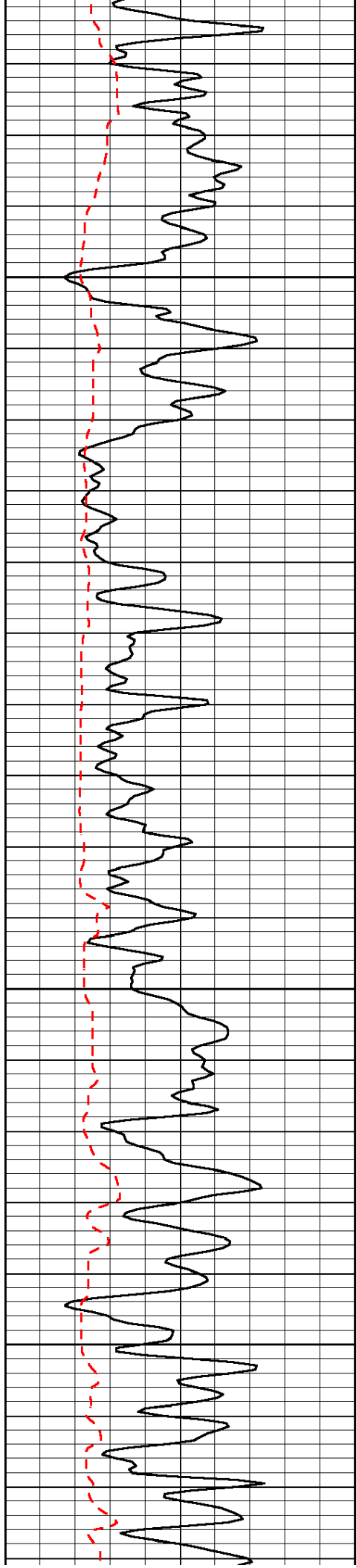


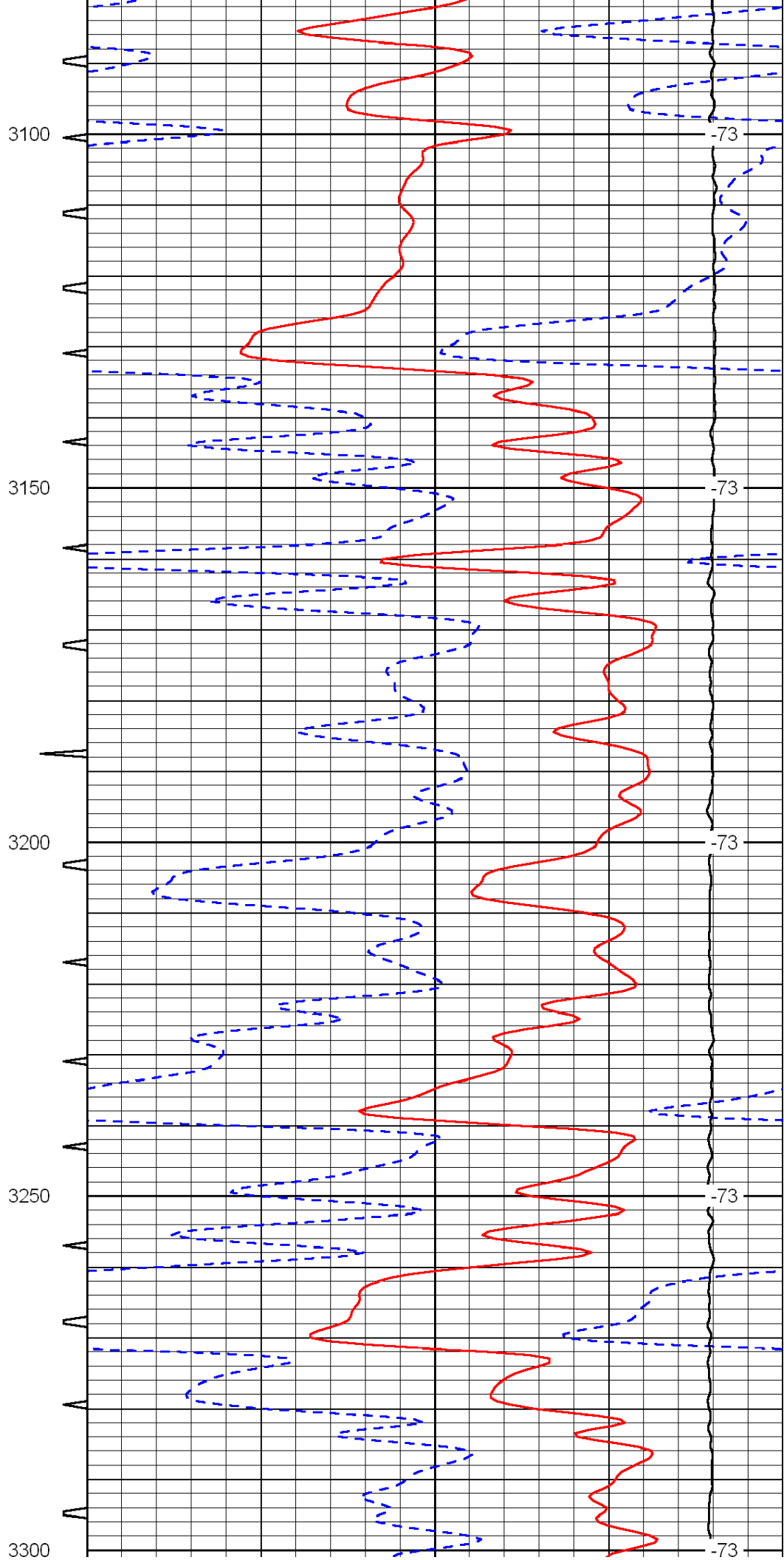
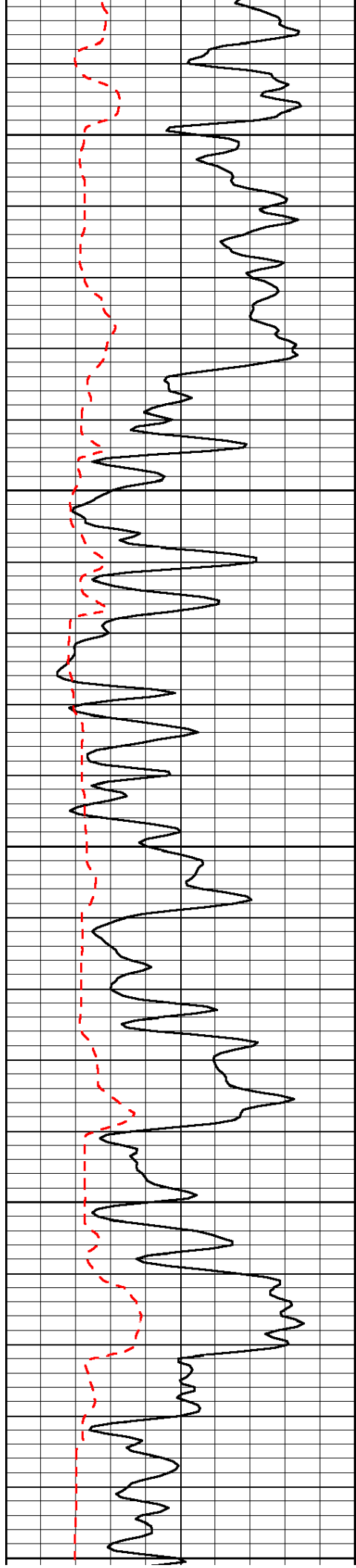


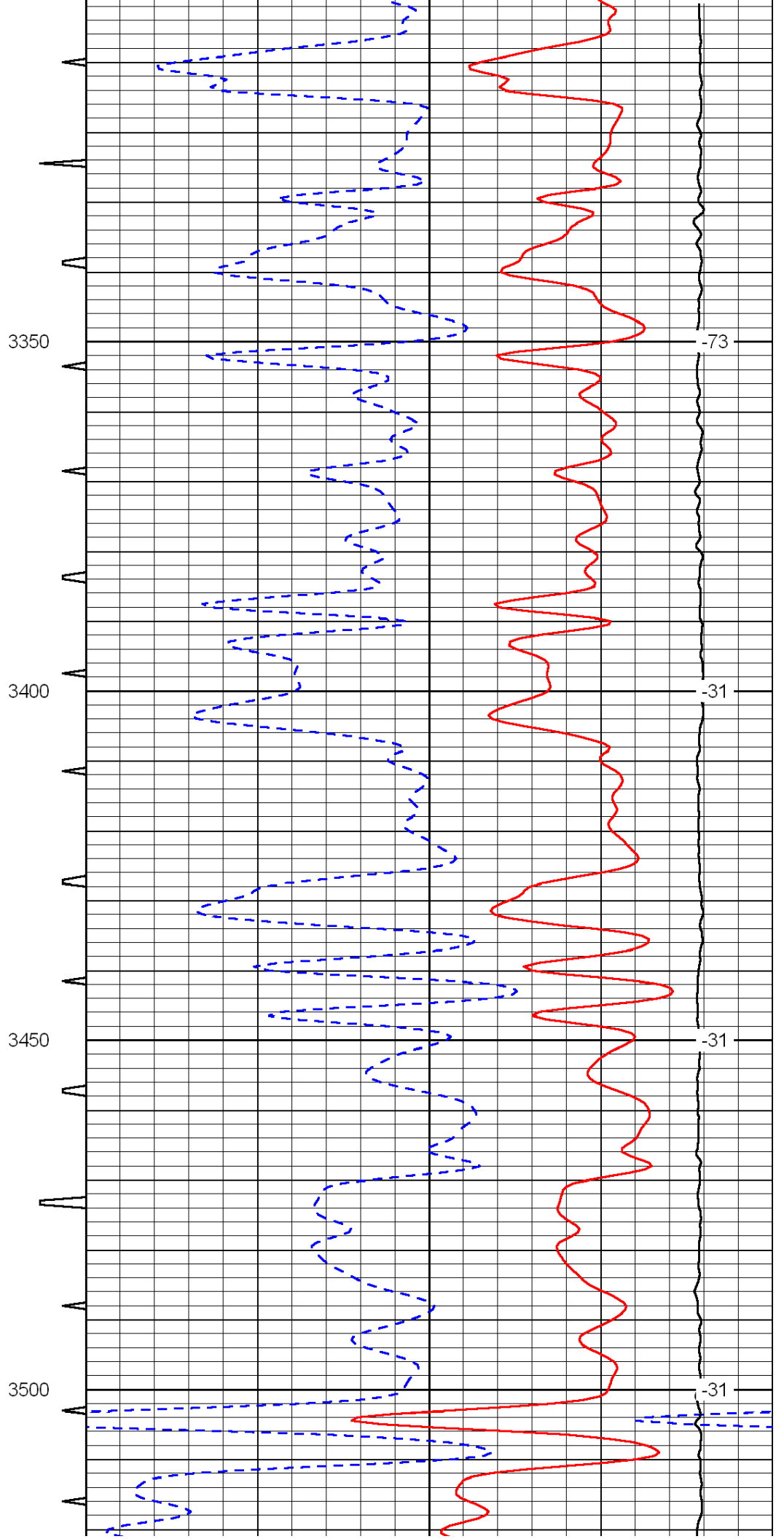
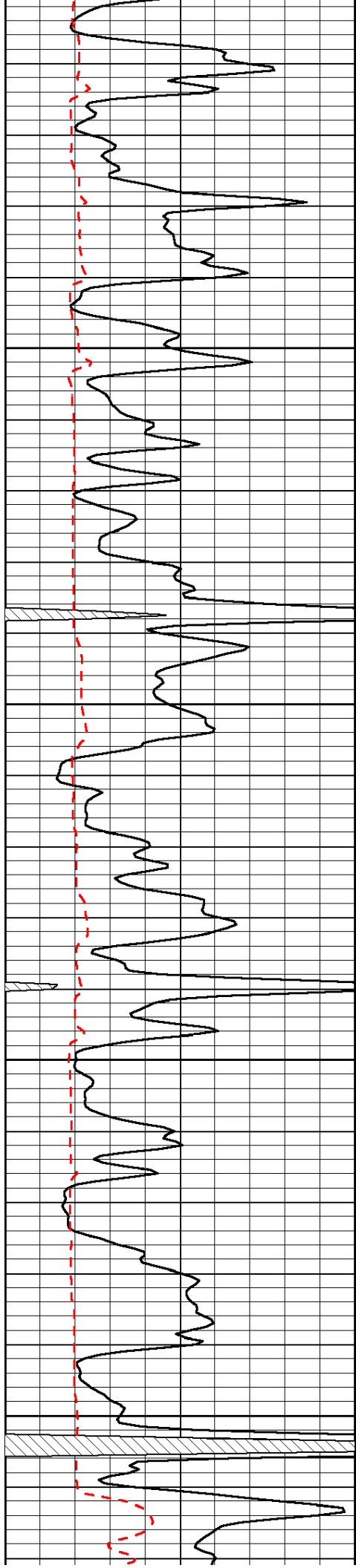


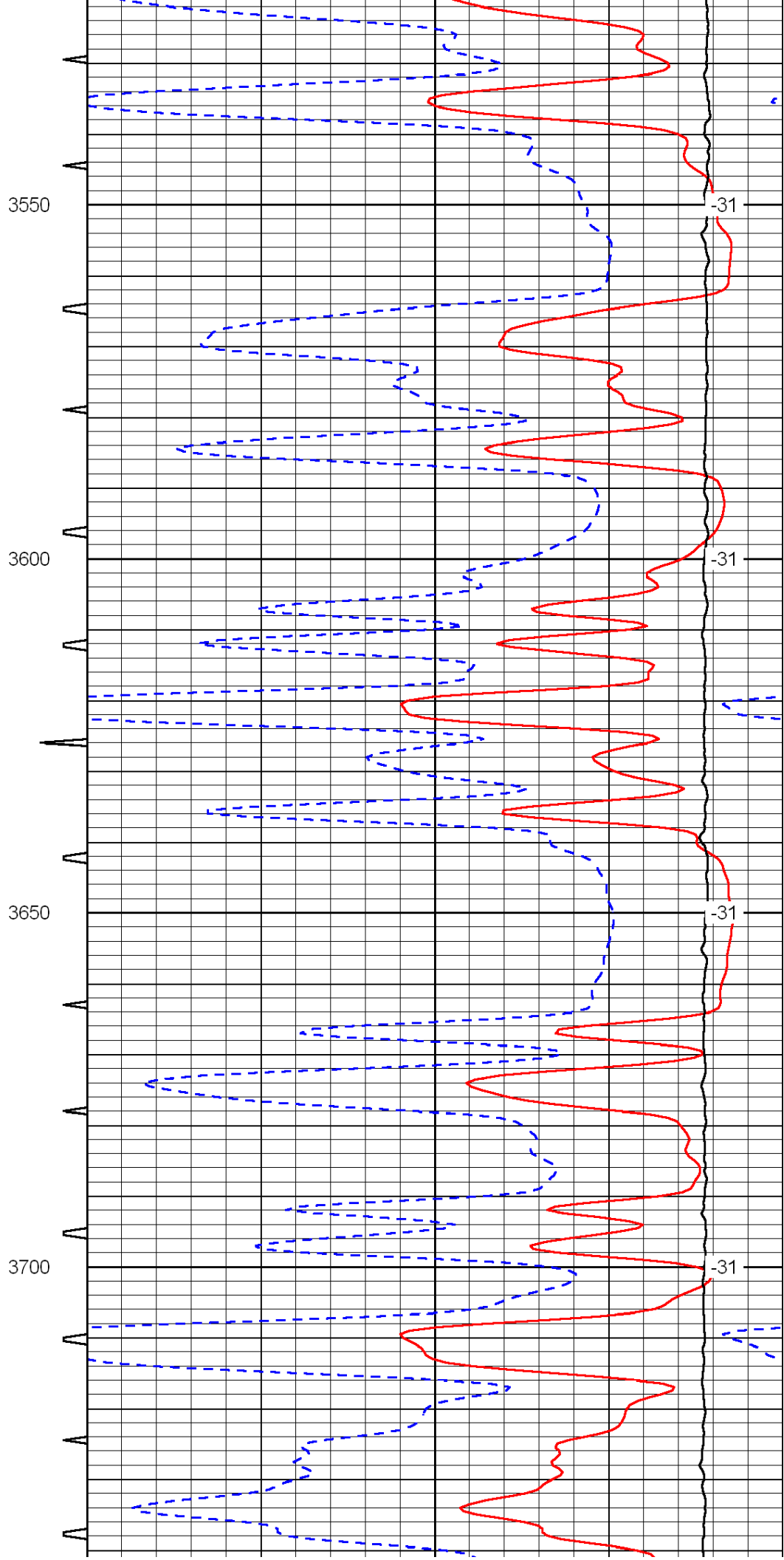
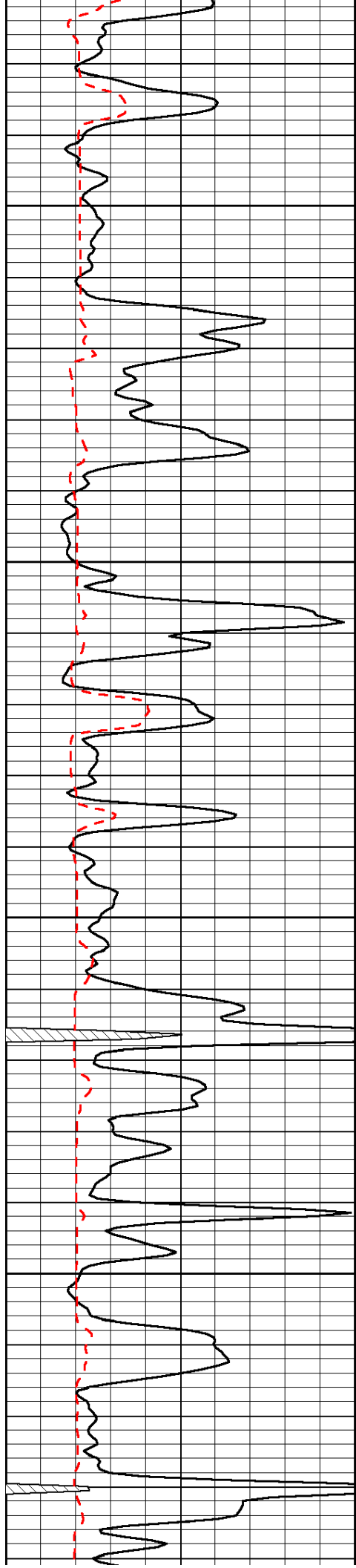


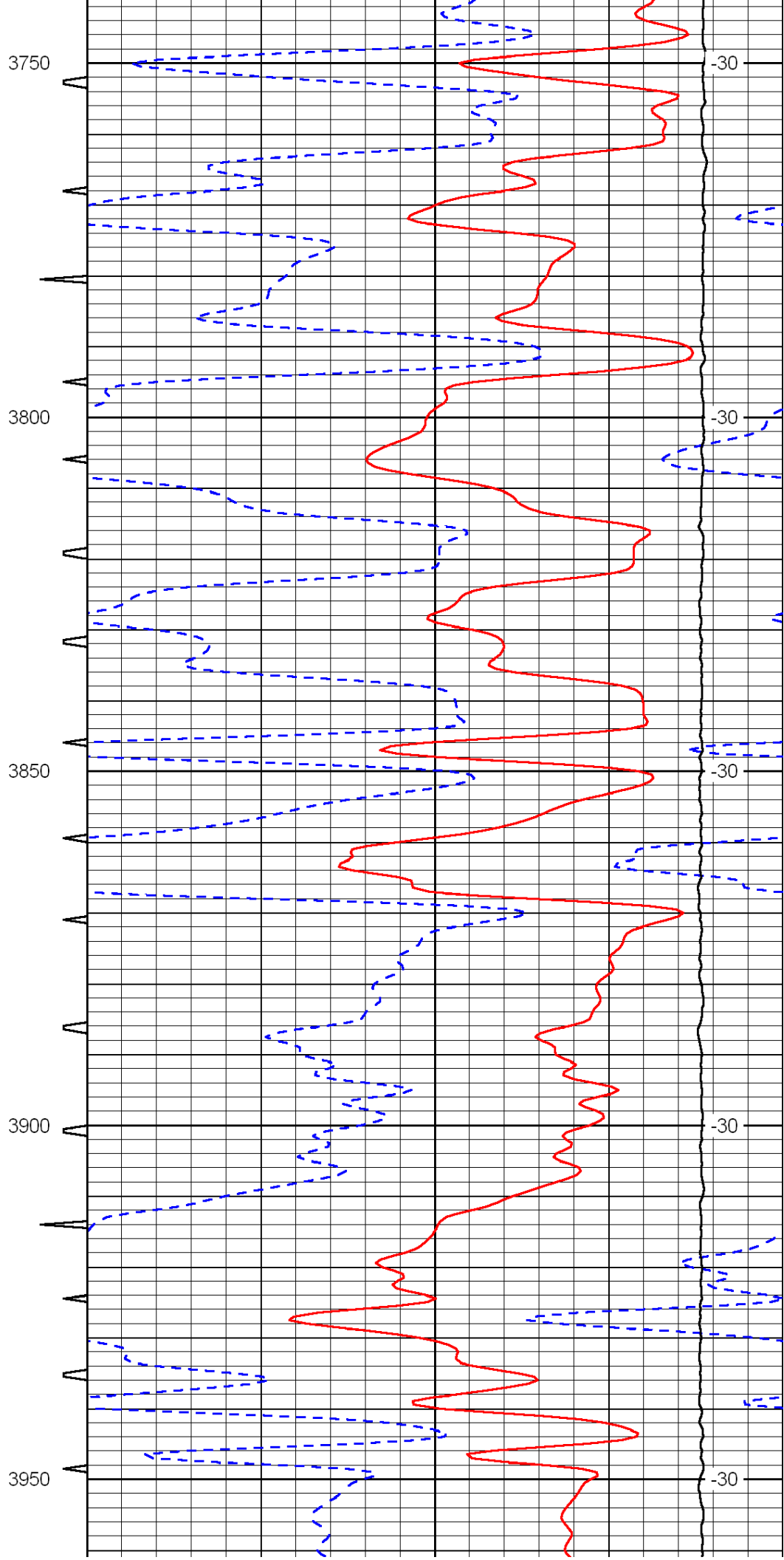
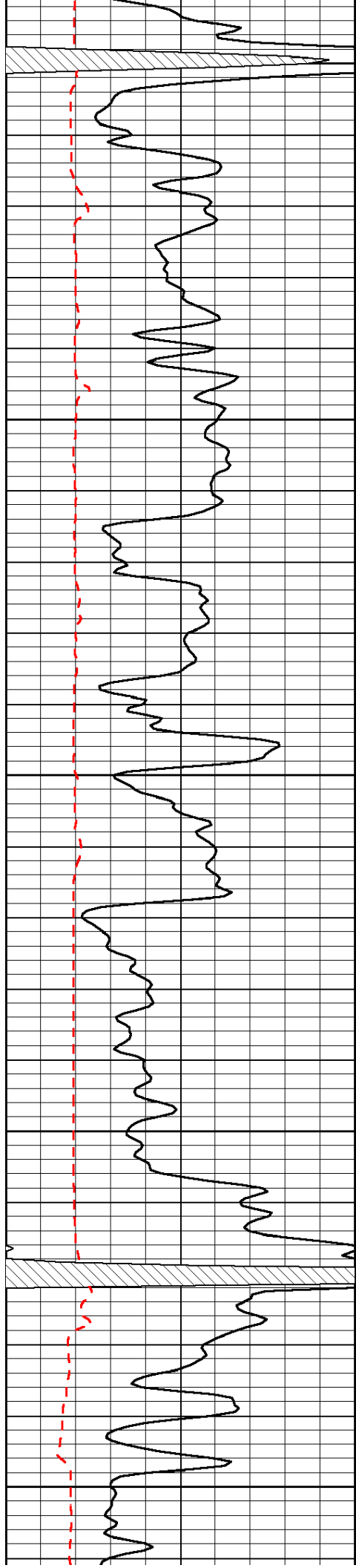


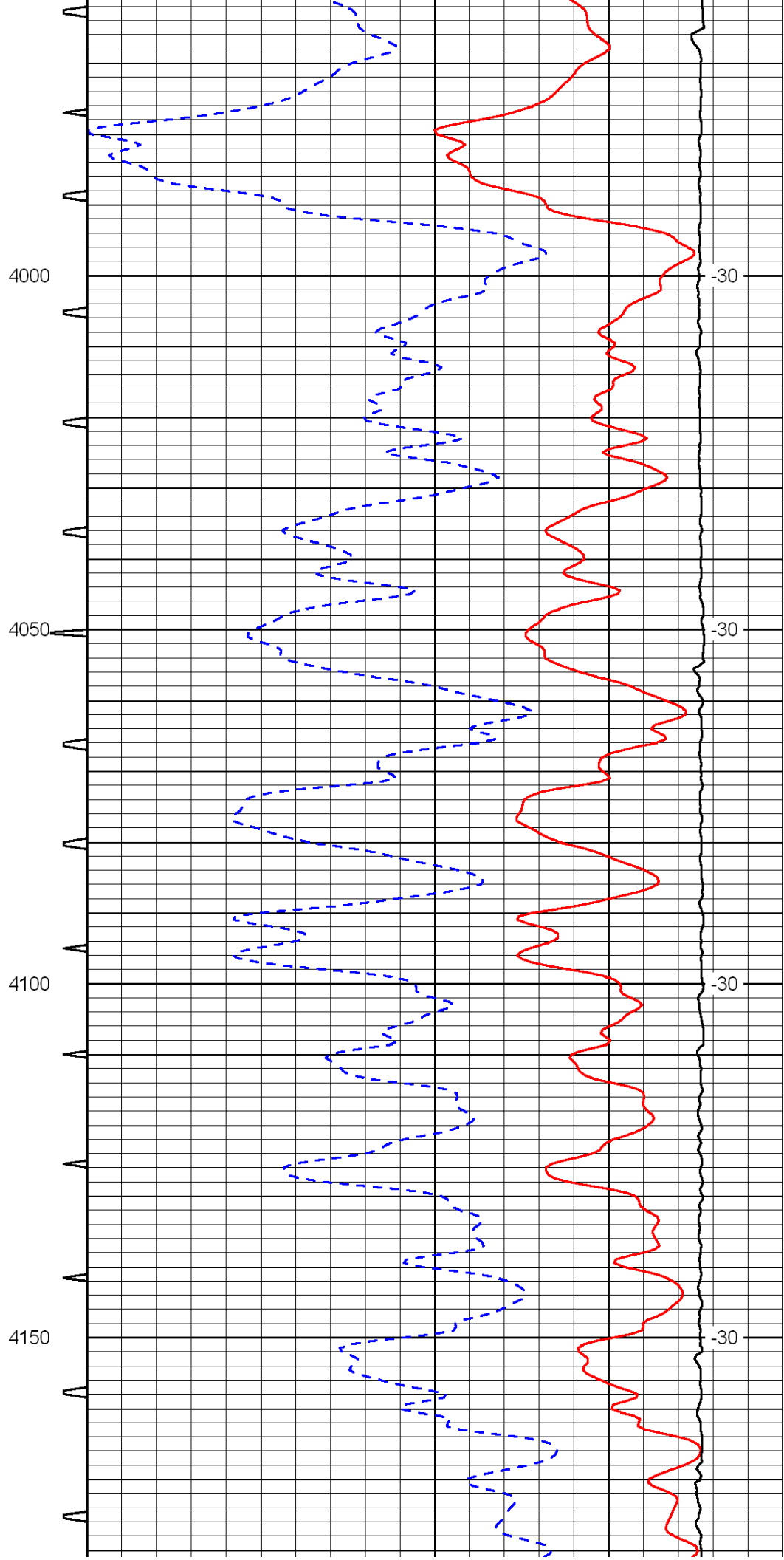
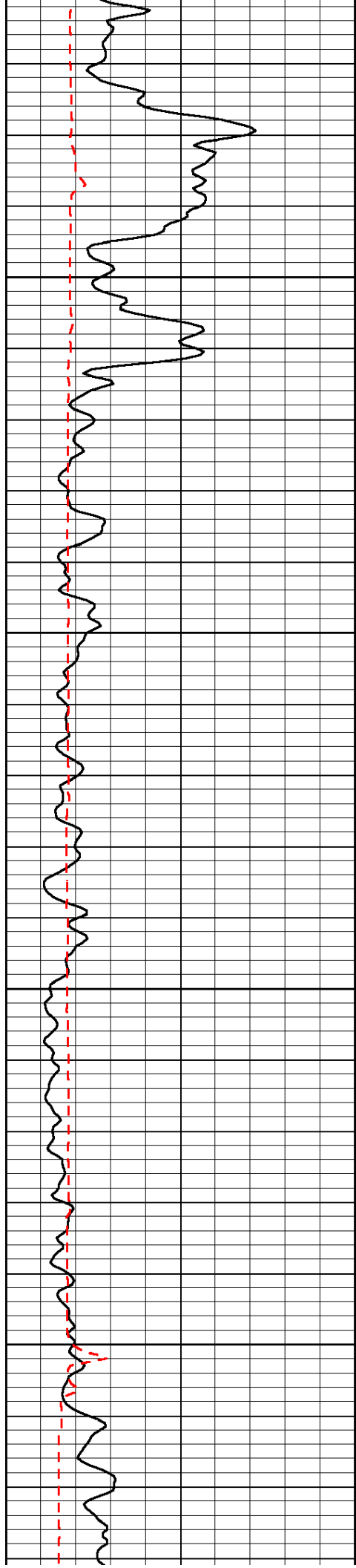


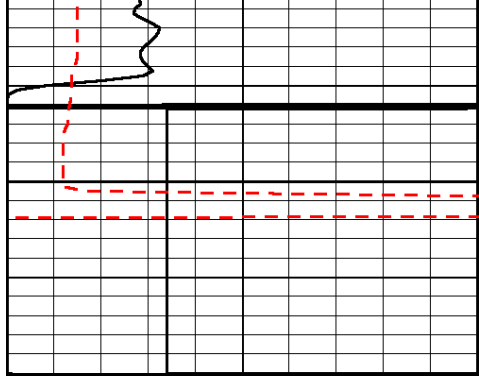




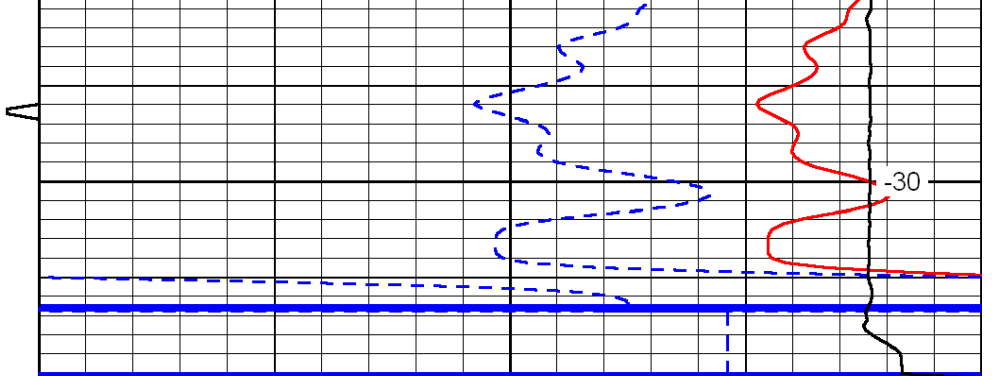








4200



0	Gamma Ray	150
150	Gamma Ray	300
6	Caliper (GAPI)	16

Sonic Int	140	Delta Time (usec/ft)	40
5	0	SPOR	-10
	15000	LTEN (lb)	0

LSPD