



Dual Compensated  
Porosity Log

DIGITAL LOG (785) 625-3858

API No. 15-195-22691-00-00

Company Cholla Production, LLC  
Well Stithem No. 1-4  
Field Diebolt  
County Trego State Kansas

Location S/2 - NE - SE - SE  
960' FSL & 330' FEL

Other Services  
DIL  
MEI/BHCS

Permanent Datum Ground Level Elevation 2286  
Log Measured From Kelly Bushing 5 Ft. Above Perm. Datum  
Drilling Measured From Kelly Bushing

Sec: 4 Twp: 11 S Rge: 23 W

K.B. 2291  
D.F.  
G.L. 2286

Date 12/15/2010

Run Number One

Type Log CNL / CDL

Depth Driller 4210

Depth Logger 4215

Bottom Logged Interval 4194

Top Logged Interval 3400

Type Fluid In Hole Chemical

Salinity, PPM CL 2,500

Density 9.2

Level Full

Max. Rec. Temp. F 118

Operating Rig Time 4 1/2 Hours

Equipment -- Location 15 Hays

Recorded By B. Becker

Witnessed By Bill Goff

Borehole Record				Casing Record			
Run No.	Bit	From	To	Size	Wgt.	From	To
1	12.25	00	261	8.625	24#	00	261
2	7.875	261	4210				

<<< Fold Here >>>

All interpretations are opinions based on inferences from electrical or other measurements and we cannot and do not guarantee the accuracy or correctness of any interpretation, and we shall not, except in the case of gross or willful negligence on our part, be liable or responsible for any loss, costs, damages, or expenses incurred or sustained by anyone resulting from any interpretation made by any of our officers, agents or employees. These interpretations are also subject to our general terms and conditions set out in our current Price Schedule.

Comments

Thank you for using Log-Tech, Inc.  
(785) 625-3858

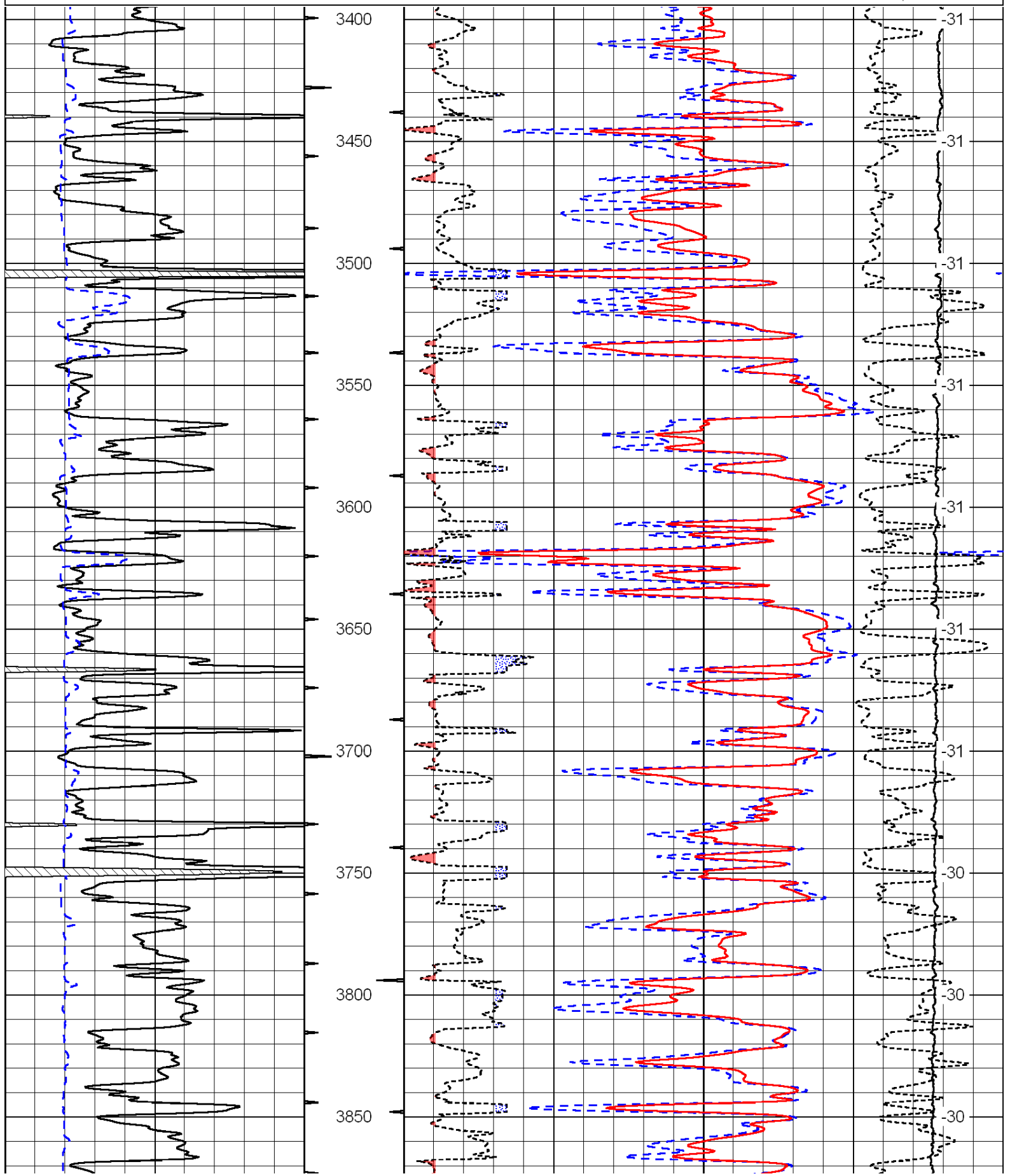
Wakeeney, Ks;  
7 North to Saline River Rd;  
West and North into

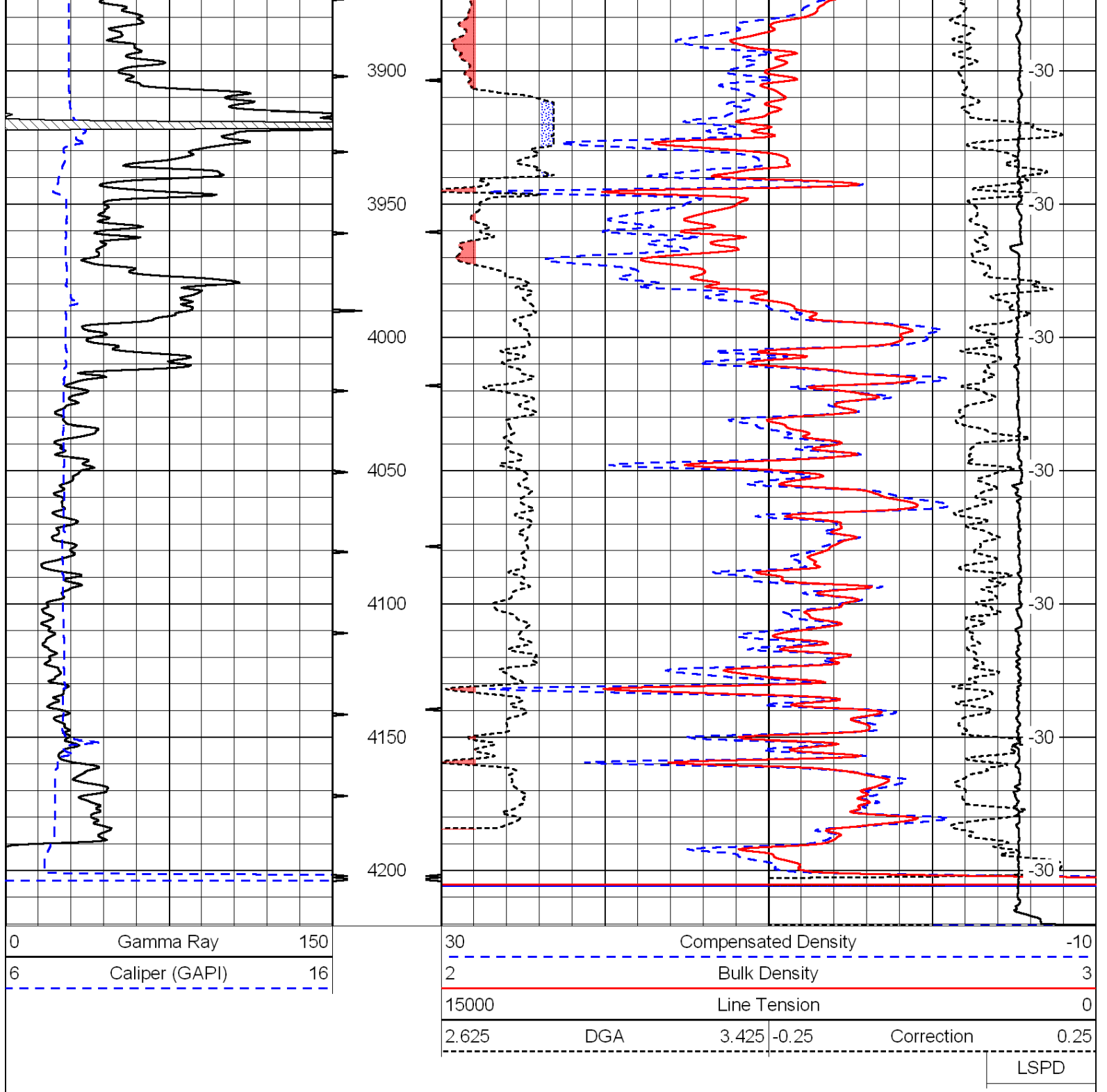
Database File: c:\warrior\data\cholla\_stithem no. 1-4\cholla hd.db  
Dataset Pathname: DIL\chostk2  
Presentation Format: cdl  
Dataset Creation: Wed Dec 15 23:31:13 2010  
Charted by: Depth in Feet scaled 1:600

0	Gamma Ray	150
6	Caliper (GAPI)	16

30	Compensated Density		-10
2	Bulk Density		3
15000	Line Tension		0
2.625	DGA	3.425	-0.25
Correction			0.25

LSPD





Database File: c:\warrior\data\cholla\_stithem no. 1-4\cholla.hd.db  
 Dataset Pathname: DIL/chostk2  
 Presentation Format: cndlspec  
 Dataset Creation: Wed Dec 15 23:31:13 2010  
 Charted by: Depth in Feet scaled 1:240

