



DIGITAL LOG (785) 625-3858

Dual Induction Log

API No. 15-195-22691-00-00

Company Cholla Production, LLC
 Well Stithem No. 1-4
 Field Diebolt
 County Trego State Kansas

Location S/2 - NE - SE - SE
 960' FSL & 330' FEL

Other Services
 CNL/CDL
 MEL/BHCS

Sec: 4 Twp: 11 S Rge: 23 W
 Elevation 2286

Permanent Datum Ground Level Kelly Bushing
 Log Measured From Kelly Bushing 5 Ft. Above Perm. Datum
 Drilling Measured From Kelly Bushing

K.B. 2291
 D.F. G.L. 2286

Date	12/15/2010
Run Number	One
Depth Driller	4210
Depth Logger	4215
Bottom Logged Interval	4214
Top Log Interval	250
Casing Driller	8.625 @ 261
Casing Logger	261
Bit Size	7.875
Type Fluid in Hole	Chemical
Salinity, ppm CL	2.500
Density / Viscosity	9.2 52
pH / Fluid Loss	10.0 8.0
Source of Sample	Flowline
Rm @ Meas. Temp	1.80 @ 60
Rmf @ Meas. Temp	1.35 @ 60
Rmc @ Meas. Temp	2.43 @ 60
Source of Rmf / Rmc	Charts
Rm @ BHT	0.91 @ 118
Operating Rig Time	4 1/2 Hours
Max Rec. Temp. F	118
Equipment Number	15
Location	Hays
Recorded By	B. Becker
Witnessed By	Bill Goff

<<< Fold Here >>>

All interpretations are opinions based on inferences from electrical or other measurements and we cannot and do not guarantee the accuracy or correctness of any interpretation, and we shall not, except in the case of gross or willful negligence on our part, be liable or responsible for any loss, costs, damages, or expenses incurred or sustained by anyone resulting from any interpretation made by any of our officers, agents or employees. These interpretations are also subject to our general terms and conditions set out in our current Price Schedule.

Comments

Thank you for using Log-Tech, Inc.
 (785) 625-3858

Wakeeney, Ks;
 7 North to Saline River Rd;
 West and North into

Database File: c:\warrior\data\cholla_stithem no. 1-4\cholla hd.db
 Dataset Pathname: DIL\chostk2
 Presentation Format: dil2in
 Dataset Creation: Wed Dec 15 23:31:13 2010
 Charted by: Depth in Feet scaled 1:600

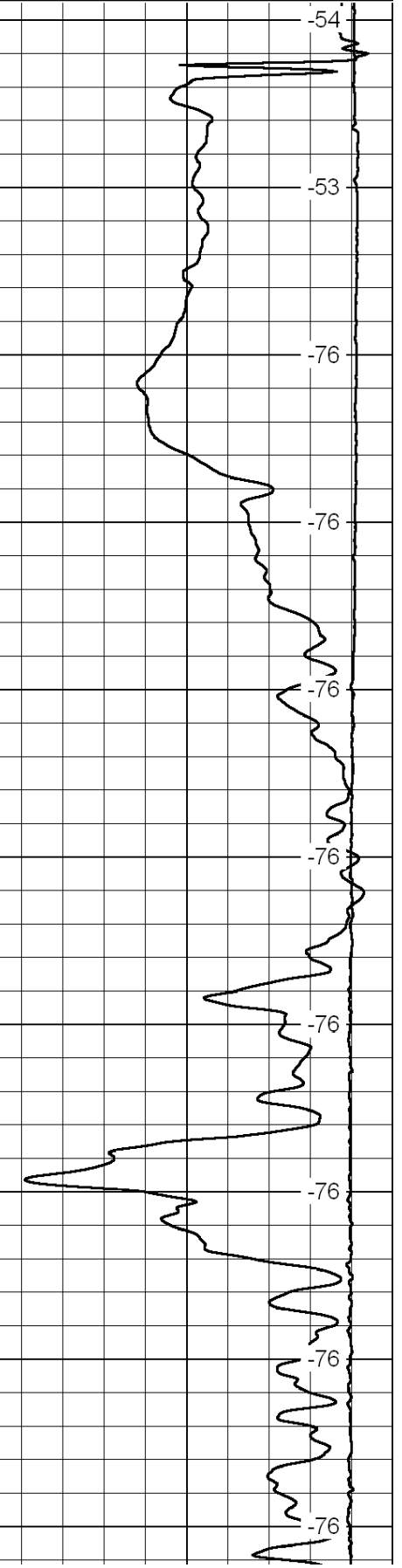
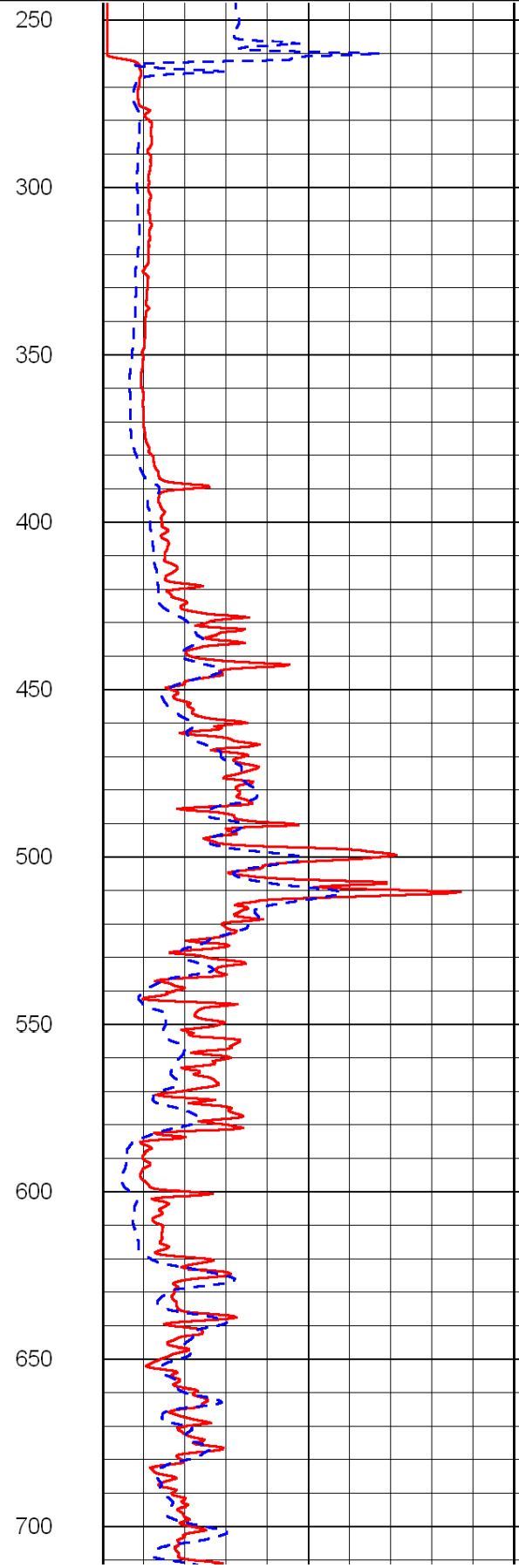
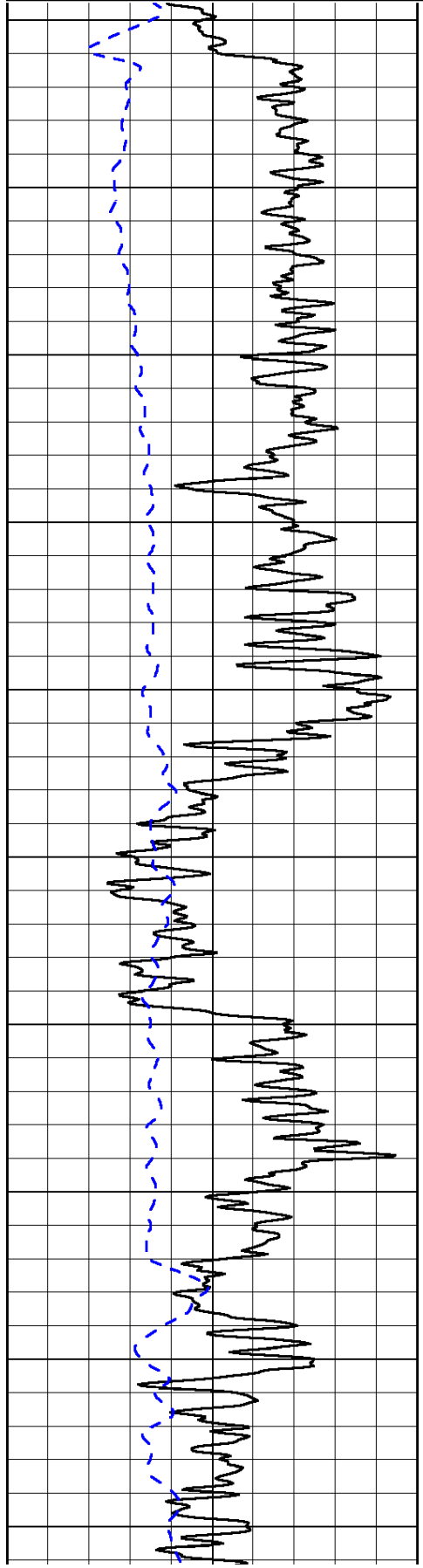
0	Gamma Ray	150
-200	SP (mV)	0

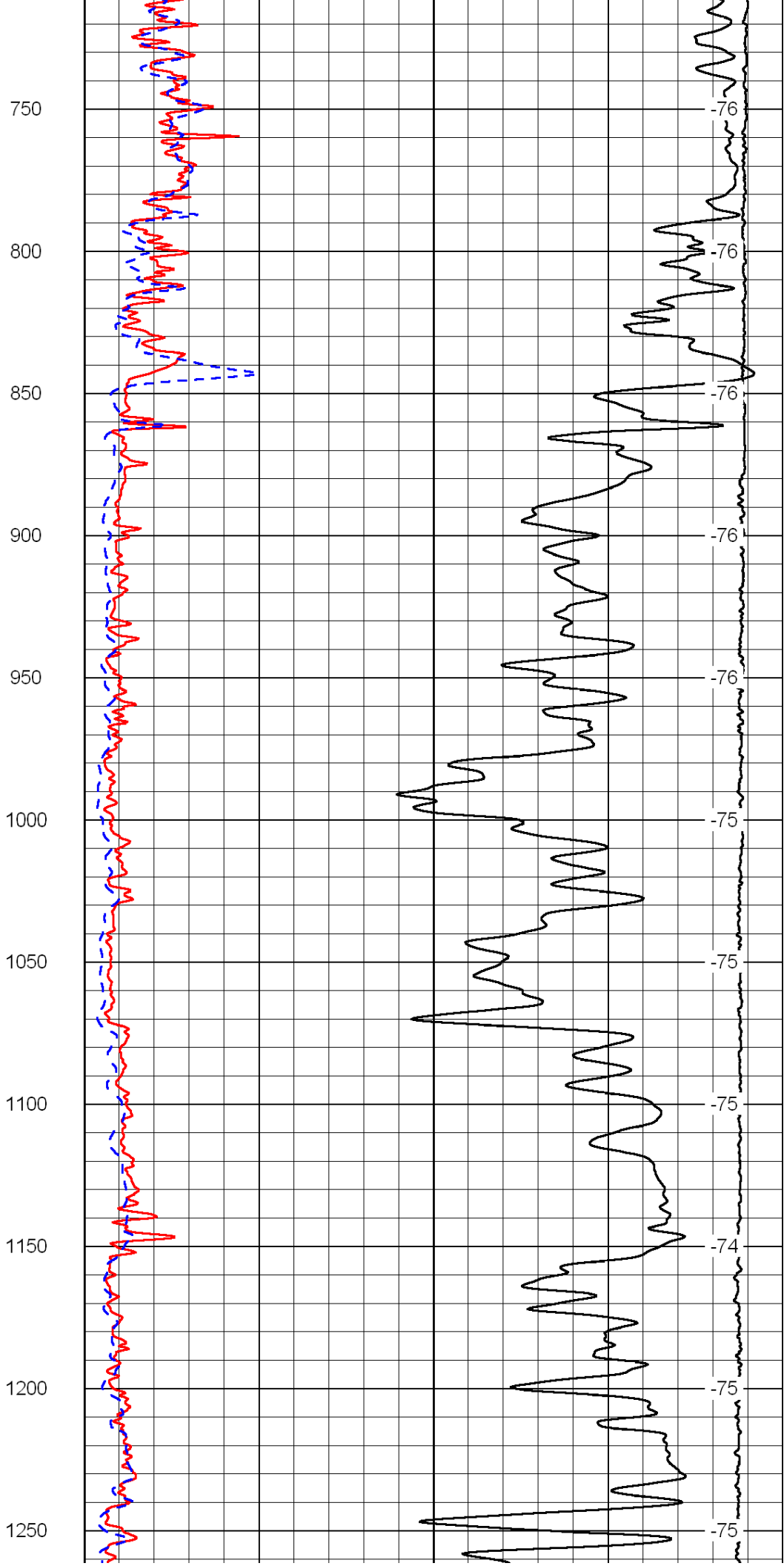
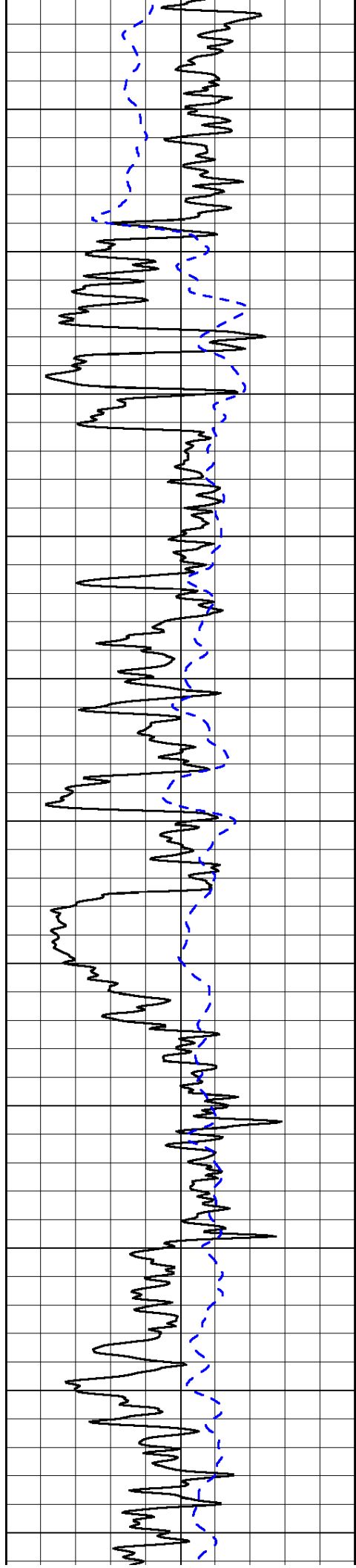
0	Shallow Resistivity	50
0	Deep Resistivity	50

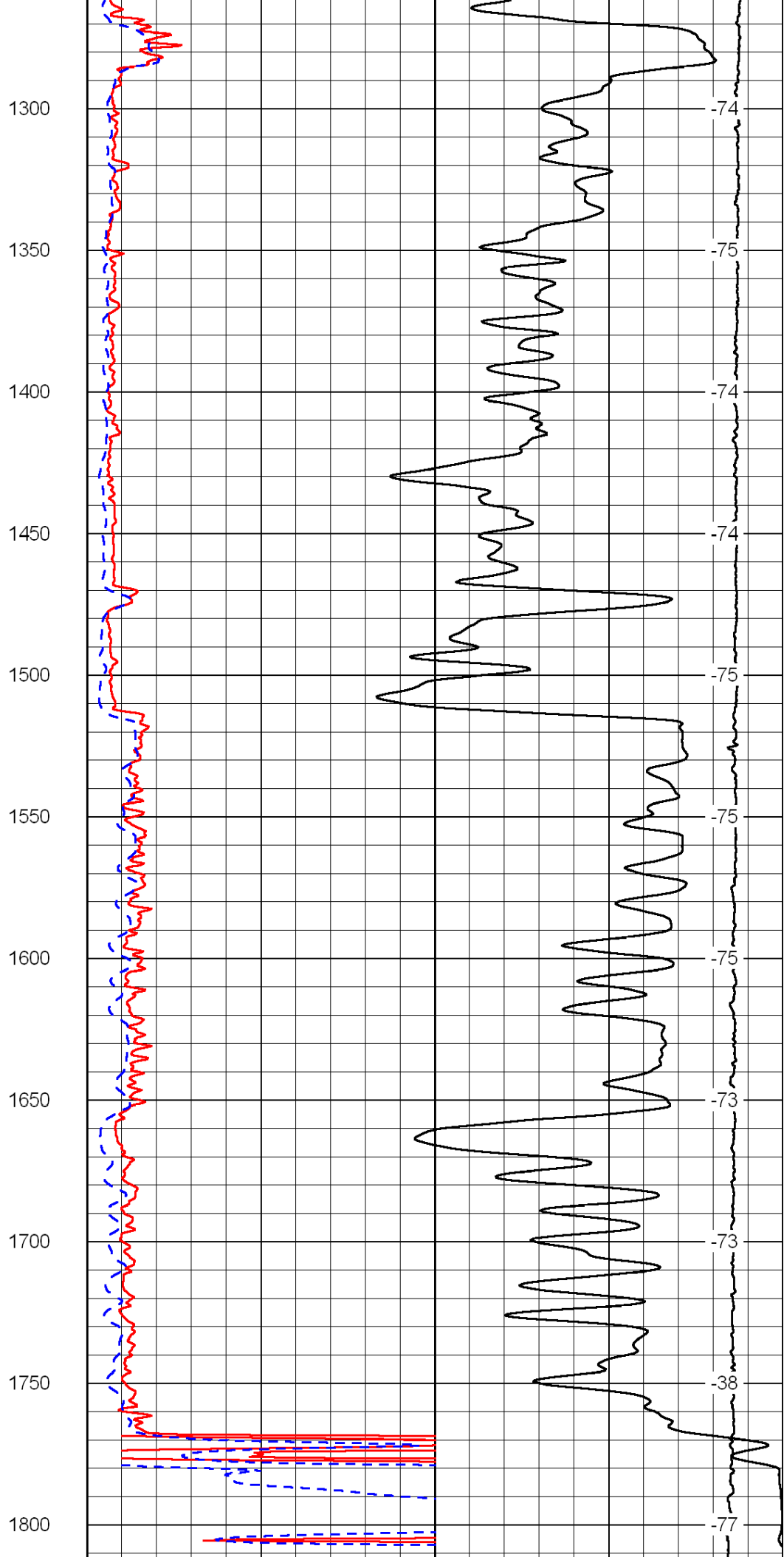
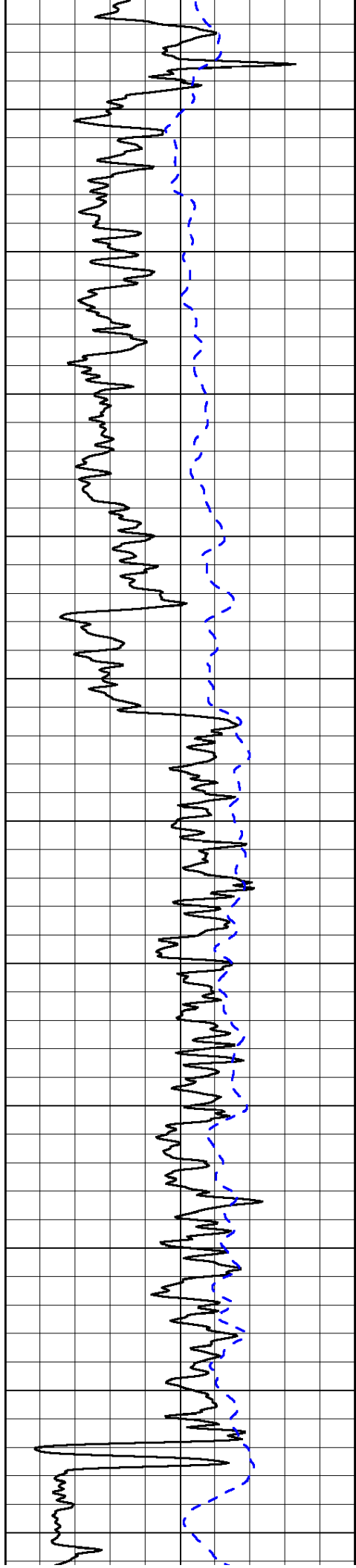
LSPD

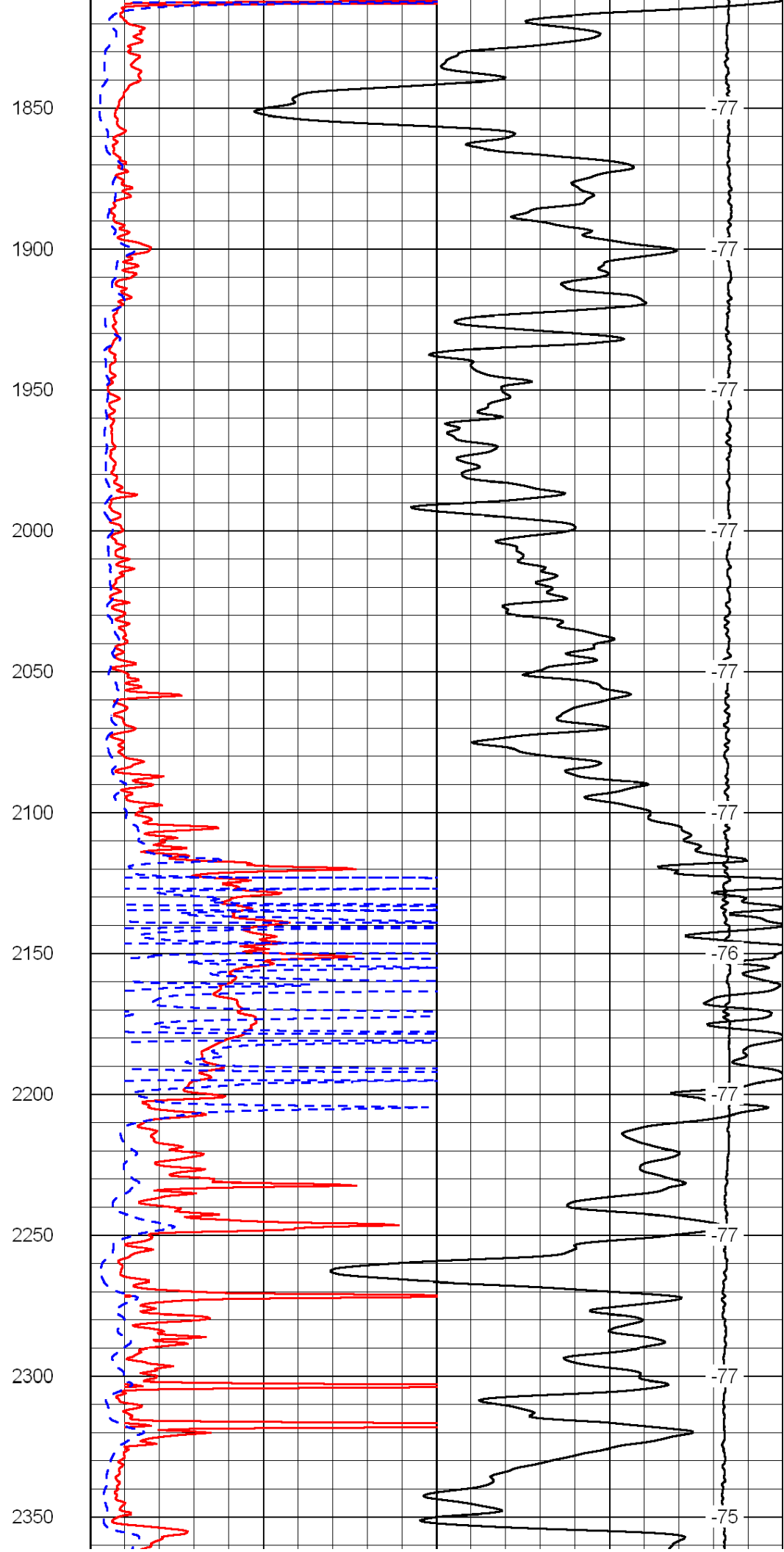
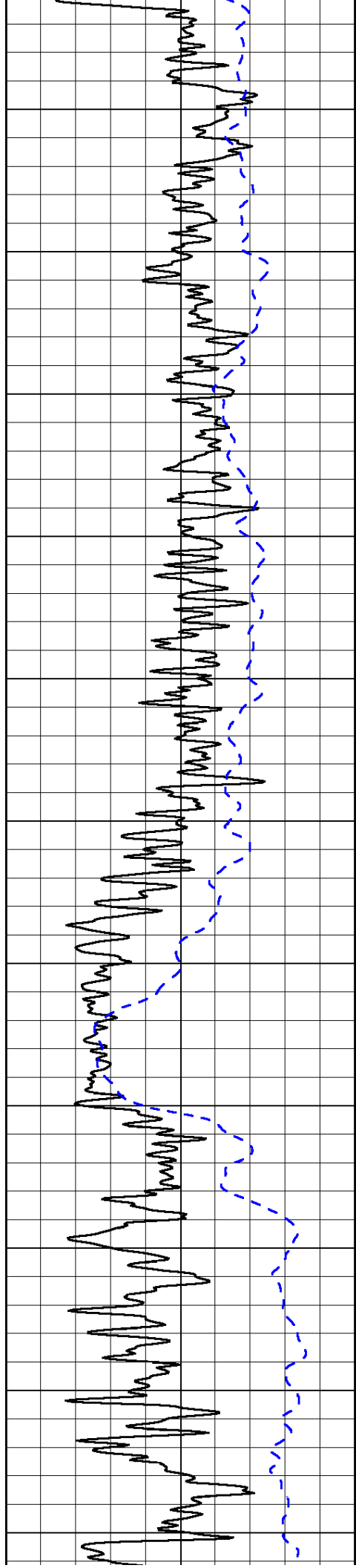
1000	Conductivity	0
15000	Line Tension	0

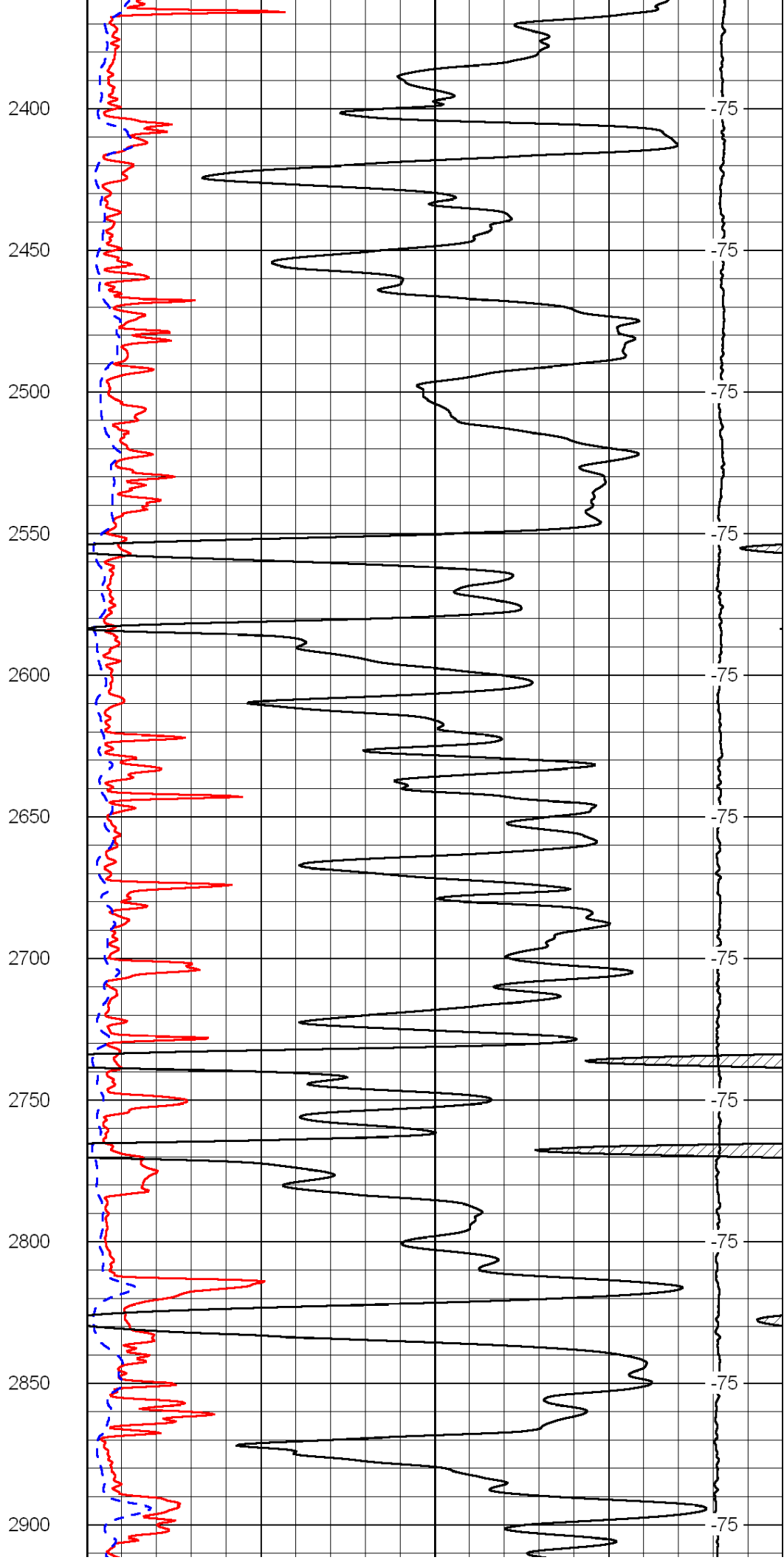
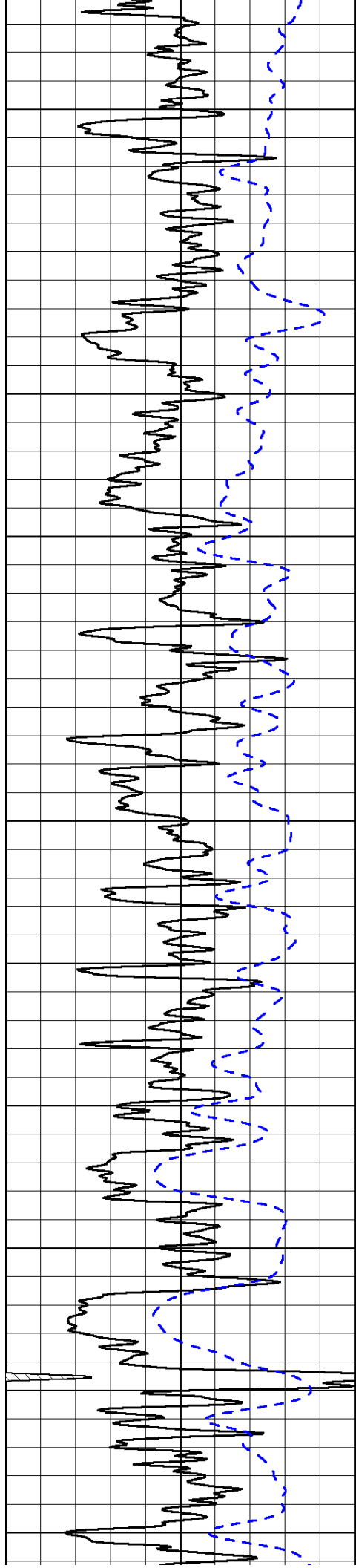
50	Shallow Resistivity	500
50	Deep Resistivity	500

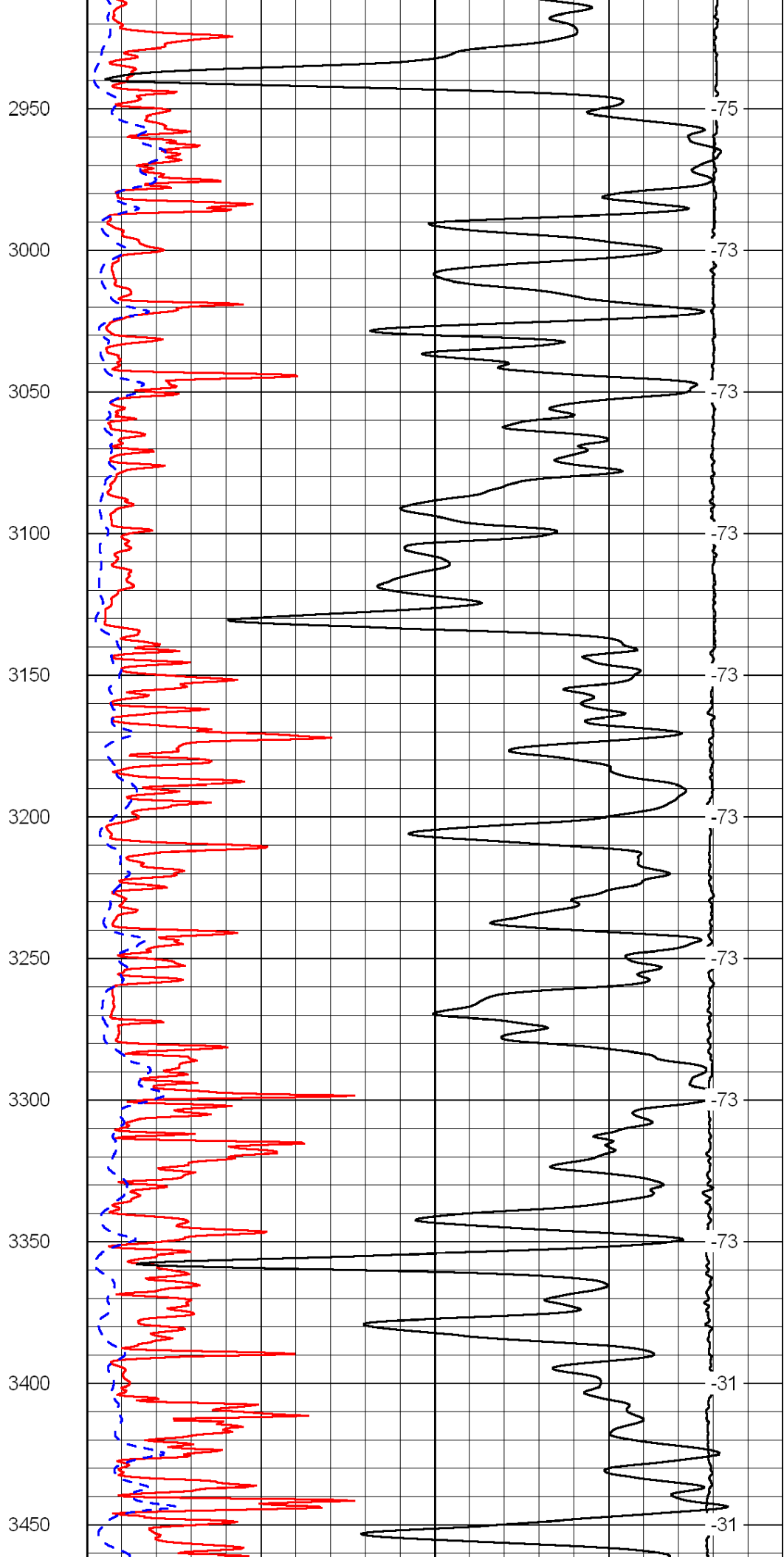
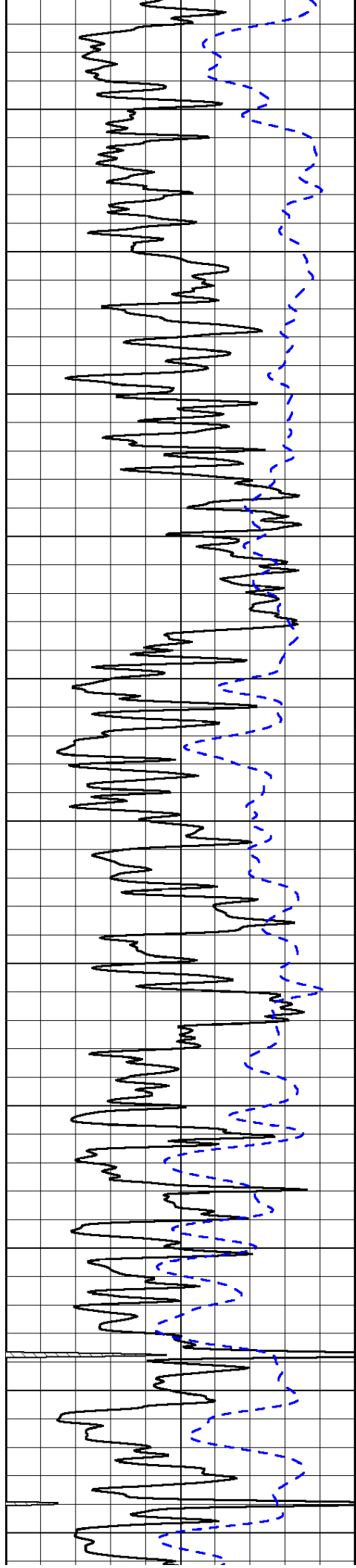


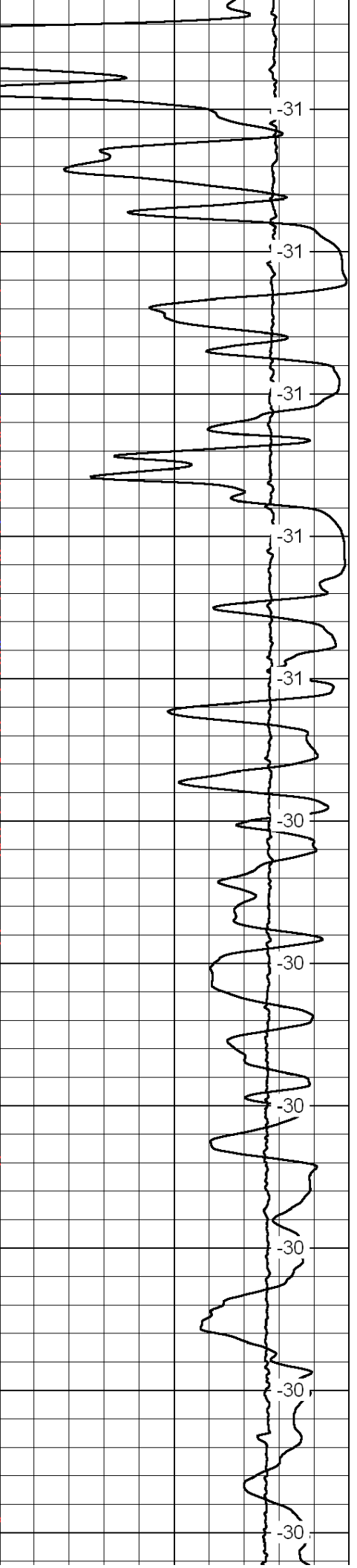
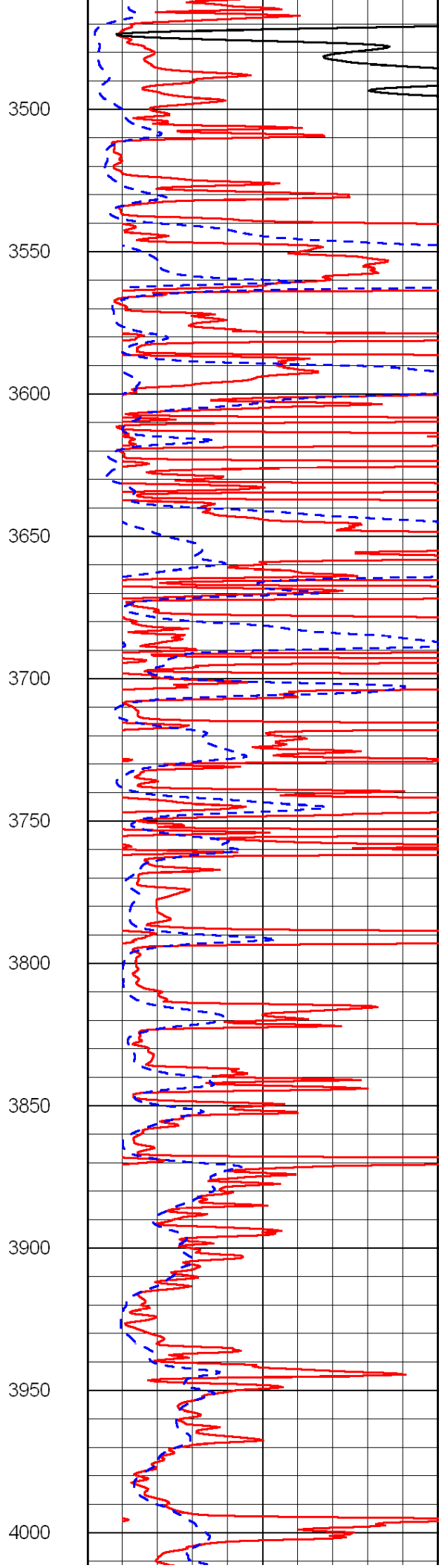
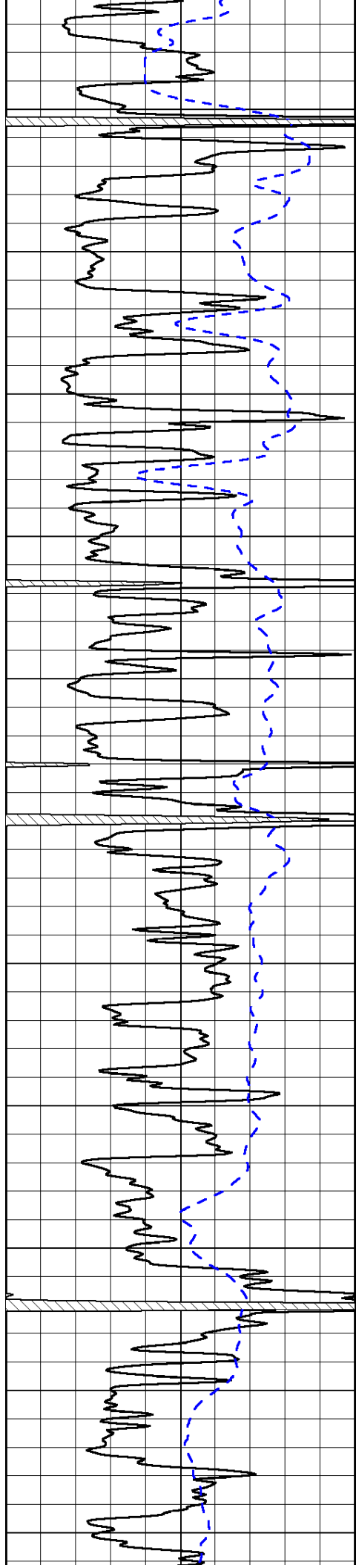


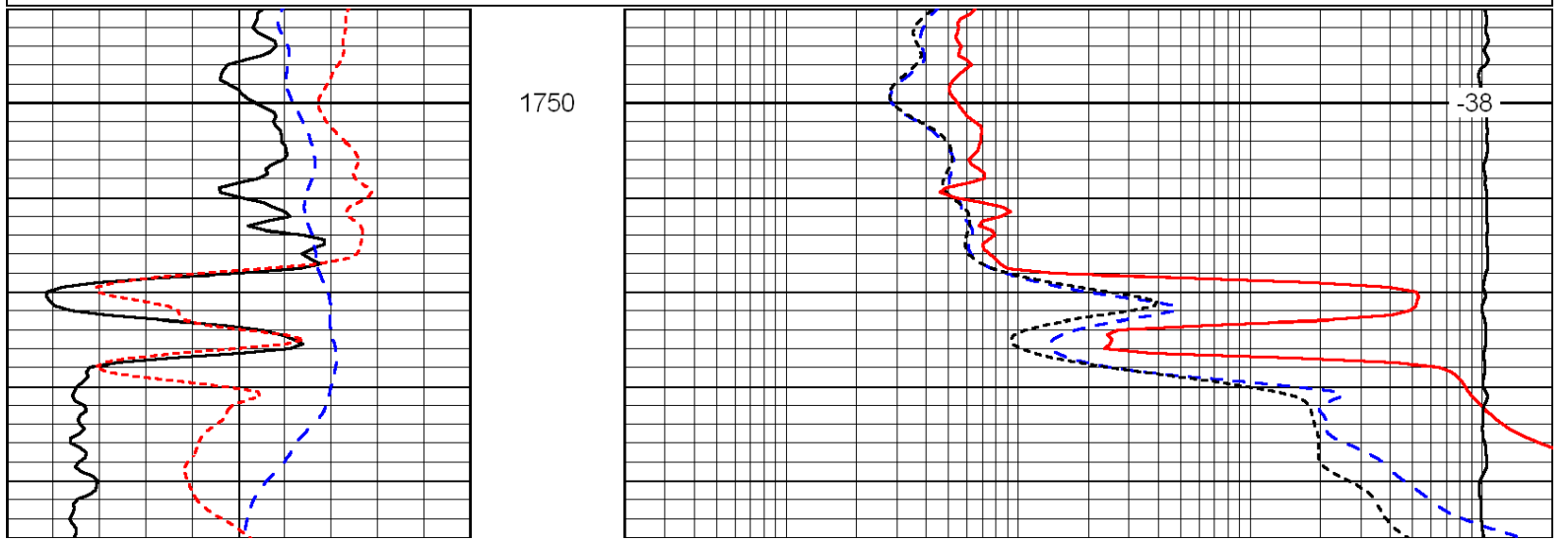
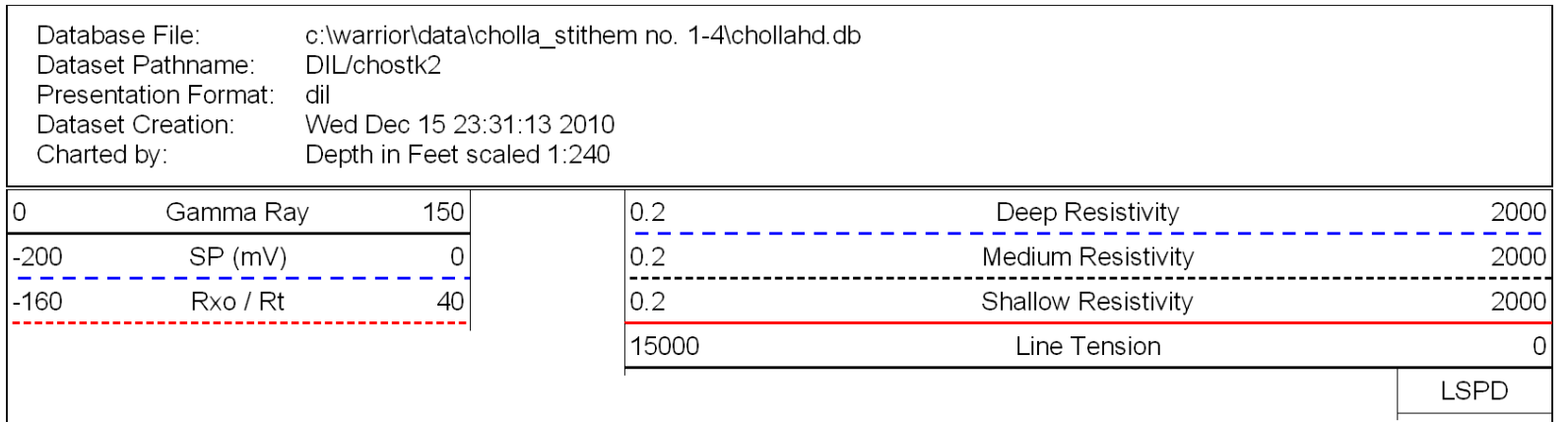
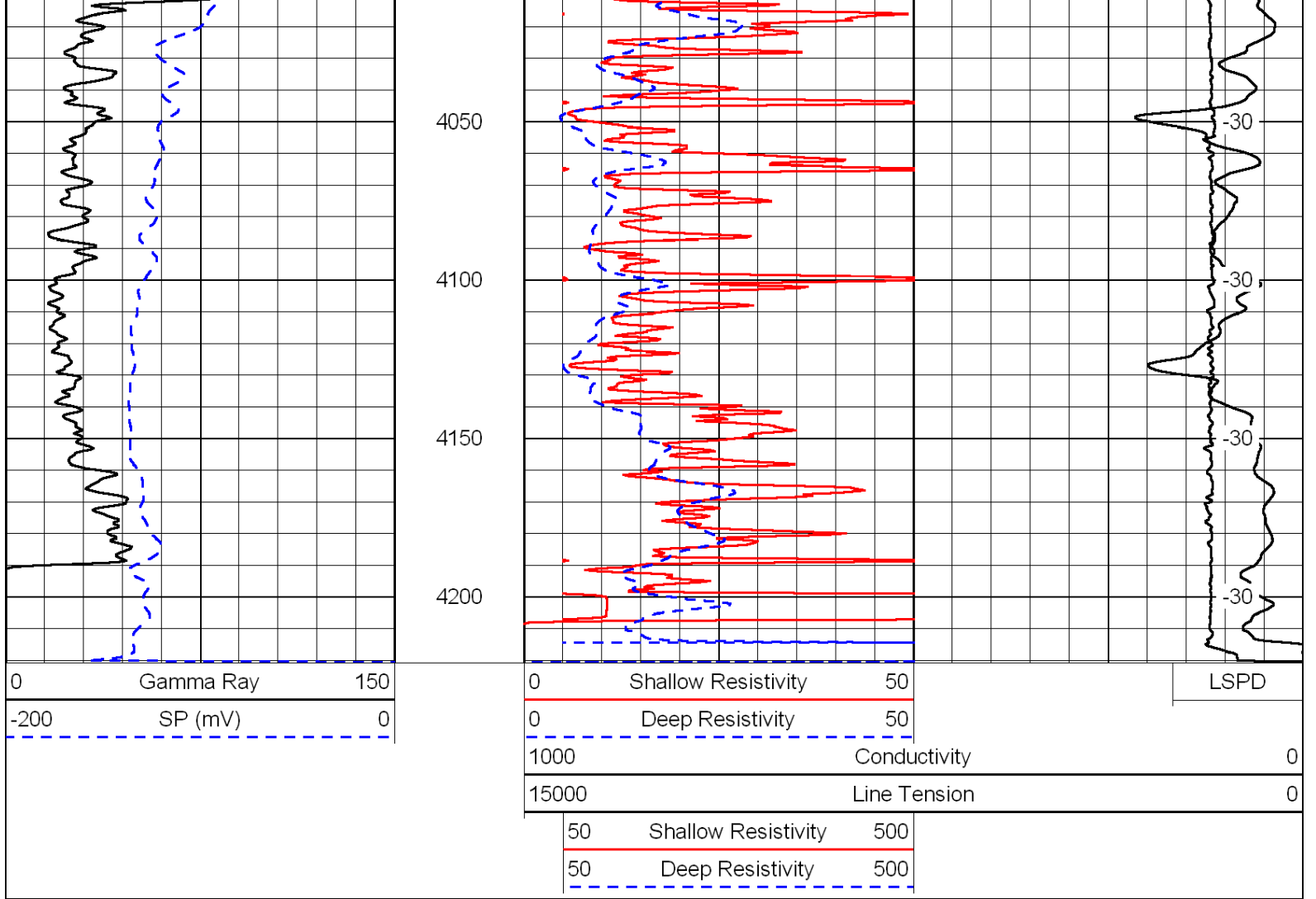


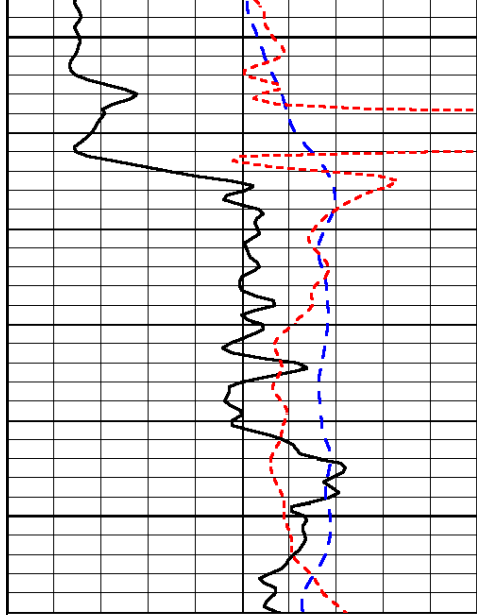








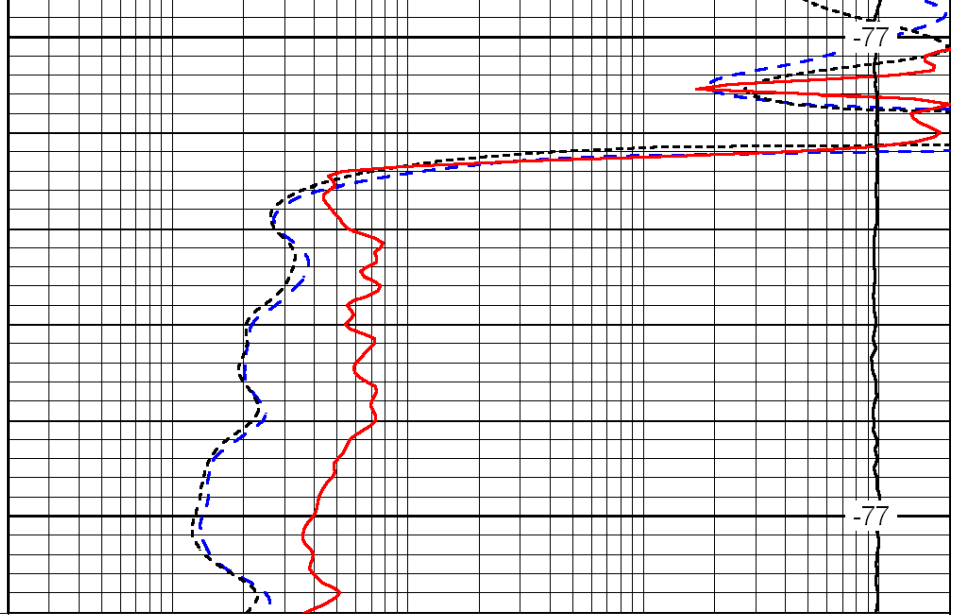




0	Gamma Ray	150
-200	SP (mV)	0
-160	Rxo / Rt	40

1800

1850



0.2	Deep Resistivity	2000
0.2	Medium Resistivity	2000
0.2	Shallow Resistivity	2000
15000	Line Tension	0

-77

-77

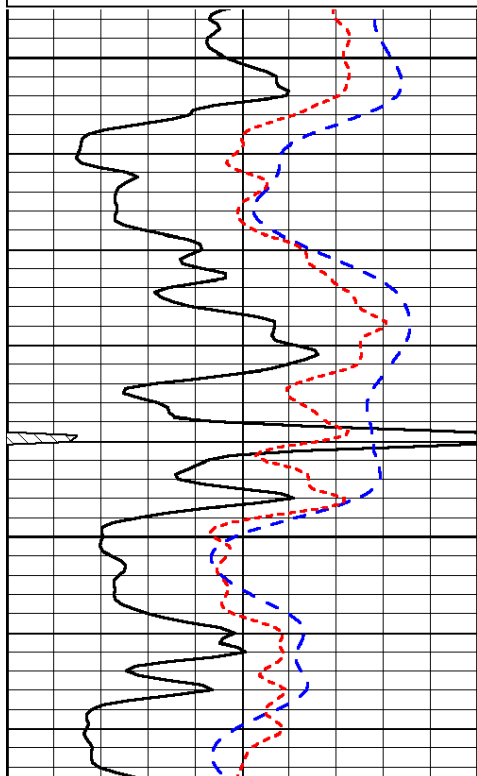
LSPD

Database File: c:\warrior\data\cholla_stithem no. 1-4\chollahd.db
 Dataset Pathname: DIL/chostk2
 Presentation Format: dil
 Dataset Creation: Wed Dec 15 23:31:13 2010
 Charted by: Depth in Feet scaled 1:240

0	Gamma Ray	150
-200	SP (mV)	0
-160	Rxo / Rt	40

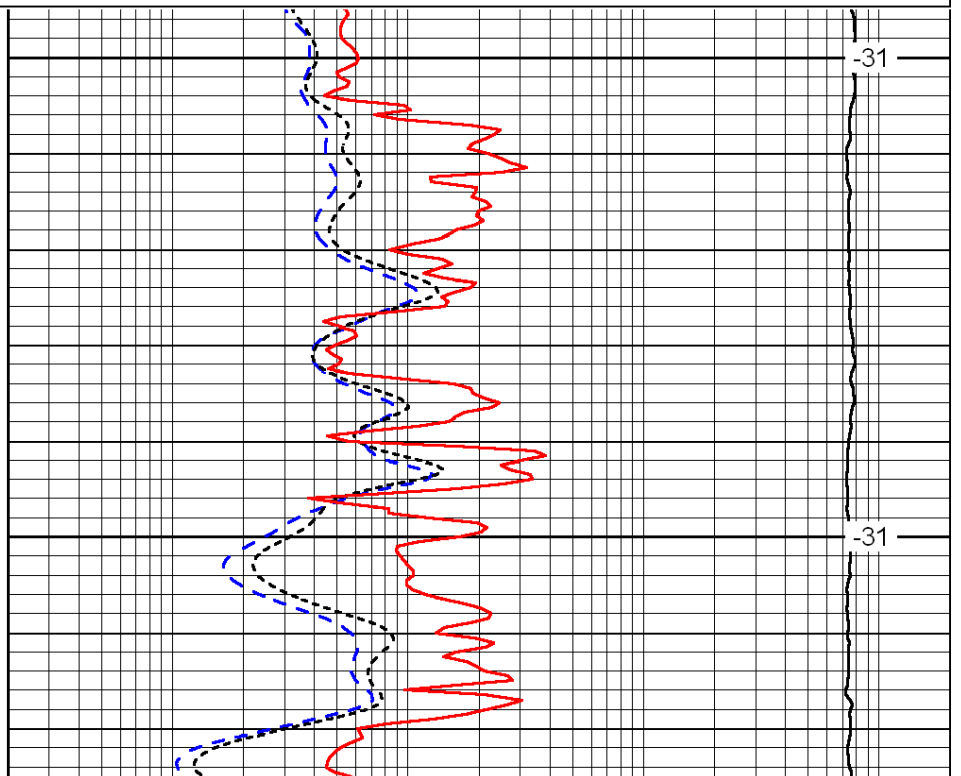
0.2	Deep Resistivity	2000
0.2	Medium Resistivity	2000
0.2	Shallow Resistivity	2000
15000	Line Tension	0

LSPD



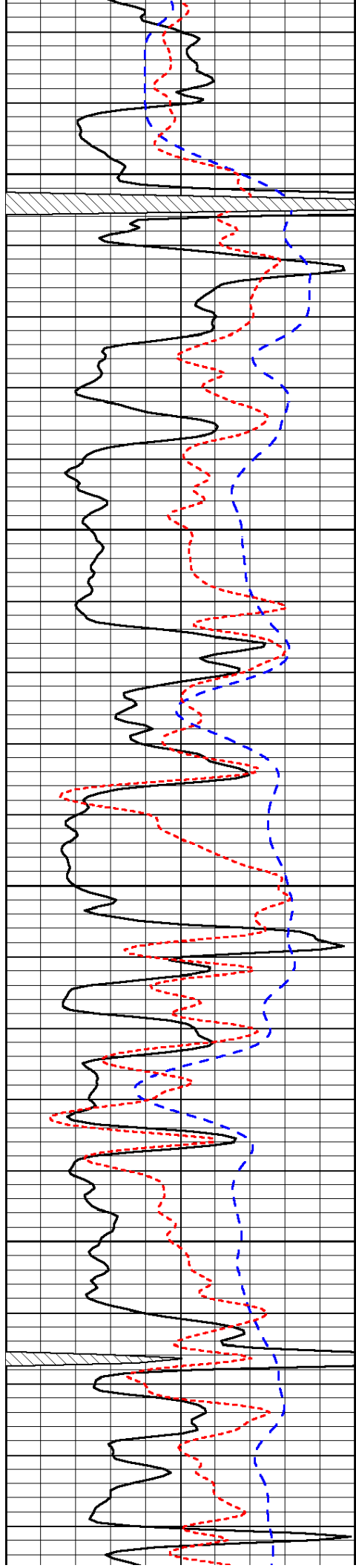
3400

3450



-31

-31

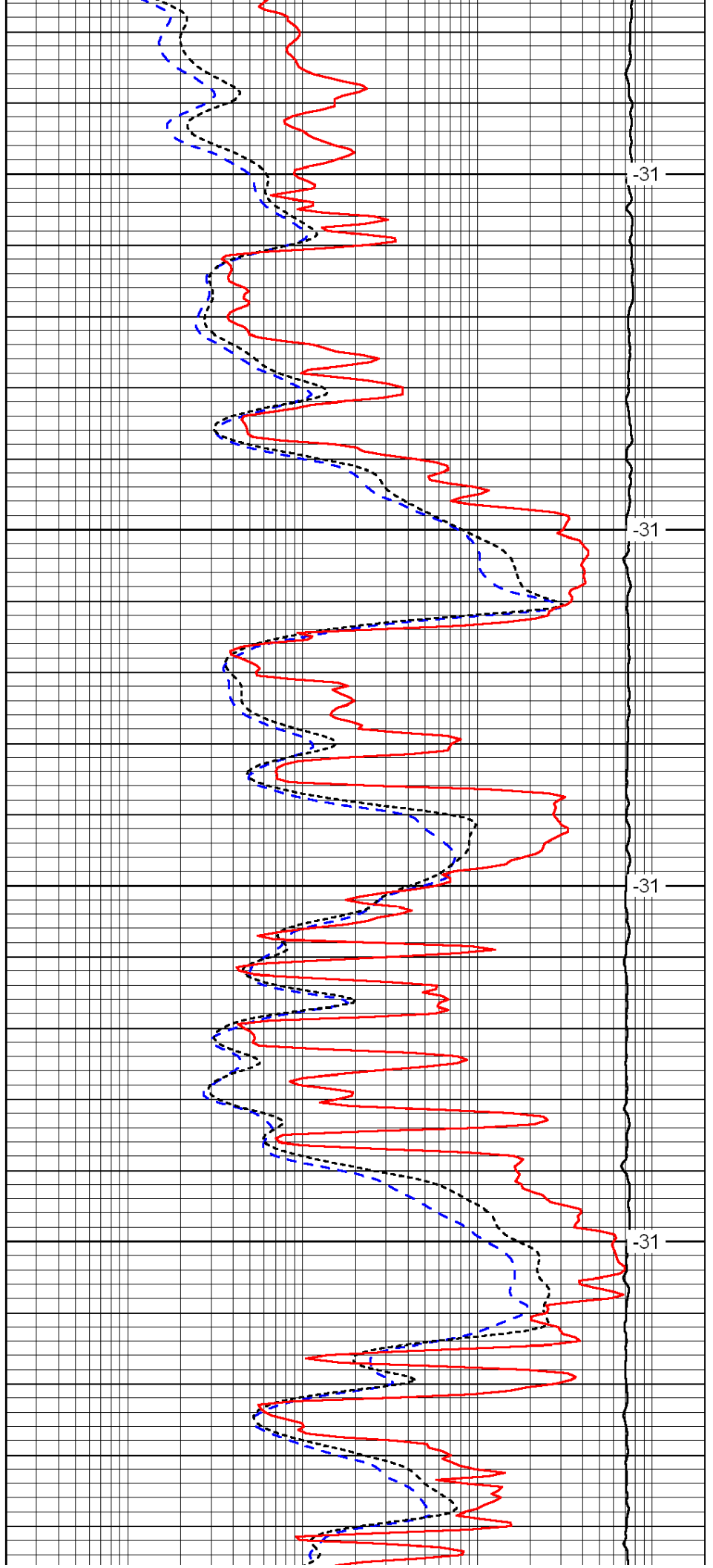


3500

3550

3600

3650

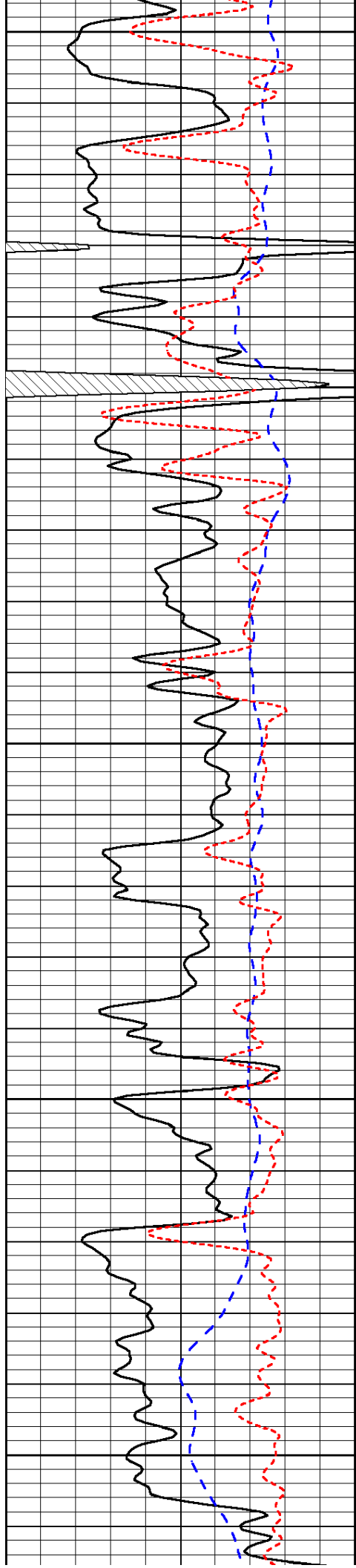


-31

-31

-31

-31



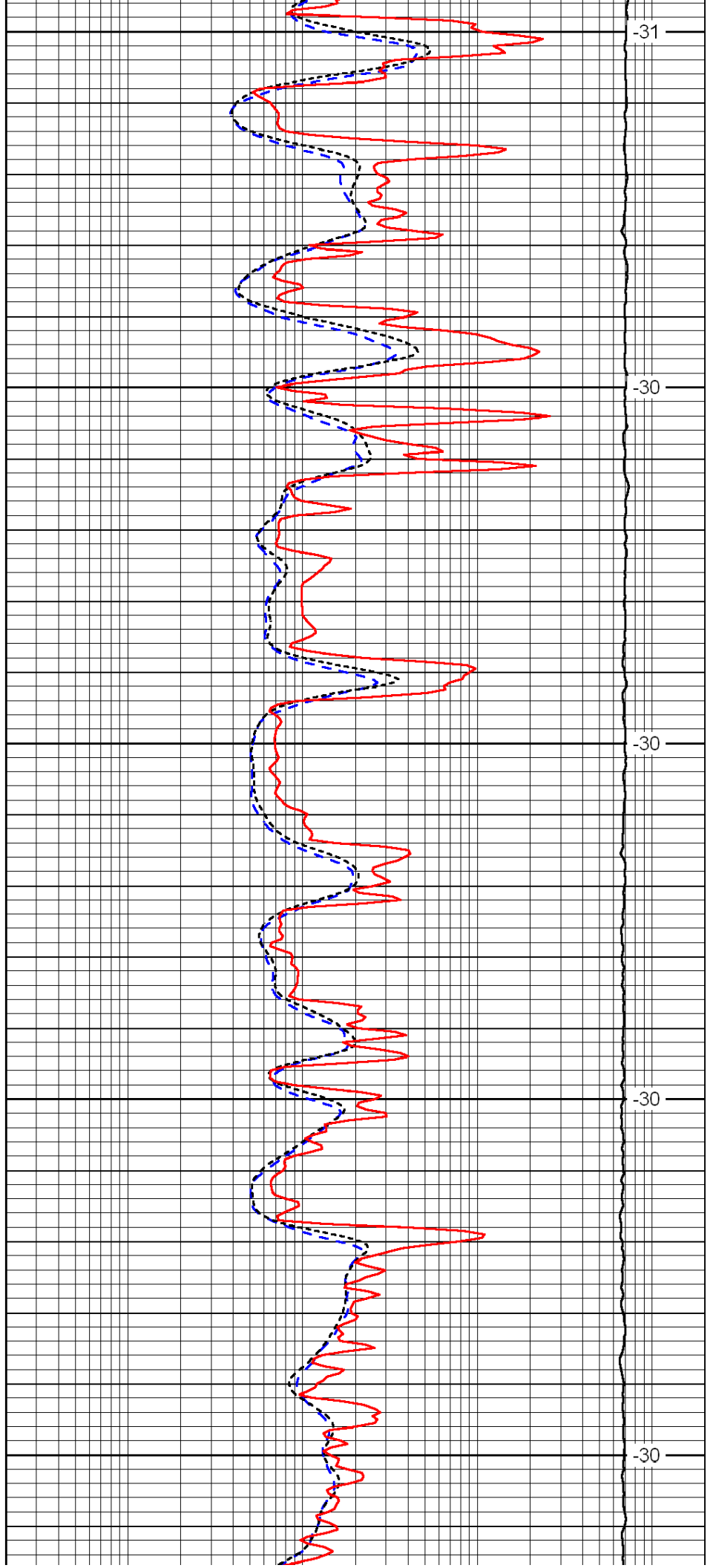
3700

3750

3800

3850

3900



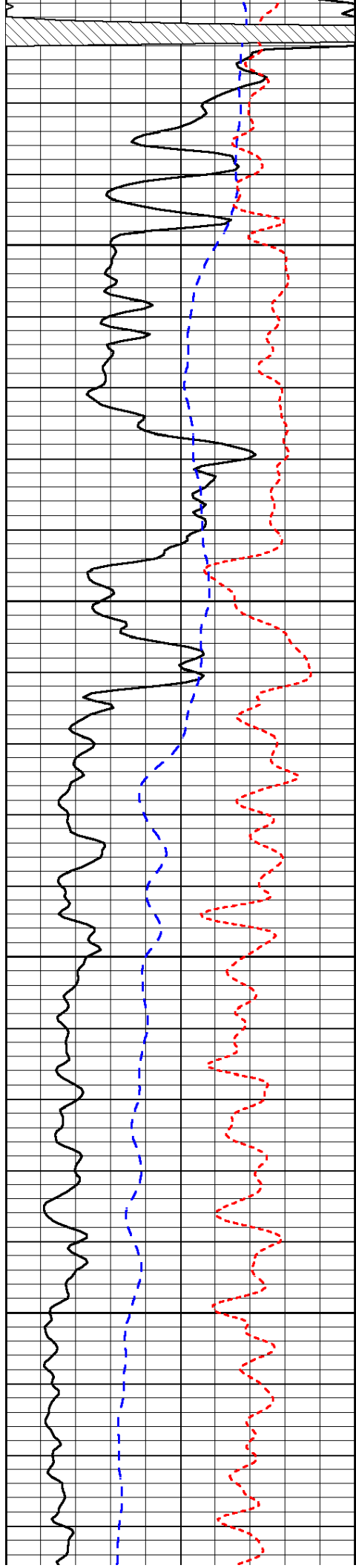
-31

-30

-30

-30

-30

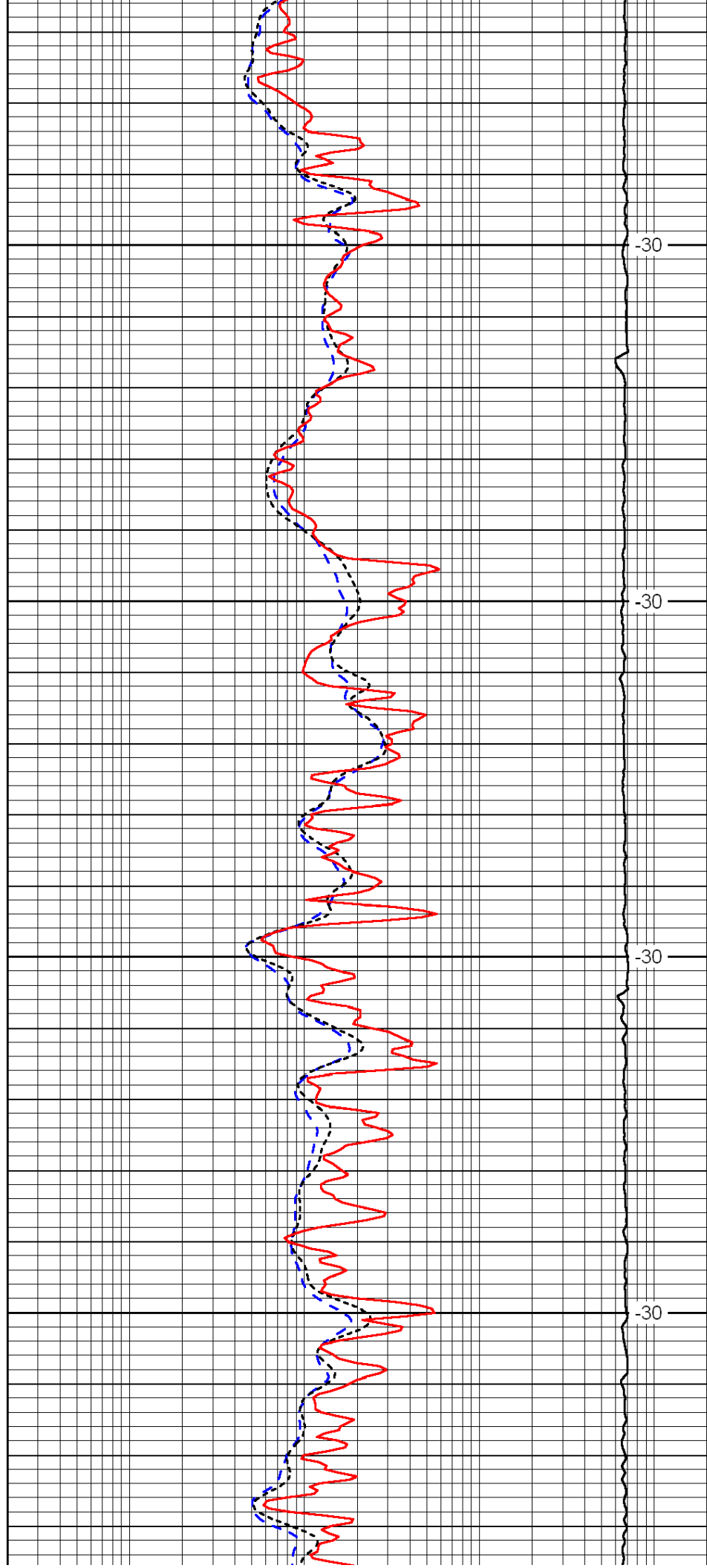


3950

4000

4050

4100

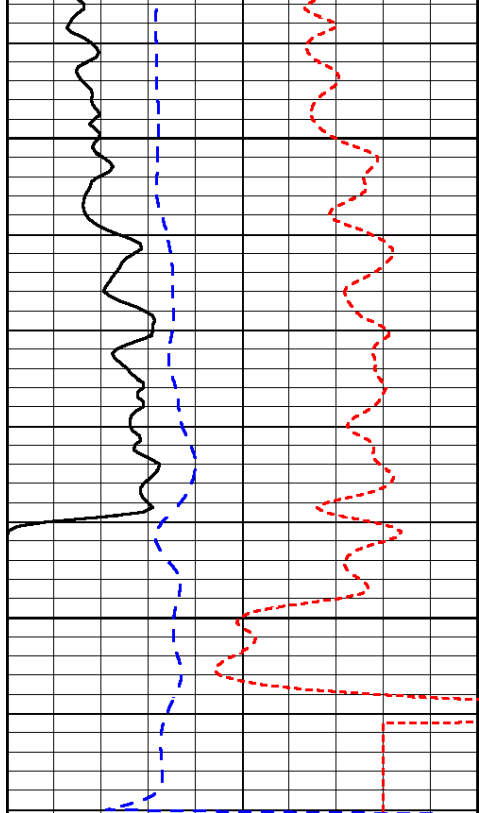


-30

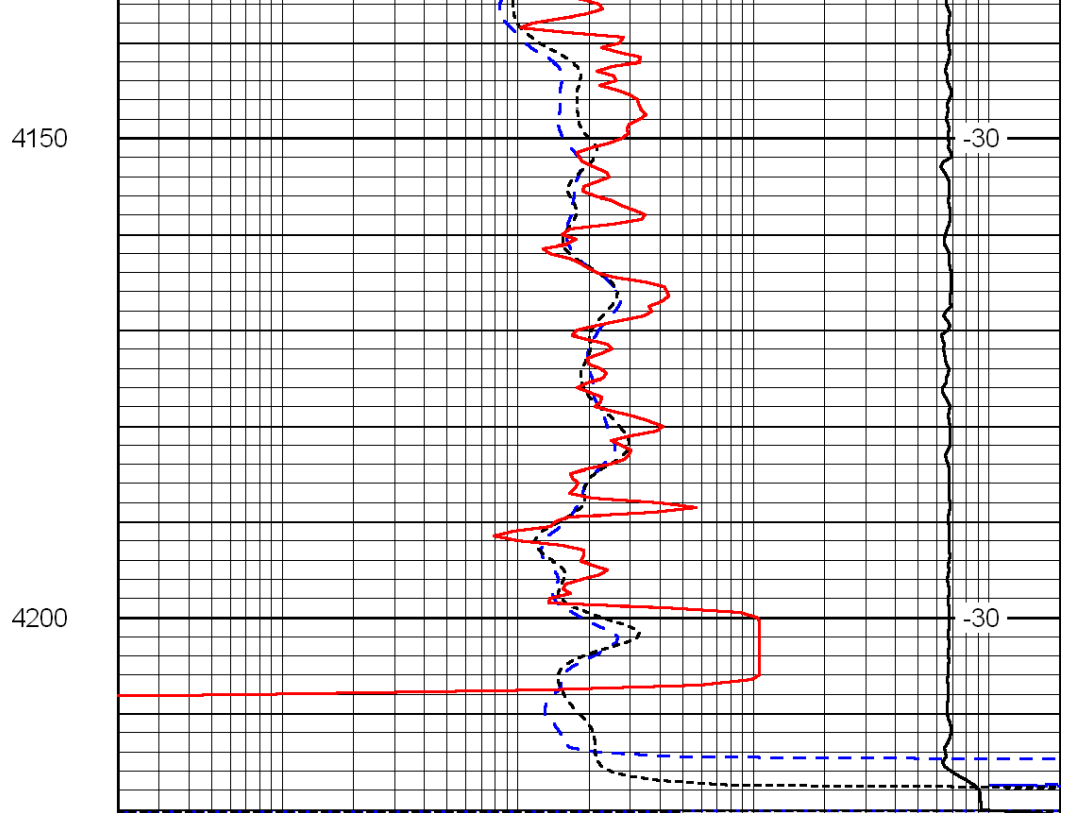
-30

-30

-30



0	Gamma Ray	150
-200	SP (mV)	0
-160	Rxo / Rt	40



0.2	Deep Resistivity	2000
0.2	Medium Resistivity	2000
0.2	Shallow Resistivity	2000
15000	Line Tension	0

LSPD