



Microresistivity Log

DIGITAL LOG (785) 625-3858

API No.	15-039-20,431-00-01		
Company	Cholla Production, LLC.		
Well	Kyte-Jording No. 2-14		
Field	Jording		
County	Decatur	State	Kansas
Location	2080' FNL & 2310' FWL		
Sec:	14	Twp:	2 S
		Rge:	30 W
Permanent Datum	Ground Level	Elevation	2796
Log Measured From	Kelly Bushing	5	Ft. Above Perm. Datum
Drilling Measured From	Kelly Bushing		
Date	12/9/2010	Elevation	K.B. 2801
			D.F. 2796
			G.L. 2796

Run Number	Two
Depth Driller	4040
Depth Logger	4040
Bottom Logged Interval	4039
Top Log Interval	3600
Casing Driller	8.625 @ 259
Casing Logger	256
Bit Size	7.875
Type Fluid in Hole	Chemical
Salinity, ppm CL	9.200
Density / Viscosity	9.0 52
pH / Fluid Loss	7.0 16.8
Source of Sample	Flowline
Rm @ Meas. Temp	.25 @ 60
Rmf @ Meas. Temp	.19 @ 60
Rmc @ Meas. Temp	.34 @ 60
Source of Rmf / Rmc	Charts
Rm @ BHT	.13 @ 118
Operating Rig Time	4 Hours
Max Rec. Temp. F	118
Equipment Number	4
Location	Hays
Recorded By	K. Bange
Witnessed By	Bill Goff

<<< Fold Here >>>

All interpretations are opinions based on inferences from electrical or other measurements and we cannot and do not guarantee the accuracy or correctness of any interpretation, and we shall not, except in the case of gross or willful negligence on our part, be liable or responsible for any loss, costs, damages, or expenses incurred or sustained by anyone resulting from any interpretation made by any of our officers, agents or employees. These interpretations are also subject to our general terms and conditions set out in our current Price Schedule.

Comments

Thank you for using Log-Tech, Inc.
(785) 625-3858

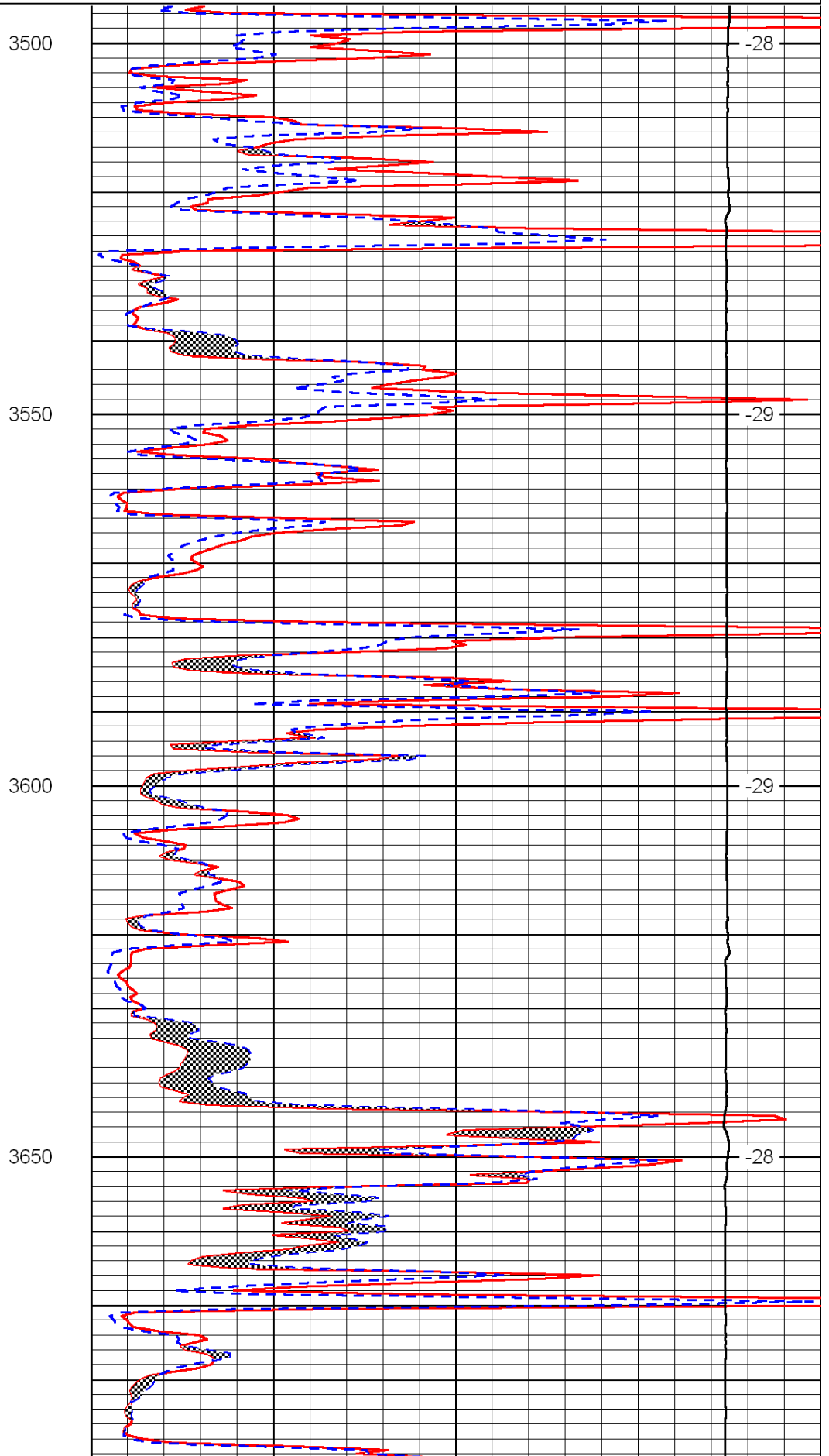
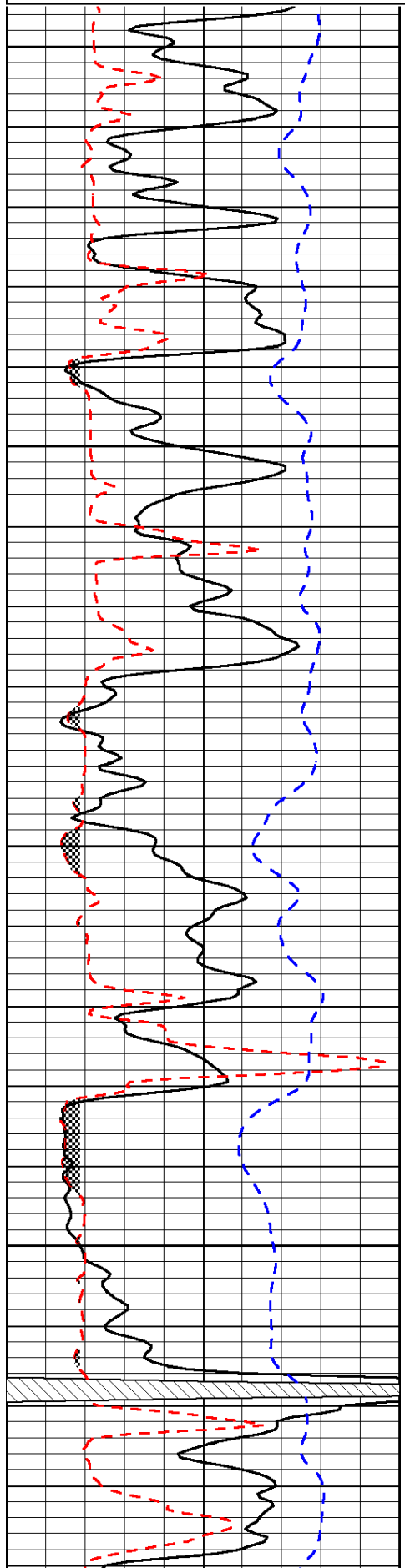
Oberlin, 5 W, 3 N, 1 1/2 W, N into (follow lease rd)

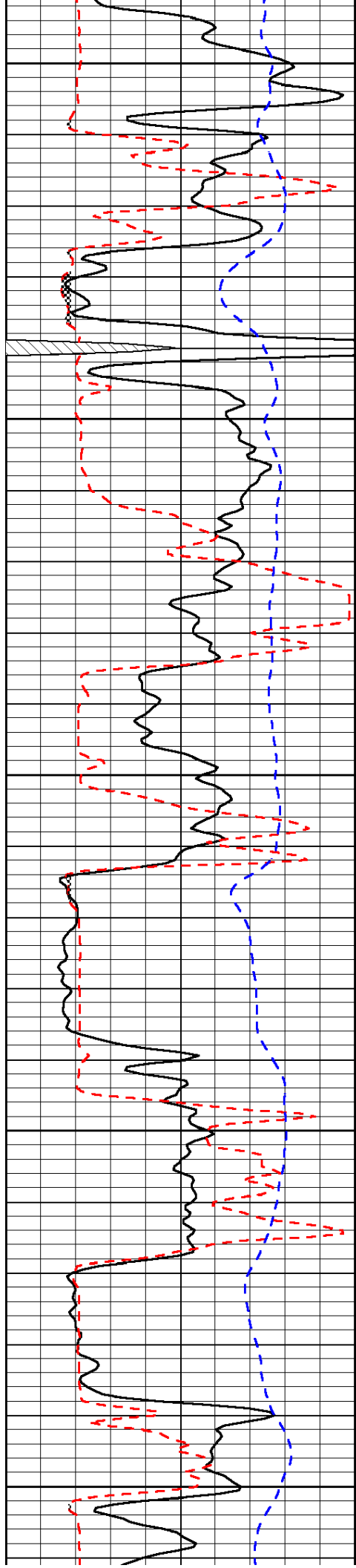
Database File: c:\warrior\data\cholla_kyte-jording no. 2-14\cholla120910hd.db
 Dataset Pathname: dil\chollastk
 Presentation Format: micro
 Dataset Creation: Thu Dec 09 14:58:22 2010
 Charted by: Depth in Feet scaled 1:240

0	Gamma Ray	150
6	Micro Log Caliper (GAPI)	16
-200	SP (mV)	0

0	Micro Inverse 1 X 1	40
0	Micro Normal 2"	40
15000	Line Weight	0

LSPD





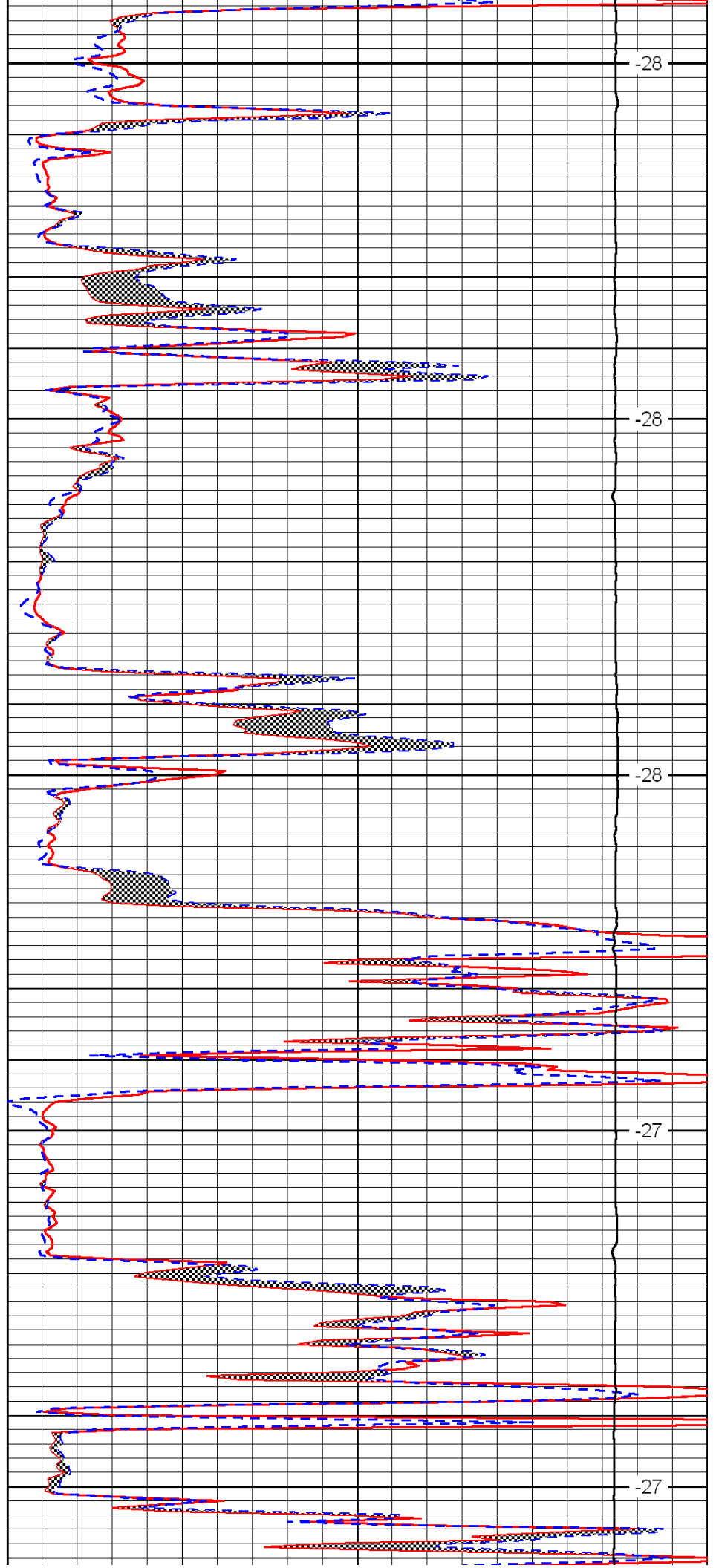
3700

3750

3800

3850

3900



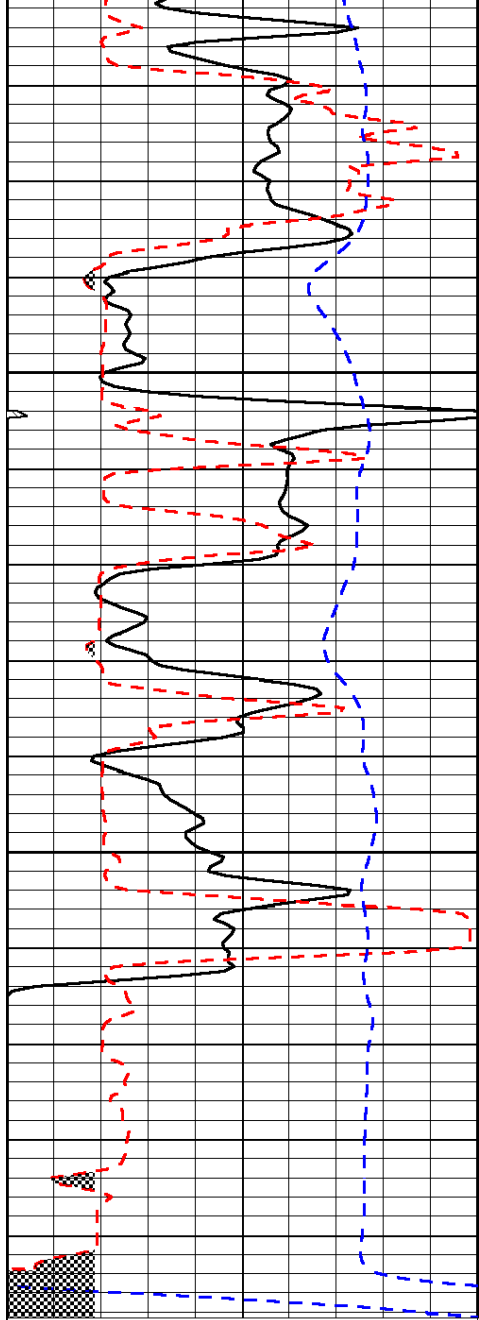
-28

-28

-28

-27

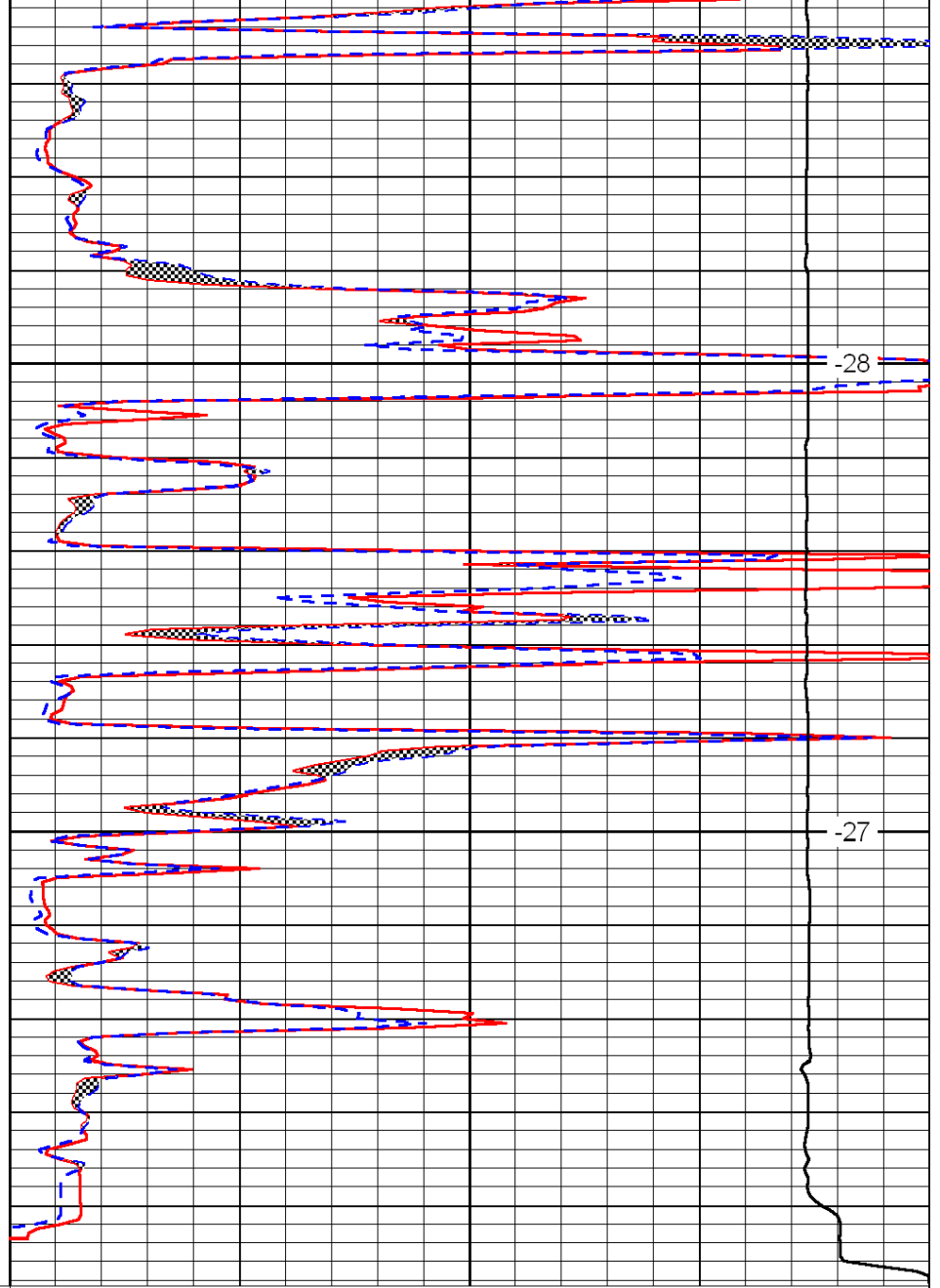
-27



0	Gamma Ray	150
6	Micro Log Caliper (GAPI)	16
-200	SP (mV)	0

3950

4000



0	Micro Inverse 1 X 1	40
0	Micro Normal 2'	40
15000	Line Weight	0

-28

-27

LSPD