



Dual Induction Log

DIGITAL LOG (785) 625-3858

API No.	15-039-20,431-00-01		
Company	Cholla Production, LLC.		
Well	Kyte-Jording No. 2-14		
Field	Jording		
County	Decatur	State	Kansas
Location	2080' FNL & 2310' FWL		
Sec:	14	Twp:	2 S
		Rge:	30 W
Permanent Datum	Ground Level	Elevation	2796
Log Measured From	Kelly Bushing	5	Ft. Above Perm. Datum
Drilling Measured From	Kelly Bushing		
		Other Services	CNL/CDL MEL
		Elevation	K.B. 2801 D.F. 2796 G.L. 2796

Date	12/9/2010	
Run Number	One	
Depth Driller	4040	
Depth Logger	4040	
Bottom Logged Interval	4039	
Top Log Interval	250	
Casing Driller	8.625 @ 259	
Casing Logger	256	
Bit Size	7.875	
Type Fluid in Hole	Chemical	
Salinity, ppm CL	9.200	
Density / Viscosity	9.0	52
pH / Fluid Loss	7.0	16.8
Source of Sample	Flowline	
Rm @ Meas. Temp	.25	@ 60
Rmf @ Meas. Temp	.19	@ 60
Rmc @ Meas. Temp	.34	@ 60
Source of Rmf / Rmc	Charts	
Rm @ BHT	.13	@ 118
Operating Rig Time	4 Hours	
Max Rec. Temp. F	118	
Equipment Number	4	
Location	Hays	
Recorded By	K. Bange	
Witnessed By	Bill Goff	

<<< Fold Here >>>

All interpretations are opinions based on inferences from electrical or other measurements and we cannot and do not guarantee the accuracy or correctness of any interpretation, and we shall not, except in the case of gross or willful negligence on our part, be liable or responsible for any loss, costs, damages, or expenses incurred or sustained by anyone resulting from any interpretation made by any of our officers, agents or employees. These interpretations are also subject to our general terms and conditions set out in our current Price Schedule.

Comments

Thank you for using Log-Tech, Inc.
(785) 625-3858

Oberlin, 5 W, 3 N, 1 1/2 W, N into (follow lease rd)

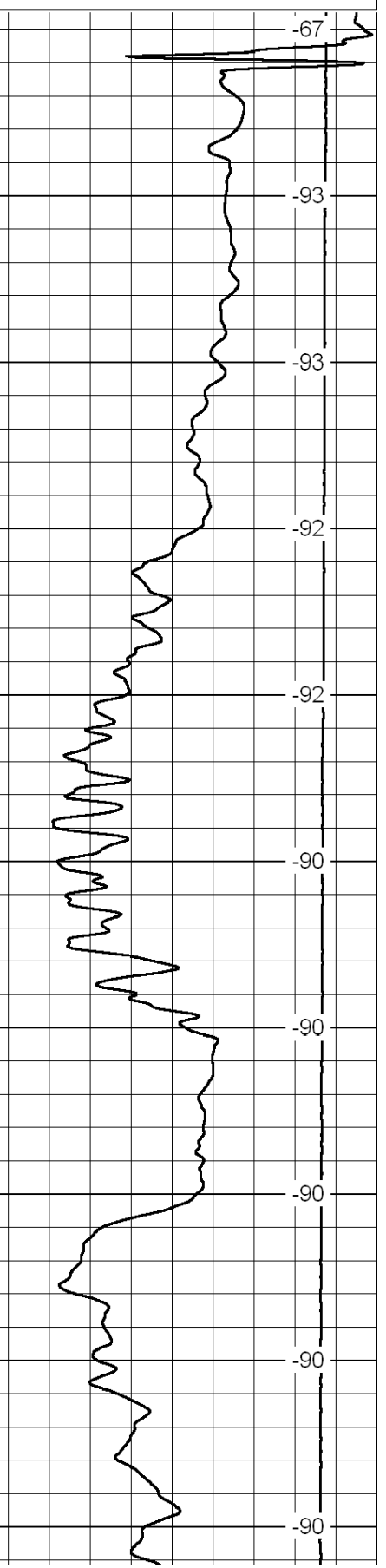
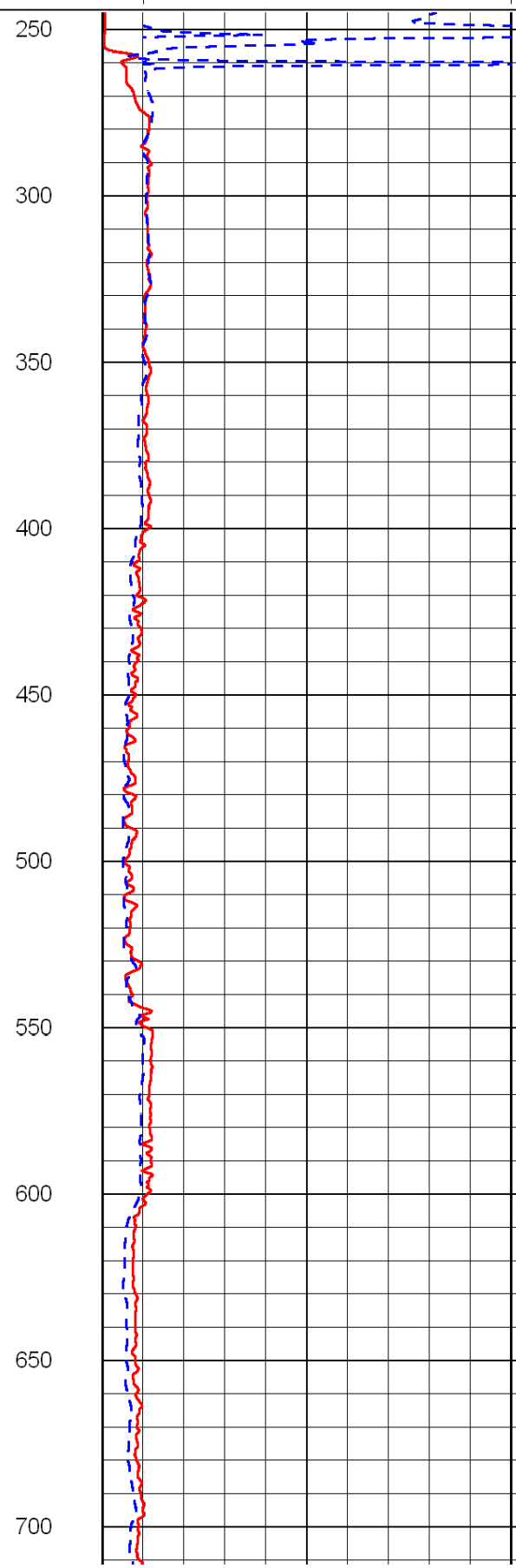
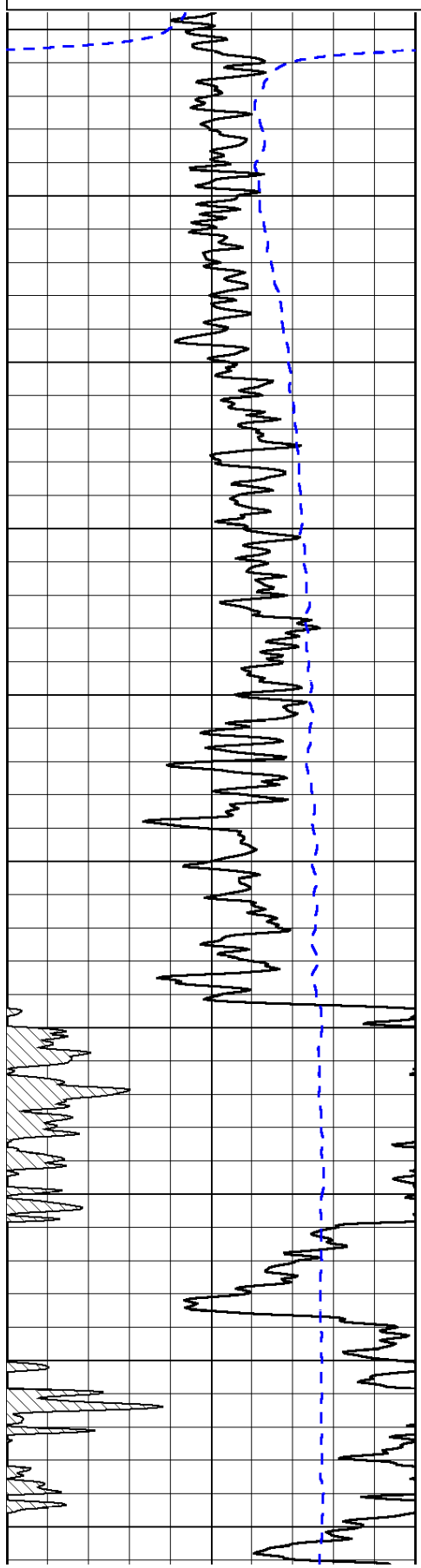
0	Gamma Ray	150
-200	SP (mV)	0

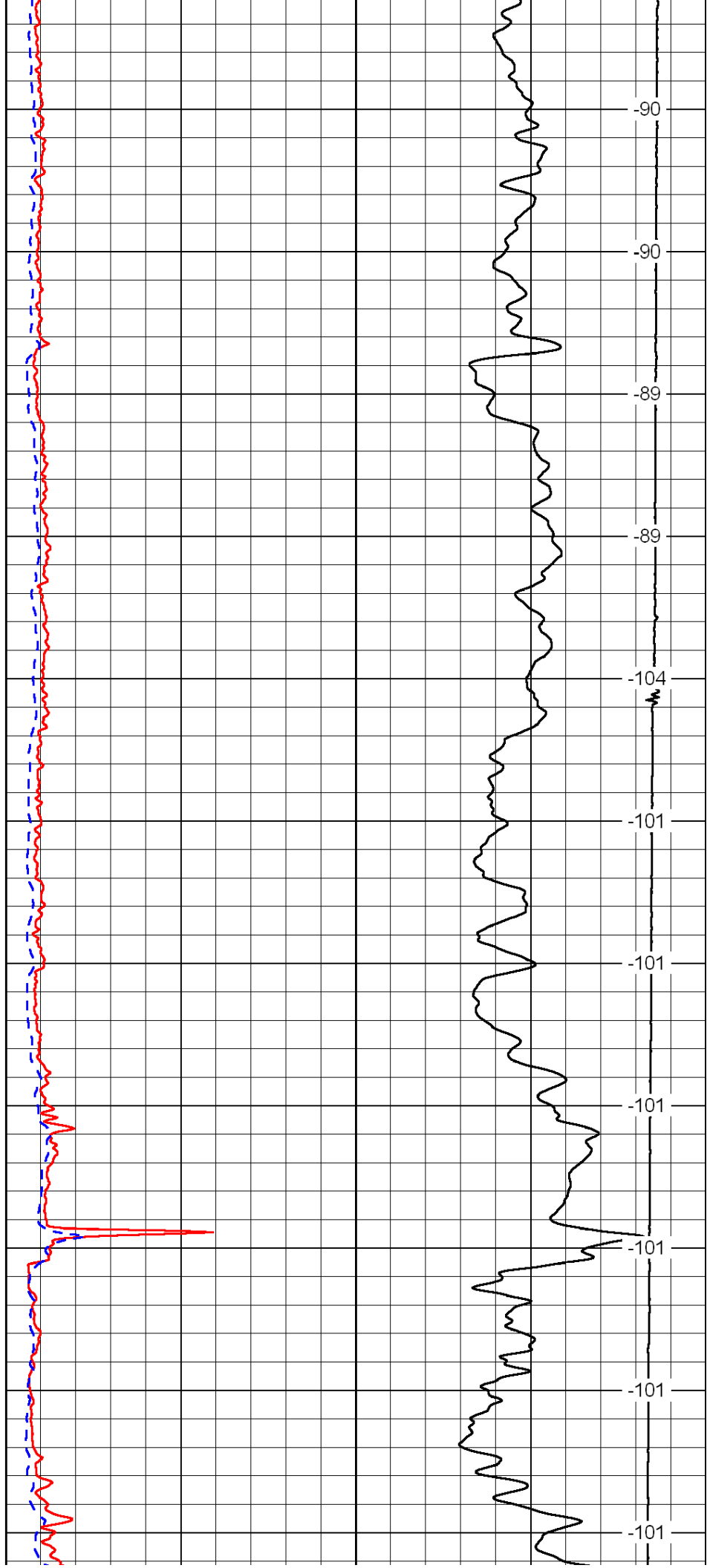
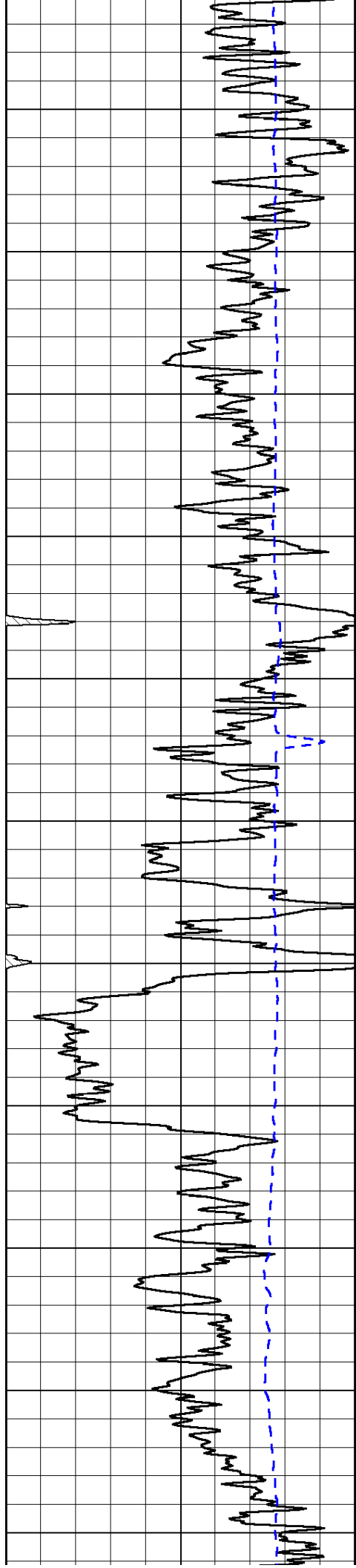
0	Shallow Resistivity	50
0	Deep Resistivity	50

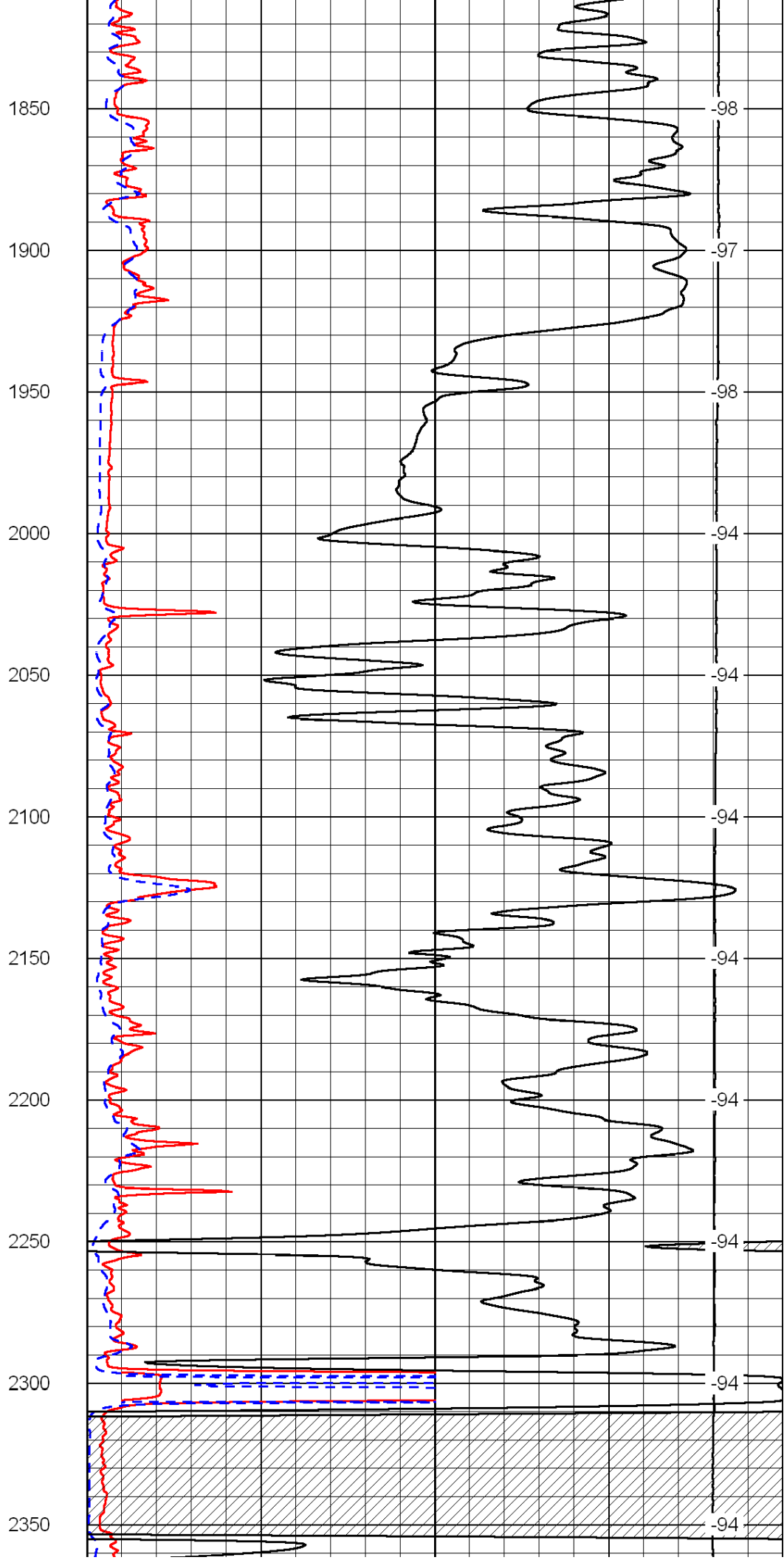
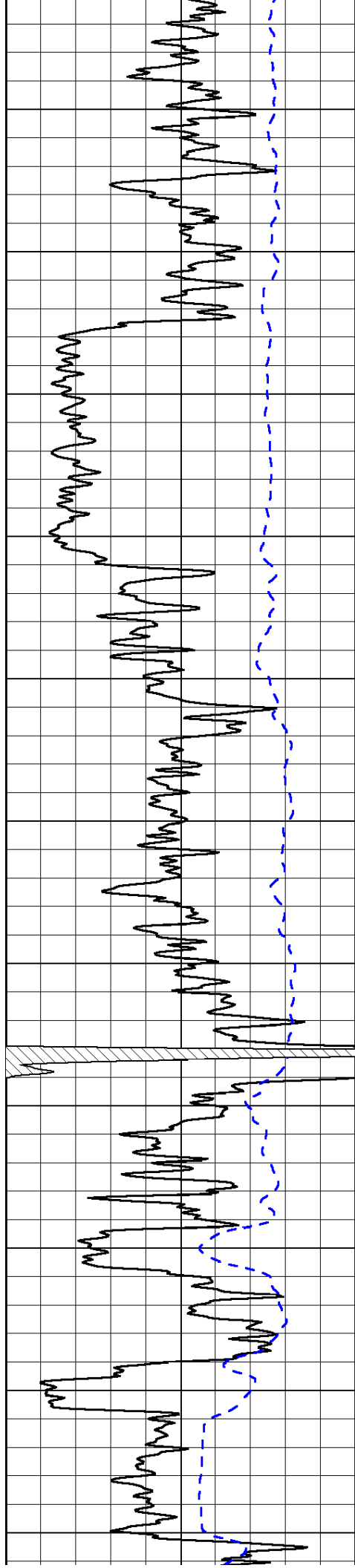
LSPD

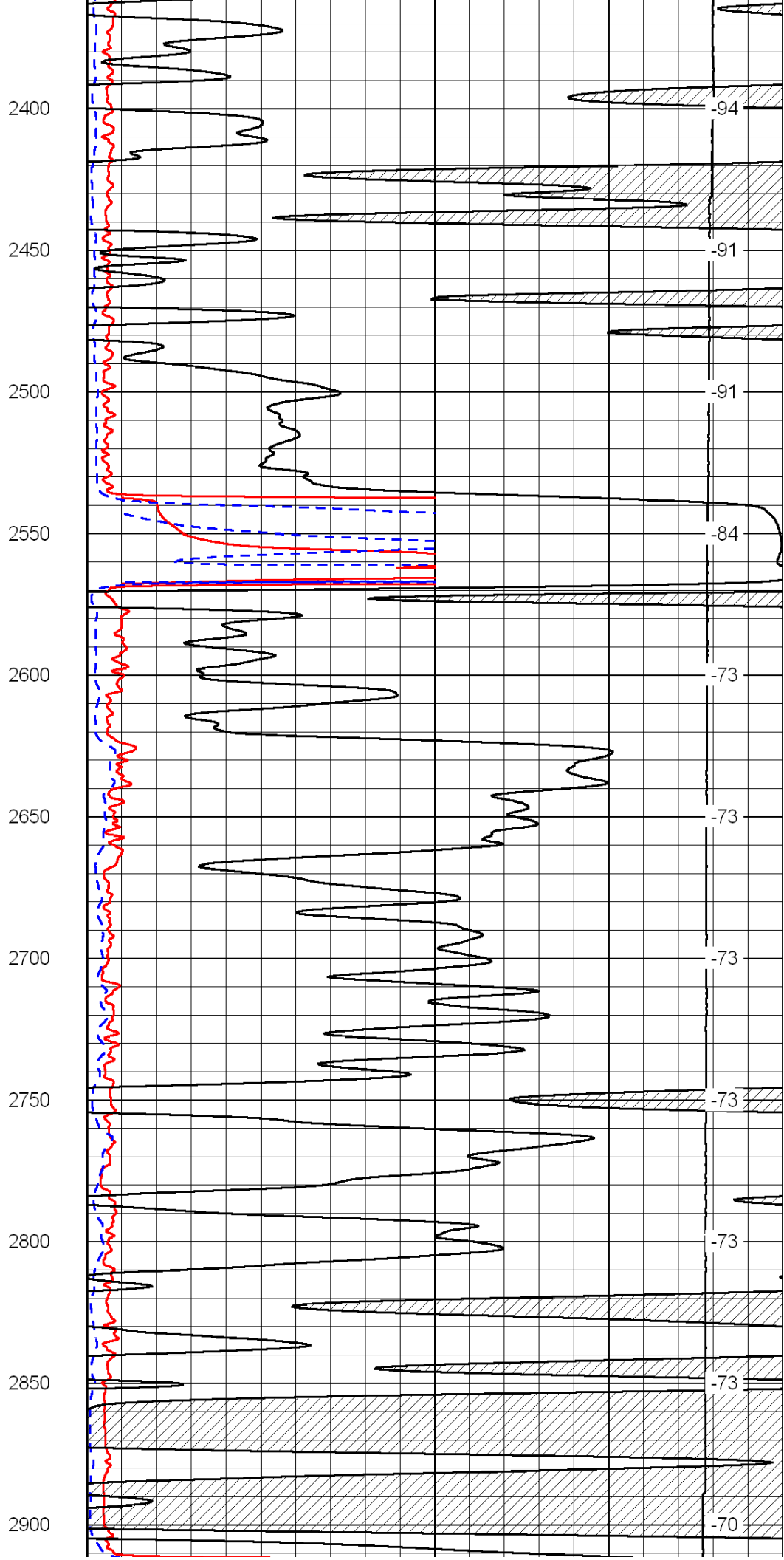
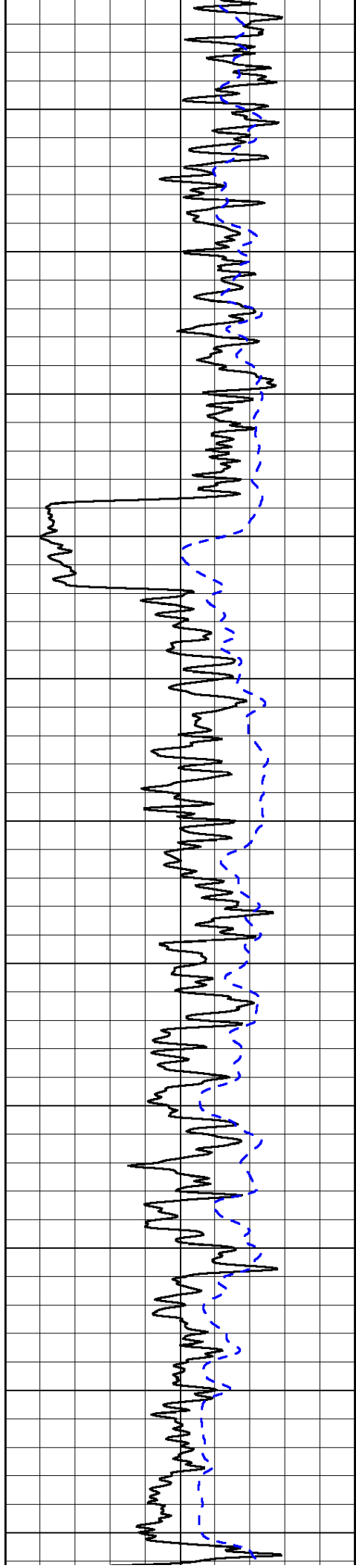
1000	Conductivity	0
15000	Line Tension	0

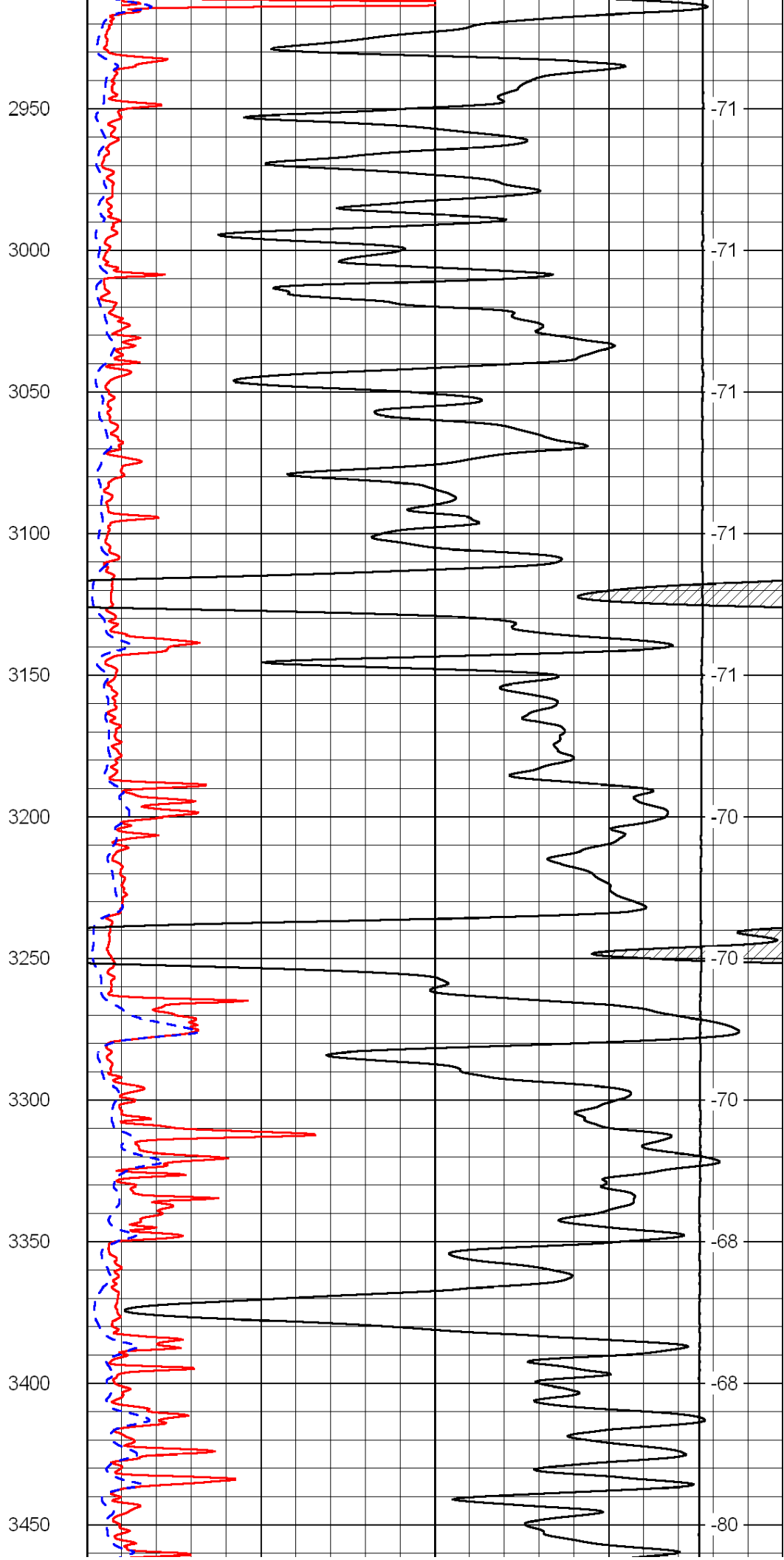
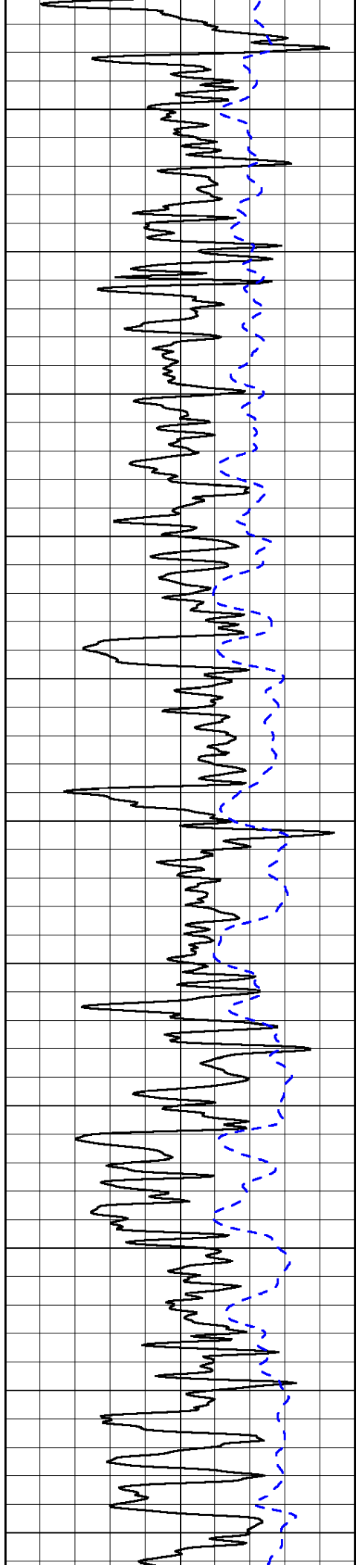
50	Shallow Resistivity	500
50	Deep Resistivity	500

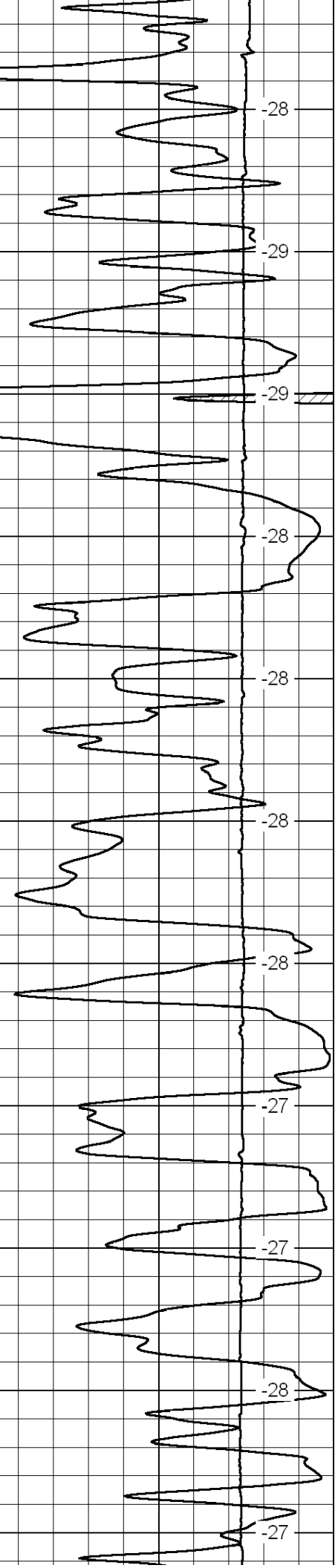
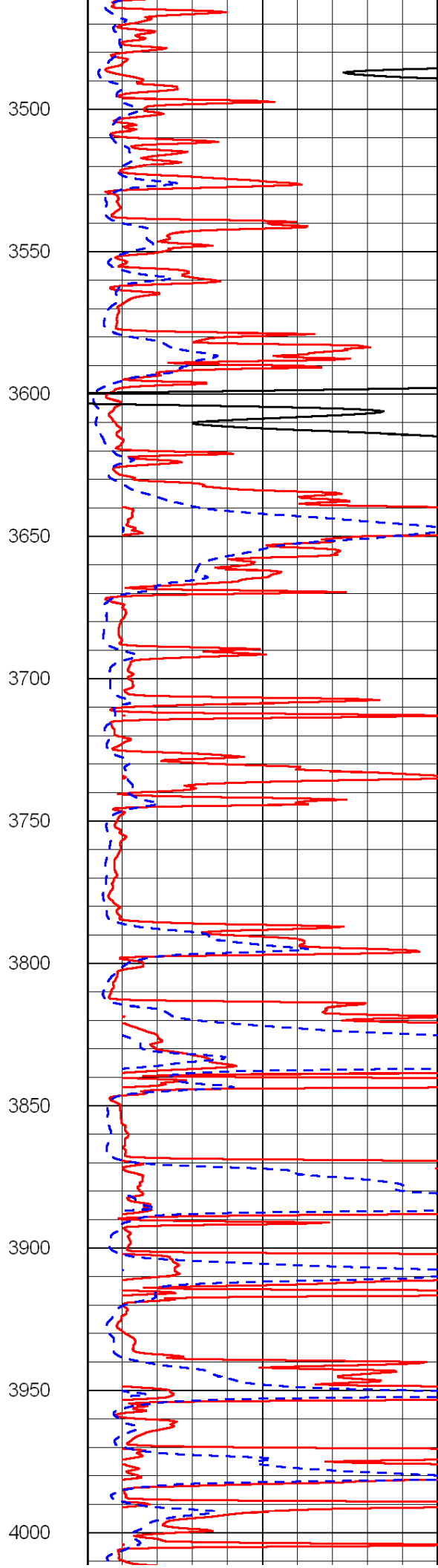
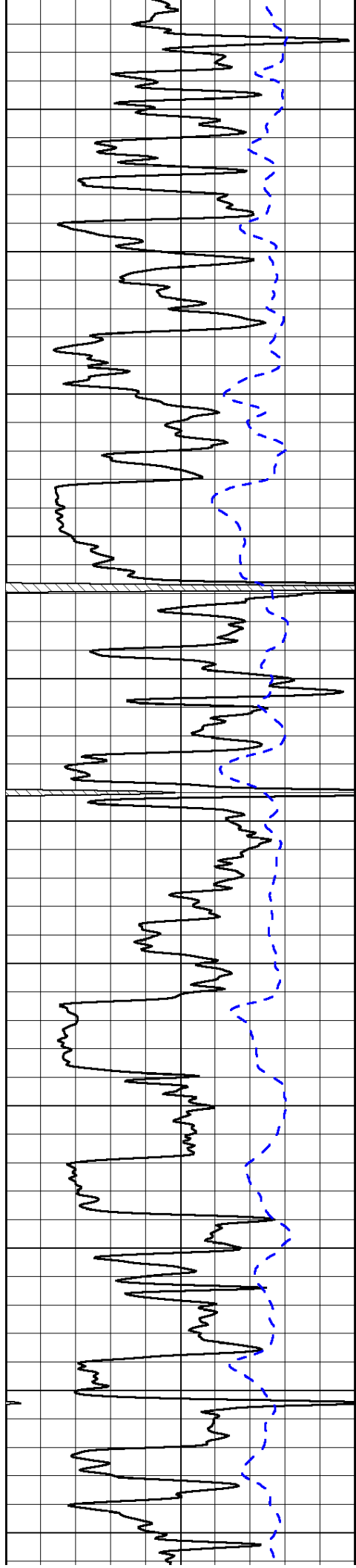


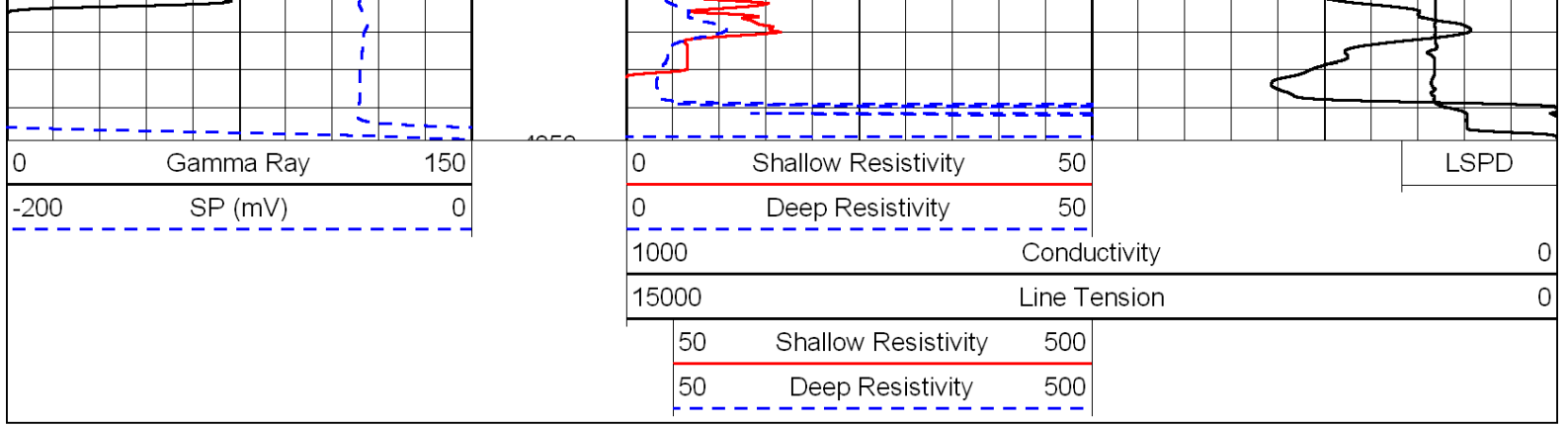




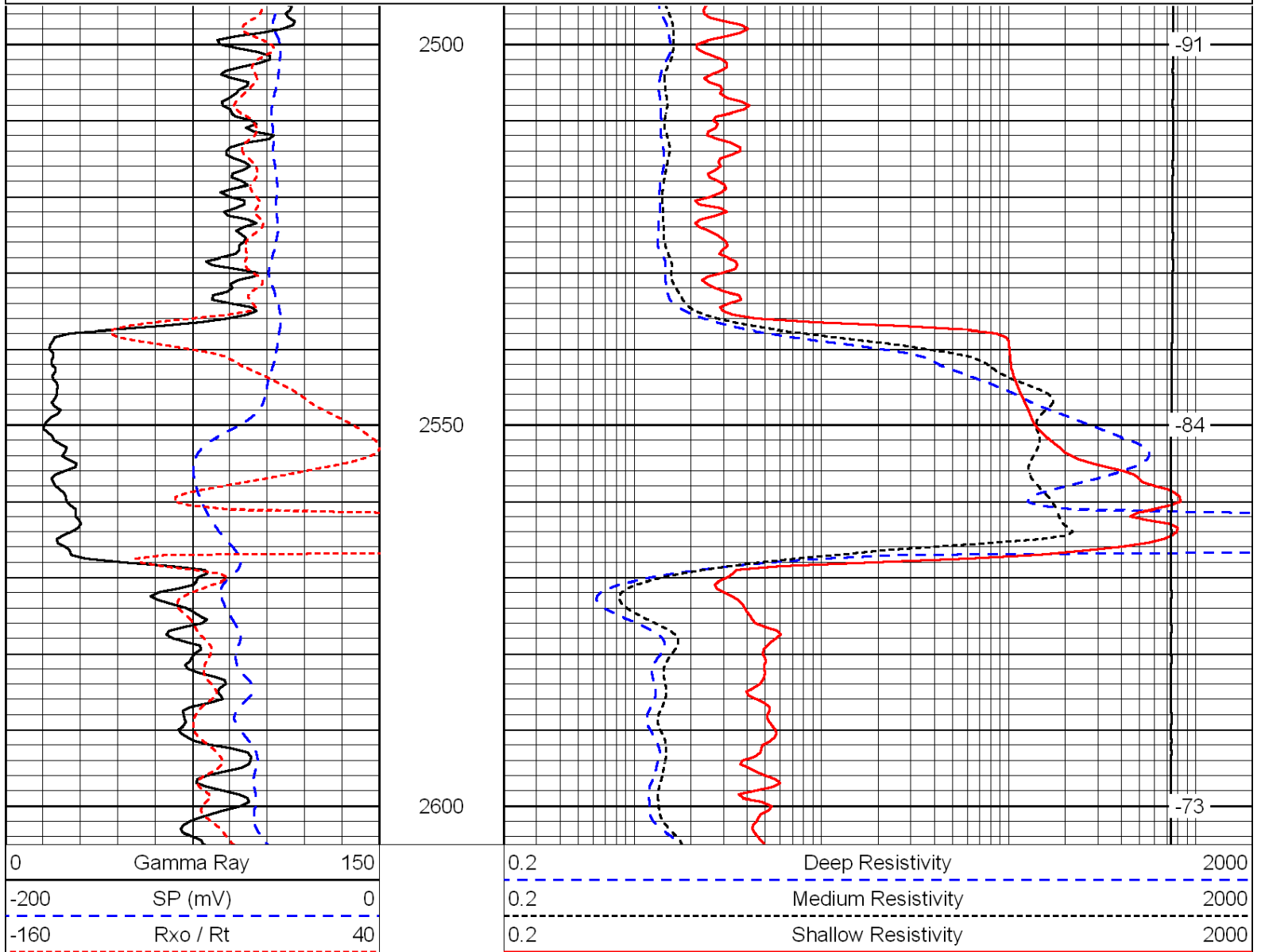
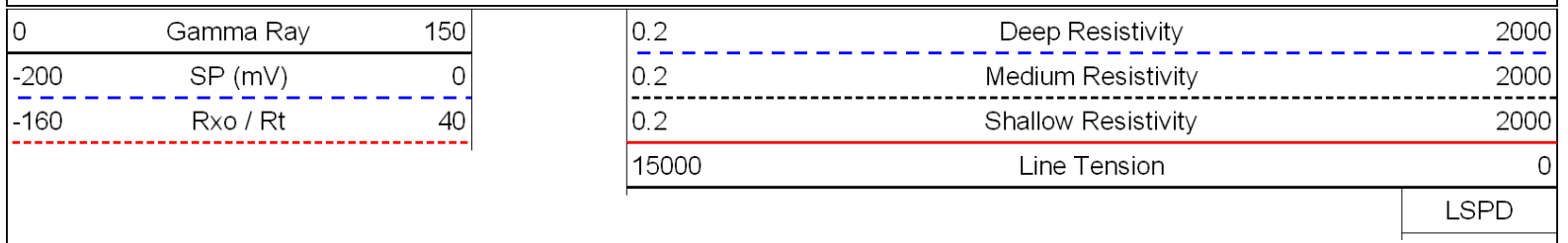








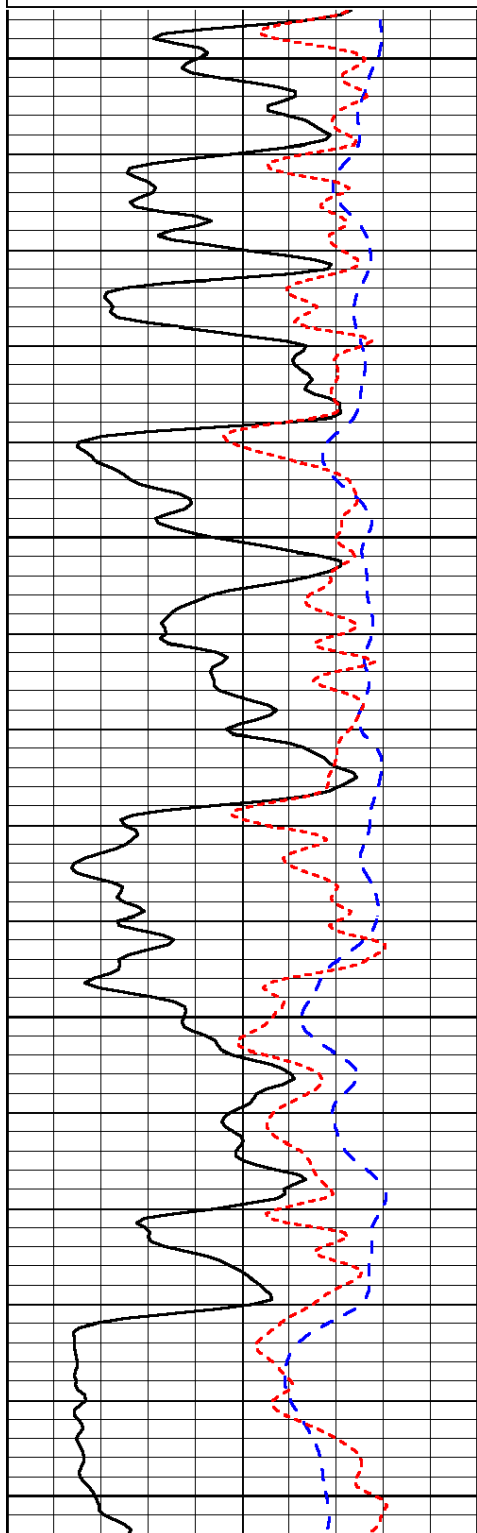
Database File: c:\warrior\data\cholla_kyte-jording no. 2-14\cholla120910hd.db
 Dataset Pathname: dil/chollastk
 Presentation Format: dil
 Dataset Creation: Thu Dec 09 14:58:22 2010
 Charted by: Depth in Feet scaled 1:240



Database File: c:\warrior\data\cholla_kyte-jording no. 2-14\cholla120910hd.db
 Dataset Pathname: dil/chollastk
 Presentation Format: dil
 Dataset Creation: Thu Dec 09 14:58:22 2010
 Charted by: Depth in Feet scaled 1:240

0	Gamma Ray	150
-200	SP (mV)	0
-160	Rxo / Rt	40

0.2	Deep Resistivity	2000
0.2	Medium Resistivity	2000
0.2	Shallow Resistivity	2000
15000	Line Tension	0

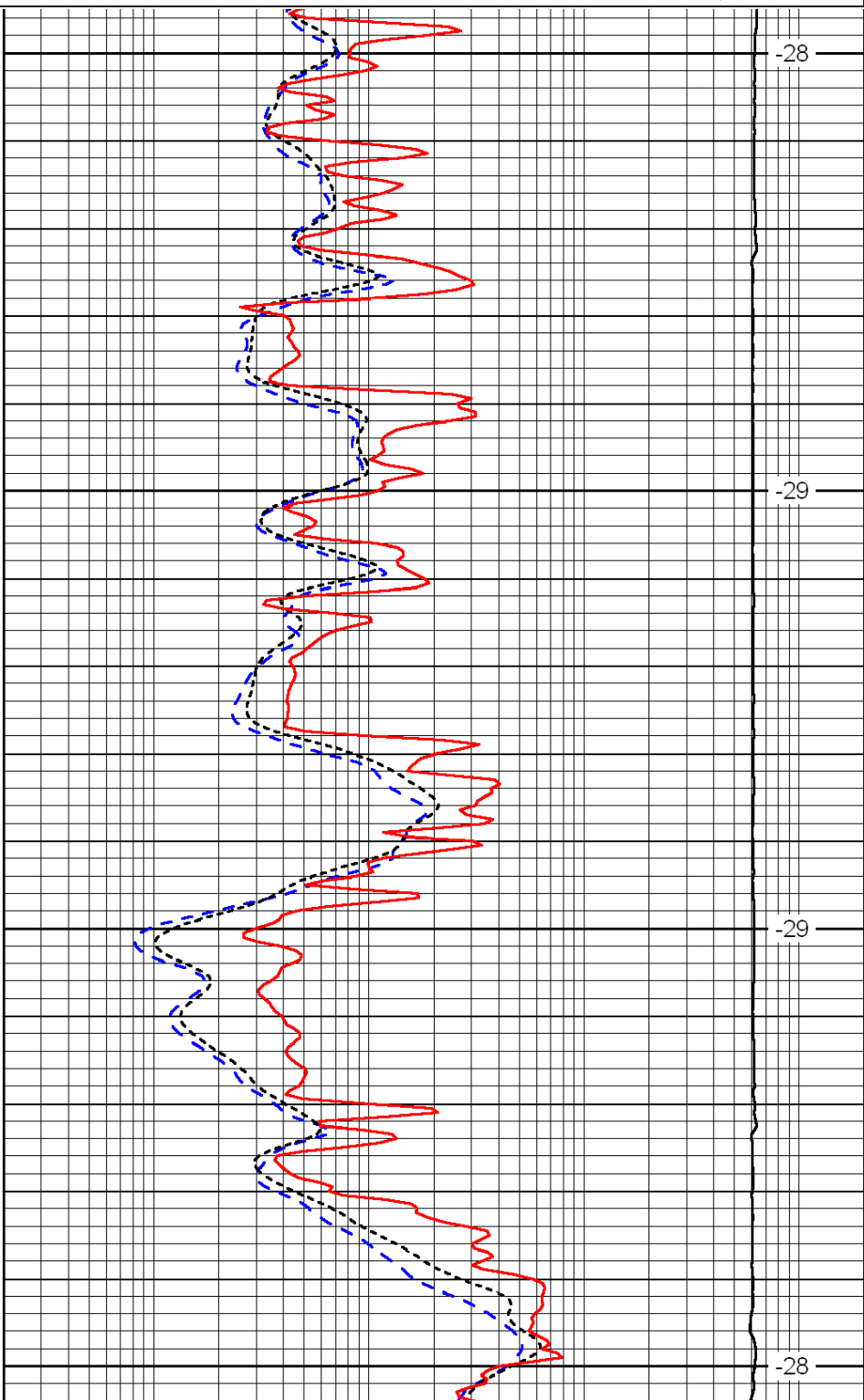


3500

3550

3600

3650

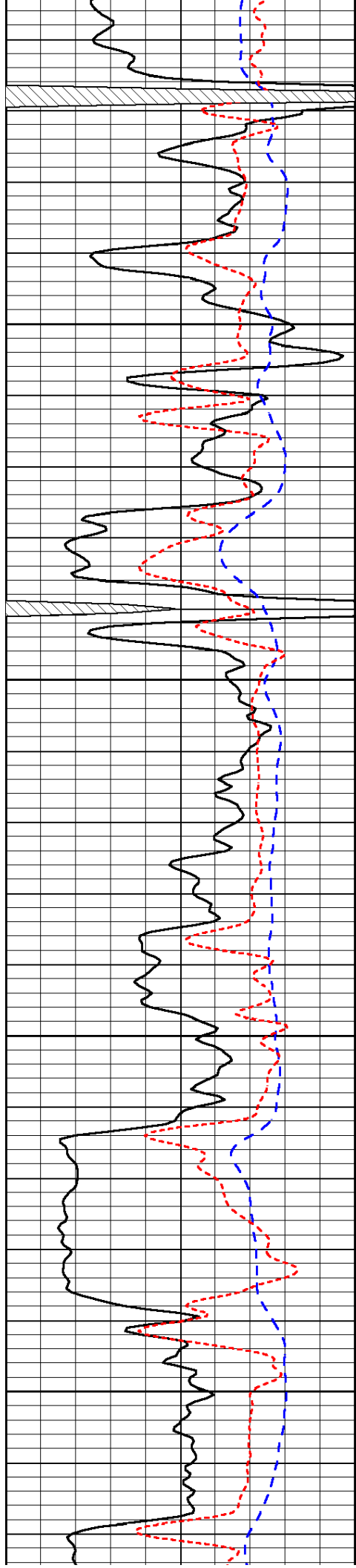


-28

-29

-29

-28

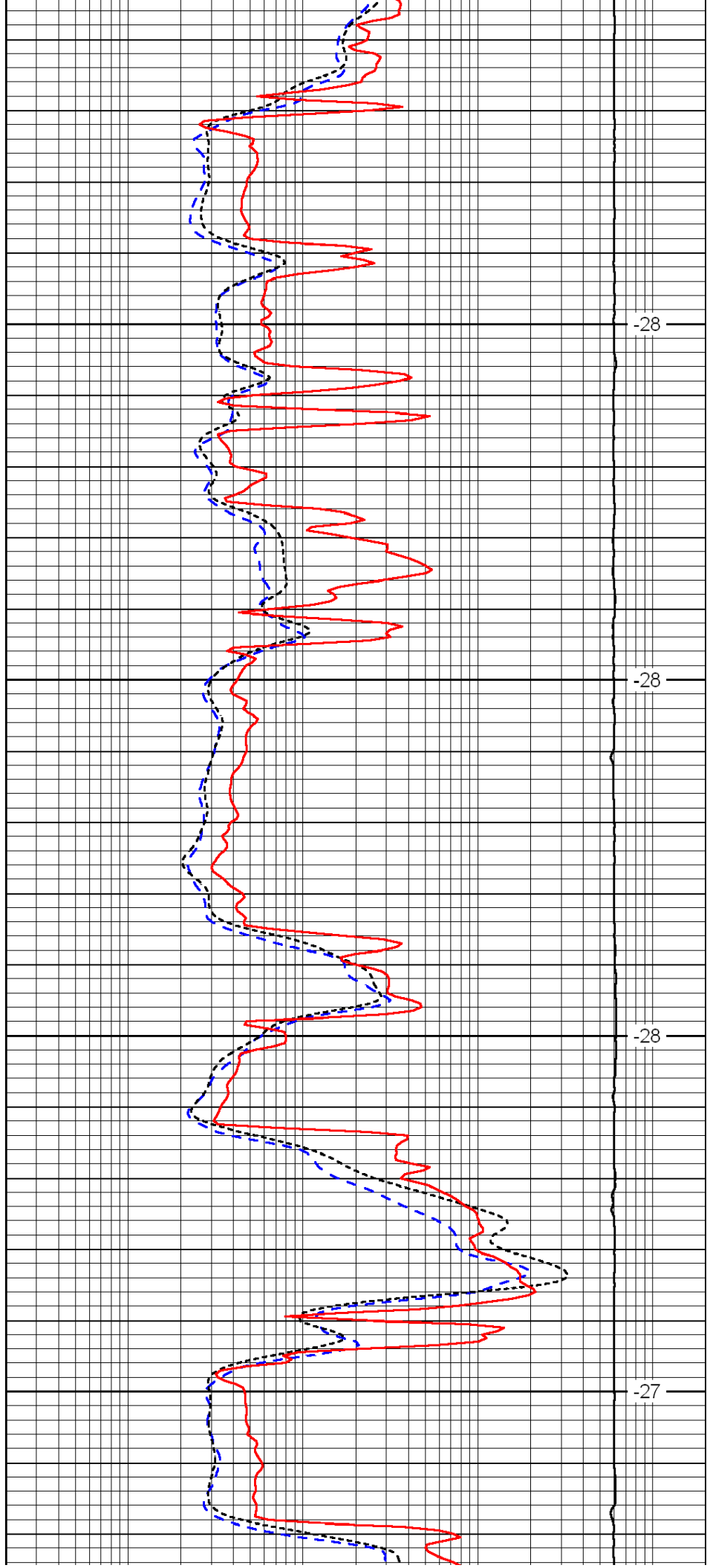


3700

3750

3800

3850

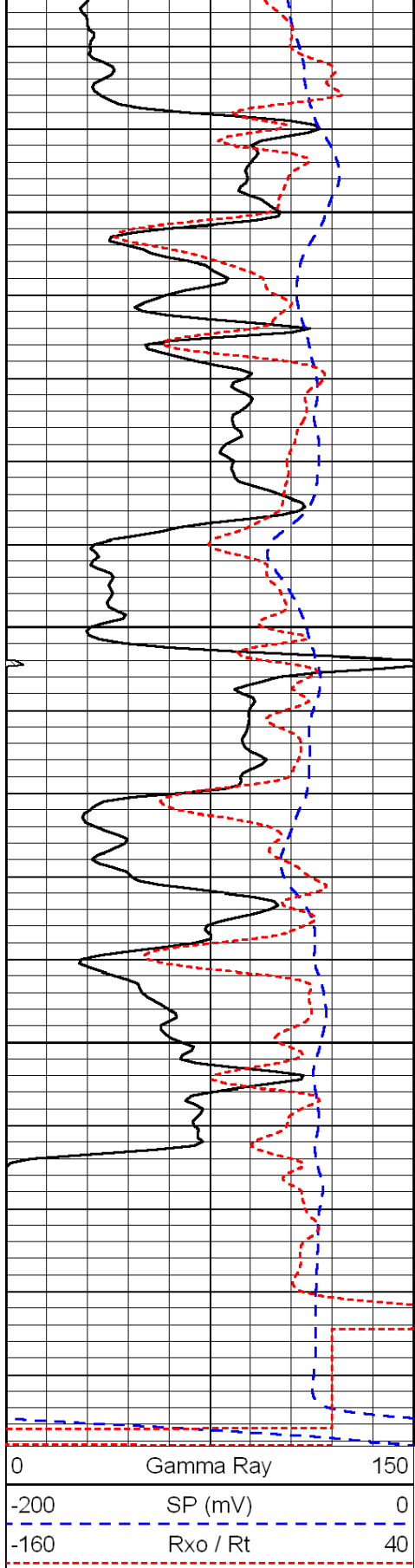


-28

-28

-28

-27

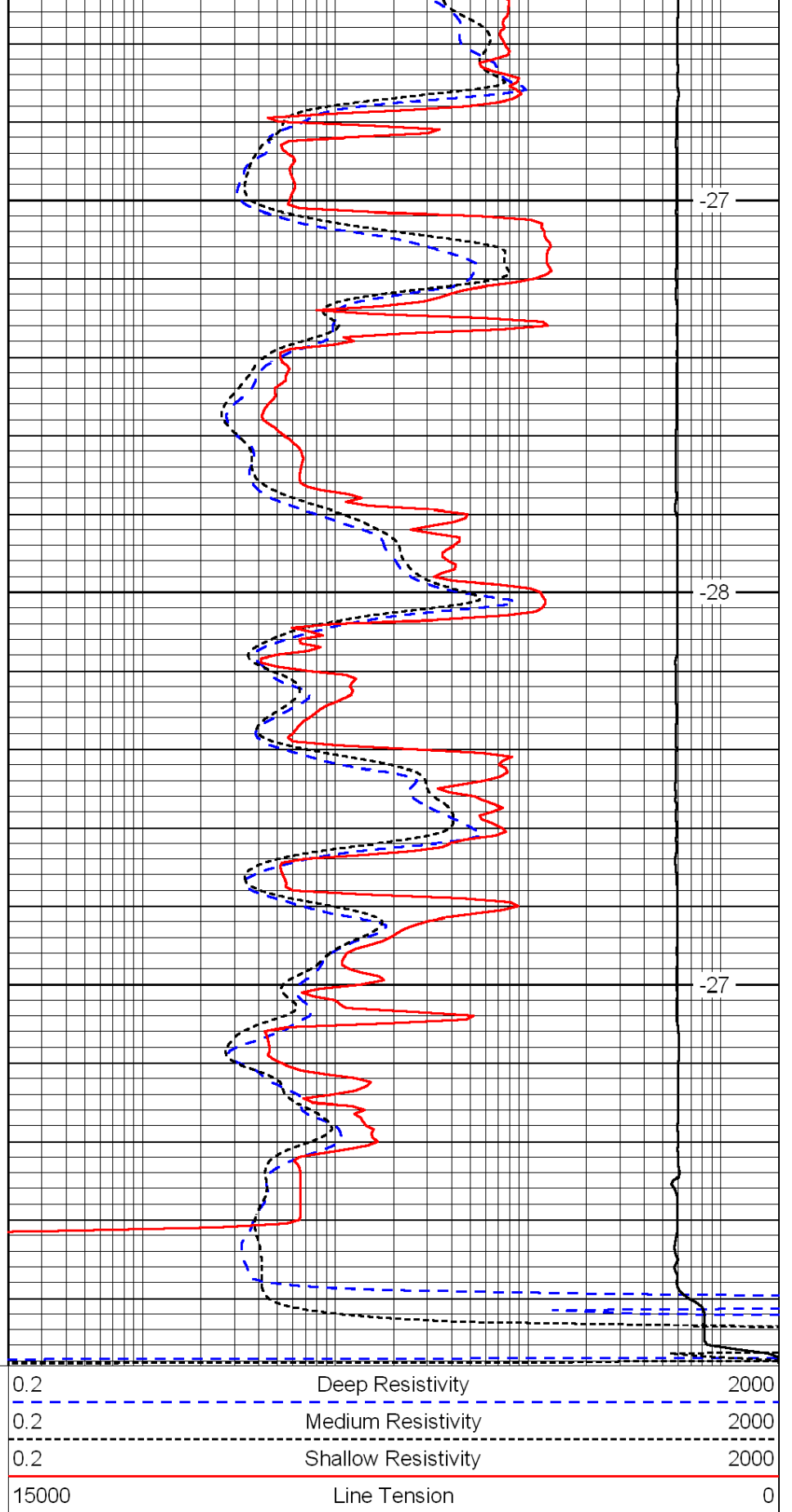


3900

3950

4000

0	Gamma Ray	150
-200	SP (mV)	0
-160	Rxo / Rt	40



-27

-28

-27

0.2	Deep Resistivity	2000
0.2	Medium Resistivity	2000
0.2	Shallow Resistivity	2000
15000	Line Tension	0

LSPD