



Gamma Ray Correlation Log

Ph. (785) 625-3858

15-155-21442-00-00

Company **Bear Petroleum**
 Well **McGonigle No. 1**
 Field
 County **Reno** State **Kansas**

Location

C of N/2 NE SE

Other Services

Sec: **19** Twp: **23 S** Rge: **8 W**

Elevation

Permanent Datum **Ground Level** Elevation **1677**

Log Measured From **Kelly Bushing** 8 Ft. Above Perm. Datum

K.B. 1685
D.F.
G.L. 1677

Date **07/03/2012**

Run Number **One**

Type Log **GRCCL**

Depth Driller **3815**

Depth Logger **3758**

Bottom Logged Interval **3757**

Top Logged Interval **1000**

Type Fluid In Hole **Water/Oil**

Salinity, PPM/CL **////**

Density **////**

Level **////**

Max. Rec. Temp. F **116**

Operating Rig Time **1 1/2 Hours**

Equipment -- Location **71 Hays**

Recorded By **Scott Clermont**

Witnessed By **Joe Burnett**

Borehole Record

Casing Record

Run No	Bit	From	To	Size	Wgt.	From	To
One	12.25	00	275	8.625	24#	00	275
Two	7.875	275	3815	4.5		0	TD

<<< Fold Here >>>

All interpretations are opinions based on inferences from electrical or other measurements and we cannot and do not guarantee the accuracy or correctness of any interpretation, and we shall not, except in the case of gross or willful negligence on our part, be liable or responsible for any loss, costs, damages, or expenses incurred or sustained by anyone resulting from any interpretation made by any of our officers, agents or employees. These interpretations are also subject to our general terms and conditions set out in our current Price Schedule.

Comments

Thank you for using Log-Tech
(785) 625-3858

Arlington Ks, North to 4th Ave, West to Peach Rd., 1 1/2 South, West Into

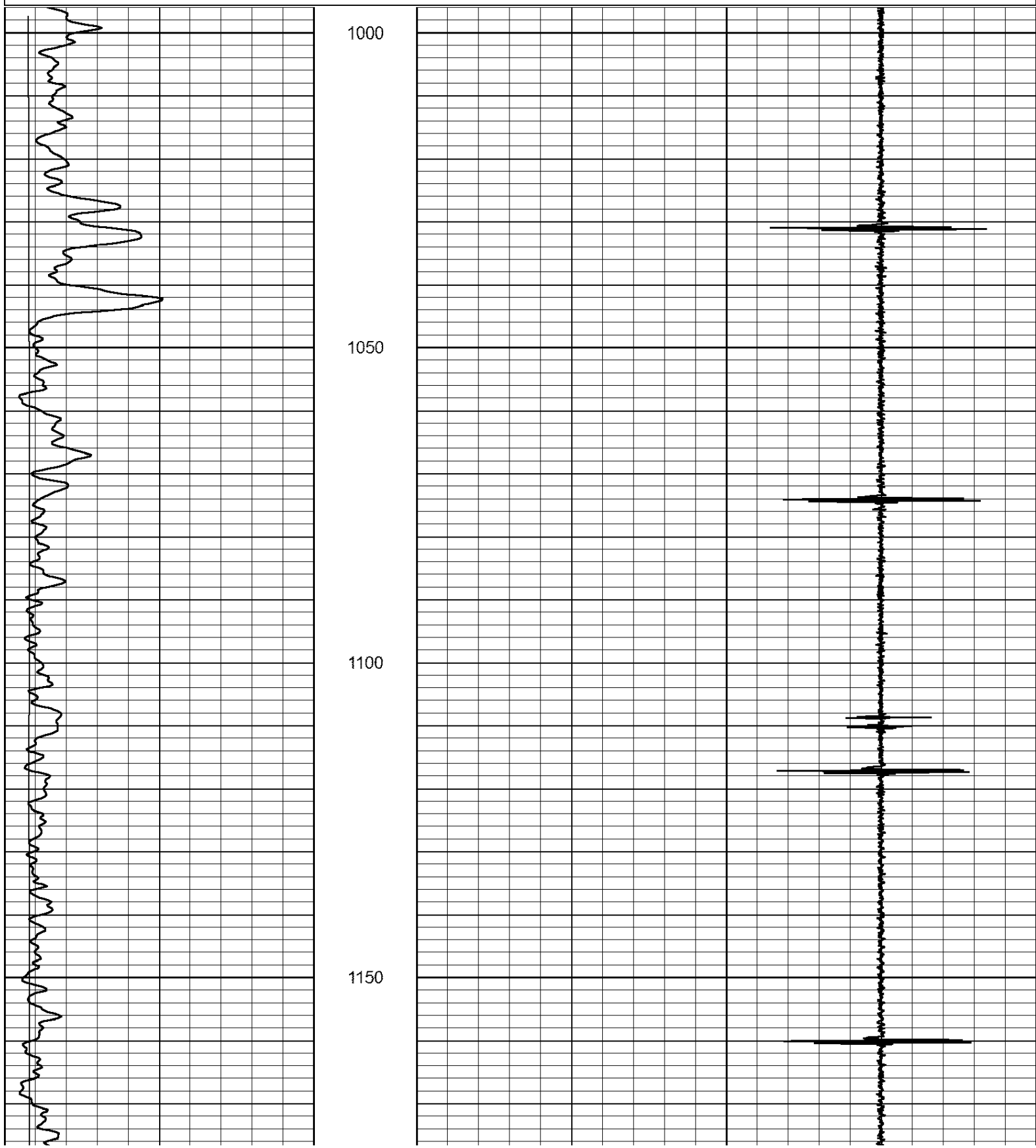


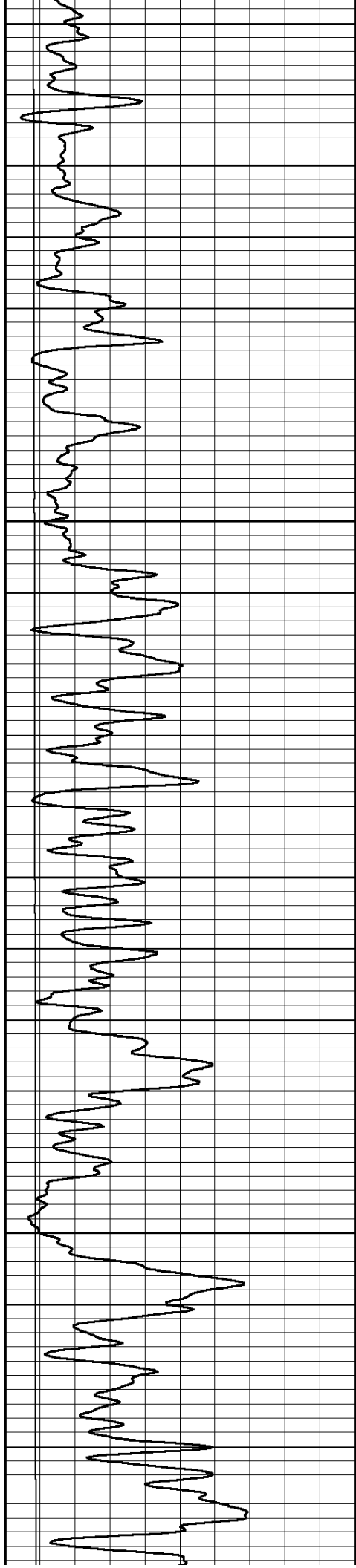
Main Pass

Database File: bearpetro_7-3-12.db
Dataset Pathname: grcl/pass4
Presentation Format: gr-ccl
Dataset Creation: Tue Jul 03 10:03:23 2012 by Calc SCH 111116
Charted by: Depth in Feet scaled 1:240

0	Gamma Ray	150
0	lten (lb)	5000

3	Casing Collars	-3
---	----------------	----



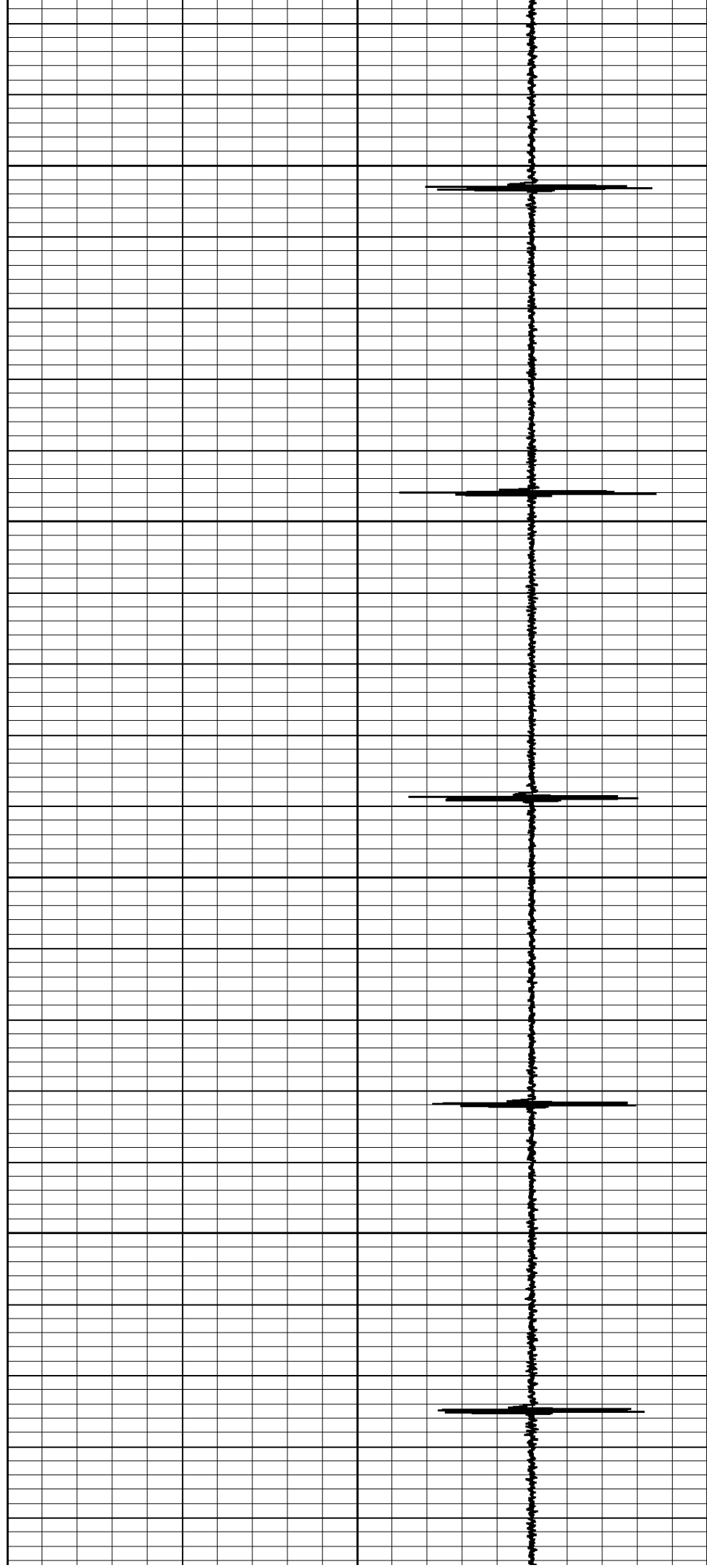


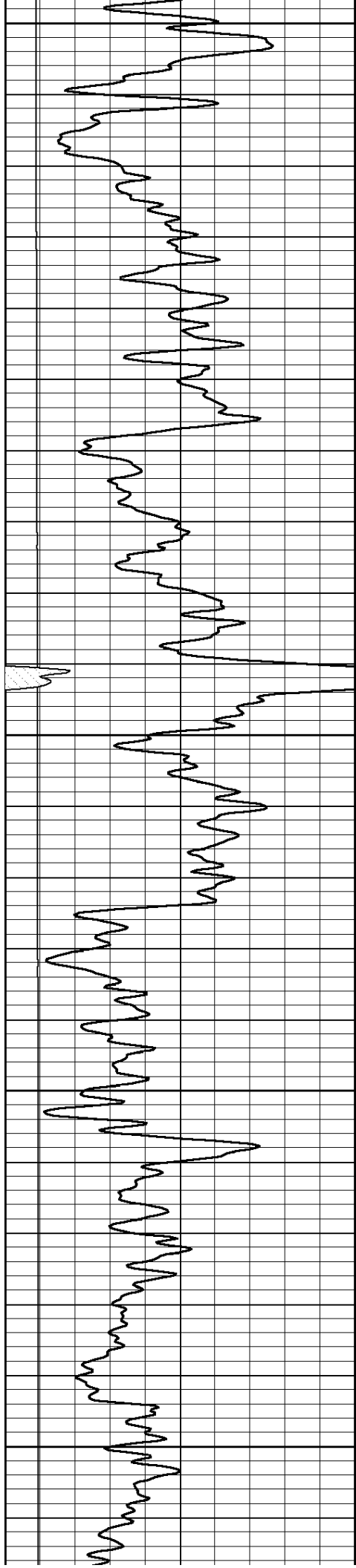
1200

1250

1300

1350





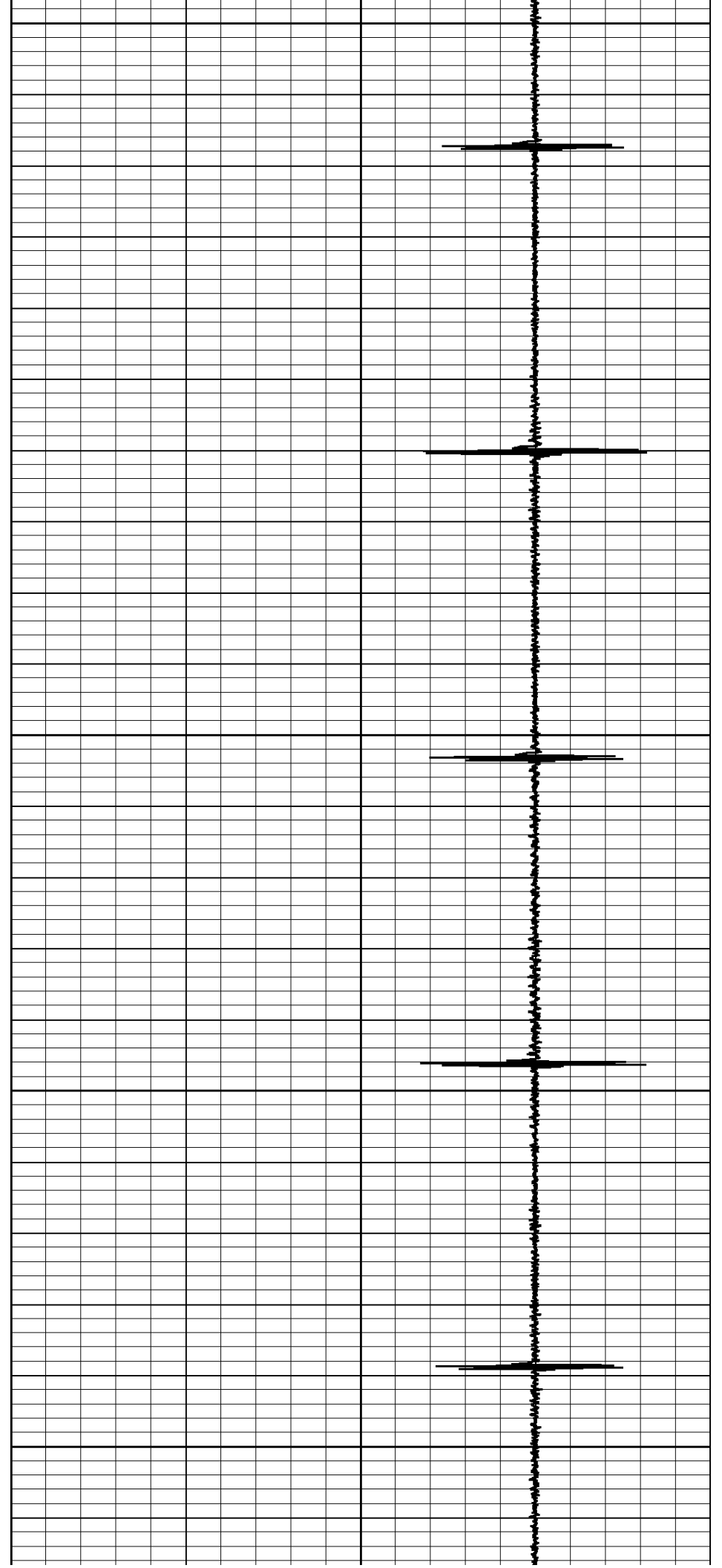
1400

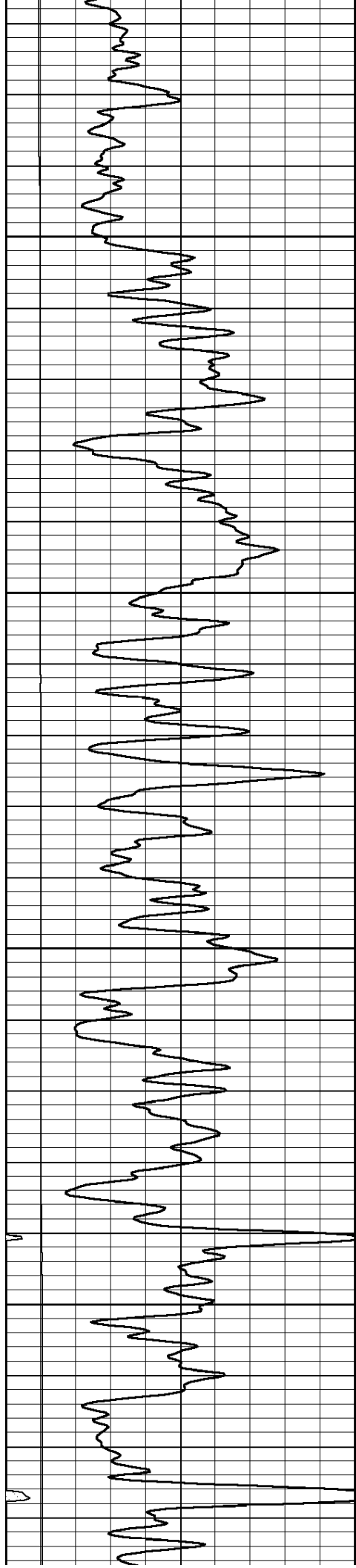
1450

1500

1550

1600



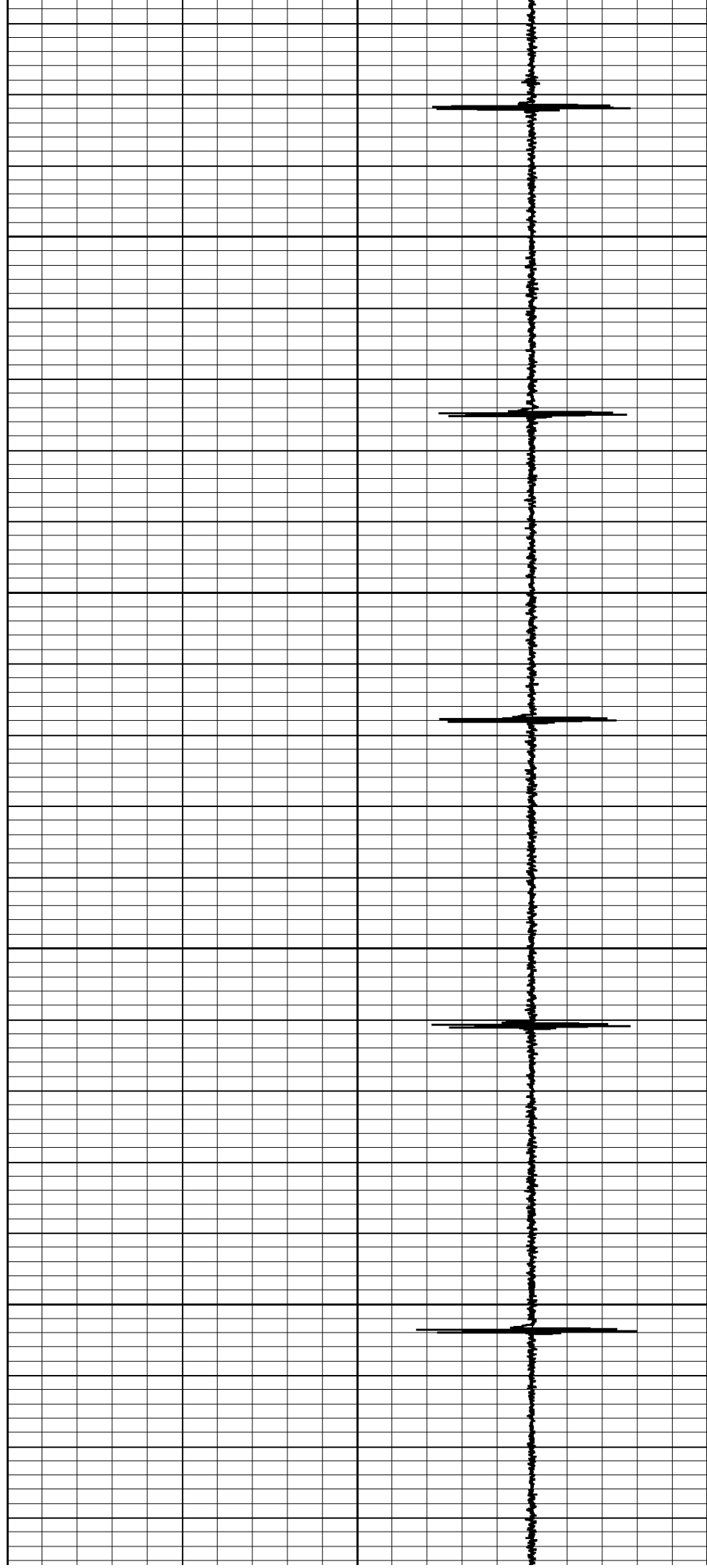


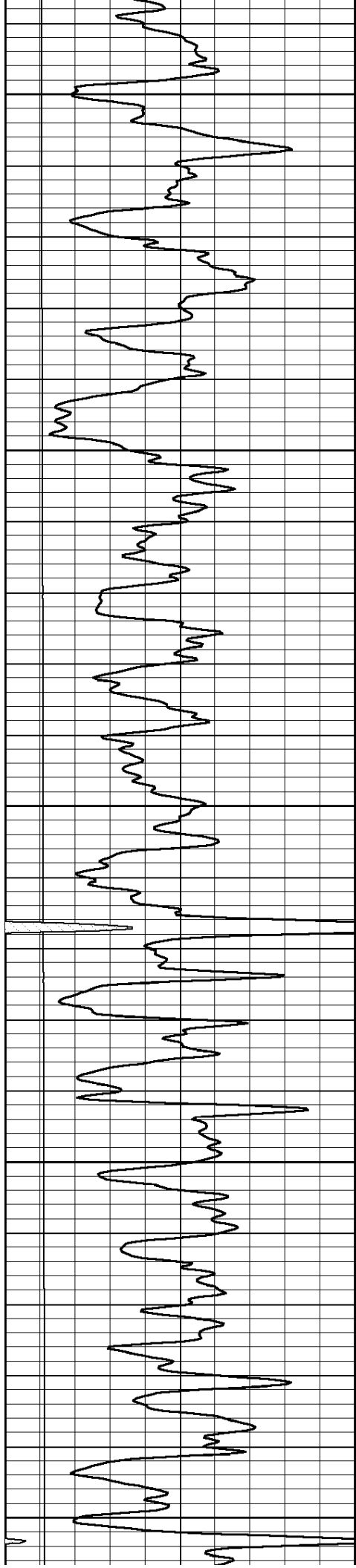
1650

1700

1750

1800





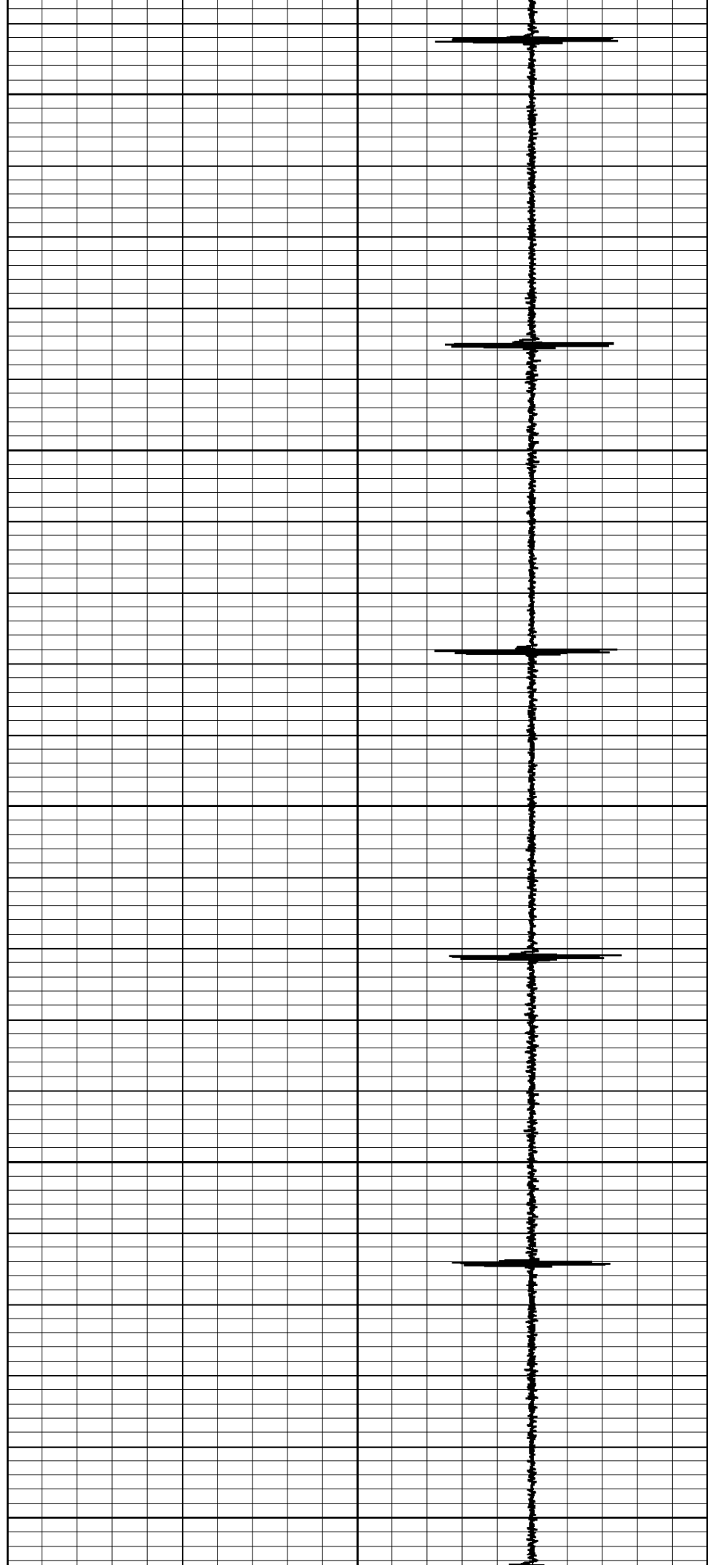
1850

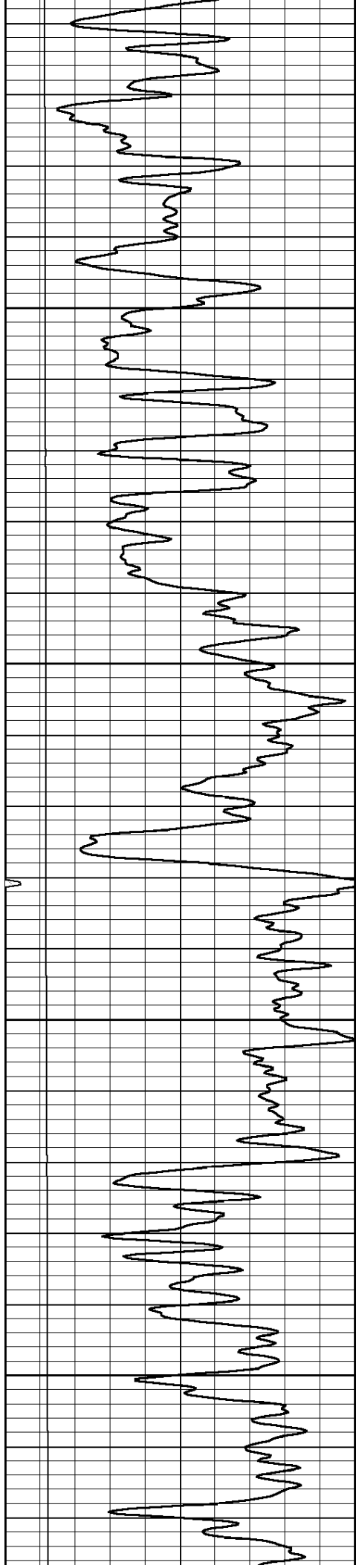
1900

1950

2000

2050



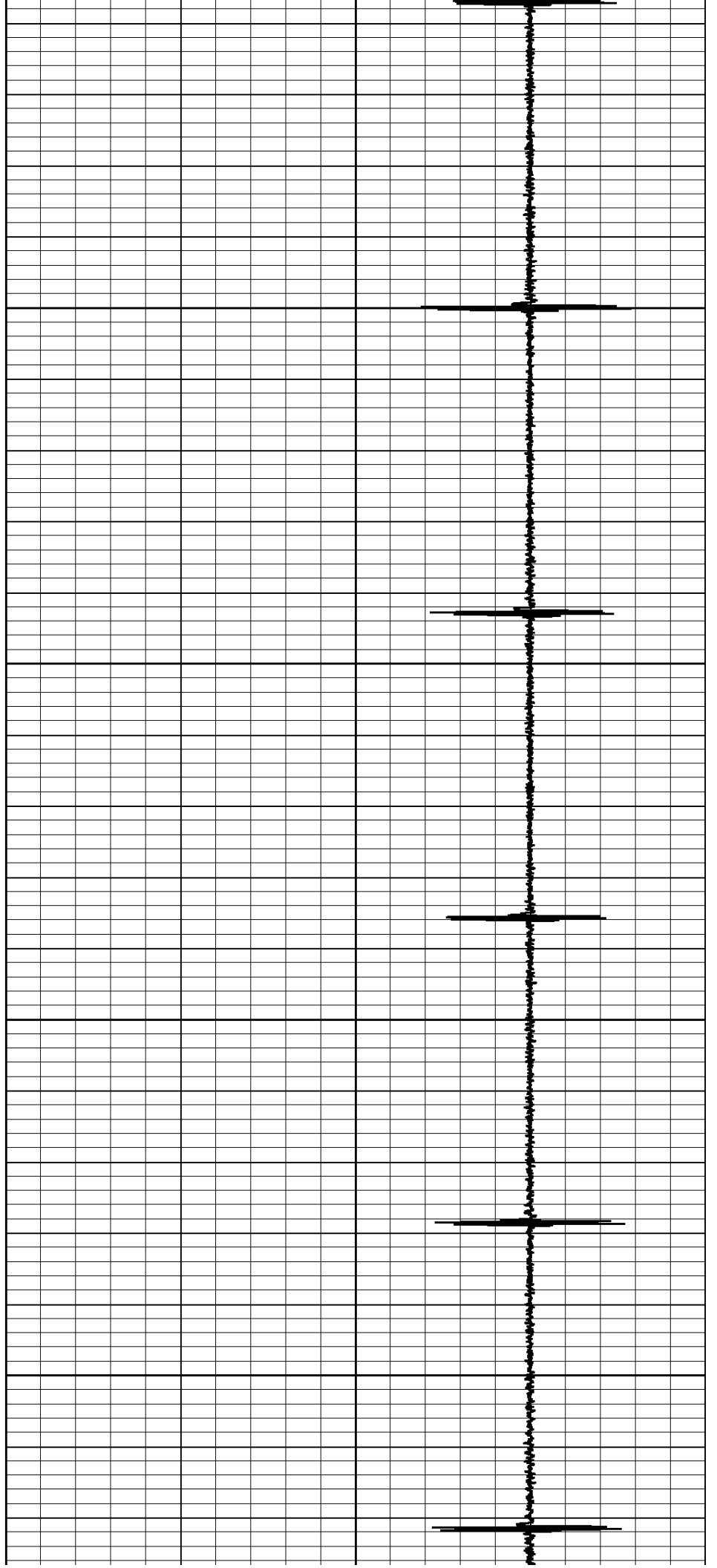


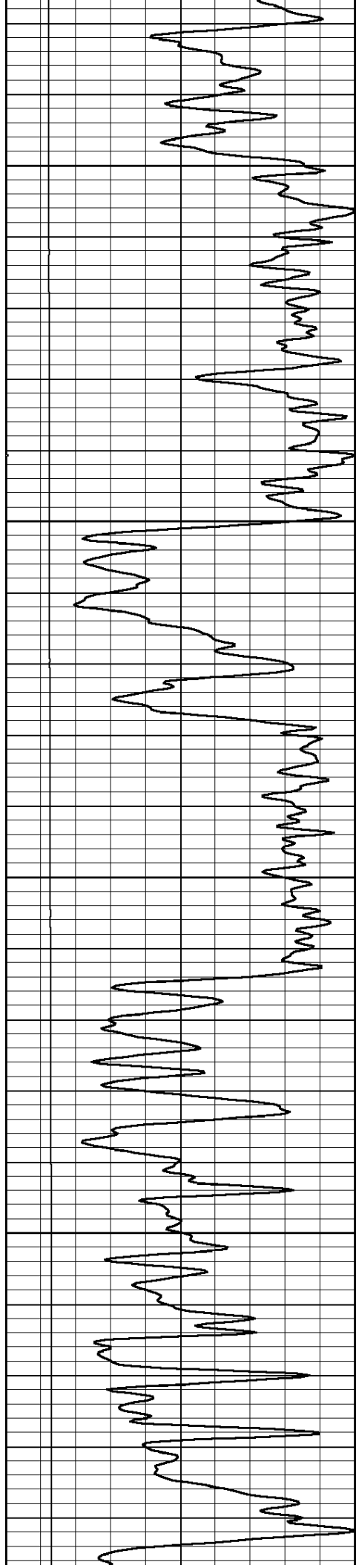
2100

2150

2200

2250



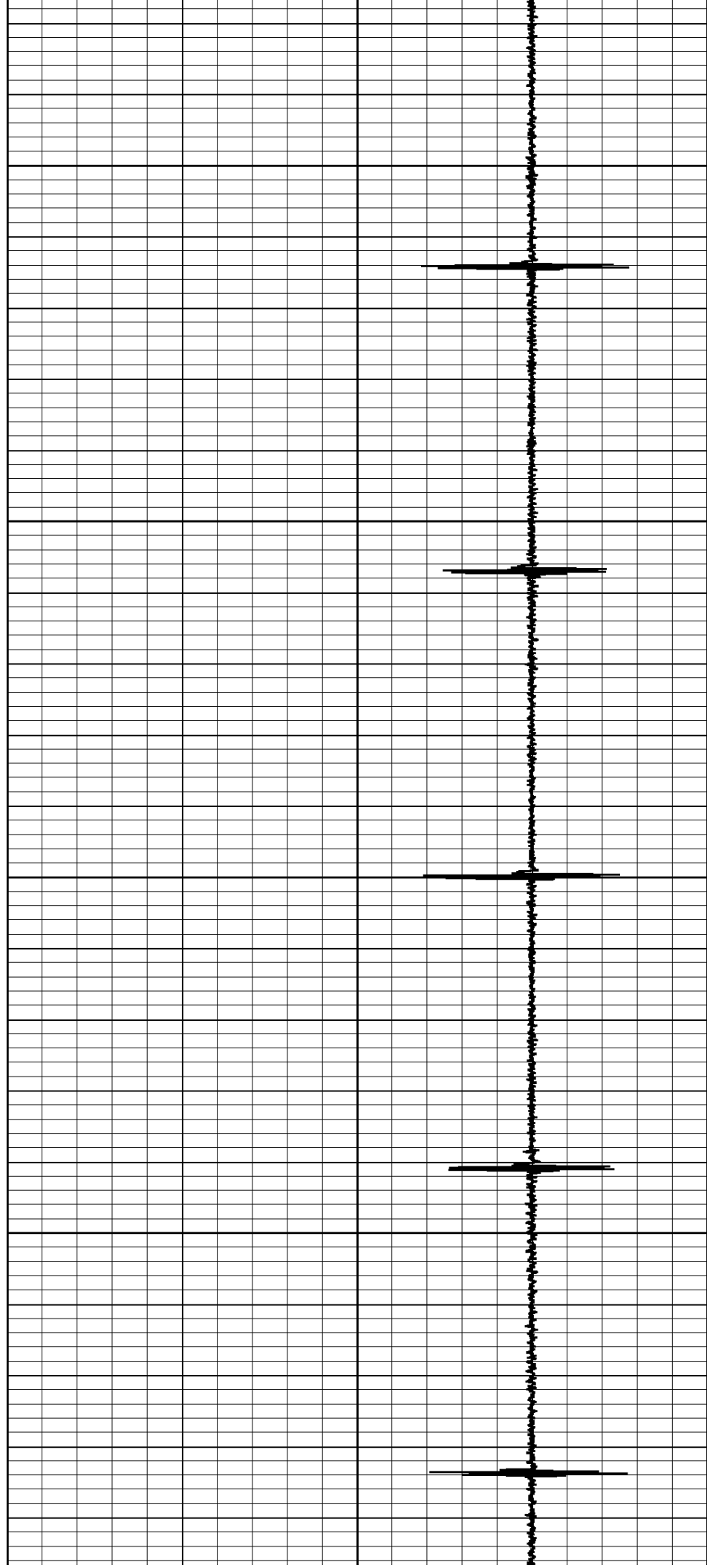


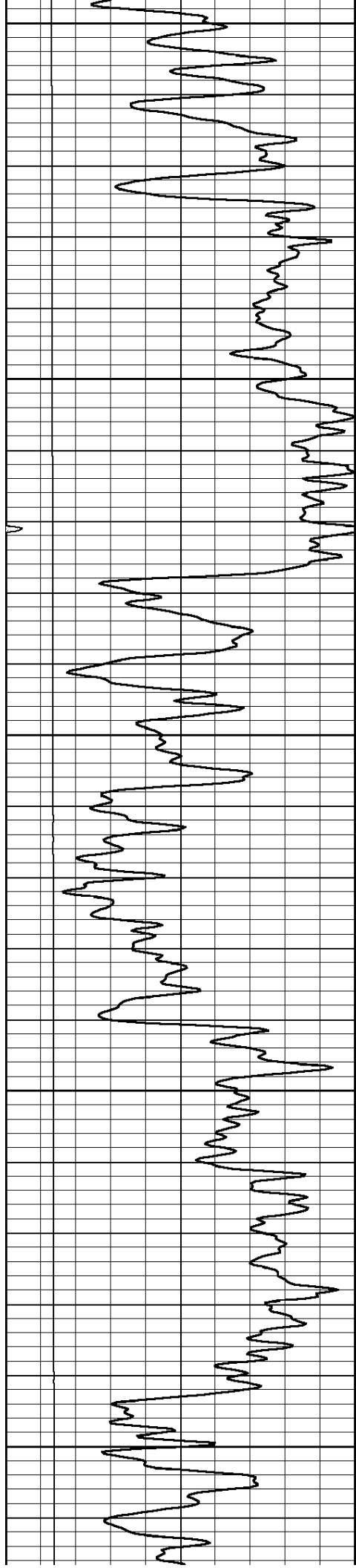
2300

2350

2400

2450





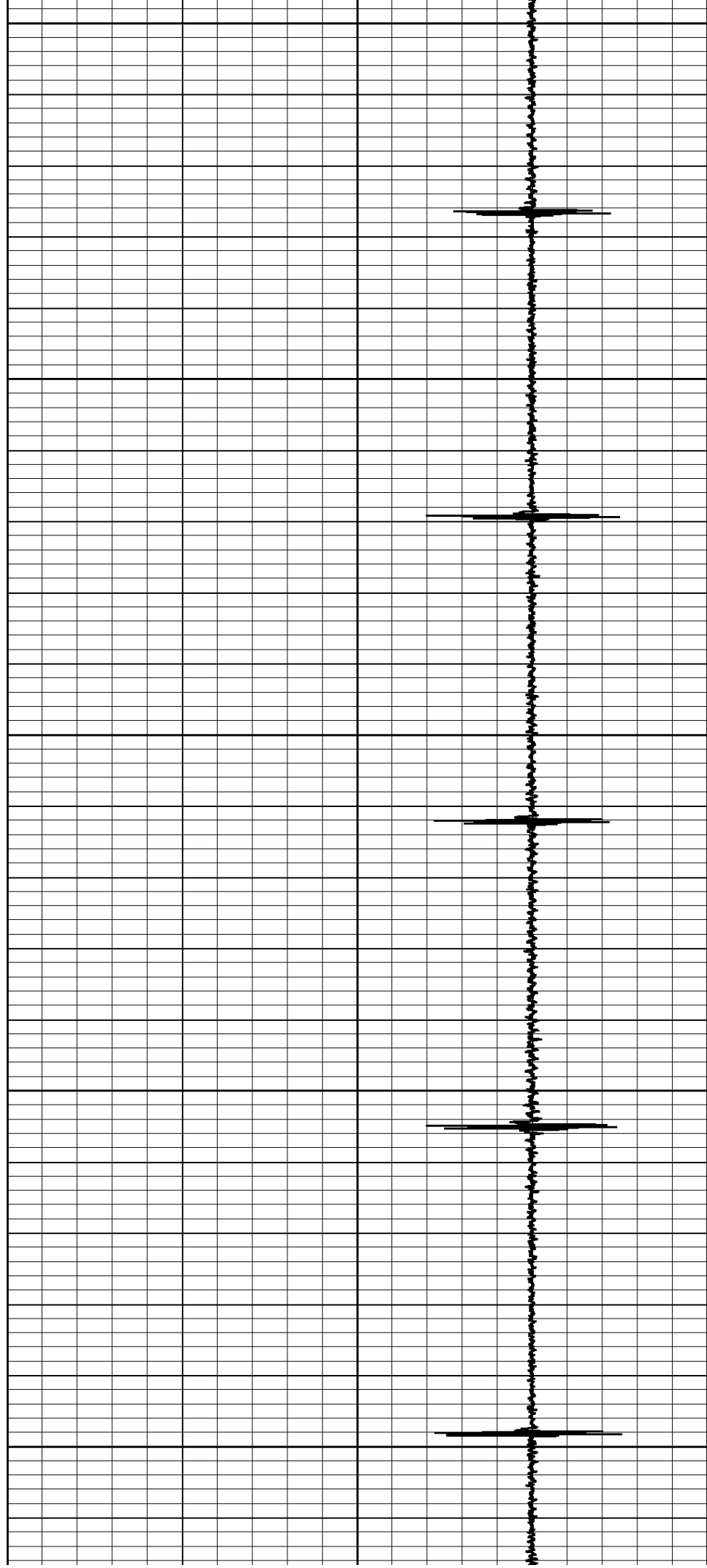
2500

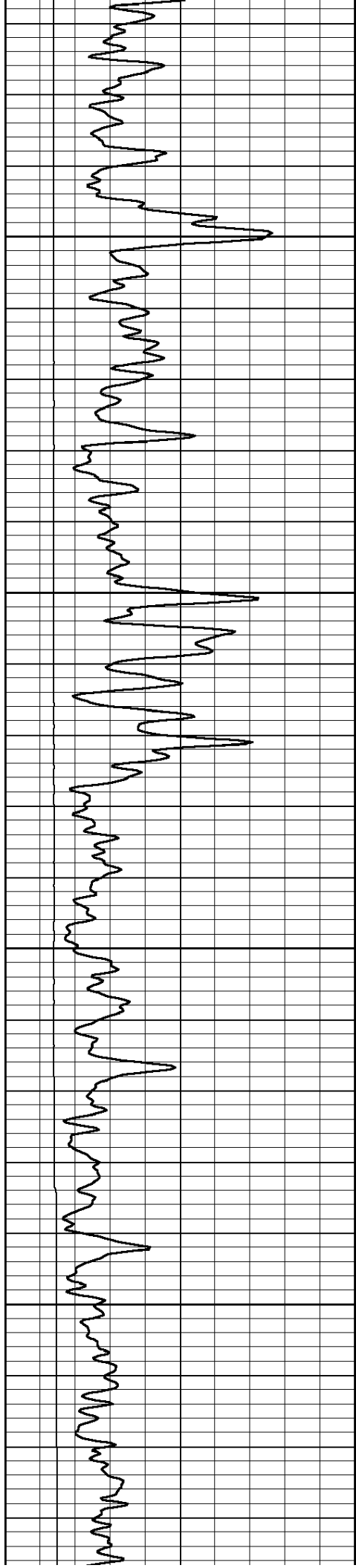
2550

2600

2650

2700



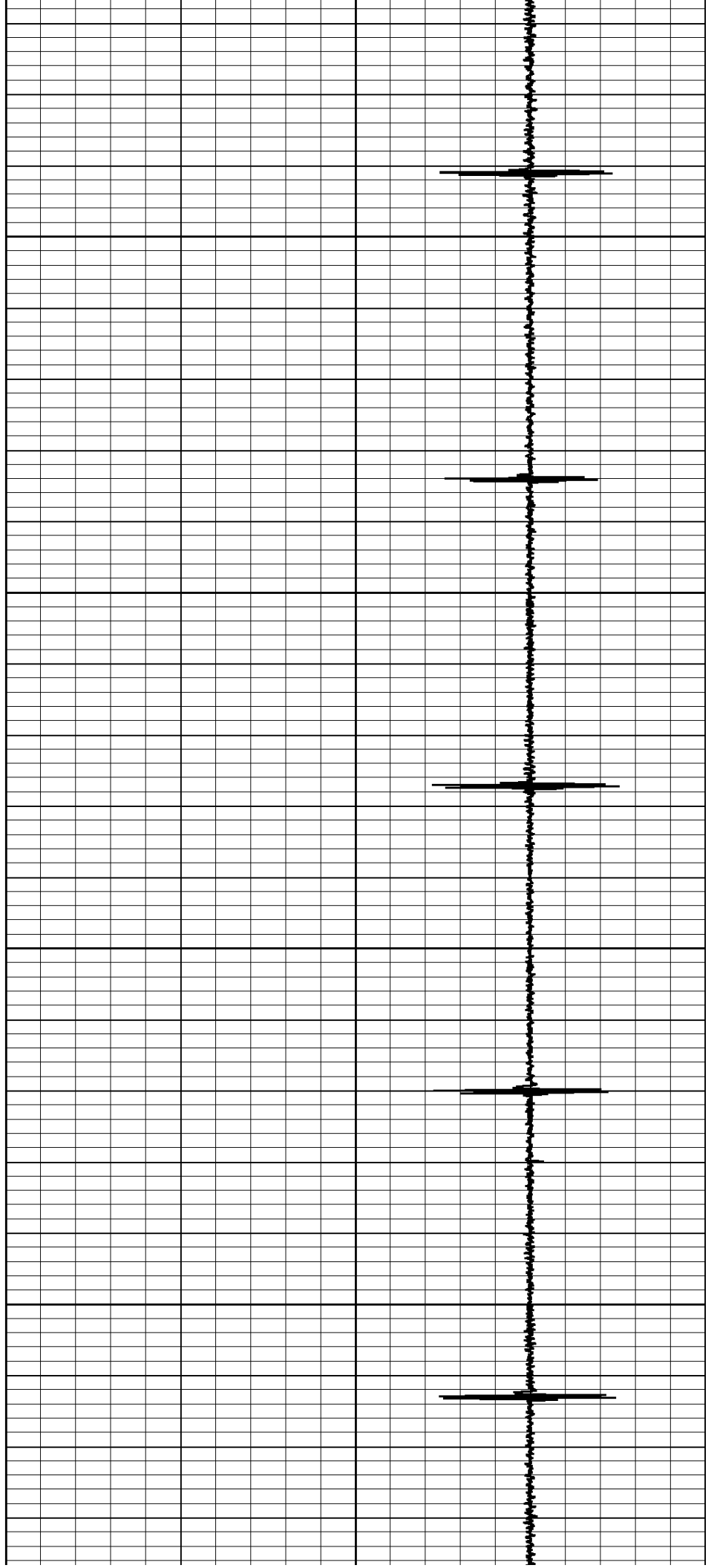


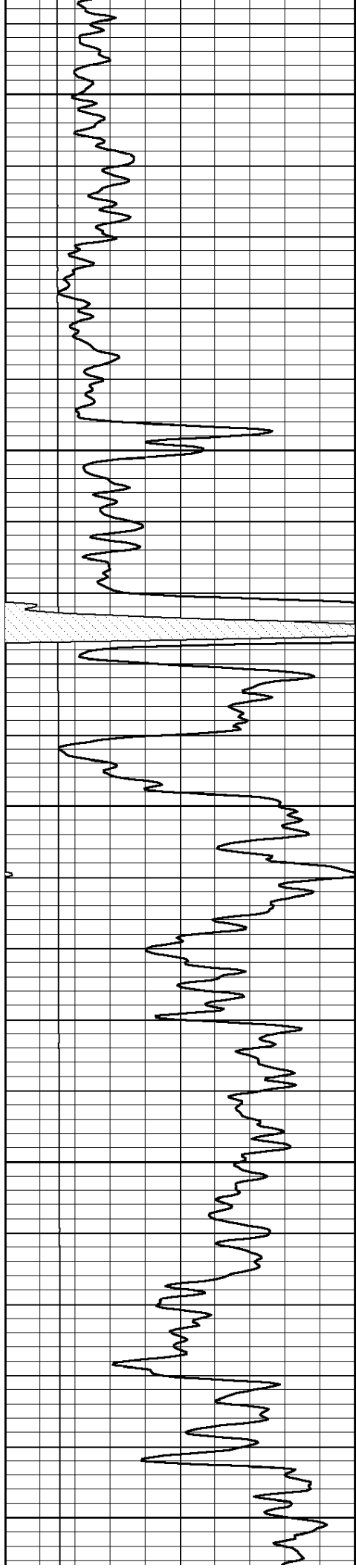
2750

2800

2850

2900





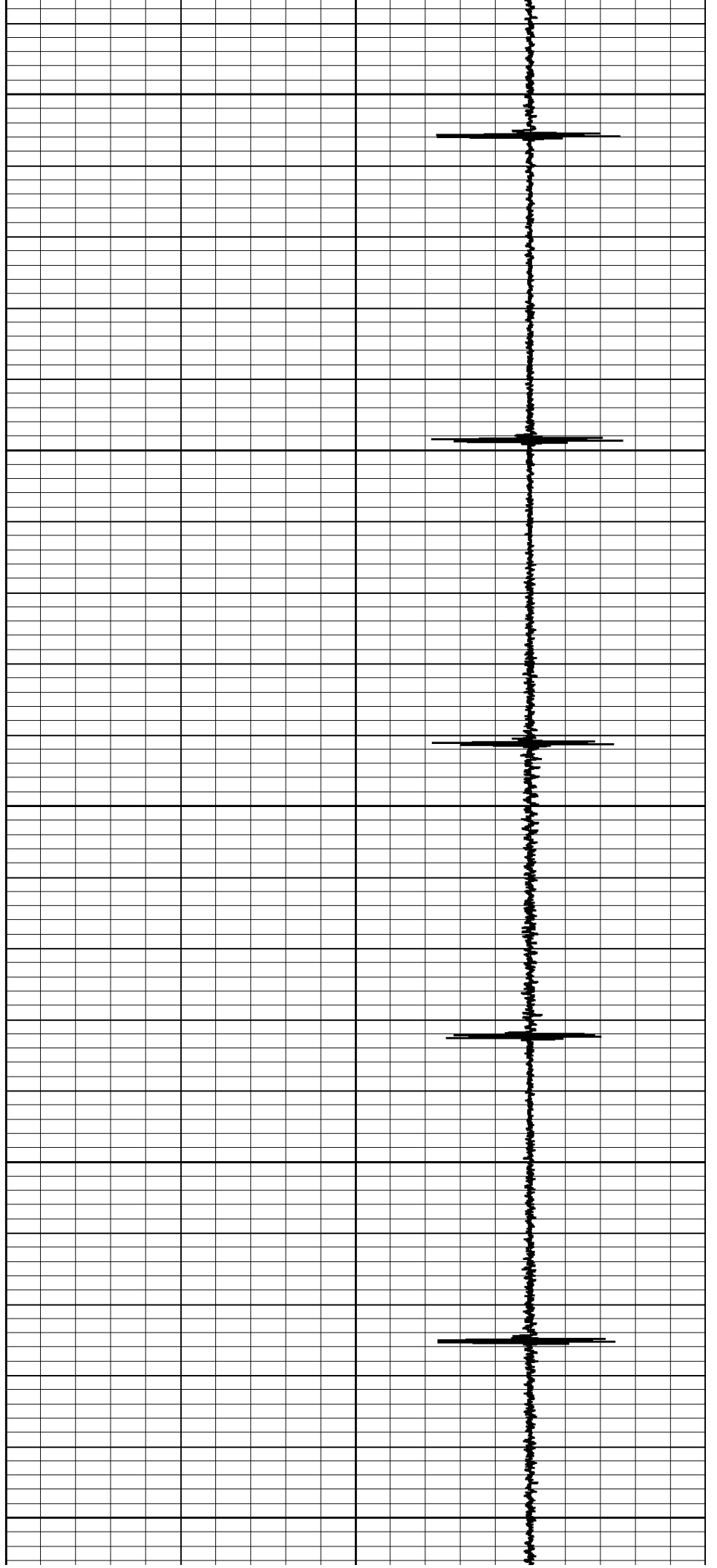
2950

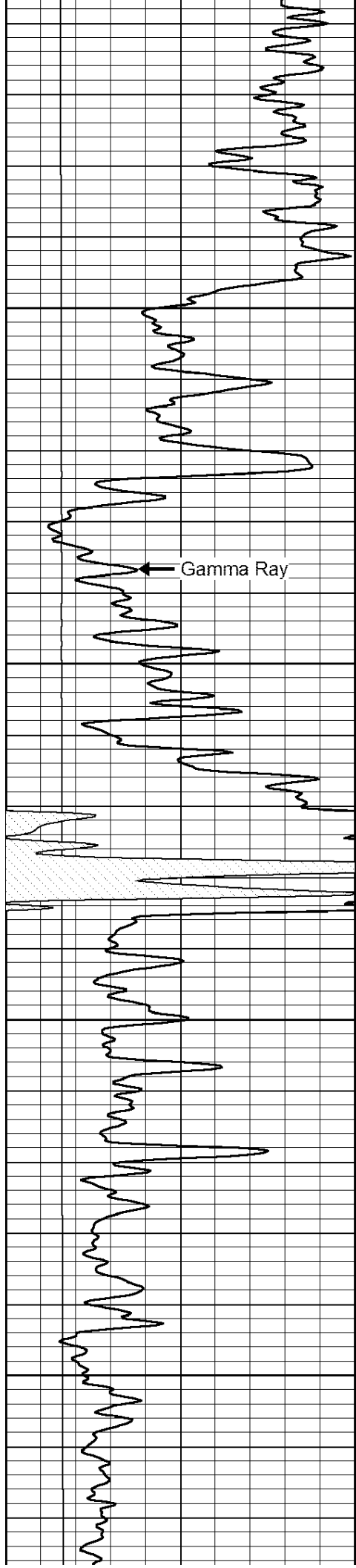
3000

3050

3100

3150



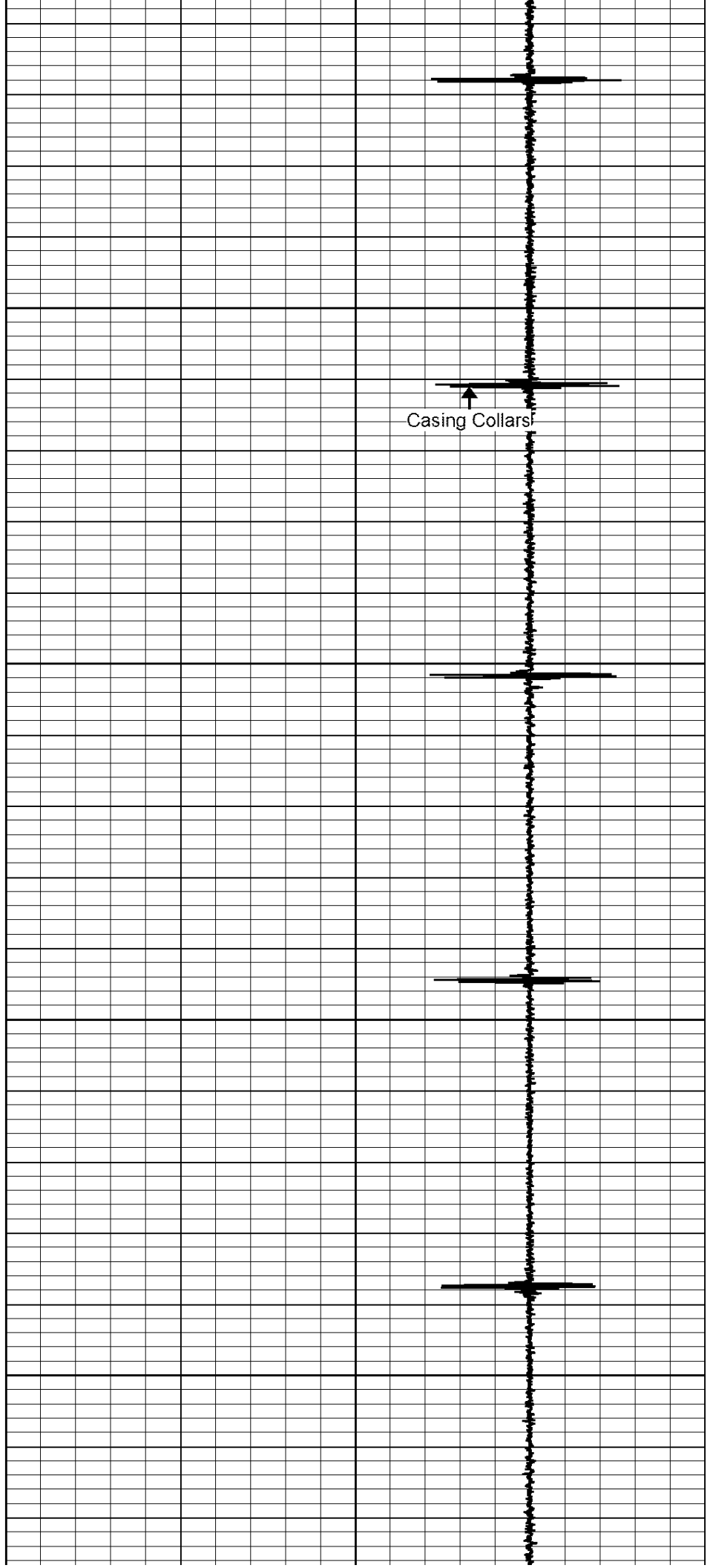


3200

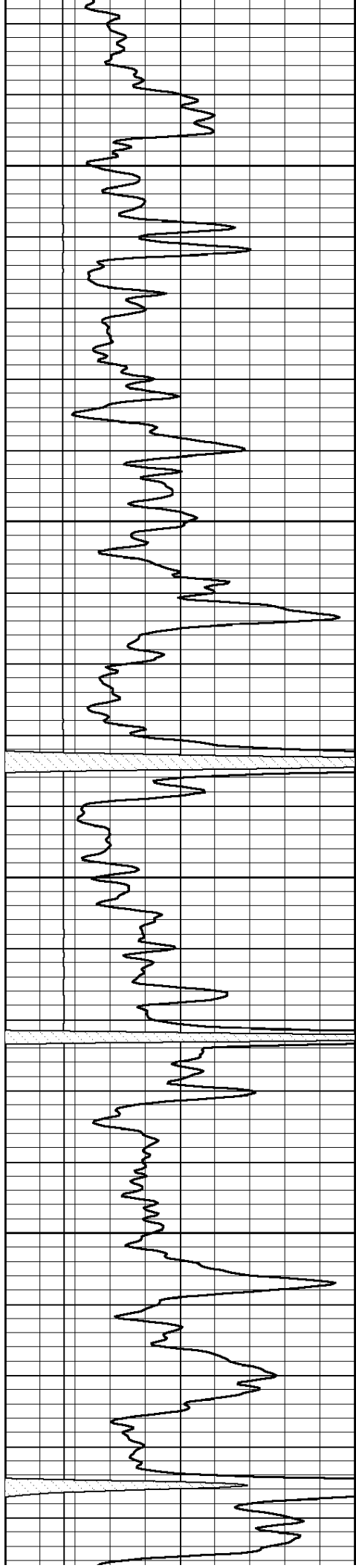
3250

3300

3350



Casing Collars

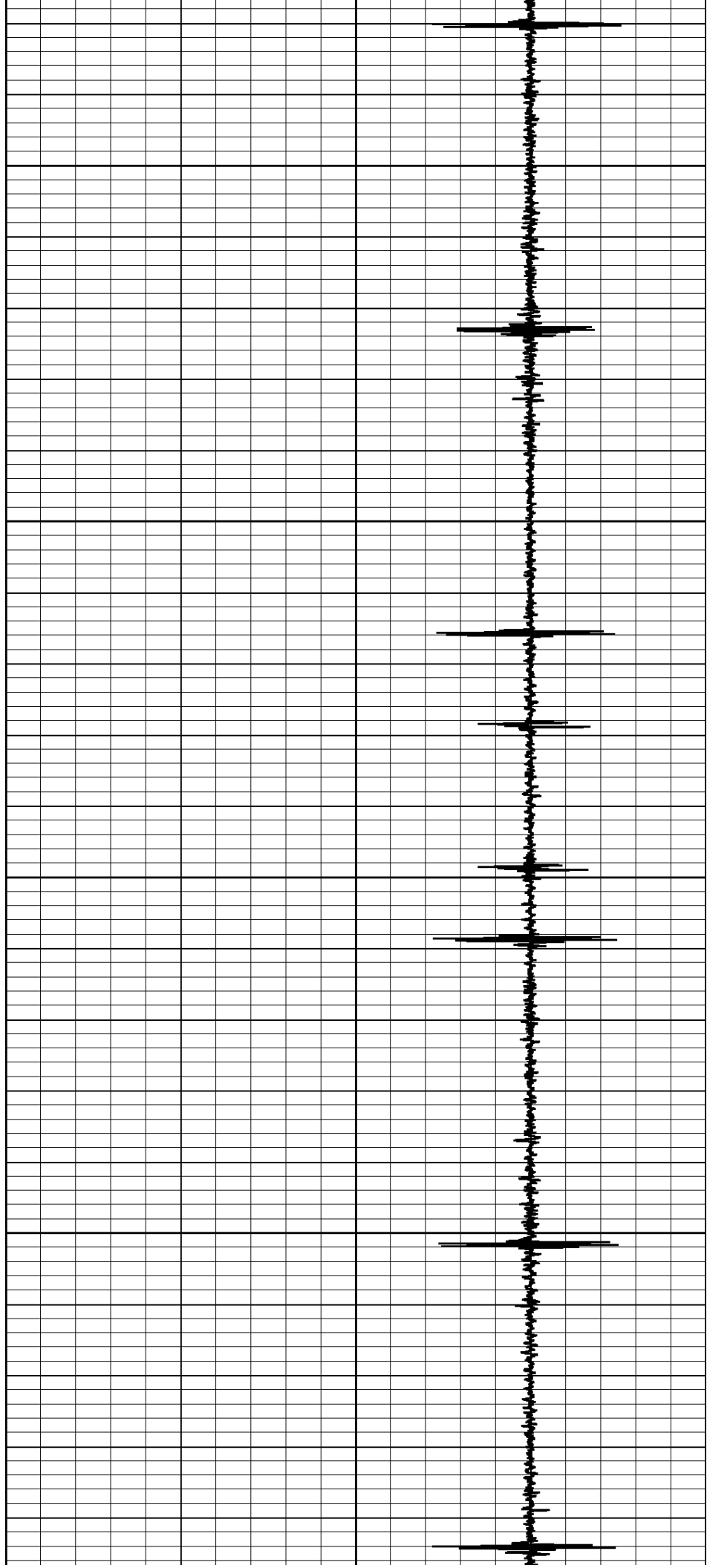


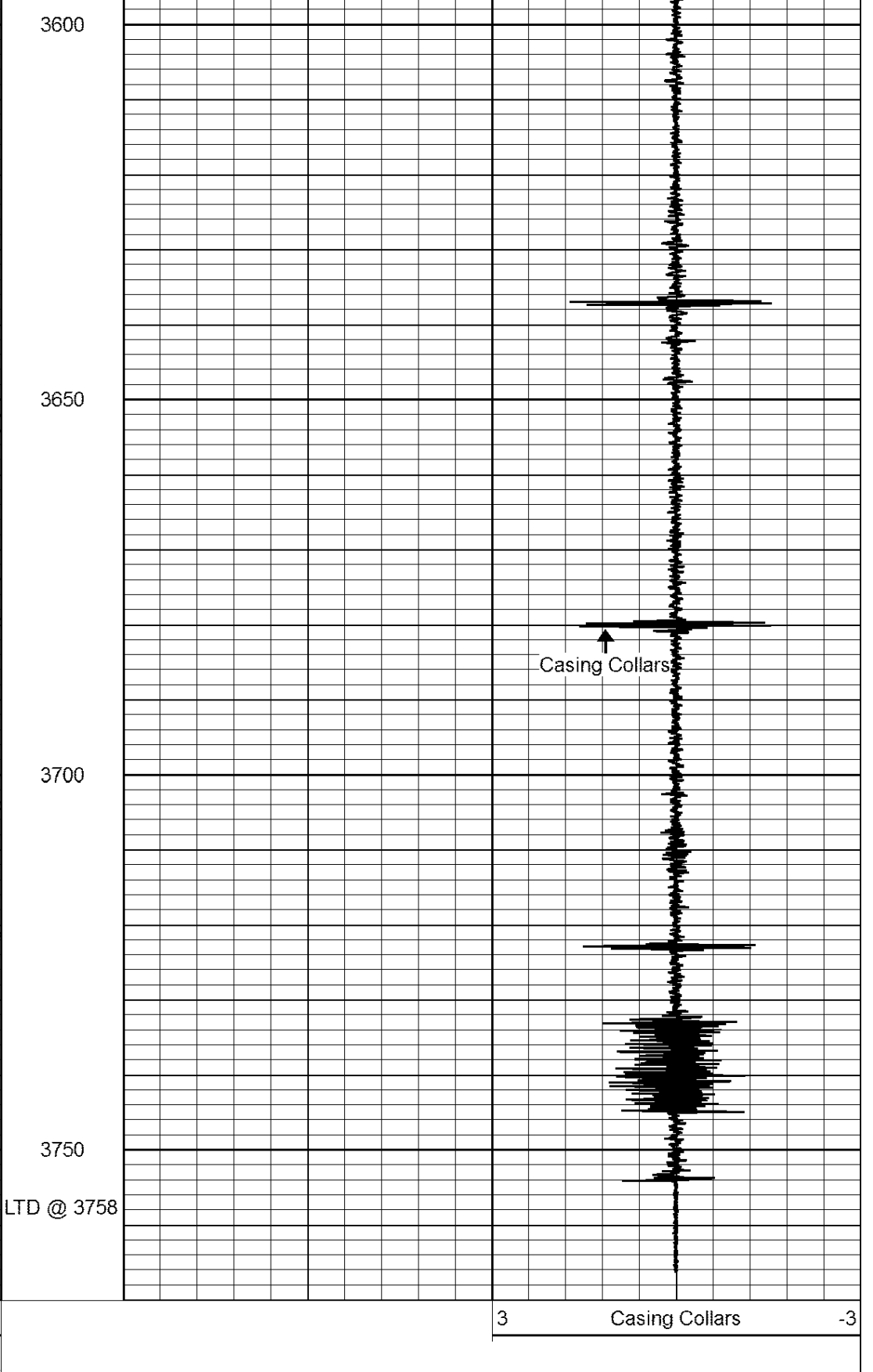
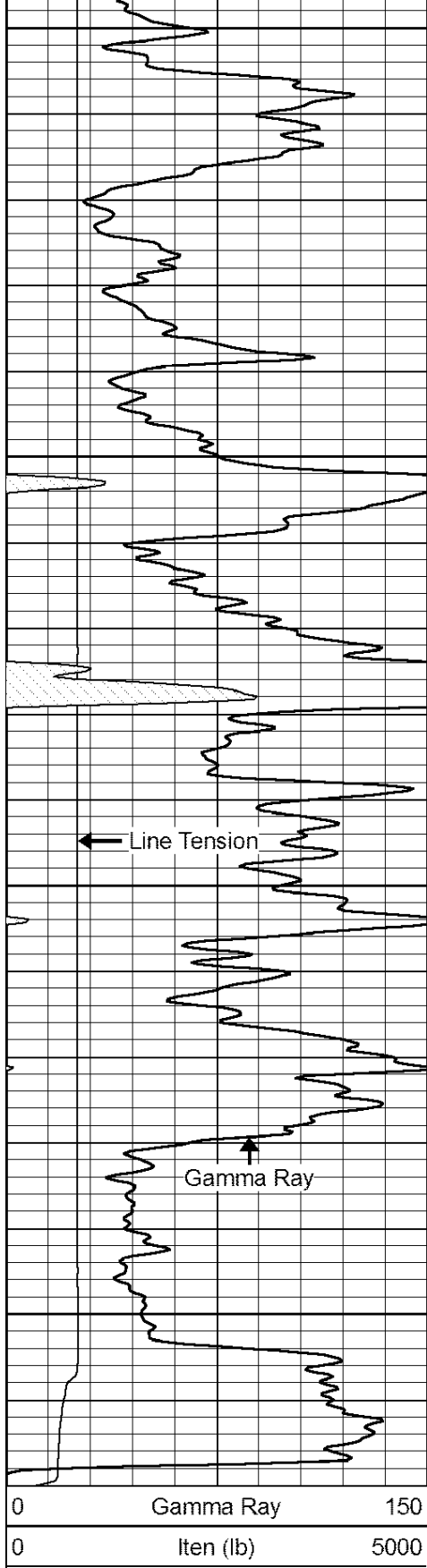
3400

3450

3500

3550

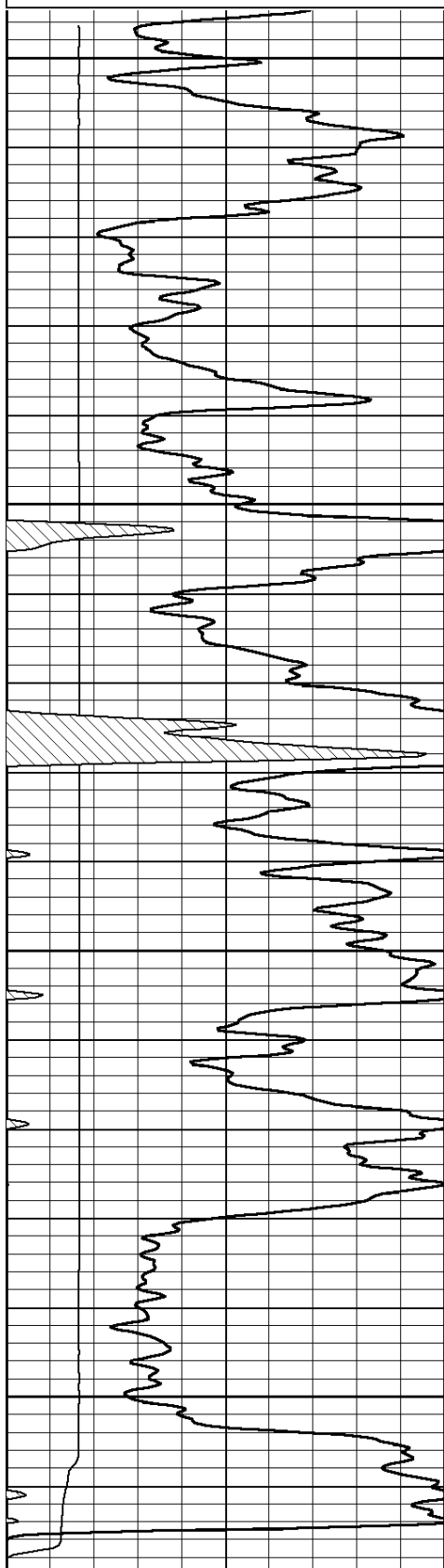




Repeat Section

0 Gamma Ray 150
0 lten (lb) 5000

3 Casing Collars -3

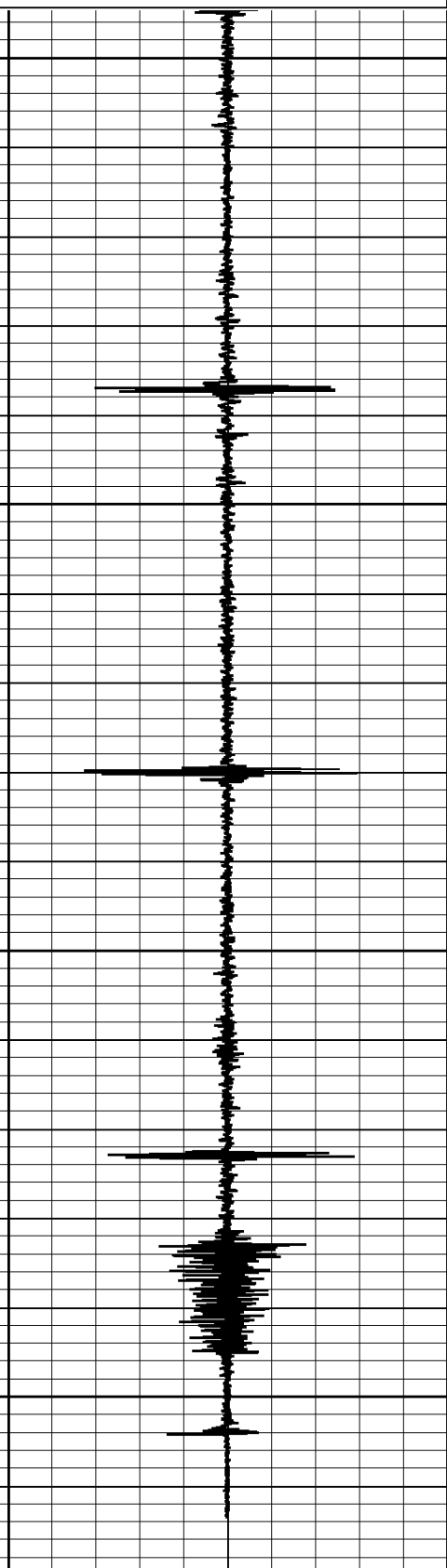
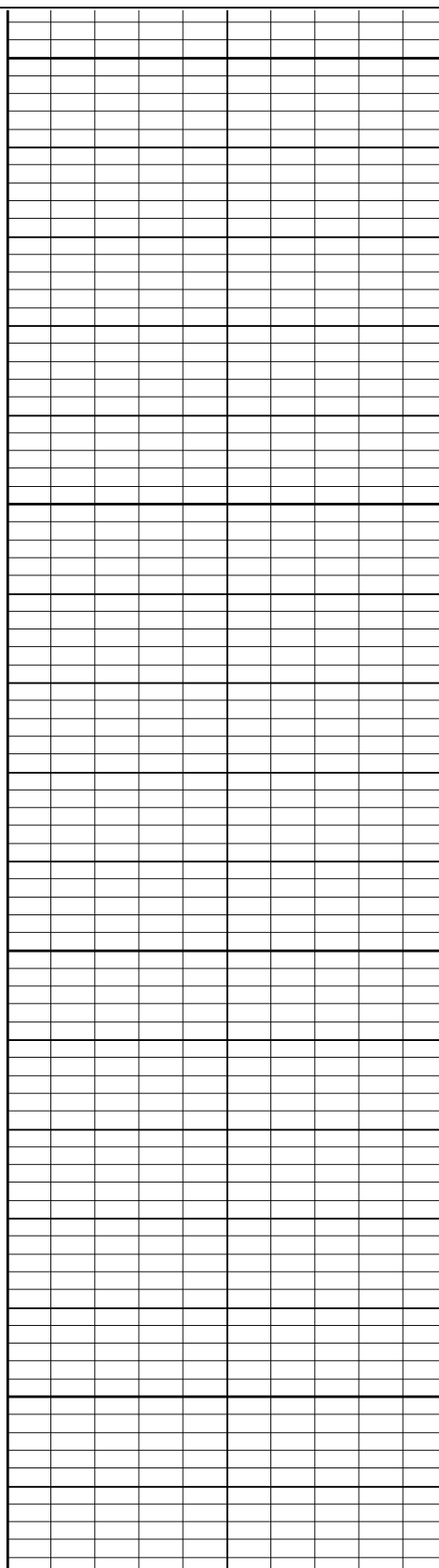


3600

3650

3700

3750



0 Gamma Ray 150
0 lten (lb) 5000

3 Casing Collars -3

