



SUPERIOR
Hays,
Kansas

COMPENSATED
DENSITY / NEUTRON
LOG

Company MAI OIL OPERATIONS, INC.
 Well SCHMITT #1
 Field KENNEBEC
 County RUSSELL
 State KANSAS

Company MAI OIL OPERATIONS, INC.
 Well SCHMITT #1
 Field KENNEBEC
 County RUSSELL State KANSAS

Location: API # : 15-167-23772-0000
 1975' FSL & 1355' FEL
 NE - SE - NW - SE
 SEC 4 TWP 15S RGE 14W
 Permanent Datum GROUND LEVEL Elevation 1758
 Log Measured From KELLY BUSHING 8' A.G.L.
 Drilling Measured From KELLY BUSHING
 Other Services DIL/MEL
 Elevation
 K.B. 1766
 D.F. 1764
 G.L. 1758

Date	2/21/12		
Run Number	ONE		
Depth Driller	3315		
Depth Logger	3314		
Bottom Logged Interval	3290		
Top Log Interval	2200		
Casing Driller	8 5/8"@390'		
Casing Logger	388		
Bit Size	7 7/8"		
Type Fluid in Hole	CHEMICAL MUD	CHLORIDES 6,800 PPM	
Density / Viscosity	9.2/66		
pH / Fluid Loss	10.0/8.0		
Source of Sample	FLOWLINE		
Rm @ Meas. Temp	.500@70F		
Rmt @ Meas. Temp	.375@70F		
Rmc @ Meas. Temp	.600@70F		
Source of Rmf / Rmc	MEASUREMENT		
Rm @ BHT	.318@110F		
Time Circulation Stopped	2 HOURS		
Time Logger on Bottom	12:30 P.M.		
Maximum Recorded Temperature	110F		
Equipment Number	4010		
Location	HAYS, KANSAS		
Recorded By	JEFF LUEBBERS		
Witnessed By	JOSH AUSTIN		

<<< Fold Here >>>

All interpretations are opinions based on inferences from electrical or other measurements and we cannot and do not guarantee the accuracy or correctness of any interpretation, and we shall not, except in the case of gross or willful negligence on our part, be liable or responsible for any loss, costs, damages, or expenses incurred or sustained by anyone resulting from any interpretation made by any of our officers, agents or employees. These interpretations are also subject to our general terms and conditions set out in our current Price Schedule.

Comments

THANK YOU FOR USING SUPERIOR WELL SERVICE HAYS, KANSAS (785) 628-6395
 DIRECTIONS
 RUSSELL, KS. & I-70, 7S. ON HWY 281 TO "WALTERS RD.", 1 1/4W., S. INTO

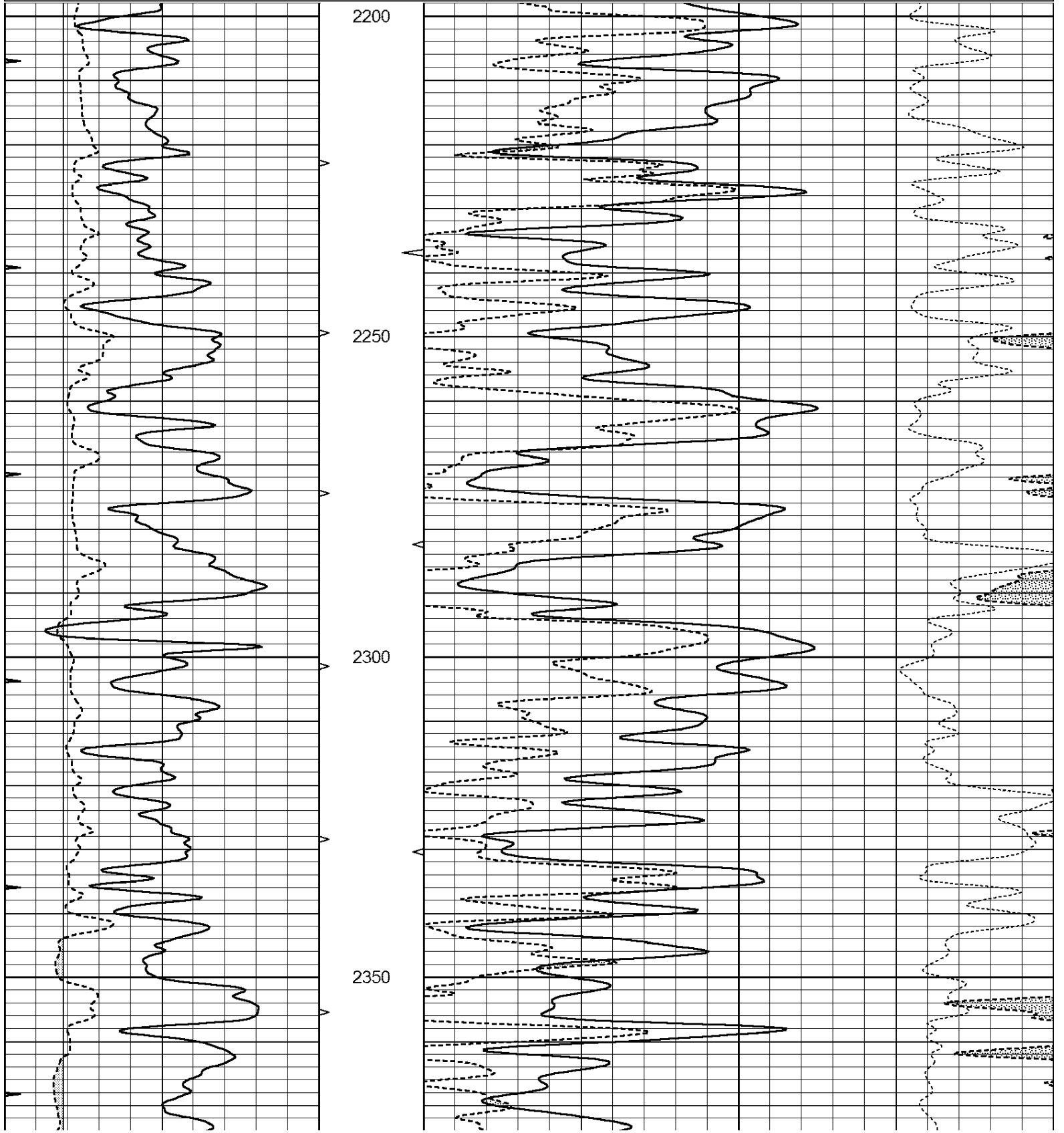


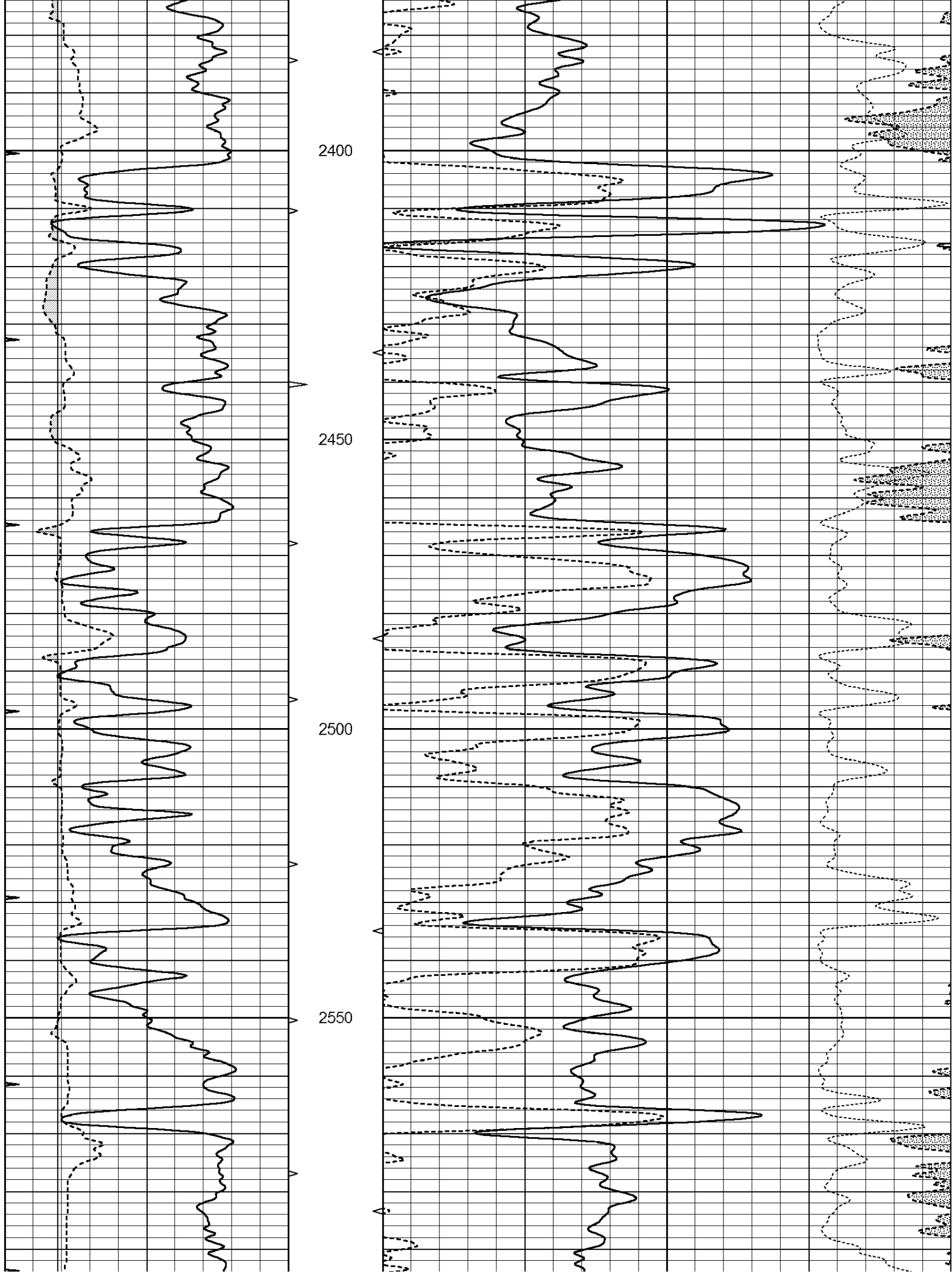
SUPERIOR
Hays,
Kansas

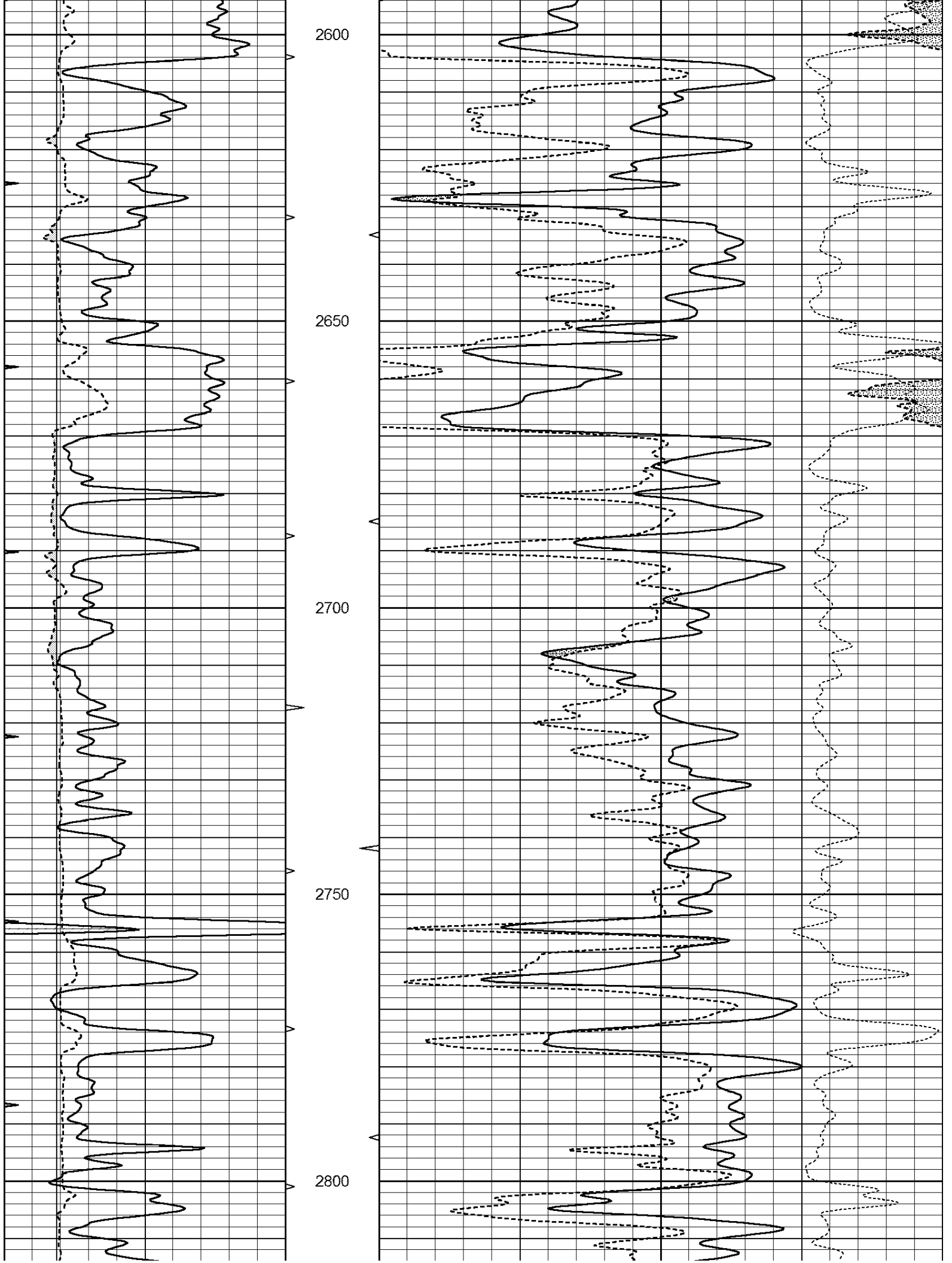
MAIN SECTION

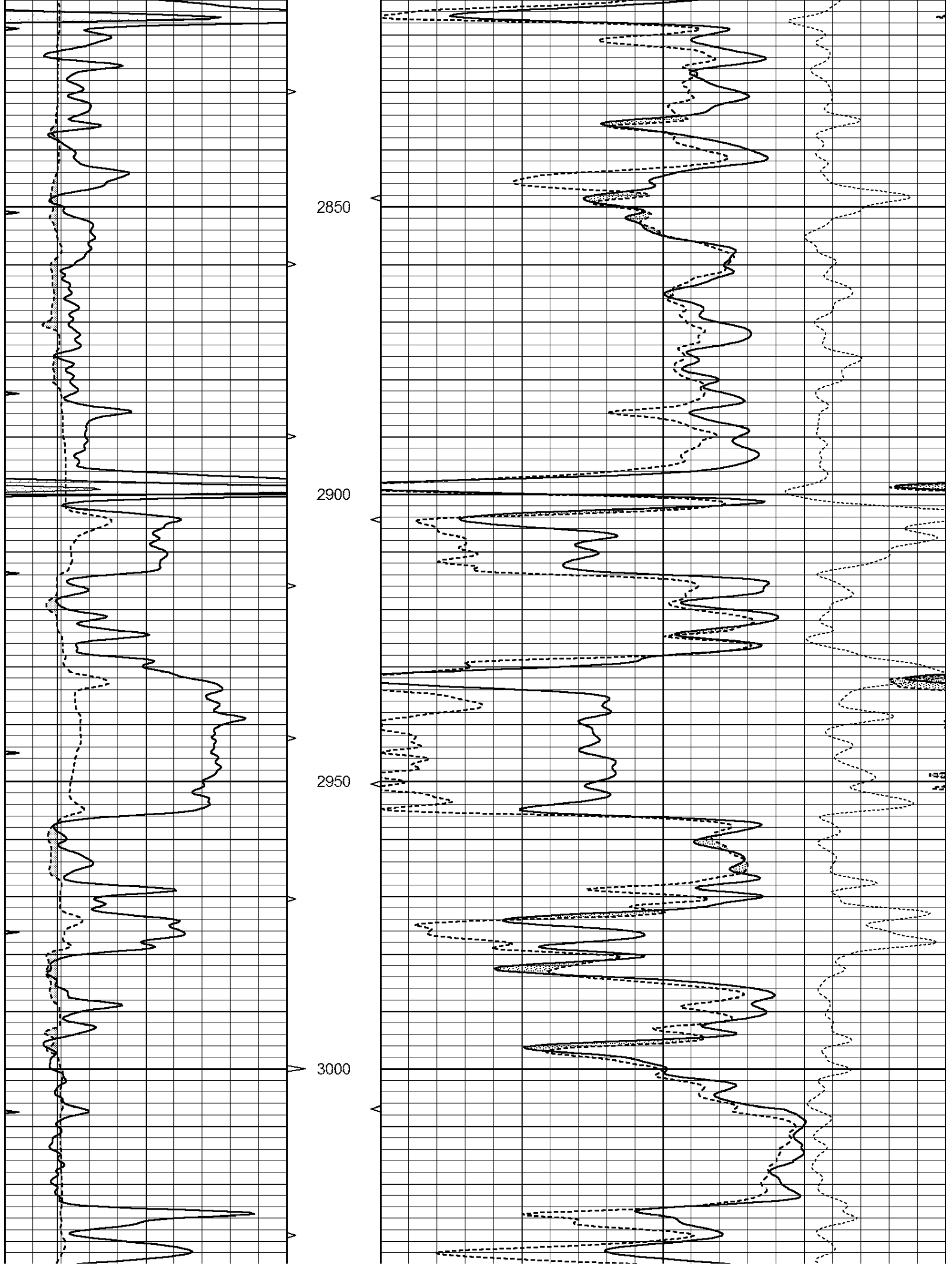
Database File: 408415ddn.db
 Dataset Pathname: pass3.4
 Presentation Format: den_neu
 Dataset Creation: Tue Feb 21 13:48:32 2012
 Charted by: Depth in Feet scaled 1:240

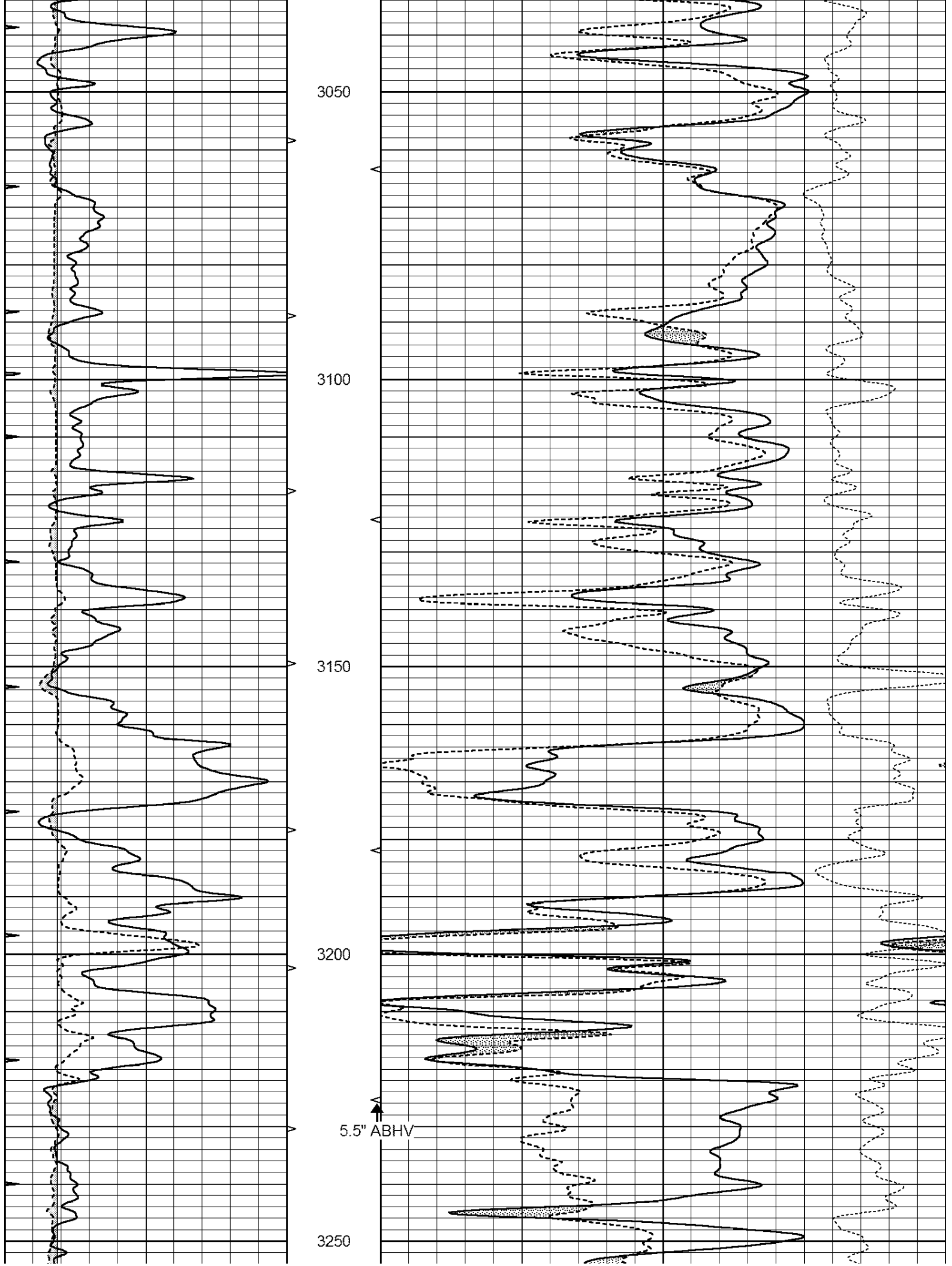
0	GAMMA RAY (GAPI)	150	ABHV	30	COMPENSATED DENSITY (pu)	-10
6	CALIPER (in)	16	10 (ft3)	0 30	COMPENSATED NEUTRON (pu)	-10
0	MINMK	20	TBHV		-0.25 CORRECTION (g/cc)	0.25
			0 (ft3)	10		

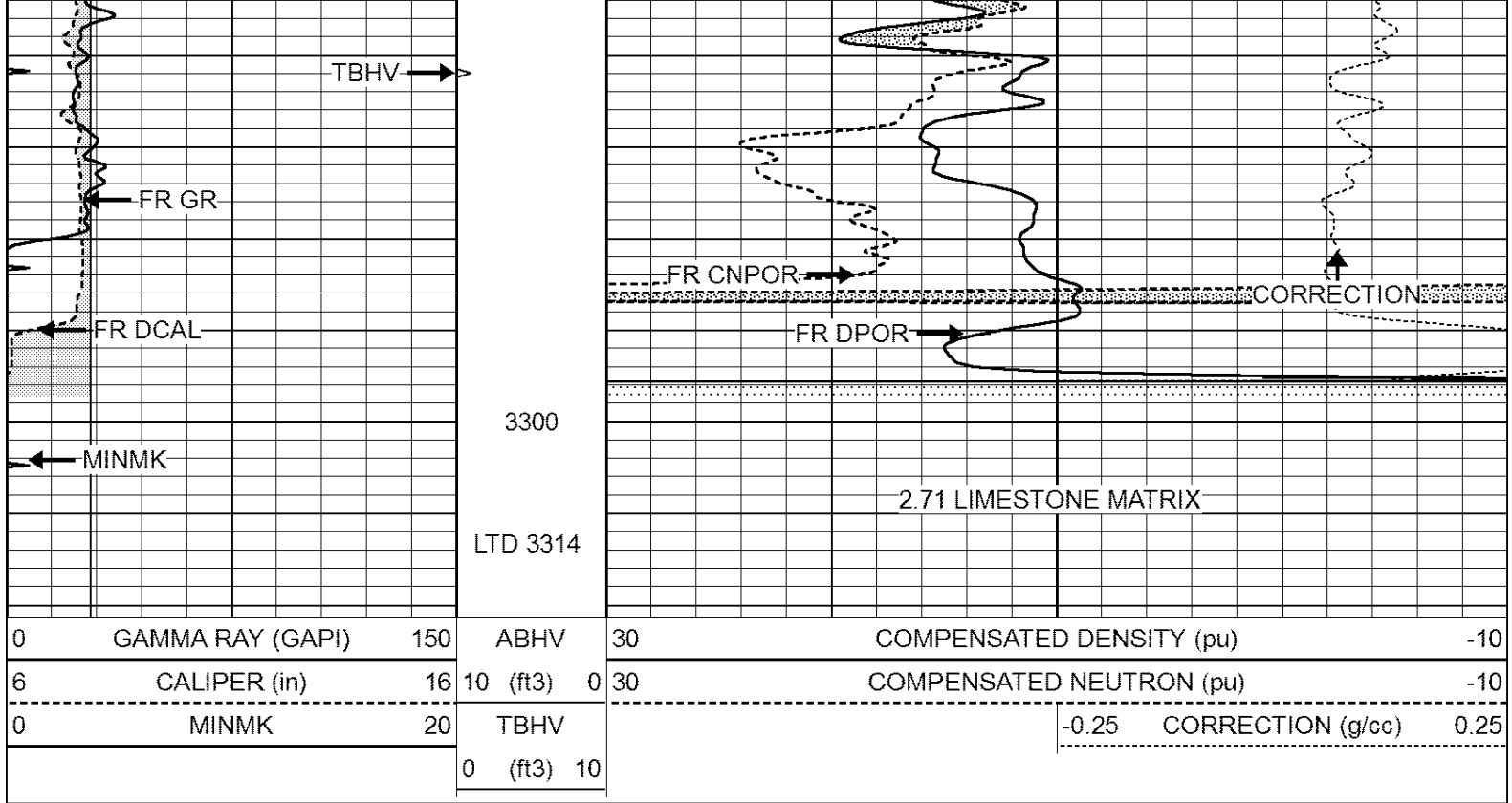










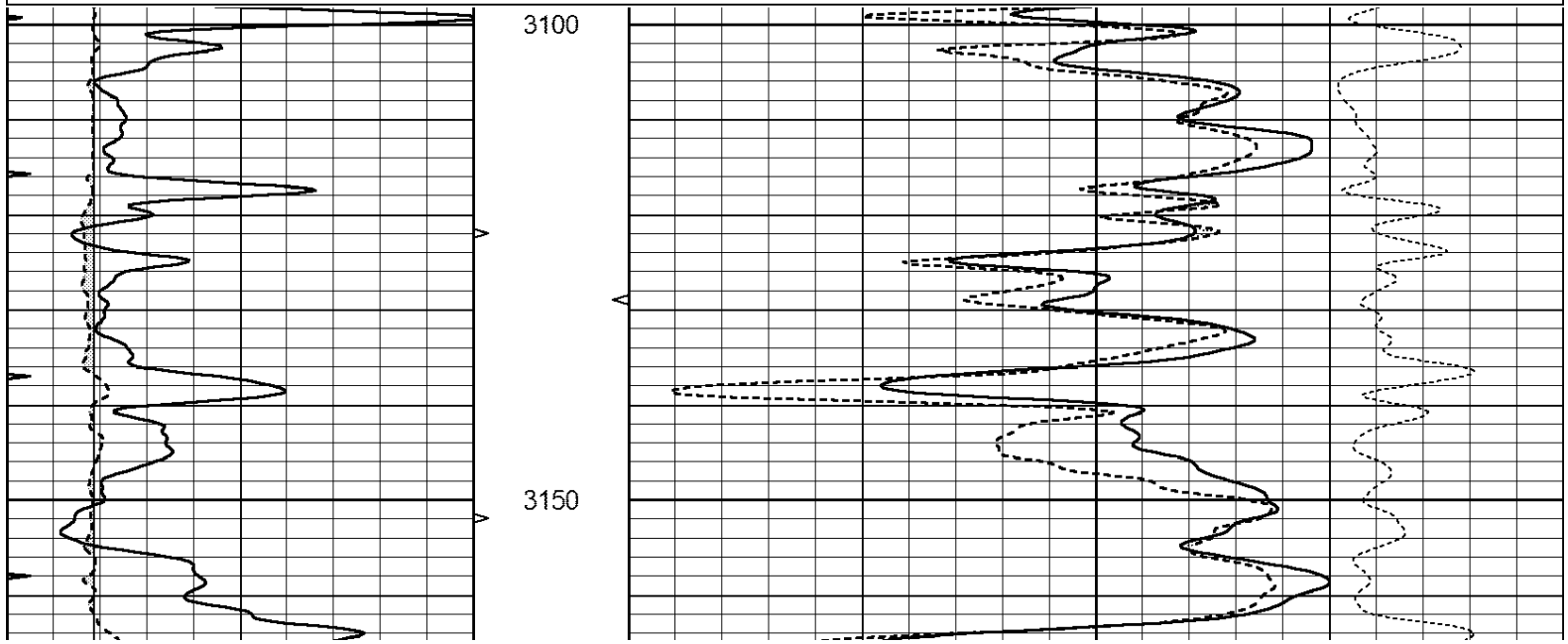


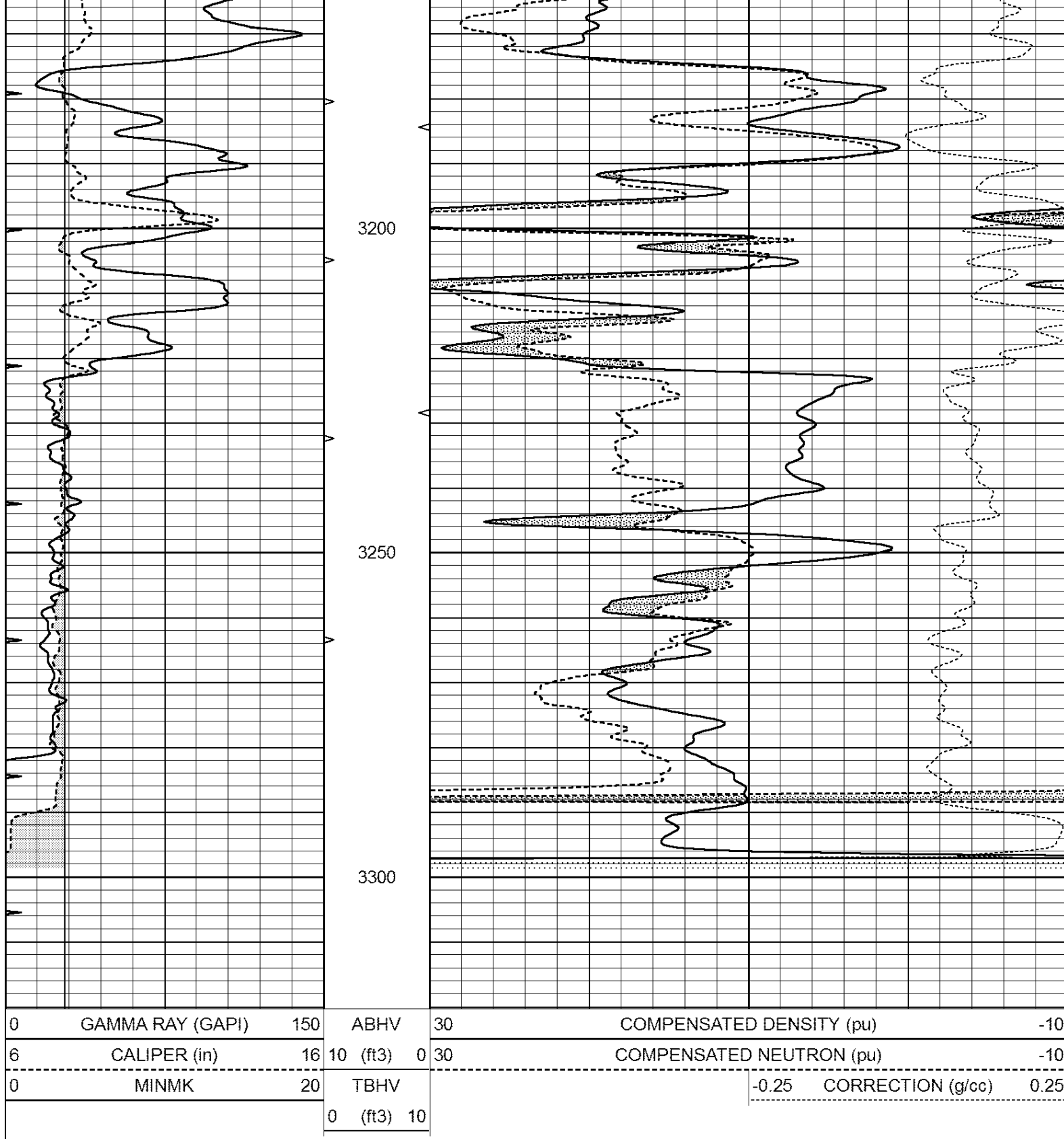
SUPERIOR
Hays,
Kansas

REPEAT SECTION

Database File: 408415ddn.db
 Dataset Pathname: pass2.6
 Presentation Format: den_neu
 Dataset Creation: Tue Feb 21 13:22:23 2012 by Calc Open-Cased 110302
 Charted by: Depth in Feet scaled 1:240

0	GAMMA RAY (GAPI)	150	ABHV	30	COMPENSATED DENSITY (pu)	-10	
6	CALIPER (in)	16	10 (ft3)	0 30	COMPENSATED NEUTRON (pu)	-10	
0	MINMK	20	TBHV		-0.25	CORRECTION (g/cc)	0.25
			0 (ft3)	10			



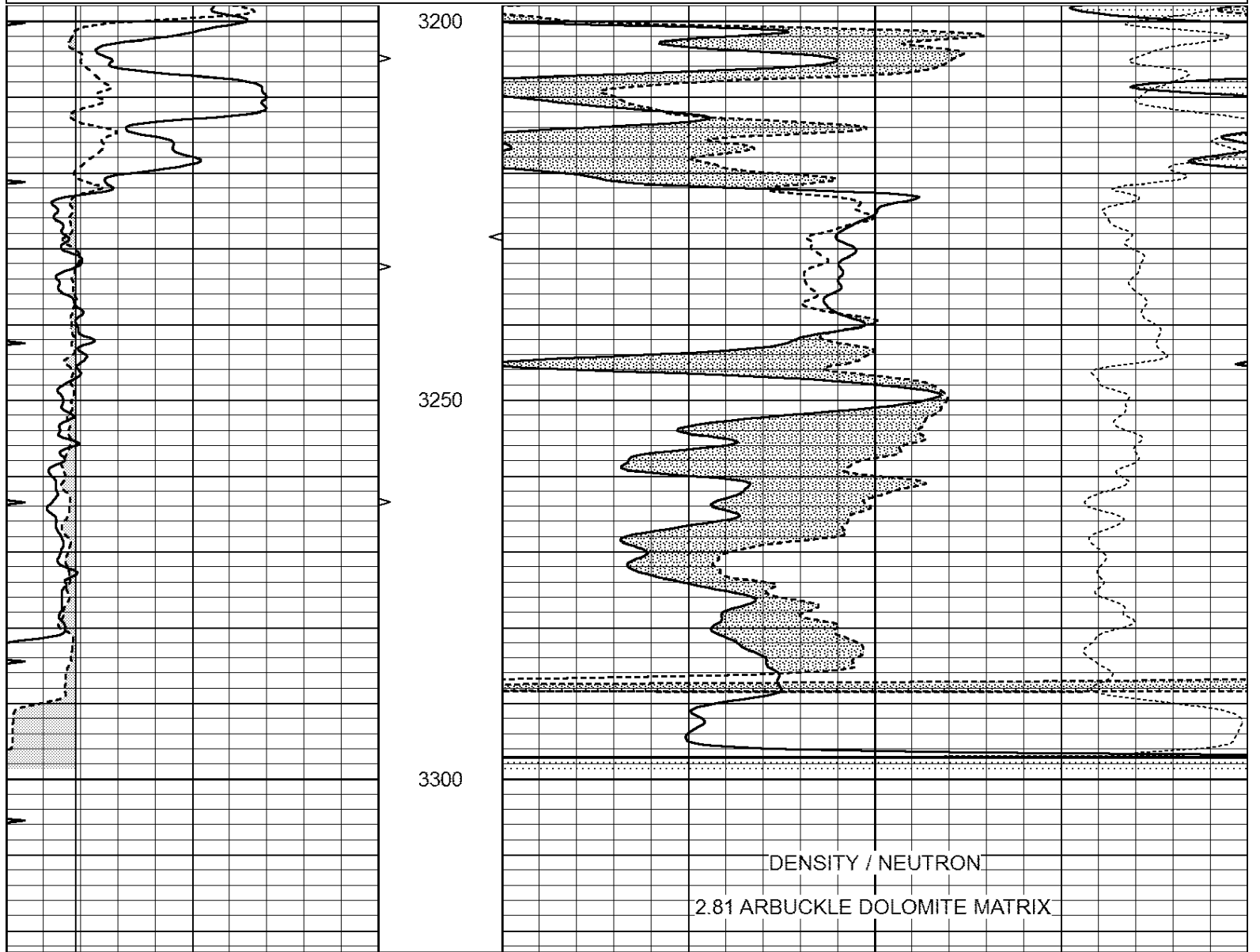


SUPERIOR
Hays,
Kansas

DOLOMITE MATRIX

Database File: 408415ddn.db
 Dataset Pathname: pass2.4
 Presentation Format: den_neu
 Dataset Creation: Tue Feb 21 12:51:01 2012
 Charted by: Depth in Feet scaled 1:240

0	GAMMA RAY (GAPI)	150	ABHV	30	COMPENSATED DENSITY (pu)	-10
6	CALIPER (in)	16	10 (ft3)	0 30	COMPENSATED NEUTRON (pu)	-10
0	MINMK	20	TBHV		-0.25 CORRECTION (g/cc)	0.25
			0 (ft3)	10		



0	GAMMA RAY (GAPI)	150	ABHV	30	COMPENSATED DENSITY (pu)	-10
6	CALIPER (in)	16	10 (ft3)	0 30	COMPENSATED NEUTRON (pu)	-10
0	MINMK	20	TBHV		-0.25 CORRECTION (g/cc)	0.25
			0 (ft3)	10		

Calibration Report

Database File: 408415ddn.db
 Dataset Pathname: pass3.4
 Dataset Creation: Tue Feb 21 13:48:32 2012

Dual Induction Calibration Report

Serial-Model: DIL4-GEAR
 Performed: Tue Feb 14 15:45:17 2012

Readings			References			Results	
Loop:	Air	Loop	Air	Loop	m	b	
Deep	0.008	0.666	0.000	400.000	mmho/m	570.000	0.000

Deep	0.000	0.000	V	0.000	462.500	mmho/m	570.000	0.000
Medium	-0.003	0.769	V	0.000	462.500	mmho/m	560.000	4.000
Internal:	Zero	Cal		Zero	Cal		m	b
Deep	0.013	0.651	V	0.000	400.000	mmho/m	627.541	-8.365
Medium	0.020	0.754	V	0.000	462.500	mmho/m	630.311	-12.549

Litho Density Calibration Report
Serial: 003N Model: PRB
Performed Tue Sep 08 14:14:44 2009

Litho Density Calibration

	Background	Magnesium	Aluminum	Sandstone	
Window 1	2042.6	12312.8	4225.8	13758.4	cps
Window 2	1855.8	10134.7	3624.2	11113.1	cps
Window 3	1639.4	6760.2	2716.3	7260.3	cps
Window 4	466.4	469.2	466.1	476.5	cps
Long Space	0.0	8278.9	1768.4	9257.4	cps
Short Space	2.2	2377.3	1544.1	2574.2	cps
Rho		1.7100	2.5900	1.3800	g/cc
Pe			2.5700	1.5500	
Rib Angle	: 44.4	Rib Slope	: 0.979	Density/Spine Ratio	: 0.549
Spine Angle	: 74.4	Spine Slope	: 3.577	Spine Intercept	: -18.8

Caliper

	Readings	Reference	
Low Ref	2.0	7.3	
High Ref	4.0	15.0	
Gain: 3.8			Offset: -0.1

Compensated Neutron Calibration Report

Serial Number: 070808
Tool Model: Probe

PRE-SURVEY VERIFICATION

Detector	Readings	Measured	Target
Short Space	cps		
Long Space	cps	pu	pu

POST-SURVEY VERIFICATION

Detector	Readings	Measured	Target
Short Space	cps		
Long Space	cps	pu	pu

Gamma Ray Calibration Report

Serial Number: 070559
Tool Model: OPEN_GR
Performed: Tue Feb 21 13:32:46 2012

Calibrator Value: 1.0 GAPI

Background Reading: 0.0 cps
Calibrator Reading: 1.0 cps

Sensitivity: 0.3000 GAPI/cps