



SUPERIOR
Hays,
Kansas

MICRO
LOG

Company MAI OIL OPERATIONS, INC.
Well SCHMITT #1
Field KENNEBEC
County RUSSELL
State KANSAS

Company MAI OIL OPERATIONS, INC.
Well SCHMITT #1
Field KENNEBEC
County RUSSELL State KANSAS

Location: API # : 15-167-23772-0000
1975' FSL & 1355' FEL
NE - SE - NW - SE
SEC 4 TWP 15S RGE 14W
Permanent Datum GROUND LEVEL Elevation 1758
Log Measured From KELLY BUSHING 8' A.G.L.
Drilling Measured From KELLY BUSHING
Other Services
CDL/CNL
DIL
Elevation
K.B. 1766
D.F. 1764
G.L. 1758

Date	2/21/12		
Run Number	TWO		
Depth Driller	3315		
Depth Logger	3314		
Bottom Logged Interval	3312		
Top Log Interval	2200		
Casing Driller	8 5/8"@390'		
Casing Logger	388		
Bit Size	7 7/8"		
Type Fluid in Hole	CHEMICAL MUD	CHLORIDES 6,800 PPM	
Density / Viscosity	9.2/66		
pH / Fluid Loss	10.0/8.0		
Source of Sample	FLOWLINE		
Rm @ Meas. Temp	.500@70F		
Rmt @ Meas. Temp	.375@70F		
Rmc @ Meas. Temp	.600@70F		
Source of Rmf / Rmc	MEASUREMENT		
Rm @ BHT	.318@110F		
Time Circulation Stopped	3.5 HOURS		
Time Logger on Bottom	12:30 P.M.		
Maximum Recorded Temperature	110F		
Equipment Number	4010		
Location	HAYS, KANSAS		
Recorded By	JEFF LUEBBERS		
Witnessed By	JOSH AUSTIN		

<<< Fold Here >>>

All interpretations are opinions based on inferences from electrical or other measurements and we cannot and do not guarantee the accuracy or correctness of any interpretation, and we shall not, except in the case of gross or willful negligence on our part, be liable or responsible for any loss, costs, damages, or expenses incurred or sustained by anyone resulting from any interpretation made by any of our officers, agents or employees. These interpretations are also subject to our general terms and conditions set out in our current Price Schedule.

Comments

THANK YOU FOR USING SUPERIOR WELL SERVICE HAYS, KANSAS (785) 628-6395
DIRECTIONS
RUSSELL, KS. & I-70, 7S. ON HWY 281 TO "WALTERS RD.", 1 1/4W., S. INTO

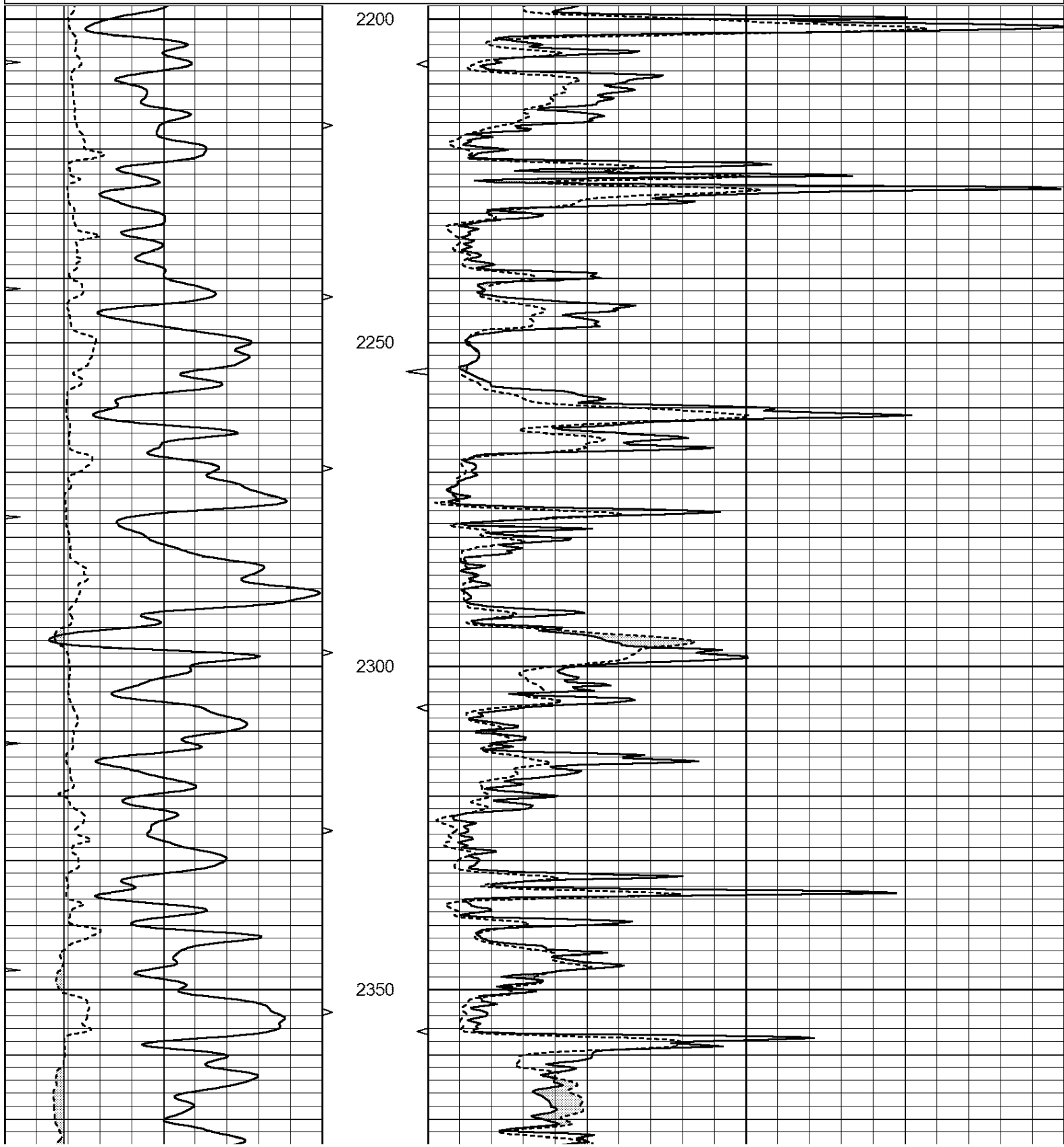


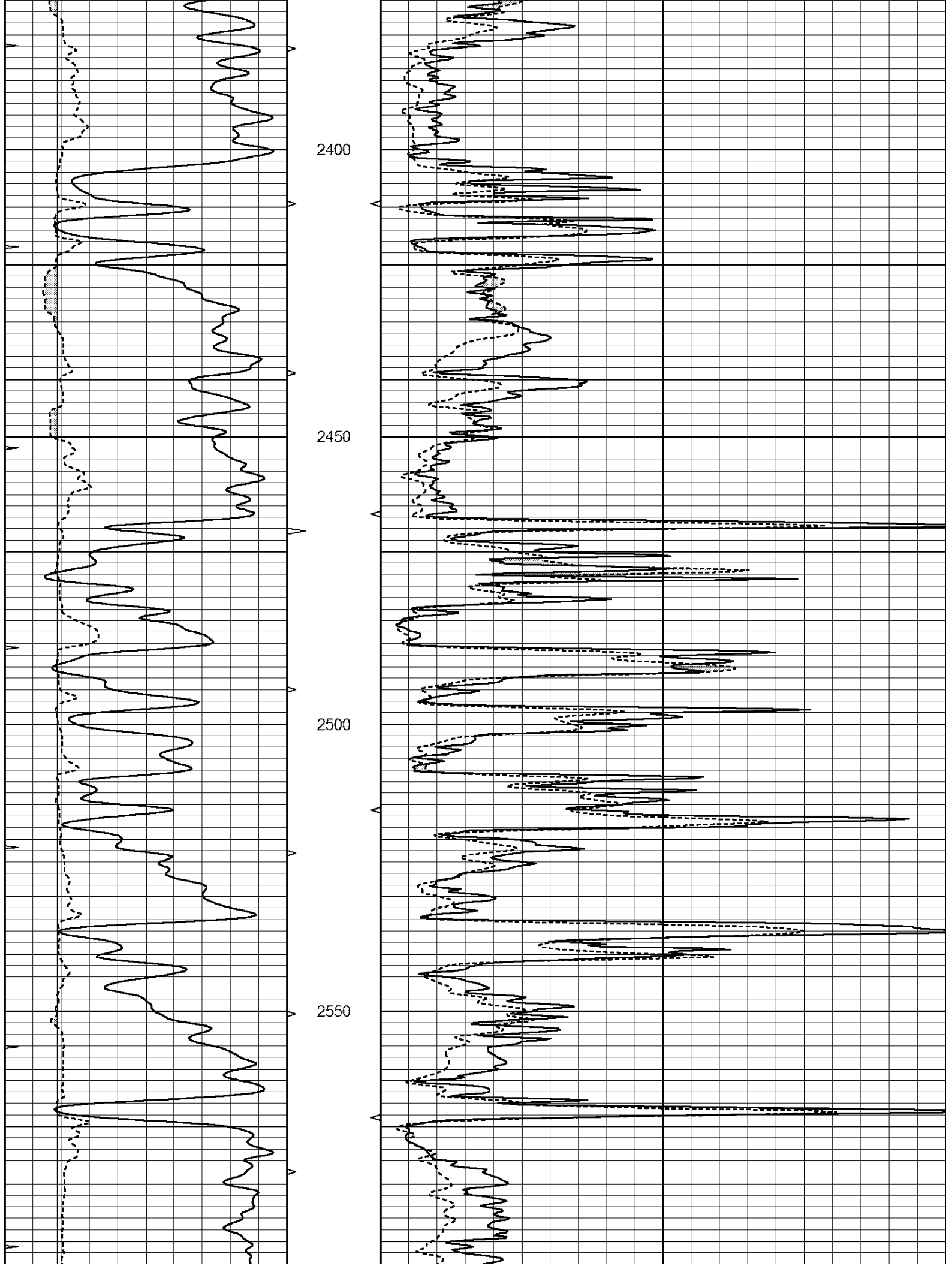
SUPERIOR
Hays,
Kansas

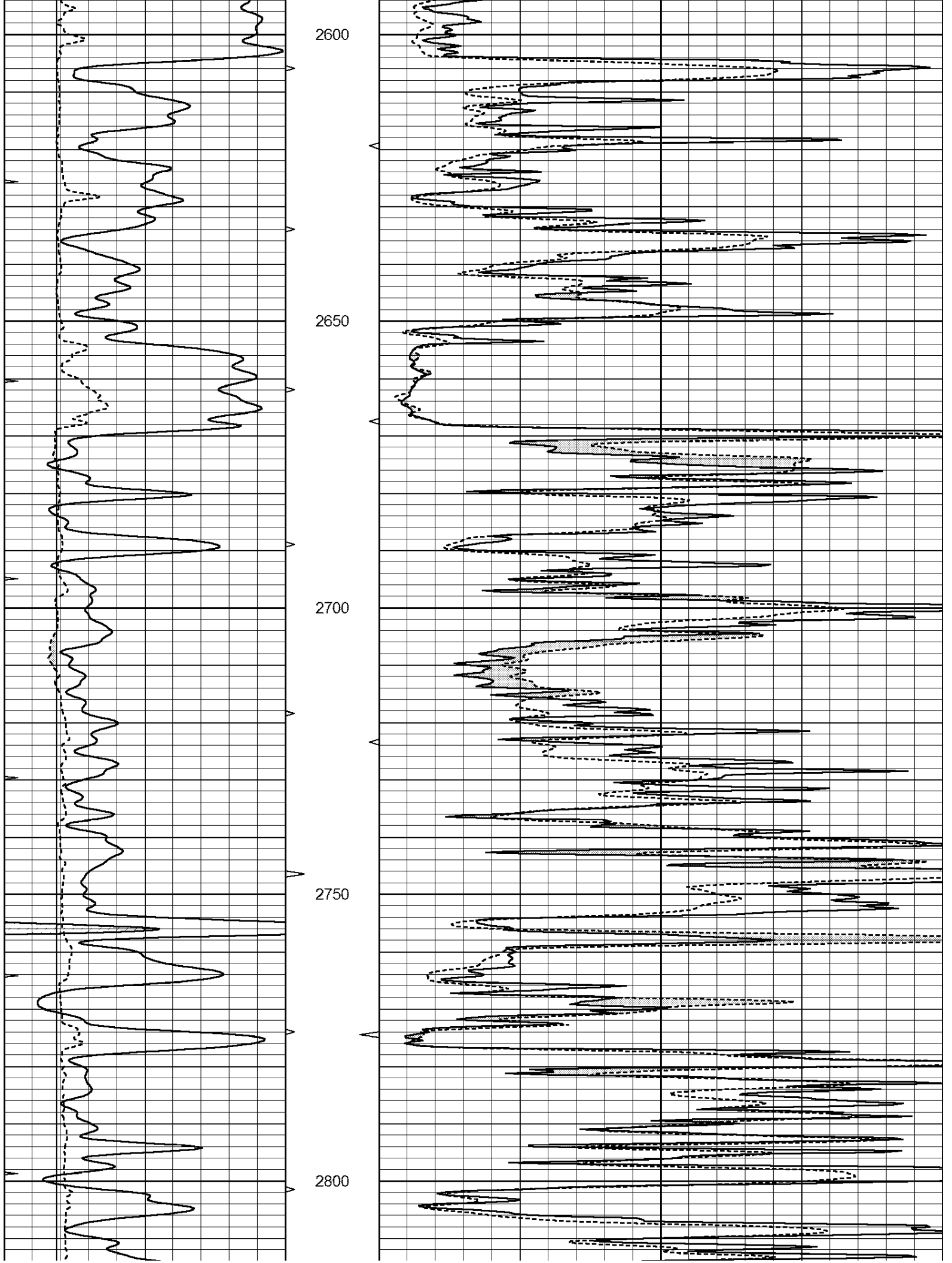
MAIN SECTION

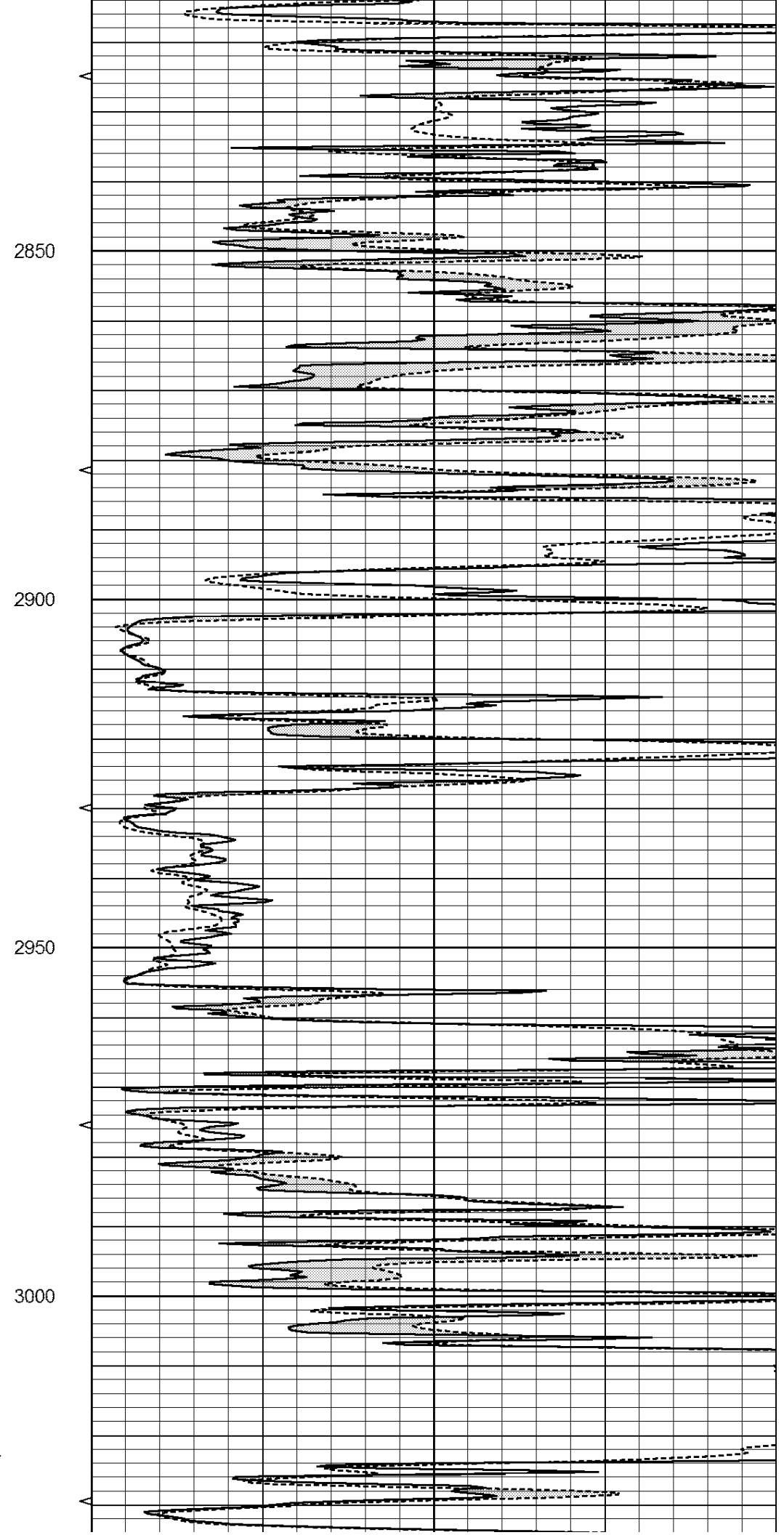
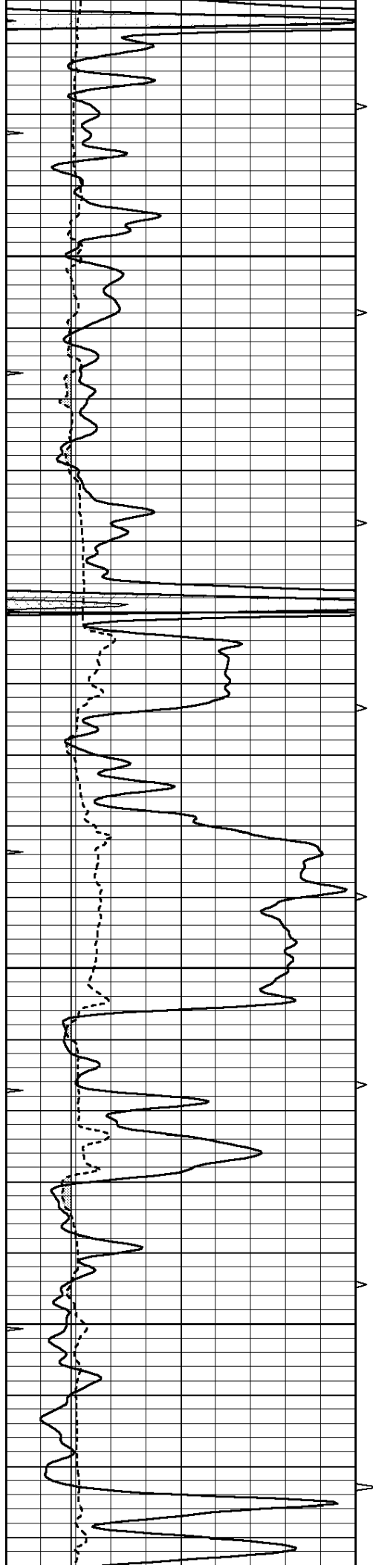
Database File: 408415ddn.db
 Dataset Pathname: pass6.4
 Presentation Format: micro
 Dataset Creation: Tue Feb 21 15:17:11 2012
 Charted by: Depth in Feet scaled 1:240

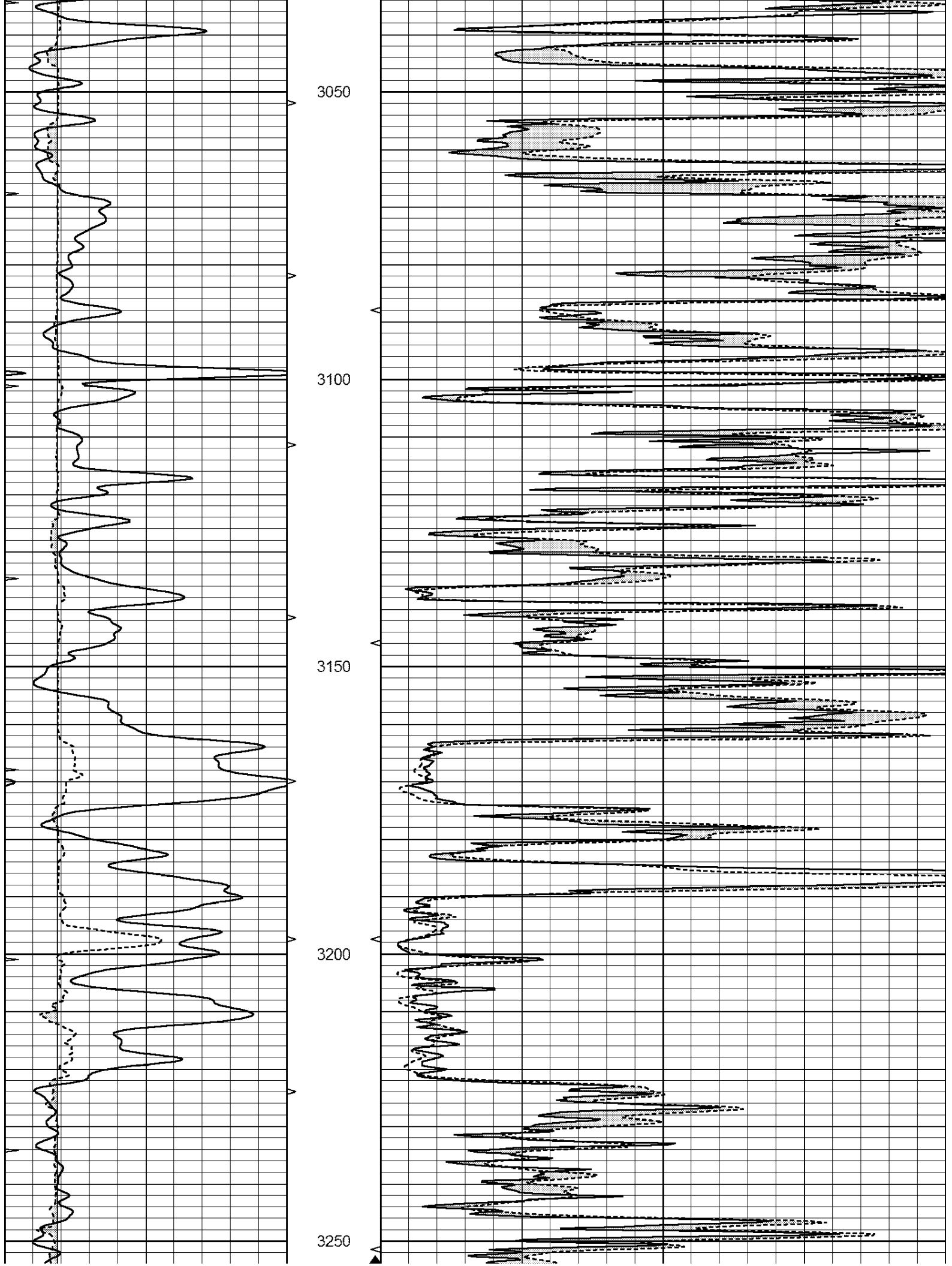
0	GAMMA RAY (GAPI)	150	ABHV	0	MEL1.5 (Ohm-m)	40
6	CALIPER (in)	16	10 (ft3)	0	MEL2.0 (Ohm-m)	40
0	MINMK	20	TBHV			
			0 (ft3)	10		

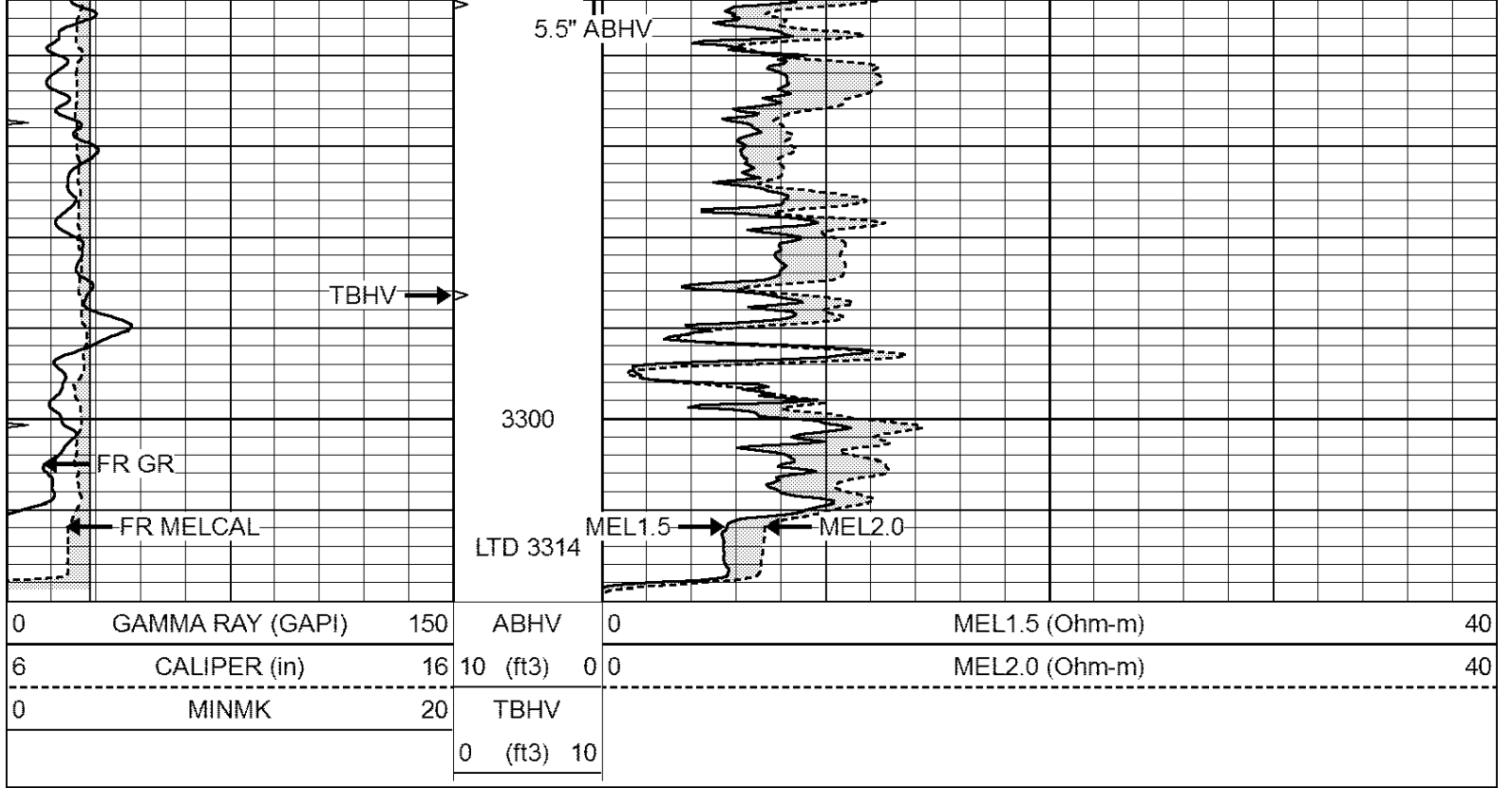












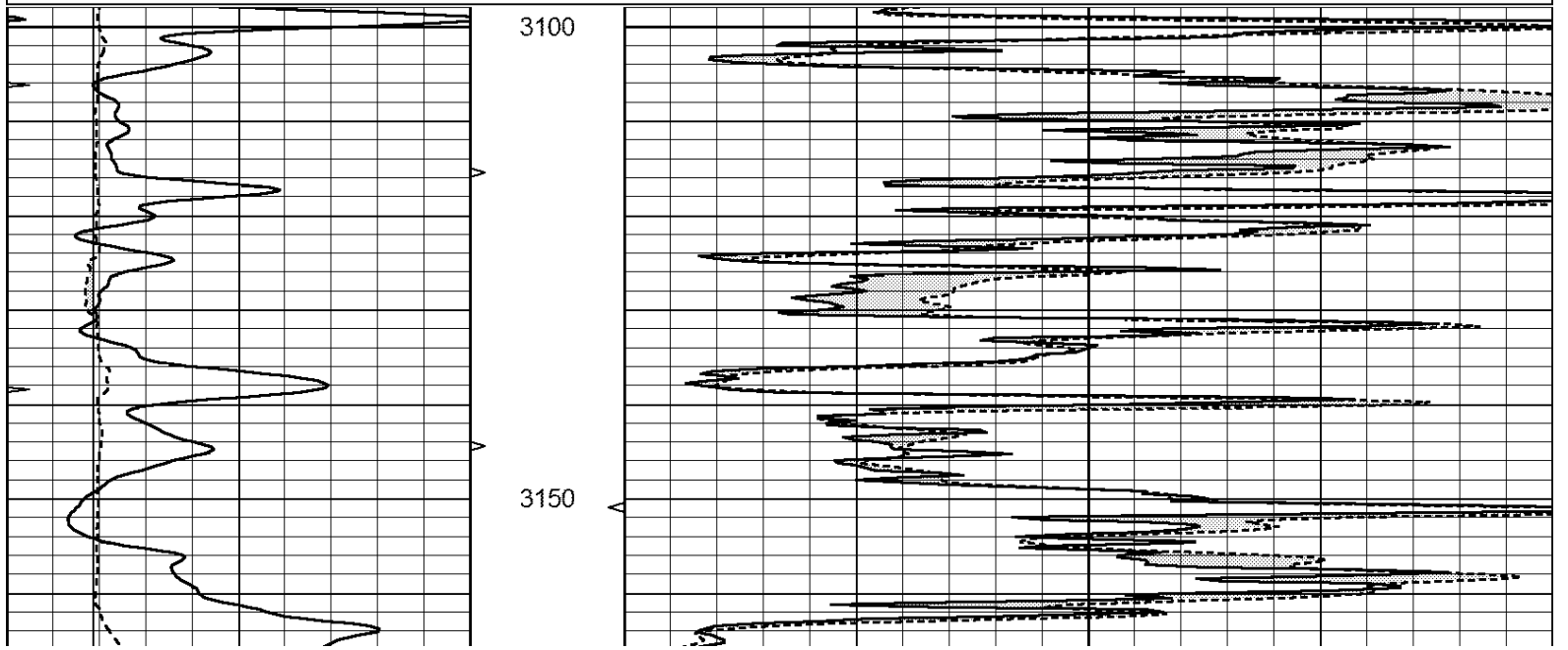

SUPERIOR
WELL SERVICES

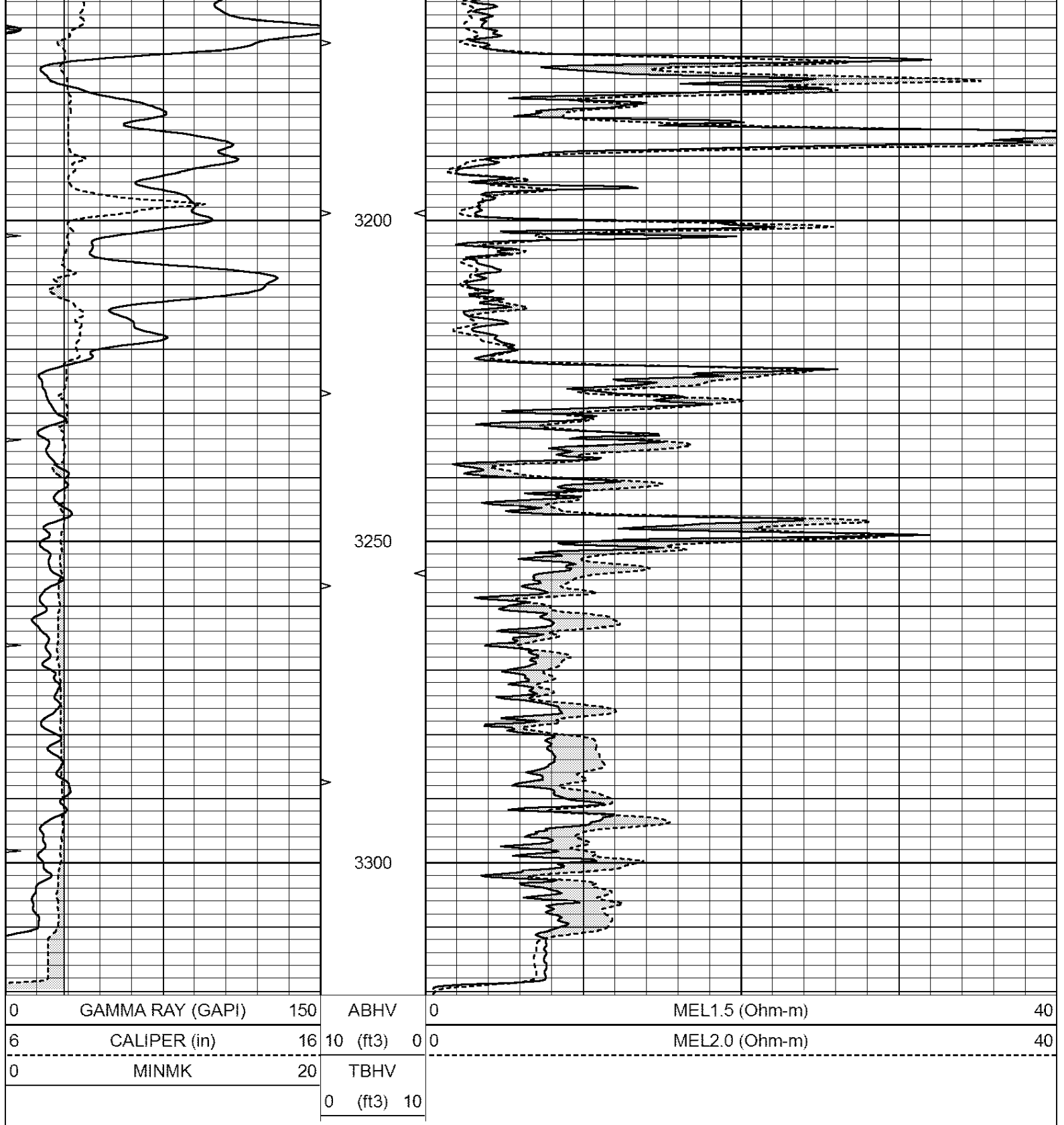
SUPERIOR
Hays,
Kansas

REPEAT SECTION

Database File: 408415ddn.db
 Dataset Pathname: pass5.3
 Presentation Format: micro
 Dataset Creation: Tue Feb 21 14:51:40 2012 by Calc Open-Cased 110302
 Charted by: Depth in Feet scaled 1:240

0	GAMMA RAY (GAPI)	150	ABHV	0	MEL1.5 (Ohm-m)	40
6	CALIPER (in)	16	10 (ft3)	0	MEL2.0 (Ohm-m)	40
0	MINMK	20	TBHV			
			0 (ft3)	10		





Calibration Report

Database File: 408415ddn.db
 Dataset Pathname: pass6.4
 Dataset Creation: Tue Feb 21 15:17:11 2012

MICRO Calibration Report

Serial Number: 2
 Tool Model: PROBE
 Performed: Mon Feb 13 13:38:47 2012

Caliper Calibration: Gain=4.398 Offset=2.528

	Low Cal	High Cal
References	7.500	15.000
Readings	1.130	2.835
1.5" Calibration:	Gain=38.000	Offset=0.000
	Low Cal	High Cal
References	0.000	20.000
Readings	0.065	1.210
2" Calibration:	Gain=60.000	Offset=0.000
	Low Cal	High Cal
References	0.000	20.000
Readings	0.012	1.043
Gamma Ray Calibration Report		
Serial Number:	GR4	
Tool Model:	OPEN	
Performed:	Tue Feb 21 14:35:22 2012	
Calibrator Value:	200.0	GAPI
Background Reading:	0.0	cps
Calibrator Reading:	189.0	cps
Sensitivity:	1.4000	GAPI/cps