



Microresistivity Log

DIGITAL LOG

(785) 625-3858

API No. 15-101-22,354-00-00	Company Larson Engineering, Inc.	Well Melita No.1-8	
	Field Wildcat	County Lane	State Kansas
	Location 629' FSL & 1405' FEL		Other Services CNL/CDL DIL
	Sec: 8	Twp: 19S	Rge: 29W
Permanent Datum Log Measured From Drilling Measured From	Ground Level Kelly Bushing Frotkelly Bushing	Elevation 2837 7 Ft. Above Perm. Datum	K.B. 2844 D.F. 2837 G.L. 2837

Date	3/13/2012
Run Number	Two
Depth Driller	4650
Depth Logger	4652
Bottom Logged Interval	4651
Top Log Interval	3600
Casing Driller	8.625 @ 262
Casing Logger	263
Bit Size	7.875
Type Fluid in Hole	Chemical
Salinity, ppm CL	1.500
Density / Viscosity	9.3 46
pH / Fluid Loss	10.0 8.4
Source of Sample	Flowline
Rm @ Meas. Temp	1.7 @ 88
Rmf @ Meas. Temp	1.28 @ 88
Rmc @ Meas. Temp	2.3 @ 88
Source of Rmf / Rmc	Charts
Rm @ BHT	1.22 @ 123
Operating Rig Time	4 Hours
Max Rec. Temp. F	123
Equipment Number	17
Location	Hays
Recorded By	C. Desaire
Witnessed By	Bob Lewellvn

<<< Fold Here >>>

All interpretations are opinions based on inferences from electrical or other measurements and we cannot and do not guarantee the accuracy or correctness of any interpretation, and we shall not, except in the case of gross or willful negligence on our part, be liable or responsible for any loss, costs, damages, or expenses incurred or sustained by anyone resulting from any interpretation made by any of our officers, agents or employees. These interpretations are also subject to our general terms and conditions set out in our current Price Schedule.

Comments

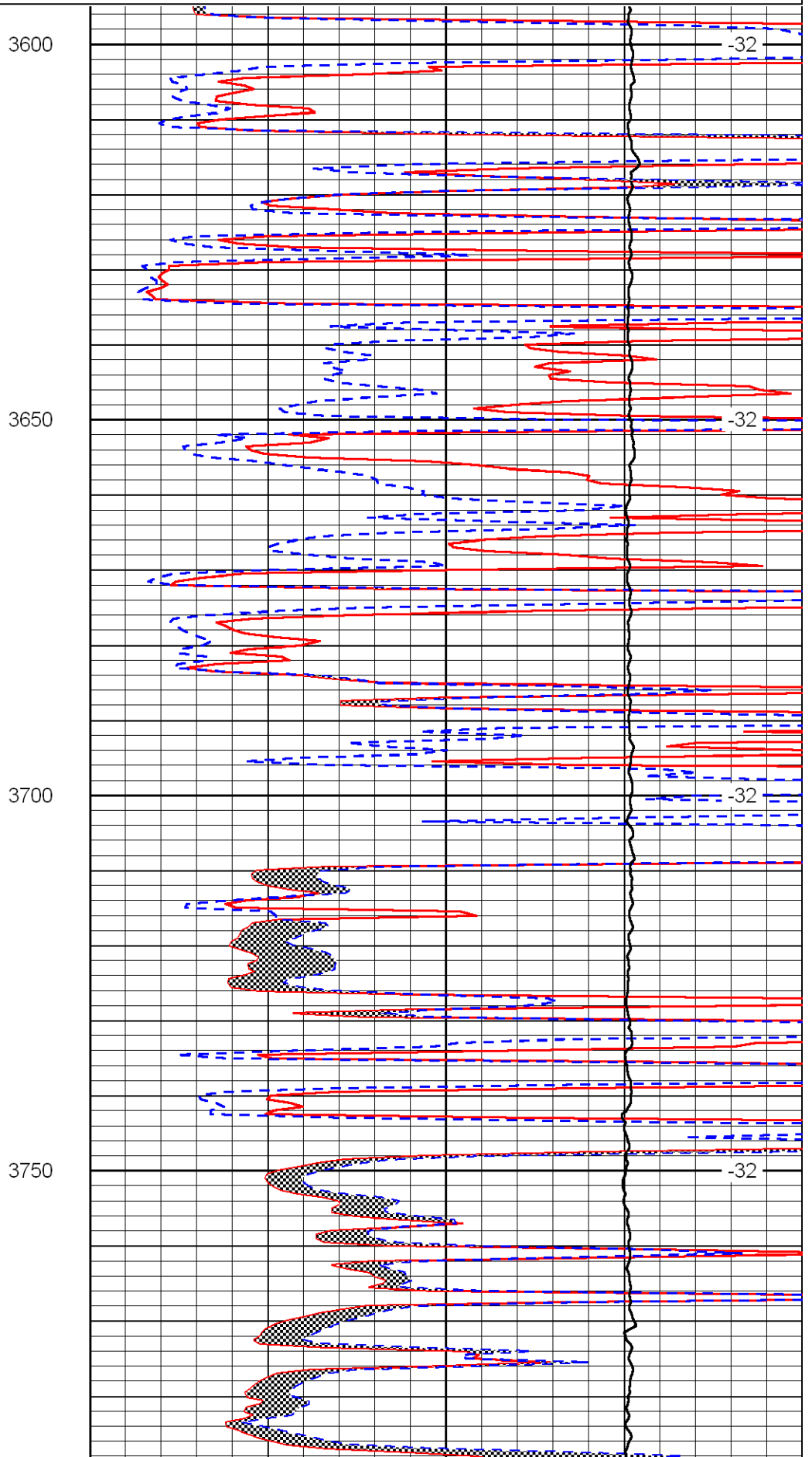
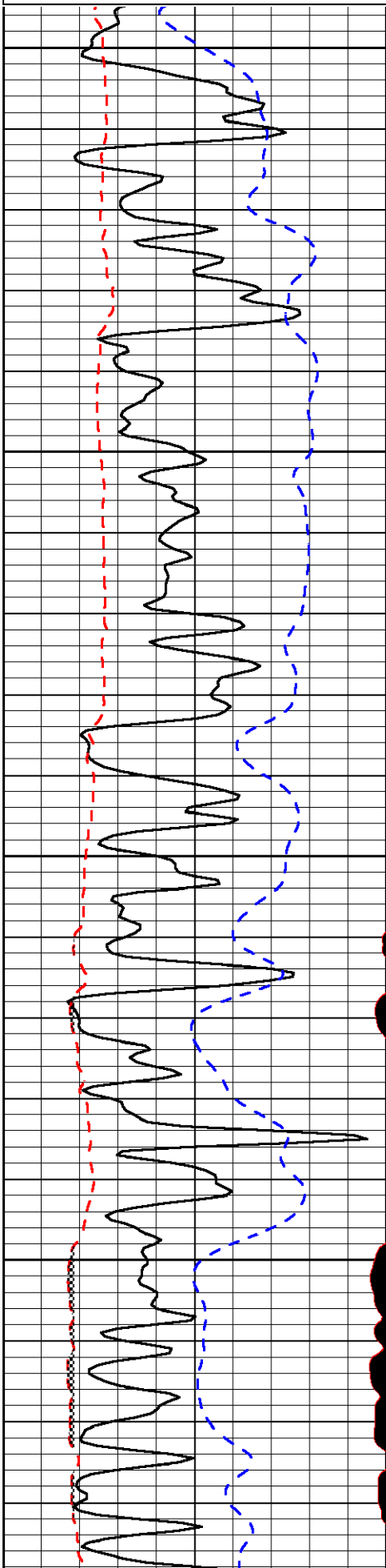
Thank you for using Log-Tech, Inc.
(785) 625-3858

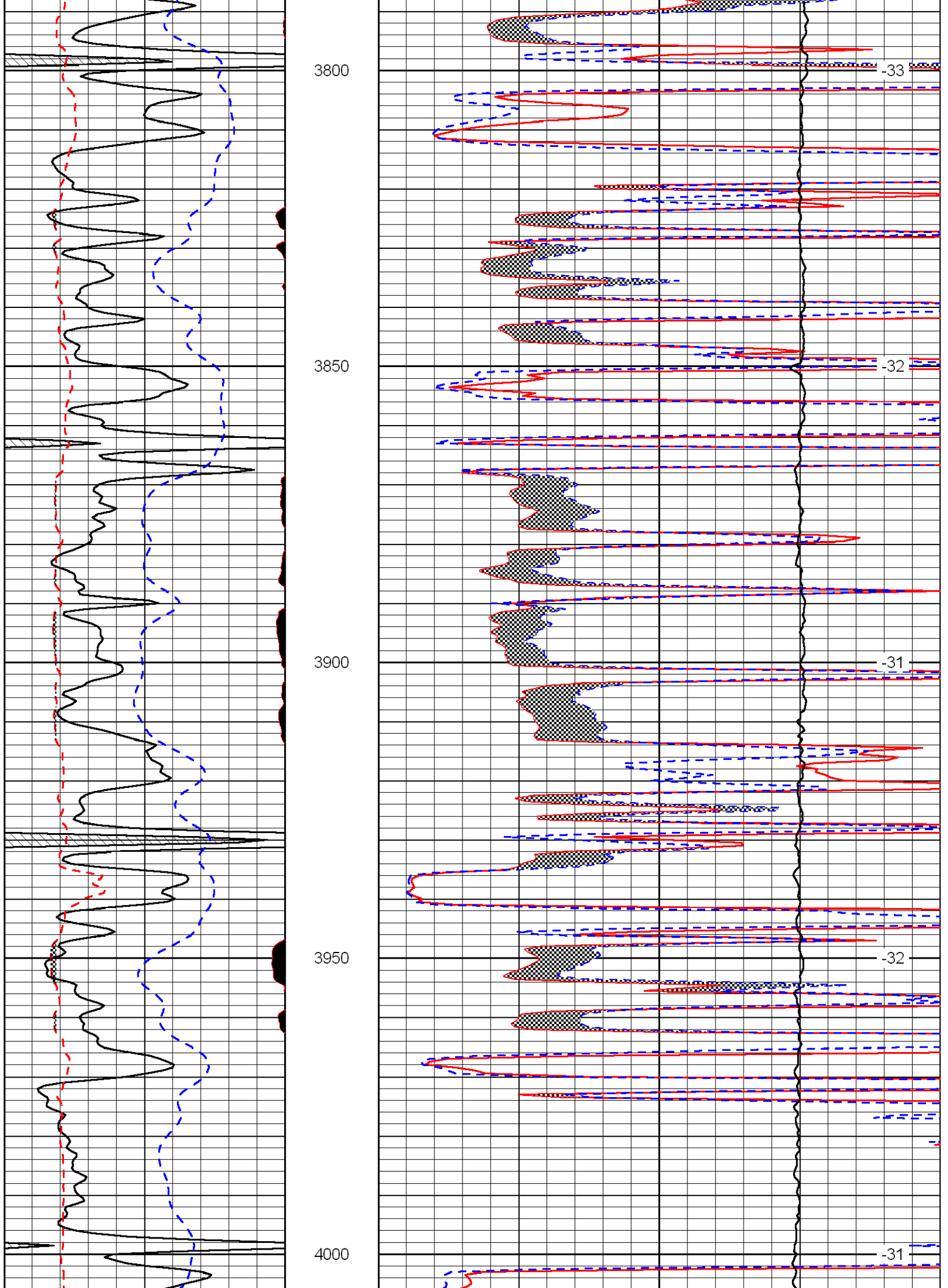
Dighton KS, 5 W, 5 S, E Into

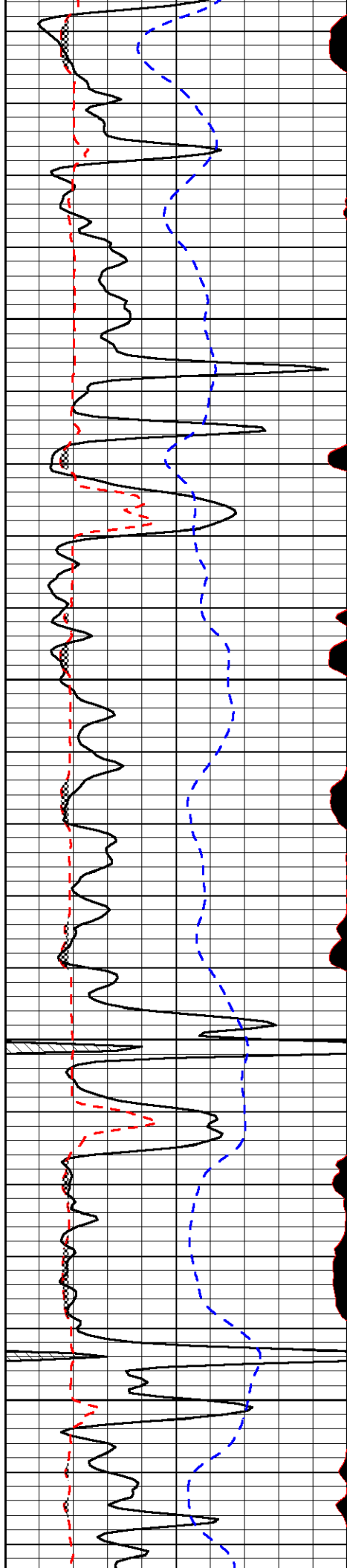
Database File: larsonhd.db
 Dataset Pathname: dil/larstk
 Presentation Format: micro
 Dataset Creation: Tue Mar 13 18:13:57 2012
 Charted by: Depth in Feet scaled 1:240

0	Gamma Ray	150
6	MCAL (GAPI)	16
2.875	Mud Cake (GAPI)	7.875
-200	SP	0

0	Micro Inverse 1 X 1	40
0	Micro Normal 2"	40
10000	Line Weight	0
		LSPD





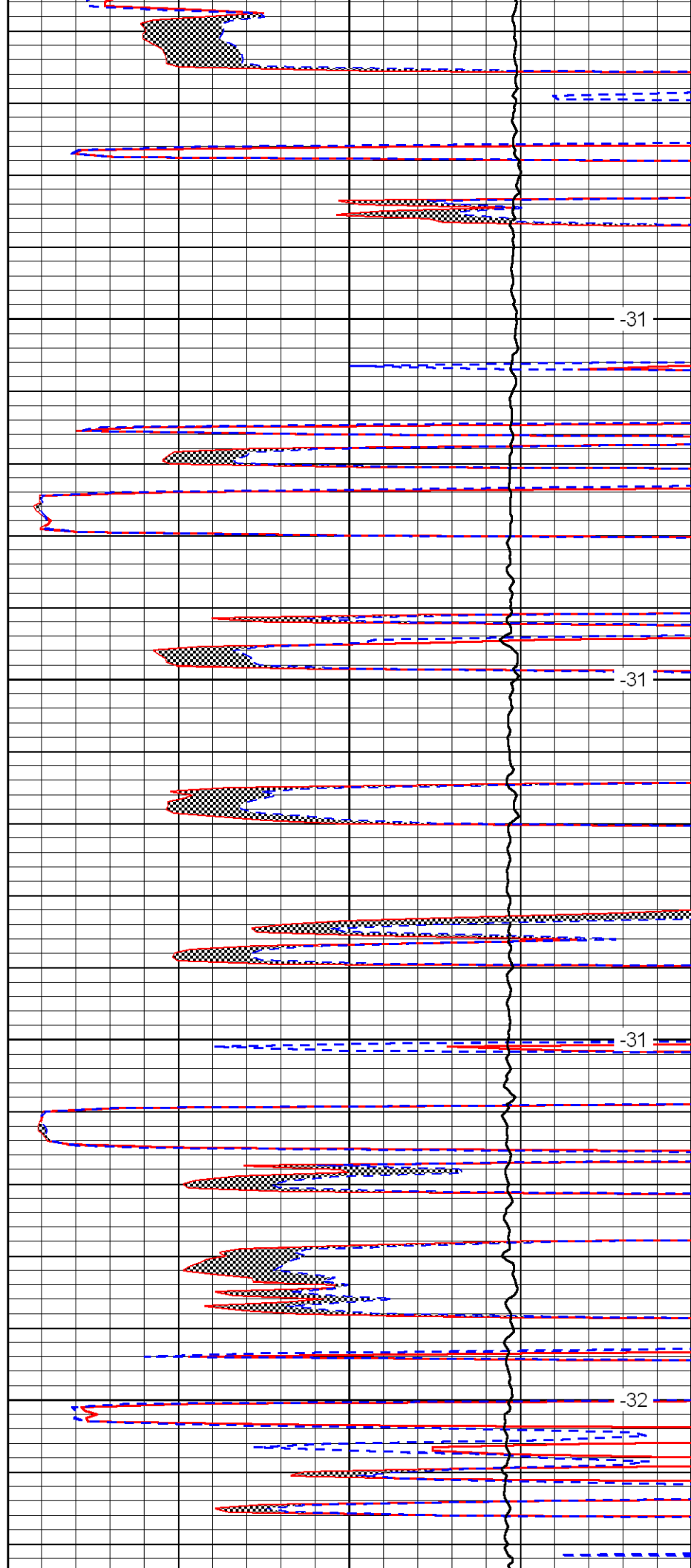


4050

4100

4150

4200

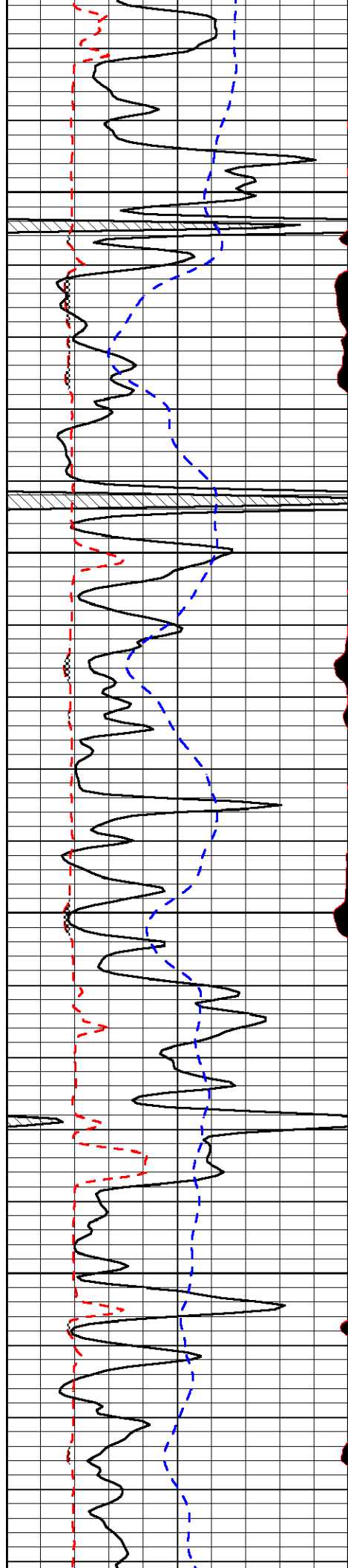


-31

-31

-31

-32

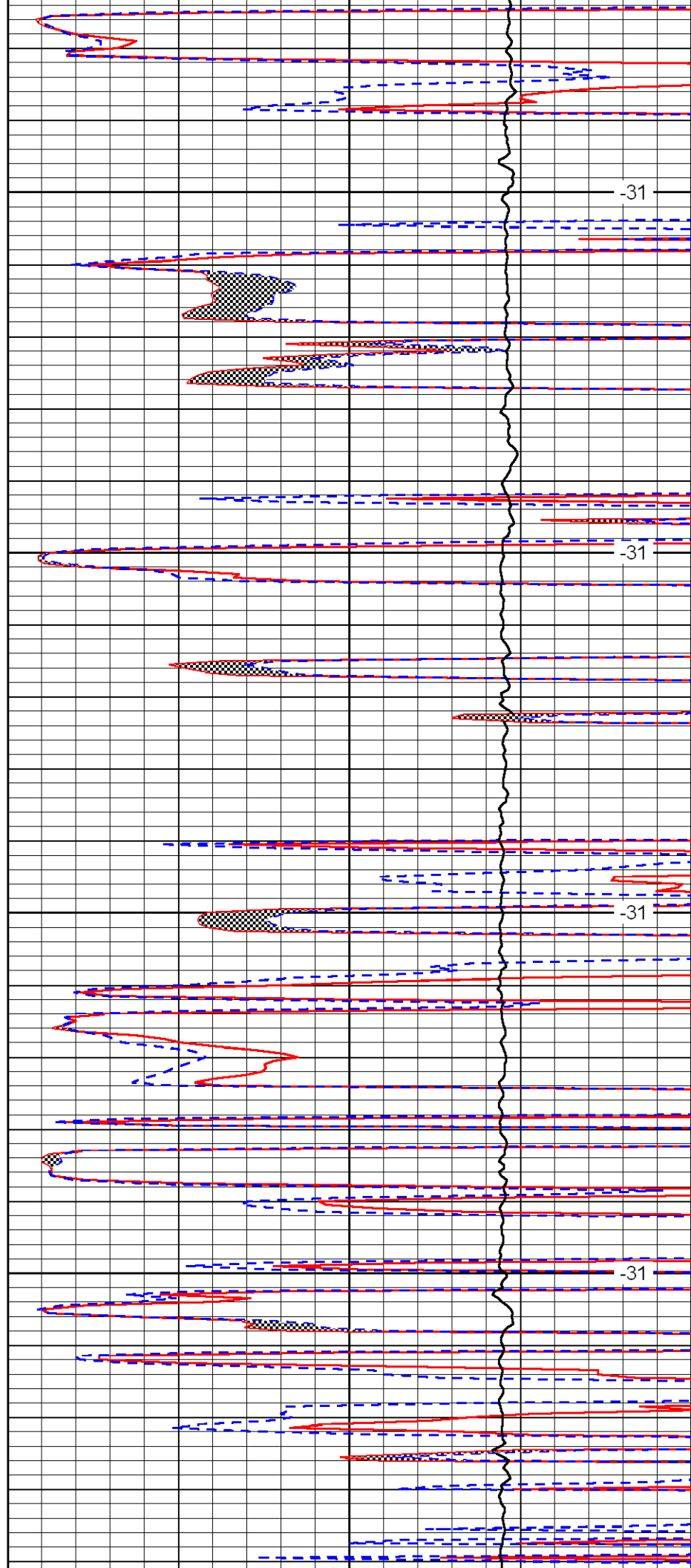


4250

4300

4350

4400

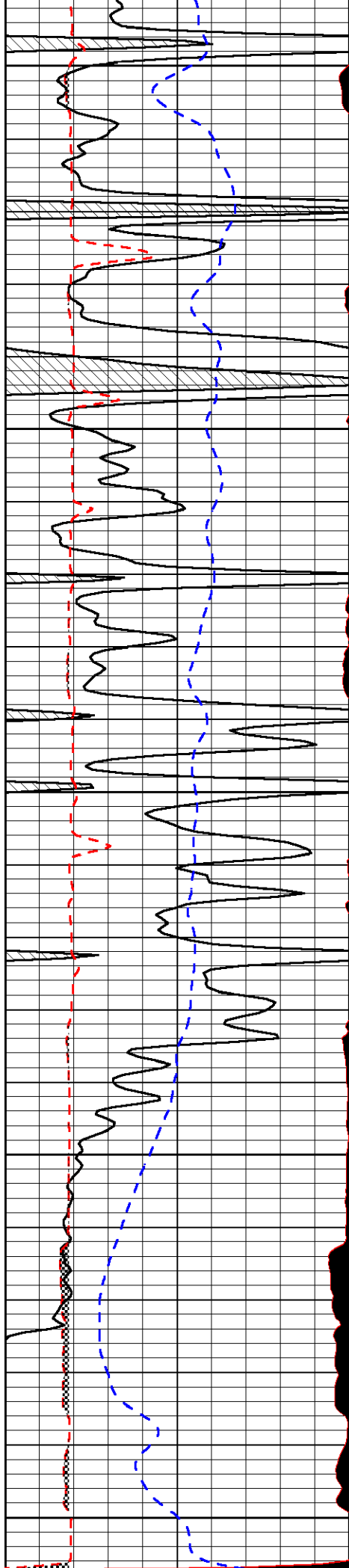


-31

-31

-31

-31



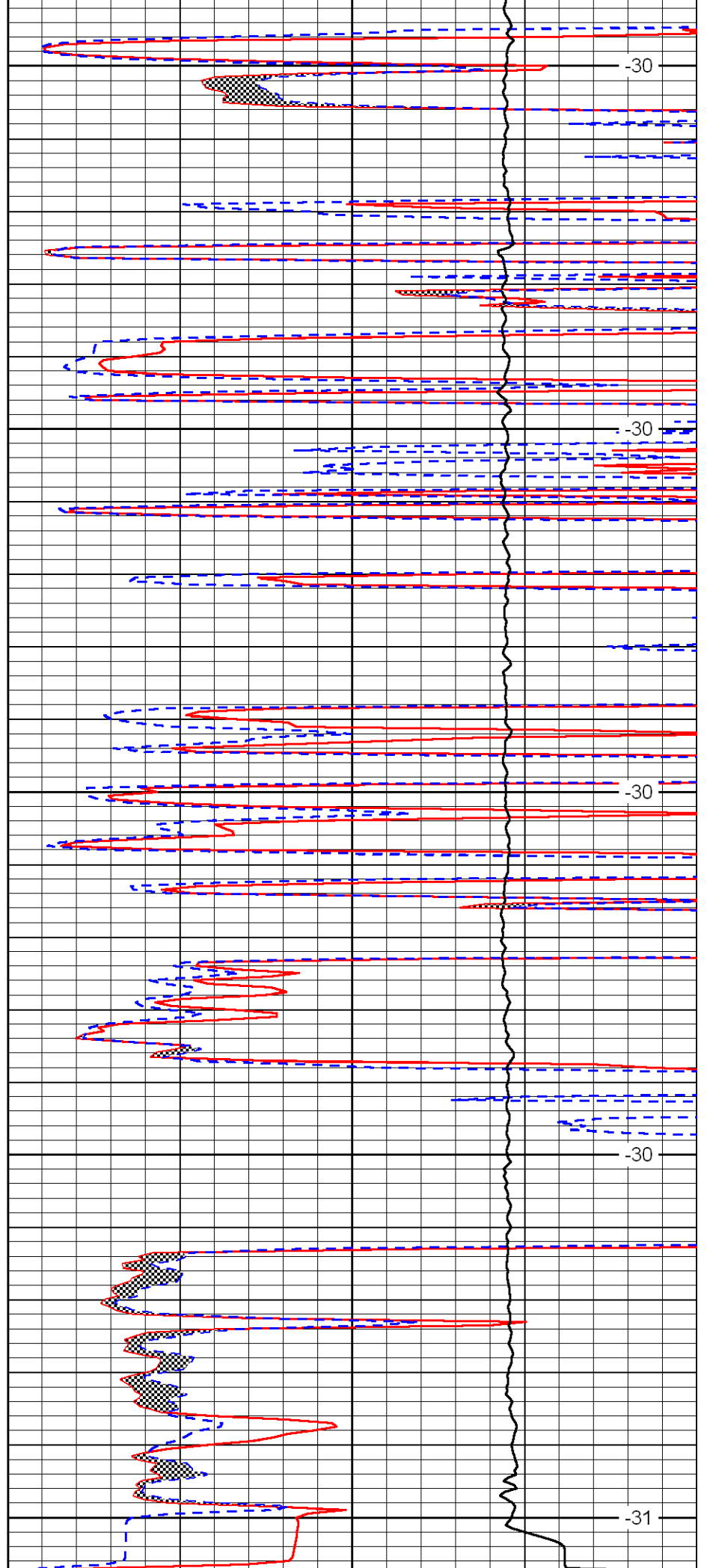
4450

4500

4550

4600

4650



-30

-30

-30

-30

-31

0	Gamma Ray	150
6	MCAL (GAPI)	16
2.875	Mud Cake (GAPI)	7.875
-200	SP	0

0	Micro Inverse 1 X 1	40
0	Micro Normal 2"	40
10000	Line Weight	0

LSPD