



# Dual Induction Log

DIGITAL LOG

(785) 625-3858

API No.	15-101-22,354-00-00		
Company	Larson Engineering, Inc.		
Well	Melita No.1-8		
Field	Wildcat		
County	Lane	State	Kansas
Location	629' FSL & 1405' FEL		
Sec:	8	Twp:	19S Rge: 29W
Permanent Datum	Ground Level	Elevation	2837
Log Measured From	Kelly Bushing	7	Ft. Above Perm. Datum
Drilling Measured From	Kelly Bushing		
		Other Services	CNL/CDL MEL
		Elevation	K.B. 2844 D.F. 2837 G.L. 2837

Date	3/13/2012	
Run Number	One	
Depth Driller	4650	
Depth Logger	4652	
Bottom Logged Interval	4651	
Top Log Interval	250	
Casing Driller	8.625 @ 262	
Casing Logger	263	
Bit Size	7.875	
Type Fluid in Hole	Chemical	
Salinity, ppm CL	1.500	
Density / Viscosity	9.3	46
pH / Fluid Loss	10.0	8.4
Source of Sample	Flowline	
Rm @ Meas. Temp	1.7 @ 88	
Rmf @ Meas. Temp	1.28 @ 88	
Rmc @ Meas. Temp	2.3 @ 88	
Source of Rmf / Rmc	Charts	
Rm @ BHT	1.22 @ 123	
Operating Rig Time	4 Hours	
Max Rec. Temp. F	123	
Equipment Number	17	
Location	Hays	
Recorded By	C. Desaire	
Witnessed By	Bob Lewell/n	

<<< Fold Here >>>

All interpretations are opinions based on inferences from electrical or other measurements and we cannot and do not guarantee the accuracy or correctness of any interpretation, and we shall not, except in the case of gross or willful negligence on our part, be liable or responsible for any loss, costs, damages, or expenses incurred or sustained by anyone resulting from any interpretation made by any of our officers, agents or employees. These interpretations are also subject to our general terms and conditions set out in our current Price Schedule.

Comments

Thank you for using Log-Tech, Inc.  
(785) 625-3858

Dighton KS, 5 W, 5 S, E Into

Database File: larsonhd.db  
 Dataset Pathname: dil/larstk  
 Presentation Format: dil2in  
 Dataset Creation: Tue Mar 13 18:13:57 2012  
 Charted by: Depth in Feet scaled 1:600

0 Gamma Ray 150  
-200 SP 0

0 Shallow Resistivity 50  
0 Deep Resistivity 50

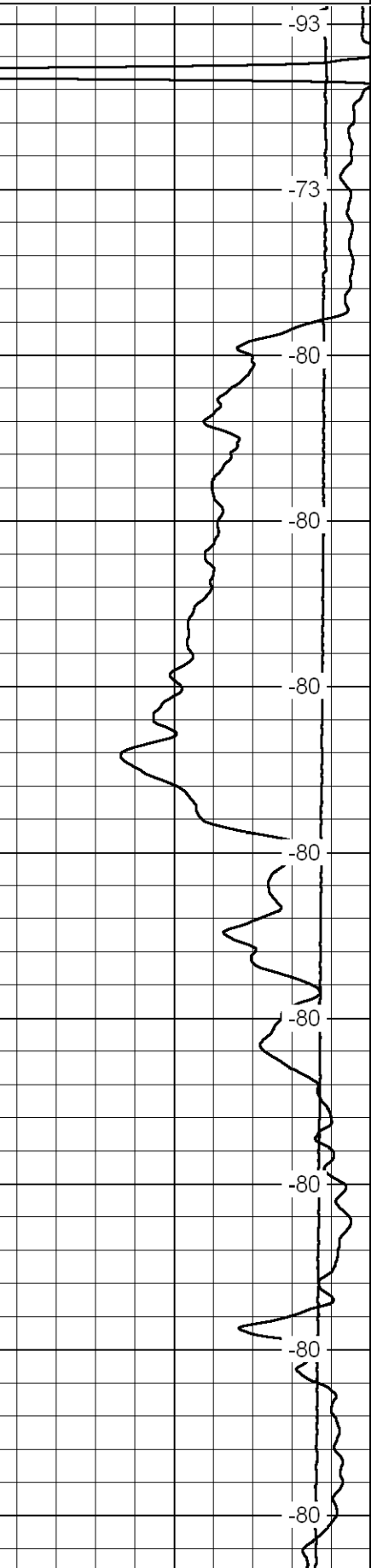
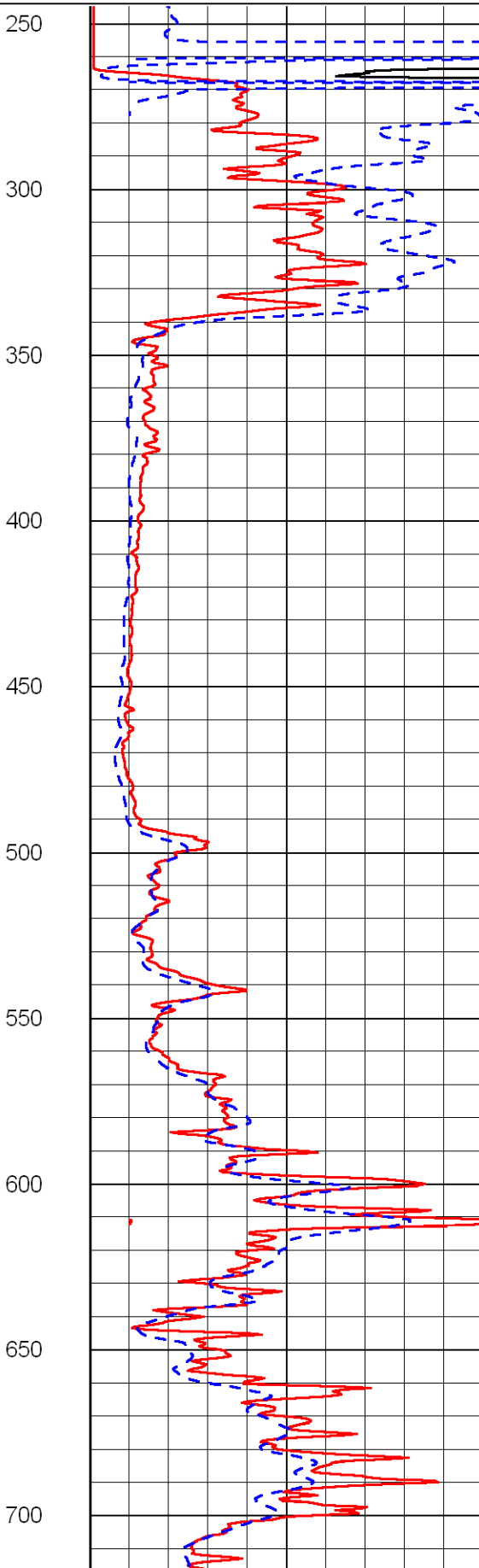
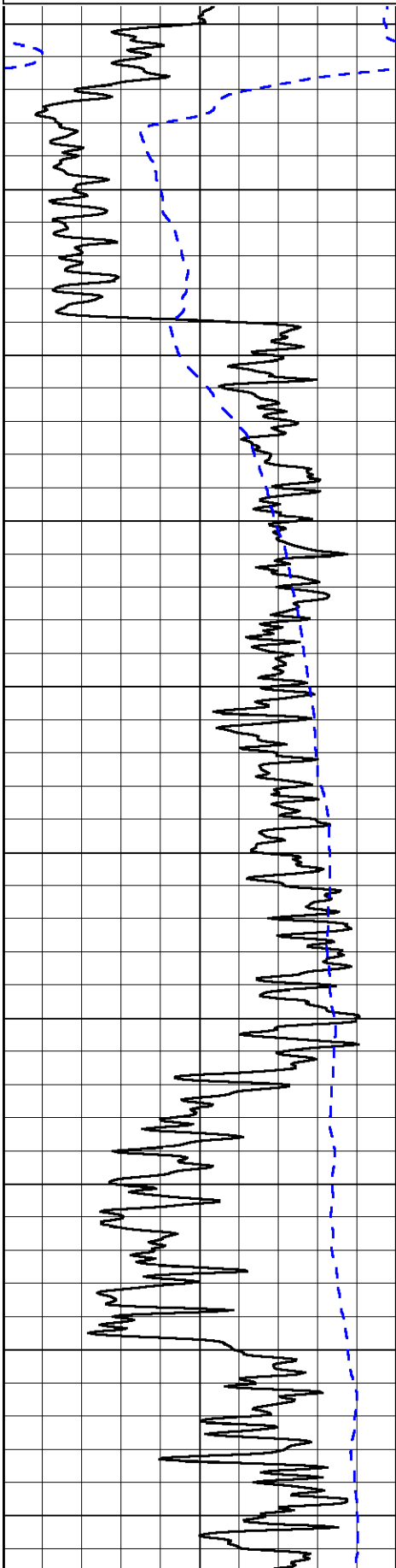
LSPD

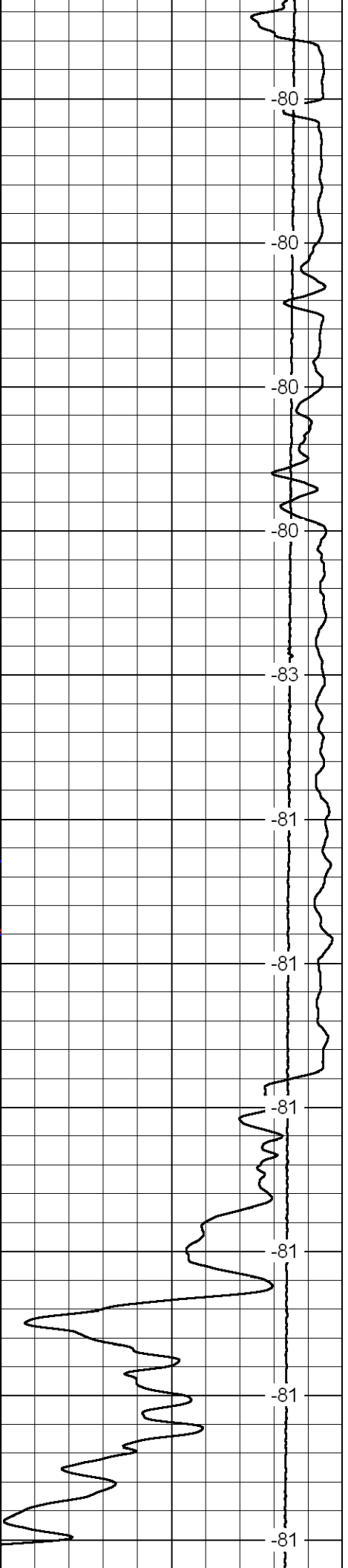
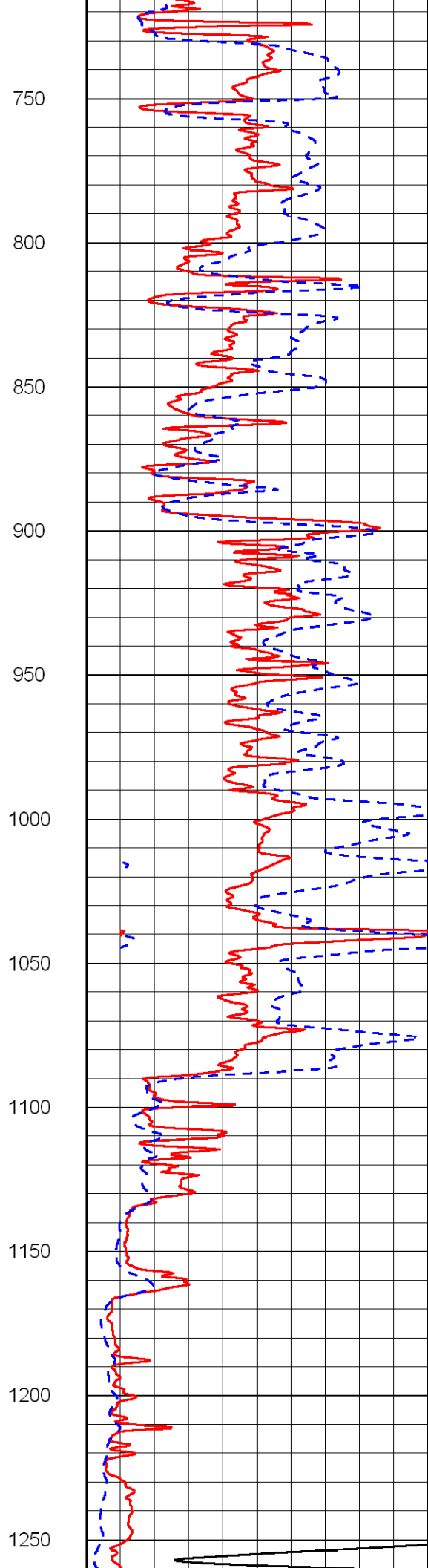
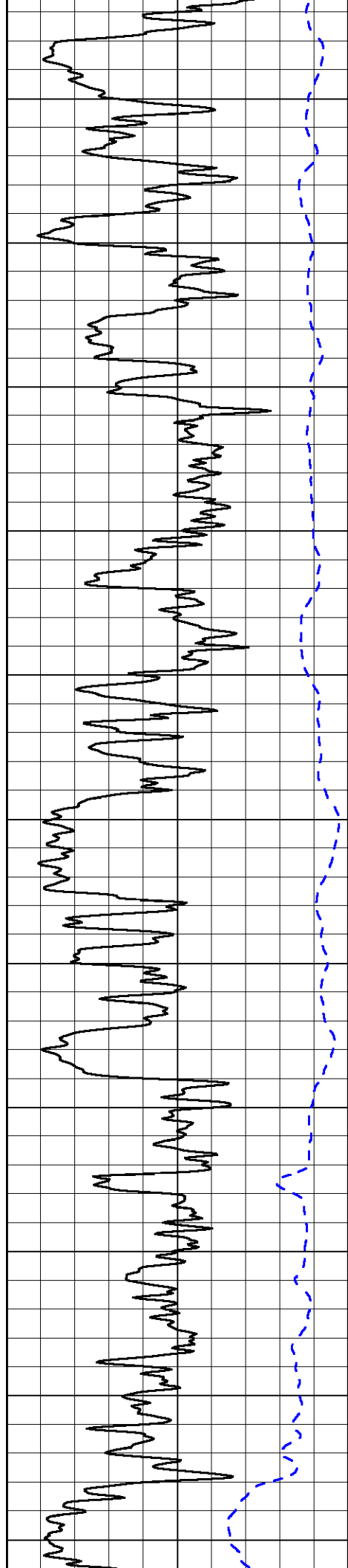
1000 Conductivity 0

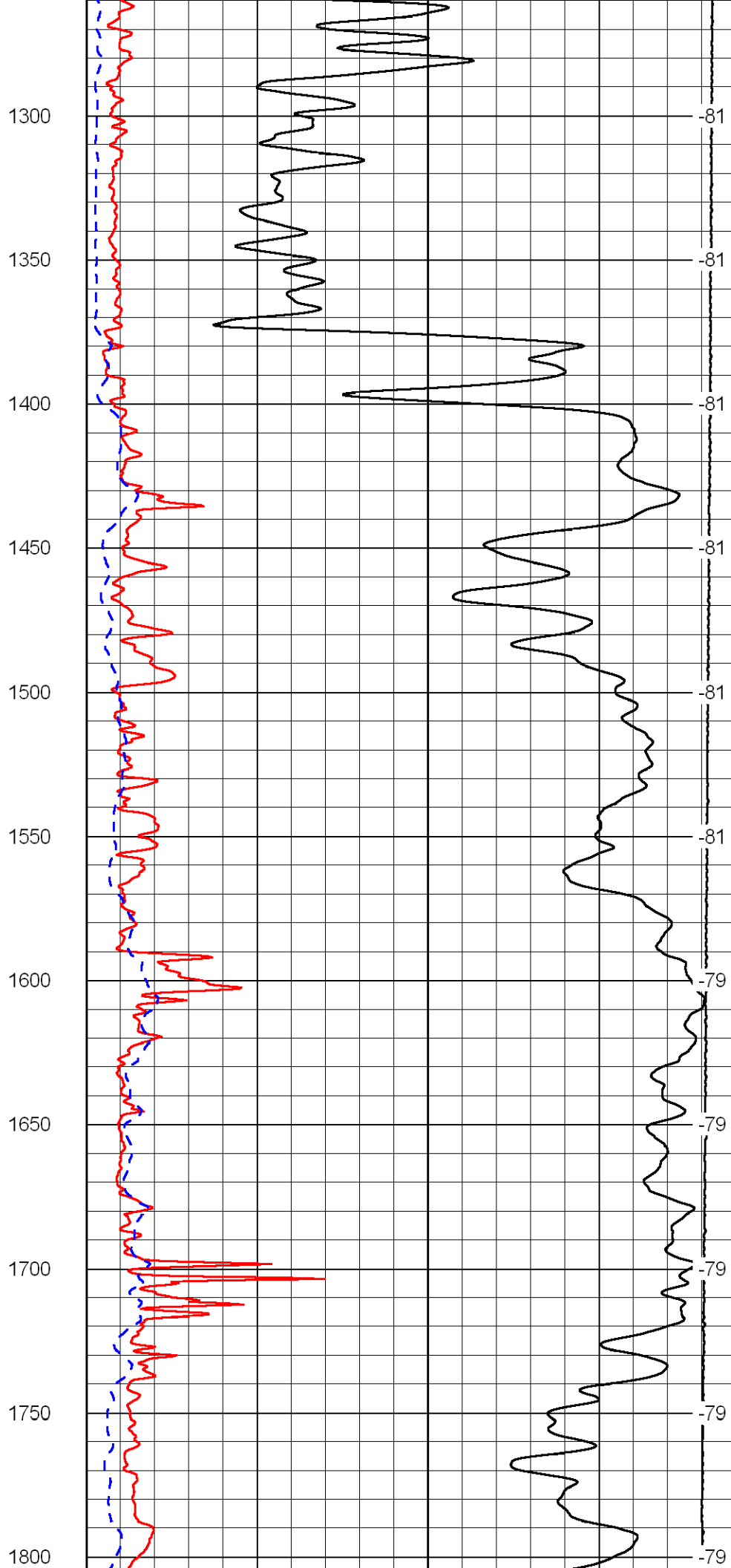
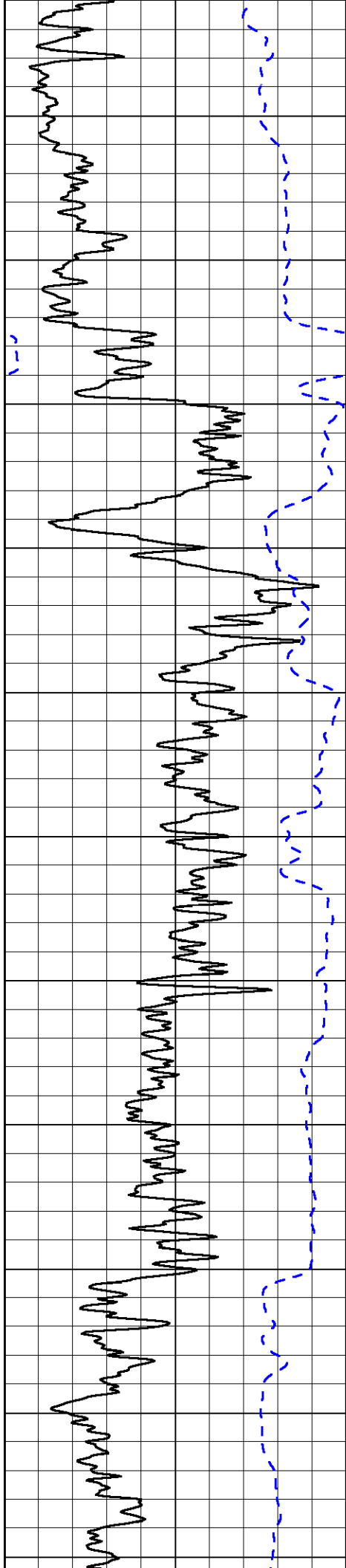
15000 Line Tension 0

50 Shallow Resistivity 500

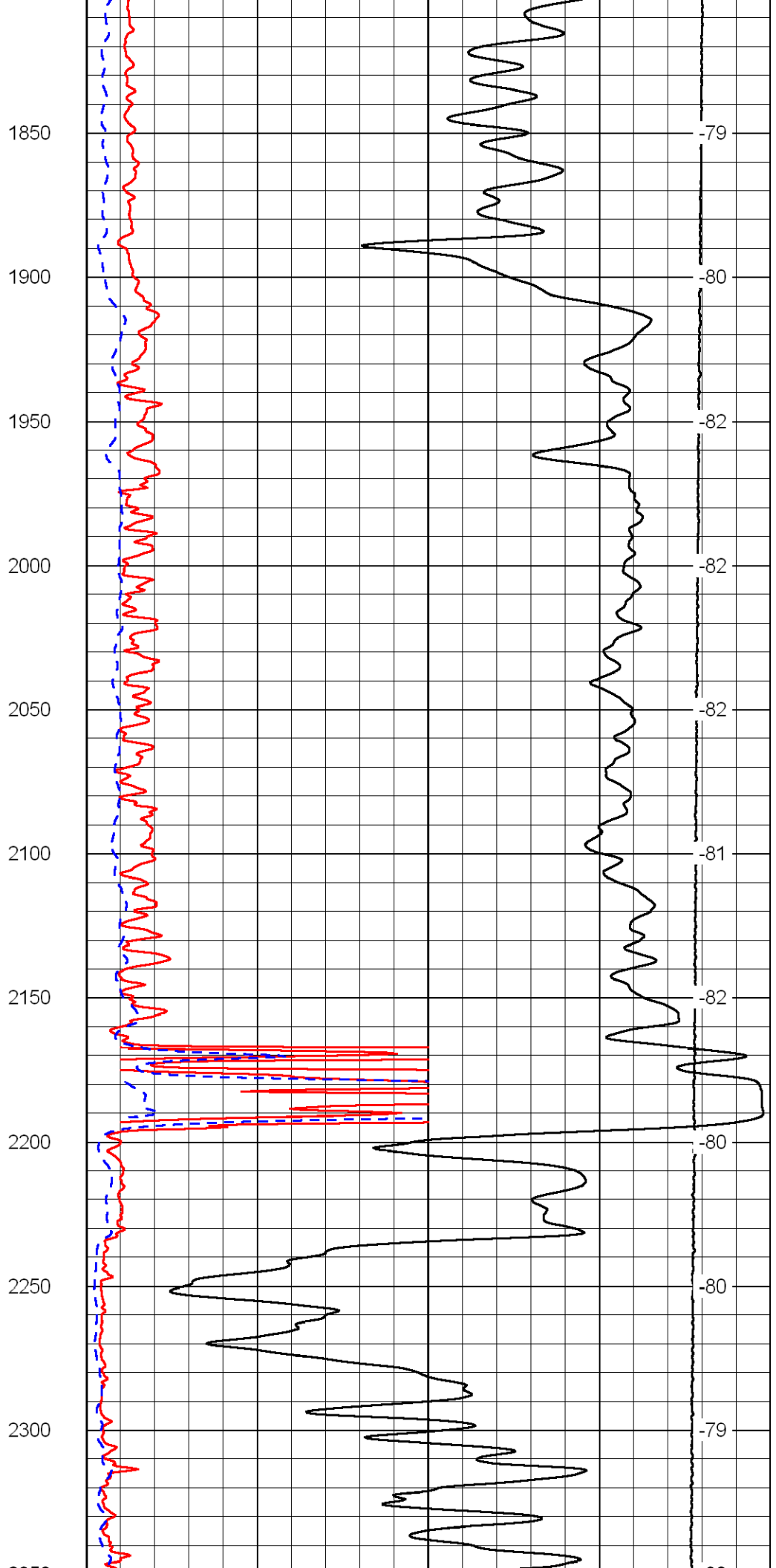
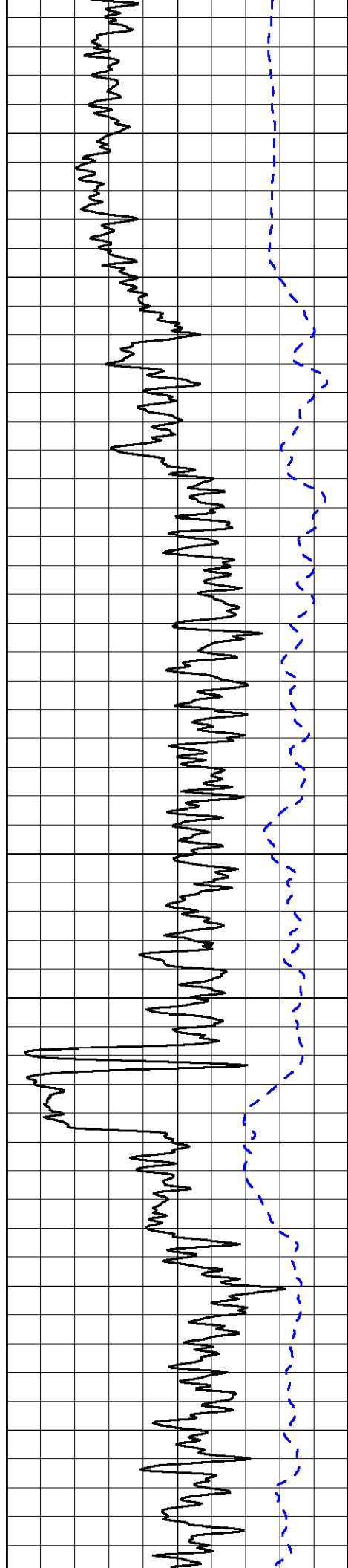
50 Deep Resistivity 500

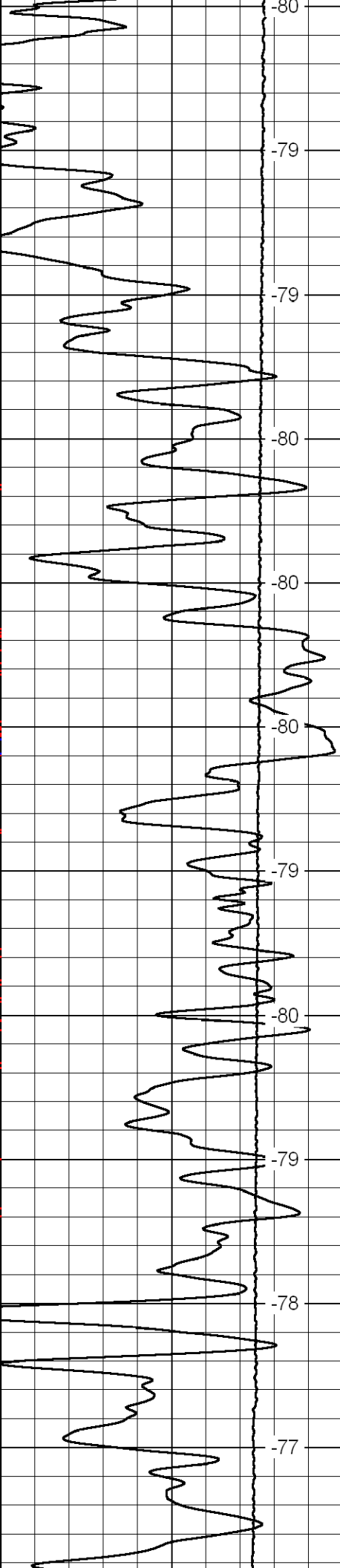
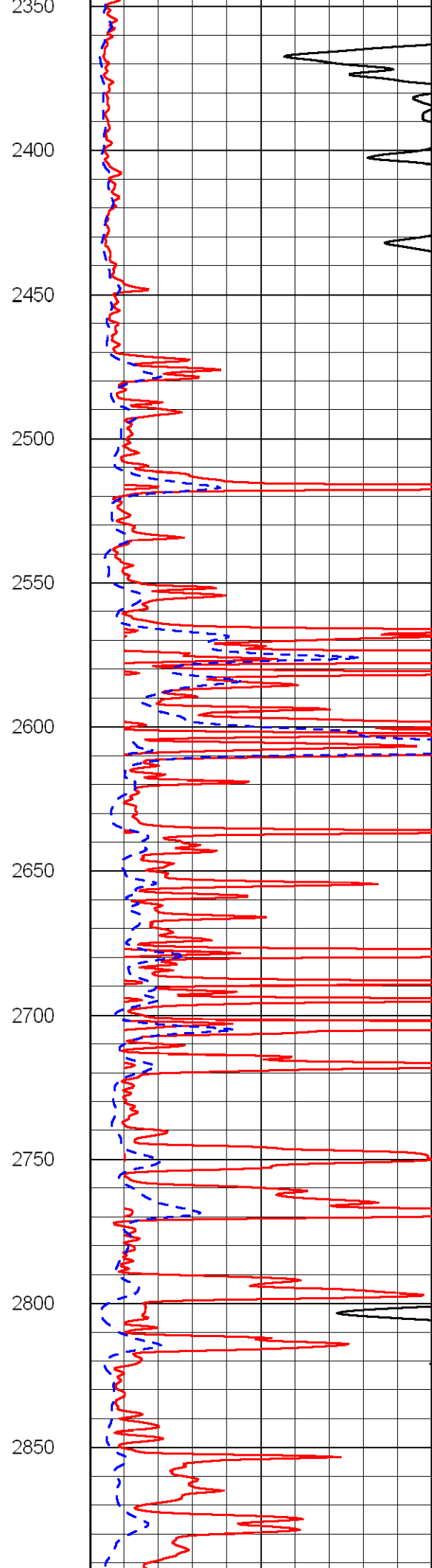
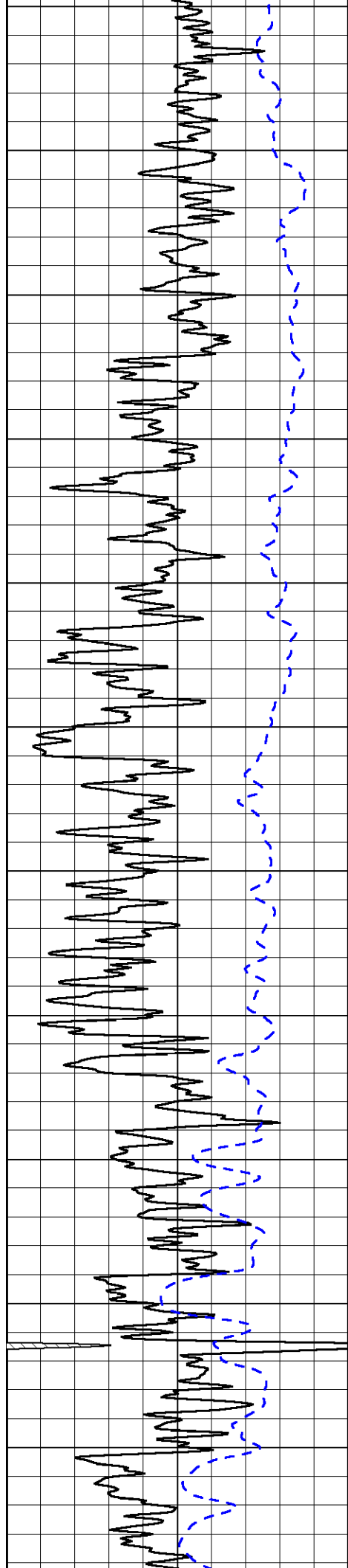


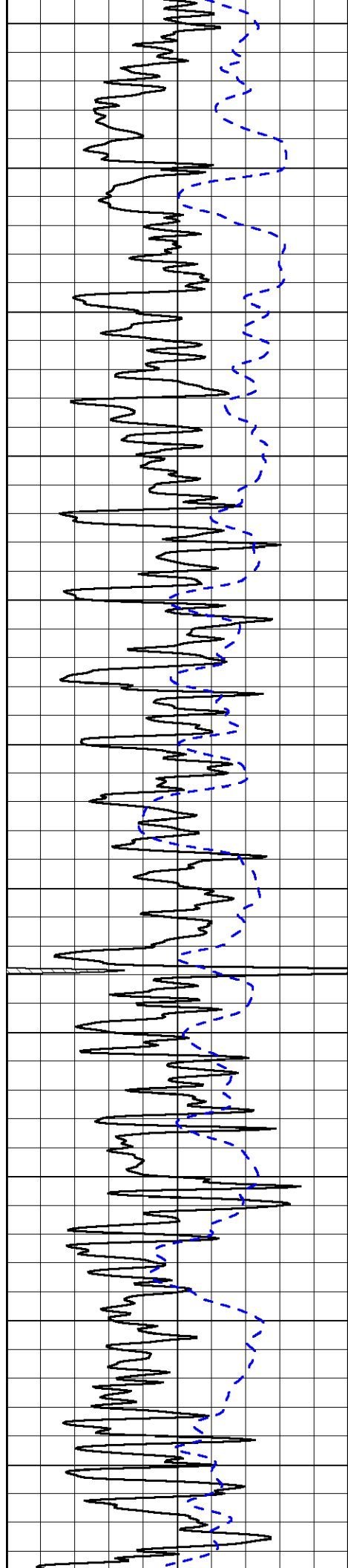




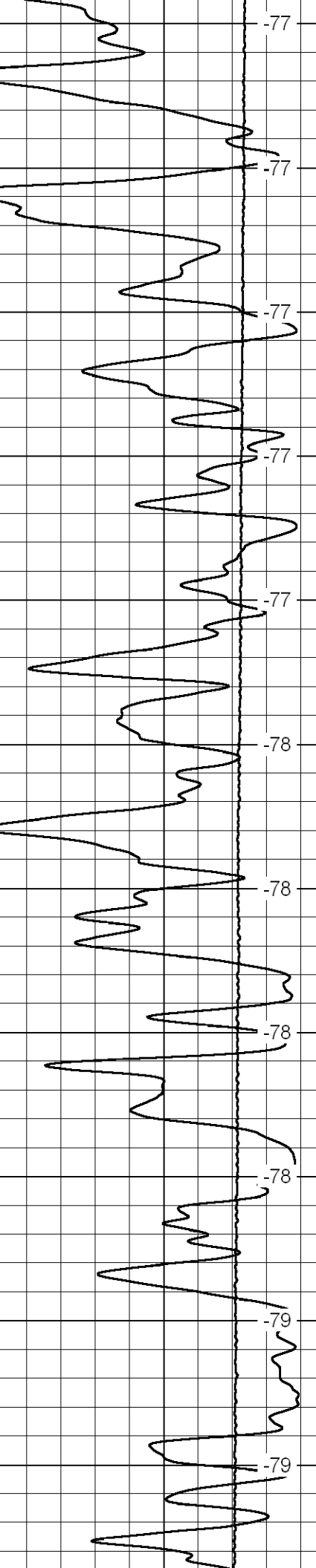
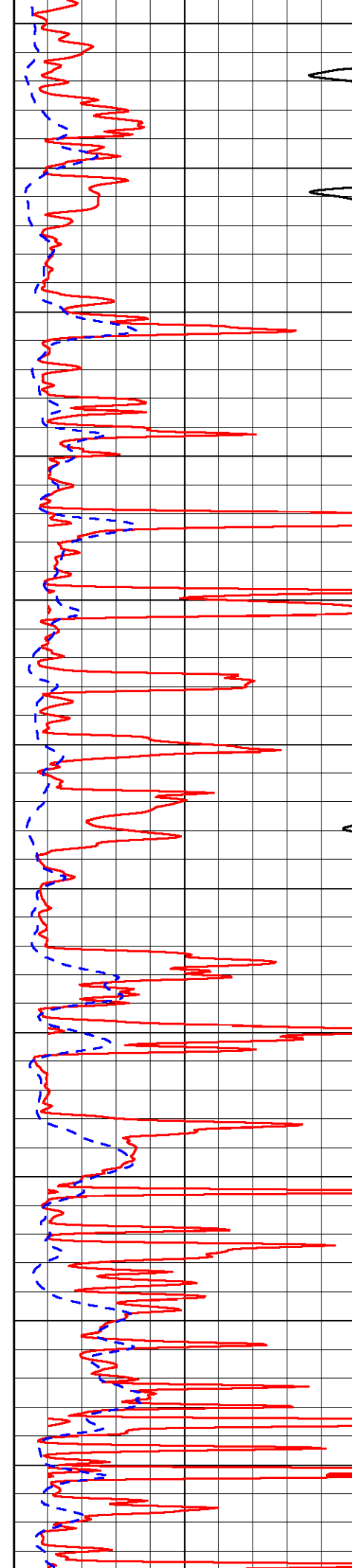
-81  
-81  
-81  
-81  
-81  
-81  
-79  
-79  
-79  
-79  
-79



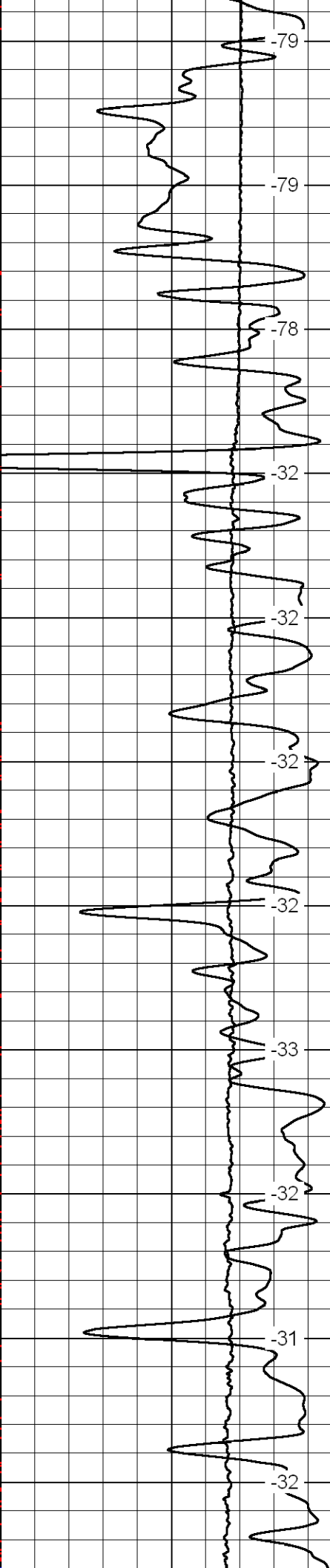
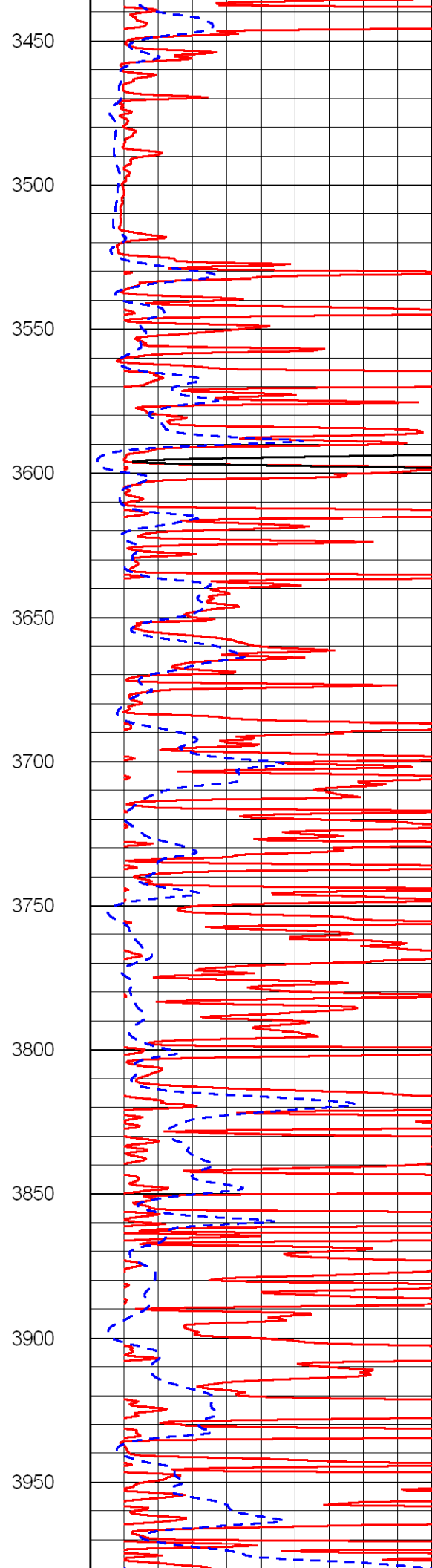
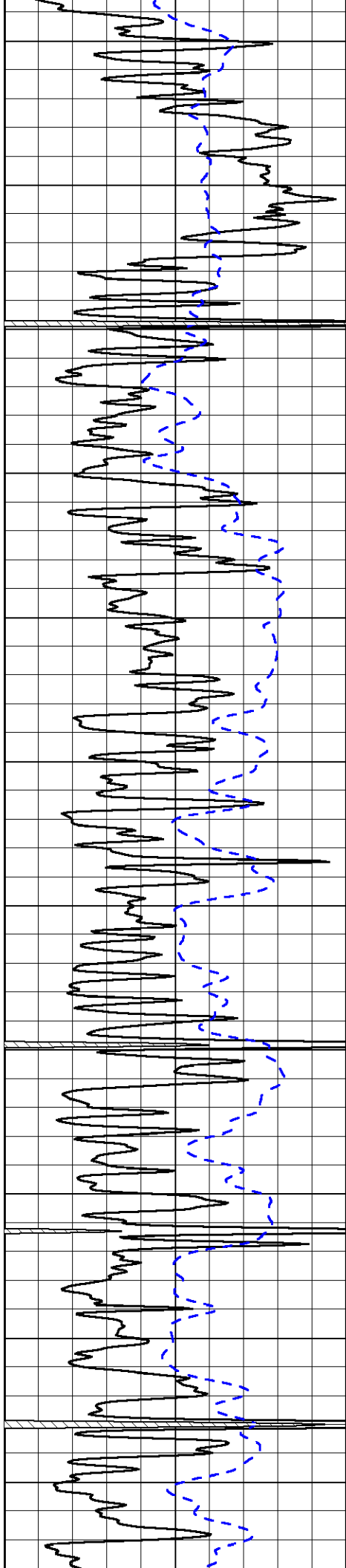


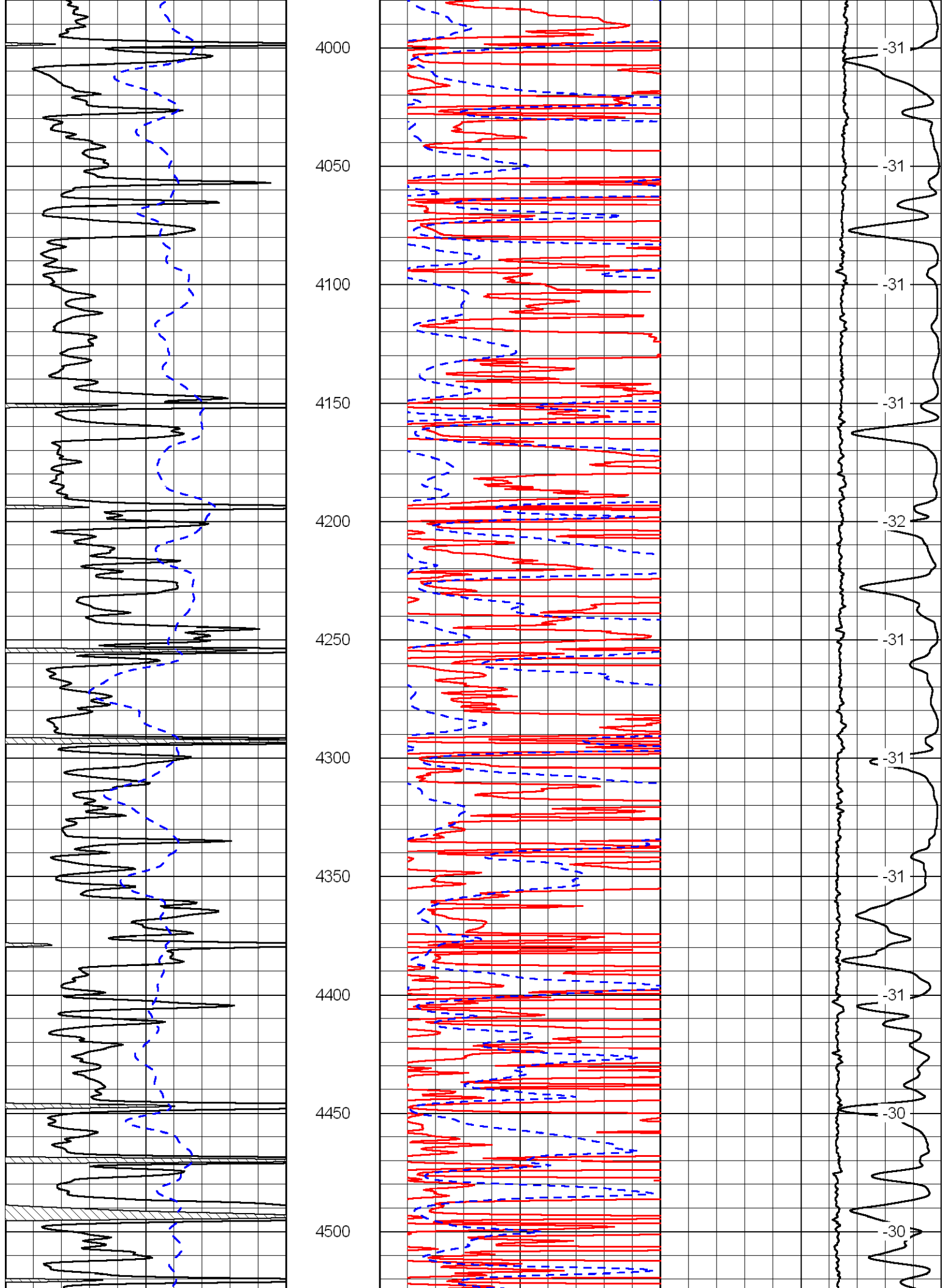


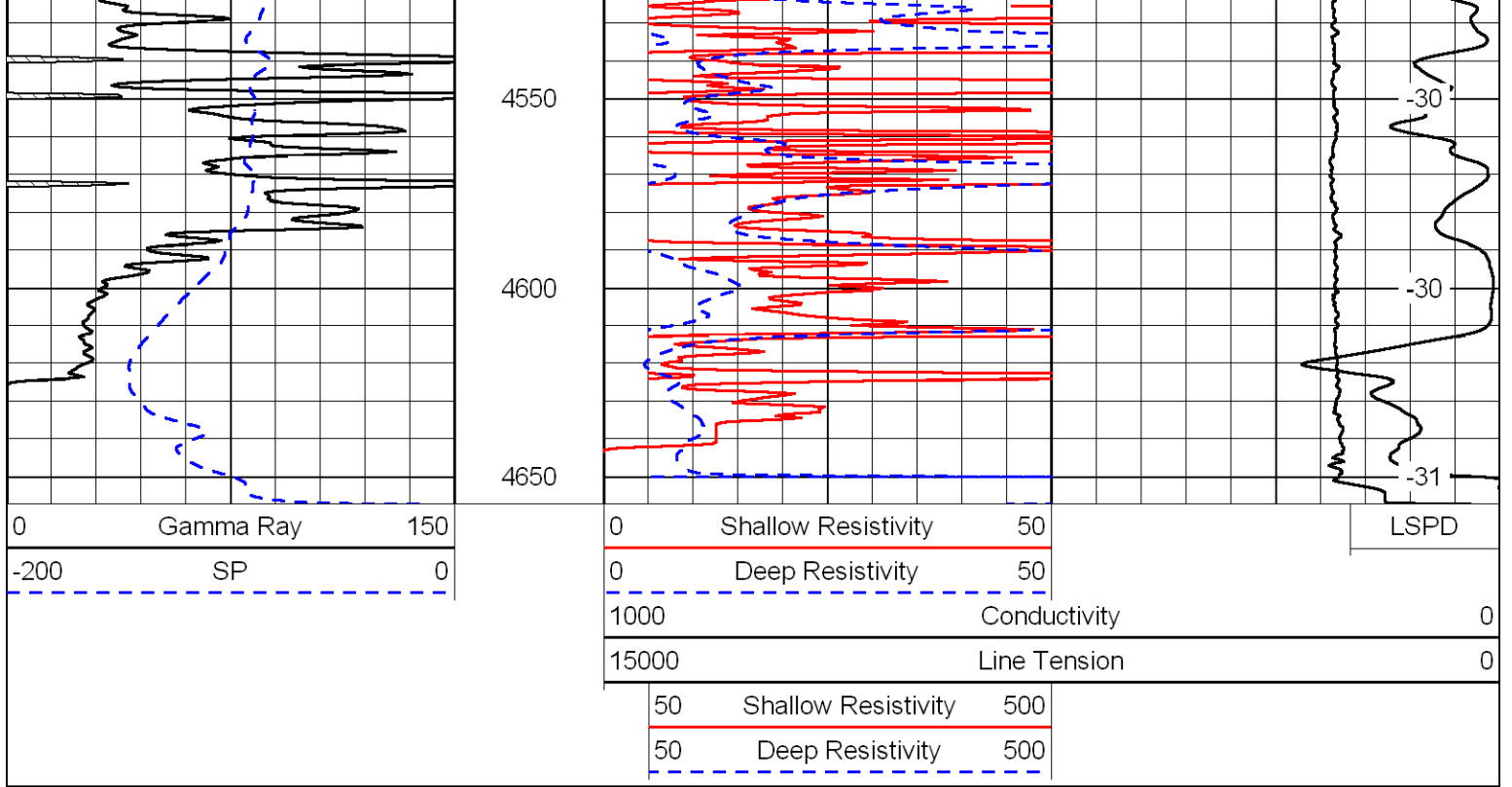
2900  
2950  
3000  
3050  
3100  
3150  
3200  
3250  
3300  
3350  
3400



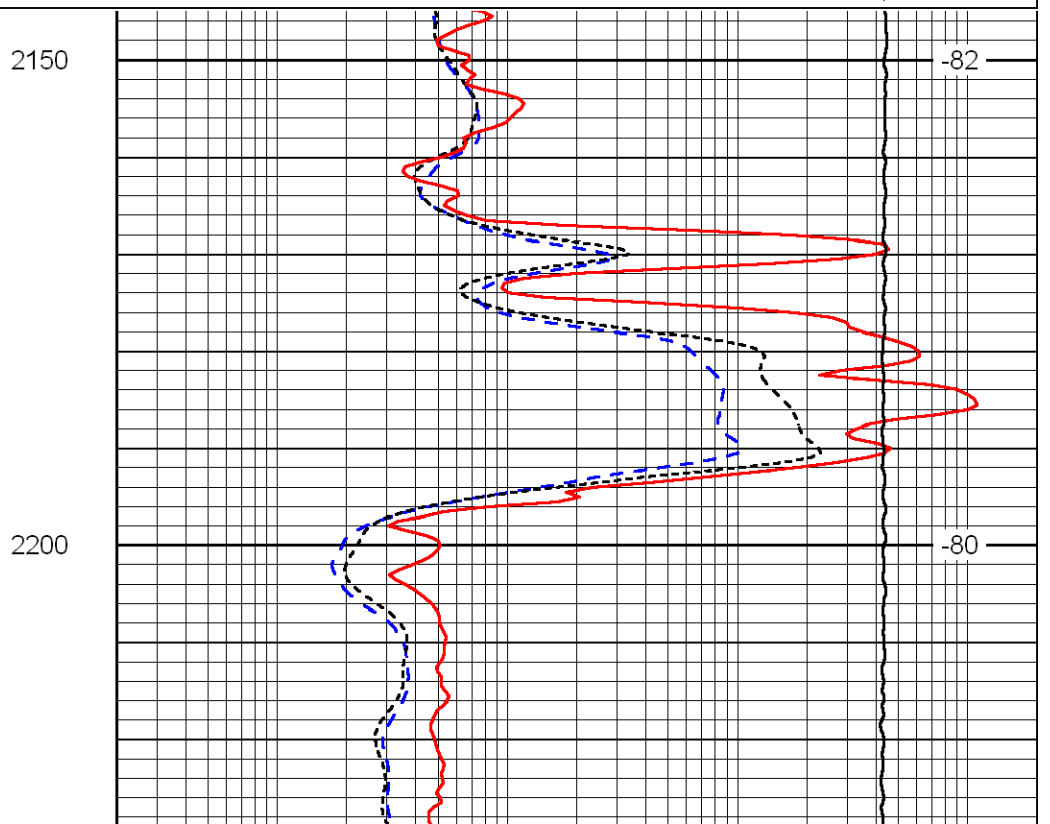
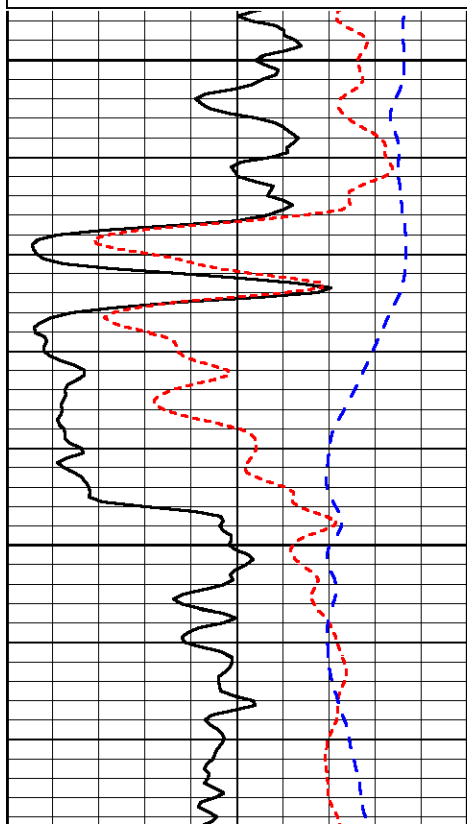
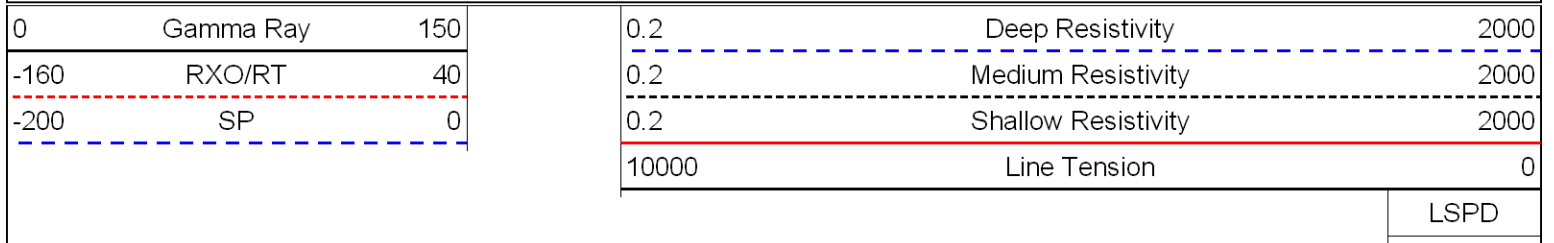
-77  
-77  
-77  
-77  
-77  
-78  
-78  
-78  
-78  
-78  
-79  
-79

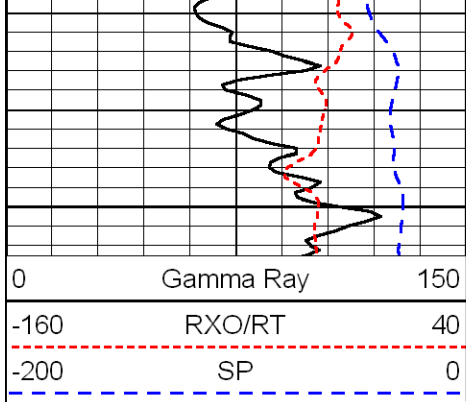




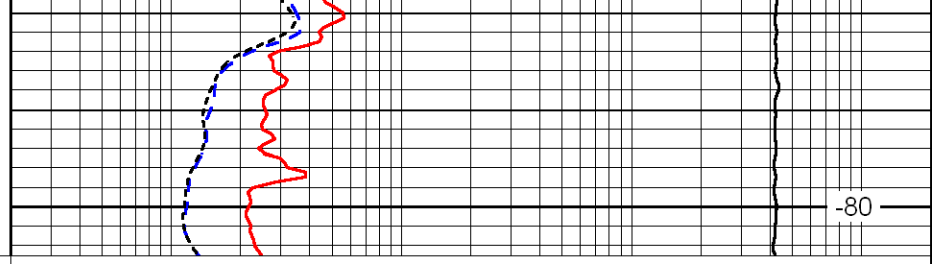


Database File: larsonhd.db  
 Dataset Pathname: dil/larstk  
 Presentation Format: dil  
 Dataset Creation: Tue Mar 13 18:13:57 2012  
 Charted by: Depth in Feet scaled 1:240





2250



-80

0	Gamma Ray	150
-160	RXO/RT	40
-200	SP	0

0.2	Deep Resistivity	2000
0.2	Medium Resistivity	2000
0.2	Shallow Resistivity	2000
10000	Line Tension	0

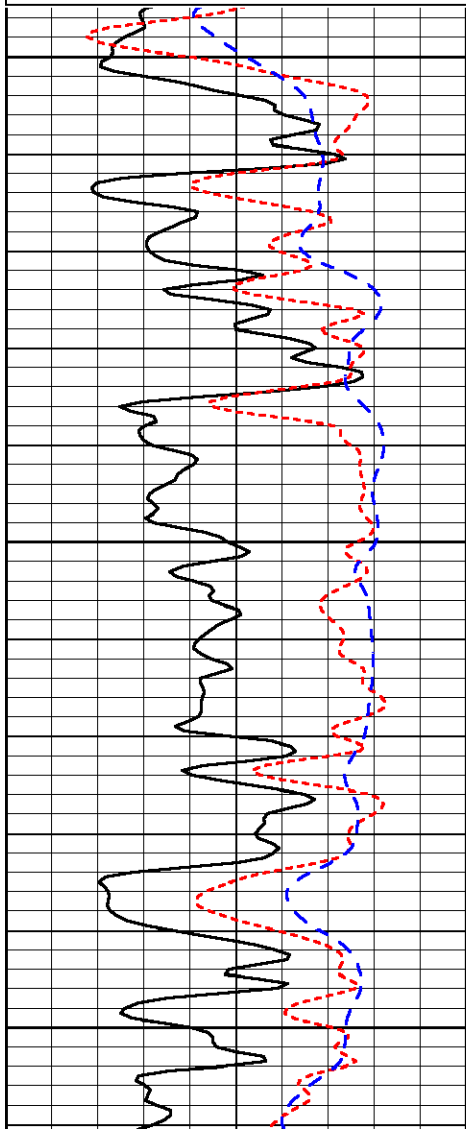
LSPD

Database File: larsonhd.db  
 Dataset Pathname: dil/larstk  
 Presentation Format: dil  
 Dataset Creation: Tue Mar 13 18:13:57 2012  
 Charted by: Depth in Feet scaled 1:240

0	Gamma Ray	150
-160	RXO/RT	40
-200	SP	0

0.2	Deep Resistivity	2000
0.2	Medium Resistivity	2000
0.2	Shallow Resistivity	2000
10000	Line Tension	0

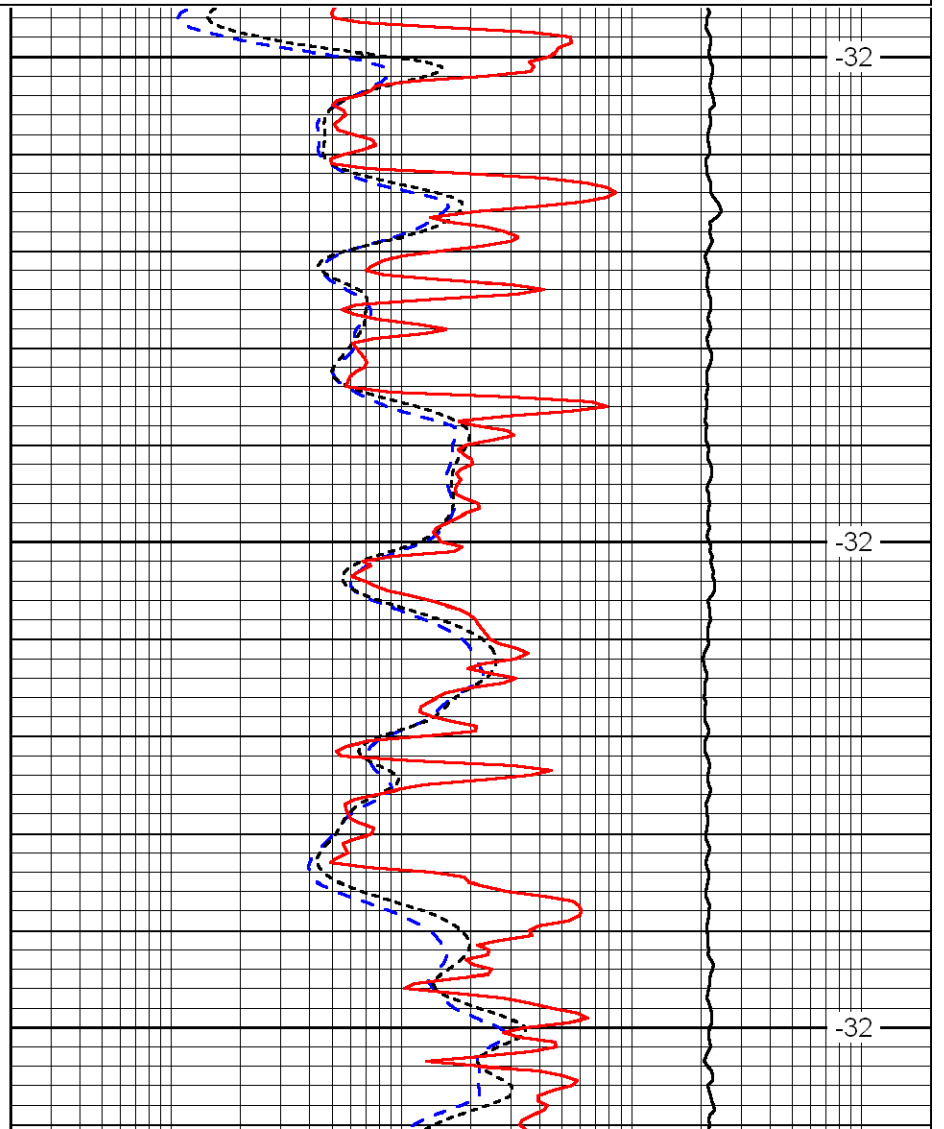
LSPD



3600

3650

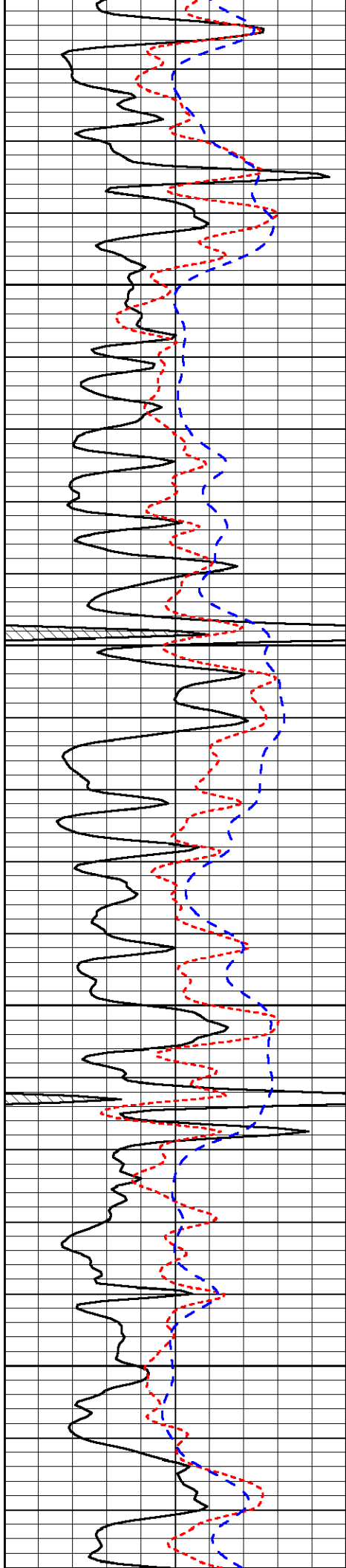
3700



-32

-32

-32

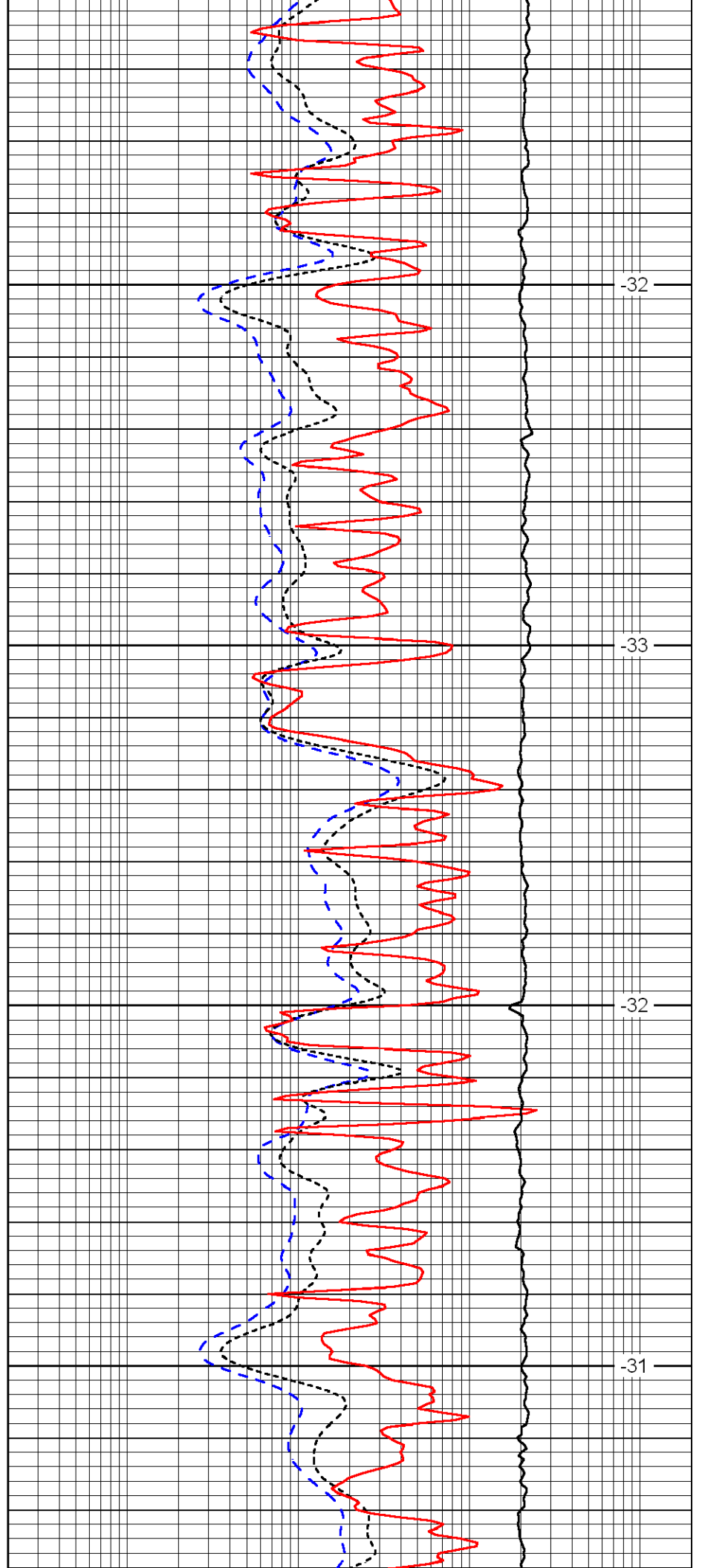


3750

3800

3850

3900

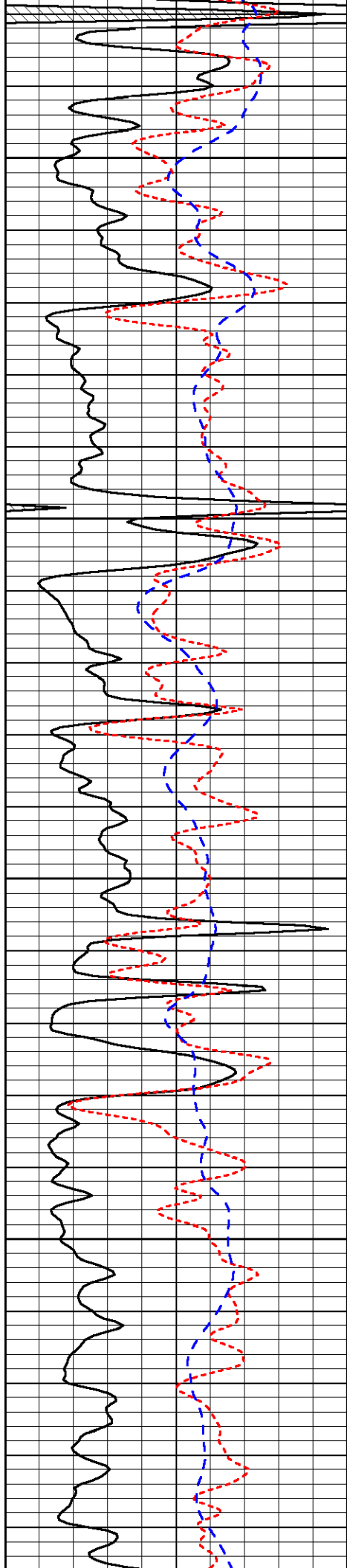


-32

-33

-32

-31

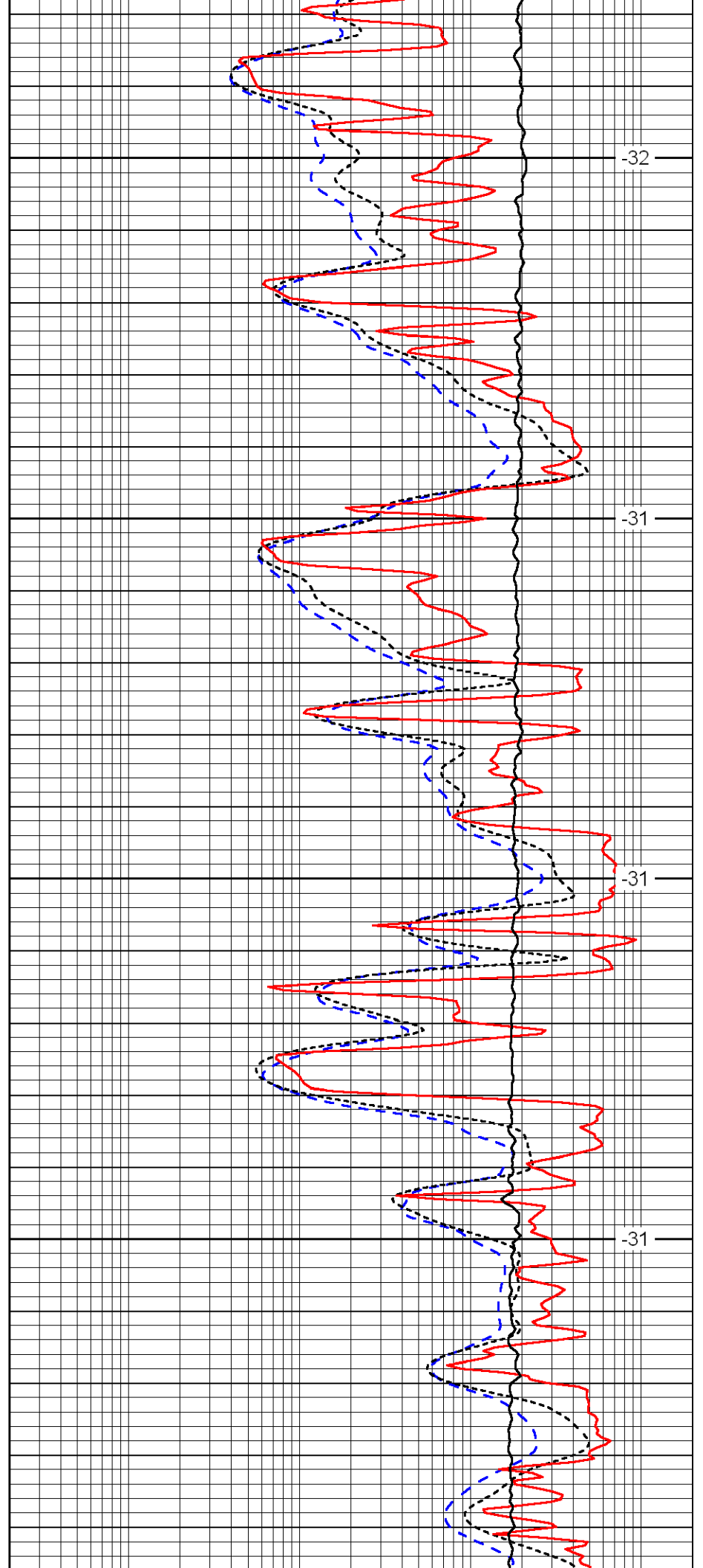


3950

4000

4050

4100

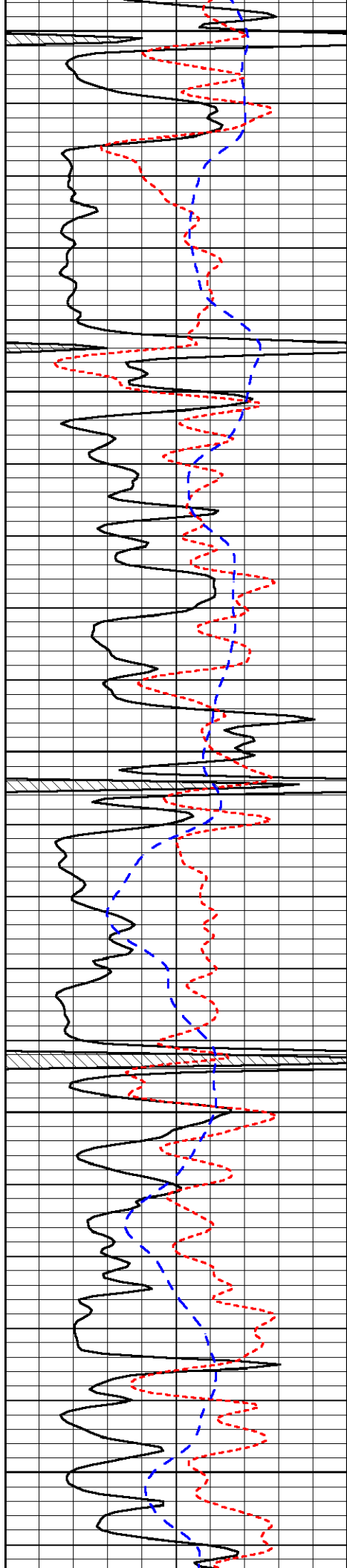


-32

-31

-31

-31



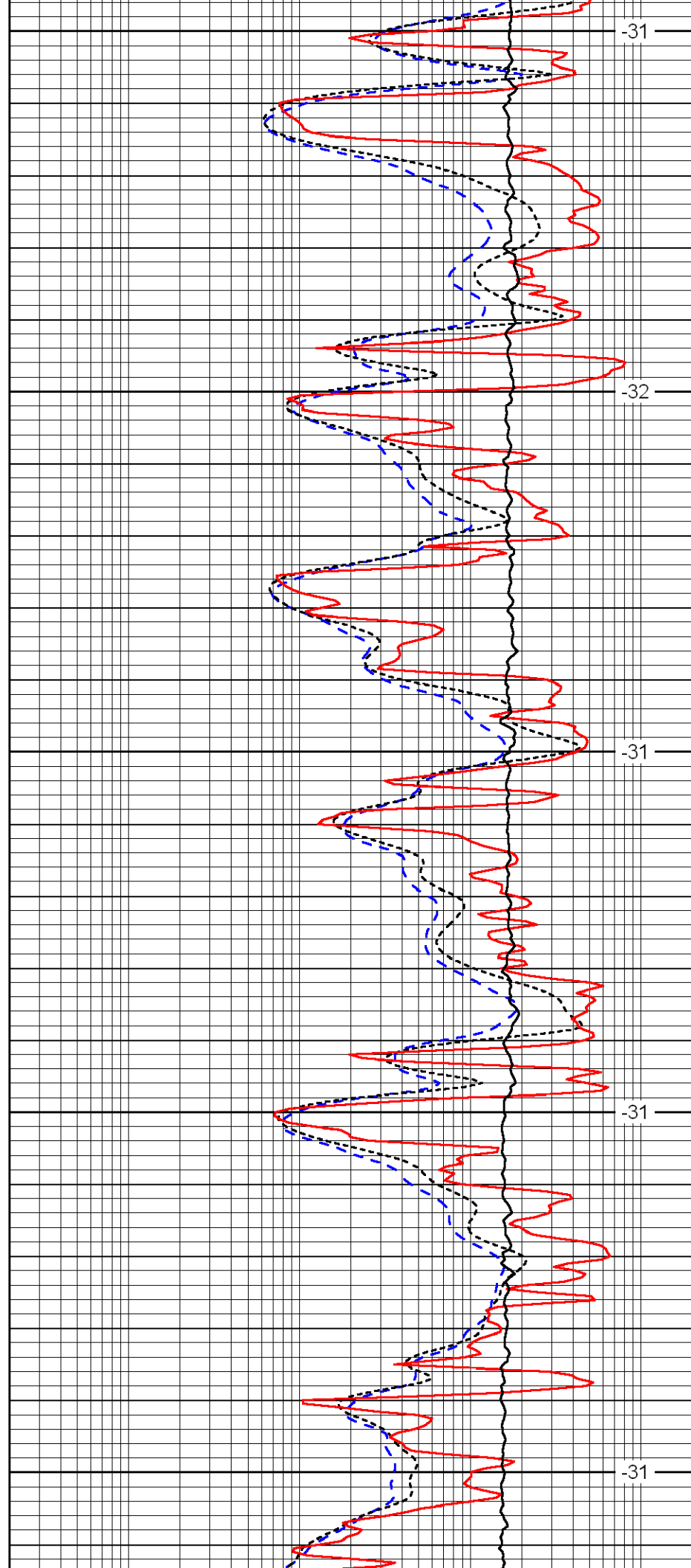
4150

4200

4250

4300

4350



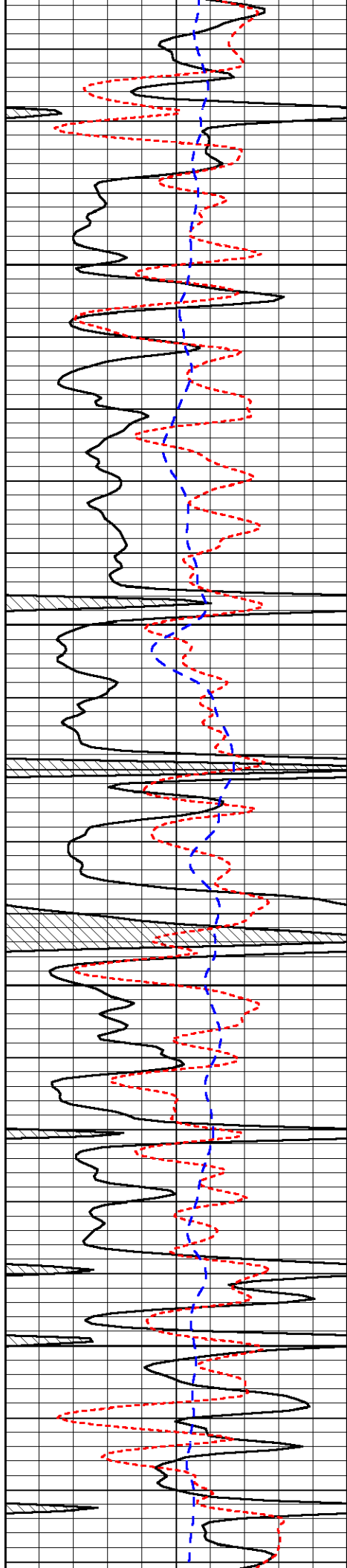
-31

-32

-31

-31

-31

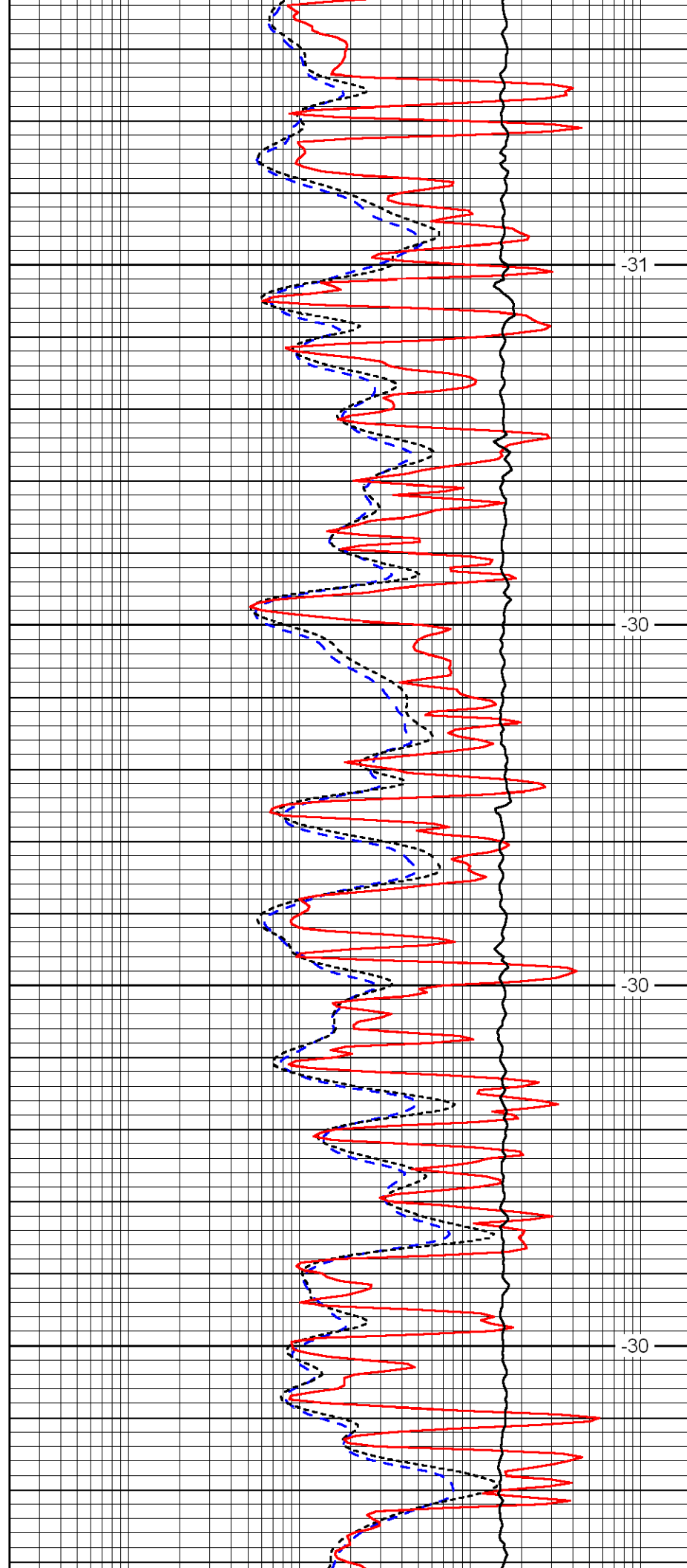


4400

4450

4500

4550

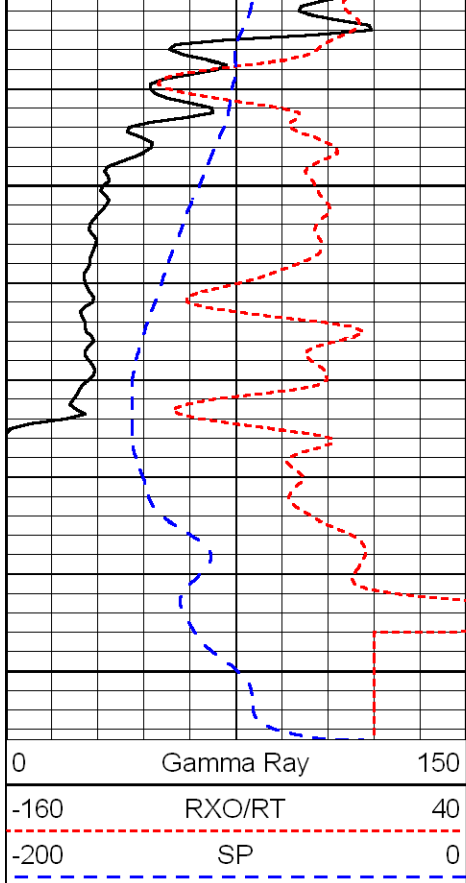


-31

-30

-30

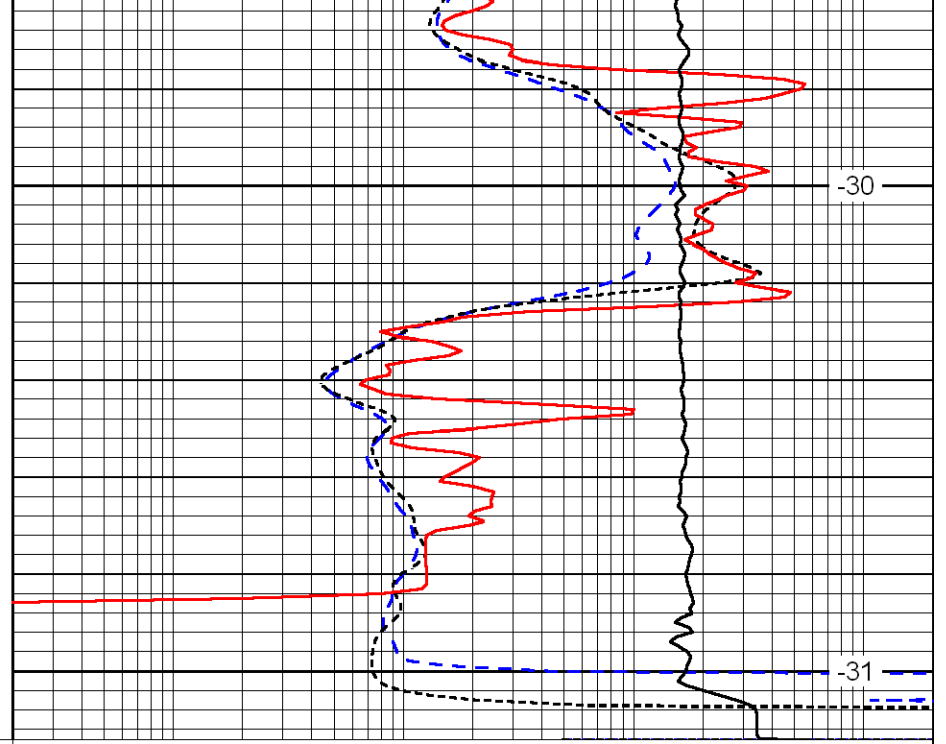
-30



4600

4650

0	Gamma Ray	150
-160	RXO/RT	40
-200	SP	0



-30

-31

0.2	Deep Resistivity	2000
0.2	Medium Resistivity	2000
0.2	Shallow Resistivity	2000
10000	Line Tension	0

LSPD