



DIGITAL LOG (785) 625-3858

Microresistivity Log

15-151-22391-00-00

API No.

Company Timberline Oil & Gas Corporation  
 Well W. Hoener #1  
 Field luka-Carmi  
 County Pratt State Kansas

Location N2 S2 NE  
 3743' FSL / 1383' FEL

Sec: 25 Twp: 26S Rge: 13W

Other Services  
 CNL / CDL  
 DIL

Permanent Datum Ground Level Elevation 1926  
 Log Measured From Kelly Bushing 13 Ft. Above Perm. Datum  
 Drilling Measured From Kelly Bushing

Elevation  
 K.B. 1939  
 D.F.  
 G.L. 1926

Date	5/13/2012	
Run Number	Two	
Depth Driller	4305	
Depth Logger	4306	
Bottom Logged Interval	4305	
Top Log Interval	1700	
Casing Driller	8.625 @ 316	
Casing Logger	312	
Bit Size	7.875	
Type Fluid in Hole	Chemical	
Salinity, ppm CL	5000	
Density / Viscosity	9.2 48	
pH / Fluid Loss	10.5 9.0	
Source of Sample	Flowline	
Rm @ Meas. Temp	0.36 @ 75	
Rmf @ Meas. Temp	0.27 @ 75	
Rmc @ Meas. Temp	0.49 @ 75	
Source of Rmf / Rmc	Charts	
Rm @ BHT	0.23 @ 119	
Operating Rig Time	6 Hours	
Max Rec. Temp. F	119	
Equipment Number	15	
Location	Hays	
Recorded By	R. Barnhart	
Witnessed By	Ed Harger	

<<< Fold Here >>>

All interpretations are opinions based on inferences from electrical or other measurements and we cannot and do not guarantee the accuracy or correctness of any interpretation, and we shall not, except in the case of gross or willful negligence on our part, be liable or responsible for any loss, costs, damages, or expenses incurred or sustained by anyone resulting from any interpretation made by any of our officers, agents or employees. These interpretations are also subject to our general terms and conditions set out in our current Price Schedule.

Comments

Thank you for using Log-Tech, Inc.  
 (785) 625-3858

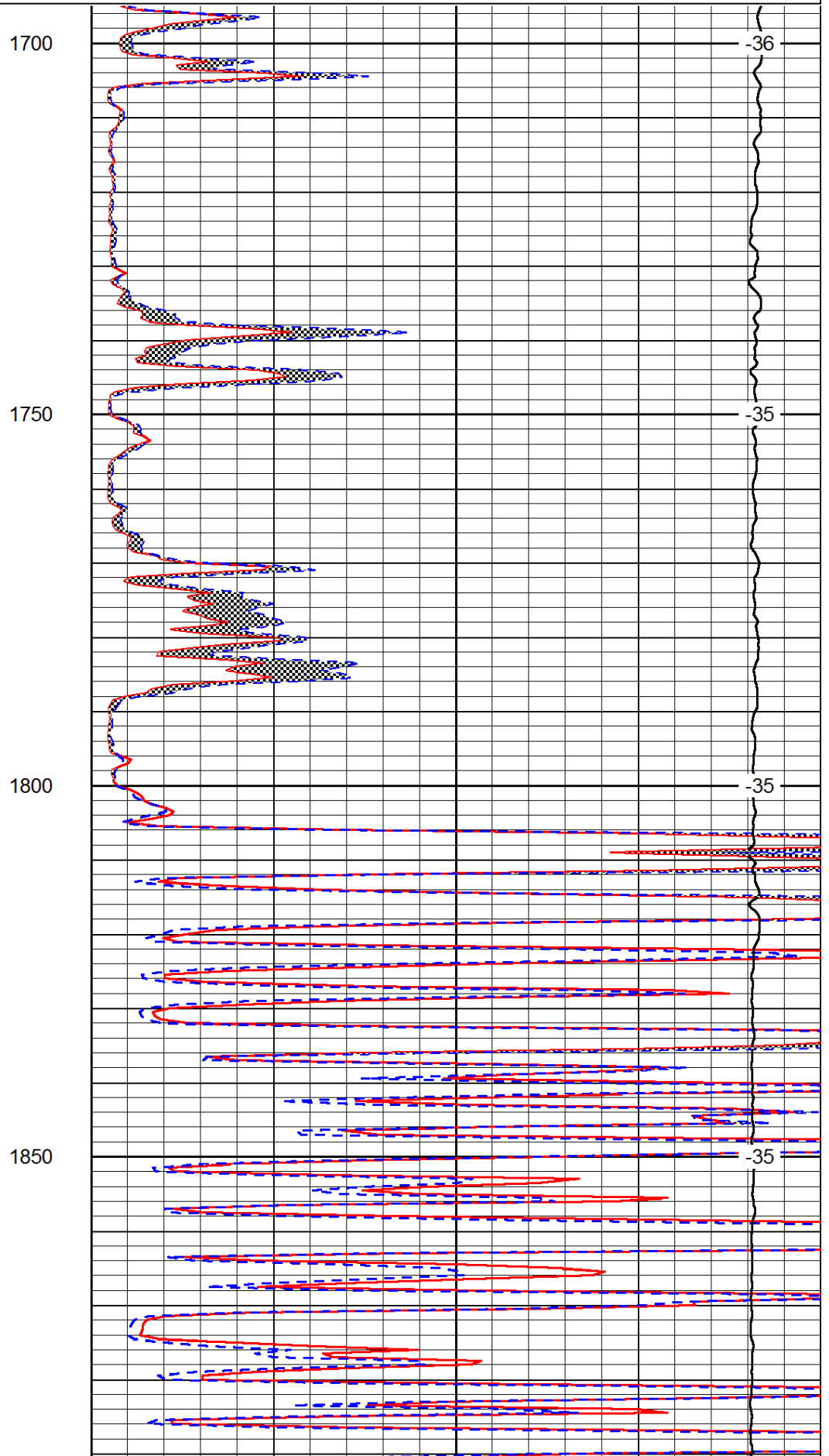
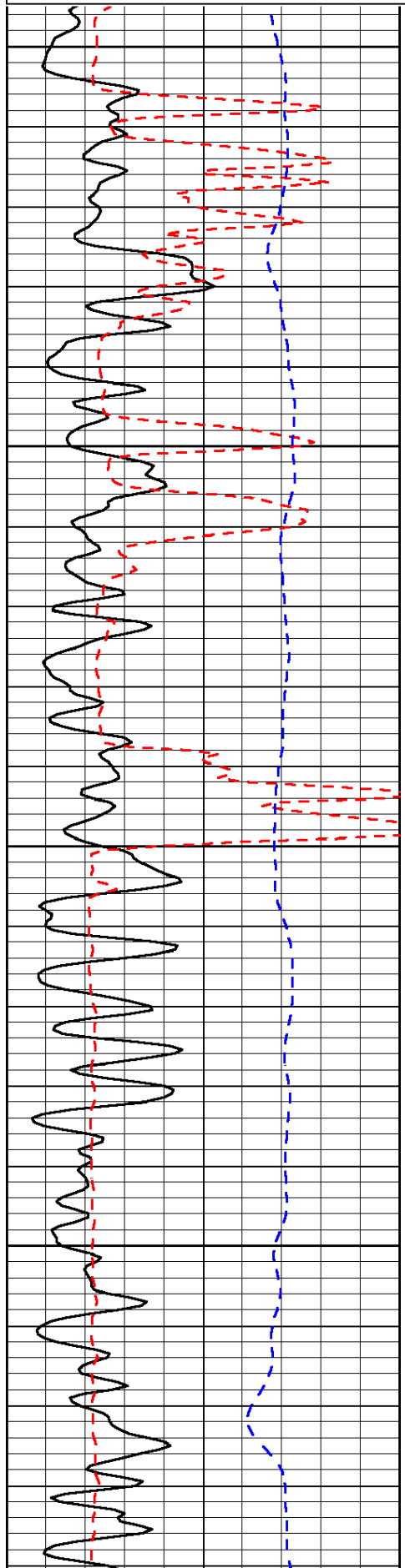
luka, KS:  
 N edge: 4E on Blktop,  
 1N, W into

Database File: c:\warrior\data\timberline\_w. hoener #1\timberhd.db  
 Dataset Pathname: dil/timmain  
 Presentation Format: micro  
 Dataset Creation: Sun May 13 23:12:14 2012  
 Charted by: Depth in Feet scaled 1:240

0	Gamma Ray	150
6	Micro Log Caliper (GAPI)	16
-200	SP (mV)	0

0	Micro Inverse 1 X 1	40
0	Micro Normal 2"	40
15000	Line Weight	0

LSPD



1700

-36

1750

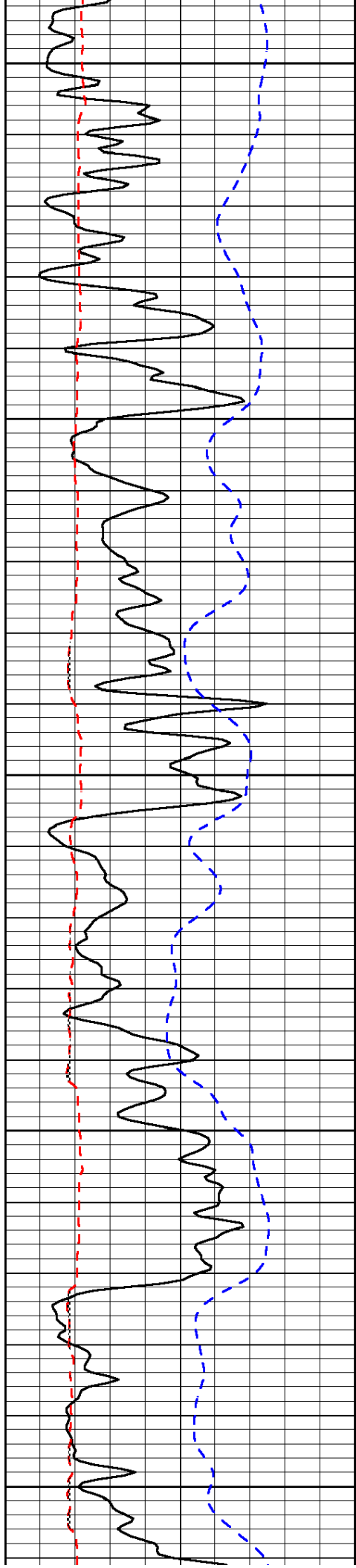
-35

1800

-35

1850

-35



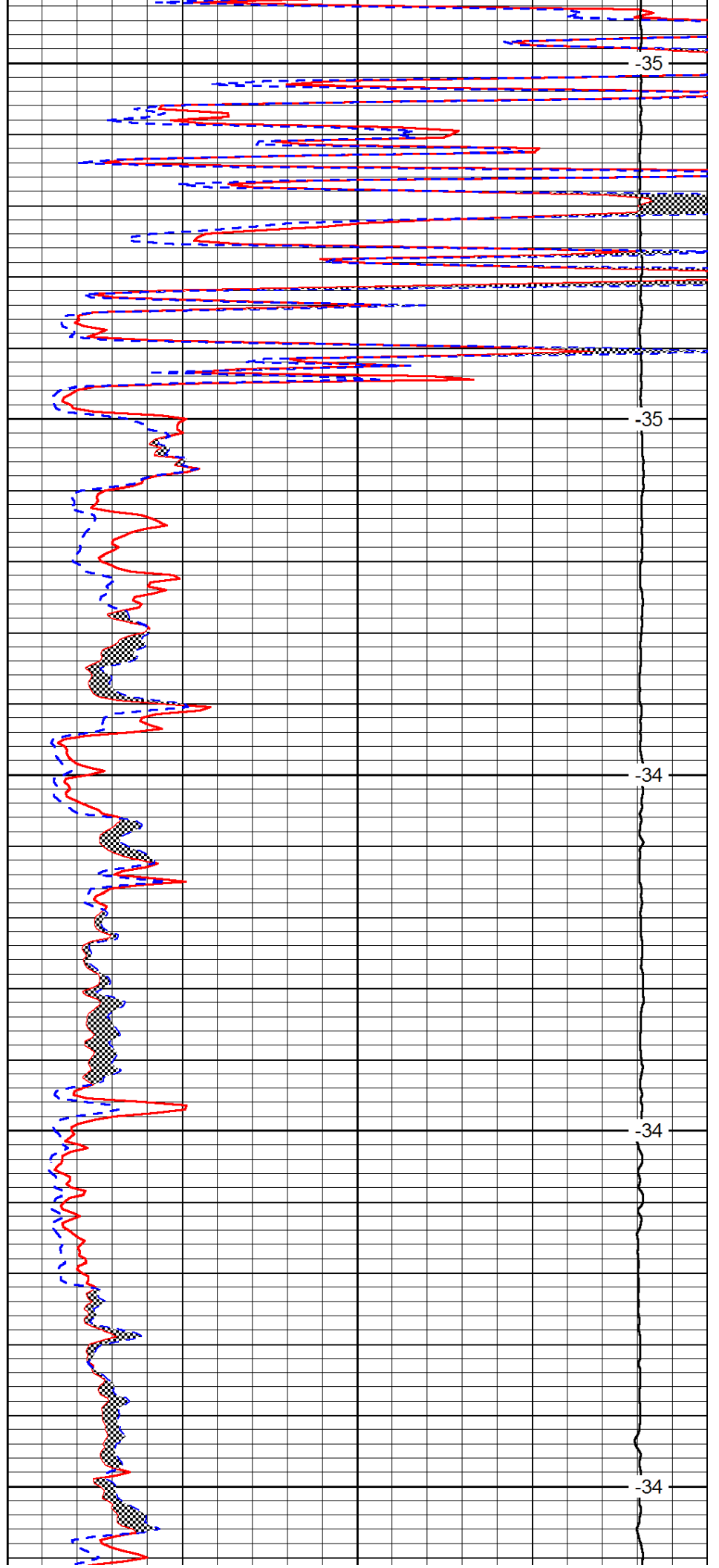
1900

1950

2000

2050

2100



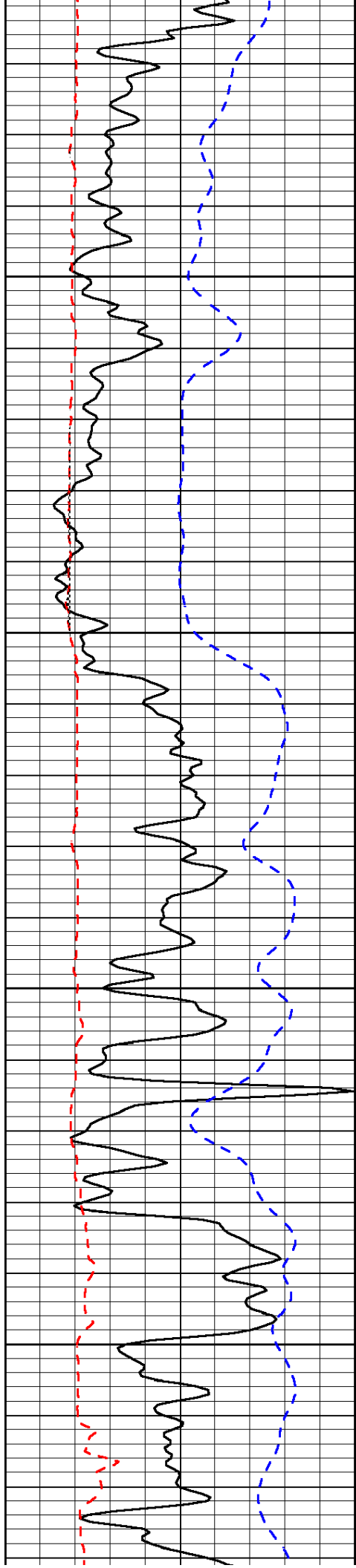
-35

-35

-34

-34

-34

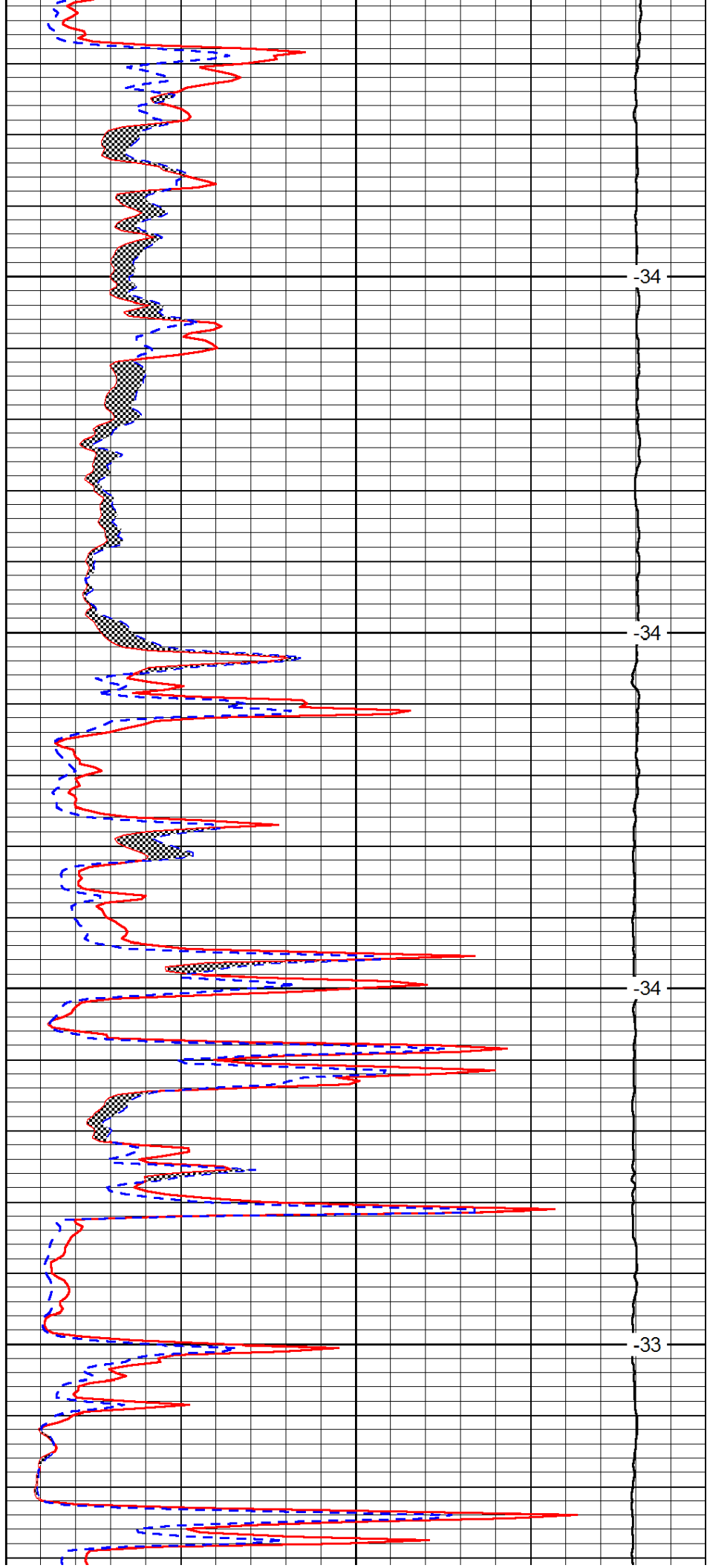


2150

2200

2250

2300

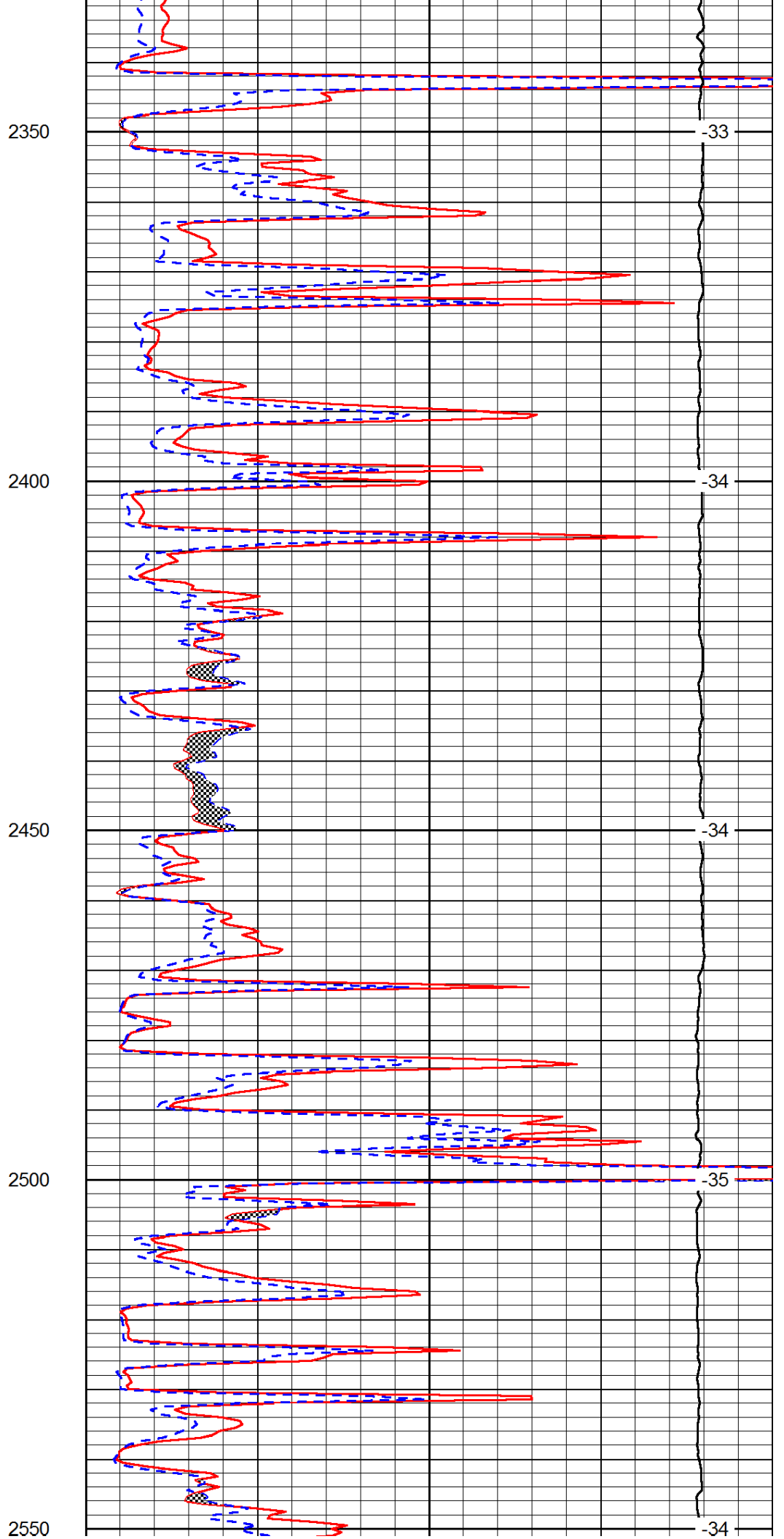
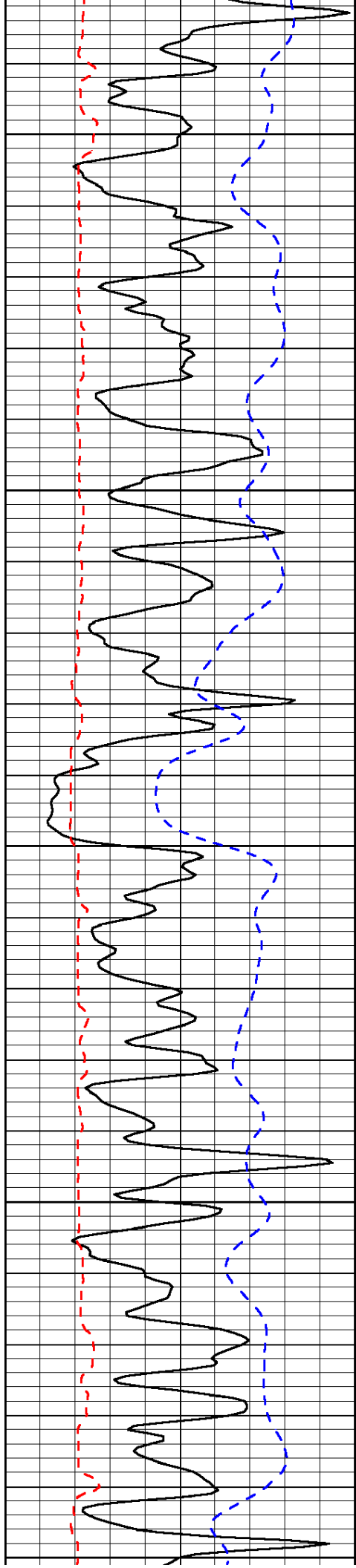


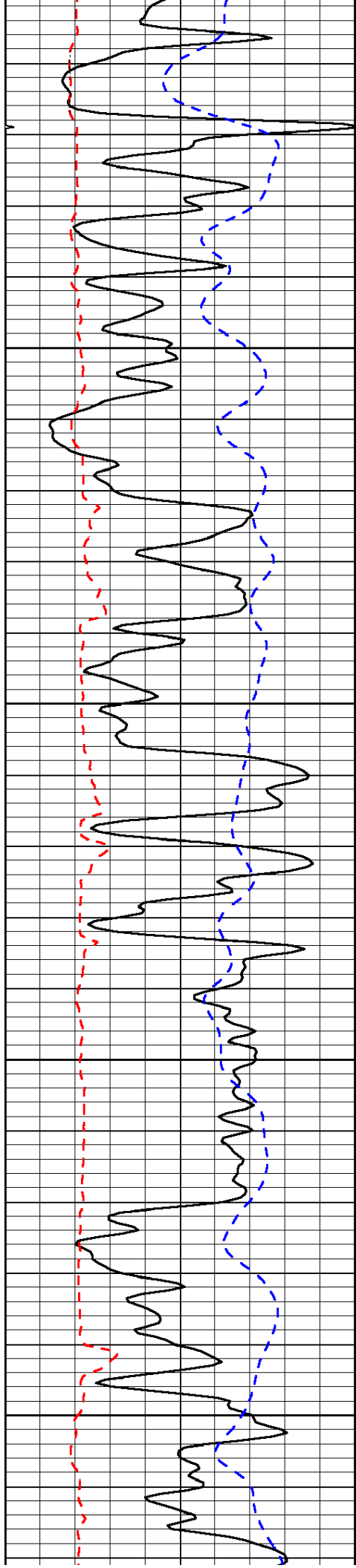
-34

-34

-34

-33



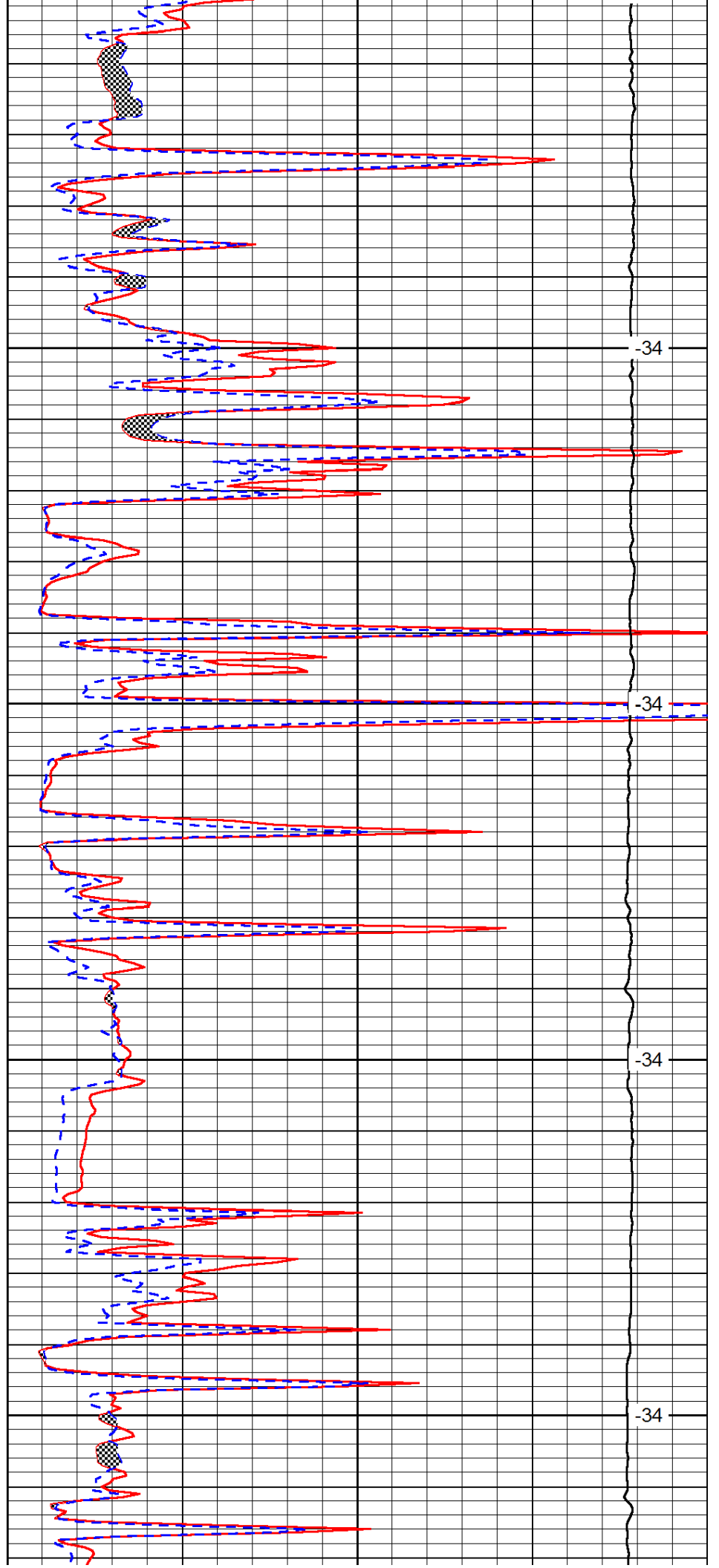


2600

2650

2700

2750

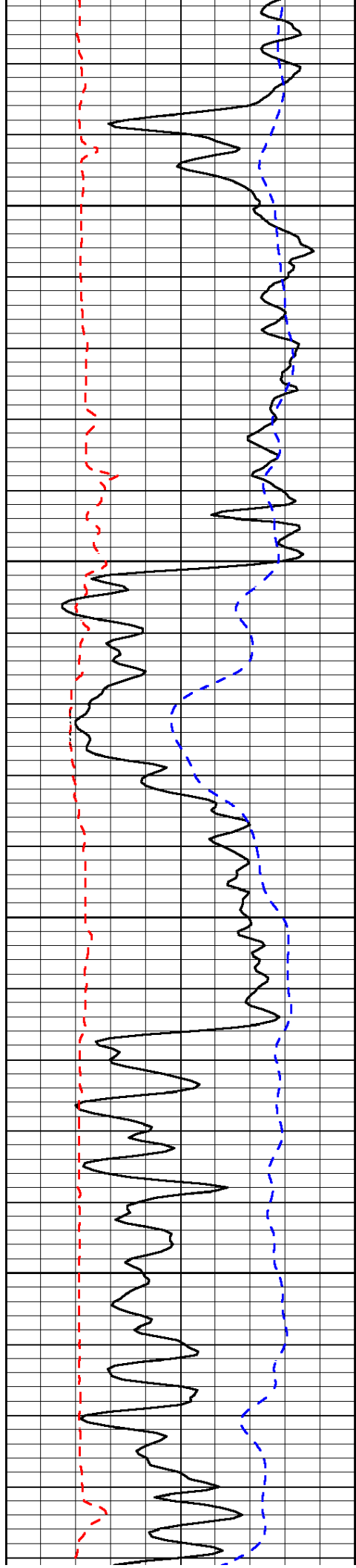


-34

-34

-34

-34

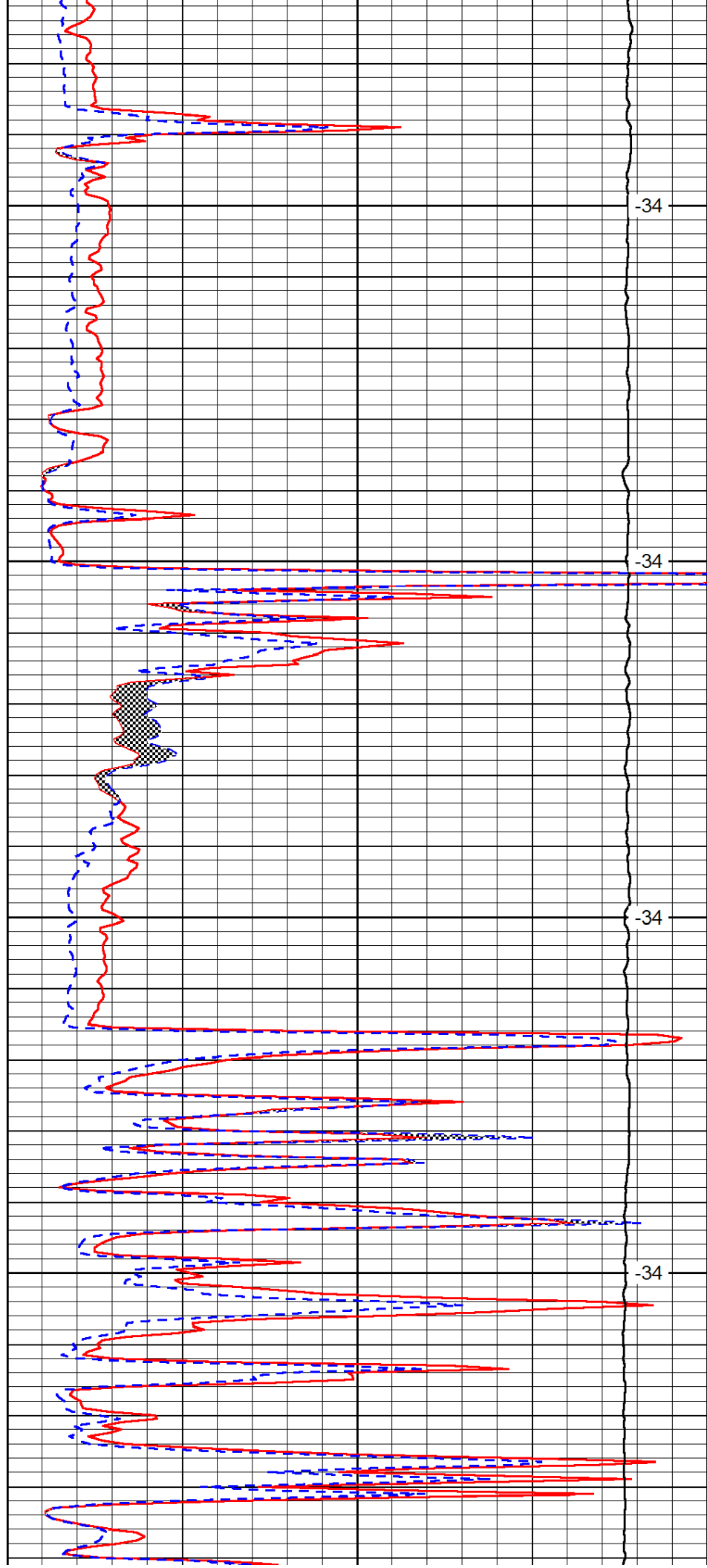


2800

2850

2900

2950

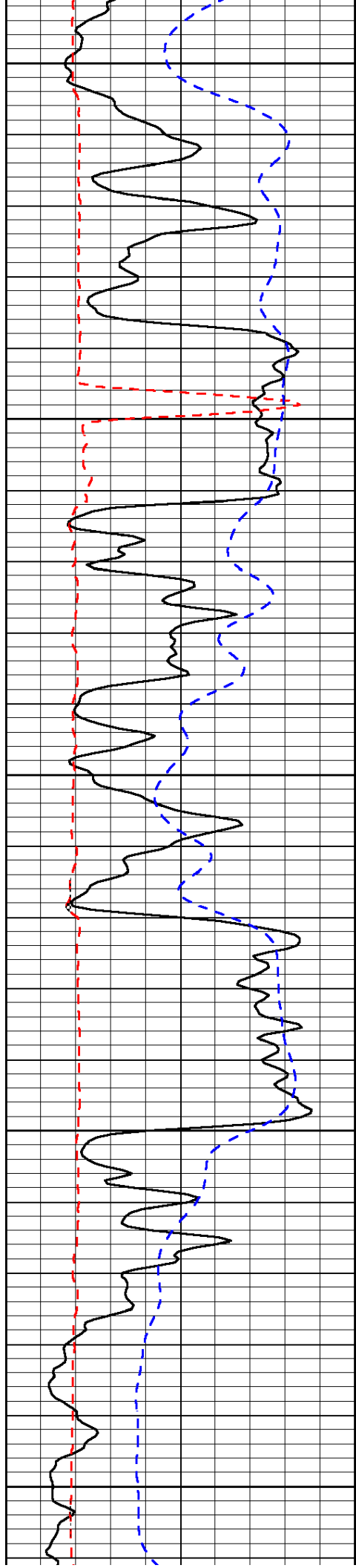


-34

-34

-34

-34



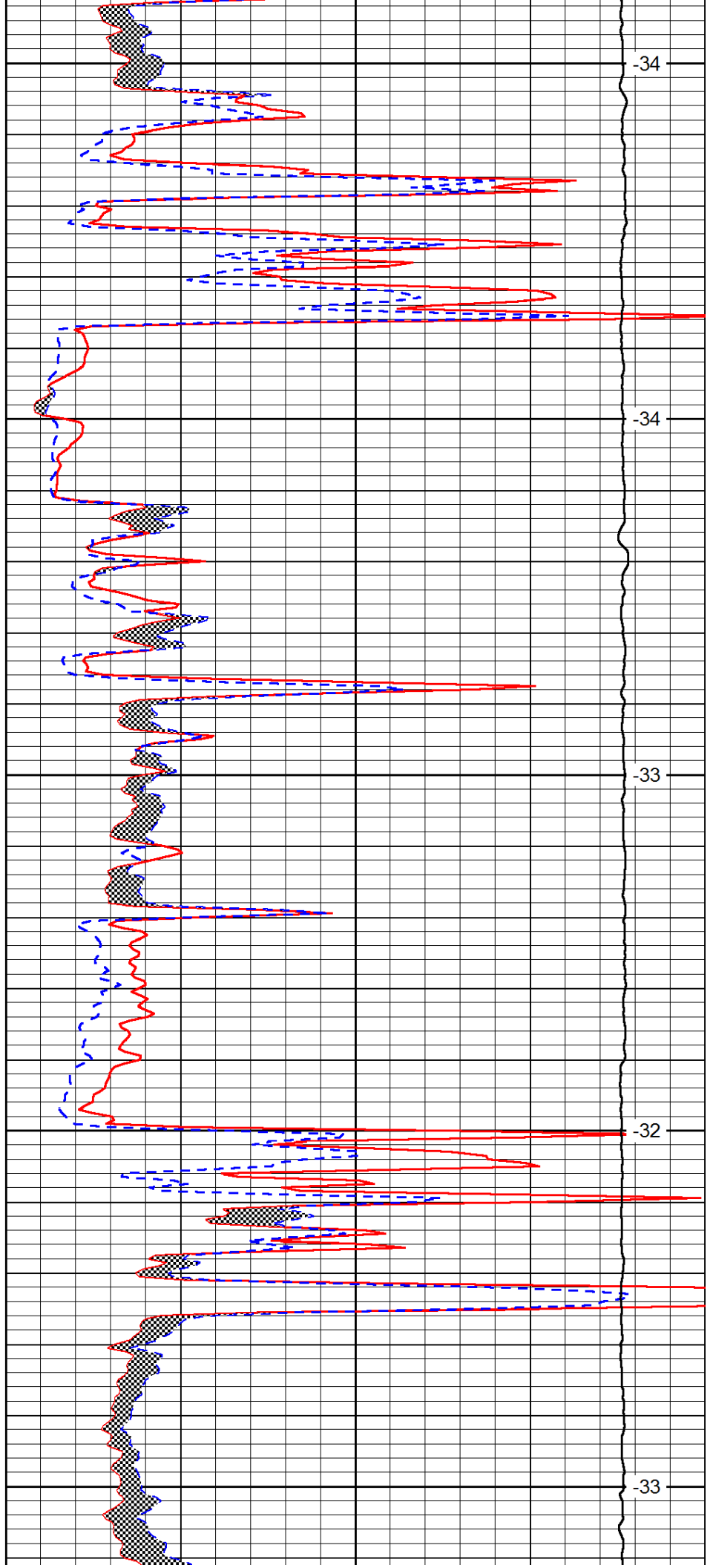
3000

3050

3100

3150

3200



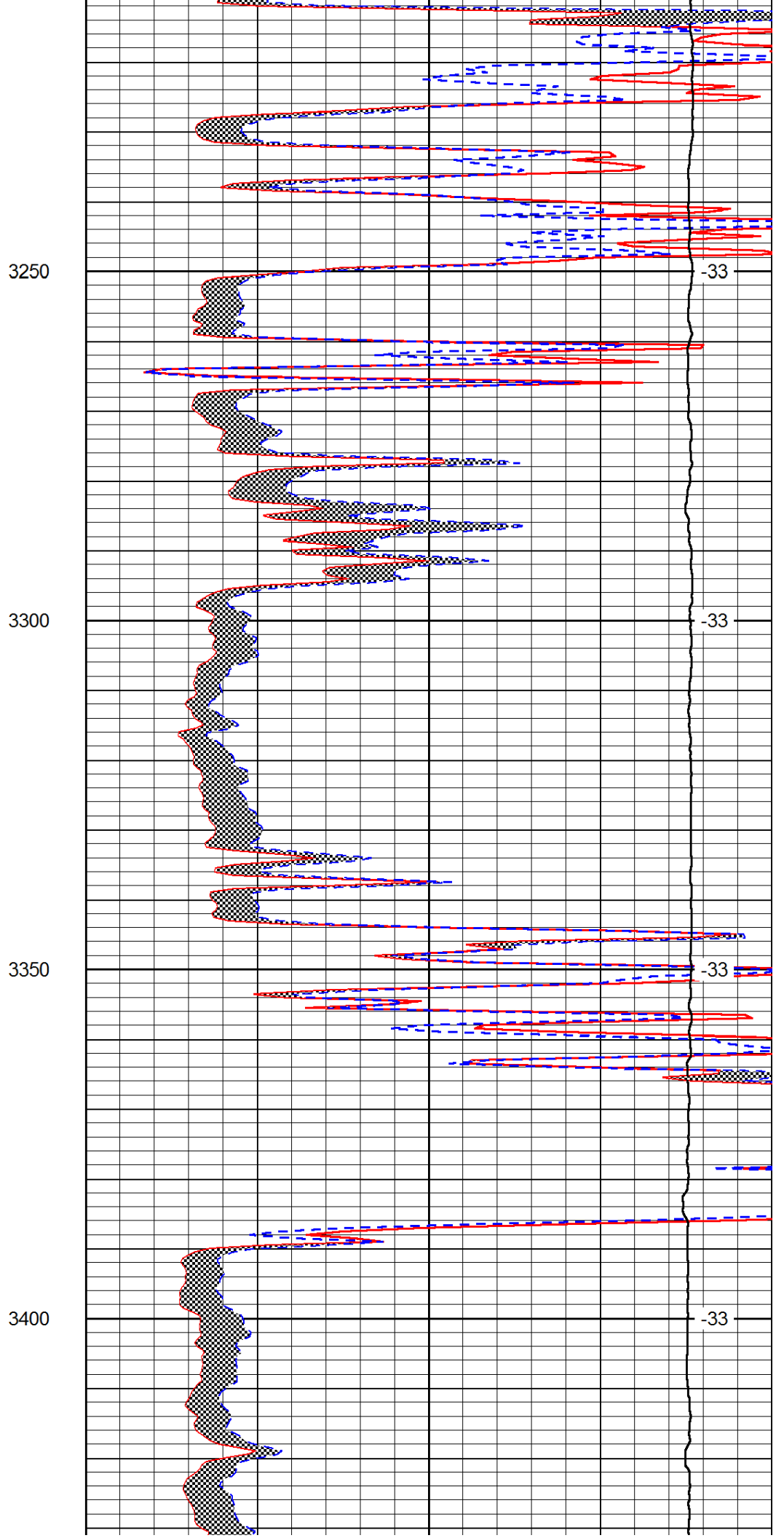
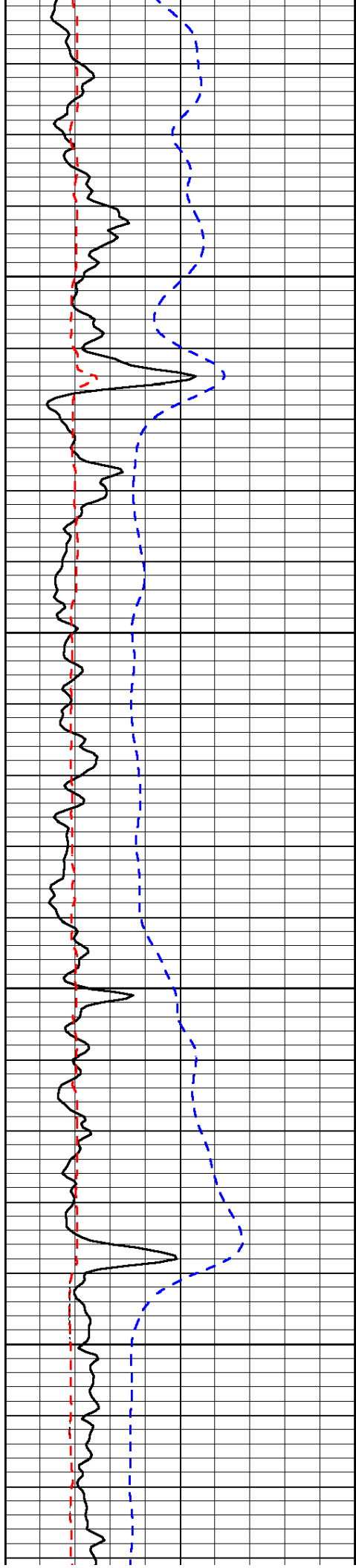
-34

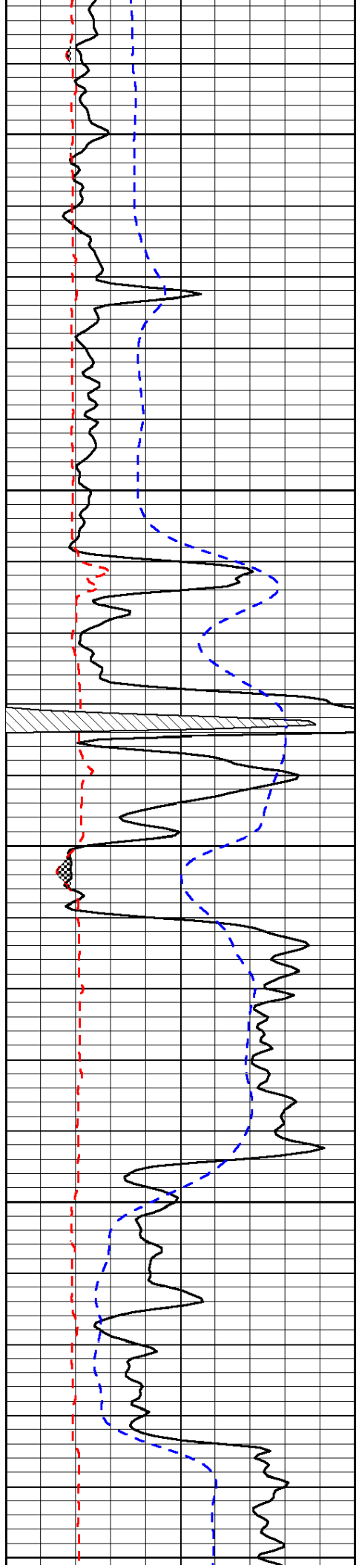
-34

-33

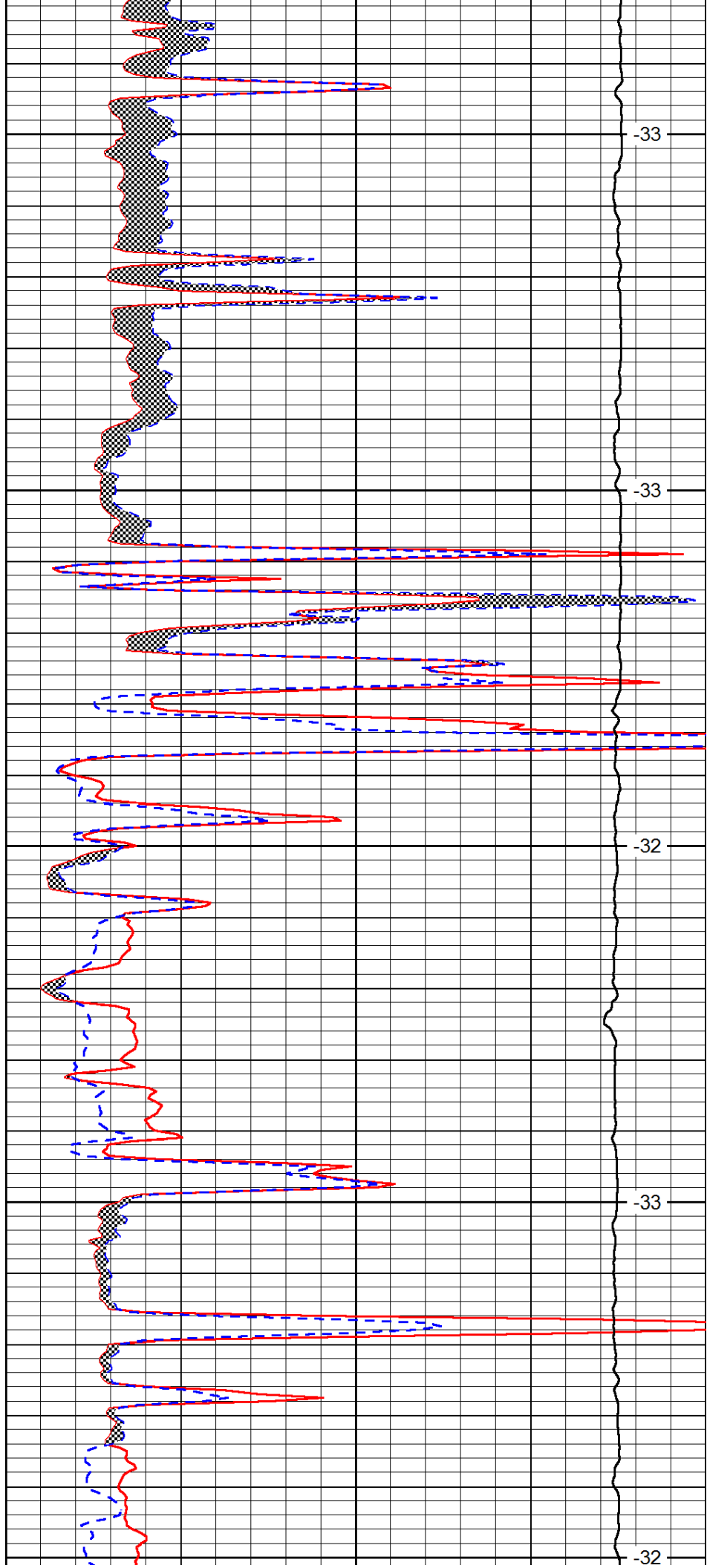
-32

-33

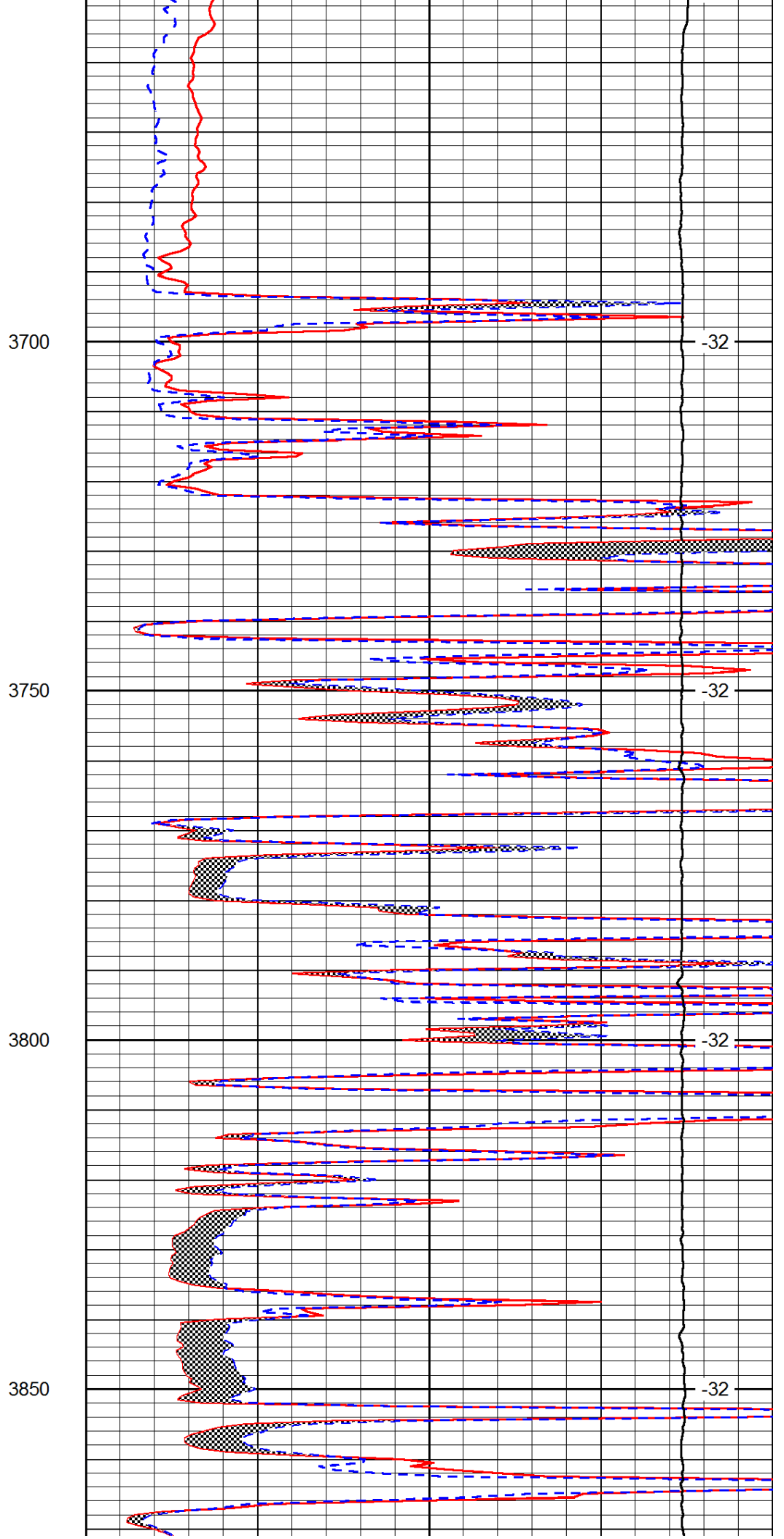
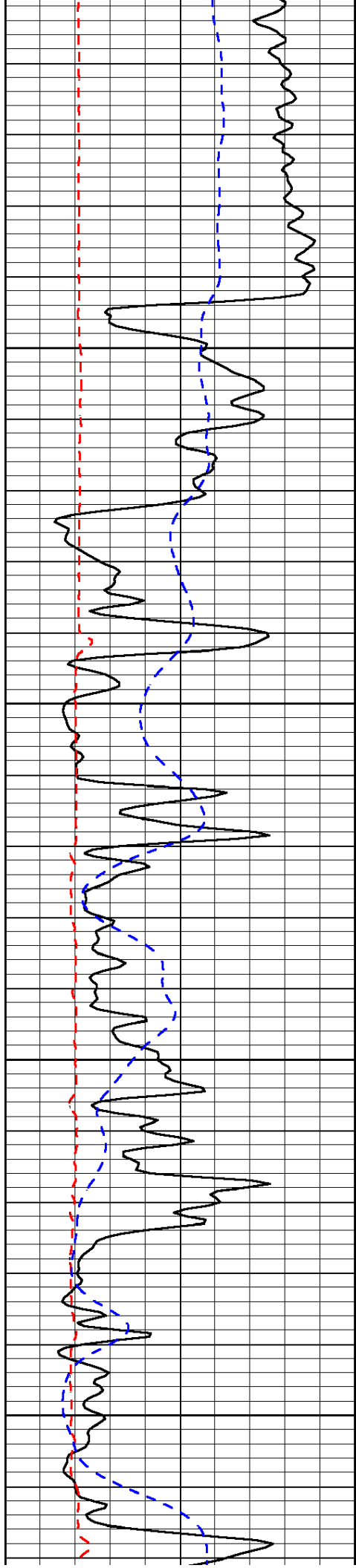


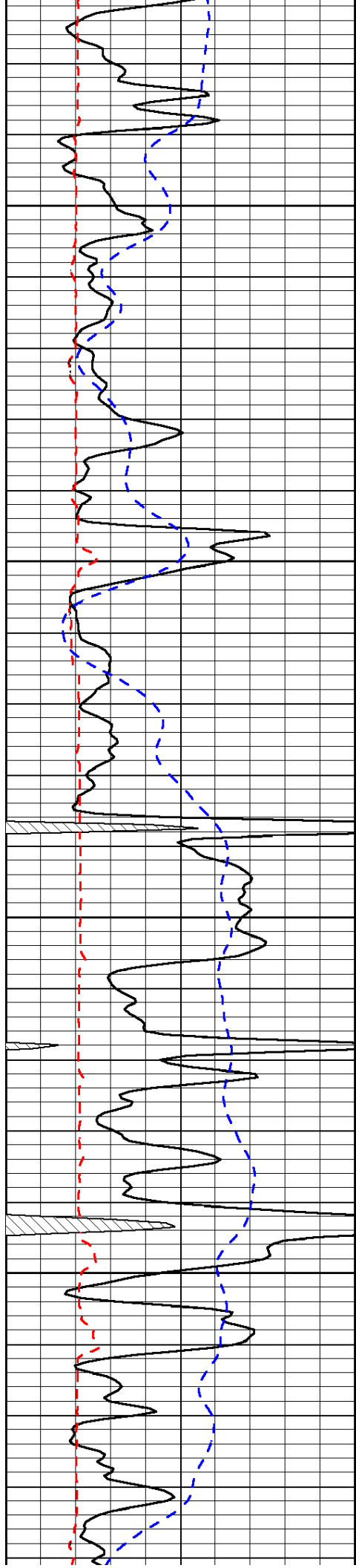


3450  
3500  
3550  
3600  
3650



-33  
-33  
-32  
-33  
-32  
-33  
-32



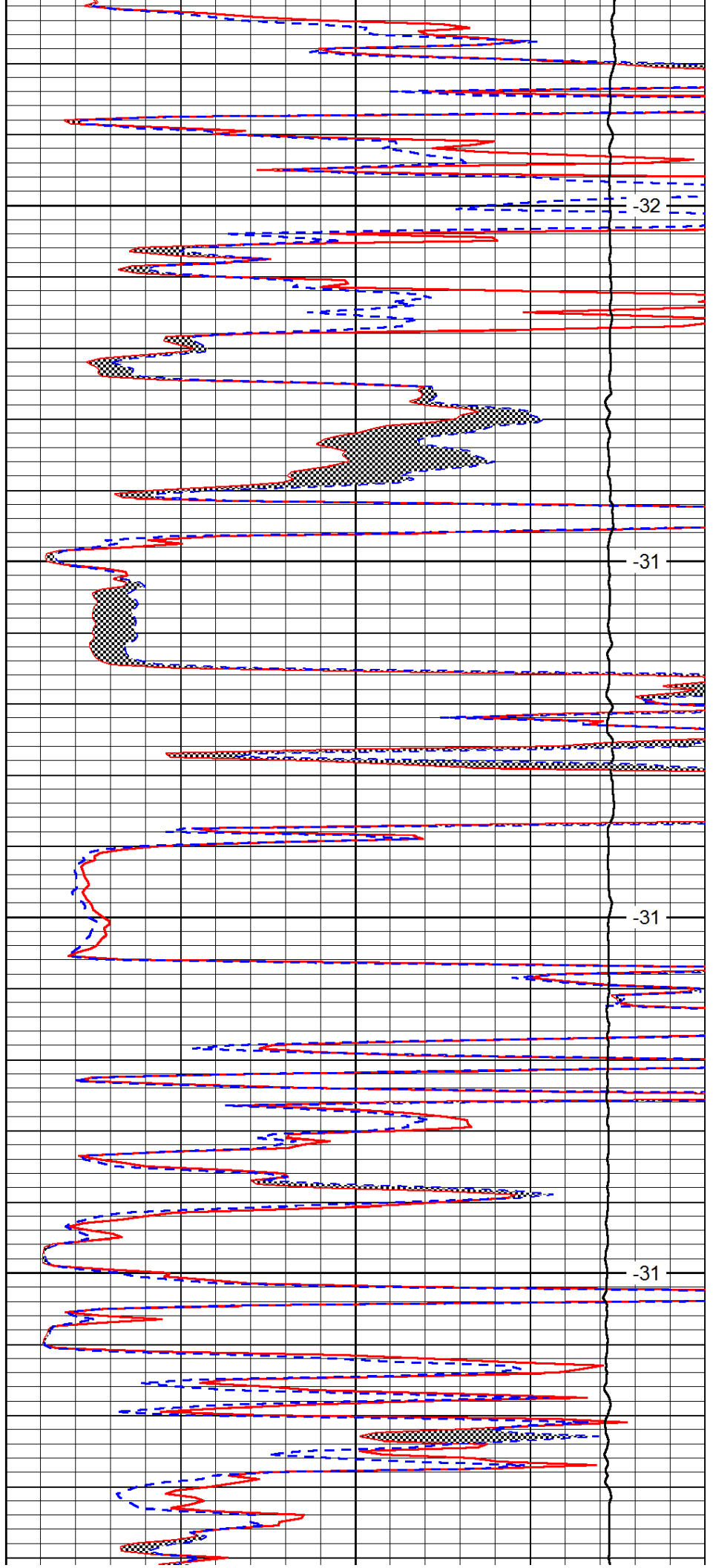


3900

3950

4000

4050

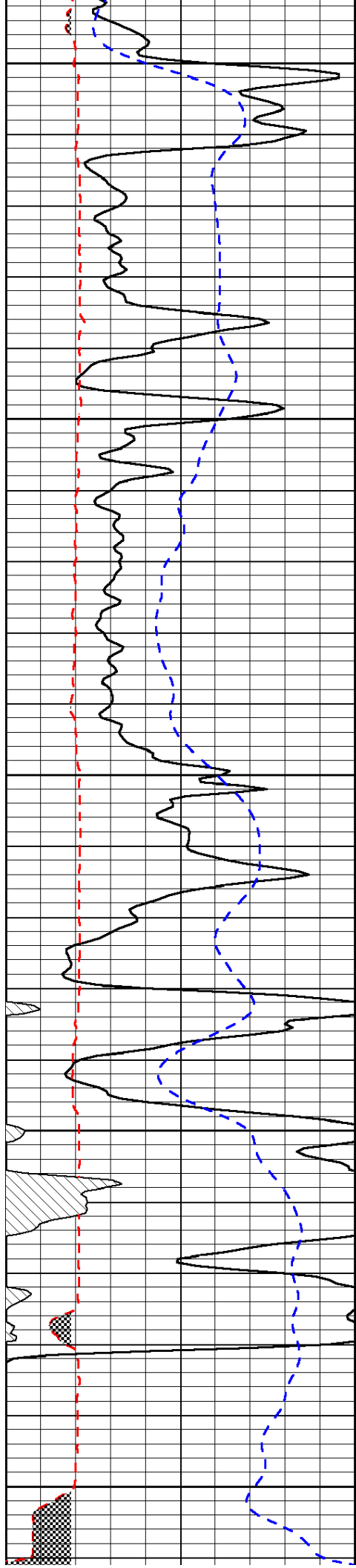


-32

-31

-31

-31



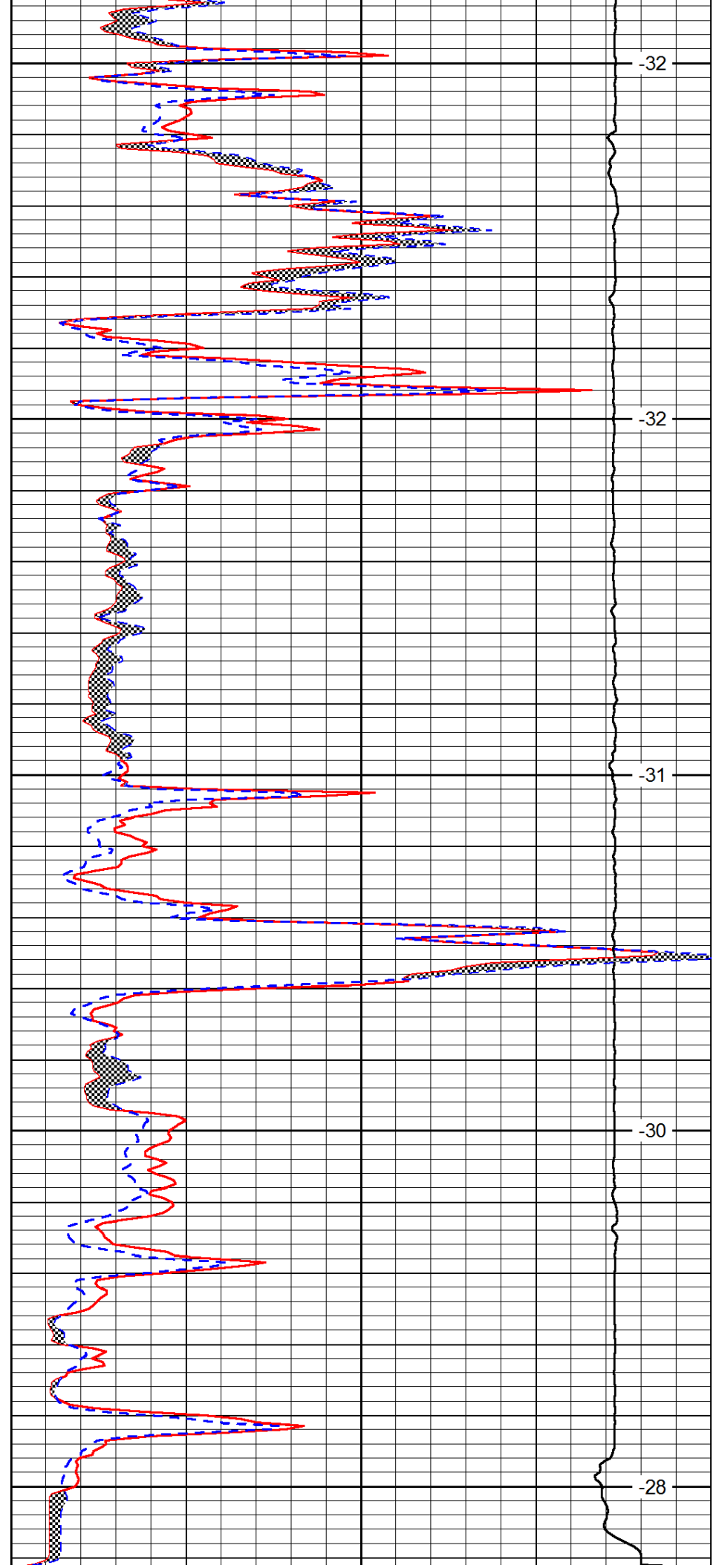
4100

4150

4200

4250

4300



-32

-32

-31

-30

-28

0	Gamma Ray	150
6	Micro Log Caliper (GAPI)	16
-200	SP (mV)	0

0	Micro Inverse 1 X 1	40
0	Micro Normal 2"	40
15000	Line Weight	0

LSPD