



DIGITAL LOG (785) 625-3858

Dual Induction Log

15-151-22391-00-00

API No.

Company Timberline Oil & Gas Corporation
 Well W. Hoener #1
 Field luka-Carmi
 County Pratt State Kansas

Location N2 S2 NE
 3743' FSL / 1383' FEL

Sec: 25 Twp: 26S Rge: 13W

Permanent Datum Ground Level Elevation 1926
 Log Measured From Kelly Bushing 13 Ft. Above Perm. Datum
 Drilling Measured From Kelly Bushing

Other Services
 CNL / CDL
 MEL
 Elevation
 K.B. 1939
 D.F.
 G.L. 1926

Date	5/13/2012	
Run Number	One	
Depth Driller	4305	
Depth Logger	4306	
Bottom Logged Interval	4305	
Top Log Interval	300	
Casing Driller	8.625 @ 316	
Casing Logger	312	
Bit Size	7.875	
Type Fluid in Hole	Chemical	
Salinity, ppm CL	5000	
Density / Viscosity	9.2 48	
pH / Fluid Loss	10.5 9.0	
Source of Sample	Flowline	
Rm @ Meas. Temp	0.36 @ 75	
Rmf @ Meas. Temp	0.27 @ 75	
Rmc @ Meas. Temp	0.49 @ 75	
Source of Rmf / Rmc	Charts	
Rm @ BHT	0.23 @ 119	
Operating Rig Time	6 Hours	
Max Rec. Temp. F	119	
Equipment Number	15	
Location	Hays	
Recorded By	R. Barnhart	
Witnessed By	Ed Harger	

<<< Fold Here >>>

All interpretations are opinions based on inferences from electrical or other measurements and we cannot and do not guarantee the accuracy or correctness of any interpretation, and we shall not, except in the case of gross or willful negligence on our part, be liable or responsible for any loss, costs, damages, or expenses incurred or sustained by anyone resulting from any interpretation made by any of our officers, agents or employees. These interpretations are also subject to our general terms and conditions set out in our current Price Schedule.

Comments

Thank you for using Log-Tech, Inc.
 (785) 625-3858

luka, KS:
 N edge: 4E on Blktop,
 1N, W into

Database File: c:\warrior\data\timberline_w. hoener #1\timberhd.db
 Dataset Pathname: dil\timmain
 Presentation Format: dil2in
 Dataset Creation: Sun May 13 23:12:14 2012
 Charted by: Depth in Feet scaled 1:600

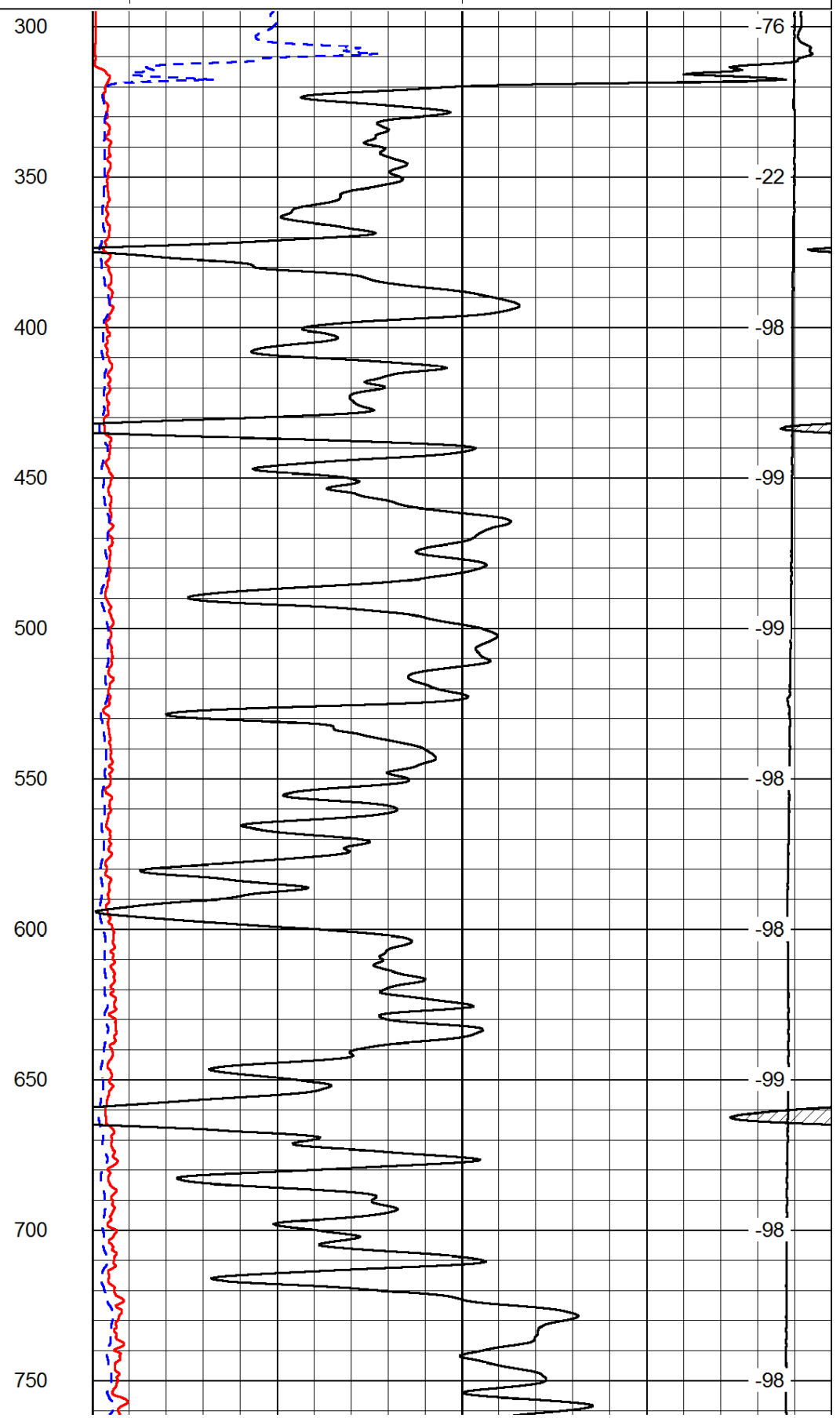
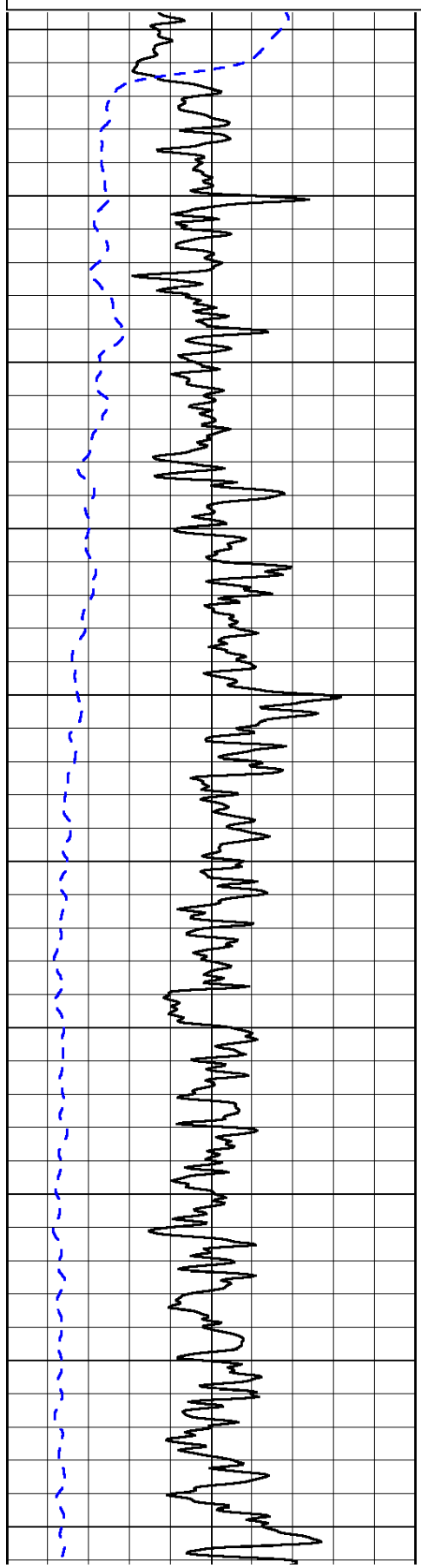
0	Gamma Ray	150
-200	SP (mV)	0

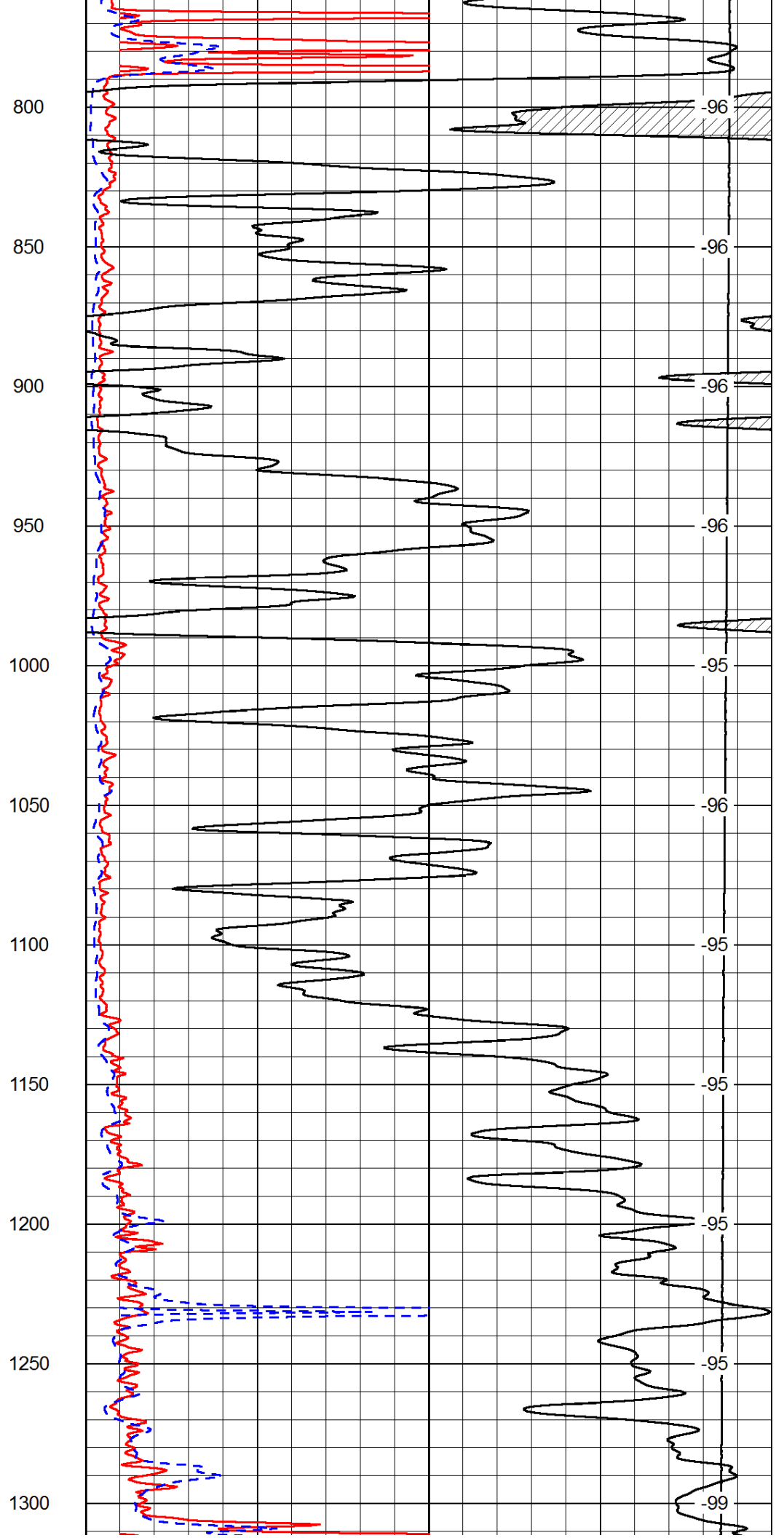
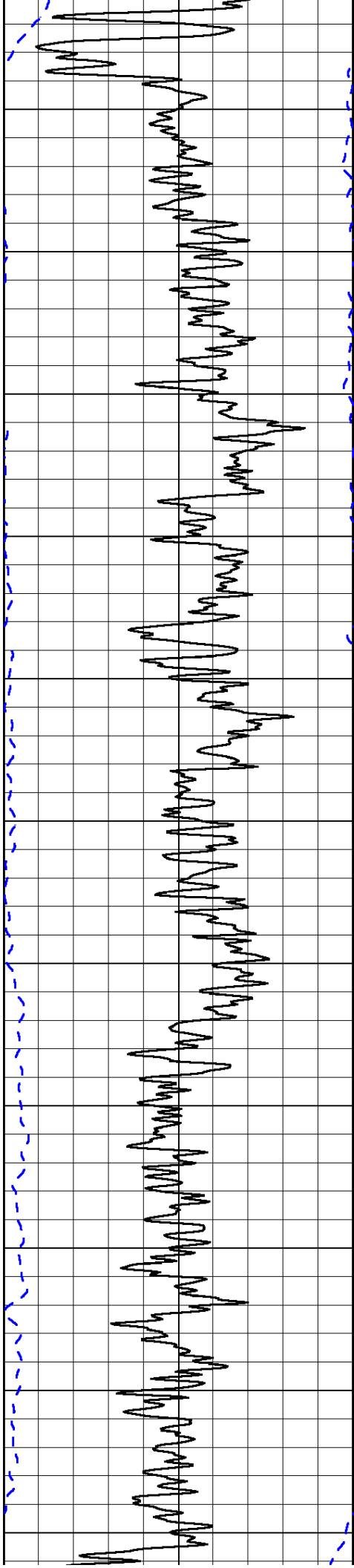
0	Shallow Resistivity	50
0	Deep Resistivity	50

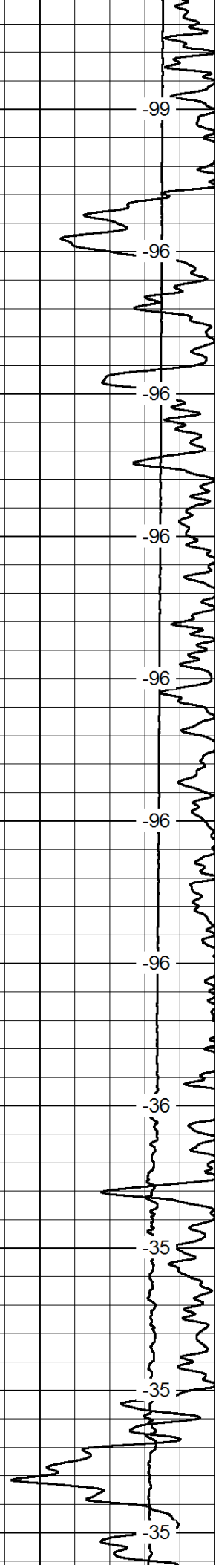
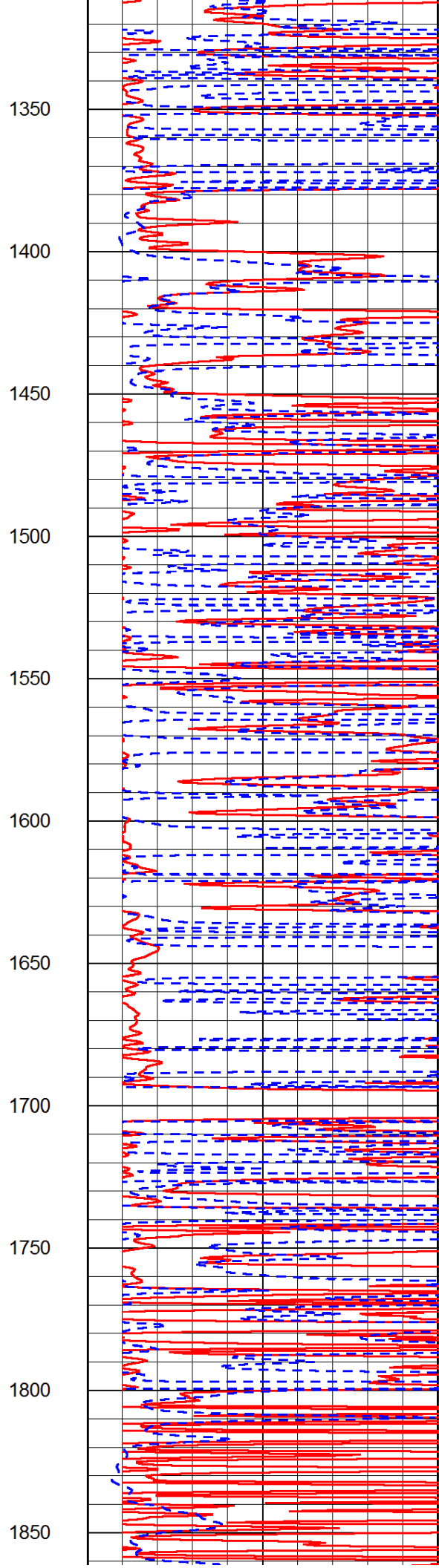
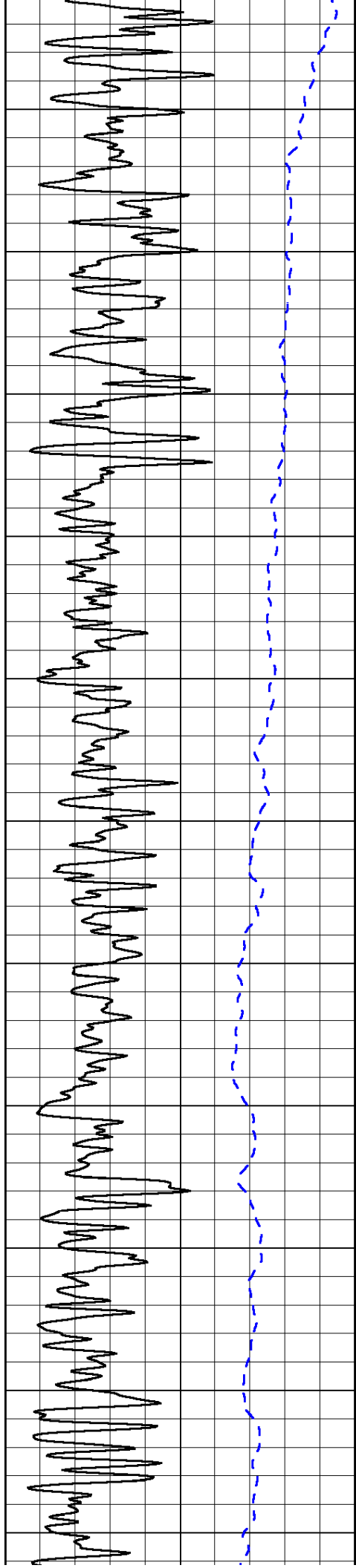
LSPD

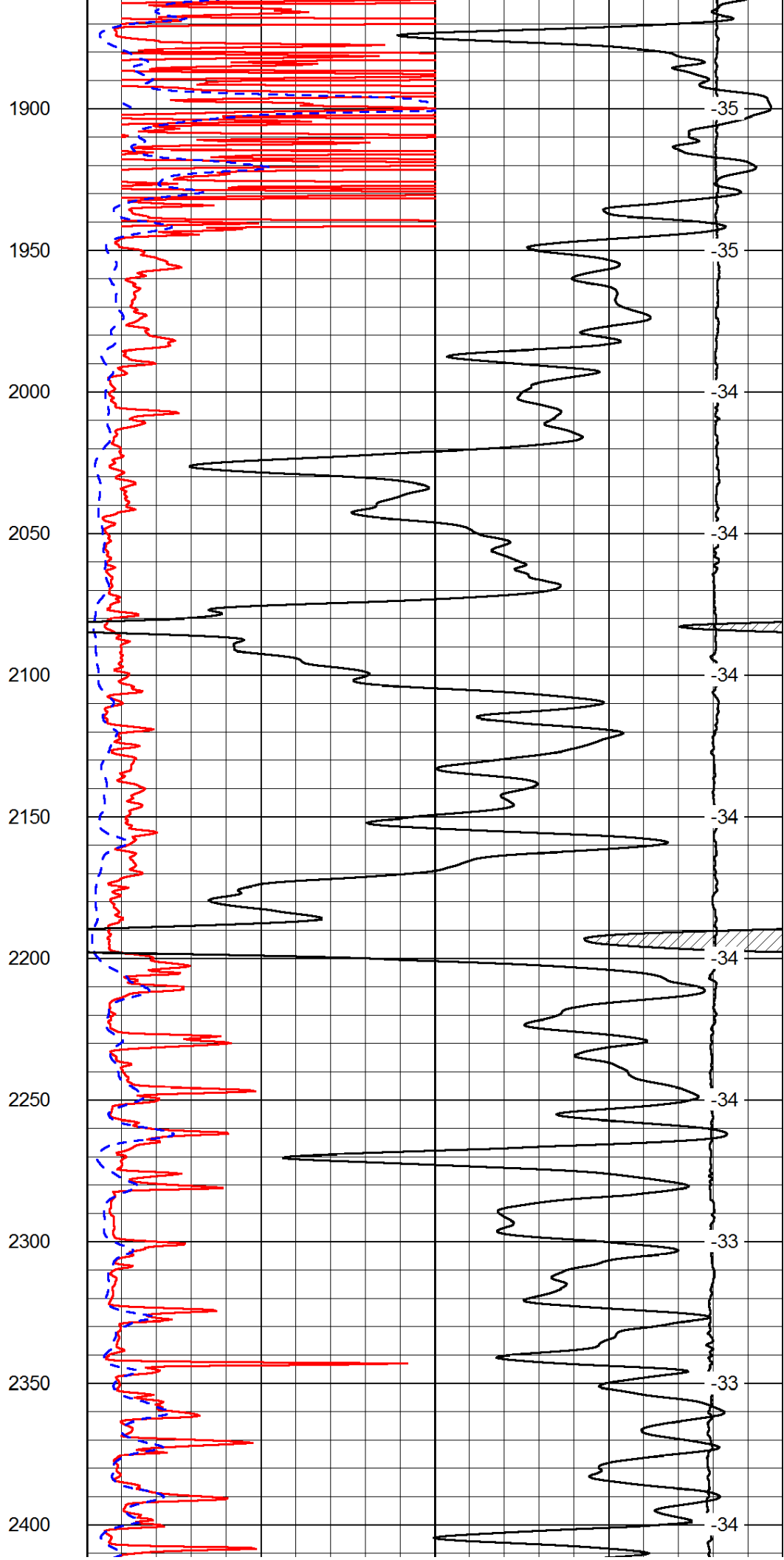
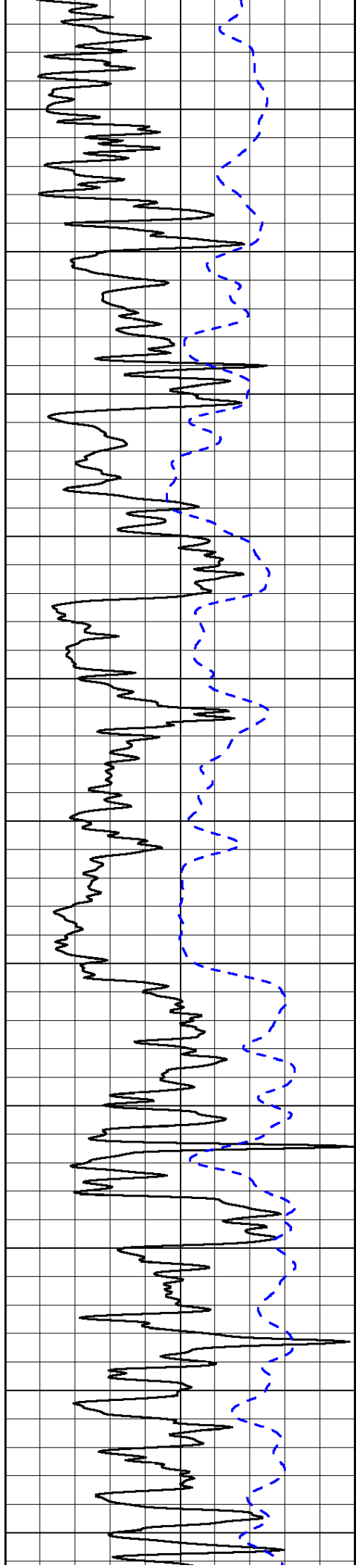
1000	Conductivity	0
15000	Line Tension	0

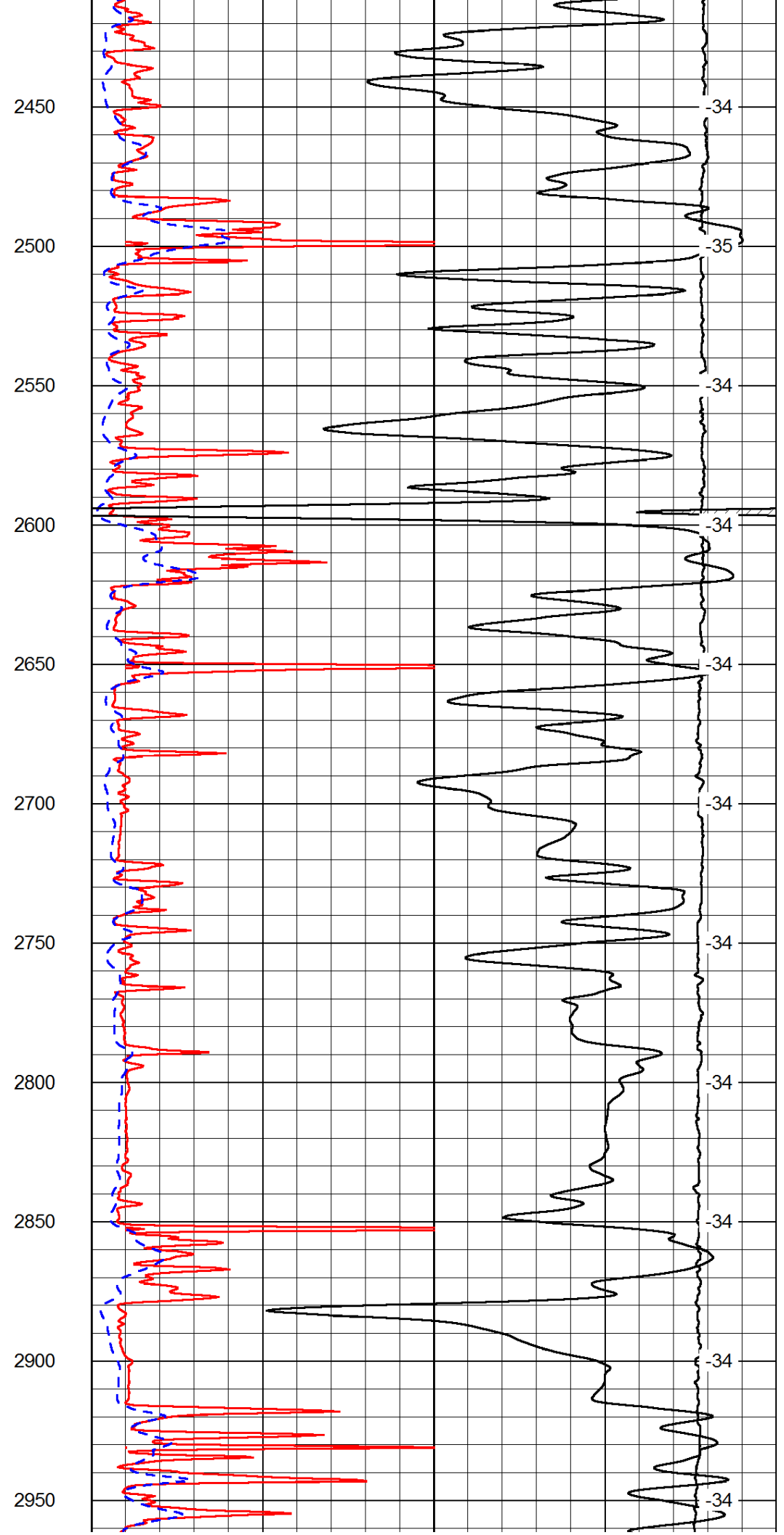
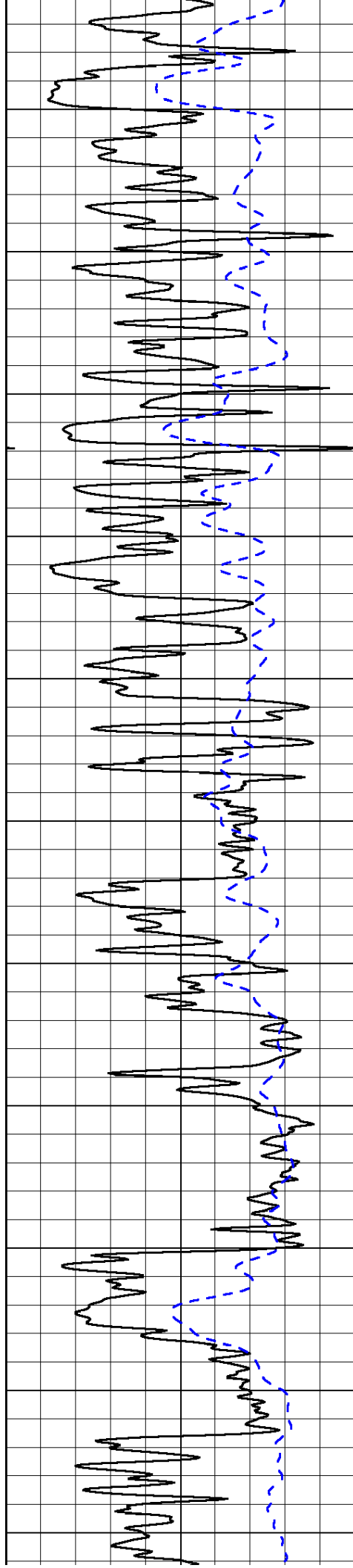
50	Shallow Resistivity	500
50	Deep Resistivity	500

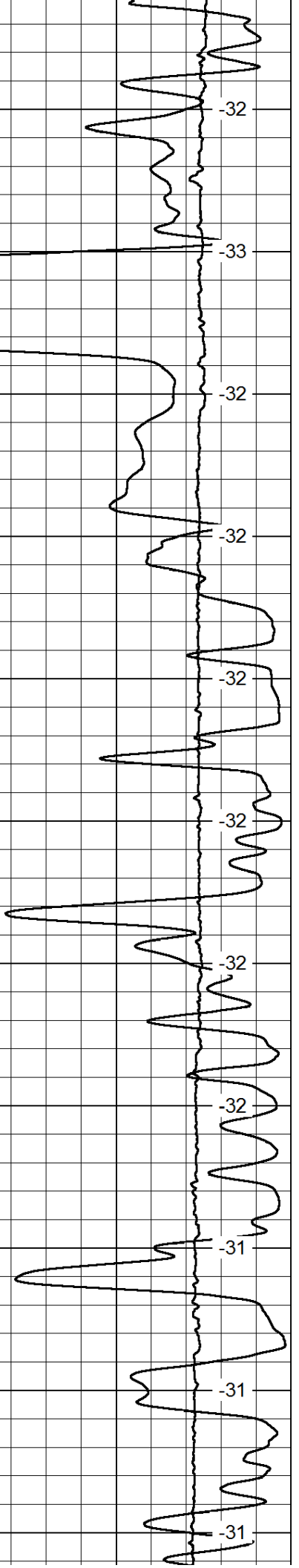
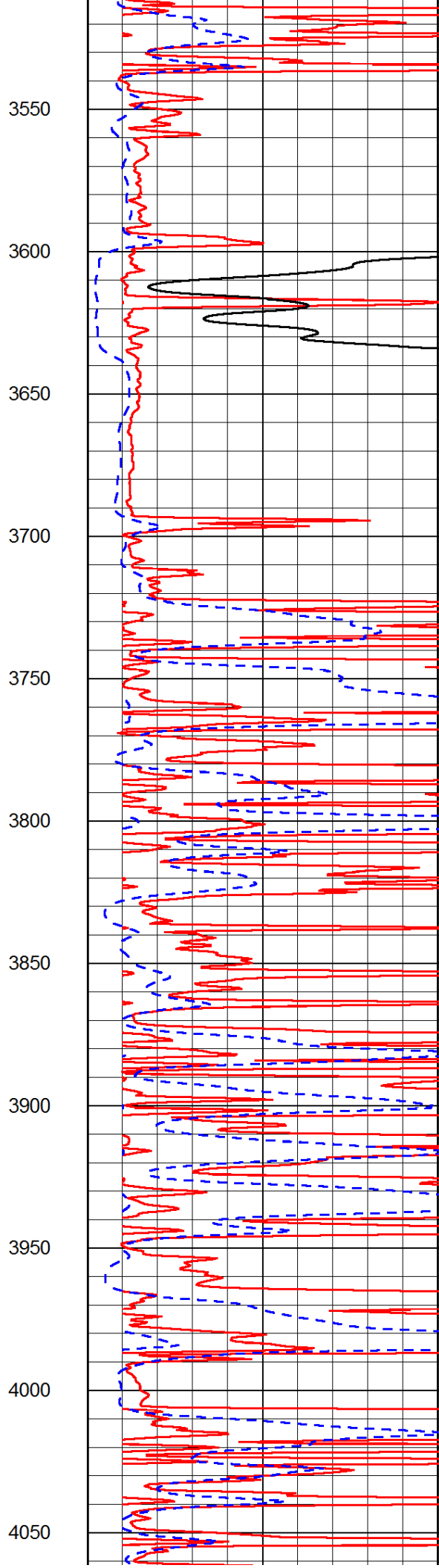
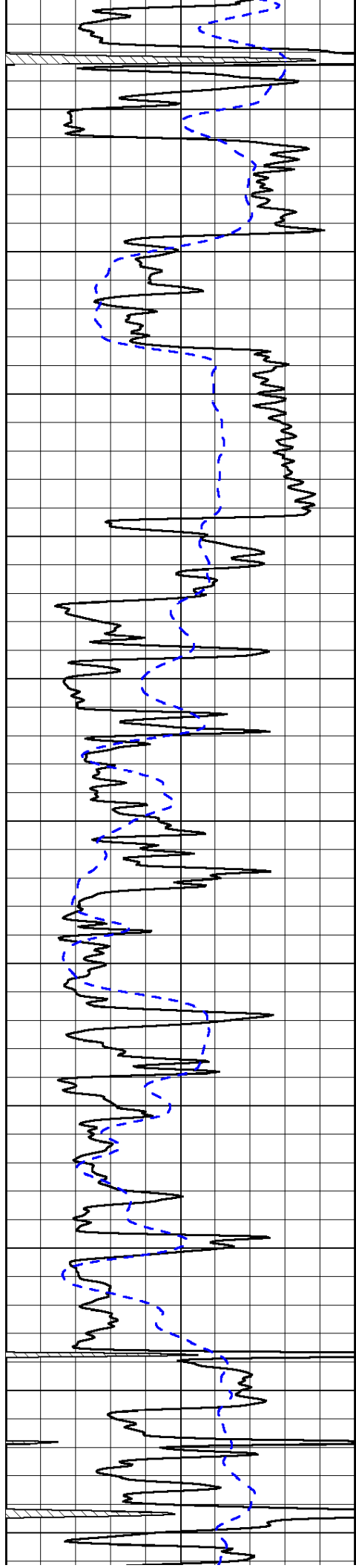


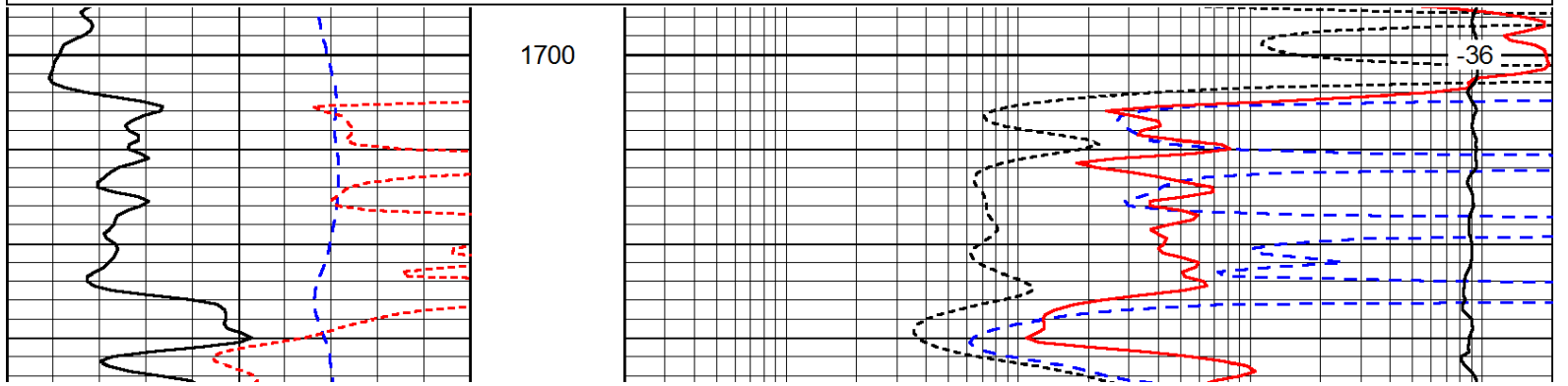
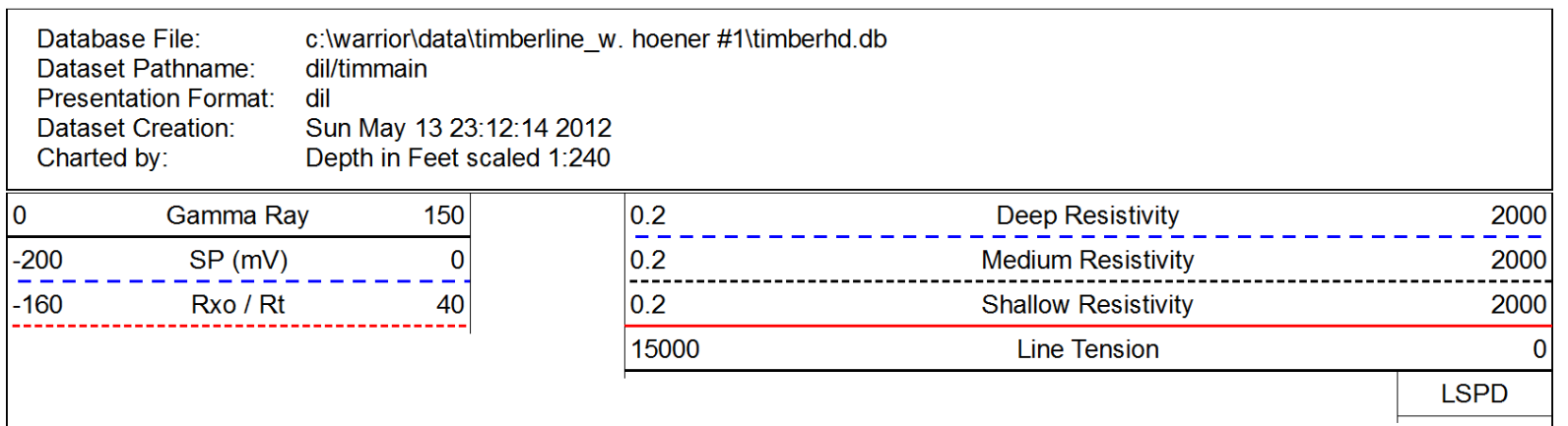
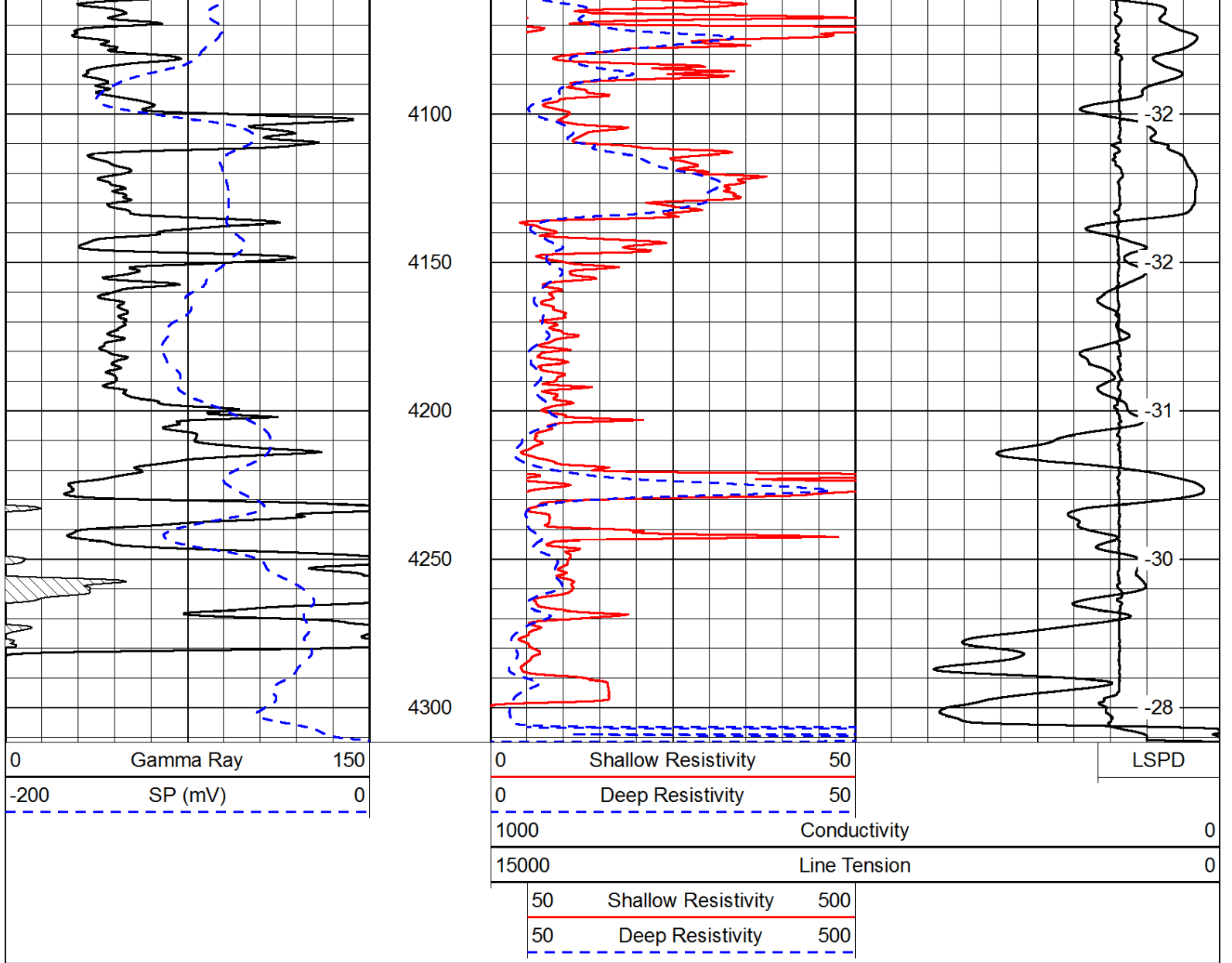


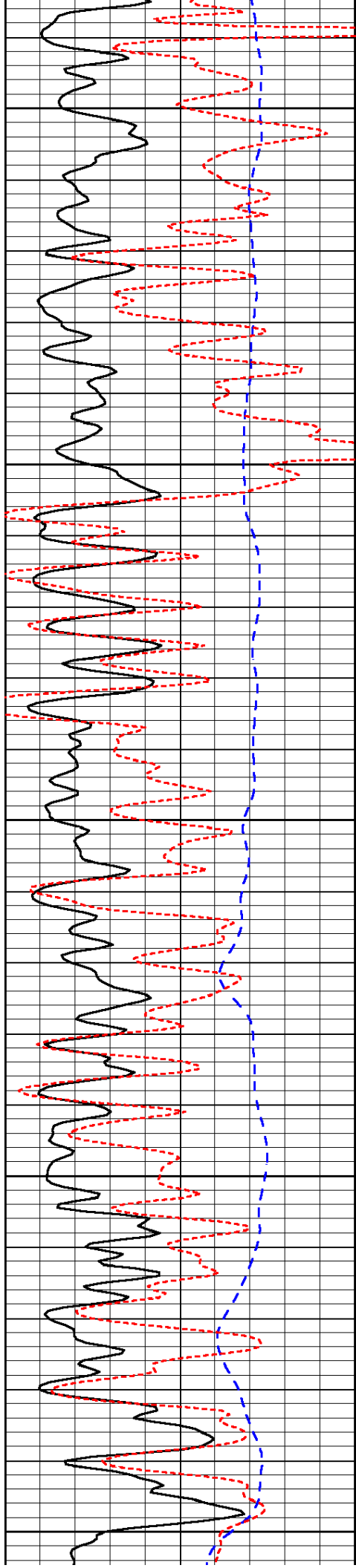












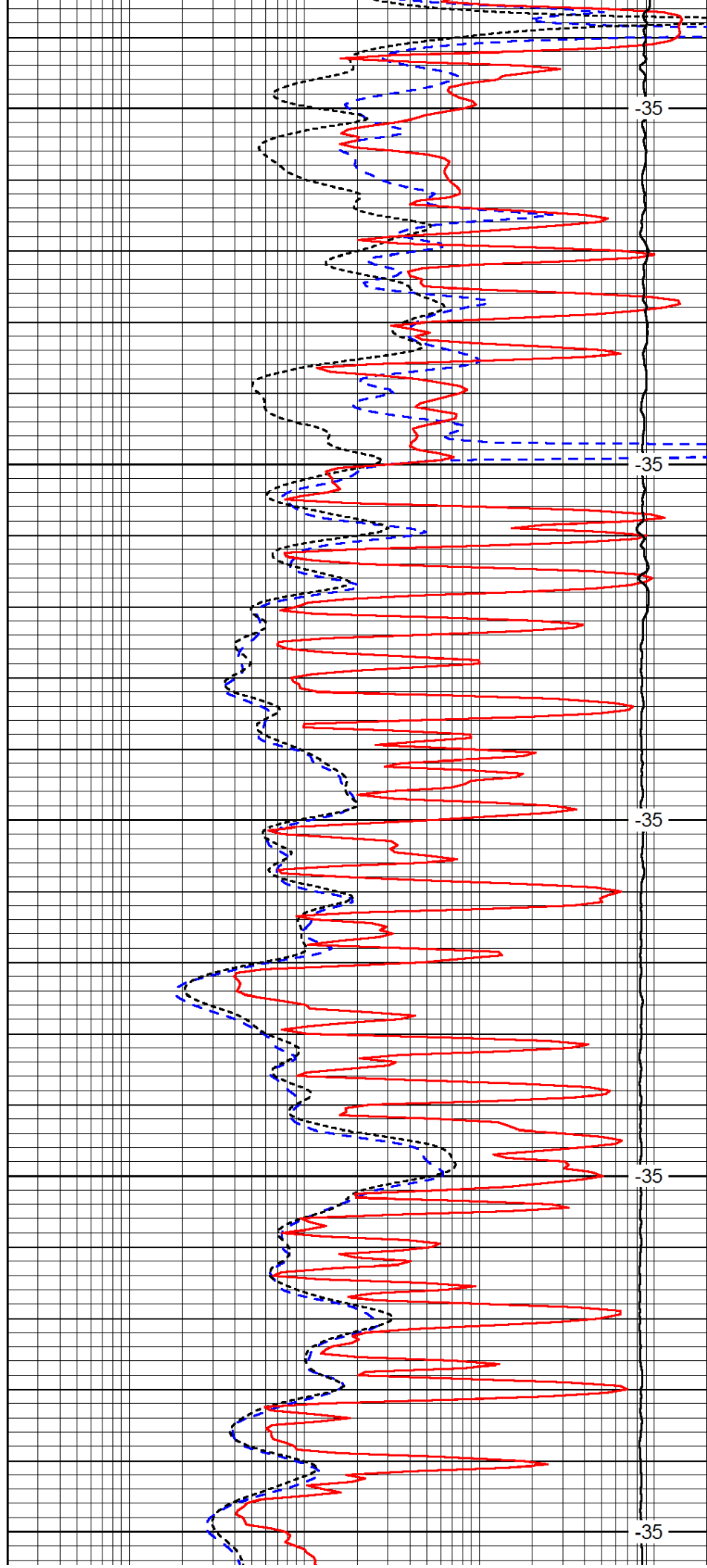
1750

1800

1850

1900

1950



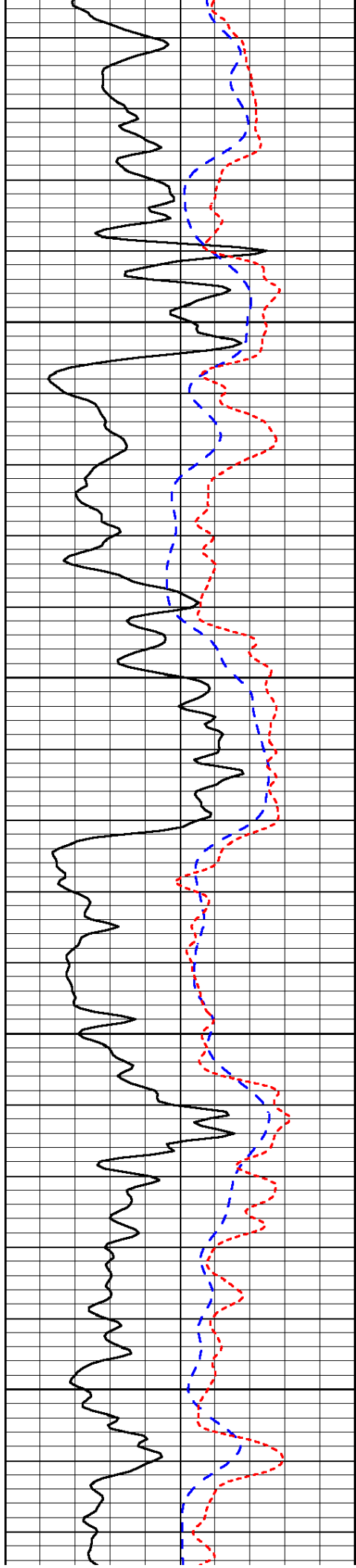
-35

-35

-35

-35

-35

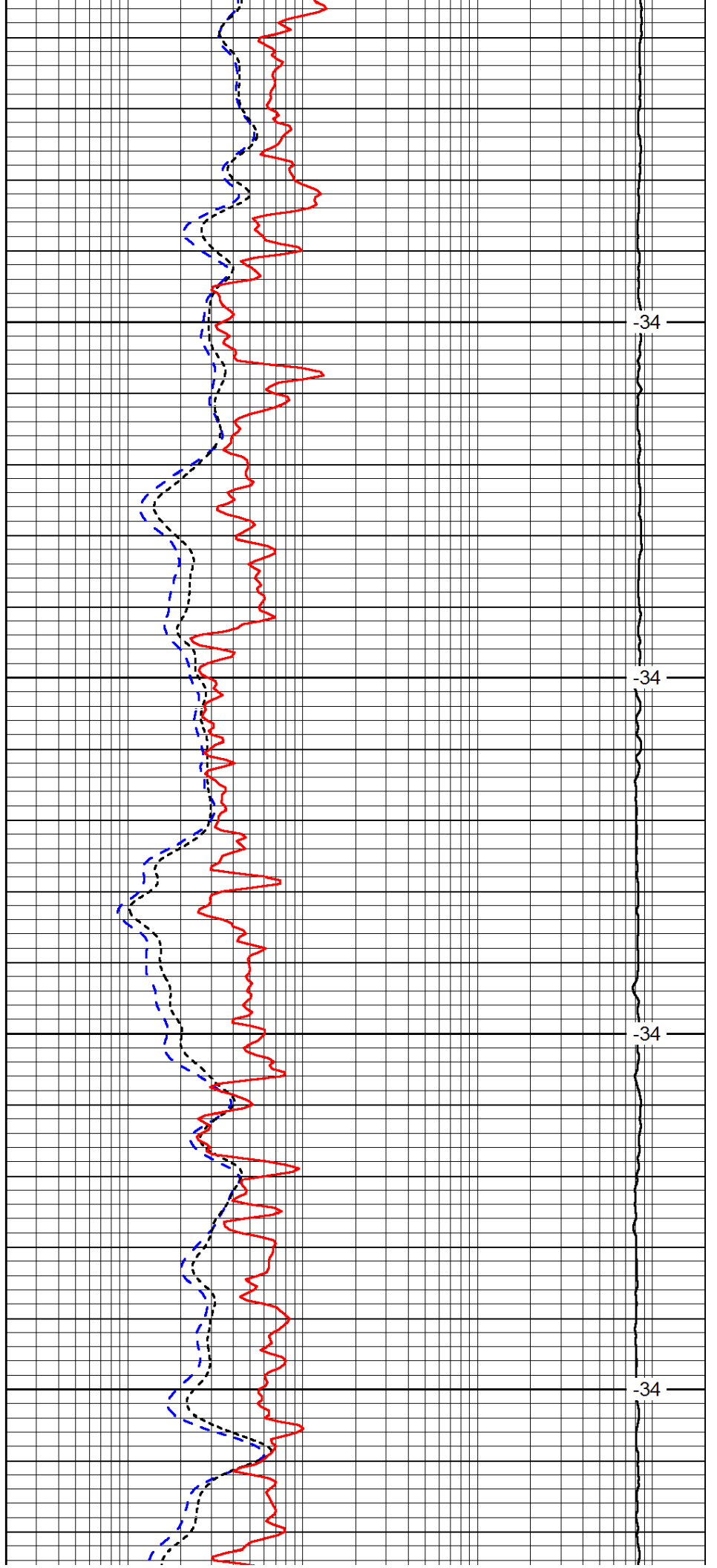


2000

2050

2100

2150

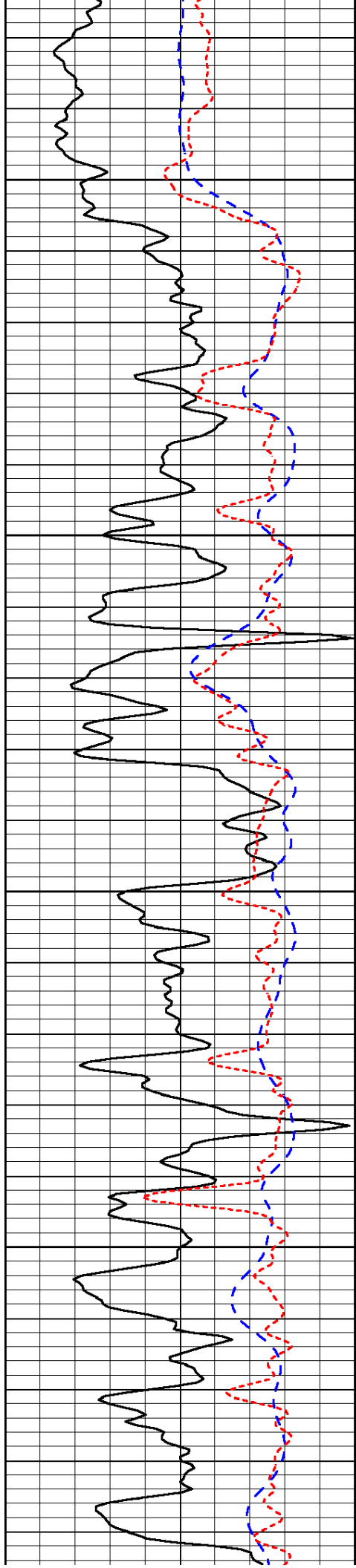


-34

-34

-34

-34

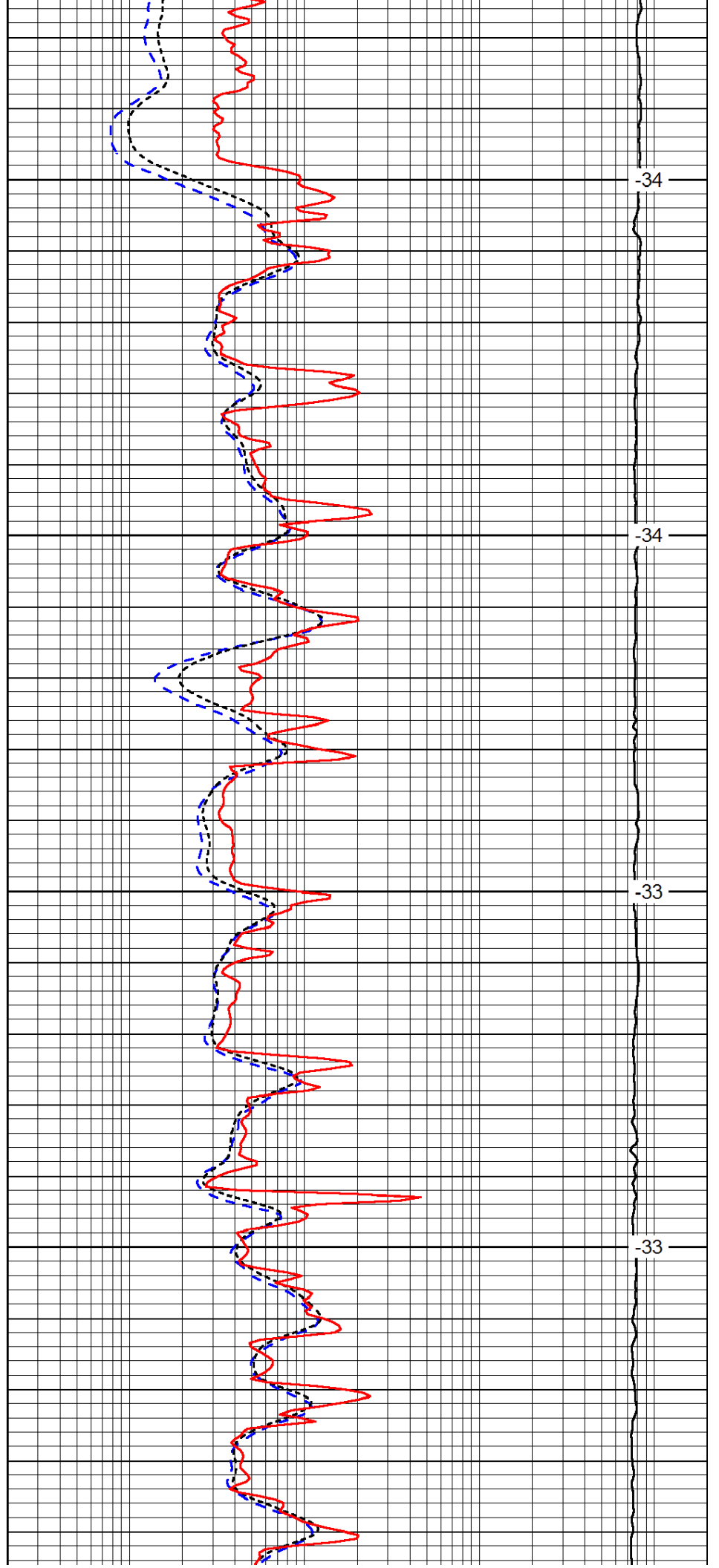


2200

2250

2300

2350

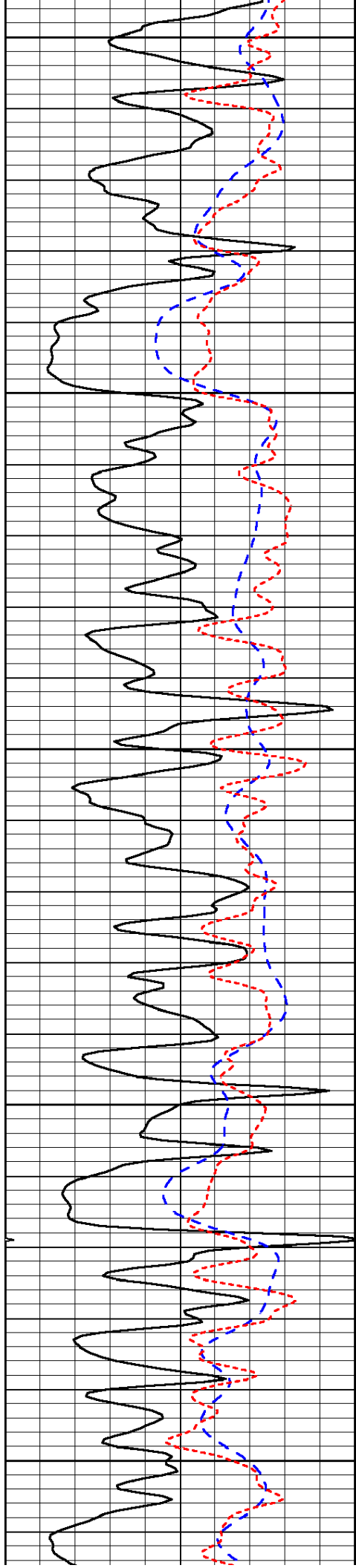


-34

-34

-33

-33



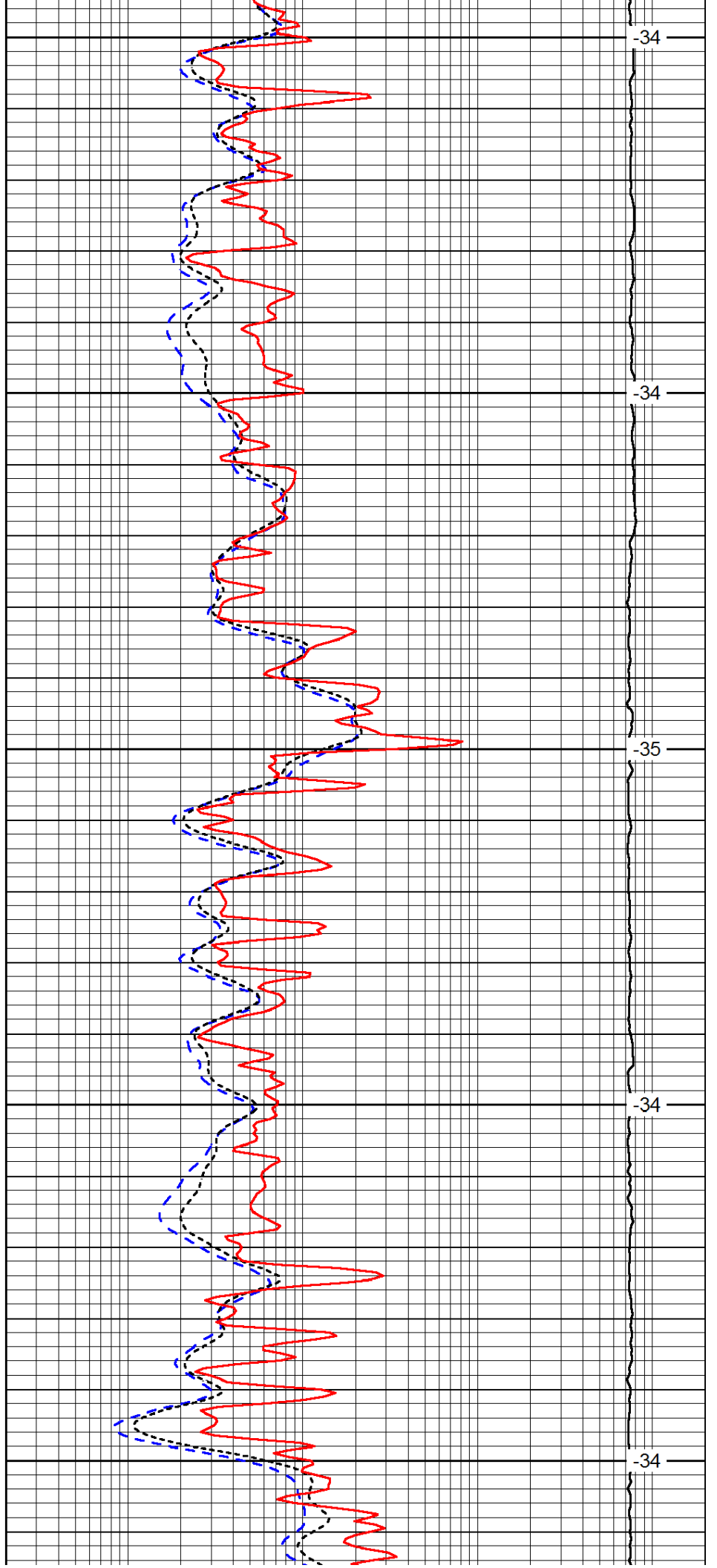
2400

2450

2500

2550

2600



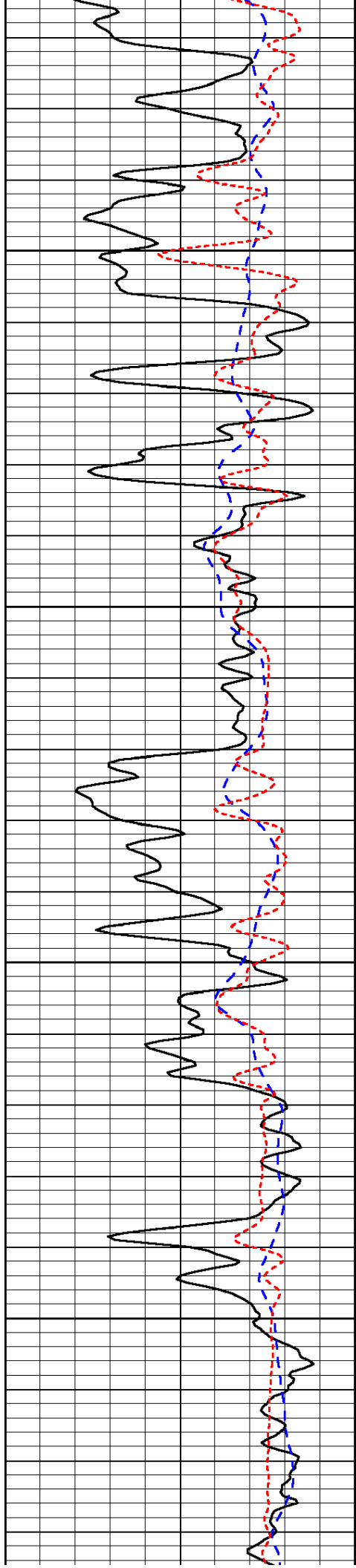
-34

-34

-35

-34

-34

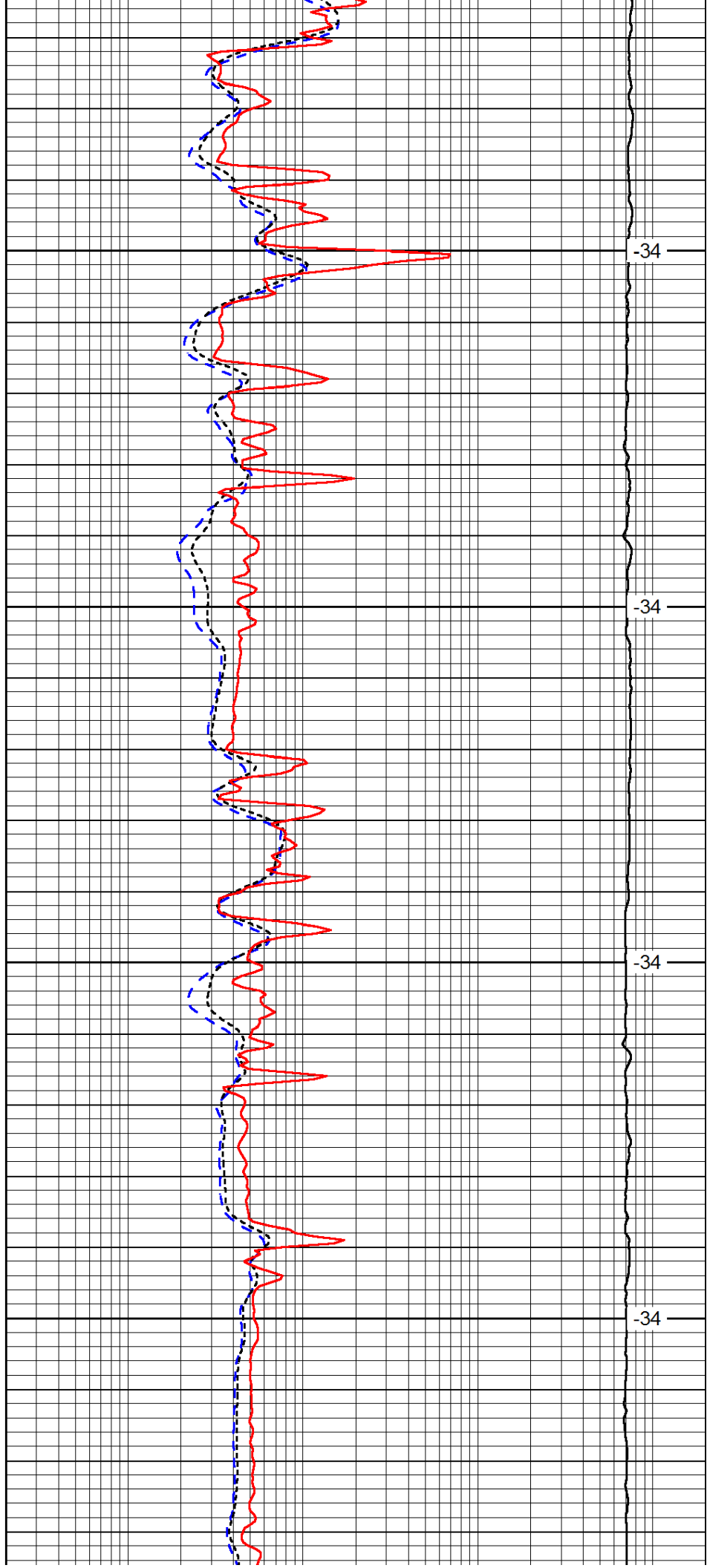


2650

2700

2750

2800

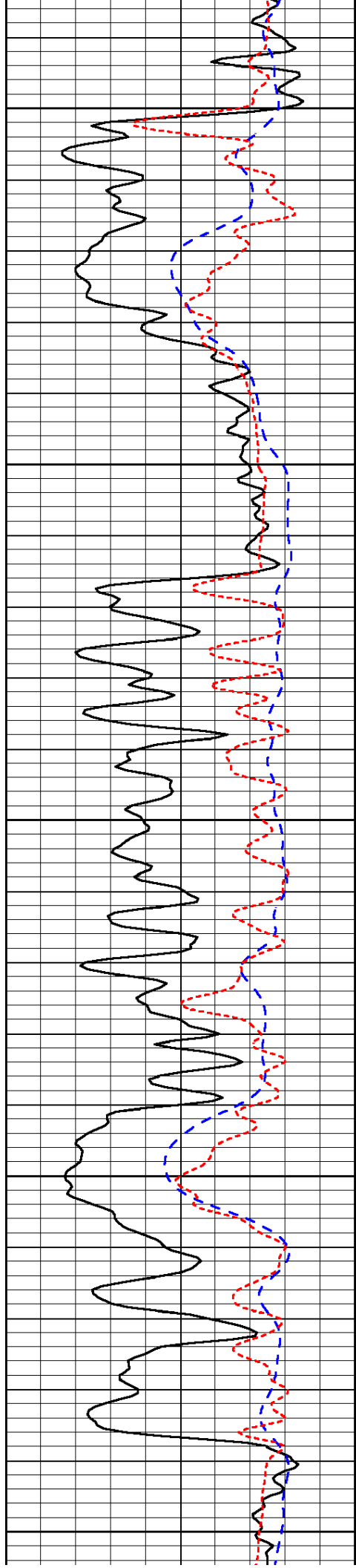


-34

-34

-34

-34



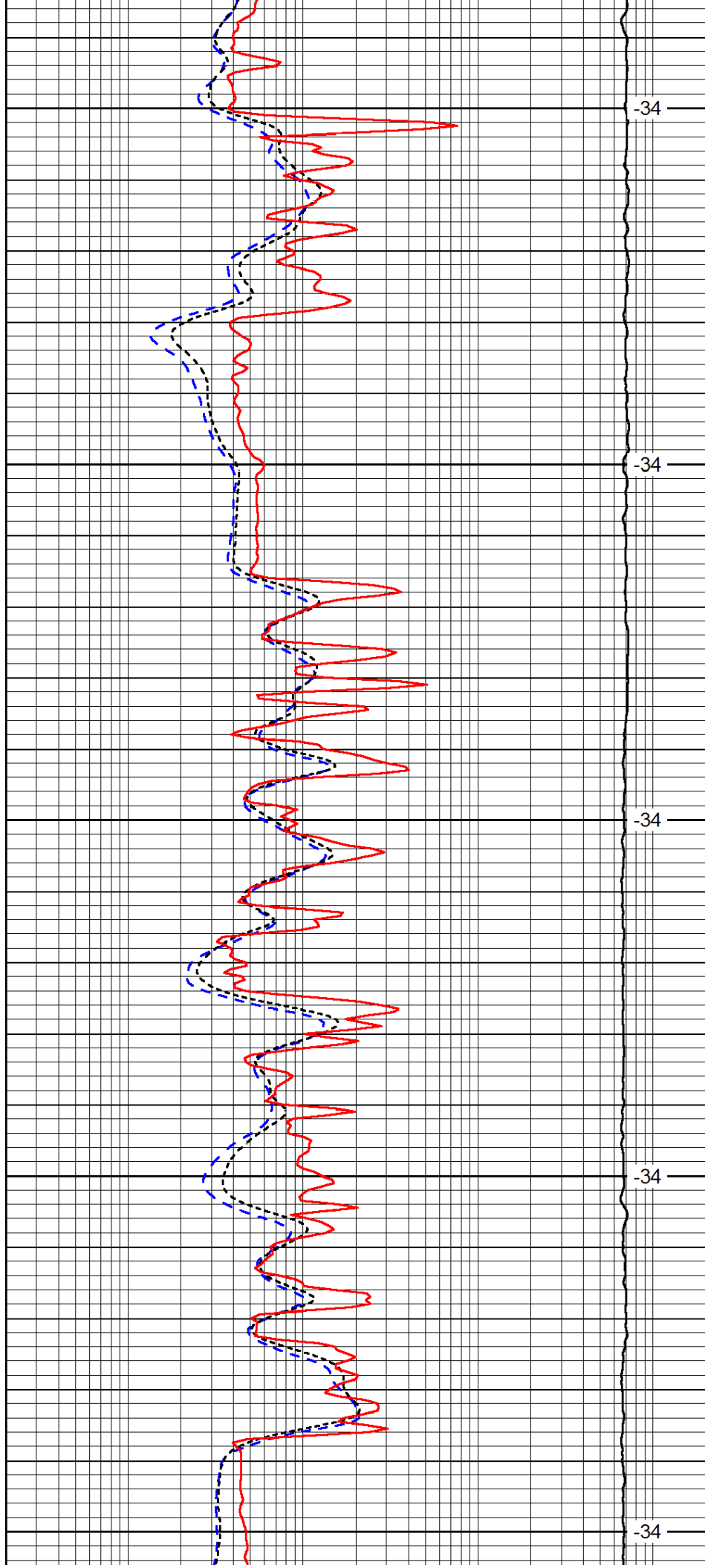
2850

2900

2950

3000

3050



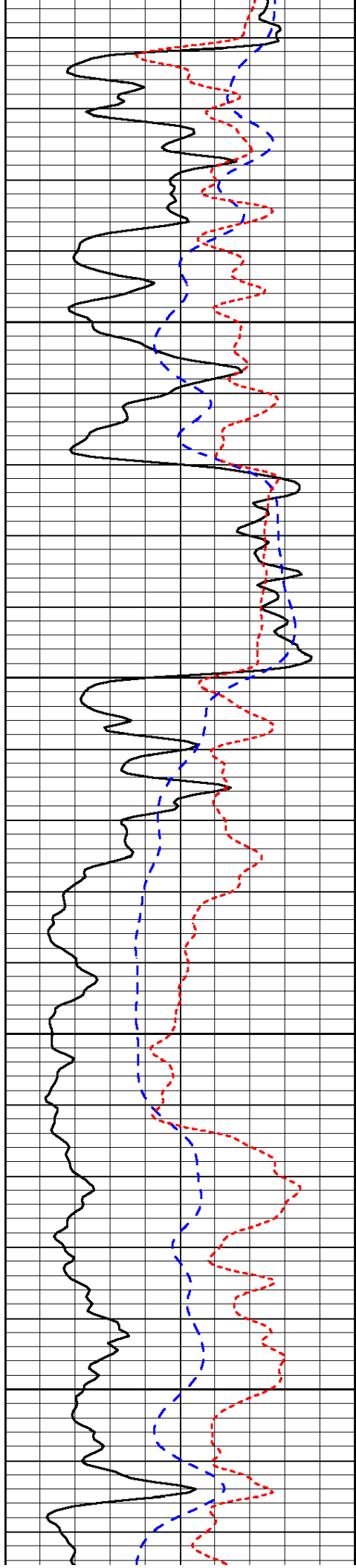
-34

-34

-34

-34

-34

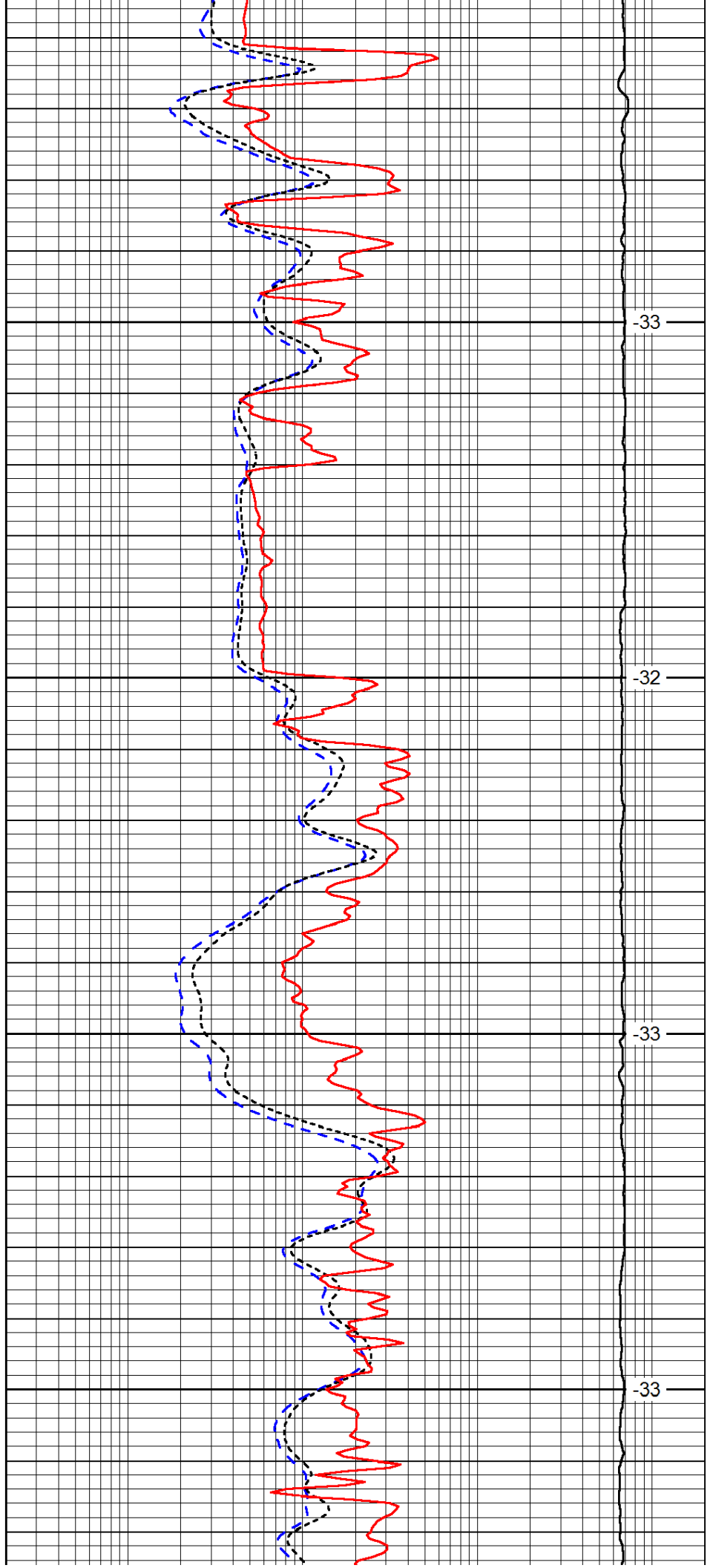


3100

3150

3200

3250

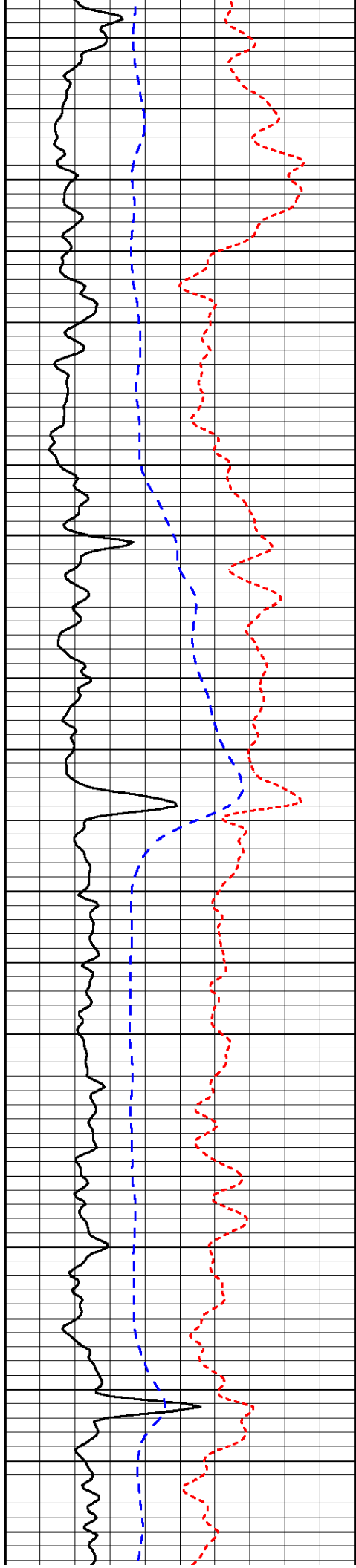


-33

-32

-33

-33

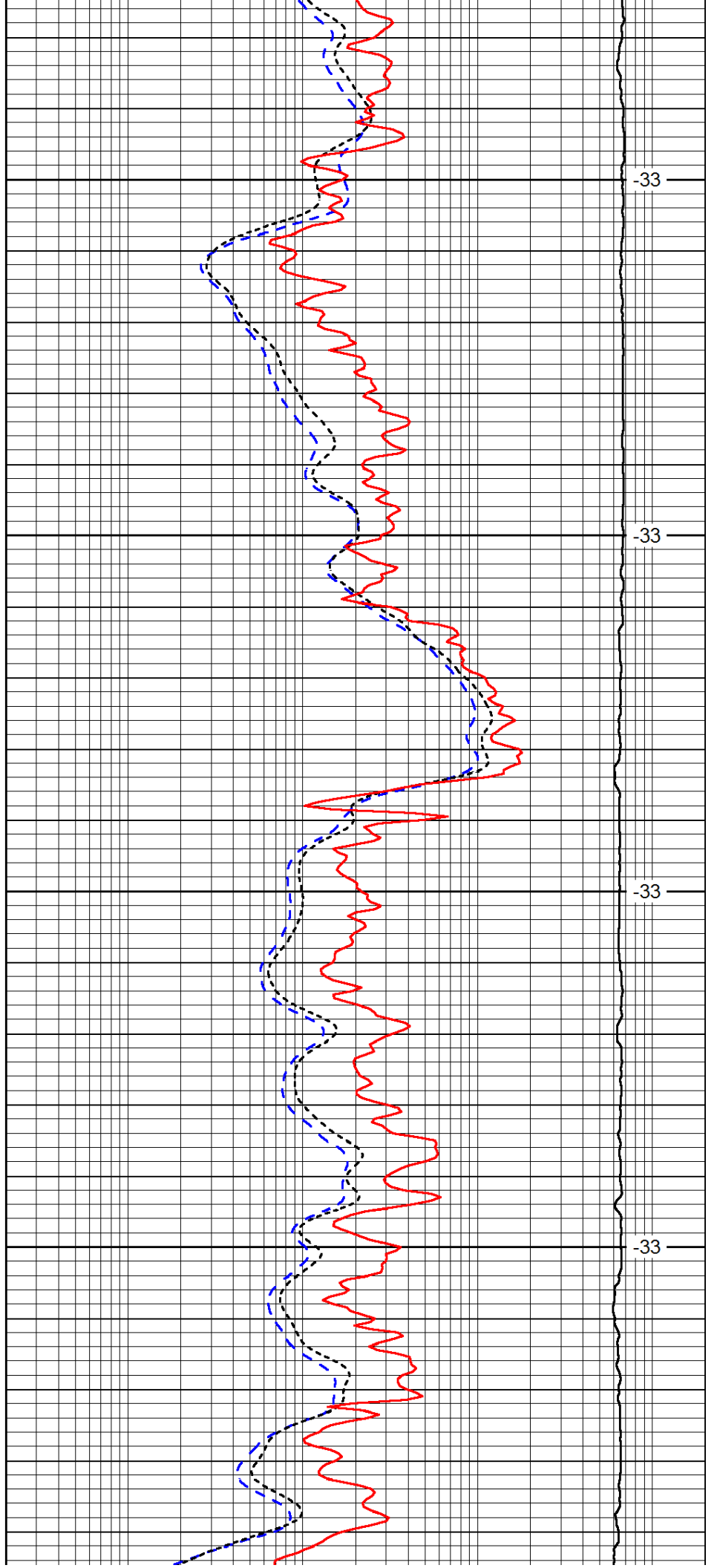


3300

3350

3400

3450

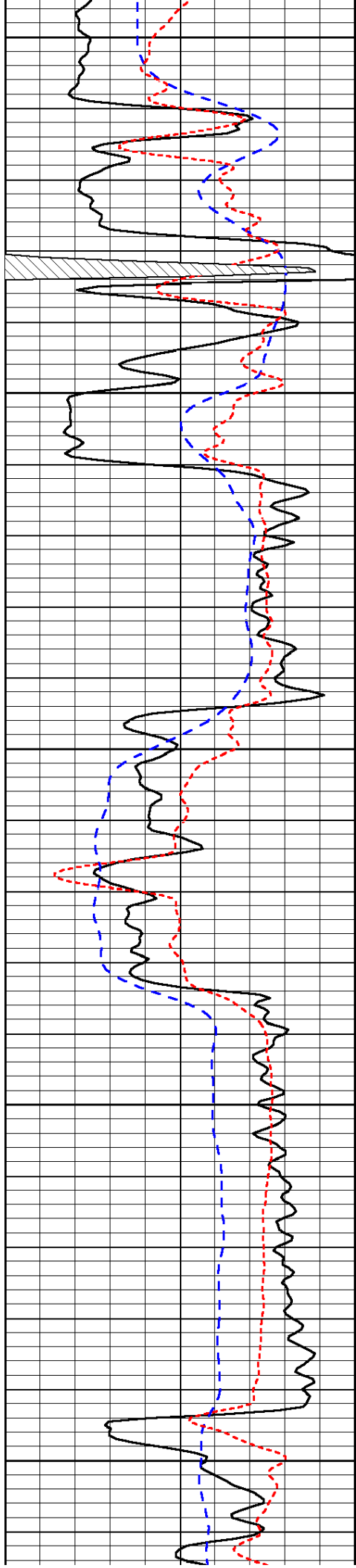


-33

-33

-33

-33



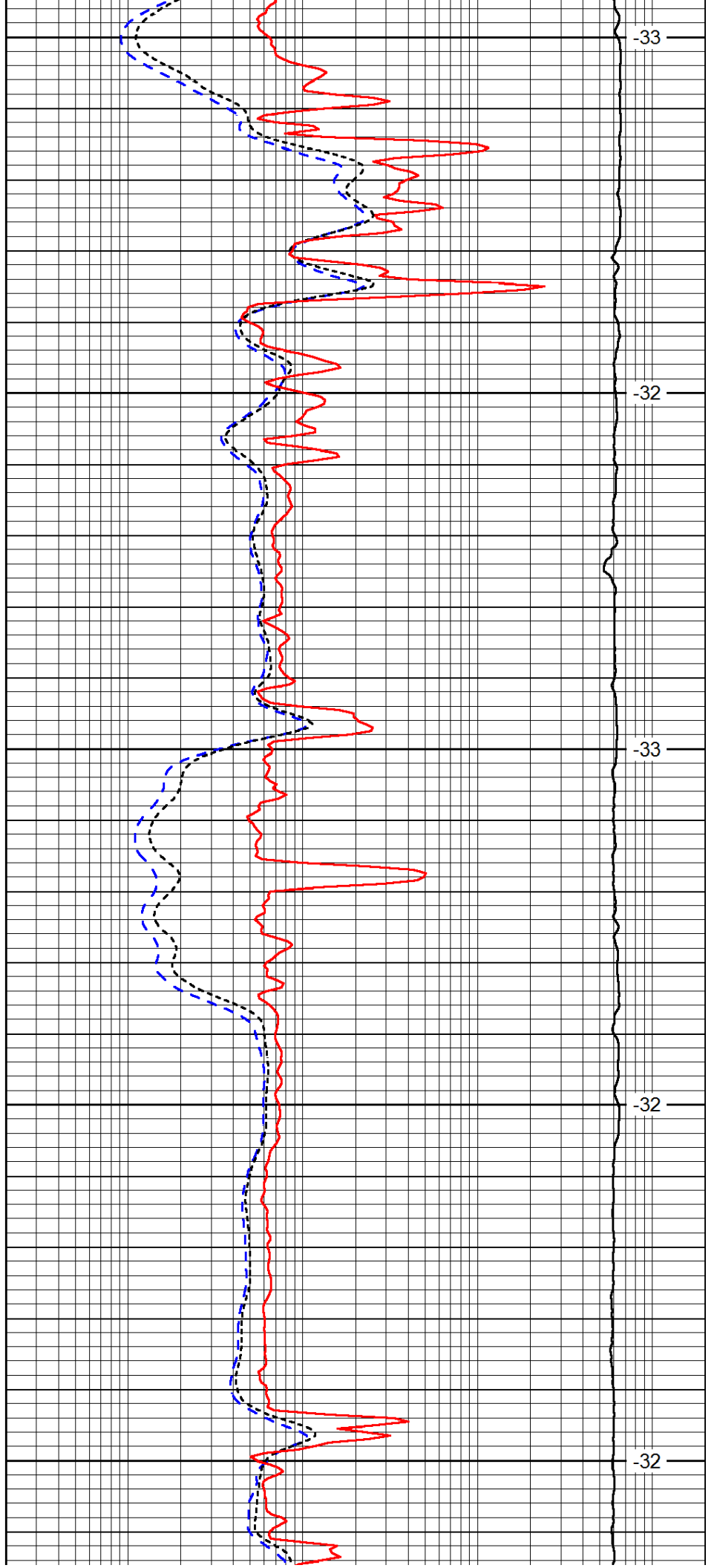
3500

3550

3600

3650

3700



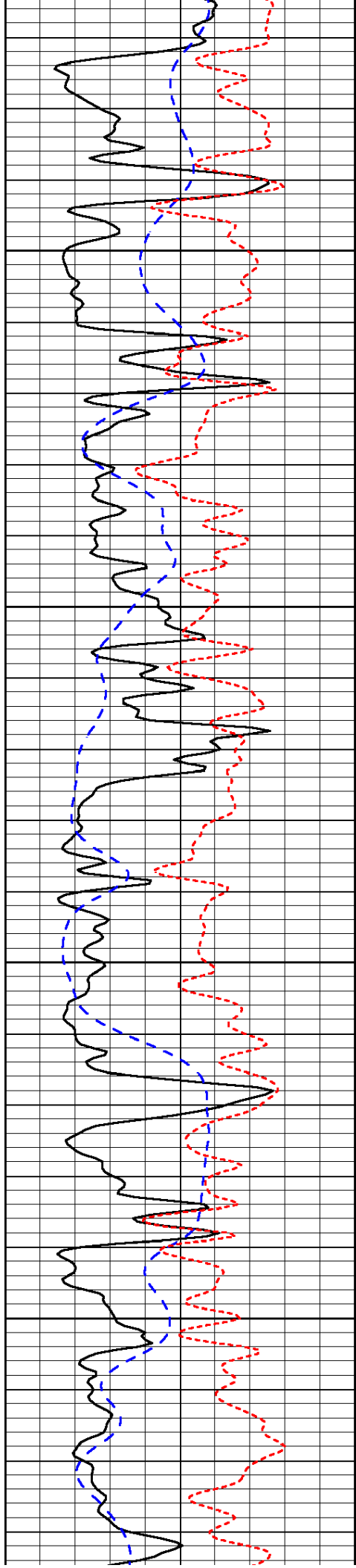
-33

-32

-33

-32

-32

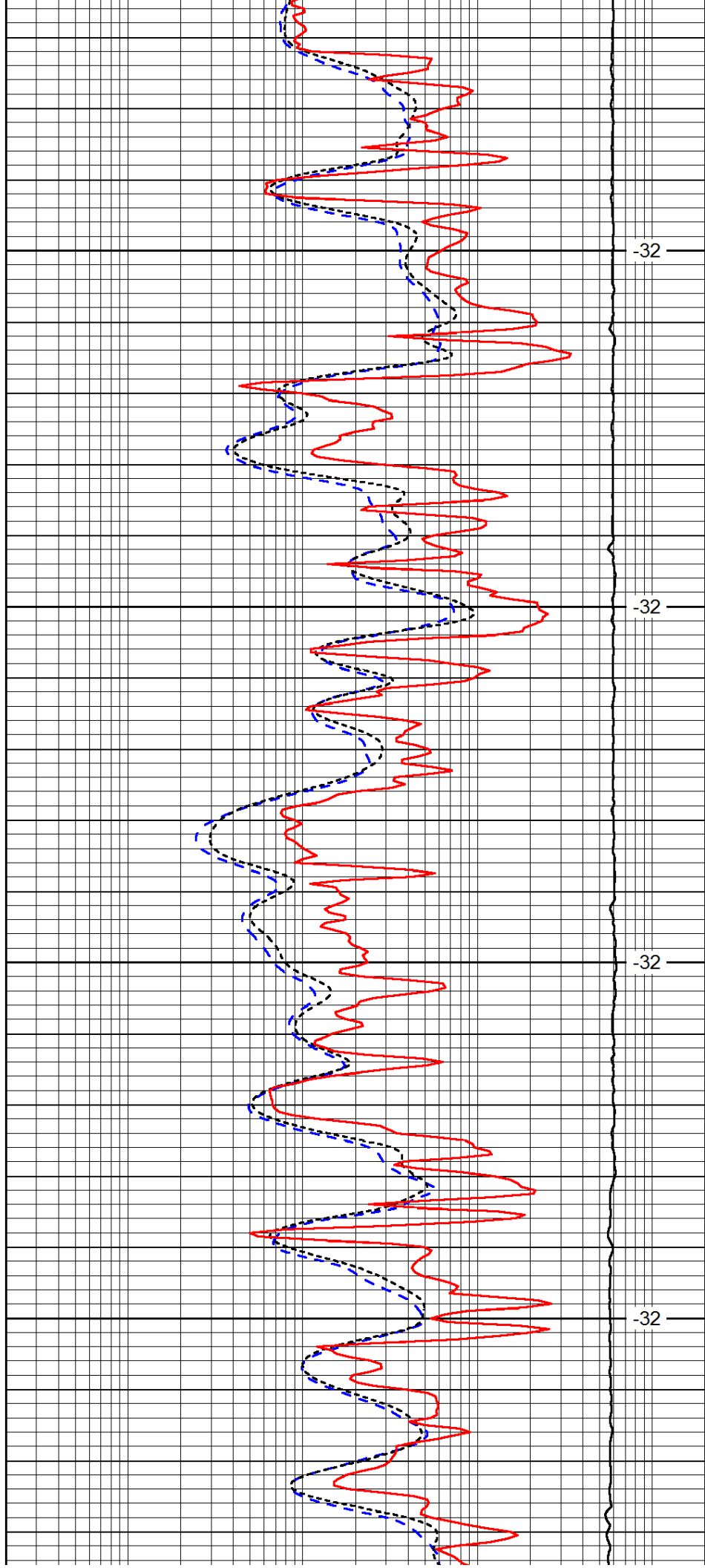


3750

3800

3850

3900

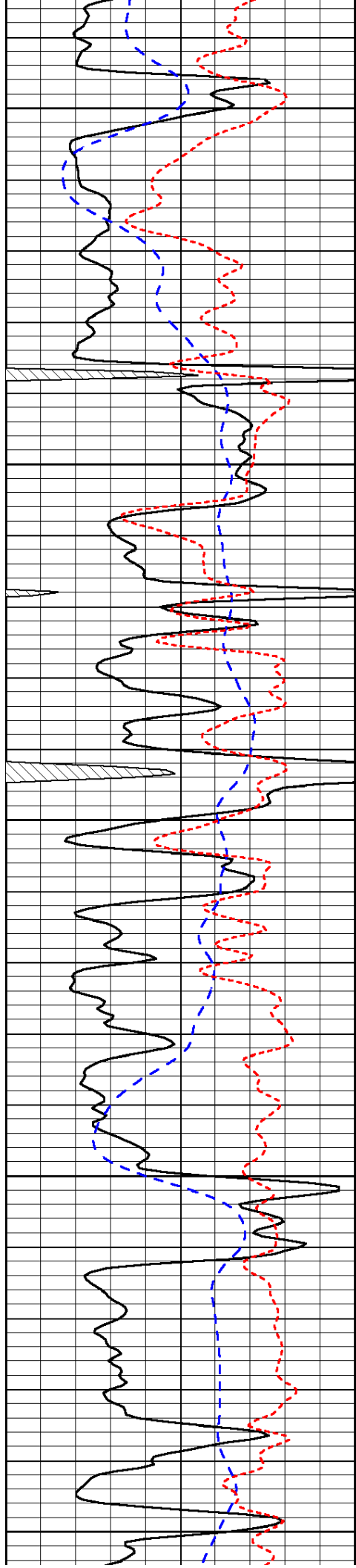


-32

-32

-32

-32



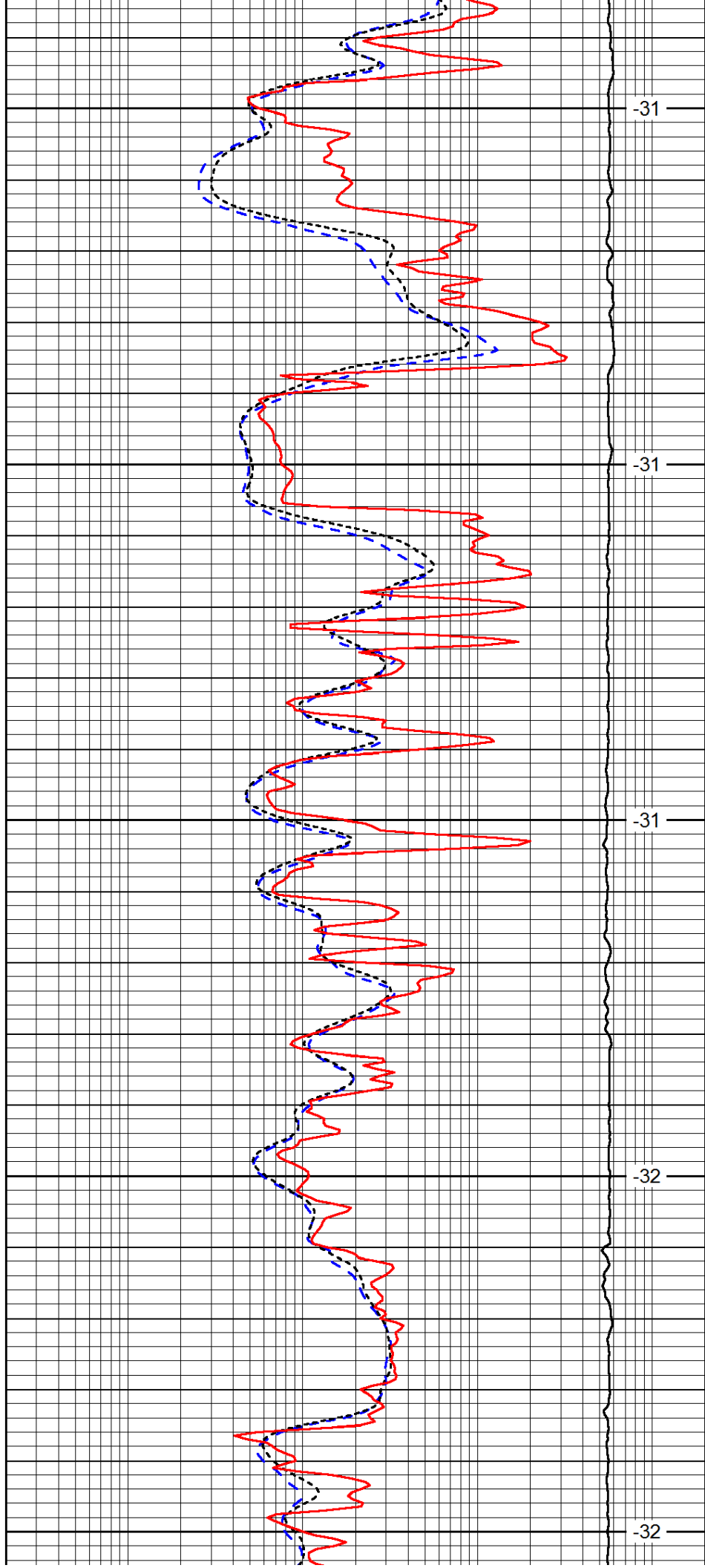
3950

4000

4050

4100

4150



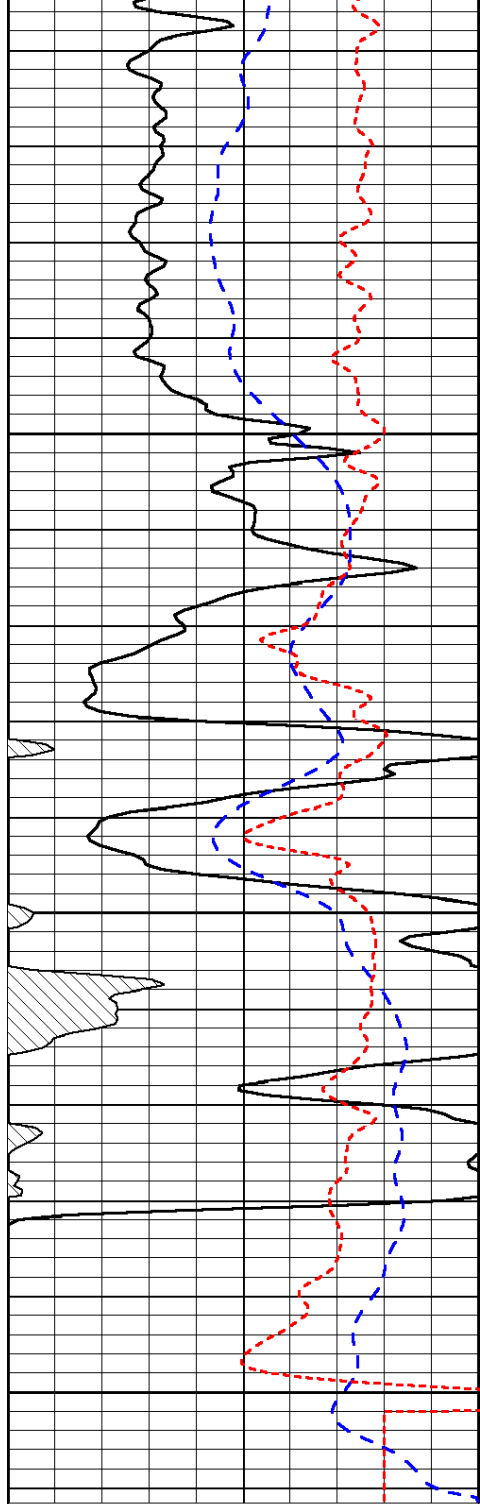
-31

-31

-31

-32

-32

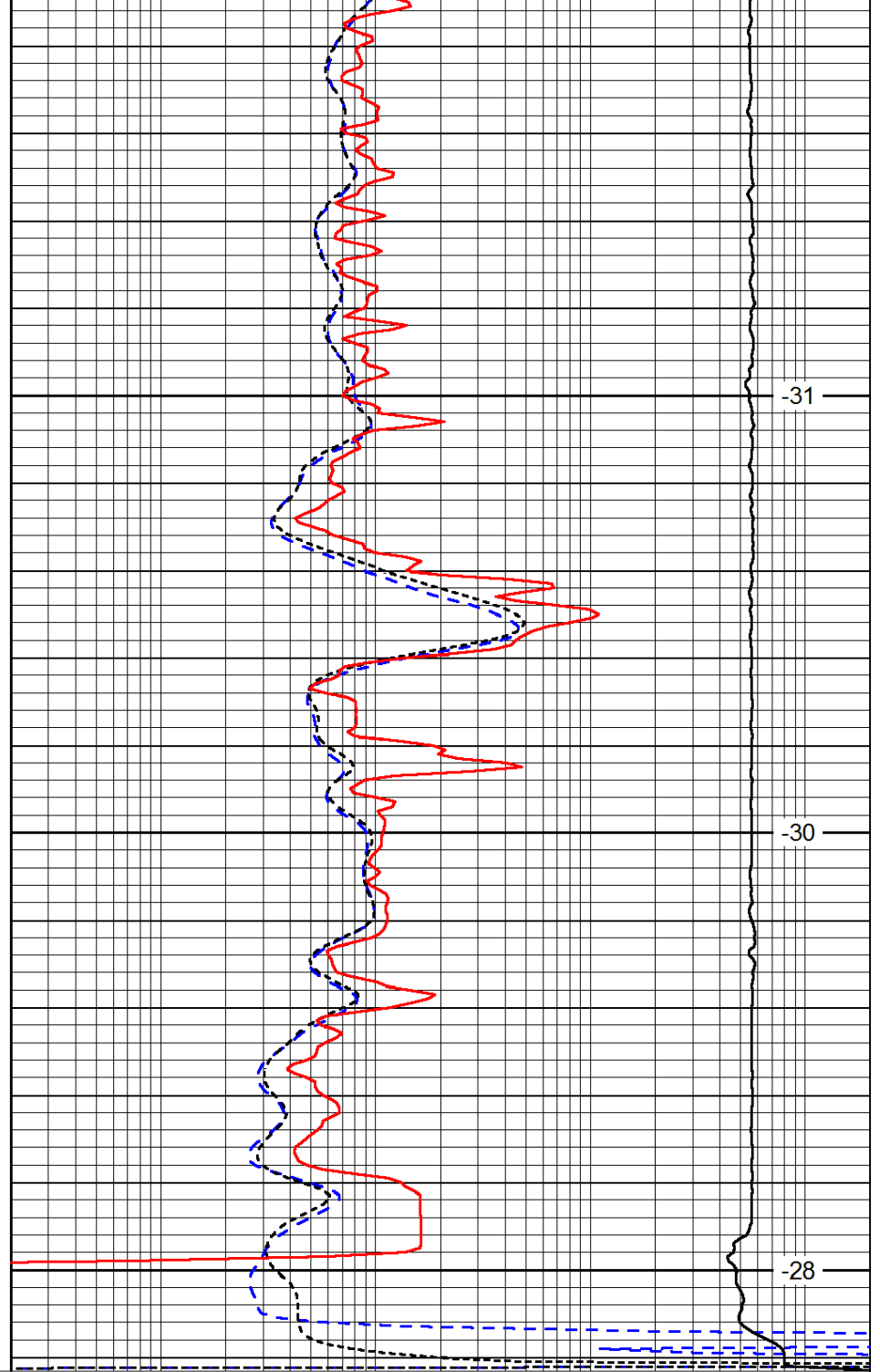


0	Gamma Ray	150
-200	SP (mV)	0
-160	Rxo / Rt	40

4200

4250

4300



-31

-30

-28

0.2	Deep Resistivity	2000
0.2	Medium Resistivity	2000
0.2	Shallow Resistivity	2000
15000	Line Tension	0

LSPD