



DIGITAL LOG (785) 625-3858

Dual Compensated Porosity Log

15-015-23,938-00-00

API No. 15-015-23,938-00-00

Company Vess Oil Corporation
 Well J.W. Smith "A" No. 47
 Field Augusta
 County Butler State Kansas

Location 2,050 FNL & 1,500' FWL

Sec: 20 Twp: 28S Rge: 4E

Other Services
 DIL
 MEL

Permanent Datum Ground Level Elevation 1265
 Log Measured From Kelly Bushing 6 Ft. Above Perm. Datum
 Drilling Measured From Kelly Bushing

Elevation
 K.B. 1271
 D.F.
 G.L. 1265

Date	5/5/2012	
Run Number	Two	
Type Log	CNL / CDL	
Depth Driller	2465	
Depth Logger	2464	
Bottom Logged Interval	2462	
Top Logged Interval	1300	
Type Fluid In Hole	Chemical	
Salinity, PPM CL	1500	
Density	9.2	
Level	Full	
Max. Rec. Temp. F	101	
Operating Rig Time	4 1/2 Hours	
Equipment -- Location	10 Hays	
Recorded By	J. Long	
Witnessed By	Roger Martin	

Borehole Record				Casing Record			
Run No.	Bit	From	To	Size	Wgt.	From	To
1	12.25	00	261	8.625	24#	00	261
2	7.875	261	2465				

<<< Fold Here >>>

All interpretations are opinions based on inferences from electrical or other measurements and we cannot and do not guarantee the accuracy or correctness of any interpretation, and we shall not, except in the case of gross or willful negligence on our part, be liable or responsible for any loss, costs, damages, or expenses incurred or sustained by anyone resulting from any interpretation made by any of our officers, agents or employees. These interpretations are also subject to our general terms and conditions set out in our current Price Schedule.

Comments

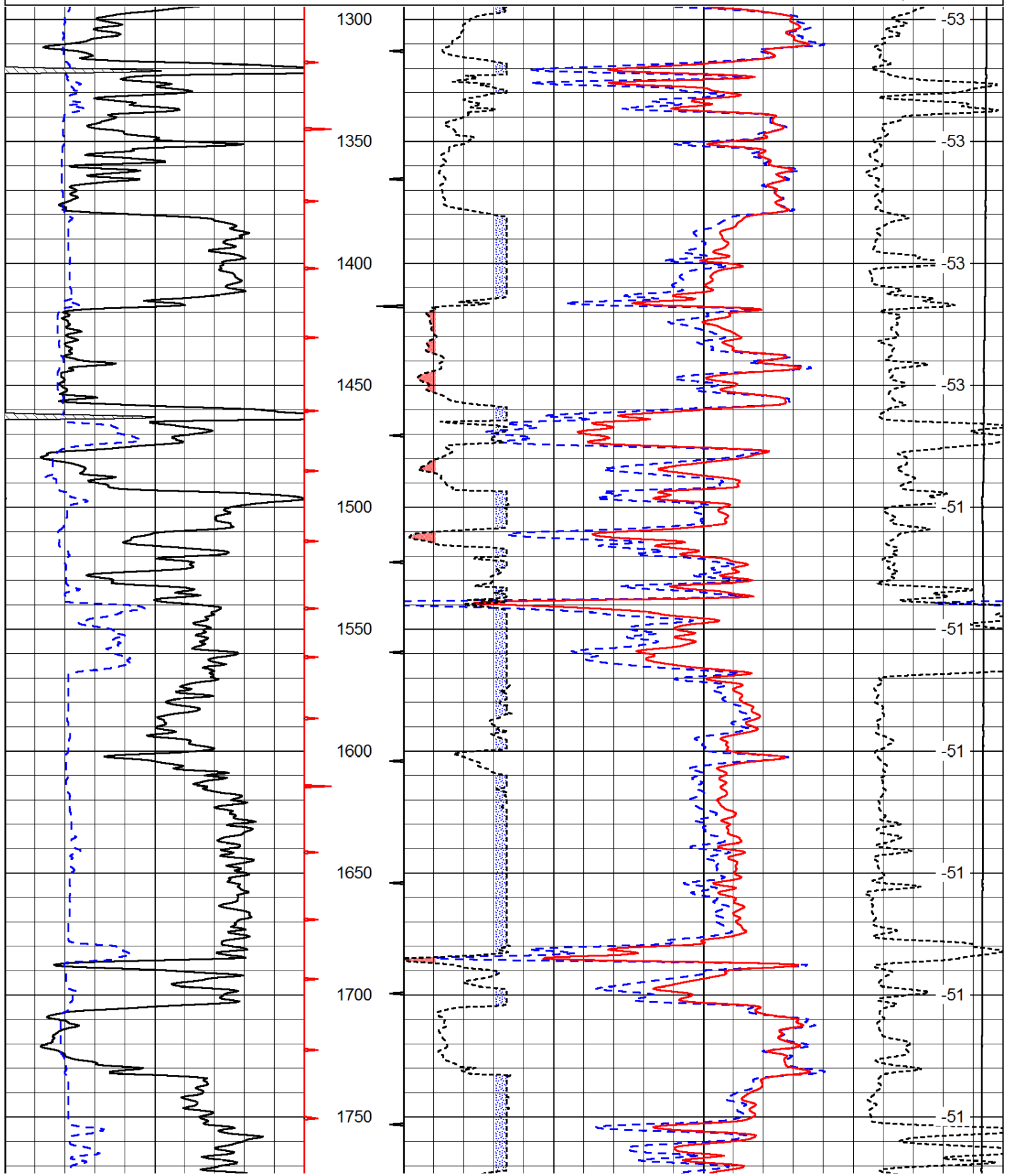
Thank you for using Log-Tech, Inc.
 (785) 625-3858

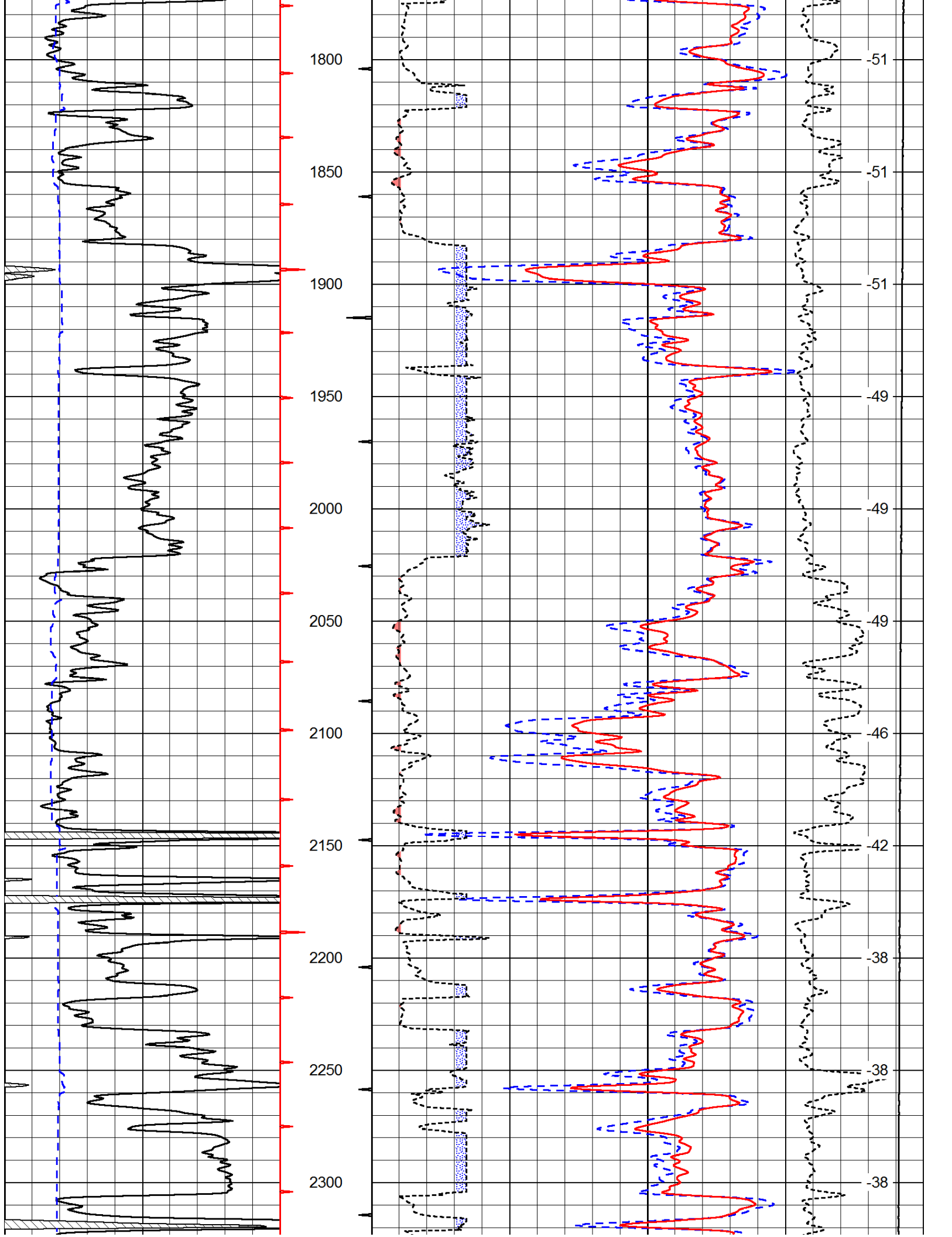
Andover, East on Highway 54/400 to Santa Fe Lake Road, 5 South to 150th Street, 1 East to curve, 1/4 further East to Diamond Road, 1/4 South to 153rd Street, 1 East, South Into through gate

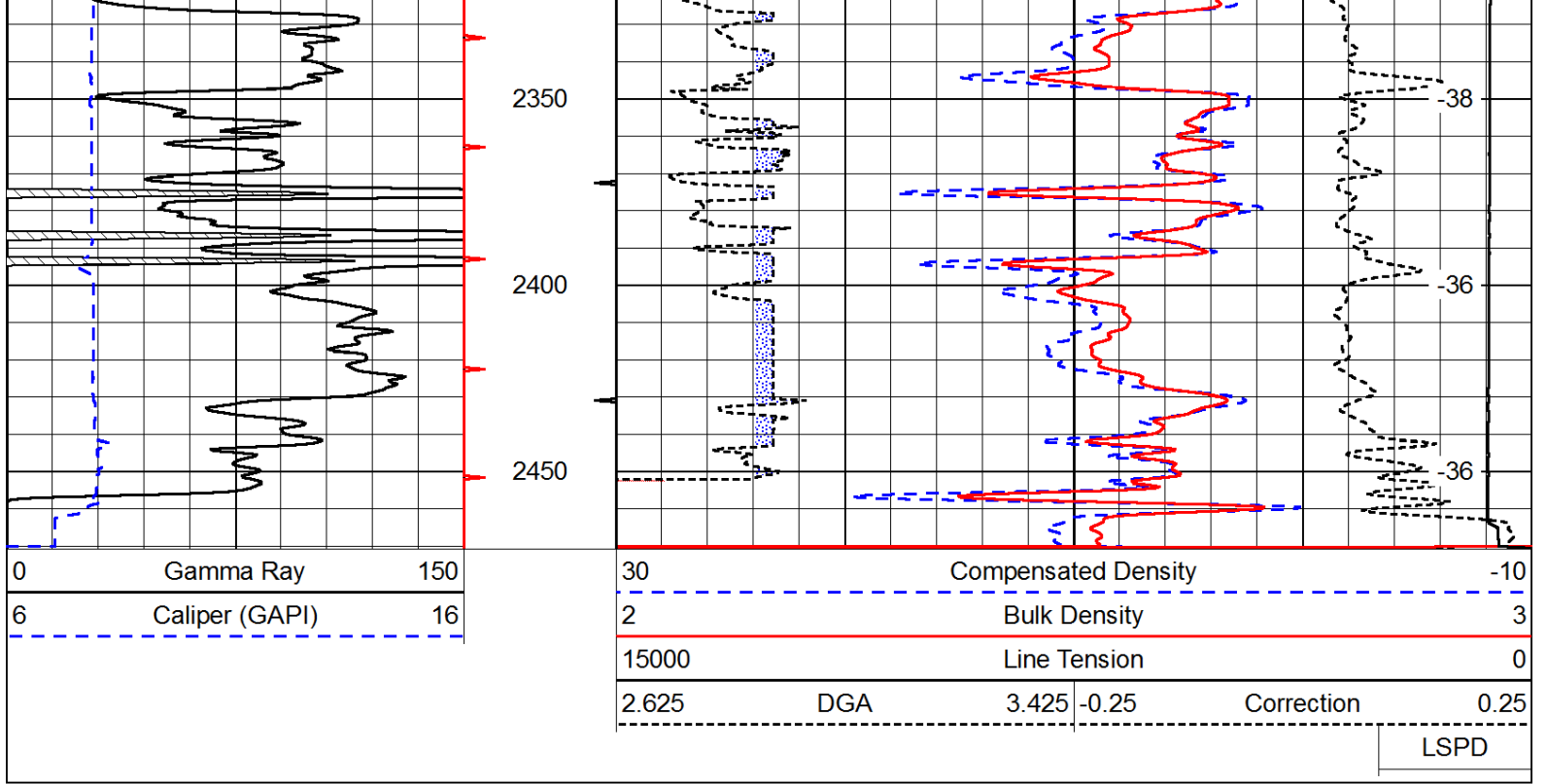
Database File: c:\warrior\data\vess_j.w. smith a no. 47\vess_jw_smith_47hd.db
 Dataset Pathname: dil/vessdil
 Presentation Format: cdl
 Dataset Creation: Sat May 05 21:01:19 2012
 Charted by: Depth in Feet scaled 1:600

0	Gamma Ray	150
6	Caliper (GAPI)	16

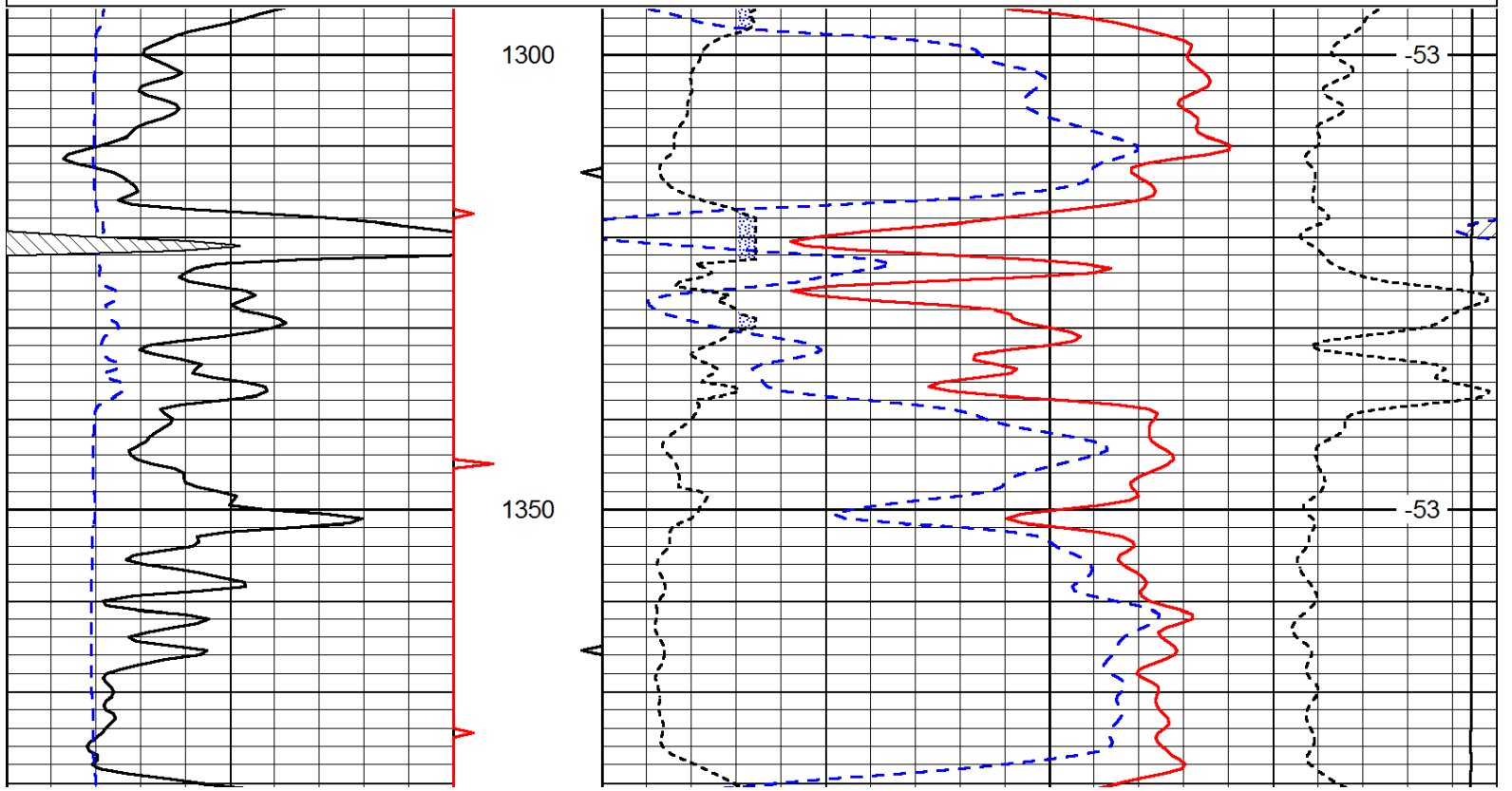
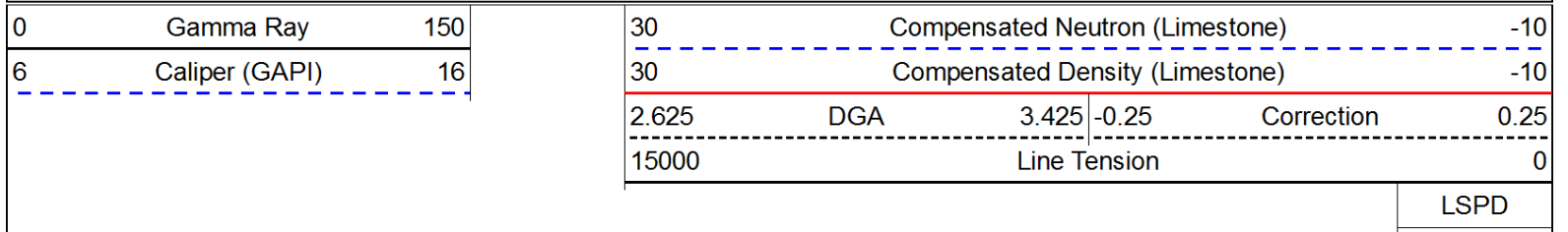
30	Compensated Density			-10	
2	Bulk Density			3	
15000	Line Tension			0	
2.625	DGA	3.425	-0.25	Correction	0.25
LSPD					

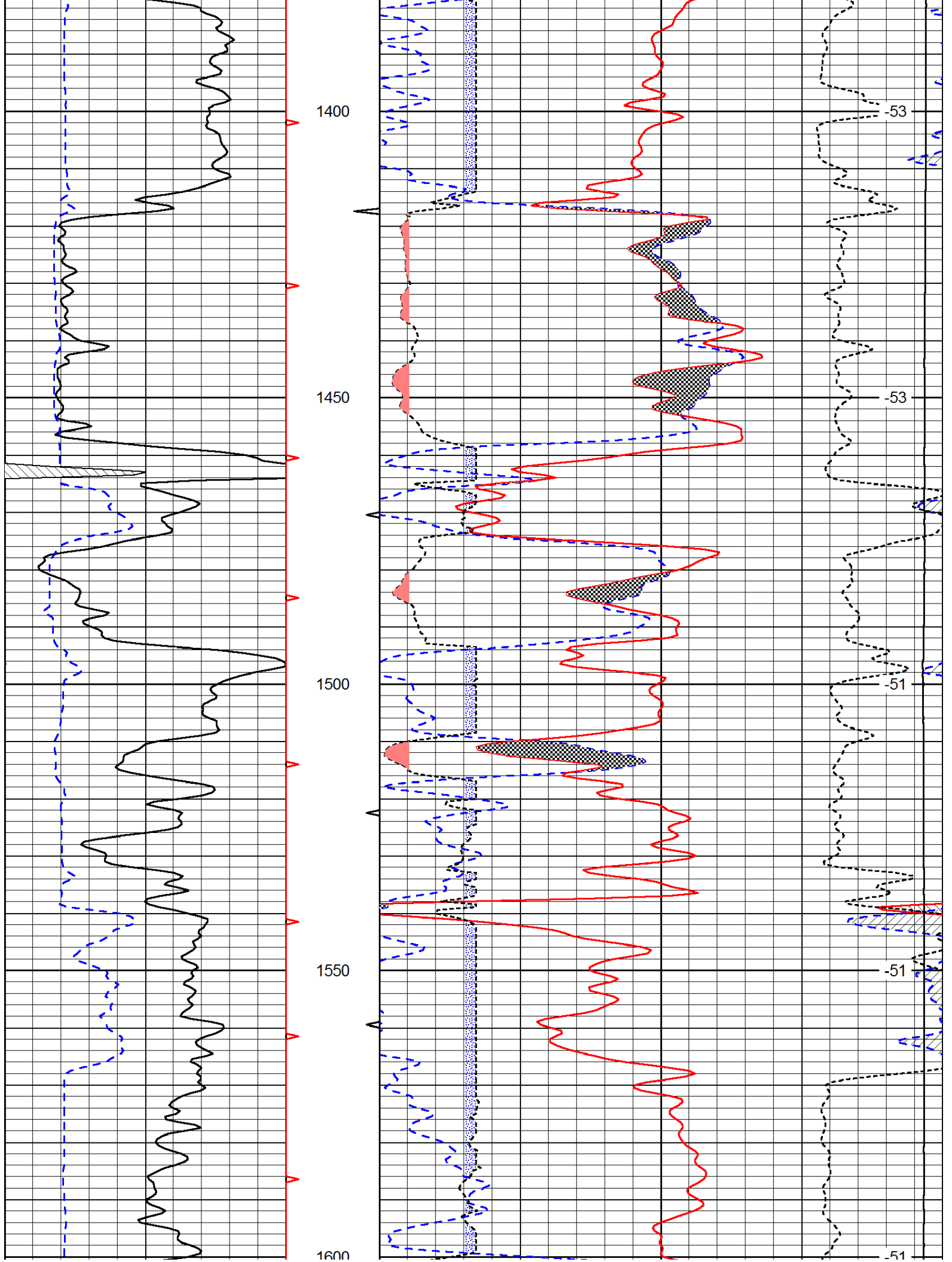


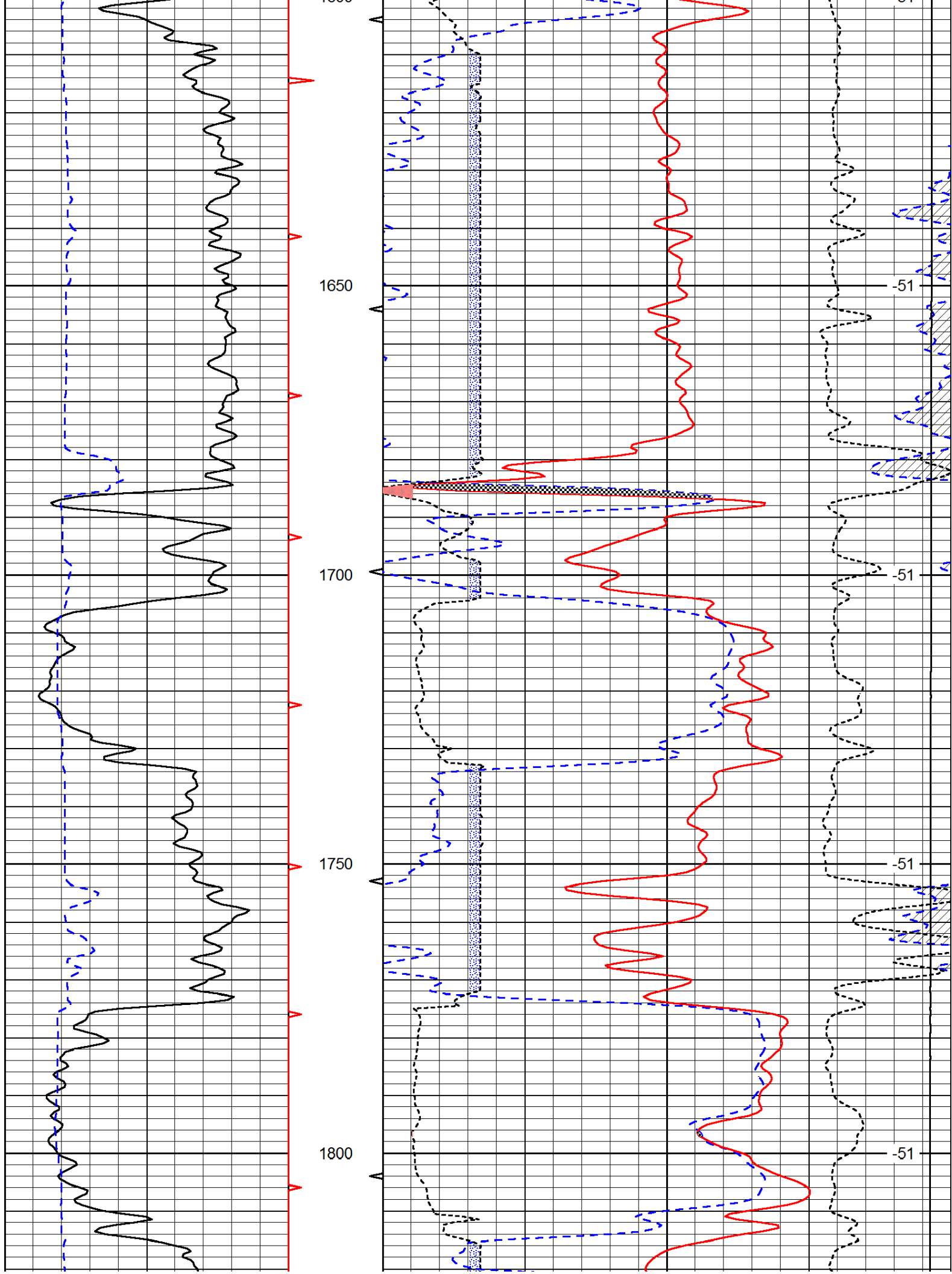


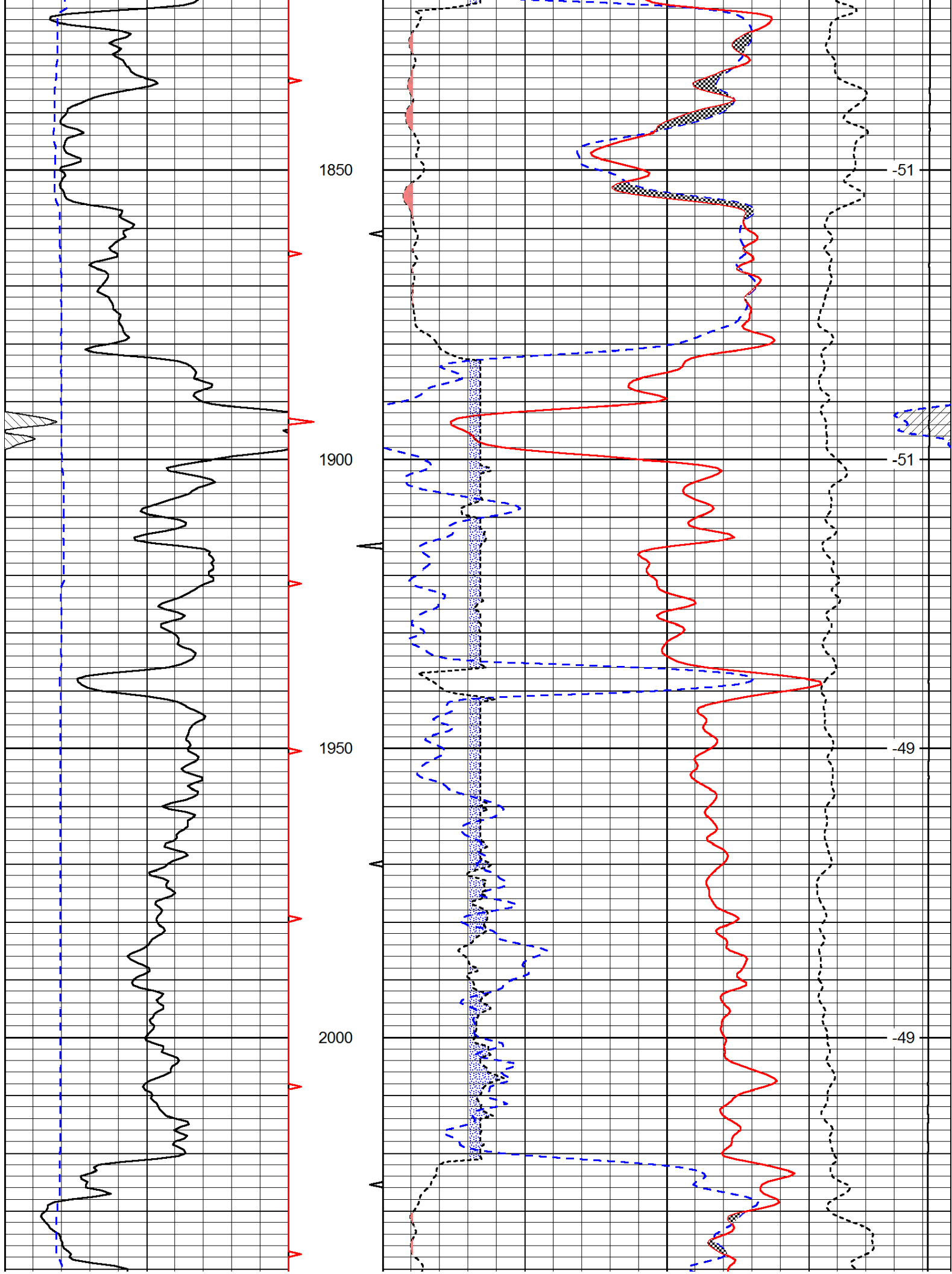


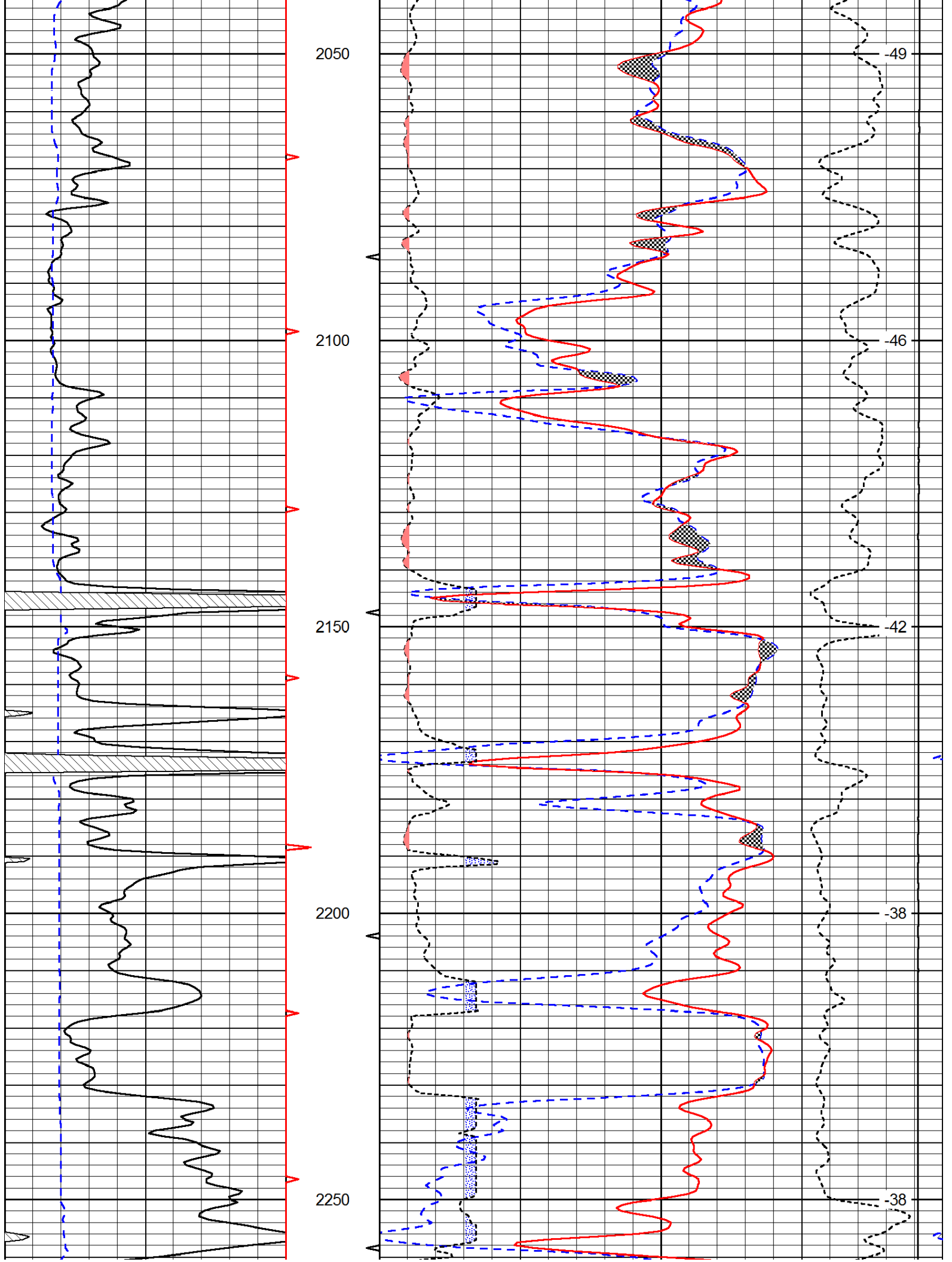
Database File: c:\warrior\data\vess_j.w. smith a no. 47\vess_jw_smith_47hd.db
 Dataset Pathname: dil/vessdil
 Presentation Format: cndlspec
 Dataset Creation: Sat May 05 21:01:19 2012
 Charted by: Depth in Feet scaled 1:240

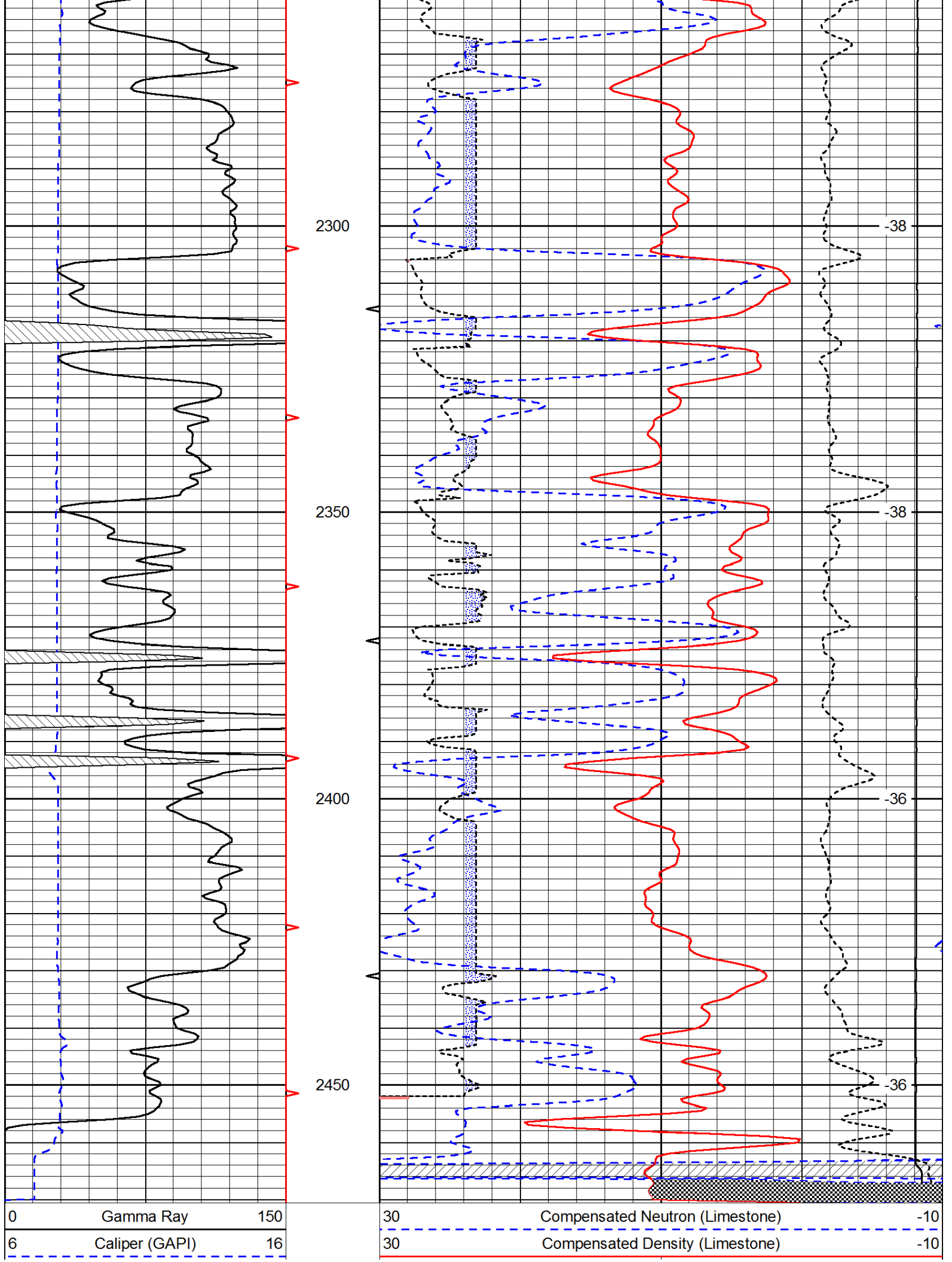












2.625	DGA	3.425	-0.25	Correction	0.25
15000		Line Tension			0
					LSPD