



DIGITAL LOG (785) 625-3858

Microresistivity Log

15-015-23,938-00-00

API No.

Company Vess Oil Corporation  
 Well J.W. Smith "A" No. 47  
 Field Augusta  
 County Butler State Kansas

Location 2,050 FNL & 1,500' FWL  
 Sec: 20 Twp: 28S Rge: 4E  
 Elevation 1265  
 6 Ft. Above Perm. Datum

Other Services  
 CNL/CDL  
 DIL  
 Elevation  
 K.B. 1271  
 D.F. 1265  
 G.L. 1265

Date	5/5/2012
Run Number	Three
Depth Driller	2465
Depth Logger	2464
Bottom Logged Interval	2463
Top Log Interval	1300
Casing Driller	8.625 @ 261
Casing Logger	260
Bit Size	7.875
Type Fluid in Hole	Chemical
Salinity,ppm CL	1500
Density / Viscosity	9.2   55
pH / Fluid Loss	9.0   8.6
Source of Sample	Flowline
Rm @ Meas. Temp	1.28 @ 74
Rmf @ Meas. Temp	.96 @ 74
Rmc @ Meas. Temp	1.73 @ 74
Source of Rmf / Rmc	Charts
Rm @ BHT	.94 @ 101
Operating Rig Time	4 1/2 Hours
Max Rec. Temp. F	101
Equipment Number	10
Location	Hays
Recorded By	J. Long
Witnessed By	Roger Martin

<<< Fold Here >>>

All interpretations are opinions based on inferences from electrical or other measurements and we cannot and do not guarantee the accuracy or correctness of any interpretation, and we shall not, except in the case of gross or willful negligence on our part, be liable or responsible for any loss, costs, damages, or expenses incurred or sustained by anyone resulting from any interpretation made by any of our officers, agents or employees. These interpretations are also subject to our general terms and conditions set out in our current Price Schedule.

Comments

Thank you for using Log-Tech, Inc.  
 (785) 625-3858

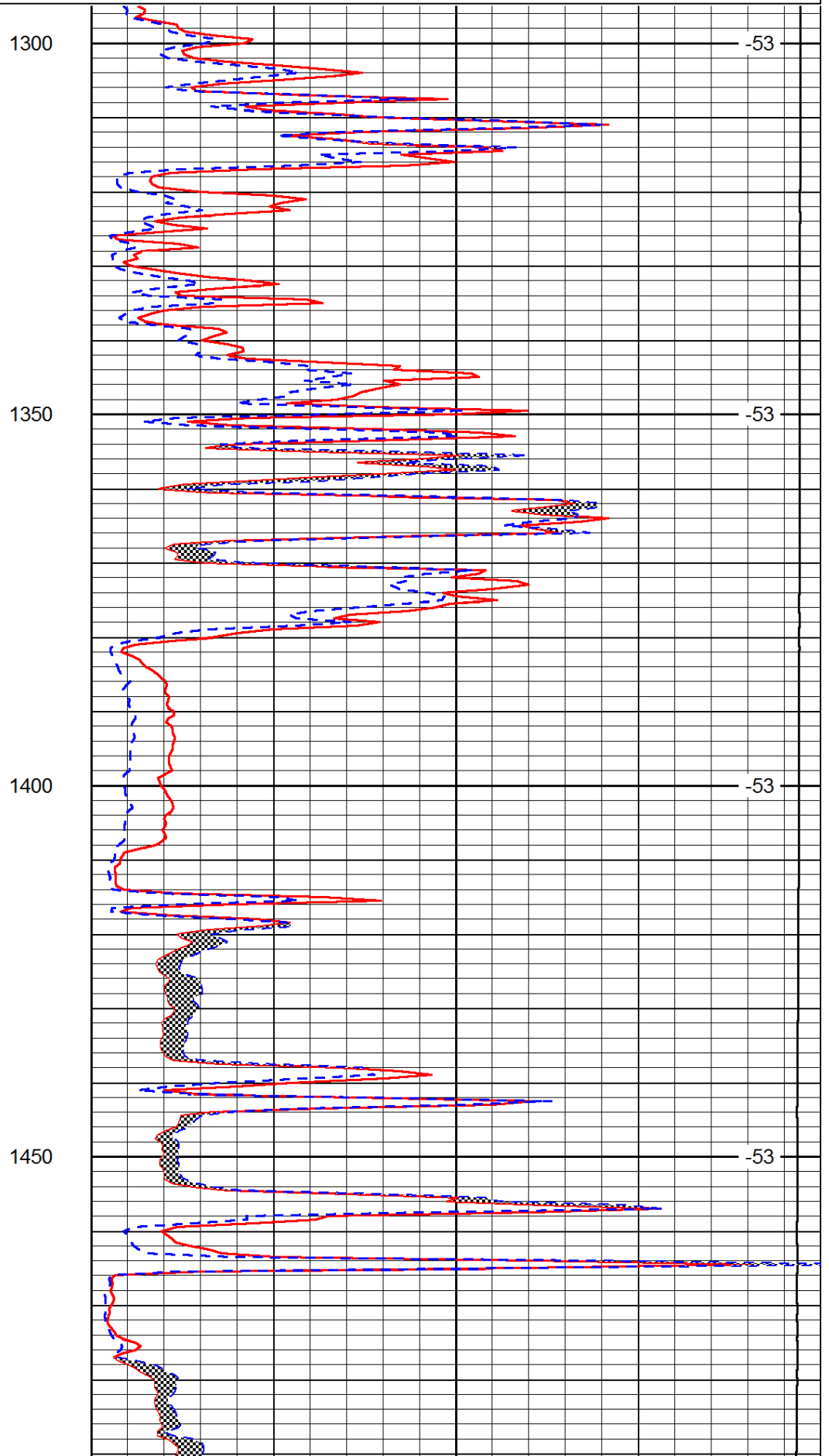
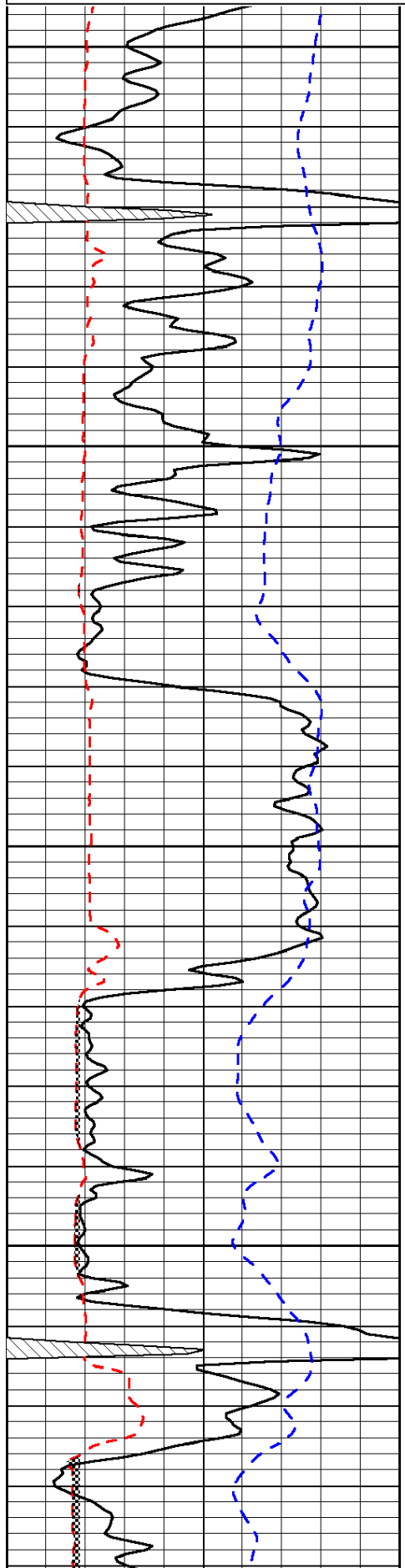
Andover, East on Highway 54/400 to Santa Fe Lake Road, 5 South to 150th Street, 1 East to curve, 1/4 further East to Diamond Road, 1/4 South to 153rd Street, 1 East, South Into through gate

Database File: c:\warrior\data\vess\_j.w. smith a no. 47\vess\_jw\_smith\_47hd.db  
 Dataset Pathname: dil/vessdil  
 Presentation Format: micro  
 Dataset Creation: Sat May 05 21:01:19 2012  
 Charted by: Depth in Feet scaled 1:240

0	Gamma Ray	150
6	Micro Log Caliper (GAPI)	16
-200	SP (mV)	0

0	Micro Inverse 1 X 1	40
0	Micro Normal 2"	40
15000	Line Weight	0

LSPD



1300

-53

1350

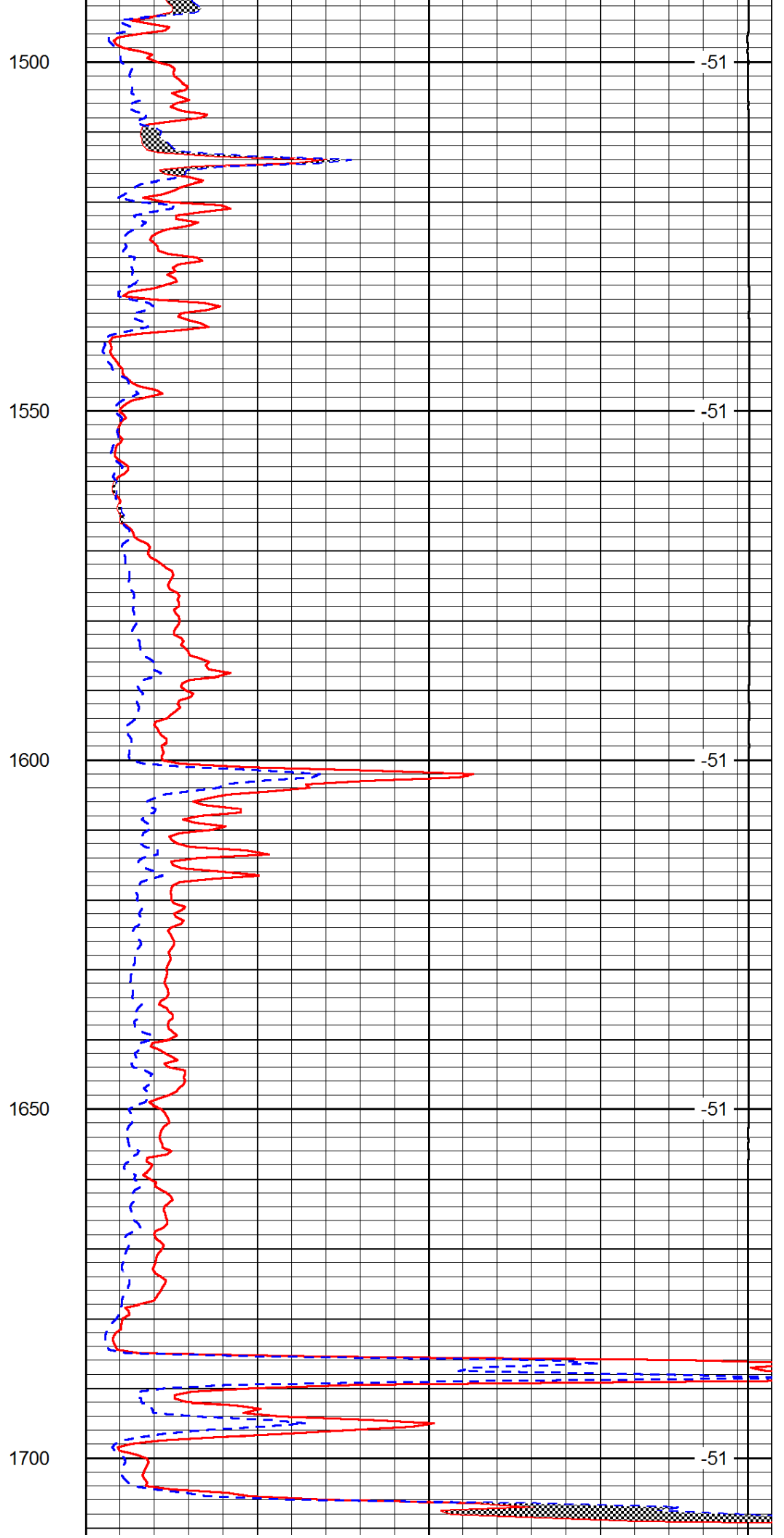
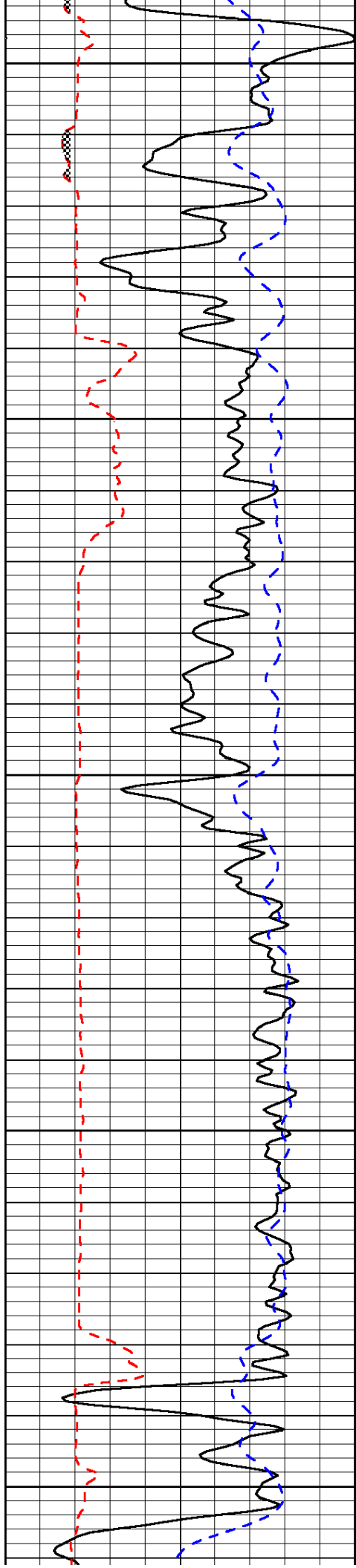
-53

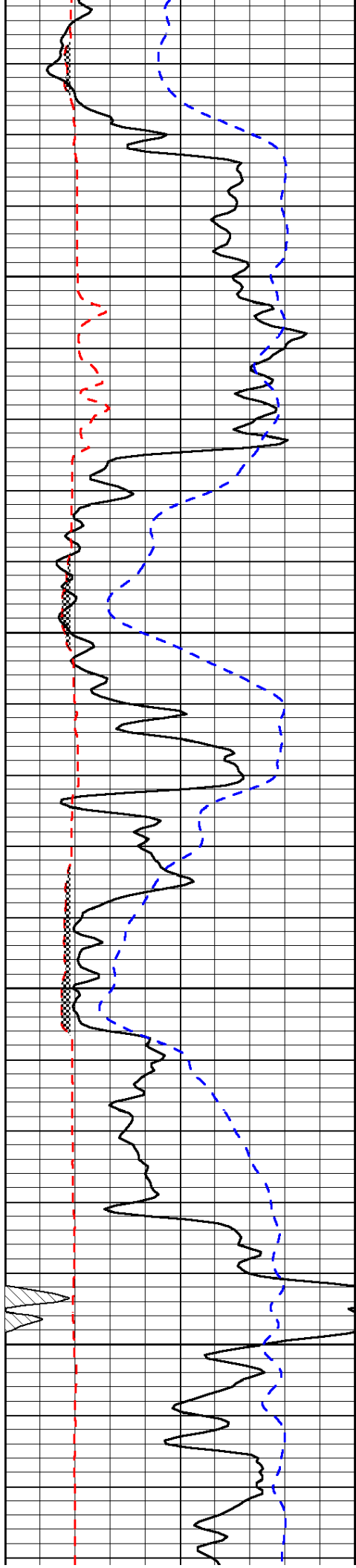
1400

-53

1450

-53



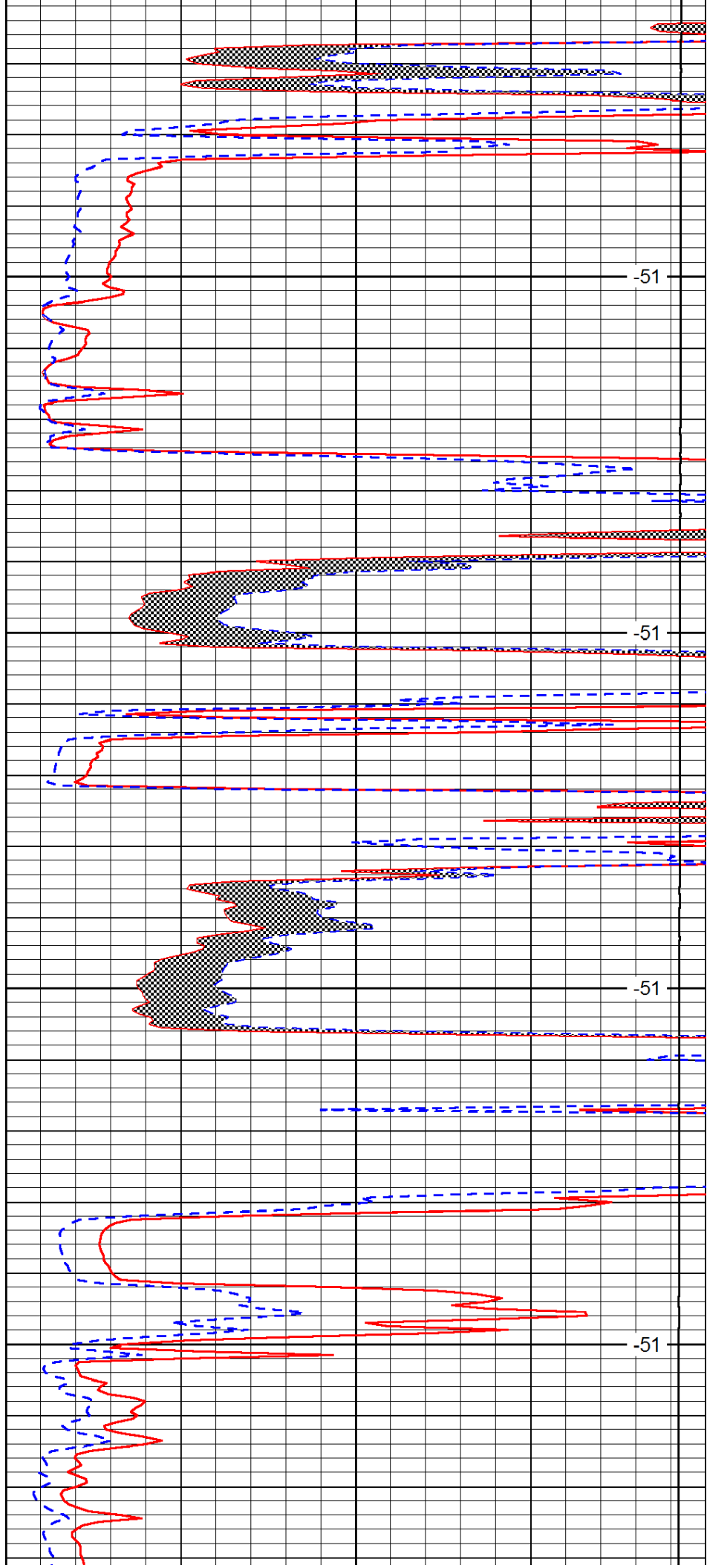


1750

1800

1850

1900

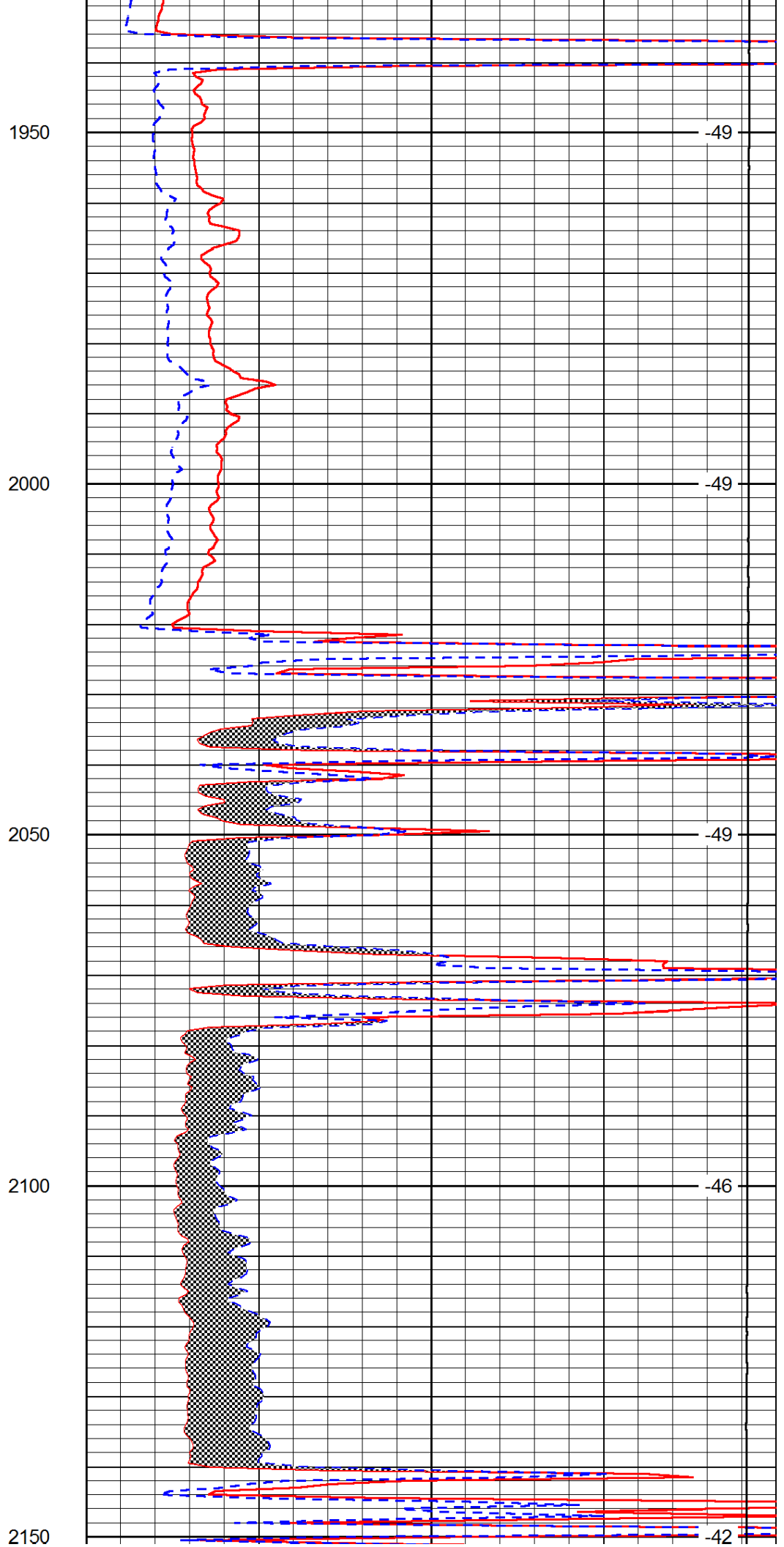
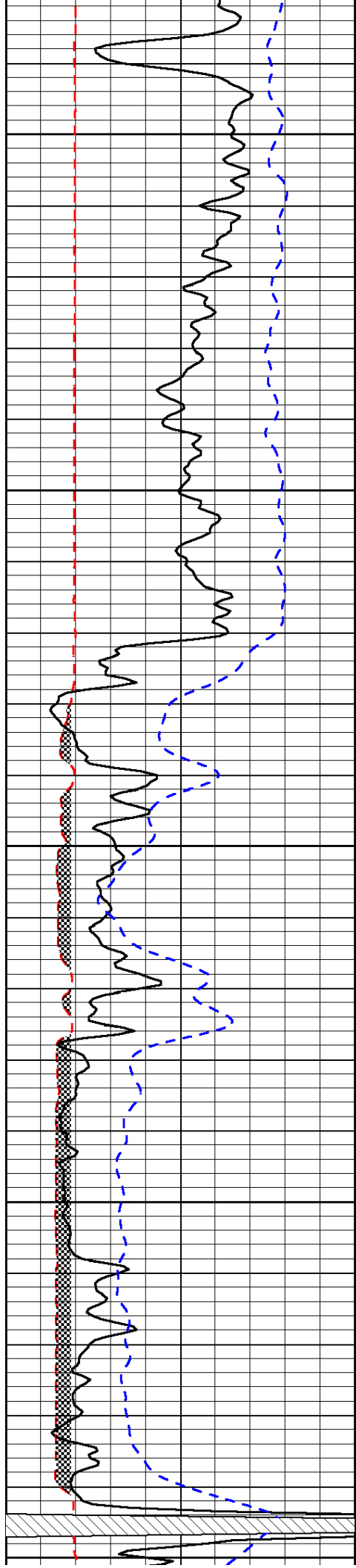


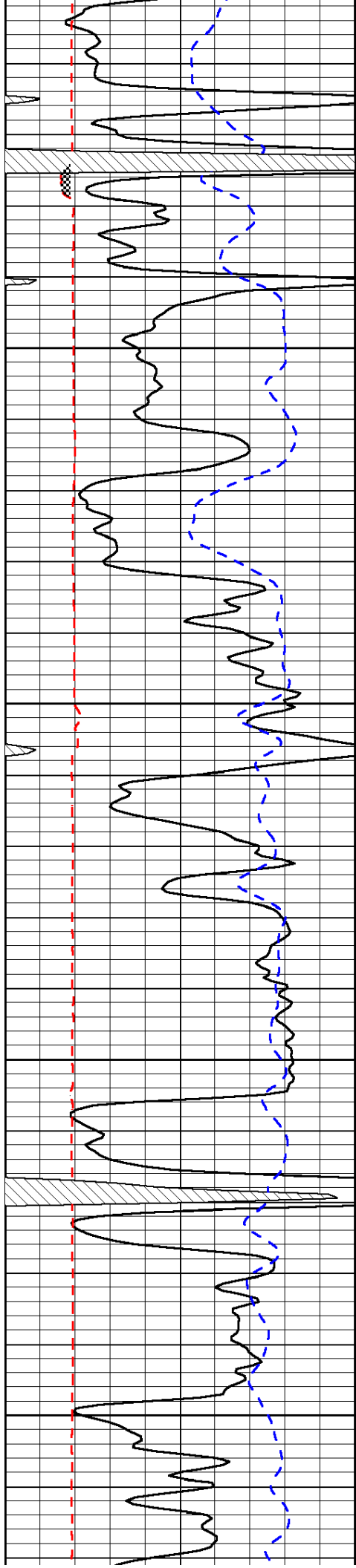
-51

-51

-51

-51



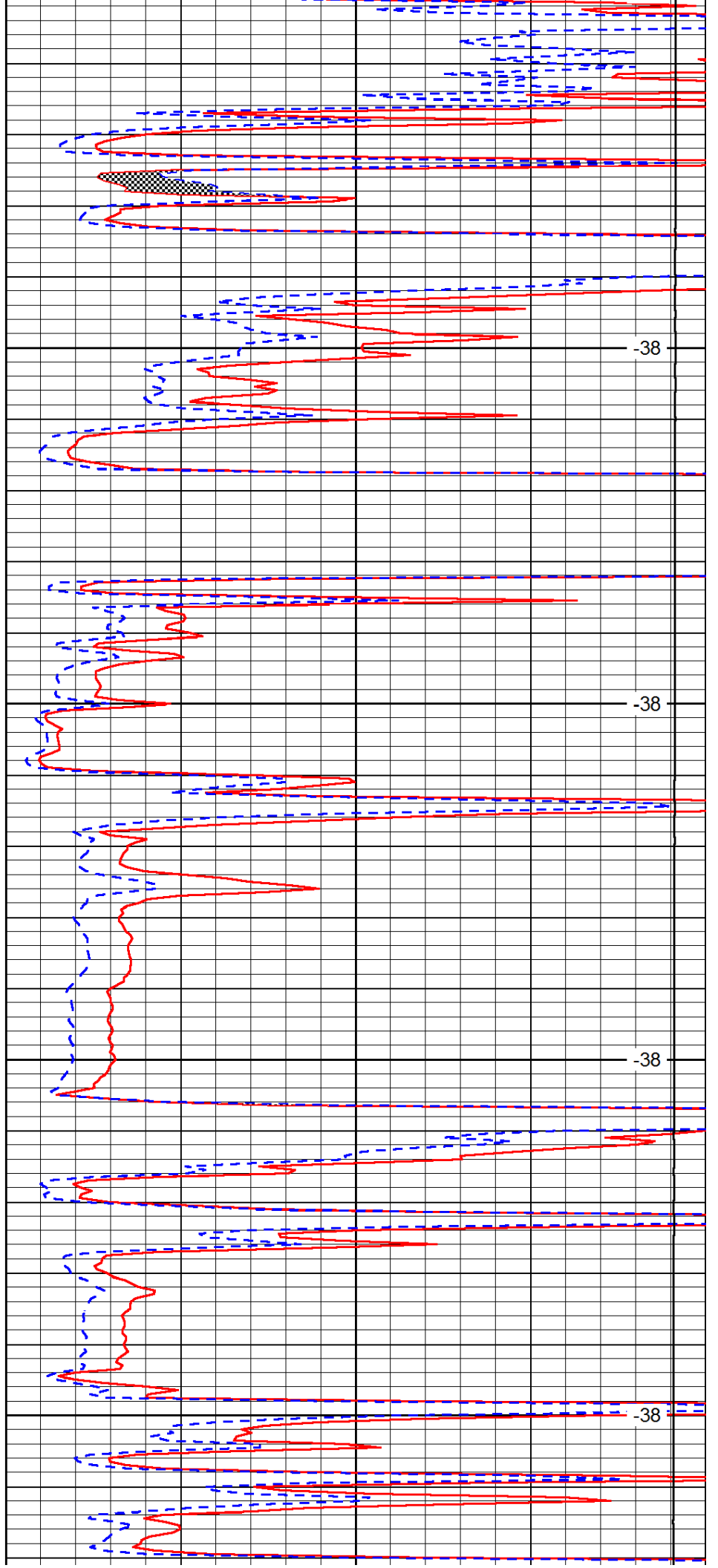


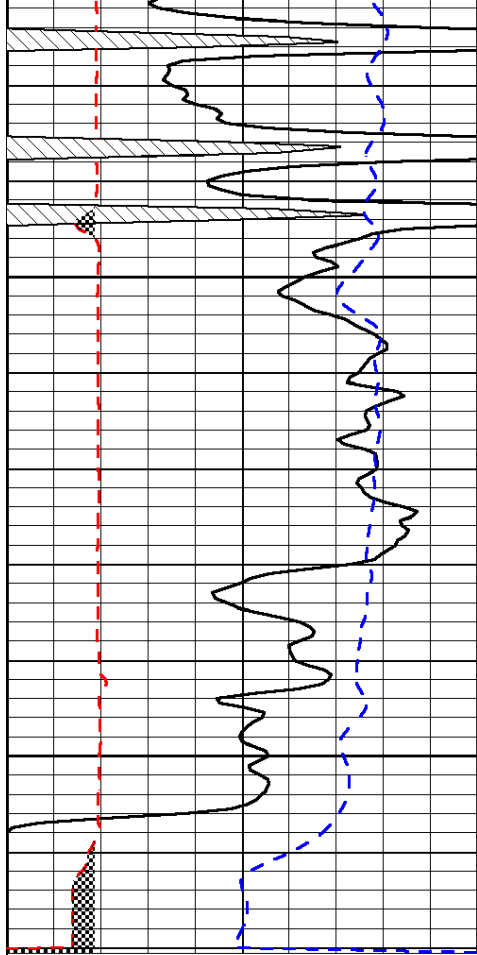
2200

2250

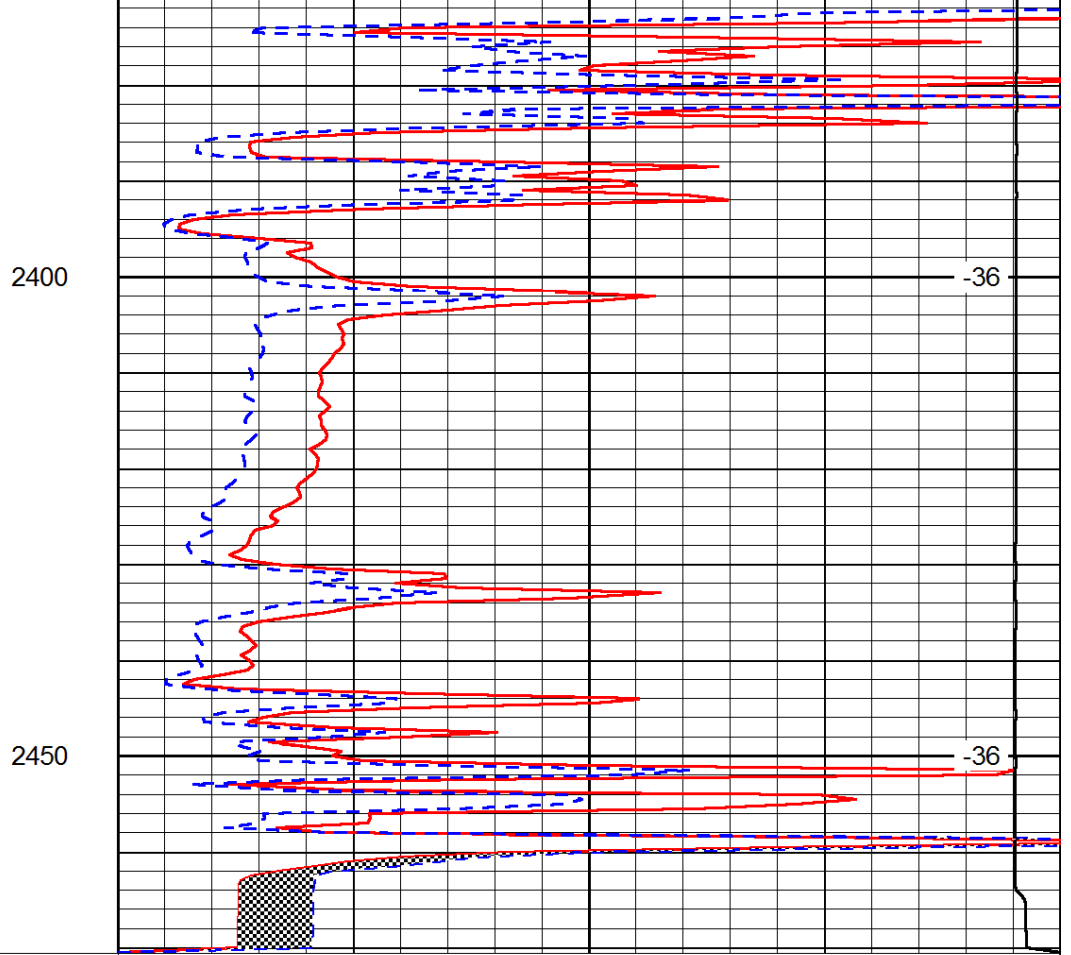
2300

2350





0	Gamma Ray	150
6	Micro Log Caliper (GAPI)	16
-200	SP (mV)	0



0	Micro Inverse 1 X 1	40
0	Micro Normal 2"	40
15000	Line Weight	0

LSPD