



DIGITAL LOG (785) 625-3858

Dual Induction Log

15-015-23,938-00-00

API No.

Company Vess Oil Corporation

Well J.W. Smith "A" No. 47

Field Augusta

County Butler State Kansas

Location 2,050 FNL & 1,500' FWL

Sec: 20 Twp: 28S Rge: 4E

Permanent Datum Ground Level Elevation 1265

Log Measured From Kelly Bushing 6 Ft. Above Perm. Datum

Drilling Measured From Kelly Bushing

Other Services
CNL/CDL
MEL

Elevation

K.B. 1271
D.F. 1265
G.L. 1265

Date 5/5/2012

Run Number One

Depth Driller 2465

Depth Logger 2464

Bottom Logged Interval 2463

Top Log Interval 250

Casing Driller 8.625 @ 261

Casing Logger 260

Bit Size 7.875

Type Fluid in Hole Chemical

Salinity,ppm CL 1500

Density / Viscosity 9.2 55

pH / Fluid Loss 9.0 8.6

Source of Sample Flowline

Rm @ Meas. Temp 1.28 @ 74

Rmf @ Meas. Temp .96 @ 74

Rmc @ Meas. Temp 1.73 @ 74

Source of Rmf / Rmc Charts

Rm @ BHT .94 @ 101

Operating Rig Time 4 1/2 Hours

Max Rec. Temp. F 101

Equipment Number 10

Location Hays

Recorded By J. Long

Witnessed By Roger Martin

<<< Fold Here >>>

All interpretations are opinions based on inferences from electrical or other measurements and we cannot and do not guarantee the accuracy or correctness of any interpretation, and we shall not, except in the case of gross or willful negligence on our part, be liable or responsible for any loss, costs, damages, or expenses incurred or sustained by anyone resulting from any interpretation made by any of our officers, agents or employees. These interpretations are also subject to our general terms and conditions set out in our current Price Schedule.

Comments

Thank you for using Log-Tech, Inc.
(785) 625-3858

Andover, East on Highway 54/400 to Santa Fe Lake Road, 5 South to 150th Street, 1 East to curve, 1/4 further East to Diamond Road, 1/4 South to 153rd Street, 1 East, South Into through gate

Database File: c:\warrior\data\vess_j.w. smith a no. 47\vess_jw_smith_47hd.db
 Dataset Pathname: dil\vessdil
 Presentation Format: dil2in
 Dataset Creation: Sat May 05 21:01:19 2012
 Charted by: Depth in Feet scaled 1:600

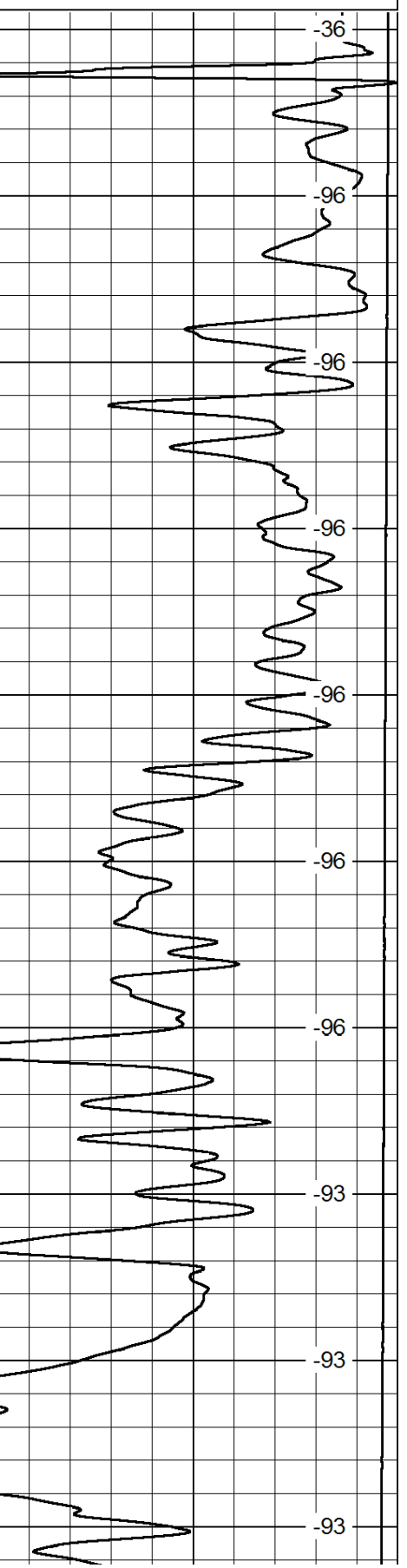
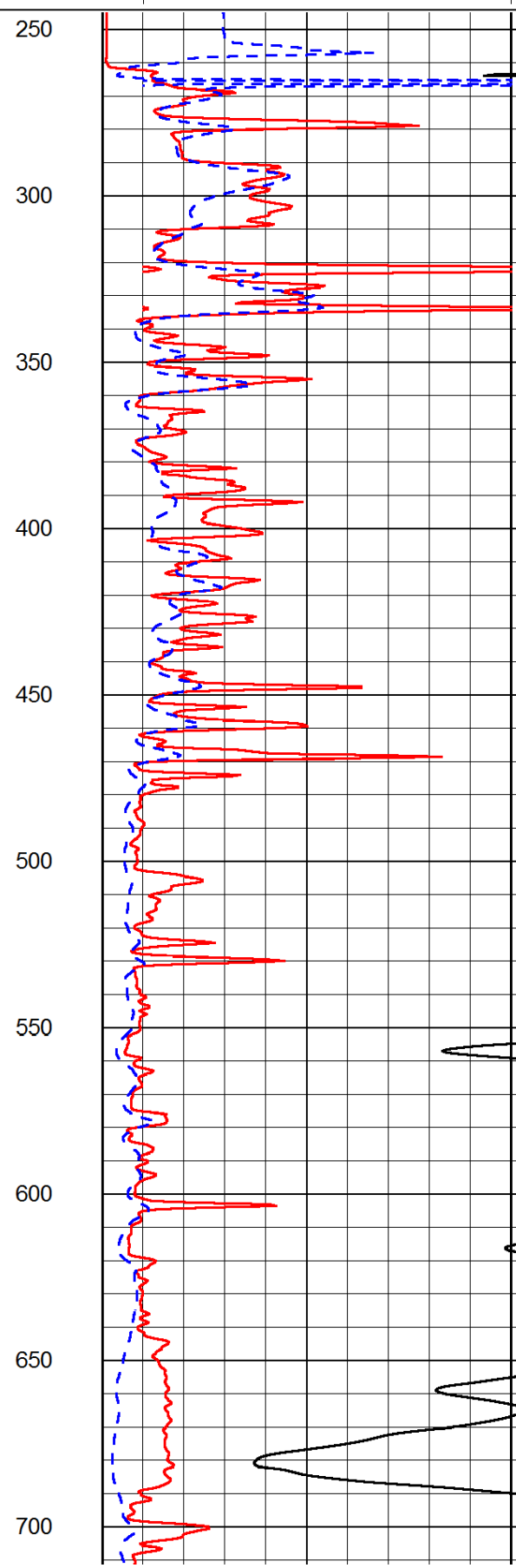
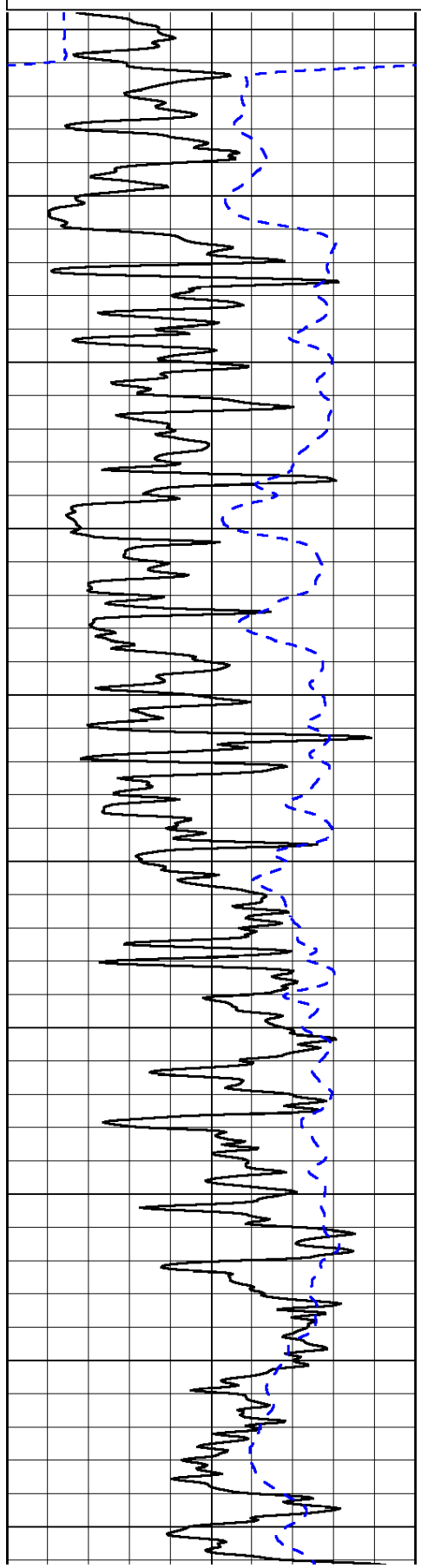
0	Gamma Ray	150
-200	SP (mV)	0

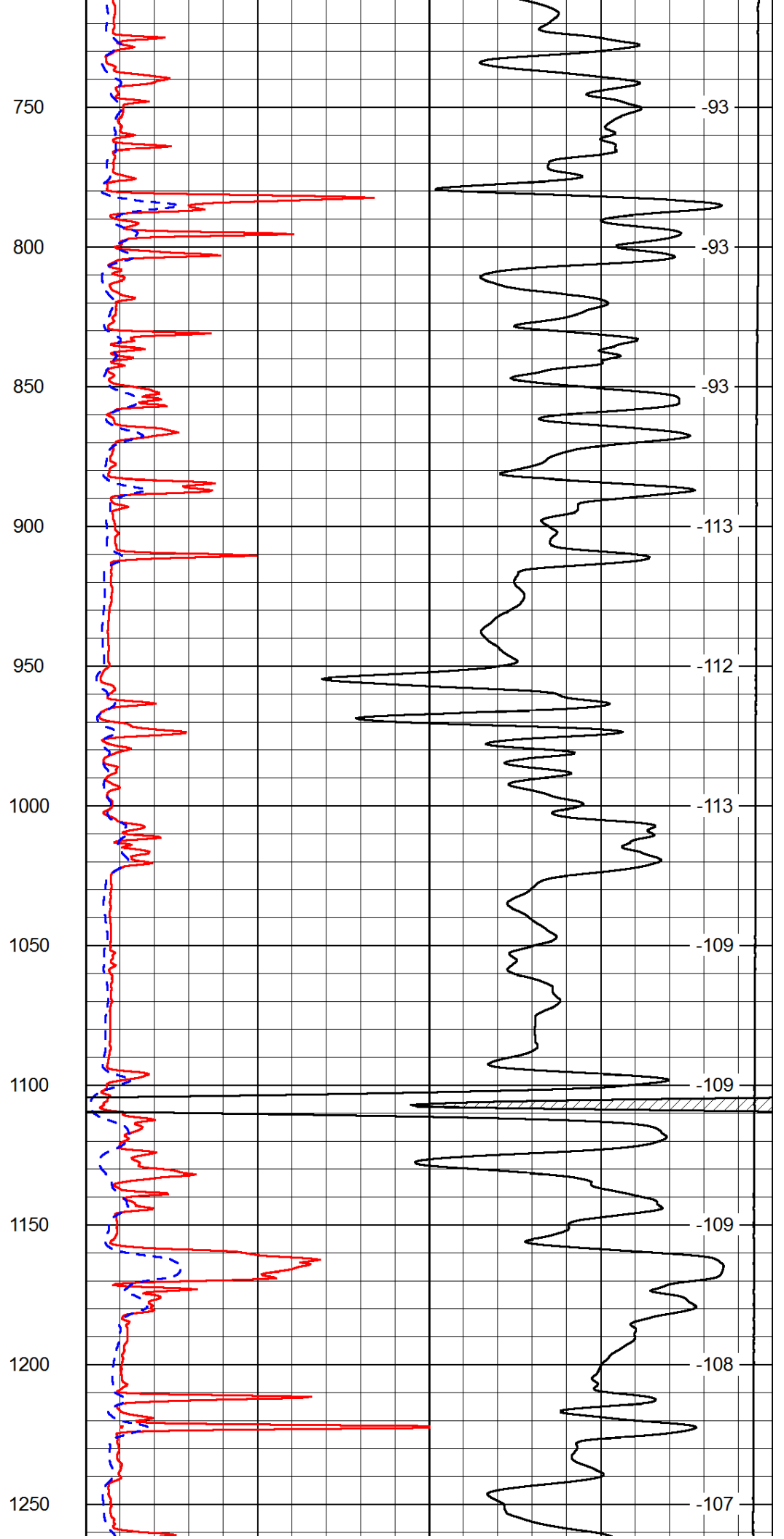
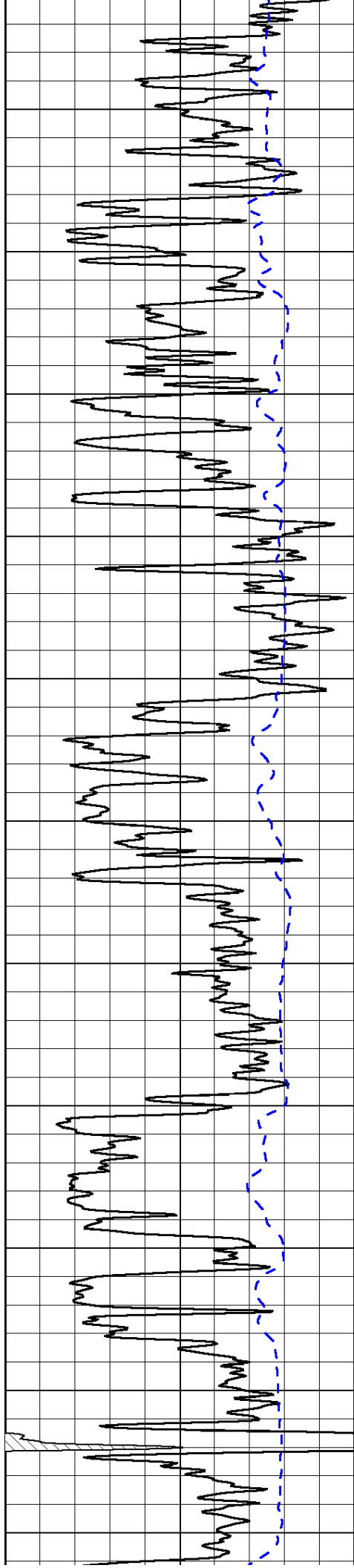
0	Shallow Resistivity	50
0	Deep Resistivity	50

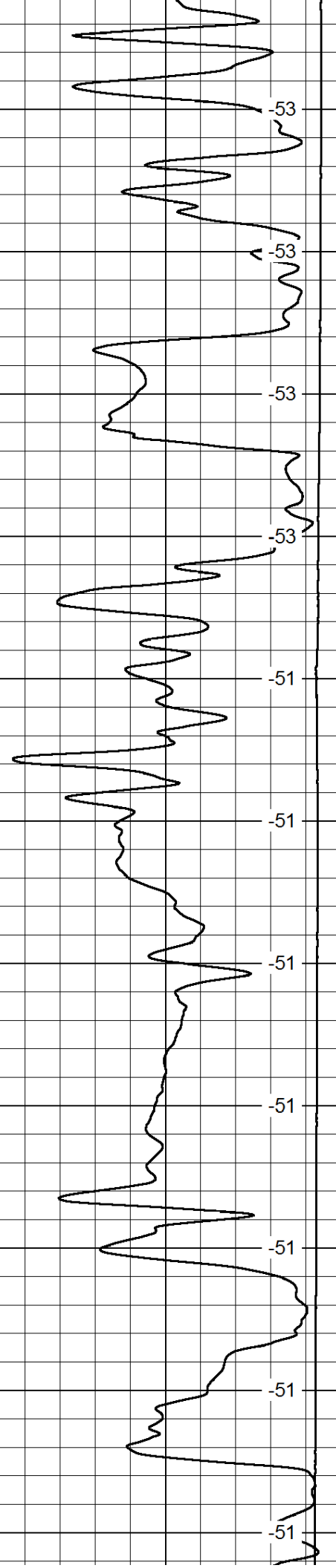
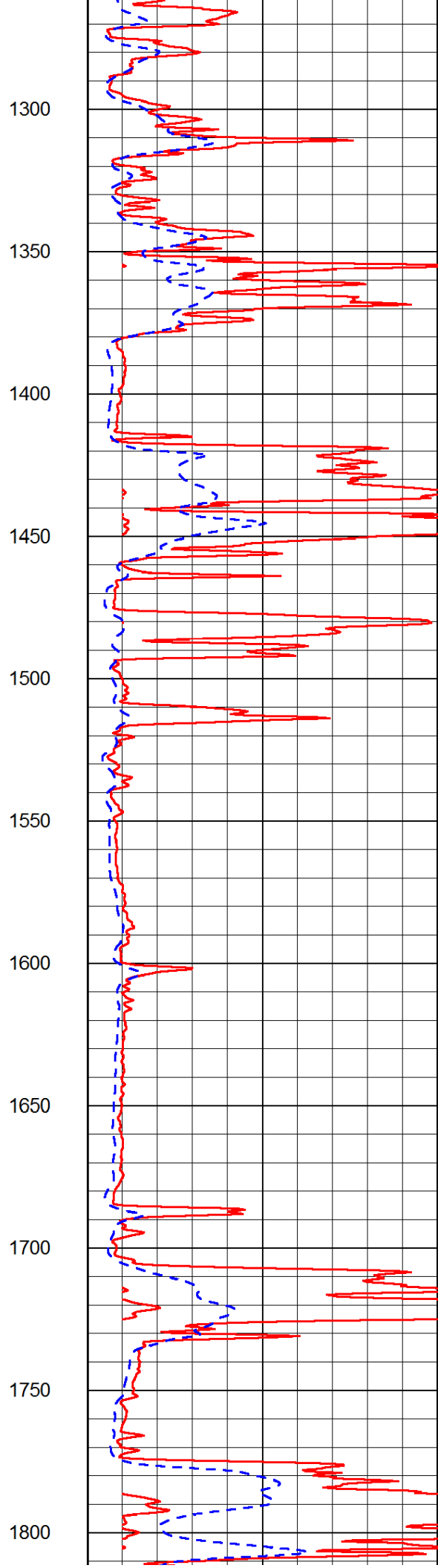
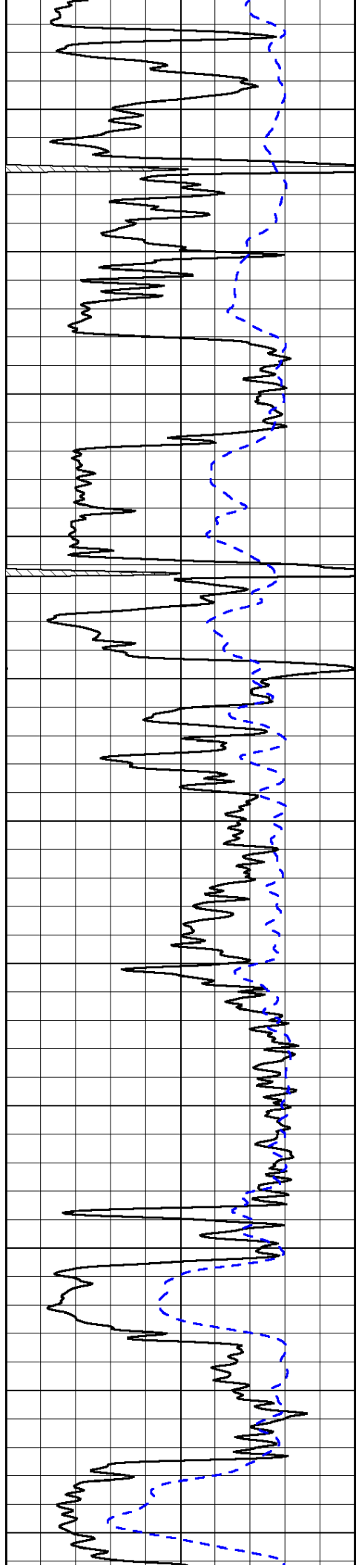
LSPD

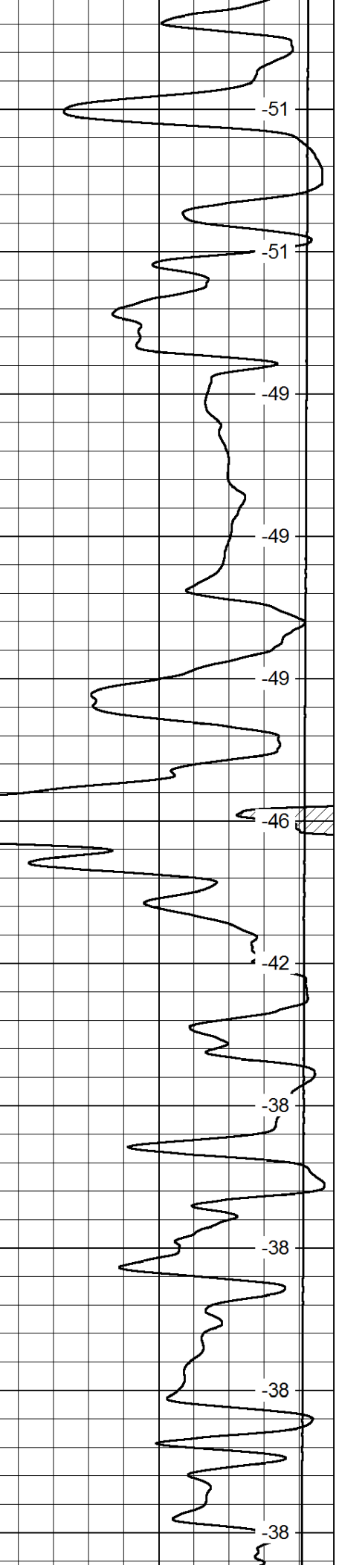
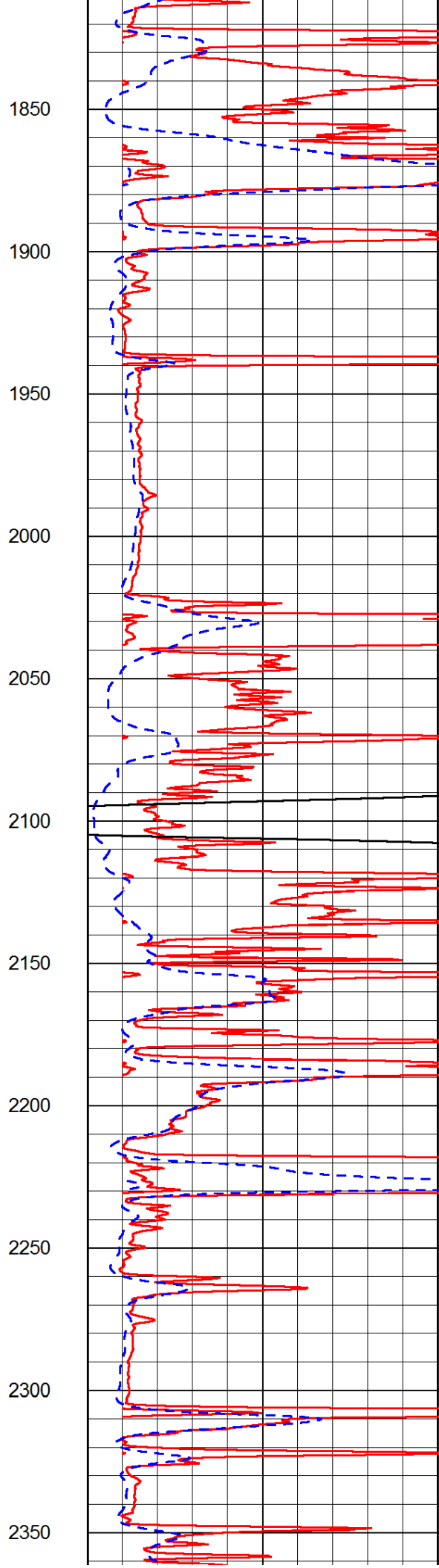
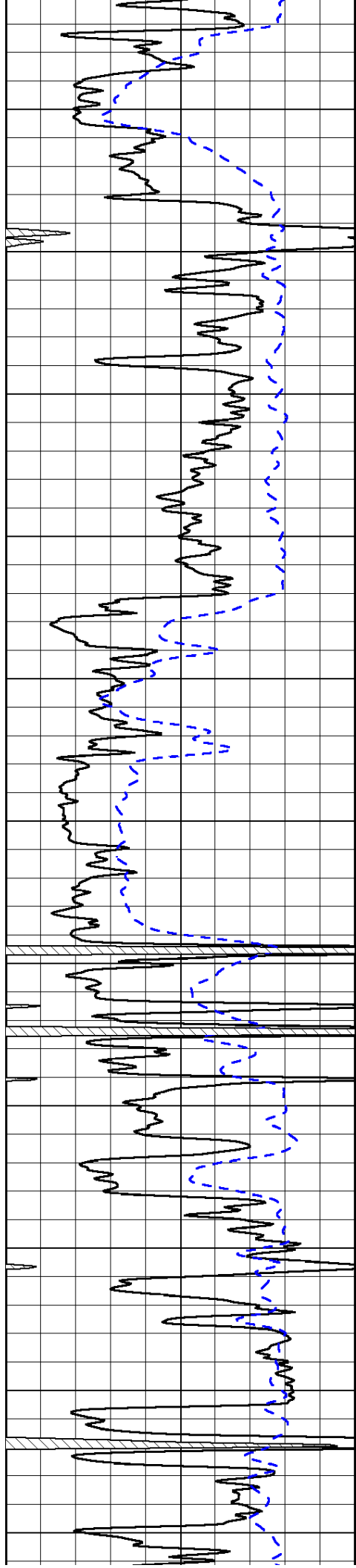
1000	Conductivity	0
15000	Line Tension	0

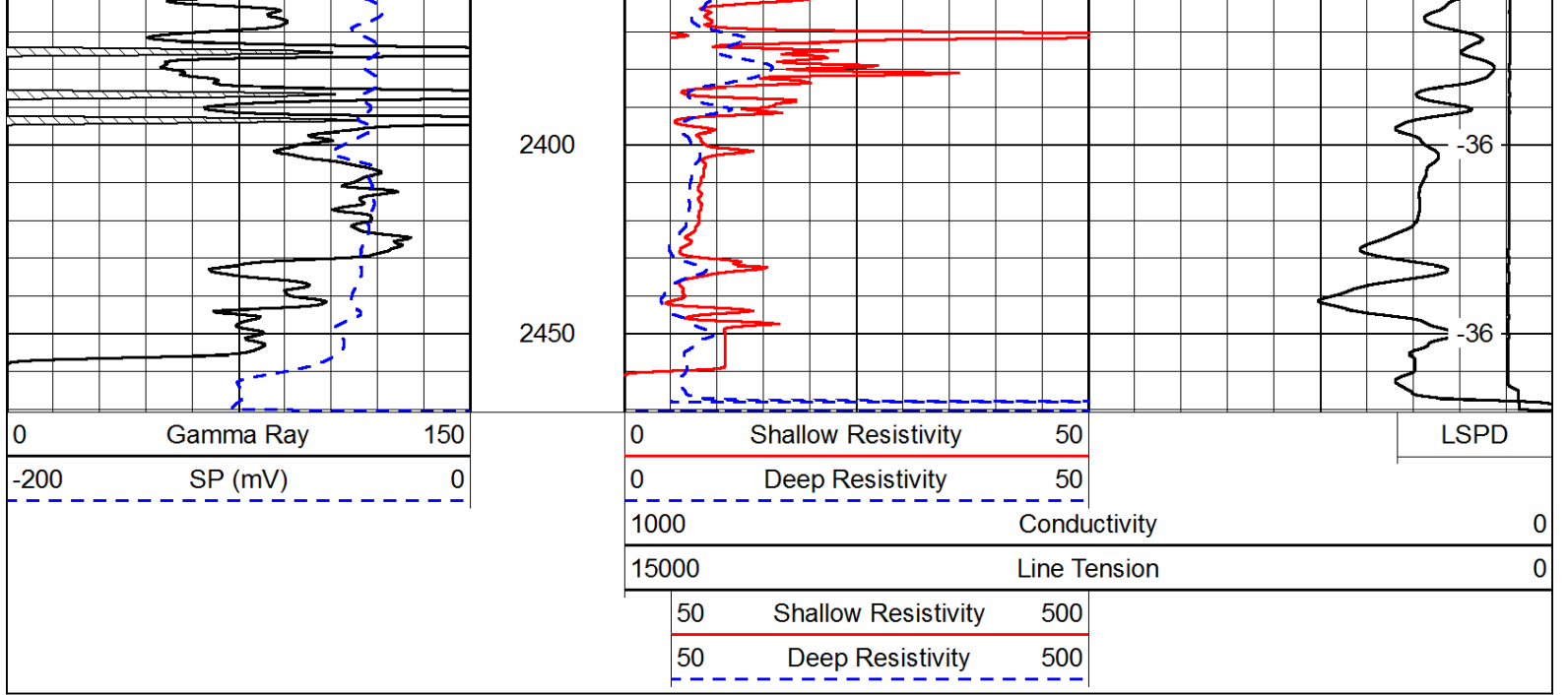
50	Shallow Resistivity	500
50	Deep Resistivity	500



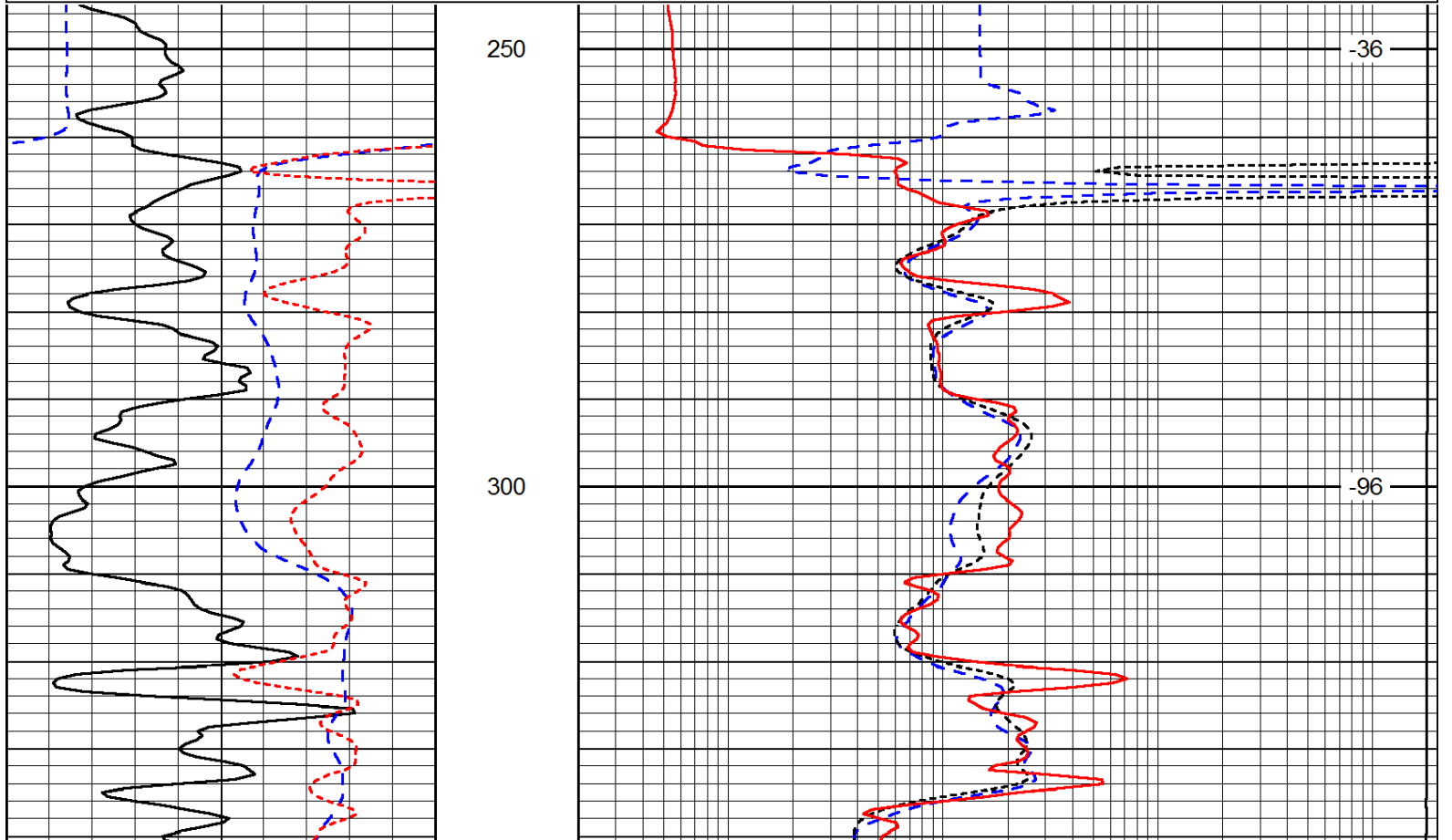
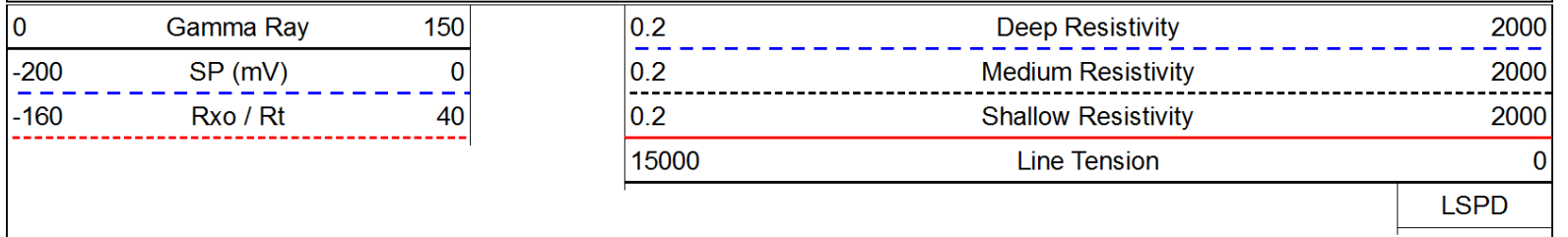


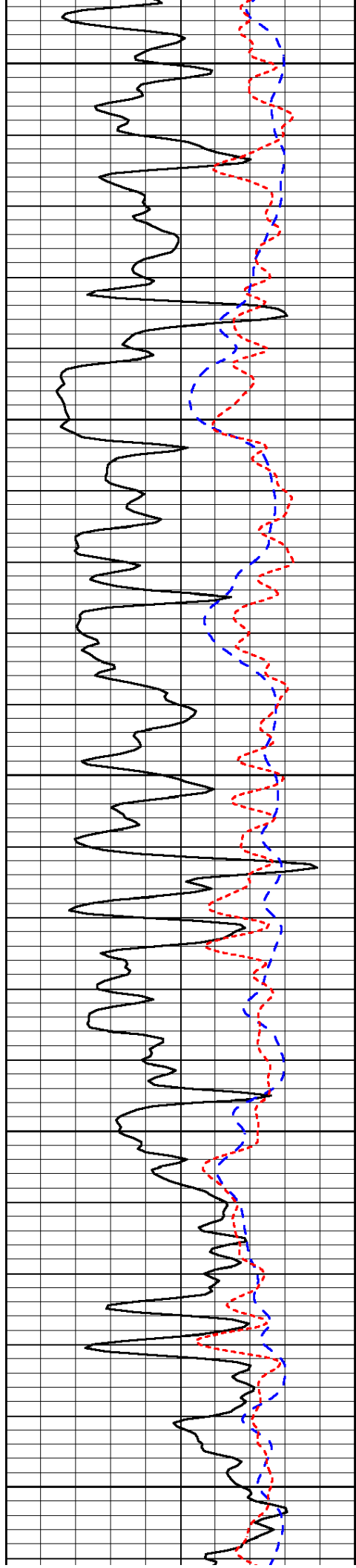






Database File: c:\warrior\data\vess_j.w. smith a no. 47\vess_jw_smith_47hd.db
 Dataset Pathname: dil/vessdil
 Presentation Format: dil
 Dataset Creation: Sat May 05 21:01:19 2012
 Charted by: Depth in Feet scaled 1:240





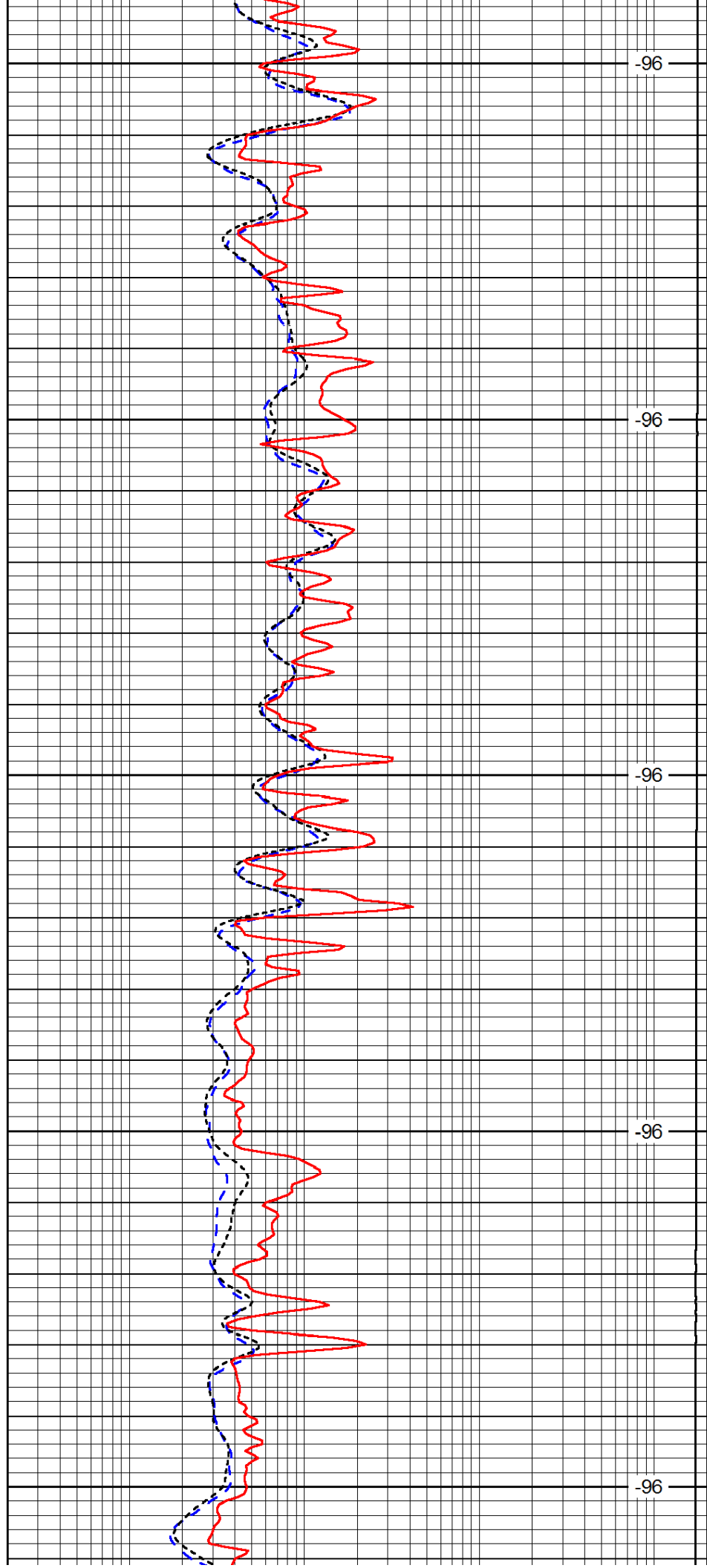
350

400

450

500

550



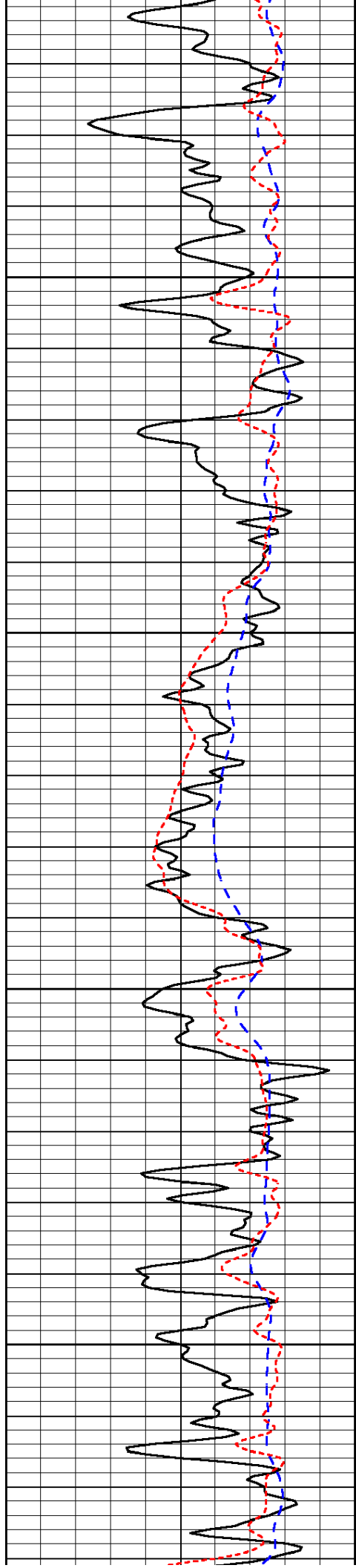
-96

-96

-96

-96

-96

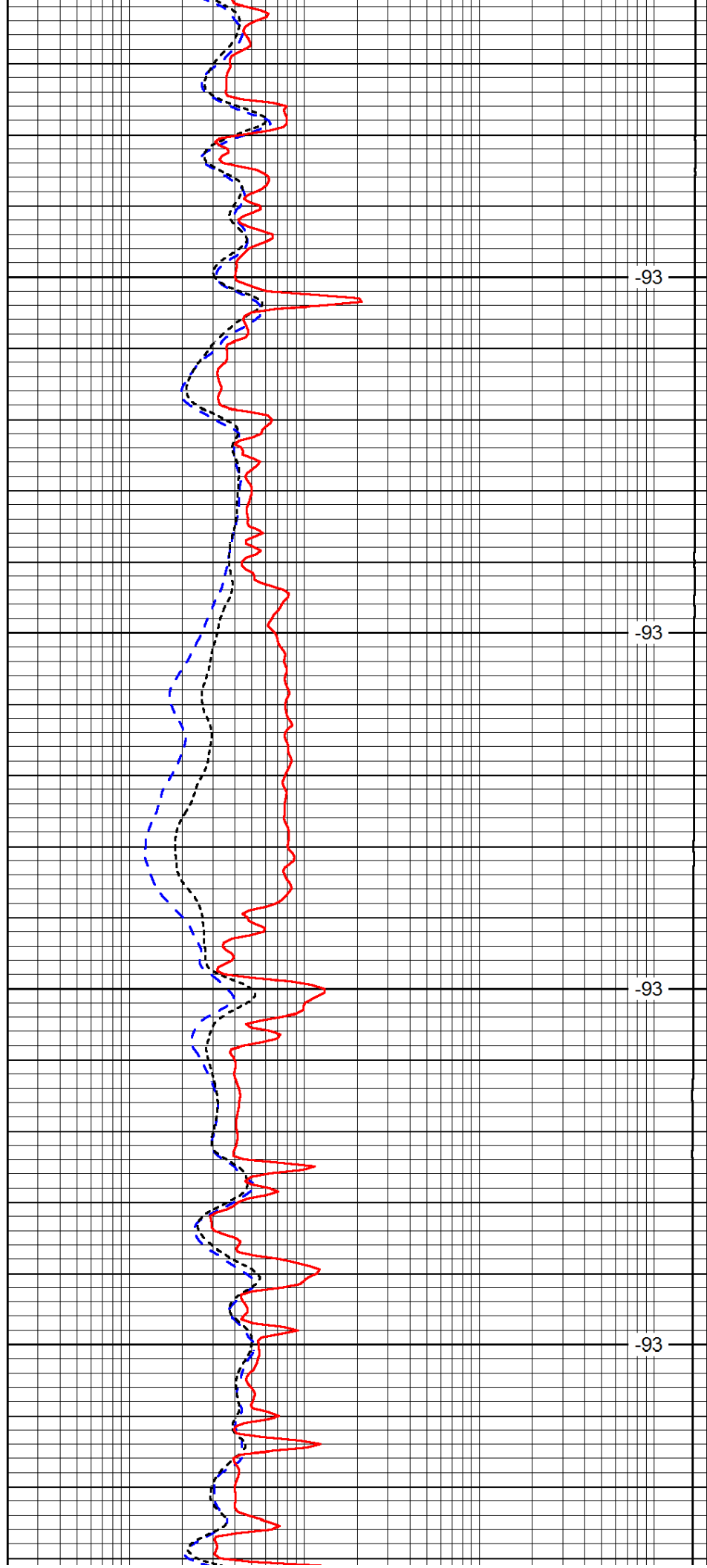


600

650

700

750

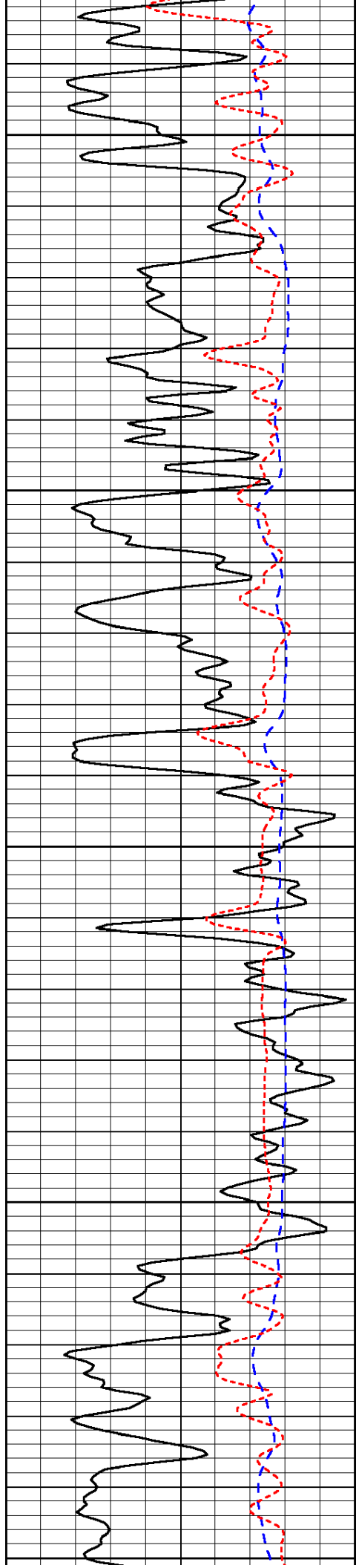


-93

-93

-93

-93



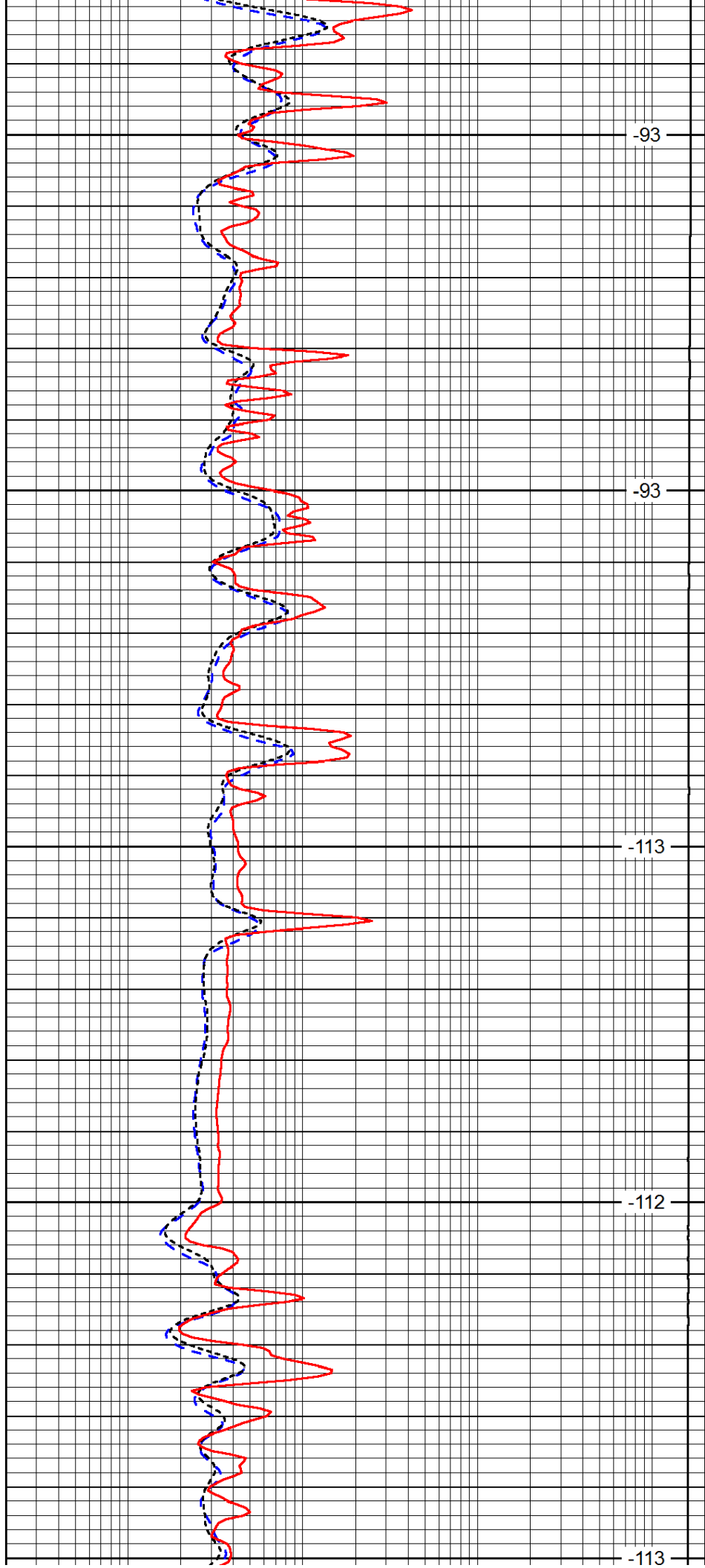
800

850

900

950

1000



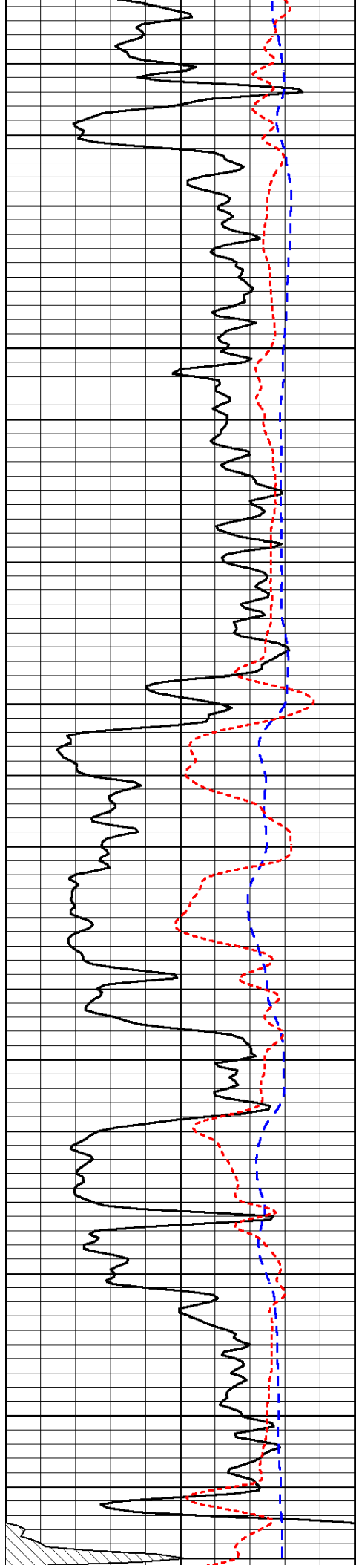
-93

-93

-113

-112

-113

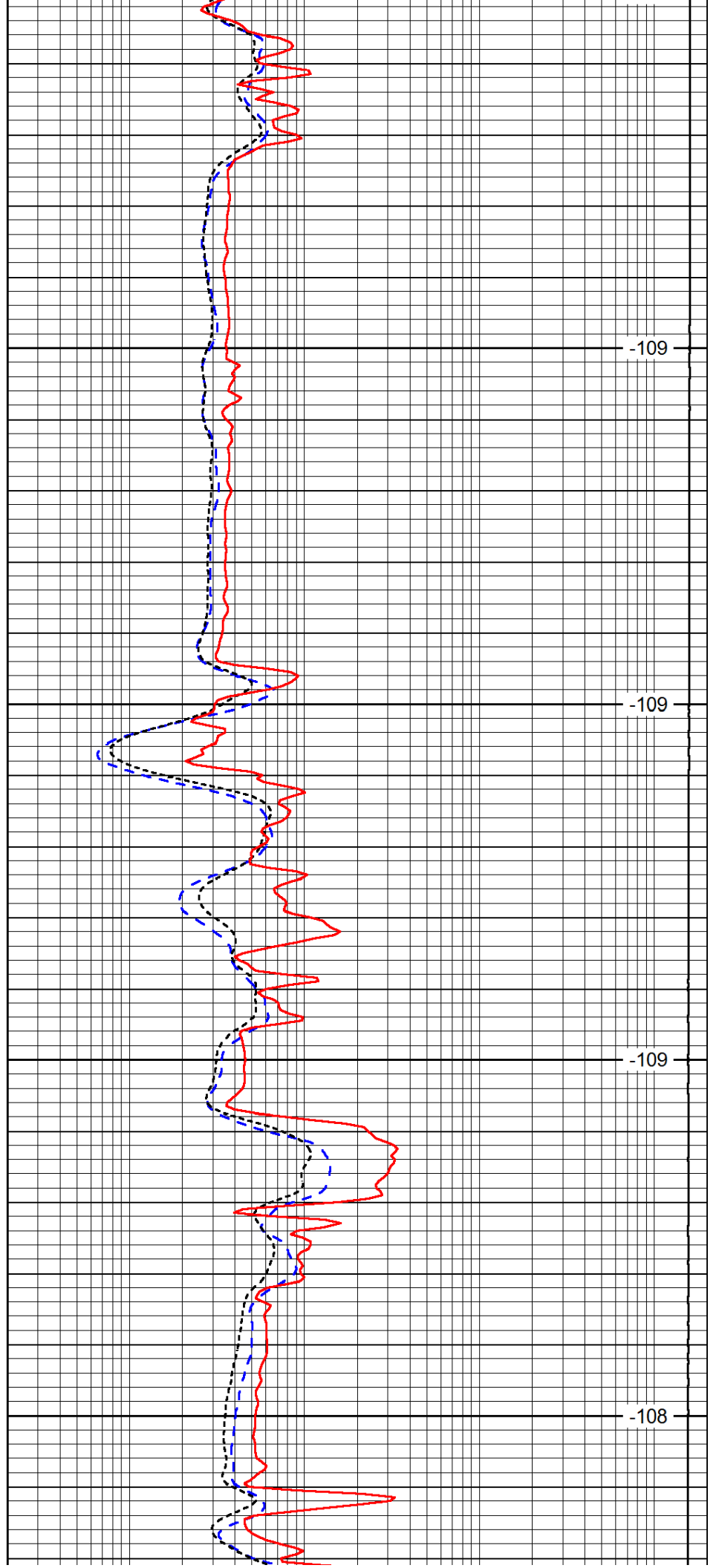


1050

1100

1150

1200

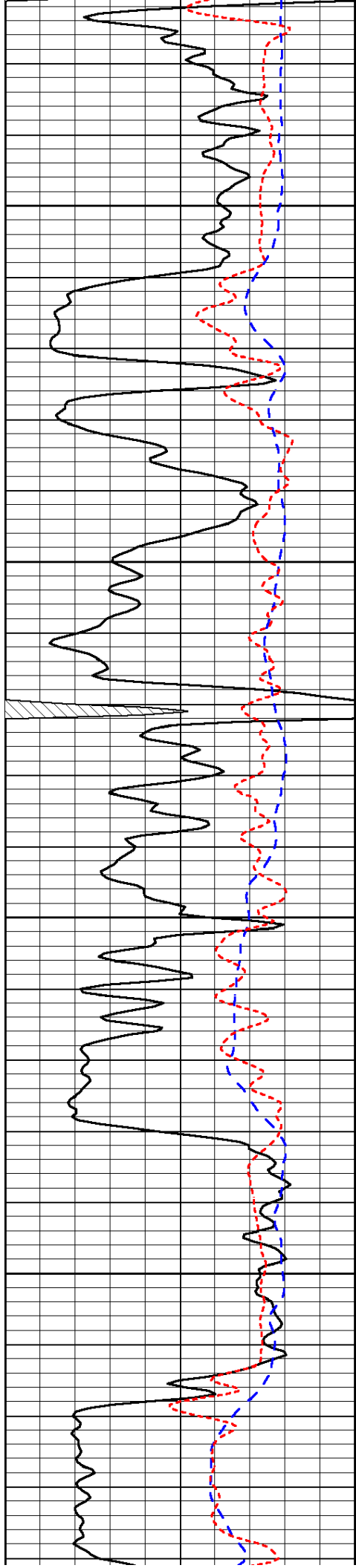


-109

-109

-109

-108

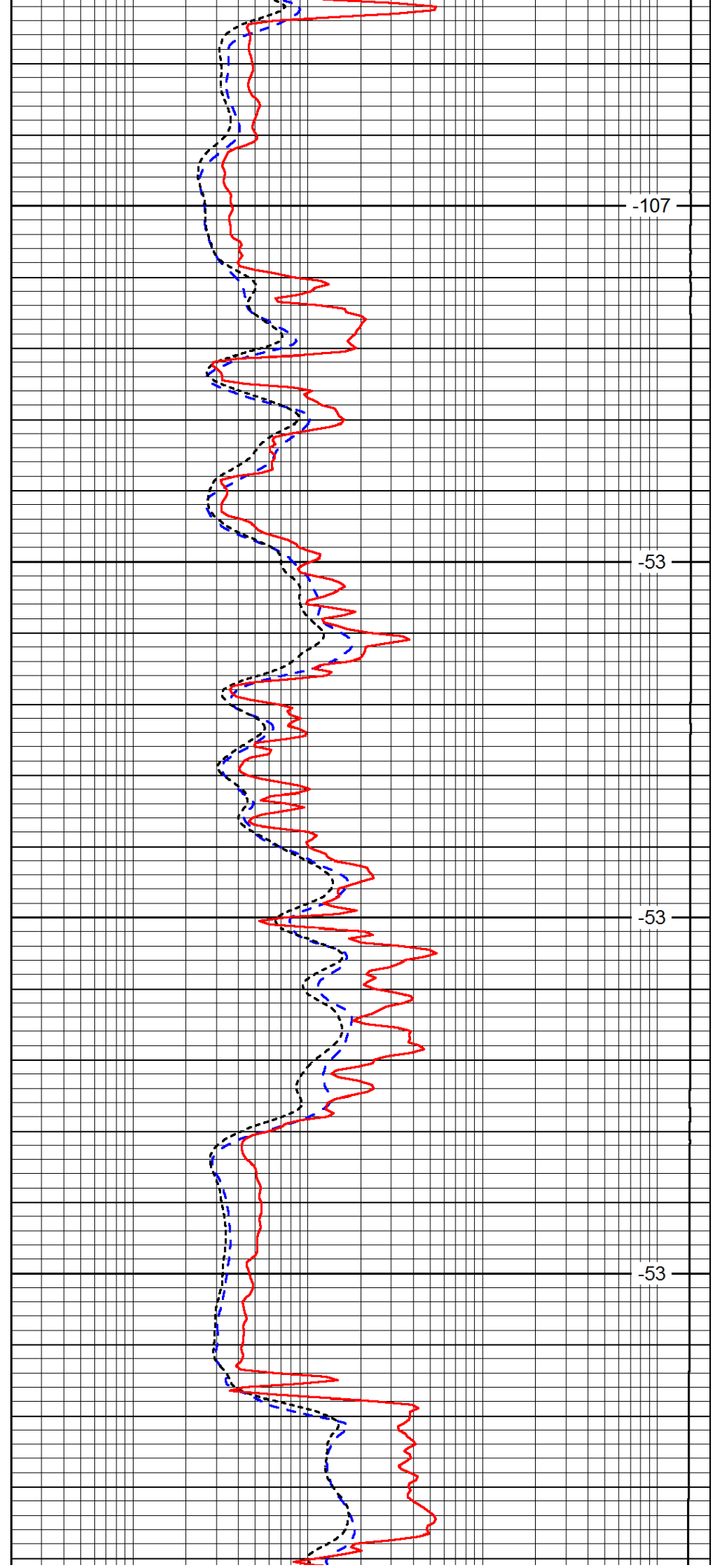


1250

1300

1350

1400

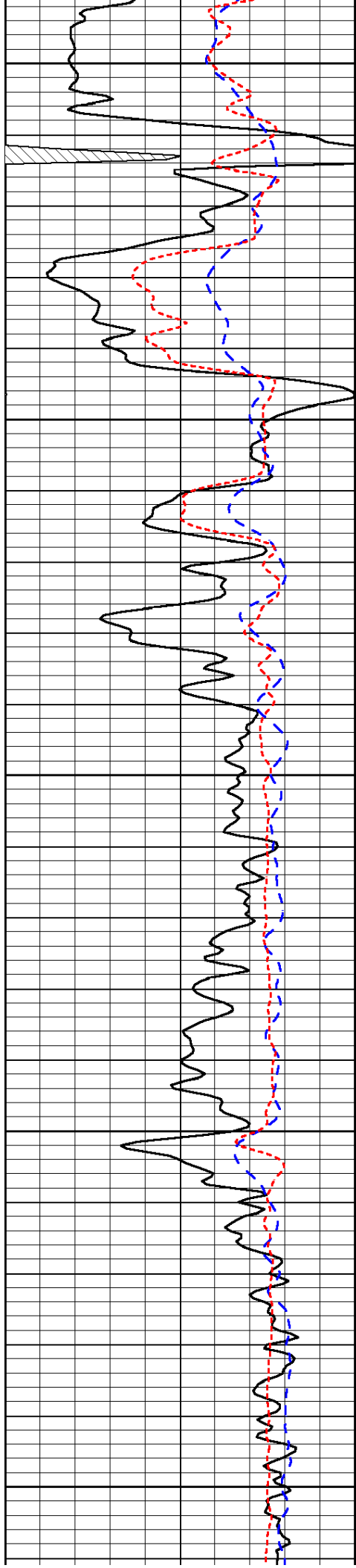


-107

-53

-53

-53



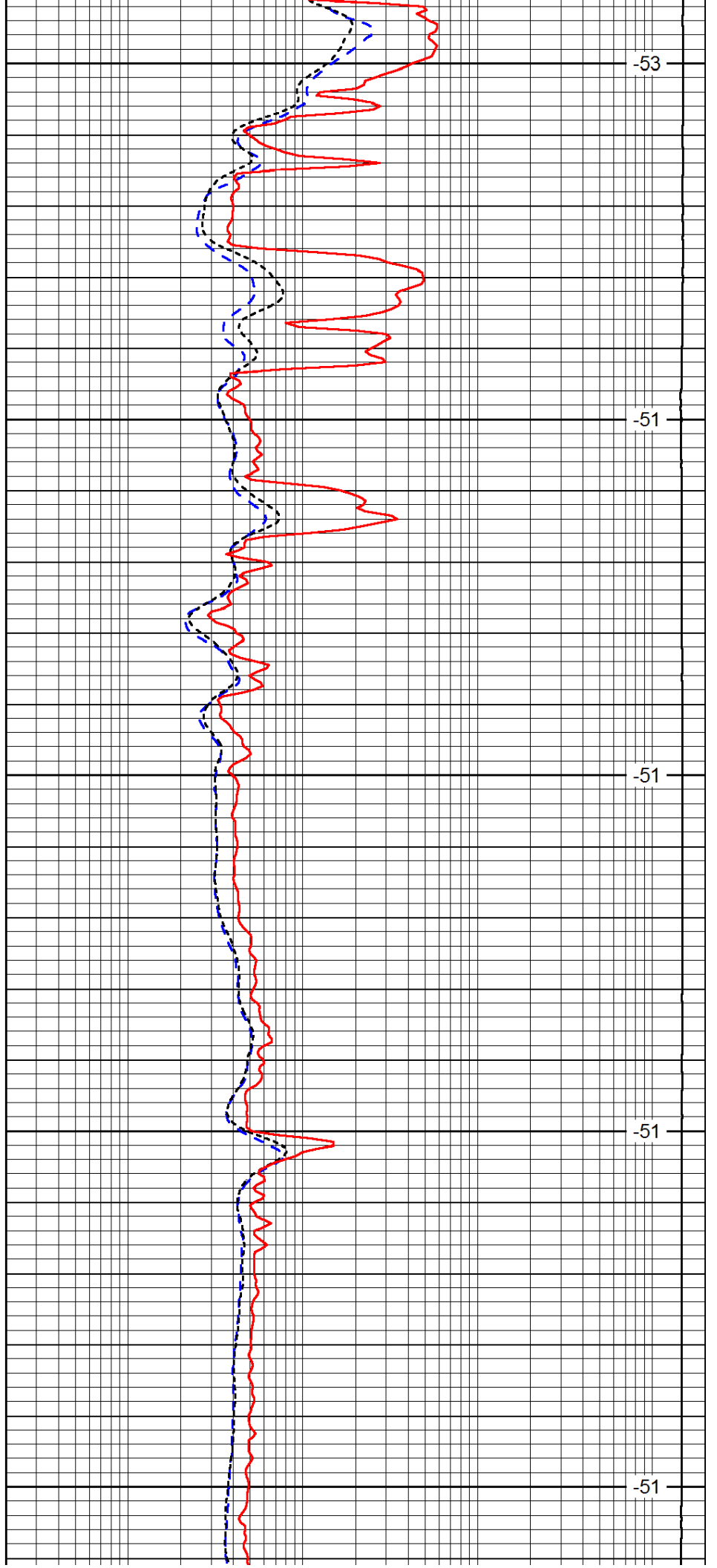
1450

1500

1550

1600

1650



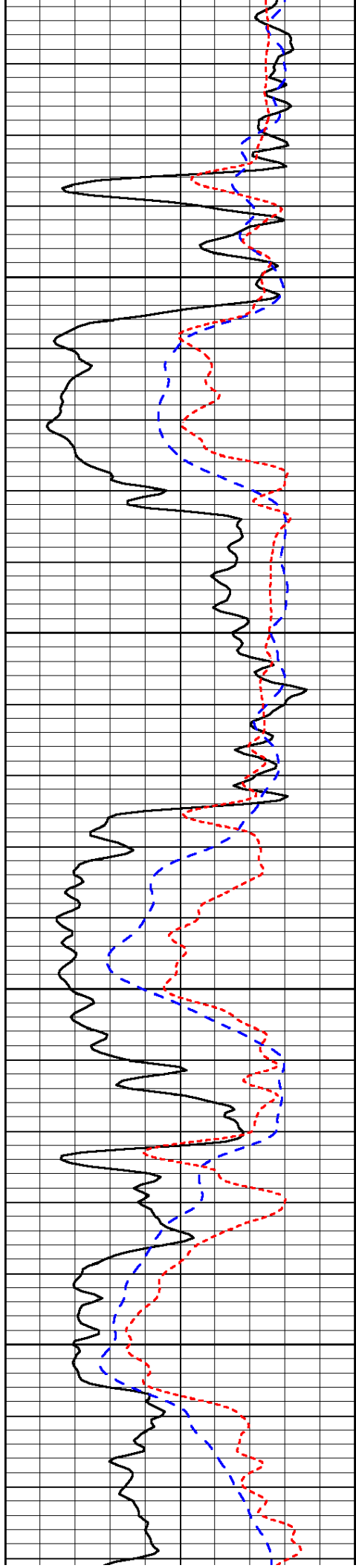
-53

-51

-51

-51

-51

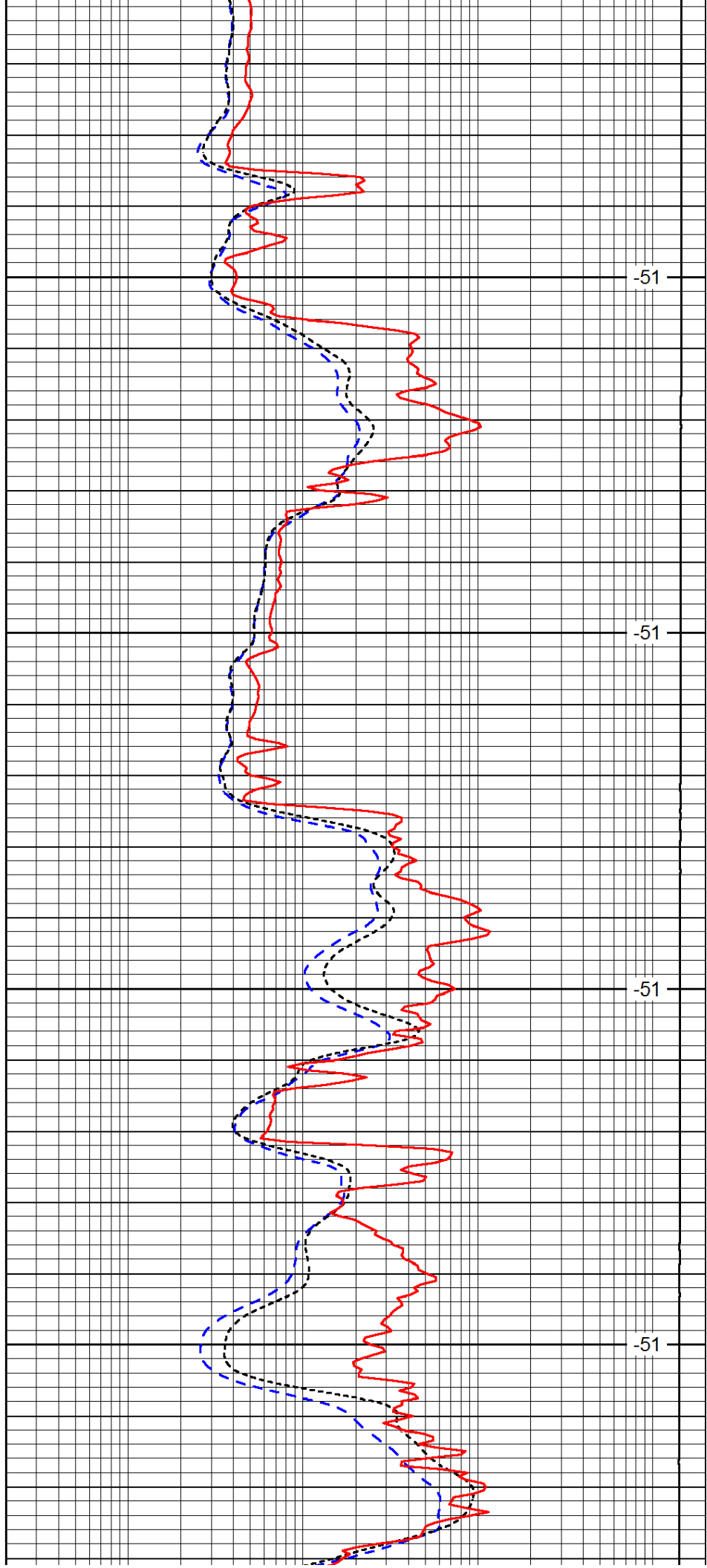


1700

1750

1800

1850

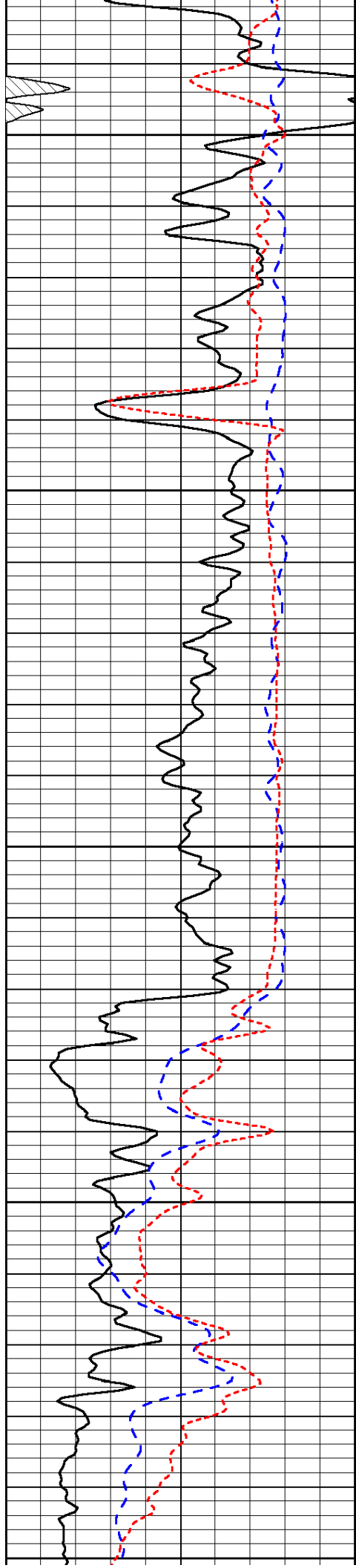


-51

-51

-51

-51



1900

1950

2000

2050

2100

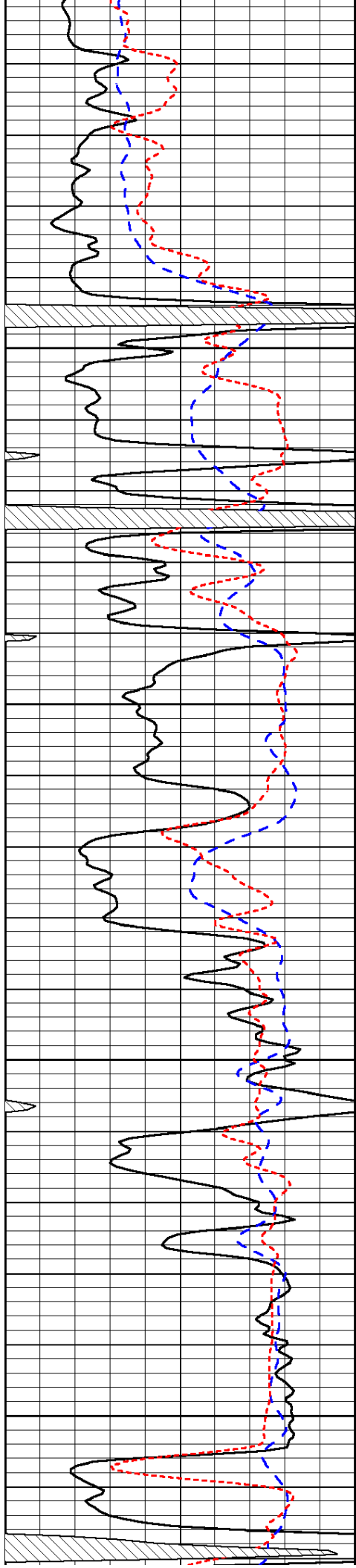
-51

-49

-49

-49

-46

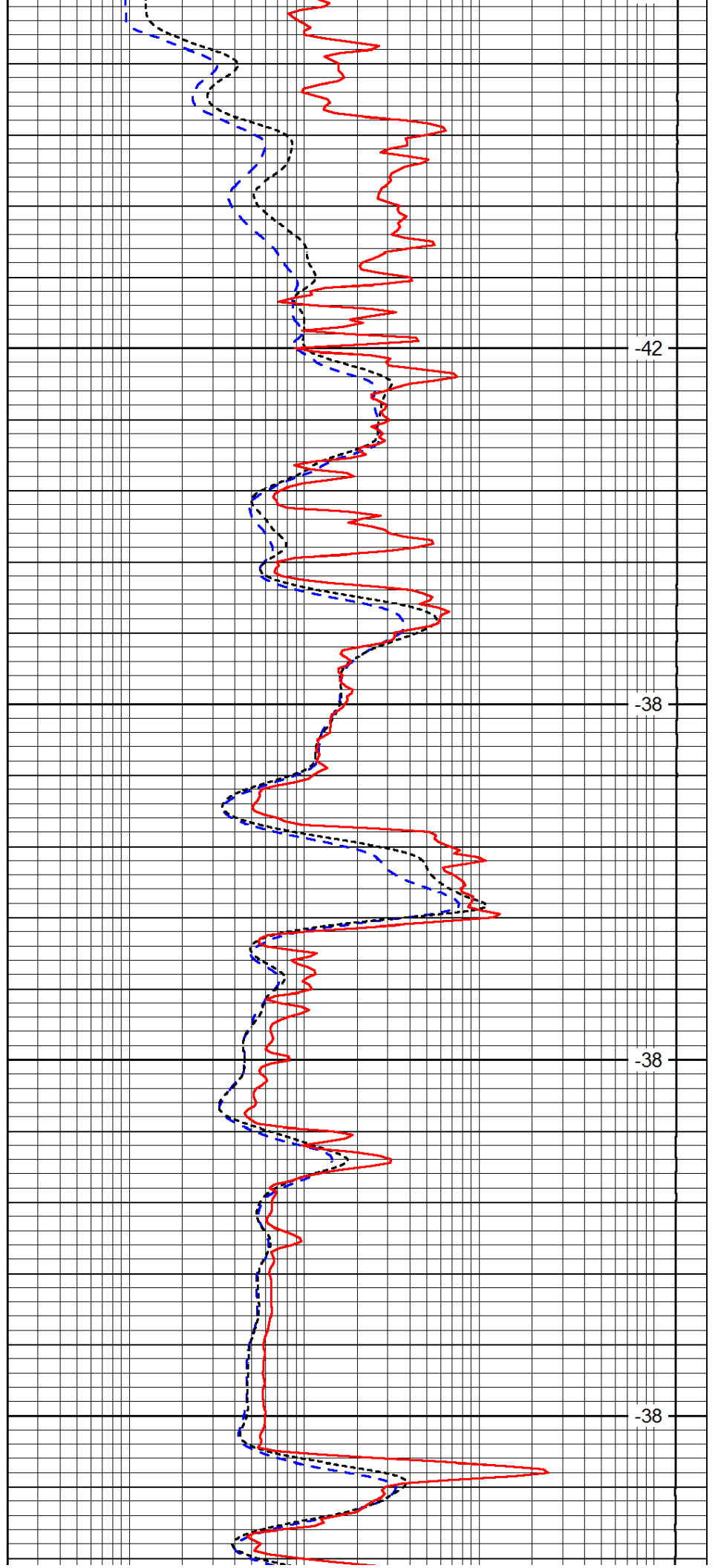


2150

2200

2250

2300

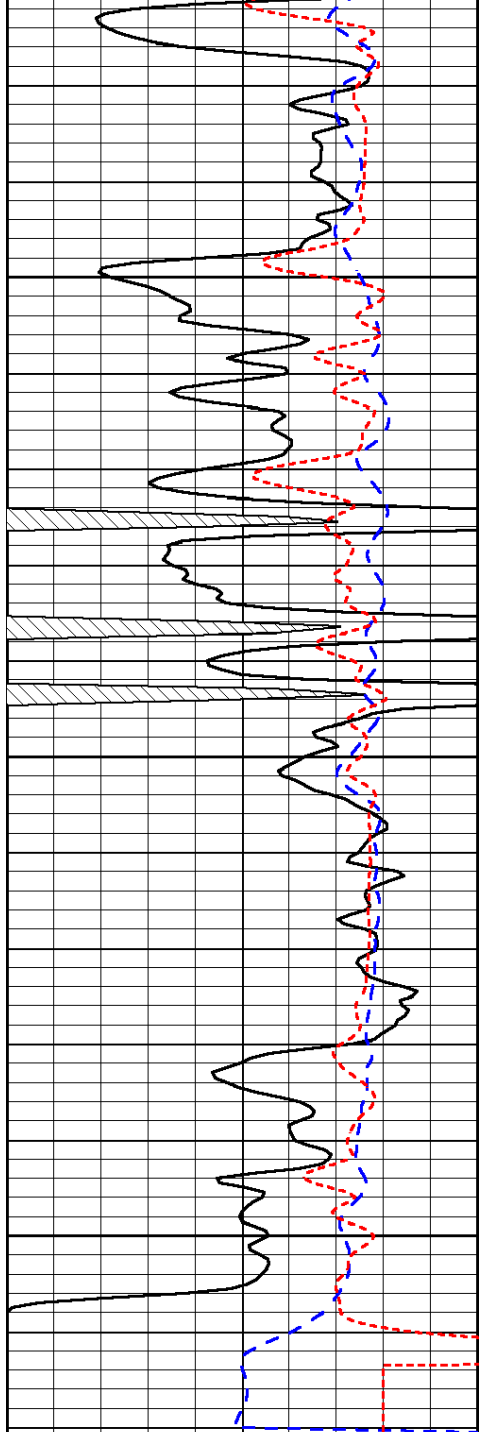


-42

-38

-38

-38

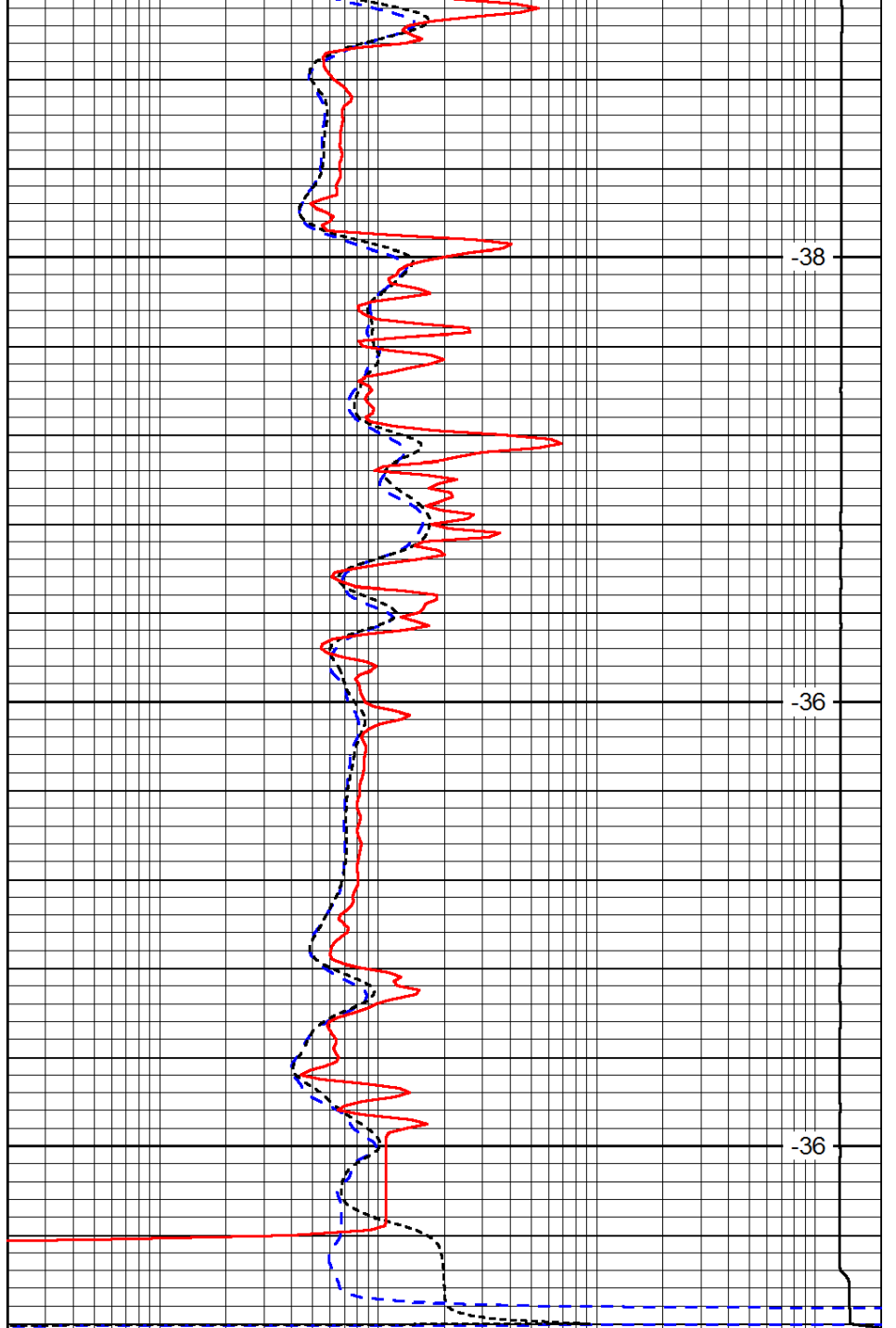


2350

2400

2450

0	Gamma Ray	150
-200	SP (mV)	0
-160	Rxo / Rt	40



-38

-36

-36

0.2	Deep Resistivity	2000
0.2	Medium Resistivity	2000
0.2	Shallow Resistivity	2000
15000	Line Tension	0

LSPD