

Company: John O Farmer Inc.
 Well: Sutley A #1
 Field: Wildcat
 County: Phillips
 State: Kansas

Company: John O Farmer Inc.
 Well: Sutley A #1
 Field: Wildcat
 County: Phillips
 State: Kansas

Location: 1920' FNL & 740' FWL
 API #: 15-147-20651
 Other Services: _____
 SEC 19 TWP 4S RGE 18W
 Permanent Datum: Ground Level Elevation: 1937'
 Log Measured From: KB 5' AGL
 Drilling Measured From: KB
 Elevation: K.B. 1942', D.F. 1941', G.L. 1937'

Date	1-5-12						
Run Number	One						
Depth Driller	3600'						
Depth Logger	3598'						
Bottom Logged Interval	3598'						
Top Log Interval	2200'						
Open Hole Size	7 7/8"						
Type Fluid	Water						
Density / Viscosity	////						
Max. Recorded Temp.	////						
Estimated Cement Top	2376'						
Time Well Ready	8:00AM						
Time Logger on Bottom	8:15AM						
Equipment Number	T745						
Location	Hays, KS						
Recorded By	Justin LaBarge						
Witnessed By	Mr. Duane Eichman						
Borehole Record							
Run Number	Bit	From	To	Size	Weight	From	To
Tubing Record							
Casing Record	Size	Vgt/Ft	Top	Bottom			
Surface String	8 5/8"		0'	231'			
Prot. String							
Production String							
Liner							

<<< Fold Here >>>

All interpretations are opinions based on inferences from electrical or other measurements and we cannot and do not guarantee the accuracy or correctness of any interpretation, and we shall not, except in the case of gross or willful negligence on our part, be liable or responsible for any loss, costs, damages, or expenses incurred or sustained by anyone resulting from any interpretation made by any of our officers, agents or employees. These interpretations are also subject to our general terms and conditions set out in our current Price Schedule.

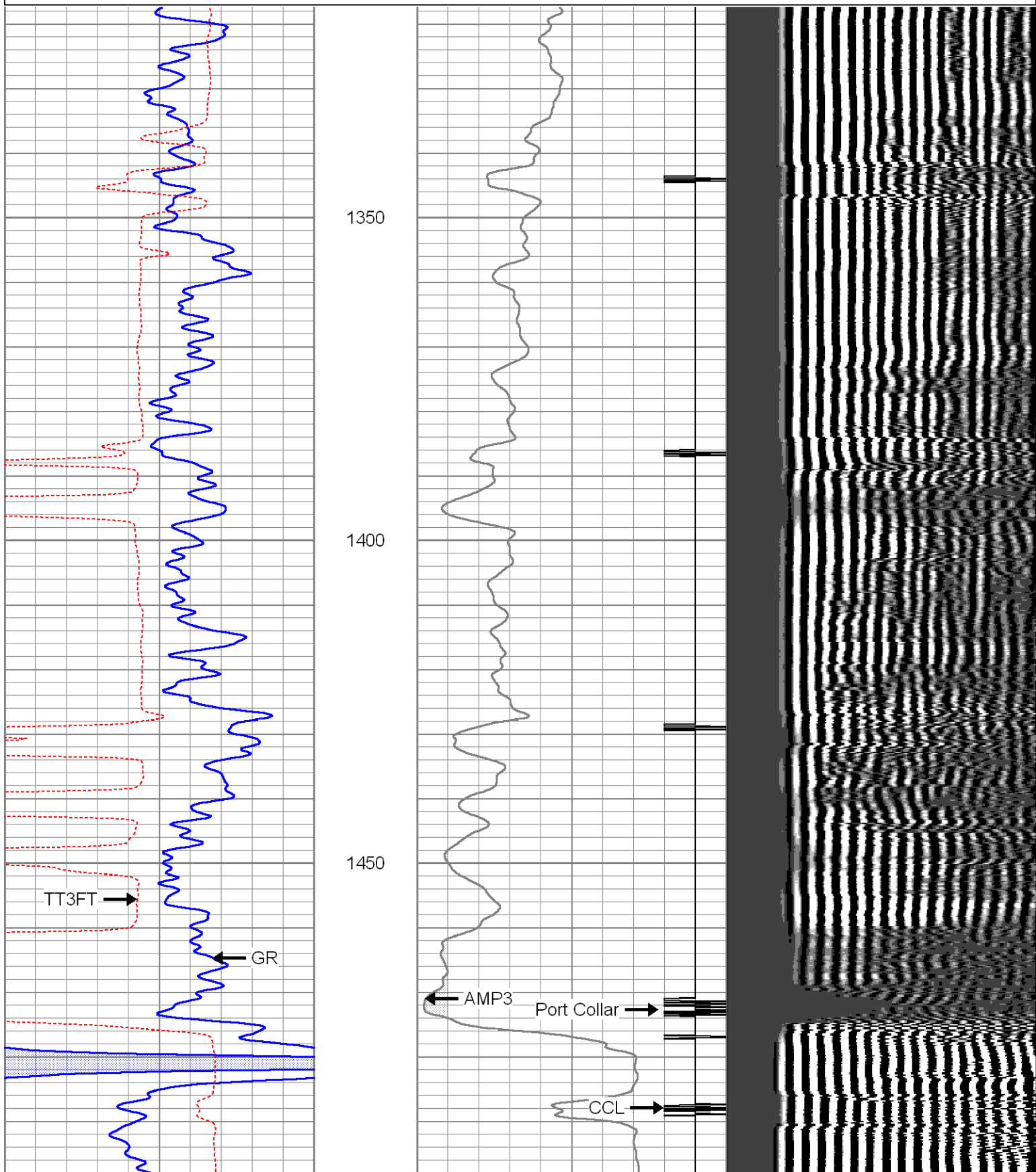
Comments

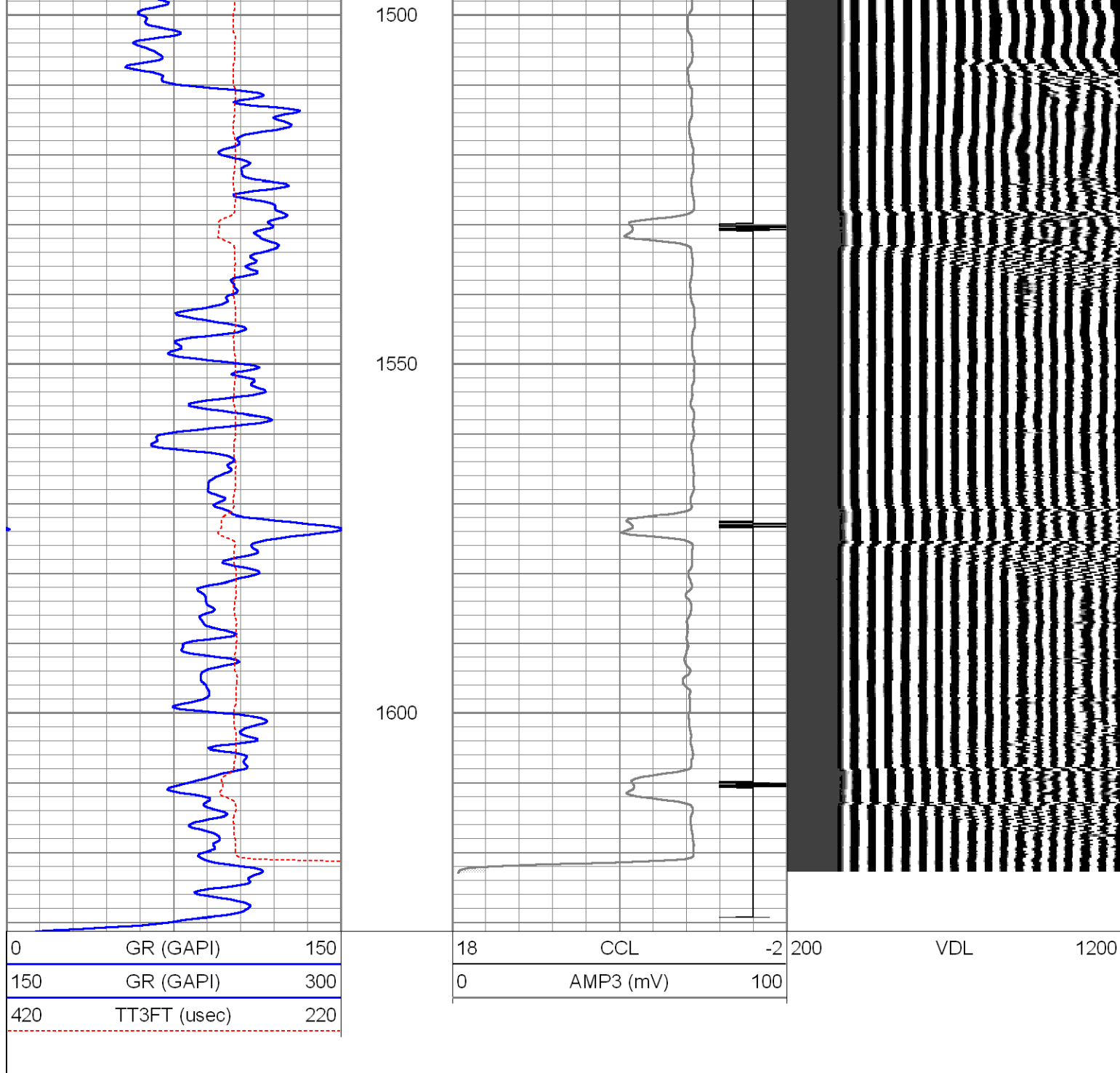
Marker Joint (3253'-3274')

Thank You For Using The Perforators LLC
 Hays, KS (785-621-4604)

Database File: jofsutleya#1cbl.db
 Dataset Pathname: pass4
 Presentation Format: cbl
 Dataset Creation: Thu Jan 05 09:32:43 2012 by Log Std Casedhole 10121
 Charted by: Depth in Feet scaled 1:240

0	GR (GAPI)	150	18	CCL	-2	200	VDL	1200
150	GR (GAPI)	300	0	AMP3 (mV)	100			
420	TT3FT (usec)	220						

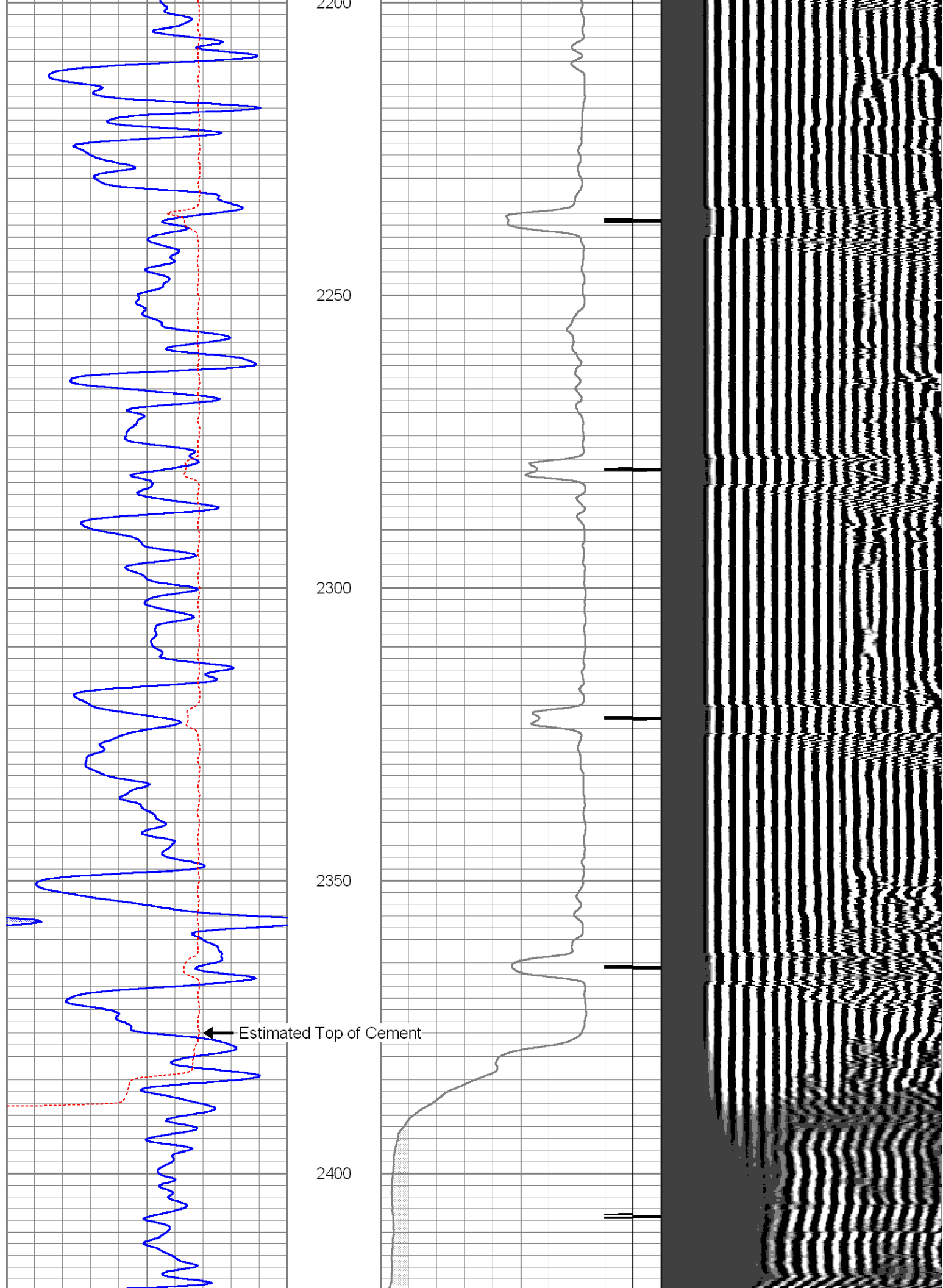


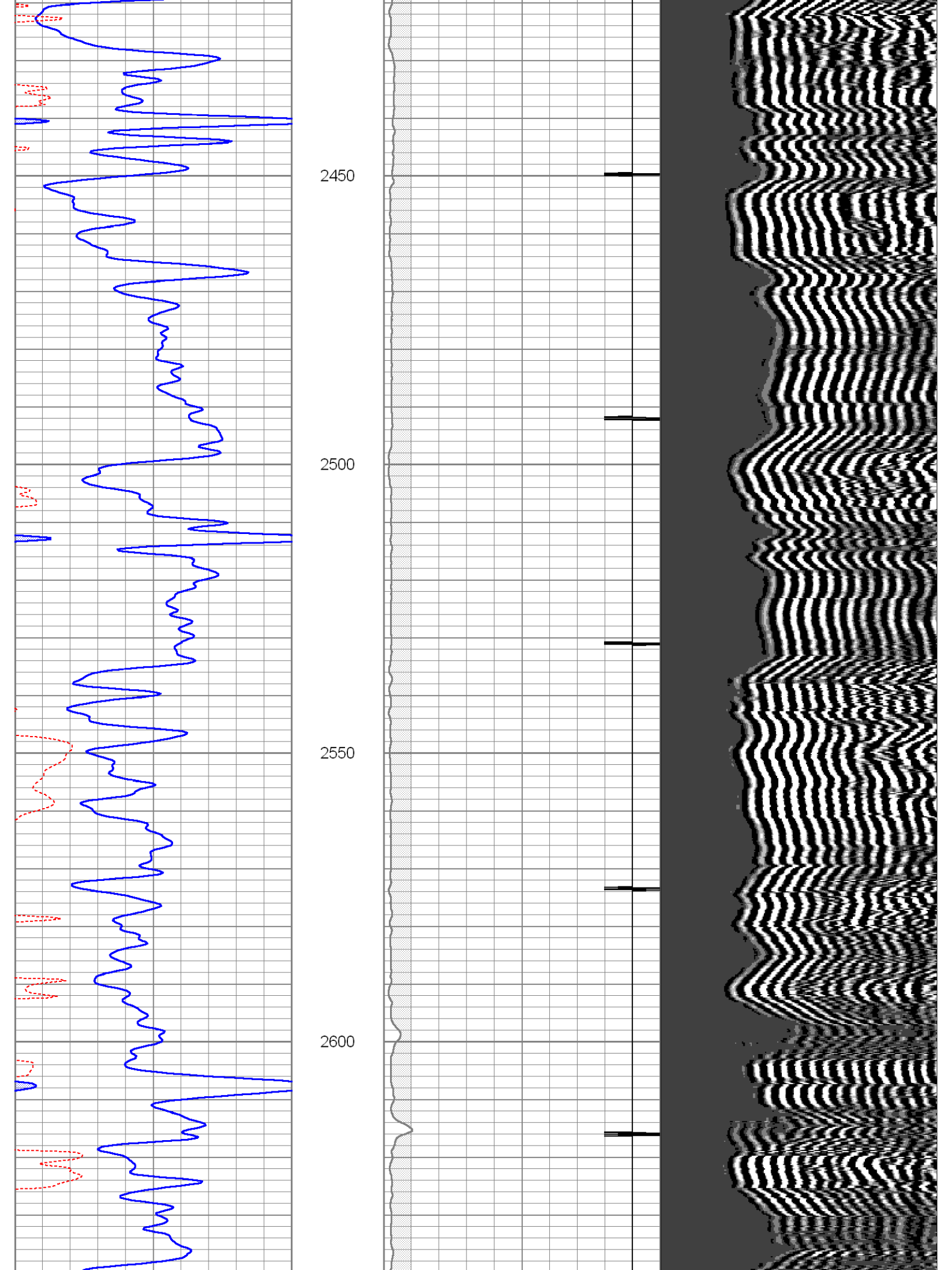


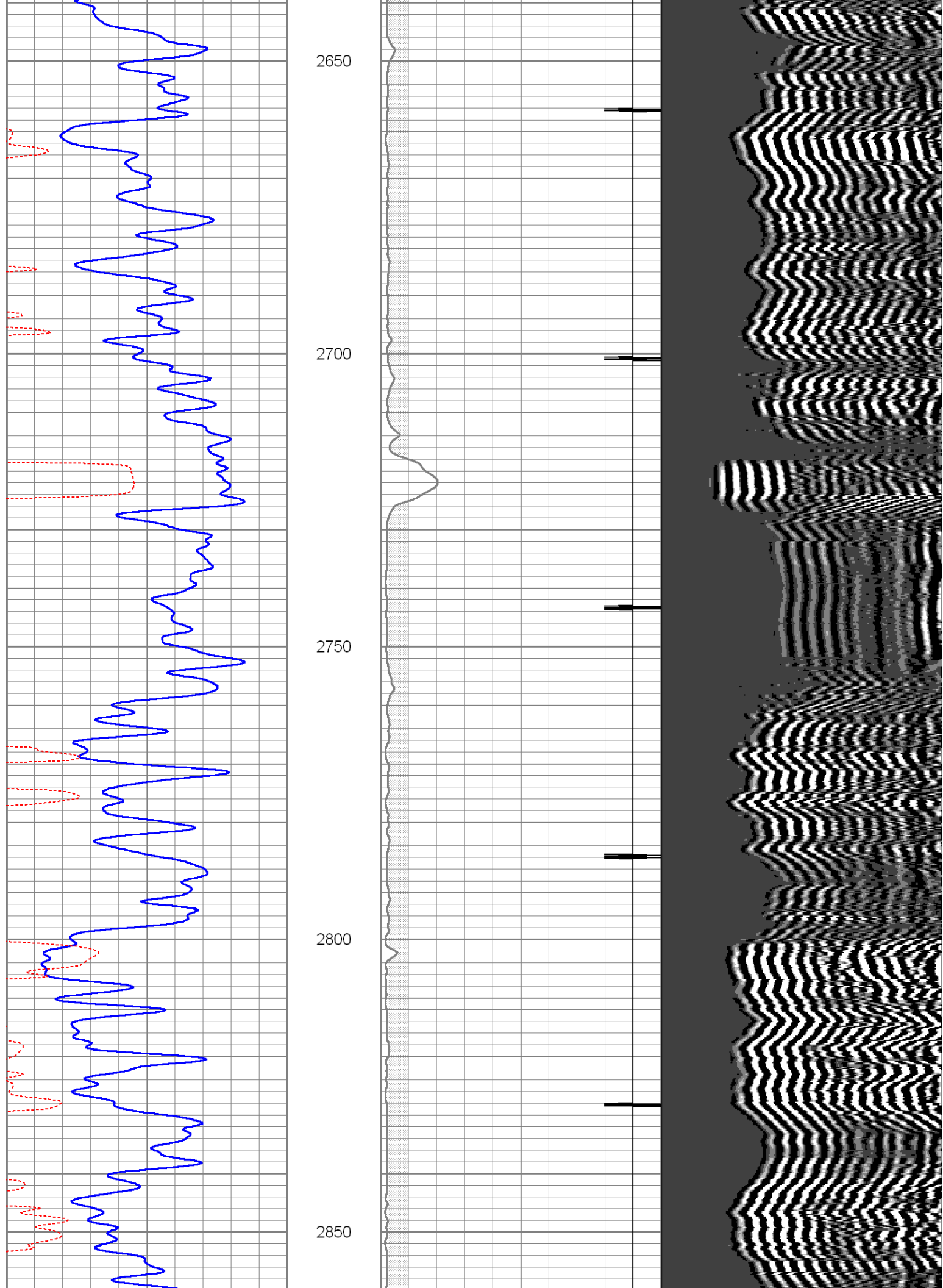
Main Pass

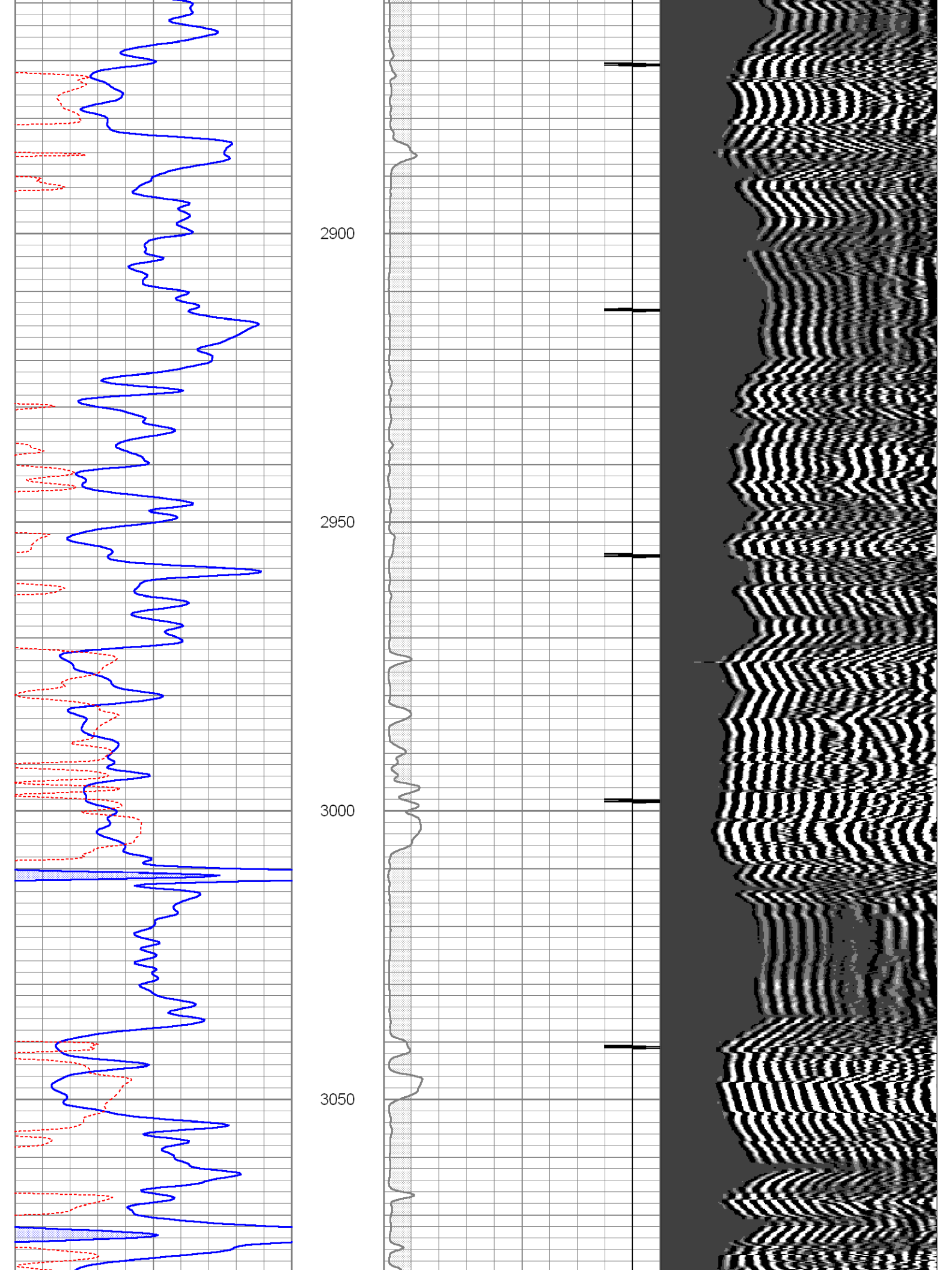
Database File: jofsutleya#1cbl.db
 Dataset Pathname: pass3
 Presentation Format: cbl
 Dataset Creation: Thu Jan 05 08:43:44 2012 by Log Std Casedhole 10121
 Charted by: Depth in Feet scaled 1:240

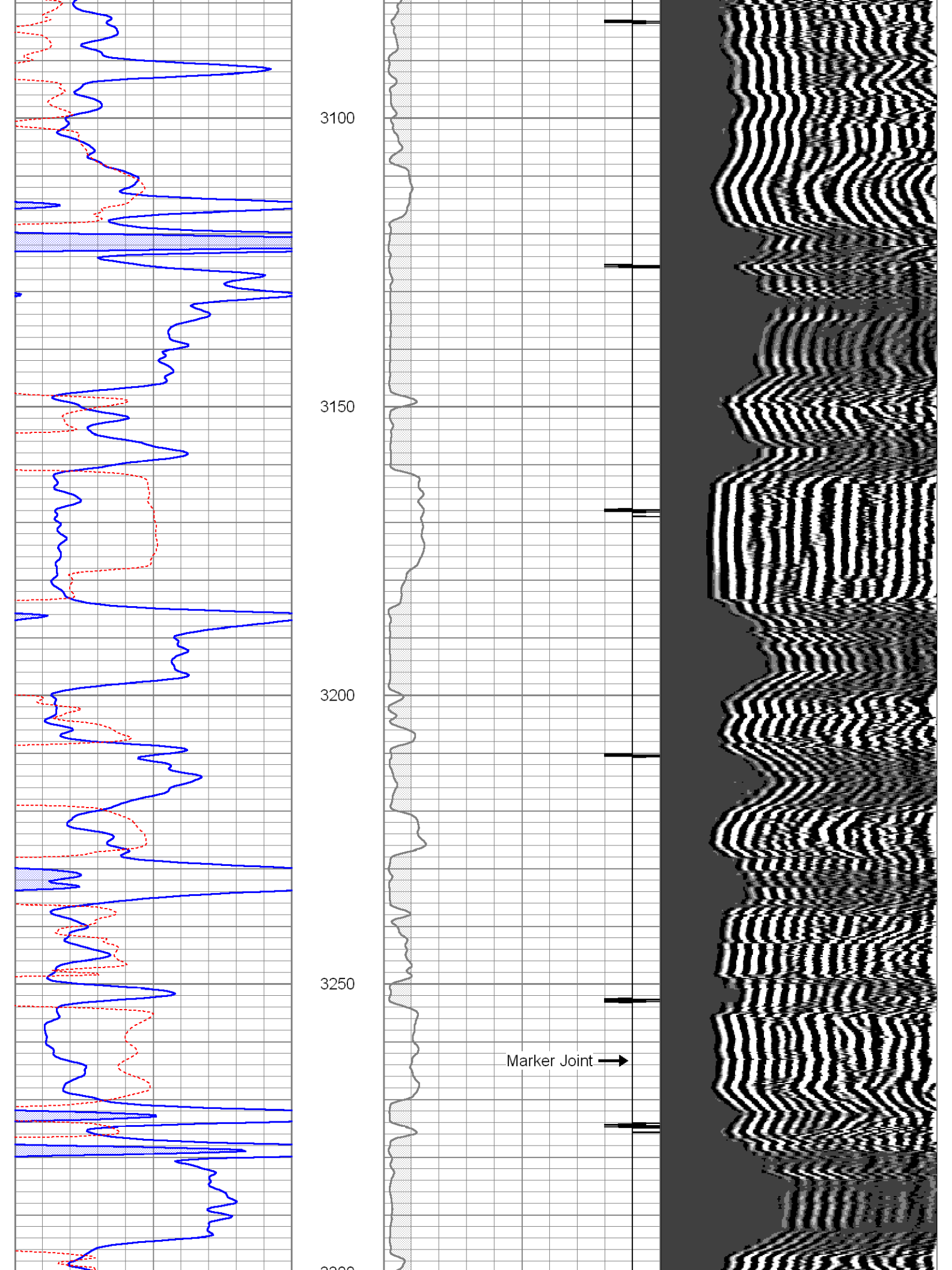
0	GR (GAPI)	150	18	CCL	-2	200	VDL	1200
150	GR (GAPI)	300	0	AMP3 (mV)	100			
420	TT3FT (usec)	220						

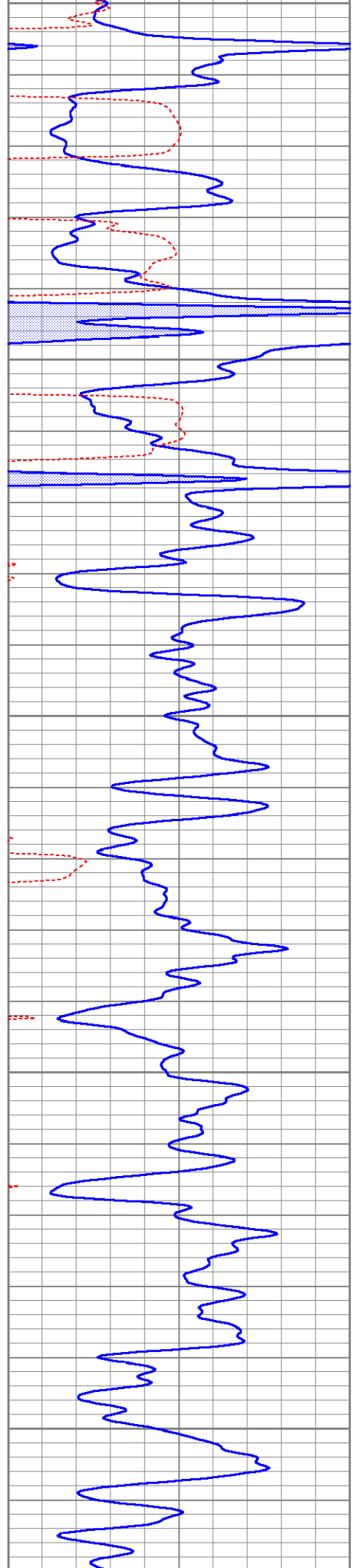




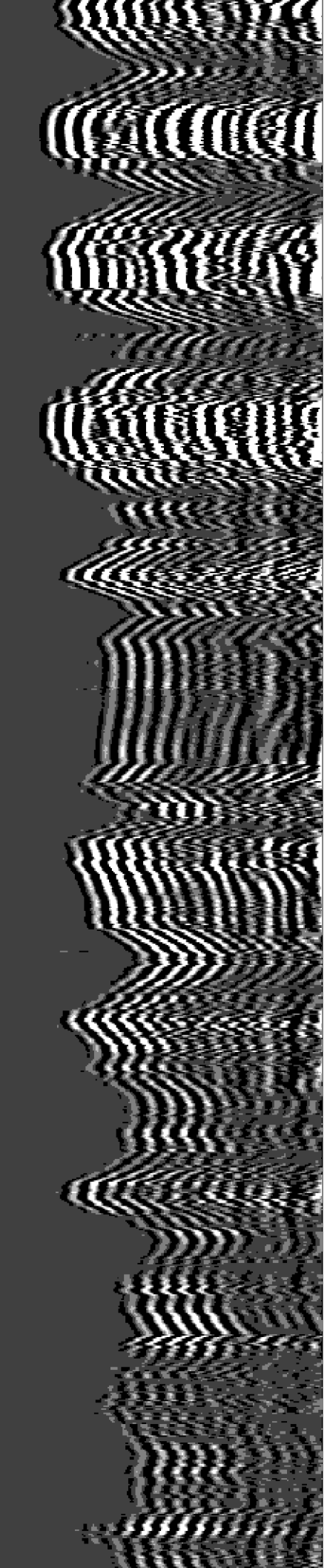
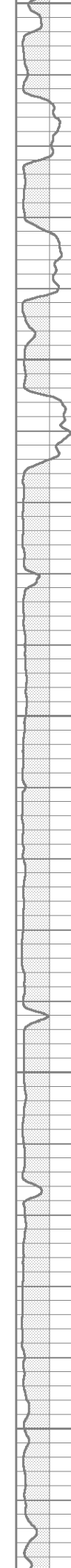


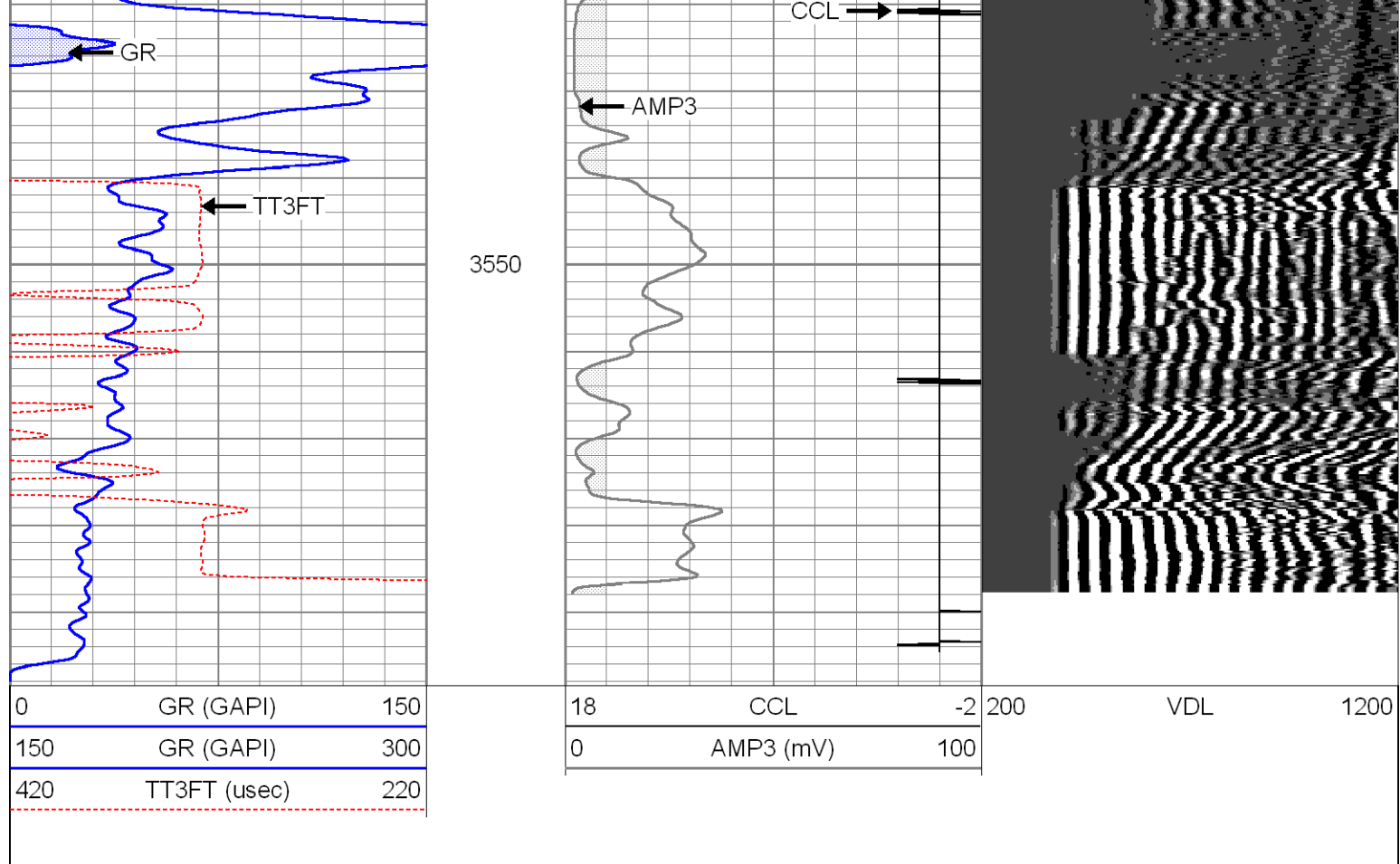






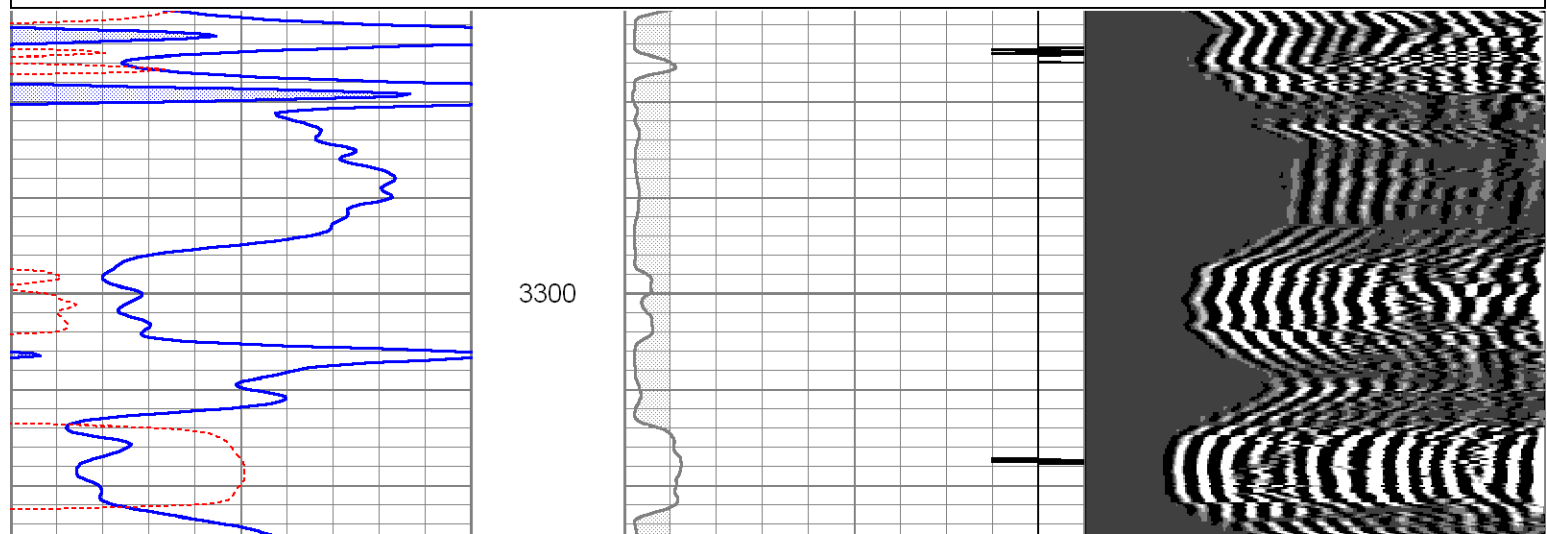
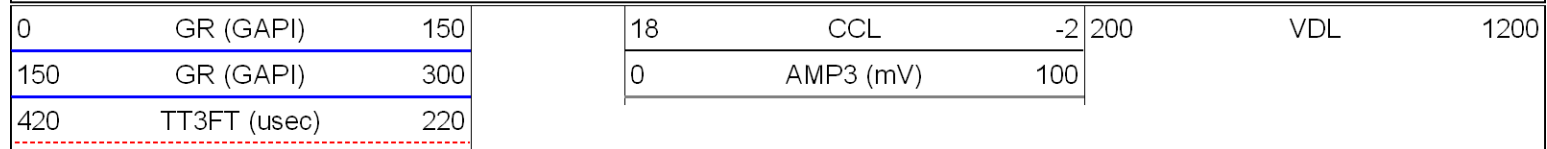
3300
3350
3400
3450
3500

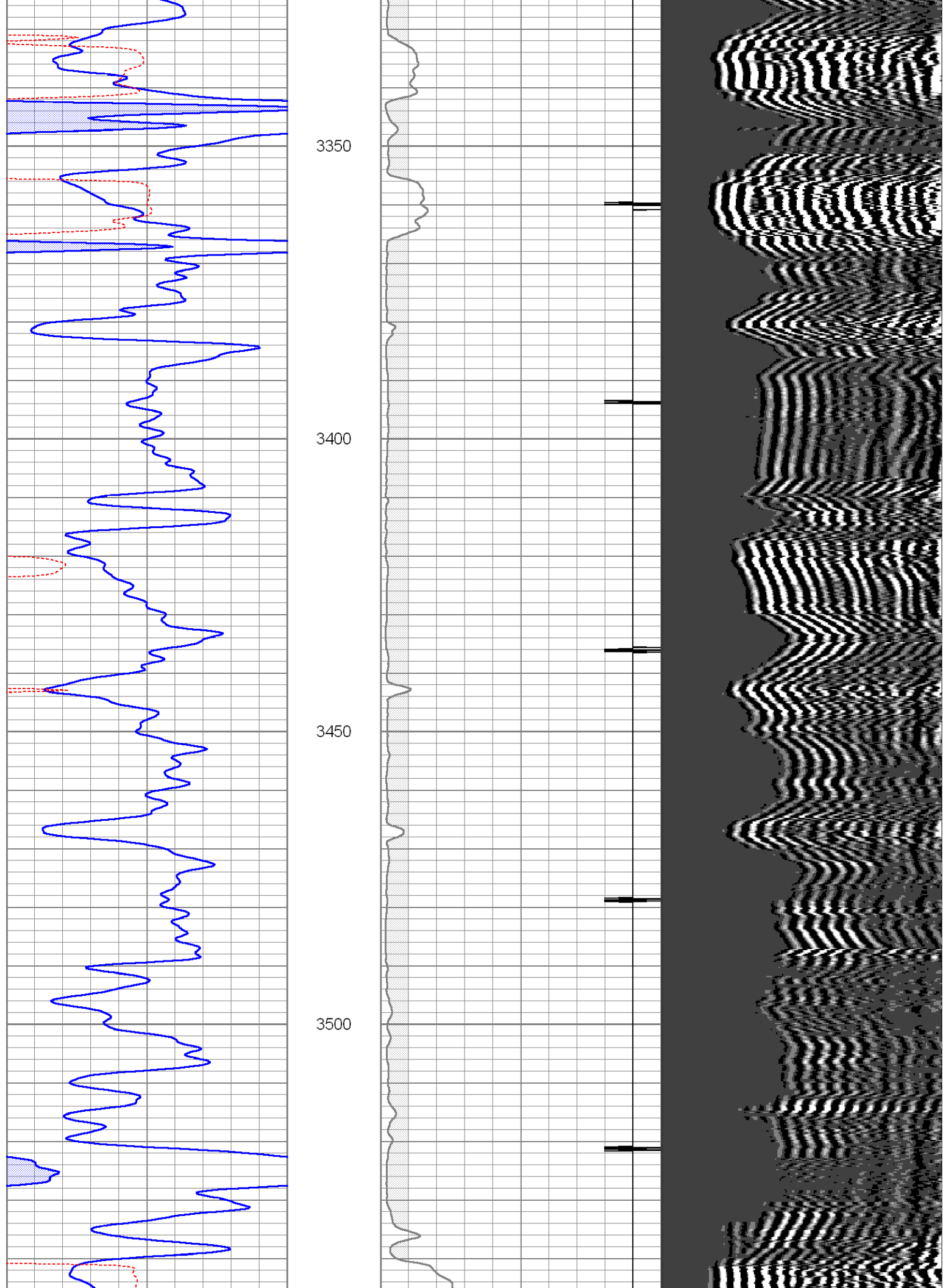




Repeat Section

Database File: jofsutleya#1cbl.db
 Dataset Pathname: pass2
 Presentation Format: cbl
 Dataset Creation: Thu Jan 05 08:30:29 2012 by Log Std Casedhole 10121
 Charted by: Depth in Feet scaled 1:240





				2.94	2.75	10.00
WVF3	11.69					
WVF5	10.69					
CCL	3.67					
GR	2.30					

Dataset: jofsutleya#1cbl.db: field/well/run1/pass3
 Total Length: 19.89 ft
 Total Weight: 175.00 lb
 O.D.: 2.75 in