

Company	John O Farmer Inc.	Location:	1920 th F.W.L. & 740 th F.W.L.	AP# :	15 147 20651	Other Services	
Well	Sutley A #1	Field	Wildcat	County	Phillips	State	Kansas
Log Measured From	Permanent Datum	Log Measured From	Ground Level	Elevation	1937	Other Services	DNL
Drilling Measured From	KB	Ground Level	KB 5' AGL	Elevation	1937	Other Services	DIL
Date	12-11-11	Run Number	Two	Depth Driller	3600	Bottom Logger	3699
Top Log Interval	2760'	Bottom Logger Interval	2760'	Casing Driller	231	Casing Logger	778'
BR Size	7 7/8"	Chemical Mud		Density / Viscosity	9.2/45	API / Fluid Loss	10.5/8
Type Fluid in Hole		Source of Sample	17 @ 5500ft	Run @ Meas. Temp	13.7 @ 5500ft	Source of Fluid / Filter	27 @ 5500ft
		Run @ Meas. Temp	13.7 @ 5500ft	Time Circulation Stopped	3:00 a.m.	Time Logger on Bottom	8:30 a.m.
		Run @ BHT	1.0 @ 10650ft	Maximum Recorded Temperature	106 degf	Equipment Number	TD45
		Location	Hays, KS	Recorded By	L. Smith	MR Handy/Kilian	

<<< Fold Here >>>

All interpretations are opinions based on inferences from electrical or other measurements and we cannot and do not guarantee the accuracy or correctness of any interpretation, and we shall not, except in the case of gross or willful negligence on our part, be liable or responsible for any loss, costs, damages, or expenses incurred or sustained by anyone resulting from any interpretation made by any of our officers, agents or employees. These interpretations are also subject to our general terms and conditions set out in our current Price Schedule.

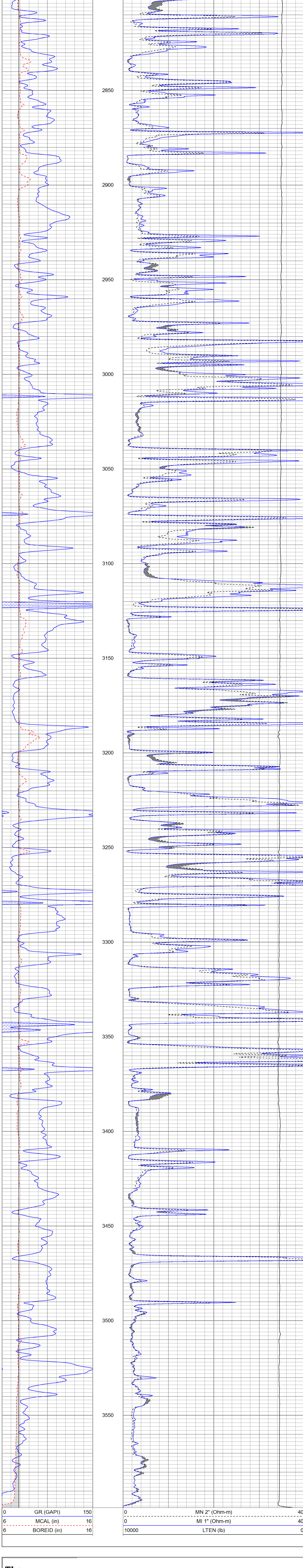
Comments

Hyw 9 west of Glade Ks., N on 400 rd.

The Perforators LLC **Main Pass**

Database File: jofsutleya#1oh.db
 Dataset Pathname: pass4.1
 Presentation Format: kml
 Dataset Creation: Sun Dec 11 09:48:21 2011 by Calc Open-Cased 100827
 Charted by: Depth in Feet scaled 1:240

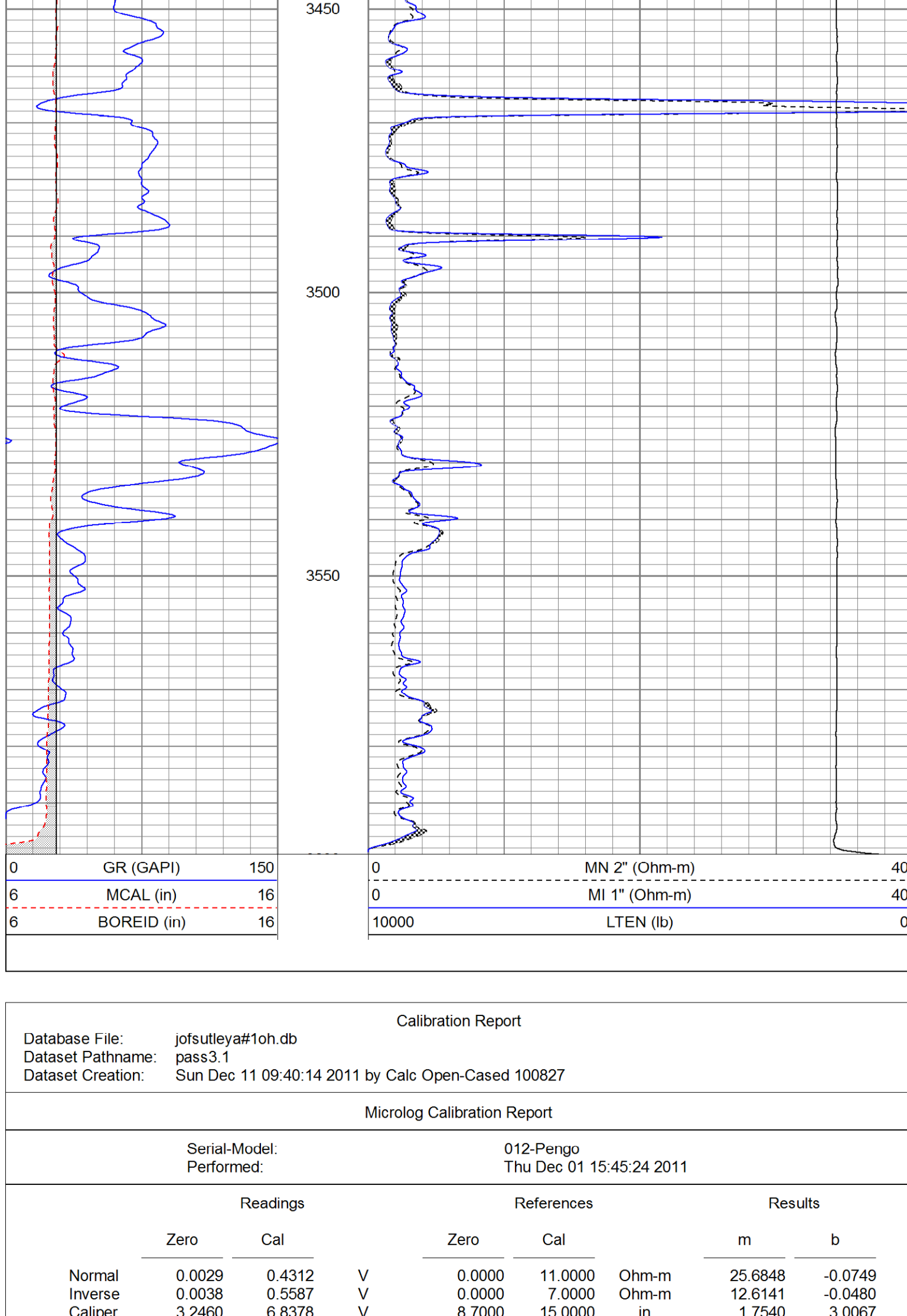
0	GR (GAPI)	150	0	MN 2" (Ohm-m)	40
6	MCAL (in)	16	0	MI 1" (Ohm-m)	40
6	BOREID (in)	16	10000	LTEN (lb)	0



The Perforators LLC **Main Pass**

Database File: jofsutleya#1oh.db
 Dataset Pathname: pass3.1
 Presentation Format: kml
 Dataset Creation: Sun Dec 11 09:40:14 2011 by Calc Open-Cased 100827
 Charted by: Depth in Feet scaled 1:240

0	GR (GAPI)	150	0	MN 2" (Ohm-m)	40
6	MCAL (in)	16	0	MI 1" (Ohm-m)	40
6	BOREID (in)	16	10000	LTEN (lb)	0



Calibration Report

Database File: jofsutleya#1oh.db
 Dataset Pathname: pass3.1
 Dataset Creation: Sun Dec 11 09:40:14 2011 by Calc Open-Cased 100827

Microlog Calibration Report

Serial-Model:	012-Pengo	Performed:	Thu Dec 01 15:45:24 2011
Readings		References	
Zero	Cal	Zero	Cal
Normal	0.0029	0.0000	11.0000
Inverse	0.0038	0.0000	7.0000
Calliper	3.2460	8.7000	15.0000
Results		Results	
		m	b
		25.6848	-0.0749
		12.6141	-0.0480
		1.7540	3.0067

Gamma Ray Calibration Report

Serial Number:	2000
Tool Model:	P2000
Performed:	Thu Dec 01 13:12:17 2011
Calibrator Value:	1.0 GAPI
Background Reading:	0.0 cps
Calibrator Reading:	1.0 cps
Sensitivity:	0.2200 GAPI/cps

Sensor	Offset (ft)	Schematic	Description	Len (ft)	OD (in)	Wt (lb)
GR	8.09		GR-P2000 (2000)	3.67	3.25	40.00
MN	1.30		ML-Pengo (012)	6.67	3.50	100.00
MI	1.30					
MCAL	1.30					

Dataset: jofsutleya#1oh.db: field/well/run1/pass3.1
 Total Length: 10.34 ft
 Total Weight: 140.00 lb
 O.D.: 3.50 in