



DIGITAL LOG (785) 625-3858

Microresistivity Log

15-135-25,304-00-00

API No.

Company **ARES Energy, LTD**
 Well **Wells No.13-13A**
 Field **Elmore Southwest**
 County **Ness** State **Kansas**

Location **NW/NW SE SW**
1042' FSL & 1394' FWL
 Sec: **13** Twp: **18S** Rge: **21W**

Other Services
 CNL/CDL
 DIL/BHCS

Permanent Datum **Ground Level** Elevation **2113**
 Log Measured From **Kelly Bushing** **8** Ft. Above Perm. Datum
 Drilling Measured From **Kelly Bushing**

Elevation
 K.B. 2121
 D.F. 2113
 G.L. 2113

Date	10/6/2011
Run Number	Two
Depth Driller	4390
Depth Logger	4389
Bottom Logged Interval	4388
Top Log Interval	3300
Casing Driller	8.625 @ 1341
Casing Logger	1342
Bit Size	7.875
Type Fluid in Hole	Chemical
Salinity,ppm CL	9.100
Density / Viscosity	9.2 49
pH / Fluid Loss	10.0 9.6
Source of Sample	Flowline
Rm @ Meas. Temp	.18 @ 75
Rmf @ Meas. Temp	.14 @ 75
Rmc @ Meas. Temp	.24 @ 75
Source of Rmf / Rmc	Charts
Rm @ BHT	.11 @ 120
Operating Rig Time	4 Hours
Max Rec. Temp. F	120
Equipment Number	17
Location	Hays
Recorded By	C. Desai
Witnessed By	Justin Carter

<<< Fold Here >>>

All interpretations are opinions based on inferences from electrical or other measurements and we cannot and do not guarantee the accuracy or correctness of any interpretation, and we shall not, except in the case of gross or willful negligence on our part, be liable or responsible for any loss, costs, damages, or expenses incurred or sustained by anyone resulting from any interpretation made by any of our officers, agents or employees. These interpretations are also subject to our general terms and conditions set out in our current Price Schedule.

Comments

Thank you for using Log-Tech, Inc.
 (785) 625-3858

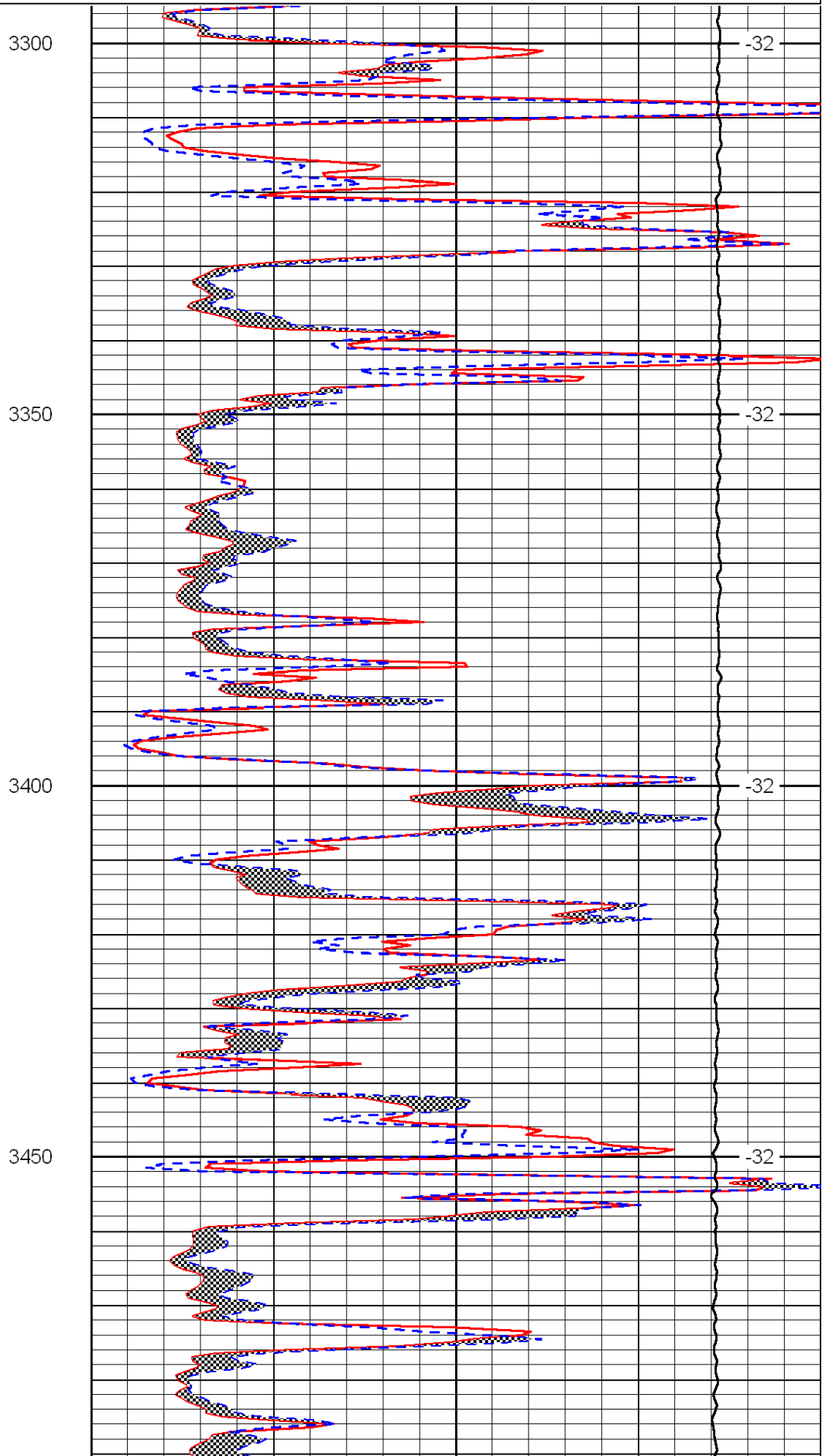
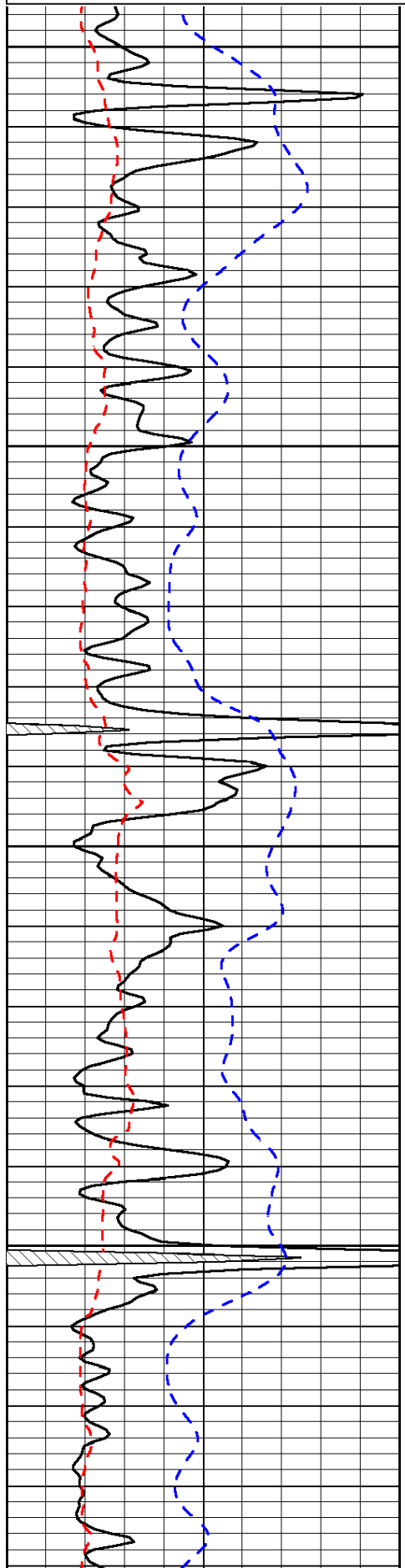
 Alexander KS,
 1 N, 2 W, N Into

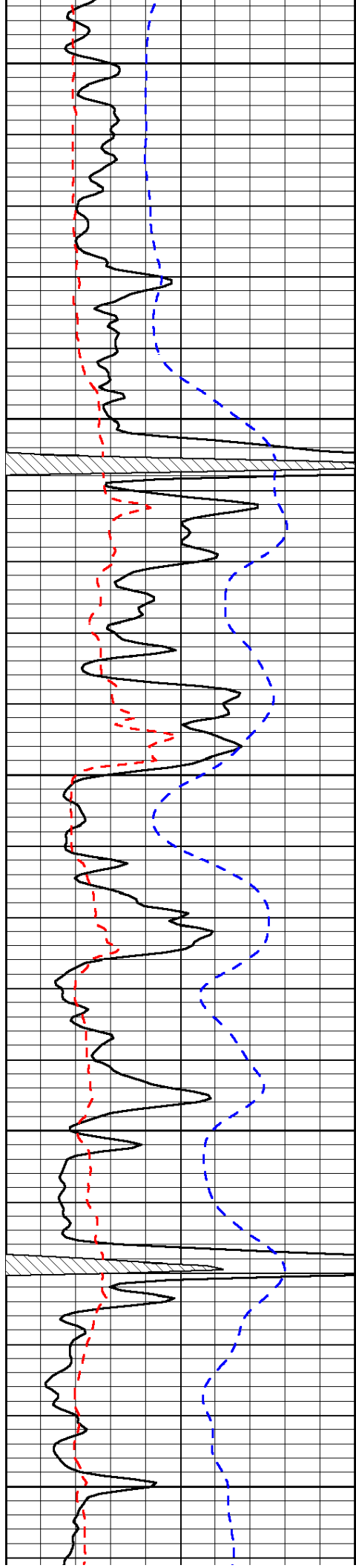
Database File: c:\warrior\data\ares_wells no.13-13a\areshd.db
 Dataset Pathname: dil/aresorig2
 Presentation Format: micro
 Dataset Creation: Thu Oct 06 20:29:45 2011
 Charted by: Depth in Feet scaled 1:240

0	Gamma Ray	150
6	Micro Log Caliper (GAPI)	16
-200	SP (mV)	0

0	Micro Inverse 1 X 1	40
0	Micro Normal 2"	40
15000	Line Weight	0

LSPD





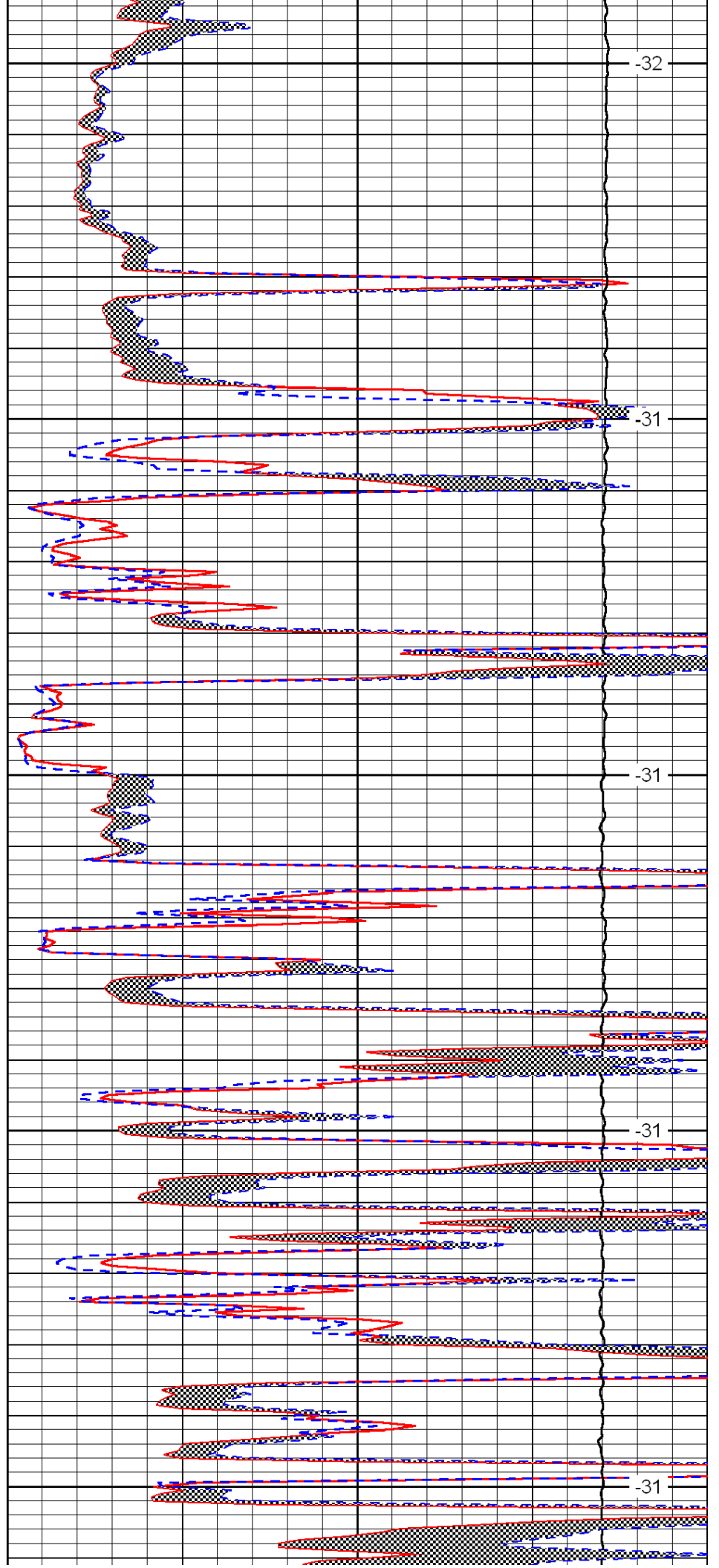
3500

3550

3600

3650

3700



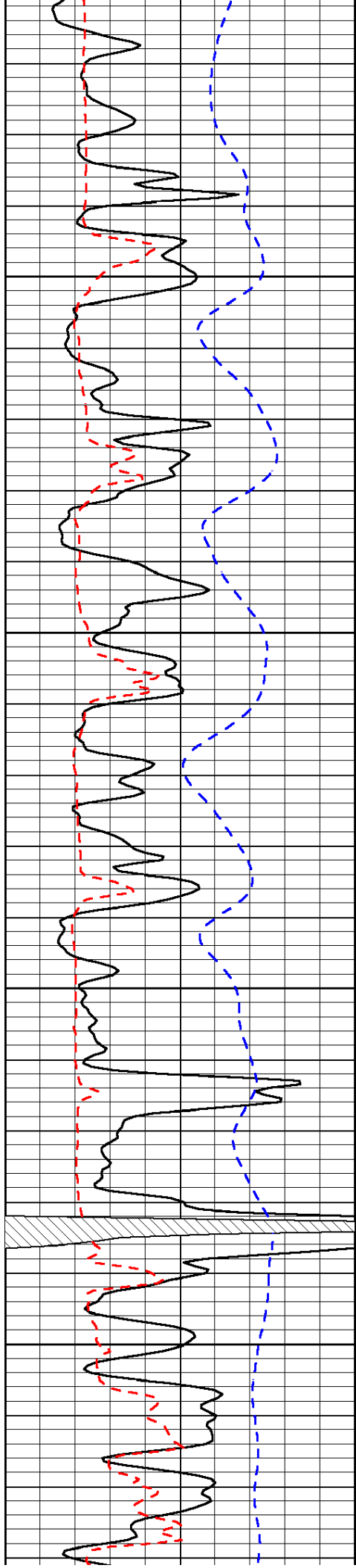
-32

-31

-31

-31

-31

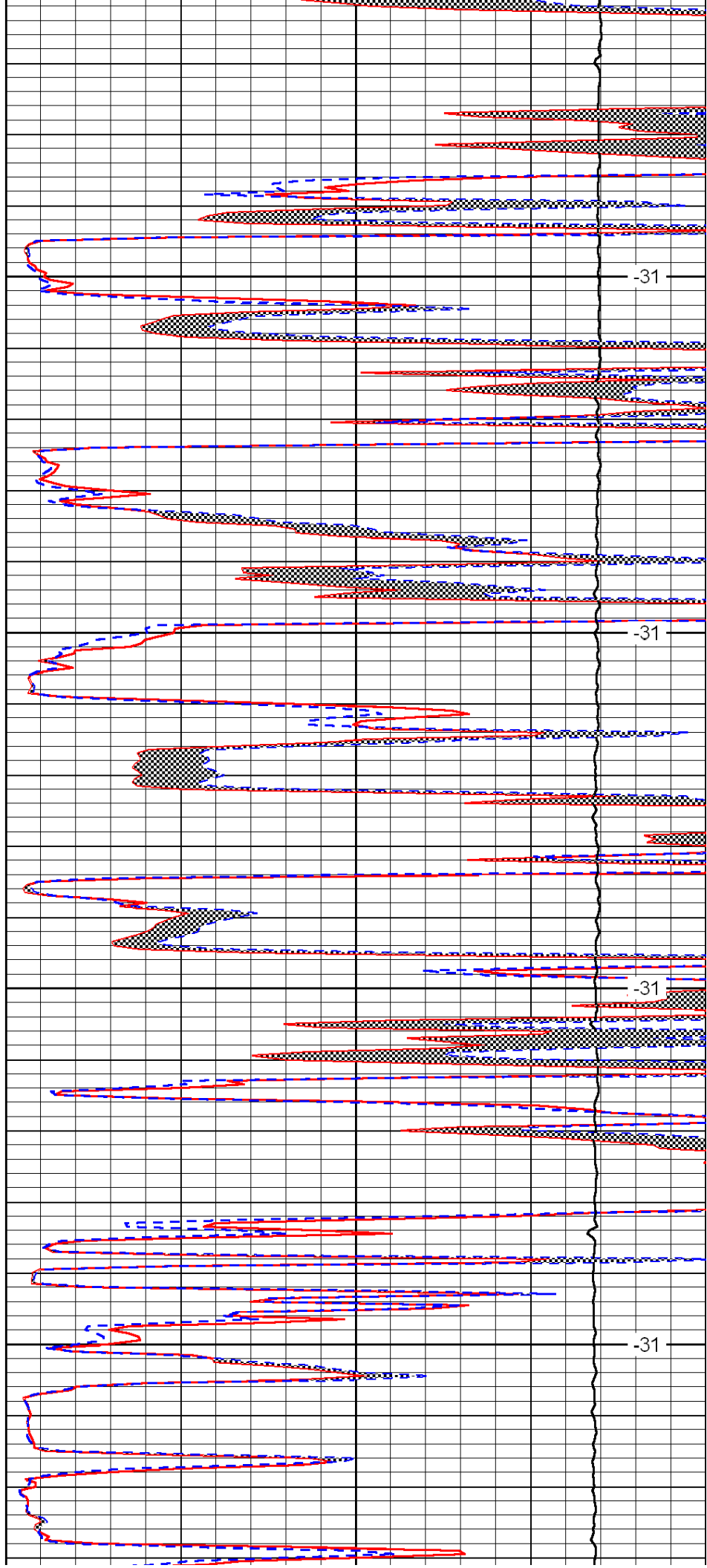


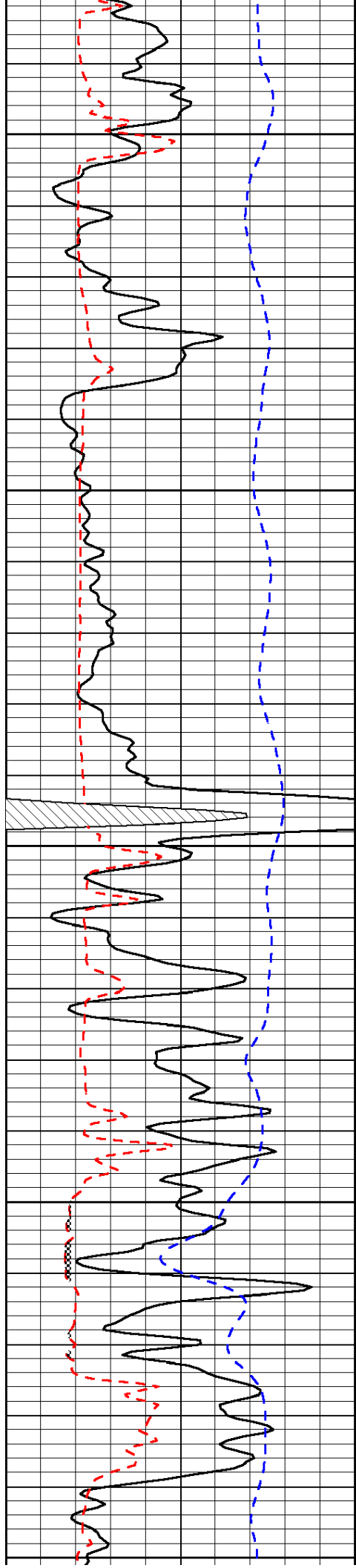
3750

3800

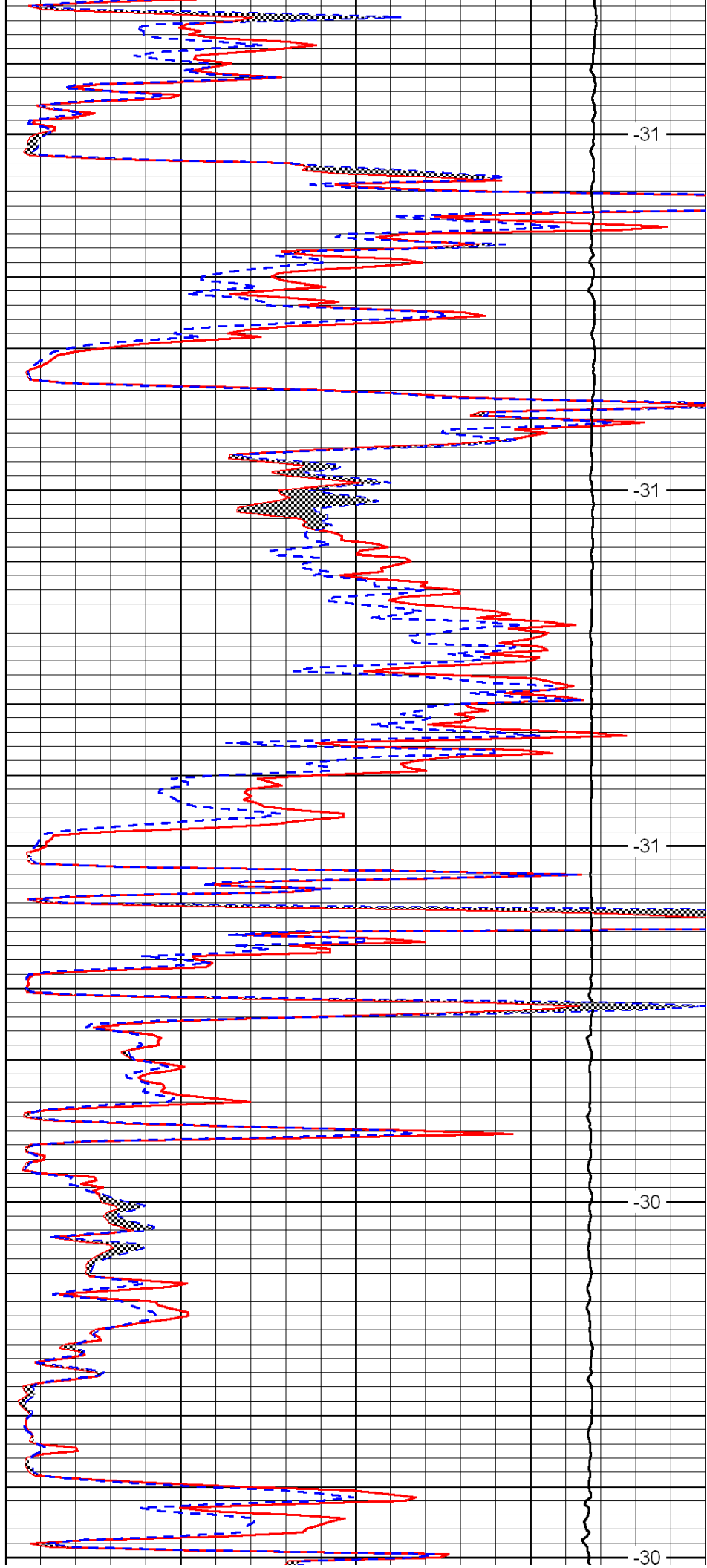
3850

3900

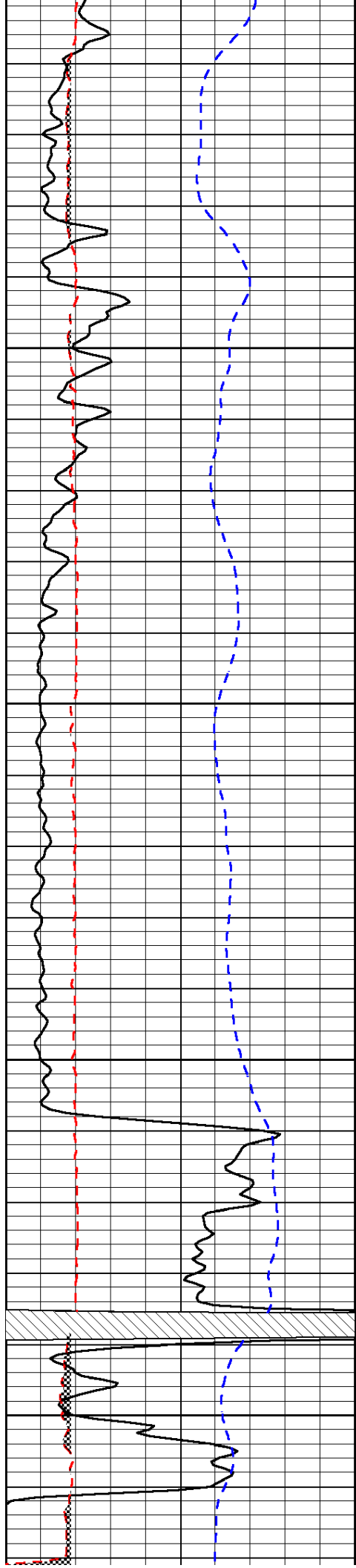




3950
4000
4050
4100
4150



-31
-31
-31
-30
-30

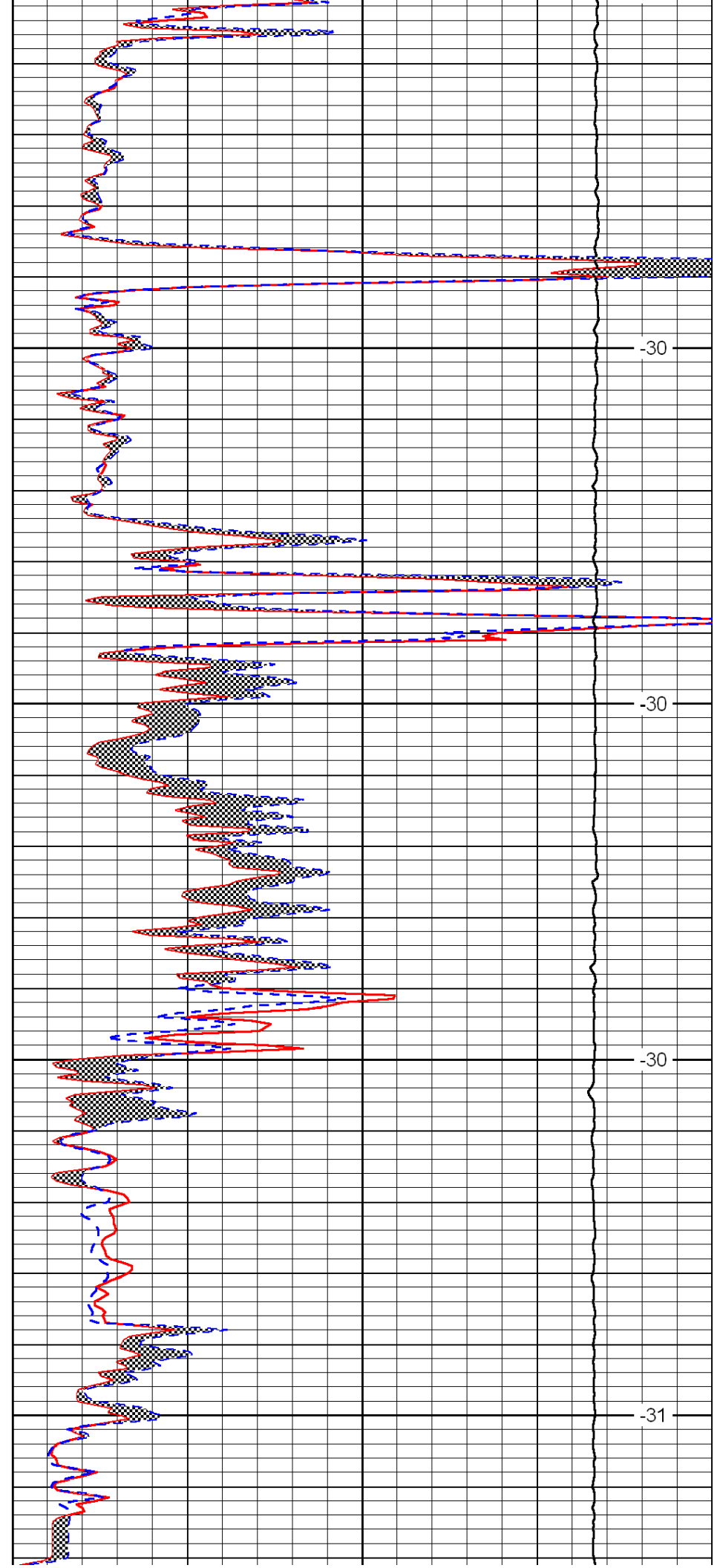


4200

4250

4300

4350

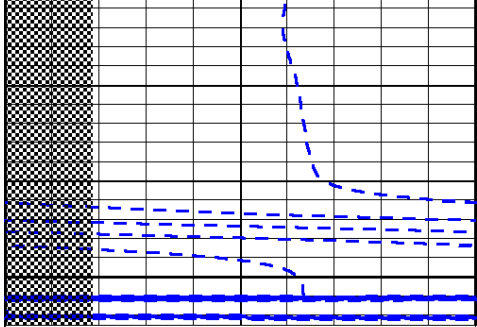


-30

-30

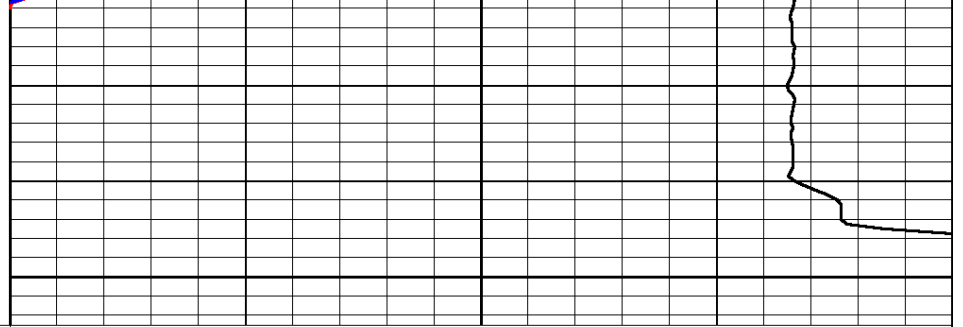
-30

-31



4400

0	Gamma Ray	150
6	Micro Log Caliper (GAPI)	16
-200	SP (mV)	0



0	Micro Inverse 1 X 1	40
0	Micro Normal 2''	40
15000	Line Weight	0

LSPD