



DIGITAL LOG (785) 625-3858

Dual Compensated Porosity Log

15-135-25,304-00-00

API No. 15-135-25,304-00-00

Company **ARES Energy, LTD**
 Well **Wells No.13-13A**
 Field **Elmore Southwest**
 County **Ness** State **Kansas**

Location **NW/NW SE SW**
1042' FSL & 1394' FWL

Sec: **13** Twp: **18S** Rge: **21W**

Other Services
 DIL
 MEL/BHCS

Permanent Datum **Ground Level** Elevation **2113**
 Log Measured From **Kelly Bushing** **8** Ft. Above Perm. Datum
 Drilling Measured From **Kelly Bushing**

K.B. 2121
 D.F. 2113
 G.L. 2113

Date	10/6/2011					
Run Number	One					
Type Log	CNL / CDL					
Depth Driller	4390					
Depth Logger	4389					
Bottom Logged Interval	4368					
Top Logged Interval	3300					
Type Fluid In Hole	Chemical					
Salinity, PPM CL	9.100					
Density Level	9.2					
Max. Rec. Temp. F	F-ull					
Operating Rig Time	120					
Equipment -- Location	4 Hours					
Recorded By	17 Days					
Witnessed By	C. Desaire					
	Justin Carter					
Borehole Record			Casing Record			
Run No.	Bit	From	To	Size	Wgt.	To
1	12.25	00	1341	8.625	24#	1341
2	7.875	1341	4390			

<<< Fold Here >>>

All interpretations are opinions based on inferences from electrical or other measurements and we cannot and do not guarantee the accuracy or correctness of any interpretation, and we shall not, except in the case of gross or willful negligence on our part, be liable or responsible for any loss, costs, damages, or expenses incurred or sustained by anyone resulting from any interpretation made by any of our officers, agents or employees. These interpretations are also subject to our general terms and conditions set out in our current Price Schedule.

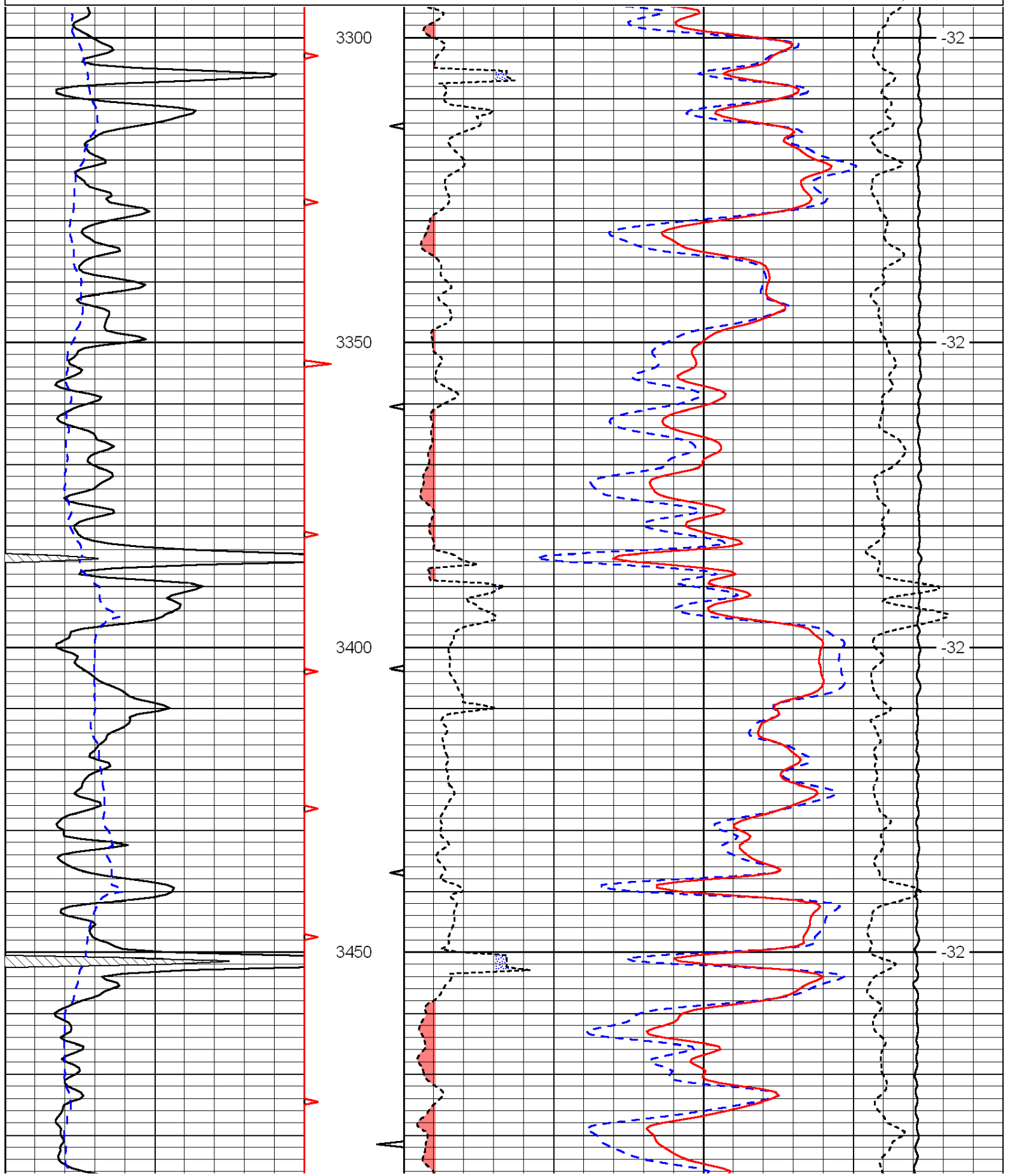
Comments

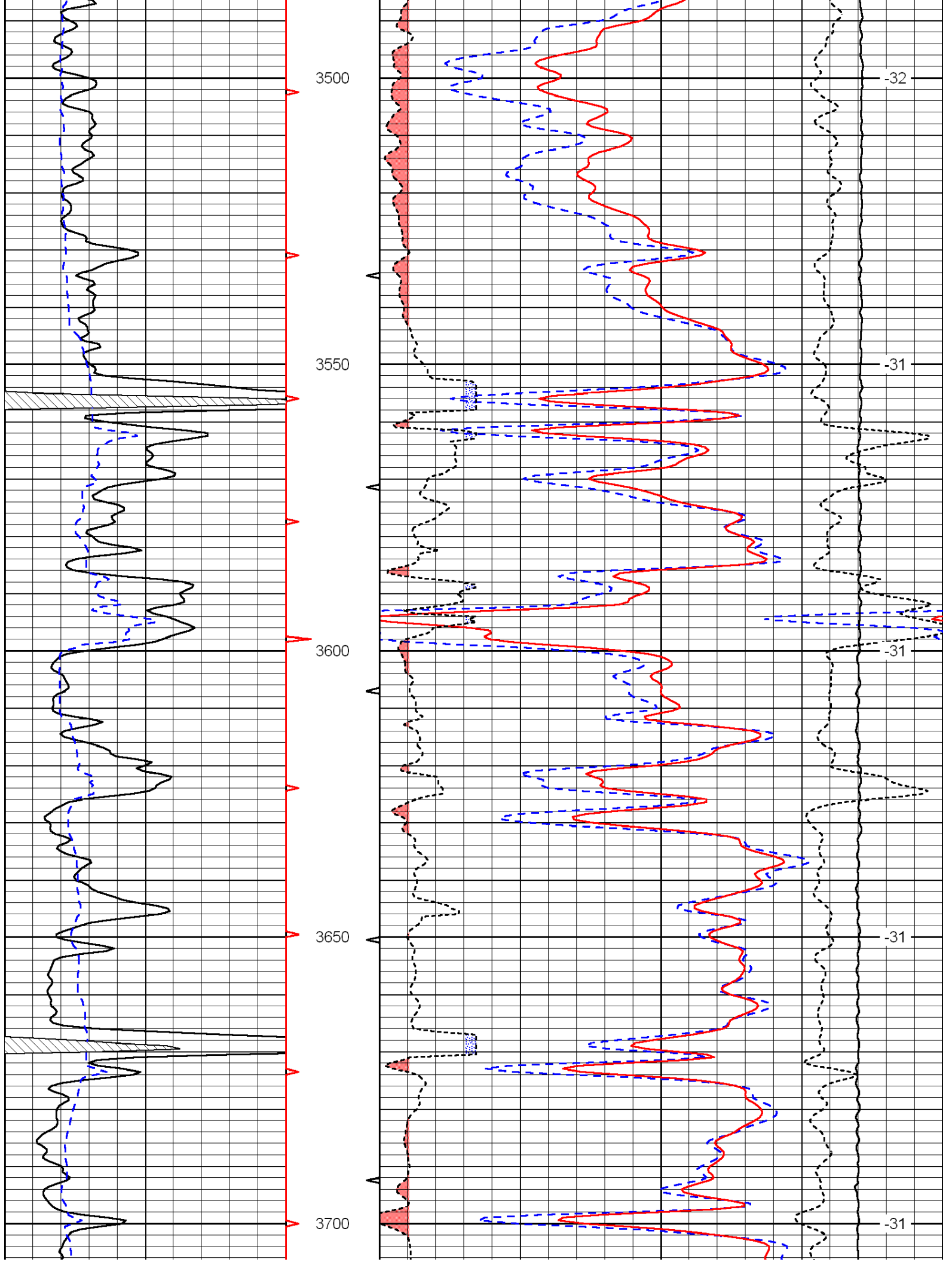
Thank you for using Log-Tech, Inc.
 (785) 625-3858

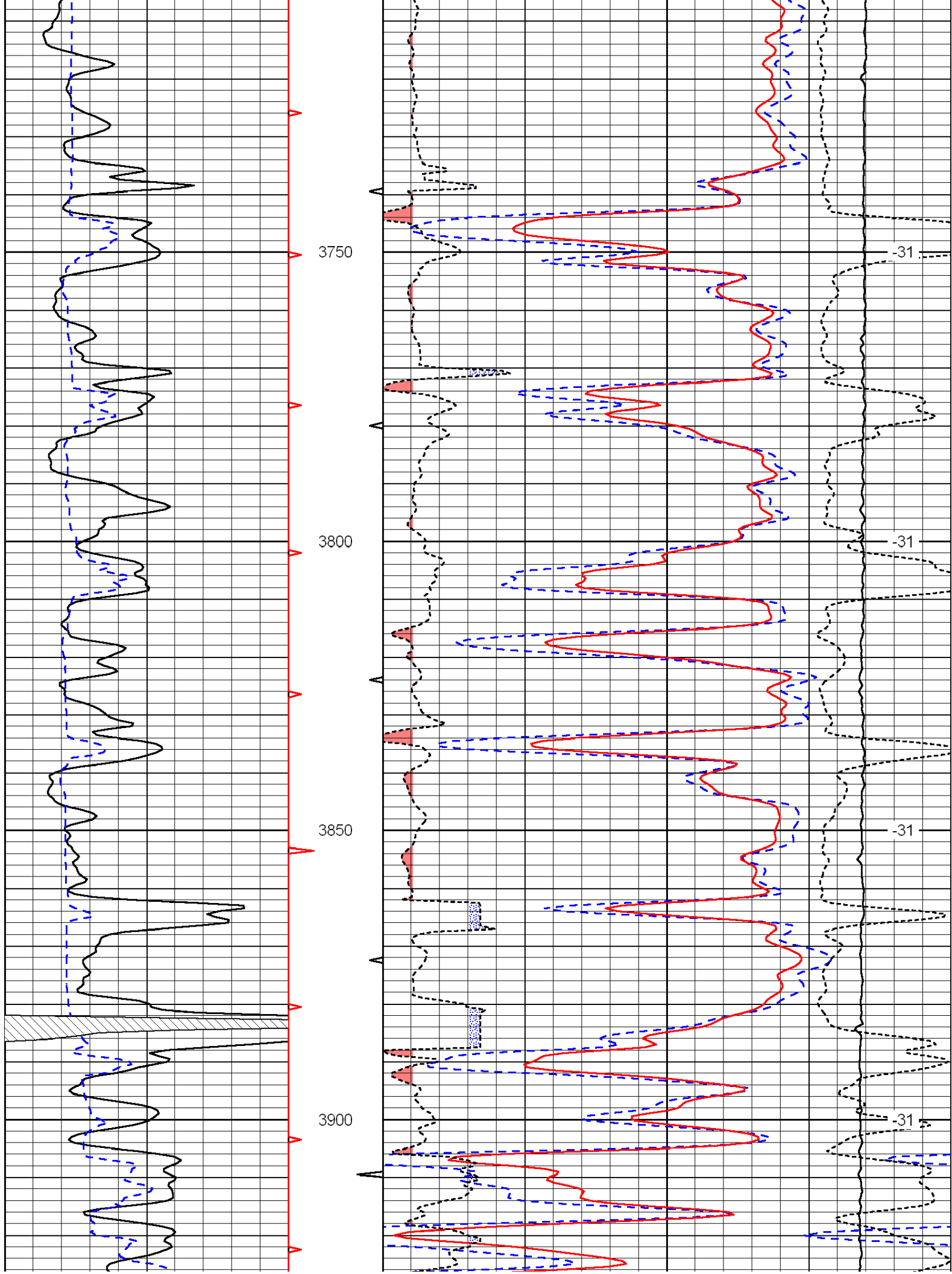
Alexander KS,
 1 N, 2 W, N Into

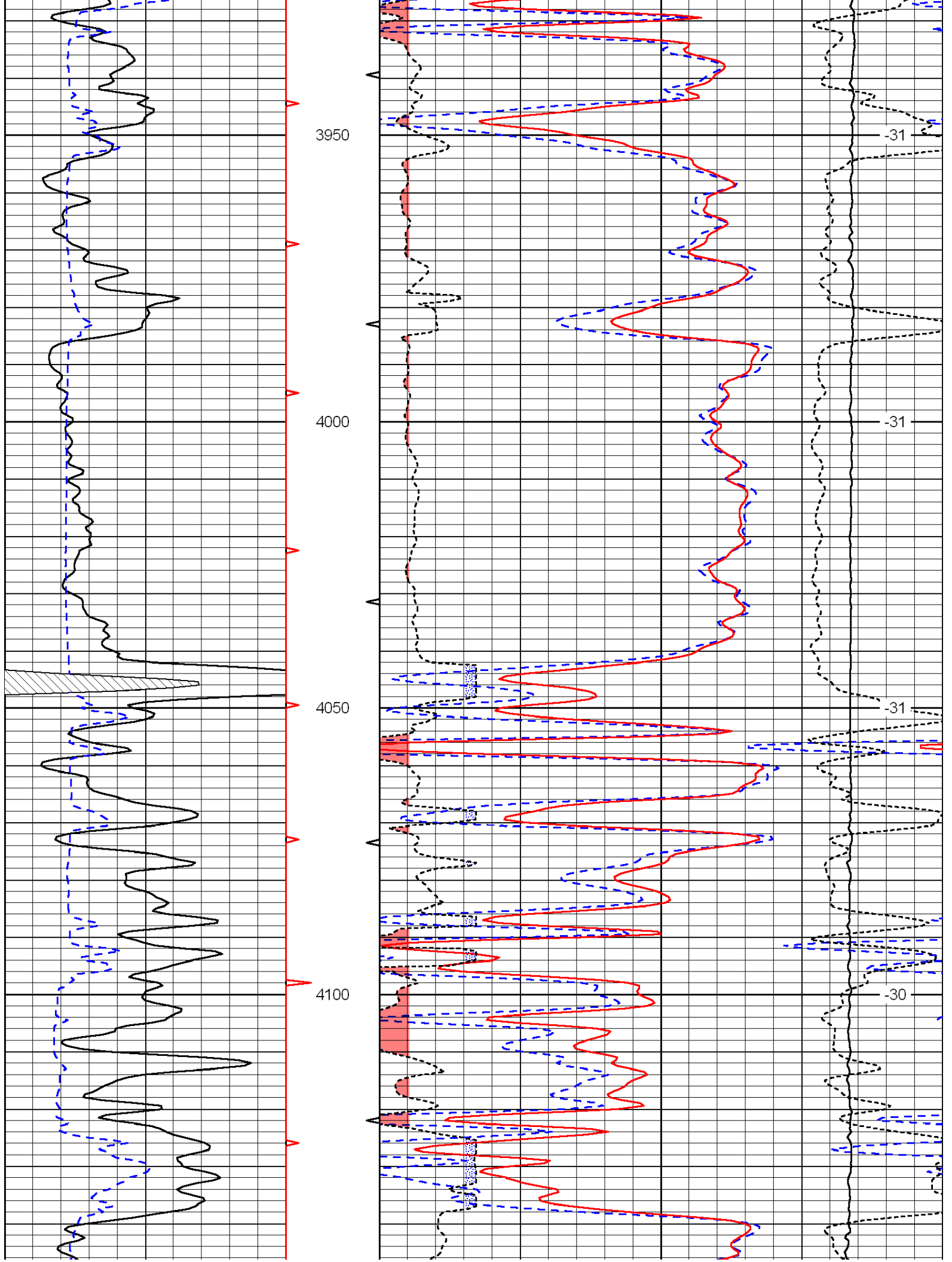
0	Gamma Ray	150
6	Caliper (GAPI)	16

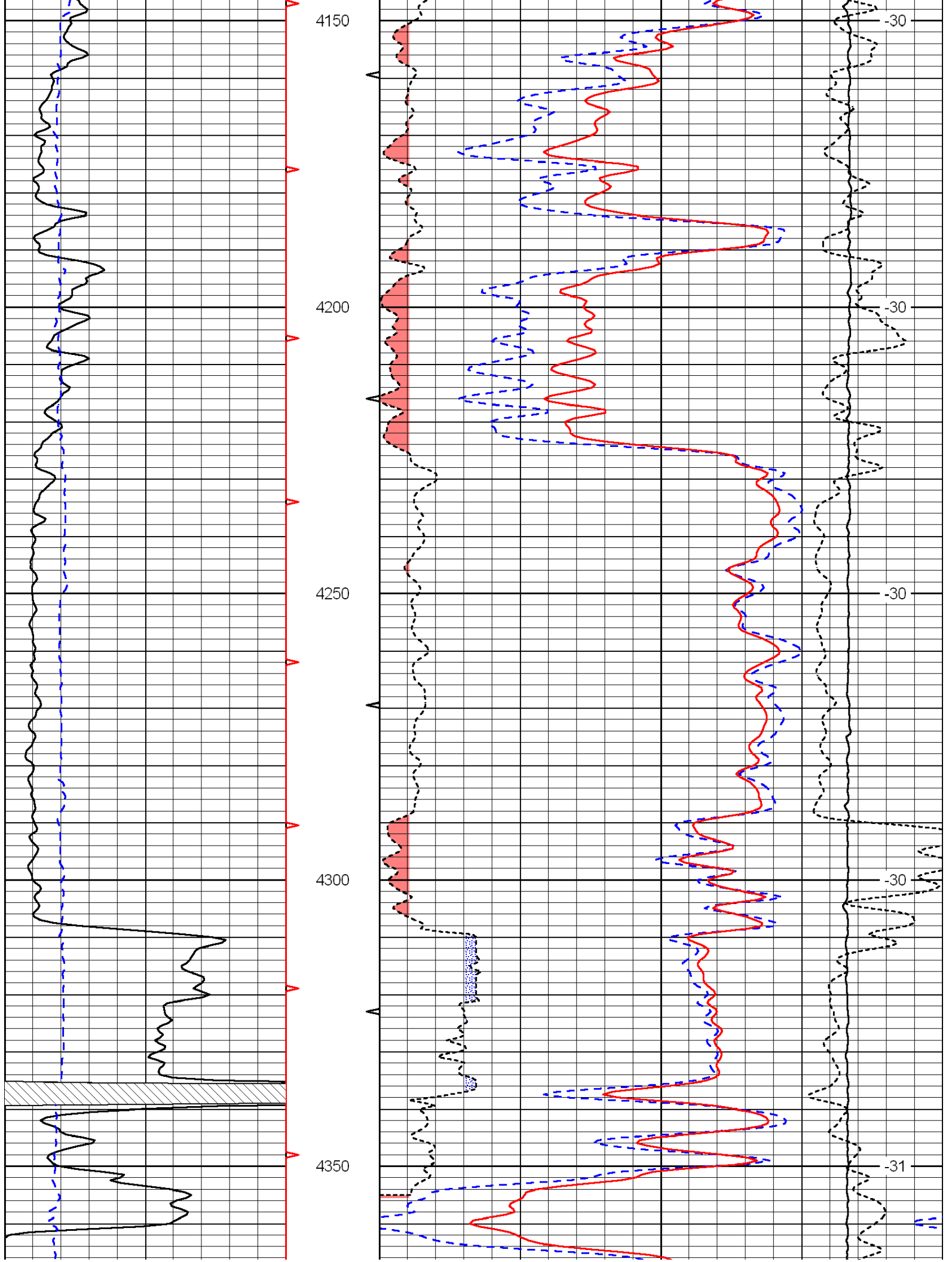
30	Compensated Density		-10
2	Bulk Density		3
15000	Line Tension		0
2.625	DGA	3.425	-0.25
Correction			0.25
LSPD			

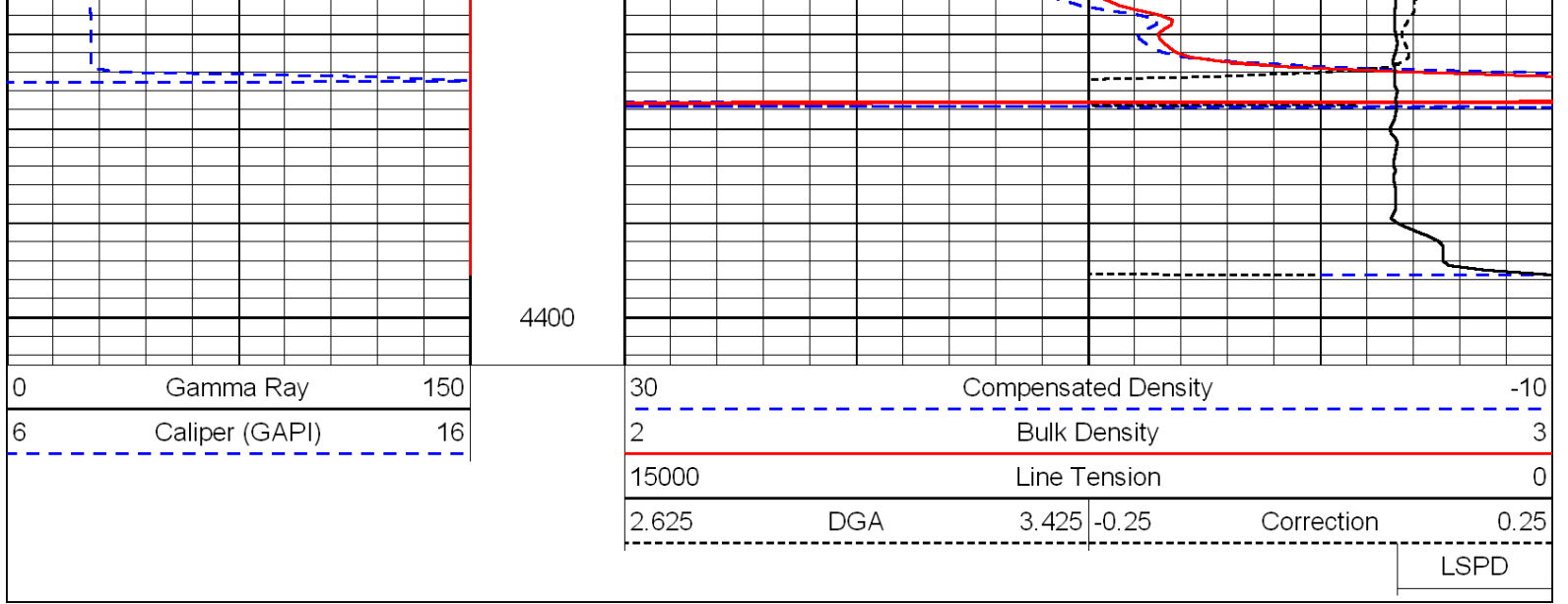












Database File: c:\warrior\data\ares_wells no.13-13a\areshd.db
 Dataset Pathname: dil/aresorig2
 Presentation Format: cndlspec
 Dataset Creation: Thu Oct 06 20:29:45 2011
 Charted by: Depth in Feet scaled 1:240

