



# Dual Induction Log

DIGITAL LOG (785) 625-3858

15-135-25,304-00-00

API No.	Company	ARES Energy, LTD
	Well	Wells No.13-13A
	Field	Elmore Southwest
	County	Ness
	State	Kansas
Location	NW/NW SE SW 1042' FSL & 1394' FWL	
Sec: 13	Twp: 18S	Rge: 21W
Other Services	CNL/CDL MEL/BHCS	
Elevation	K.B. 2121 D.F. 2113 G.L. 2113	

Permanent Datum	Ground Level	10/6/2011	Elevation 2113
Log Measured From	Kelly Bushing	One	
Drilling Measured From	Kelly Bushing	4390	
		4389	
		4388	
Bottom Logged Interval		1300	
Top Log Interval		8.625 @ 1341	
Casing Driller		1342	
Casing Logger		7.875	
Bit Size		Chemical	
Type Fluid in Hole		9.100	
Salinity,ppm CL		9.2	49
Density / Viscosity		10.0	9.6
pH / Fluid Loss		Flowline	
Source of Sample		.18 @ 75	
Rm @ Meas. Temp		.14 @ 75	
Rmf @ Meas. Temp		.24 @ 75	
Rmc @ Meas. Temp		Charts	
Source of Rmf / Rmc		.11 @ 120	
Rm @ BHT		4 Hours	
Operating Rig Time		120	
Max Rec. Temp. F		17	
Equipment Number		Hays	
Location		C. Desai	
Recorded By		Justin Carter	
Witnessed By			

<<< Fold Here >>>

All interpretations are opinions based on inferences from electrical or other measurements and we cannot and do not guarantee the accuracy or correctness of any interpretation, and we shall not, except in the case of gross or willful negligence on our part, be liable or responsible for any loss, costs, damages, or expenses incurred or sustained by anyone resulting from any interpretation made by any of our officers, agents or employees. These interpretations are also subject to our general terms and conditions set out in our current Price Schedule.

### Comments

Thank you for using Log-Tech, Inc.  
 (785) 625-3858  
  
 Alexander KS,  
 1 N, 2 W, N Into

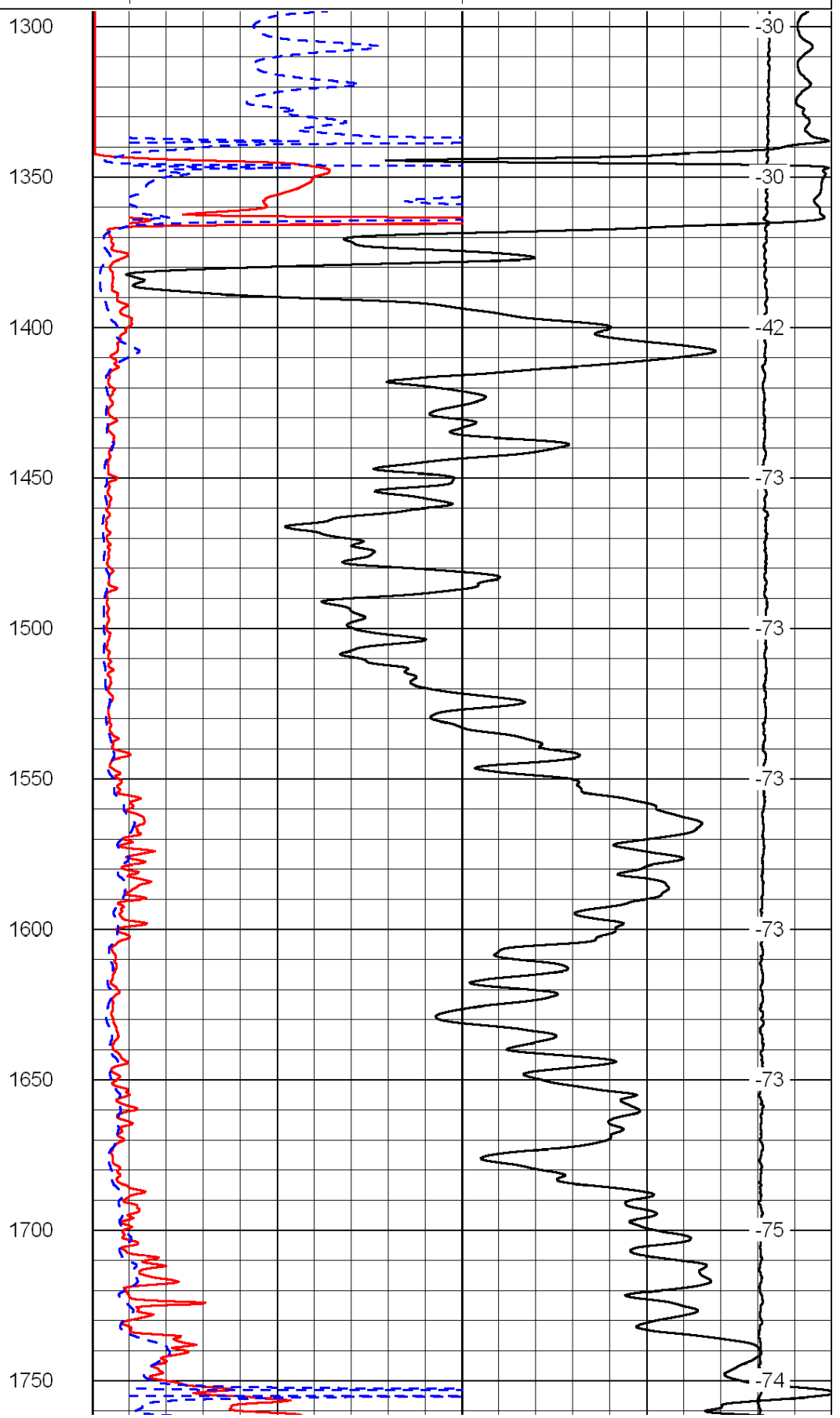
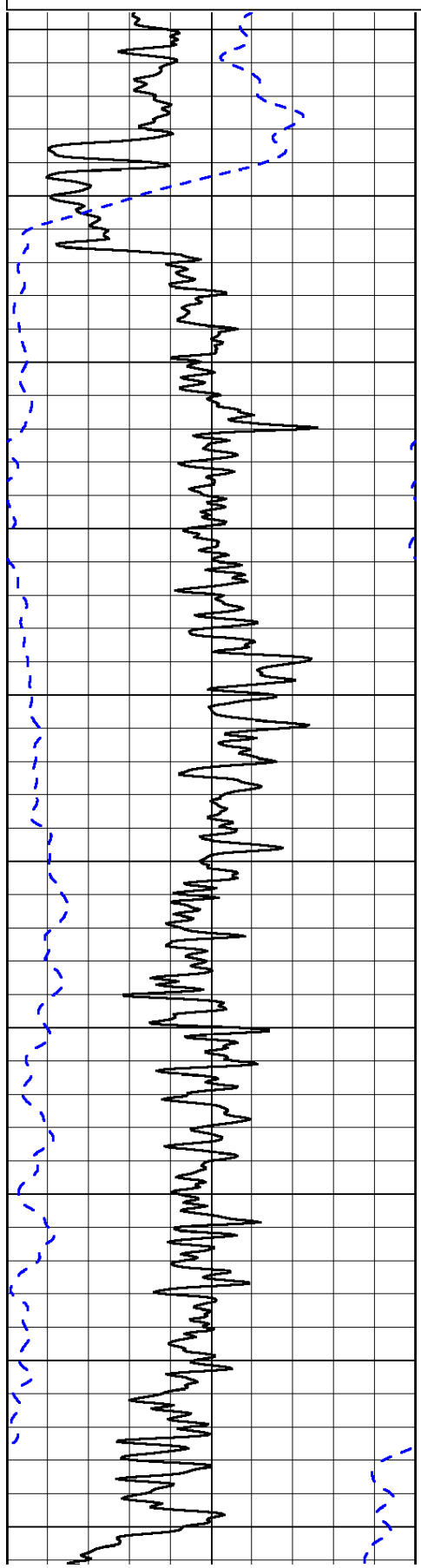
0	Gamma Ray	150
-200	SP (mV)	0

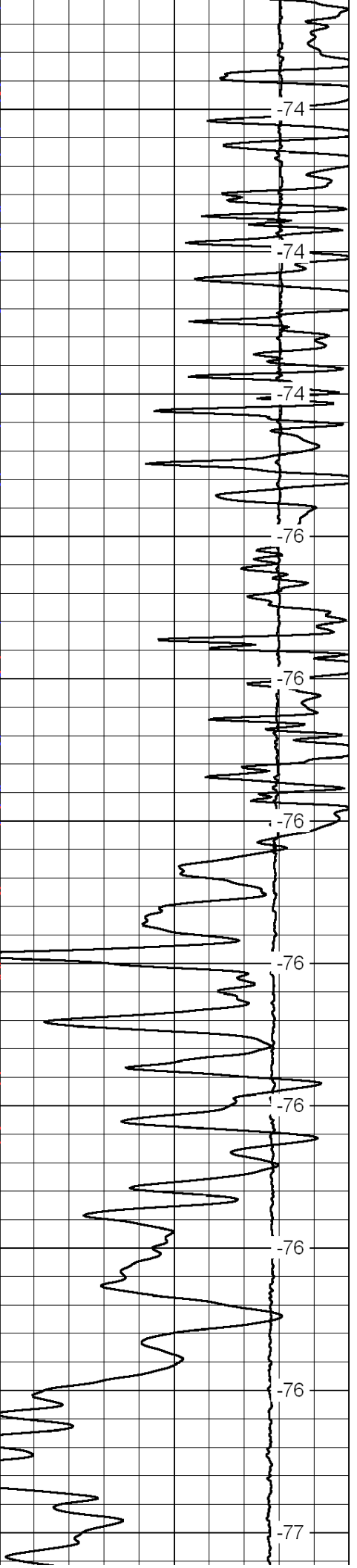
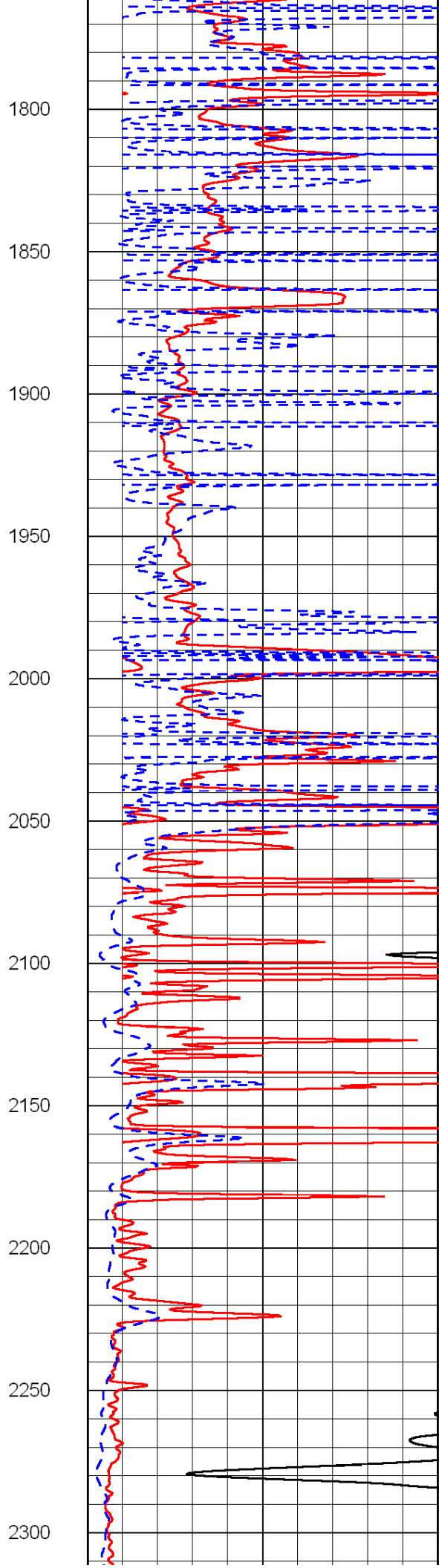
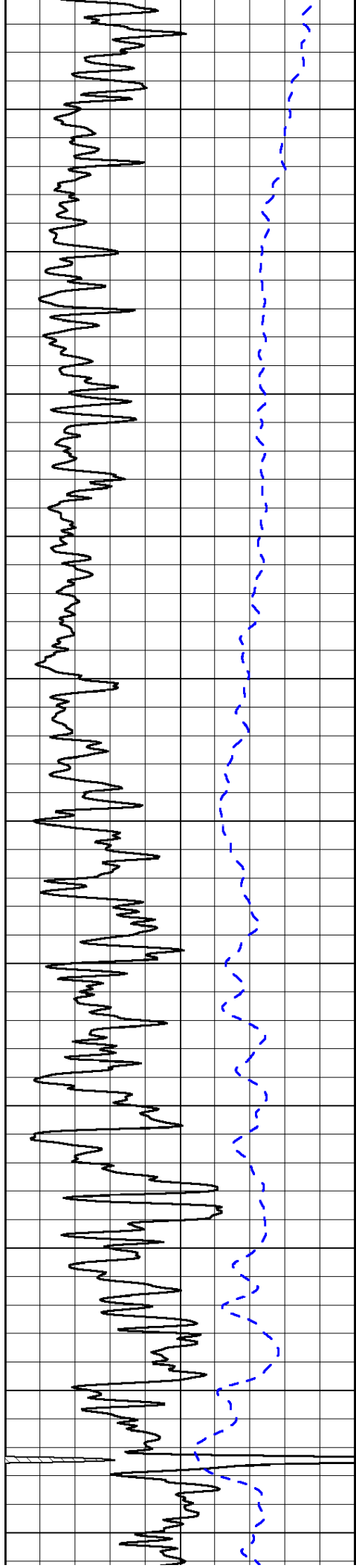
0	Shallow Resistivity	50
0	Deep Resistivity	50

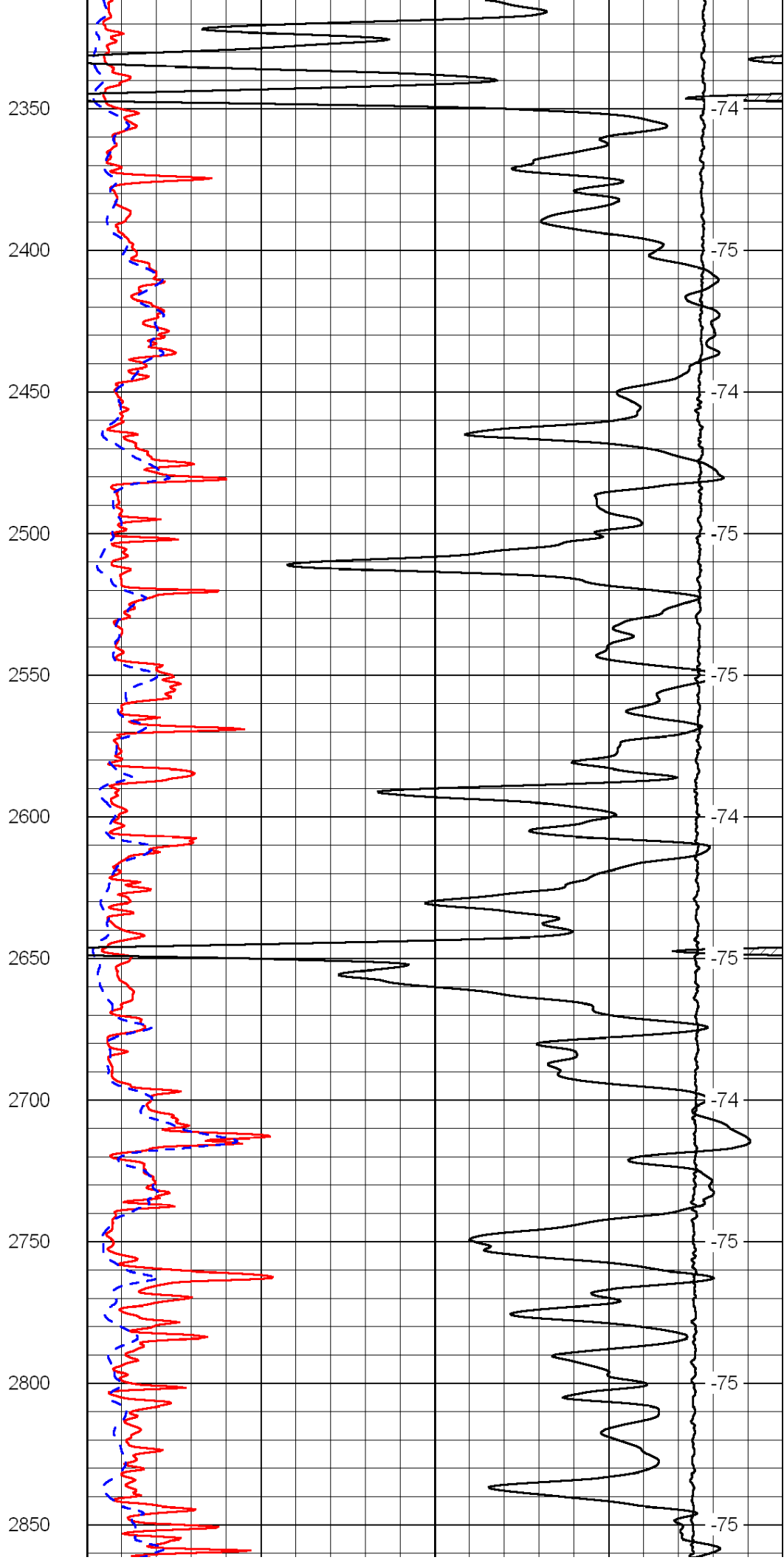
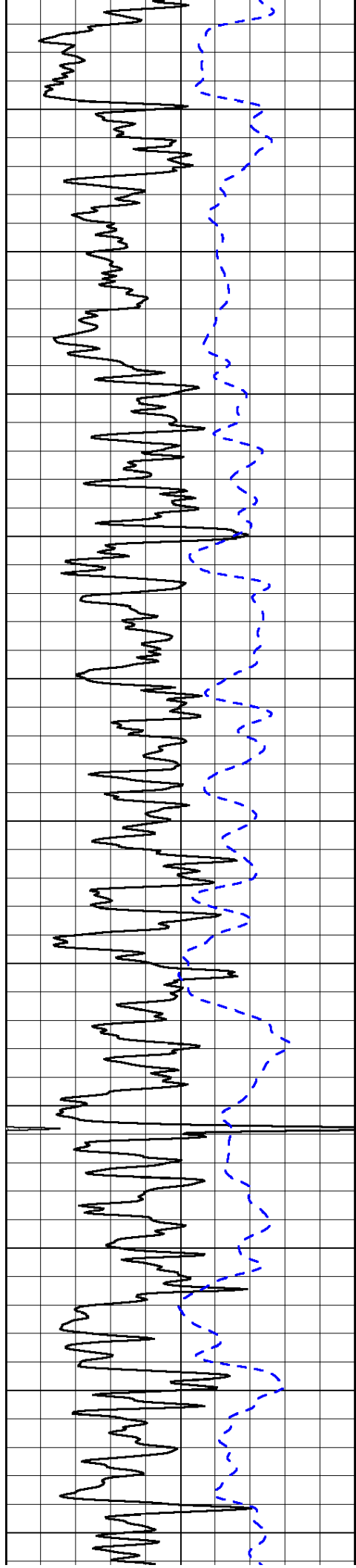
LSPD

1000	Conductivity	0
15000	Line Tension	0

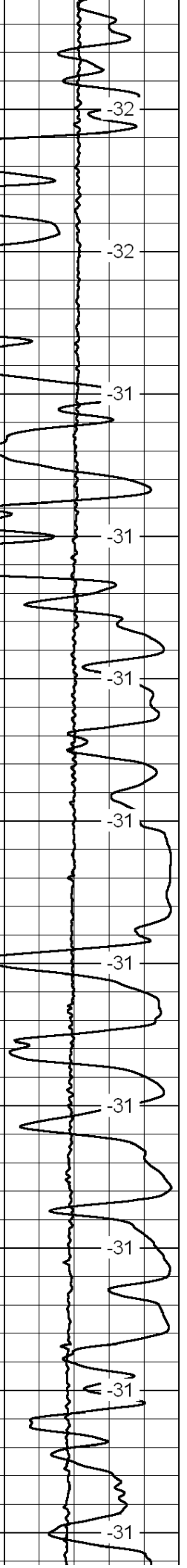
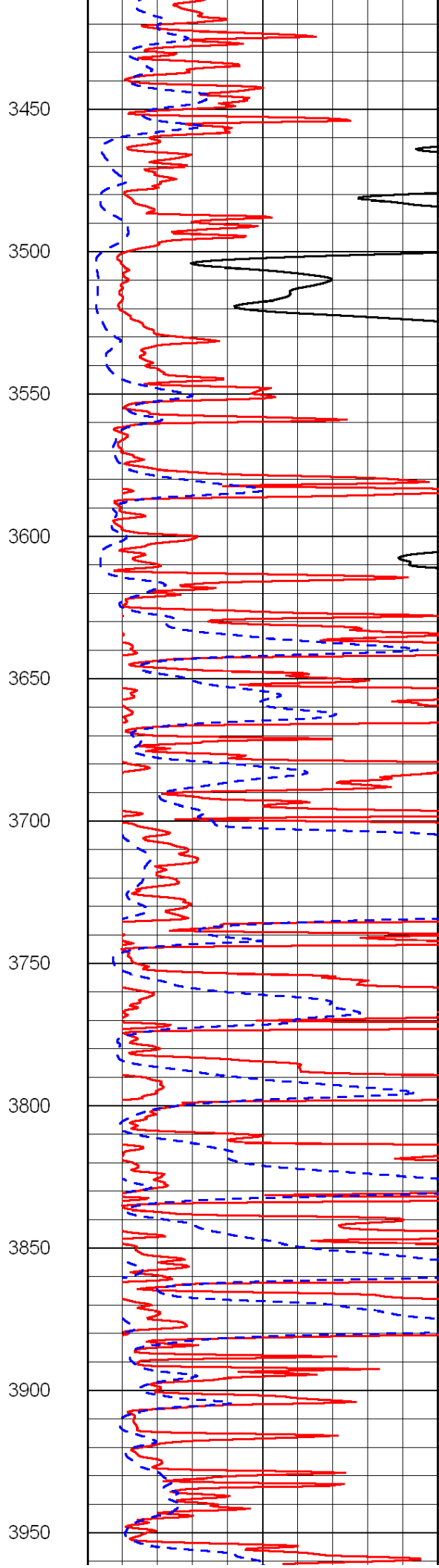
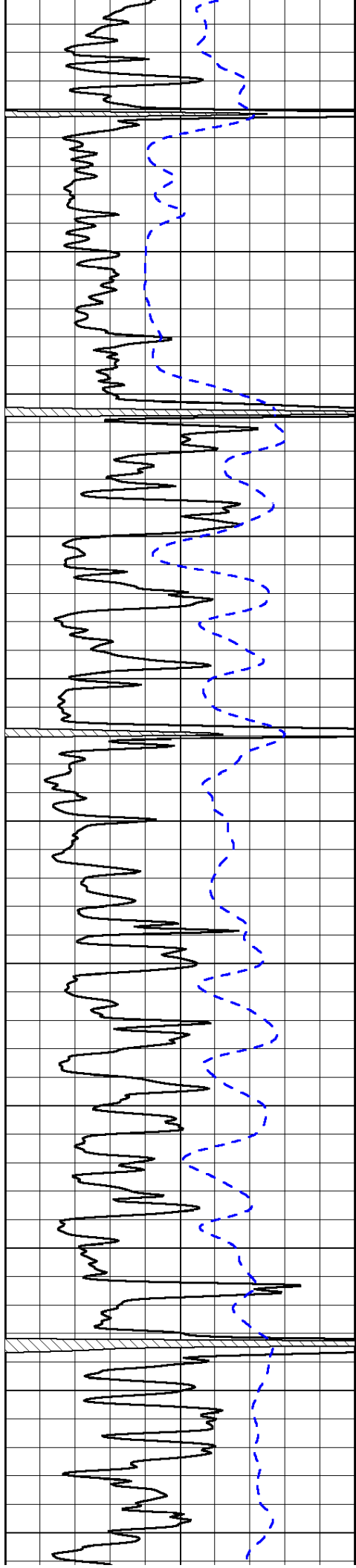
50	Shallow Resistivity	500
50	Deep Resistivity	500

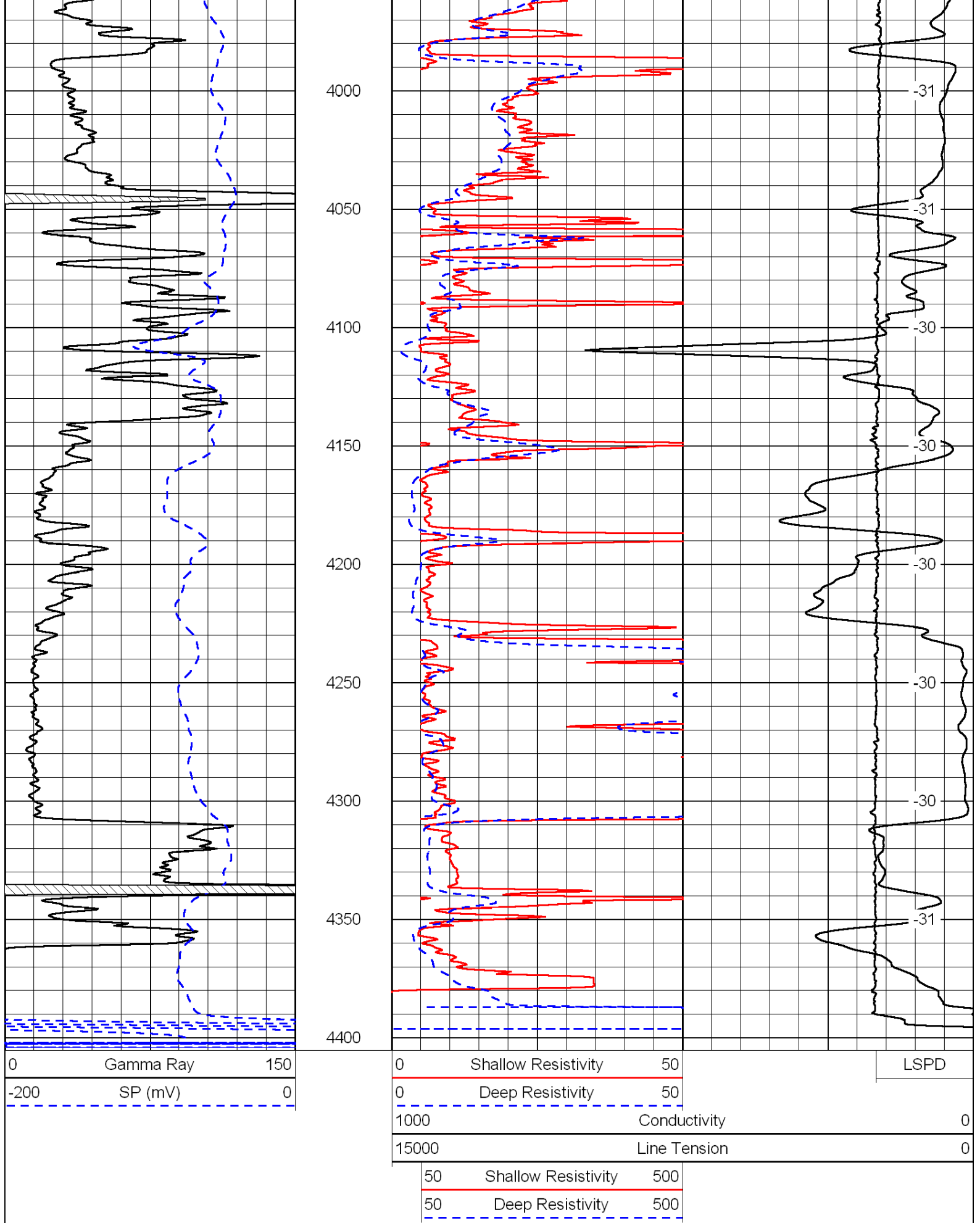










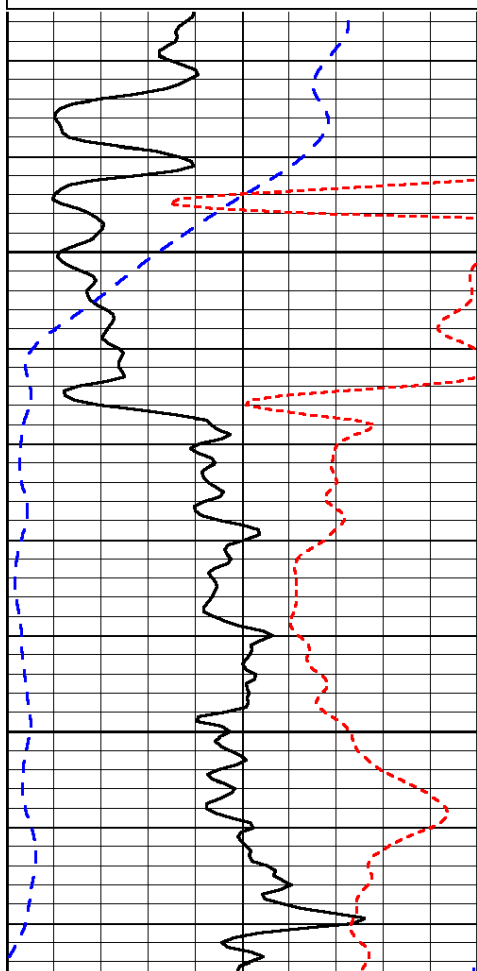


Presentation Format: dil  
 Dataset Creation: Thu Oct 06 20:29:45 2011  
 Charted by: Depth in Feet scaled 1:240

0	Gamma Ray	150
-200	SP (mV)	0
-160	Rxo / Rt	40

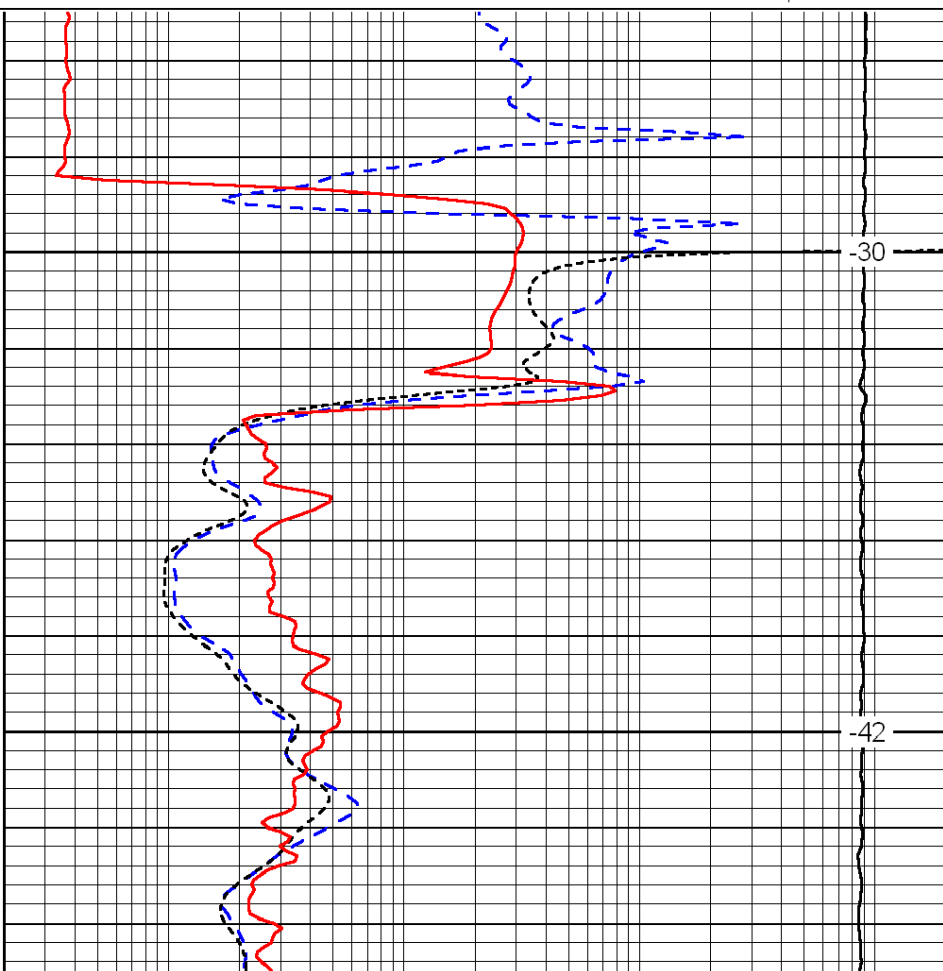
0.2	Deep Resistivity	2000
0.2	Medium Resistivity	2000
0.2	Shallow Resistivity	2000
15000	Line Tension	0

LSPD



1350

1400



-30

-42

0	Gamma Ray	150
-200	SP (mV)	0
-160	Rxo / Rt	40

0.2	Deep Resistivity	2000
0.2	Medium Resistivity	2000
0.2	Shallow Resistivity	2000
15000	Line Tension	0

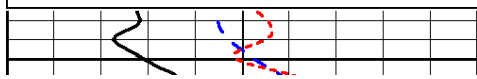
LSPD

Database File: c:\warrior\data\ares\_wells no.13-13a\areshd.db  
 Dataset Pathname: dil/aresorig2  
 Presentation Format: dil  
 Dataset Creation: Thu Oct 06 20:29:45 2011  
 Charted by: Depth in Feet scaled 1:240

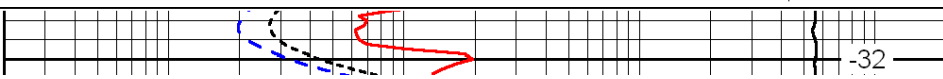
0	Gamma Ray	150
-200	SP (mV)	0
-160	Rxo / Rt	40

0.2	Deep Resistivity	2000
0.2	Medium Resistivity	2000
0.2	Shallow Resistivity	2000
15000	Line Tension	0

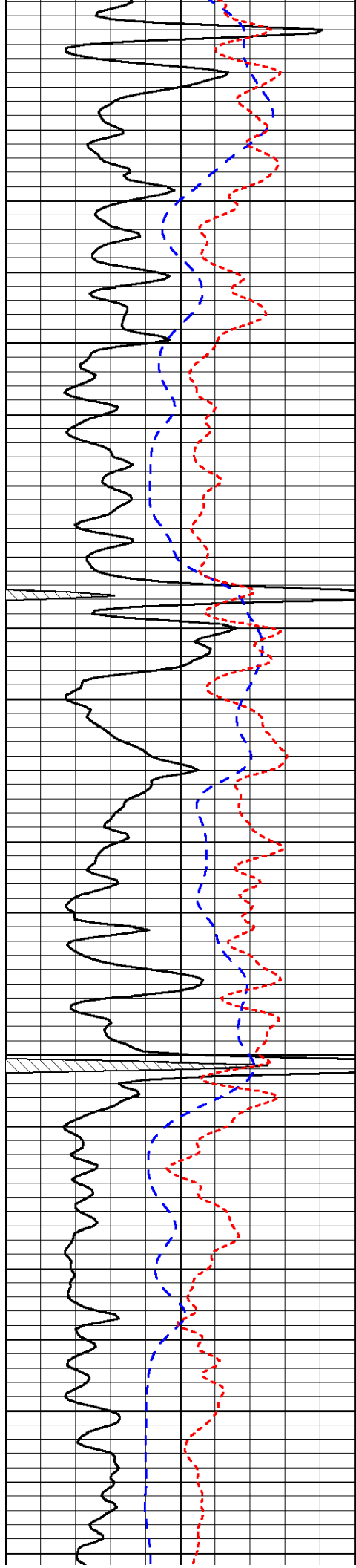
LSPD



3300



-32

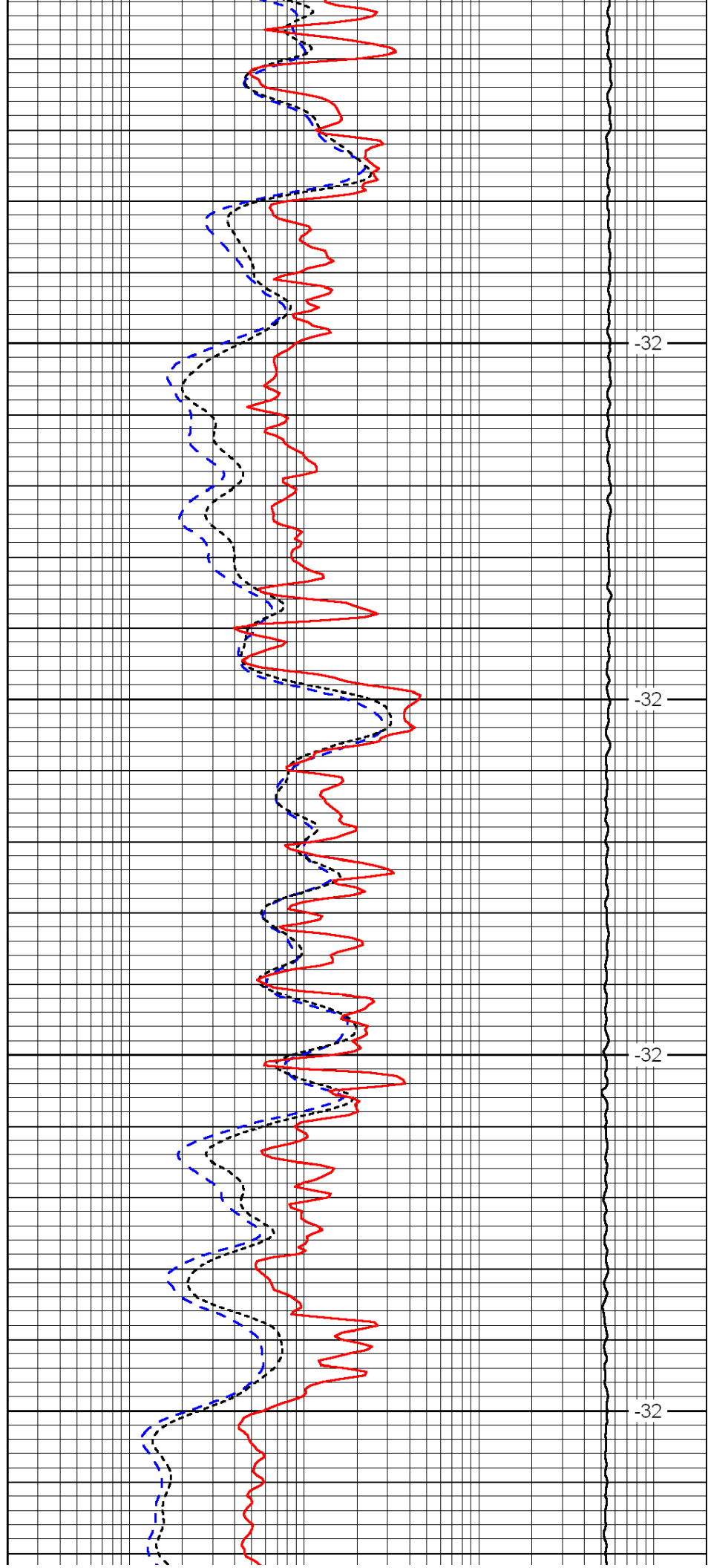


3350

3400

3450

3500

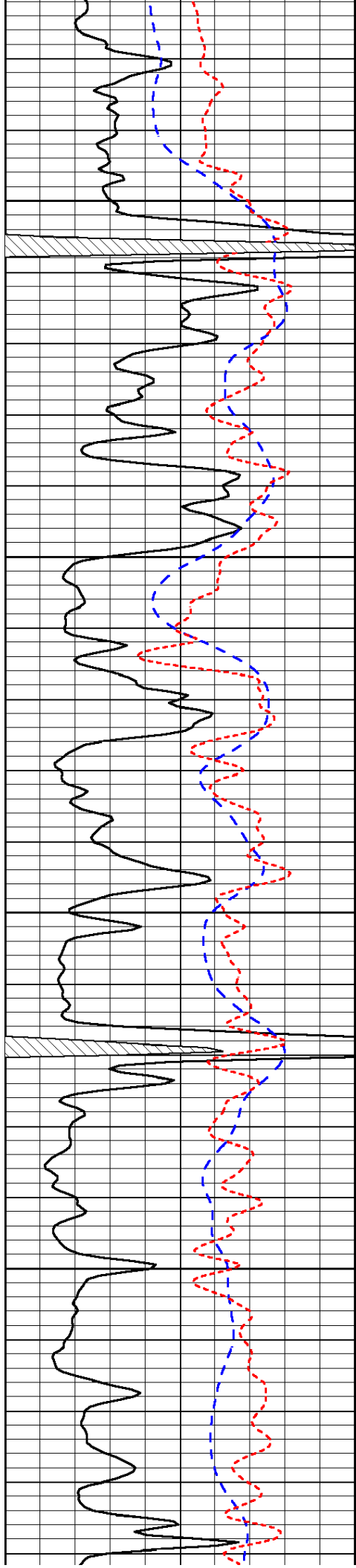


-32

-32

-32

-32

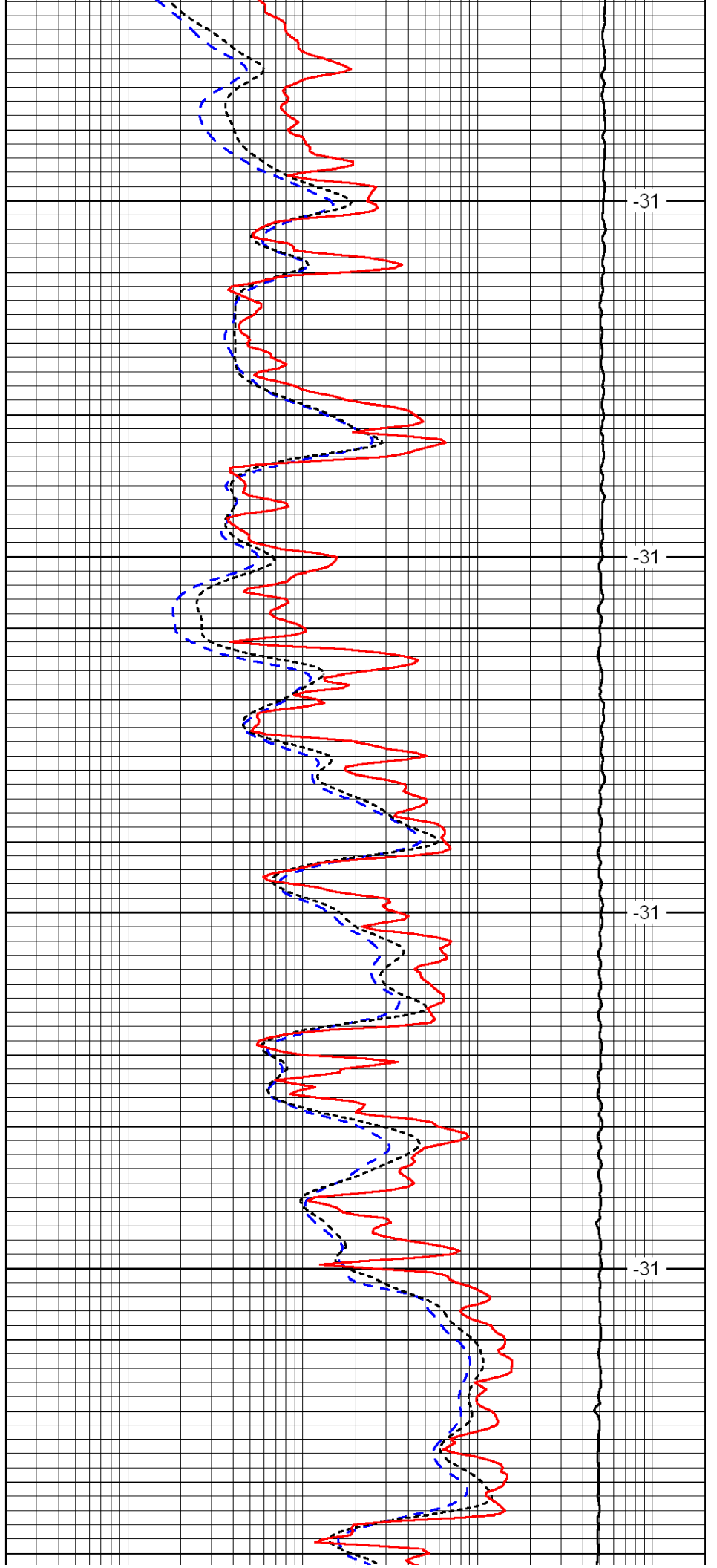


3550

3600

3650

3700

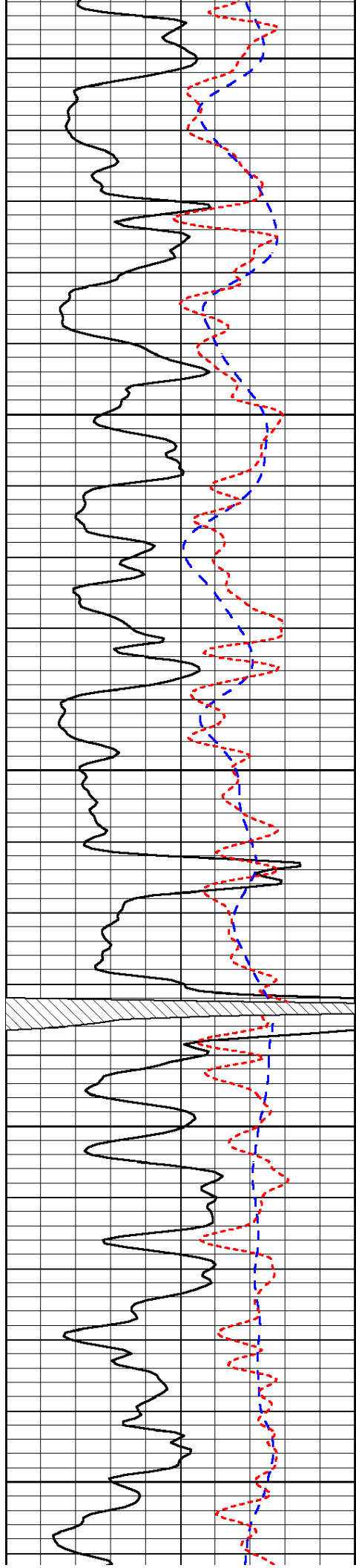


-31

-31

-31

-31



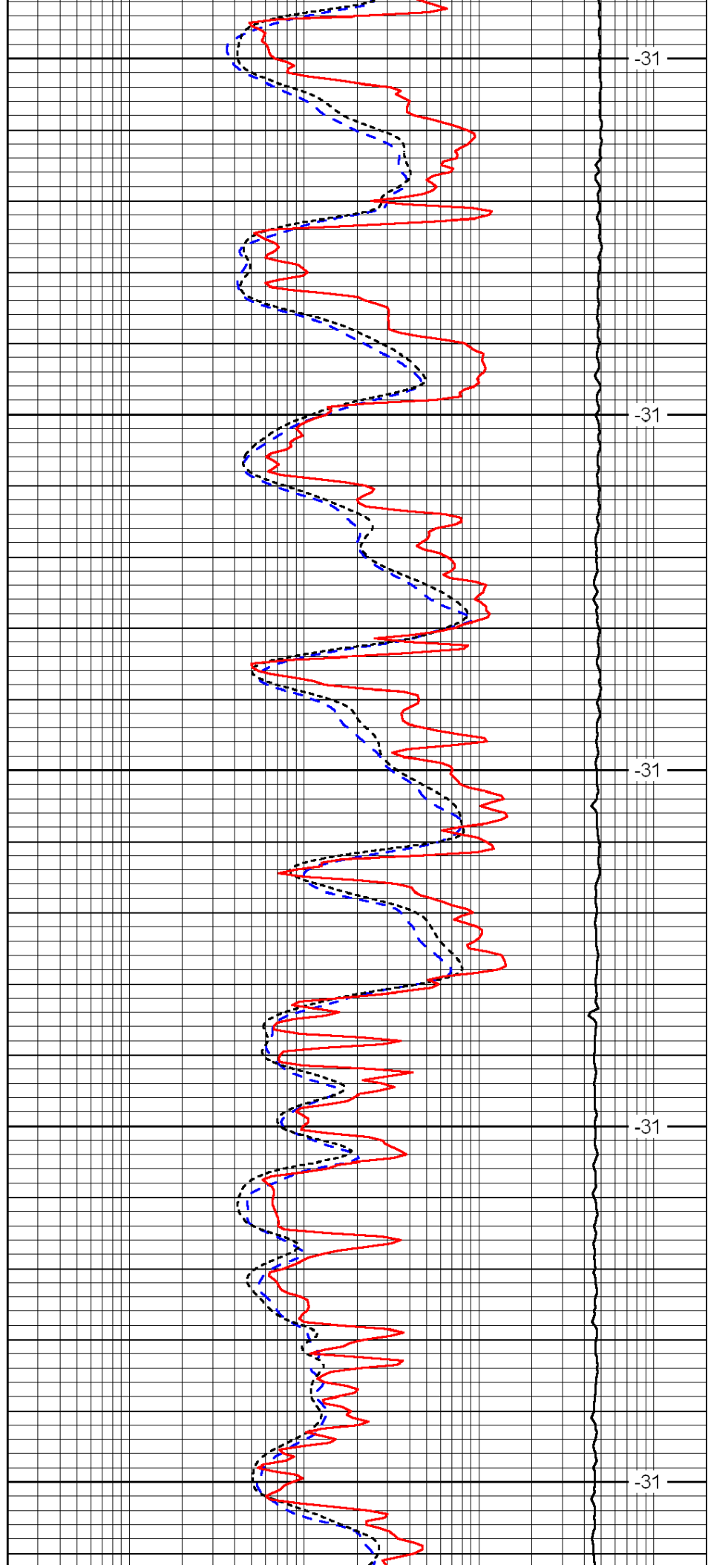
3750

3800

3850

3900

3950



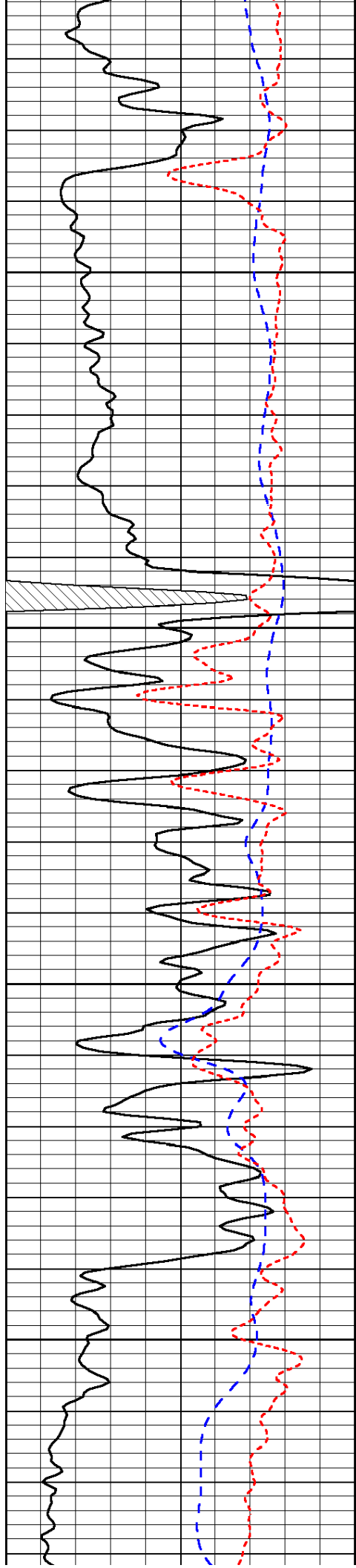
-31

-31

-31

-31

-31

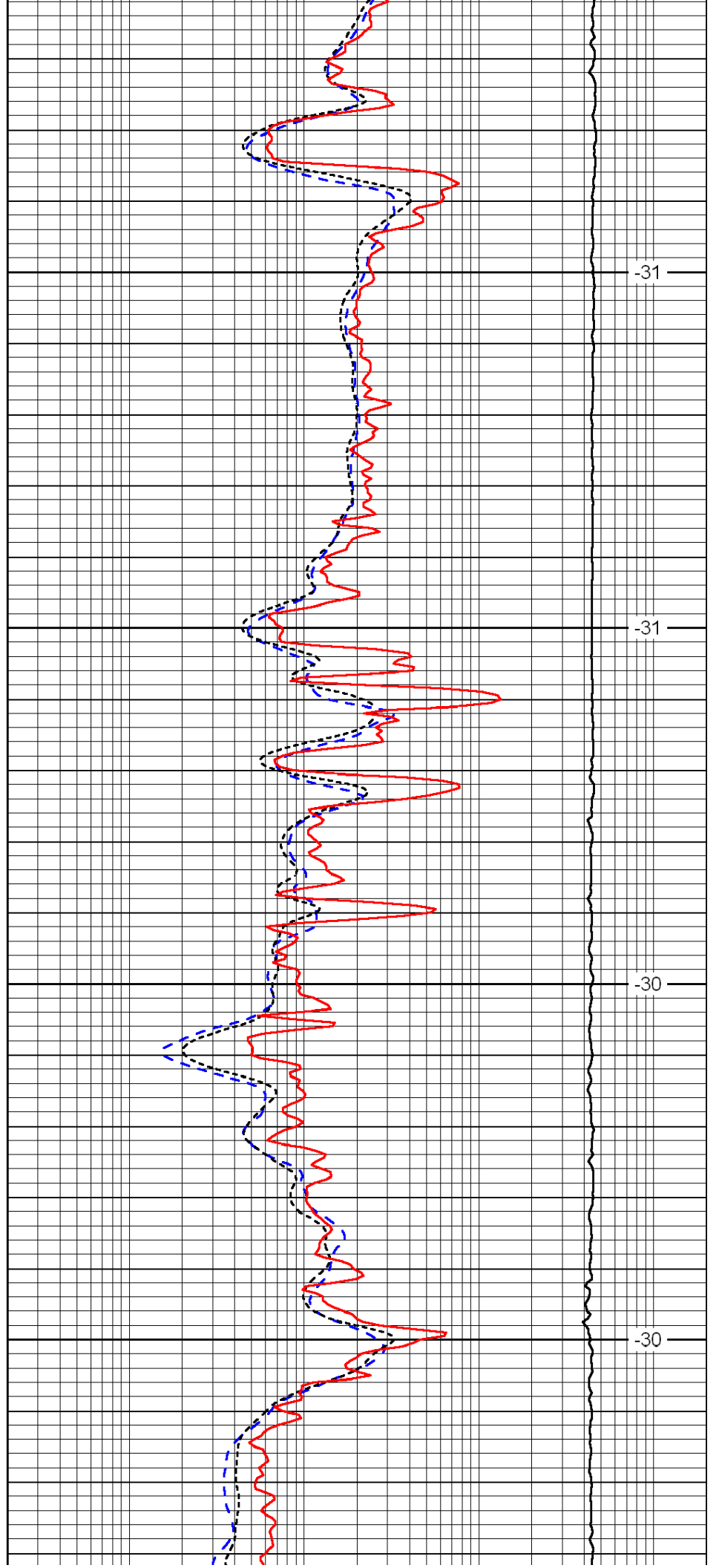


4000

4050

4100

4150

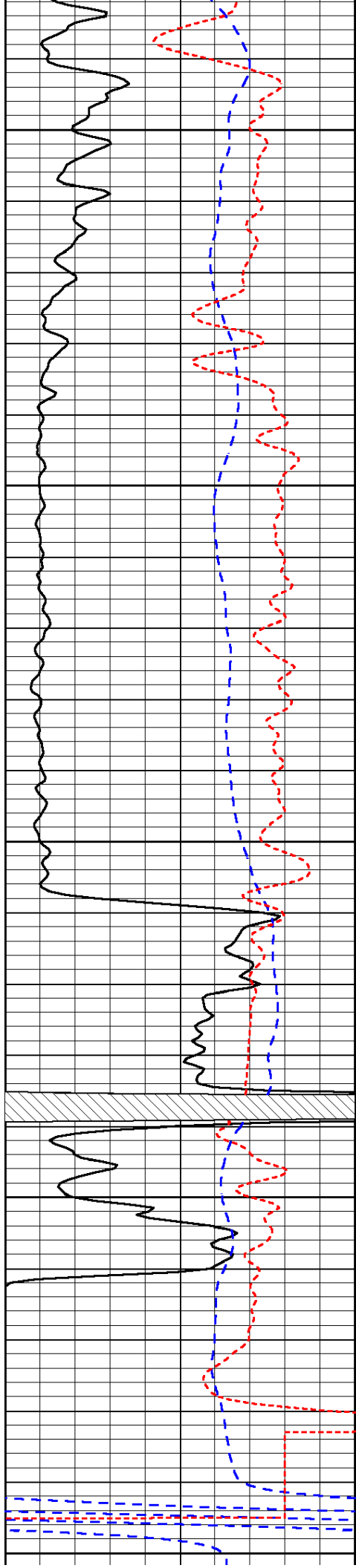


-31

-31

-30

-30



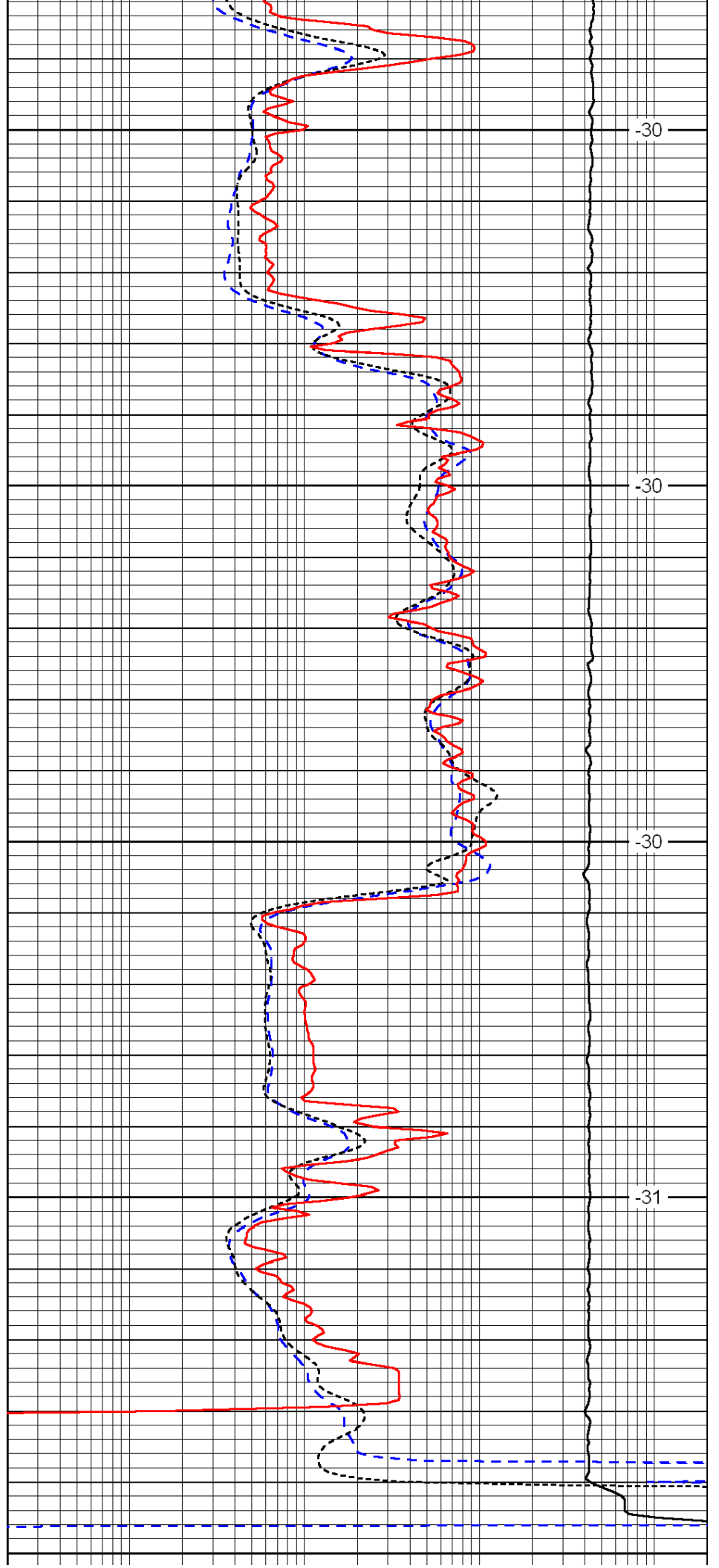
4200

4250

4300

4350

4400



-30

-30

-30

-31

0	Gamma Ray	150
-200	SP (mV)	0
-160	Rxo / Rt	40

0.2	Deep Resistivity	2000
0.2	Medium Resistivity	2000
0.2	Shallow Resistivity	2000
15000	Line Tension	0

LSPD