



DIGITAL LOG (785) 625-3858

Borehole Compensated
Sonic Log

15-135-25,304-00-00

API No.

Company **ARES Energy, LTD**
Well **Wells No.13-13A**
Field **Elmore Southwest**
County **Ness** State **Kansas**

Location **NW/NW SE SW
1042' FSL & 1394' FWL**

Sec: **13** Twp: **18S** Rge: **21W**

Other Services
CNL/CDL
MEL/BHCS

Permanent Datum **Ground Level** Elevation **2113**
Log Measured From **Kelly Bushing** **8** Ft. Above Perm. Datum
Drilling Measured From **Kelly Bushing**

Elevation
K.B. 2121
D.F. 2113
G.L. 2113

Date	10/6/2011	
Run Number	Two	
Type Log	BHC Sonic	
Depth Driller	4390	
Depth Logger	4389	
Bottom Logged Interval	4378	
Top Logged Interval	1300	
Type Fluid In Hole	Chemical	
Salinity, PPM CL	9.100	
Density	9.2	
Level	Full	
Max. Rec. Temp. F	120	
Operating Rig Time	4 Hours	
Equipment -- Location	17 Days	
Recorded By	C. Desaire	
Witnessed By	Justin Carter	

Borehole Record

Run No.	Bit	From	To	Size	Wgt.	From	To
1	12.25	00	1341	8.625	24#	00	1341
2	7.875	1341	4390				

Casing Record

<<< Fold Here >>>

All interpretations are opinions based on inferences from electrical or other measurements and we cannot and do not guarantee the accuracy or correctness of any interpretation, and we shall not, except in the case of gross or willful negligence on our part, be liable or responsible for any loss, costs, damages, or expenses incurred or sustained by anyone resulting from any interpretation made by any of our officers, agents or employees. These interpretations are also subject to our general terms and conditions set out in our current Price Schedule.

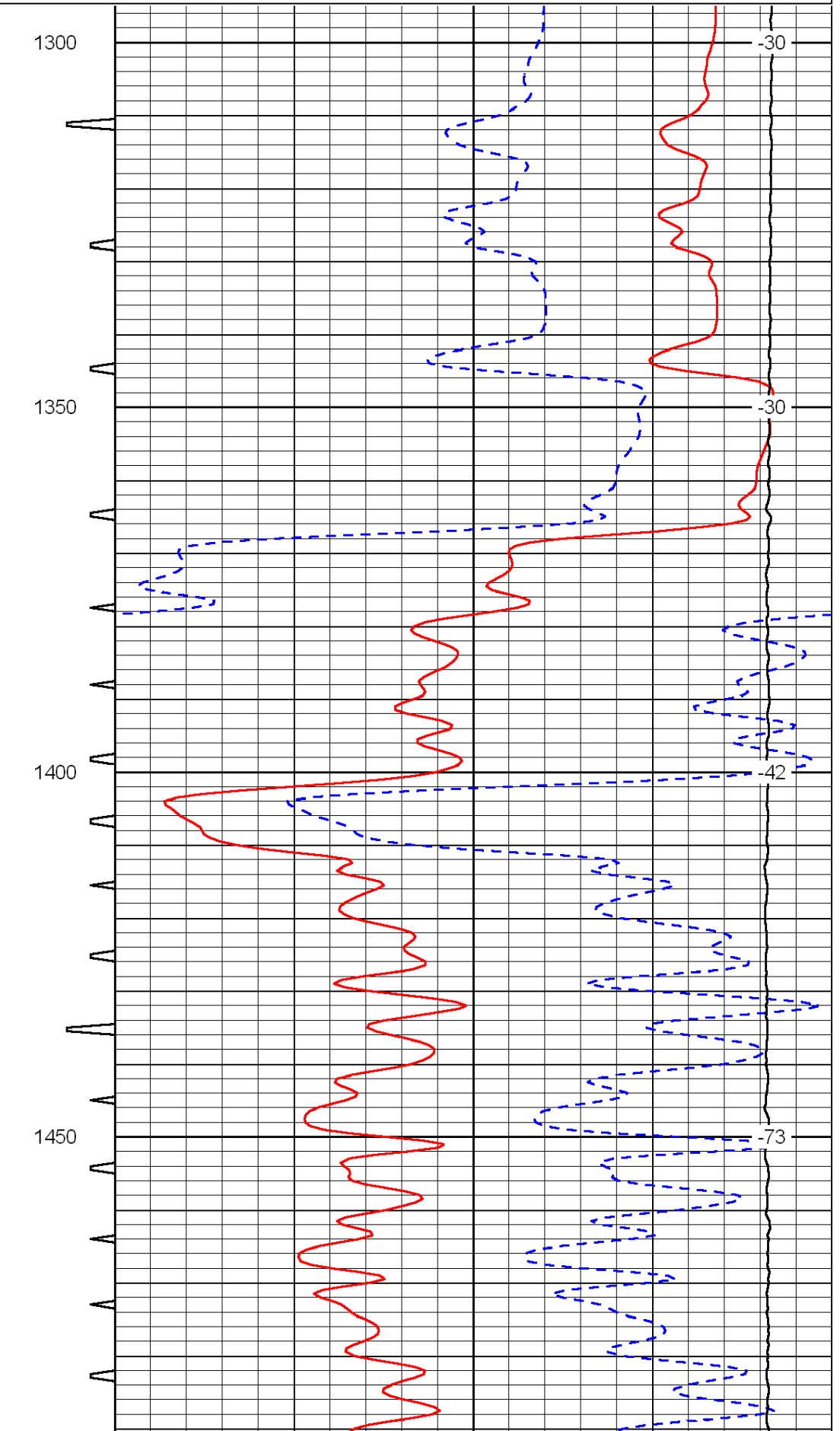
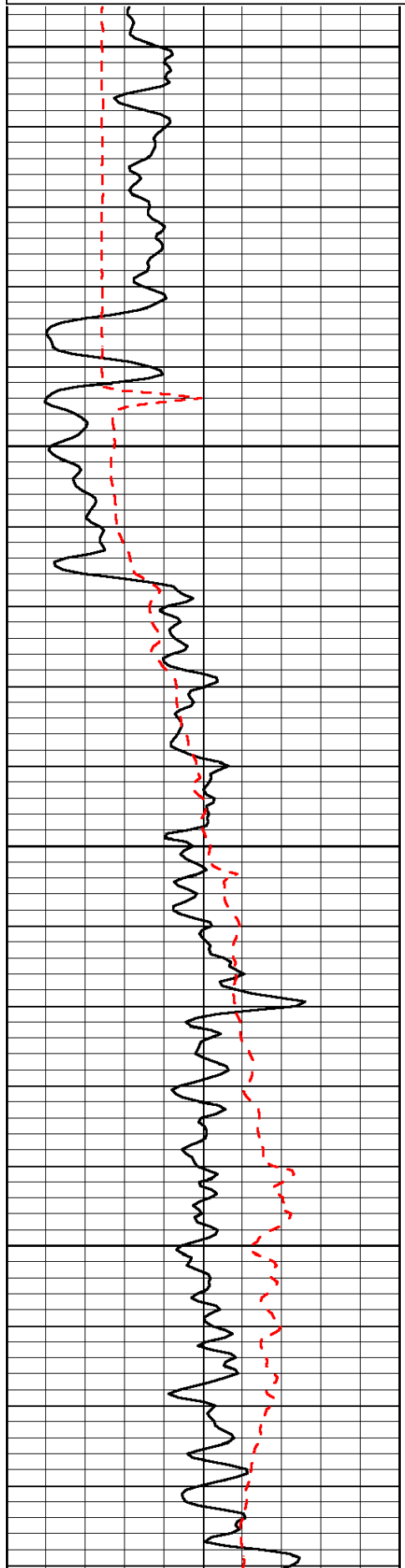
Comments

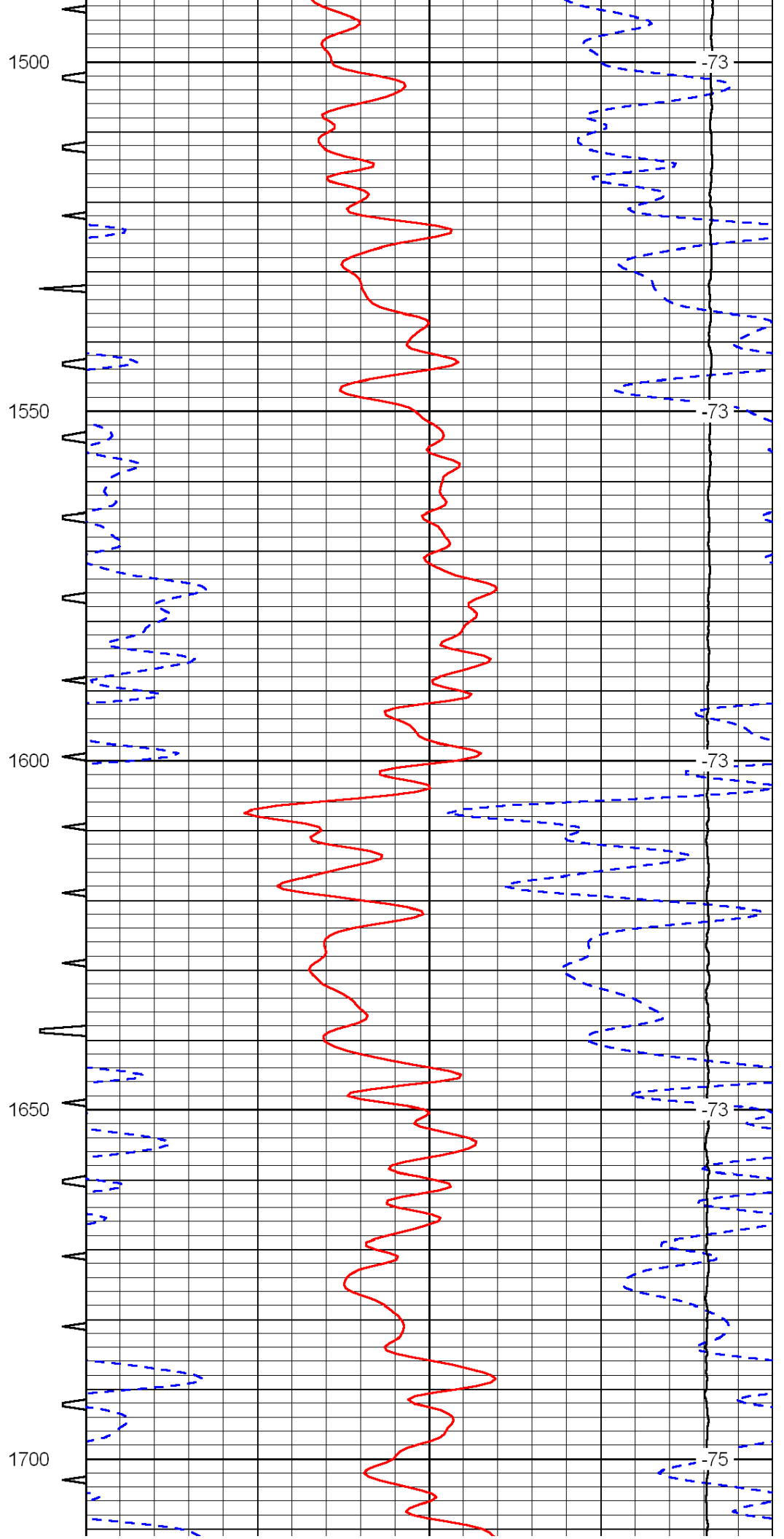
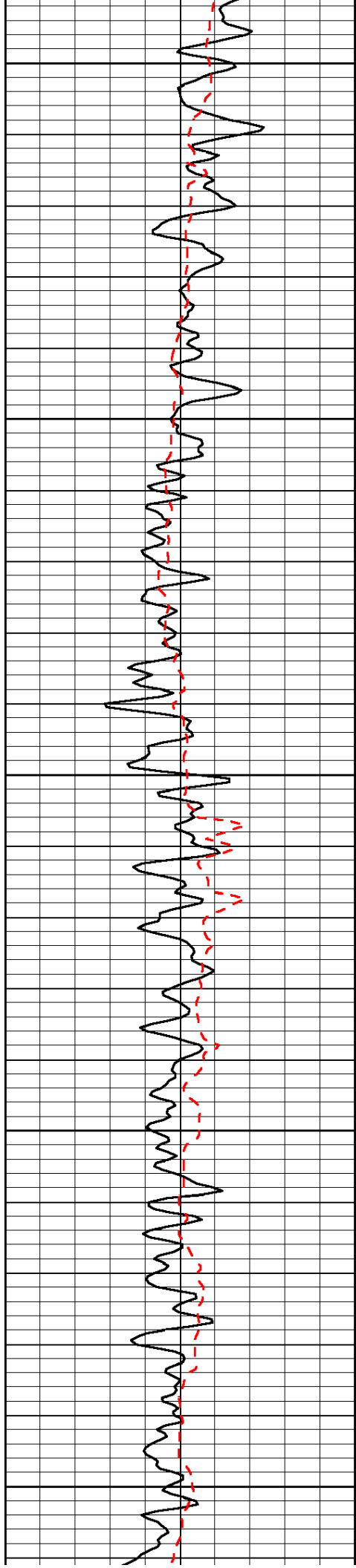
Thank you for using Log-Tech, Inc.
(785) 625-3858

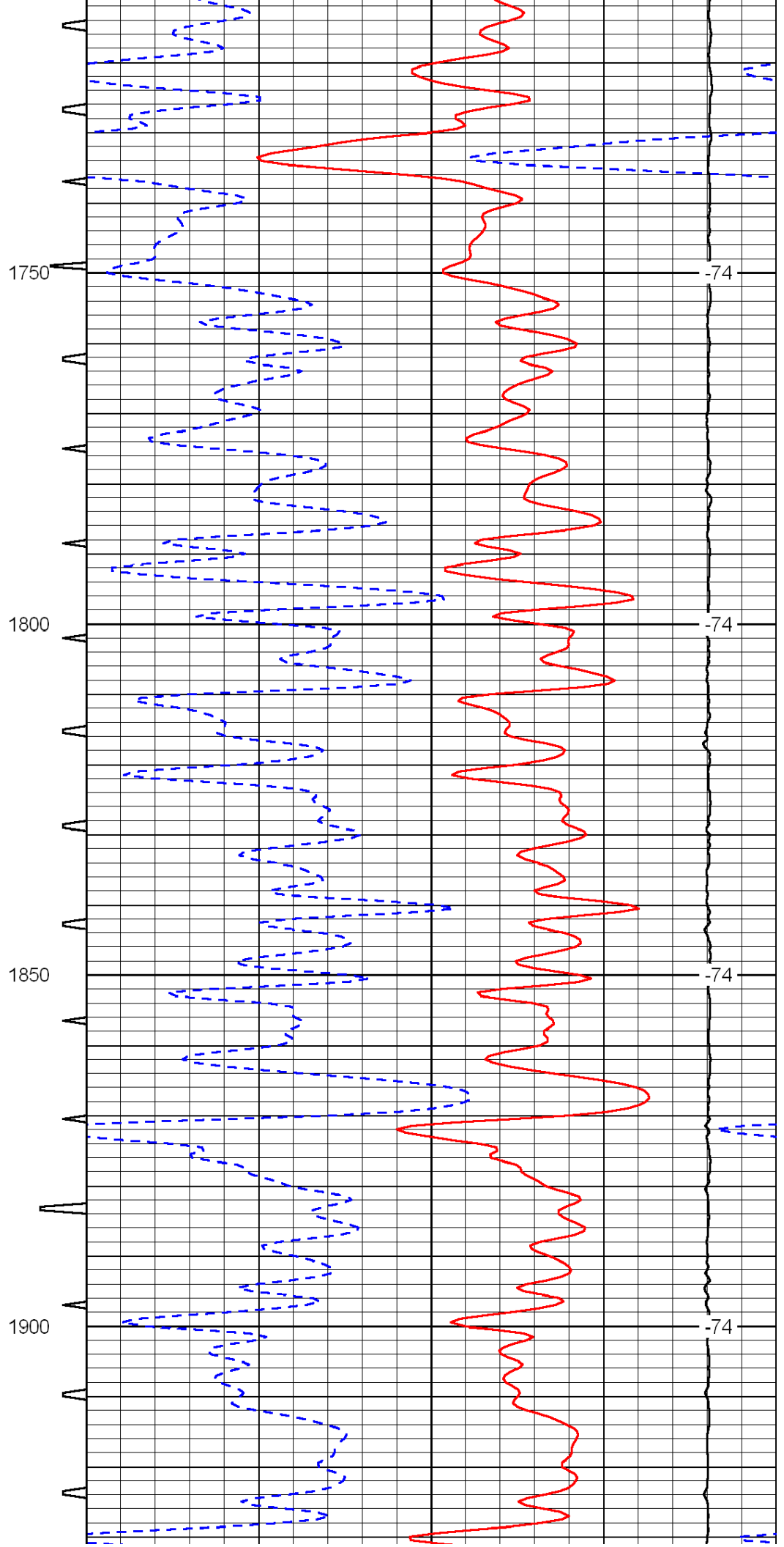
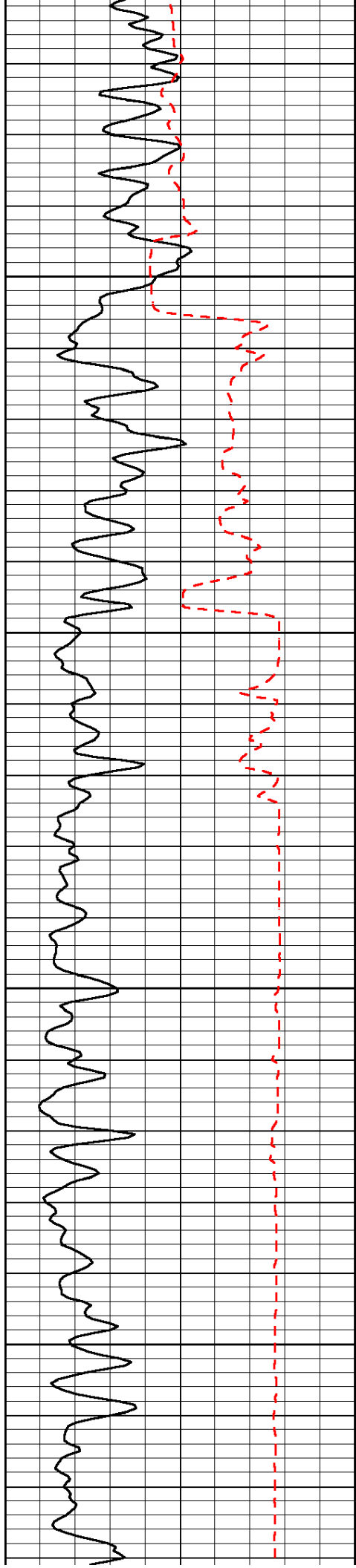
Alexander KS,
1 N, 2 W, N Into

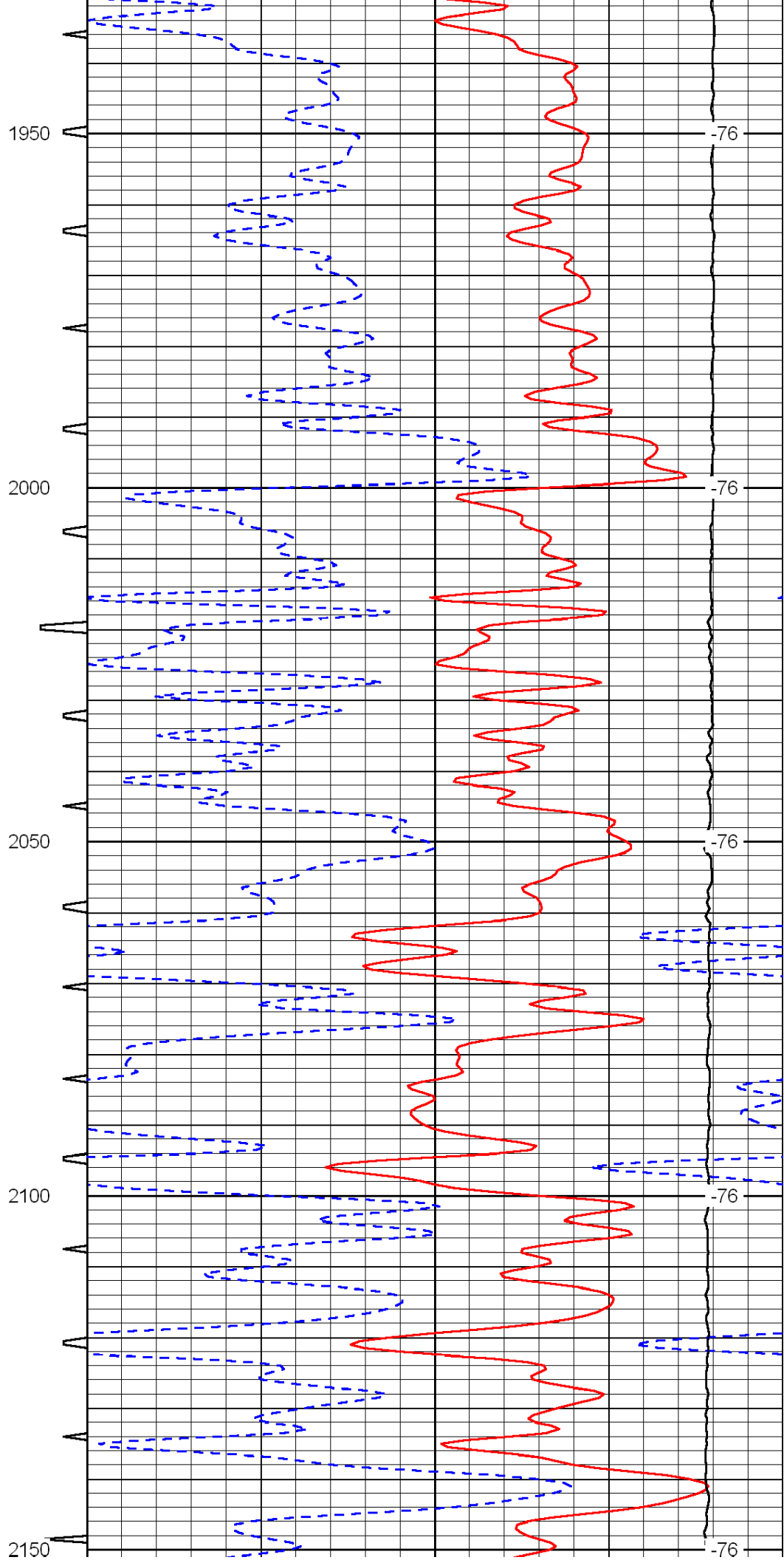
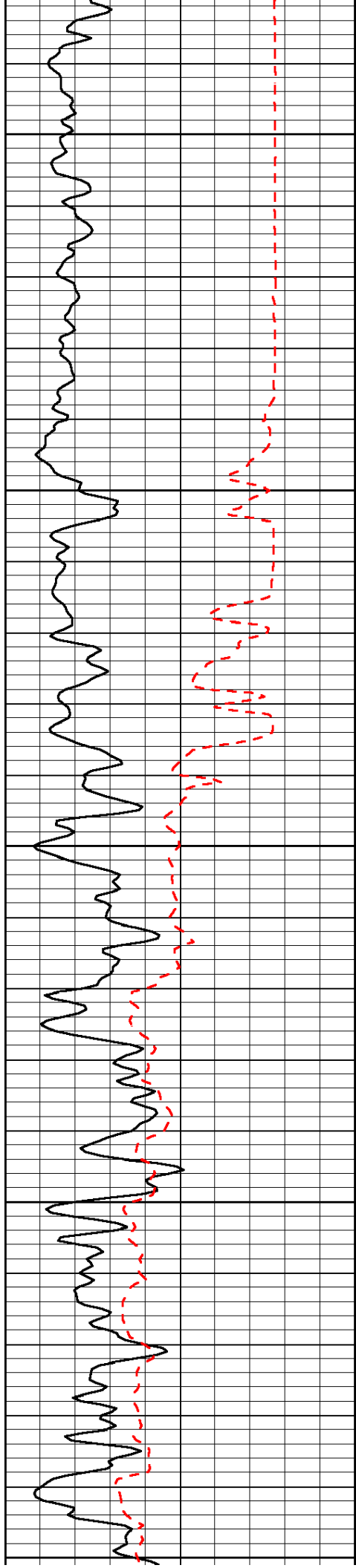
Database File: c:\warrior\data\ares_wells no.13-13a\areshd.db
Dataset Pathname: dil/aresorig2
Presentation Format: sonic
Dataset Creation: Thu Oct 06 20:29:45 2011
Charted by: Depth in Feet scaled 1:240

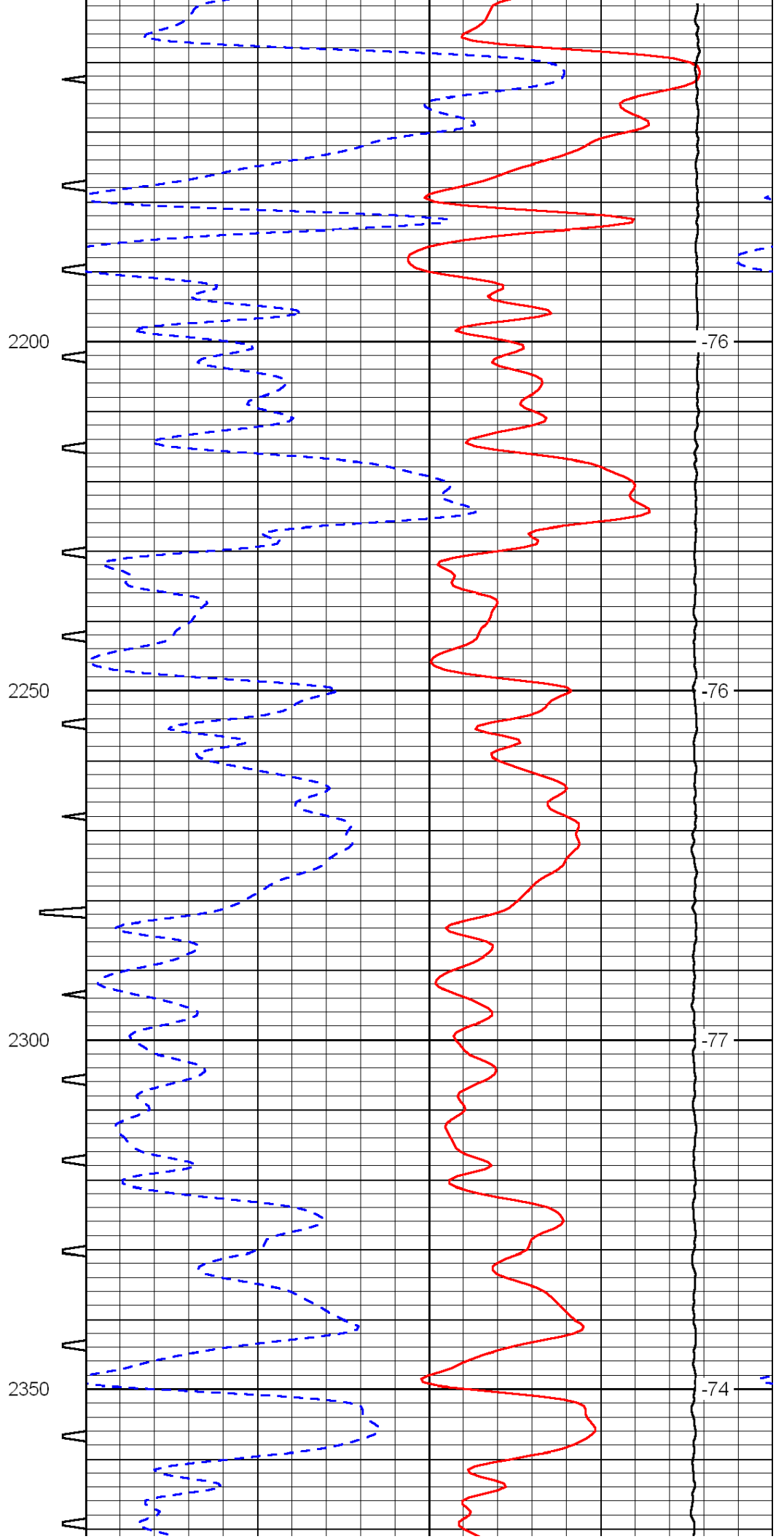
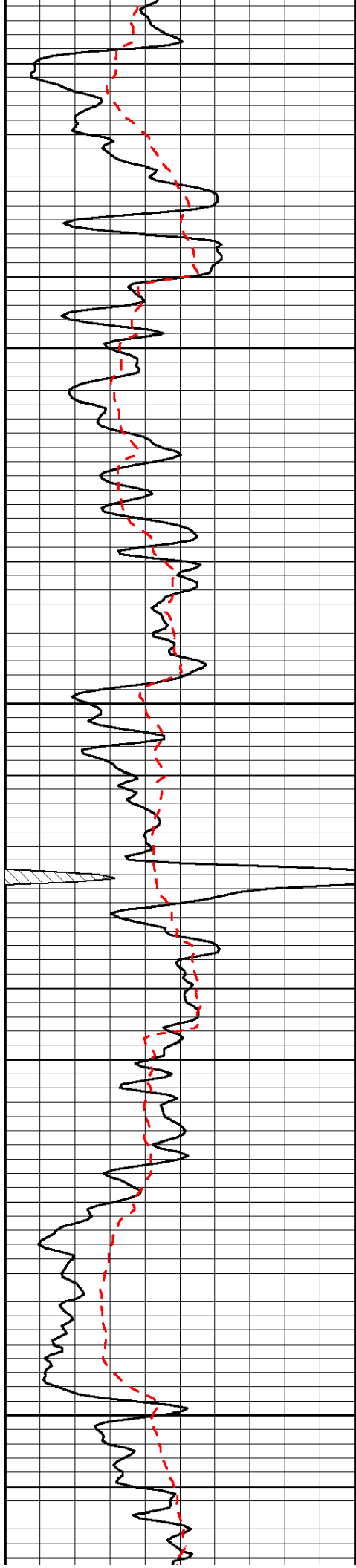
0	Gamma Ray	150	Sonic Int	140	Delta Time (usec/ft)	40
150	Gamma Ray	300	5	0	SPOR	-10
6	Caliper (GAPI)	16		15000	LTEN (lb)	0

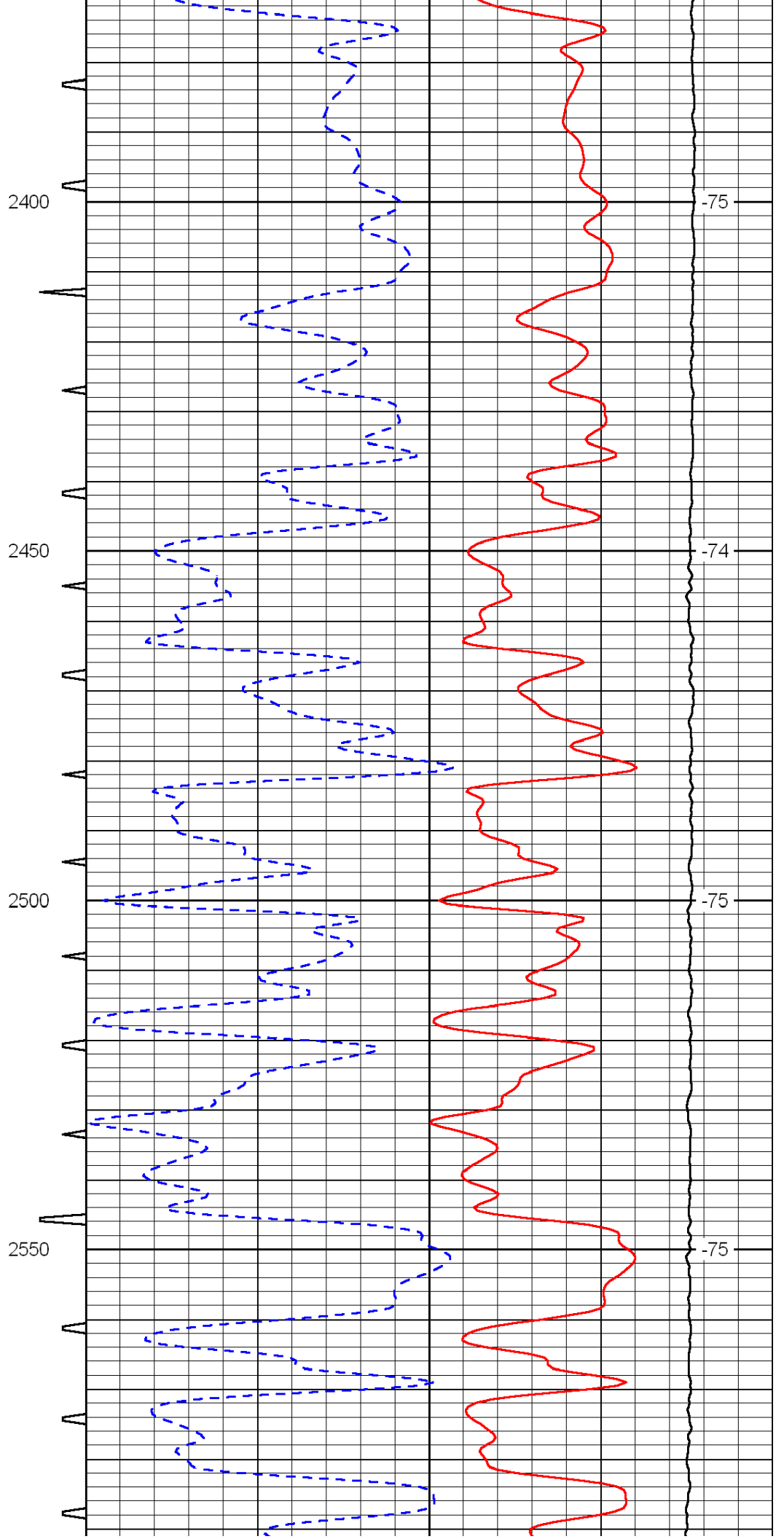
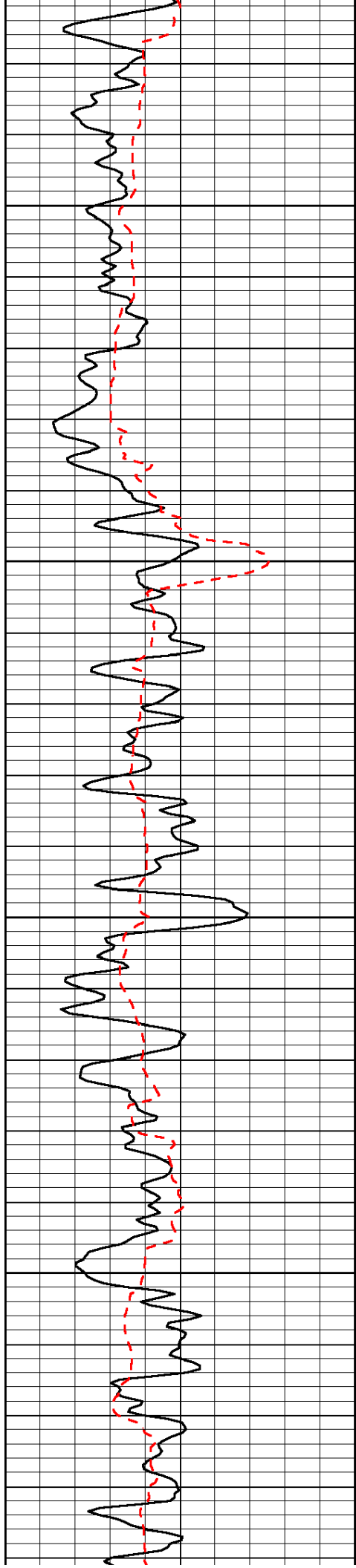


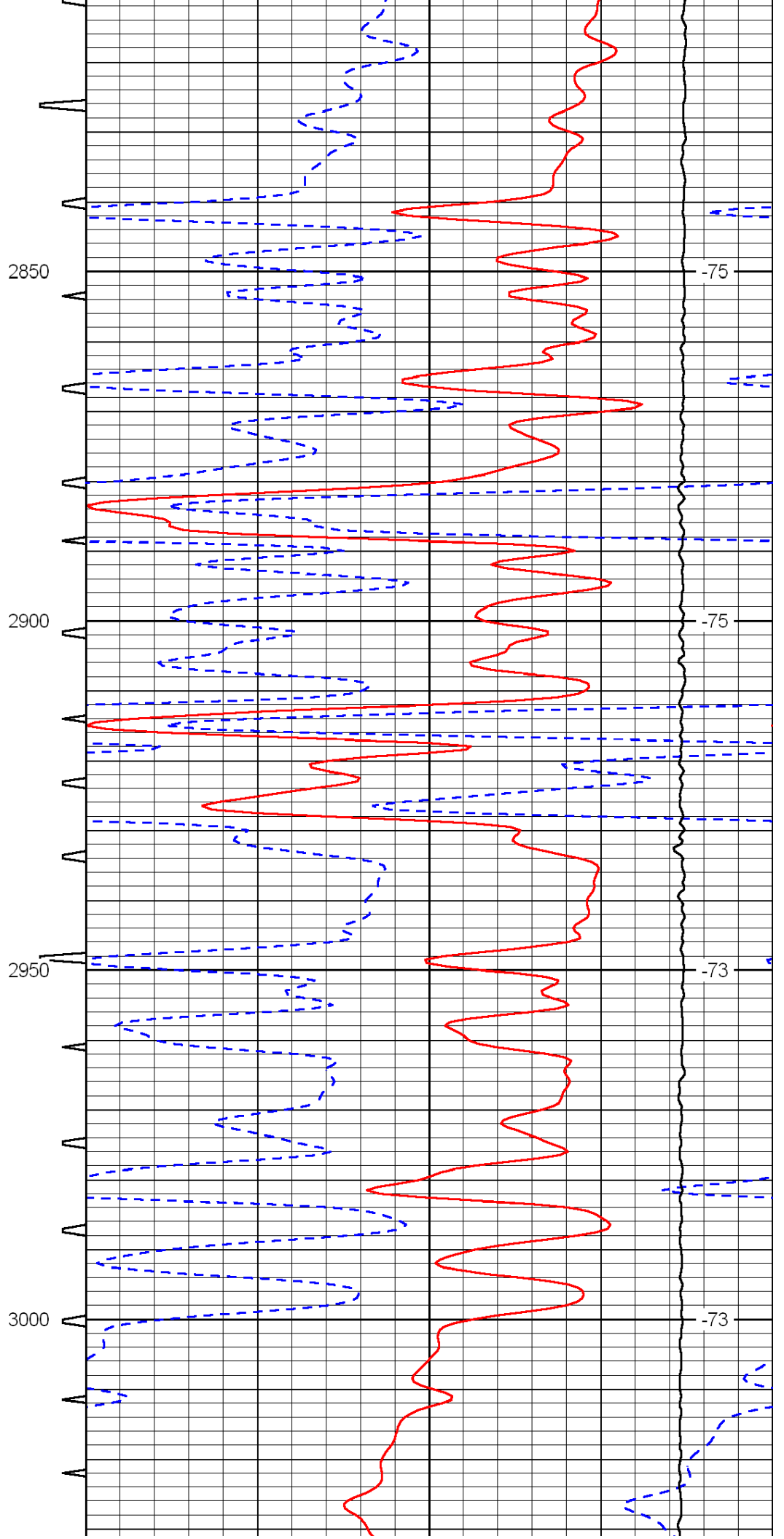
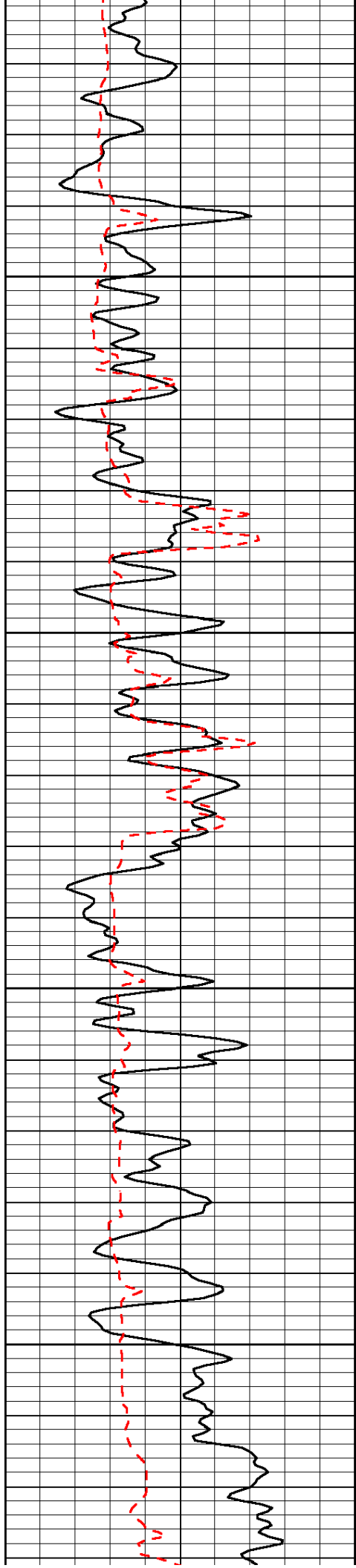


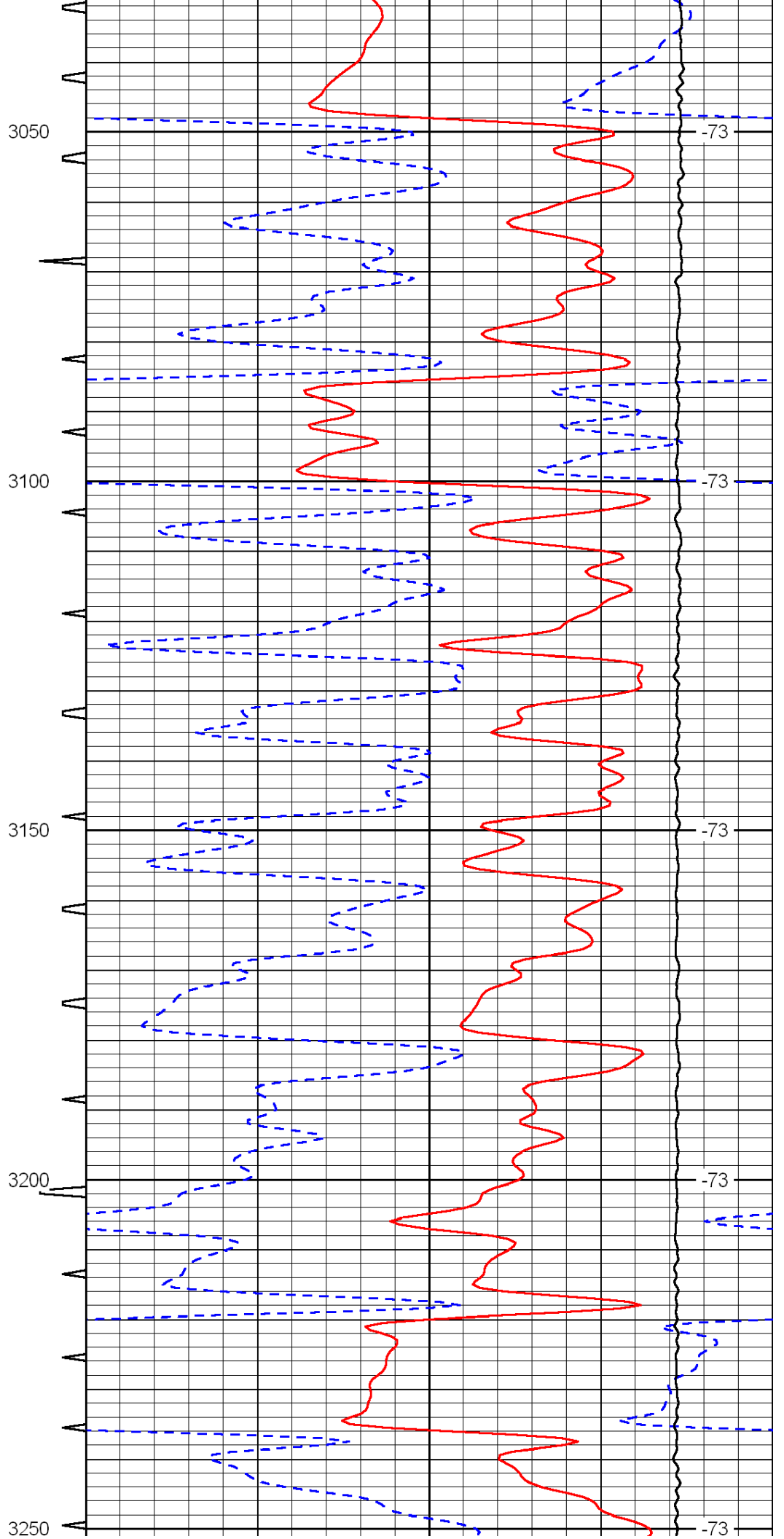
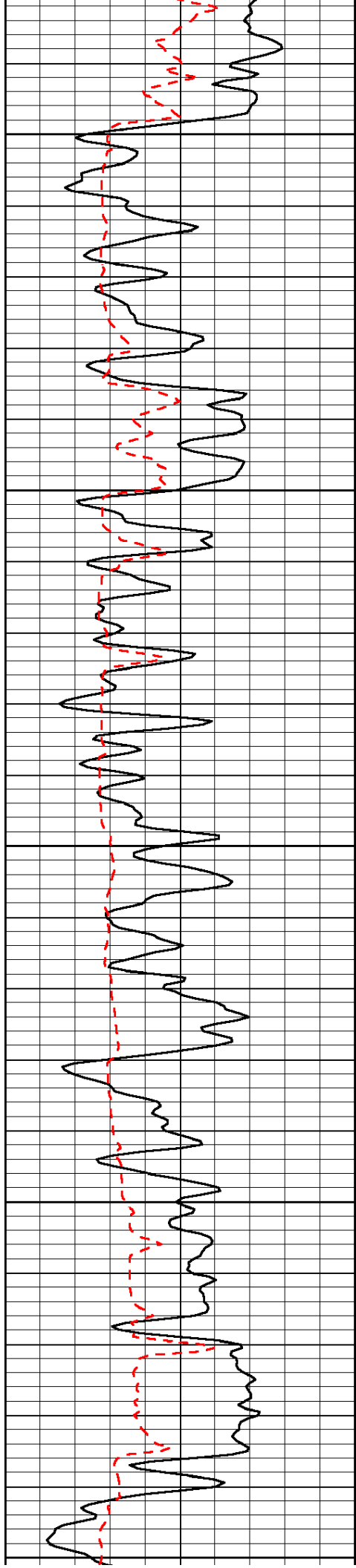


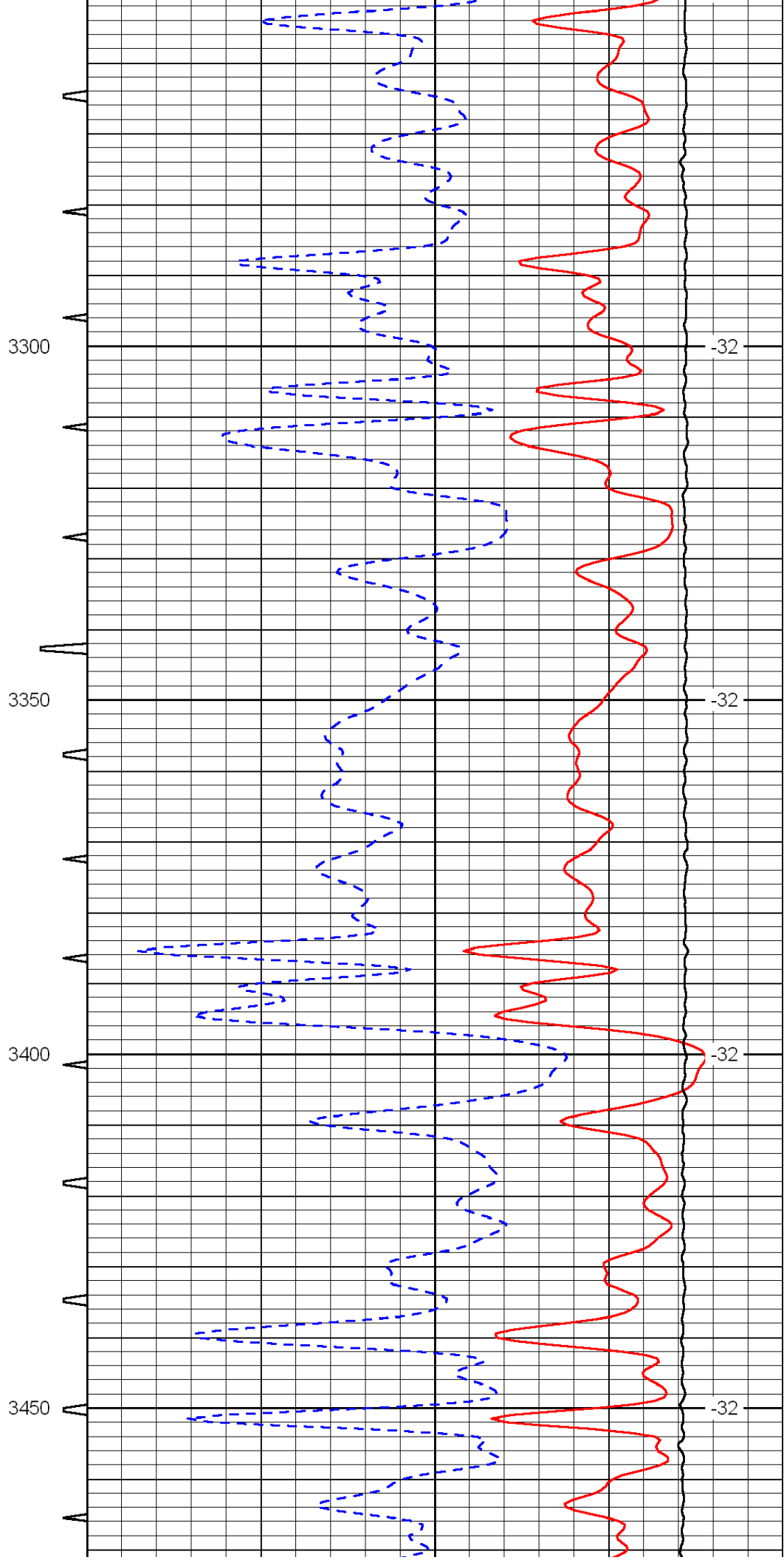
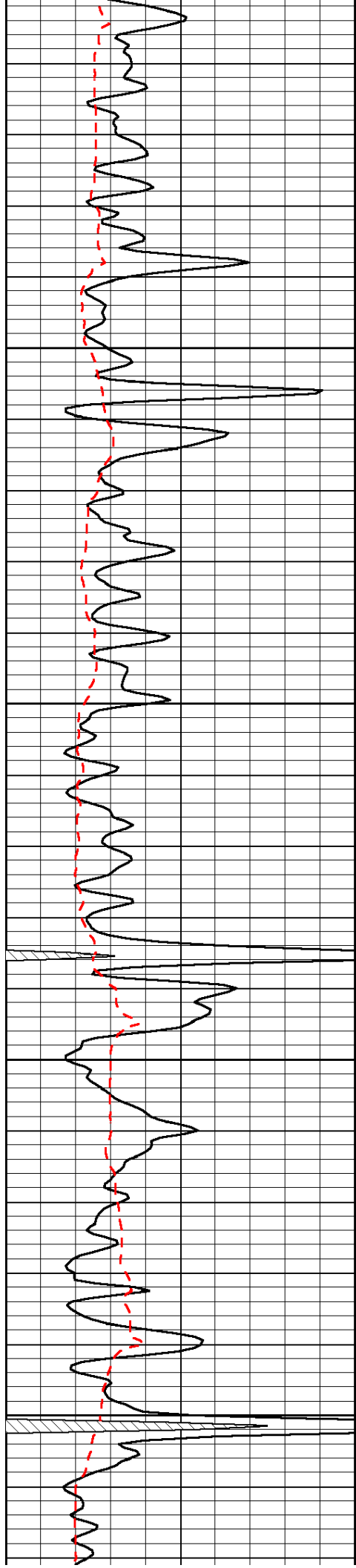


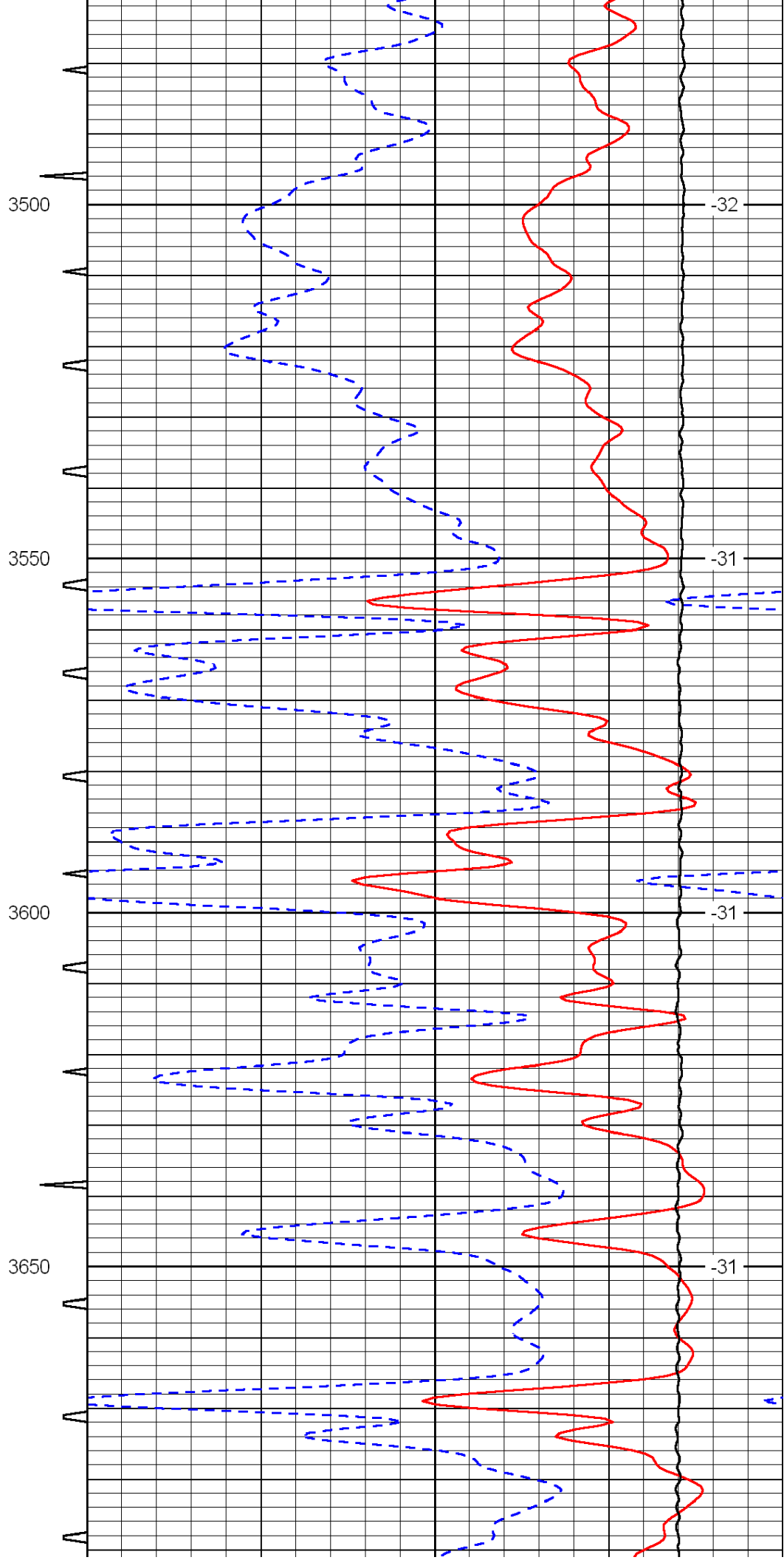
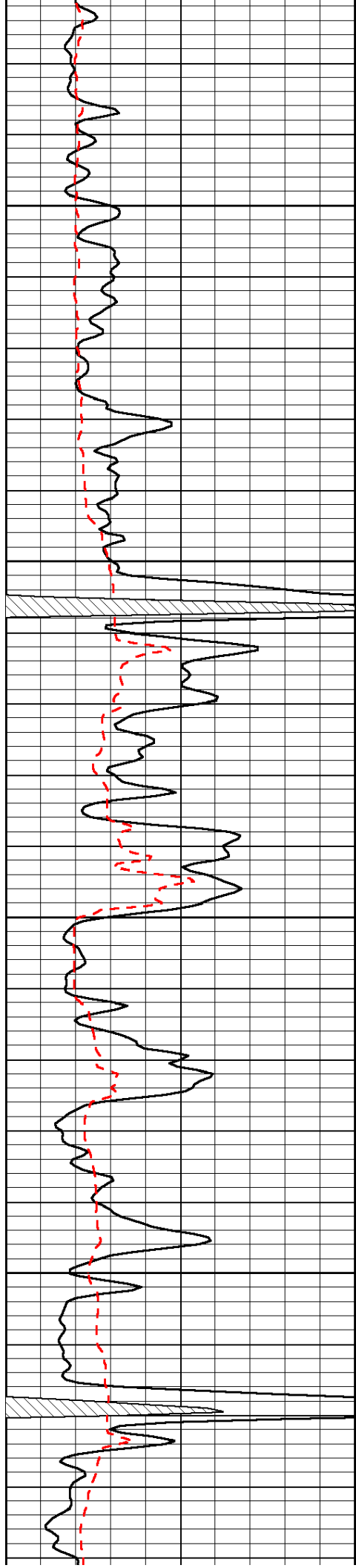


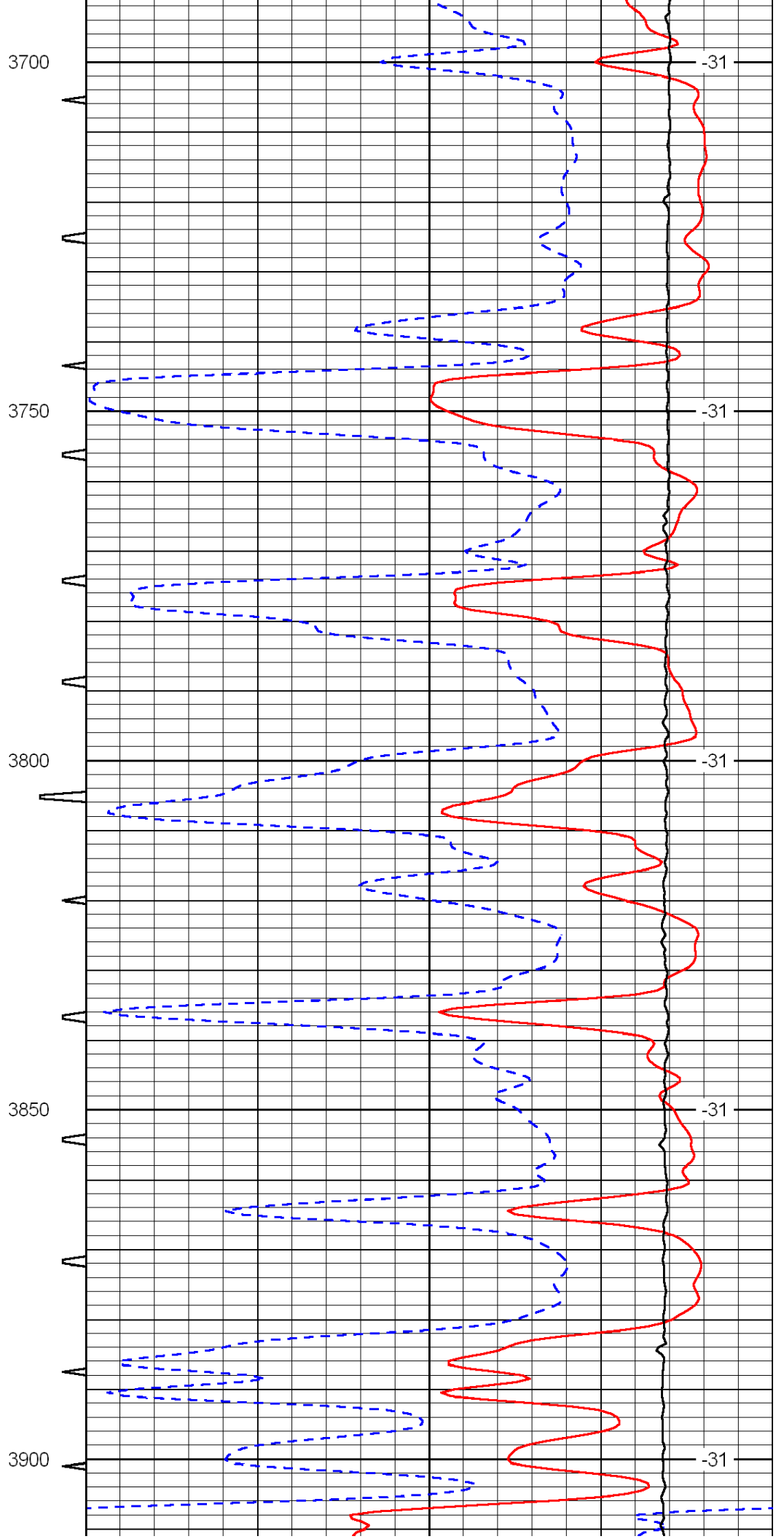
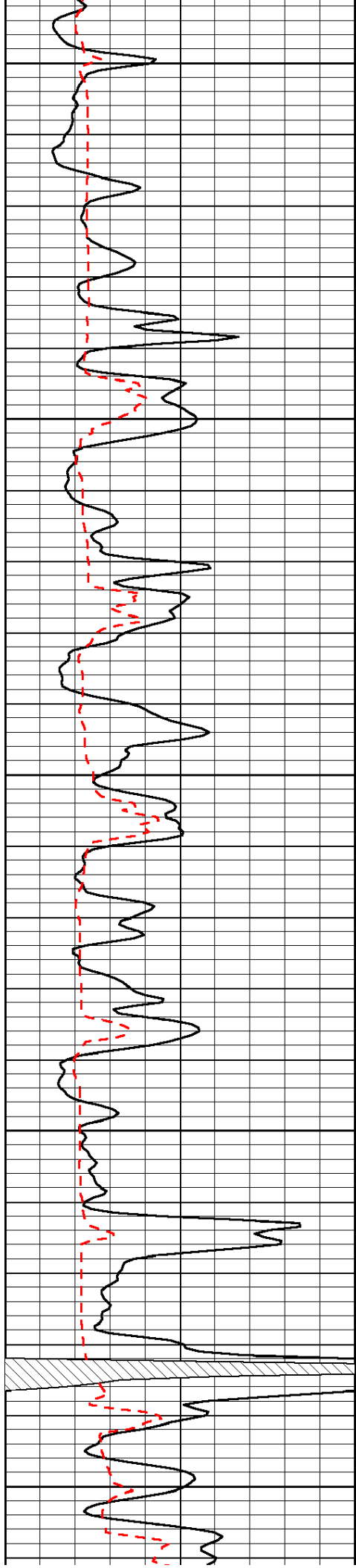


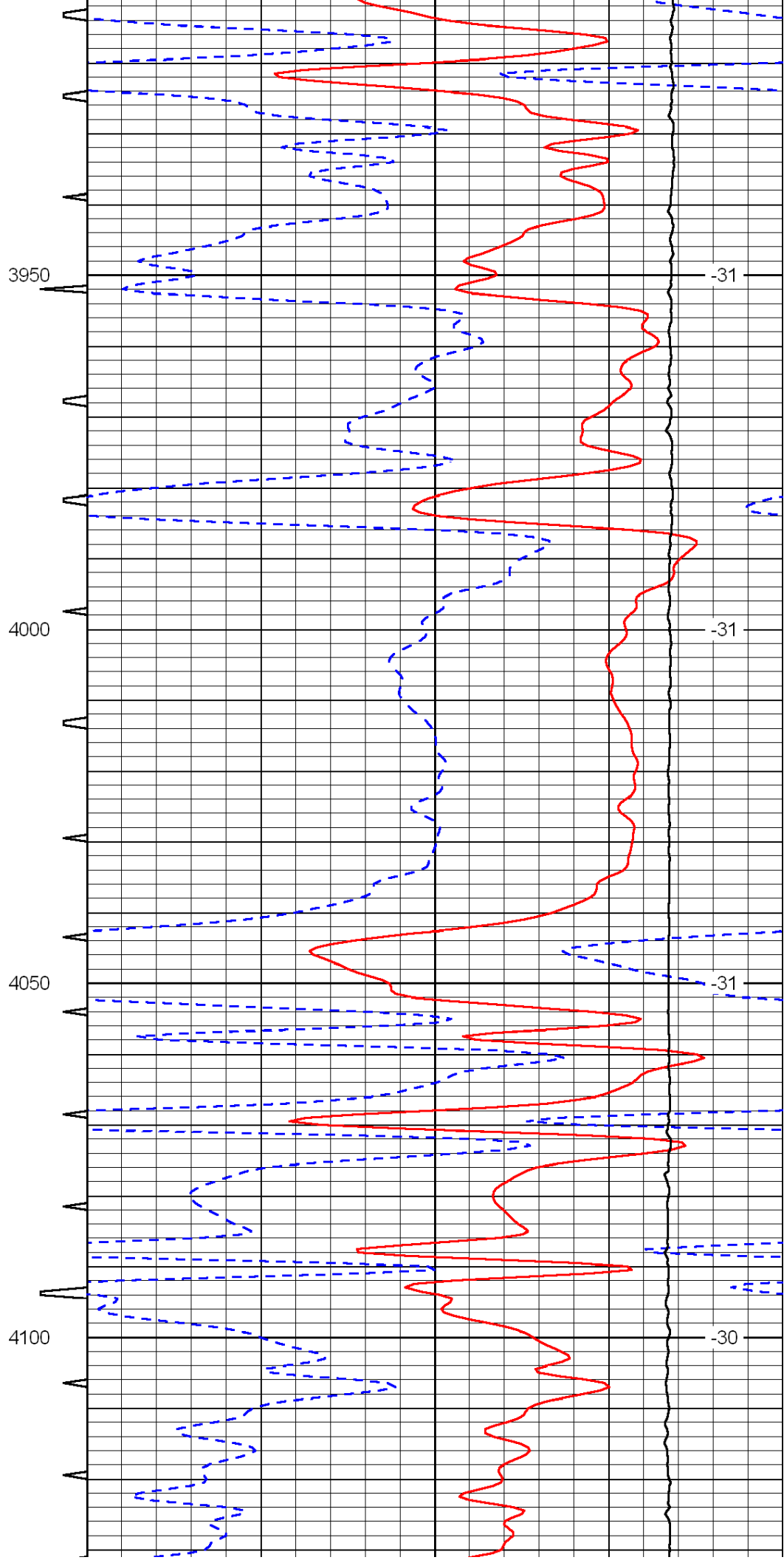
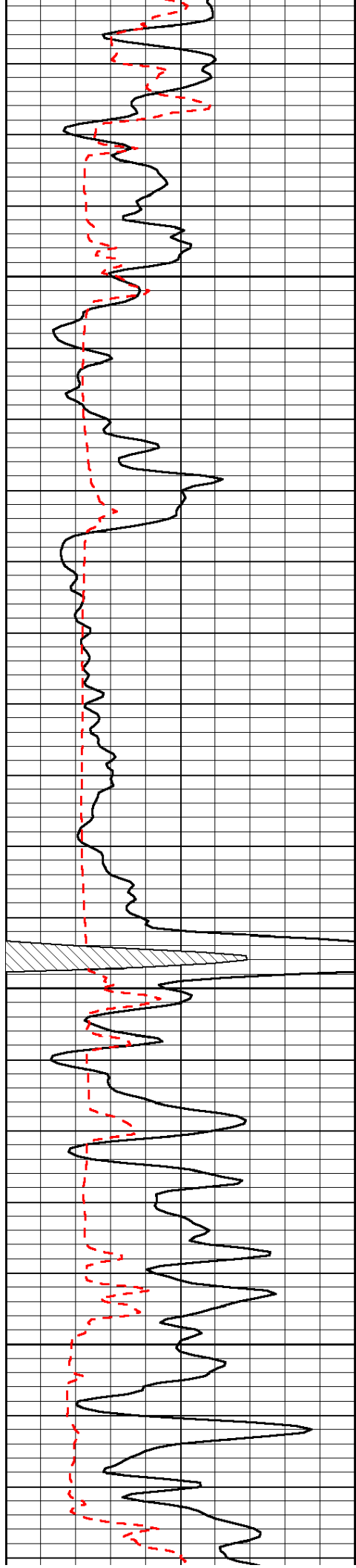


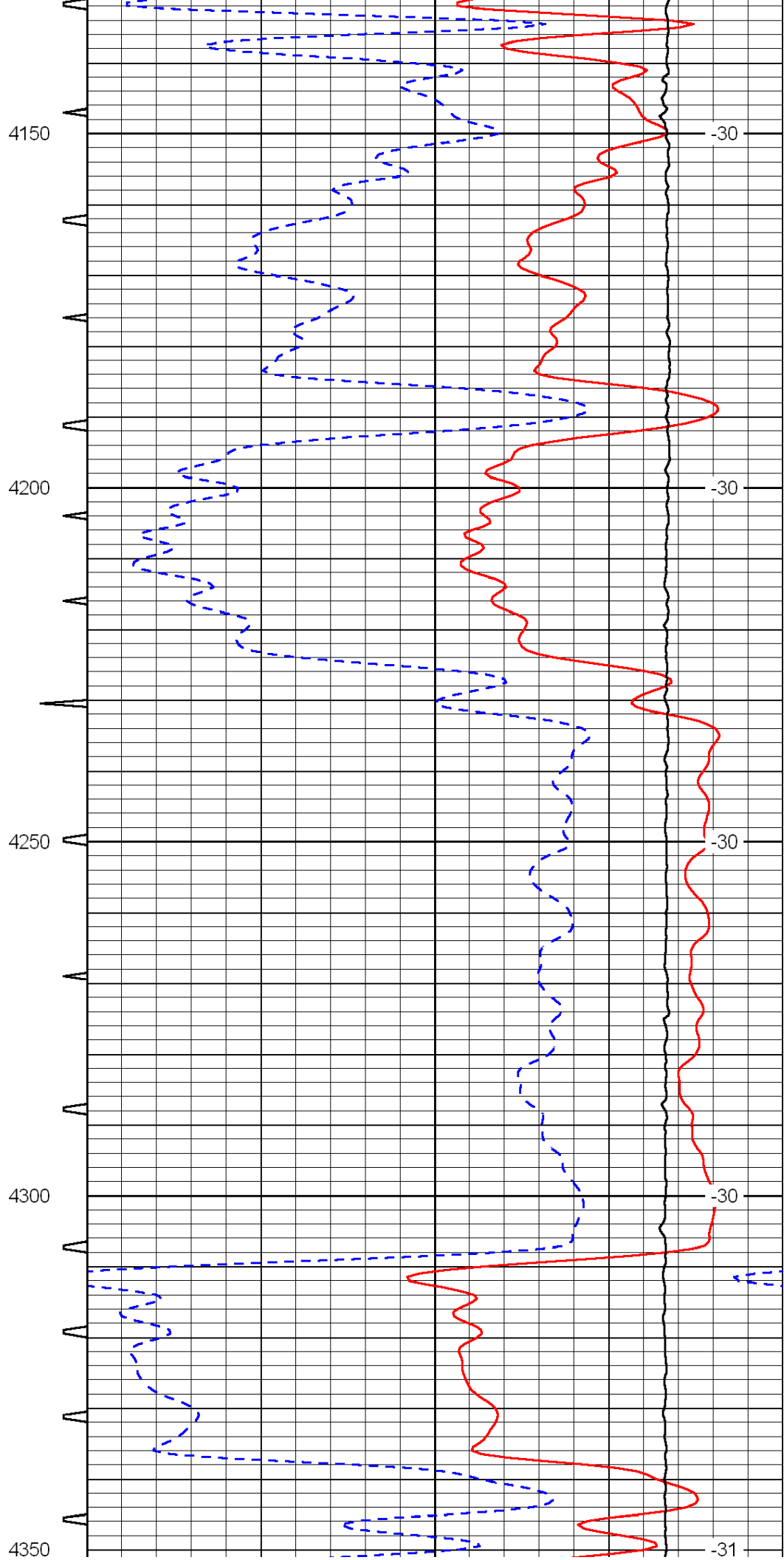
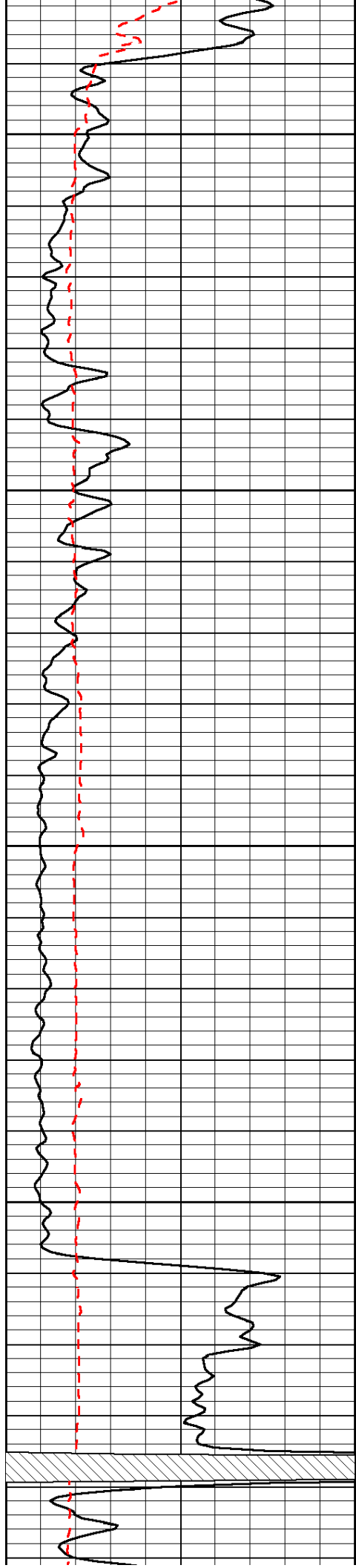


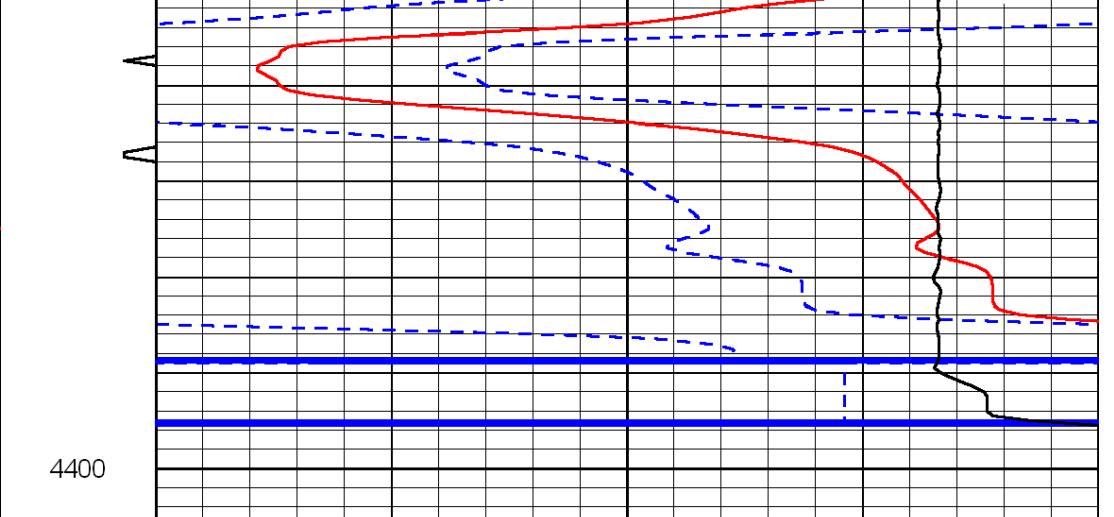
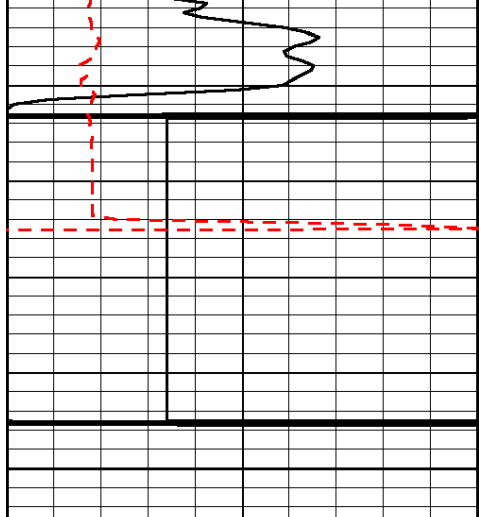












4400

0	Gamma Ray	150	Sonic Int	140	Delta Time (usec/ft)	40
150	Gamma Ray	300	5	0	SPOR	-10
6	Caliper (GAPI)	16		15000	LTEN (lb)	0

LSPD