



# Dual Induction Log

DIGITAL LOG (785) 625-3858

API No.	15-065-23699-00-00	
Company	Vincent Oil Corporation	
Well	Worcester #1-32	
Field	Harmony	
County	Graham	State
		Kansas
Location	NE SW SE SW 450' FSL & 1720' FWL	
Sec: 32	Twp: 17S	Rge: 22W
Permanent Datum	Ground Level	Elevation 2135
Log Measured From	Kelly Bushing	5 Ft. Above Perm. Datum
Drilling Measured From	Kelly Bushing	
		Other Services CNL / CDL MEL / BHCS
		Elevation K.B. 2140 D.F. 2135 G.L. 2135

Date	11/13/2010
Run Number	One
Depth Driller	3650
Depth Logger	3656
Bottom Logged Interval	3655
Top Log Interval	200
Casing Driller	8.625 @ 218
Casing Logger	223
Bit Size	7.875
Type Fluid in Hole	Chemical
Salinity, ppm CL	1600
Density / Viscosity	9.3 67
pH / Fluid Loss	9.8 6.4
Source of Sample	Flowline
Rm @ Meas. Temp	0.60 @ 50
Rmf @ Meas. Temp	0.45 @ 50
Rmc @ Meas. Temp	0.81 @ 50
Source of Rmf / Rmc	Charts
Rm @ BHT	0.26 @ 115
Operating Rig Time	4 Hours
Max Rec. Temp. F	115
Equipment Number	17
Location	Hays
Recorded By	R. Barnhart
Witnessed By	Mike Maune

<<< Fold Here >>>

All interpretations are opinions based on inferences from electrical or other measurements and we cannot and do not guarantee the accuracy or correctness of any interpretation, and we shall not, except in the case of gross or willful negligence on our part, be liable or responsible for any loss, costs, damages, or expenses incurred or sustained by anyone resulting from any interpretation made by any of our officers, agents or employees. These interpretations are also subject to our general terms and conditions set out in our current Price Schedule.

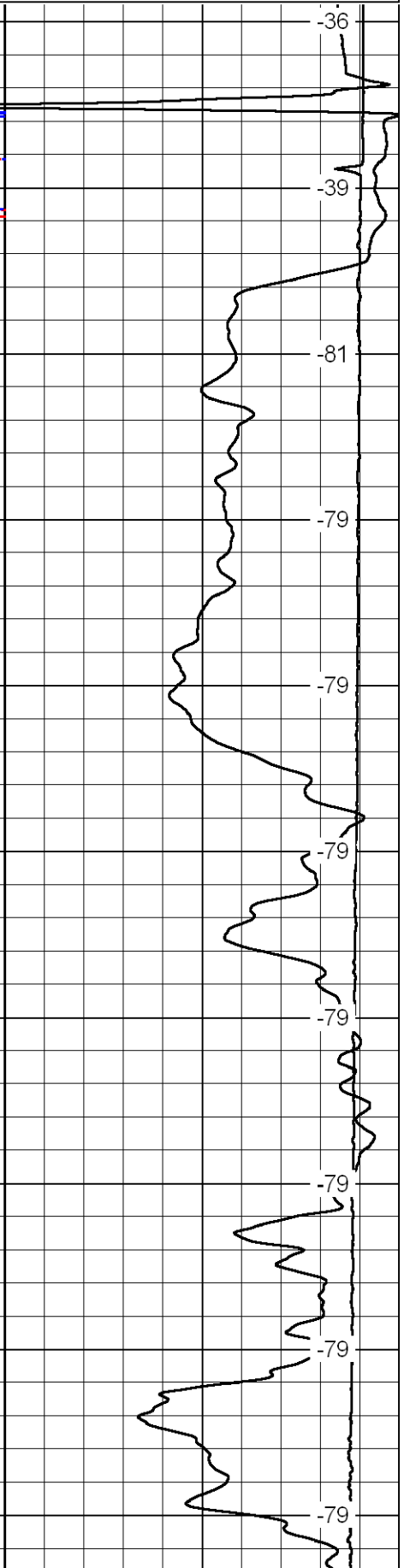
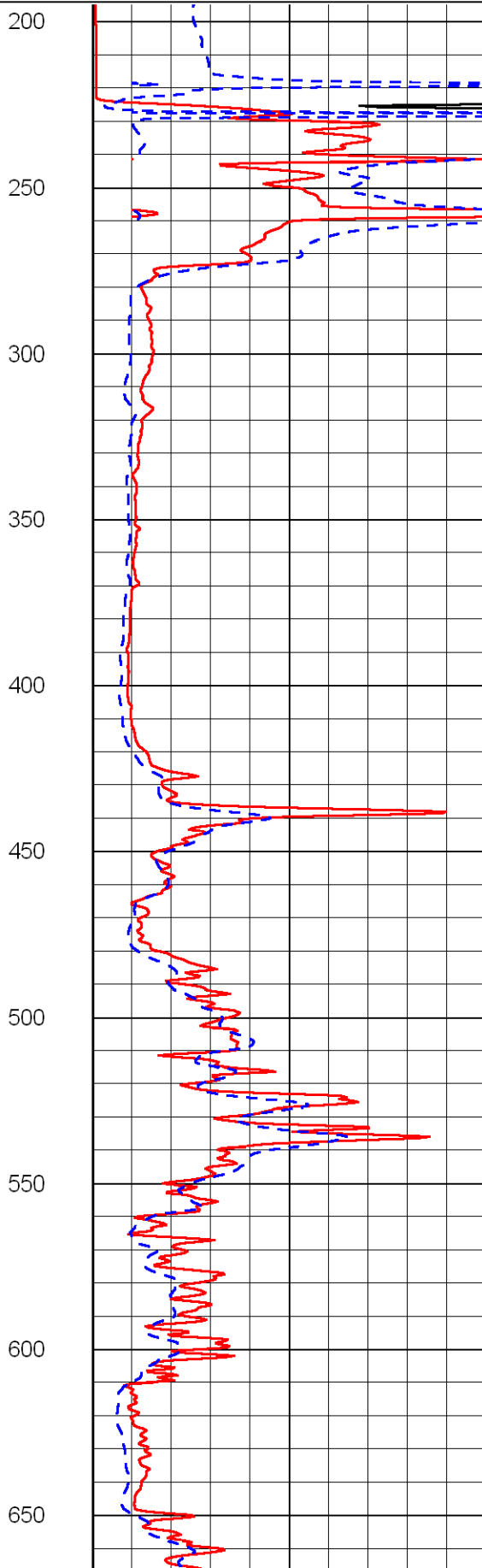
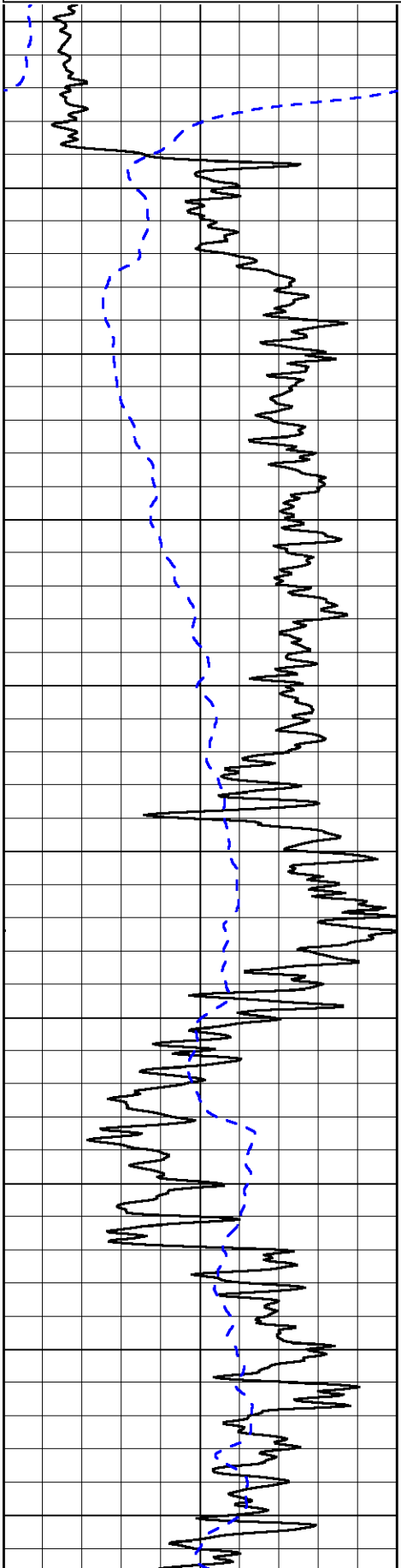
### Comments

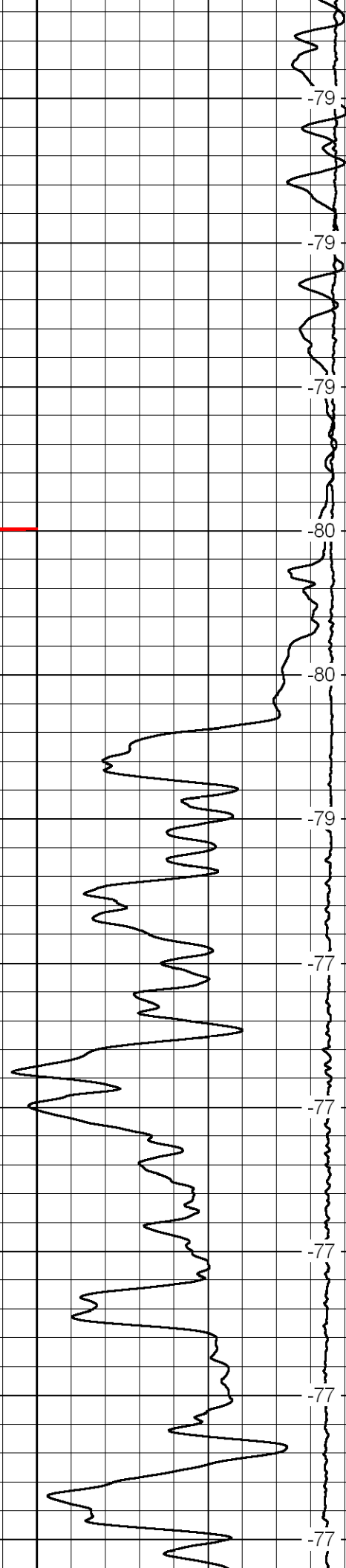
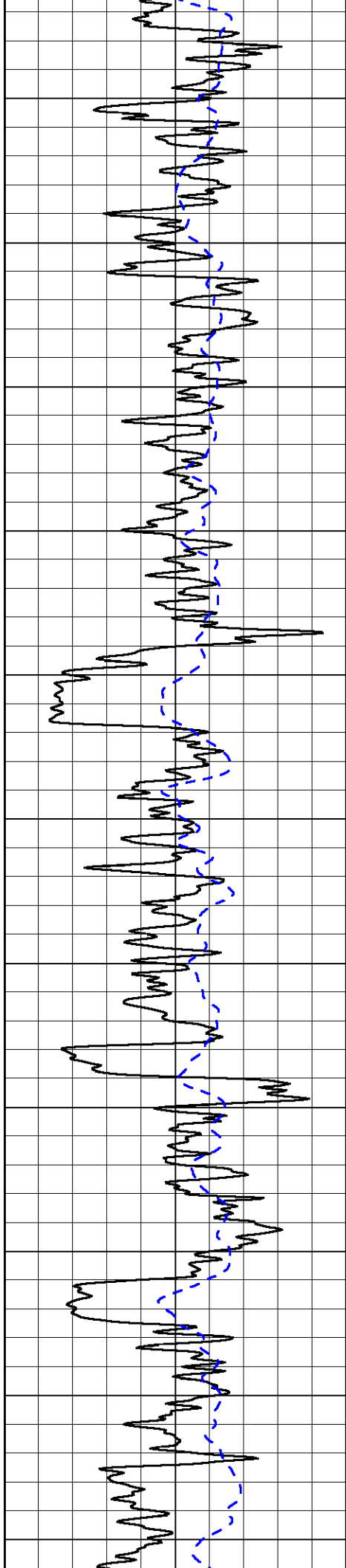
Thank you for using Log-Tech, Inc.  
 (785) 625-3858  
 Hill City, KS:  
 2N, 2 1/2E, N into

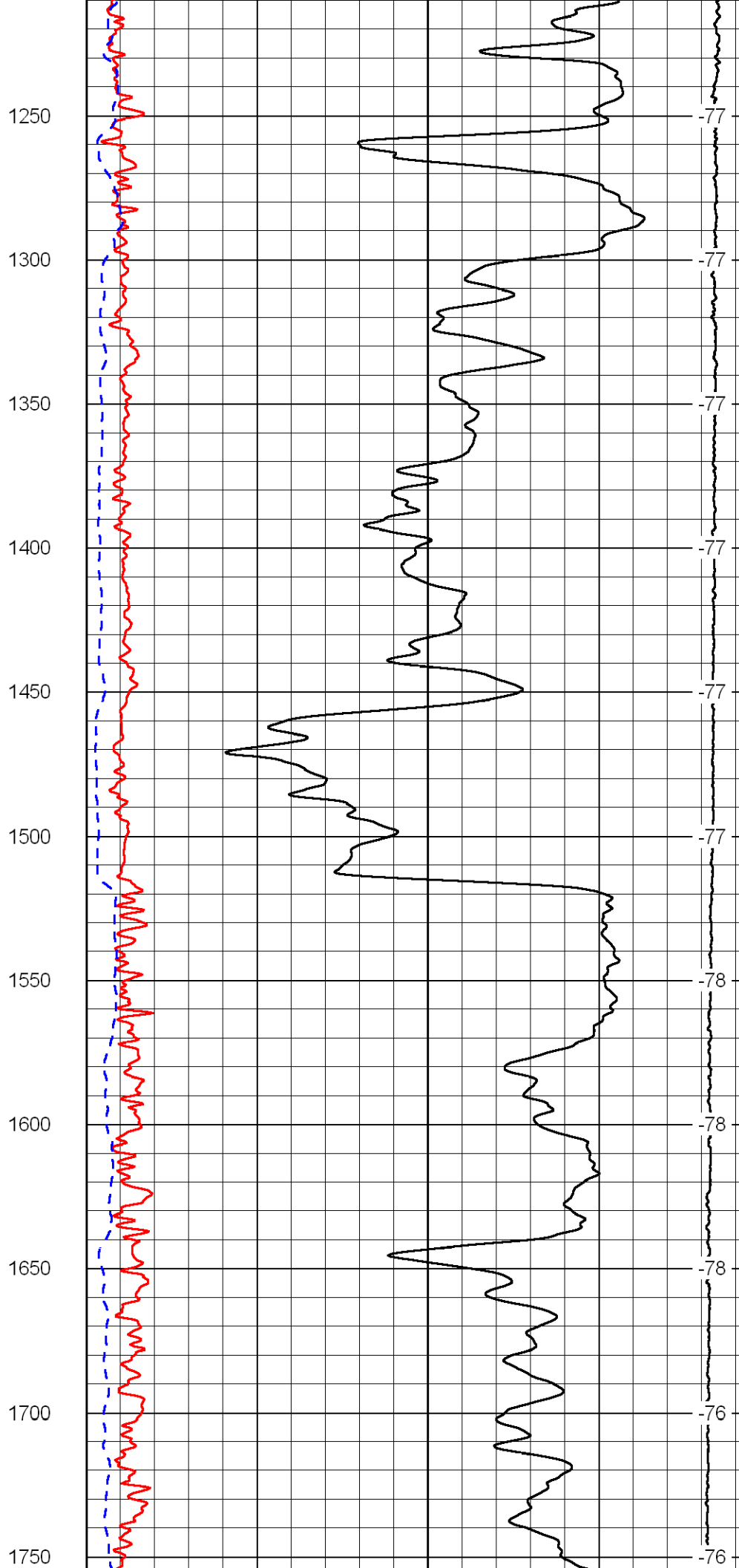
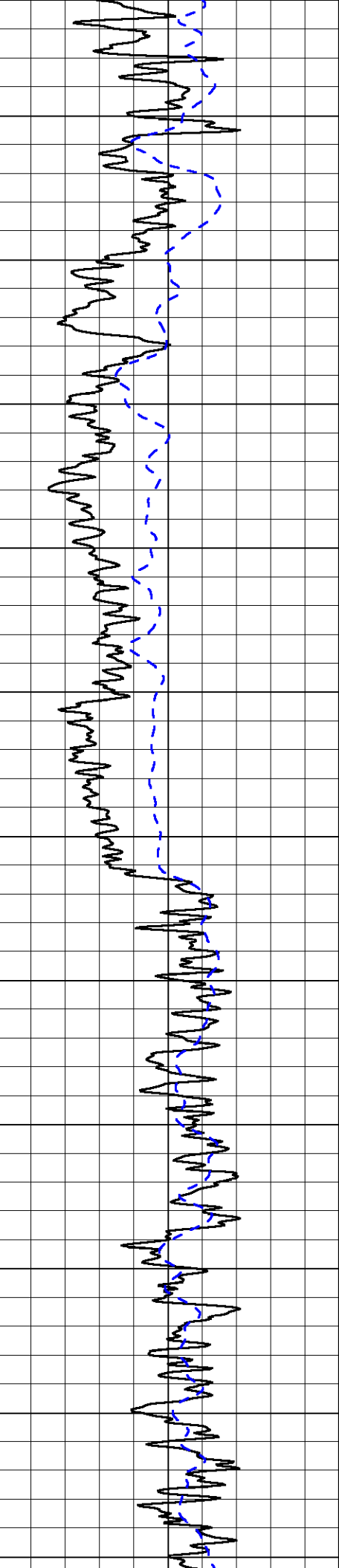
Database File: vincent\_worcester1-32hdrpt.db  
 Dataset Pathname: dil/@00028950  
 Presentation Format: dil2in  
 Dataset Creation: Sat Nov 13 12:17:36 2010  
 Charted by: Depth in Feet scaled 1:600

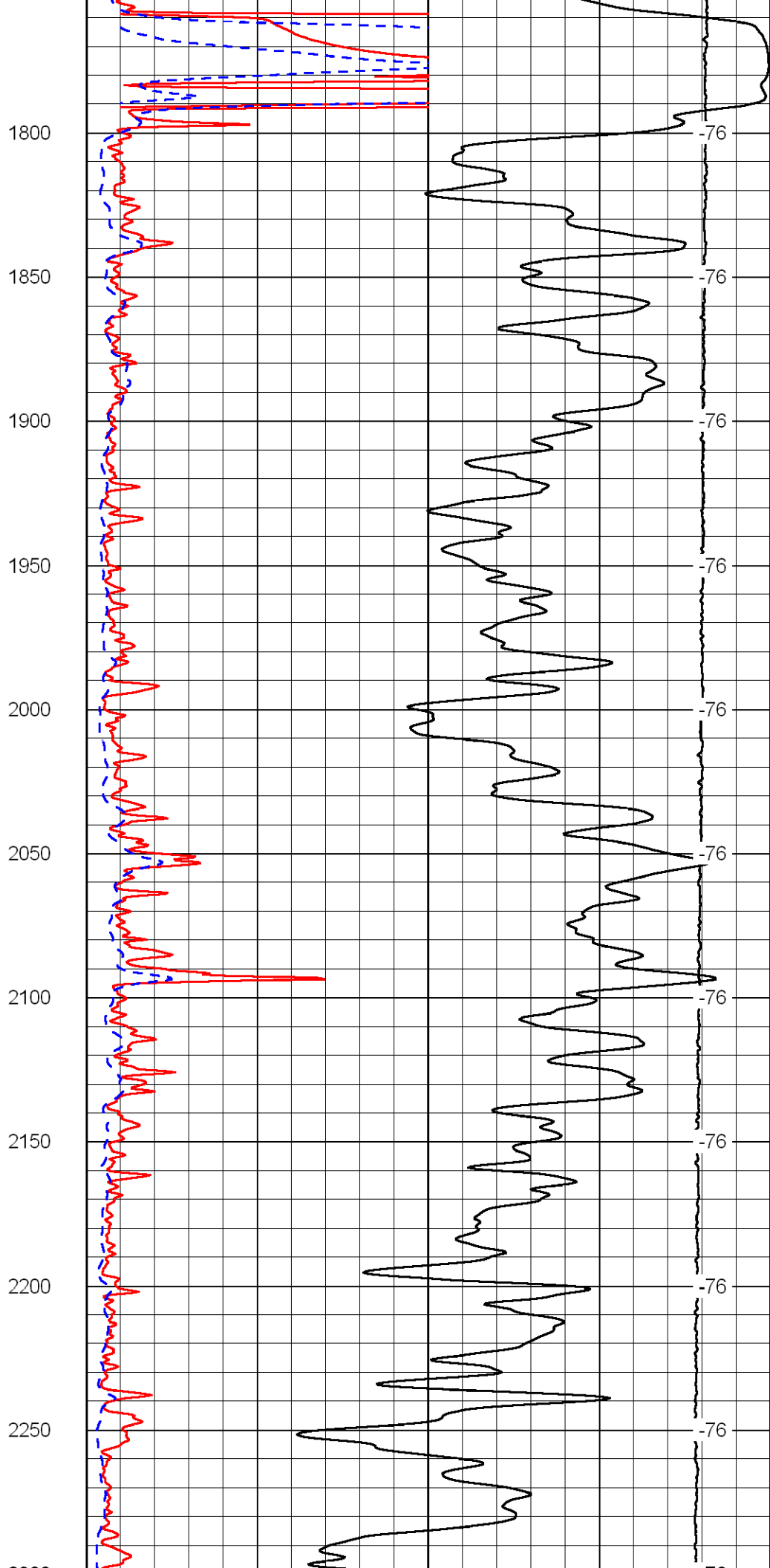
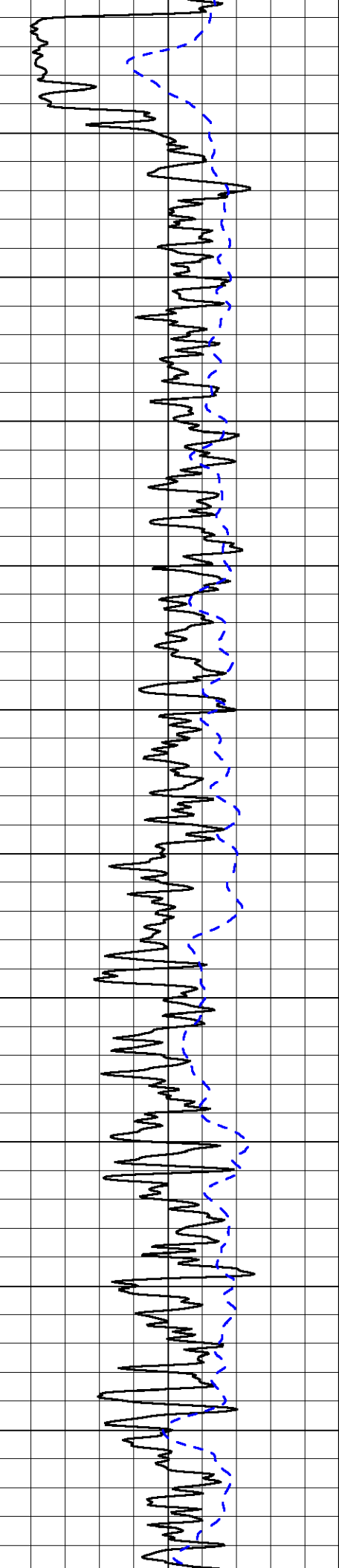
0	Gamma Ray	150
-200	SP	0

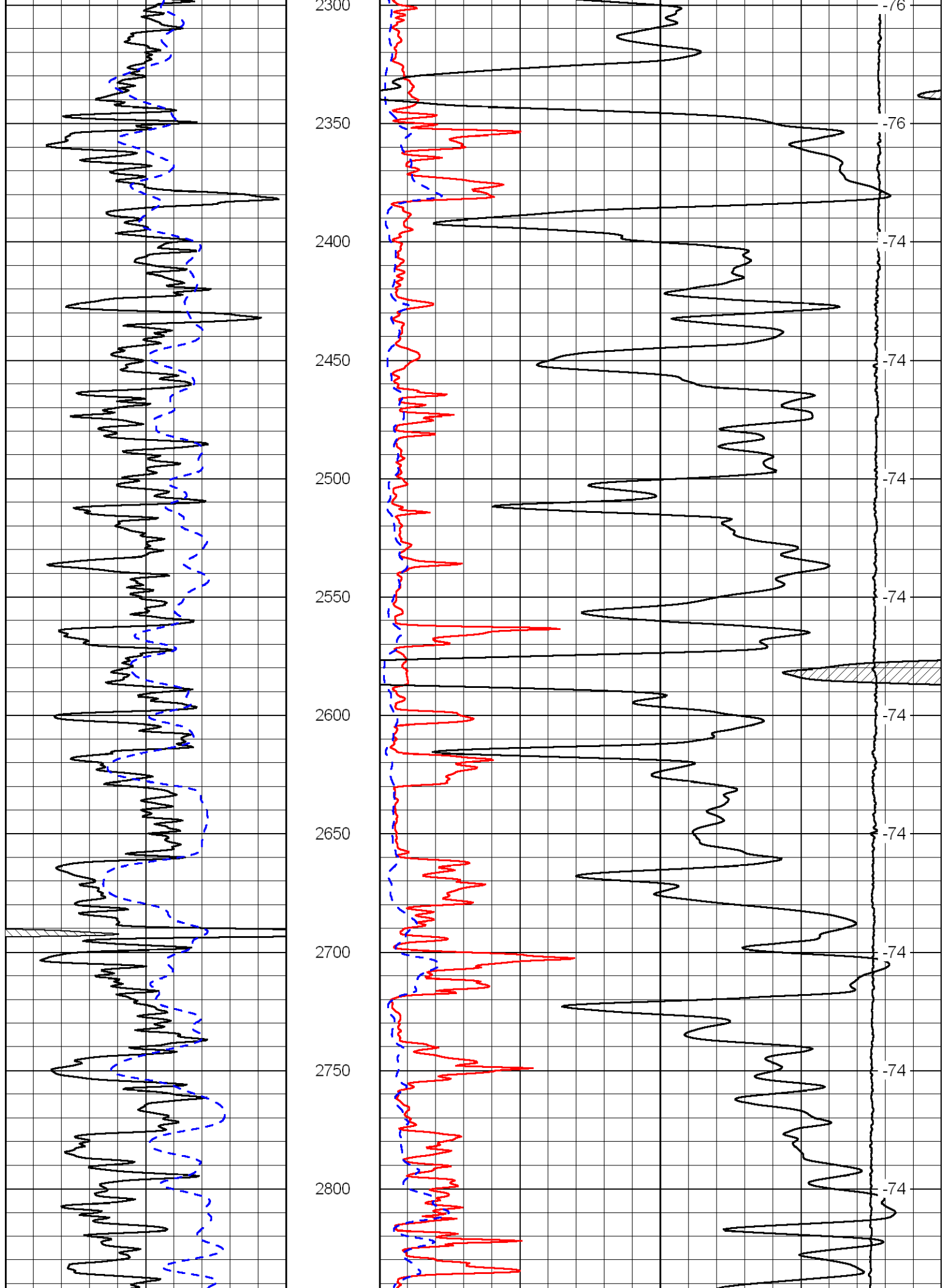
0	Shallow Resistivity	50
0	Deep Resistivity	50
1000	Conductivity	0
15000	Line Tension	0
50	Shallow Resistivity	500
50	Deep Resistivity	500

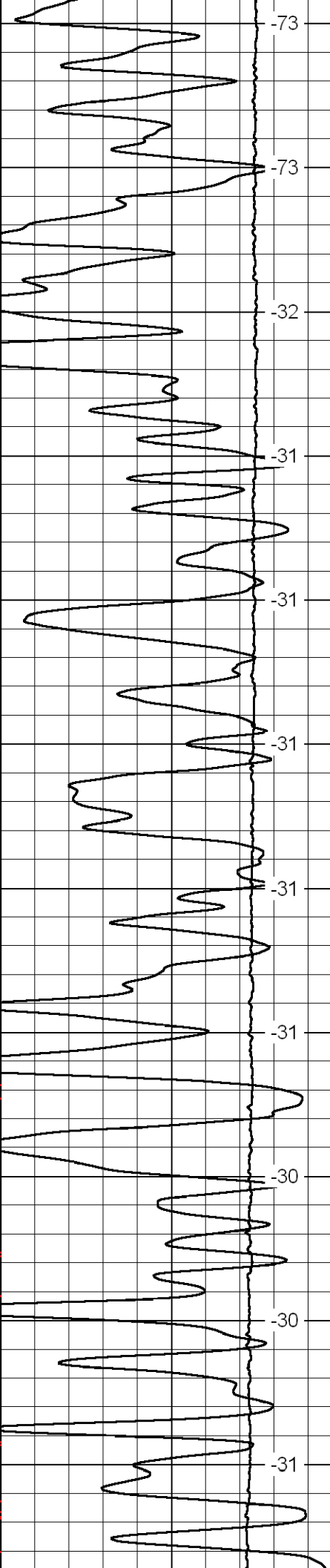
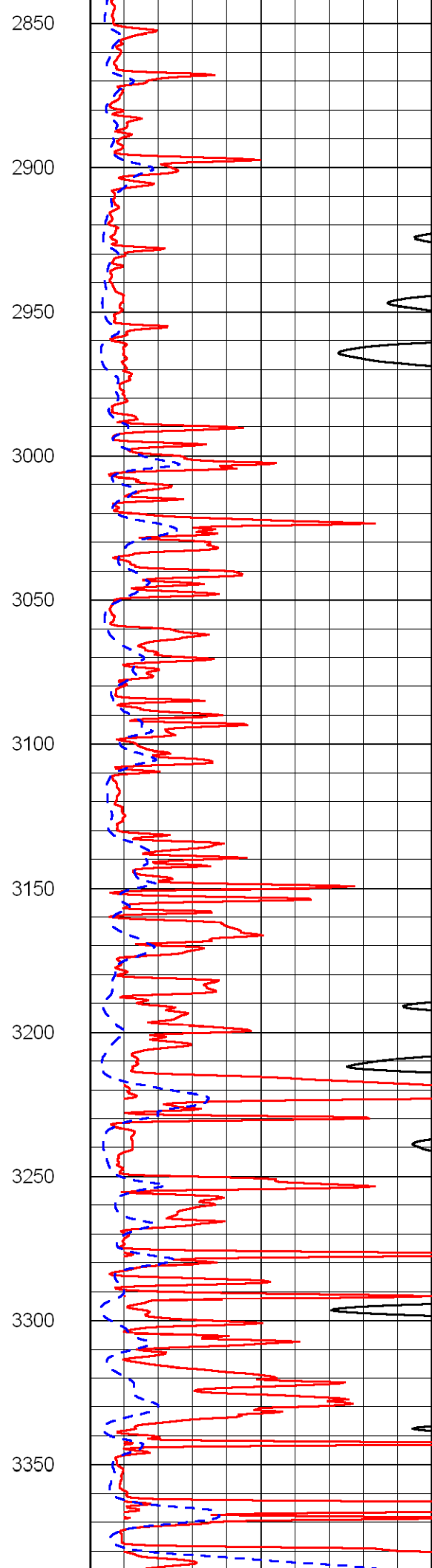
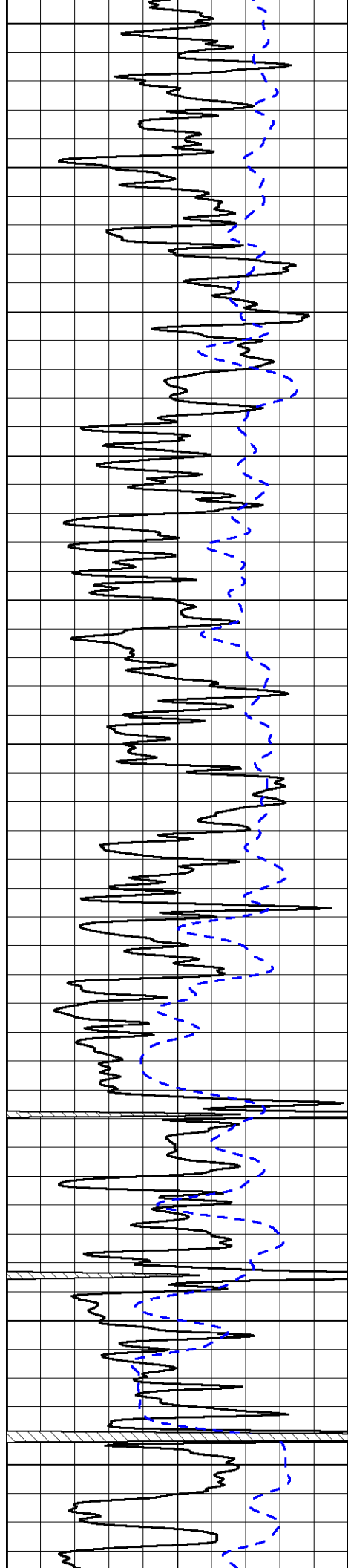


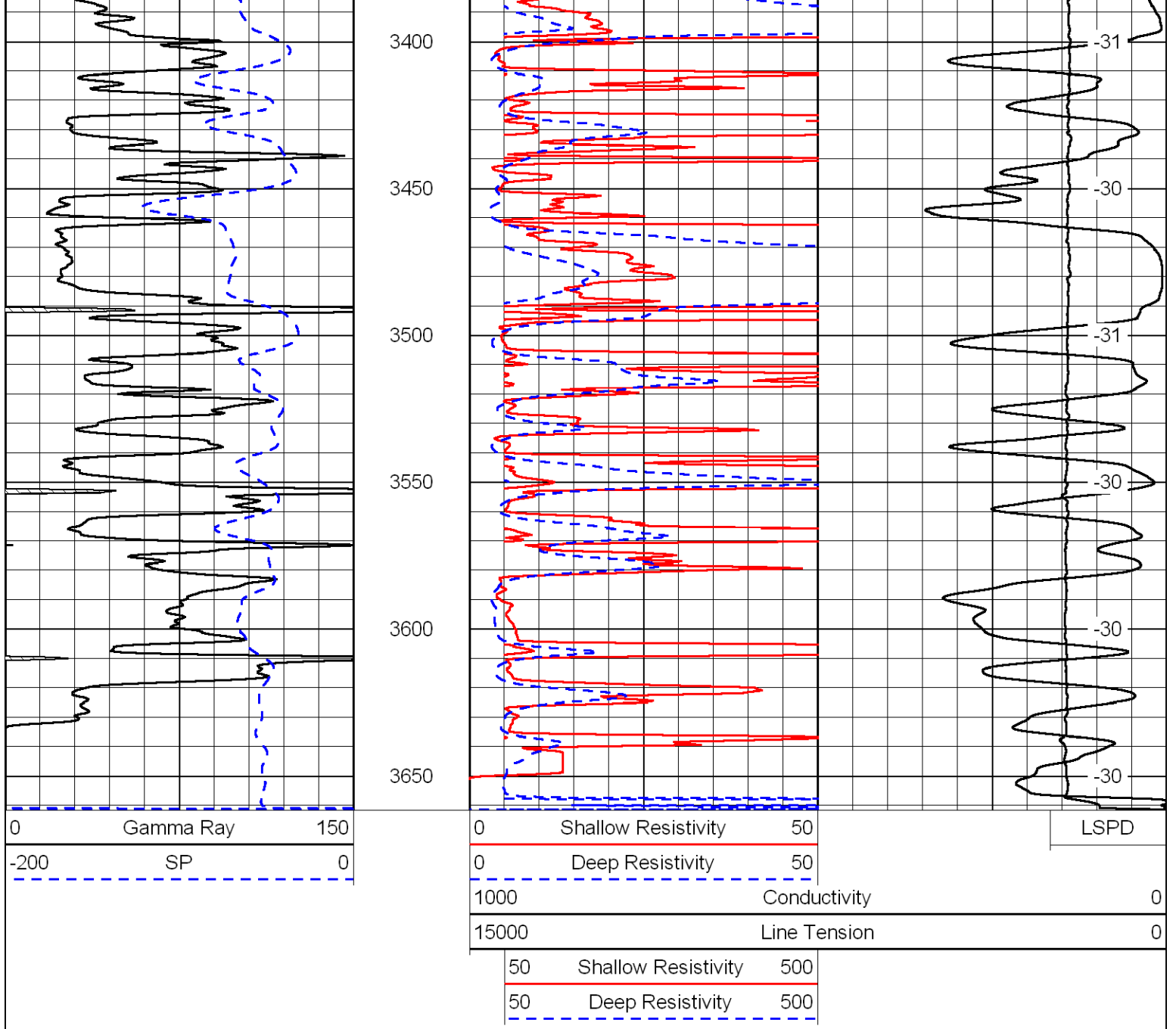




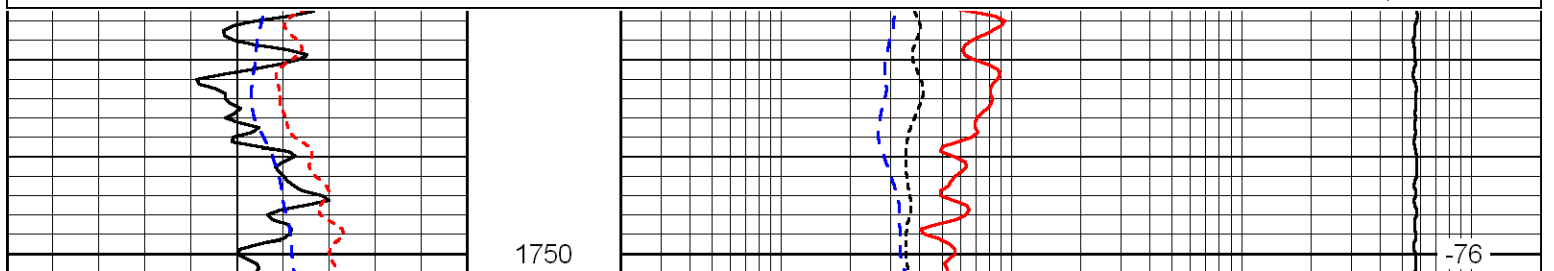
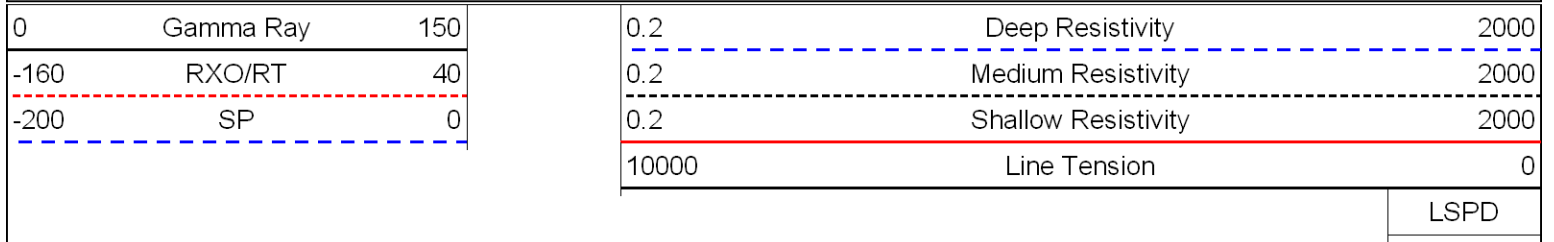


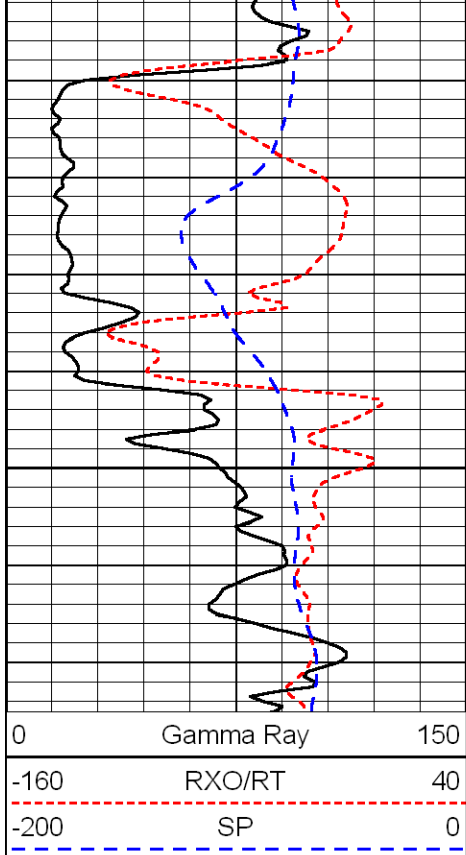






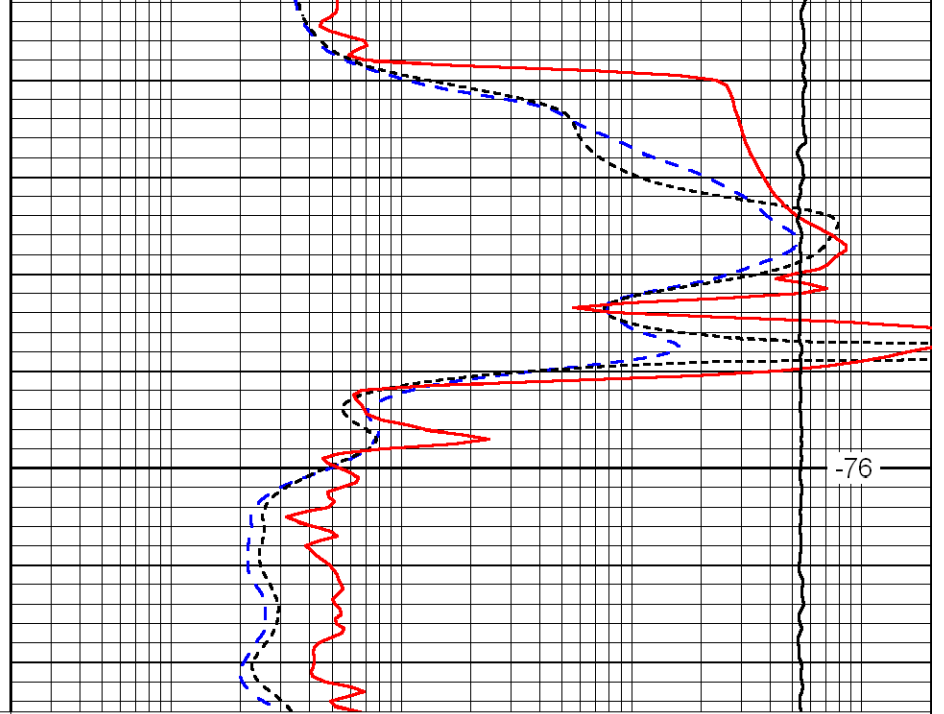
Database File:            vincent\_worcester1-32hdrpt.db  
 Dataset Pathname:        dil/@00028950  
 Presentation Format:     dil  
 Dataset Creation:        Sat Nov 13 12:17:36 2010  
 Charted by:              Depth in Feet scaled 1:240





0	Gamma Ray	150
-160	RXO/RT	40
-200	SP	0

1800



0.2	Deep Resistivity	2000
0.2	Medium Resistivity	2000
0.2	Shallow Resistivity	2000
10000	Line Tension	0

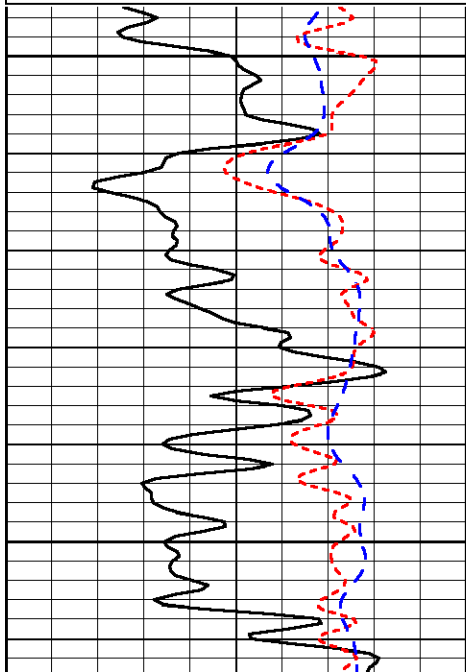
LSPD

Database File: vincent\_worcester1-32hdrpt.db  
 Dataset Pathname: dil/@00028950  
 Presentation Format: dil  
 Dataset Creation: Sat Nov 13 12:17:36 2010  
 Charted by: Depth in Feet scaled 1:240

0	Gamma Ray	150
-160	RXO/RT	40
-200	SP	0

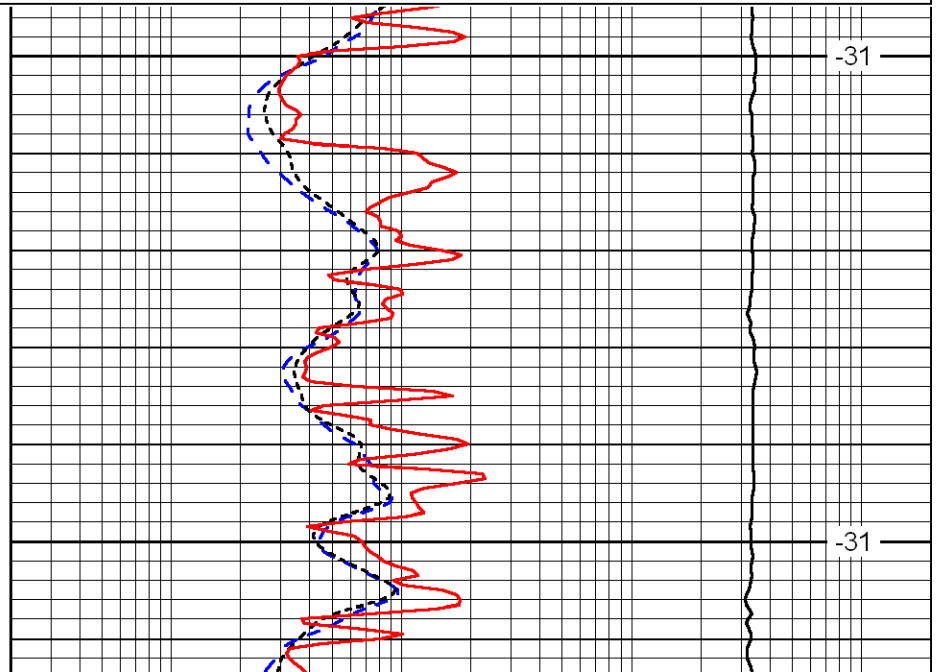
0.2	Deep Resistivity	2000
0.2	Medium Resistivity	2000
0.2	Shallow Resistivity	2000
10000	Line Tension	0

LSPD



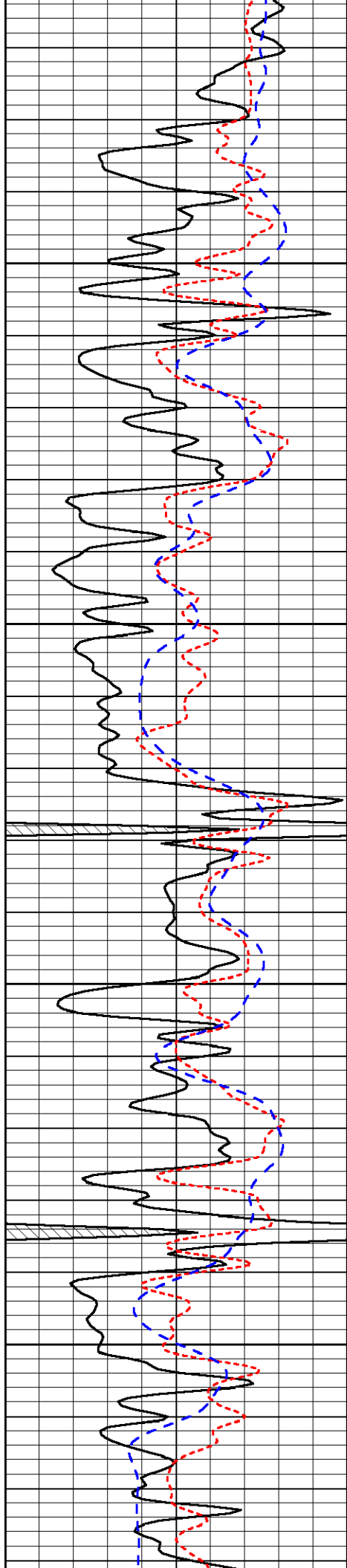
3050

3100



-31

-31

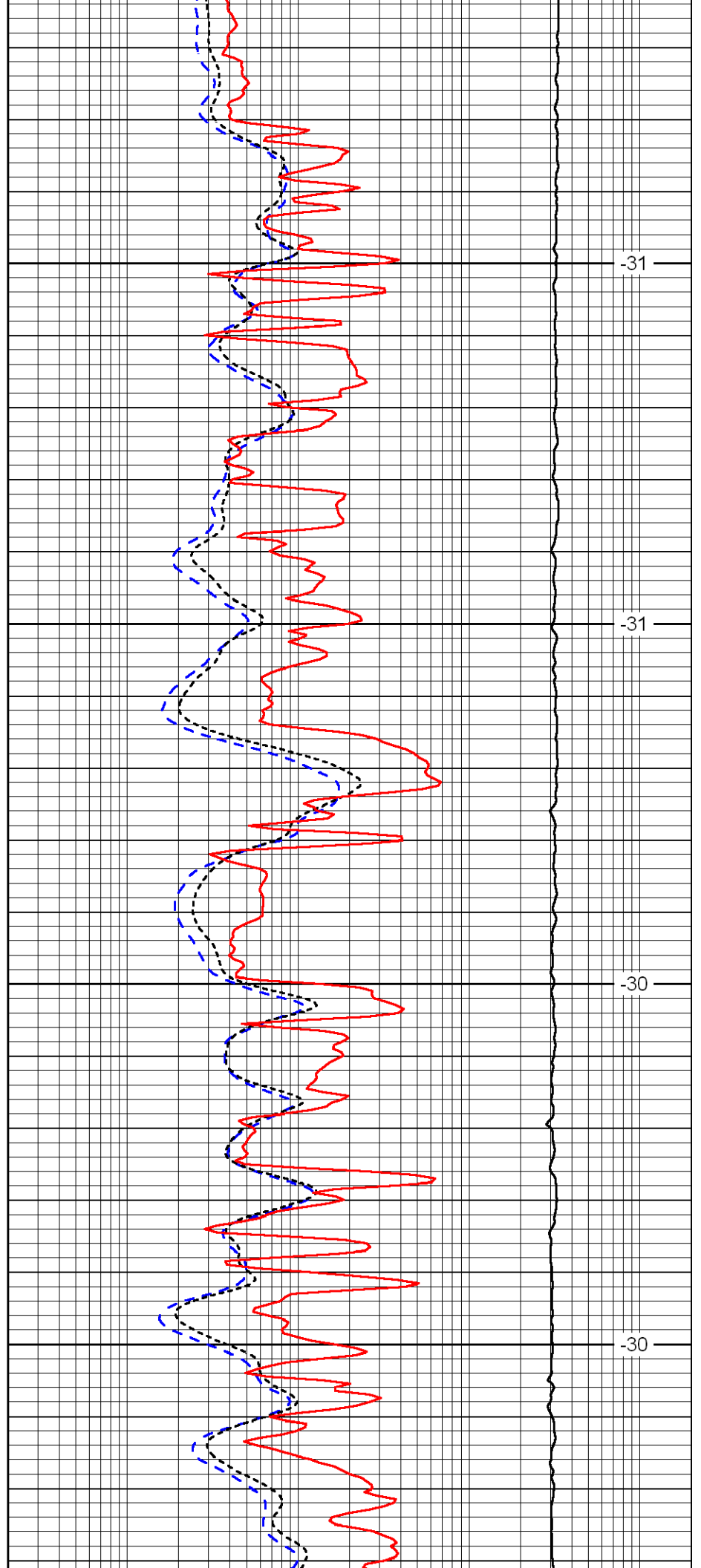


3150

3200

3250

3300

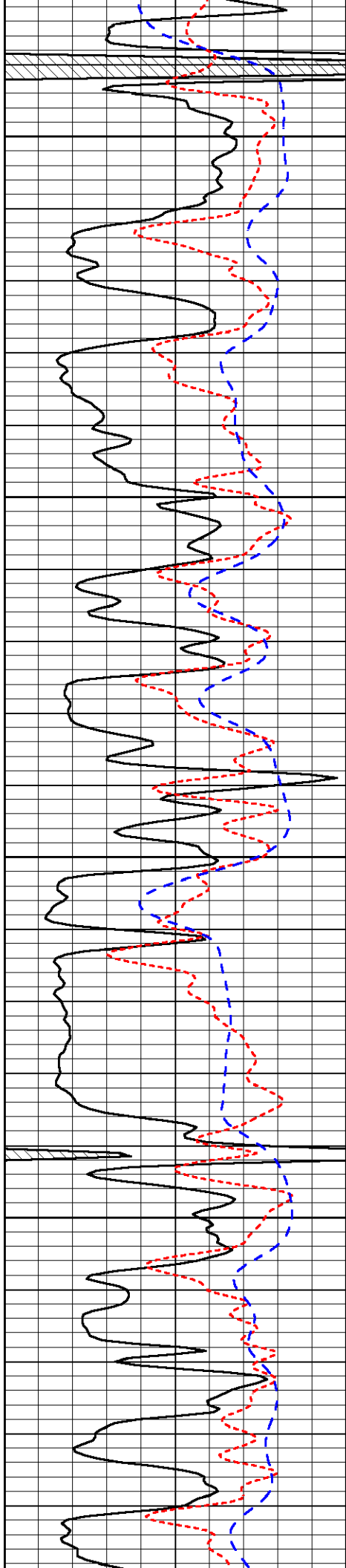


-31

-31

-30

-30

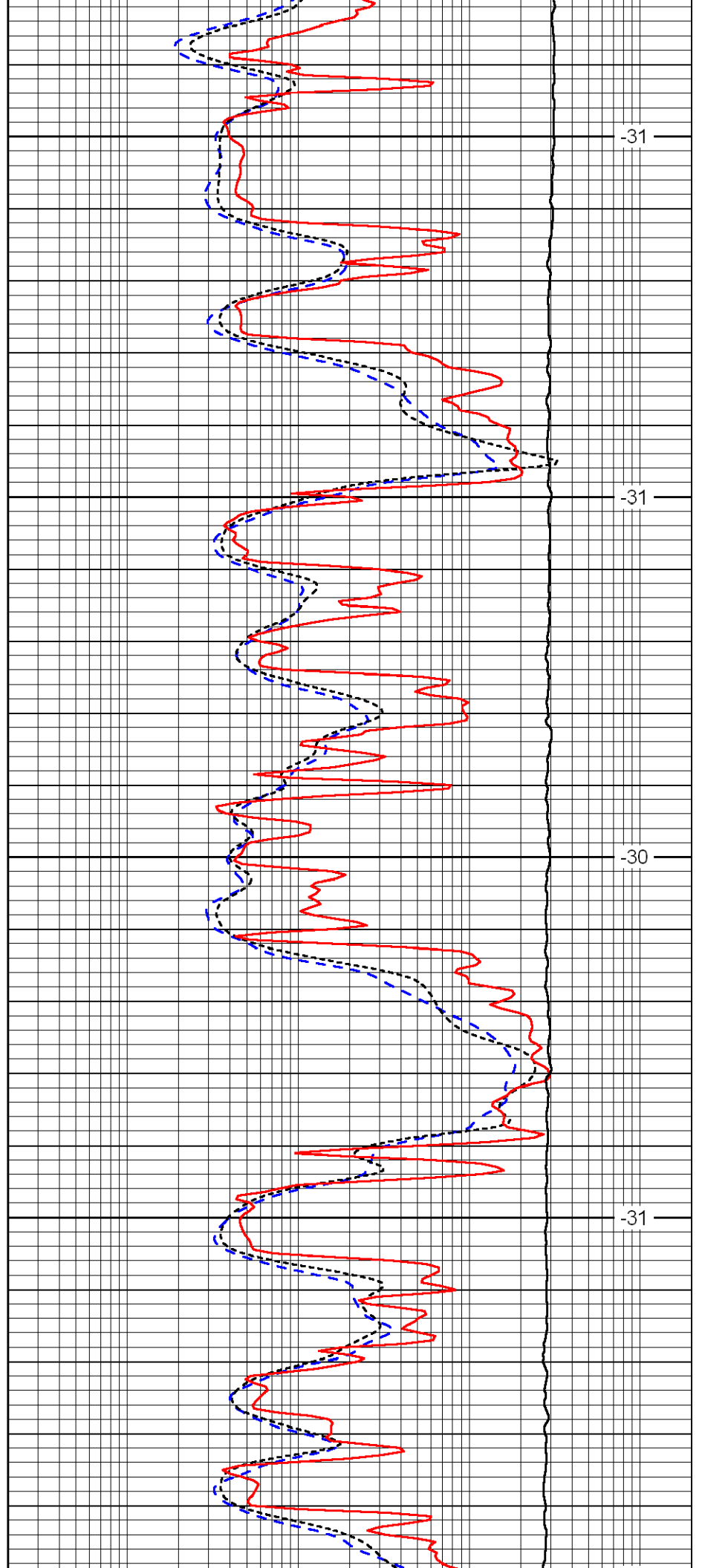


3350

3400

3450

3500

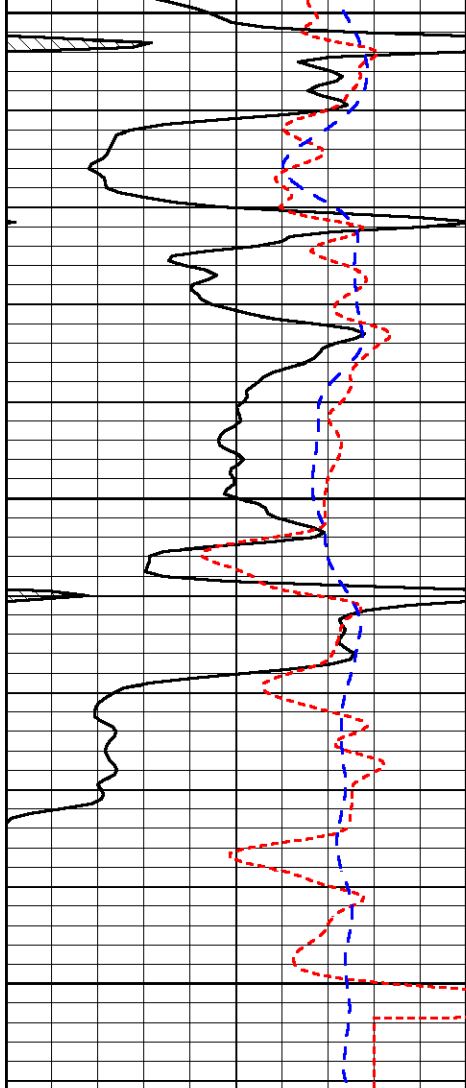


-31

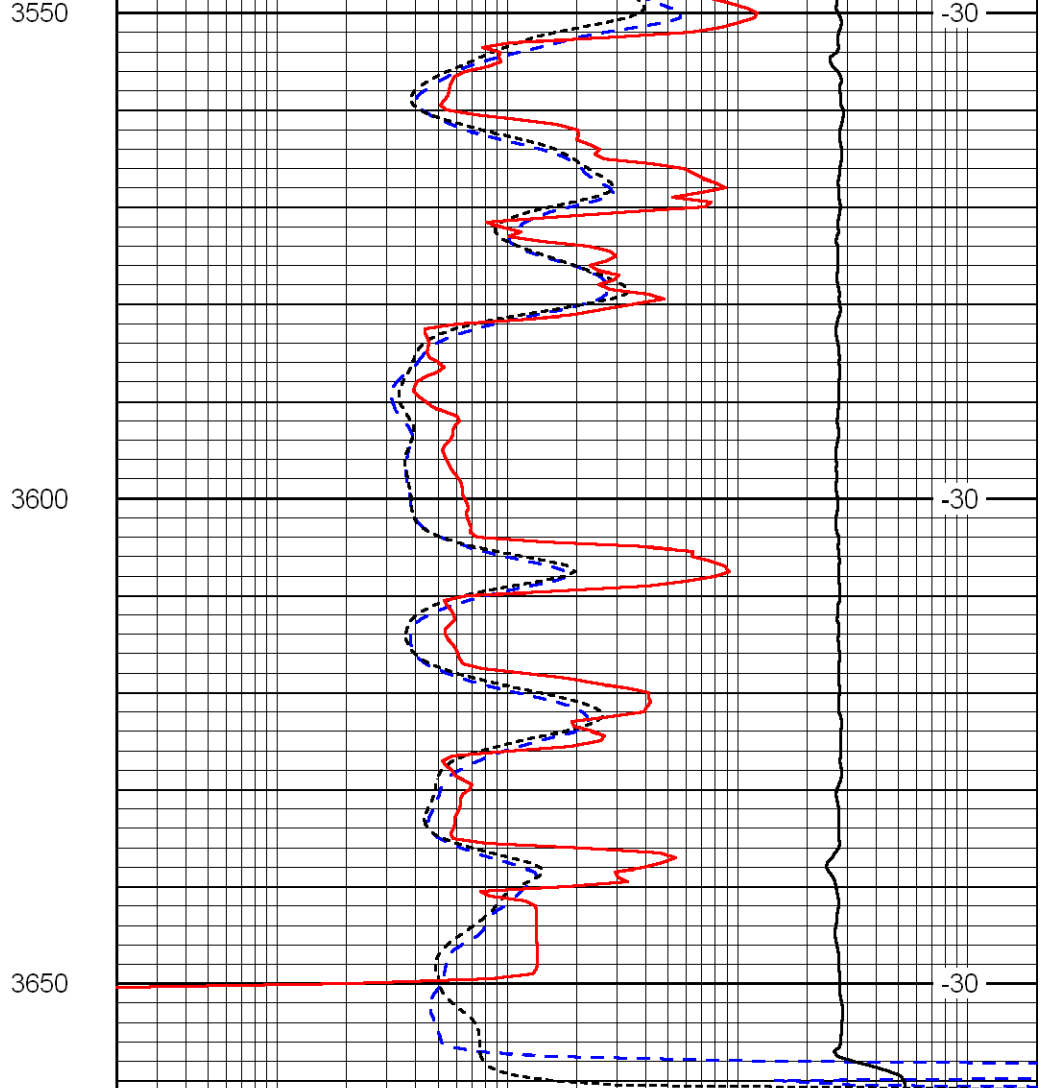
-31

-30

-31



0	Gamma Ray	150
-160	RXO/RT	40
-200	SP	0



0.2	Deep Resistivity	2000
0.2	Medium Resistivity	2000
0.2	Shallow Resistivity	2000
10000	Line Tension	0

LSPD