



Microresistivity Log

DIGITAL LOG (785) 625-3858

API No.	15-065-23699-00-00		
Company	Vincent Oil Corporation		
Well	Worcester #1-32		
Field	Harmony		
County	Graham	State	Kansas
Location	NE SW SE SW 450' FSL & 1720' FWL		
Sec: 32	Twp: 17S	Rge: 22W	
Permanent Datum	Ground Level	Elevation 2135	Other Services CNL / CDL DIL / BHCS
Log Measured From	Kelly Bushing	5 Ft. Above Perm. Datum	
Drilling Measured From	Frotkelly Bushing		K.B. 2140 D.F. 2135 G.L. 2135

Date	11/13/2010	
Run Number	Two	
Depth Driller	3650	
Depth Logger	3656	
Bottom Logged Interval	3655	
Top Log Interval	3050	
Casing Driller	8.625 @ 218	
Casing Logger	223	
Bit Size	7.875	
Type Fluid in Hole	Chemical	
Salinity, ppm CL	1600	
Density / Viscosity	9.3	67
pH / Fluid Loss	9.8	6.4
Source of Sample	Flowline	
Rm @ Meas. Temp	0.60 @	50
Rmf @ Meas. Temp	0.45 @	50
Rmc @ Meas. Temp	0.81 @	50
Source of Rmf / Rmc	Charts	
Rm @ BHT	0.26 @	115
Operating Rig Time	4 Hours	
Max Rec. Temp. F	115	
Equipment Number	17	
Location	Hays	
Recorded By	R. Barnhart	
Witnessed By	Mike Maune	

<<< Fold Here >>>

All interpretations are opinions based on inferences from electrical or other measurements and we cannot and do not guarantee the accuracy or correctness of any interpretation, and we shall not, except in the case of gross or willful negligence on our part, be liable or responsible for any loss, costs, damages, or expenses incurred or sustained by anyone resulting from any interpretation made by any of our officers, agents or employees. These interpretations are also subject to our general terms and conditions set out in our current Price Schedule.

Comments

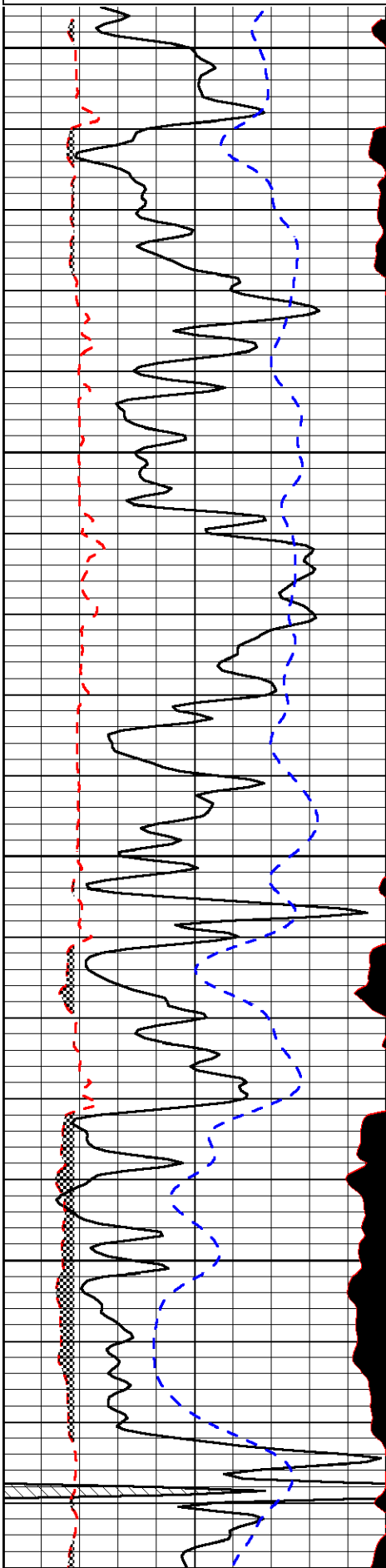
Thank you for using Log-Tech, Inc.
(785) 625-3858

Hill City, KS:
2N, 2 1/2E, N into

Database File:	vincent_worcester1-32hdrpt.db
Dataset Pathname:	dill@00028950
Presentation Format:	micro
Dataset Creation:	Sat Nov 13 12:17:36 2010
Charted by:	Depth in Feet scaled 1:240

0	Gamma Ray	150
6	MCAL (GAPI)	16
2.875	Mud Cake (GAPI)	7.875
-200	SP	0

0	Micro Inverse 1 X 1	40
0	Micro Normal 2"	40
10000	Line Weight	0
		LSPD

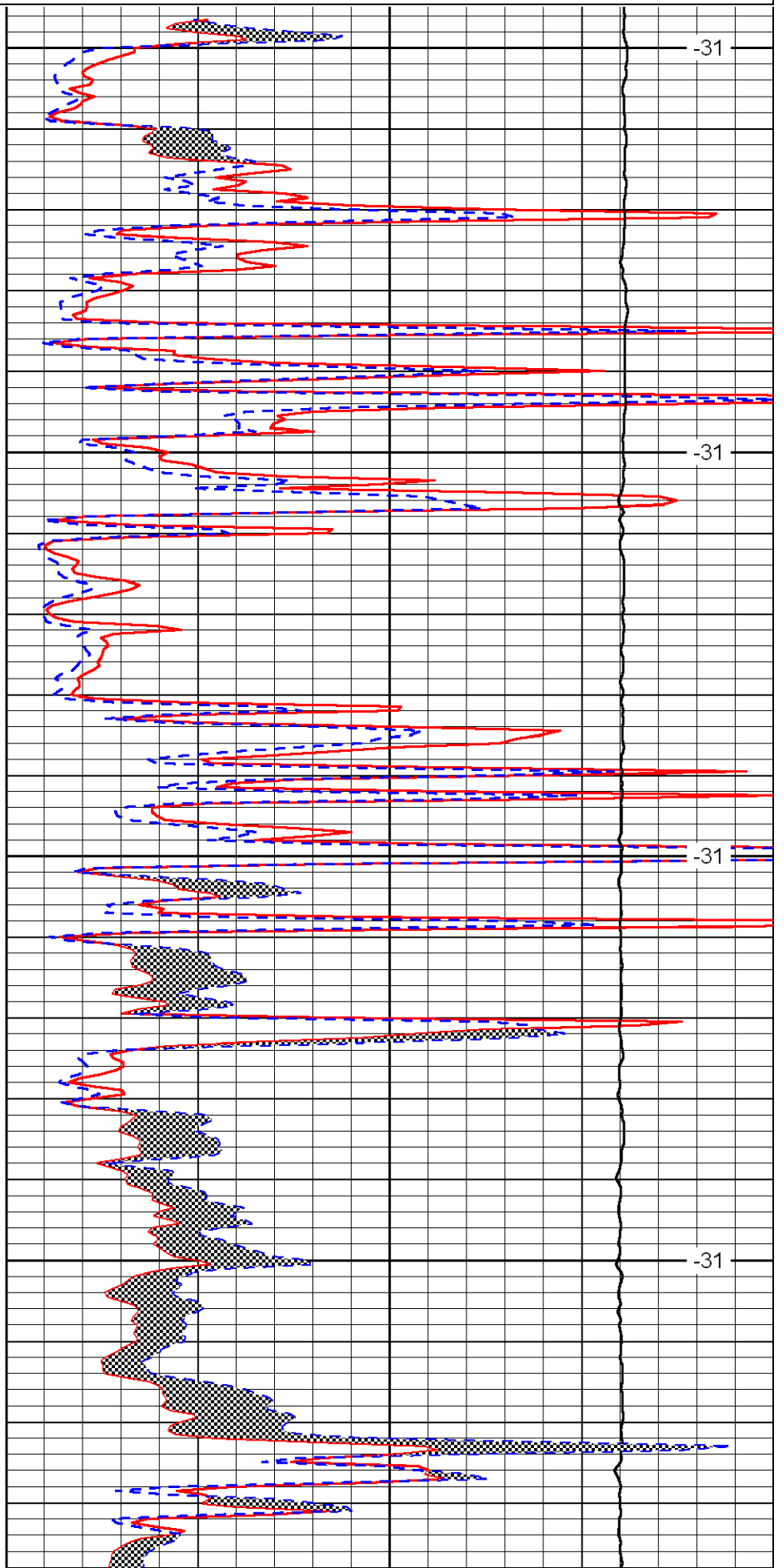


3050

3100

3150

3200

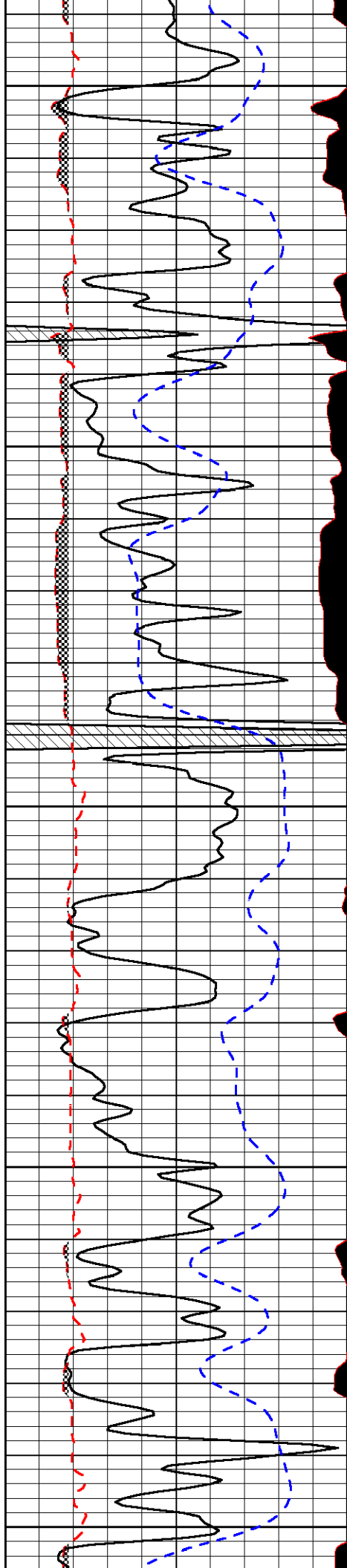


-31

-31

-31

-31



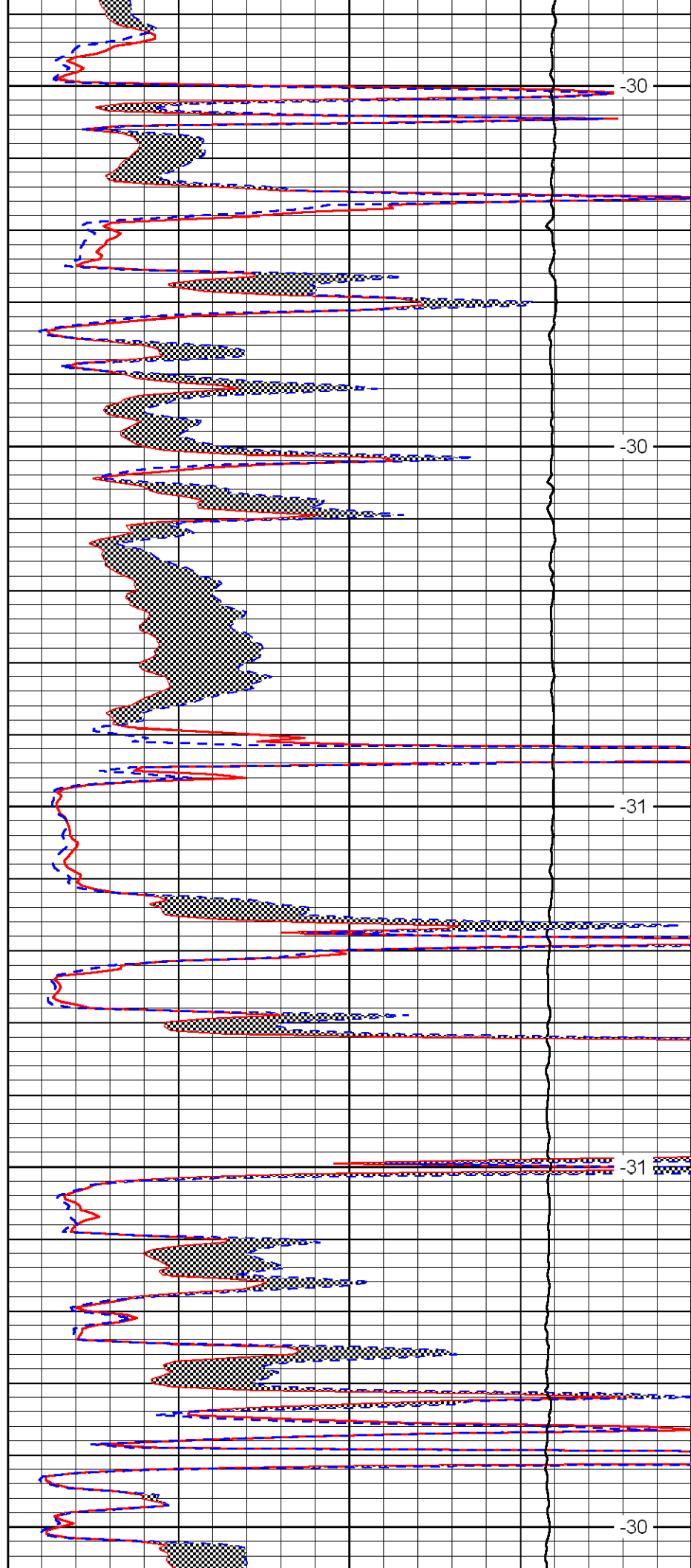
3250

3300

3350

3400

3450



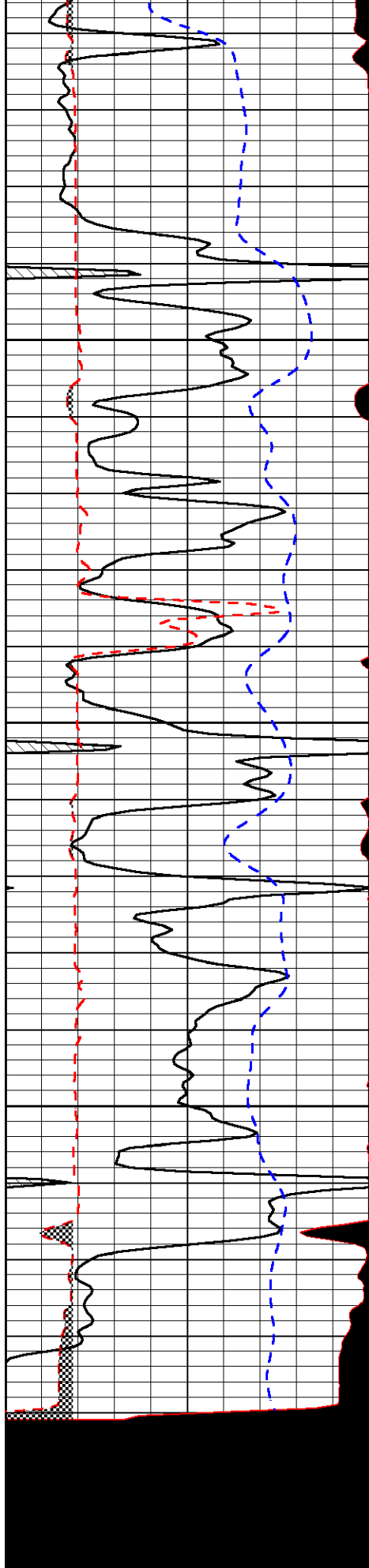
-30

-30

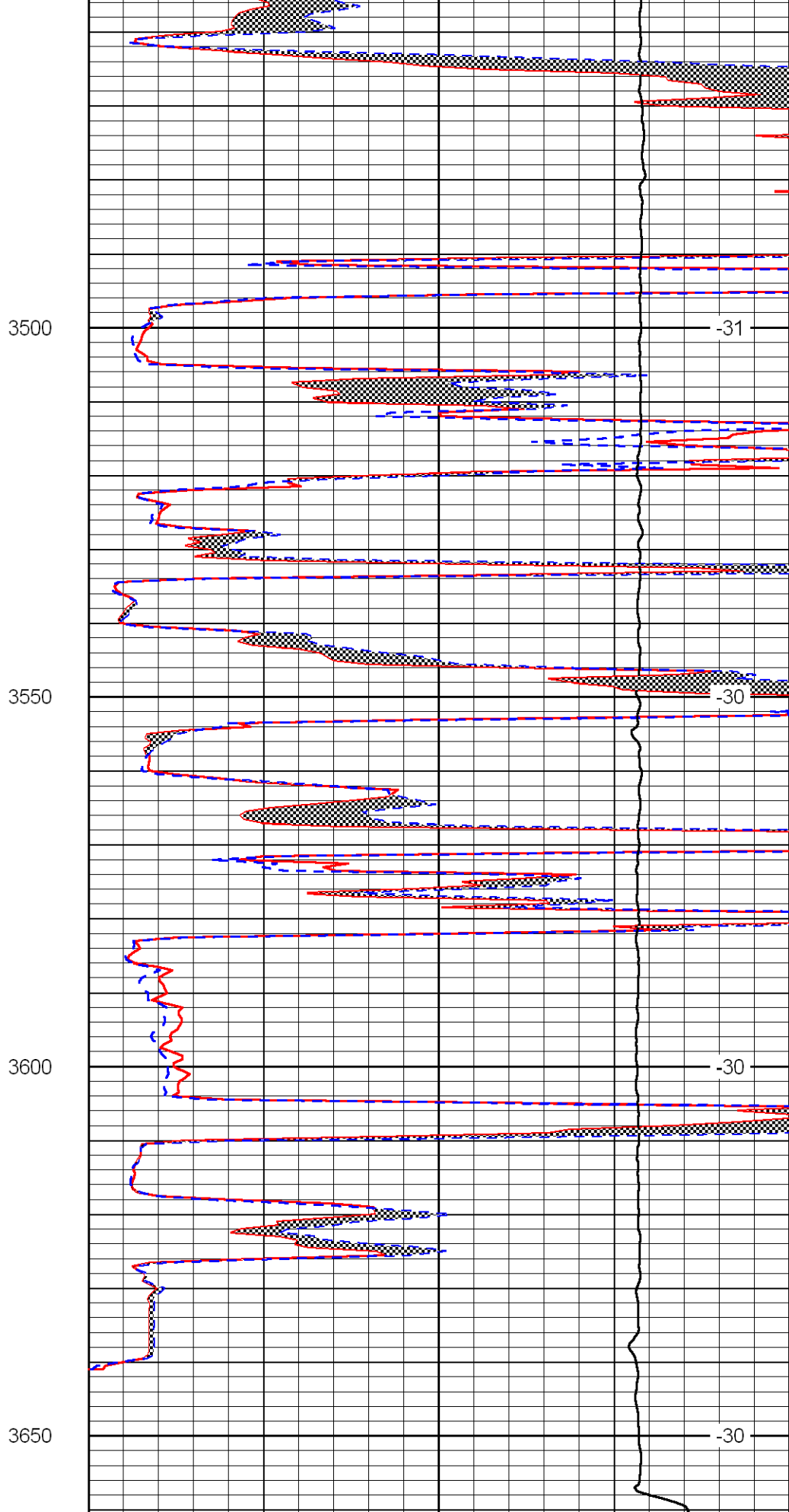
-31

-31

-30



0	Gamma Ray	150
6	MCAL (GAPI)	16
2.875	Mud Cake (GAPI)	7.875



0	Micro Inverse 1 X 1	40
0	Micro Normal 2''	40
10000	Line Weight	0

2.075 Mud Cake (S/N 1) 7.075
-200 SP 0

10000 Line Weight 0
LSPD