

Tucker

WIRELINE SERVICES

DUAL INDUCTION
RESISTIVITY LOG

File No. : TUL-56634
 Company : RUNNING FOXES PETROLEUM, INC.
 Well : GROSS #11-6D-2
 Field : DEVON
 Country : BOURBON
 State : KANSAS
 Country : USA

Location : API: #15-083-21685-00-00
 1850' FSL & 2200' FWL
 NW SE NE SW

Sect : 06 Twp : 25N Rge : 24E

Recorded By : R. FRANKLIN
 Witnessed By : C. COUNTS

Date : DEC 21 2010
 Run No. : 1

Permanent Datum : GL
 Drilling Measured From : GL
 Log Measured From : GL
 Above Permanent Datum : 0.00 FT

Depth--Driller : 430.0 FT
 Depth--Logger : 423.0 FT
 Bottom Log Interval : 422.0 FT
 Top Log Interval : 20.0 FT

Casing Depth--Driller: 20.0 FT
 Casing Depth--Logger : 20.0 FT
 Casing Diameter : 7.000 IN

Bit Size : 6.750 IN
 Unit No. : 127
 Location : TULSA

Elevations :
 KB : FT
 DF : FT
 GL : 879.00 FT

Additional Services

CNT
 LDT

The customer is hereby warned that by providing the log data herein, T. W. S. does not agree to provide any interpretation of log data, conversion of log data to physical rock parameters or recommendations. T. W. S. does not guarantee or warrant either expressly or impliedly, the accuracy of any interpretation of log data to physical rock parameters or recommendations which may be given by T. W. S. personnel. Any interpretation, conversion or recommendation is not part of the consideration for the agreement between the parties and is not part of any part of the charge by T. W. S. for its services. Any user of the log data is warned that said user is not entitled to rely on interpretations, conversions or recommendations as aforesaid.

Run Number 1

Depth To Fluid 0.0 FT
 Fluid Type In Hole : FRESH / NATIVE
 Density : 0.000 SG
 Viscosity : 0.000 SEC
 pH : 0.000
 Fluid Loss : 0.000
 Salinity : 0.000 KPPM

RM Source : MEASURED
 RM : 10.000 OHMM at 60 F
 RM at BHT : 8.370 OHMM at 73 F

RMF Source : CALCULATED
 RMF : 8.500 OHMM at 60 F
 RMF at BHT : 7.110 OHMM at 73 F

RMC Source : CALCULATED
 RMC : 11.500 OHMM at 60 F

RMC : 11.500 OHMM at 60 F
 RMC at BHT : 9.620 OHMM at 73 F
 Max Recorded Temp. : 73 F
 Time Circulation Stopped :
 Operating Rig Time, Hrs. : 2.0

- Sonde Serial Numbers -

GRTB GRT-BA-14
 PIT_B PIT-AB-12

Casing Strings

Size (IN)	Weight (LB/FT)	Bottom (FT)
7.000	15.00	20.00

- Comments -

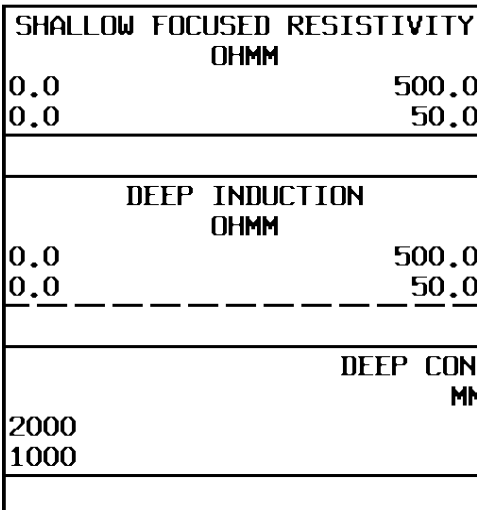
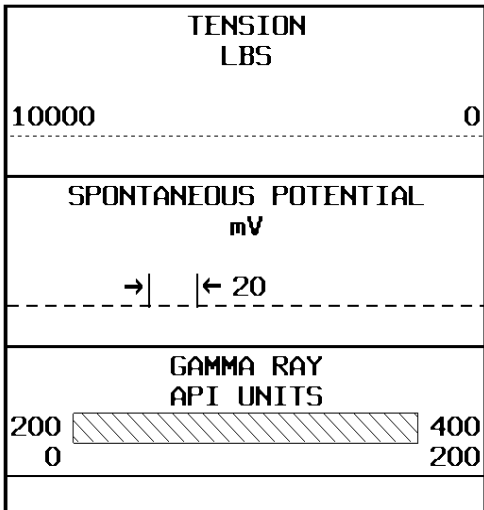
ALL PRESENTATIONS AS PER CUSTOMER REQUEST.

WELL LOGGED USING SPLIT RUNS.
 GRT AND PIT RAN IN COMBINATION ON RUN #1.
 GRT, CNT, AND LDT RAN IN COMBINATION ON RUN #2.
 CALIPERS ORIENTED ON THE X-Y AXIS.
 PHIN IS CALIPER CORRECTED.
 2.71 G/CC USED TO CALCULATE POROSITY.
 ANNULAR HOLE VOLUME CALCULATED USING 2.875" PRODUCTION CASING.
 TOOL STACK DIAGRAM NOT PRESENTED DUE TO SPLIT RUNS.

GRT: GRP.
 CNT: PHIN, CLCNIN.
 LDT: PORL, LCORN, PECLN, CLLDIN, LDENN, PORLLS, PECSN.
 PIT: ILD, ILM, CIRD, SFLAEC, SPU.

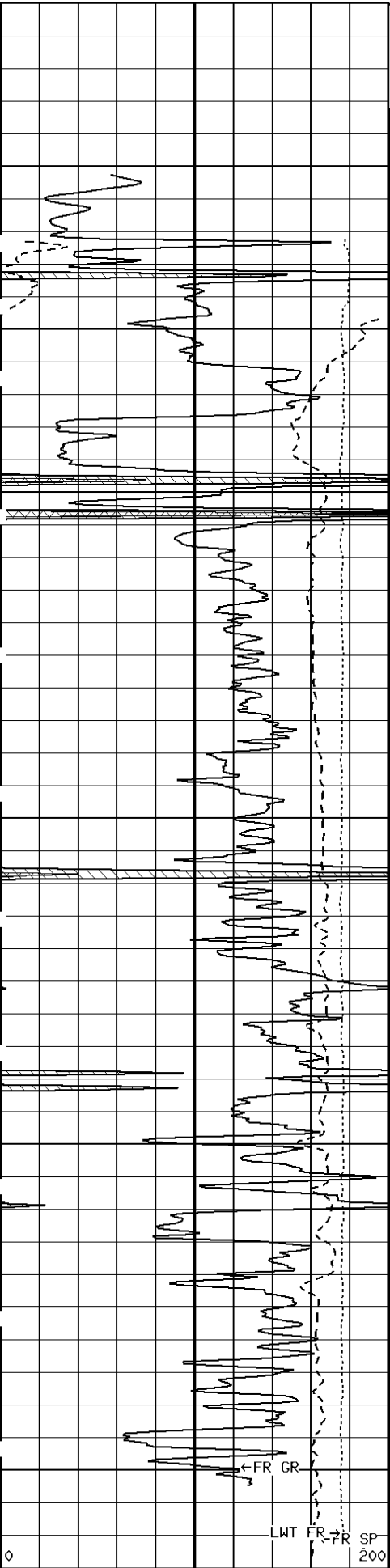
OPERATORS:
 S. DAVIS
 M. GARNER

THANK YOU FOR USING TUCKER WIRELINE SERVICES!



1:600 SECTION
2 INCH

File #707



File #707

000

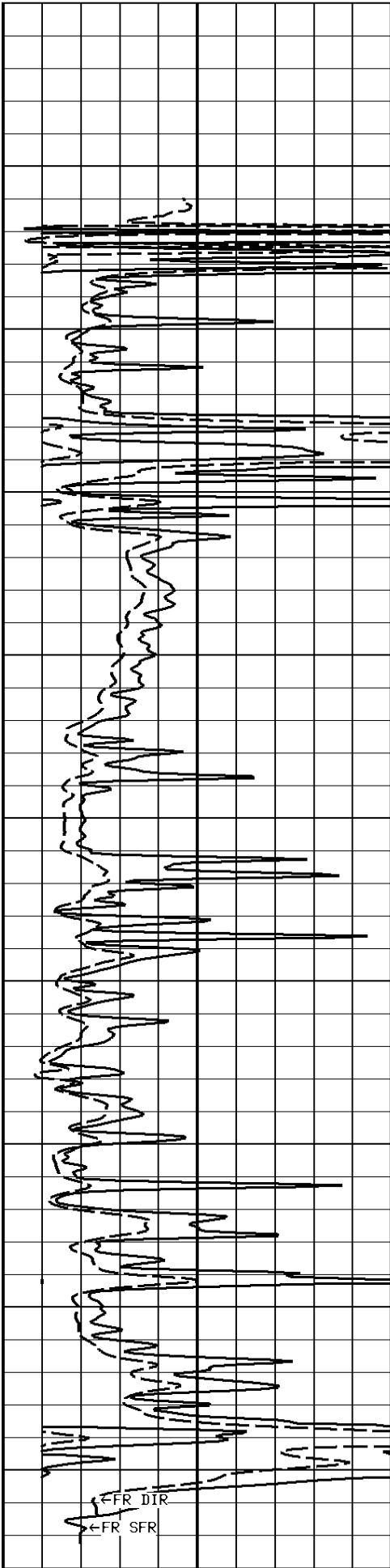
100

200

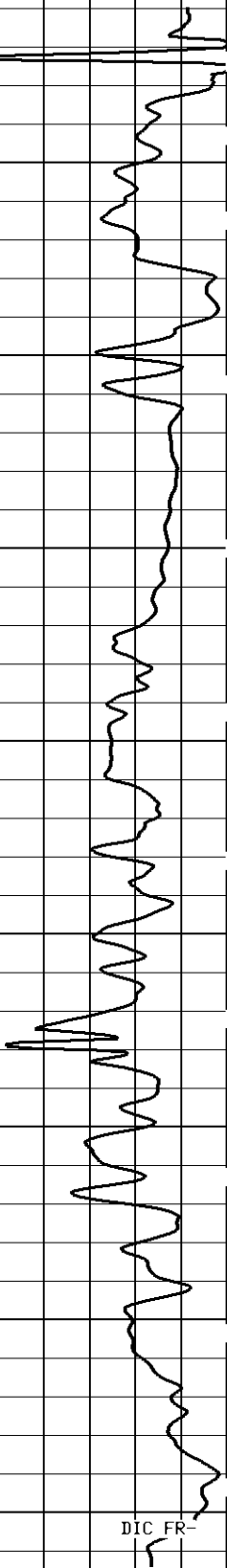
300

400

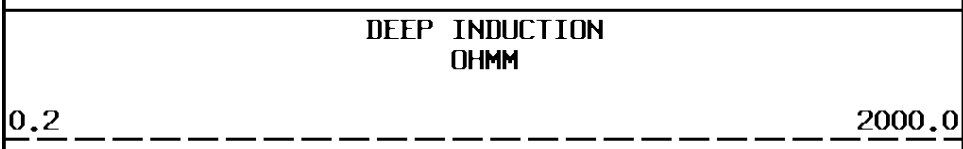
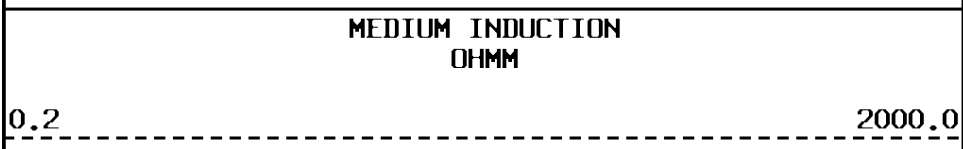
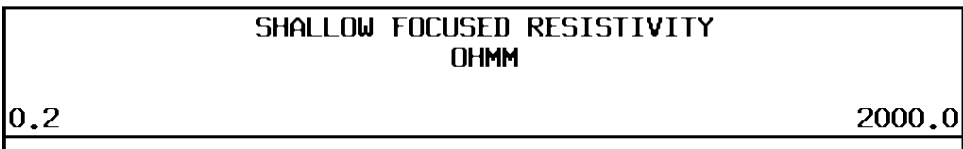
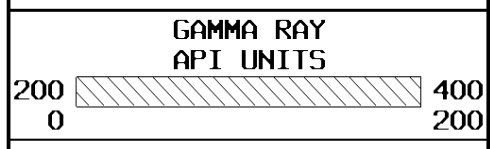
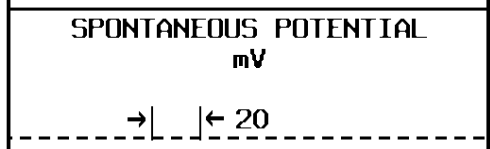
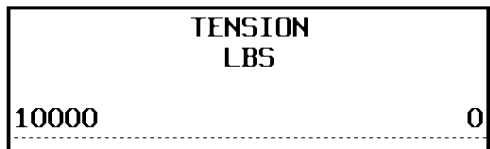
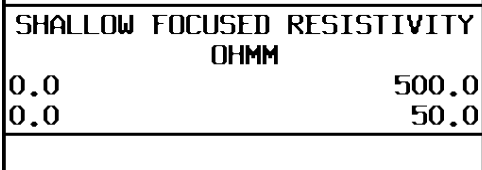
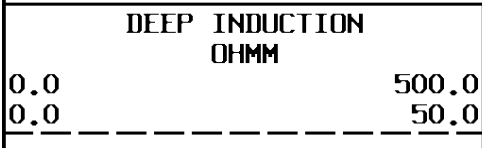
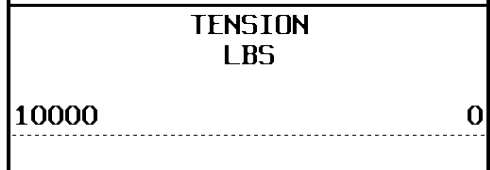
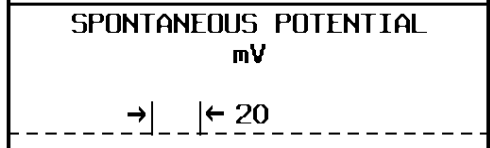
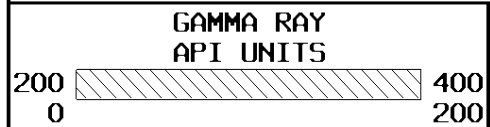
423



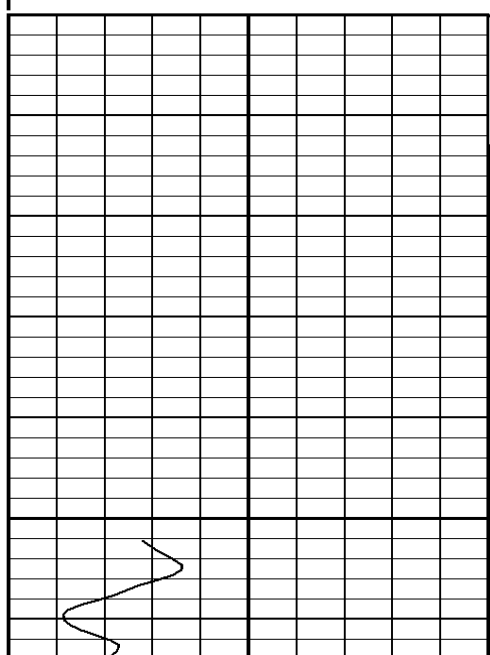
DIC FR-



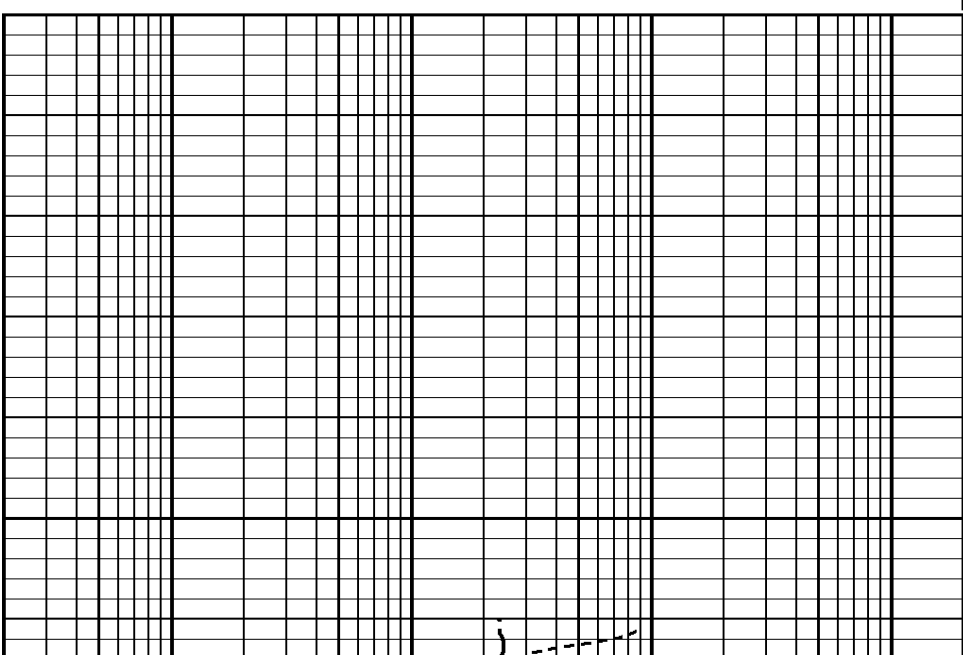
1:600 SECTION
2 INCH



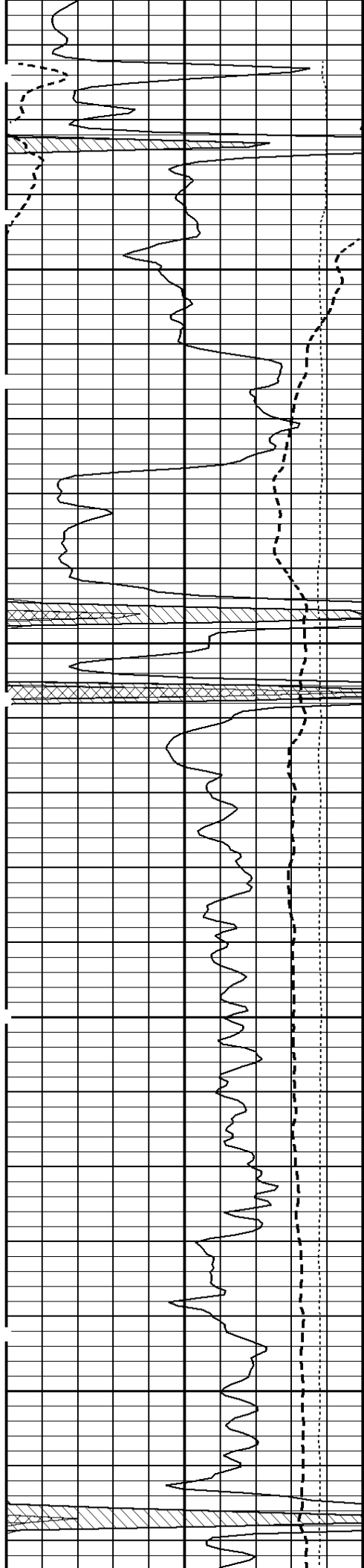
1:240 MAIN SECTION



File #707

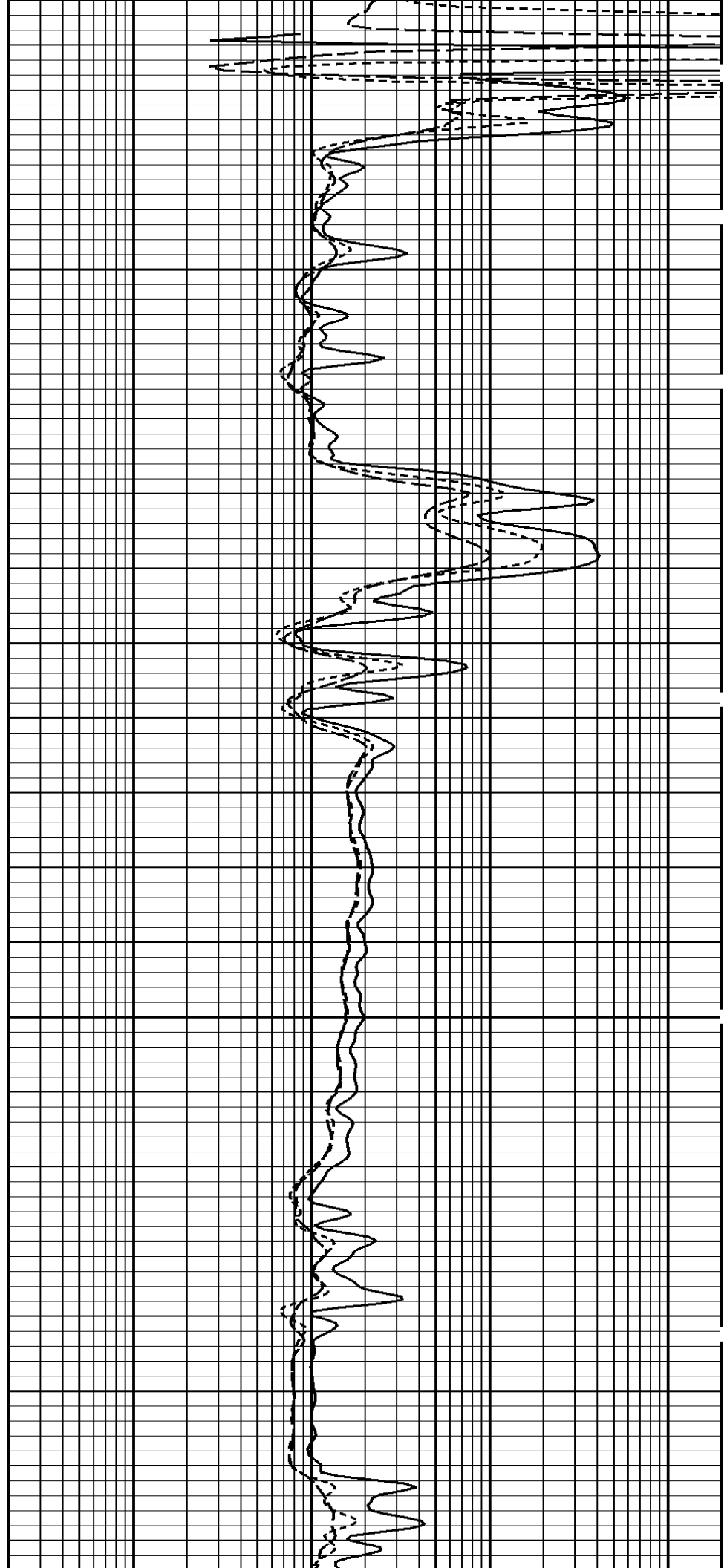


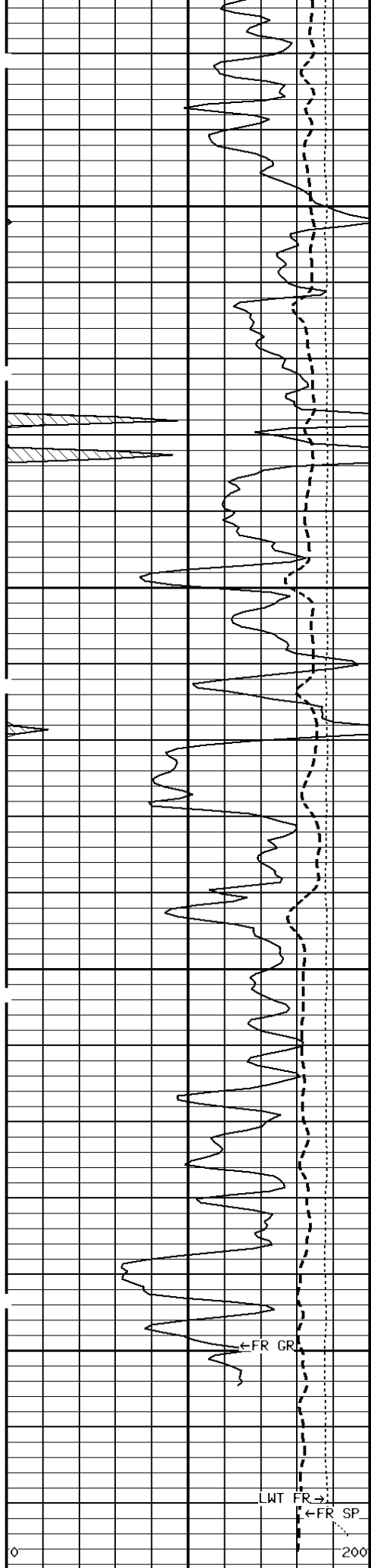
000



100

200





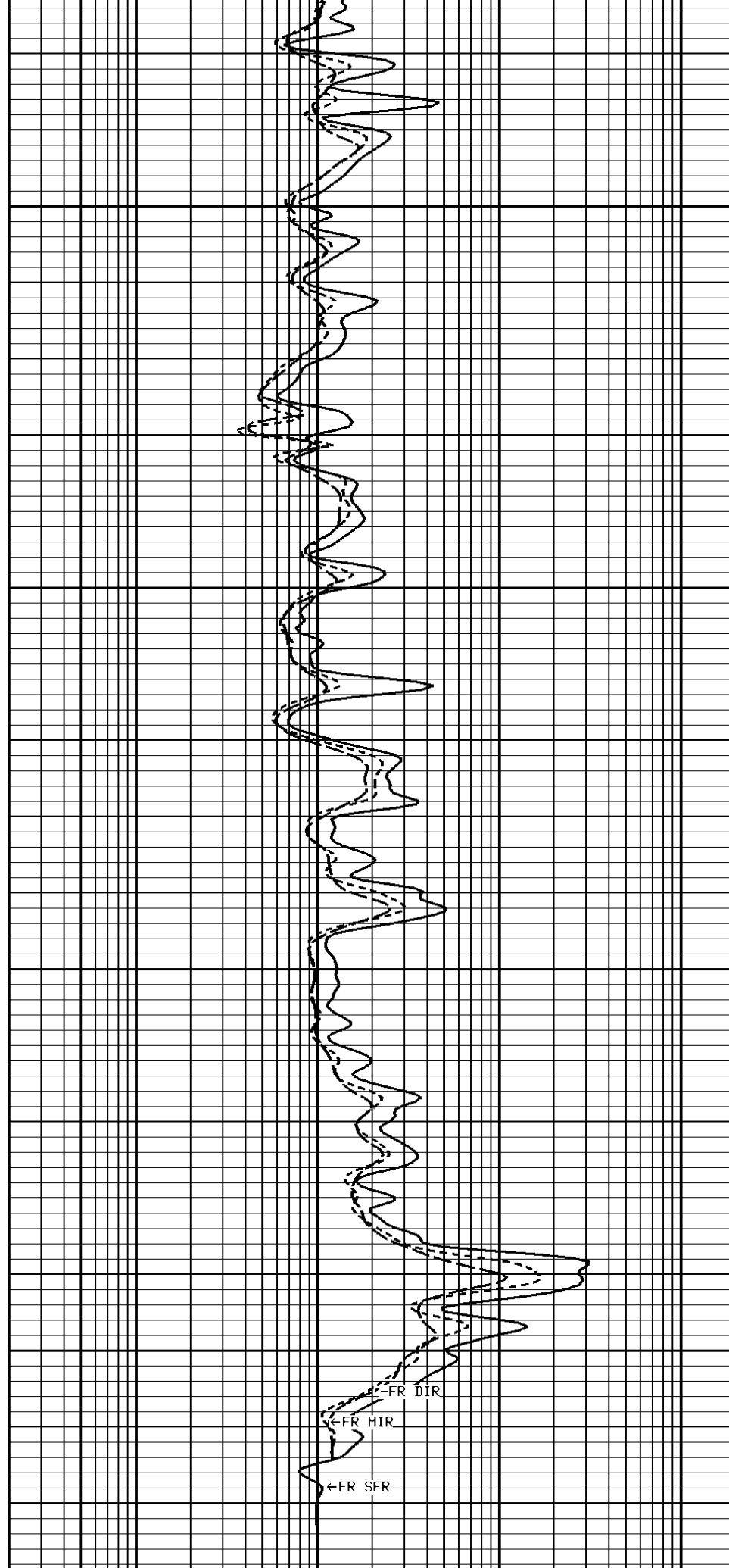
300

400

423

0

200



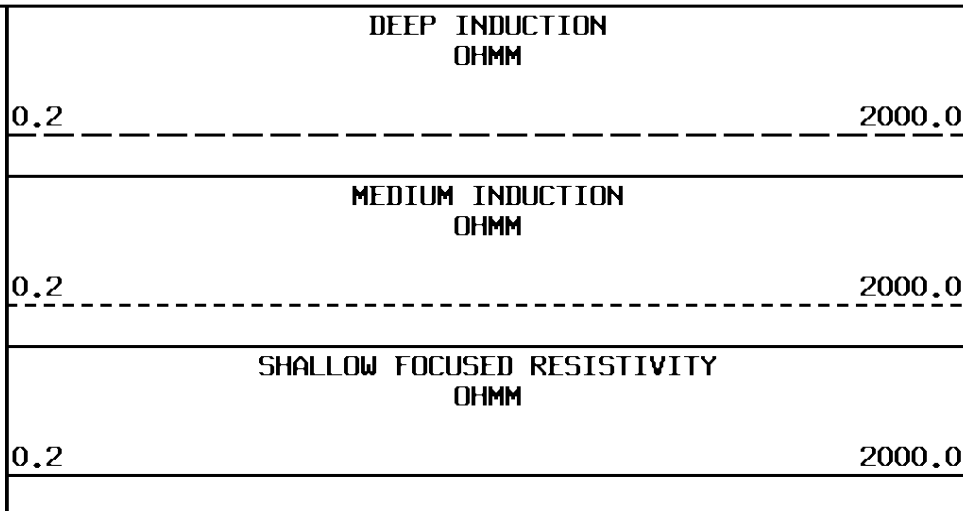
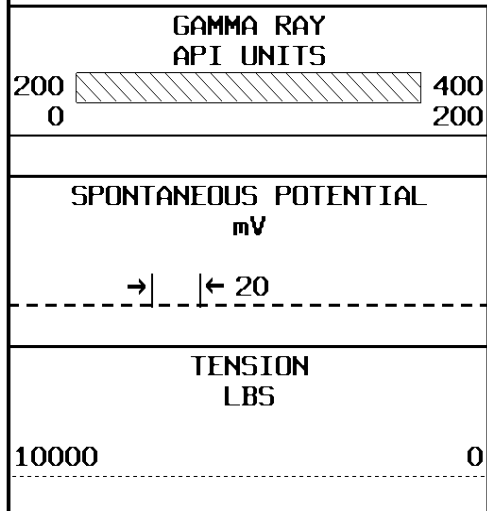
←FR DIR

←FR MIR

←FR SFR

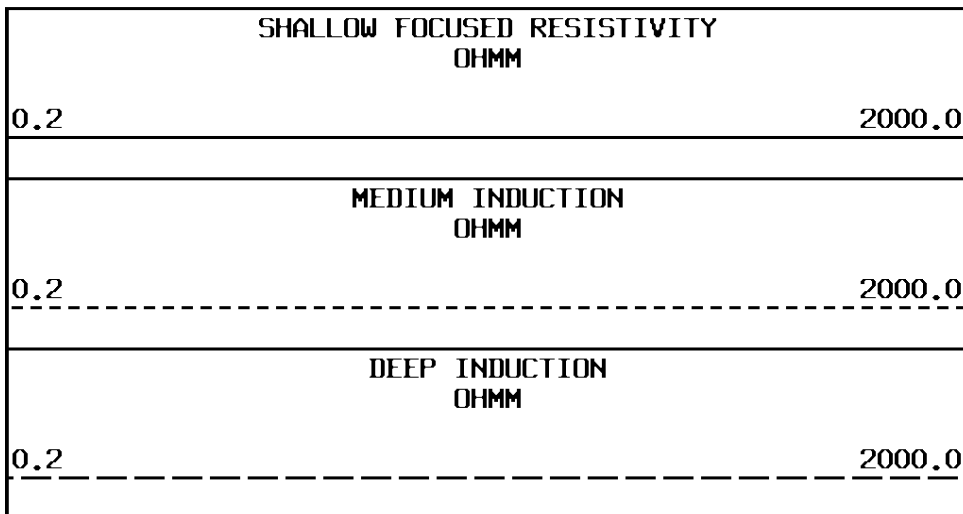
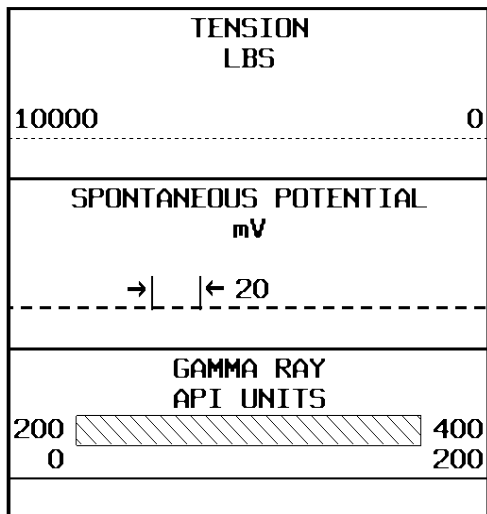
File #707

1:240 MAIN SECTION



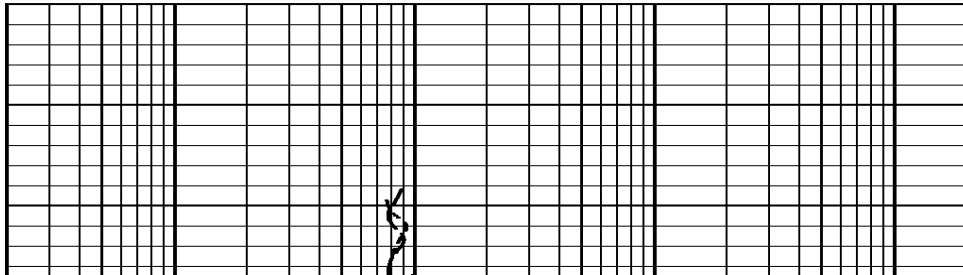
* Borehole Zone Factors *

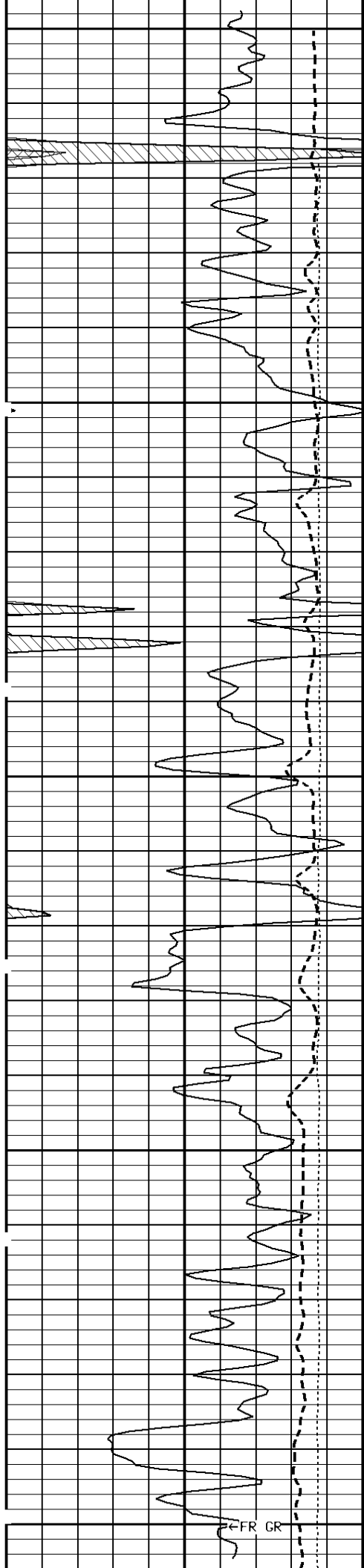
Zone 1 99999.0 to 0.0 F
 Drill Bit Size _____ 6.750 IN



1:240 REPEAT SECTION

File #708

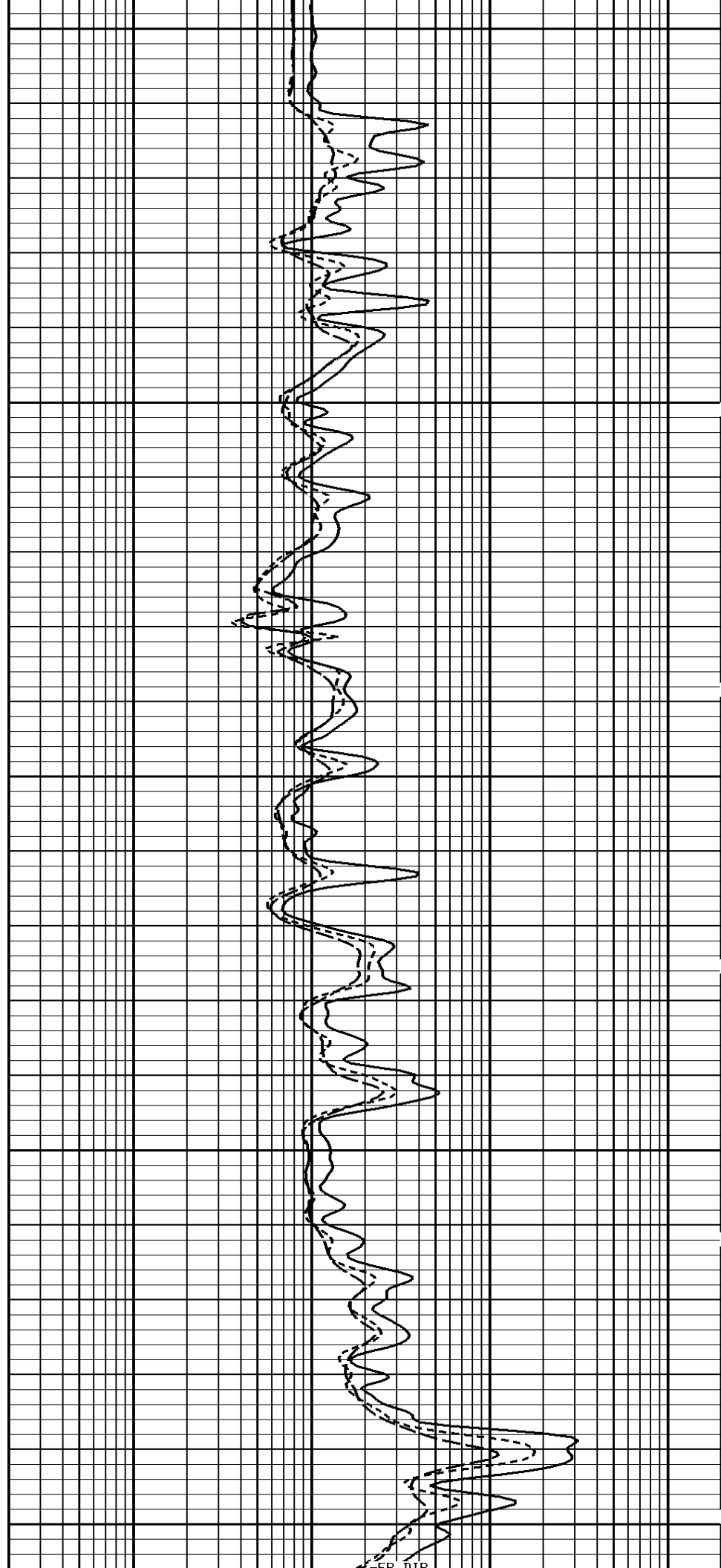




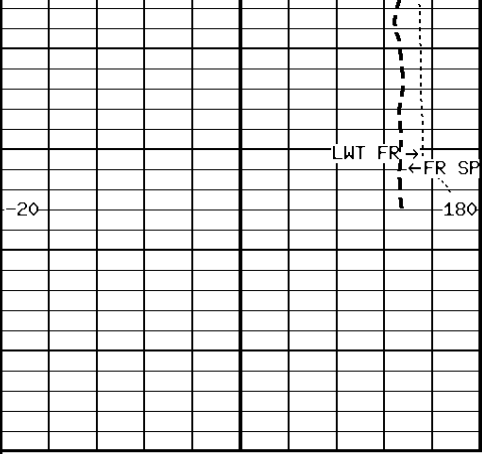
200

300

400

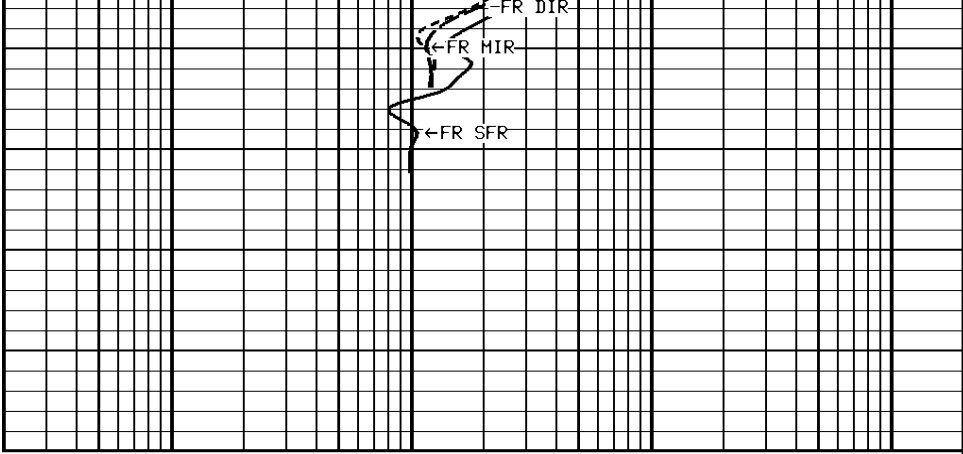


FR GR



423

File #708



1:240 REPEAT SECTION

GAMMA RAY API UNITS 	
SPONTANEOUS POTENTIAL mV 	
TENSION LBS 	

DEEP INDUCTION OHMM 	
MEDIUM INDUCTION OHMM 	
SHALLOW FOCUSED RESISTIVITY OHMM 	

* Borehole Zone Factors *

Zone 1	99999.0	to	0.0	F
Drill Bit Size				6.750 IN

* Calibration Summary *

Shop Calibration					
GRTB					
Performed : 21-Aug-2009			Time : 15:26		
Sensor Suite : GR-GR5			ID : GRT-BA-14		
	Measured	Units	Calibrated	Units	
GR	Background	Jig	Jig	GRAPI	
	49	347	175		

Shop Calibration					
PIT_B					
Performed : 12-Nov-2009			Time : 12:53		
Sensor Suite : P-IND-T			ID : PIT-AB-12		
	Measured		Calibrated		Units
	R	X	R	X	
Air	132122	129435	0.0	0.0	MMHOS
Zero	131065	131068	0.0	0.0	MMHOS

Reference	246953	246327	5000.0	5000.0	MMHOS
Loop	151860	171700	2685.1	981.9	MMHOS
Sonde Error			-0.4	2.8	MMHOS
Cond			5000.0	5000.0	MMHOS

Deep

	Measured		Calibrated		Units
	R	X	R	X	
Air	129258	130928	0.0	0.0	MMHOS
Zero	131078	131073	0.0	0.0	MMHOS
Reference	233123	232037	2000.0	2000.0	MMHOS
Loop	149794	174665	1268.9	463.9	MMHOS
Sonde Error			-2.8	0.8	MMHOS
Cond			2000.0	2000.0	MMHOS

Temperature

	Measured		Calibrated		Units
	Low	High	Low	High	
	16980.0	56920.0	70.0	350.0	DEGF

Performed : 12-Nov-2009 Time : 12:50
 Sensor Suite : SFL ID : PIT-AB-12

Internal

	Measured		Calibrated		Units
	Zero	Reference	Zero	Reference	
Im	32775.4	49495.8	0.0	7028.0	uA
Ib	32766.0	49842.1	0.0	1750.0	mA
MOM1	32803.3	56544.4	0.0	175.0	mV
Equivalent SFL				43.97	OHMM

Performed : 12-Nov-2009 Time : 11:58
 Sensor Suite : P-SP ID : PIT-AB-12

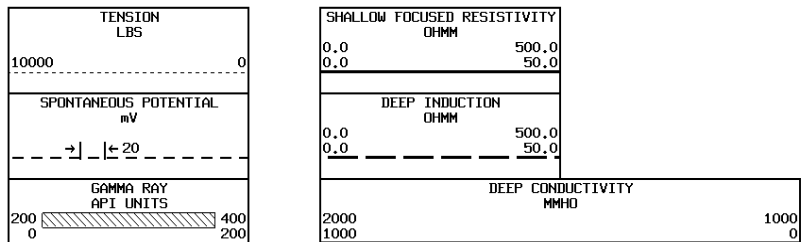
Internal

	Measured		Calibrated		Units
	Zero	Reference	Zero	Reference	
	32796.1	58985.5	0.0	1000.0	mV

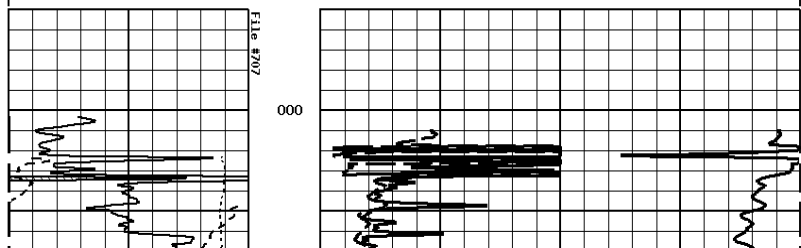
Performed : 27-Nov-2007 Time : 14:12
 Sensor Suite : P-RMUD ID : PIT-AB-12

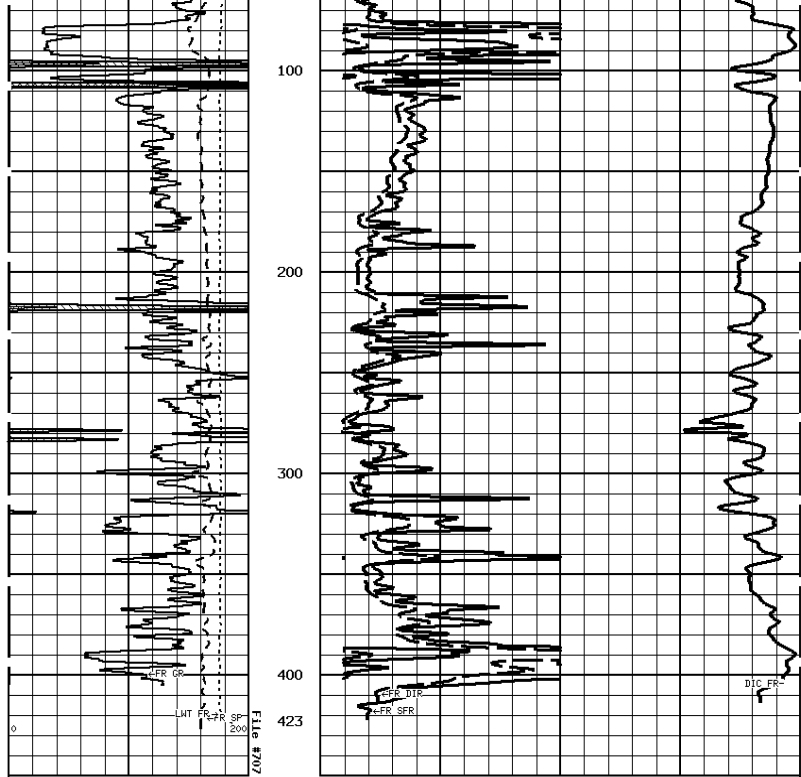
Internal

	Measured		Calibrated		Units
	Zero	Reference	Zero	Reference	
Rmi	17920.0	32747.0	0.0	290.6	mA
Rmv	17920.0	28538.9	0.0	290.6	mV
Equivalent Rm				0.9037	OHMM



1:1200 SECTION





1:1200 SECTION

