



Microresistivity Log

DIGITAL LOG (785) 625-3858

API No. 15-065-23,712-00-00	Company H&C Oil Operating, Inc.	Well Bakel #30-1	Field Wildcat
	County Graham	State Kansas	
	Location NW SW NW 1650' FNL & 330' FWL		
	Sec: 30	Twp: 9 S	Rge: 24 W
	Permanent Datum Log Measured From Drilling Measured From	Ground Level Kelly Bushing From Kelly Bushing	Elevation 2569 5 Ft. Above Perm. Datum
			Other Services CNL/CDL DIL/BHCS
			Elevation K.B. 2574 D.F. 2569 G.L. 2569

Date	2/2/2011
Run Number	Two
Depth Driller	4174
Depth Logger	4175
Bottom Logged Interval	4174
Top Log Interval	3550
Casing Driller	8.625 @ 259
Casing Logger	255
Bit Size	7.875
Type Fluid in Hole	Chemical
Salinity, ppm CL	3.000
Density / Viscosity	9.0 61
pH / Fluid Loss	9.0 8.0
Source of Sample	Flowline
Rm @ Meas. Temp	1.4 @ 45
Rmf @ Meas. Temp	1.05 @ 45
Rmc @ Meas. Temp	1.9 @ 45
Source of Rmf / Rmc	Charts
Rm @ BHT	.54 @ 118
Operating Rig Time	4 Hours
Max Rec. Temp. F	118
Equipment Number	17
Location	Hays
Recorded By	T. Martin
Witnessed By	Marc Downing

<<< Fold Here >>>

All interpretations are opinions based on inferences from electrical or other measurements and we cannot and do not guarantee the accuracy or correctness of any interpretation, and we shall not, except in the case of gross or willful negligence on our part, be liable or responsible for any loss, costs, damages, or expenses incurred or sustained by anyone resulting from any interpretation made by any of our officers, agents or employees. These interpretations are also subject to our general terms and conditions set out in our current Price Schedule.

Comments

Thank you for using Log-Tech, Inc.
(785) 625-3858

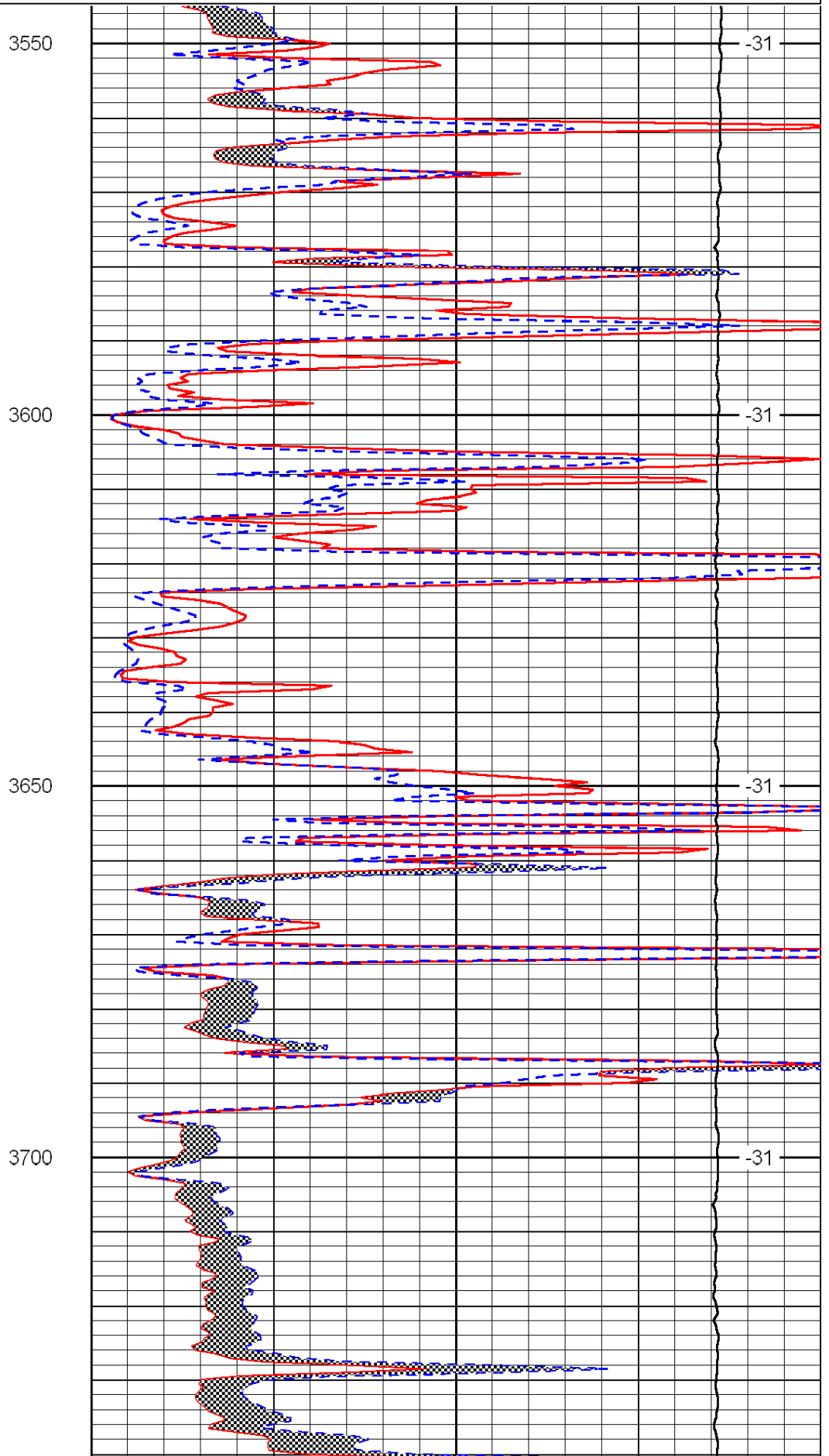
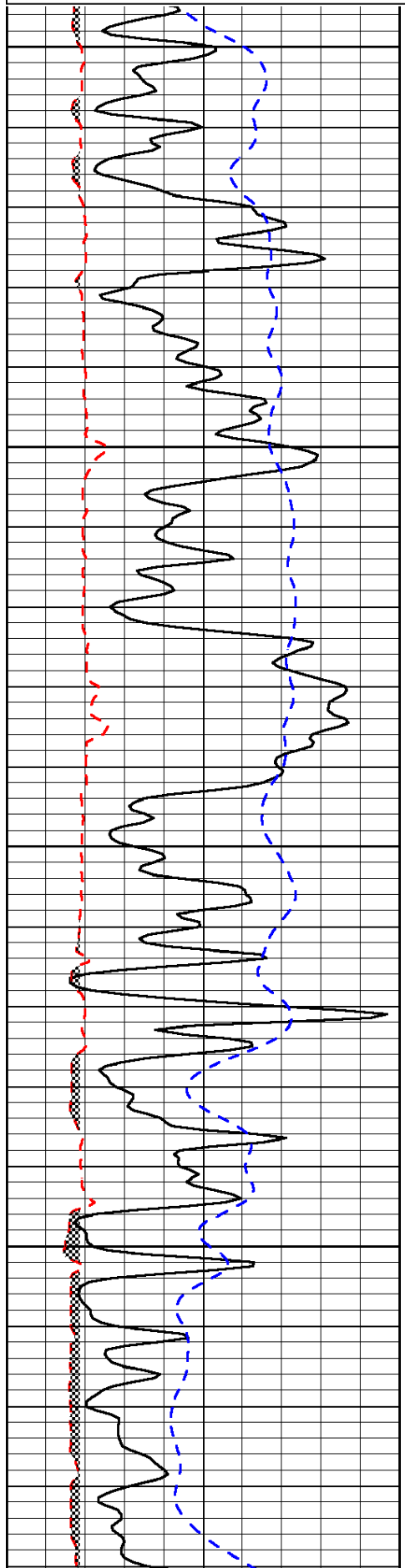
Hill City, S to Redline Rd, approx 12 W to 160 Rd,
1/2 N, E into

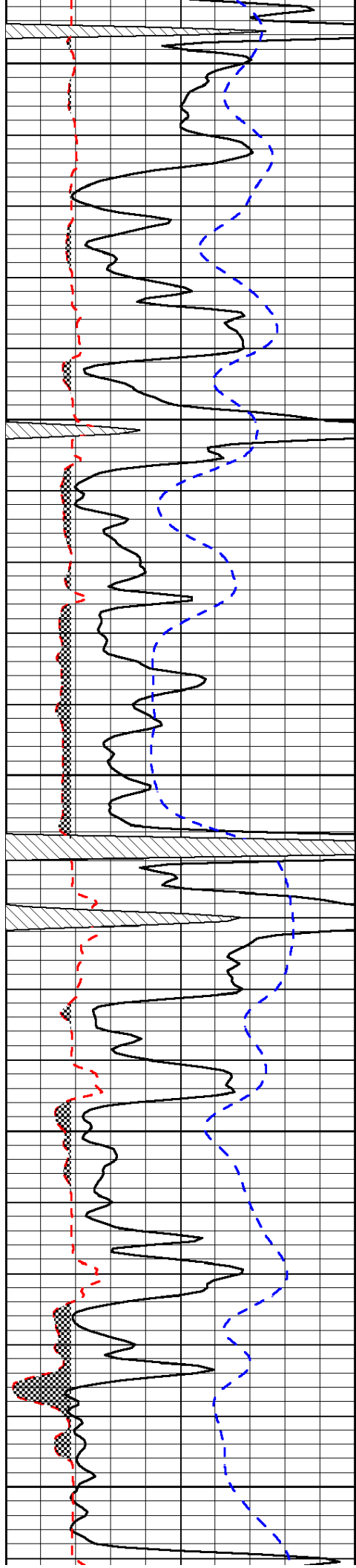
Database File: c:\warrior\data\h&c_bakel #30-1\h&chd.db
 Dataset Pathname: dil/hcstk
 Presentation Format: micro
 Dataset Creation: Wed Feb 02 23:55:22 2011
 Charted by: Depth in Feet scaled 1:240

0	Gamma Ray	150
6	Micro Log Caliper (GAPI)	16
-200	SP (mV)	0

0	Micro Inverse 1 X 1	40
0	Micro Normal 2"	40
15000	Line Weight	0

LSPD





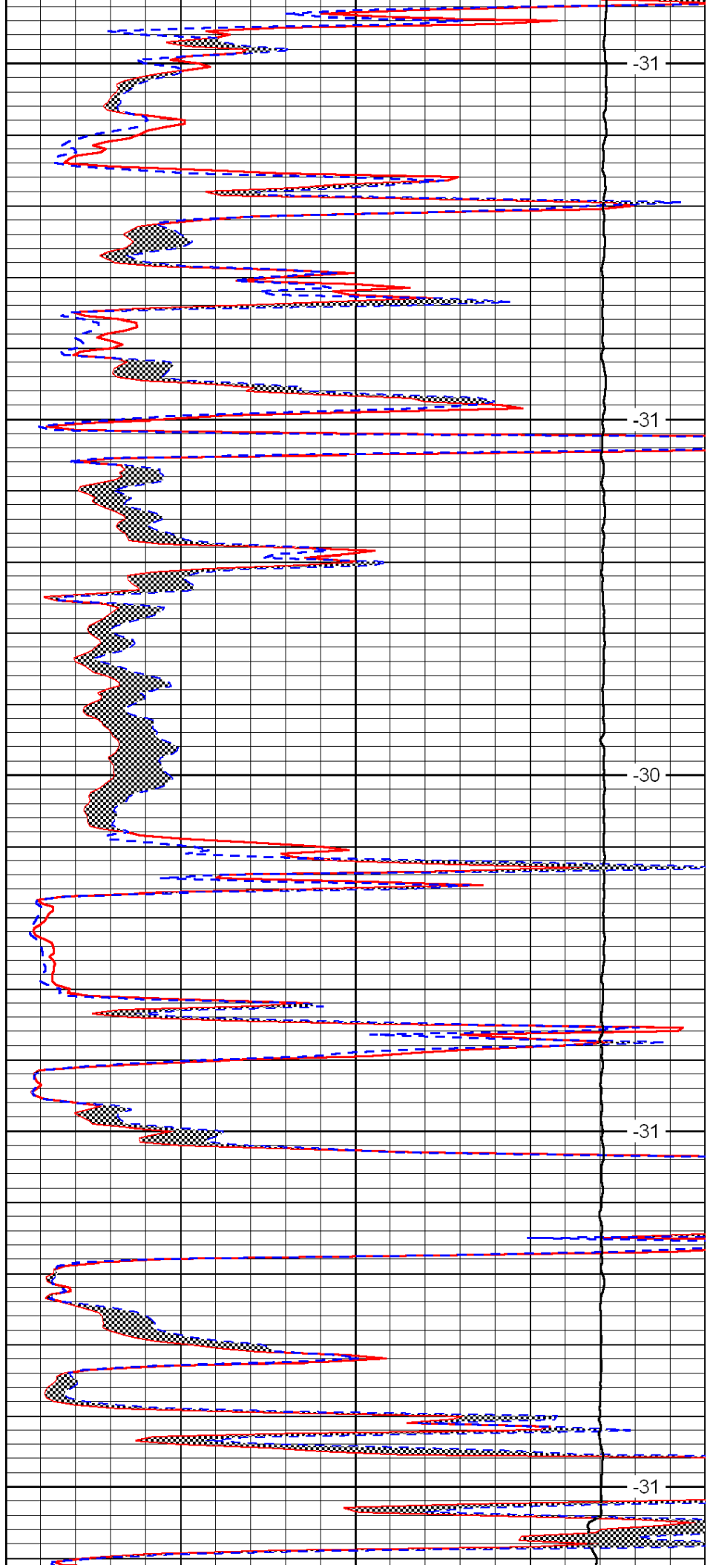
3750

3800

3850

3900

3950



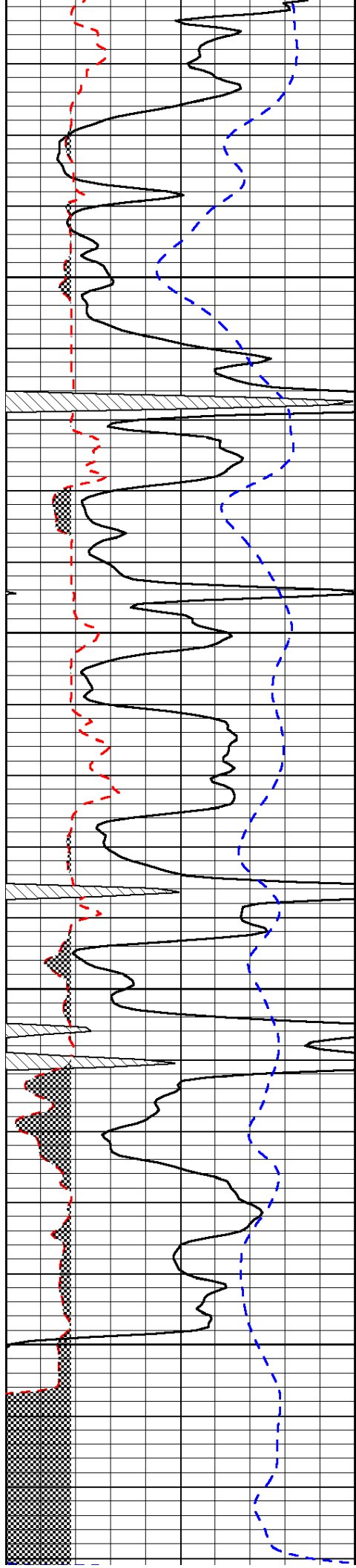
-31

-31

-30

-31

-31

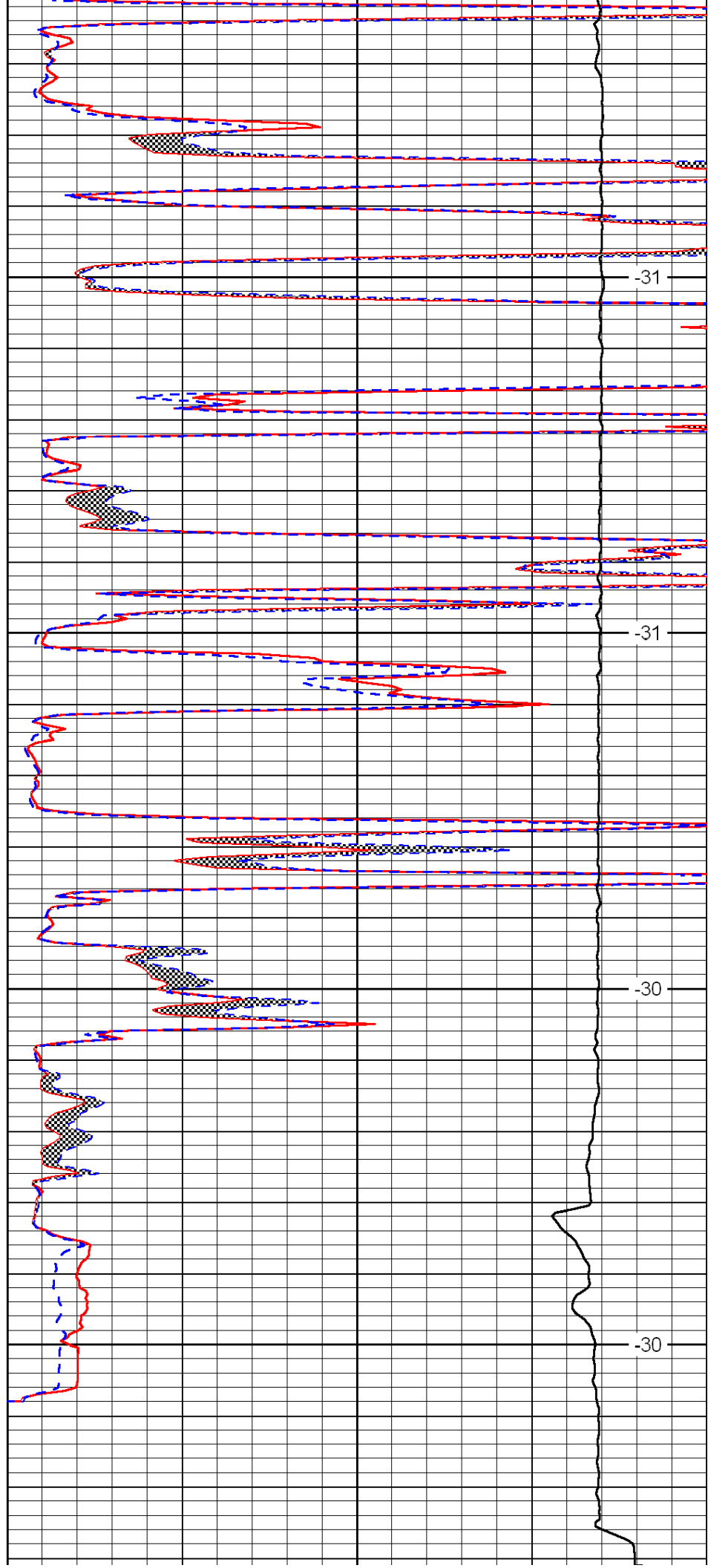


4000

4050

4100

4150



-31

-31

-30

-30

0	Gamma Ray	150
6	Micro Log Caliper (GAPI)	16
-200	SP (mV)	0

0	Micro Inverse 1 X 1	40
0	Micro Normal 2"	40
15000	Line Weight	0

LSPD