



**Borehole Compensated
Sonic Log**

DIGITAL LOG (785) 625-3858

API No.	15-065-23,712-00-00
Company	H&C Oil Operating, Inc.
Well	Bakel #30-1
Field	Wildcat
County	Graham
State	Kansas
Location	NW SW NW 1650' FNL & 330' FWL
Sec: 30	Twp: 9 S Rge: 24 W
Other Services	CNL/CDL MEL/DIL

Permanent Datum	Ground Level	Elevation 2569
Log Measured From	Kelly Bushing	5 Ft. Above Perm. Datum
Drilling Measured From	Kelly Bushing	
Date	2/2/2011	Elevation K.B. 2574 D.F. G.L. 2569

Run Number	Two
Type Log	BHC Sonic
Depth Driller	4174
Depth Logger	4175
Bottom Logged Interval	4164
Top Logged Interval	250
Type Fluid In Hole	Chemical
Salinity, PPM CL	3,000
Density	9.0
Level	Full
Max. Rec. Temp. F	118
Operating Rig Time	4 Hours
Equipment -- Location	17 Hays
Recorded By	T. Martin
Witnessed By	Marc Downing

Borehole Record				Casing Record			
Run No.	Bit	From	To	Size	Wgt.	From	To
One	12.25	00	259	8.625	23#	00	
Two	7.875	259	TD				259

<<< Fold Here >>>

All interpretations are opinions based on inferences from electrical or other measurements and we cannot and do not guarantee the accuracy or correctness of any interpretation, and we shall not, except in the case of gross or willful negligence on our part, be liable or responsible for any loss, costs, damages, or expenses incurred or sustained by anyone resulting from any interpretation made by any of our officers, agents or employees. These interpretations are also subject to our general terms and conditions set out in our current Price Schedule.

Comments

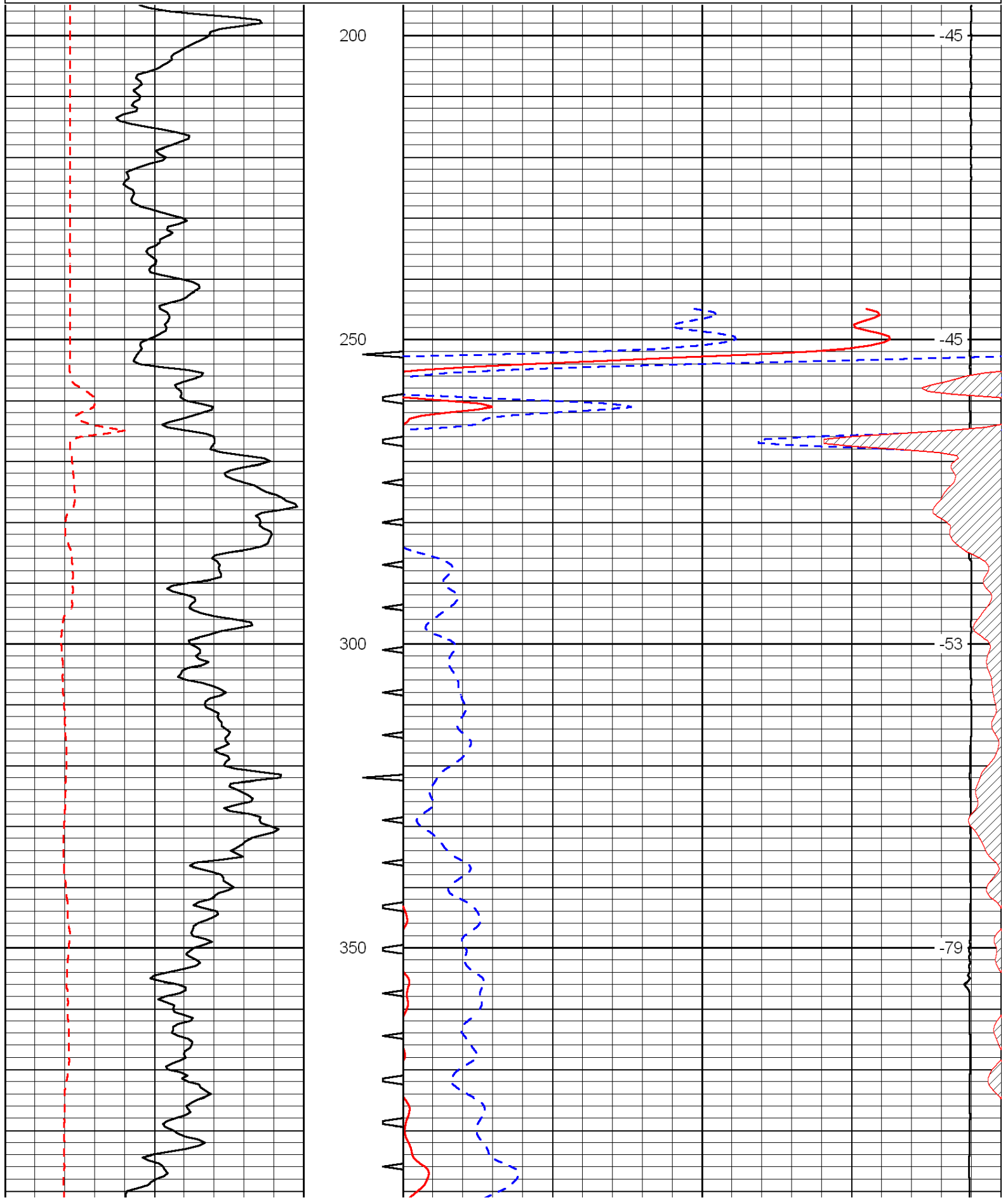
Thank you for using Log-Tech, Inc.
(785) 625-3858

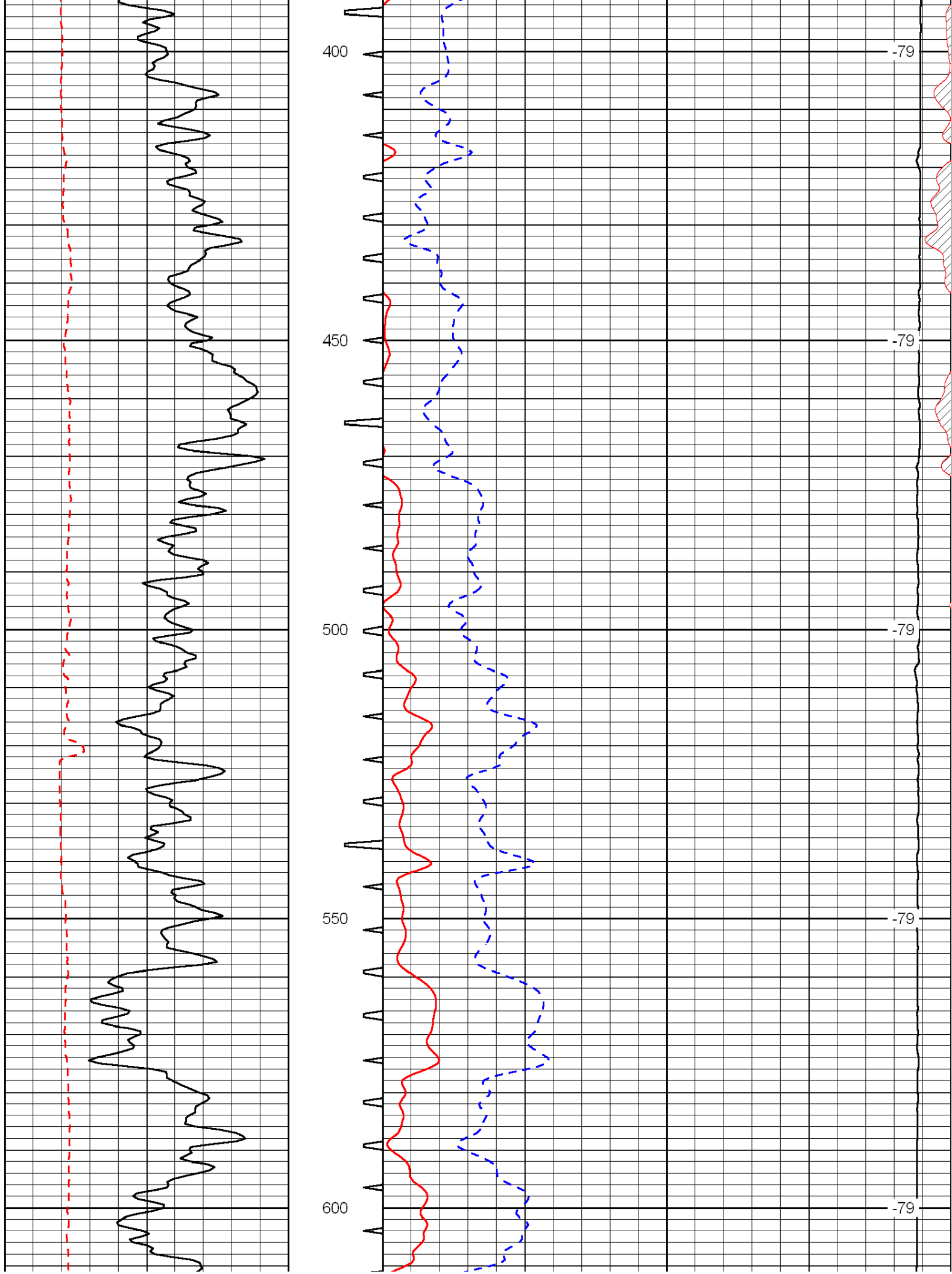
Hill City, S to Redline Rd, approx 12 W to 160 Rd,
1/2 N, E into

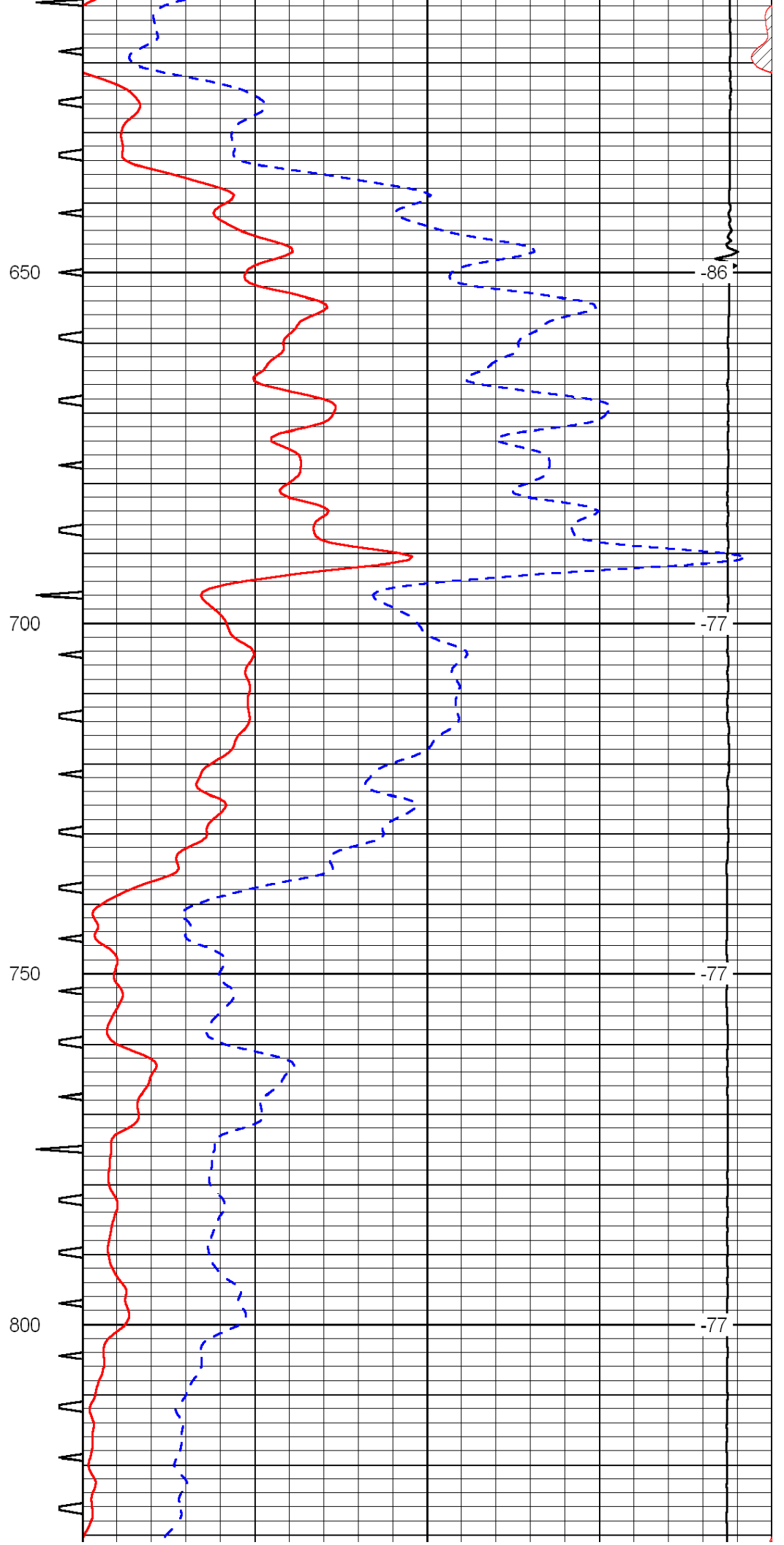
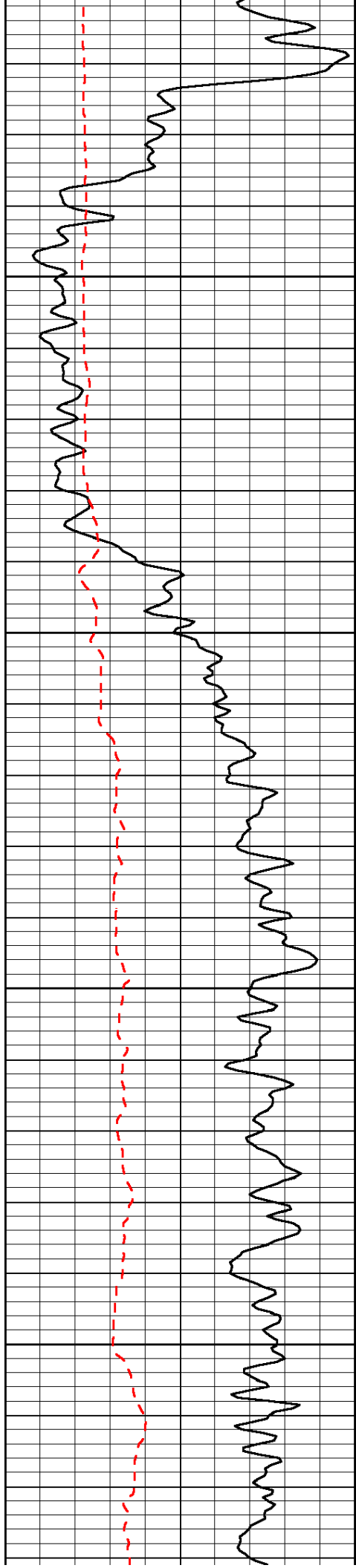
Database File: c:\warrior\data\h&c_bakel #30-1\h&chd.db
 Dataset Pathname: dil/hcstk
 Presentation Format: sonic
 Dataset Creation: Wed Feb 02 23:55:22 2011
 Charted by: Depth in Feet scaled 1:240

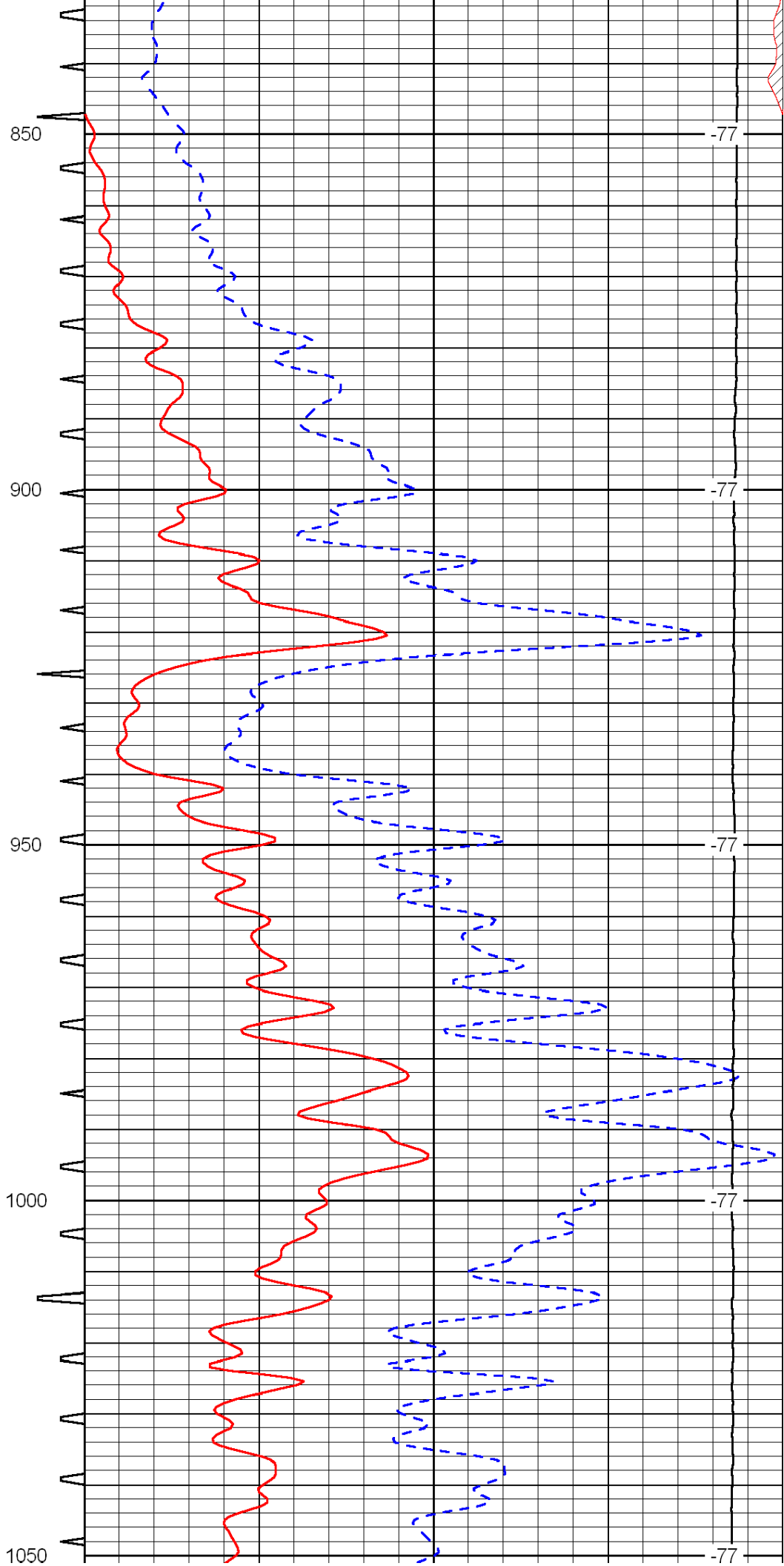
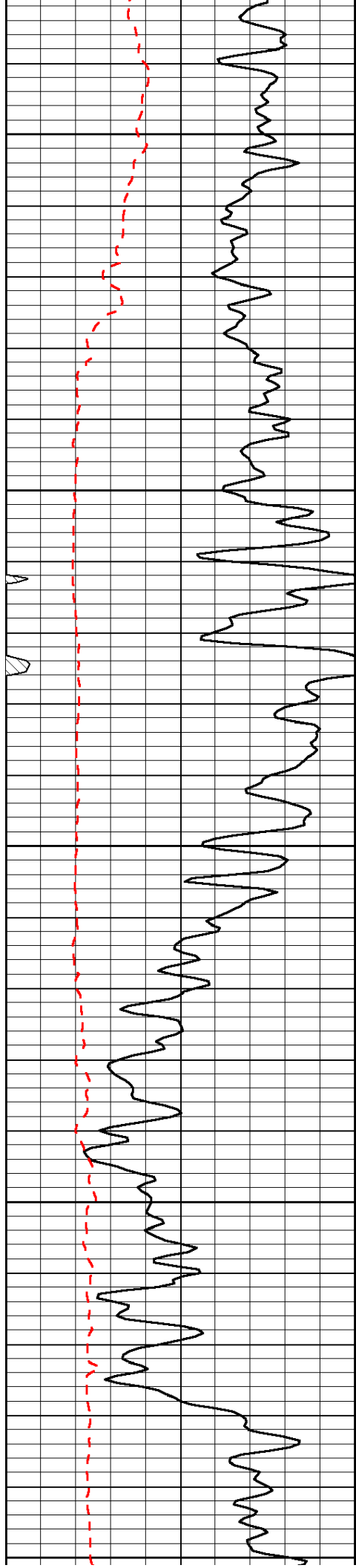
0	Gamma Ray	150	Sonic Int	140	Delta Time (usec/ft)	40
150	Gamma Ray	300	5	0	SPOR	-10
6	Caliper (GAPI)	16		15000	LTEN (lb)	0

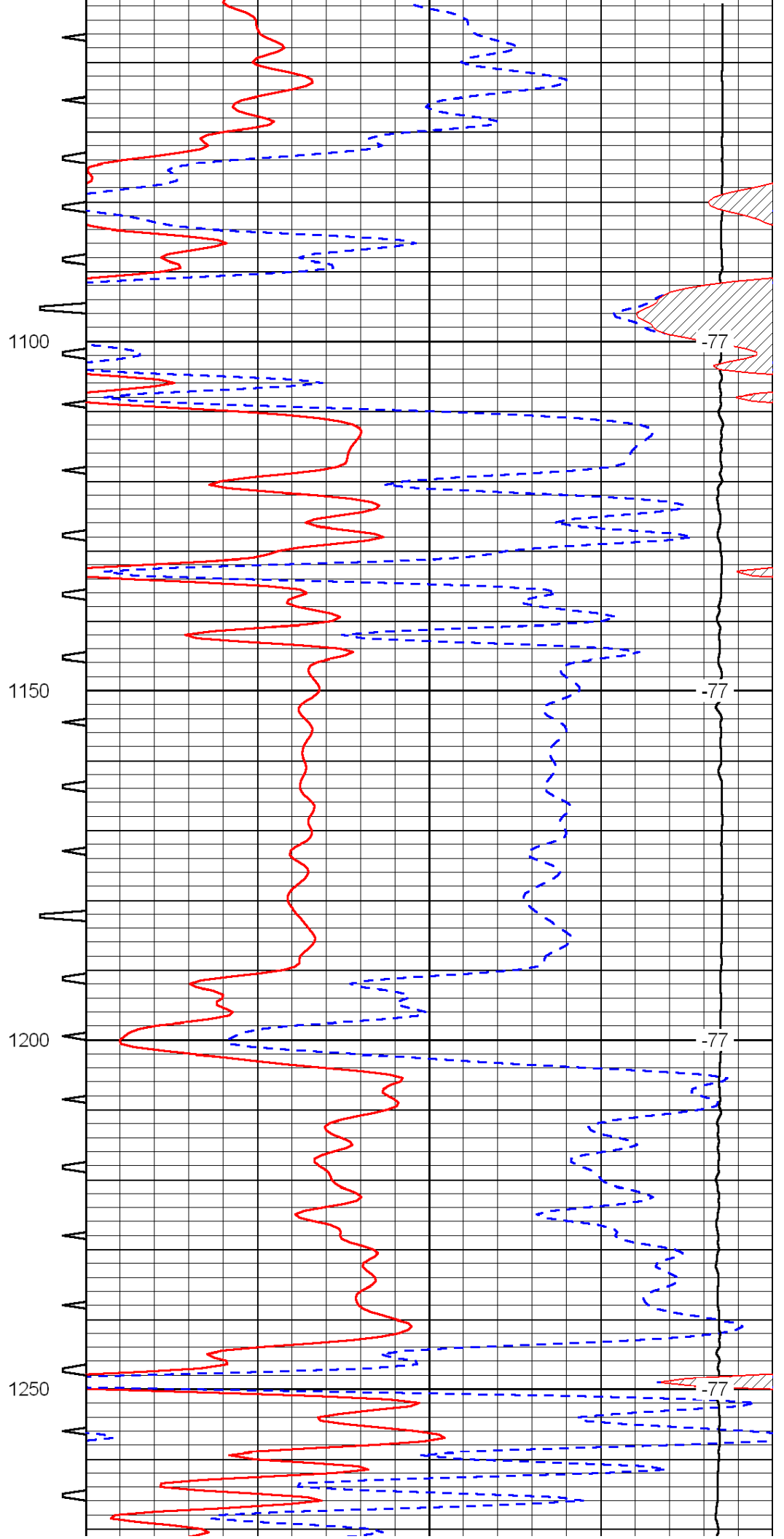
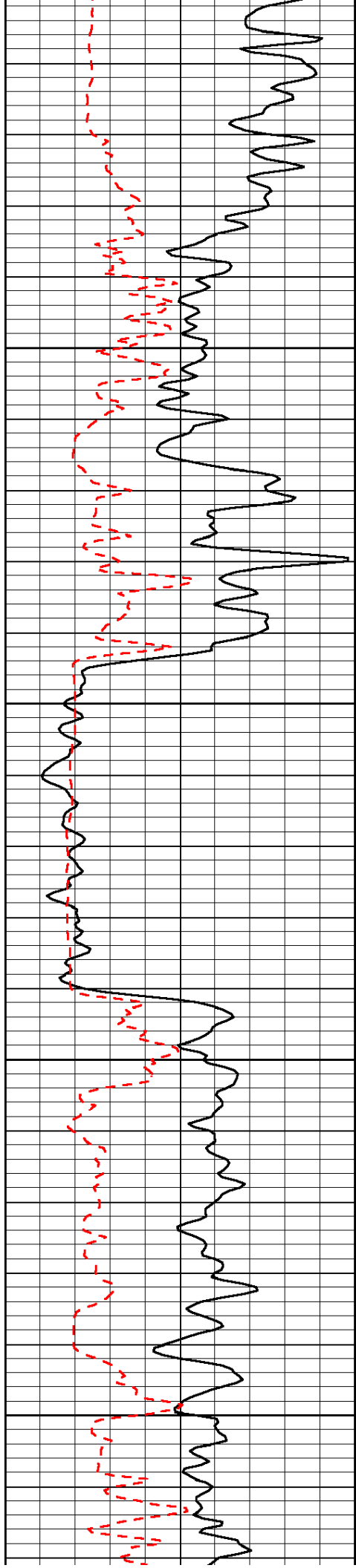
LSPD

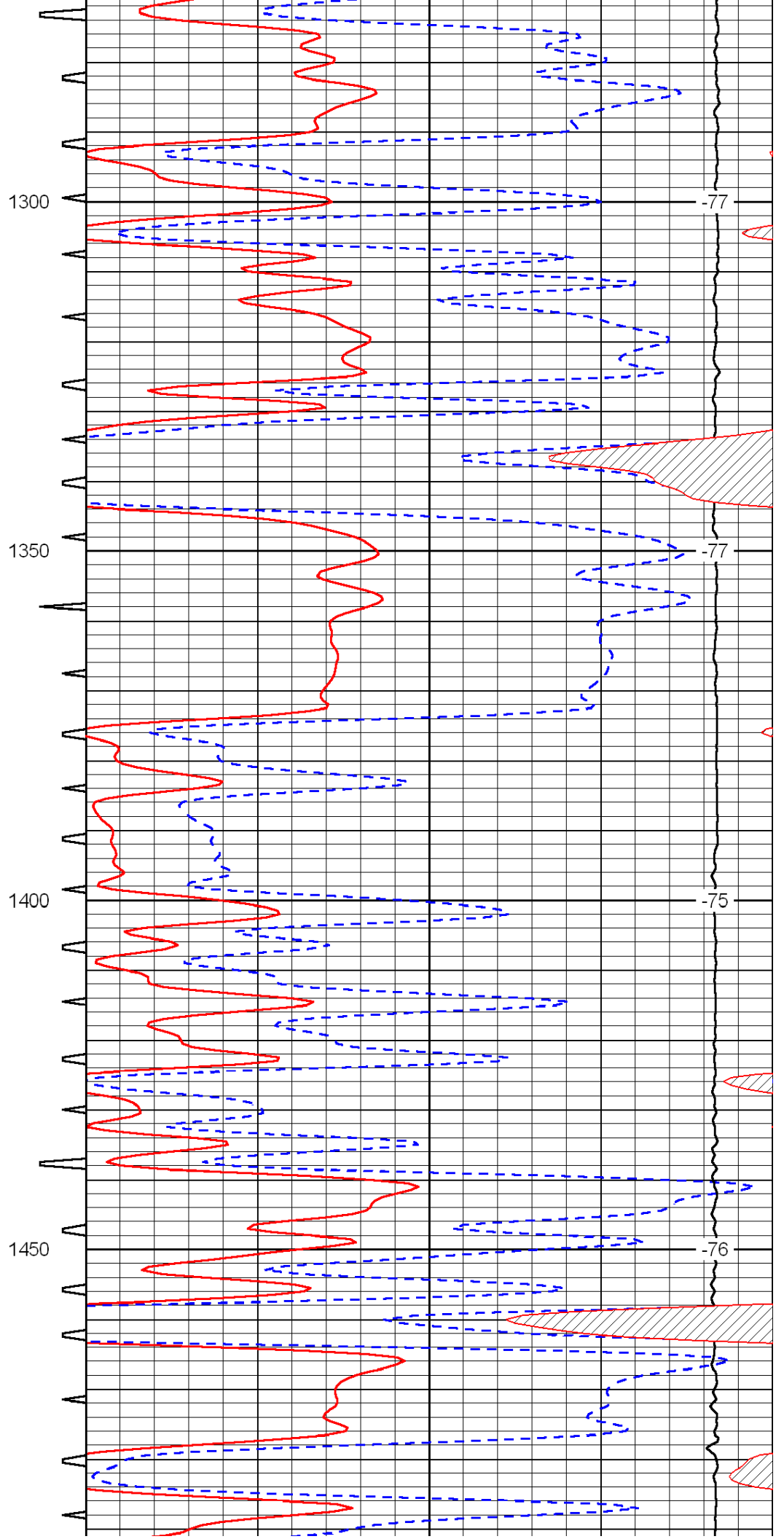
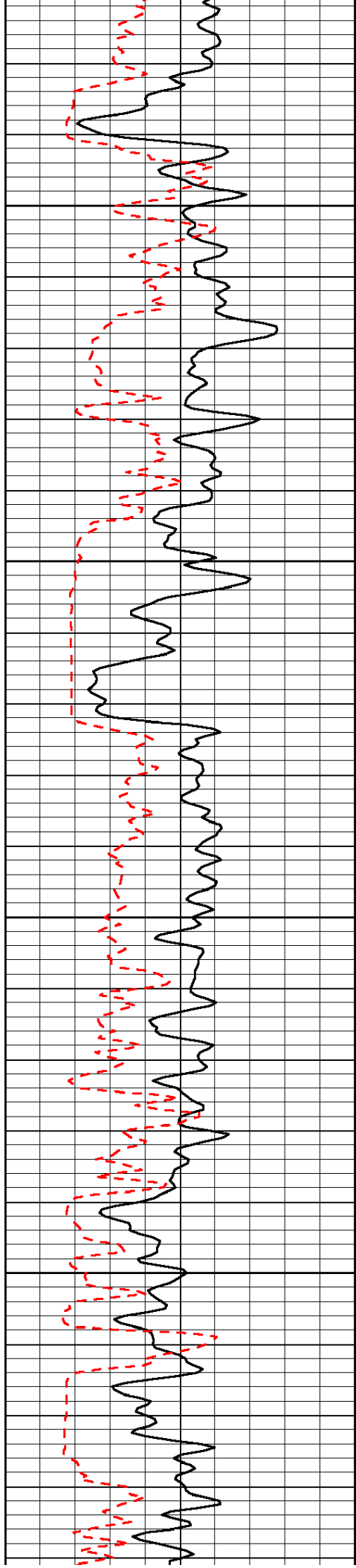


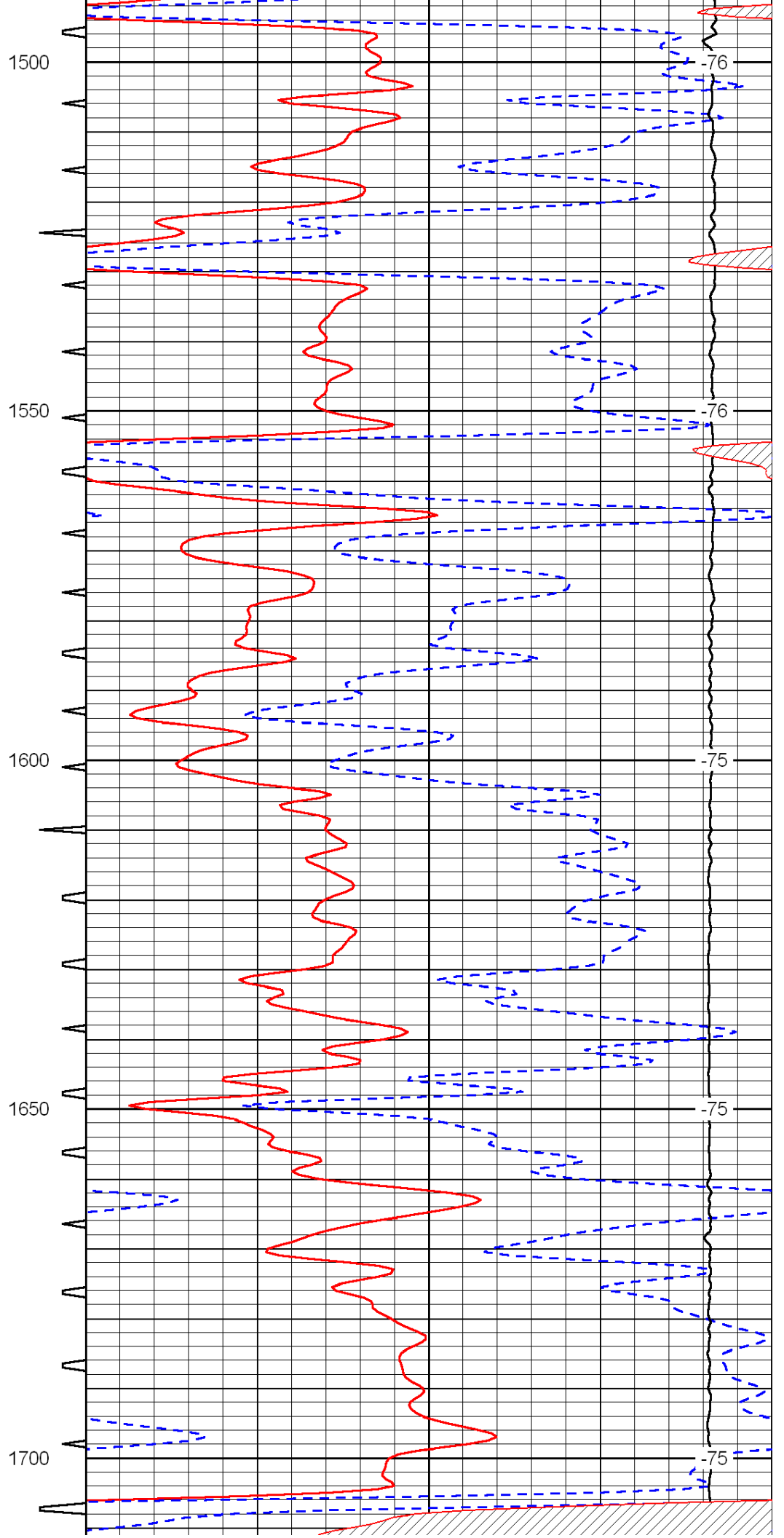
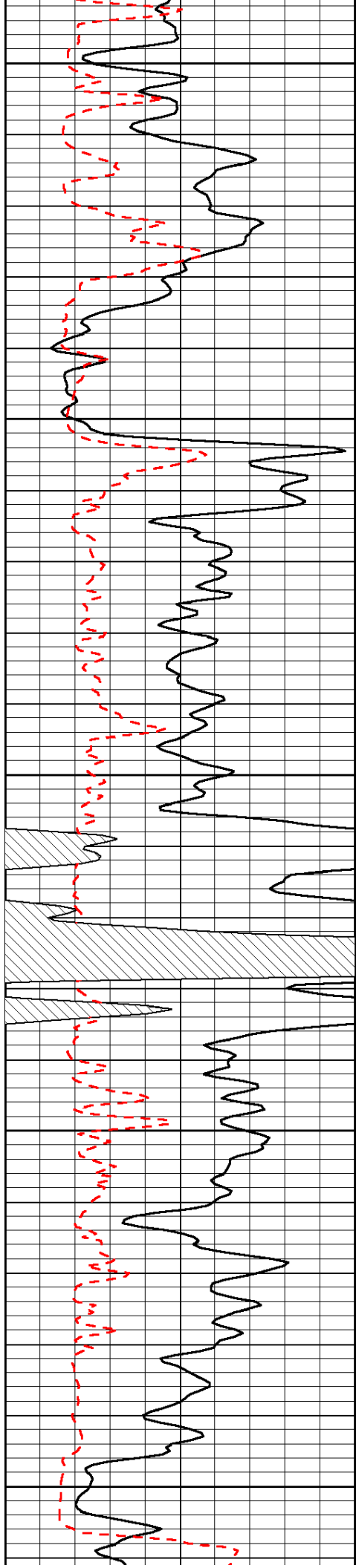


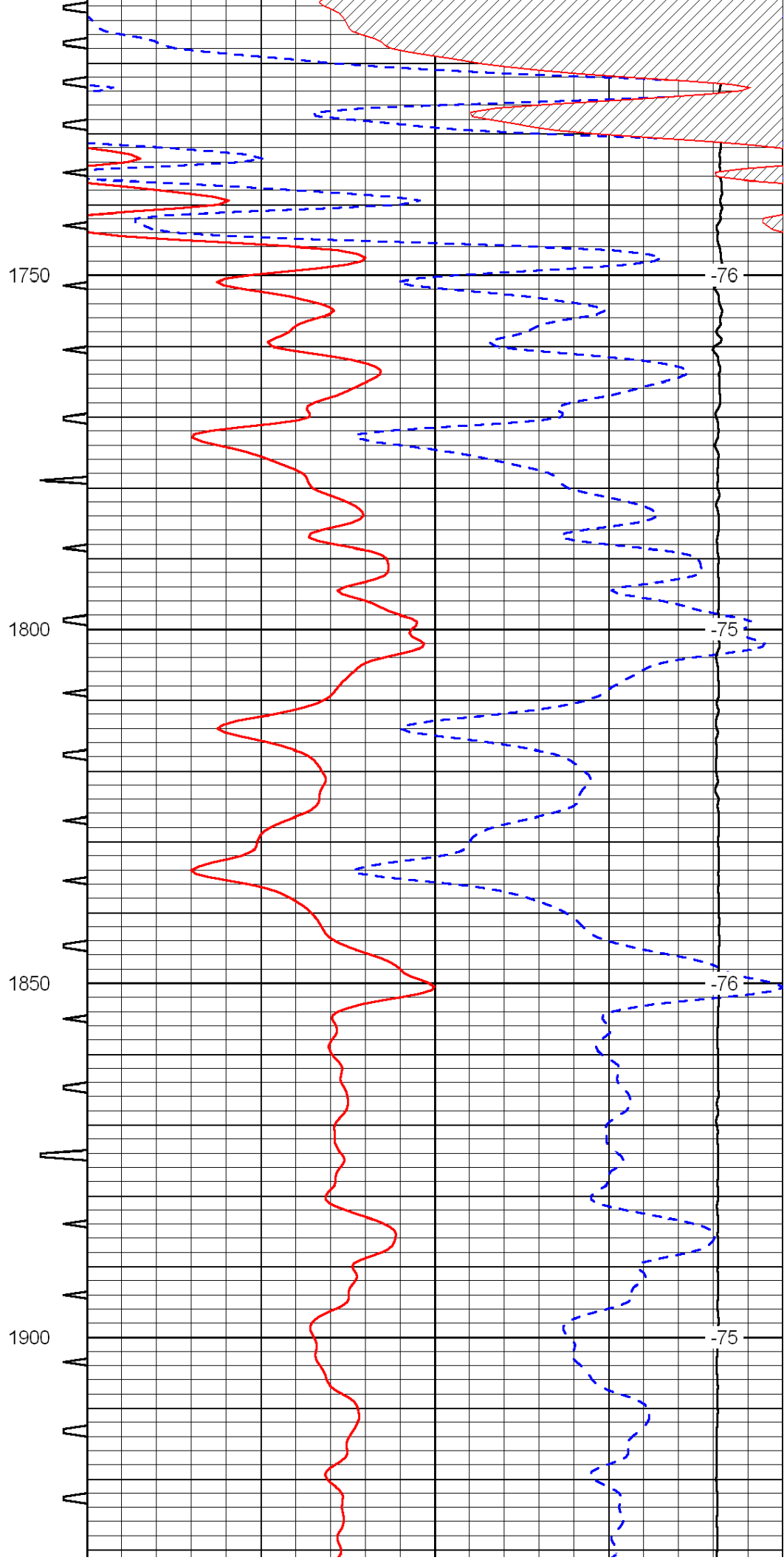
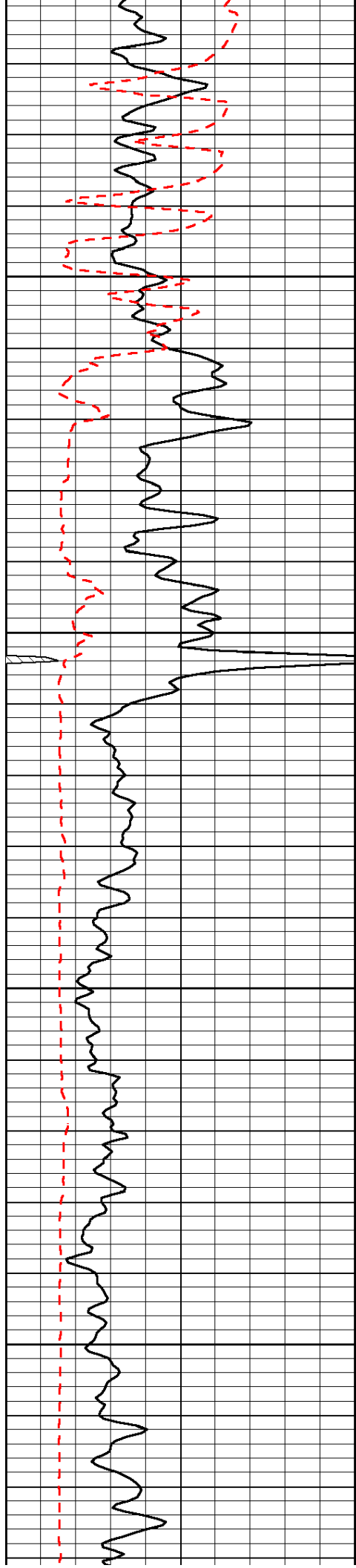


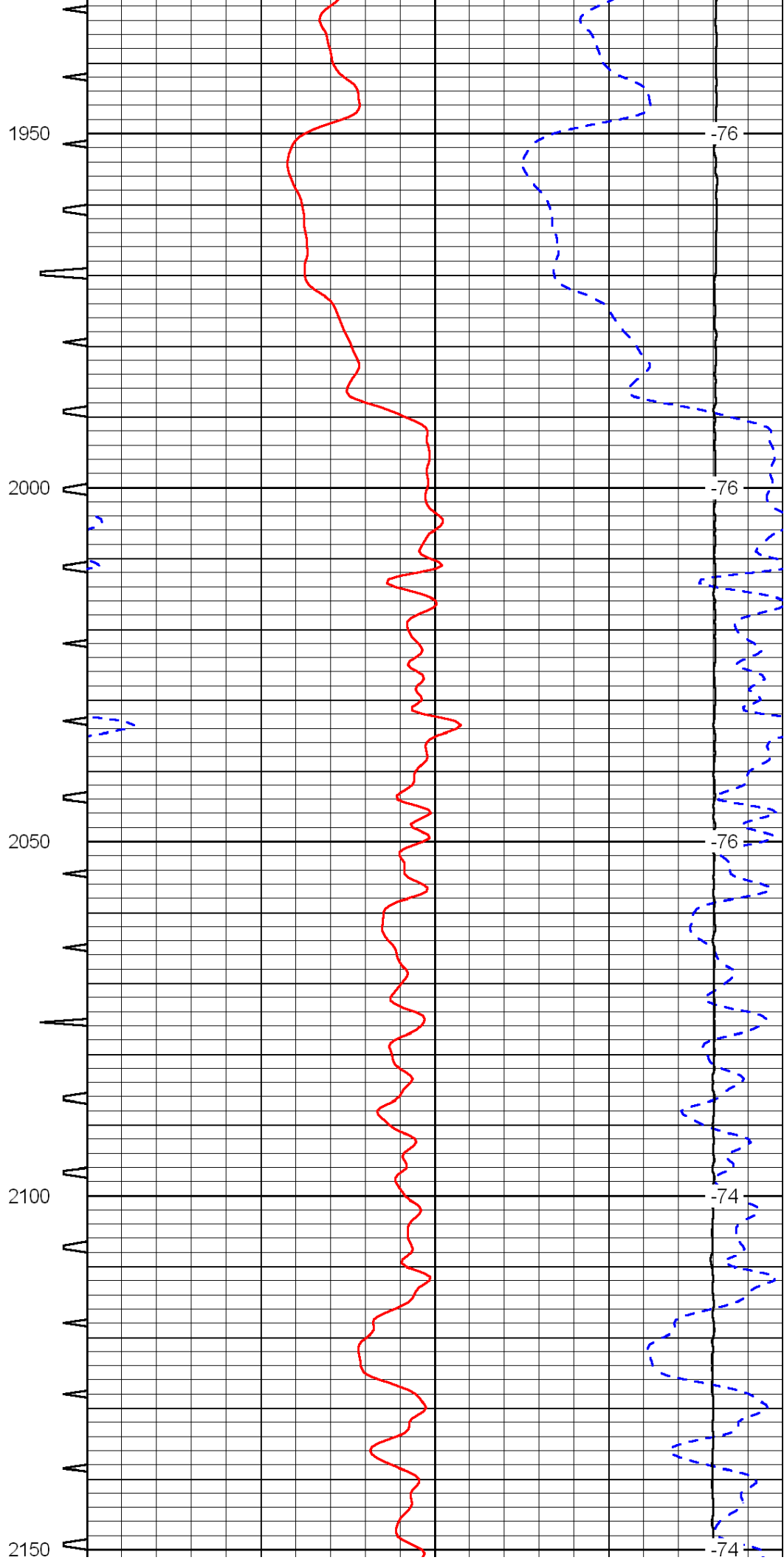
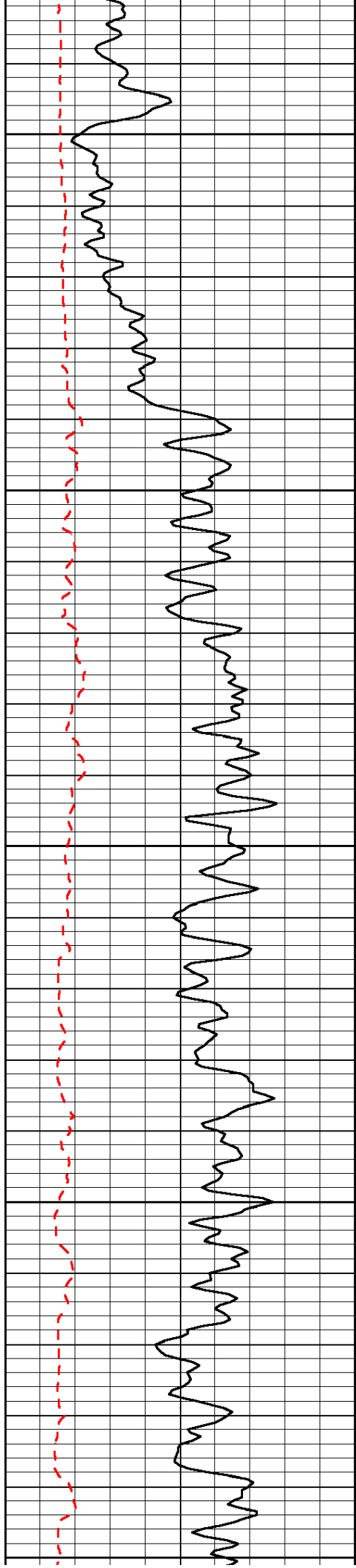


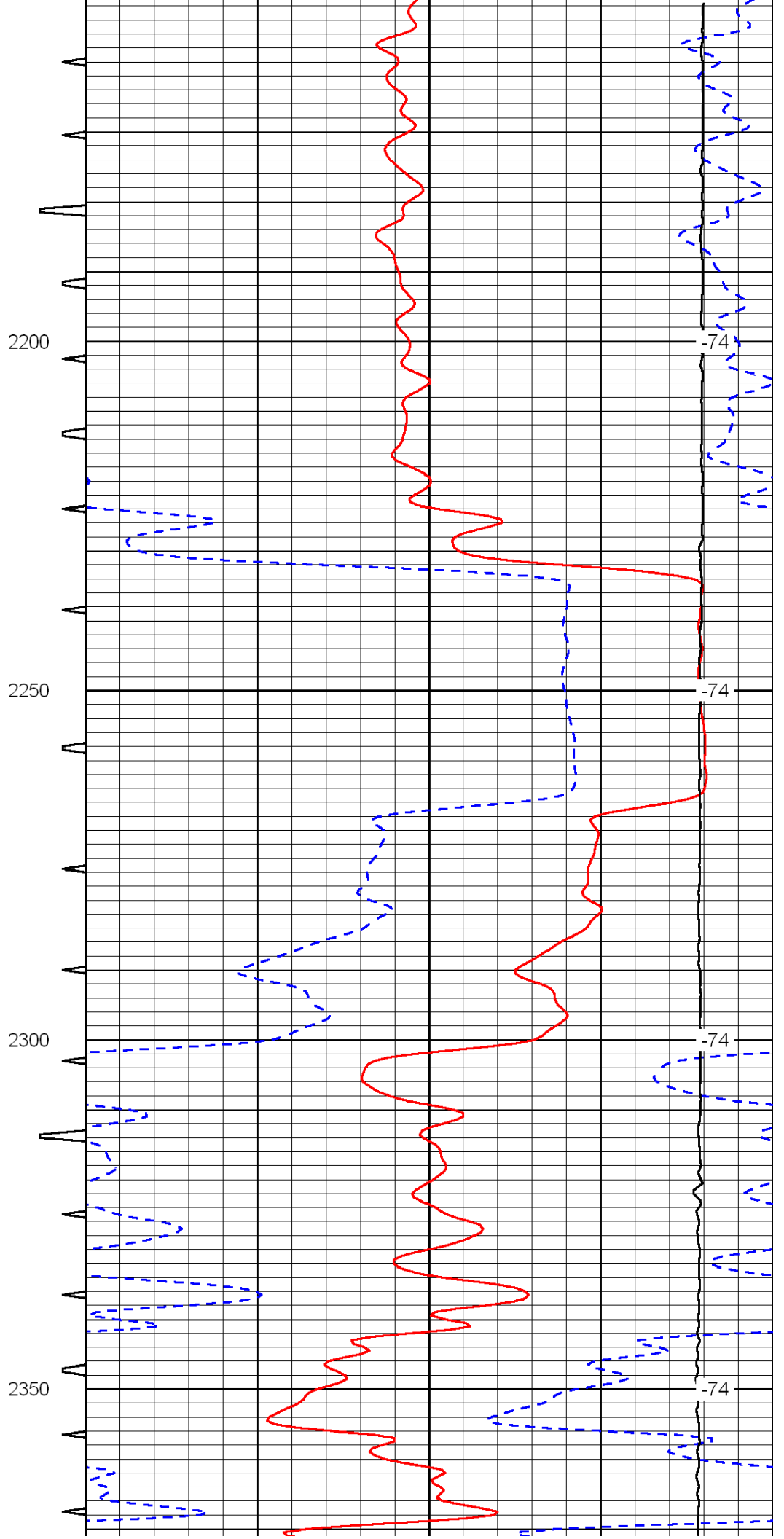
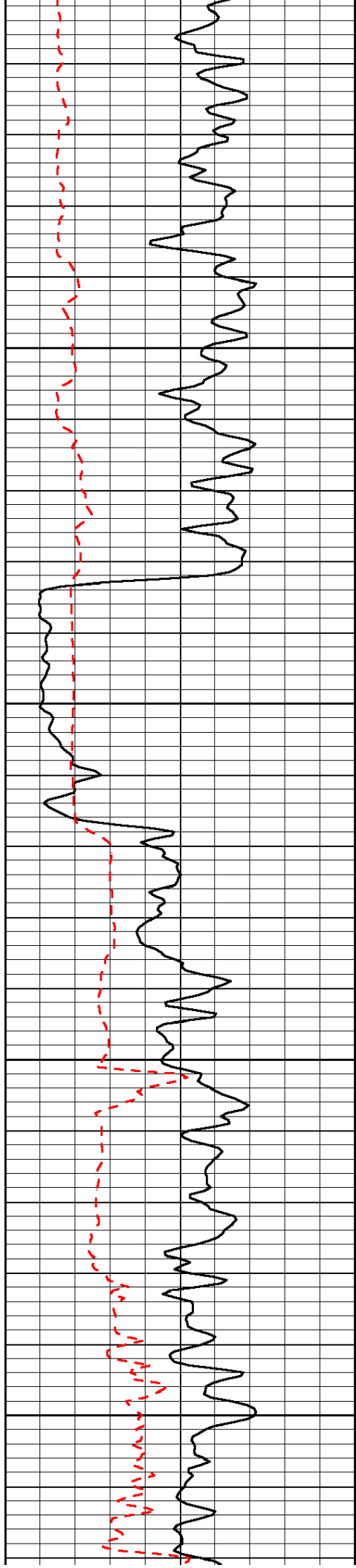


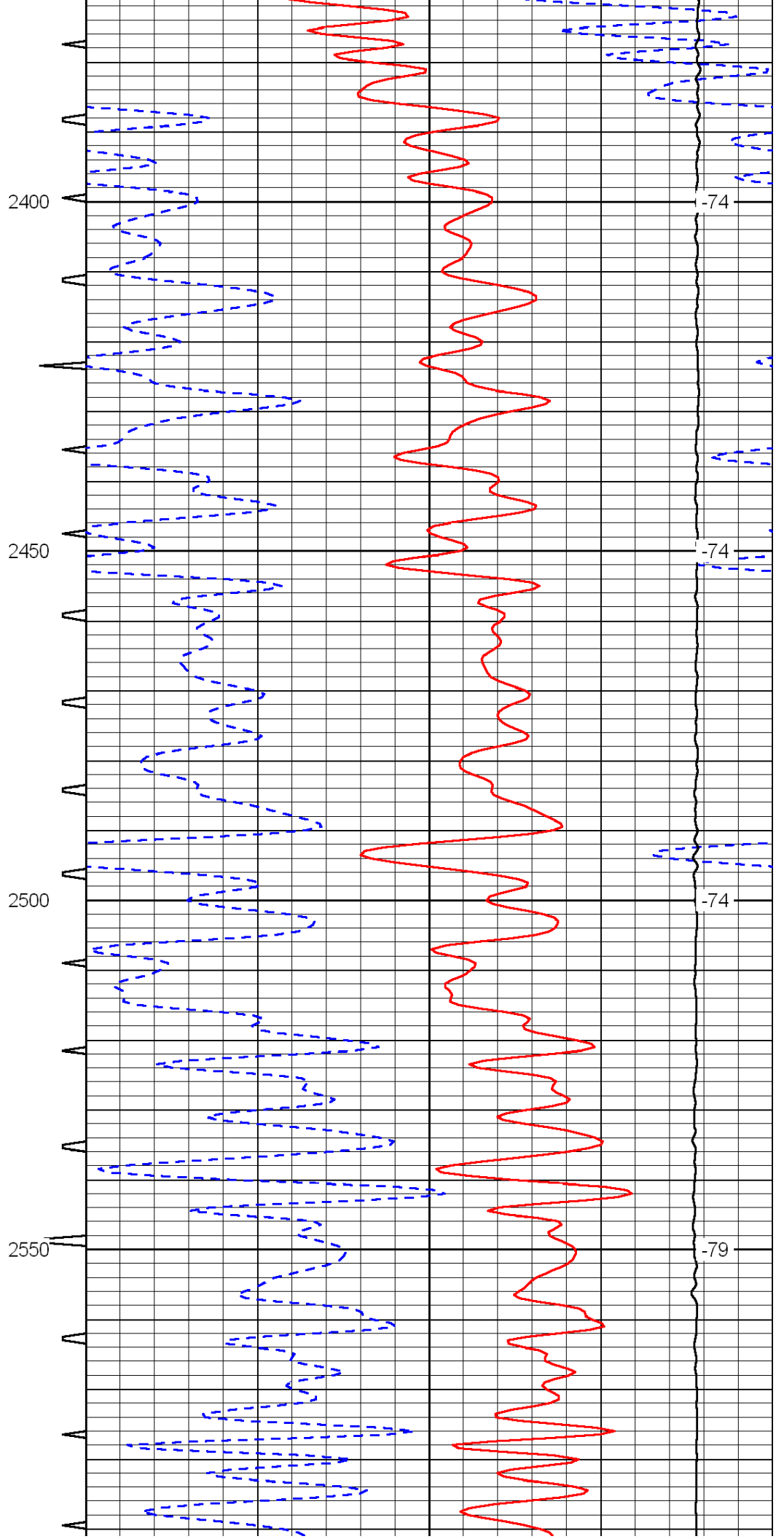
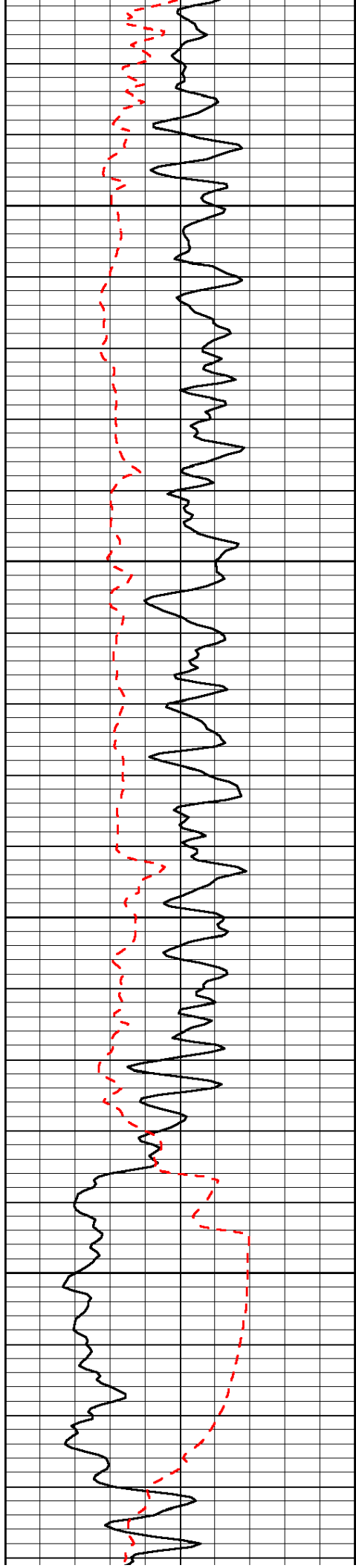


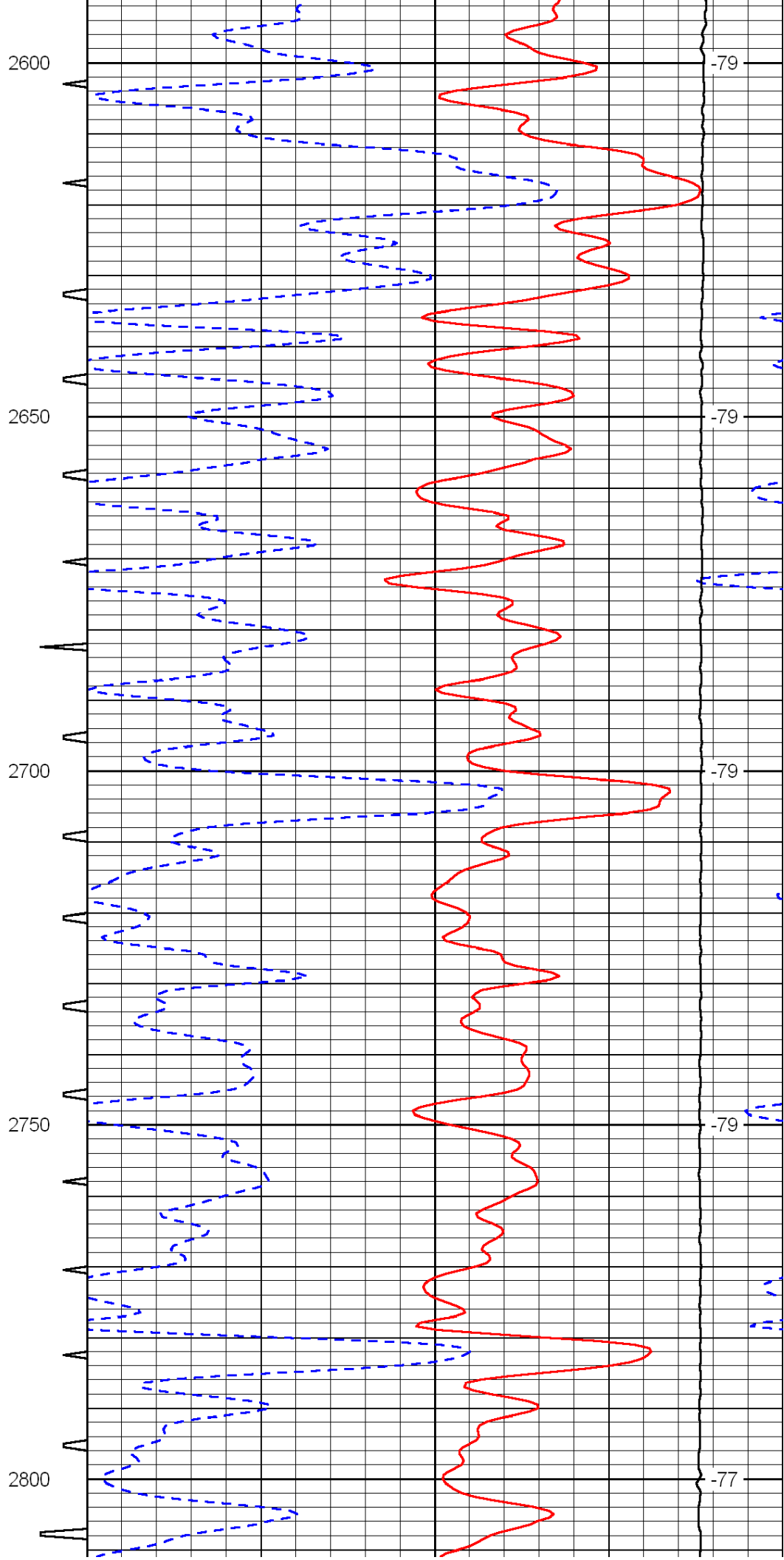
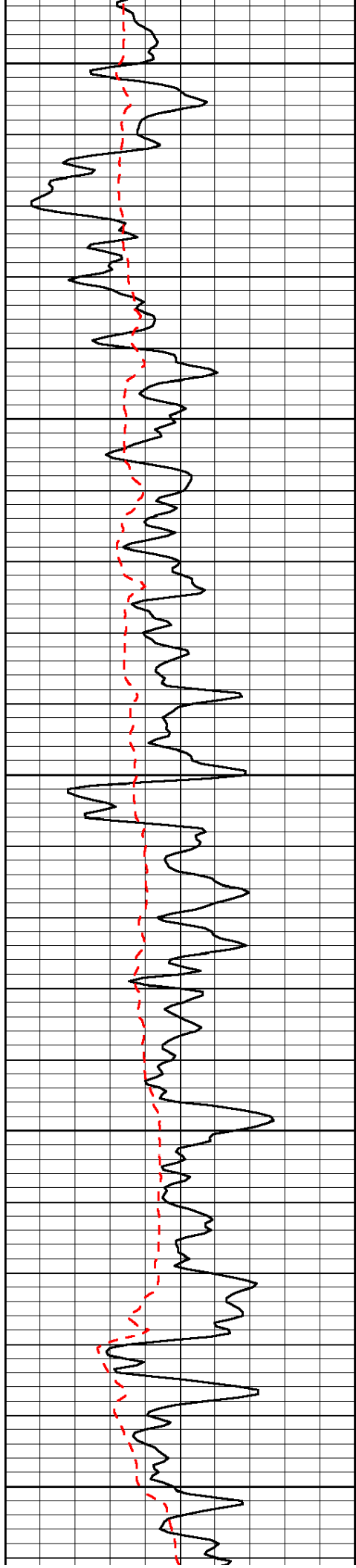


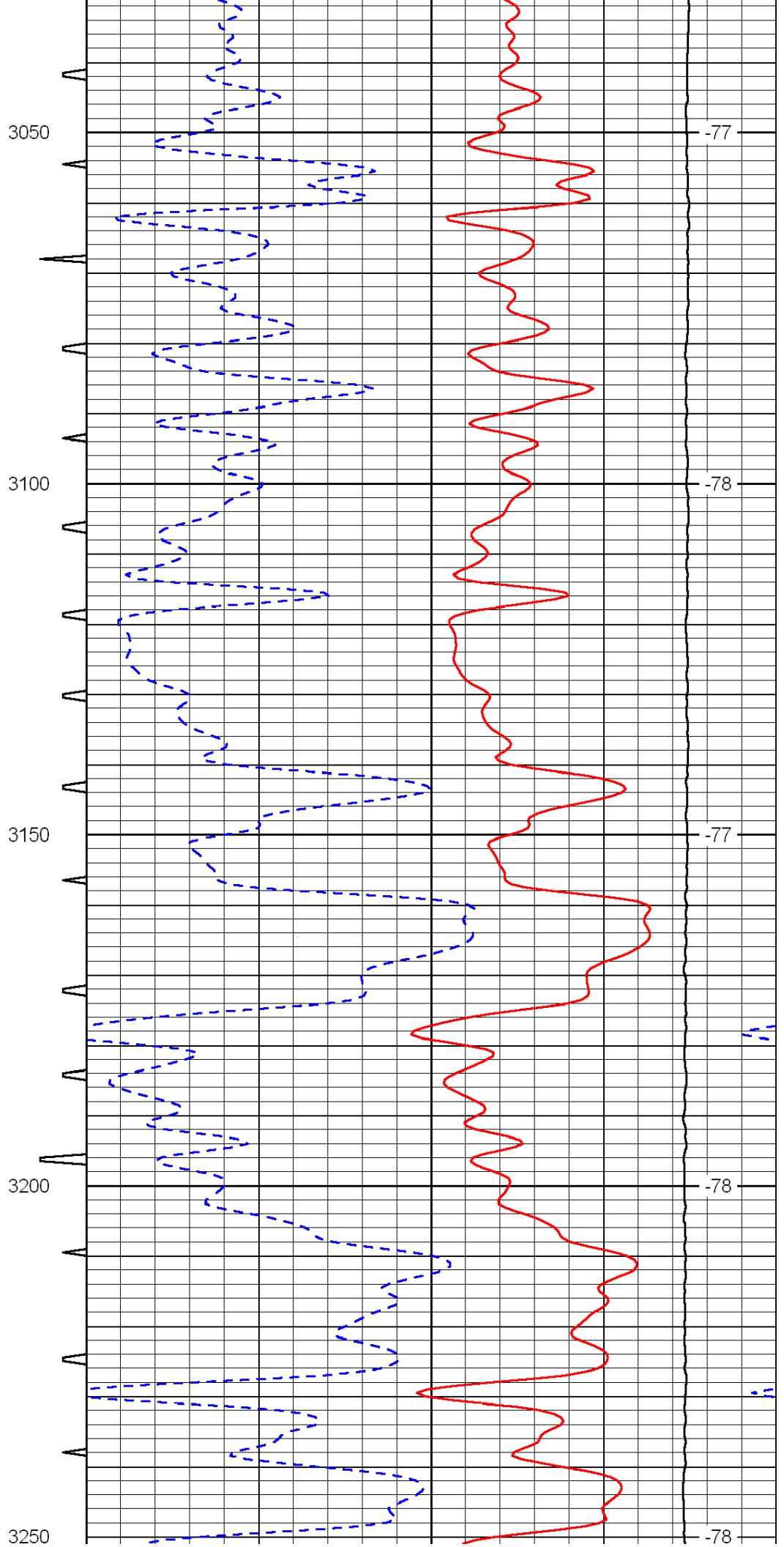
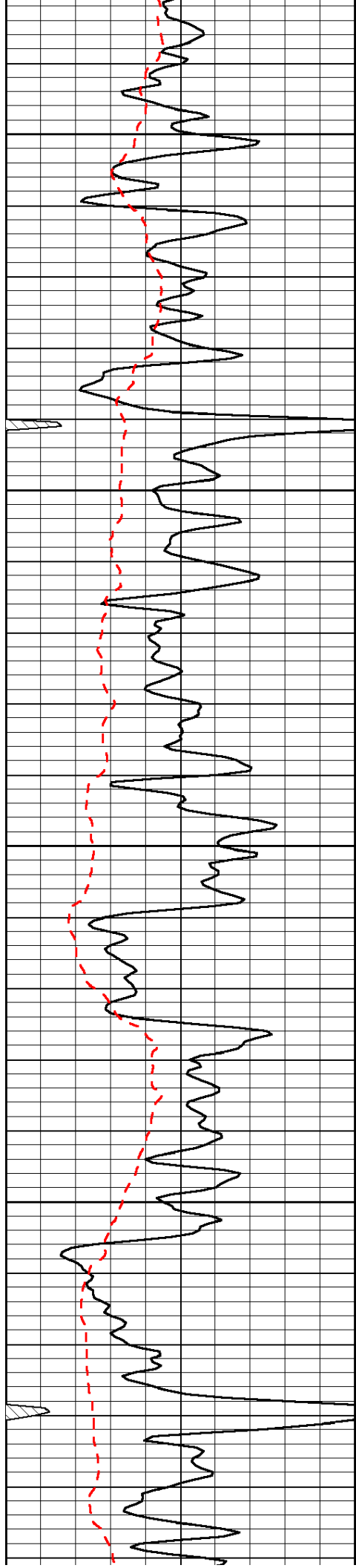


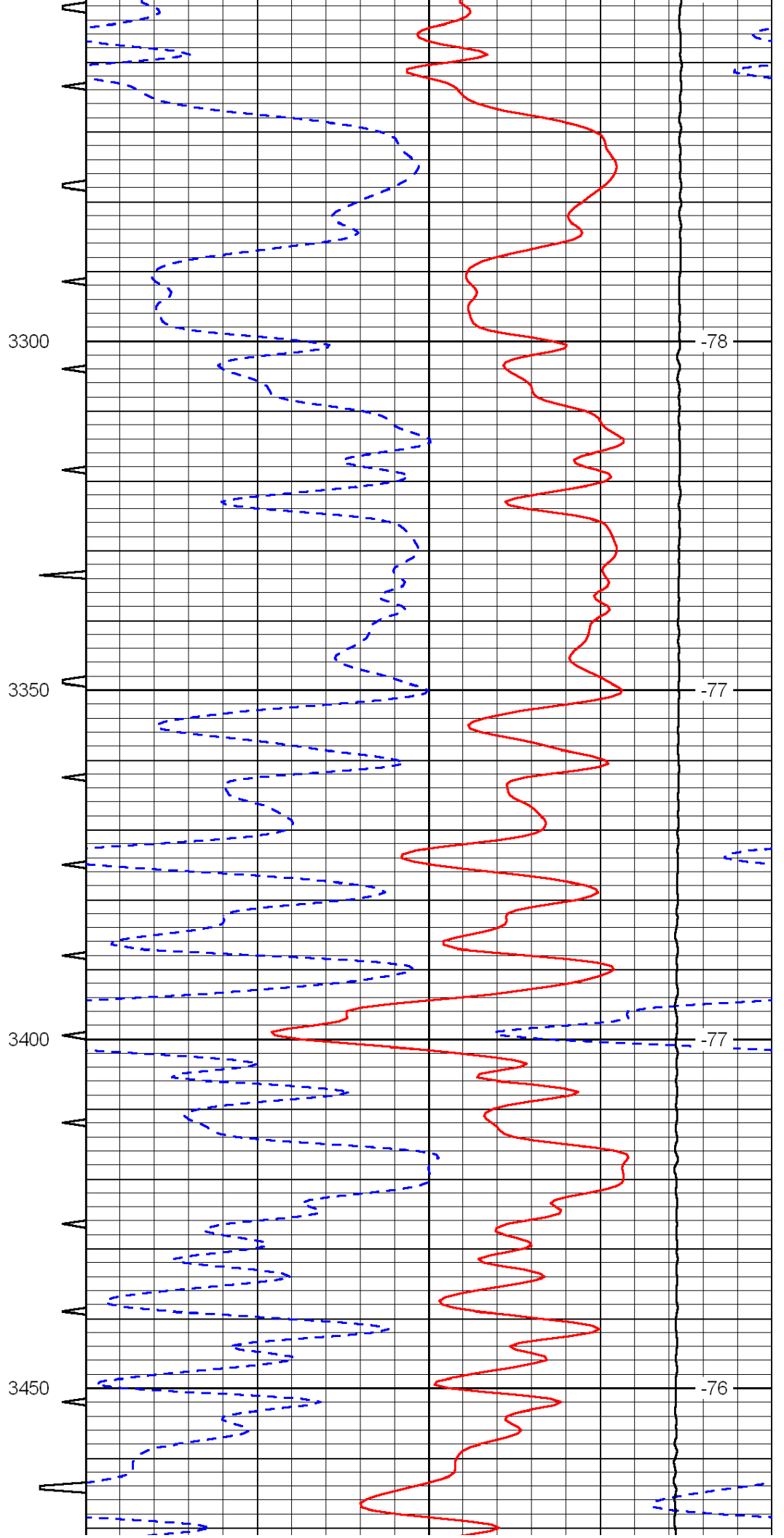
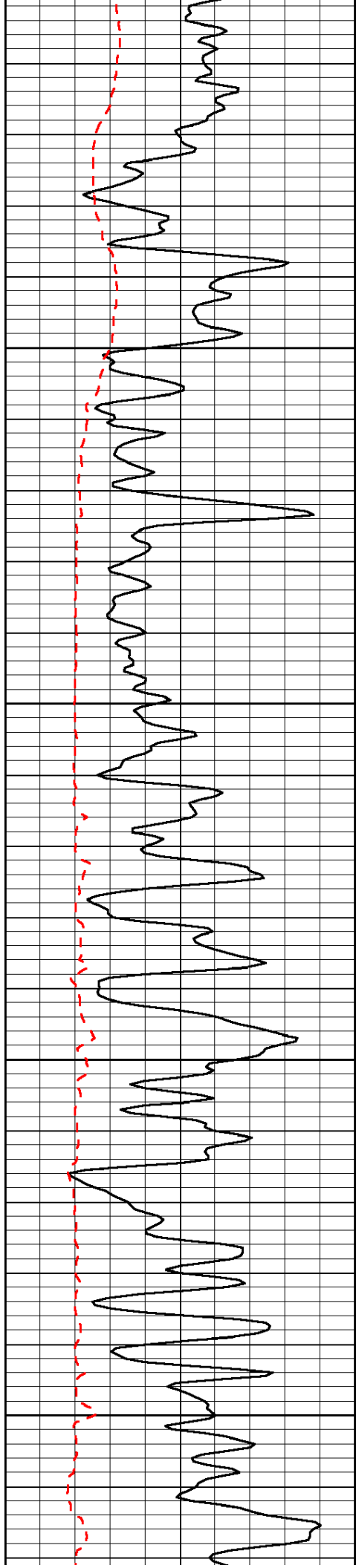


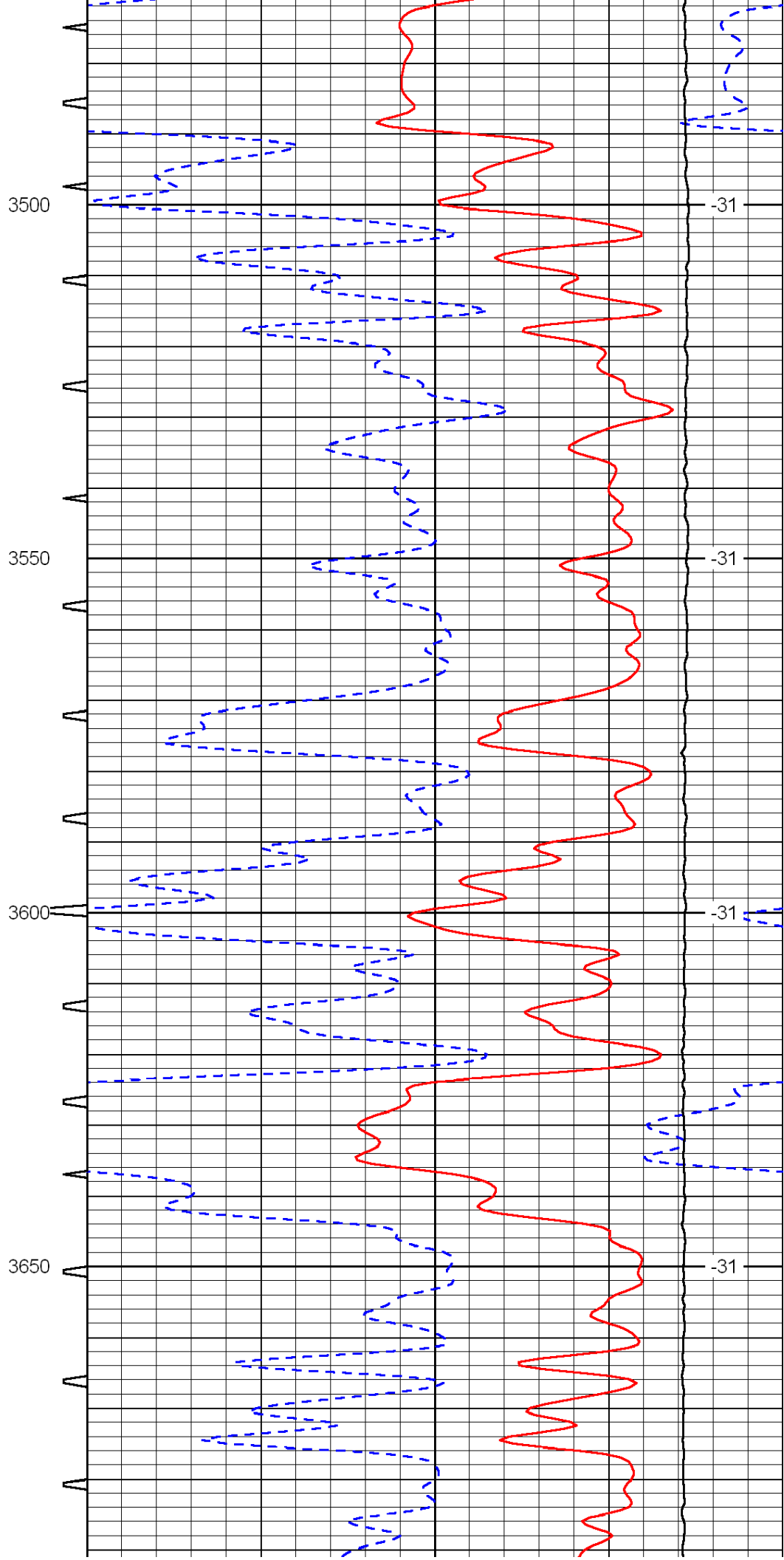
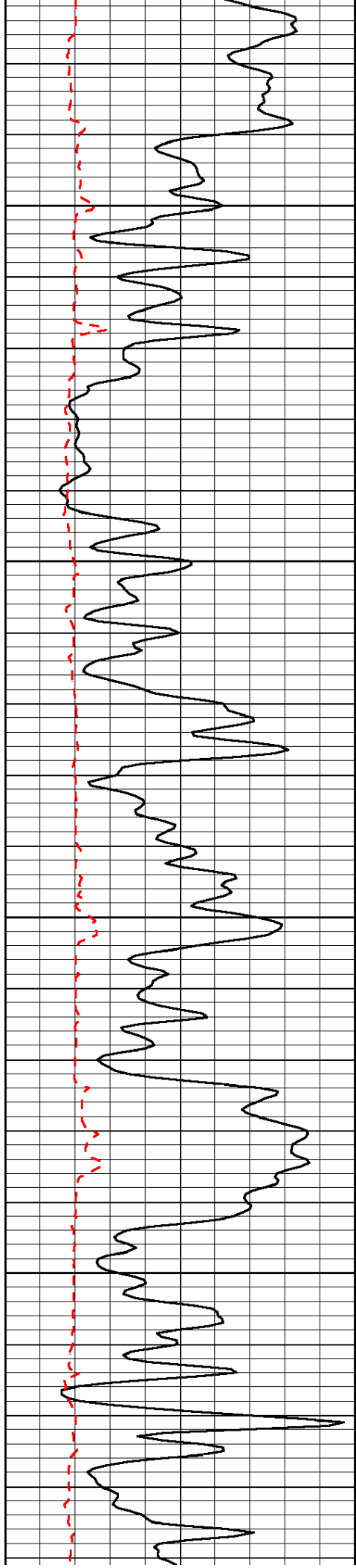


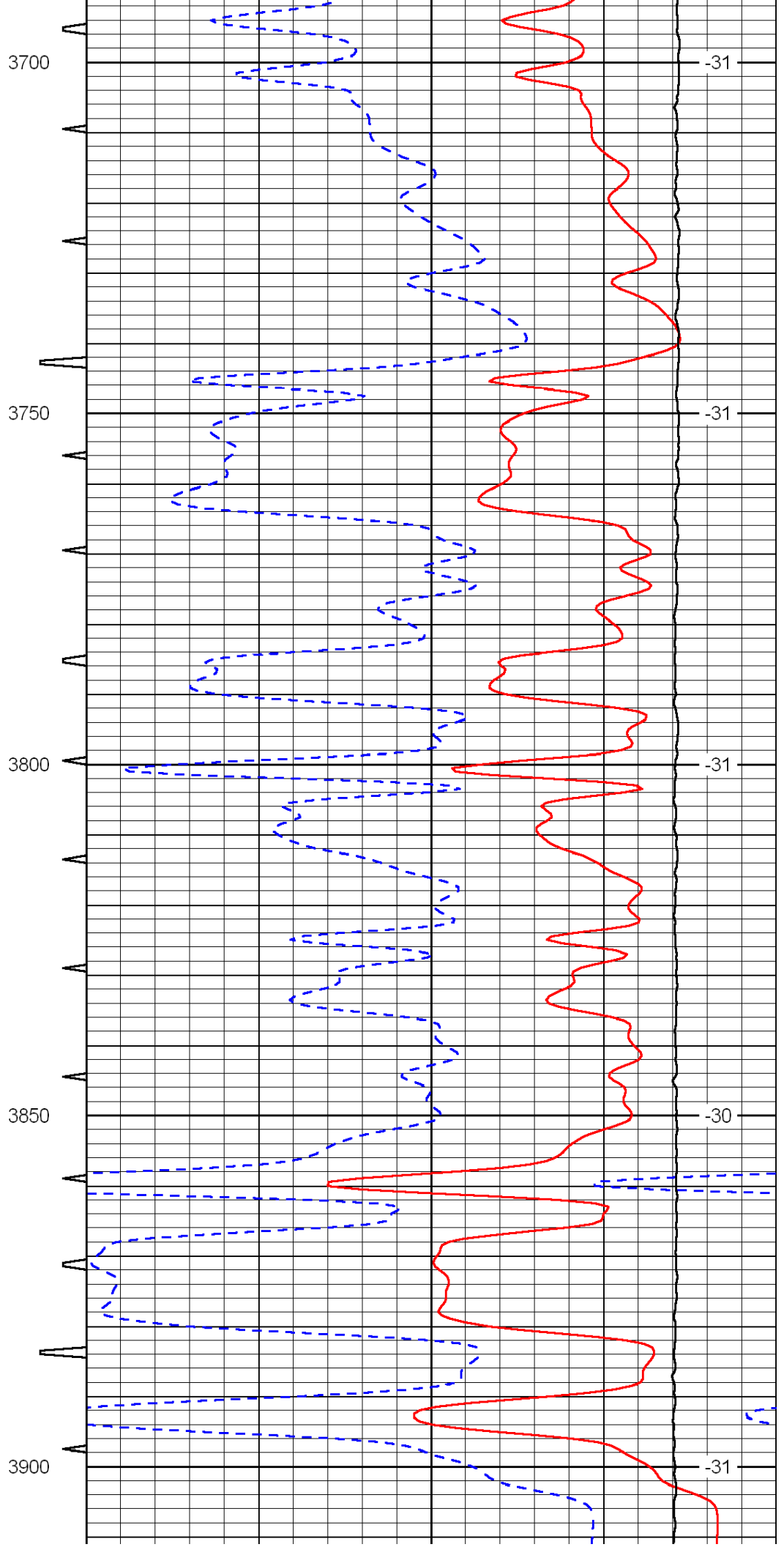
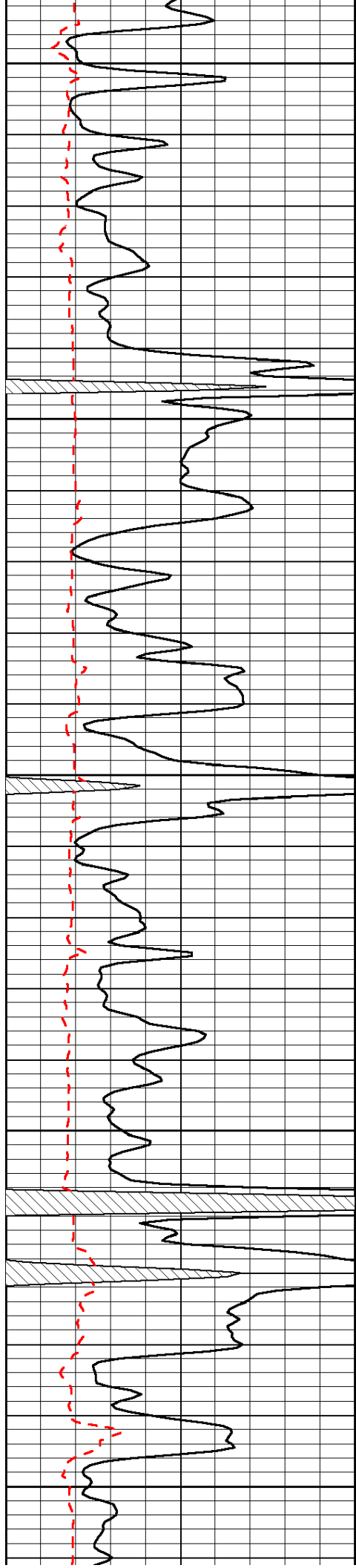


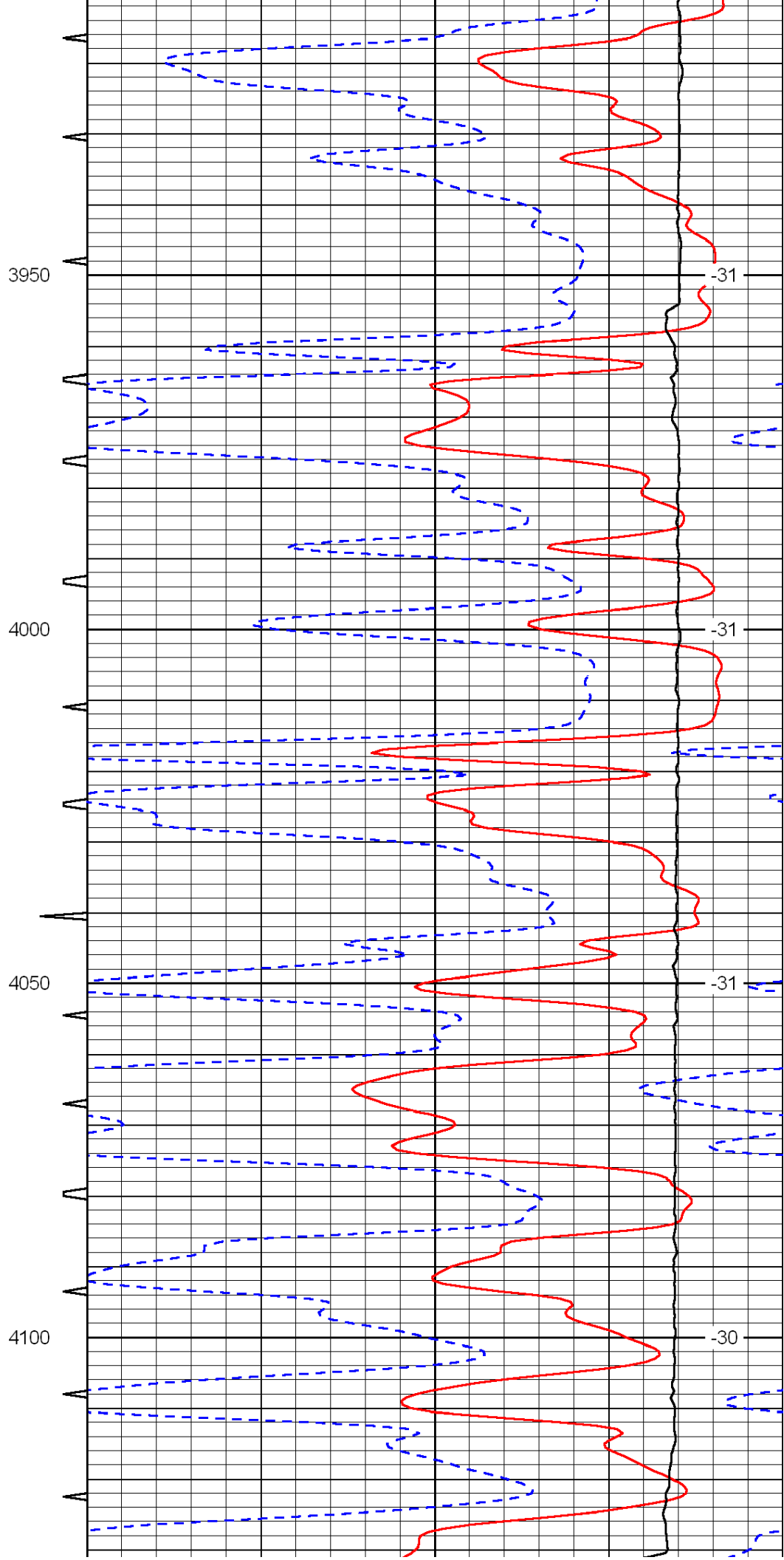
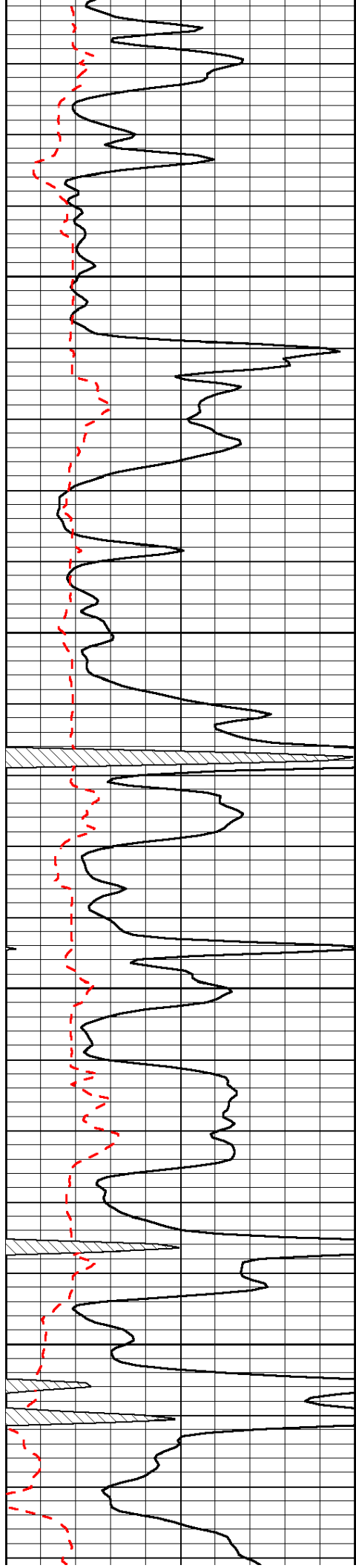


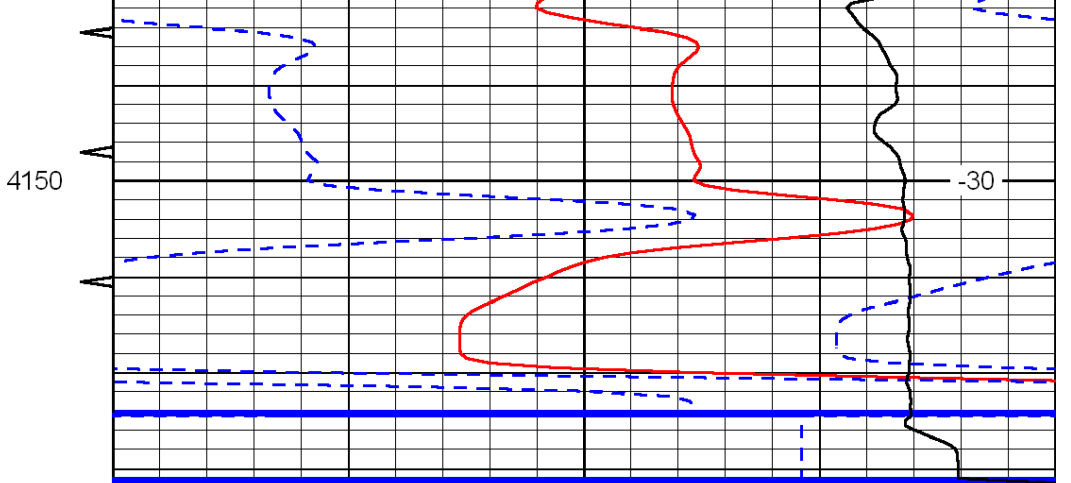
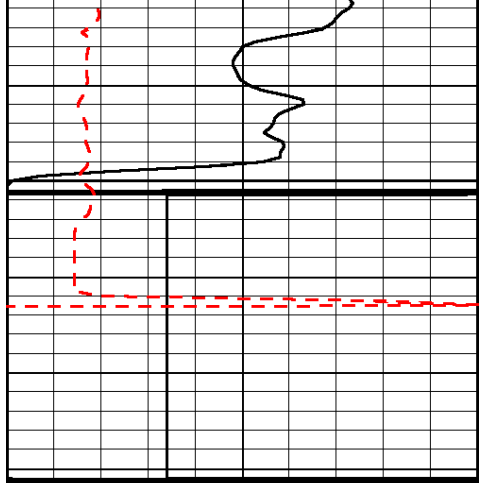












0	Gamma Ray	150	Sonic Int	140	Delta Time (usec/ft)	40
150	Gamma Ray	300	5	0	SPOR	-10
6	Caliper (GAPI)	16		15000	LTEN (lb)	0
						LSPD