



SUPERIOR
Hays,
Kansas

MICRO
LOG

Company NORSTAR PETROLEUM, INC.
Well NORTON #1-28
Field WILDCAT
County HODGEMAN
State KANSAS

Company NORSTAR PETROLEUM, INC.
Well NORTON #1-28
Field WILDCAT
County HODGEMAN State KANSAS

Location: API # : 15-083-21667-0000
838' FNL & 2306' FWL
SEC 28 TWP 21S RGE 23W
Permanent Datum GROUND LEVEL Elevation 2354
Log Measured From KELLY BUSHING 5' A.G.L.
Drilling Measured From KELLY BUSHING
Other Services
CDL/CNL
DIL
Elevation
K.B. 2359
D.F. 2357
G.L. 2354

Date	8-16-10
Run Number	TWO
Depth Driller	4665
Depth Logger	4667
Bottom Logged Interval	4665
Top Log Interval	3600
Casing Driller	8 5/8" @ 209
Casing Logger	206
Bit Size	7 7/8
Type Fluid in Hole	CHEMICAL MUD
Density / Viscosity	9.1/46
pH / Fluid Loss	9.0/13.6
Source of Sample	FLOWLINE
Rim @ Meas. Temp	.60 @ 83F
Rmf @ Meas. Temp	.45 @ 83F
Rmc @ Meas. Temp	.72 @ 83F
Source of Rmf / Rmc	MEASURED
Rim @ BHT	.41 @ 121F
Time Circulation Stopped	2 HOURS
Time Logger on Bottom	
Maximum Recorded Temperature	121F
Equipment Number	680
Location	HAYS, KS.
Recorded By	JASON CAPPELLUCCI
Witnessed By	TIM LAUER

<<< Fold Here >>>

All interpretations are opinions based on inferences from electrical or other measurements and we cannot and do not guarantee the accuracy or correctness of any interpretation, and we shall not, except in the case of gross or willful negligence on our part, be liable or responsible for any loss, costs, damages, or expenses incurred or sustained by anyone resulting from any interpretation made by any of our officers, agents or employees. These interpretations are also subject to our general terms and conditions set out in our current Price Schedule.

Comments

THANK YOU FOR USING SUPERIOR WELL SERVICE (785) 628-6395
DIRECTIONS
NESS CITY KS. - 14 S. TO UNION SCHOOL (RD V) - 1 E. - 1 S. - 1 1/2 E. - S. INTO

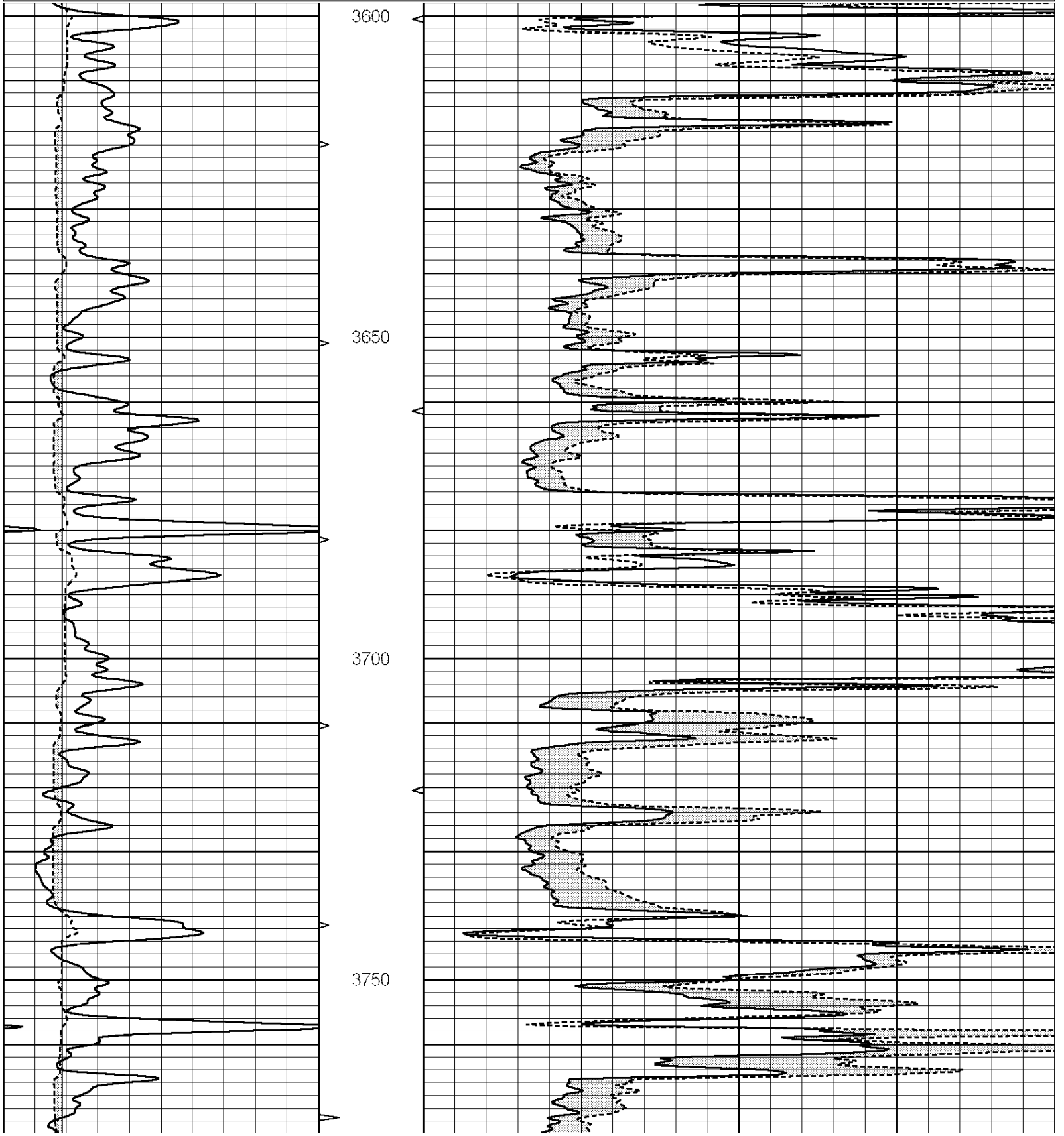


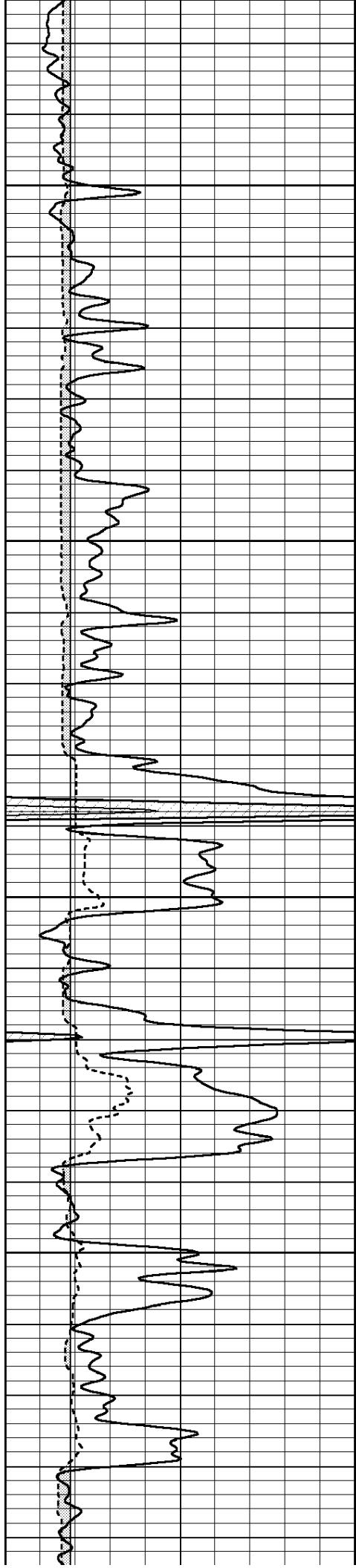
SUPERIOR
Hays,
Kansas

MAIN SECTION

Database File: 004946pe.db
 Dataset Pathname: pass7.1
 Presentation Format: _micro
 Dataset Creation: Mon Aug 16 13:35:40 2010 by Calc Open-Cased 090629
 Charted by: Depth in Feet scaled 1:240

0	GAMMA RAY (GAPI)	150	ABHV	0	MEL1.5 (Ohm-m)	40
6	CALIPER (in)	16	10 (ft3)	0 0	MEL2.0 (Ohm-m)	40
			TBHV			
			0 (ft3)	10		



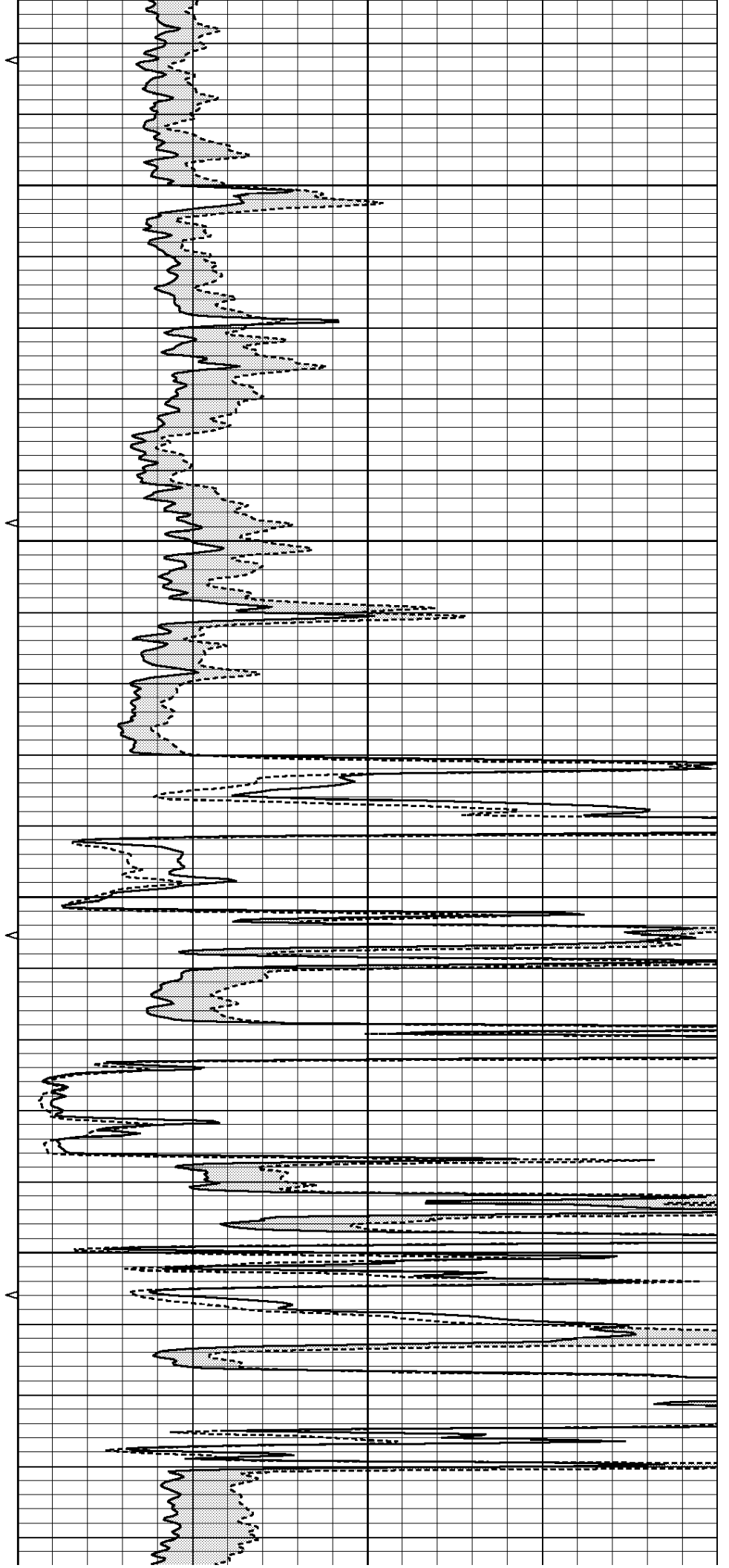


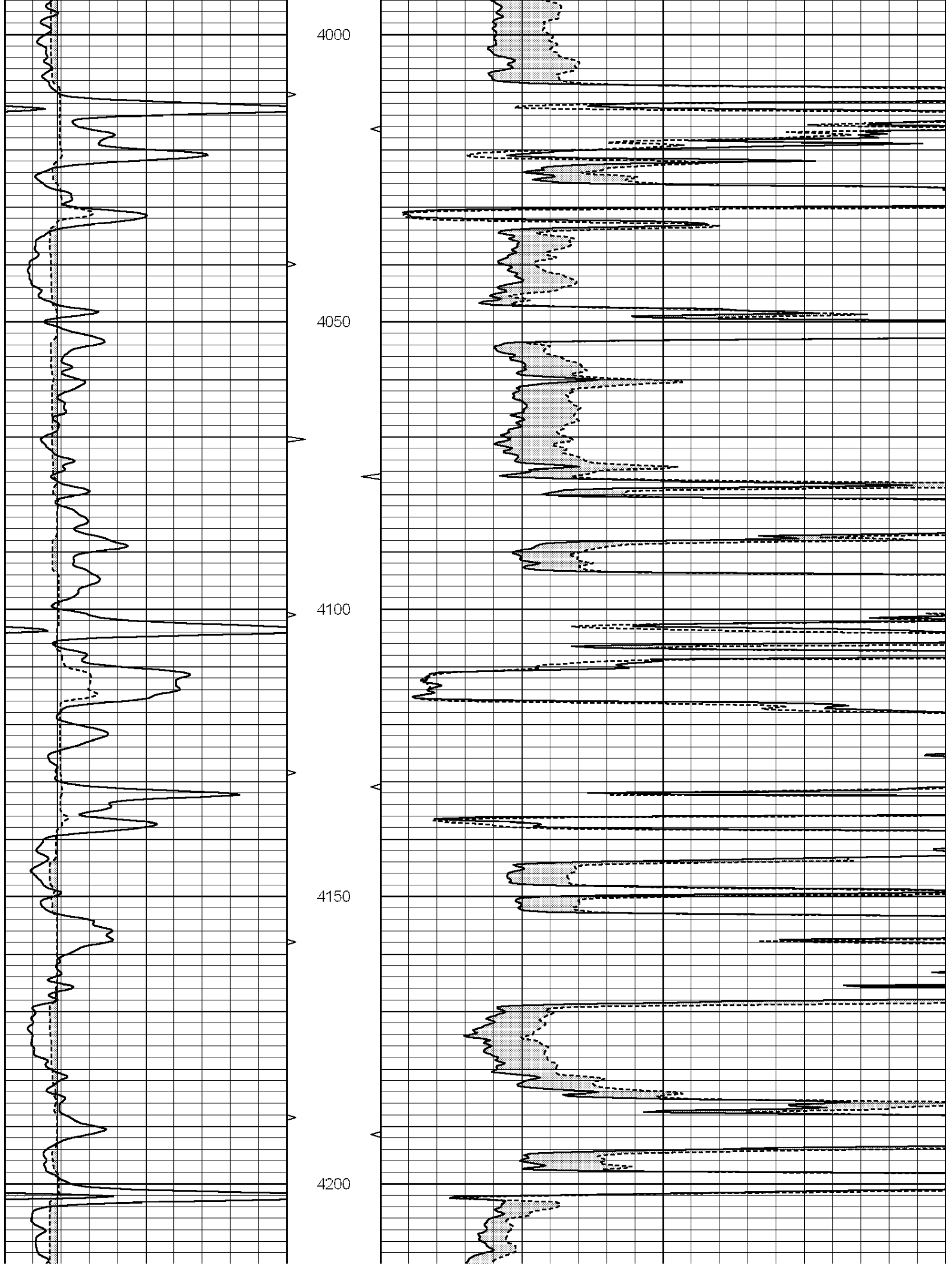
3800

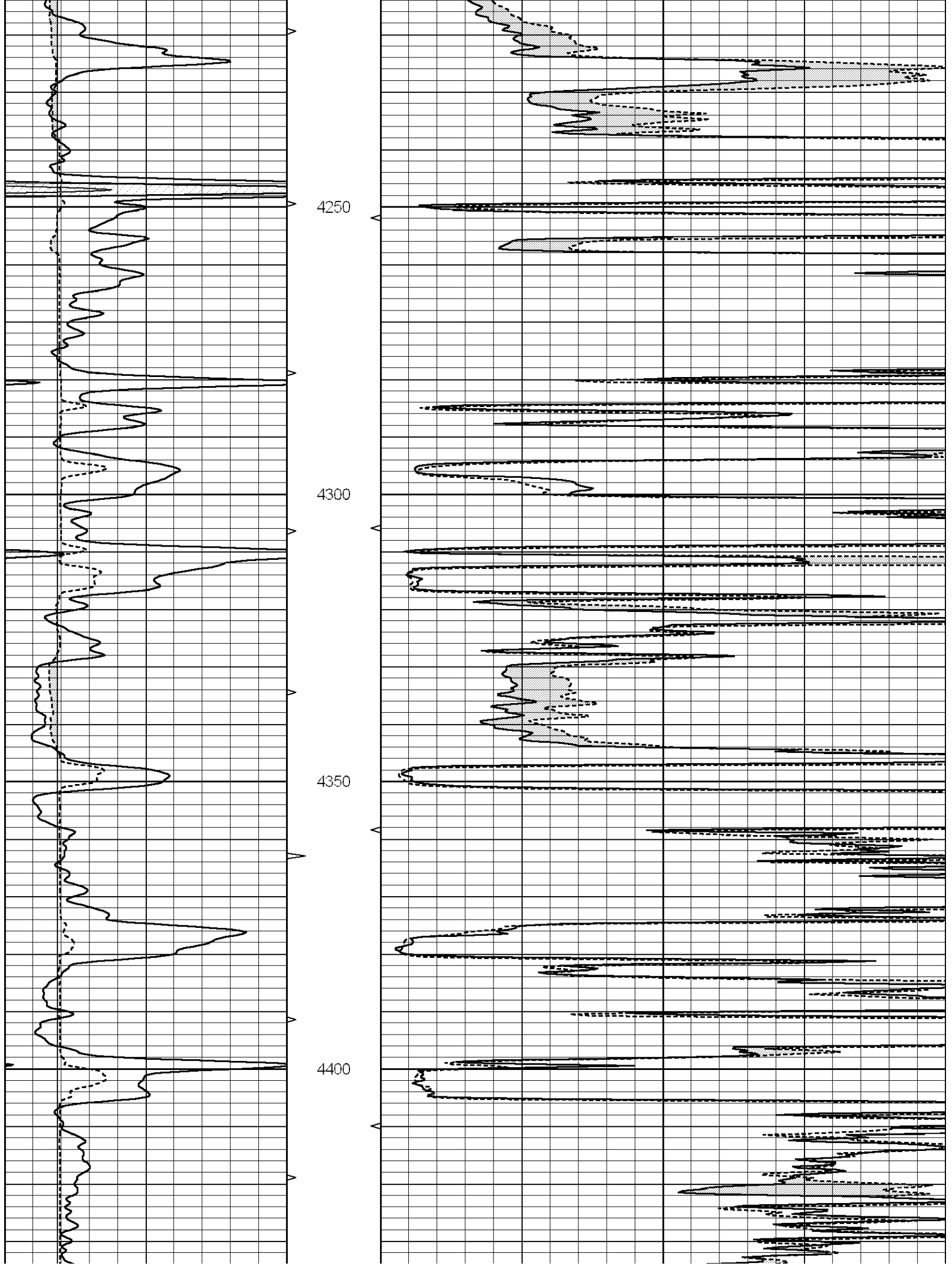
3850

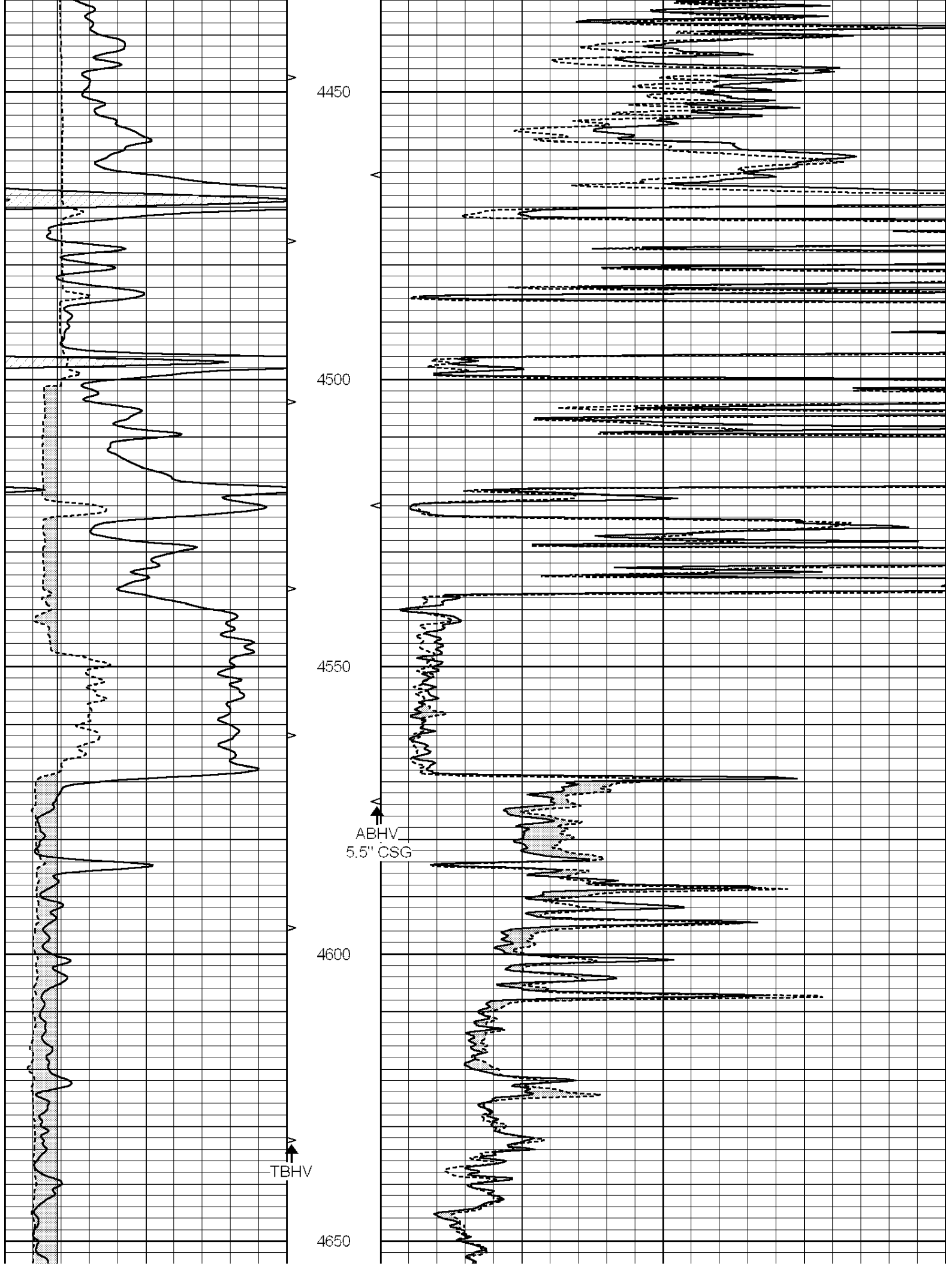
3900

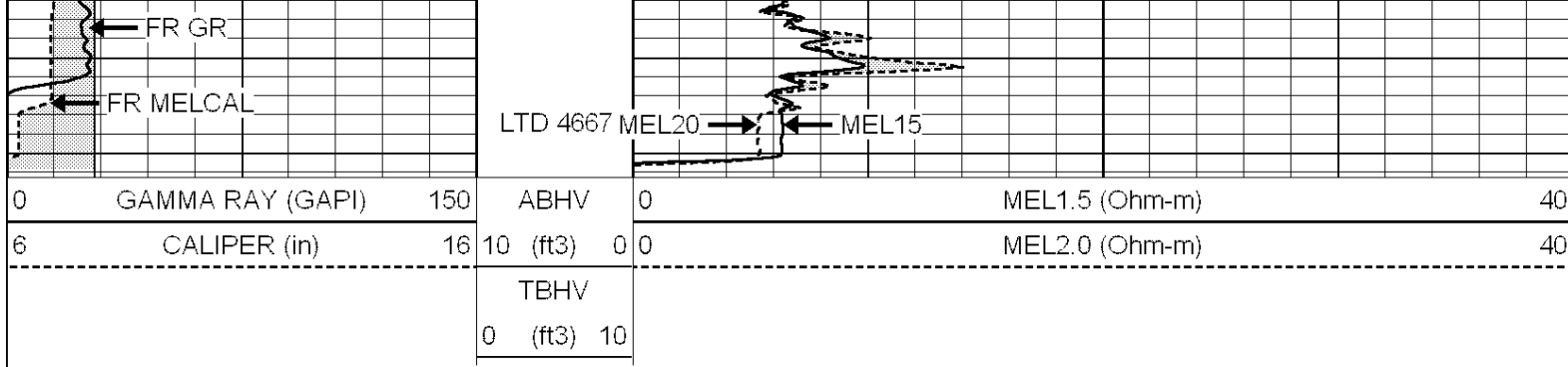
3950







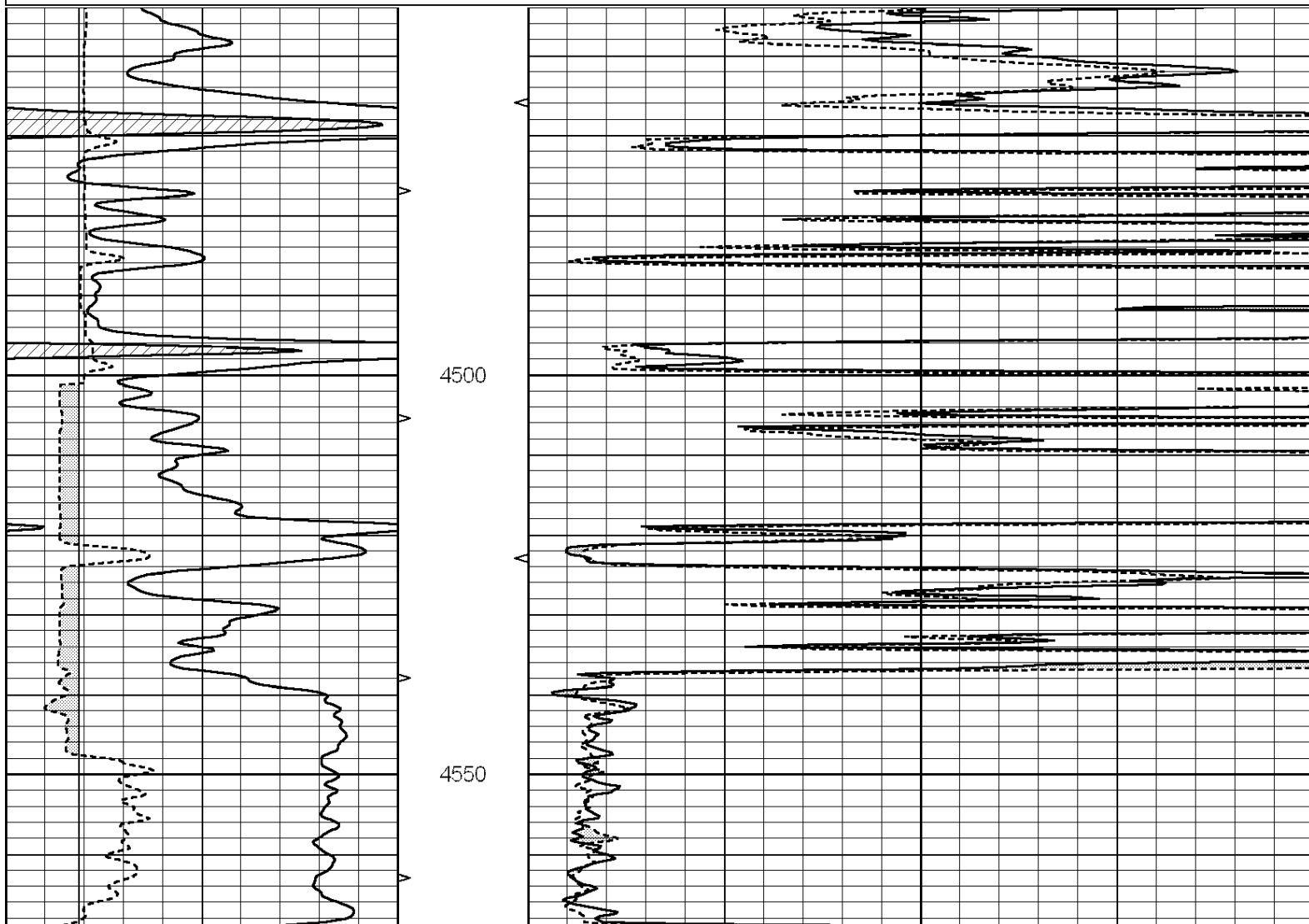
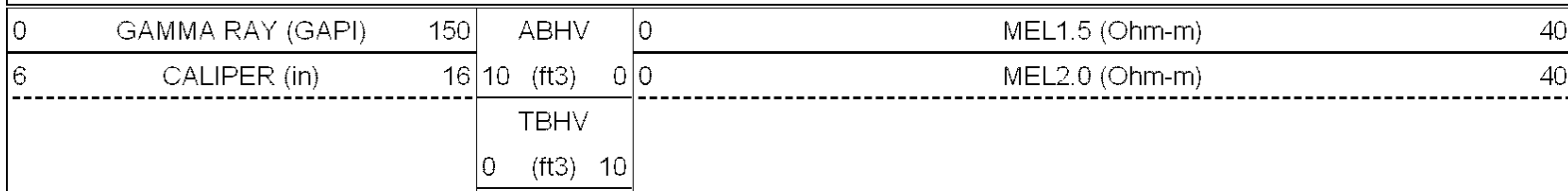


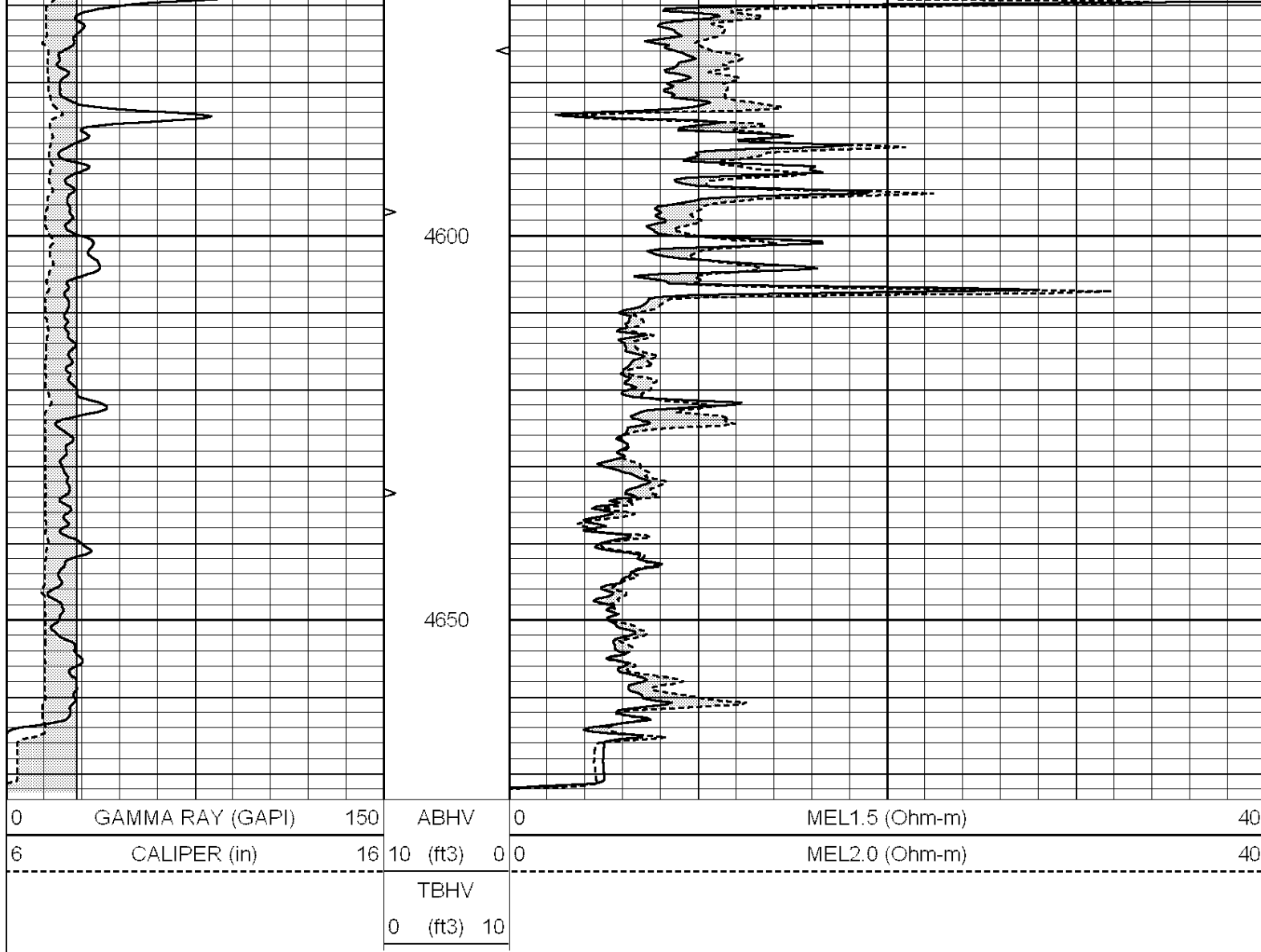


SUPERIOR
Hays,
Kansas

REPEAT SECTION

Database File: 004946pe.db
 Dataset Pathname: pass6.1
 Presentation Format: _micro
 Dataset Creation: Mon Aug 16 13:16:03 2010 by Calc Open-Cased 090629
 Charted by: Depth in Feet scaled 1:240





Calibration Report

Database File: 004946pe.db
 Dataset Pathname: pass7.1
 Dataset Creation: Mon Aug 16 13:35:40 2010 by Calc Open-Cased 090629

MICRO Calibration Report

Serial Number:	MICRO6	
Tool Model:	PROBE	
Performed:	Tue May 11 20:30:32 2010	
Caliper Calibration:	Gain=5.039	Offset=1.609
References	Low Cal	High Cal
Readings	8.000	14.000
	1.401	2.546
1.5" Calibration:	Gain=60.781	Offset=-1.651
References	Low Cal	High Cal
Readings	0.000	20.000
	0.008	1.200
2" Calibration:	Gain=75.739	Offset=-2.193
References	Low Cal	High Cal
Readings	0.000	20.000
	0.008	0.888

Gamma Ray Calibration Report

Serial Number:	GR6	
Tool Model:	OPEN	
Performed:	Wed Jul 14 14:14:30 2010	
Calibrator Value:	150.0	GAPI
Background Reading:	0.0	cps
Calibrator Reading:	276.0	cps
Sensitivity:	0.5335	GAPI/cps