



Dual Compensated
Porosity Log

DIGITAL LOG (785) 625-3858

API No.	15-109-20913-00-00		
Company	LB Exploration, Inc.		
Well	Munk No. 1		
Field	Wildcat		
County	Logan		State Kansas
Location	SW - NE - SW - SW 730' FSL & 810' FWL		
Sec: 27	Twp: 12 S	Rge: 32 W	
Permanent Datum	Ground Level	Elevation 2994	
Log Measured From	Kelly Bushing	12 Ft. Above Perm. Datum	
Drilling Measured From	Kelly Bushing	K.B. 3006 D.F. 2994 G.L.	
Other Services	DILMEL BHCS		

Date	5/22/2010		
Run Number	One		
Type Log	CNL / CDL		
Depth Driller	4750		
Depth Logger	4750		
Bottom Logged Interval	4730		
Top Logged Interval	3600		
Type Fluid In Hole	Chemical		
Salinity, PPM CL	1,200		
Density	9.5		
Level	Full		
Max. Rec. Temp. F	124		
Operating Rig Time	6 Hours		
Equipment -- Location	15 Hays		
Recorded By	B. Becker		
Witnessed By	Scott Alberg		

Borehole Record				Casing Record			
Run No	Bit	From	To	Size	Wgt.	From	To
One	12.25	0	223	8.625	24#	0	223
Two	7.875	223	TD				

<<< Fold Here >>>

All interpretations are opinions based on inferences from electrical or other measurements and we cannot and do not guarantee the accuracy or correctness of any interpretation, and we shall not, except in the case of gross or willful negligence on our part, be liable or responsible for any loss, costs, damages, or expenses incurred or sustained by anyone resulting from any interpretation made by any of our officers, agents or employees. These interpretations are also subject to our general terms and conditions set out in our current Price Schedule.

Comments

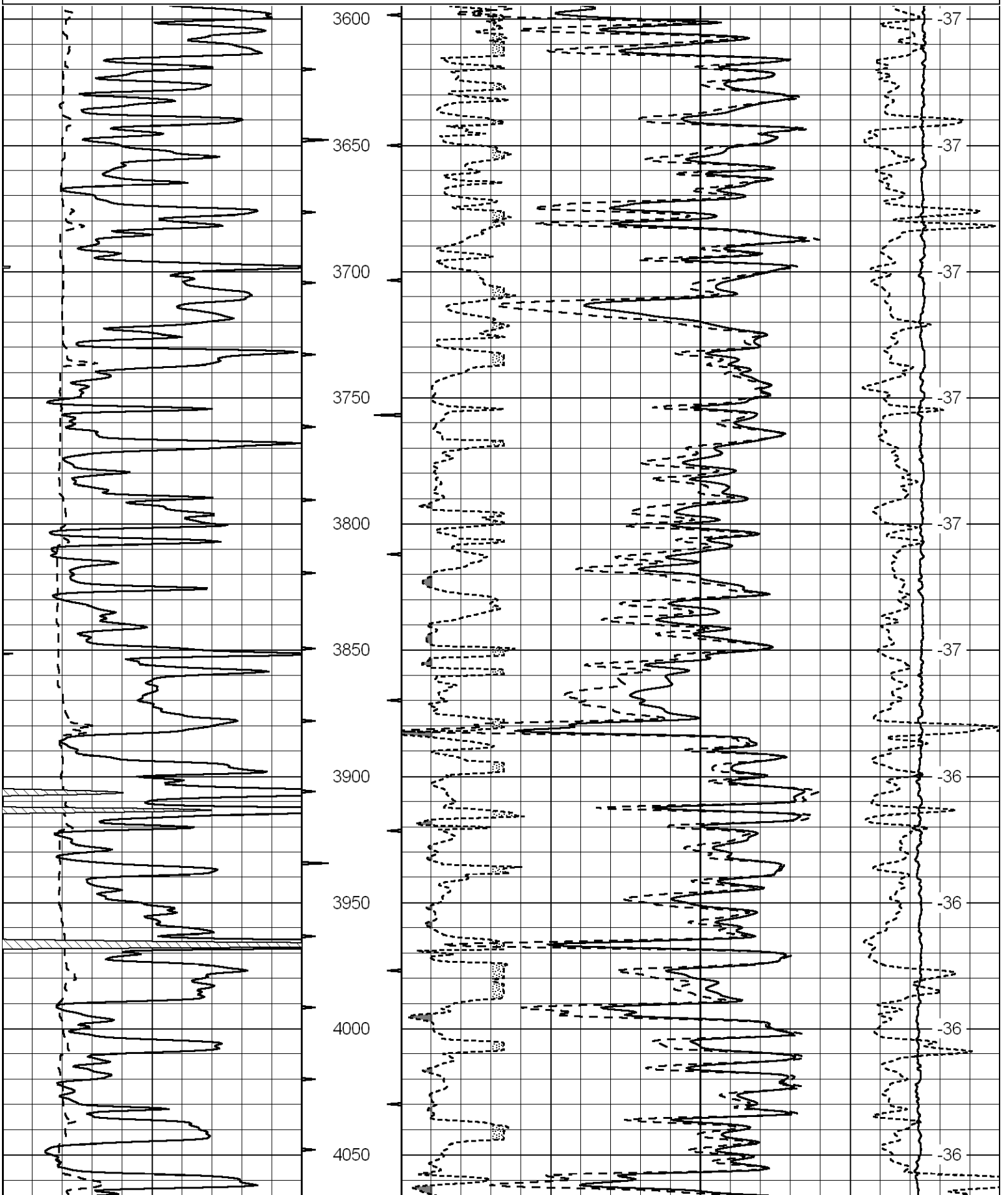
Thank you for using Log-Tech, Inc.
(785) 625-3858
Oakley, Ks;
9 South to Ute Rd;
1 West; 1/2 South;
East Into

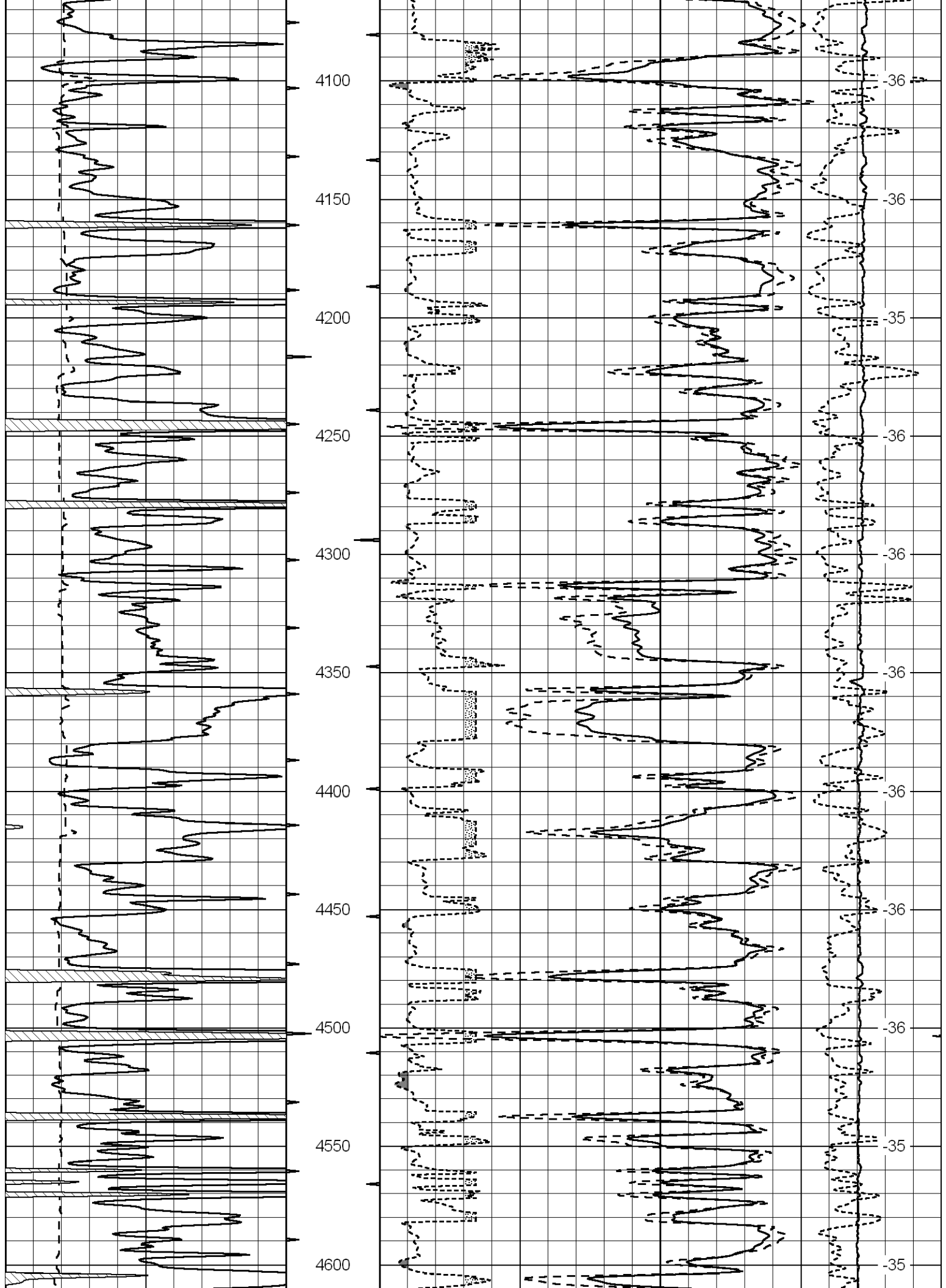
Database File: lbhd.db
 Dataset Pathname: DIL/lb_stk
 Presentation Format: cdl
 Dataset Creation: Sat May 22 08:19:47 2010
 Charted by: Depth in Feet scaled 1:600

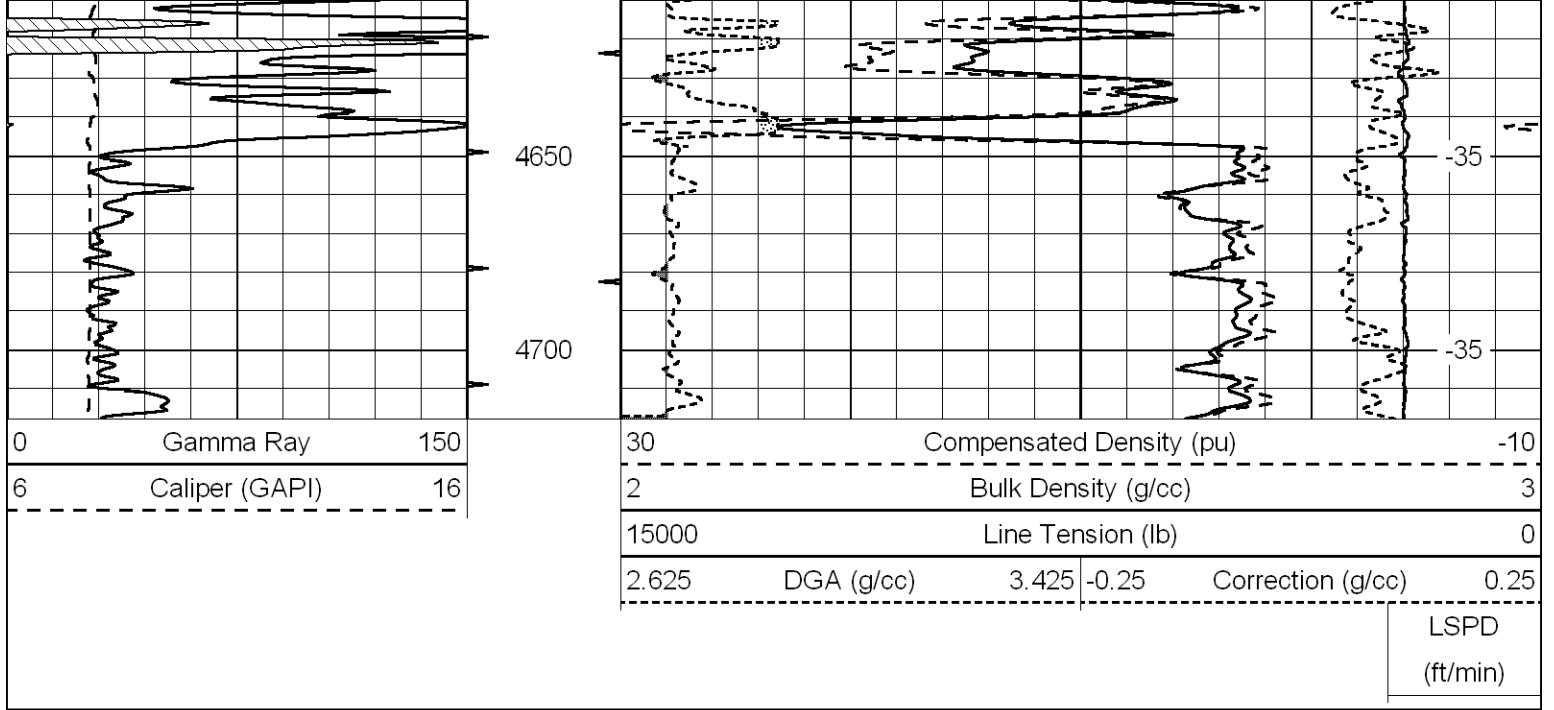
0	Gamma Ray	150
6	Caliper (GAPI)	16

30	Compensated Density (pu)			-10	
2	Bulk Density (g/cc)			3	
15000	Line Tension (lb)			0	
2.625	DGA (g/cc)	3.425	-0.25	Correction (g/cc)	0.25

LSPD
(ft/min)







Database File: lbhd.db
 Dataset Pathname: DIL/lb_stk
 Presentation Format: cndlspec
 Dataset Creation: Sat May 22 08:19:47 2010
 Charted by: Depth in Feet scaled 1:240

