



Dual Induction Log

DIGITAL LOG (785) 625-3858

API No.	15-109-20913-00-00	
Company	LB Exploration, Inc.	
Well	Munk No. 1	
Field	Wildcat	
County	Logan	State
		Kansas
Location	SW - NE - SW - SW 730' FSL & 810' FWL	
Sec: 27	Twp: 12 S	Rge: 32 W
Permanent Datum	Ground Level	Elevation 2994
Log Measured From	Kelly Bushing	12 Ft. Above Perm. Datum
Drilling Measured From	Kelly Bushing	
		Other Services CNL/CDL MEL/BHCS
		Elevation K.B. 3006 D.F. 2994 G.L. 2994

Date	5/22/2010
Run Number	One
Depth Driller	4750
Depth Logger	4750
Bottom Logged Interval	4749
Top Log Interval	200
Casing Driller	8.625 @ 223
Casing Logger	212
Bit Size	7.875
Type Fluid in Hole	Chemical
Salinity, ppm CL	1,200
Density / Viscosity	9.5 52
pH / Fluid Loss	10.0 8.0
Source of Sample	Flowline
Rm @ Meas. Temp	2.20 @ 60
Rmf @ Meas. Temp	1.65 @ 60
Rmc @ Meas. Temp	2.97 @ 60
Source of Rmf / Rmc	Charts
Rm @ BHT	1.07 @ 124
Operating Rig Time	6 Hours
Max Rec. Temp. F	124
Equipment Number	15
Location	Hays
Recorded By	B. Becker
Witnessed By	Scott Alberg

<<< Fold Here >>>

All interpretations are opinions based on inferences from electrical or other measurements and we cannot and do not guarantee the accuracy or correctness of any interpretation, and we shall not, except in the case of gross or willful negligence on our part, be liable or responsible for any loss, costs, damages, or expenses incurred or sustained by anyone resulting from any interpretation made by any of our officers, agents or employees. These interpretations are also subject to our general terms and conditions set out in our current Price Schedule.

Comments

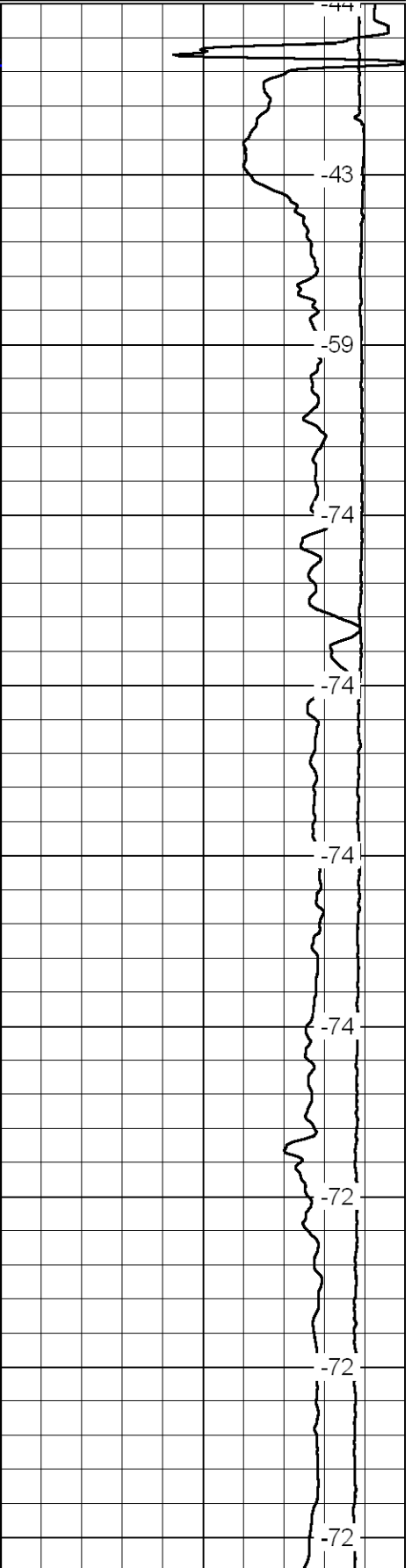
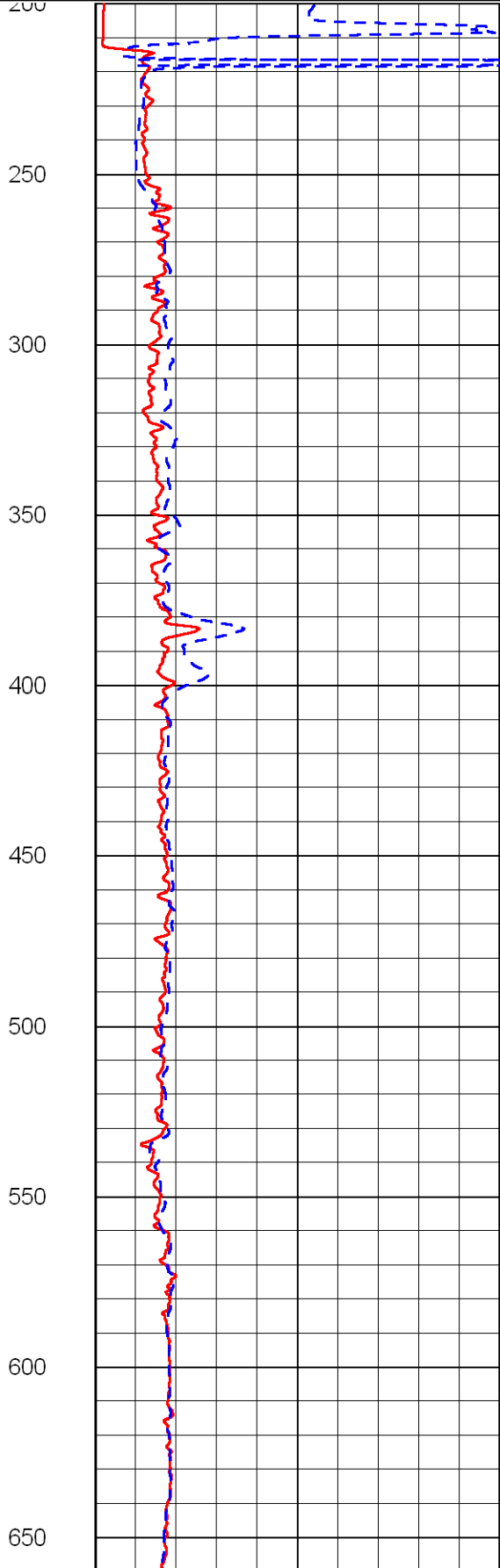
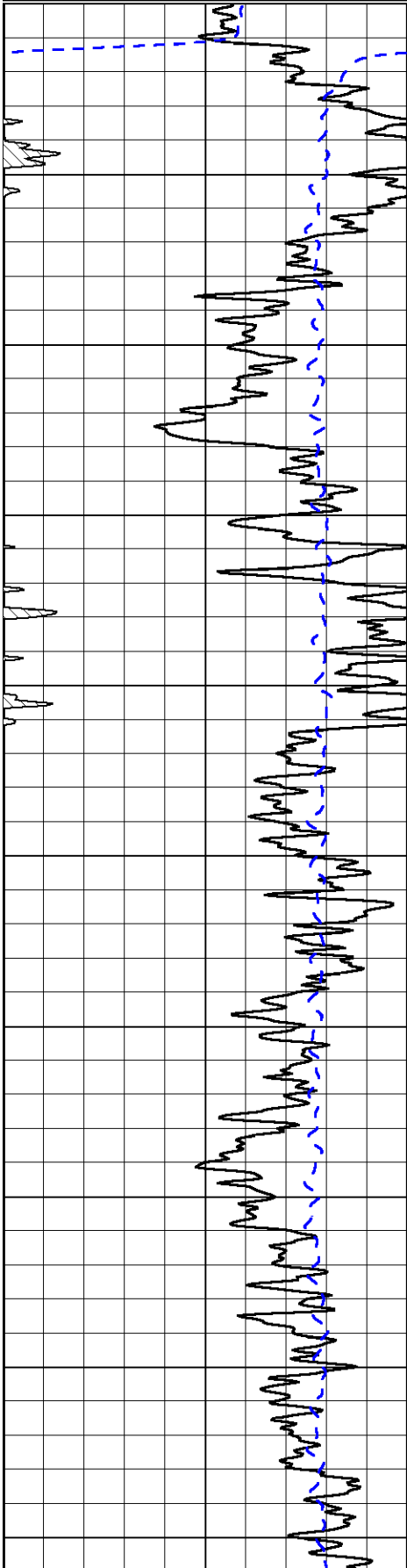
Thank you for using Log-Tech, Inc.
 (785) 625-3858
 Oakley, Ks;
 9 South to Ute Rd;
 1 West; 1/2 South;
 East Into

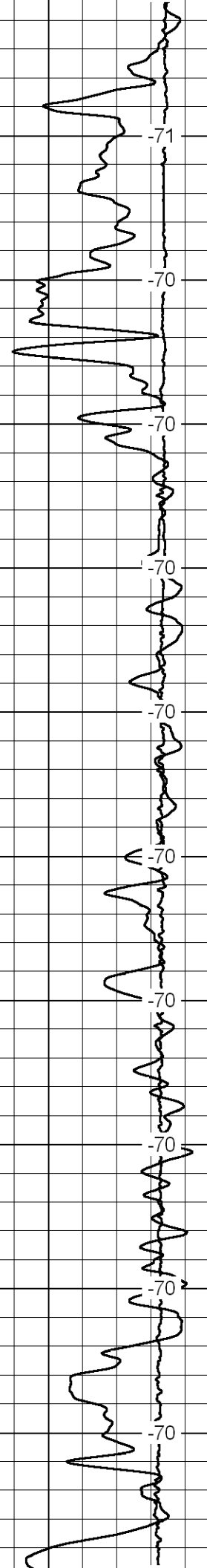
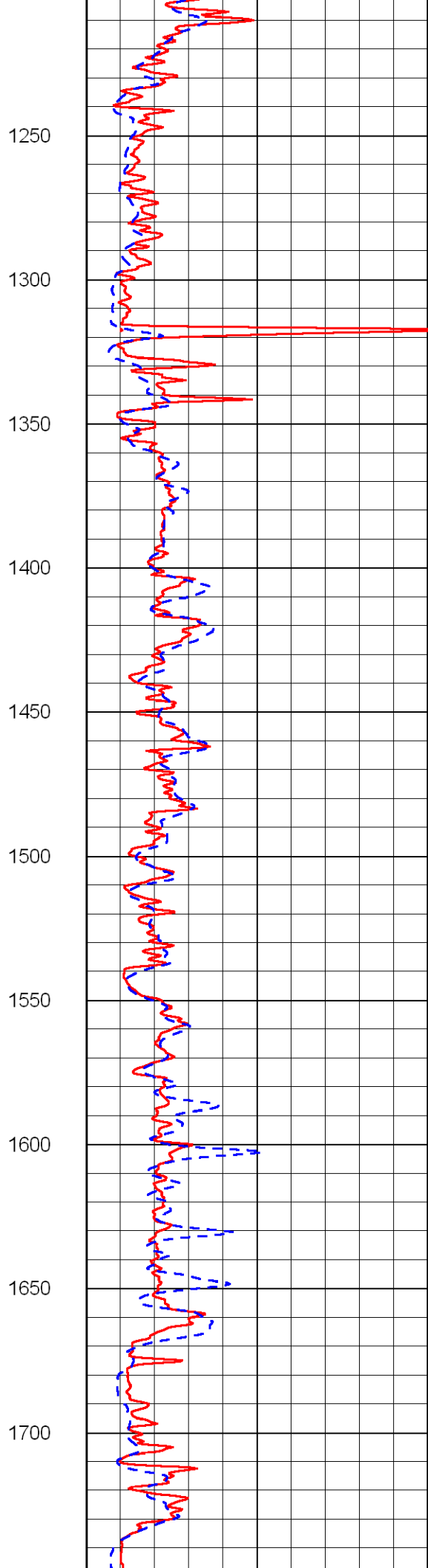
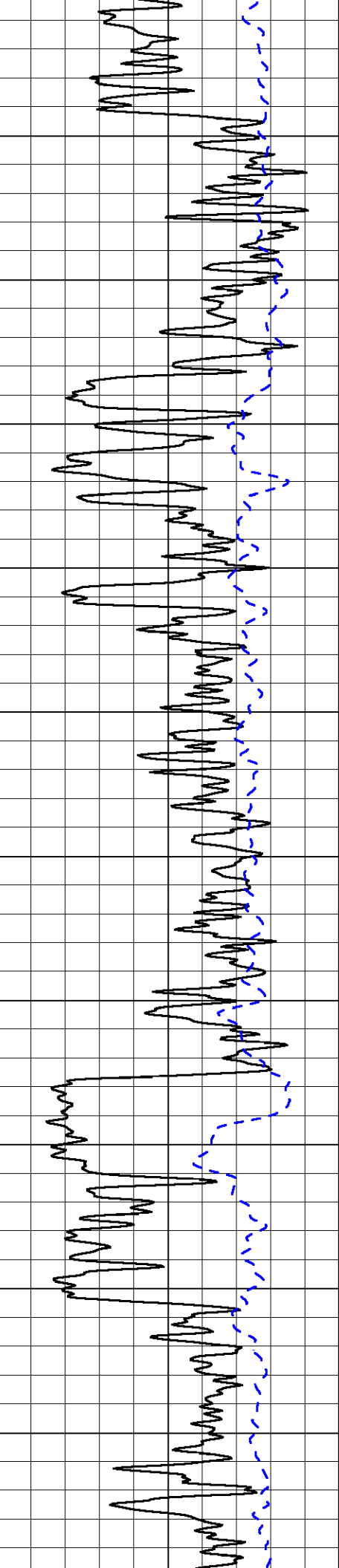
Database File: lbhd.db
 Dataset Pathname: DIL/lb_stk
 Presentation Format: dil2in
 Dataset Creation: Sat May 22 08:19:47 2010
 Charted by: Depth in Feet scaled 1:600

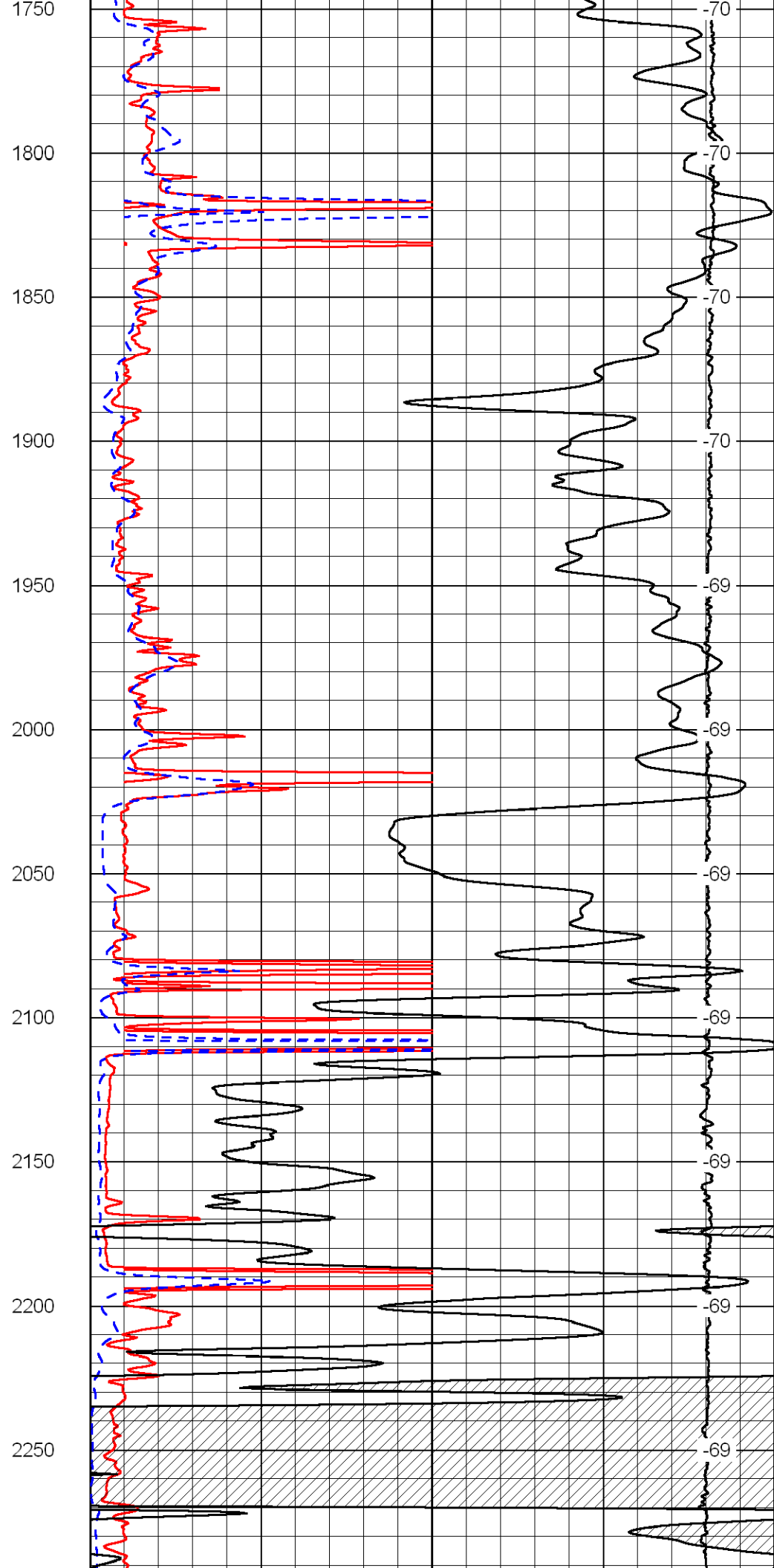
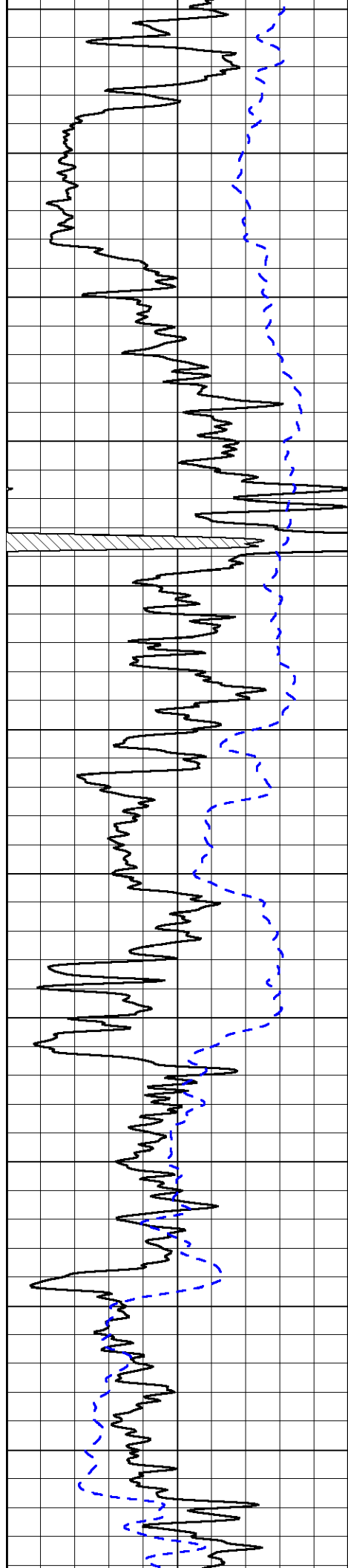
0 Gamma Ray 150
-200 SP (mV) 0

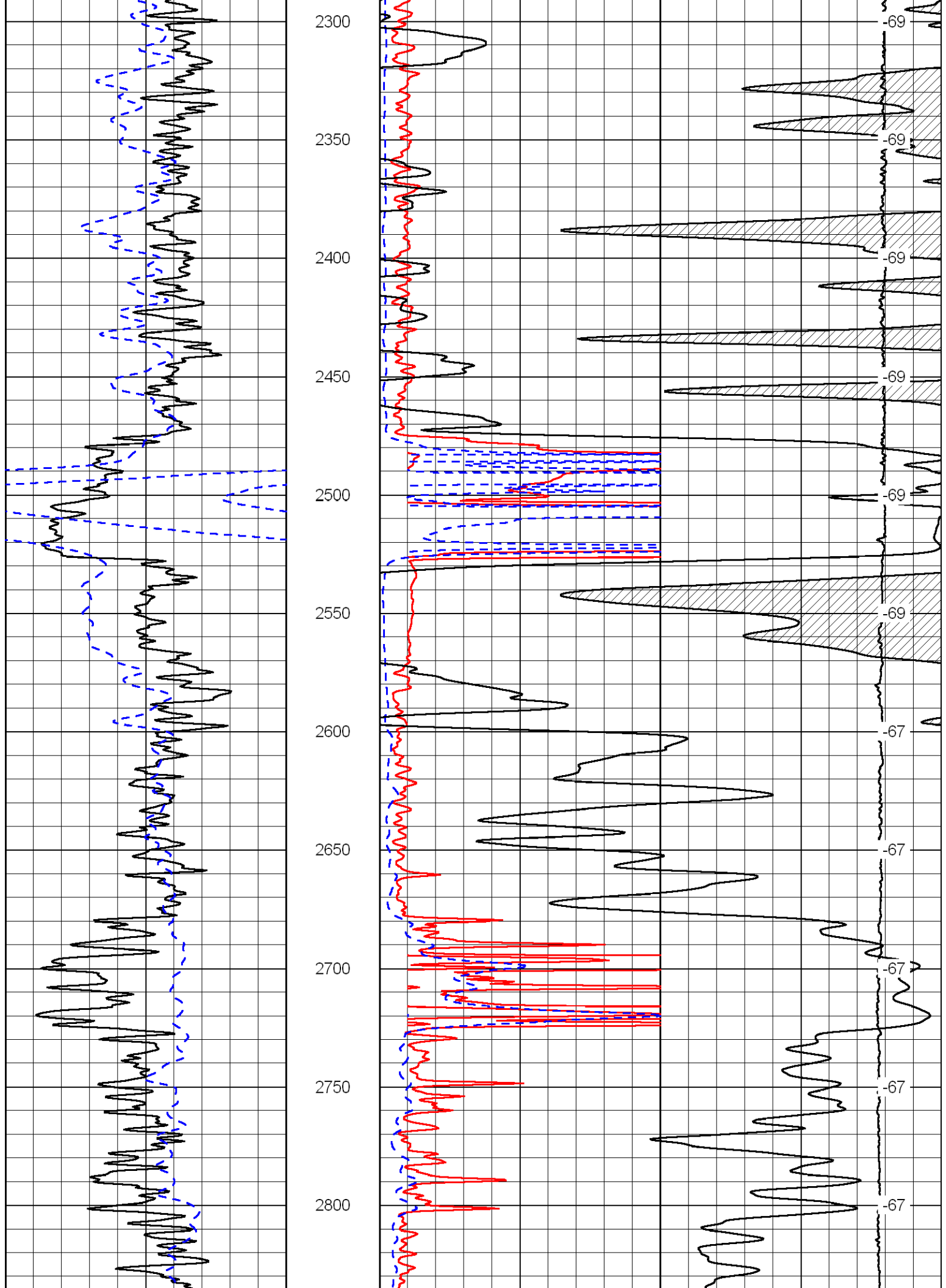
0 Shallow Resistivity (Ohm-m) 50
0 Deep Resistivity (Ohm-m) 50
1000 Conductivity (mmho/m) 0
15000 Line Tension (lb) 0
50 Shallow Resistivity (Ohm-m) 500
50 Deep Resistivity (Ohm-m) 500

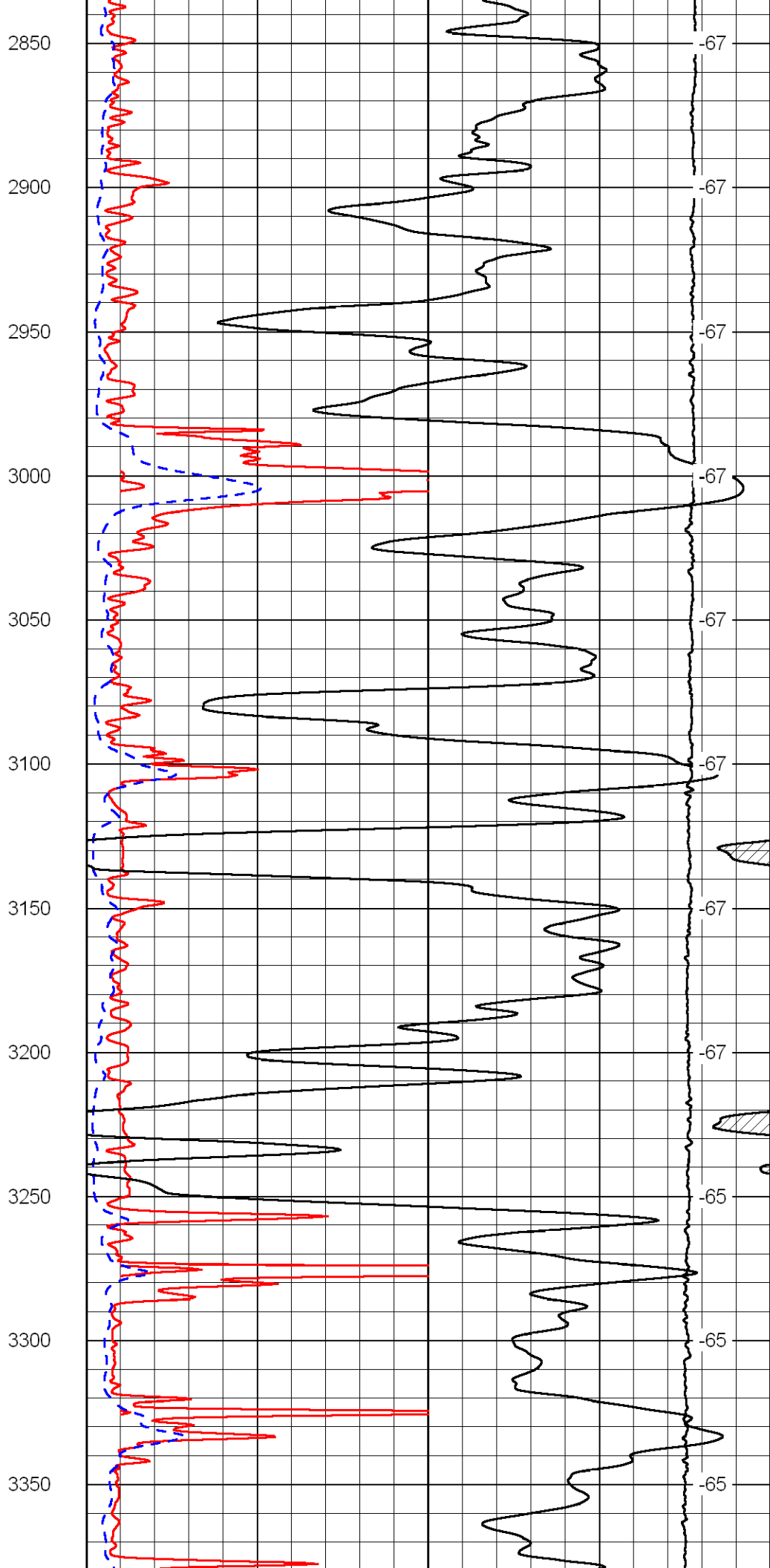
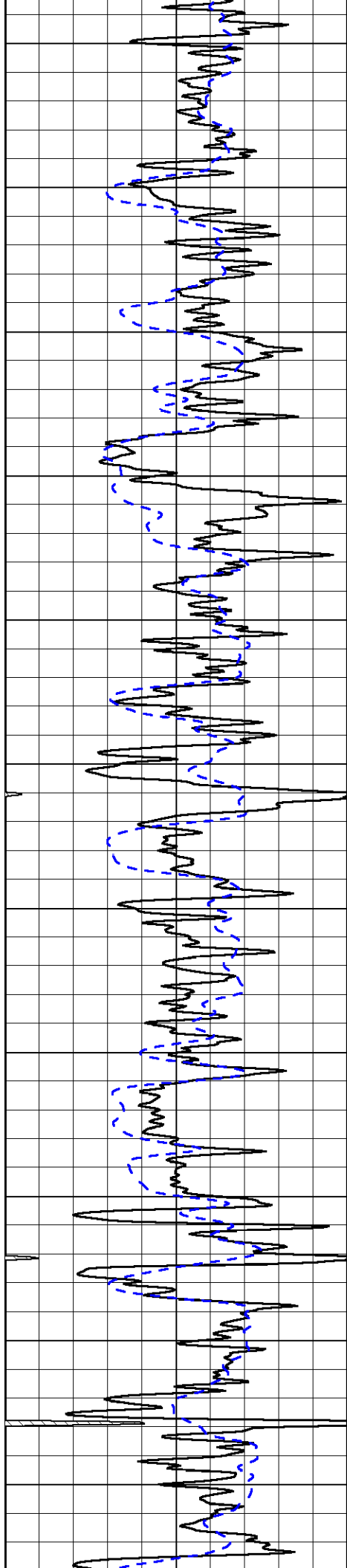
LSPD
(ft/min)

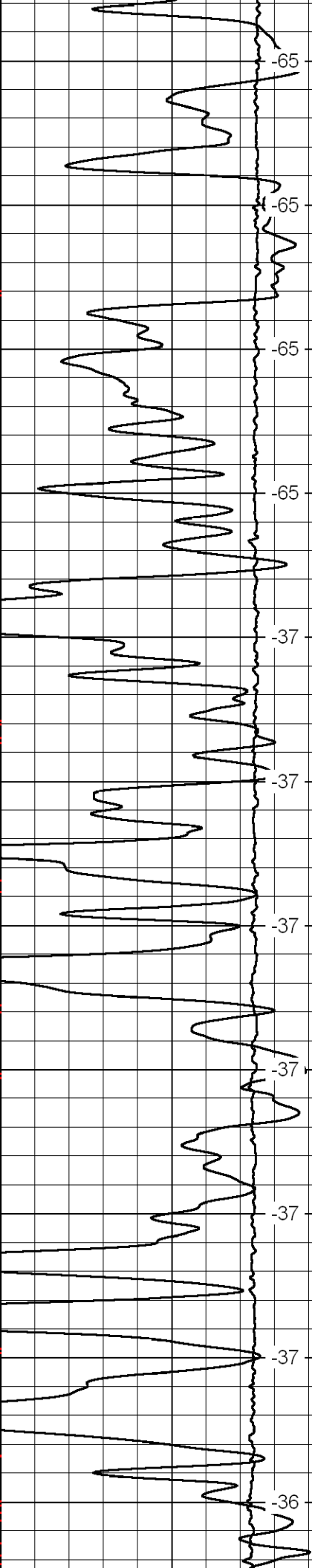
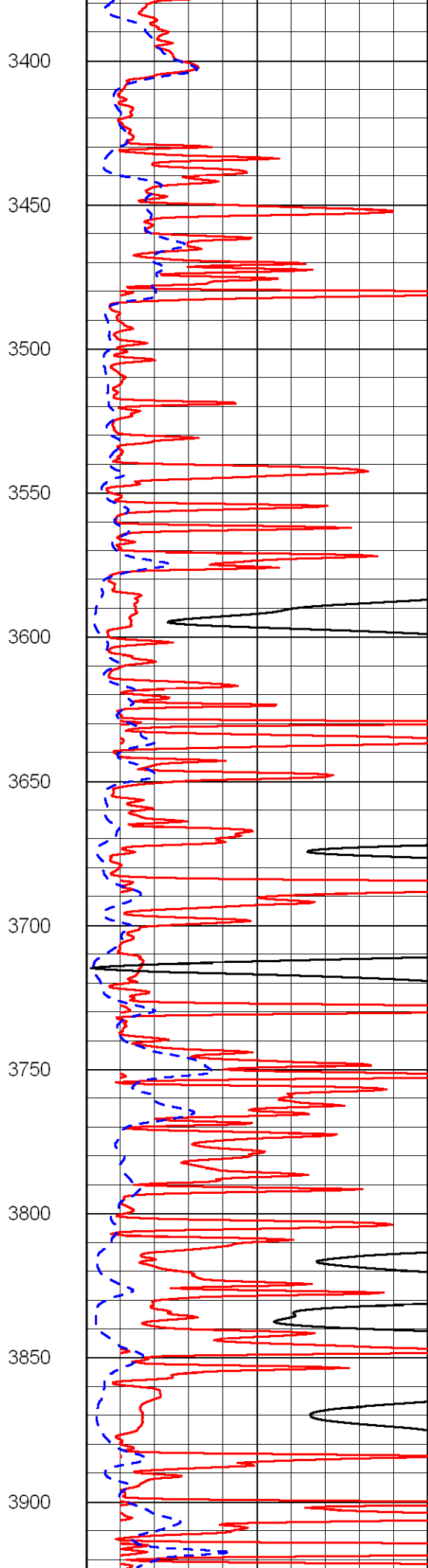
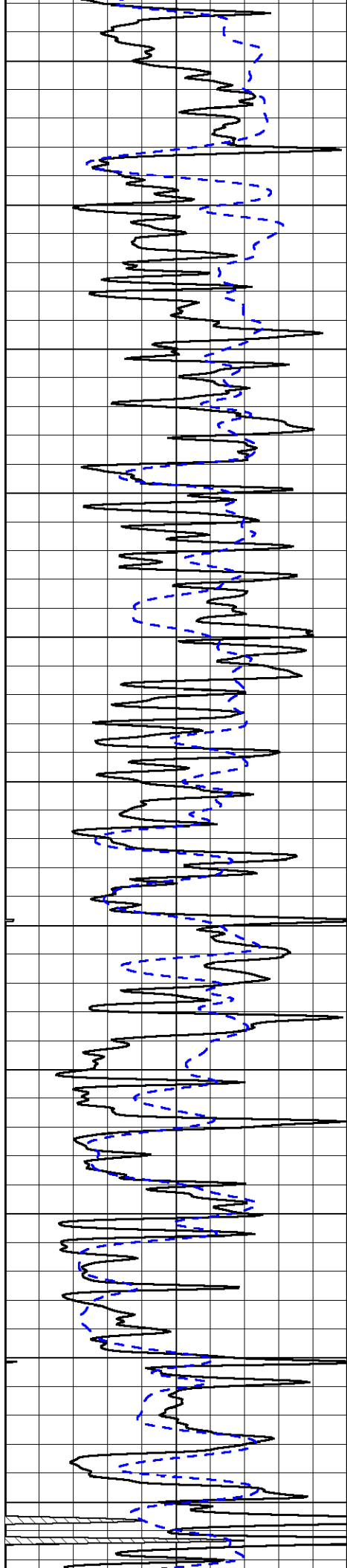


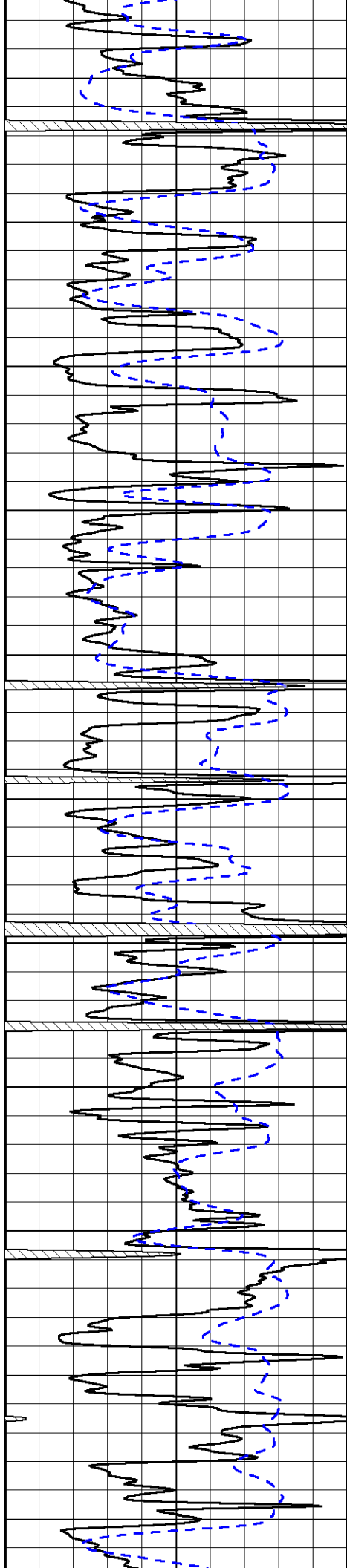












3950

4000

4050

4100

4150

4200

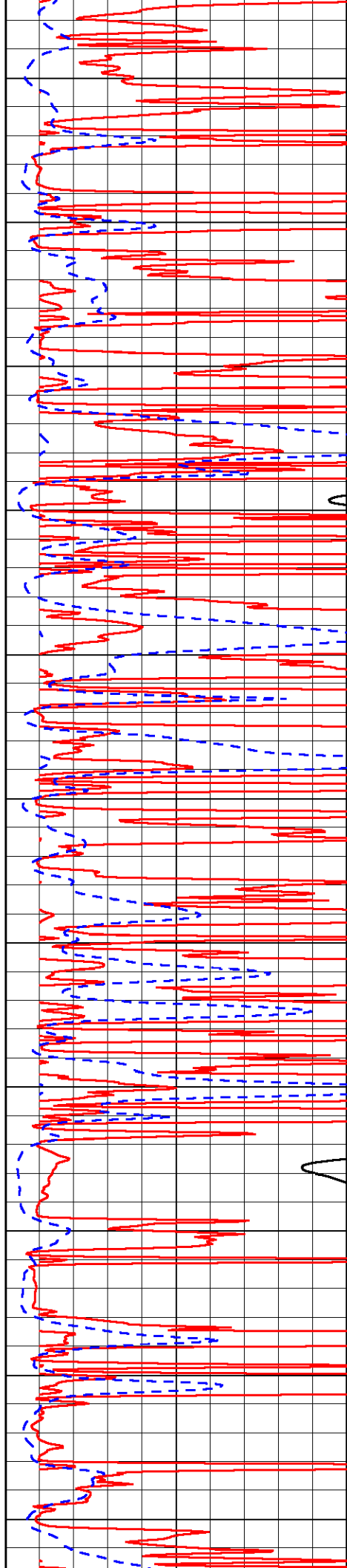
4250

4300

4350

4400

4450



-36

-36

-36

-36

-36

-35

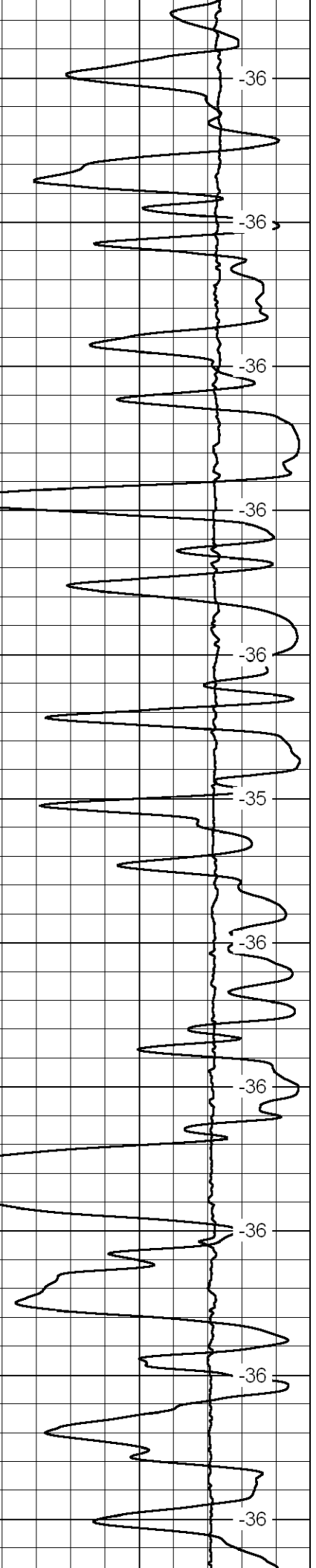
-36

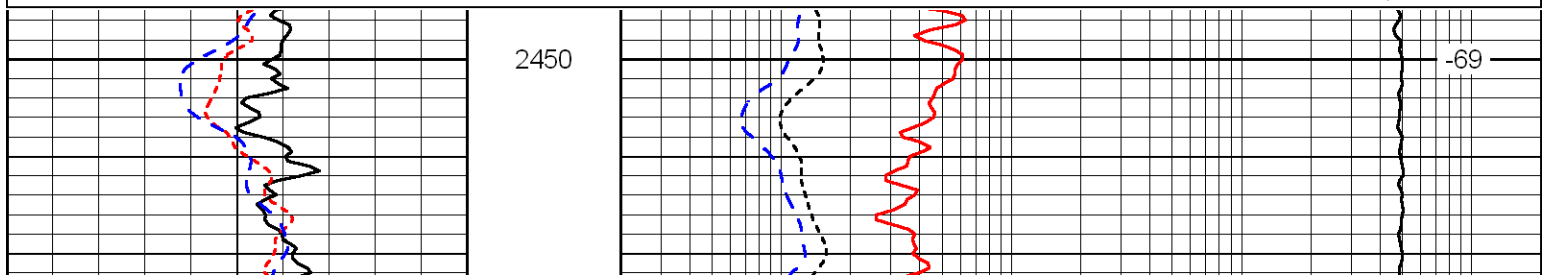
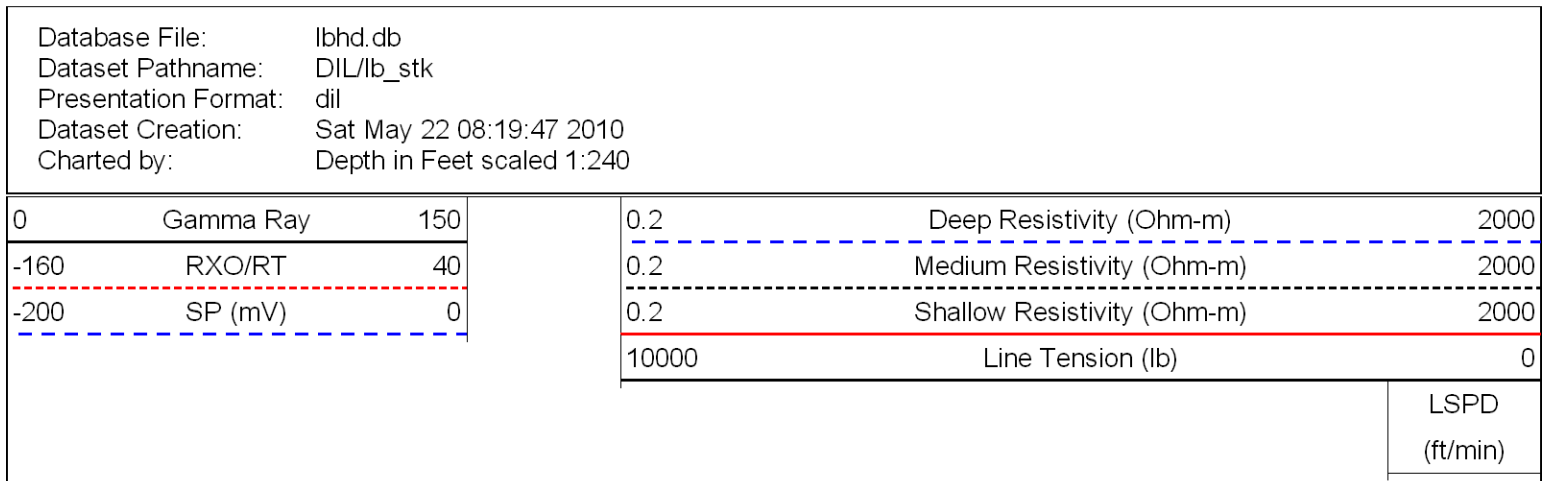
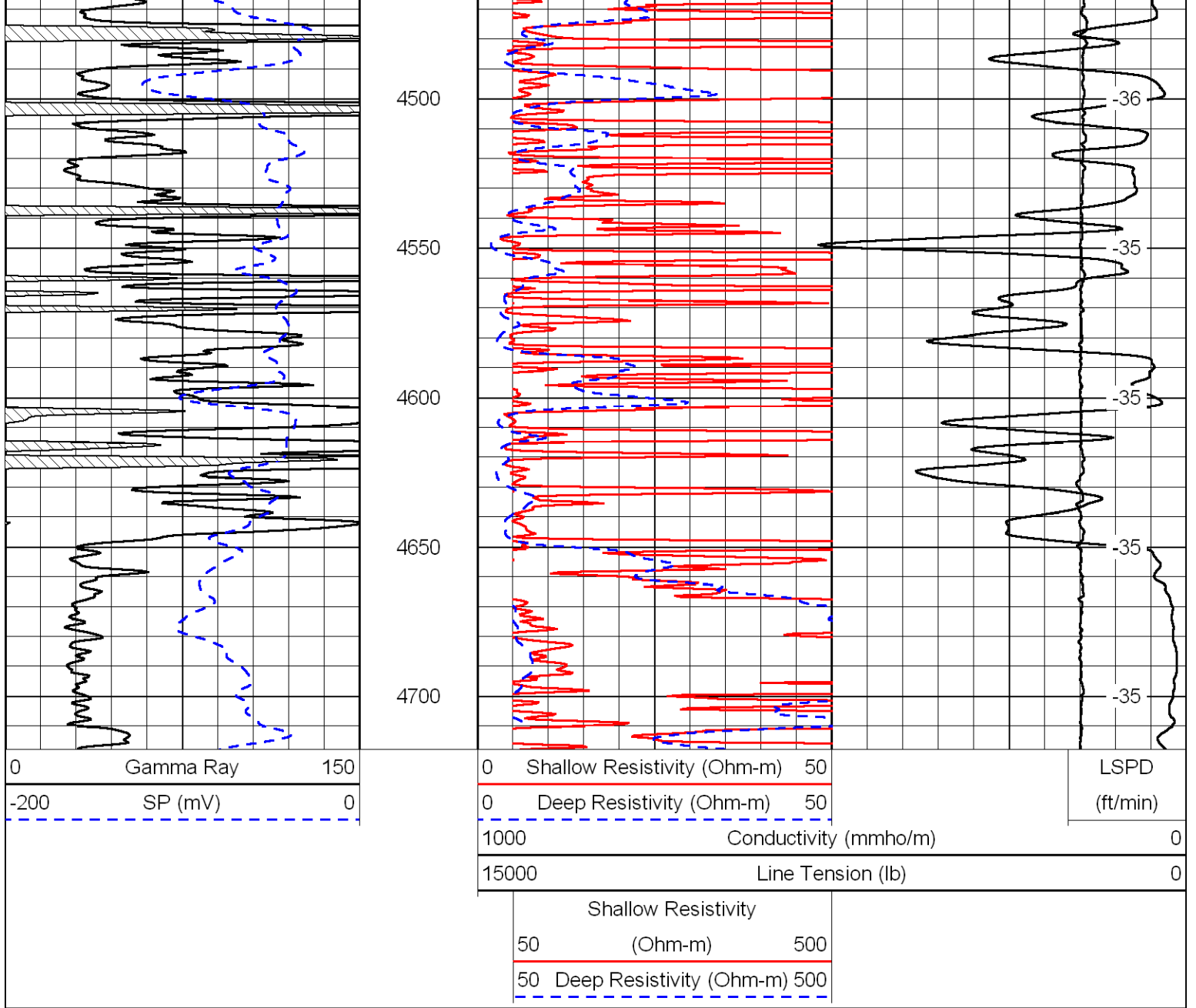
-36

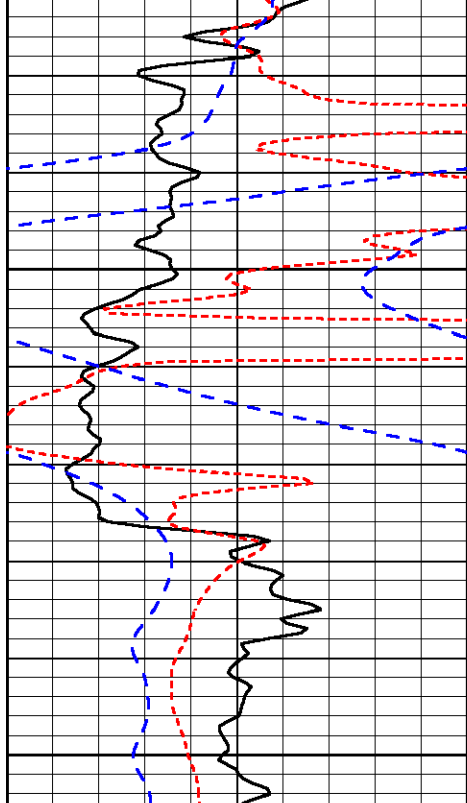
-36

-36

-36



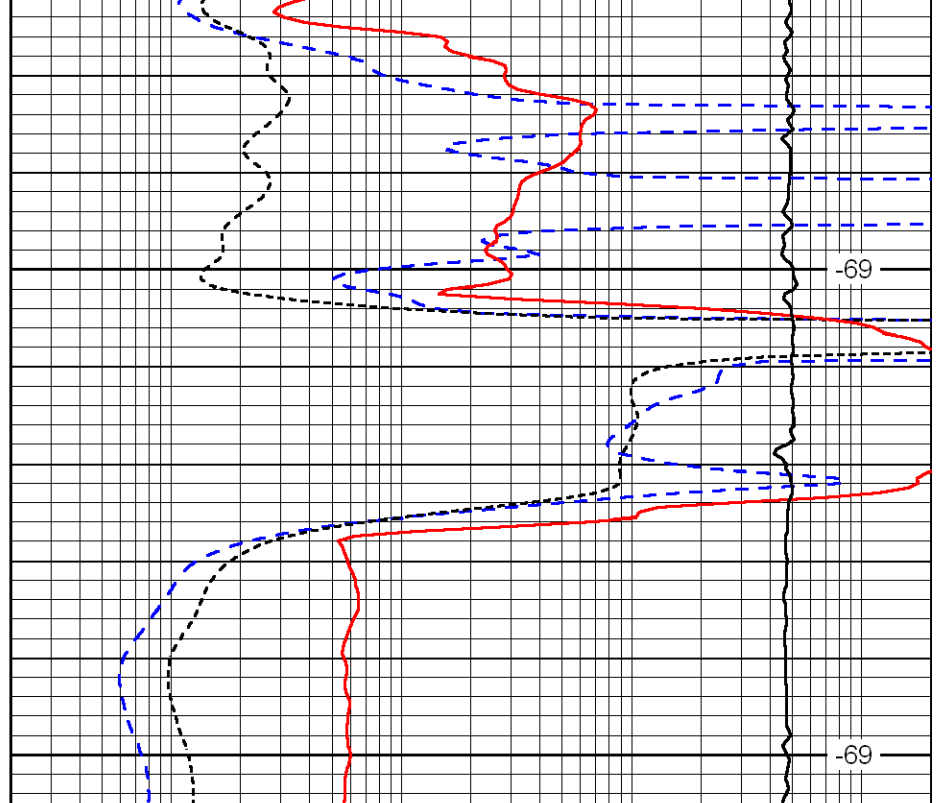




2500

2550

0	Gamma Ray	150
-160	RXO/RT	40
-200	SP (mV)	0



-69

-69

0.2	Deep Resistivity (Ohm-m)	2000
0.2	Medium Resistivity (Ohm-m)	2000
0.2	Shallow Resistivity (Ohm-m)	2000
10000	Line Tension (lb)	0

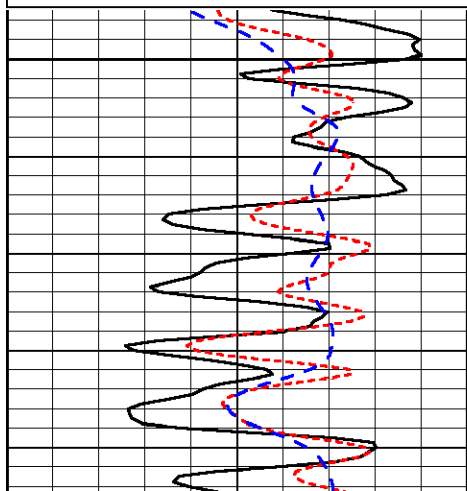
LSPD
(ft/min)

Database File: lbhd.db
 Dataset Pathname: DIL/lb_stk
 Presentation Format: dil
 Dataset Creation: Sat May 22 08:19:47 2010
 Charted by: Depth in Feet scaled 1:240

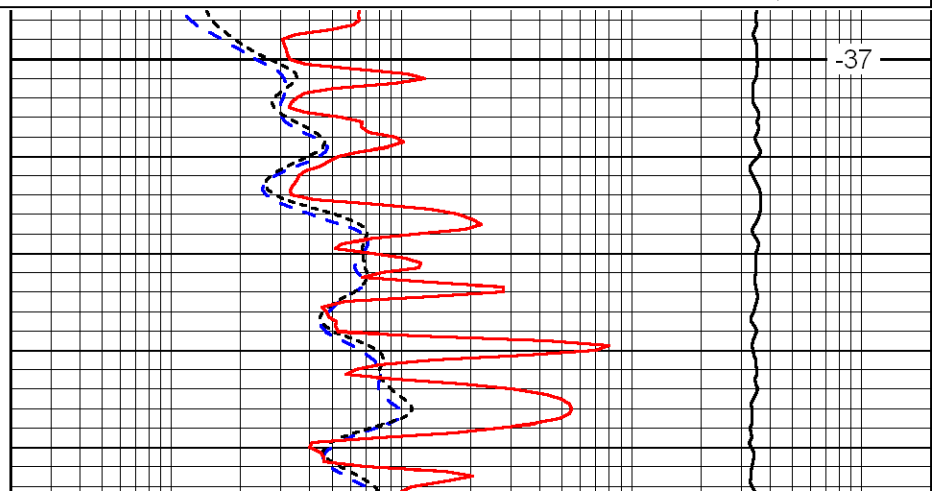
0	Gamma Ray	150
-160	RXO/RT	40
-200	SP (mV)	0

0.2	Deep Resistivity (Ohm-m)	2000
0.2	Medium Resistivity (Ohm-m)	2000
0.2	Shallow Resistivity (Ohm-m)	2000
10000	Line Tension (lb)	0

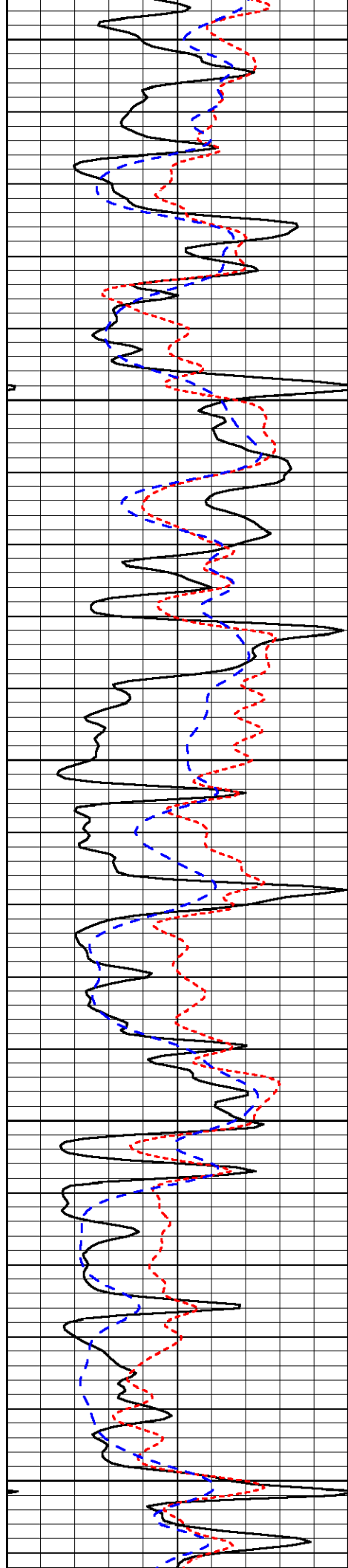
LSPD
(ft/min)



3600



-37



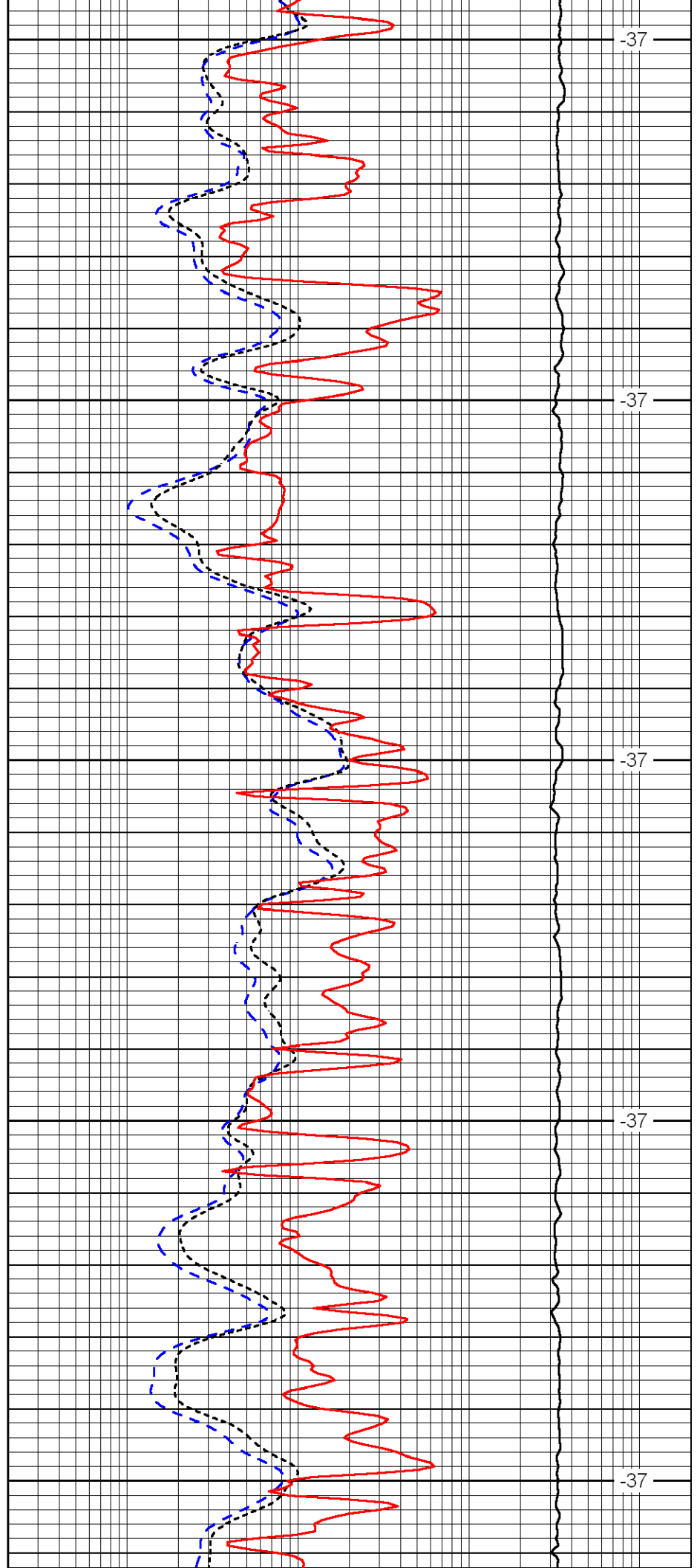
3650

3700

3750

3800

3850



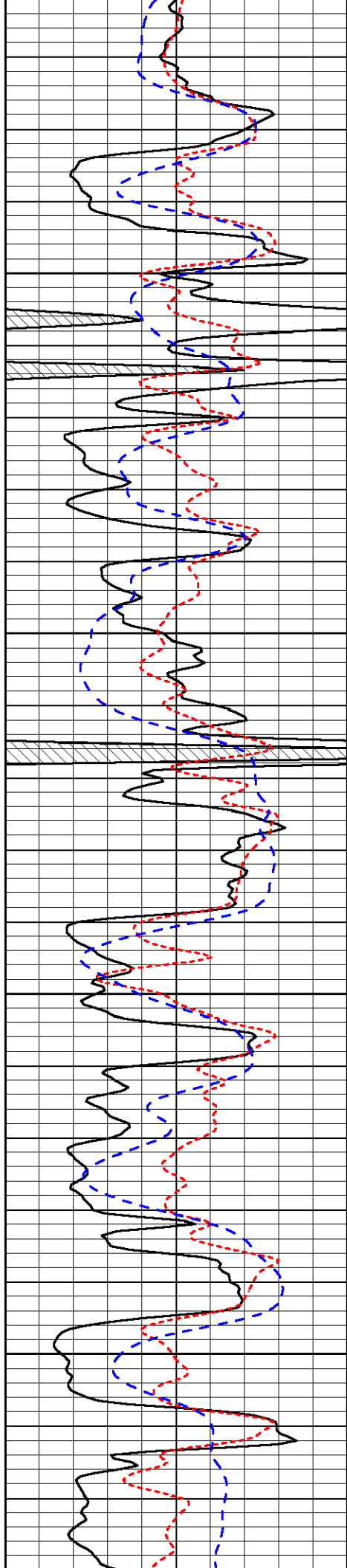
-37

-37

-37

-37

-37

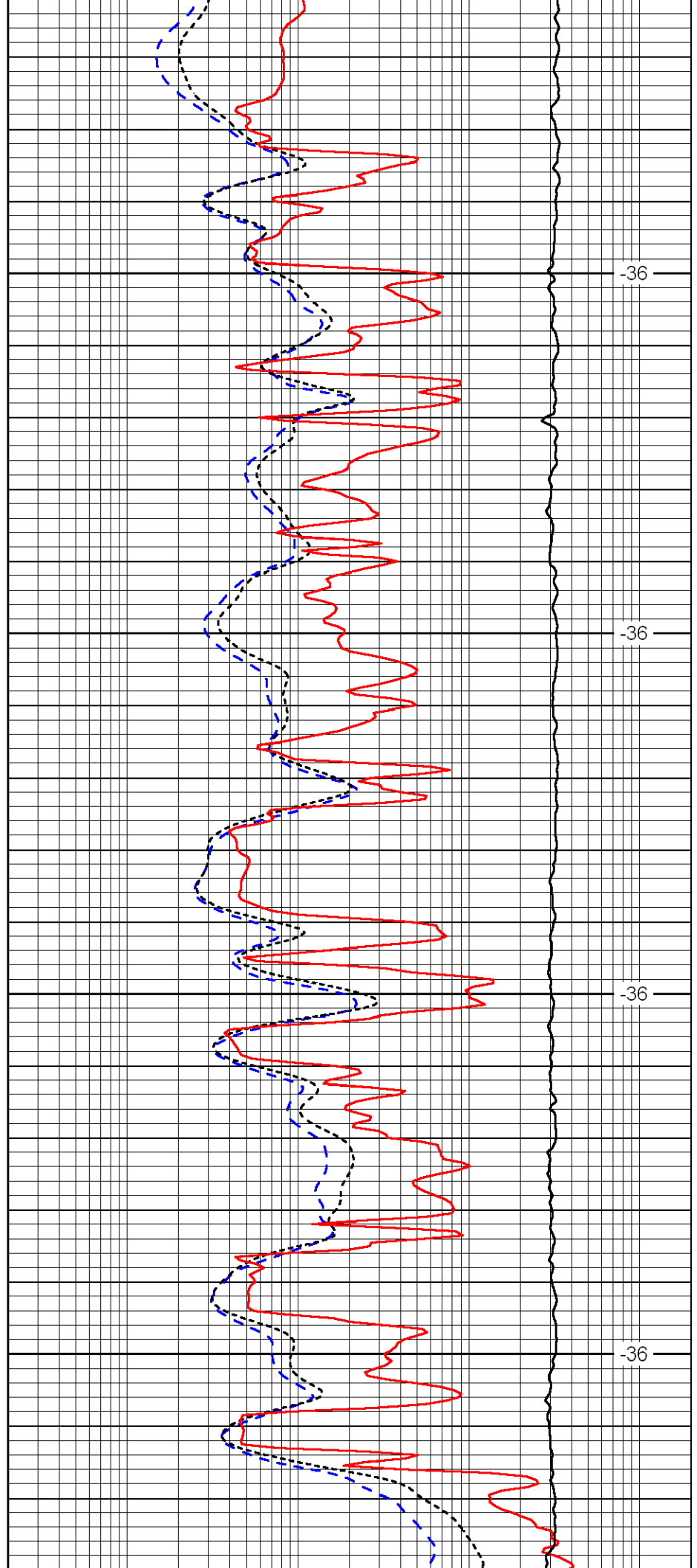


3900

3950

4000

4050

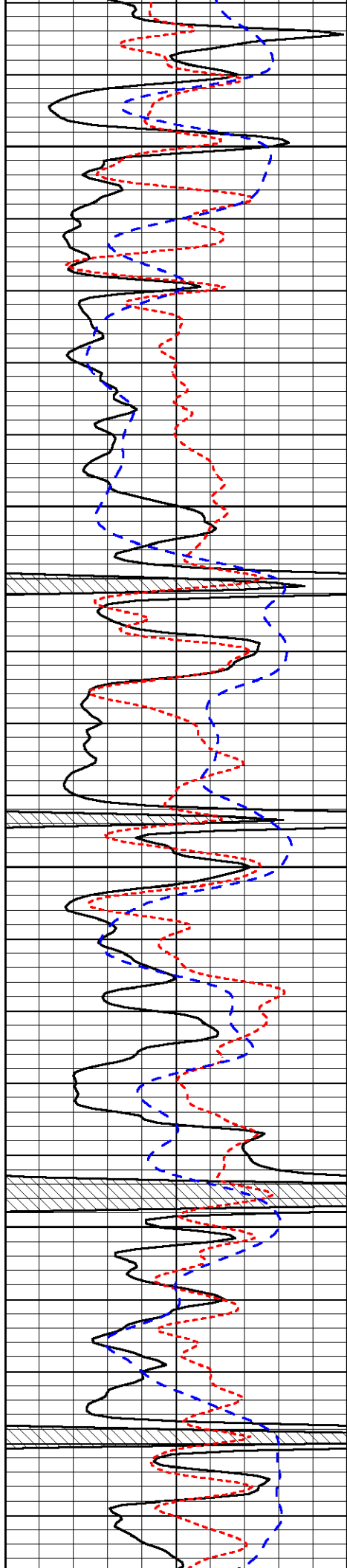


-36

-36

-36

-36

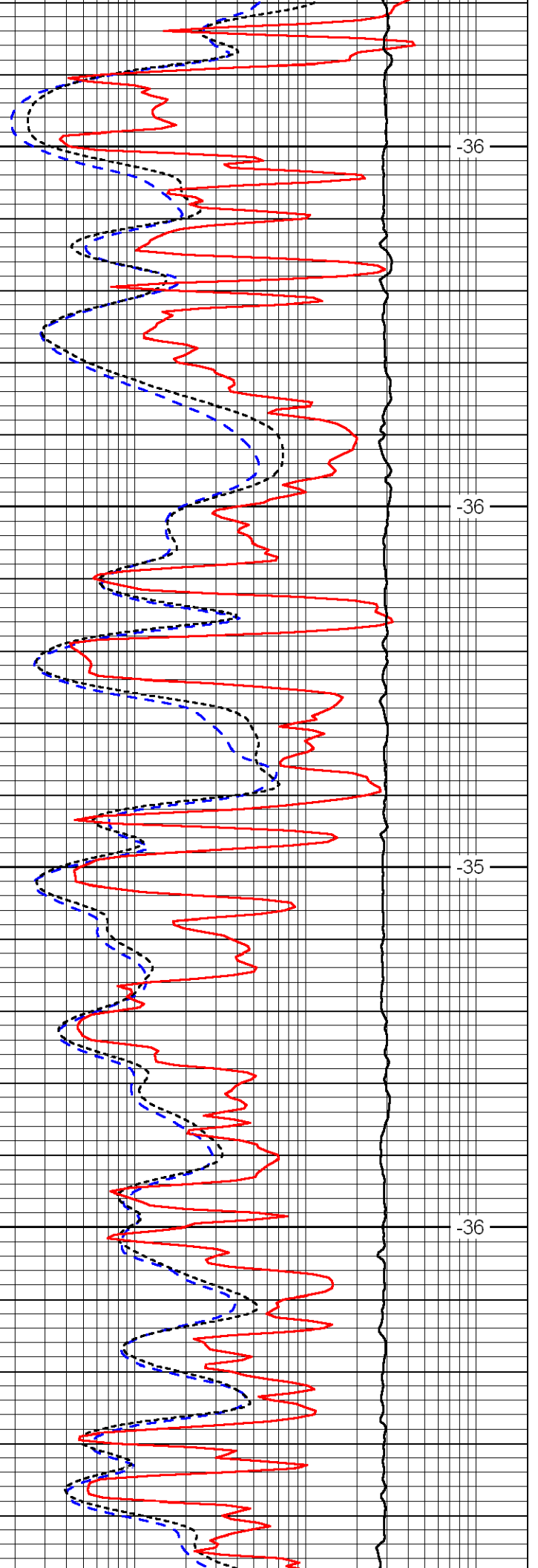


4100

4150

4200

4250

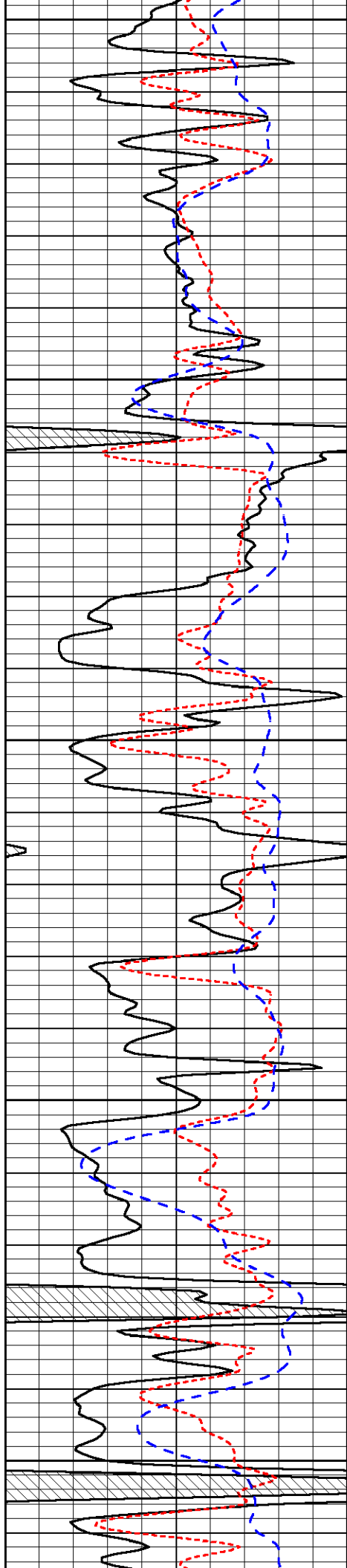


-36

-36

-35

-36



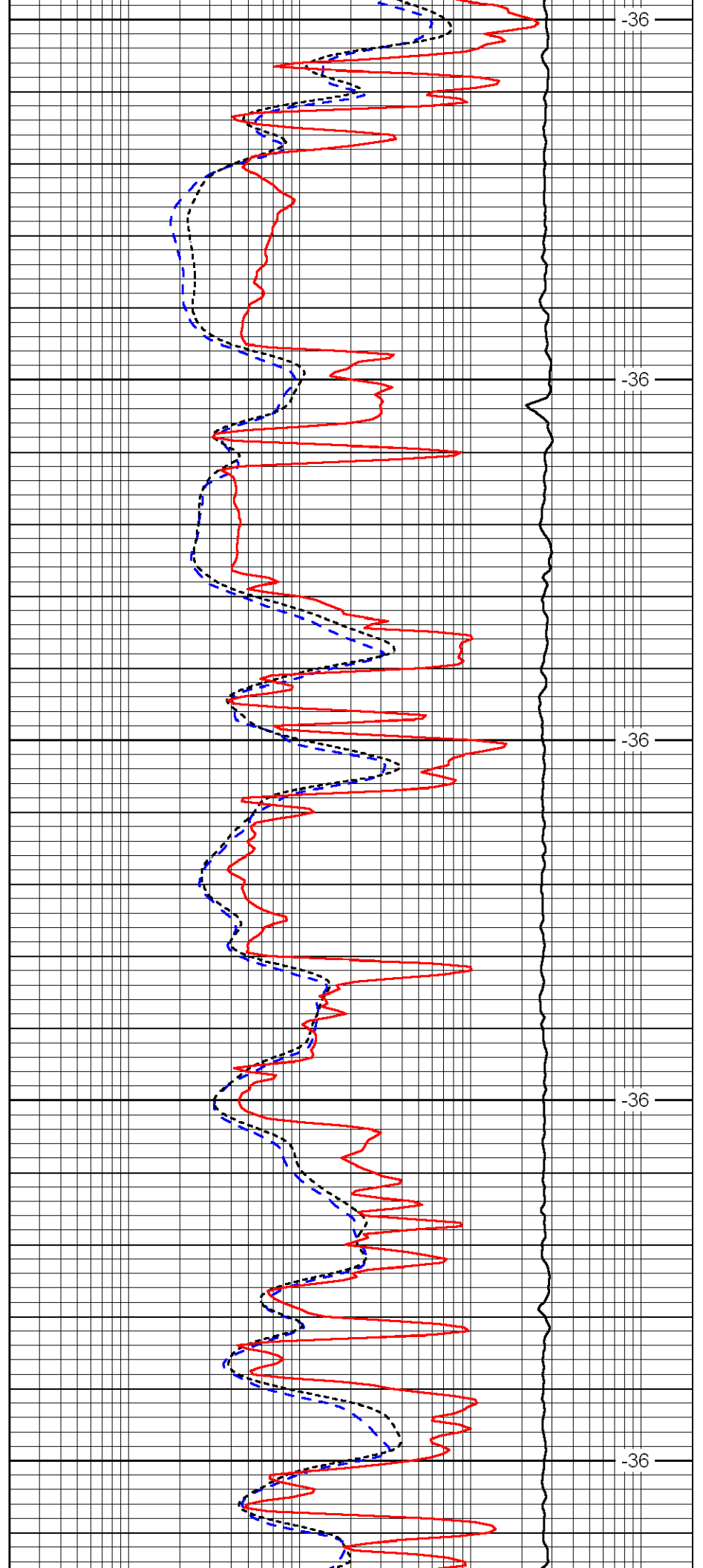
4300

4350

4400

4450

4500



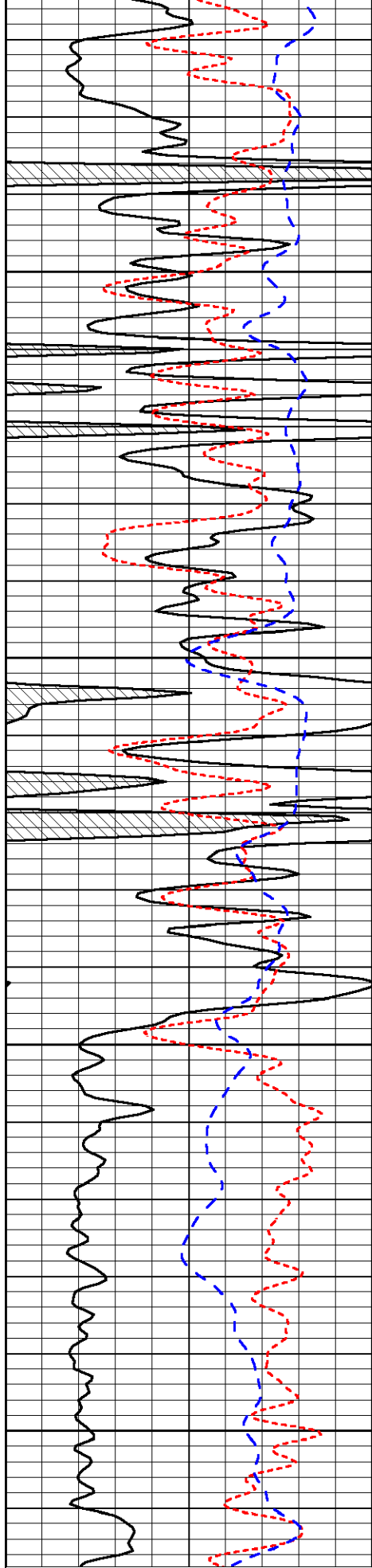
-36

-36

-36

-36

-36



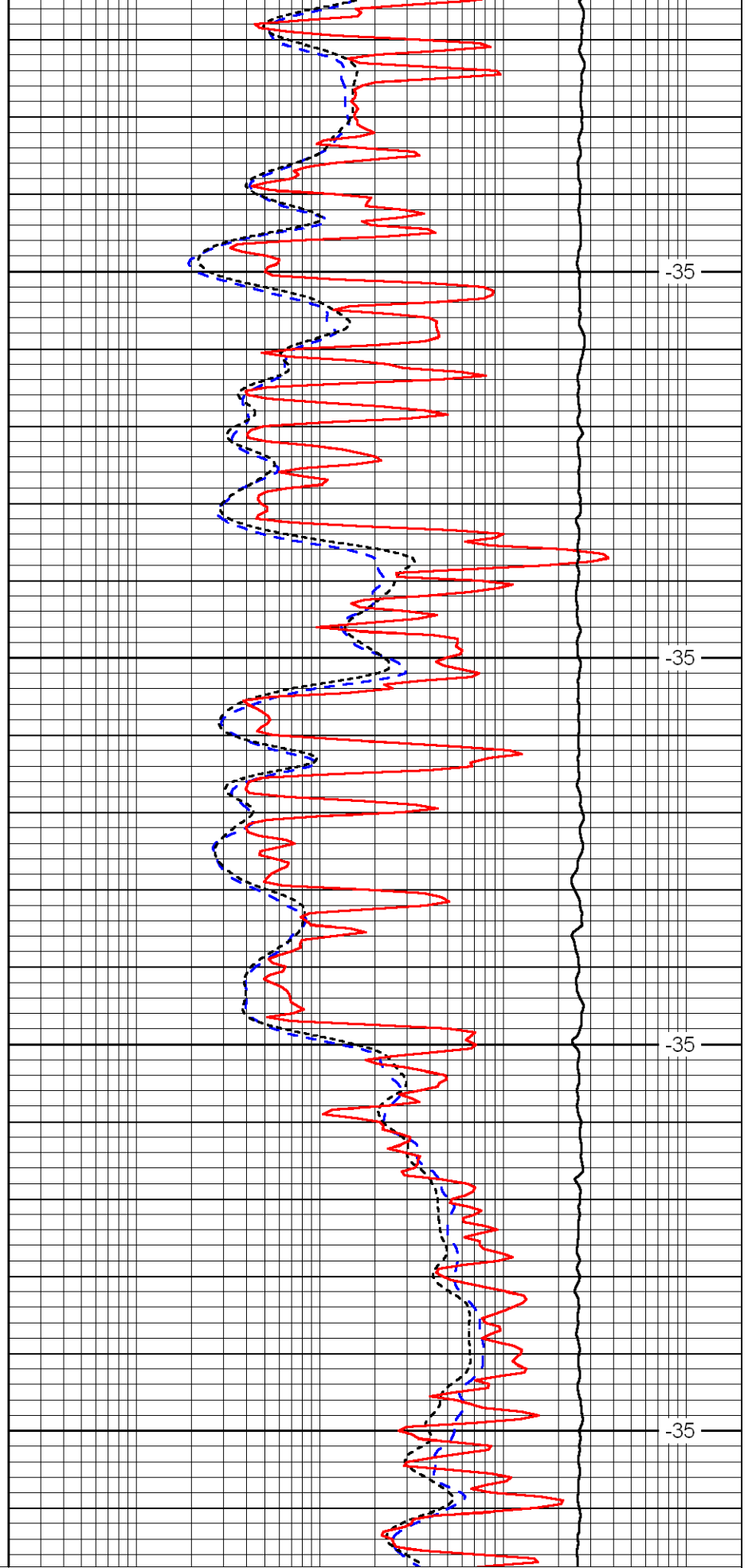
4550

4600

4650

4700

0	Gamma Ray	150
-160	RXO/RT	40
-200	SP (mV)	0



-35

-35

-35

-35

0.2	Deep Resistivity (Ohm-m)	2000
0.2	Medium Resistivity (Ohm-m)	2000
0.2	Shallow Resistivity (Ohm-m)	2000

10000

Line Tension (lb)

0

LSPD
(ft/min)