



Microresistivity Log

DIGITAL LOG (785) 625-3858

API No.	15-109-20913-00-00		
Company	LB Exploration, Inc.		
Well	Munk No. 1	Location	SW - NE - SW - SW 730' FSL & 810' FWL
Field	Wildcat	County	Logan
State	Kansas		
Sec: 27	Twp: 12 S	Rge: 32 W	Elevation K.B. 3006 D.F. 2994 G.L. 2994
Permanent Datum	Ground Level	Elevation	2994
Log Measured From	Kelly Bushing	12 Ft. Above Perm. Datum	
Drilling Measured From	Kelly Bushing		

Date	5/22/2010
Run Number	Two
Depth Driller	4750
Depth Logger	4750
Bottom Logged Interval	4749
Top Log Interval	3600
Casing Driller	8.625 @ 223
Casing Logger	212
Bit Size	7.875
Type Fluid in Hole	Chemical
Salinity, ppm CL	1,200
Density / Viscosity	9.5 52
pH / Fluid Loss	10.0 8.0
Source of Sample	Flowline
Rm @ Meas. Temp	2.20 @ 60
Rmf @ Meas. Temp	1.65 @ 60
Rmc @ Meas. Temp	2.97 @ 60
Source of Rmf / Rmc	Charts
Rm @ BHT	1.07 @ 124
Operating Rig Time	6 Hours
Max Rec. Temp. F	124
Equipment Number	15
Location	Hays
Recorded By	B. Becker
Witnessed By	Scott Alberg

<<< Fold Here >>>

All interpretations are opinions based on inferences from electrical or other measurements and we cannot and do not guarantee the accuracy or correctness of any interpretation, and we shall not, except in the case of gross or willful negligence on our part, be liable or responsible for any loss, costs, damages, or expenses incurred or sustained by anyone resulting from any interpretation made by any of our officers, agents or employees. These interpretations are also subject to our general terms and conditions set out in our current Price Schedule.

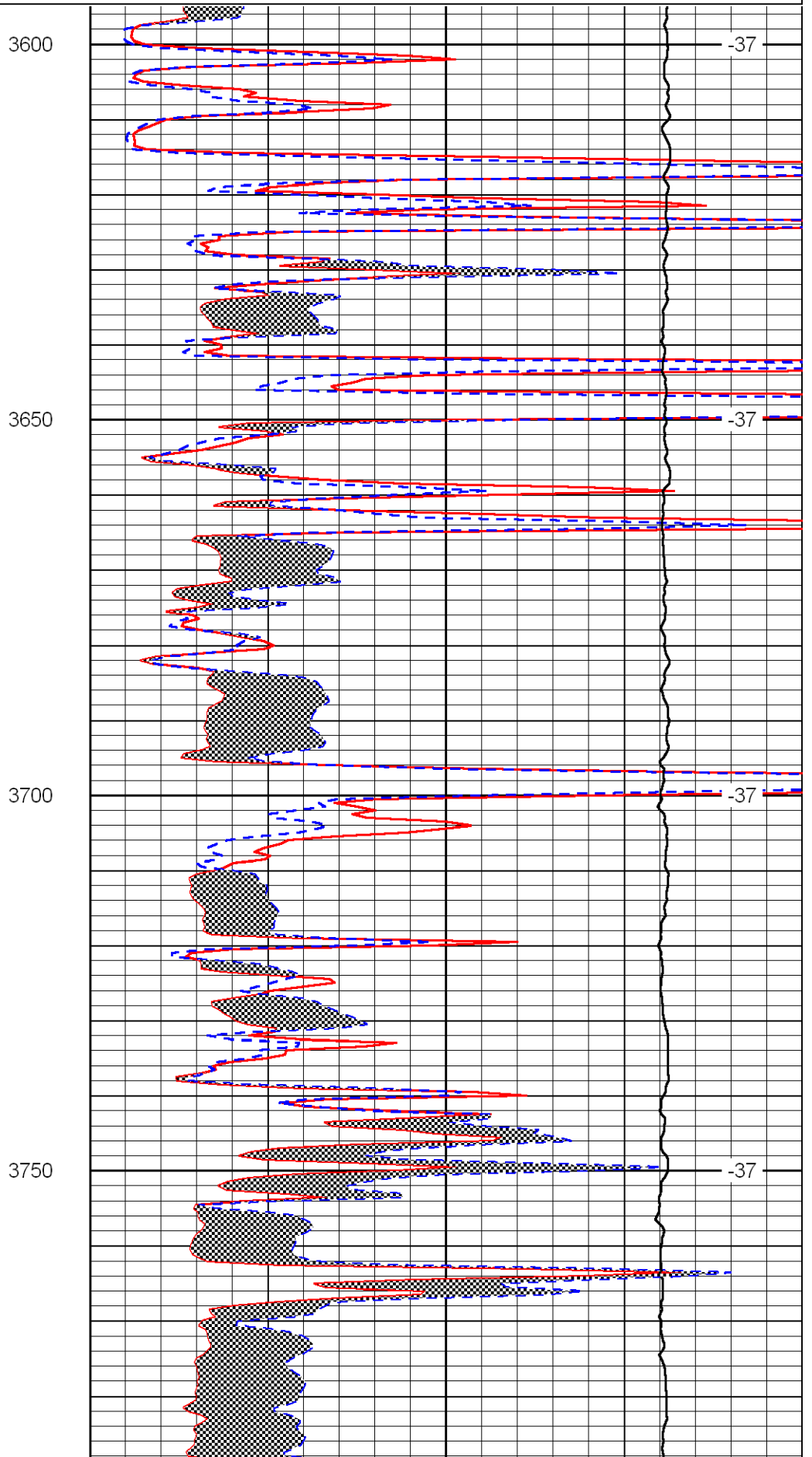
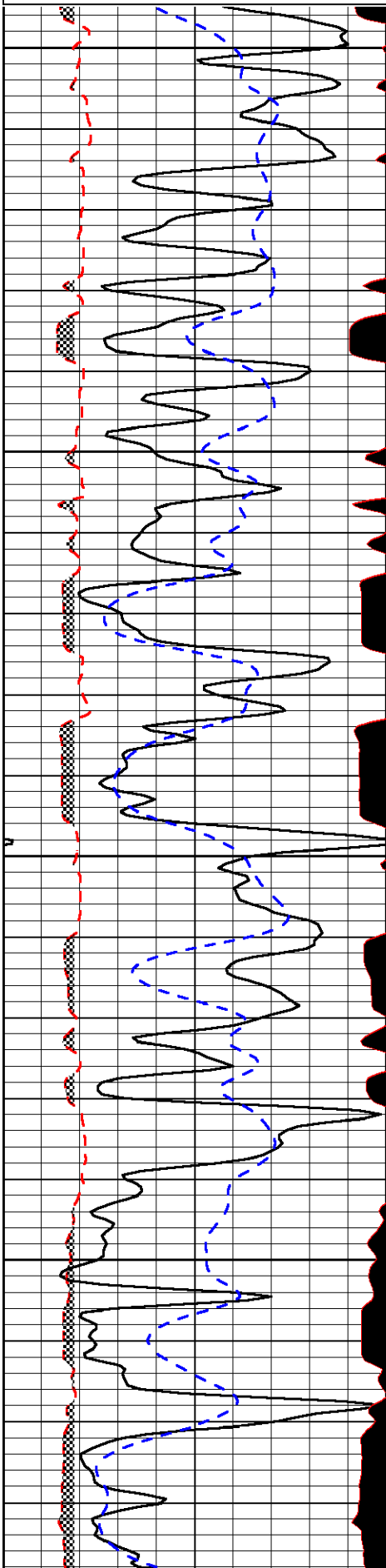
Comments

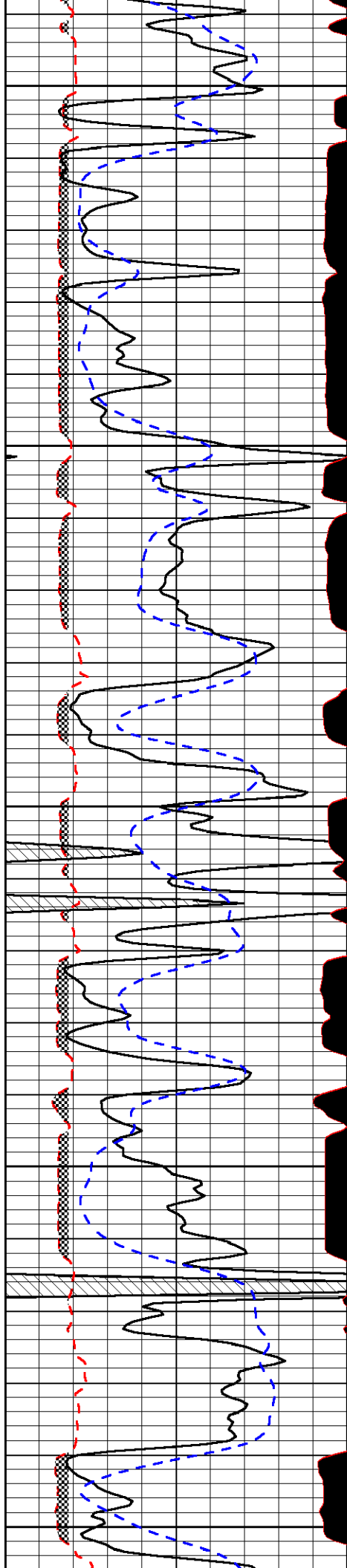
Thank you for using Log-Tech, Inc.
 (785) 625-3858
 Oakley, Ks;
 9 South to Ute Rd;
 1 West; 1/2 South;
 East Into

Database File: lbhd.db
 Dataset Pathname: DIL/lb_stk
 Presentation Format: micro
 Dataset Creation: Sat May 22 08:19:47 2010
 Charted by: Depth in Feet scaled 1:240

0	Gamma Ray	150
6	MCAL (GAPI)	16
2.875	Mud Cake (GAPI)	7.875
-200	SP (mV)	0

0	Micro Inverse 1 X 1 (Ohm-m)	40
0	Micro Normal 2" (Ohm-m)	40
10000	Line Weight (lb)	0
	LSPD (ft/min)	





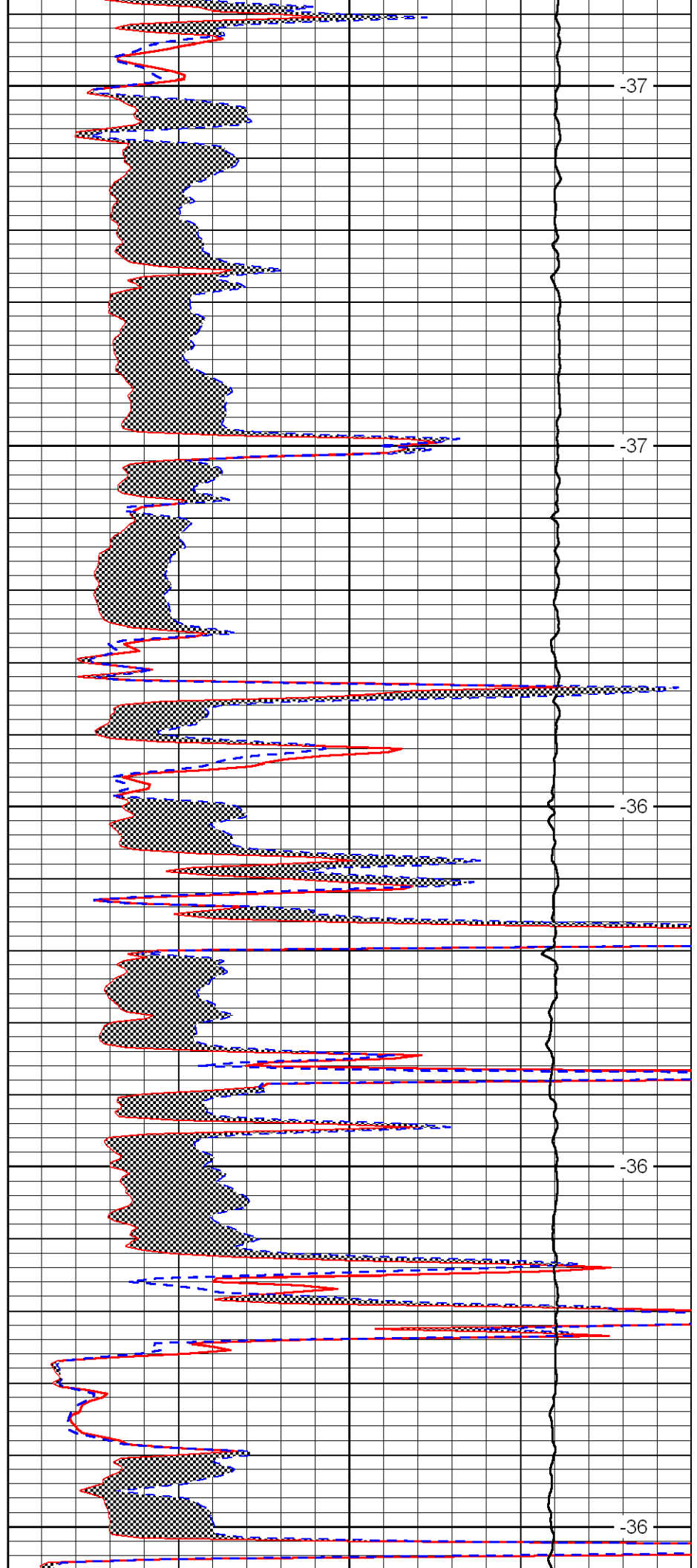
3800

3850

3900

3950

4000



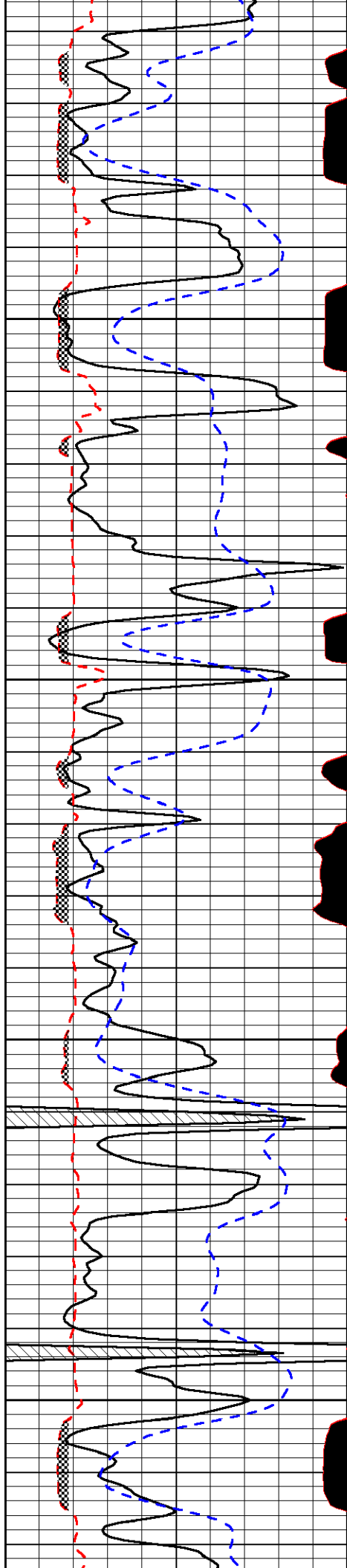
-37

-37

-36

-36

-36

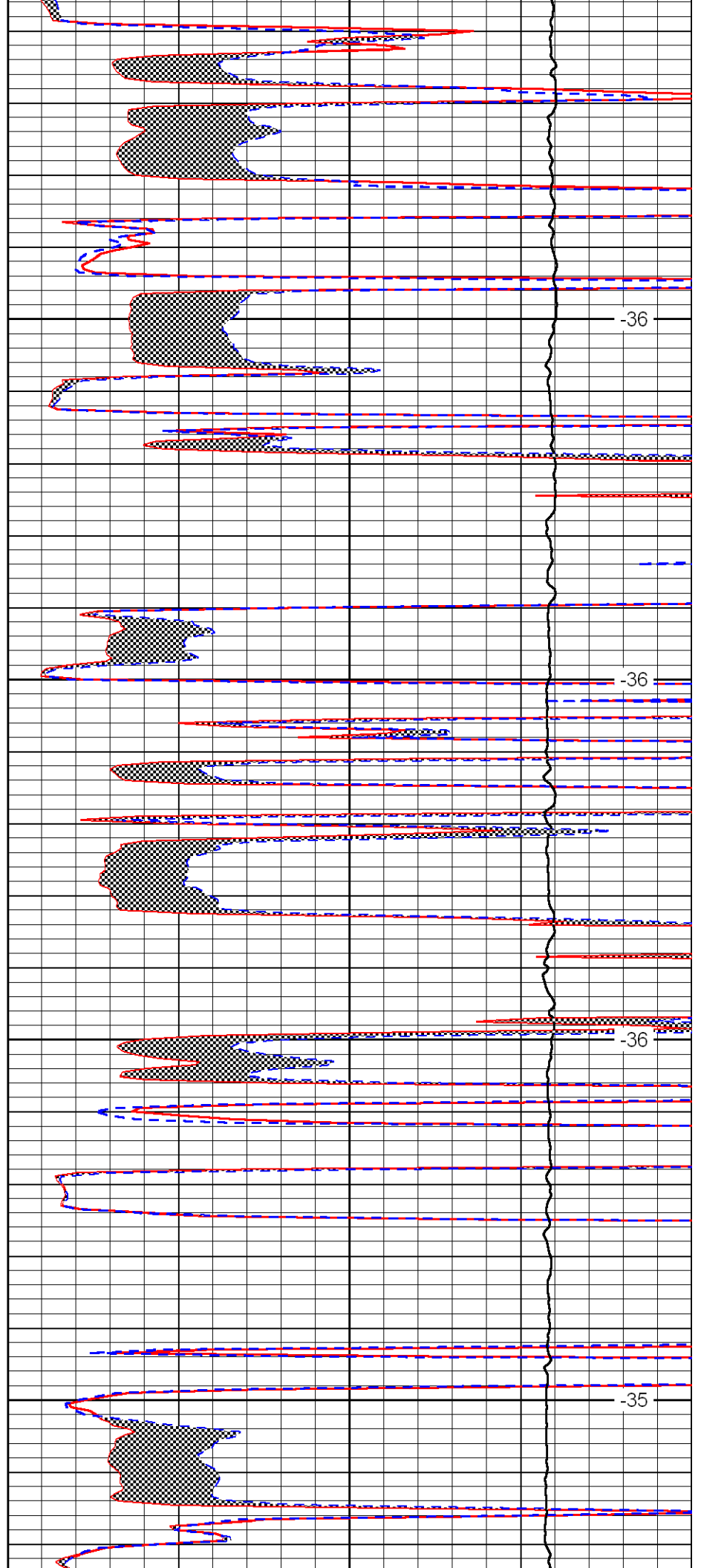


4050

4100

4150

4200

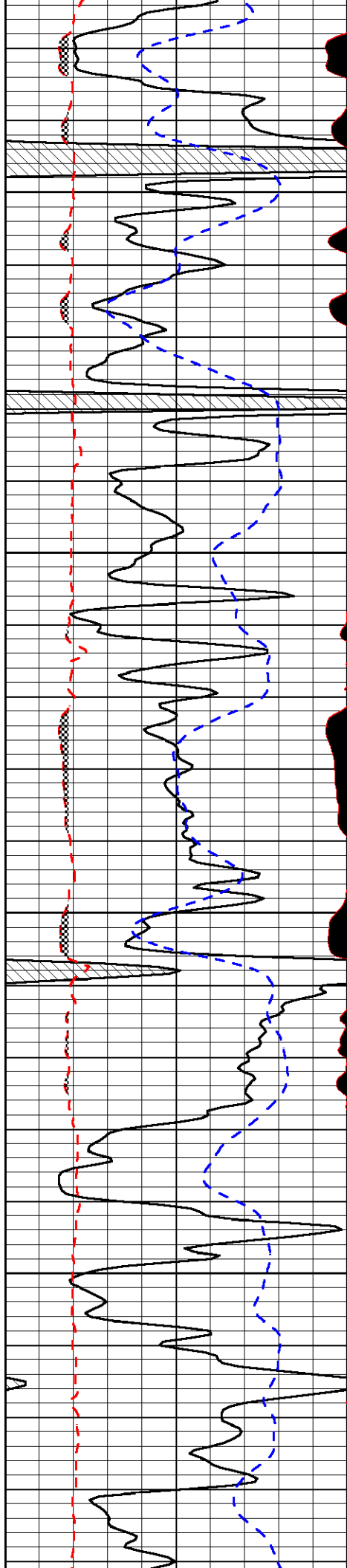


-36

-36

-36

-35

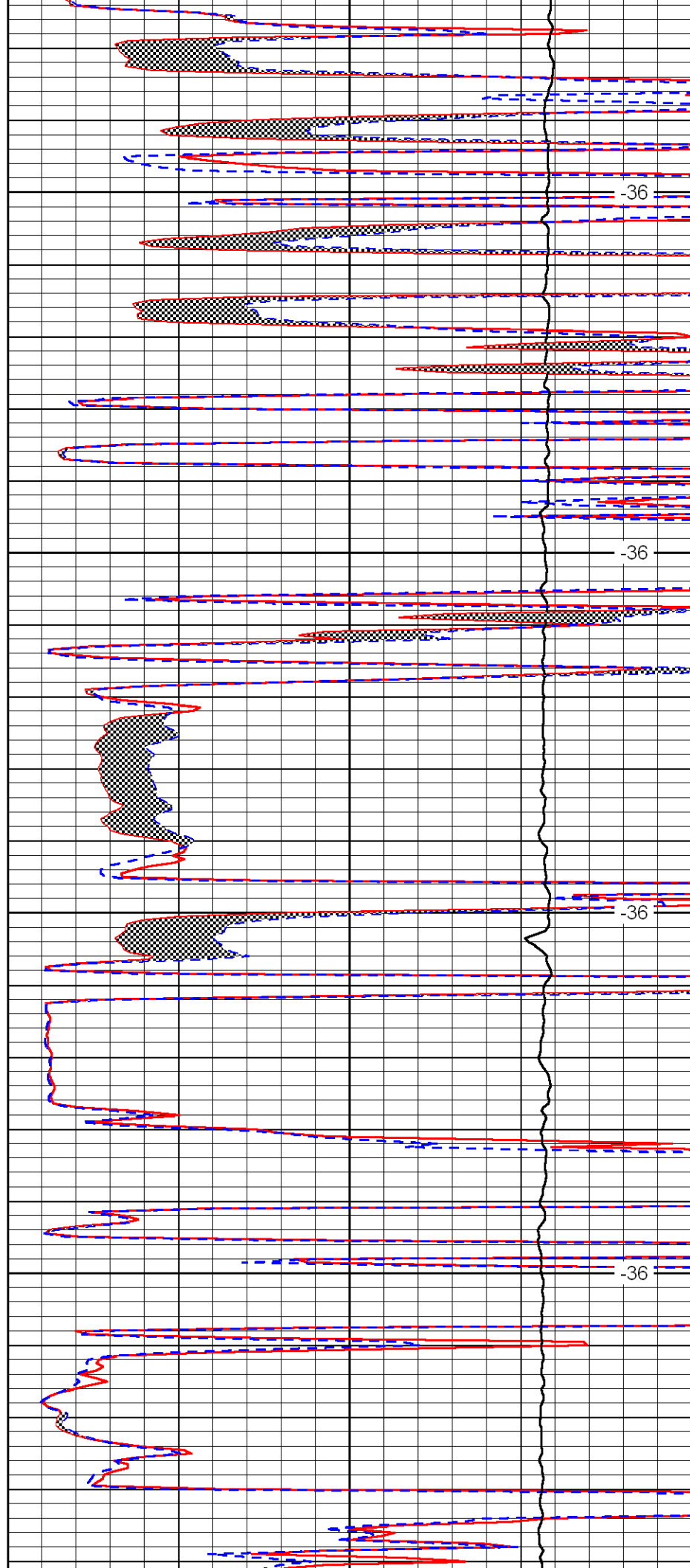


4250

4300

4350

4400

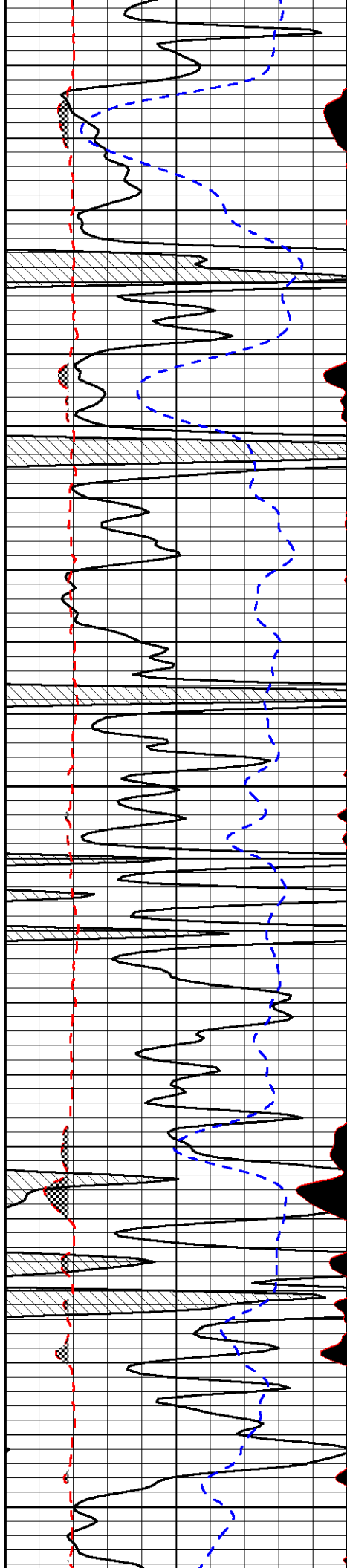


-36

-36

-36

-36



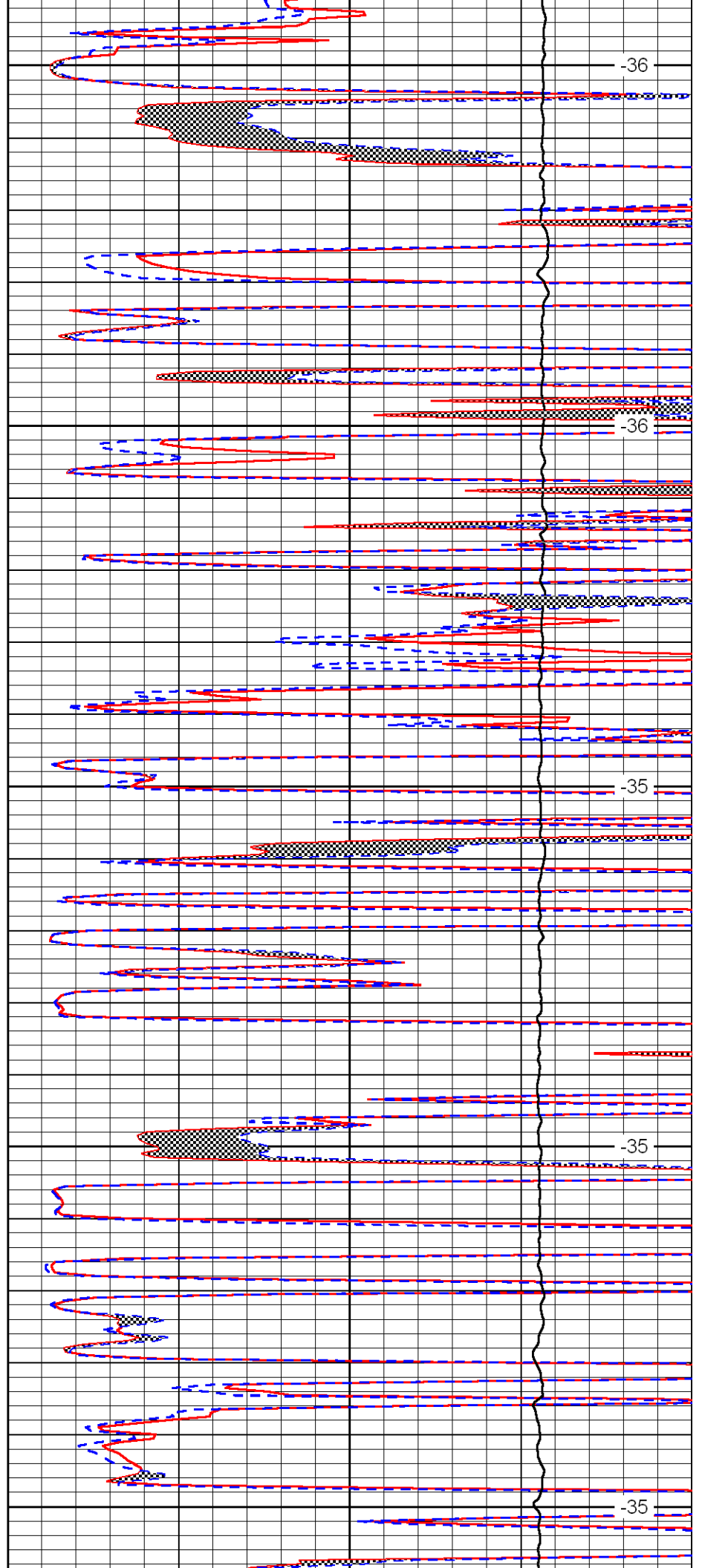
4450

4500

4550

4600

4650



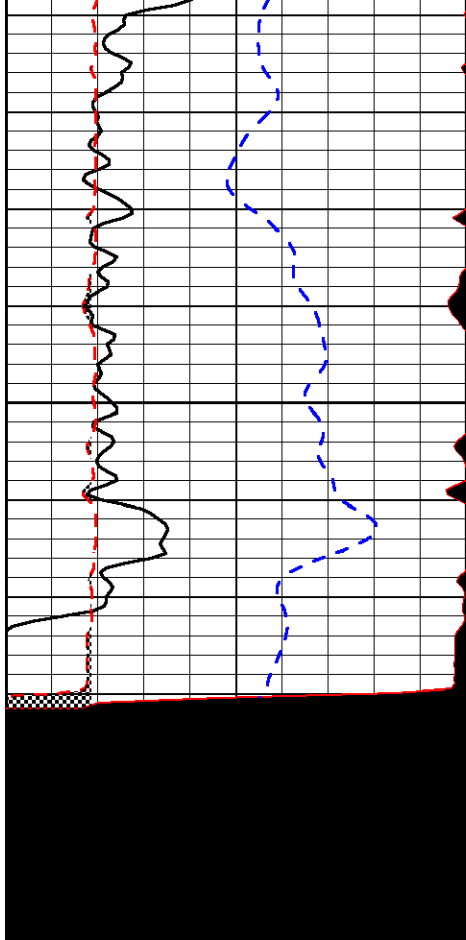
-36

-36

-35

-35

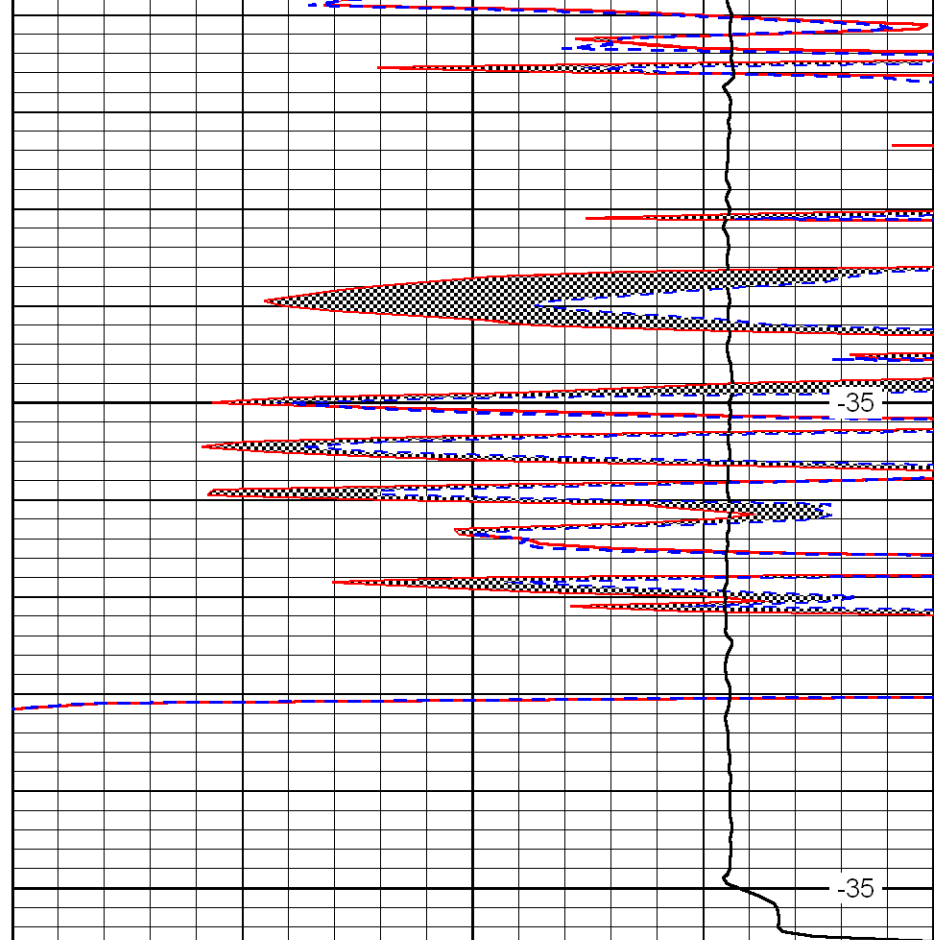
-35



4700

4750

0	Gamma Ray	150
6	MCAL (GAPI)	16
2.875	Mud Cake (GAPI)	7.875
-200	SP (mV)	0



-35

-35

0	Micro Inverse 1 X 1 (Ohm-m)	40
0	Micro Normal 2" (Ohm-m)	40
10000	Line Weight (lb)	0

LSPD
(ft/min)