

Company AMERICAN WARRIOR, INC.  
Well THOMPSON-SCHADEL UNIT NO. 1  
Field SCHADEL  
County RUSH  
State KANSAS

Company AMERICAN WARRIOR, INC.  
Well THOMPSON-SCHADEL UNIT NO. 1  
Field SCHADEL  
County RUSH State KANSAS

Location: 2556' FNL & 2050' FWL  
SEC 31 TWP 19S RGE 20W  
Permanent Datum GROUND LEVEL Elevation 2266  
Log Measured From KELLY BUSHING 6' A.G.L.  
Drilling Measured From KELLY BUSHING  
API #: 15-165-21858-00-00  
Other Services  
Elevation  
K.B. 2272  
D.F.  
G.L. 2266

Date	SEPT. 15, 2010						
Run Number	ONE						
Depth Driller	4398						
Depth Logger	4394						
Bottom Logged Interval	4392						
Top Log Interval	3100						
Open Hole Size	///						
Type Fluid	WATER						
Density / Viscosity	///						
Max. Recorded Temp.	120F						
Estimated Cement Top	3290						
Time Well Ready	///						
Time Logger on Bottom	///						
Equipment Number	PT-06						
Location	HAYS						
Recorded By	BOB KLAUS						
Witnessed By	MR SCOTT CORSAIR						
Borehole Record							
Run Number	Bit	From	To	Size	Weight	From	To
ONE	12.25	00	224				
TWO	7.875	224	4398				
Tubing Record							
Casing Record	Size	Wgt/Ft	Top	Bottom			
Surface String	8 5/8	23#	00	224			
Prot. String							
Production String	5 1/2	15.5#	00	4394			
Liner							

<<< Fold Here >>>

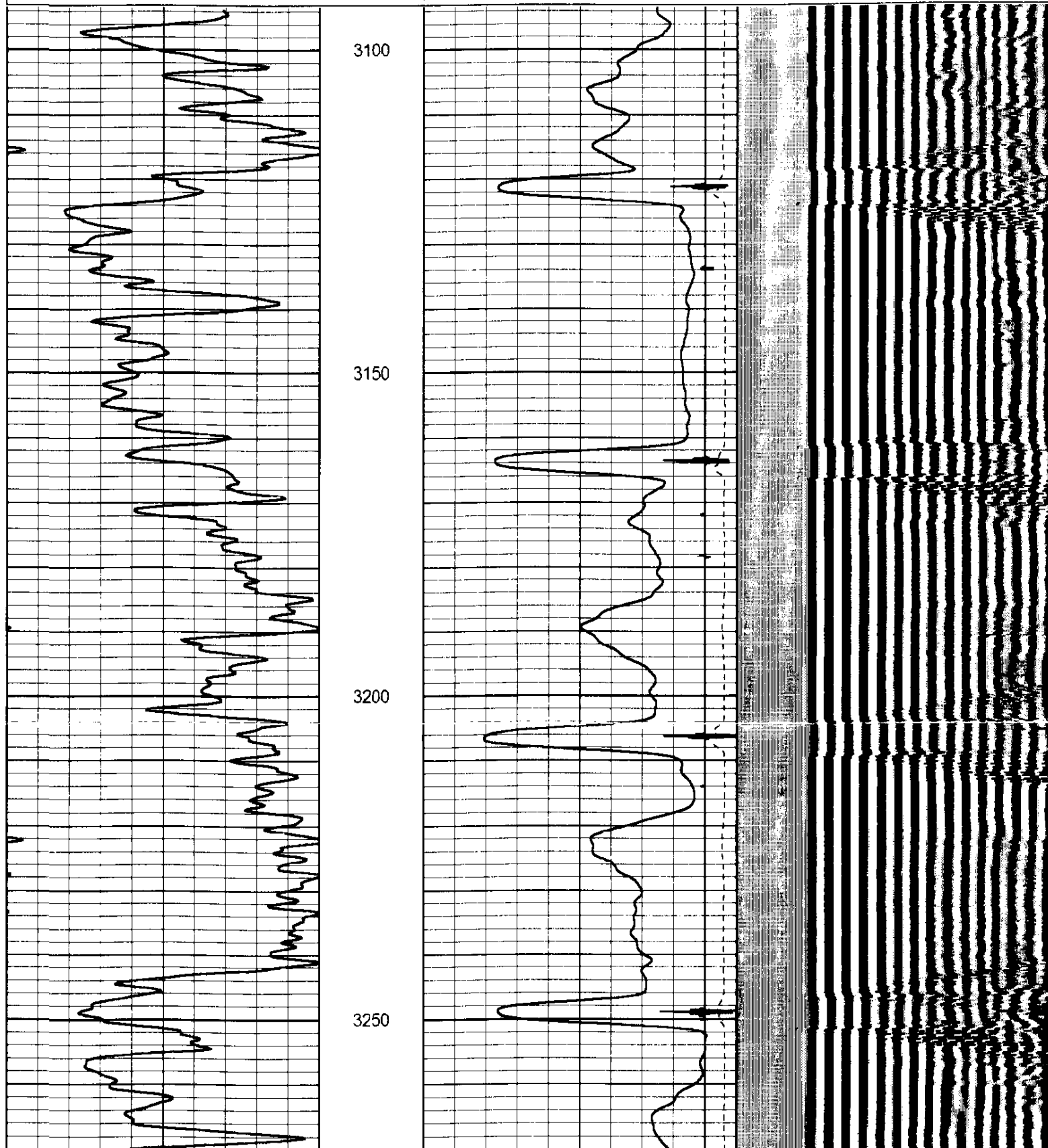
All interpretations are opinions based on inferences from electrical or other measurements and we cannot and do not guarantee the accuracy or correctness of any interpretation, and we shall not, except in the case of gross or willful negligence on our part, be liable or responsible for any loss, costs, damages, or expenses incurred or sustained by anyone resulting from any interpretation made by any of our officers, agents or employees. These interpretations are also subject to our general terms and conditions set out in our current Price Schedule.

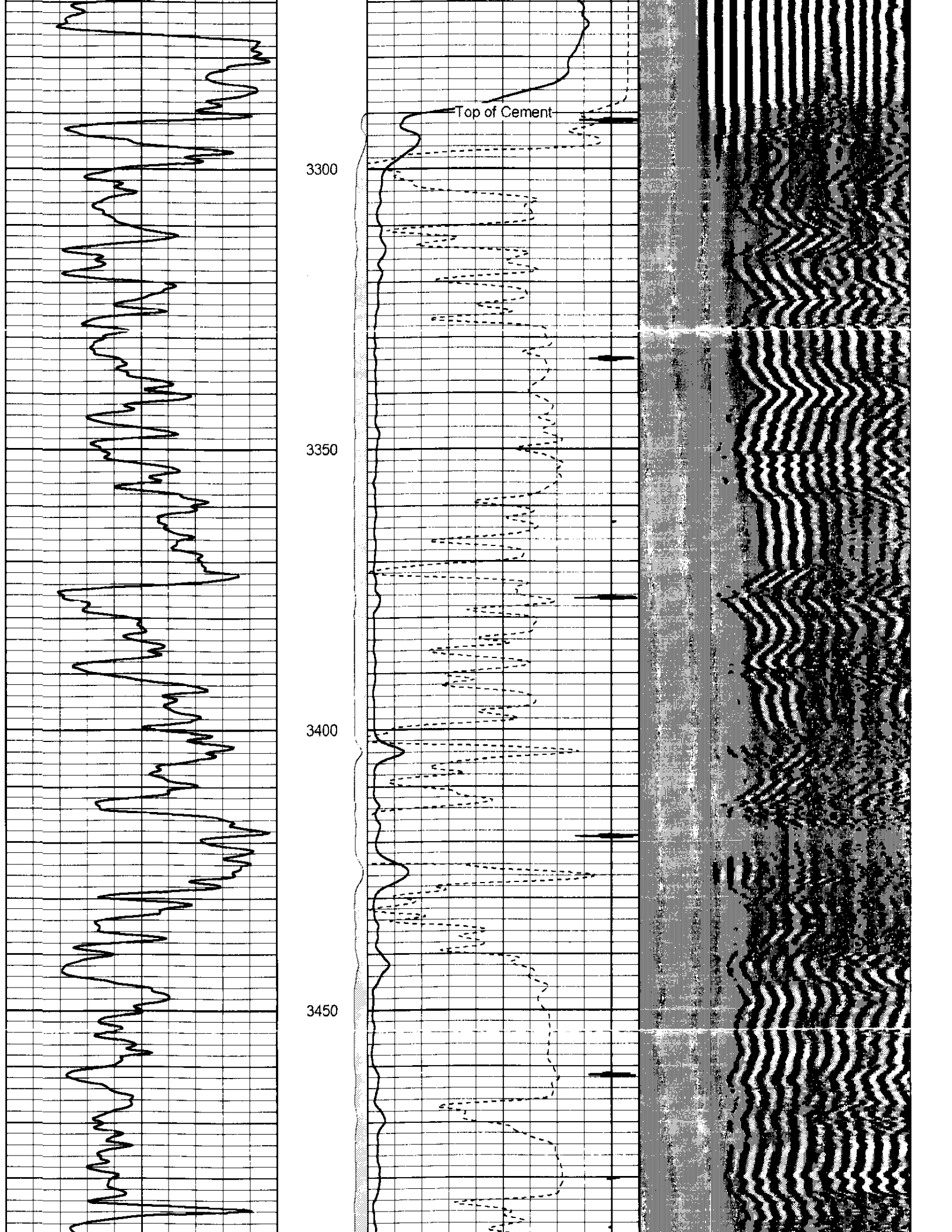
Comments

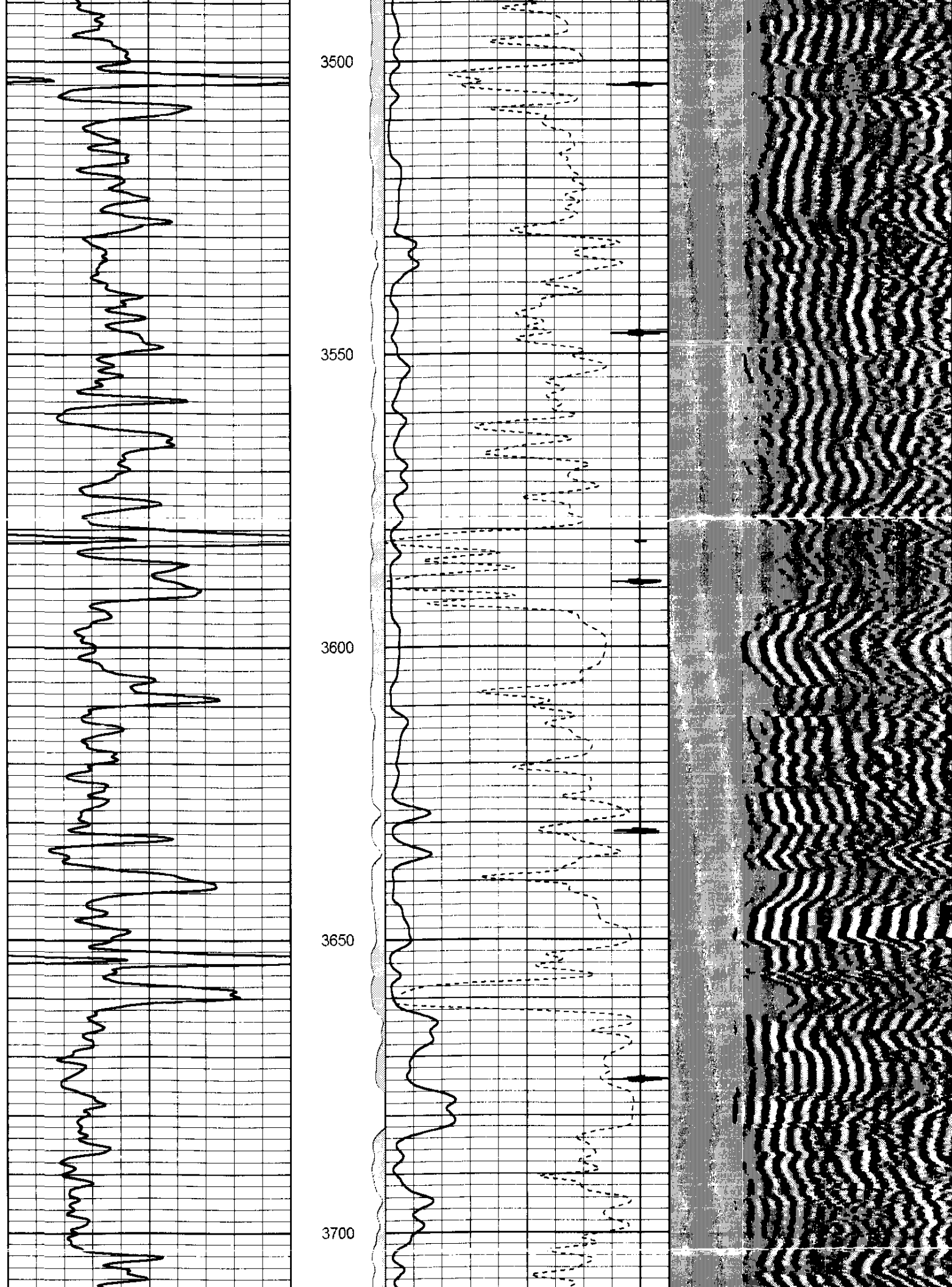
THANK YOU FOR USING  
PERF-TECH  
WIRELINE SERVICES, INC.  
785-628-3969

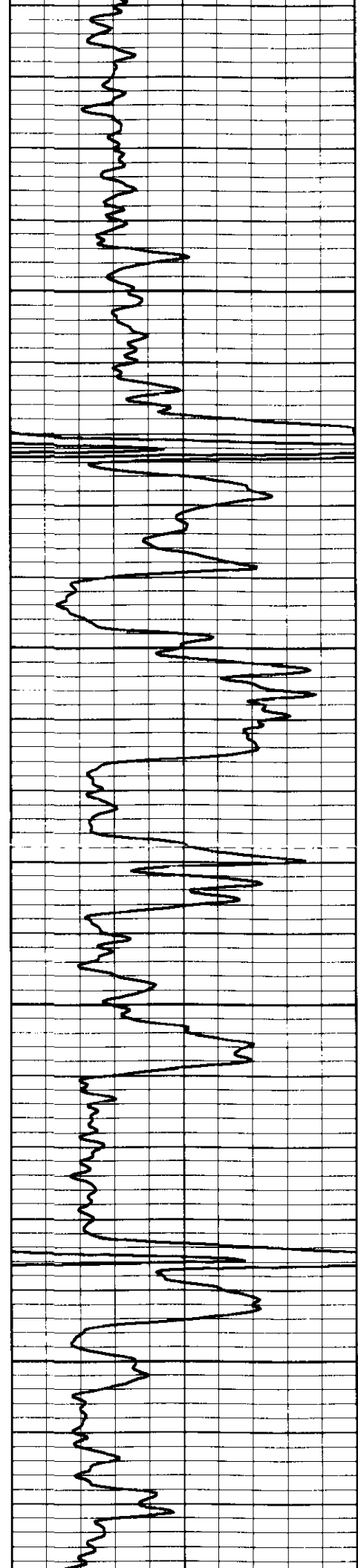
Database File: sept151006.db  
Dataset Pathname: pass4  
Presentation Format: 3x5  
Dataset Creation: Wed Sep 15 08:50:07 2010 by Log Std Casedhole 07081  
Charted by: Depth in Feet scaled 1:240

0	Gamma Ray (GAPI)	150	0	3' AMPLITUDE (mV)	100	200	5' Variable Density	1100
			775	3' TRAVEL TIME (usec)	275			
			9	Collar Locator	-1			







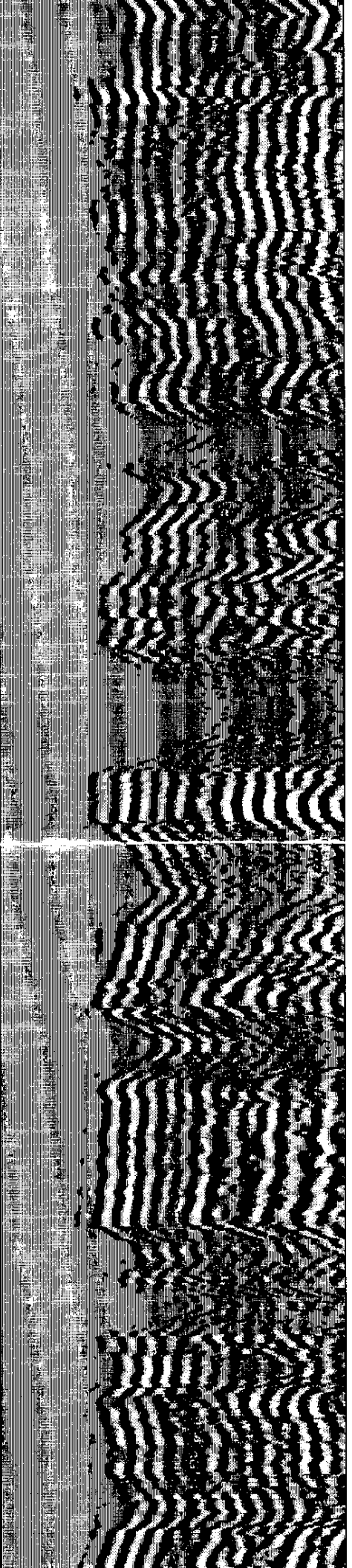
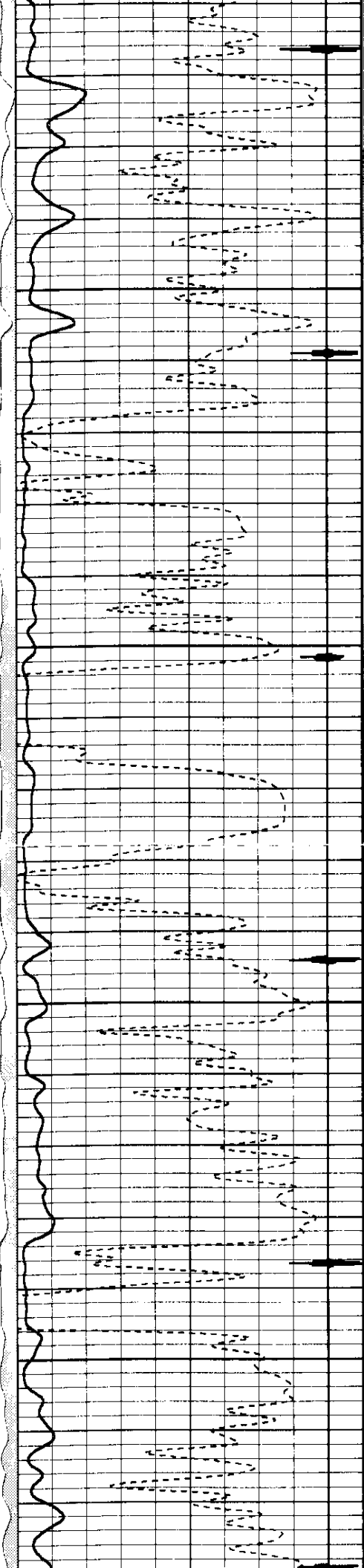


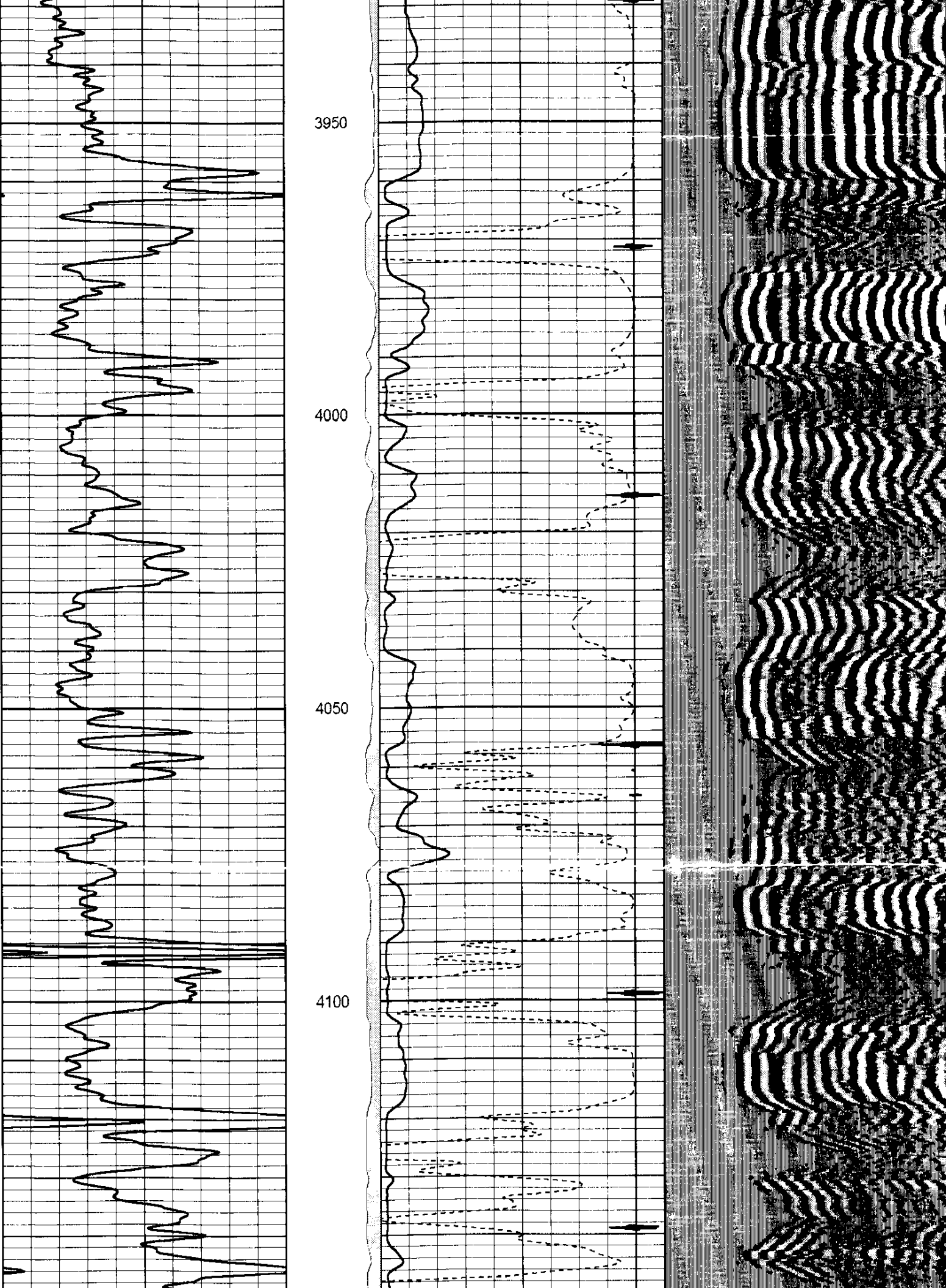
3750

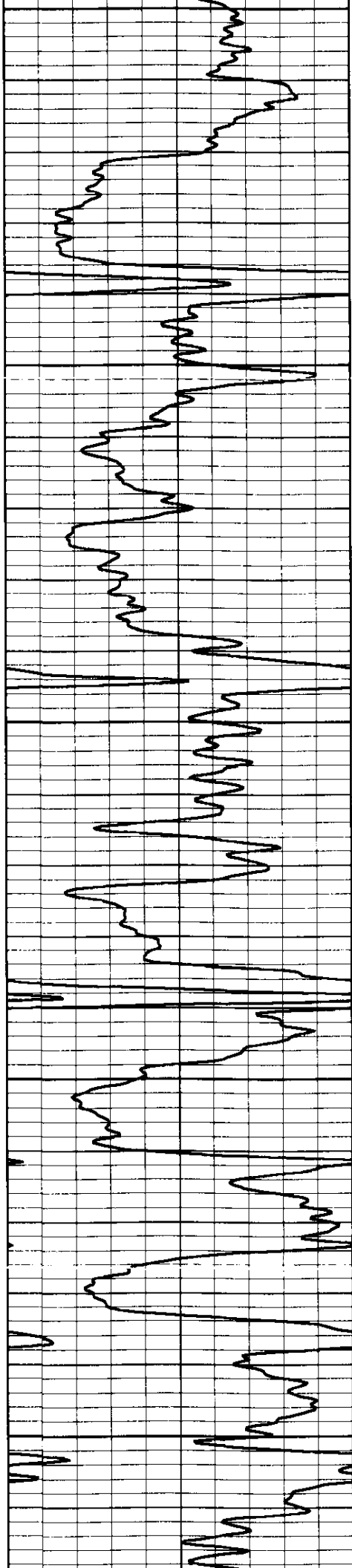
3800

3850

3900







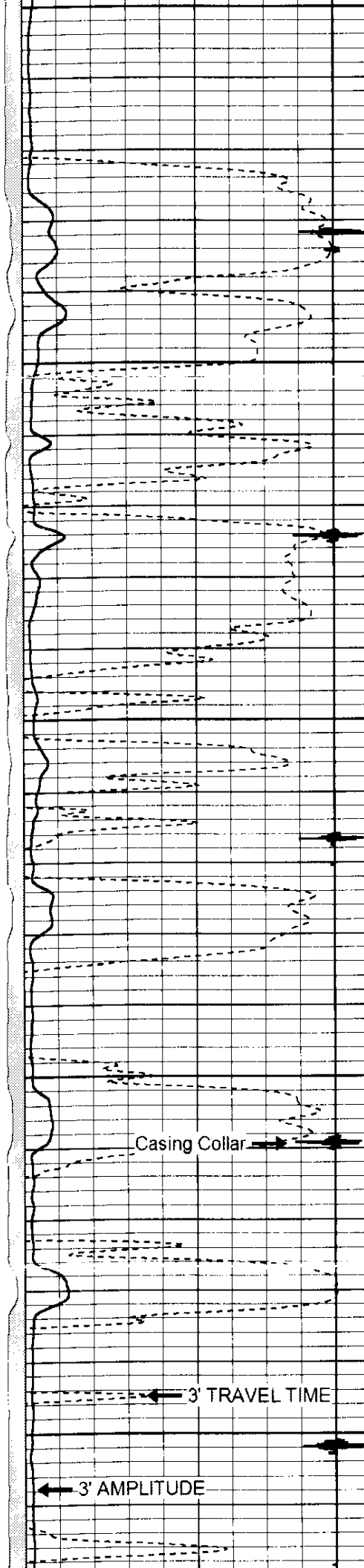
4150

4200

4250

4300

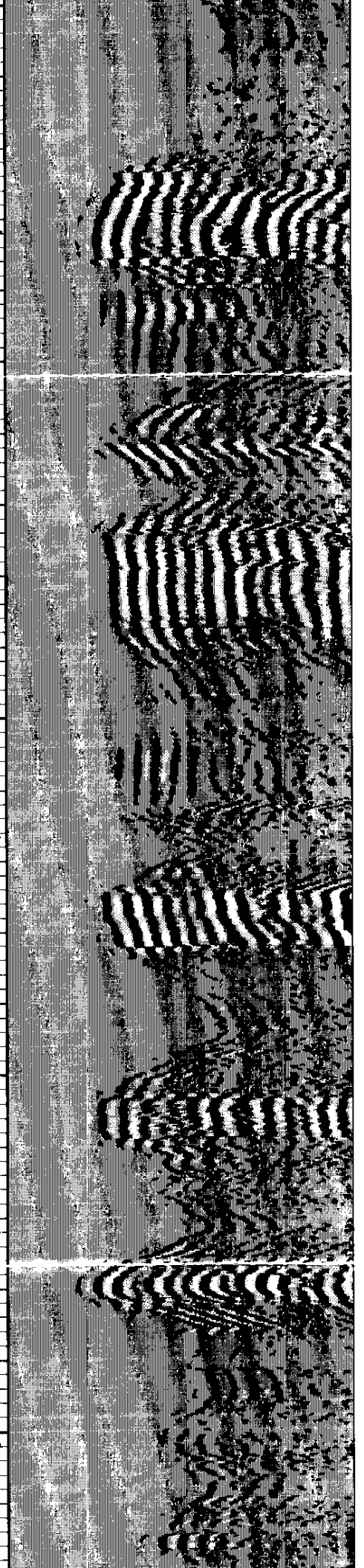
4350

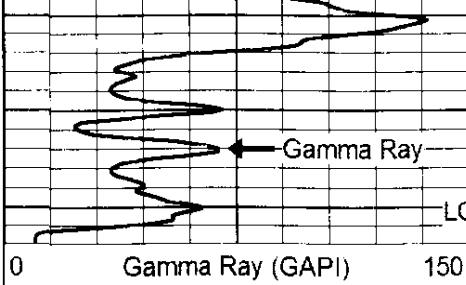


Casing Collar →

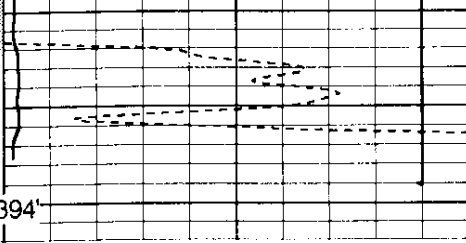
← 3' TRAVEL TIME

← 3' AMPLITUDE





LOGGED TD 4394'



775	3' TRAVEL TIME (usec)	275
9	Collar Locator	-1

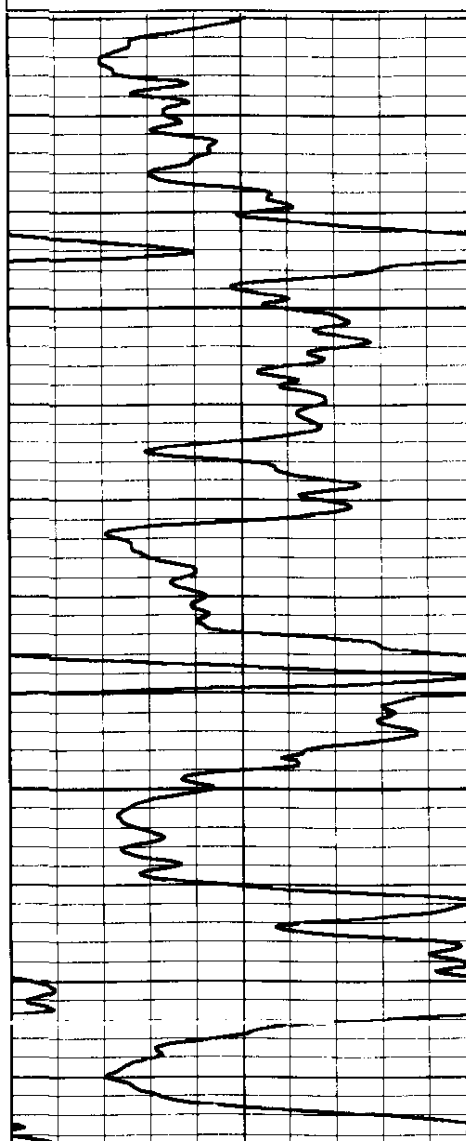
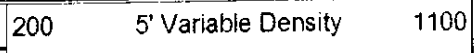
**Perf-Tech**  
Wireline Services

# REPEAT SECTION

Database File: sept151006.db  
 Dataset Pathname: pass3  
 Presentation Format: 3x5  
 Dataset Creation: Wed Sep 15 08:43:21 2010 by Log Std Casedhole 07081  
 Charted by: Depth in Feet scaled 1:240

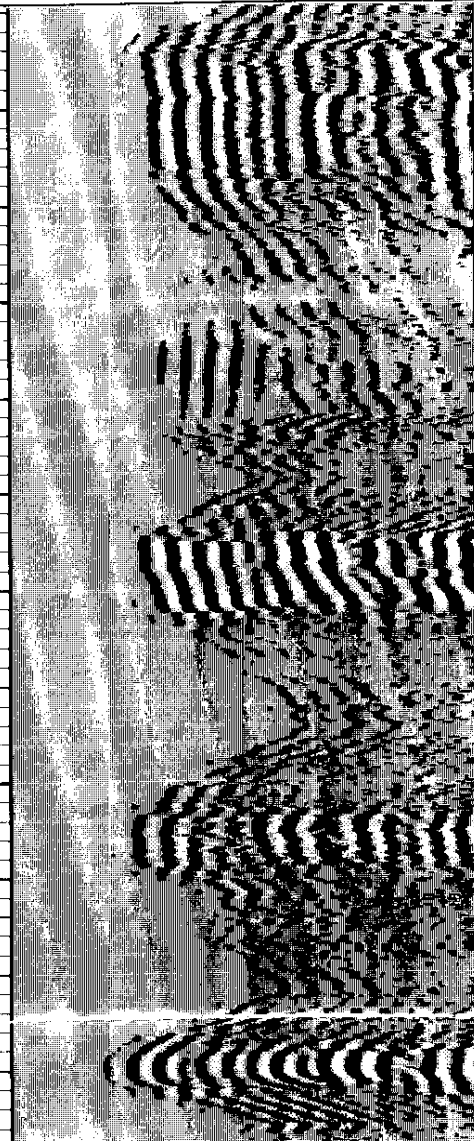
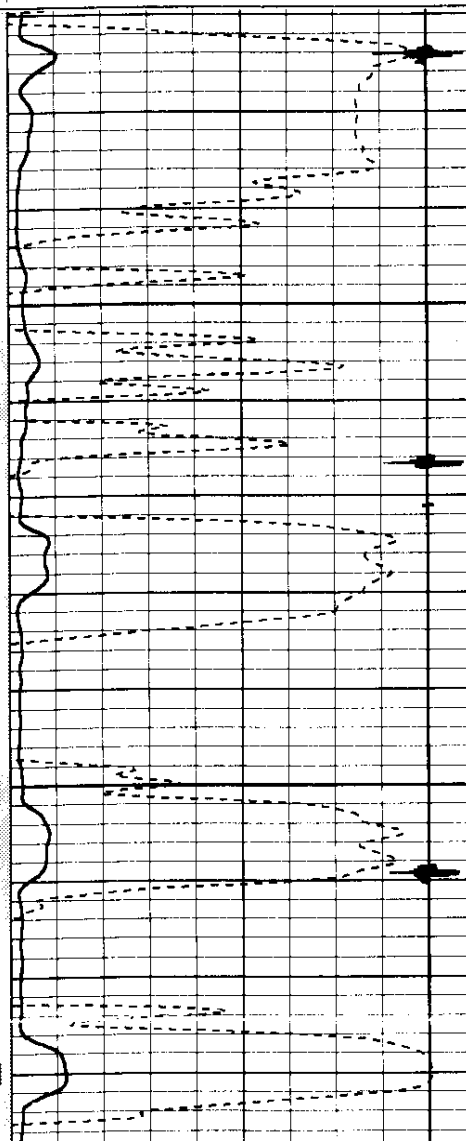


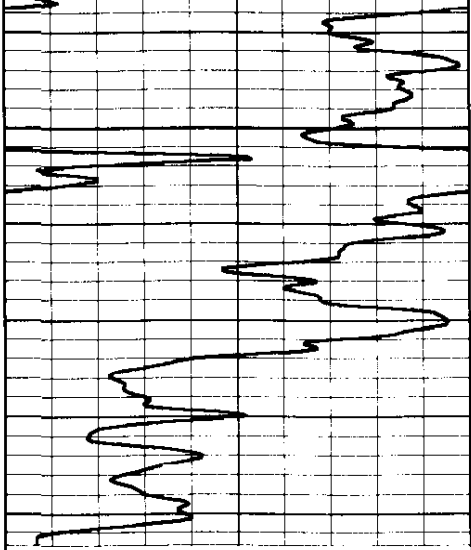
0	3' AMPLITUDE (mV)	100
775	3' TRAVEL TIME (usec)	275
9	Collar Locator	-1



4250

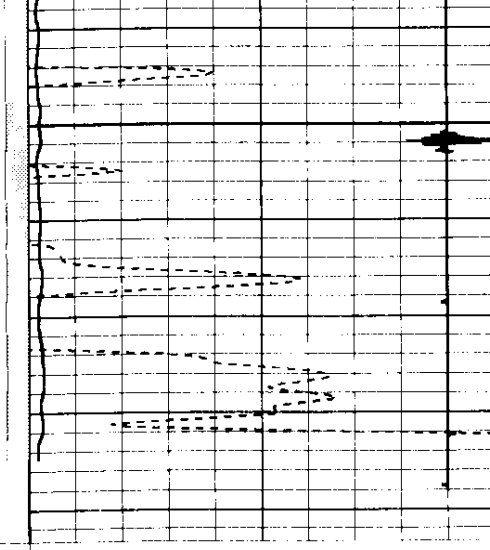
4300





0 Gamma Ray (GAPI) 150

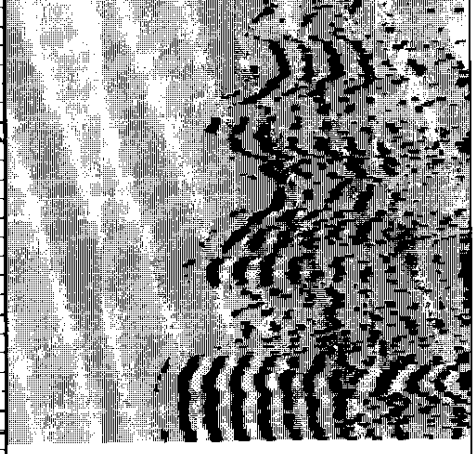
4350



0 3' AMPLITUDE (mV) 100

775 3' TRAVEL TIME (usec) 275

9 Collar Locator -1



200 5' Variable Density 1100