



DIGITAL LOG (785) 625-3858

Dual Induction Log

API No. 15-185-23,648-00-00

Company **L.D. Drilling, Inc.**
 Well **Hilda No. 2-3**
 Field **Max**
 County **Stafford** State **Kansas**

Location **NW/NW/NW/NE
 276' FNL & 2,563' FEL**

Sec: **3** Twp: **22S** Rge: **12W**

Other Services
 CNL/CDL
 MEL

Permanent Datum **Ground Level** Elevation **1852**
 Log Measured From **Kelly Bushing** 9 Ft. Above Perm. Datum
 Drilling Measured From **Kelly Bushing**

Elevation
 K.B. 1861
 D.F. 1852
 G.L. 1852

Date	2/11/2011
Run Number	One
Depth Driller	3720
Depth Logger	3720
Bottom Logged Interval	3719
Top Log Interval	350
Casing Driller	8.625 @ 350
Casing Logger	348
Bit Size	7.875
Type Fluid in Hole	Chemical
Salinity, ppm CL	5800
Density / Viscosity	9.3 50
pH / Fluid Loss	10.4 9.0
Source of Sample	Flowline
Rm @ Meas. Temp	.31 @ 42
Rmf @ Meas. Temp	.23 @ 42
Rmc @ Meas. Temp	.42 @ 42
Source of Rmf / Rmc	Charts
Rm @ BHT	.12 @ 113
Operating Rig Time	4 Hours
Max Rec. Temp. F	113
Equipment Number	10
Location	Hays
Recorded By	J. Long
Witnessed By	Jim Musgrove

<<< Fold Here >>>

All interpretations are opinions based on inferences from electrical or other measurements and we cannot and do not guarantee the accuracy or correctness of any interpretation, and we shall not, except in the case of gross or willful negligence on our part, be liable or responsible for any loss, costs, damages, or expenses incurred or sustained by anyone resulting from any interpretation made by any of our officers, agents or employees. These interpretations are also subject to our general terms and conditions set out in our current Price Schedule.

Comments

Thank you for using Log-Tech, Inc.
 (785) 625-3858

Ike & Joe's, 1 North, 1 1/2 West, South Into

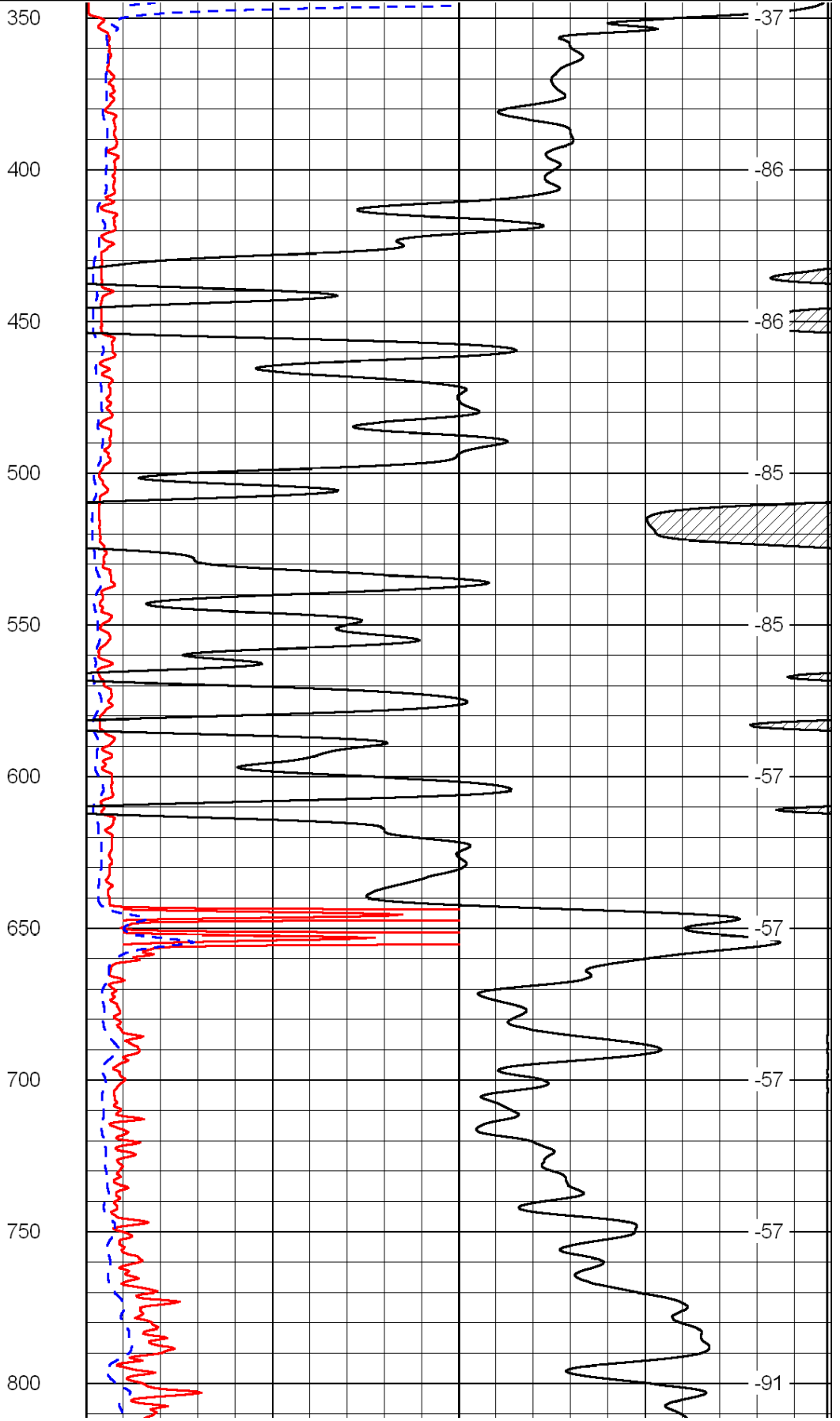
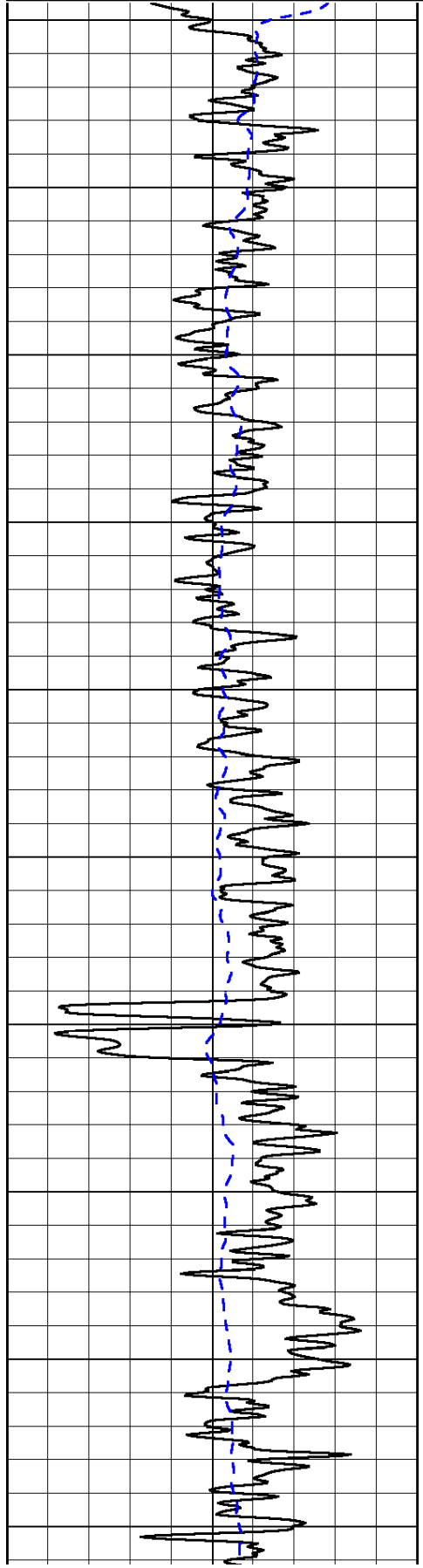
0	Gamma Ray	150
-200	SP (mV)	0

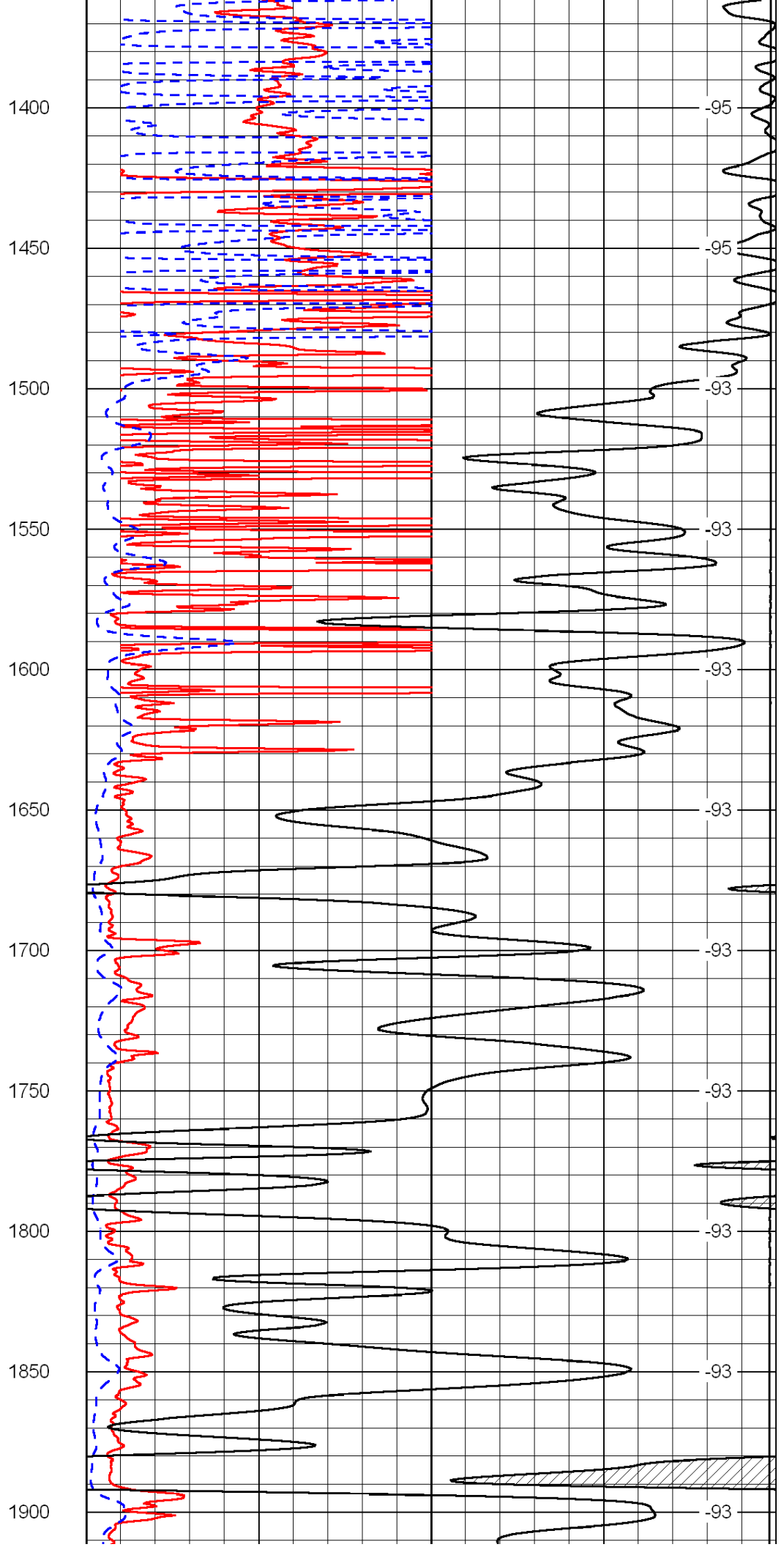
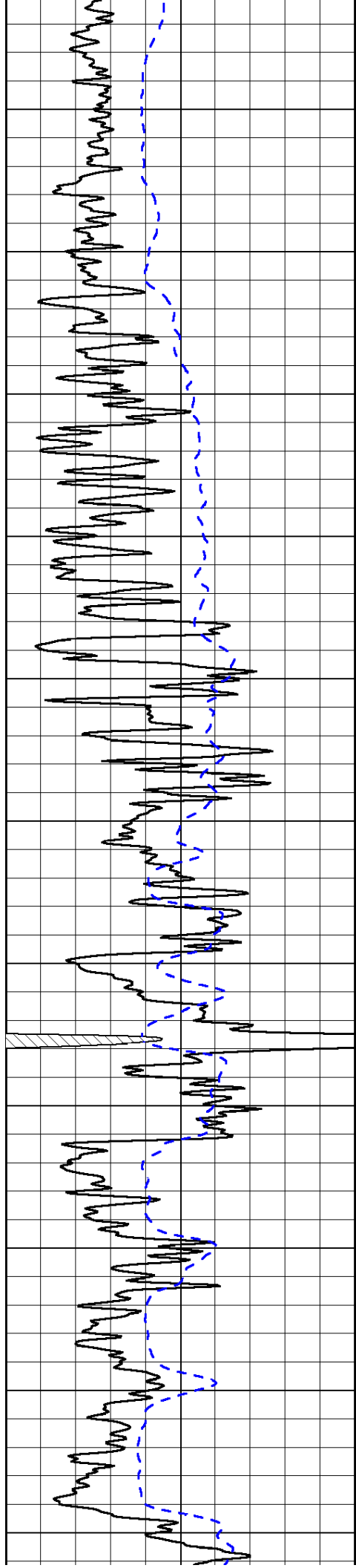
0	Shallow Resistivity	50
0	Deep Resistivity	50

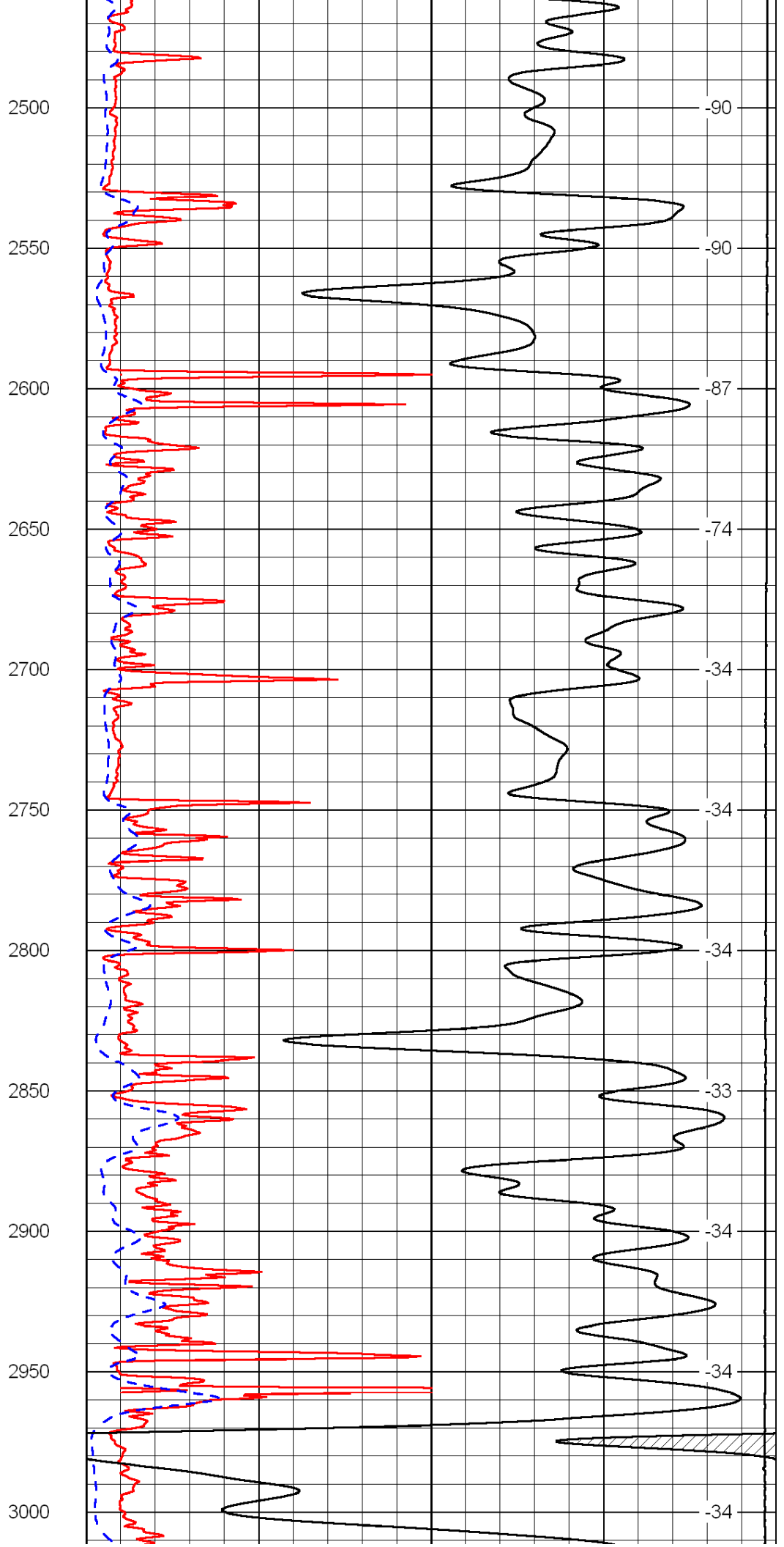
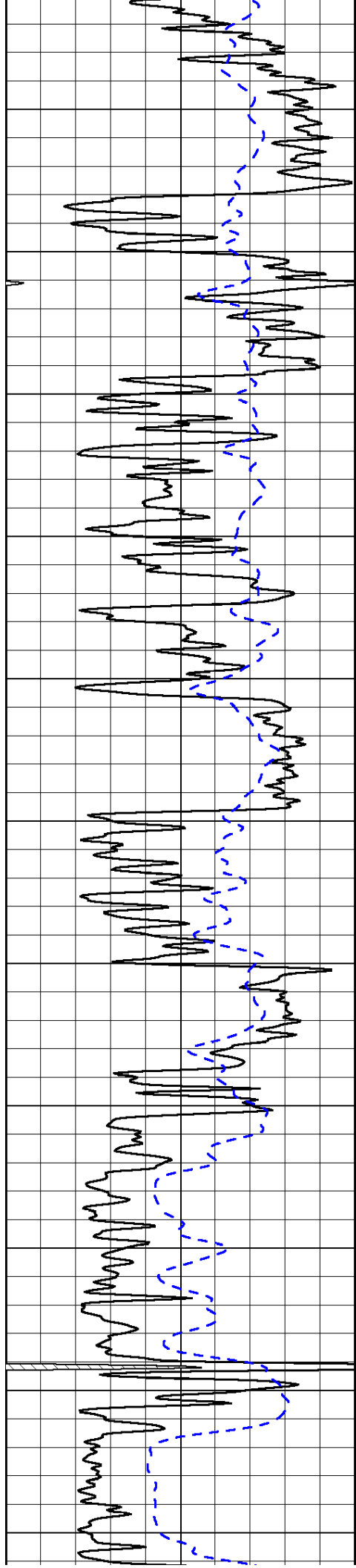
LSPD

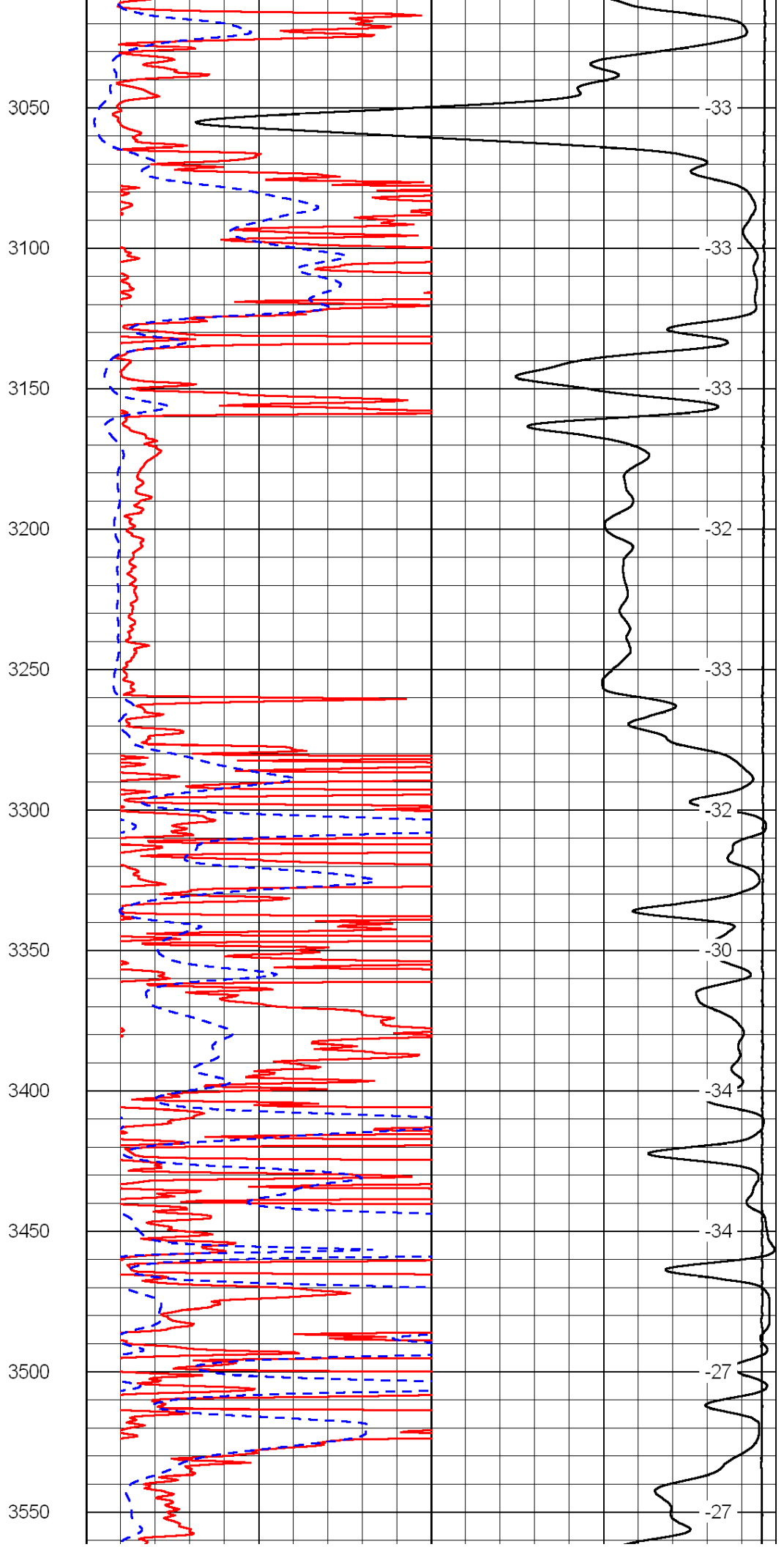
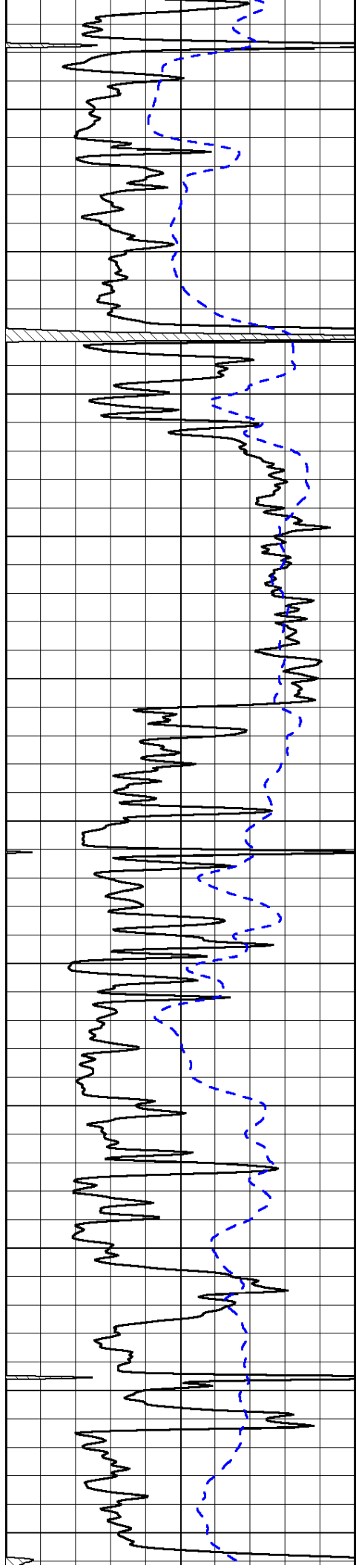
1000	Conductivity	0
15000	Line Tension	0

50	Shallow Resistivity	500
50	Deep Resistivity	500

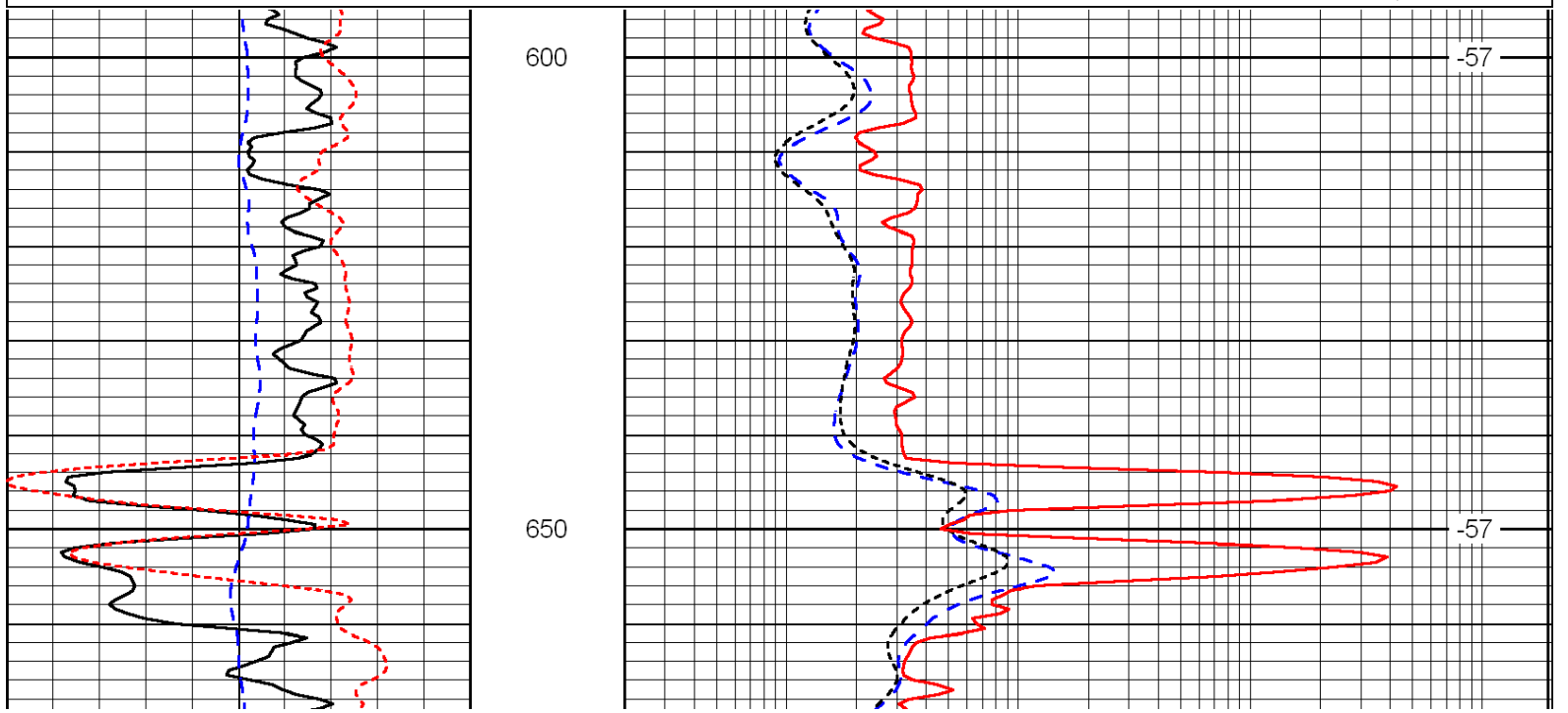
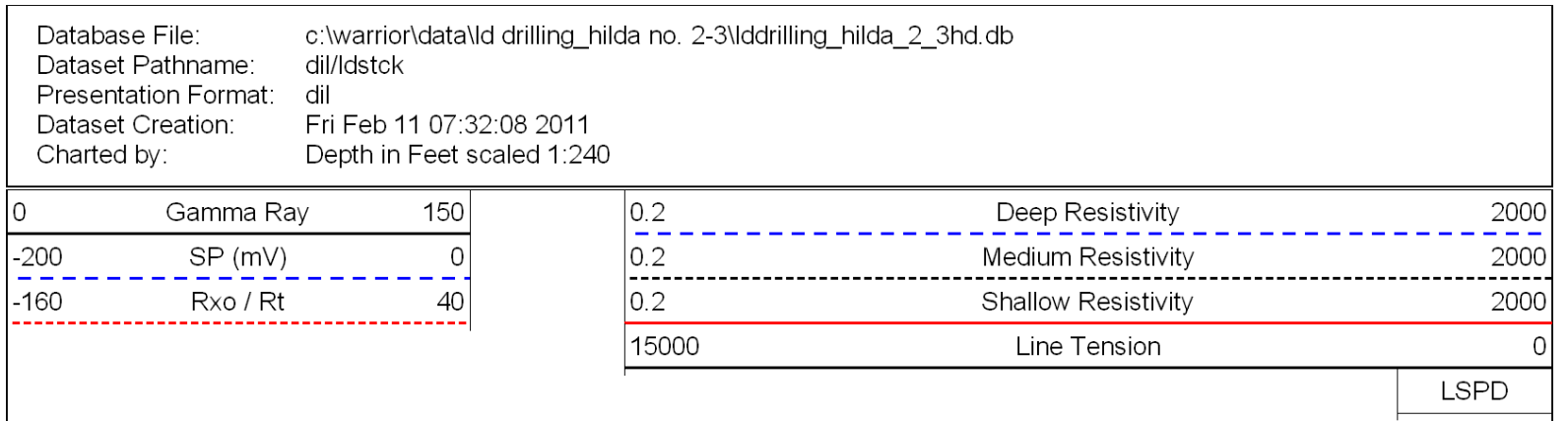
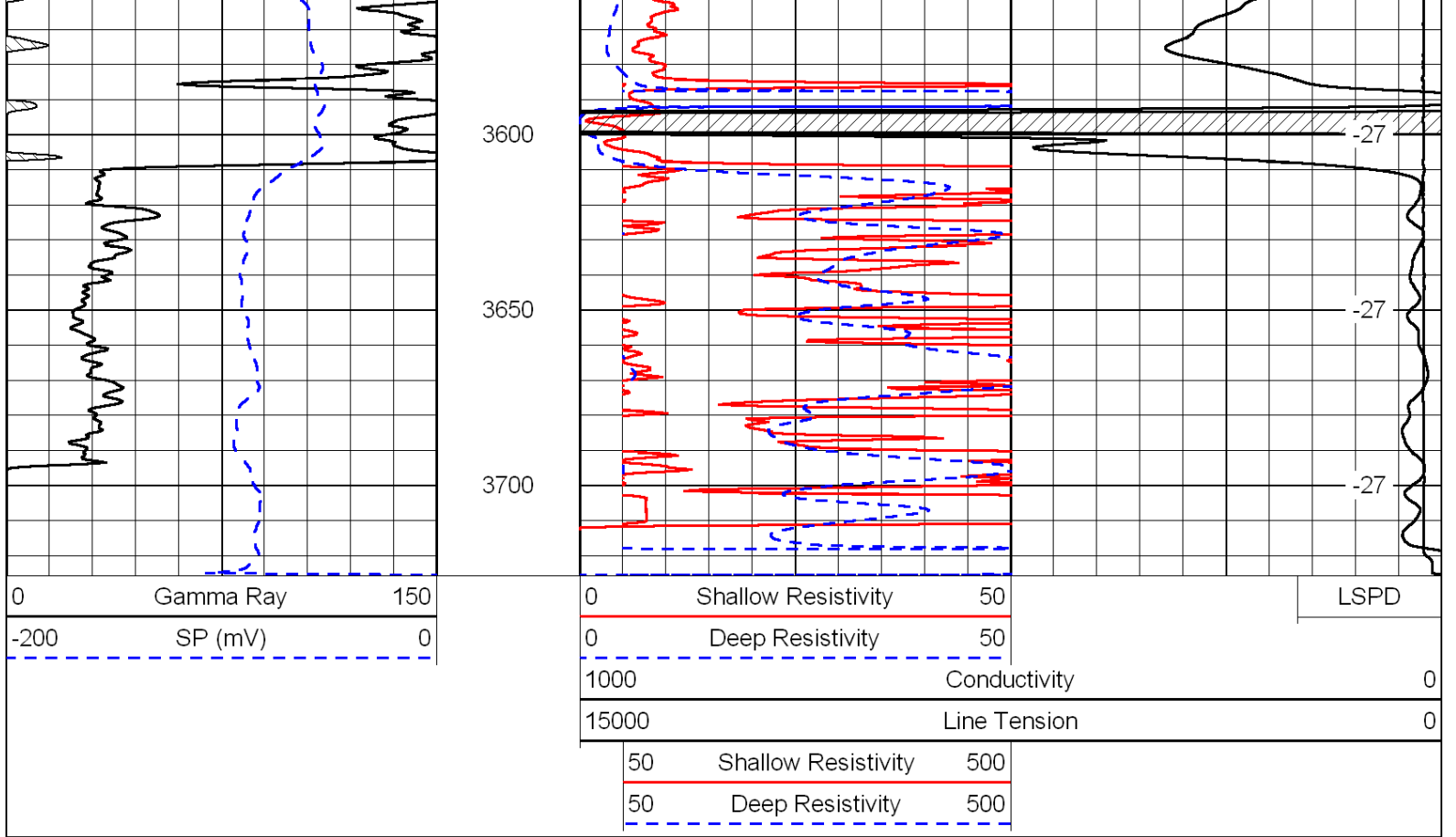


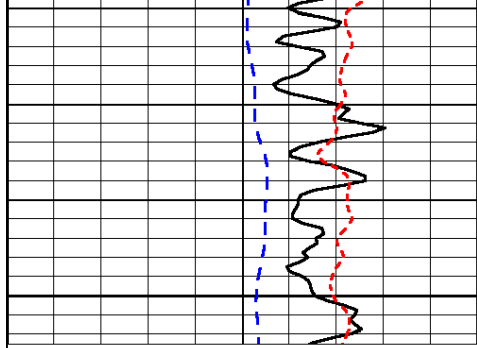






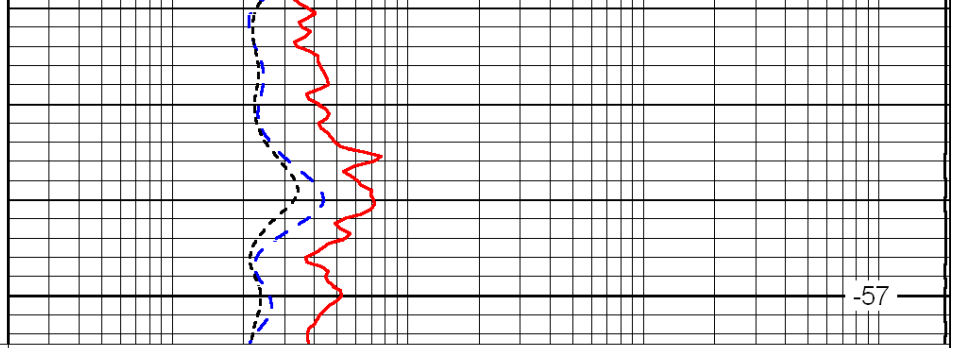
-33
-33
-33
-32
-33
-32
-30
-34
-34
-27
-27





0	Gamma Ray	150
-200	SP (mV)	0
-160	Rxo / Rt	40

700



0.2	Deep Resistivity	2000
0.2	Medium Resistivity	2000
0.2	Shallow Resistivity	2000
15000	Line Tension	0

-57

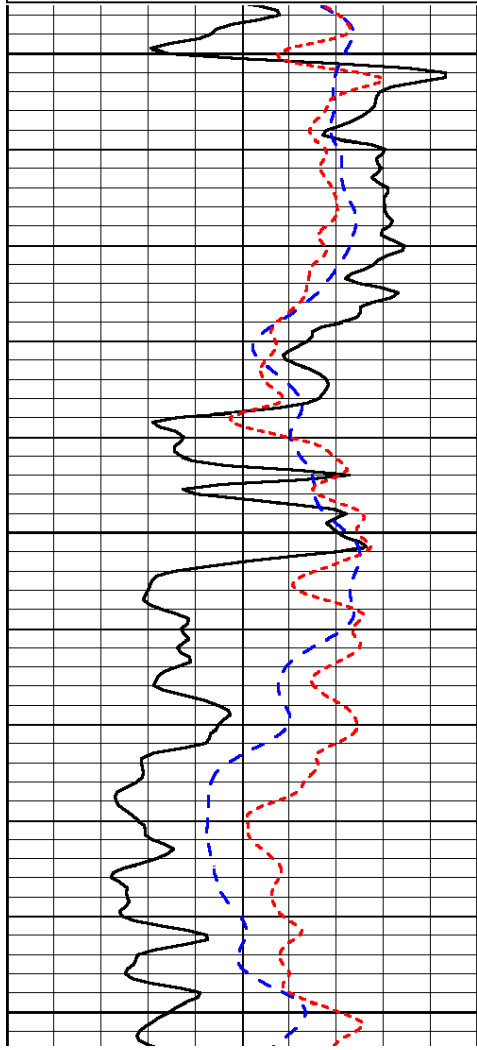
LSPD

Database File: c:\warrior\data\ldrilling_hilda no. 2-3\ldrilling_hilda_2_3hd.db
 Dataset Pathname: dil\ldstck
 Presentation Format: dil
 Dataset Creation: Fri Feb 11 07:32:08 2011
 Charted by: Depth in Feet scaled 1:240

0	Gamma Ray	150
-200	SP (mV)	0
-160	Rxo / Rt	40

0.2	Deep Resistivity	2000
0.2	Medium Resistivity	2000
0.2	Shallow Resistivity	2000
15000	Line Tension	0

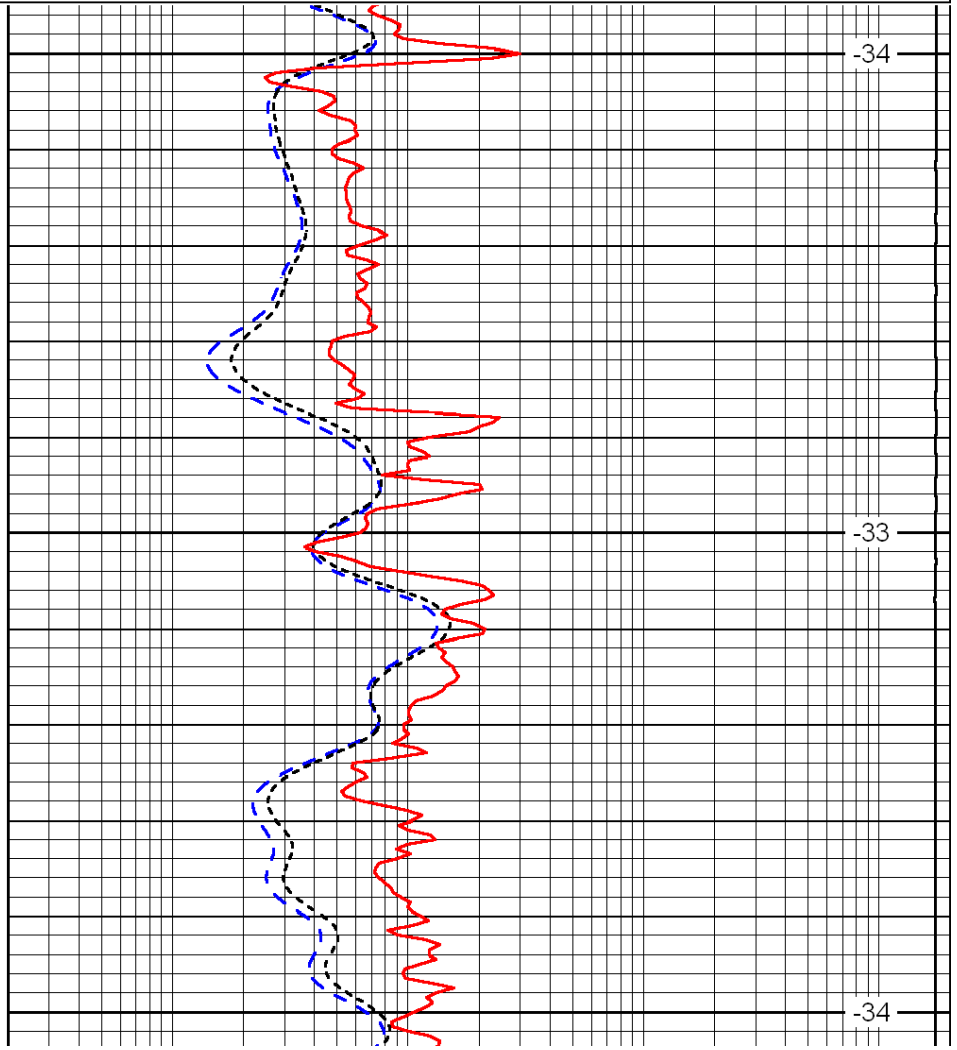
LSPD



2800

2850

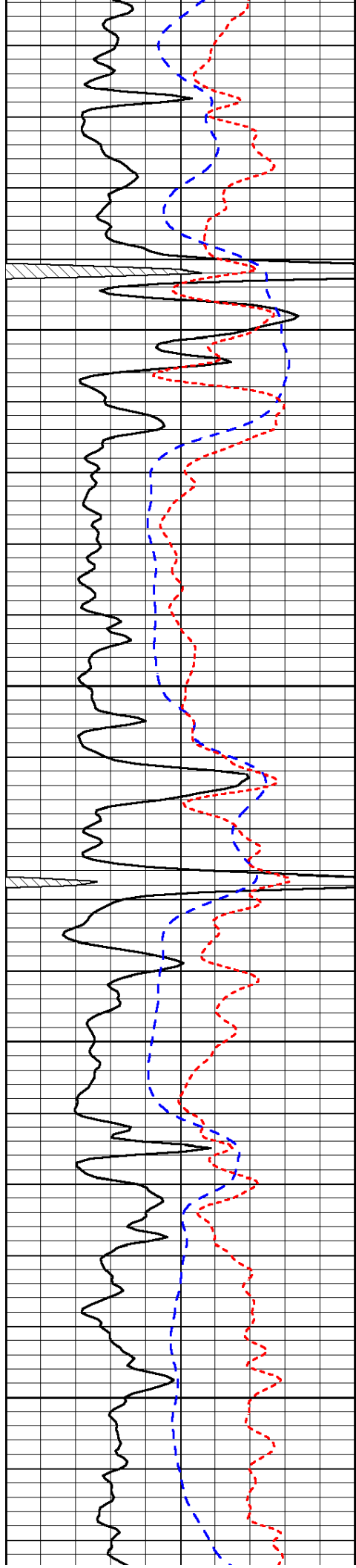
2900



-34

-33

-34

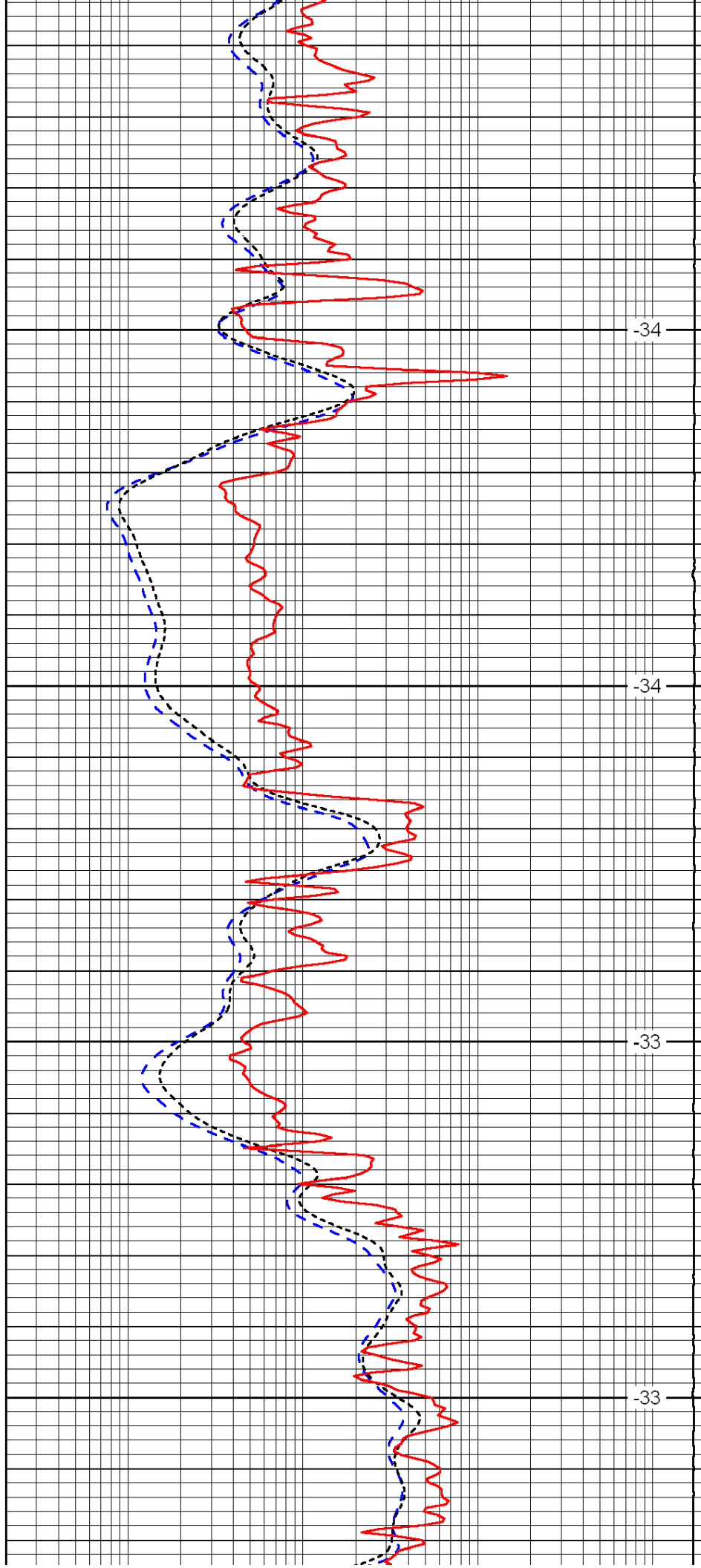


2950

3000

3050

3100

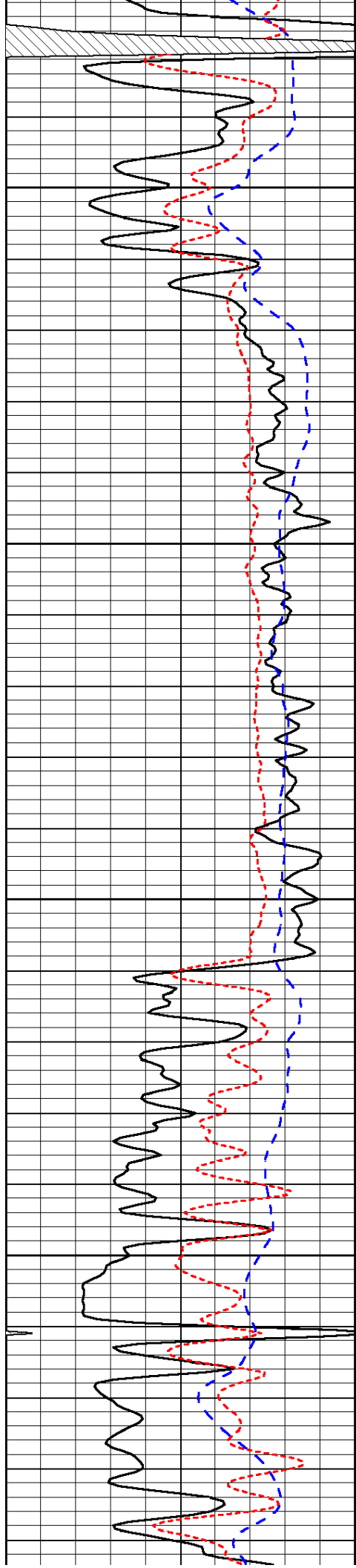


-34

-34

-33

-33

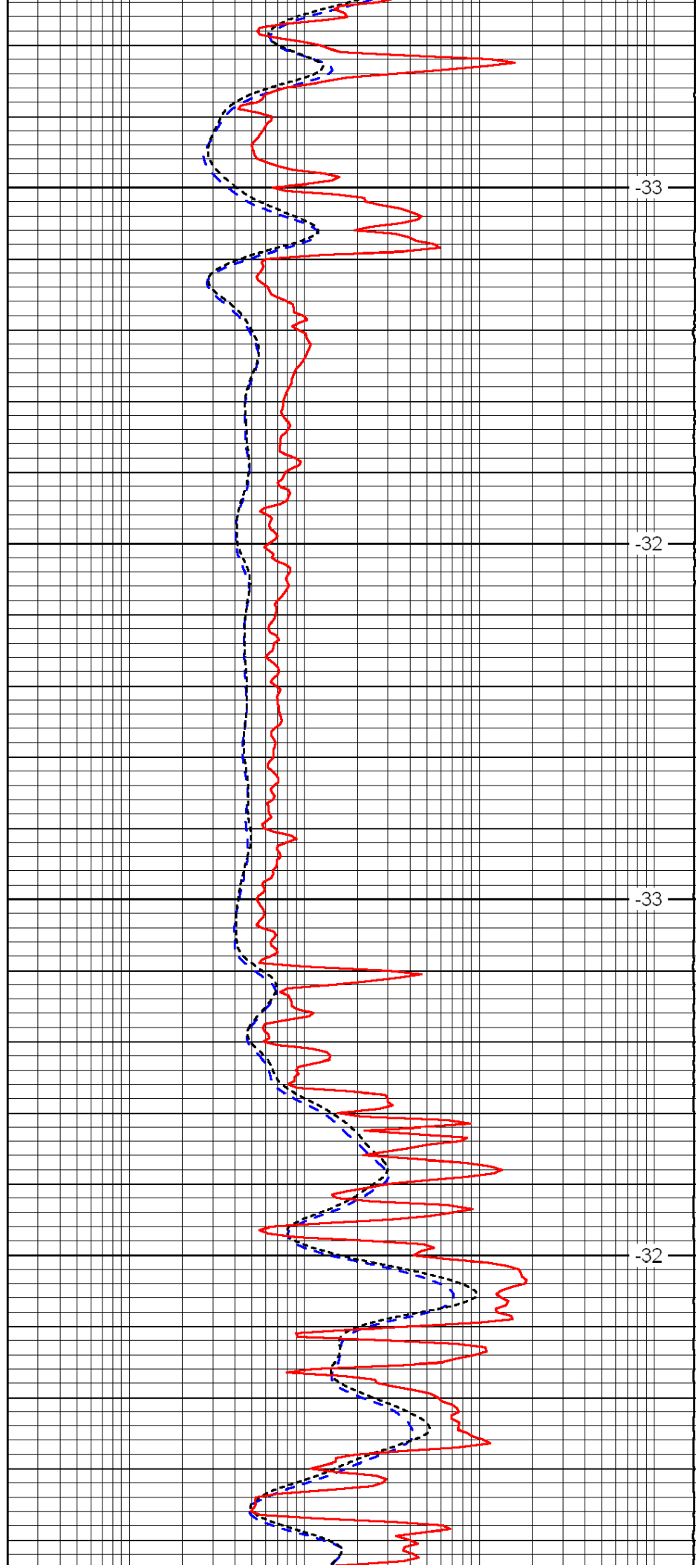


3150

3200

3250

3300

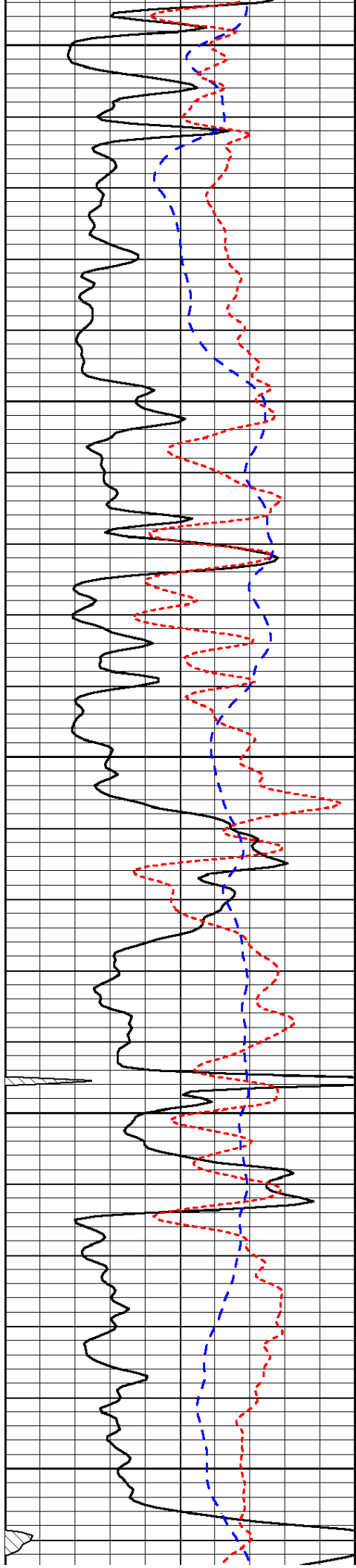


-33

-32

-33

-32



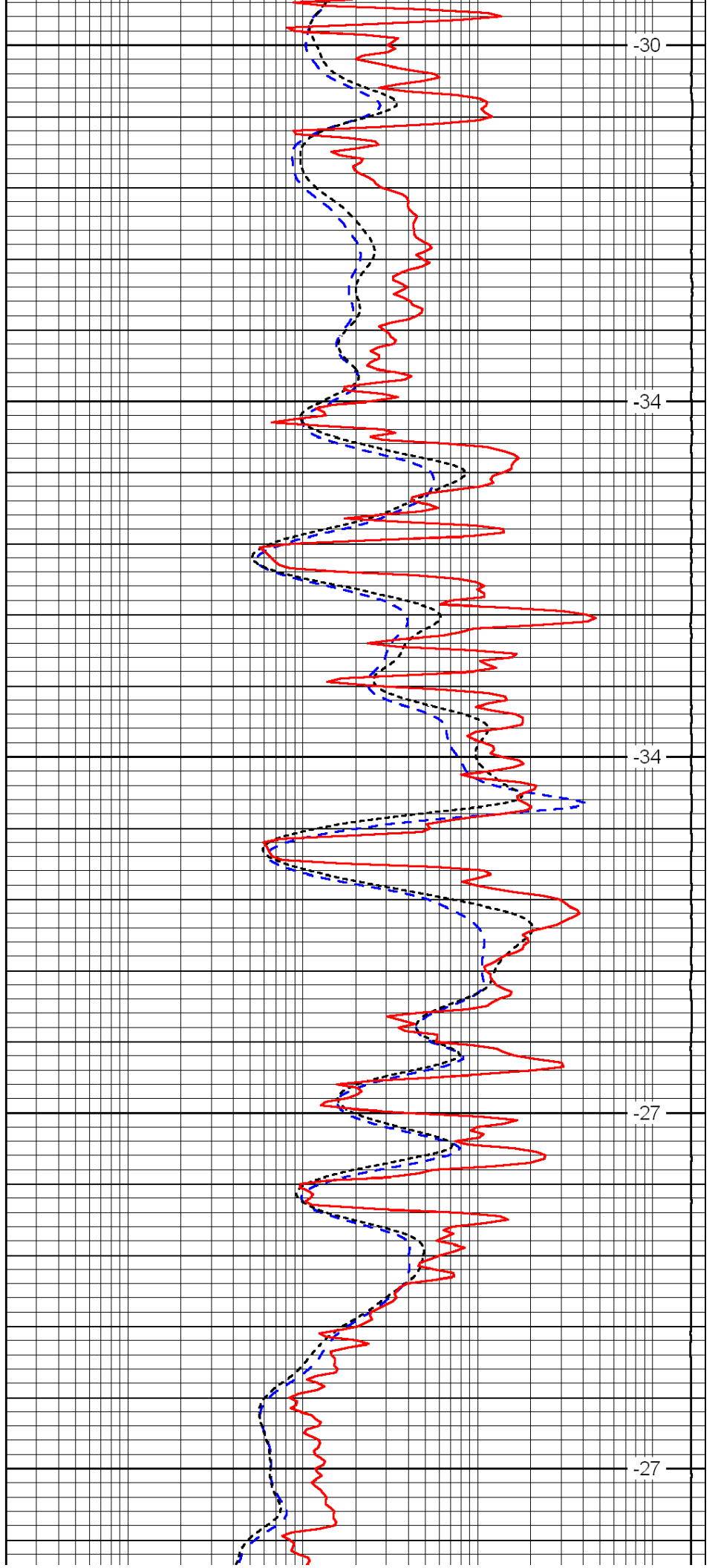
3350

3400

3450

3500

3550



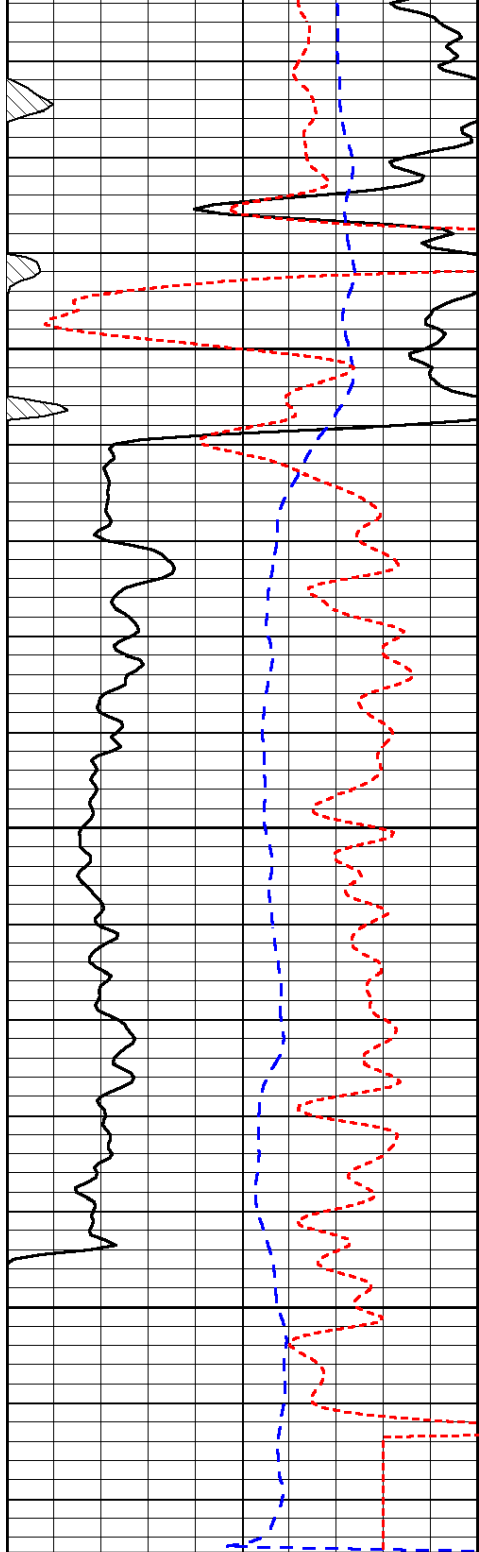
-30

-34

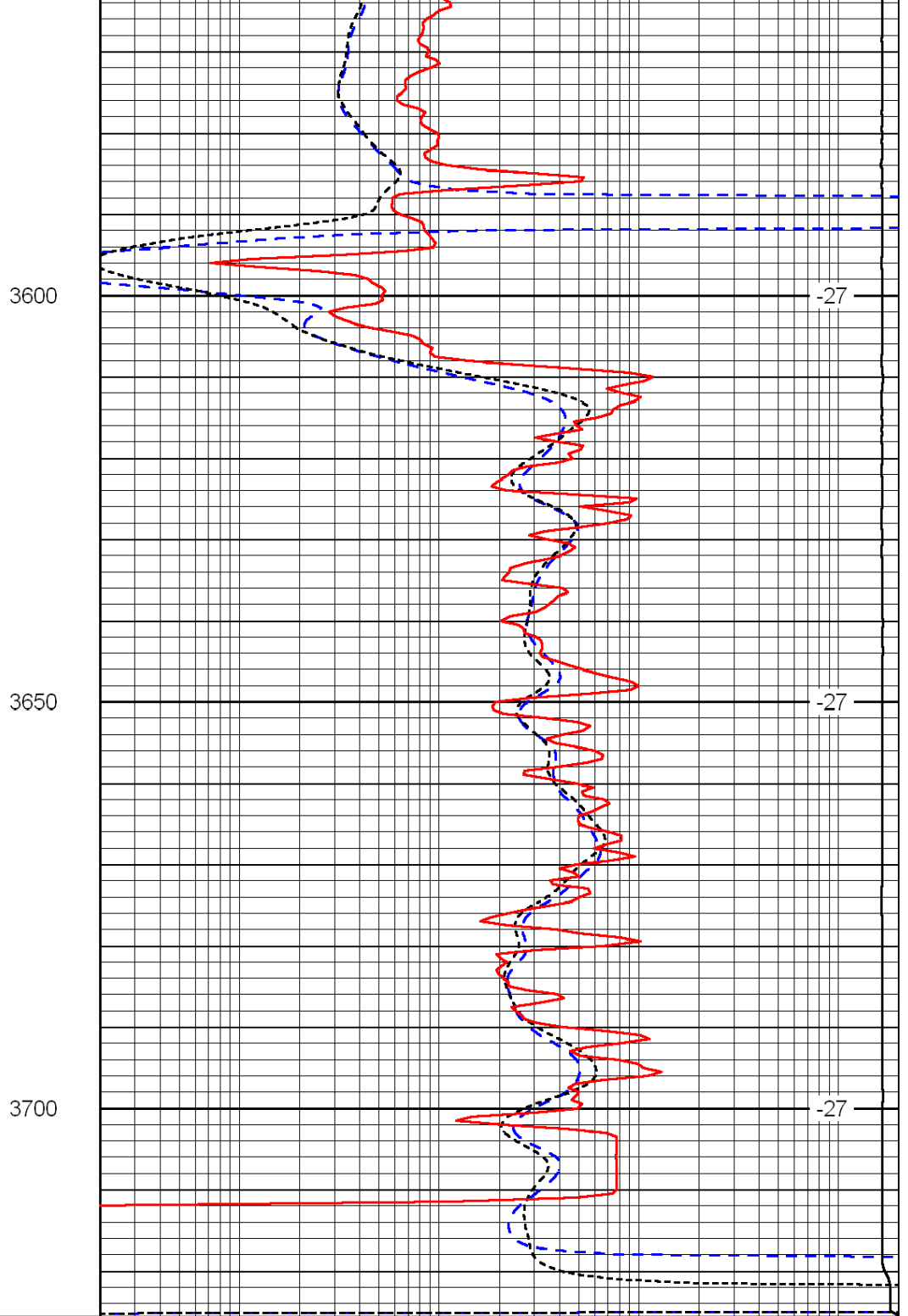
-34

-27

-27



0	Gamma Ray	150
-200	SP (mV)	0
-160	Rxo / Rt	40



0.2	Deep Resistivity	2000
0.2	Medium Resistivity	2000
0.2	Shallow Resistivity	2000
15000	Line Tension	0

LSPD