



Microresistivity Log

DIGITAL LOG (785) 625-3858

API No.	15-185-23,648-00-00		
Company	L.D. Drilling, Inc.		
Well	Hilda No. 2-3		
Field	Max		
County	Stafford	State	Kansas
Location	NW/NW/NW/NE 276' FNL & 2,563' FEL		
Sec: 3	Twp: 22S	Rge: 12W	Other Services CNL/CDL DIL

Permanent Datum	Ground Level	Elevation	1852
Log Measured From	Kelly Bushing	9	Ft. Above Perm. Datum
Drilling Measured From	Kelly Bushing		
Date	2/11/2011		
Run Number	Two		
Depth Driller	3720		
Depth Logger	3720		
Bottom Logged Interval	3719		
Top Log Interval	2800		
Casing Driller	8.625 @ 350		
Casing Logger	348		
Bit Size	7.875		
Type Fluid in Hole	Chemical		
Salinity, ppm CL	5800		
Density / Viscosity	9.3	50	
pH / Fluid Loss	10.4	9.0	
Source of Sample	Flowline		
Rm @ Meas. Temp	.31	@	42
Rmf @ Meas. Temp	.23	@	42
Rmc @ Meas. Temp	.42	@	42
Source of Rmf / Rmc	Charts		
Rm @ BHT	.12	@	113
Operating Rig Time	4 Hours		
Max Rec. Temp. F	113		
Equipment Number	10		
Location	Hays		
Recorded By	J. Long		
Witnessed By	Jim Musgrove		

<<< Fold Here >>>

All interpretations are opinions based on inferences from electrical or other measurements and we cannot and do not guarantee the accuracy or correctness of any interpretation, and we shall not, except in the case of gross or willful negligence on our part, be liable or responsible for any loss, costs, damages, or expenses incurred or sustained by anyone resulting from any interpretation made by any of our officers, agents or employees. These interpretations are also subject to our general terms and conditions set out in our current Price Schedule.

Comments

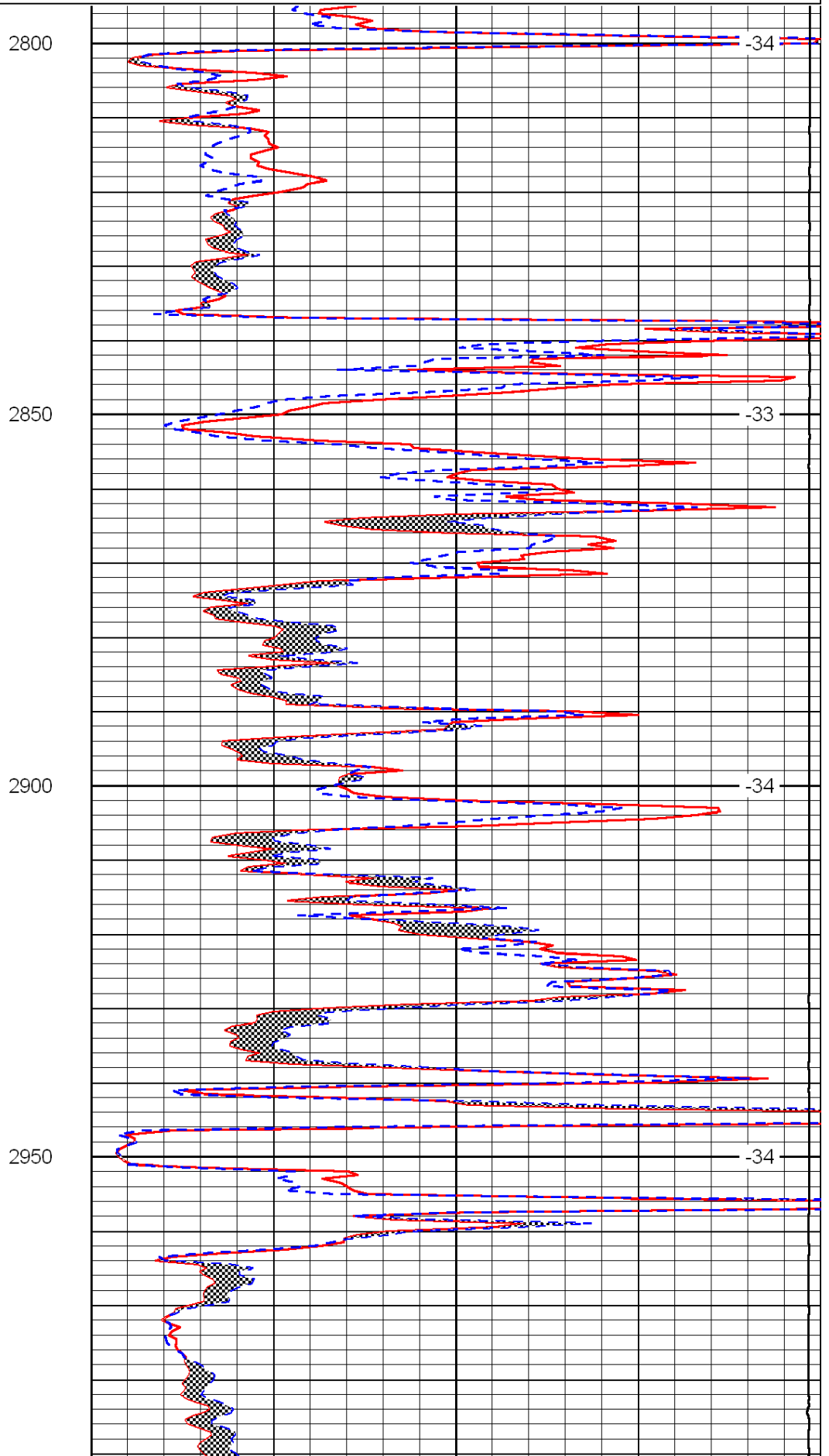
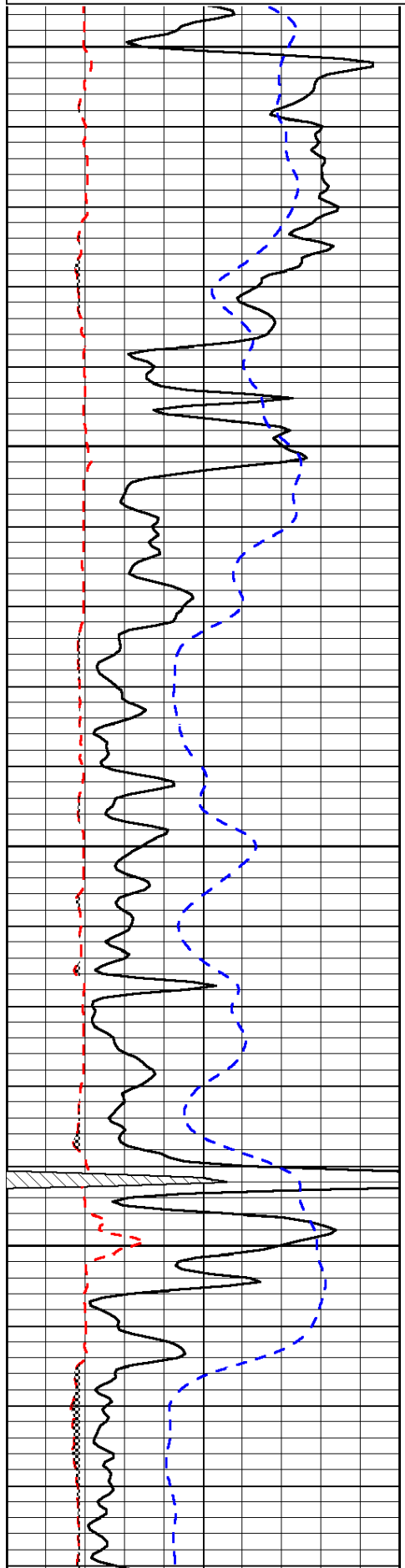
Thank you for using Log-Tech, Inc.
(785) 625-3858

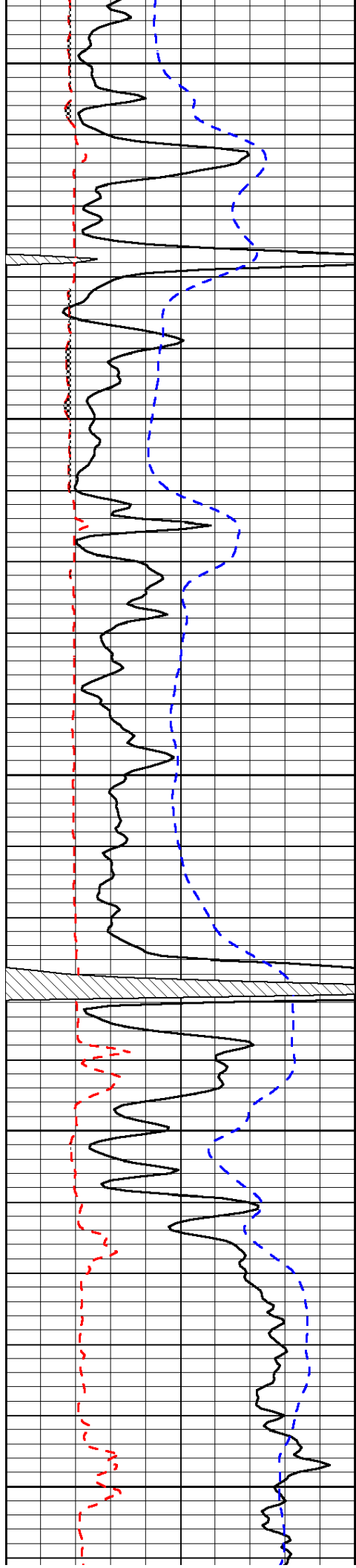
Ike & Joe's, 1 North, 1 1/2 West, South Into

0	Gamma Ray	150
6	Micro Log Caliper (GAPI)	16
-200	SP (mV)	0

0	Micro Inverse 1 X 1	40
0	Micro Normal 2"	40
15000	Line Weight	0

LSPD





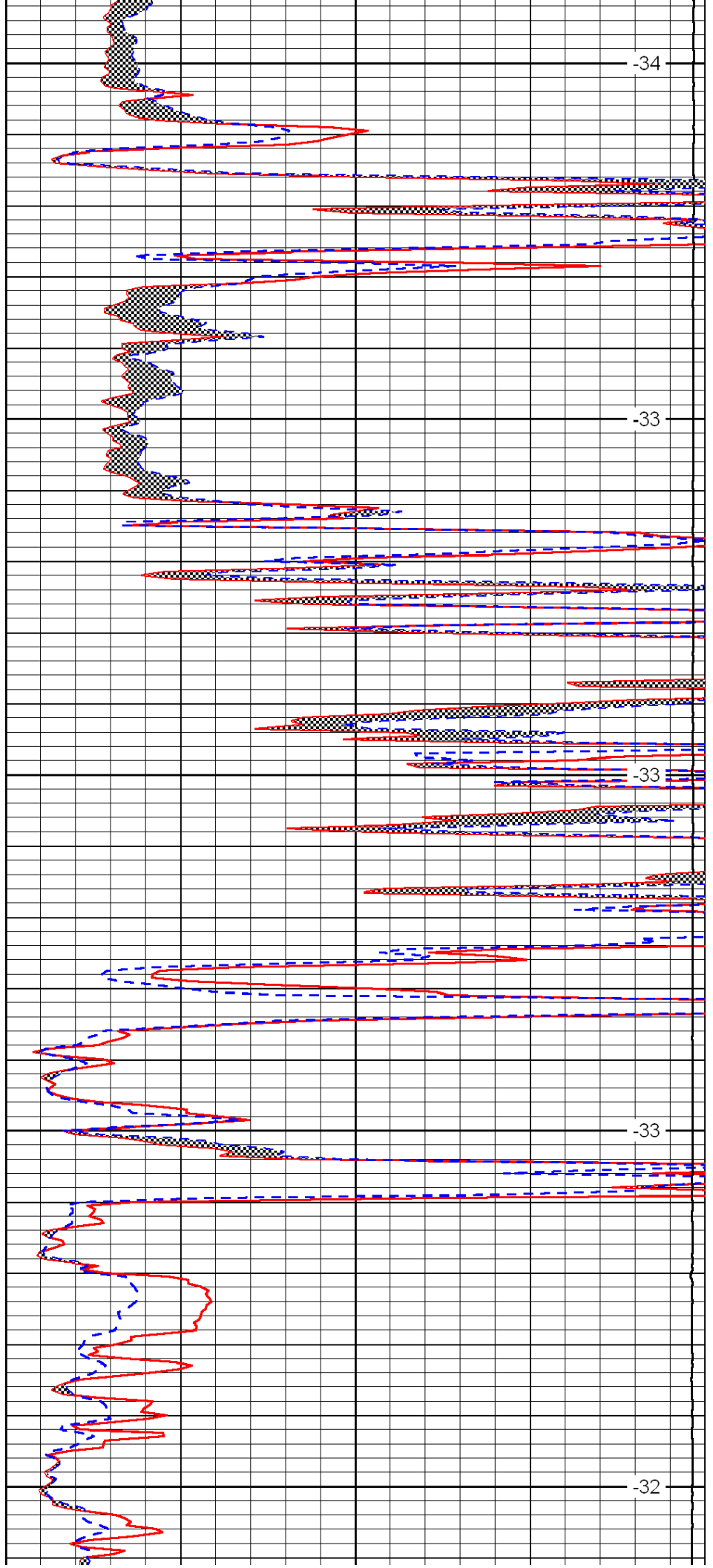
3000

3050

3100

3150

3200



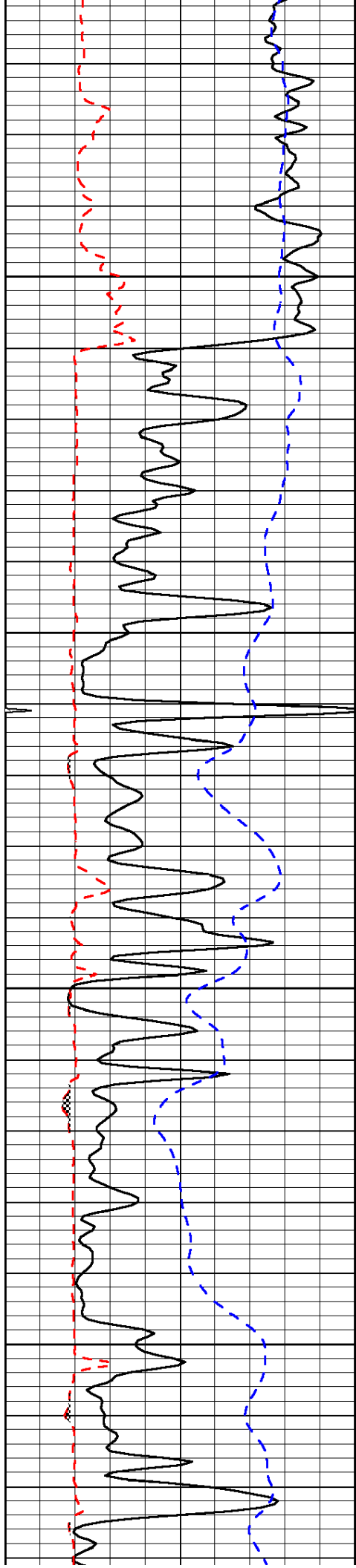
-34

-33

-33

-33

-32

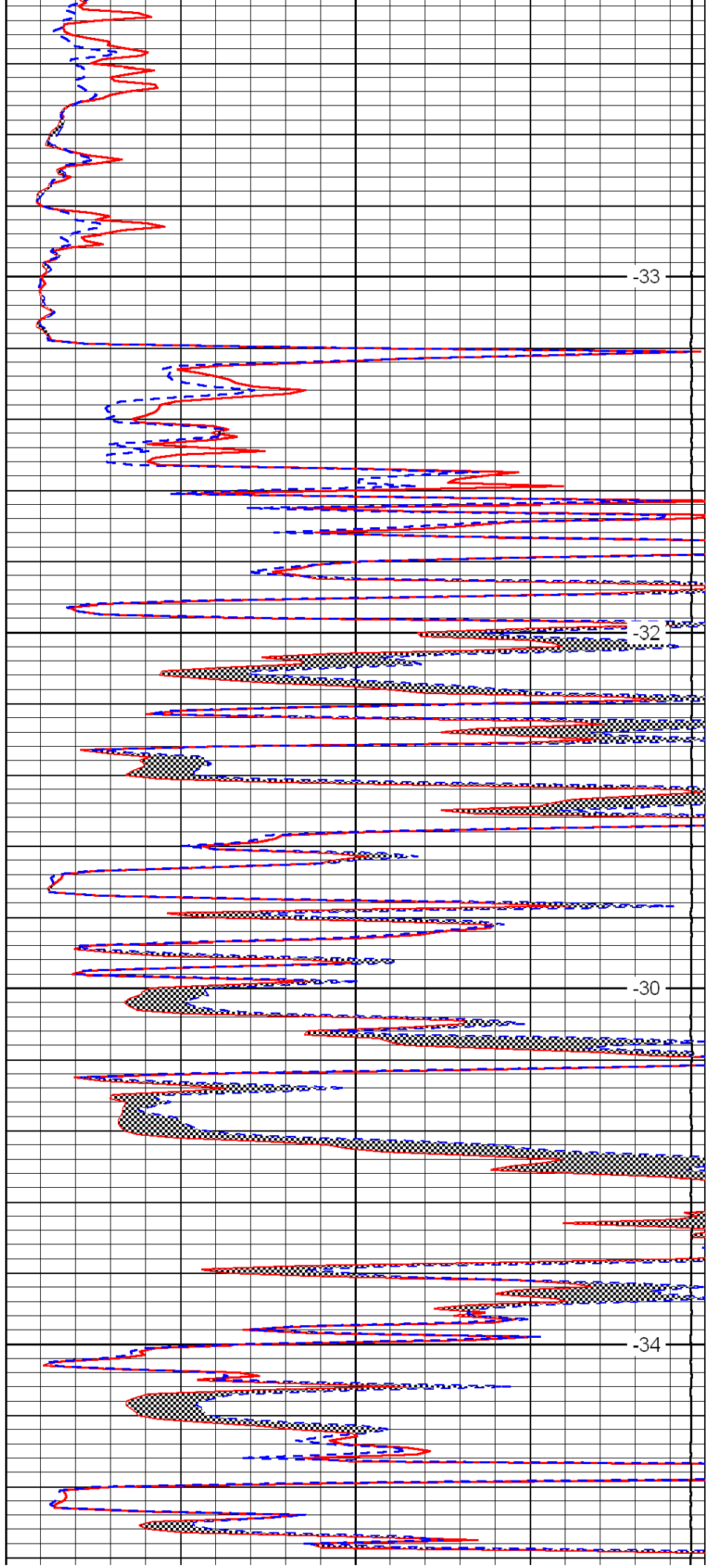


3250

3300

3350

3400

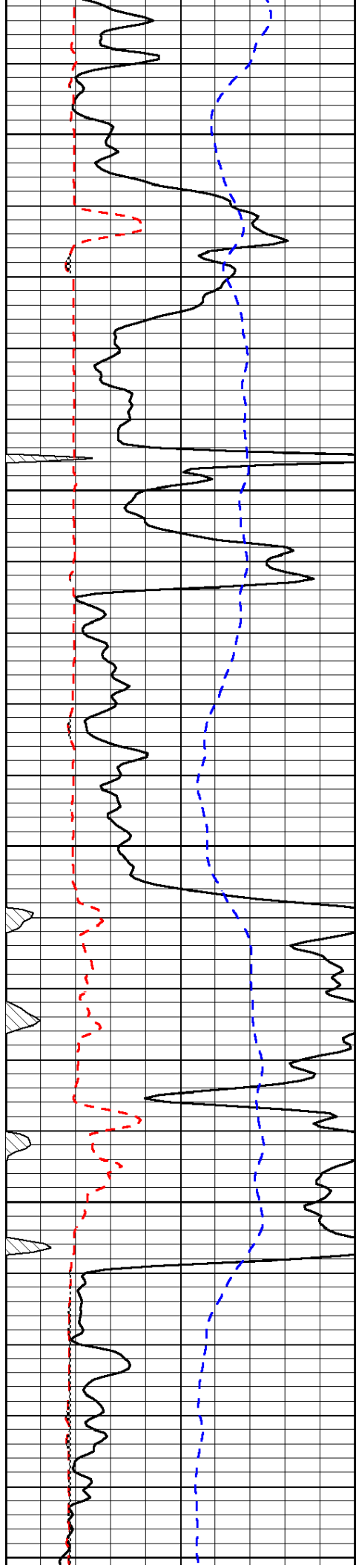


-33

-32

-30

-34



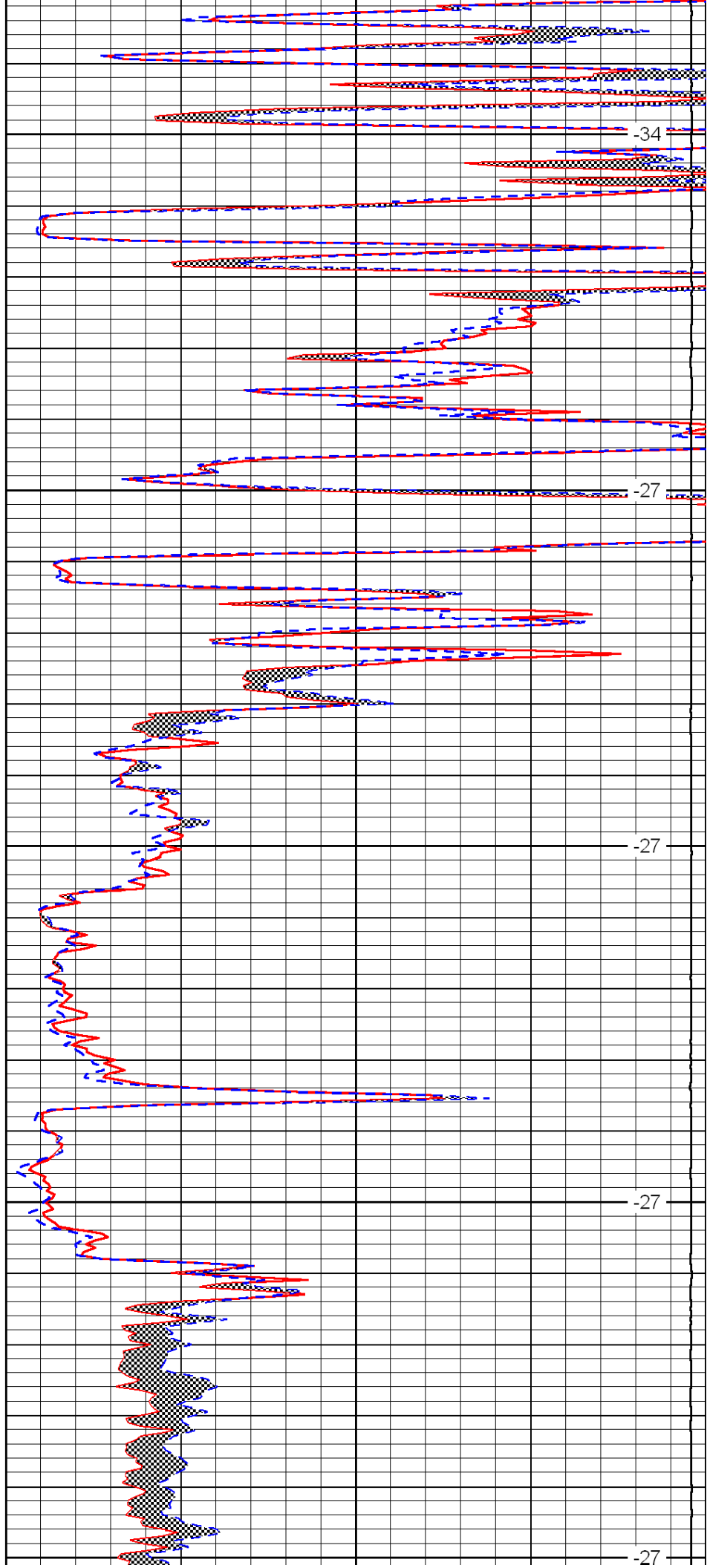
3450

3500

3550

3600

3650



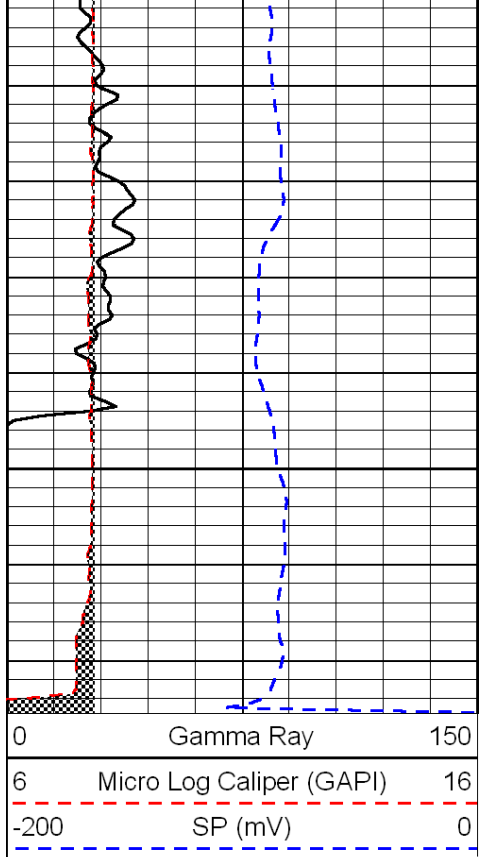
-34

-27

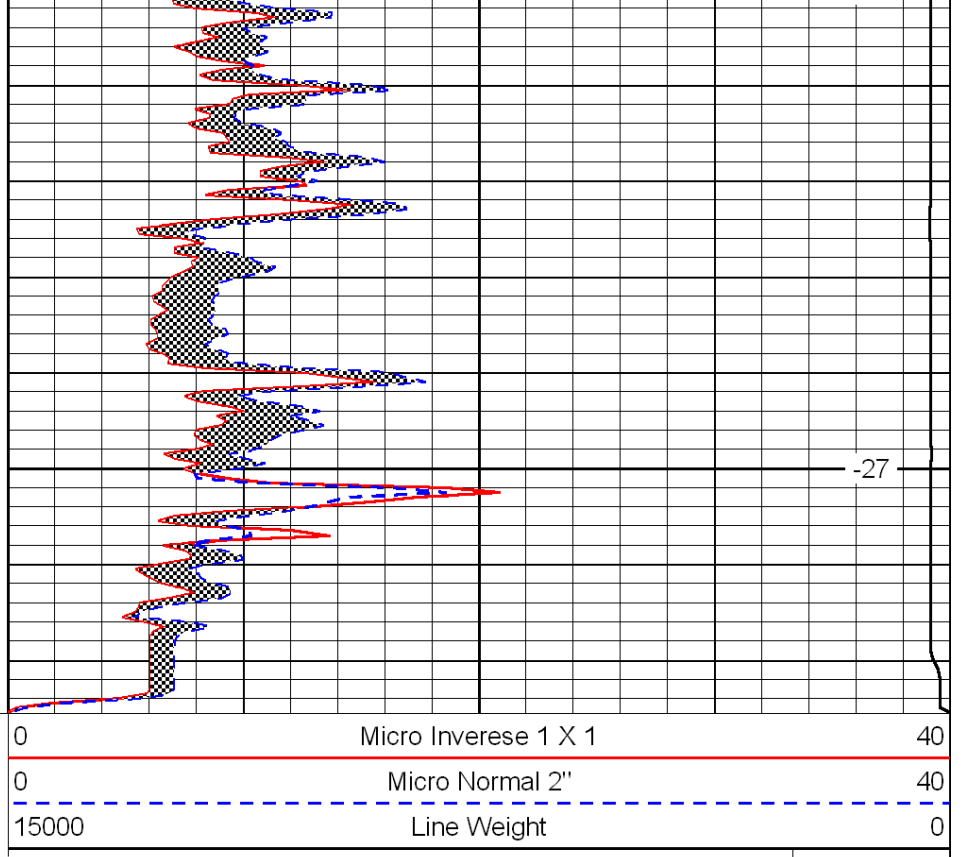
-27

-27

-27



3700



-27

LSPD