



# Dual Compensated Porosity Log

DIGITAL LOG (785) 625-3858

API No. 15-185-23,648-00-00

Company L.D. Drilling, Inc.  
Well Hilda No. 2-3  
Field Max  
County Stafford State Kansas

Location NW/NW/NW/NE  
276' FNL & 2,563' FEL

Sec: 3 Twp: 22S Rge: 12W

Other Services  
DIL  
MEL

Permanent Datum Ground Level Elevation 1852  
Log Measured From Kelly Bushing 9 Ft. Above Perm. Datum  
Drilling Measured From Kelly Bushing

K.B. 1861  
D.F. 1852  
G.L. 1852

Date 2/11/2011

Run Number One

Type Log CNL / CDL

Depth Driller 3720

Depth Logger 3720

Bottom Logged Interval 3699

Top Logged Interval 2800

Type Fluid In Hole Chemical

Salinity, PPM CL 5800

Density 9.3

Level Full

Max. Rec. Temp. F 113

Operating Rig Time 4 Hours

Equipment -- Location 10 Days

Recorded By J. Long

Witnessed By Jim Musgrove

Borehole Record				Casing Record			
Run No.	Bit	From	To	Size	Wgt.	From	To
1	12.25	00	350	8.625	24#	00	350
2	7.875	350	3720				

<<< Fold Here >>>

All interpretations are opinions based on inferences from electrical or other measurements and we cannot and do not guarantee the accuracy or correctness of any interpretation, and we shall not, except in the case of gross or willful negligence on our part, be liable or responsible for any loss, costs, damages, or expenses incurred or sustained by anyone resulting from any interpretation made by any of our officers, agents or employees. These interpretations are also subject to our general terms and conditions set out in our current Price Schedule.

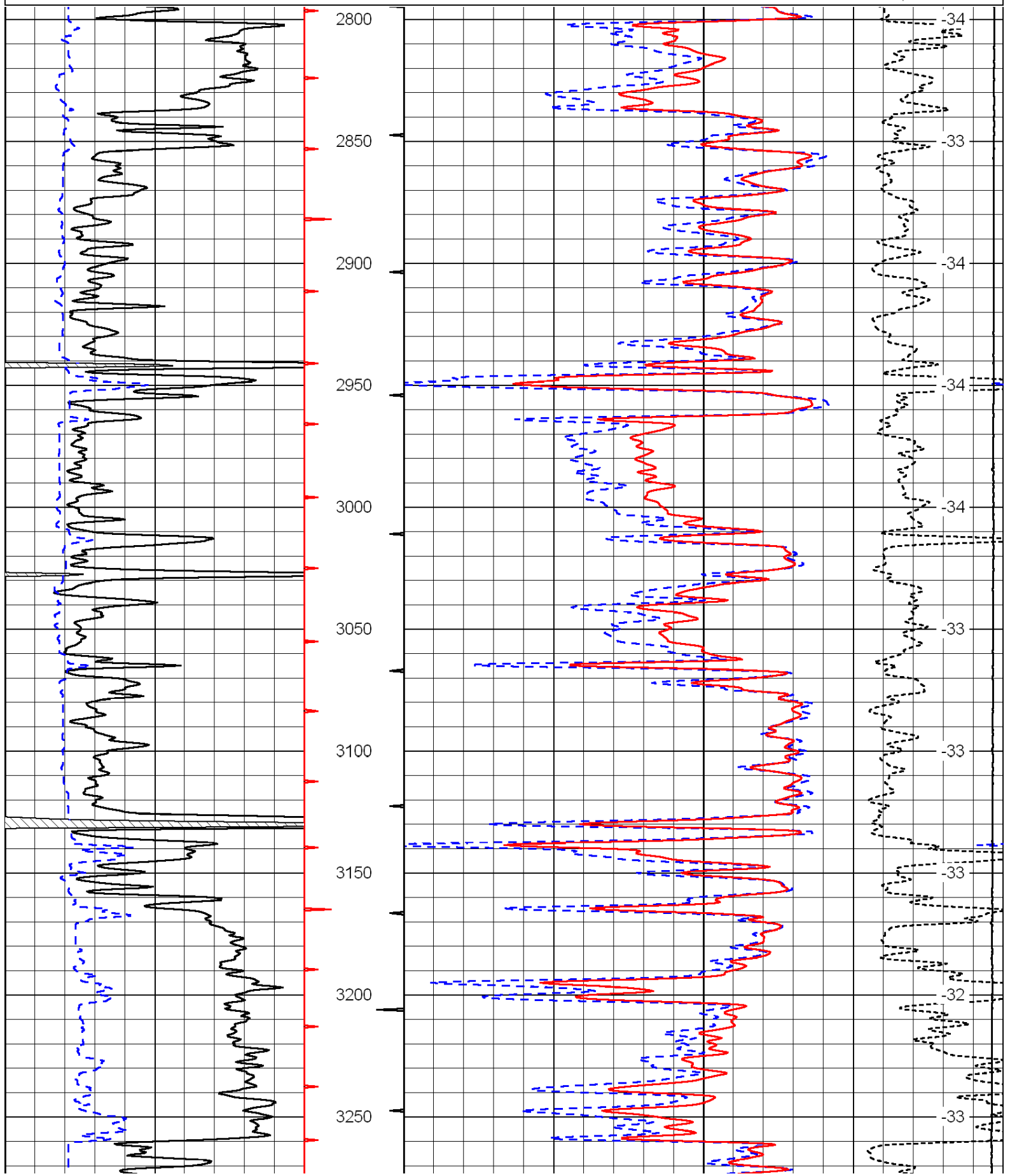
Comments

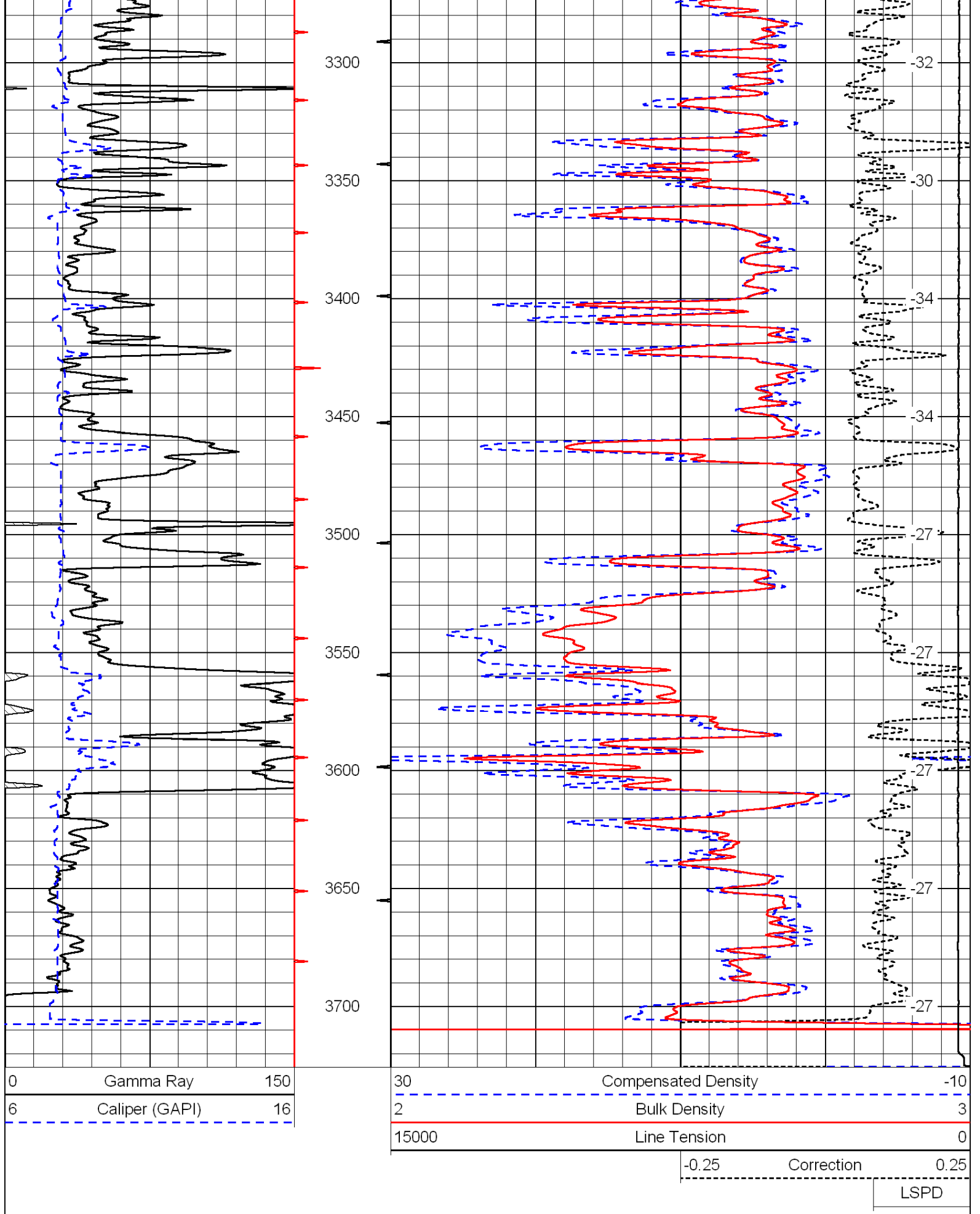
Thank you for using Log-Tech, Inc.  
(785) 625-3858

Ike & Joe's, 1 North, 1 1/2 West, South Into

0	Gamma Ray	150
6	Caliper (GAPI)	16

30	Compensated Density	-10
2	Bulk Density	3
15000	Line Tension	0
-0.25	Correction	0.25
LSPD		





0	Gamma Ray	150
6	Caliper (GAPI)	16

30	Compensated Neutron (Limestone)	-10
30	Compensated Density (2.71 ma)	-10
15000	Line Tension	0
-0.25	Correction	0.25
LSPD		

