



**DIGITAL LOG** (785) 625-3858

**Dual Induction Log**

API No.	15-165-21,887-00-00		
Company	American Warrior, Inc.		
Well	Baus No. 1-30		
Field	Schadel Northeast		
County	Rush	State	Kansas
Location	960' FSL & 1375' FWL		
Sec:	30	Twp:	19 S Rge: 20 W
Other Services	CNL/CDL		
Elevation	K.B. 2300 D.F. 2294 G.L. 2294		

Permanent Datum	Ground Level	Elevation	2294
Log Measured From	Kelly Bushing	6	Ft. Above Perm. Datum
Drilling Measured From	Kelly Bushing		
Date	7/17/2010		
Run Number	One		
Depth Driller	4434		
Depth Logger	4430		
Bottom Logged Interval	4429		
Top Log Interval	200		
Casing Driller	8.625 @ 222		
Casing Logger	218		
Bit Size	7.875		
Type Fluid in Hole	Chemical		
Salinity, ppm CL	7.000		
Density / Viscosity	9.0	58	
pH / Fluid Loss	10.0	12.0	
Source of Sample	Flowline		
Rm @ Meas. Temp	.68	@	92
Rmf @ Meas. Temp	.51	@	92
Rmc @ Meas. Temp	.92	@	92
Source of Rmf / Rmc	Charts		
Rm @ BHT	.51	@	122
Operating Rig Time	3 1/2 Hours		
Max Rec. Temp. F	122		
Equipment Number	4		
Location	Hays		
Recorded By	K. Bange		
Witnessed By	Scott Corsair		

<<< Fold Here >>>

All interpretations are opinions based on inferences from electrical or other measurements and we cannot and do not guarantee the accuracy or correctness of any interpretation, and we shall not, except in the case of gross or willful negligence on our part, be liable or responsible for any loss, costs, damages, or expenses incurred or sustained by anyone resulting from any interpretation made by any of our officers, agents or employees. These interpretations are also subject to our general terms and conditions set out in our current Price Schedule.

**Comments**

Thank you for using Log-Tech, Inc.  
 (785) 625-3858  
  
 Alexander, 7 S to X rd, 1 1/2 W, N 1/4, W into

Database File: c:\warrior\data\amwar\_baus no. 1-30\awarhd.db  
 Dataset Pathname: dil\awar2in  
 Presentation Format: dil2in  
 Dataset Creation: Sat Jul 17 04:32:40 2010  
 Charted by: Depth in Feet scaled 1:600

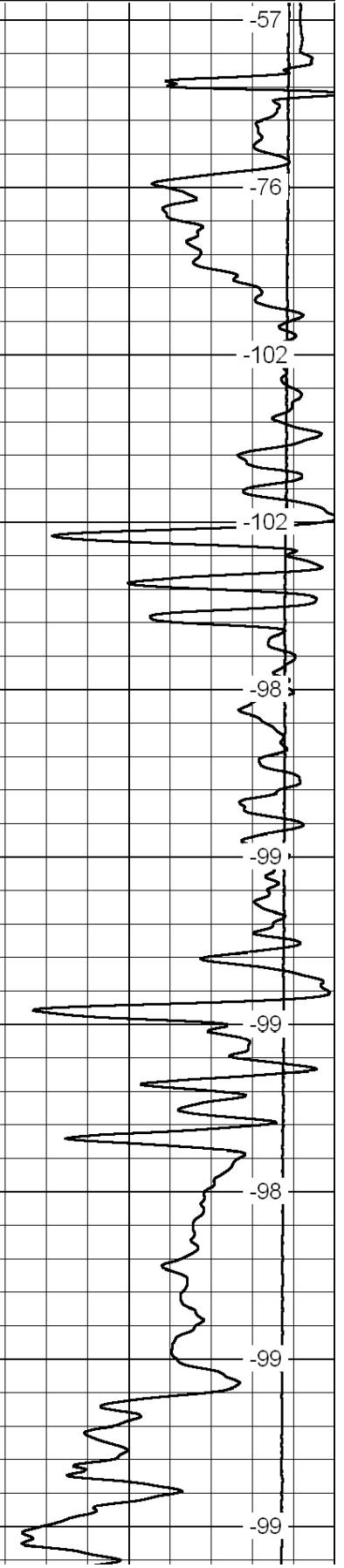
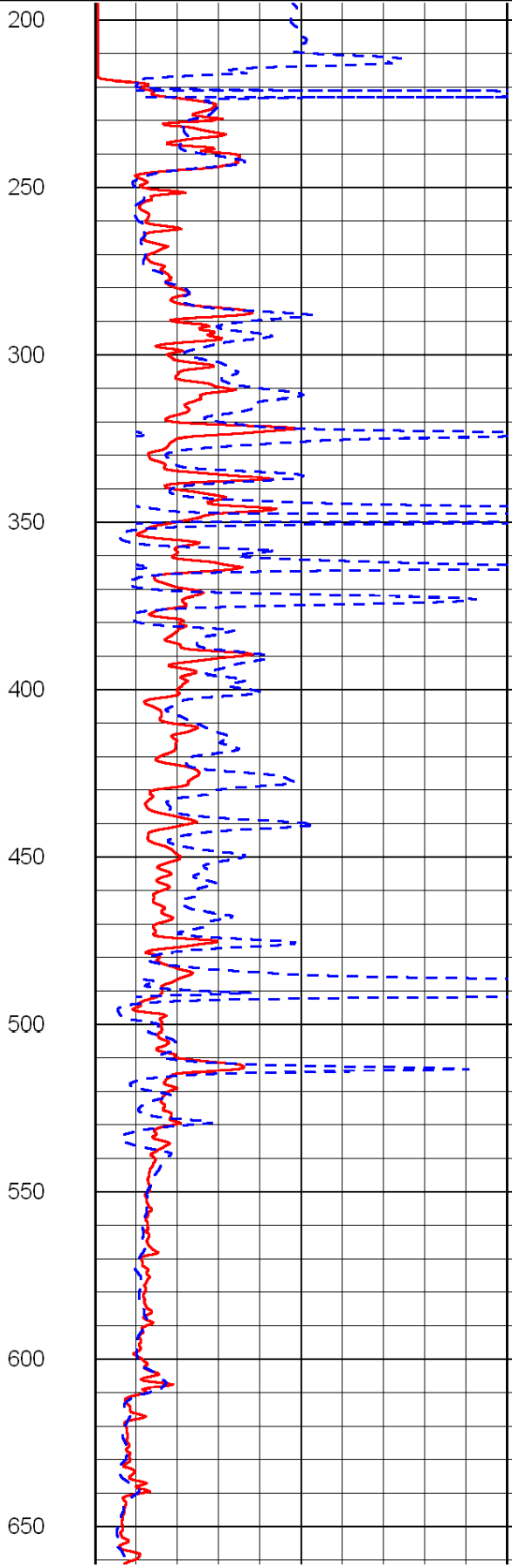
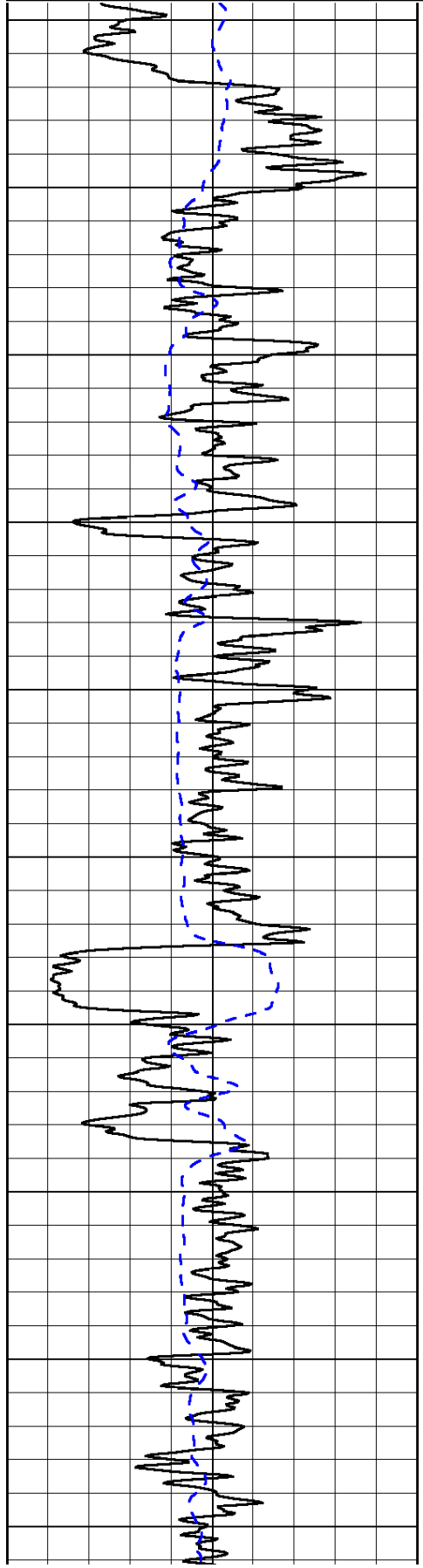
0	Gamma Ray	150
-200	SP (mV)	0

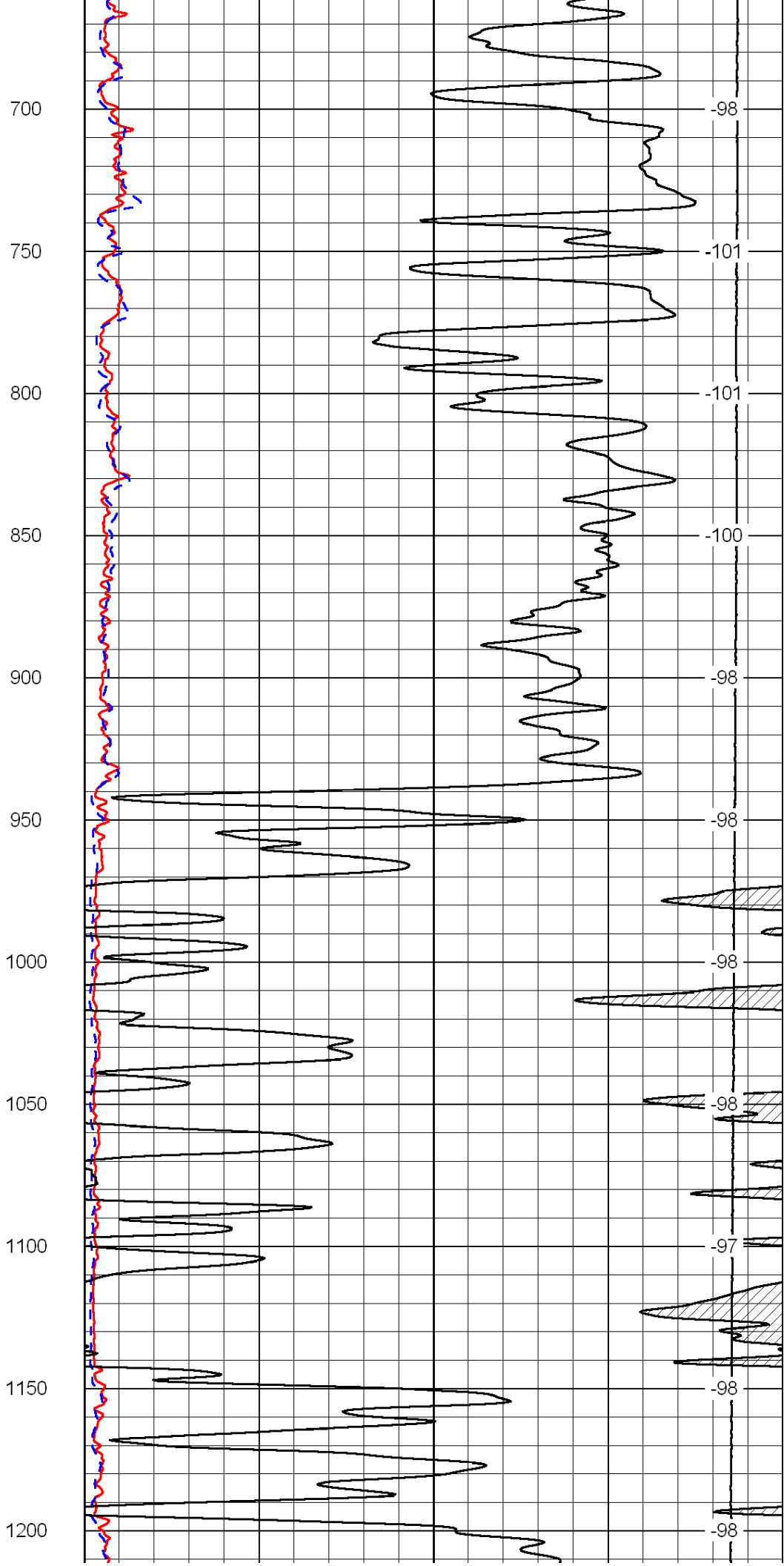
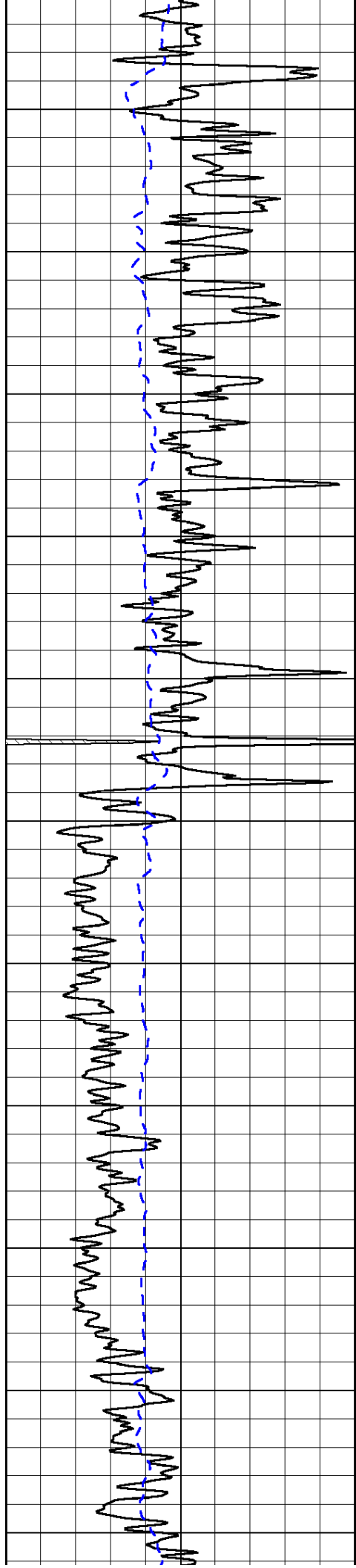
0	Shallow Resistivity	50
0	Deep Resistivity	50

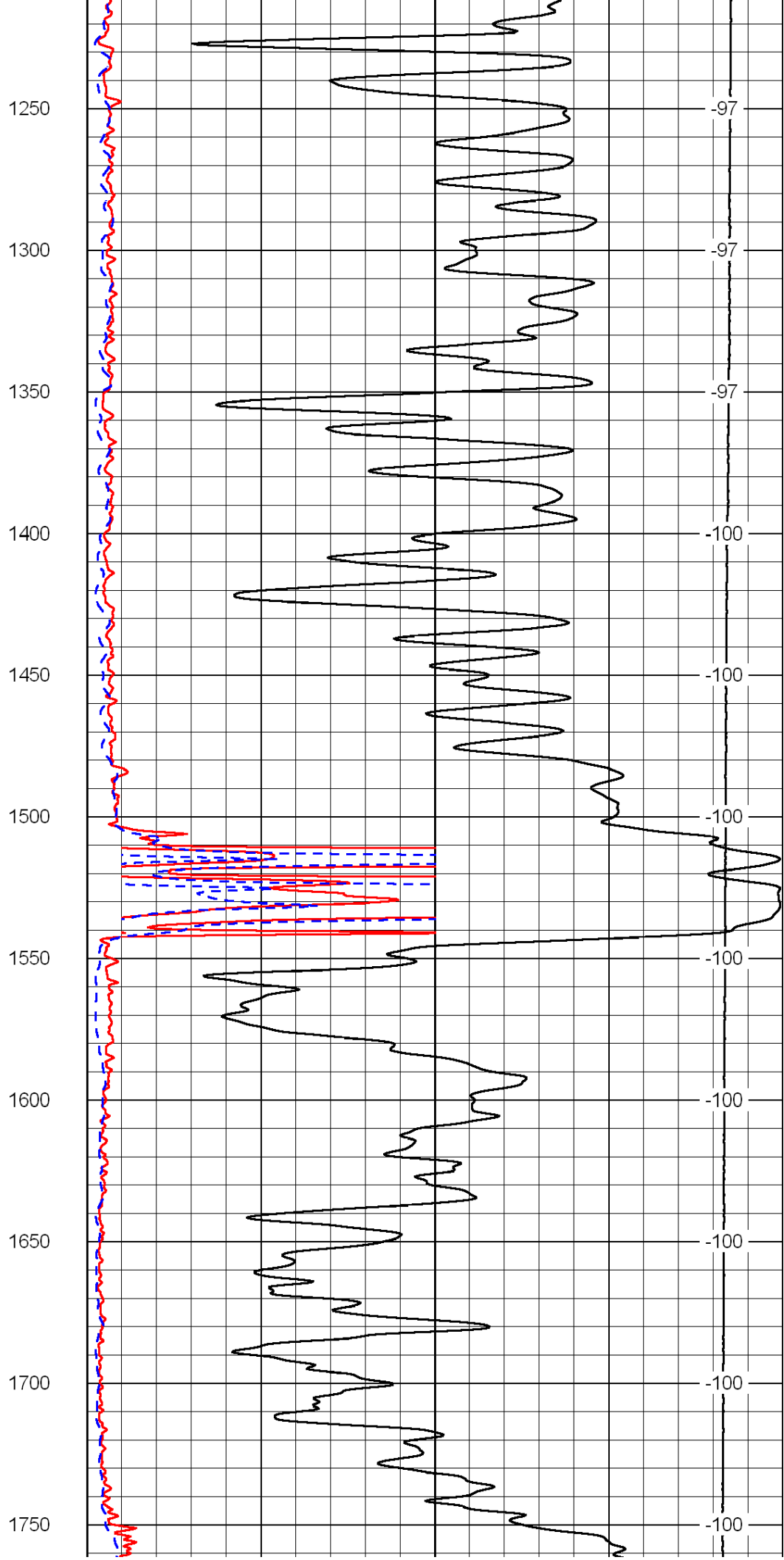
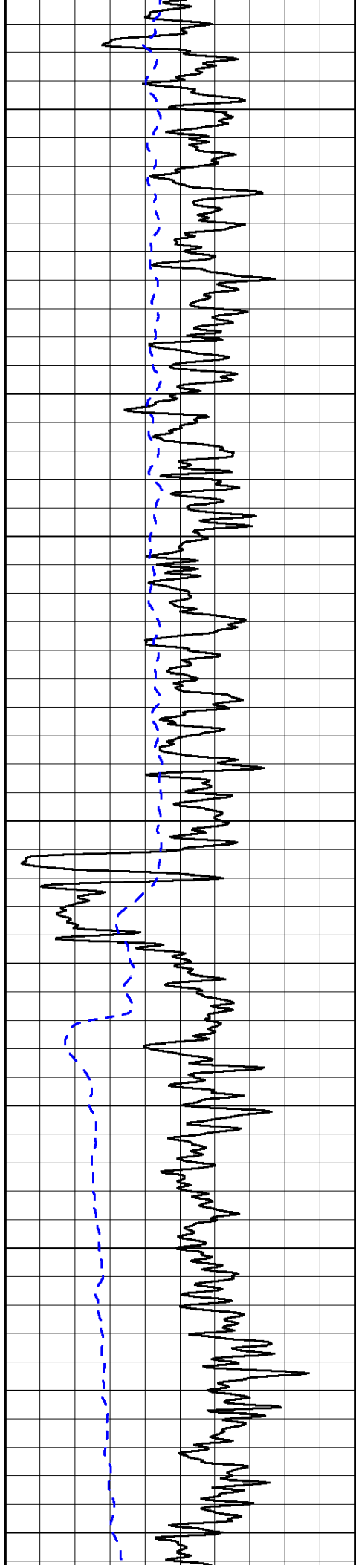
LSPD

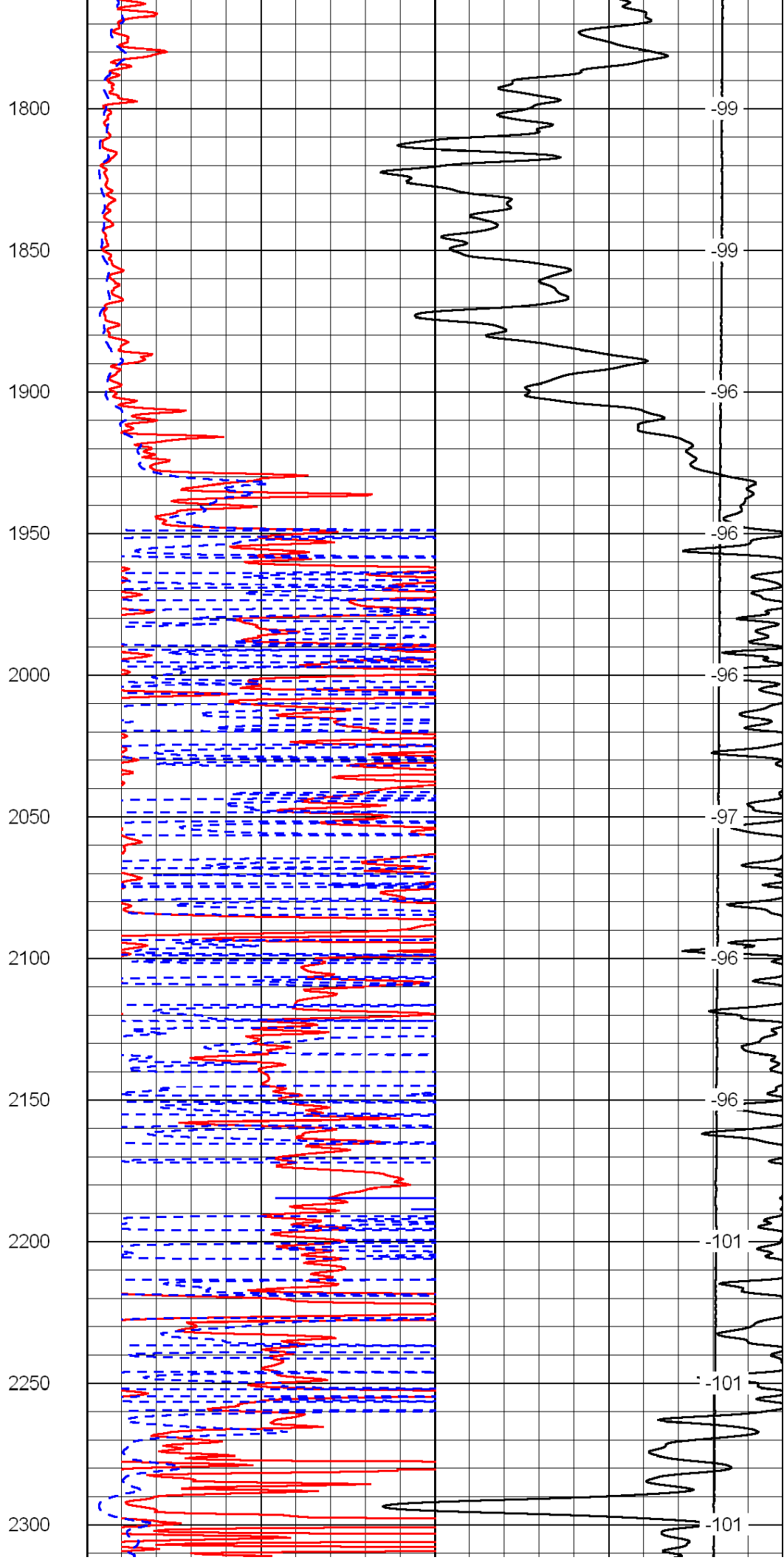
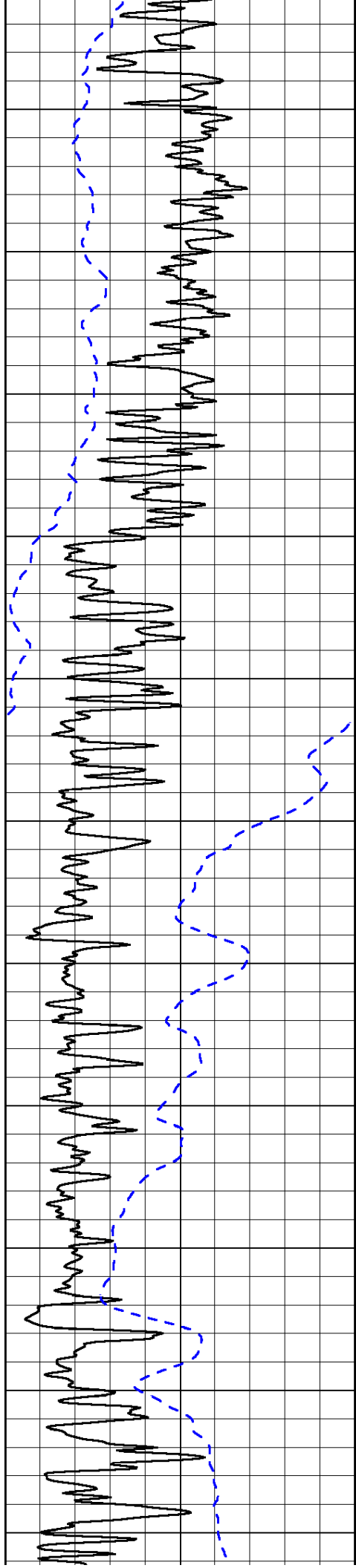
1000	Conductivity	0
15000	Line Tension	0

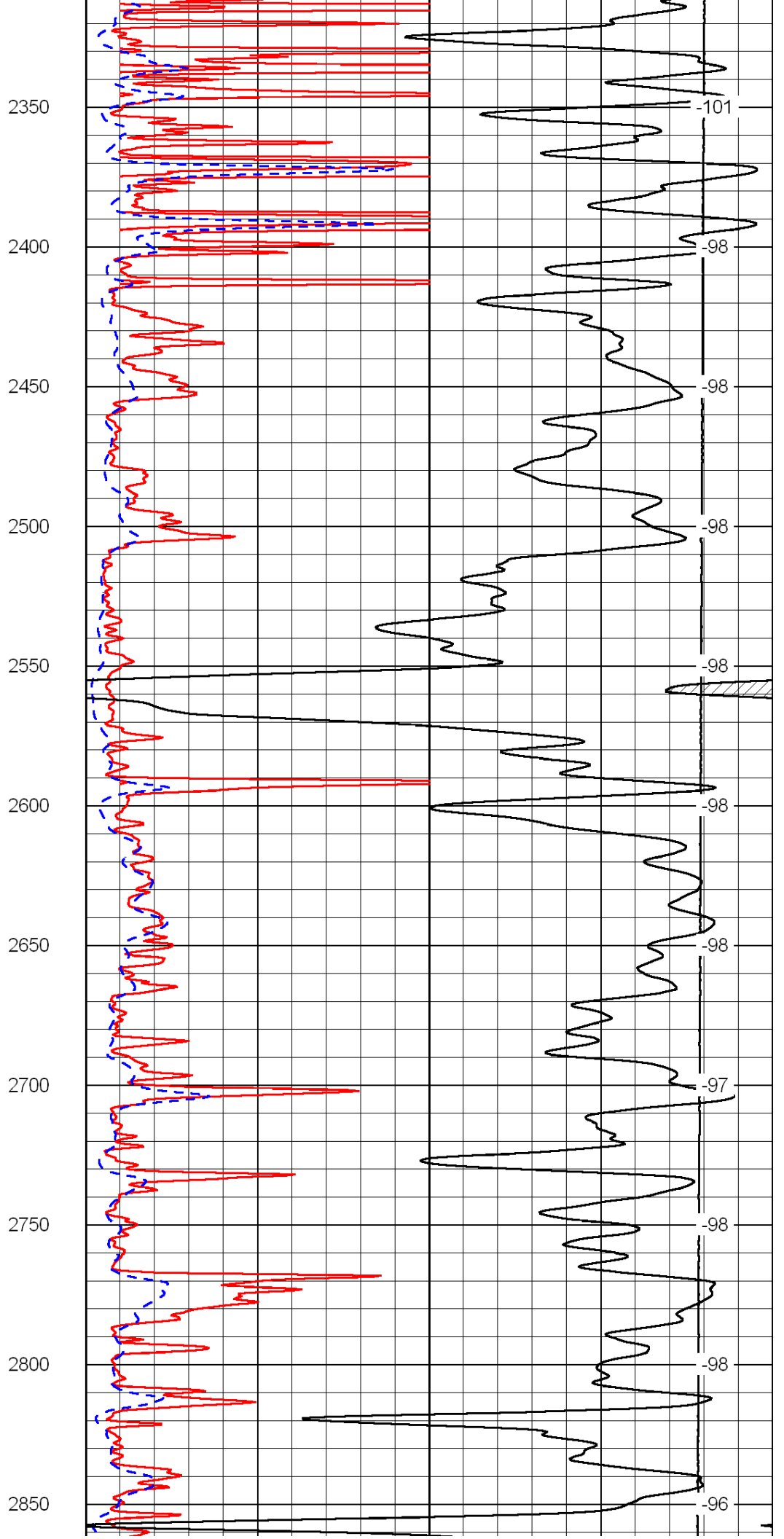
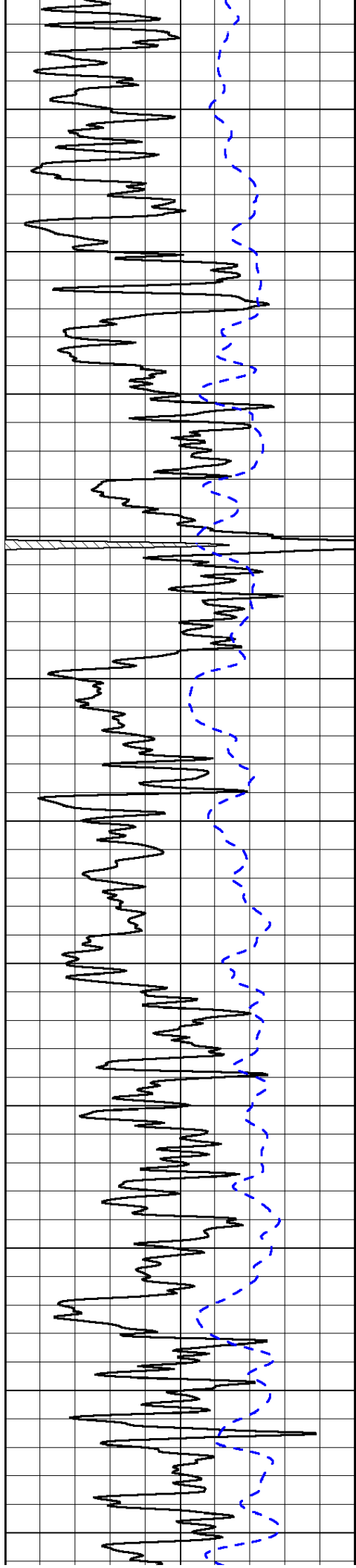
50	Shallow Resistivity	500
50	Deep Resistivity	500

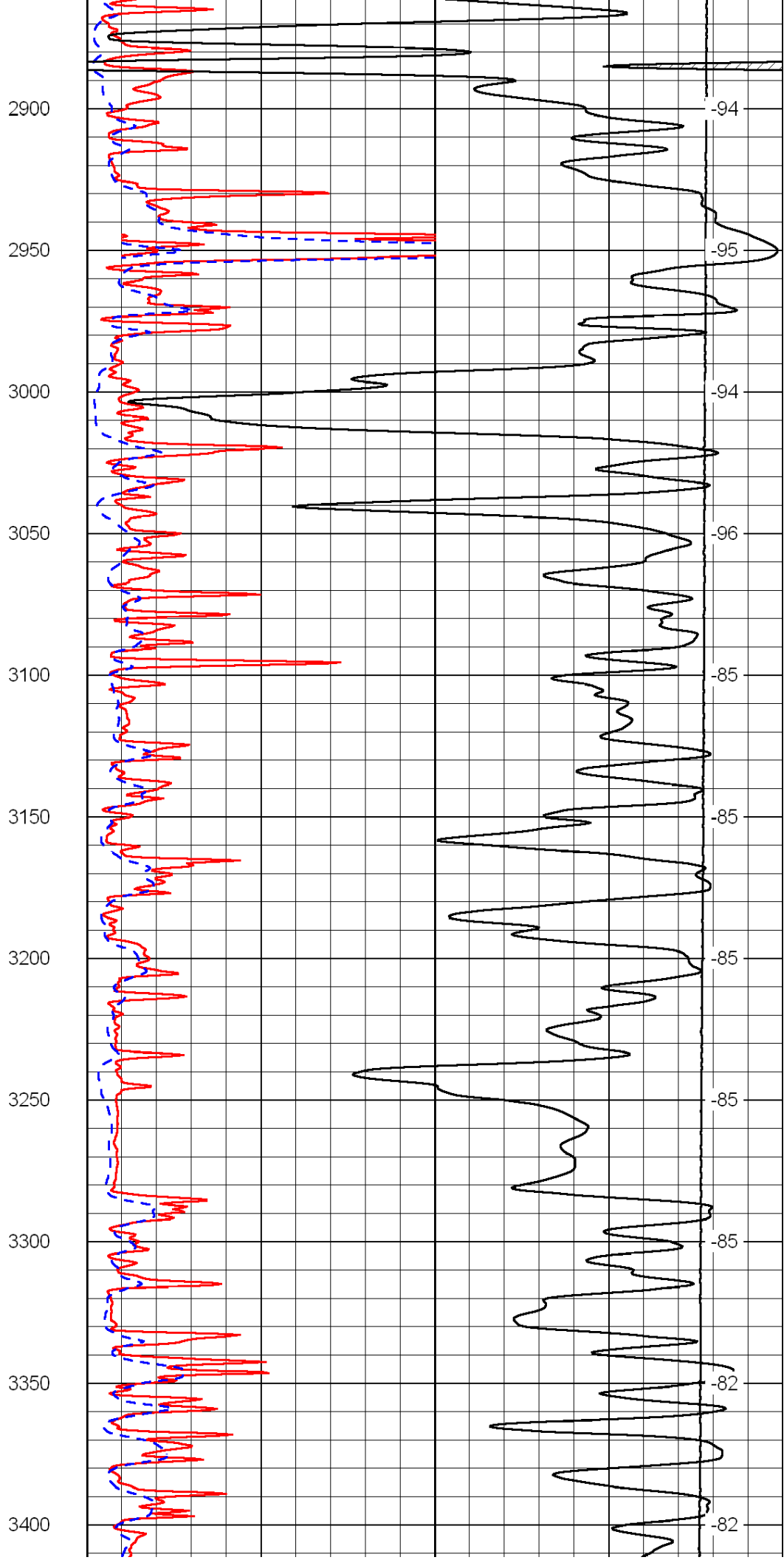
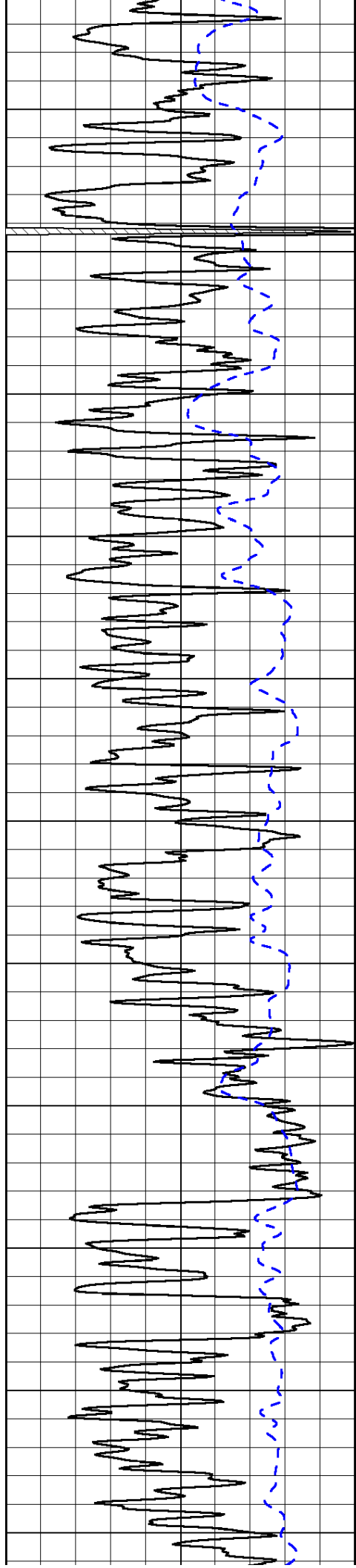


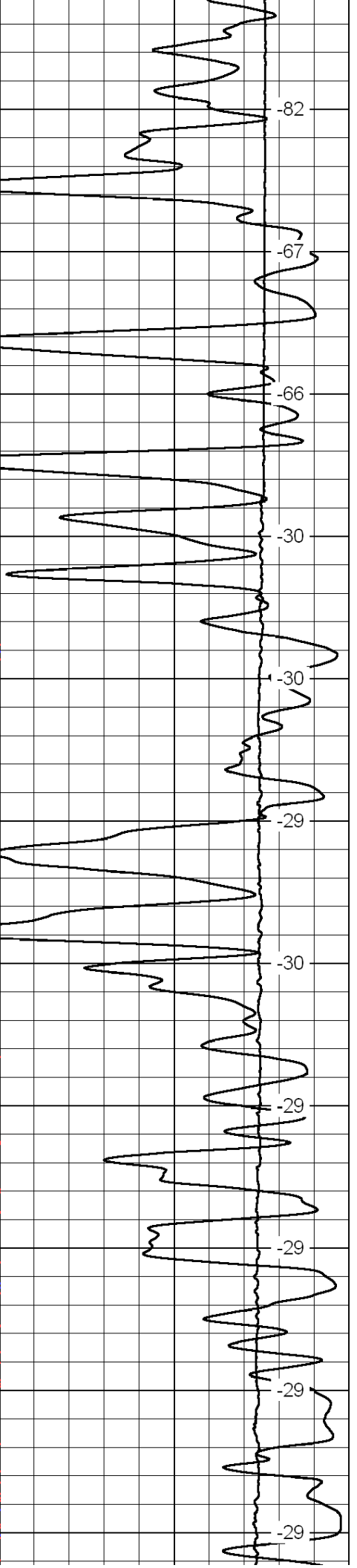
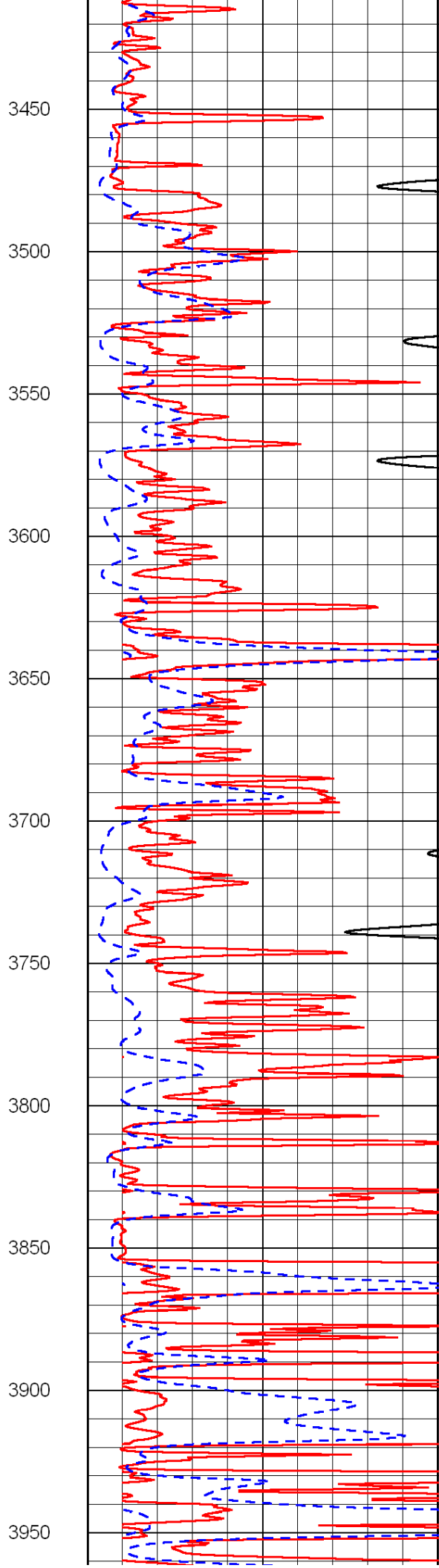
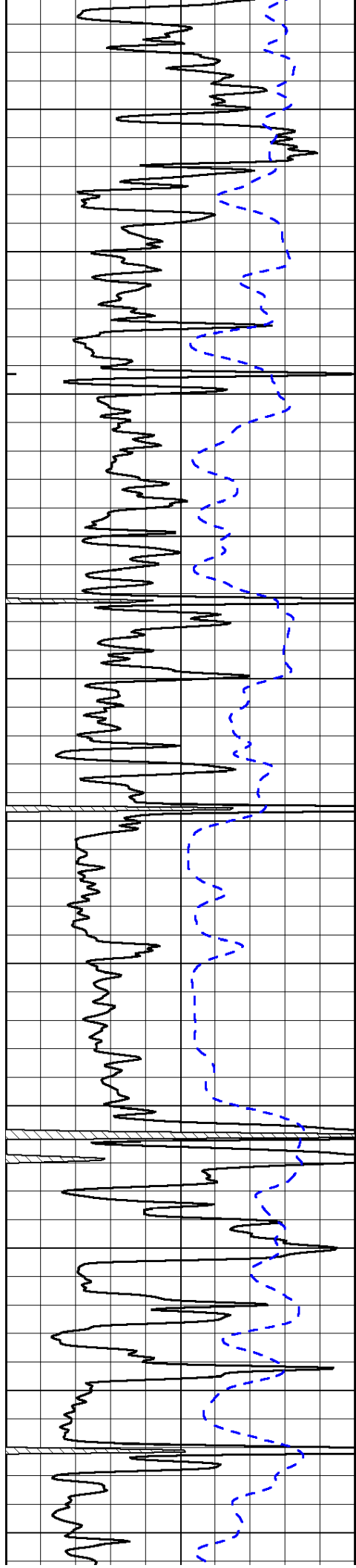


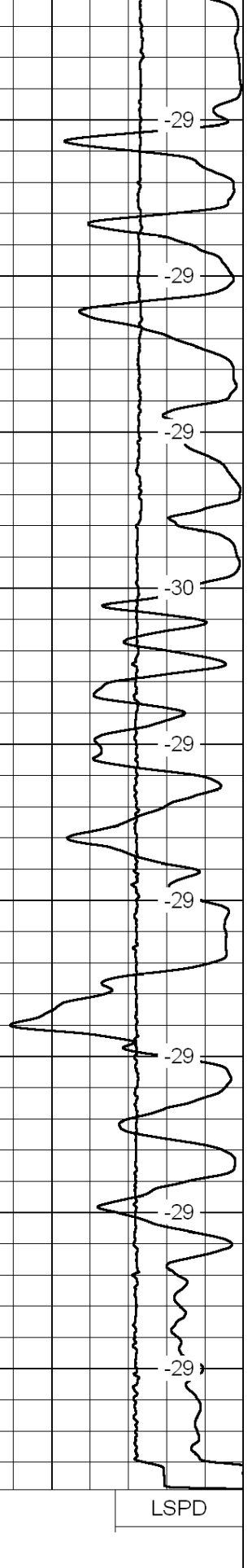
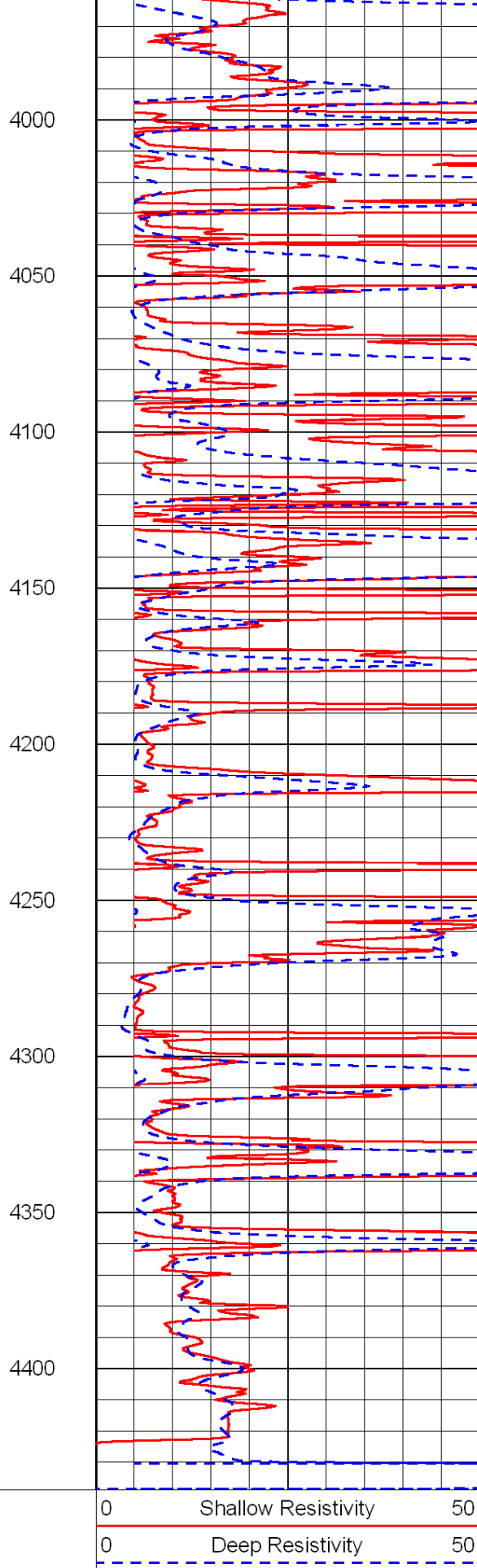
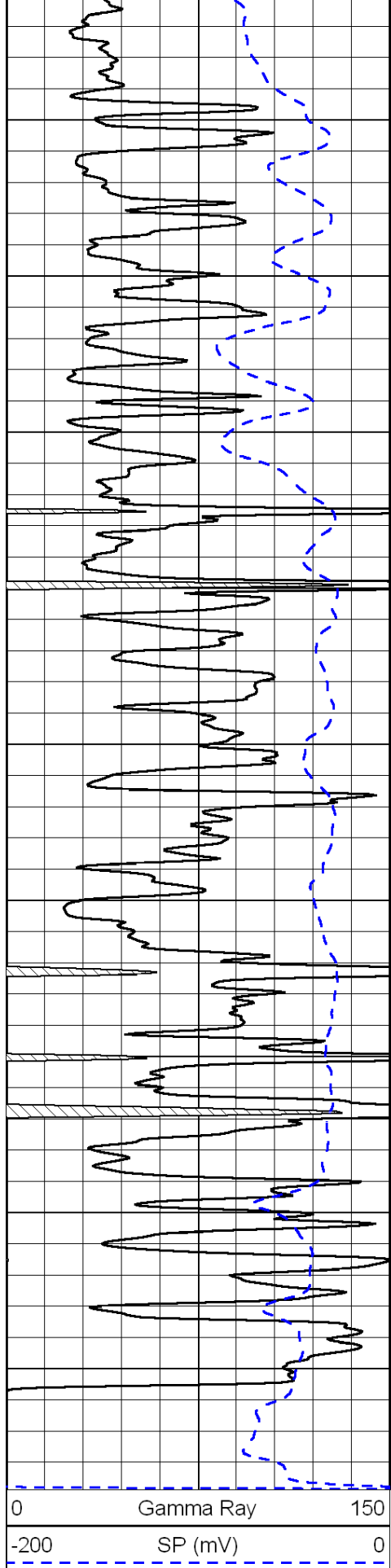












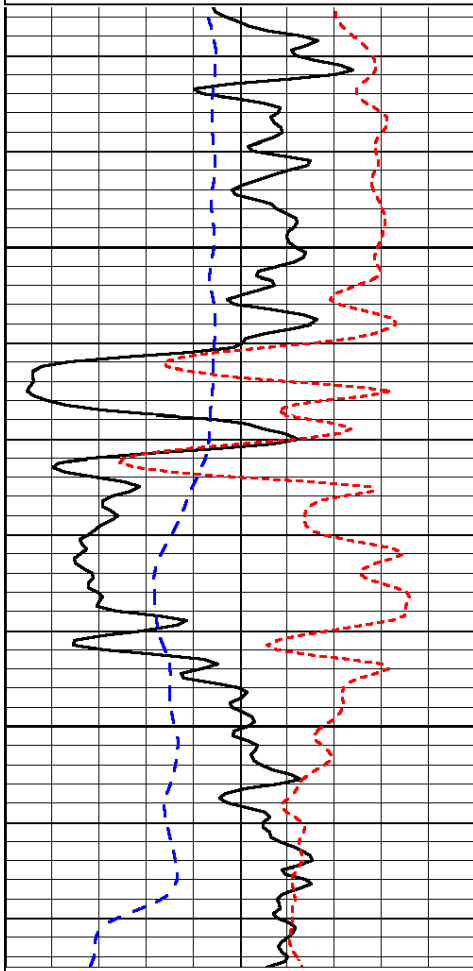
1000	Conductivity	0
15000	Line Tension	0
50	Shallow Resistivity	500
50	Deep Resistivity	500

Database File: c:\warrior\data\amwar\_baus no. 1-30\awarhd.db  
 Dataset Pathname: dil/awar2in  
 Presentation Format: dil  
 Dataset Creation: Sat Jul 17 04:32:40 2010  
 Charted by: Depth in Feet scaled 1:240

0	Gamma Ray	150
-200	SP (mV)	0
-160	Rxo / Rt	40

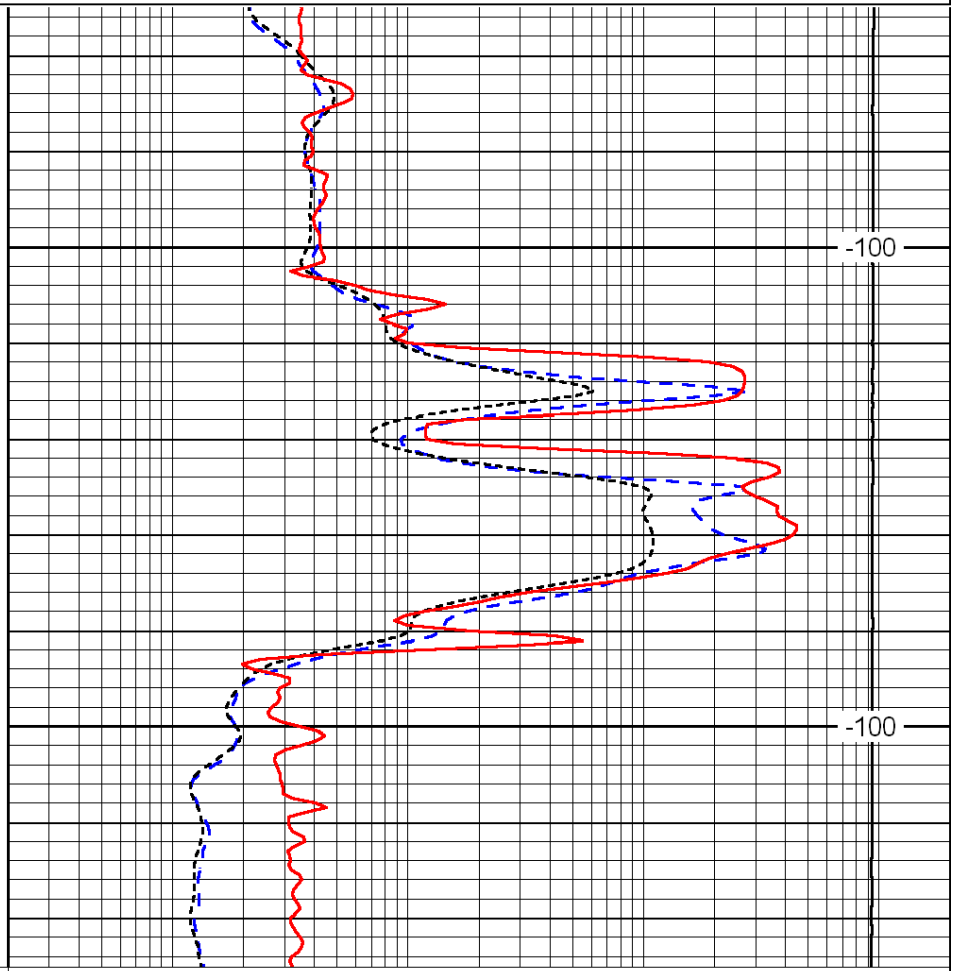
0.2	Deep Resistivity	2000
0.2	Medium Resistivity	2000
0.2	Shallow Resistivity	2000
15000	Line Tension	0

LSPD



1500

1550



-100

-100

0	Gamma Ray	150
-200	SP (mV)	0
-160	Rxo / Rt	40

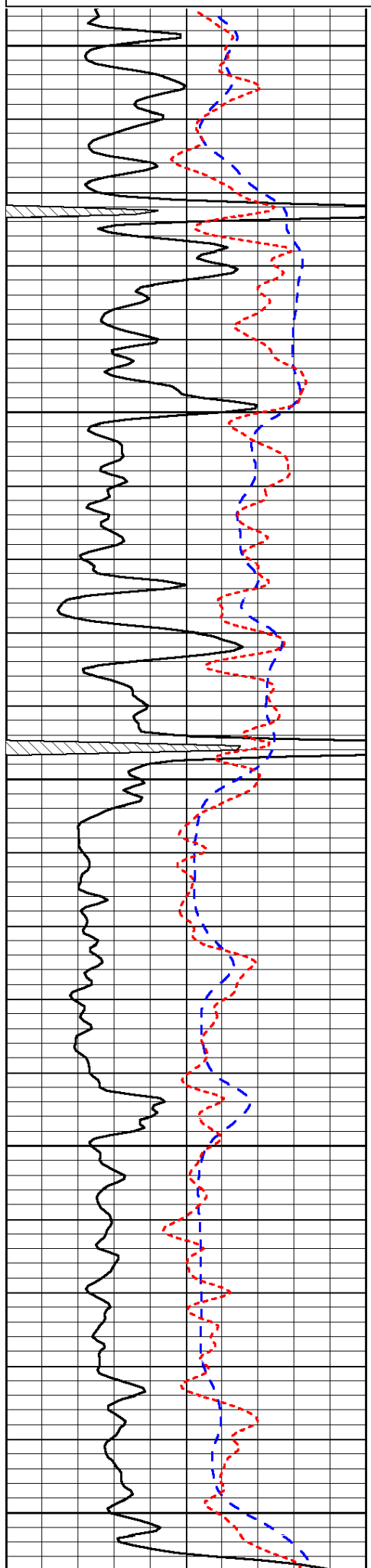
0.2	Deep Resistivity	2000
0.2	Medium Resistivity	2000
0.2	Shallow Resistivity	2000
15000	Line Tension	0

LSPD

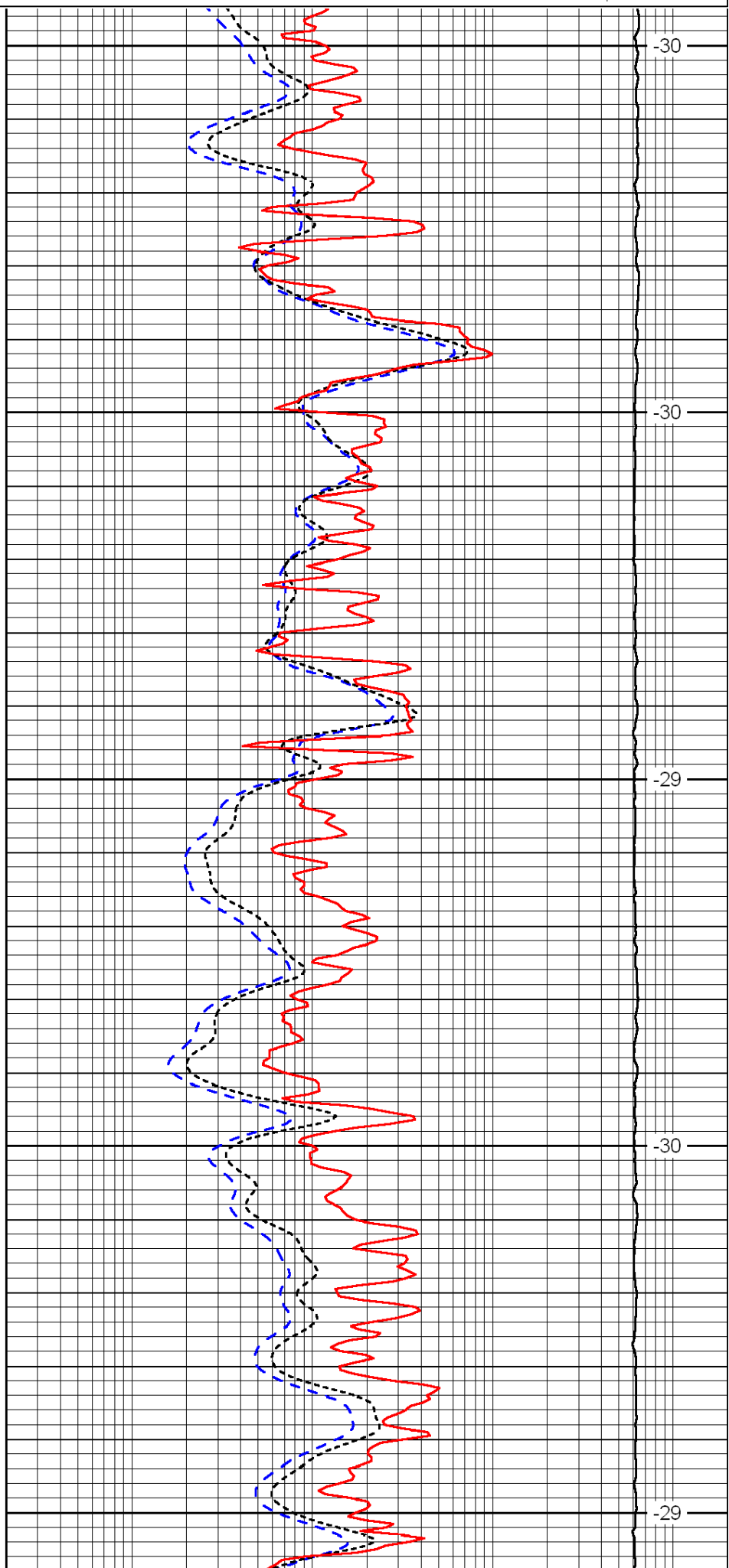
Database File: c:\warrior\data\amwar\_baus no. 1-30\awarhd.db  
 Dataset Pathname: dil/awar2in  
 Presentation Format: dil  
 Dataset Creation: Sat Jul 17 04:32:40 2010  
 Charted by: Depth in Feet scaled 1:240

0	Gamma Ray	150
-200	SP (mV)	0
-160	Rxo / Rt	40

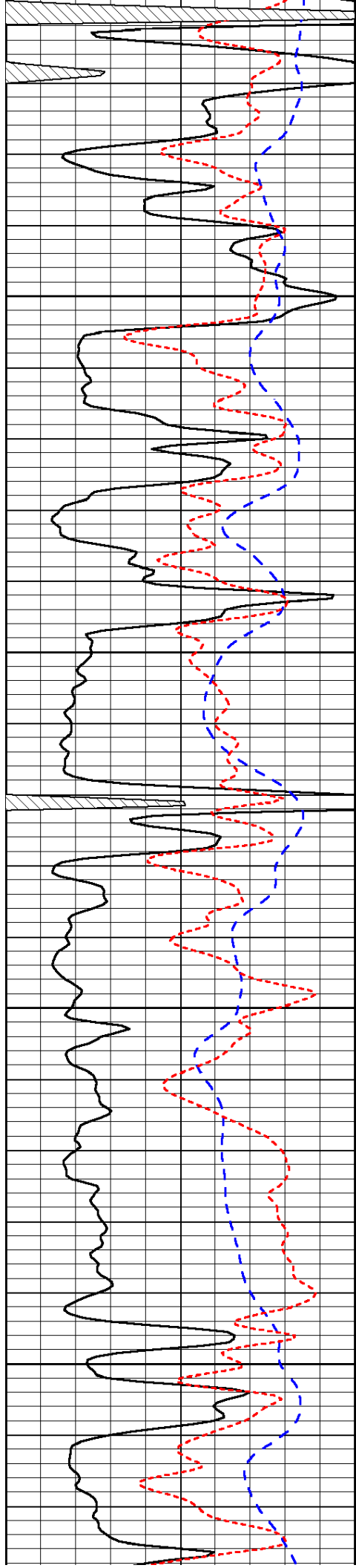
0.2	Deep Resistivity	2000
0.2	Medium Resistivity	2000
0.2	Shallow Resistivity	2000
15000	Line Tension	0



3600  
3650  
3700  
3750  
3800



-30  
-30  
-29  
-30  
-29

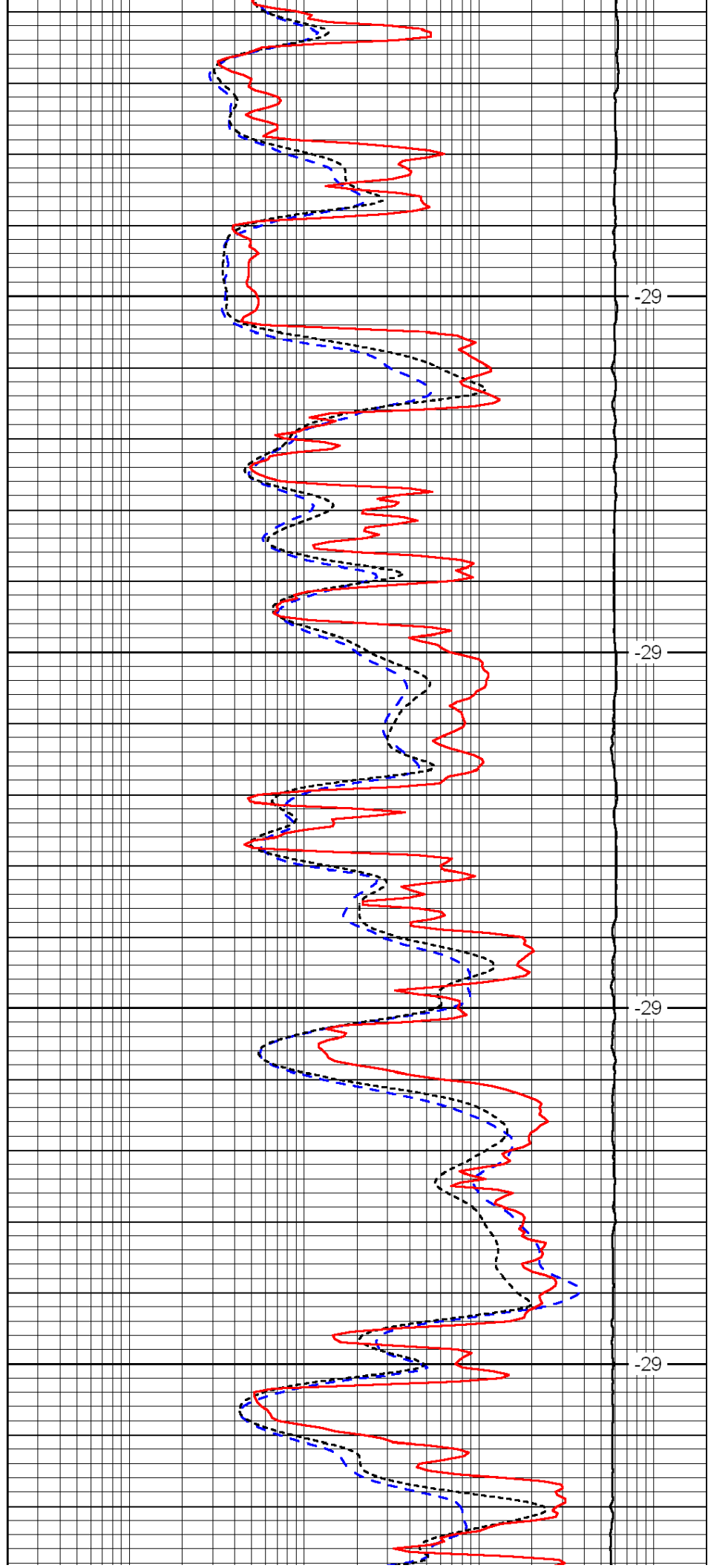


3850

3900

3950

4000

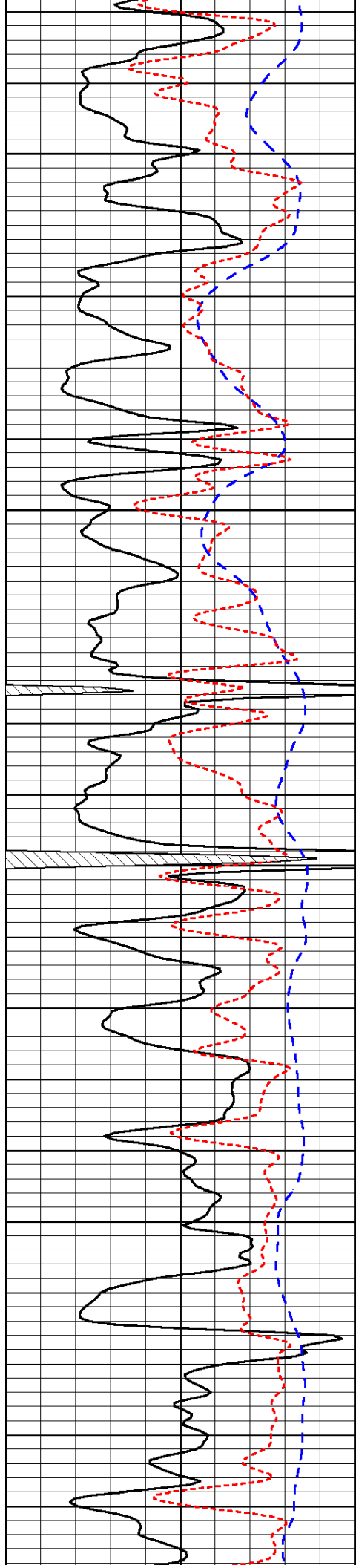


-29

-29

-29

-29

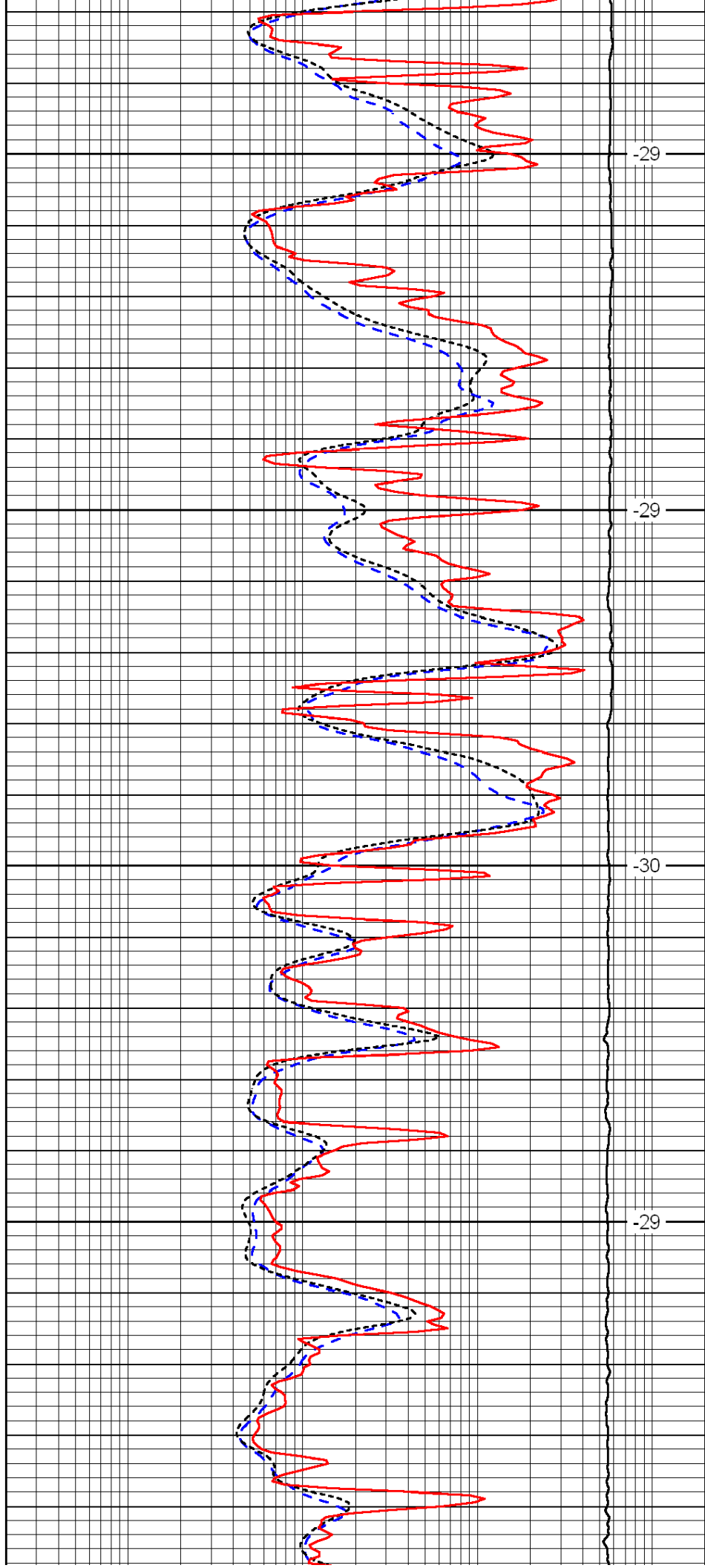


4050

4100

4150

4200

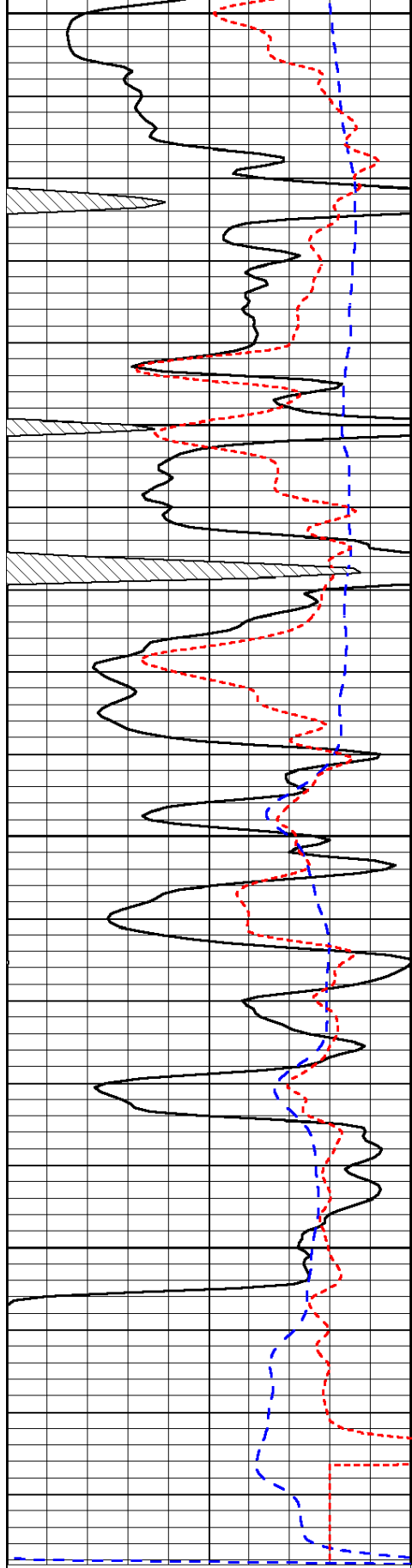


-29

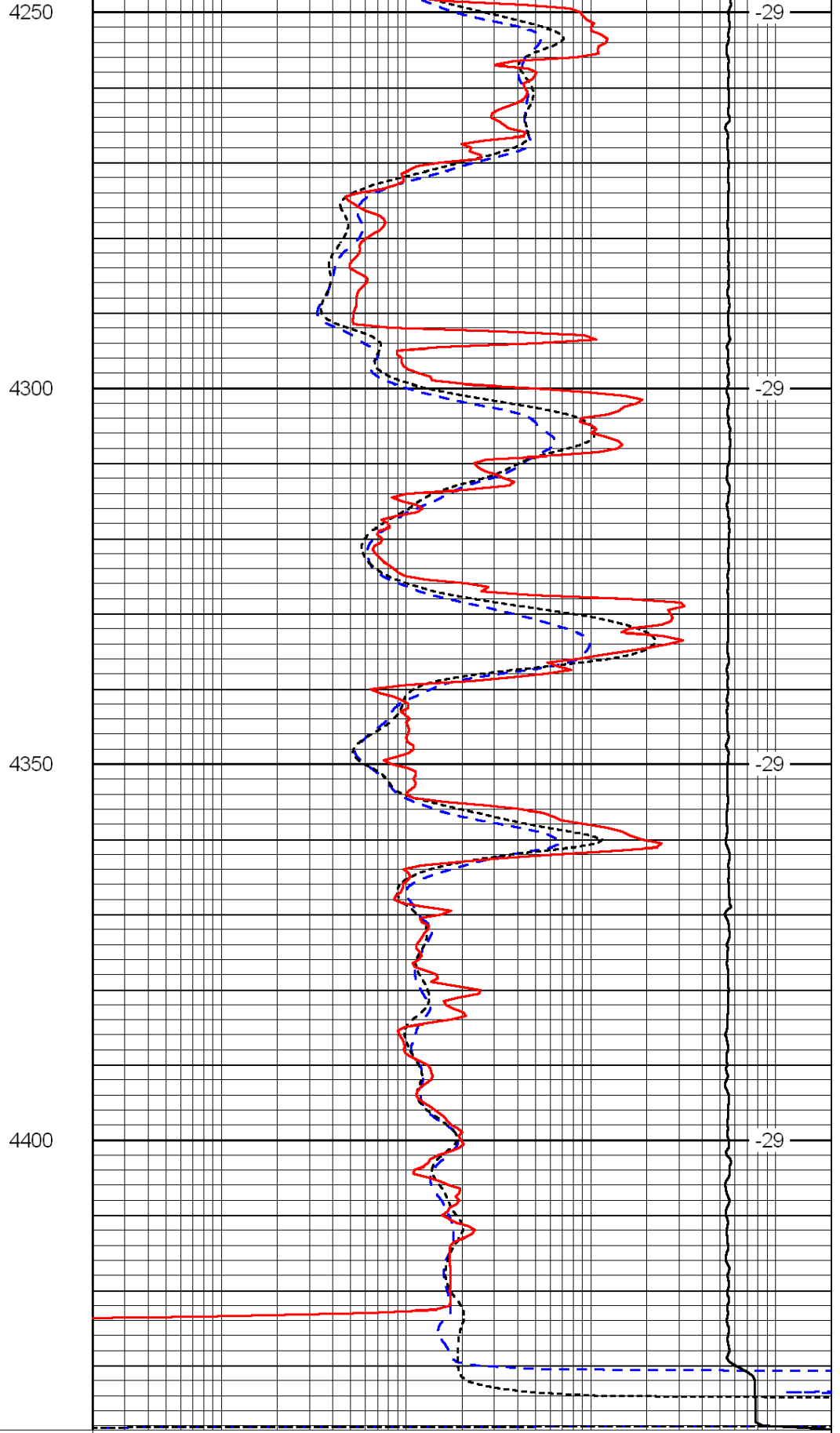
-29

-30

-29



0	Gamma Ray	150
-200	SP (mV)	0
-160	Rxo / Rt	40



0.2	Deep Resistivity	2000
0.2	Medium Resistivity	2000
0.2	Shallow Resistivity	2000
15000	Line Tension	0

LSPD